

Data Path : Z:\pestpcbsrv\HPCHEM1\ECD_L\Data\PL050319\
 Data File : PL048196.D
 Signal(s) : Signal #1: ECD1A.ch Signal #2: ECD2B.ch
 Acq On : 03 May 2019 22:12
 Operator : AJ\SJ
 Sample : K2647-04
 Misc :
 ALS Vial : 31 Sample Multiplier: 1

Instrument :
 ECD_L
 ClientSampleId :
 SU-04-050219-B

Integration File signal 1: autoint1.e
 Integration File signal 2: autoint2.e
 Quant Time: May 03 23:10:23 2019
 Quant Method : Z:\pestpcbsrv\HPCHEM1\ECD_L\methods\PL050119.M
 Quant Title : GC Extractables
 QLast Update : Thu May 02 09:36:55 2019
 Response via : Initial Calibration
 Integrator: ChemStation

Volume Inj. : 1 µl
 Signal #1 Phase : ZB-MR2 Signal #2 Phase: ZB-MR1
 Signal #1 Info : 30M x 0.32mm x0.2 Signal #2 Info : 30M x 0.32mm x0.5µm

Compound	RT#1	RT#2	Resp#1	Resp#2	ng/ml	ng/ml

System Monitoring Compounds						
1) SA Tetrachlo...	3.328	3.941	193.8E6	50301942	20.012	20.194
28) SA Decachlor...	7.998	8.978	156.8E6	45009577	15.599	16.957
Target Compounds						
7) B delta-BHC	0.000	4.974f	0	6386295	N.D.	2.258 #
19) B Endosulfa...	6.489f	0.000	8074557	0	0.752	N.D. #

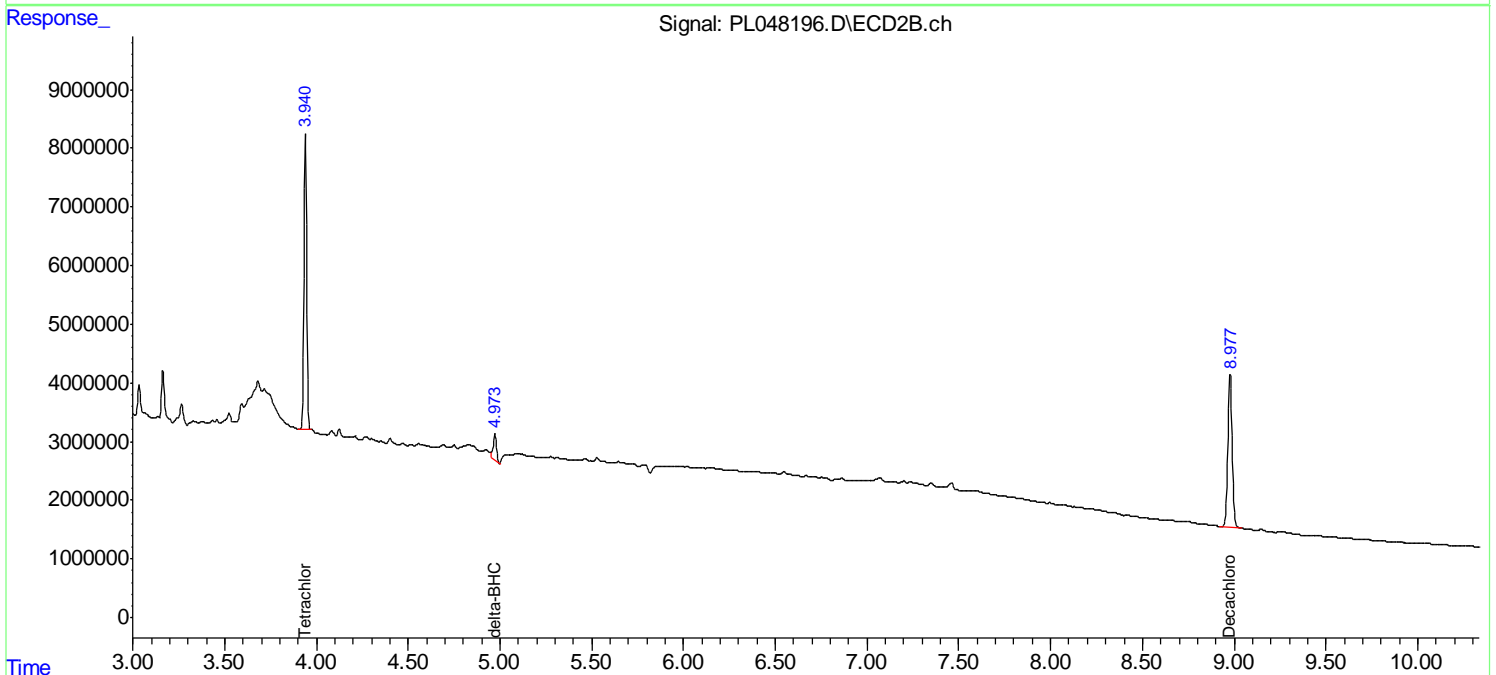
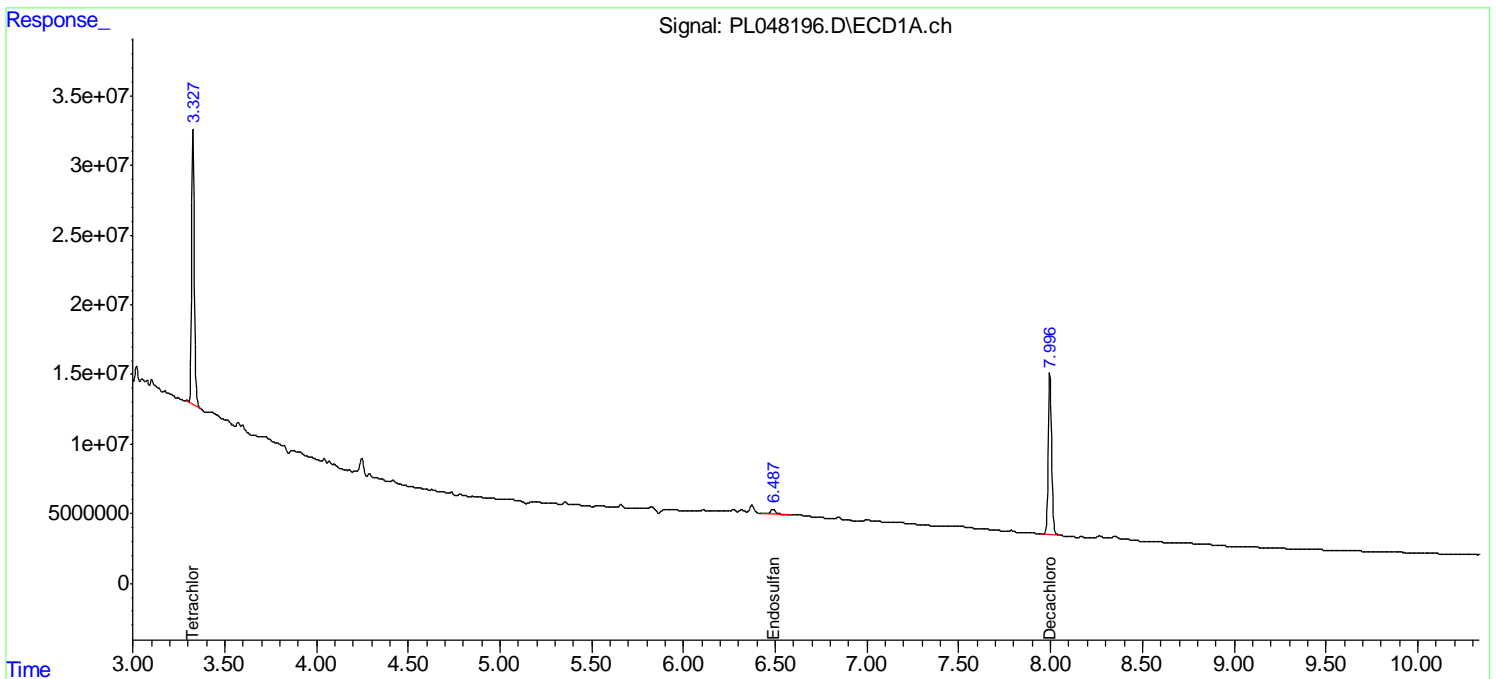
(f)=RT Delta > 1/2 Window (#)=Amounts differ by > 25% (m)=manual int.

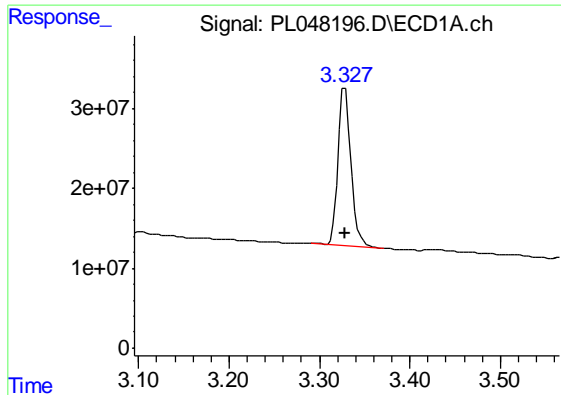
Data Path : Z:\pestpcbsrv\HPCHEM1\ECD_L\Data\PL050319\
 Data File : PL048196.D
 Signal(s) : Signal #1: ECD1A.ch Signal #2: ECD2B.ch
 Acq On : 03 May 2019 22:12
 Operator : AJ\SJ
 Sample : K2647-04
 Misc :
 ALS Vial : 31 Sample Multiplier: 1

Instrument :
 ECD_L
 ClientSampleId :
 SU-04-050219-B

Integration File signal 1: autoint1.e
 Integration File signal 2: autoint2.e
 Quant Time: May 03 23:10:23 2019
 Quant Method : Z:\pestpcbsrv\HPCHEM1\ECD_L\methods\PL050119.M
 Quant Title : GC Extractables
 QLast Update : Thu May 02 09:36:55 2019
 Response via : Initial Calibration
 Integrator: ChemStation

Volume Inj. : 1 µl
 Signal #1 Phase : ZB-MR2 Signal #2 Phase: ZB-MR1
 Signal #1 Info : 30M x 0.32mm x0.2 Signal #2 Info : 30M x 0.32mm x0.5µm

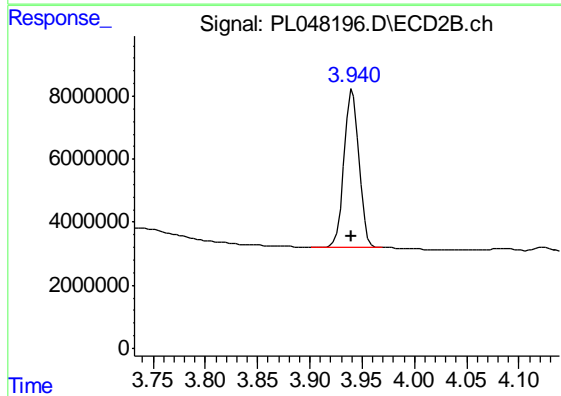




#1 Tetrachloro-m-xylene

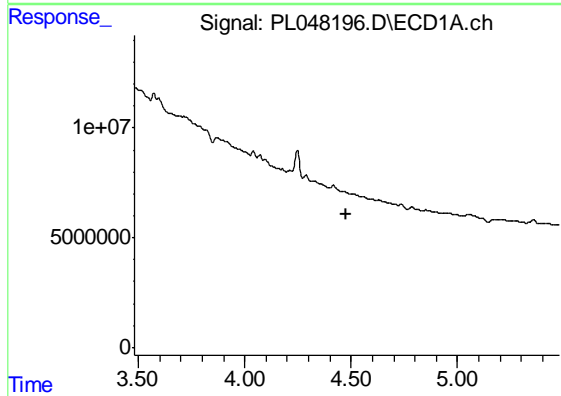
R.T.: 3.328 min
 Delta R.T.: 0.000 min
 Response: 193849375
 Conc: 20.01 ng/ml

Instrument :
 ECD_L
 ClientSampleId :
 SU-04-050219-B



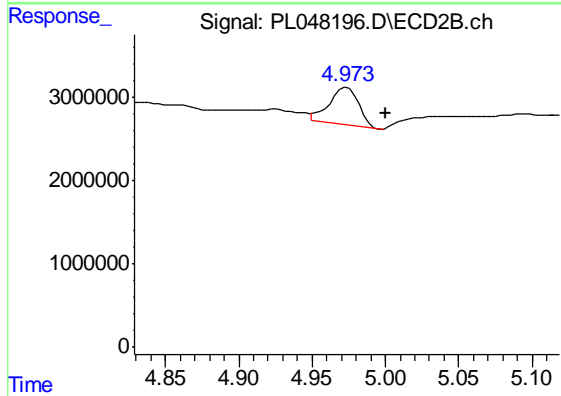
#1 Tetrachloro-m-xylene

R.T.: 3.941 min
 Delta R.T.: 0.001 min
 Response: 50301942
 Conc: 20.19 ng/ml



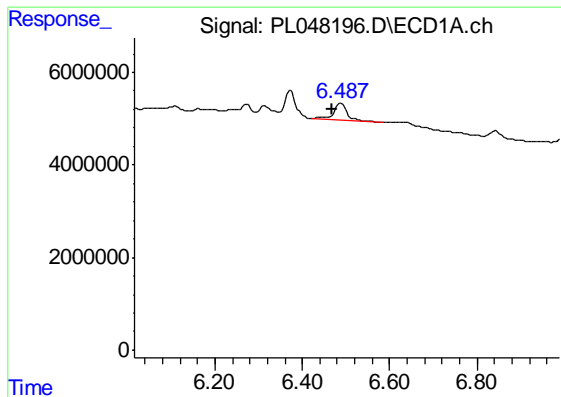
#7 delta-BHC

R.T.: 0.000 min
 Exp R.T. : 4.479 min
 Response: 0
 Conc: N.D.



#7 delta-BHC

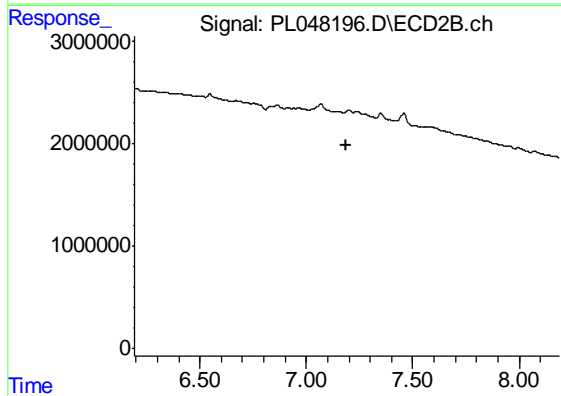
R.T.: 4.974 min
 Delta R.T.: -0.026 min
 Response: 6386295
 Conc: 2.26 ng/ml



#19 Endosulfan Sulfate

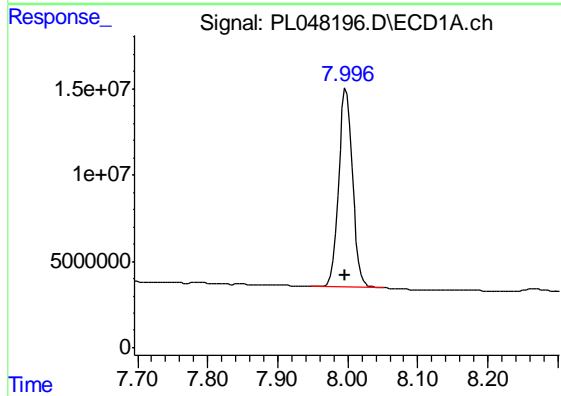
R.T.: 6.489 min
 Delta R.T.: 0.021 min
 Response: 8074557
 Conc: 0.75 ng/ml

Instrument :
 ECD_L
 ClientSampleId :
 SU-04-050219-B



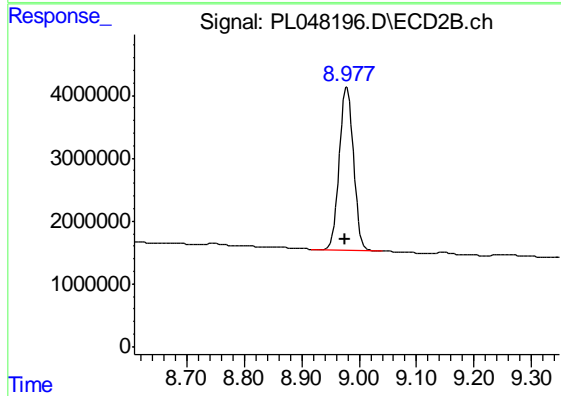
#19 Endosulfan Sulfate

R.T.: 0.000 min
 Exp R.T. : 7.190 min
 Response: 0
 Conc: N.D.



#28 Decachlorobiphenyl

R.T.: 7.998 min
 Delta R.T.: 0.002 min
 Response: 156833961
 Conc: 15.60 ng/ml



#28 Decachlorobiphenyl

R.T.: 8.978 min
 Delta R.T.: 0.003 min
 Response: 45009577
 Conc: 16.96 ng/ml