

Data Path : Z:\pestpcbsrv\HPCHEM1\ECD_L\Data\PL050321\
 Data File : PL0666627.D
 Signal(s) : Signal #1: ECD1A.ch Signal #2: ECD2B.ch
 Acq On : 03 May 2021 12:11
 Operator : AR\AJ
 Sample : M2229-01
 Misc :
 ALS Vial : 5 Sample Multiplier: 1

Instrument :
 ECD_L
 ClientSampled :

Integration File signal 1: autoint1.e
 Integration File signal 2: autoint2.e
 Quant Time: May 04 05:23:43 2021
 Quant Method : Z:\pestpcbsrv\HPCHEM1\ECD_L\methods\PL042621.M
 Quant Title : GC Extractables
 QLast Update : Wed Apr 28 08:49:49 2021
 Response via : Initial Calibration
 Integrator: ChemStation

Volume Inj. : 1 µl
 Signal #1 Phase : ZB-MR2 Signal #2 Phase: ZB-MR1
 Signal #1 Info : 30M x 0.32mm x0.2 Signal #2 Info : 30M x 0.32mm x0.5µm

	Compound	RT#1	RT#2	Resp#1	Resp#2	ng/ml	ng/ml

System Monitoring Compounds							
1)	SA Tetrachlo...	3.432	4.152	40623102	56317043	10.781	16.035 #
28)	SA Decachlor...	8.171	9.355	42584505	37534195	11.106	12.133
Target Compounds							
4)	MA Heptachlor	4.453	0.000	753.1E6	0	134.881	N.D. #
5)	MB Aldrin	4.696	5.702f	140.7E6	121.7E6	26.969	26.028
7)	B delta-BHC	4.609f	5.272f	214.3E6	796.9E6	37.671	179.902 #
8)	B Heptachlo...	5.119	6.062	21781583	150.6E6	4.448	40.703 #
9)	A Endosulfan I	5.486f	6.413f	16896487	9019460	3.662	2.368 #
10)	B gamma-Chl...	5.328f	6.322	121.1E6	59618388	23.762	14.322 #
11)	B alpha-Chl...	5.415	6.382	47310776	19596300	9.609	4.724 #
12)	B 4,4'-DDE	5.580	6.541	65183144	144.6E6	14.285	38.110 #
13)	MA Dieldrin	5.701	6.678f	123.8E6	47673551	25.508	12.177 #
14)	MA Endrin	5.962	6.906f	-48683806	90049478	N.D.	28.736
15)	B Endosulfa...	6.220	7.111f	46976013	21732650	11.385	6.580 #
16)	A 4,4'-DDD	6.093	7.042	3076645	68275967	0.810	21.920 #
17)	MA 4,4'-DDT	6.327	7.312f	88918594	95156960	22.804	29.400 #
18)	B Endrin al...	6.372f	7.261	34182862	5003014	10.089	1.789 #
19)	B Endosulfa...	6.615	0.000	22597055	0	5.229	N.D. #
20)	A Methoxychlor	6.862	7.787	62391564	827189	31.763	0.461 #
22)	Mirex	7.261f	8.436	1089950	2541975	0.297	0.911 #
23)	Chlordane-1	4.292	5.183	19747782	42013662	116.827	300.267 #
25)	Chlordane-3	5.328f	6.322	121.1E6	59618388	243.321	106.363 #
26)	Chlordane-4	5.415	6.382	47310776	19596300	112.109	29.188 #
27)	Chlordane-5	6.220	7.217	46976013	582601	278.960	4.961 #

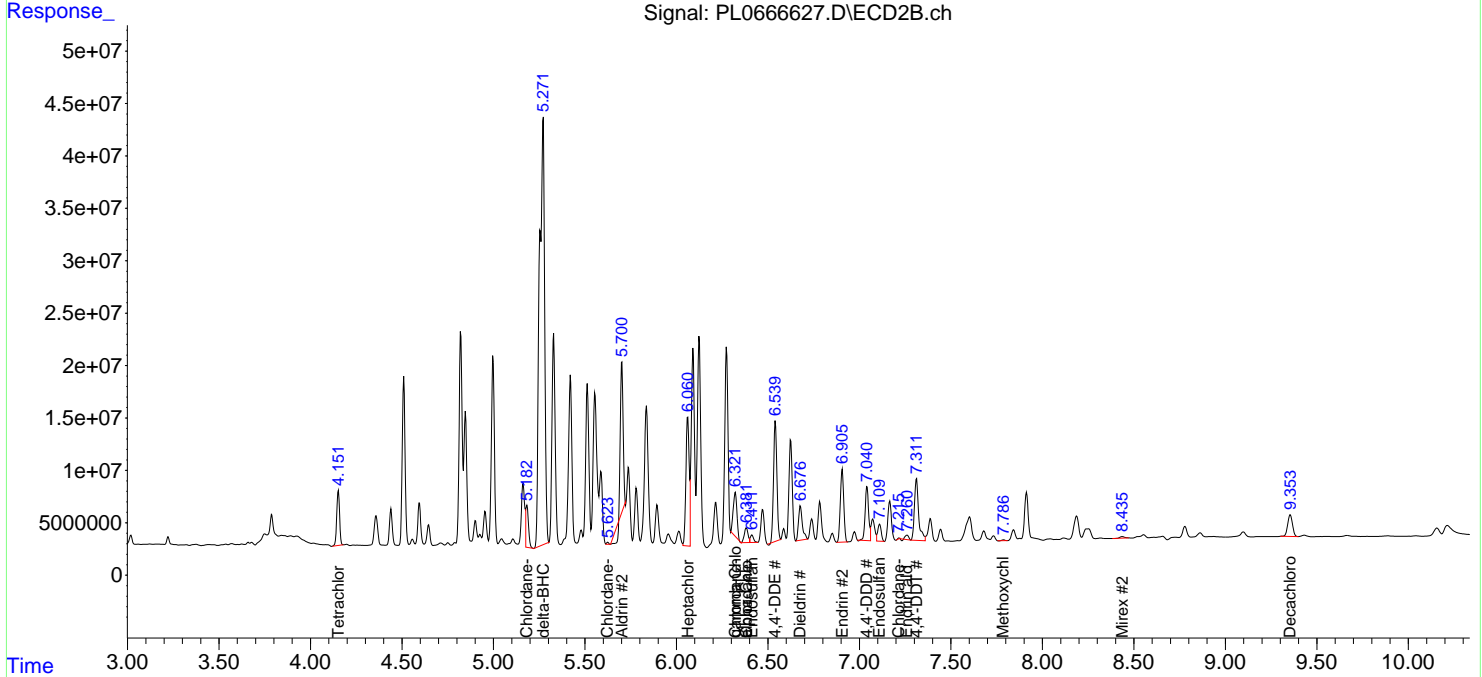
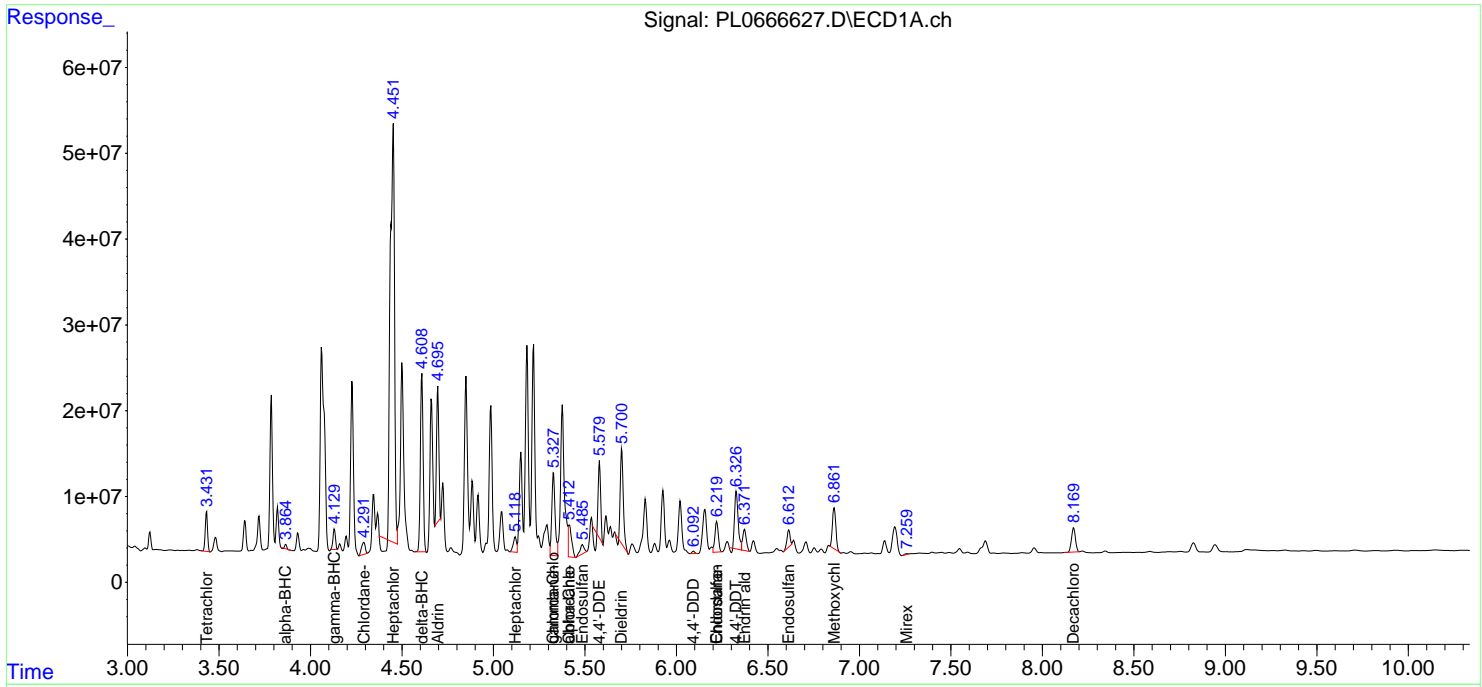
(f)=RT Delta > 1/2 Window (#)=Amounts differ by > 25% (m)=manual int.

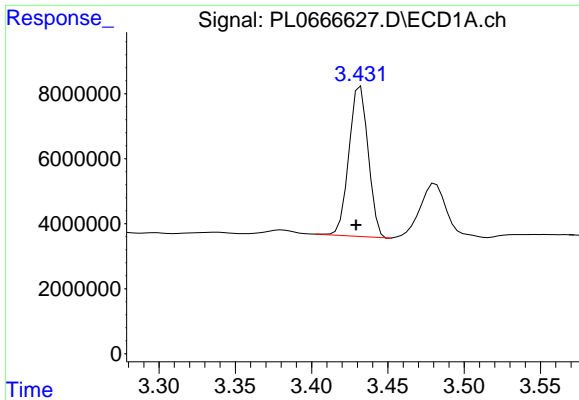
Data Path : Z:\pestpcbsrv\HPCHEM1\ECD_L\Data\PL050321\
 Data File : PL0666627.D
 Signal(s) : Signal #1: ECD1A.ch Signal #2: ECD2B.ch
 Acq On : 03 May 2021 12:11
 Operator : AR\AJ
 Sample : M2229-01
 Misc :
 ALS Vial : 5 Sample Multiplier: 1

Instrument :
 ECD_L
 ClientSampled :

Integration File signal 1: autoint1.e
 Integration File signal 2: autoint2.e
 Quant Time: May 04 05:23:43 2021
 Quant Method : Z:\pestpcbsrv\HPCHEM1\ECD_L\methods\PL042621.M
 Quant Title : GC Extractables
 QLast Update : Wed Apr 28 08:49:49 2021
 Response via : Initial Calibration
 Integrator: ChemStation

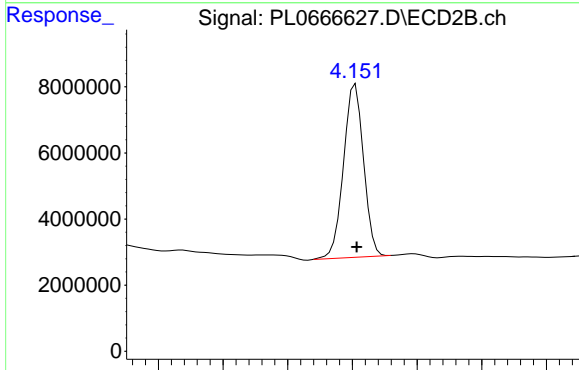
Volume Inj. : 1 µl
 Signal #1 Phase : ZB-MR2 Signal #2 Phase: ZB-MR1
 Signal #1 Info : 30M x 0.32mm x0.2 Signal #2 Info : 30M x 0.32mm x0.5µm



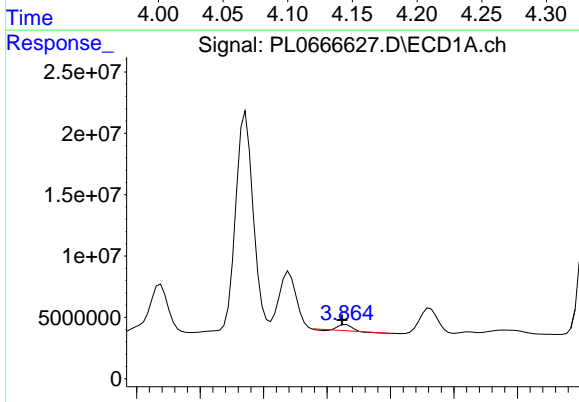


#1 Tetrachloro-m-xylene
 R.T.: 3.432 min
 Delta R.T.: 0.003 min
 Response: 40623102
 Conc: 10.78 ng/ml

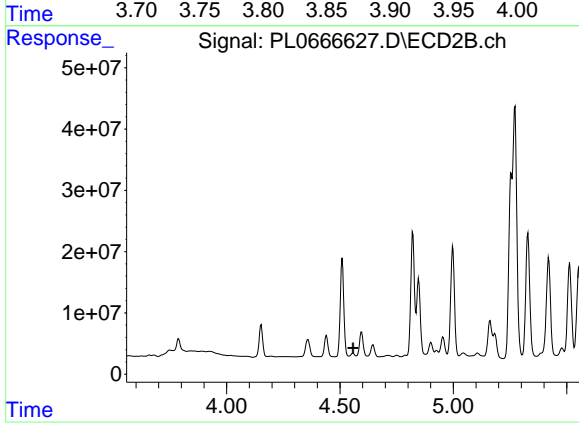
Instrument :
 ECD_L
 ClientSampleId :



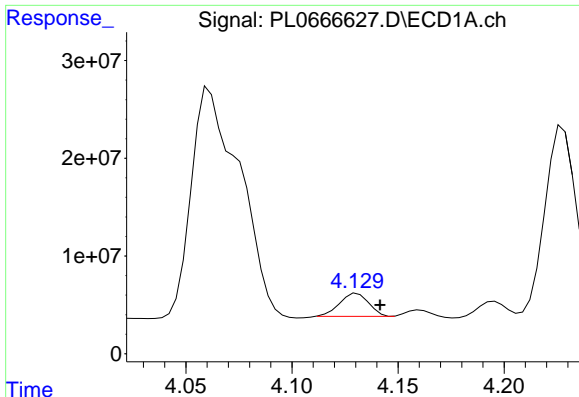
#1 Tetrachloro-m-xylene
 R.T.: 4.152 min
 Delta R.T.: 0.000 min
 Response: 56317043
 Conc: 16.04 ng/ml



#2 alpha-BHC
 R.T.: 3.865 min
 Delta R.T.: 0.003 min
 Response: 3024532
 Conc: 0.49 ng/ml

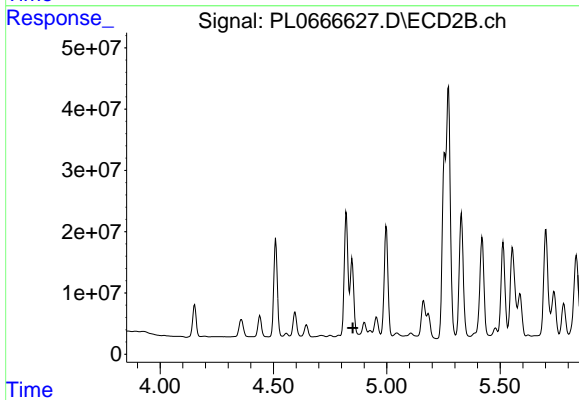


#2 alpha-BHC
 R.T.: 4.557 min
 Delta R.T.: 0.000 min
 Response: -5972177
 Conc: N.D.

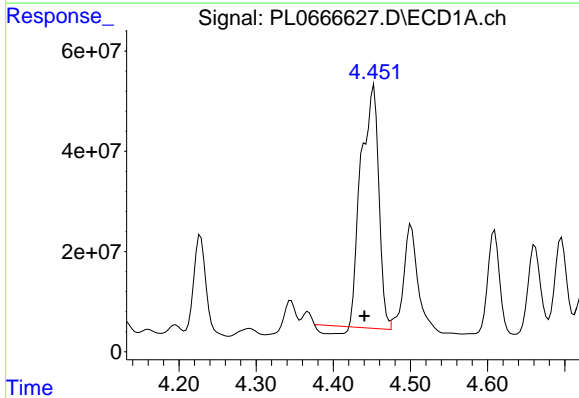


#3 gamma-BHC (Lindane)
 R.T.: 4.131 min
 Delta R.T.: -0.011 min
 Response: 22556494
 Conc: 4.10 ng/ml

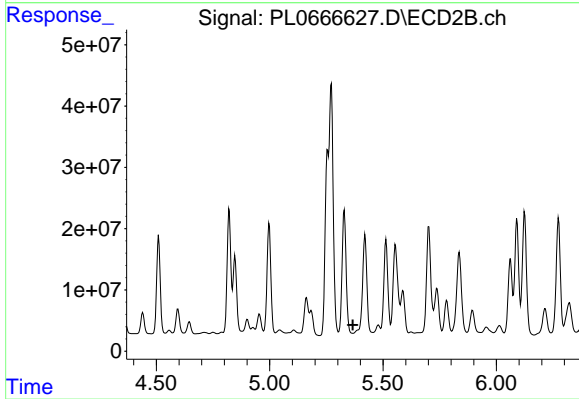
Instrument :
 ECD_L
 ClientSampleId :



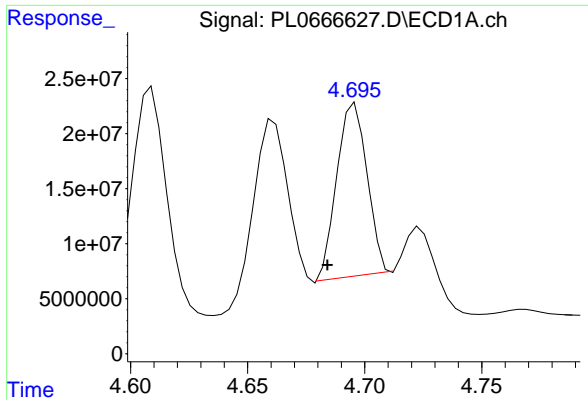
#3 gamma-BHC (Lindane)
 R.T.: 4.847 min
 Delta R.T.: -0.004 min
 Response: -63101284
 Conc: N.D.



#4 Heptachlor
 R.T.: 4.453 min
 Delta R.T.: 0.013 min
 Response: 753070656
 Conc: 134.88 ng/ml

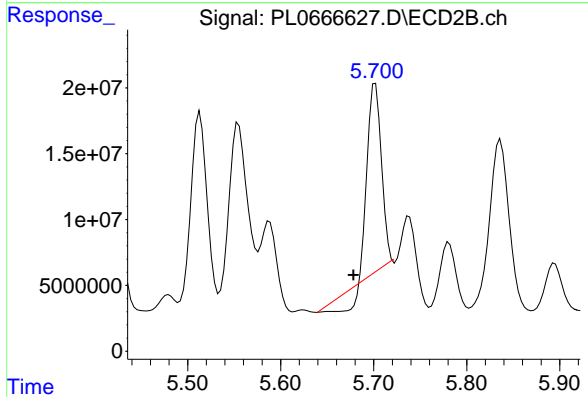


#4 Heptachlor
 R.T.: 0.000 min
 Exp R.T.: 5.367 min
 Response: 0
 Conc: N.D.

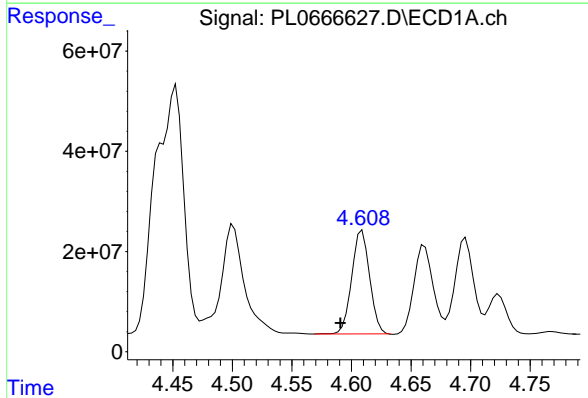


#5 Aldrin
 R.T.: 4.696 min
 Delta R.T.: 0.012 min
 Response: 140658367
 Conc: 26.97 ng/ml

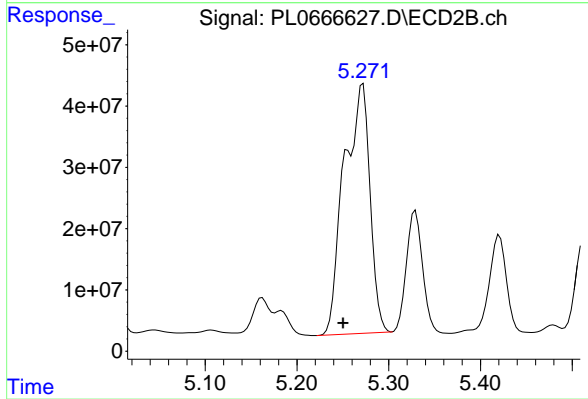
Instrument :
 ECD_L
 ClientSampled :



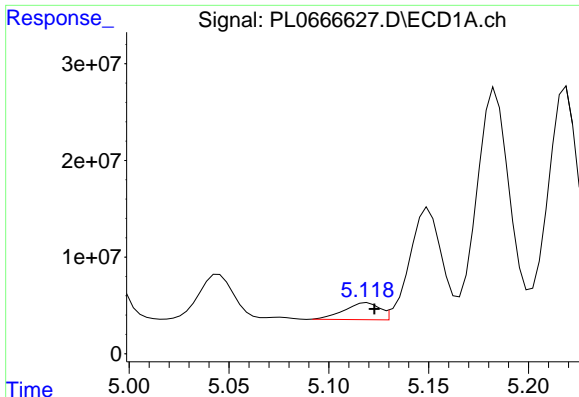
#5 Aldrin
 R.T.: 5.702 min
 Delta R.T.: 0.024 min
 Response: 121682004
 Conc: 26.03 ng/ml



#7 delta-BHC
 R.T.: 4.609 min
 Delta R.T.: 0.018 min
 Response: 214321380
 Conc: 37.67 ng/ml



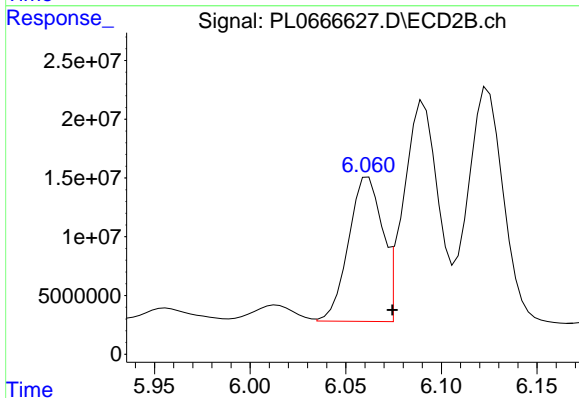
#7 delta-BHC
 R.T.: 5.272 min
 Delta R.T.: 0.022 min
 Response: 796942534
 Conc: 179.90 ng/ml



#8 Heptachlor epoxide

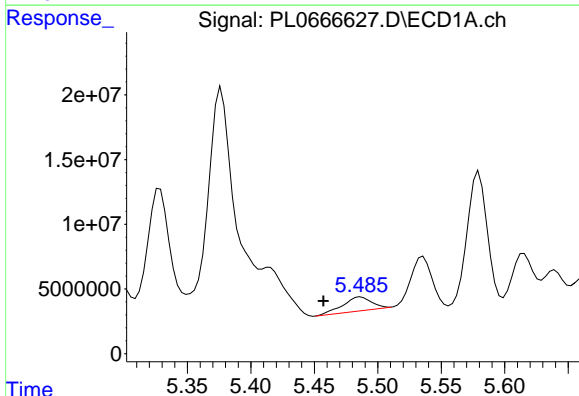
R.T.: 5.119 min
 Delta R.T.: -0.004 min
 Response: 21781583
 Conc: 4.45 ng/ml

Instrument :
 ECD_L
 ClientSampled :



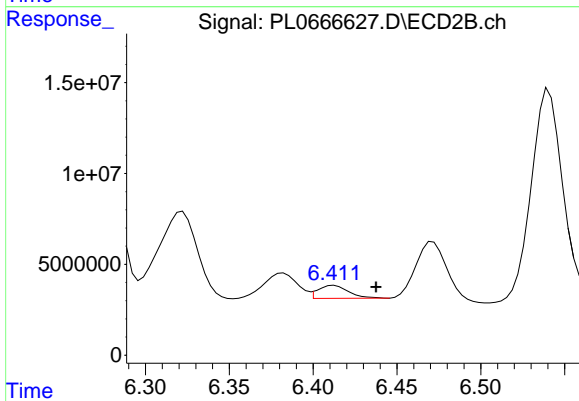
#8 Heptachlor epoxide

R.T.: 6.062 min
 Delta R.T.: -0.013 min
 Response: 150586978
 Conc: 40.70 ng/ml



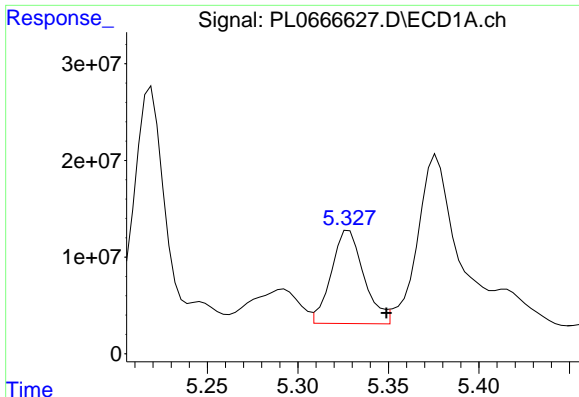
#9 Endosulfan I

R.T.: 5.486 min
 Delta R.T.: 0.029 min
 Response: 16896487
 Conc: 3.66 ng/ml



#9 Endosulfan I

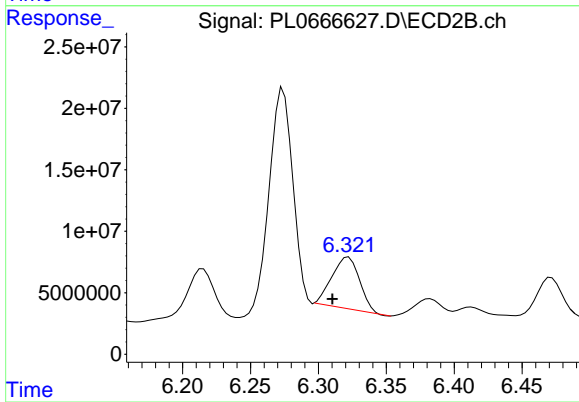
R.T.: 6.413 min
 Delta R.T.: -0.025 min
 Response: 9019460
 Conc: 2.37 ng/ml



#10 gamma-Chlordane

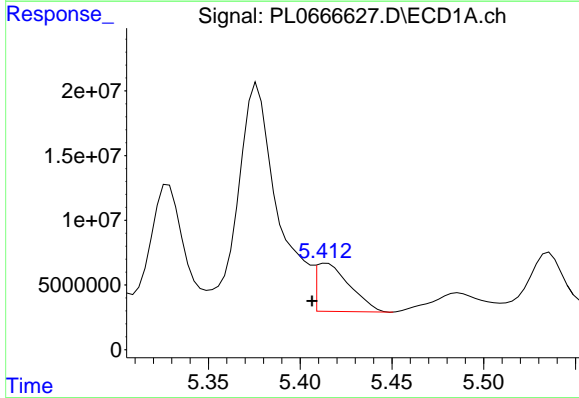
R.T.: 5.328 min
 Delta R.T.: -0.021 min
 Response: 121087980
 Conc: 23.76 ng/ml

Instrument :
 ECD_L
 ClientSampled :



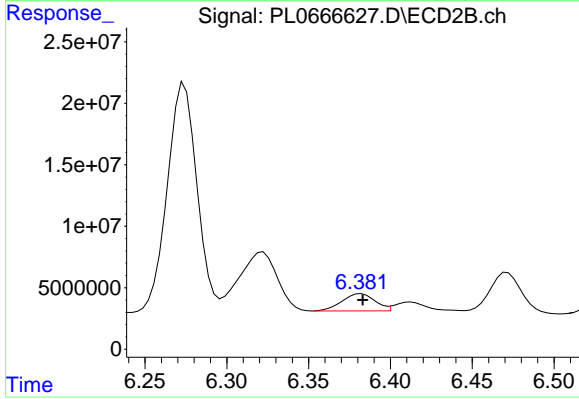
#10 gamma-Chlordane

R.T.: 6.322 min
 Delta R.T.: 0.012 min
 Response: 59618388
 Conc: 14.32 ng/ml



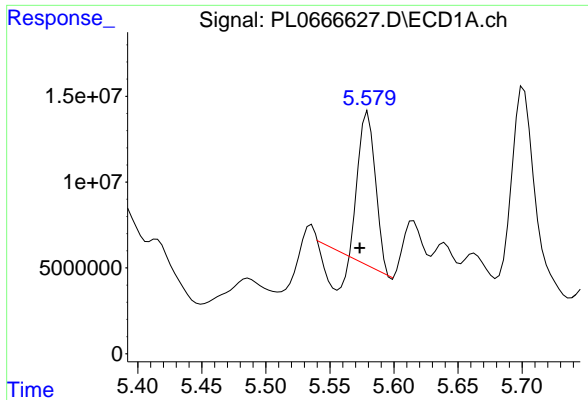
#11 alpha-Chlordane

R.T.: 5.415 min
 Delta R.T.: 0.008 min
 Response: 47310776
 Conc: 9.61 ng/ml



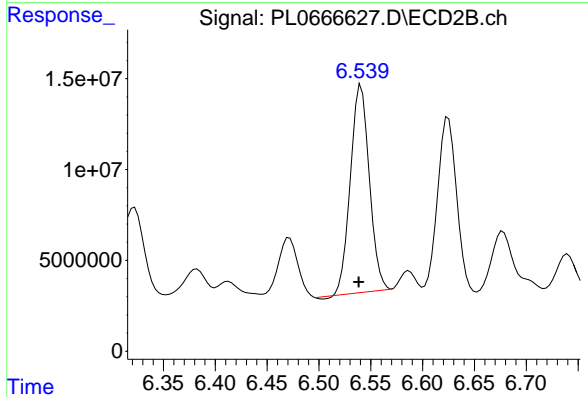
#11 alpha-Chlordane

R.T.: 6.382 min
 Delta R.T.: 0.000 min
 Response: 19596300
 Conc: 4.72 ng/ml

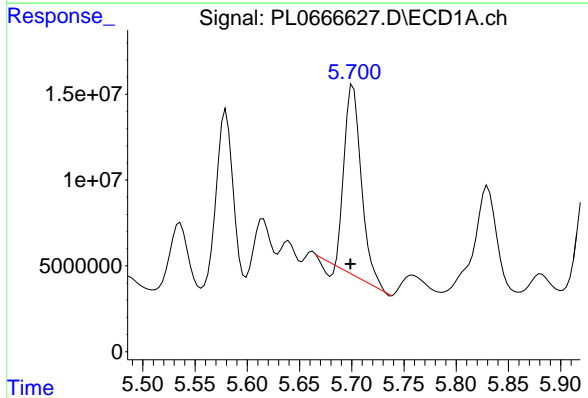


#12 4,4'-DDE
 R.T.: 5.580 min
 Delta R.T.: 0.006 min
 Response: 65183144
 Conc: 14.29 ng/ml

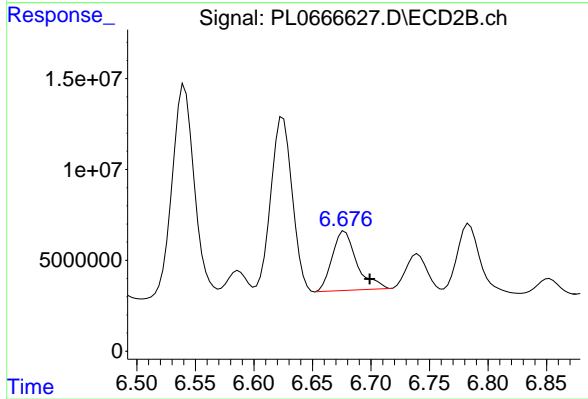
Instrument :
 ECD_L
 ClientSampled :



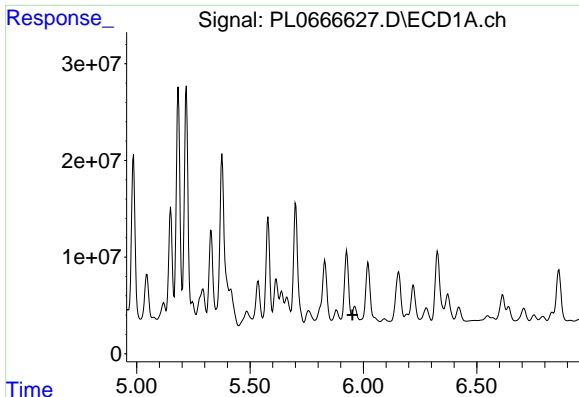
#12 4,4'-DDE
 R.T.: 6.541 min
 Delta R.T.: 0.002 min
 Response: 144597979
 Conc: 38.11 ng/ml



#13 Dieldrin
 R.T.: 5.701 min
 Delta R.T.: 0.003 min
 Response: 123751263
 Conc: 25.51 ng/ml



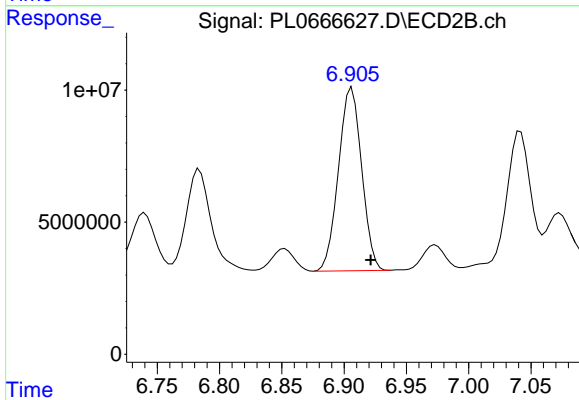
#13 Dieldrin
 R.T.: 6.678 min
 Delta R.T.: -0.021 min
 Response: 47673551
 Conc: 12.18 ng/ml



#14 Endrin

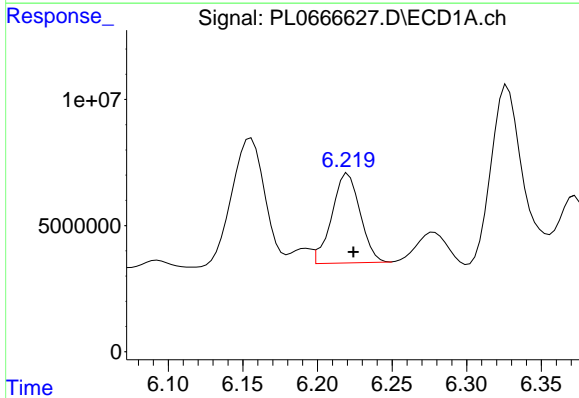
R.T.: 5.962 min
 Delta R.T.: 0.010 min
 Response: -48683806
 Conc: N.D.

Instrument :
 ECD_L
 ClientSampled :



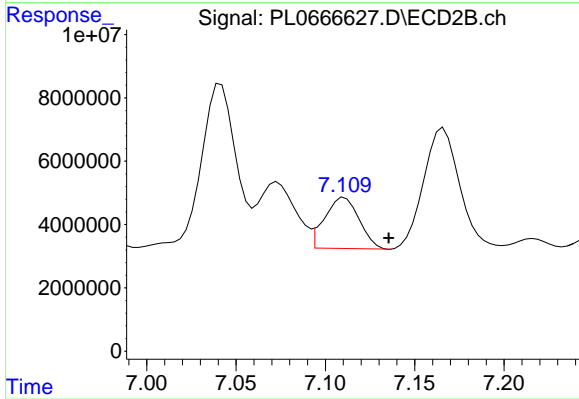
#14 Endrin

R.T.: 6.906 min
 Delta R.T.: -0.015 min
 Response: 90049478
 Conc: 28.74 ng/ml



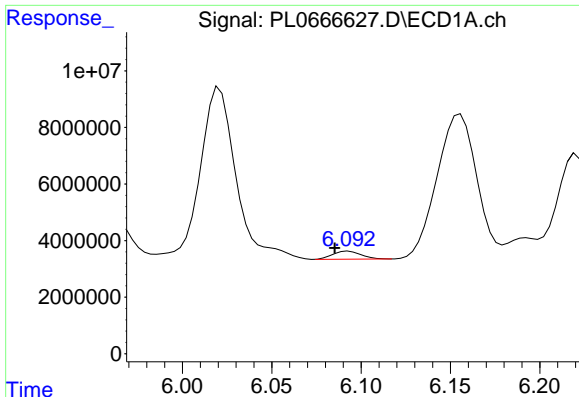
#15 Endosulfan II

R.T.: 6.220 min
 Delta R.T.: -0.004 min
 Response: 46976013
 Conc: 11.38 ng/ml



#15 Endosulfan II

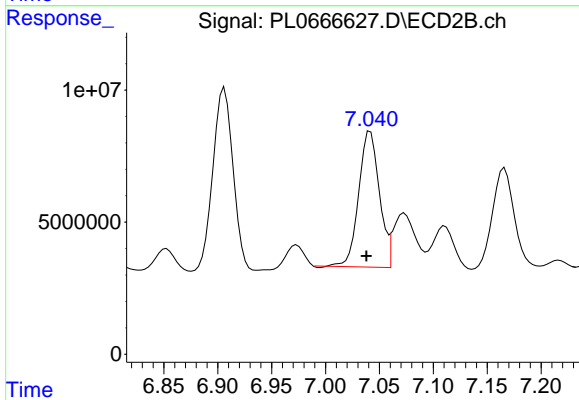
R.T.: 7.111 min
 Delta R.T.: -0.025 min
 Response: 21732650
 Conc: 6.58 ng/ml



#16 4,4'-DDD

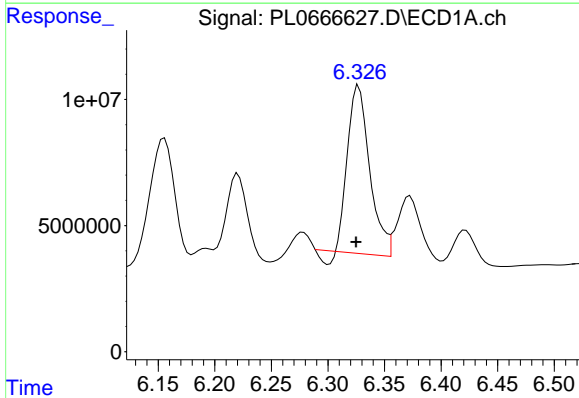
R.T.: 6.093 min
 Delta R.T.: 0.008 min
 Response: 3076645
 Conc: 0.81 ng/ml

Instrument :
 ECD_L
 ClientSampled :



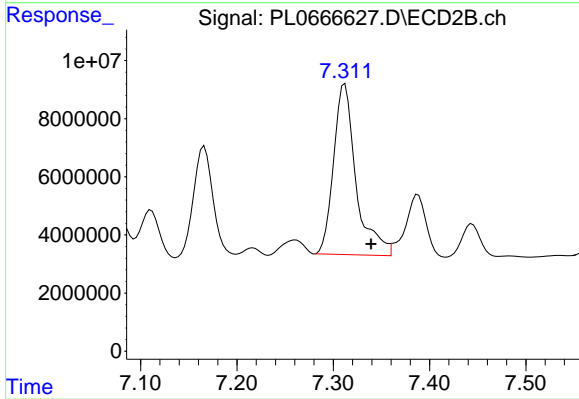
#16 4,4'-DDD

R.T.: 7.042 min
 Delta R.T.: 0.004 min
 Response: 68275967
 Conc: 21.92 ng/ml



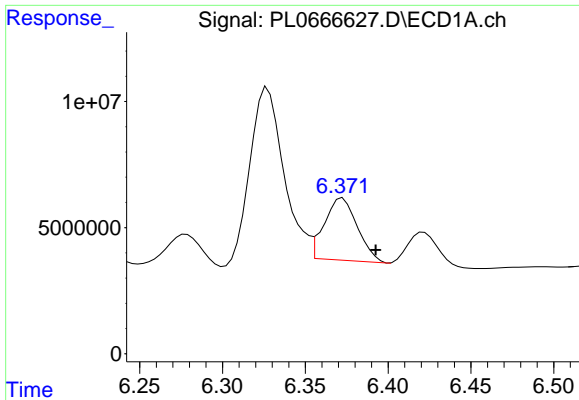
#17 4,4'-DDT

R.T.: 6.327 min
 Delta R.T.: 0.003 min
 Response: 88918594
 Conc: 22.80 ng/ml



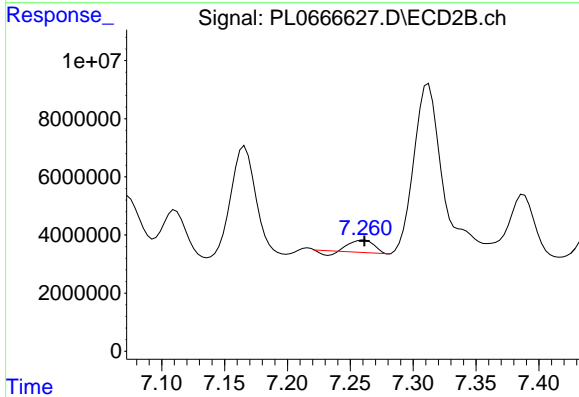
#17 4,4'-DDT

R.T.: 7.312 min
 Delta R.T.: -0.027 min
 Response: 95156960
 Conc: 29.40 ng/ml

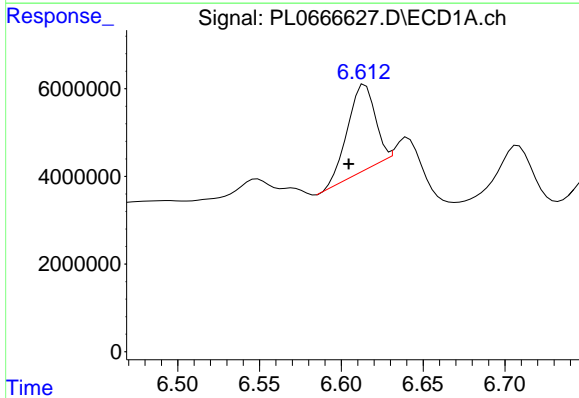


#18 Endrin aldehyde
 R.T.: 6.372 min
 Delta R.T.: -0.020 min
 Response: 34182862
 Conc: 10.09 ng/ml

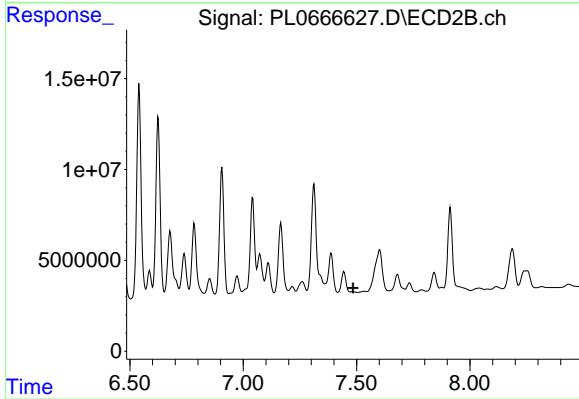
Instrument :
 ECD_L
 ClientSampleId :



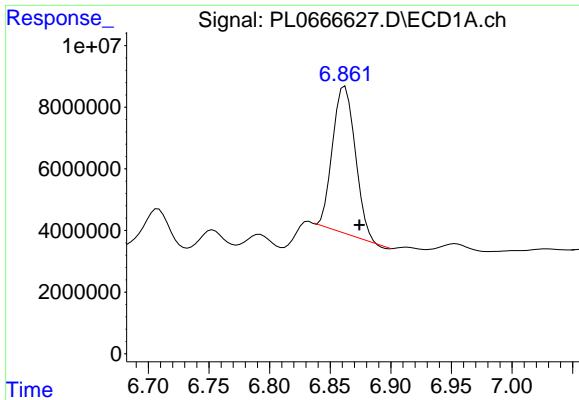
#18 Endrin aldehyde
 R.T.: 7.261 min
 Delta R.T.: 0.000 min
 Response: 5003014
 Conc: 1.79 ng/ml



#19 Endosulfan Sulfate
 R.T.: 6.615 min
 Delta R.T.: 0.010 min
 Response: 22597055
 Conc: 5.23 ng/ml



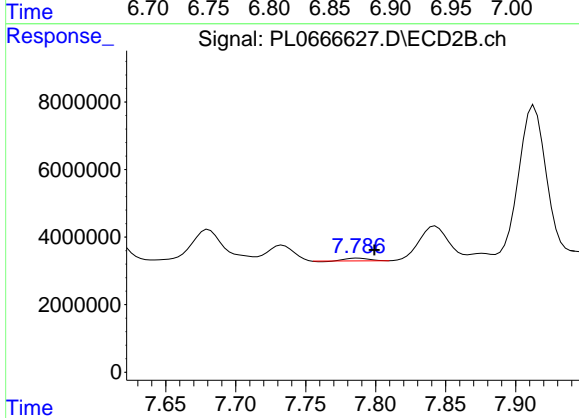
#19 Endosulfan Sulfate
 R.T.: 0.000 min
 Exp R.T. : 7.485 min
 Response: 0
 Conc: N.D.



#20 Methoxychlor

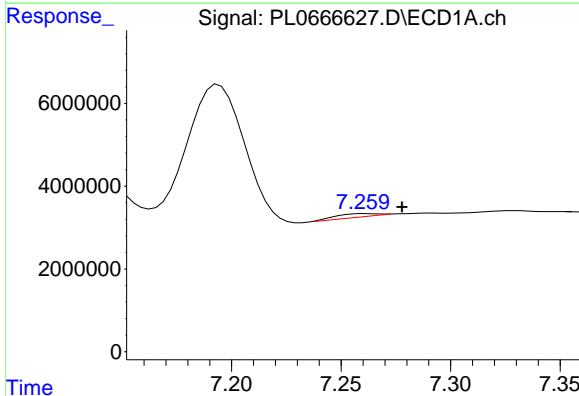
R.T.: 6.862 min
 Delta R.T.: -0.012 min
 Response: 62391564
 Conc: 31.76 ng/ml

Instrument :
 ECD_L
 ClientSampled :



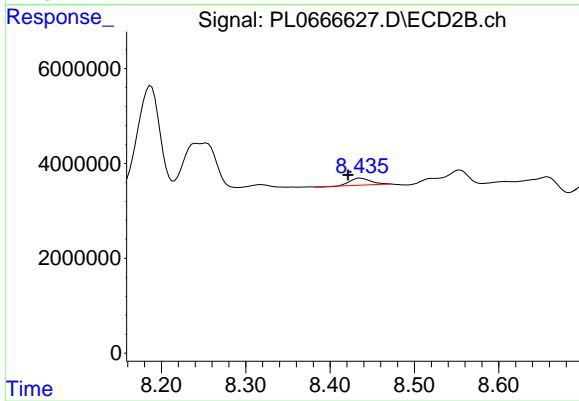
#20 Methoxychlor

R.T.: 7.787 min
 Delta R.T.: -0.012 min
 Response: 827189
 Conc: 0.46 ng/ml



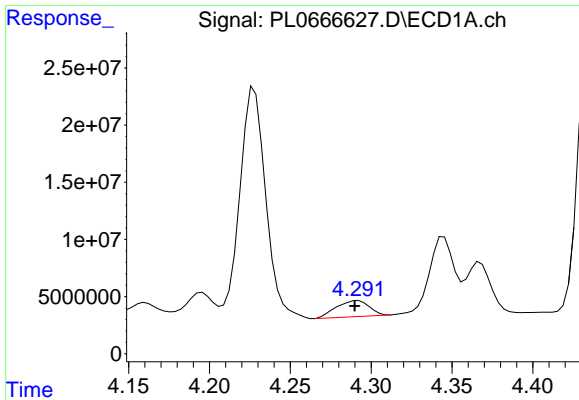
#22 Mirex

R.T.: 7.261 min
 Delta R.T.: -0.017 min
 Response: 1089950
 Conc: 0.30 ng/ml



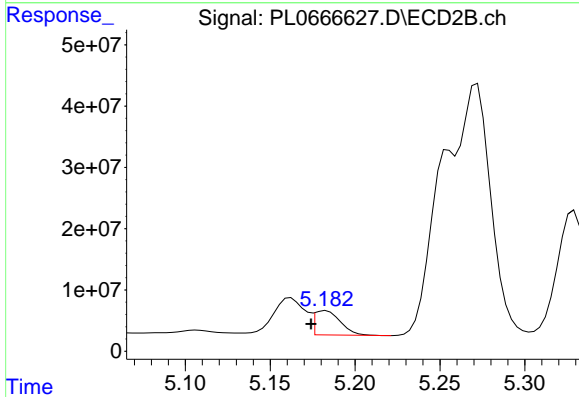
#22 Mirex

R.T.: 8.436 min
 Delta R.T.: 0.015 min
 Response: 2541975
 Conc: 0.91 ng/ml

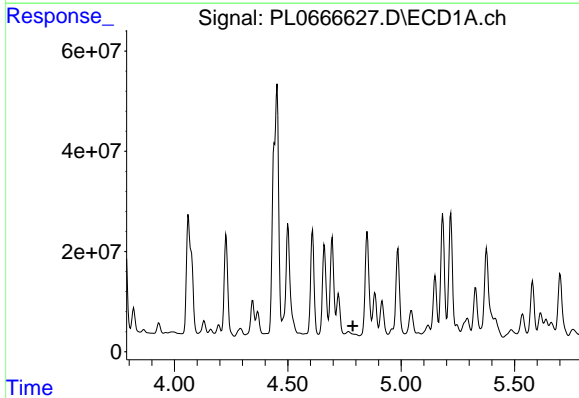


#23 Chlordane-1
 R.T.: 4.292 min
 Delta R.T.: 0.002 min
 Response: 19747782
 Conc: 116.83 ng/ml

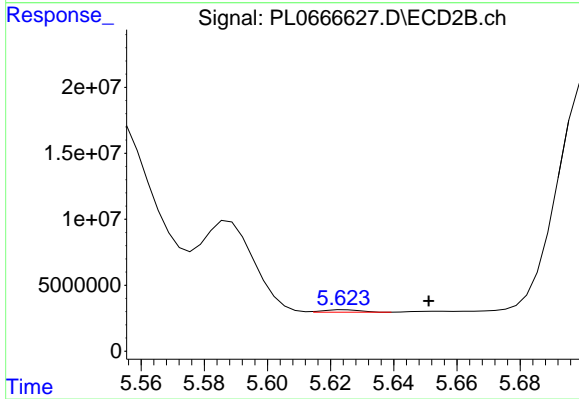
Instrument :
 ECD_L
 ClientSampled :



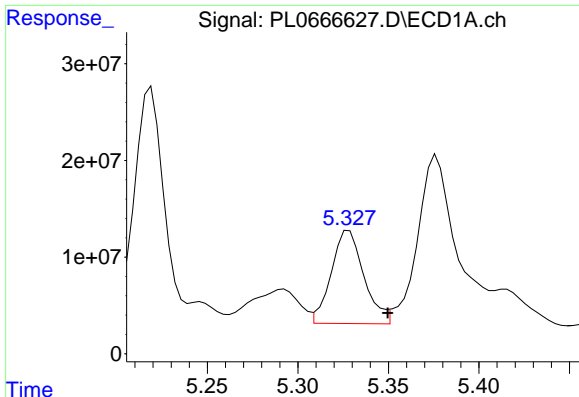
#23 Chlordane-1
 R.T.: 5.183 min
 Delta R.T.: 0.009 min
 Response: 42013662
 Conc: 300.27 ng/ml



#24 Chlordane-2
 R.T.: 4.768 min
 Delta R.T.: -0.018 min
 Response: -77379194
 Conc: N.D.



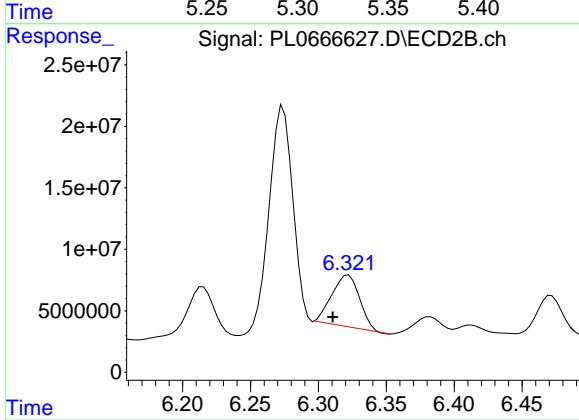
#24 Chlordane-2
 R.T.: 5.625 min
 Delta R.T.: -0.027 min
 Response: 1517170
 Conc: 9.34 ng/ml



#25 Chlordane-3

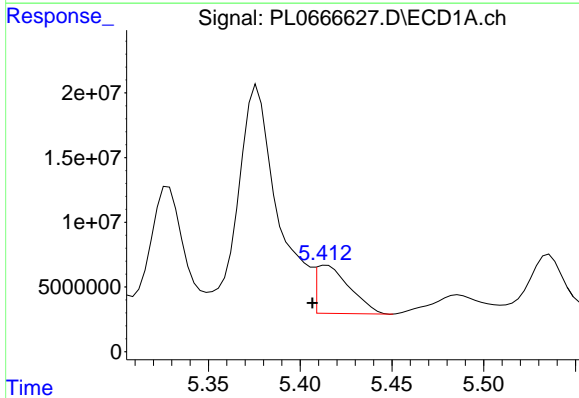
R.T.: 5.328 min
Delta R.T.: -0.021 min
Response: 121087980
Conc: 243.32 ng/ml

Instrument :
ECD_L
ClientSampled :



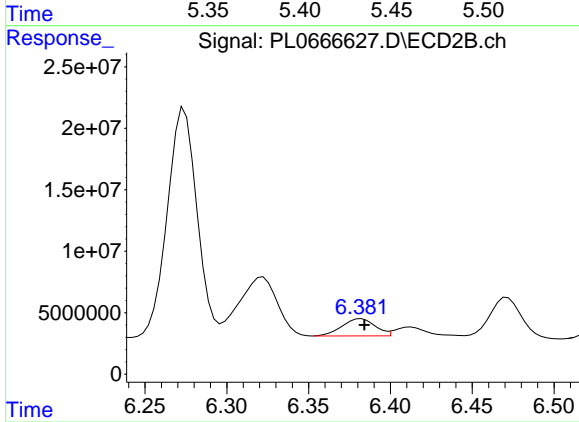
#25 Chlordane-3

R.T.: 6.322 min
Delta R.T.: 0.012 min
Response: 59618388
Conc: 106.36 ng/ml



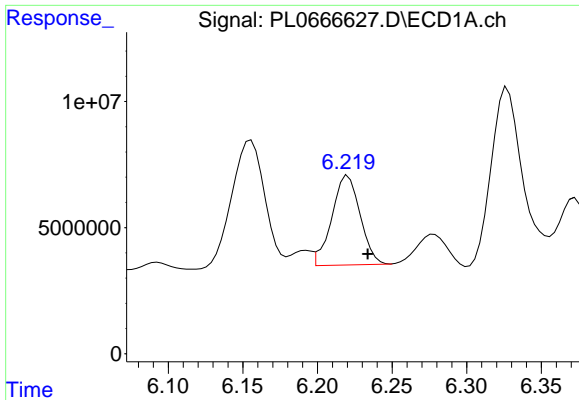
#26 Chlordane-4

R.T.: 5.415 min
Delta R.T.: 0.008 min
Response: 47310776
Conc: 112.11 ng/ml



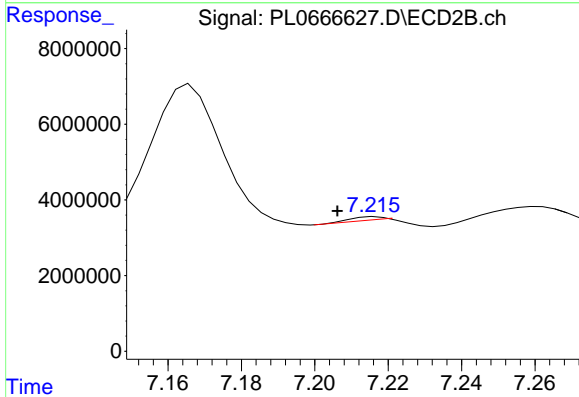
#26 Chlordane-4

R.T.: 6.382 min
Delta R.T.: -0.002 min
Response: 19596300
Conc: 29.19 ng/ml

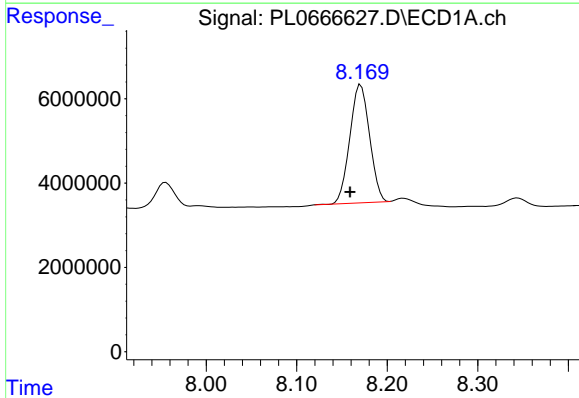


#27 Chlordane-5
 R.T.: 6.220 min
 Delta R.T.: -0.013 min
 Response: 46976013
 Conc: 278.96 ng/ml

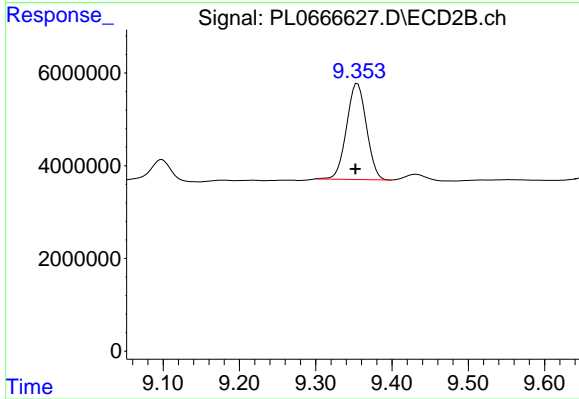
Instrument :
 ECD_L
 ClientSampleId :



#27 Chlordane-5
 R.T.: 7.217 min
 Delta R.T.: 0.010 min
 Response: 582601
 Conc: 4.96 ng/ml



#28 Decachlorobiphenyl
 R.T.: 8.171 min
 Delta R.T.: 0.012 min
 Response: 42584505
 Conc: 11.11 ng/ml



#28 Decachlorobiphenyl
 R.T.: 9.355 min
 Delta R.T.: 0.003 min
 Response: 37534195
 Conc: 12.13 ng/ml