

Data Path : Z:\pestpcbsrv\HPCHEM1\ECD_L\Data\PL050321\
 Data File : PL0CCC11.D
 Signal(s) : Signal #1: ECD1A.ch Signal #2: ECD2B.ch
 Acq On : 03 May 2021 20:42
 Operator : AR\AJ
 Sample : PSTCCC050
 Misc :
 ALS Vial : 100 Sample Multiplier: 1

Instrument :
 ECD_L
 ClientSampled :

Integration File signal 1: autoint1.e
 Integration File signal 2: autoint2.e
 Quant Time: May 04 05:27:12 2021
 Quant Method : Z:\pestpcbsrv\HPCHEM1\ECD_L\methods\PL042621.M
 Quant Title : GC Extractables
 QLast Update : Wed Apr 28 08:49:49 2021
 Response via : Initial Calibration
 Integrator: ChemStation

Volume Inj. : 1 µl
 Signal #1 Phase : ZB-MR2 Signal #2 Phase: ZB-MR1
 Signal #1 Info : 30M x 0.32mm x0.2 Signal #2 Info : 30M x 0.32mm x0.5µm

	Compound	RT#1	RT#2	Resp#1	Resp#2	ng/ml	ng/ml

System Monitoring Compounds							
1)	SA Tetrachlo...	3.427	4.153	182.3E6	185.3E6	48.387	52.756
28)	SA Decachlor...	8.163	9.353	157.6E6	136.8E6	41.099	44.235
Target Compounds							
2)	A alpha-BHC	3.861	4.558	304.9E6	285.2E6	48.997	55.445
3)	MA gamma-BHC...	4.141	4.851	275.3E6	259.2E6	50.036	53.734
4)	MA Heptachlor	4.439	5.367	257.6E6	243.7E6	46.140	49.364
5)	MB Aldrin	4.683	5.679	261.1E6	239.0E6	50.058	51.131
6)	B beta-BHC	4.390	5.027	123.2E6	124.7E6	46.572	54.235
7)	B delta-BHC	4.590	5.251	288.4E6	248.1E6	50.687	56.009
8)	Heptachlo...	5.122	6.074	245.5E6	194.7E6	50.125	52.626
9)	A Endosulfan I	5.457	6.438	231.2E6	195.8E6	50.114	51.406
10)	B gamma-Chl...	5.348	6.311	256.8E6	217.8E6	50.401	52.309
11)	B alpha-Chl...	5.406	6.384	249.0E6	213.2E6	50.570	51.395
12)	B 4,4'-DDE	5.573	6.539	232.7E6	197.2E6	51.006	51.980
13)	MA Dieldrin	5.698	6.700	247.9E6	200.9E6	51.107	51.307
14)	MA Endrin	5.952	6.922	216.8E6	150.4E6	49.764	47.998
15)	B Endosulfa...	6.224	7.136	203.5E6	162.2E6	49.312	49.115
16)	A 4,4'-DDD	6.085	7.039	213.7E6	170.6E6	56.256	54.758
17)	MA 4,4'-DDT	6.325	7.340	147.9E6	119.2E6	37.931	36.843
18)	B Endrin al...	6.392	7.262	166.0E6	134.8E6	48.999	48.177
19)	B Endosulfa...	6.605	7.486	213.5E6	163.7E6	49.405	47.870
20)	A Methoxychlor	6.874	7.801	82783948	66504948	42.145	37.075
21)	B Endrin ke...	7.091	7.967	211.2E6	161.1E6	48.206	45.398
22)	Mirex	7.278	8.422	171.6E6	122.1E6	46.712	43.757
23)	Chlordane-1	4.314f	5.201f	1340082	4780640	7.928	34.167 #
24)	Chlordane-2	0.000	5.679f	0	239.0E6	N.D.	1471.837 #
25)	Chlordane-3	5.348	6.311	256.8E6	217.8E6	516.095	388.483
26)	Chlordane-4	5.406	6.384	249.0E6	213.2E6	590.032	317.557 #
27)	Chlordane-5	6.224	0.000	203.5E6	0	1208.311	N.D. #

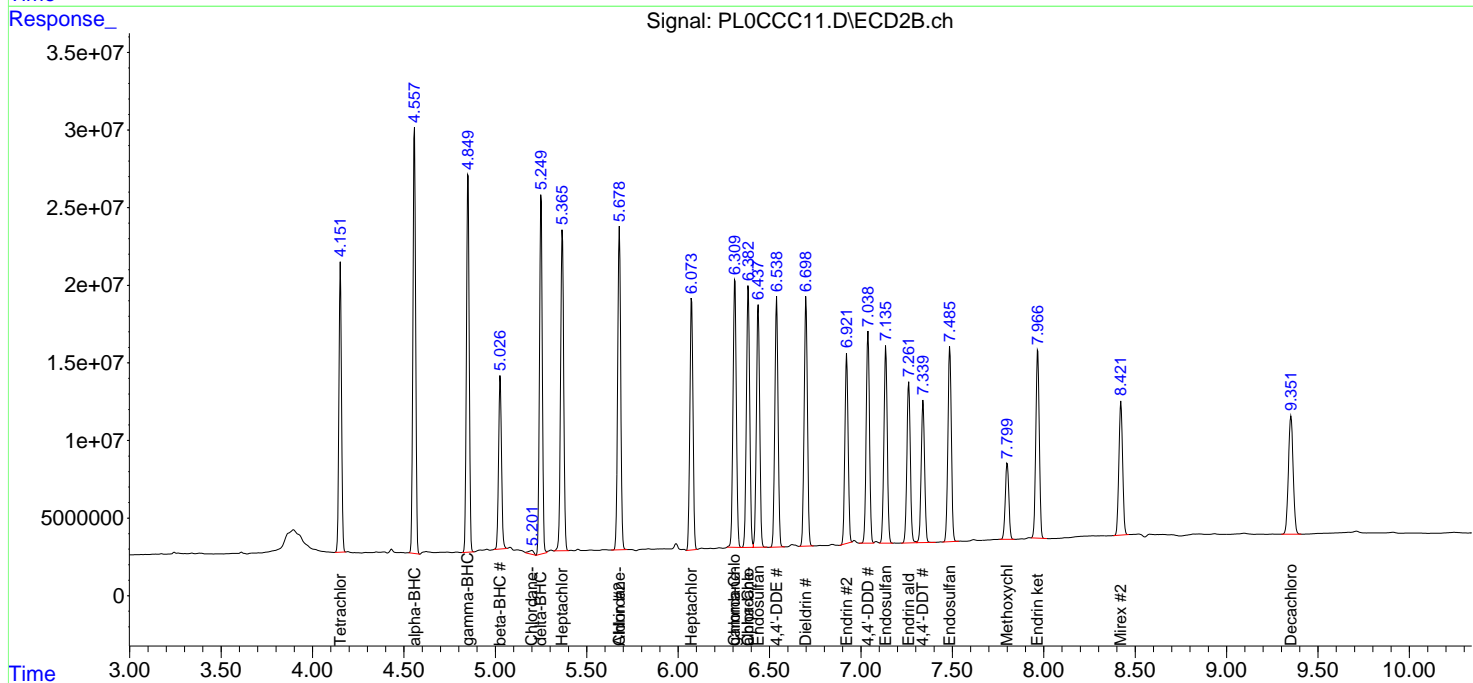
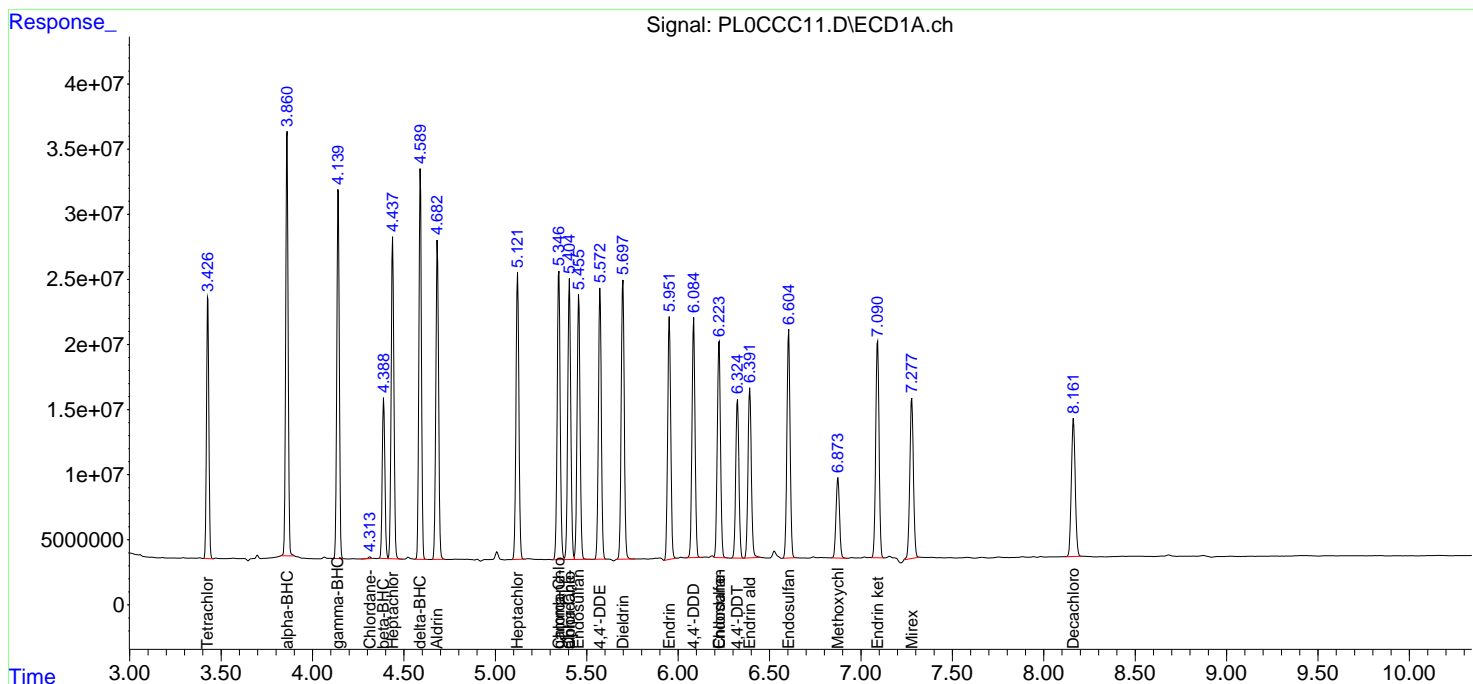
(f)=RT Delta > 1/2 Window (#)=Amounts differ by > 25% (m)=manual int.

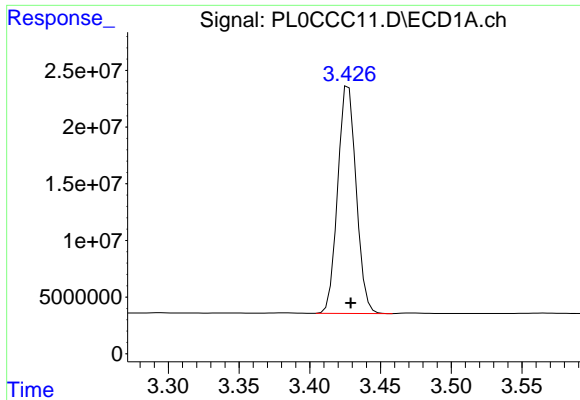
Data Path : Z:\pestpcbsrv\HPCHEM1\ECD_L\Data\PL050321\
 Data File : PL0CCC11.D
 Signal(s) : Signal #1: ECD1A.ch Signal #2: ECD2B.ch
 Acq On : 03 May 2021 20:42
 Operator : AR\AJ
 Sample : PSTCCC050
 Misc :
 ALS Vial : 100 Sample Multiplier: 1

Instrument :
 ECD_L
 ClientSampled :

Integration File signal 1: autoint1.e
 Integration File signal 2: autoint2.e
 Quant Time: May 04 05:27:12 2021
 Quant Method : Z:\pestpcbsrv\HPCHEM1\ECD_L\methods\PL042621.M
 Quant Title : GC Extractables
 QLast Update : Wed Apr 28 08:49:49 2021
 Response via : Initial Calibration
 Integrator: ChemStation

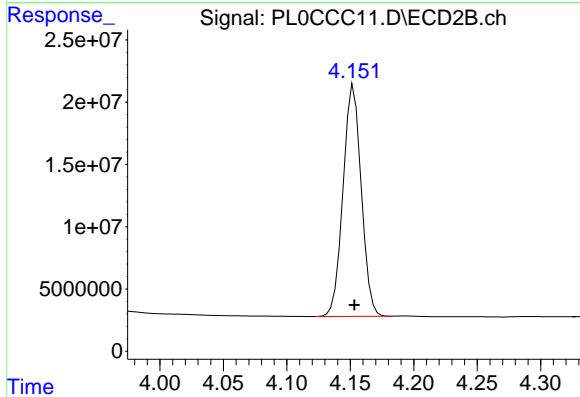
Volume Inj. : 1 µl
 Signal #1 Phase : ZB-MR2 Signal #2 Phase: ZB-MR1
 Signal #1 Info : 30M x 0.32mm x0.2 Signal #2 Info : 30M x 0.32mm x0.5µm



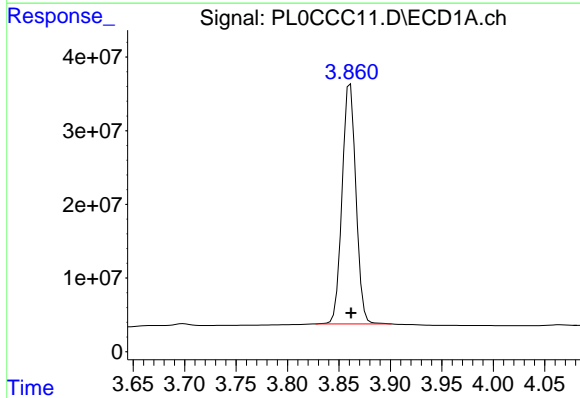


#1 Tetrachloro-m-xylene
 R.T.: 3.427 min
 Delta R.T.: -0.002 min
 Response: 182326438
 Conc: 48.39 ng/ml

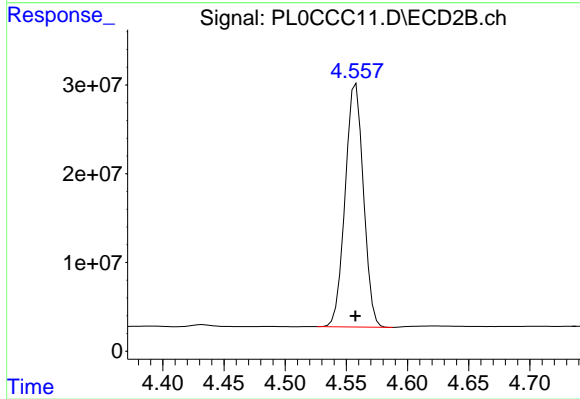
Instrument :
 ECD_L
 ClientSampleId :



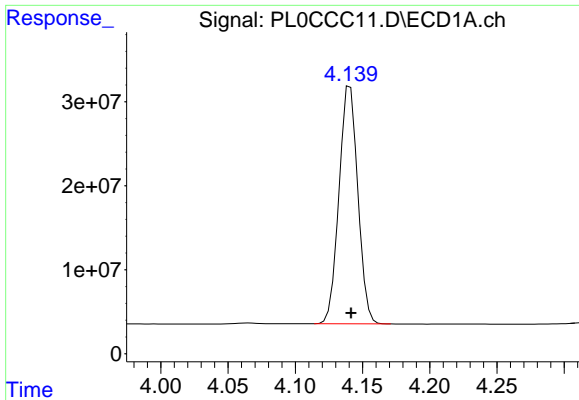
#1 Tetrachloro-m-xylene
 R.T.: 4.153 min
 Delta R.T.: 0.000 min
 Response: 185280794
 Conc: 52.76 ng/ml



#2 alpha-BHC
 R.T.: 3.861 min
 Delta R.T.: 0.000 min
 Response: 304906360
 Conc: 49.00 ng/ml

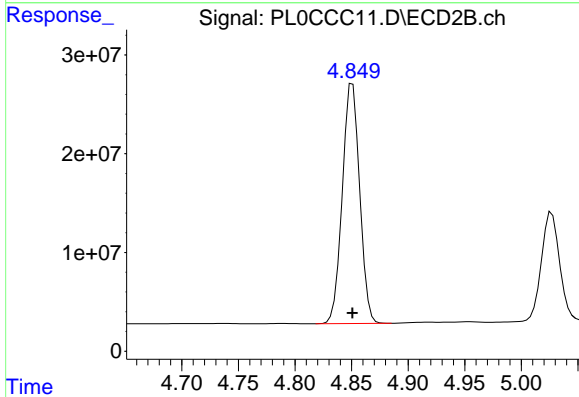


#2 alpha-BHC
 R.T.: 4.558 min
 Delta R.T.: 0.000 min
 Response: 285233343
 Conc: 55.44 ng/ml

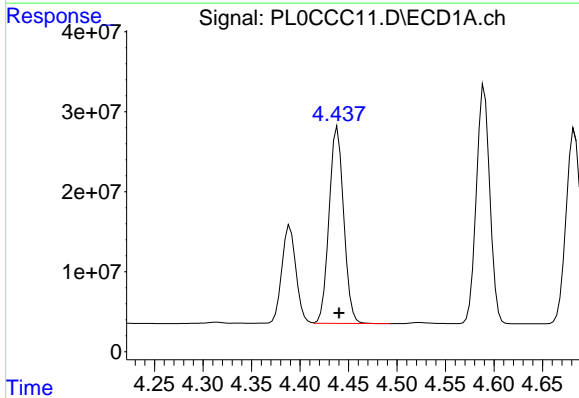


#3 gamma-BHC (Lindane)
 R.T.: 4.141 min
 Delta R.T.: 0.000 min
 Response: 275308209
 Conc: 50.04 ng/ml

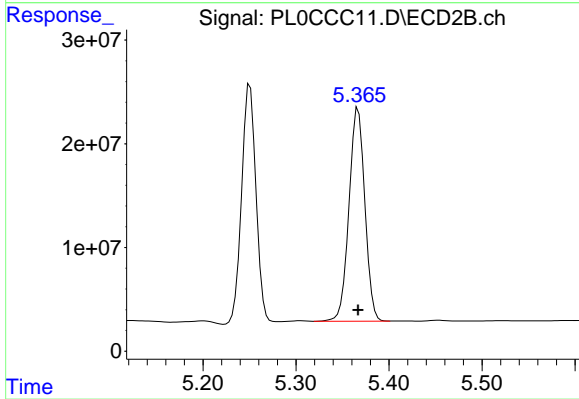
Instrument :
 ECD_L
 ClientSampleId :



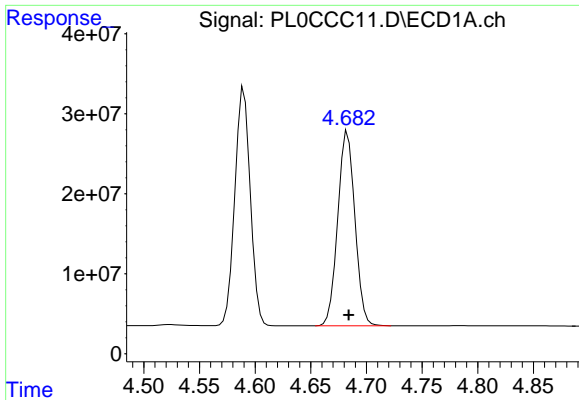
#3 gamma-BHC (Lindane)
 R.T.: 4.851 min
 Delta R.T.: 0.000 min
 Response: 259218089
 Conc: 53.73 ng/ml



#4 Heptachlor
 R.T.: 4.439 min
 Delta R.T.: -0.001 min
 Response: 257608791
 Conc: 46.14 ng/ml

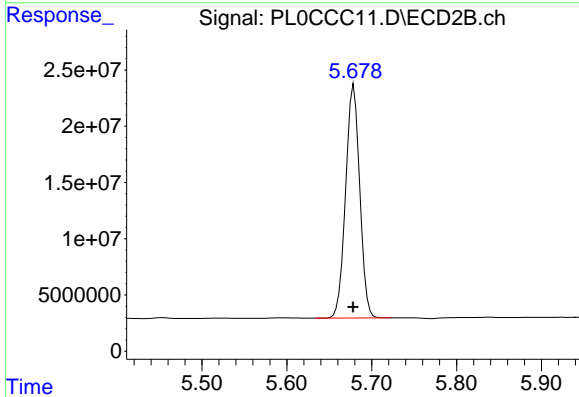


#4 Heptachlor
 R.T.: 5.367 min
 Delta R.T.: 0.000 min
 Response: 243707081
 Conc: 49.36 ng/ml

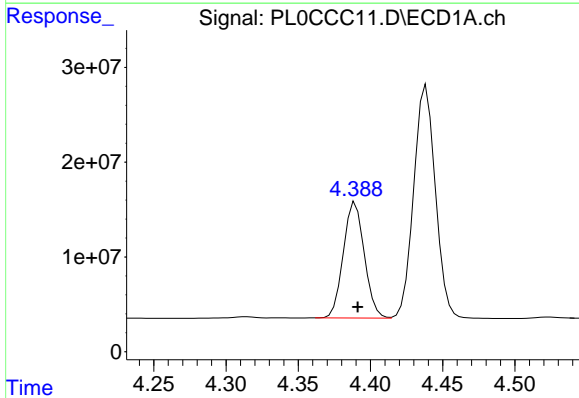


#5 Aldrin
 R.T.: 4.683 min
 Delta R.T.: -0.001 min
 Response: 261081437
 Conc: 50.06 ng/ml

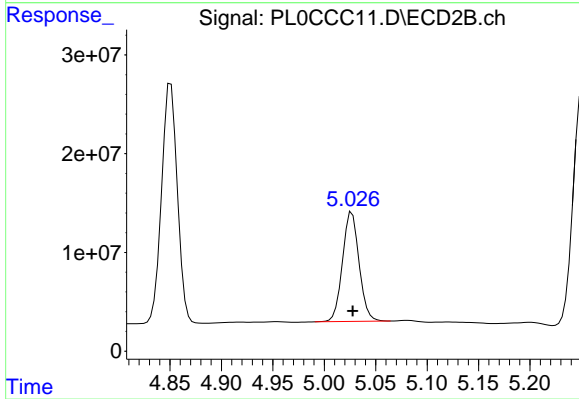
Instrument :
 ECD_L
 ClientSampleId :



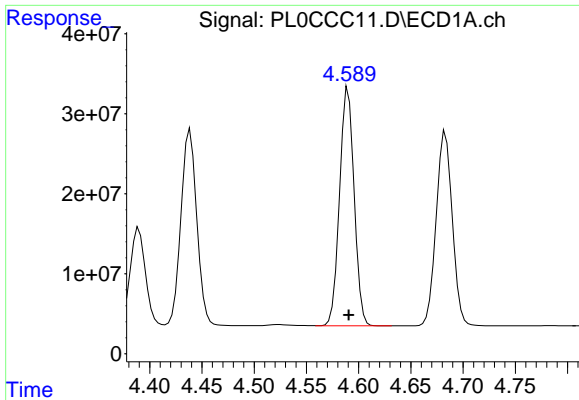
#5 Aldrin
 R.T.: 5.679 min
 Delta R.T.: 0.000 min
 Response: 239042854
 Conc: 51.13 ng/ml



#6 beta-BHC
 R.T.: 4.390 min
 Delta R.T.: -0.002 min
 Response: 123196659
 Conc: 46.57 ng/ml

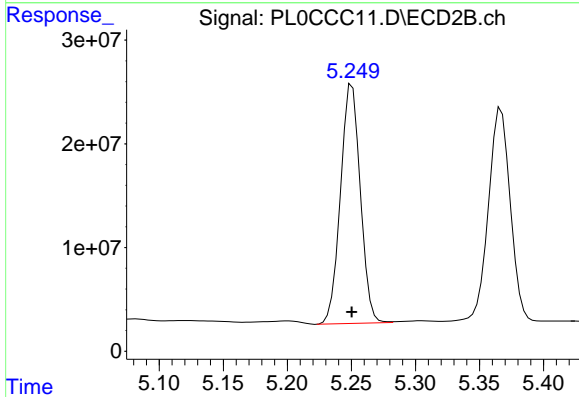


#6 beta-BHC
 R.T.: 5.027 min
 Delta R.T.: 0.000 min
 Response: 124651979
 Conc: 54.23 ng/ml

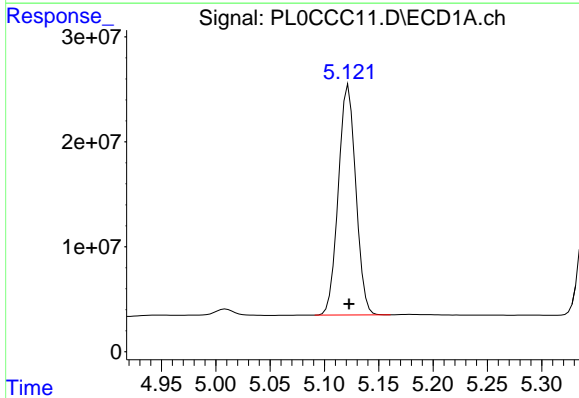


#7 delta-BHC
 R.T.: 4.590 min
 Delta R.T.: 0.000 min
 Response: 288366732
 Conc: 50.69 ng/ml

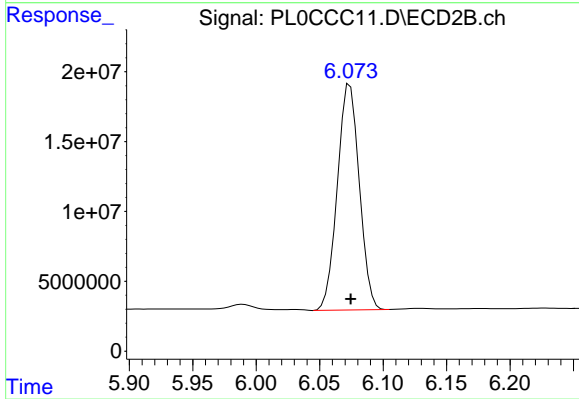
Instrument :
 ECD_L
 ClientSampleId :



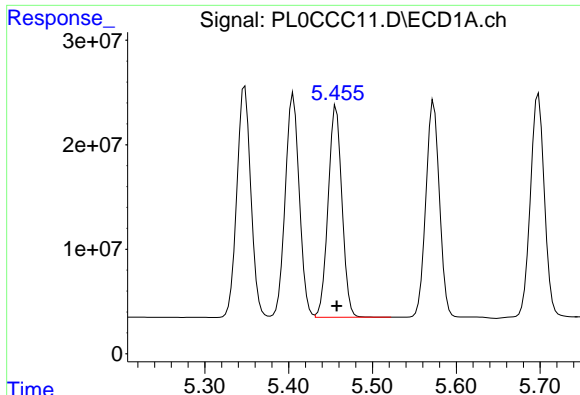
#7 delta-BHC
 R.T.: 5.251 min
 Delta R.T.: 0.000 min
 Response: 248113598
 Conc: 56.01 ng/ml



#8 Heptachlor epoxide
 R.T.: 5.122 min
 Delta R.T.: 0.000 min
 Response: 245472430
 Conc: 50.12 ng/ml

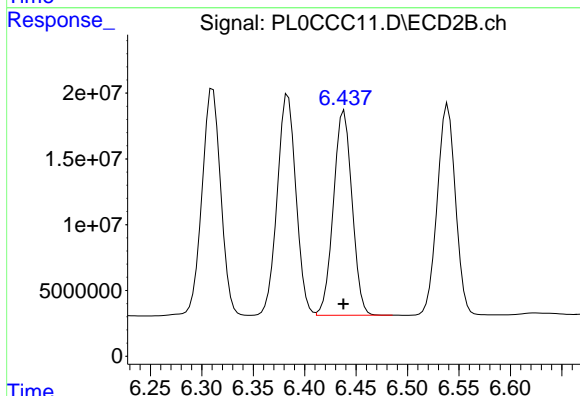


#8 Heptachlor epoxide
 R.T.: 6.074 min
 Delta R.T.: 0.000 min
 Response: 194698120
 Conc: 52.63 ng/ml

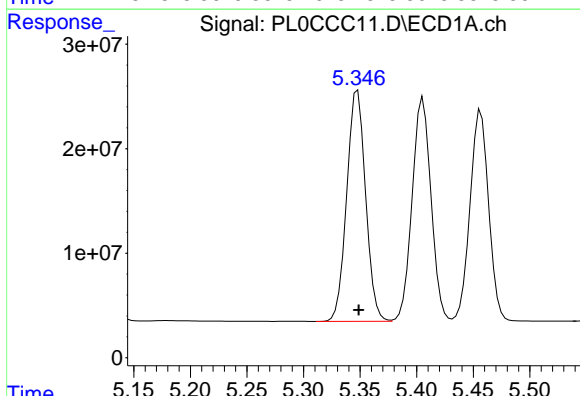


#9 Endosulfan I
 R.T.: 5.457 min
 Delta R.T.: 0.000 min
 Response: 231214090
 Conc: 50.11 ng/ml

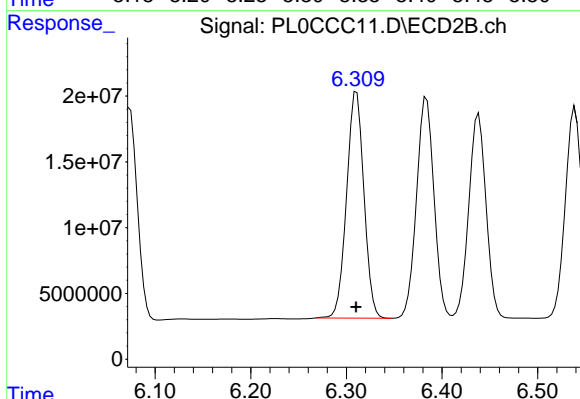
Instrument :
 ECD_L
 ClientSampleId :



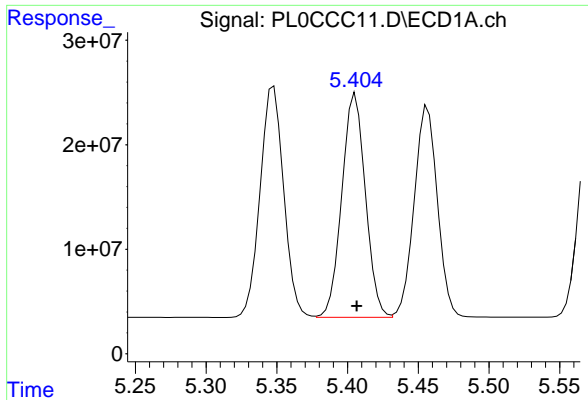
#9 Endosulfan I
 R.T.: 6.438 min
 Delta R.T.: 0.000 min
 Response: 195760246
 Conc: 51.41 ng/ml



#10 gamma-Chlordane
 R.T.: 5.348 min
 Delta R.T.: -0.001 min
 Response: 256833516
 Conc: 50.40 ng/ml

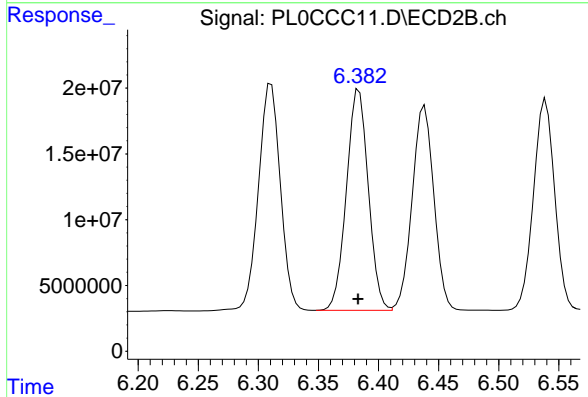


#10 gamma-Chlordane
 R.T.: 6.311 min
 Delta R.T.: 0.000 min
 Response: 217752083
 Conc: 52.31 ng/ml

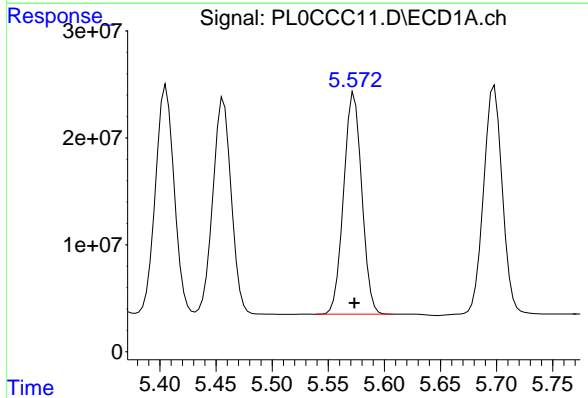


#11 alpha-Chlordane
 R.T.: 5.406 min
 Delta R.T.: 0.000 min
 Response: 248998041
 Conc: 50.57 ng/ml

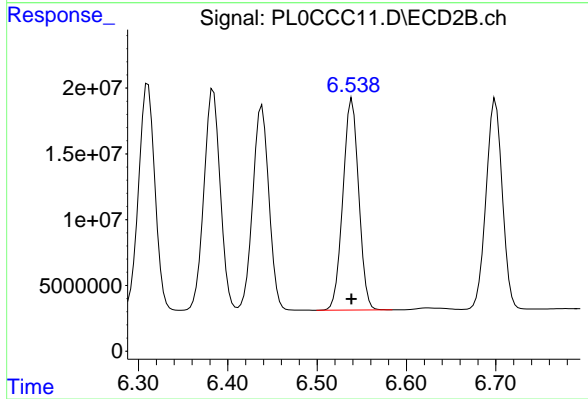
Instrument :
 ECD_L
 ClientSampled :



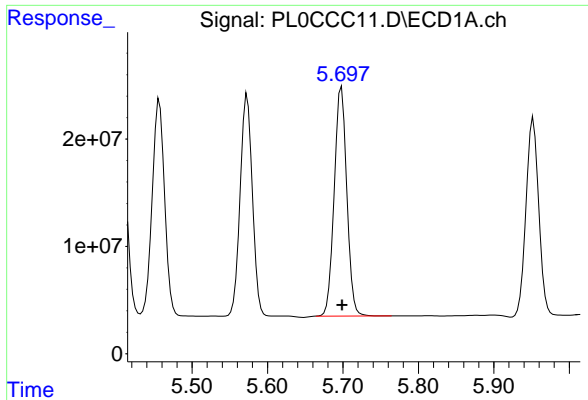
#11 alpha-Chlordane
 R.T.: 6.384 min
 Delta R.T.: 0.000 min
 Response: 213201359
 Conc: 51.40 ng/ml



#12 4,4'-DDE
 R.T.: 5.573 min
 Delta R.T.: 0.000 min
 Response: 232734896
 Conc: 51.01 ng/ml

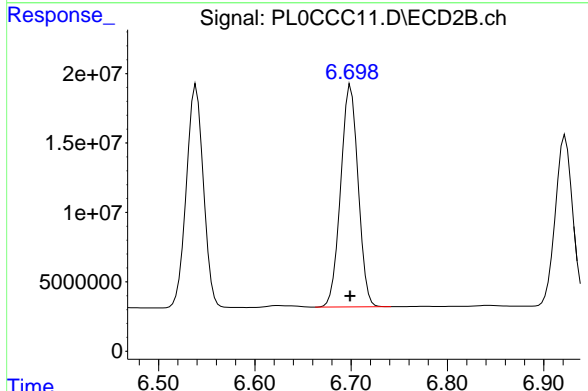


#12 4,4'-DDE
 R.T.: 6.539 min
 Delta R.T.: 0.000 min
 Response: 197222327
 Conc: 51.98 ng/ml

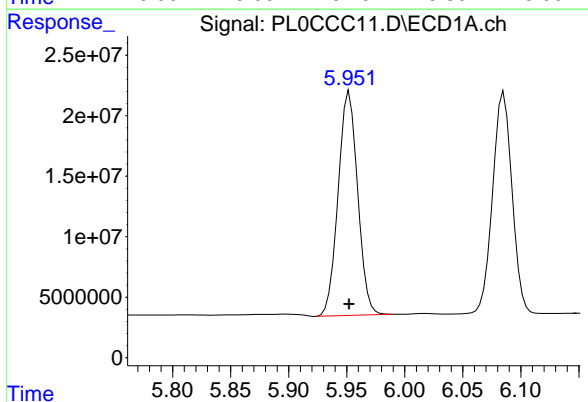


#13 Dieldrin
 R.T.: 5.698 min
 Delta R.T.: 0.000 min
 Response: 247947805
 Conc: 51.11 ng/ml

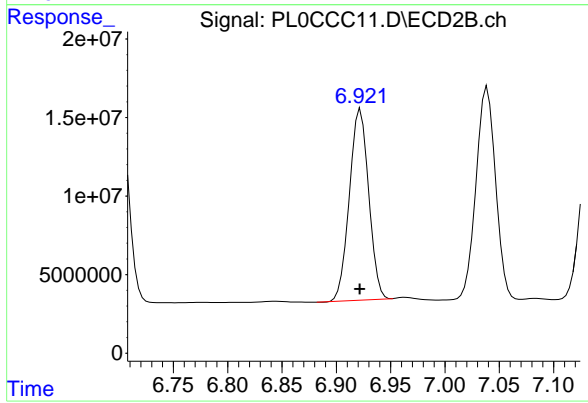
Instrument :
 ECD_L
 ClientSampled :



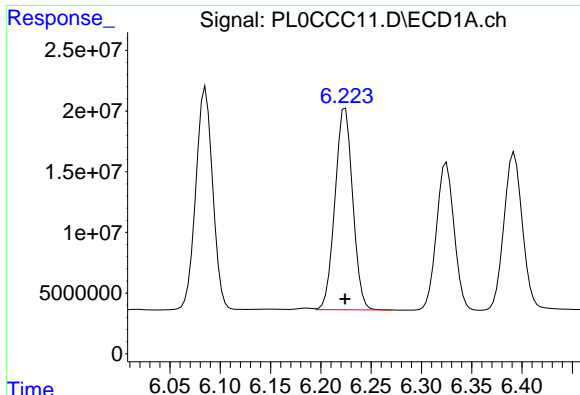
#13 Dieldrin
 R.T.: 6.700 min
 Delta R.T.: 0.000 min
 Response: 200875796
 Conc: 51.31 ng/ml



#14 Endrin
 R.T.: 5.952 min
 Delta R.T.: 0.000 min
 Response: 216777968
 Conc: 49.76 ng/ml



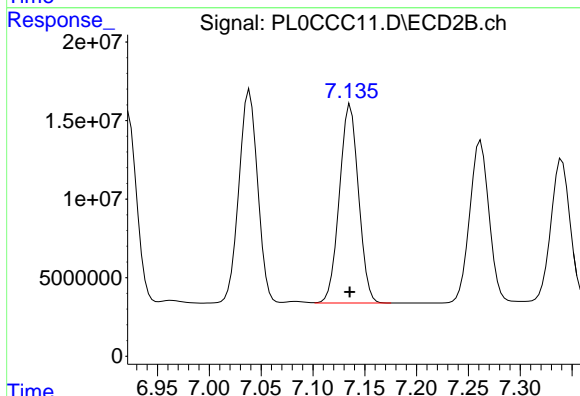
#14 Endrin
 R.T.: 6.922 min
 Delta R.T.: 0.000 min
 Response: 150412623
 Conc: 48.00 ng/ml



#15 Endosulfan II

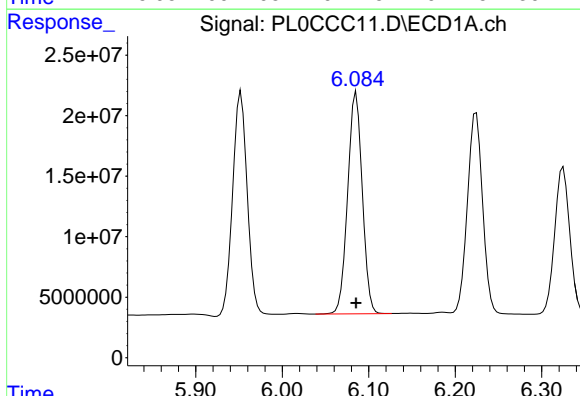
R.T.: 6.224 min
 Delta R.T.: 0.000 min
 Response: 203475957
 Conc: 49.31 ng/ml

Instrument :
 ECD_L
 ClientSampleId :



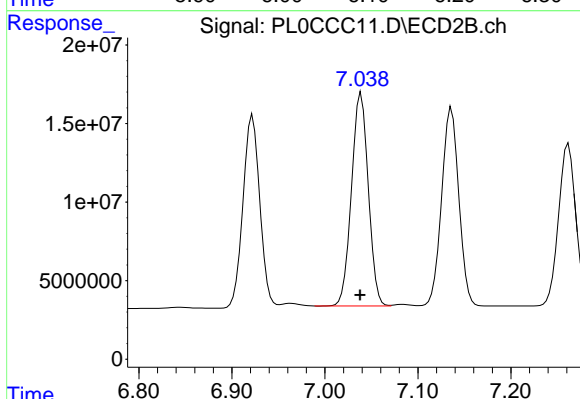
#15 Endosulfan II

R.T.: 7.136 min
 Delta R.T.: 0.000 min
 Response: 162215702
 Conc: 49.11 ng/ml



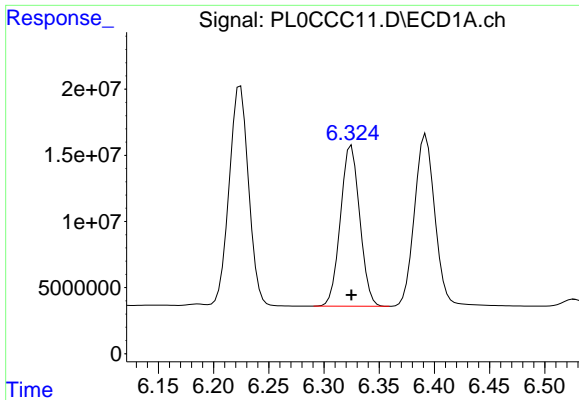
#16 4,4'-DDD

R.T.: 6.085 min
 Delta R.T.: 0.000 min
 Response: 213670190
 Conc: 56.26 ng/ml



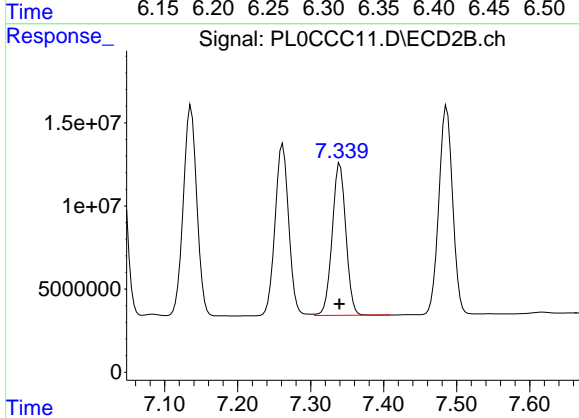
#16 4,4'-DDD

R.T.: 7.039 min
 Delta R.T.: 0.001 min
 Response: 170561082
 Conc: 54.76 ng/ml

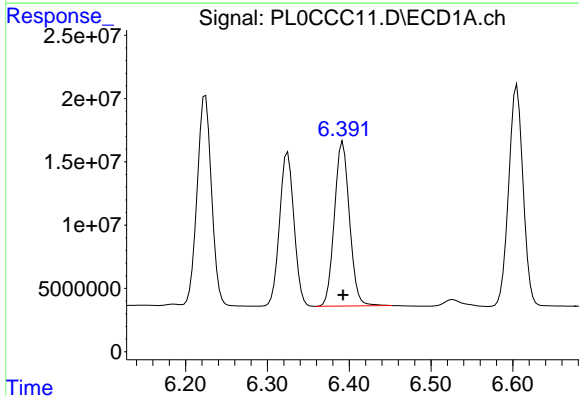


#17 4,4'-DDT
 R.T.: 6.325 min
 Delta R.T.: 0.000 min
 Response: 147901845
 Conc: 37.93 ng/ml

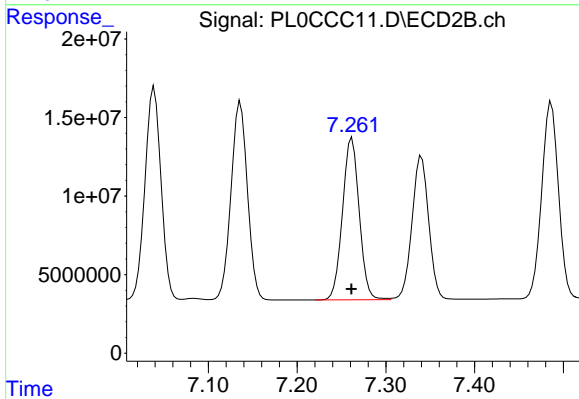
Instrument :
 ECD_L
 ClientSampled :



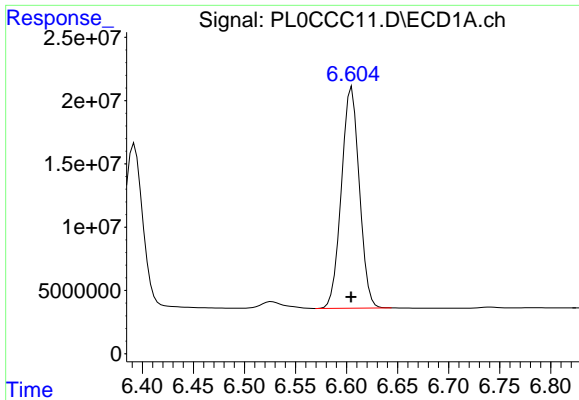
#17 4,4'-DDT
 R.T.: 7.340 min
 Delta R.T.: 0.000 min
 Response: 119245333
 Conc: 36.84 ng/ml



#18 Endrin aldehyde
 R.T.: 6.392 min
 Delta R.T.: 0.000 min
 Response: 166010208
 Conc: 49.00 ng/ml

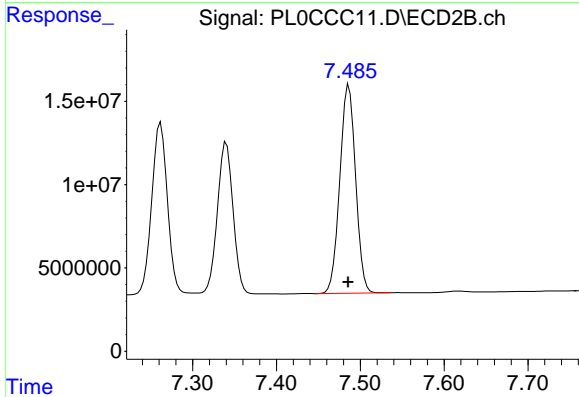


#18 Endrin aldehyde
 R.T.: 7.262 min
 Delta R.T.: 0.000 min
 Response: 134752980
 Conc: 48.18 ng/ml

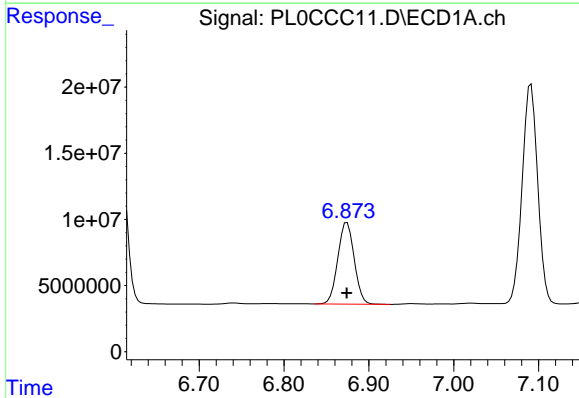


#19 Endosulfan Sulfate
 R.T.: 6.605 min
 Delta R.T.: 0.000 min
 Response: 213507950
 Conc: 49.41 ng/ml

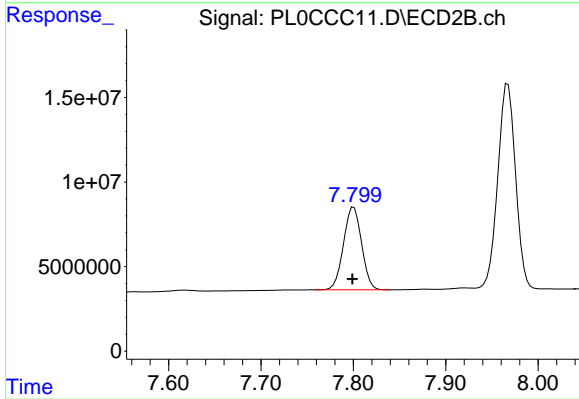
Instrument :
 ECD_L
 ClientSampleId :



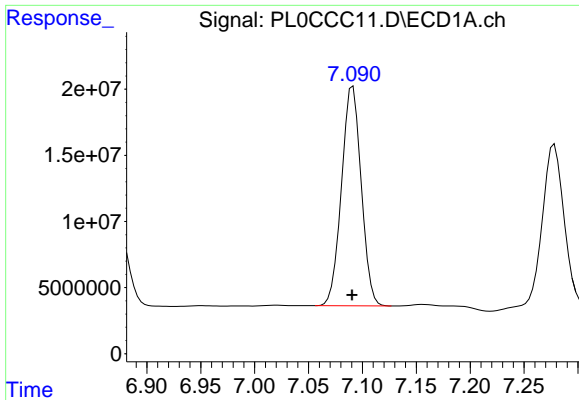
#19 Endosulfan Sulfate
 R.T.: 7.486 min
 Delta R.T.: 0.001 min
 Response: 163742229
 Conc: 47.87 ng/ml



#20 Methoxychlor
 R.T.: 6.874 min
 Delta R.T.: 0.000 min
 Response: 82783948
 Conc: 42.14 ng/ml

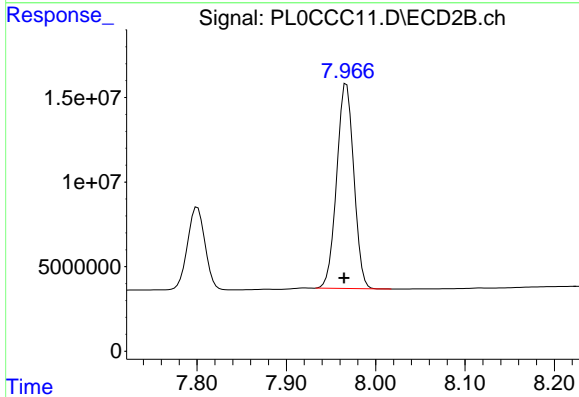


#20 Methoxychlor
 R.T.: 7.801 min
 Delta R.T.: 0.001 min
 Response: 66504948
 Conc: 37.08 ng/ml

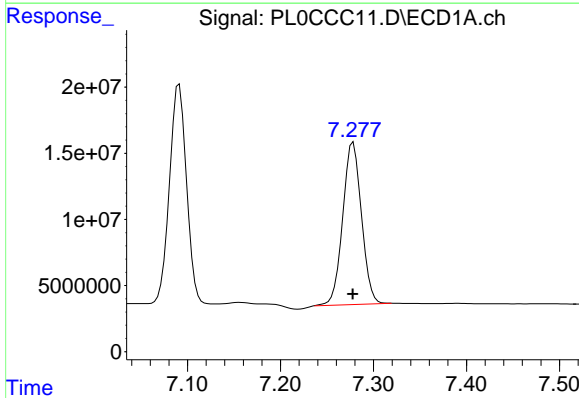


#21 Endrin ketone
 R.T.: 7.091 min
 Delta R.T.: 0.000 min
 Response: 211197572
 Conc: 48.21 ng/ml

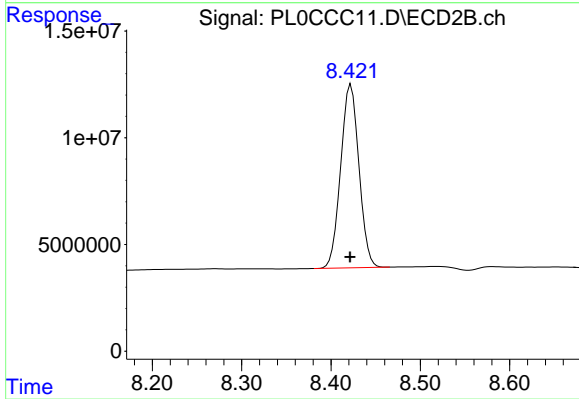
Instrument :
 ECD_L
 ClientSampled :



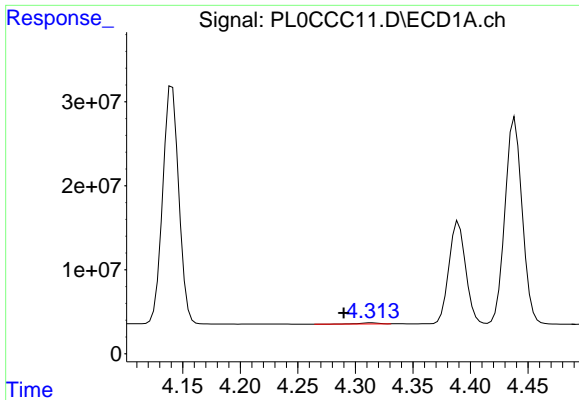
#21 Endrin ketone
 R.T.: 7.967 min
 Delta R.T.: 0.003 min
 Response: 161127366
 Conc: 45.40 ng/ml



#22 Mirex
 R.T.: 7.278 min
 Delta R.T.: 0.000 min
 Response: 171584824
 Conc: 46.71 ng/ml

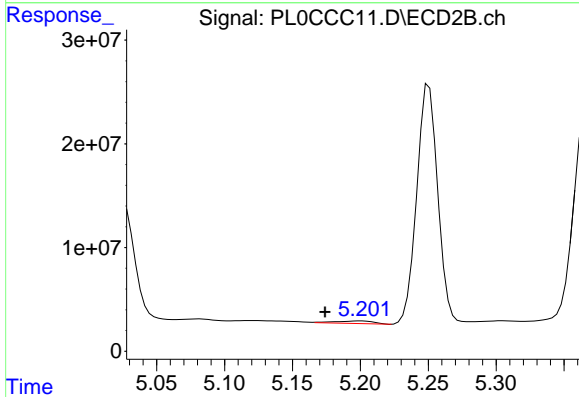


#22 Mirex
 R.T.: 8.422 min
 Delta R.T.: 0.001 min
 Response: 122068606
 Conc: 43.76 ng/ml

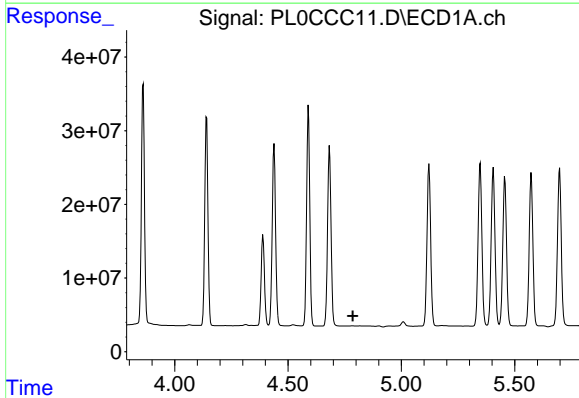


#23 Chlordane-1
 R.T.: 4.314 min
 Delta R.T.: 0.024 min
 Response: 1340082
 Conc: 7.93 ng/ml

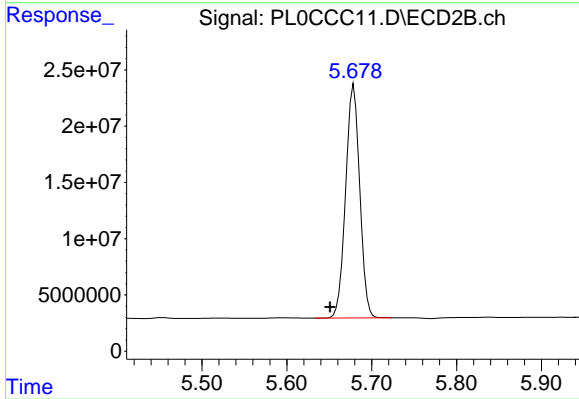
Instrument :
 ECD_L
 ClientSampleId :



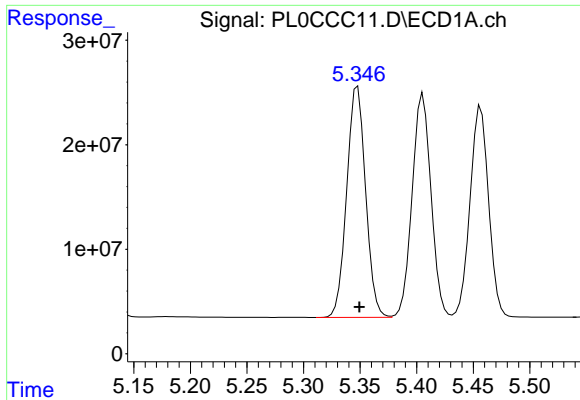
#23 Chlordane-1
 R.T.: 5.201 min
 Delta R.T.: 0.027 min
 Response: 4780640
 Conc: 34.17 ng/ml



#24 Chlordane-2
 R.T.: 0.000 min
 Exp R.T. : 4.786 min
 Response: 0
 Conc: N.D.

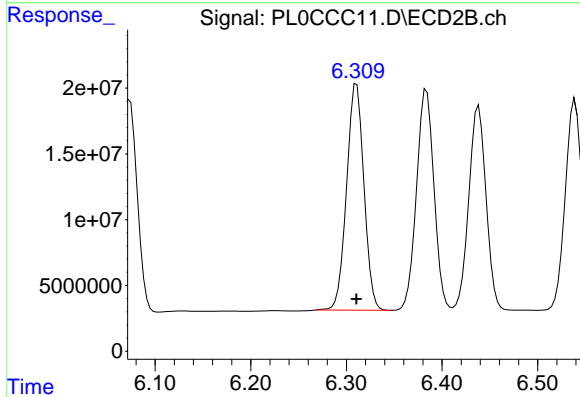


#24 Chlordane-2
 R.T.: 5.679 min
 Delta R.T.: 0.028 min
 Response: 239042854
 Conc: 1471.84 ng/ml

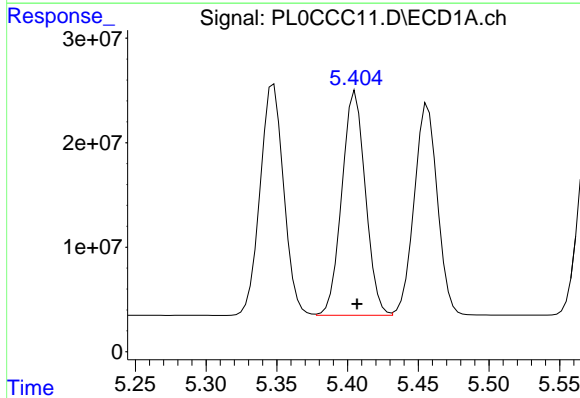


#25 Chlordane-3
 R.T.: 5.348 min
 Delta R.T.: -0.002 min
 Response: 256833516
 Conc: 516.09 ng/ml

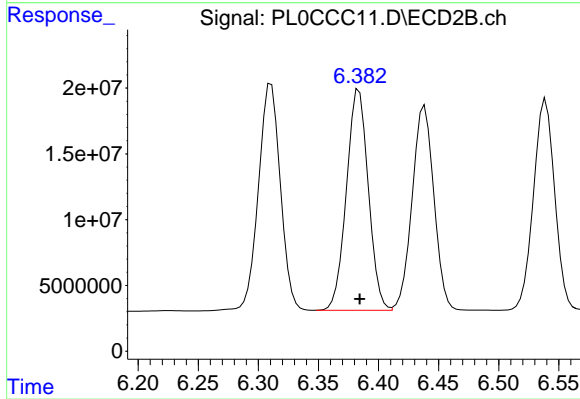
Instrument :
 ECD_L
 ClientSampled :



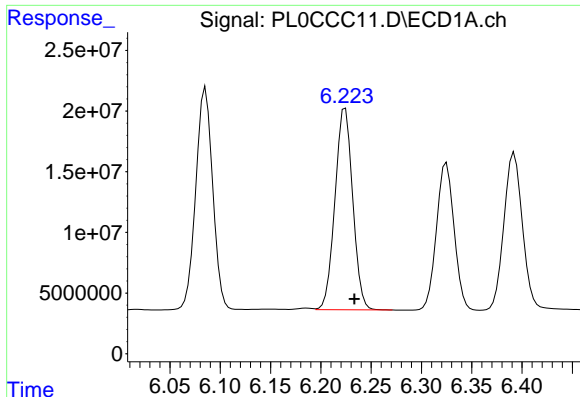
#25 Chlordane-3
 R.T.: 6.311 min
 Delta R.T.: 0.000 min
 Response: 217752083
 Conc: 388.48 ng/ml



#26 Chlordane-4
 R.T.: 5.406 min
 Delta R.T.: -0.001 min
 Response: 248998041
 Conc: 590.03 ng/ml



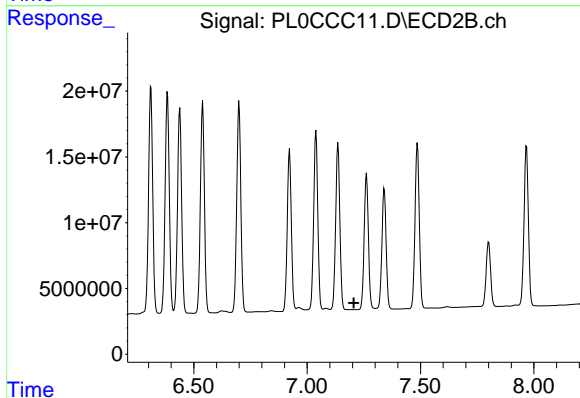
#26 Chlordane-4
 R.T.: 6.384 min
 Delta R.T.: 0.000 min
 Response: 213201359
 Conc: 317.56 ng/ml



#27 Chlordane-5

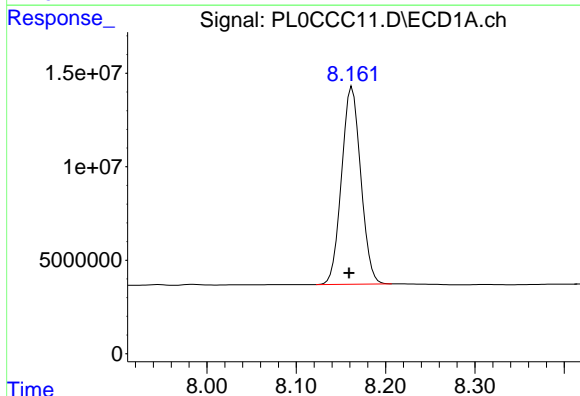
R.T.: 6.224 min
 Delta R.T.: -0.009 min
 Response: 203475957
 Conc: 1208.31 ng/ml

Instrument :
 ECD_L
 ClientSampleId :



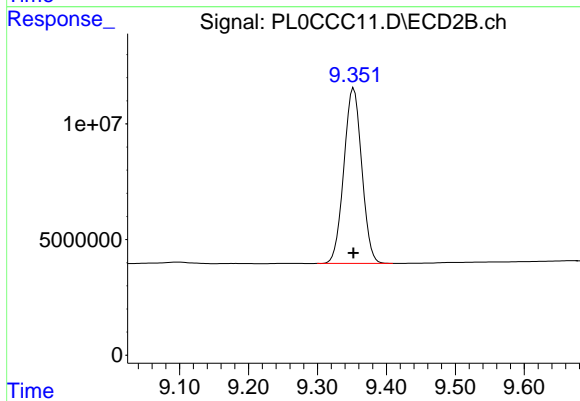
#27 Chlordane-5

R.T.: 0.000 min
 Exp R.T. : 7.206 min
 Response: 0
 Conc: N.D.



#28 Decachlorobiphenyl

R.T.: 8.163 min
 Delta R.T.: 0.004 min
 Response: 157582301
 Conc: 41.10 ng/ml



#28 Decachlorobiphenyl

R.T.: 9.353 min
 Delta R.T.: 0.000 min
 Response: 136843791
 Conc: 44.23 ng/ml