

Data Path : Z:\pestpcbsrv\HPCHEM1\ECD_L\Data\PL050323\
 Data File : PL082455.D
 Signal(s) : Signal #1: ECD1A.ch Signal #2: ECD2B.ch
 Acq On : 03 May 2023 13:07
 Operator : AR\AJ
 Sample : PB152523BL
 Misc :
 ALS Vial : 7 Sample Multiplier: 1

Instrument :
 ECD_L
 ClientSampleId :

Integration File signal 1: autoint1.e
 Integration File signal 2: autoint2.e
 Quant Time: May 03 21:42:38 2023
 Quant Method : Z:\pestpcbsrv\HPCHEM1\ECD_L\methods\PL042023.M
 Quant Title : GC Extractables
 QLast Update : Fri Apr 21 03:12:31 2023
 Response via : Initial Calibration
 Integrator: ChemStation

Volume Inj. : 1 µl
 Signal #1 Phase : ZB-MR2 Signal #2 Phase: ZB-MR1
 Signal #1 Info : 30M x 0.32mm x0.2 Signal #2 Info : 30M x 0.32mm x0.5µm

Compound	RT#1	RT#2	Resp#1	Resp#2	ng/ml	ng/ml

System Monitoring Compounds						
1) SA Tetrachlo...	3.328	2.643	53218660	44515744	19.923	19.215
28) SA Decachlor...	8.752	7.760	42131485	45204286	22.069	19.805
Target Compounds						
2) A alpha-BHC	3.774	3.149	599898	78681	0.151	0.023 #
3) MA gamma-BHC...	0.000	3.486	0	390639	N.D.	0.121 #
4) MA Heptachlor	4.697f	3.781f	289263	33430	0.079	0.010 #
5) MB Aldrin	0.000	4.093	0	111733	N.D.	0.035 #
6) B beta-BHC	0.000	3.781	0	33430	N.D.	0.025 #
7) B delta-BHC	4.553	3.992	2539120	108492	0.706	0.035 #
8) B Heptachlo...	0.000	4.587	0	26640	N.D.	0.009 #
9) A Endosulfan I	5.809	4.961	77234	40857	0.028	0.015 #
10) B gamma-Chl...	5.709	4.828	260879	335214	0.087	0.116 #
11) B alpha-Chl...	5.781	4.895	148418	94566	0.050	0.033 #
13) MA Dieldrin	0.000	5.228	0	30620	N.D.	0.011 #
14) MA Endrin	0.000	5.479	0	11316	N.D.	0.005 #
15) B Endosulfa...	6.536	5.773	80187	57491	0.033	0.026
17) MA 4,4'-DDT	0.000	5.894	0	19296	N.D.	0.009 #
18) B Endrin al...	0.000	5.955	0	3979	N.D.	0.002 #
19) B Endosulfa...	0.000	6.186	0	85522	N.D.	0.036 #
20) A Methoxychlor	0.000	6.472	0	28315	N.D.	0.023 #
21) B Endrin ke...	0.000	6.682	0	18993	N.D.	0.007 #
23) Chlordane-1	0.000	3.642	0	325710	N.D.	3.673 #
25) Chlordane-3	5.709	4.828	260879	335214	0.604	1.180 #
26) Chlordane-4	5.781	4.895	148418	94566	0.285	0.317
27) Chlordane-5	0.000	5.773	0	57491	N.D.	0.582 #

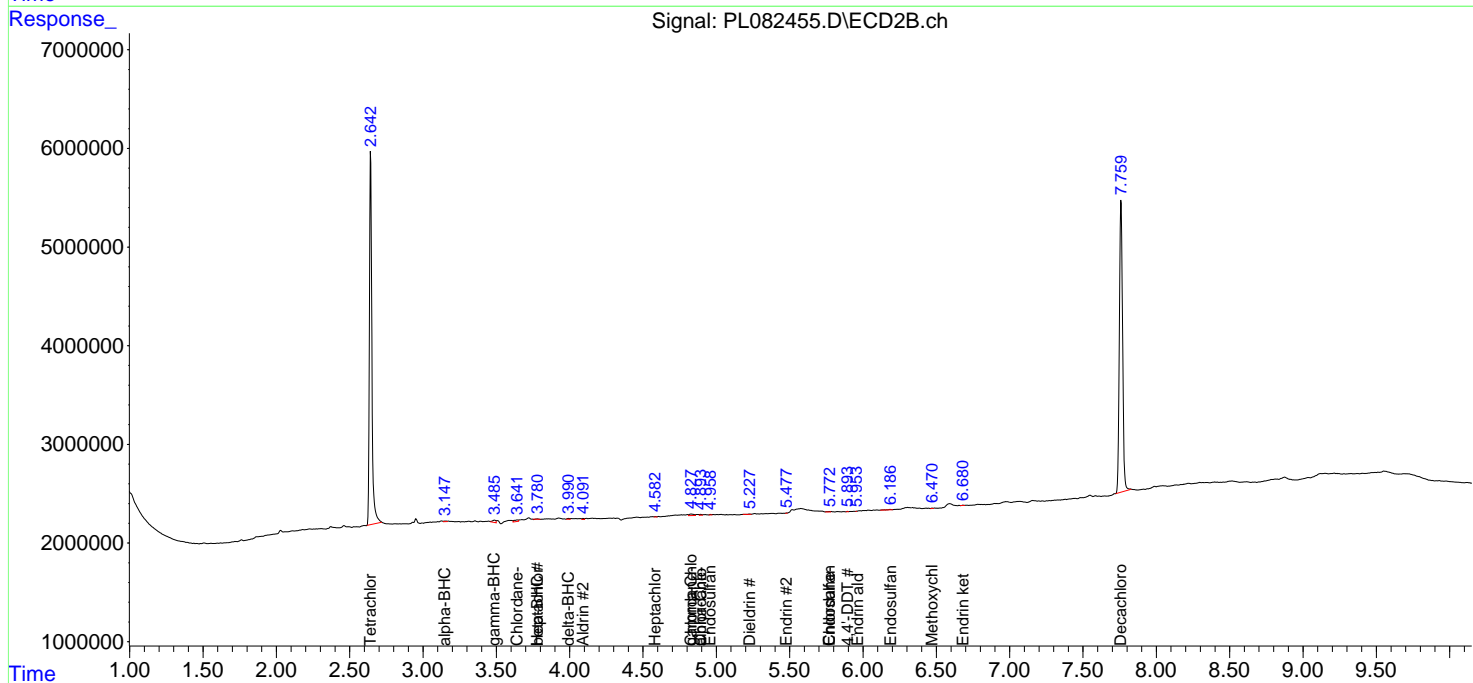
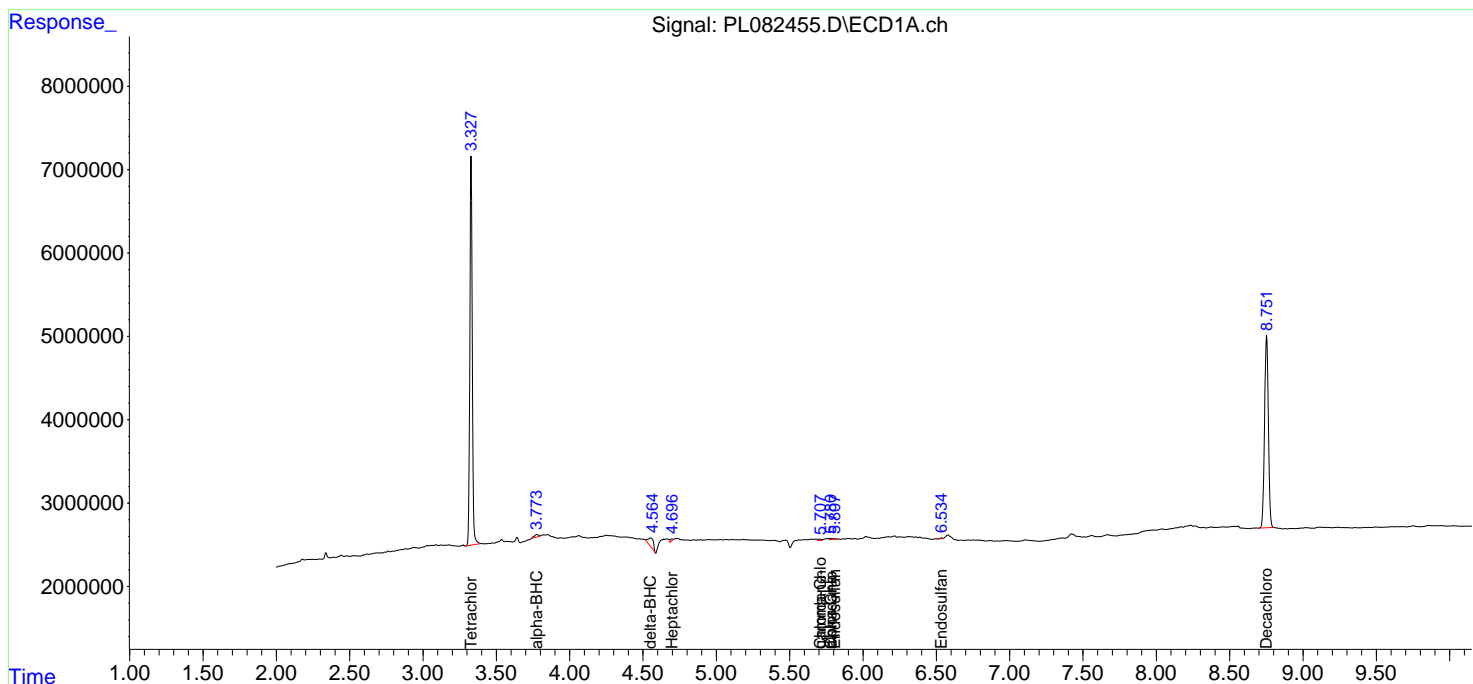
(f)=RT Delta > 1/2 Window (#)=Amounts differ by > 25% (m)=manual int.

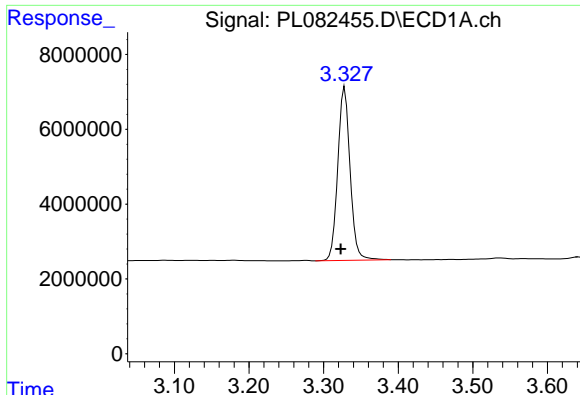
Data Path : Z:\pestpcbsrv\HPCHEM1\ECD_L\Data\PL050323\
 Data File : PL082455.D
 Signal(s) : Signal #1: ECD1A.ch Signal #2: ECD2B.ch
 Acq On : 03 May 2023 13:07
 Operator : AR\AJ
 Sample : PB152523BL
 Misc :
 ALS Vial : 7 Sample Multiplier: 1

Instrument :
 ECD_L
 ClientSampleId :

Integration File signal 1: autoint1.e
 Integration File signal 2: autoint2.e
 Quant Time: May 03 21:42:38 2023
 Quant Method : Z:\pestpcbsrv\HPCHEM1\ECD_L\methods\PL042023.M
 Quant Title : GC Extractables
 QLast Update : Fri Apr 21 03:12:31 2023
 Response via : Initial Calibration
 Integrator: ChemStation

Volume Inj. : 1 µl
 Signal #1 Phase : ZB-MR2 Signal #2 Phase: ZB-MR1
 Signal #1 Info : 30M x 0.32mm x0.2 Signal #2 Info : 30M x 0.32mm x0.5µm

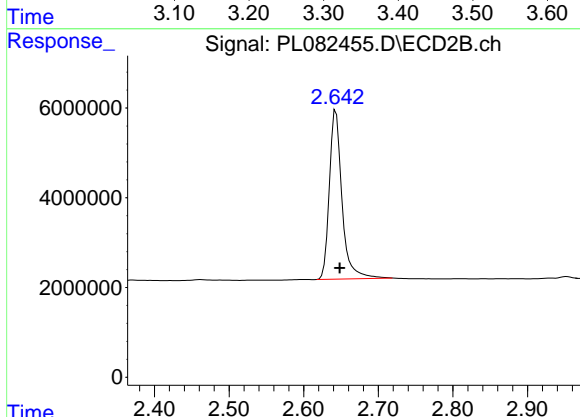




#1 Tetrachloro-m-xylene

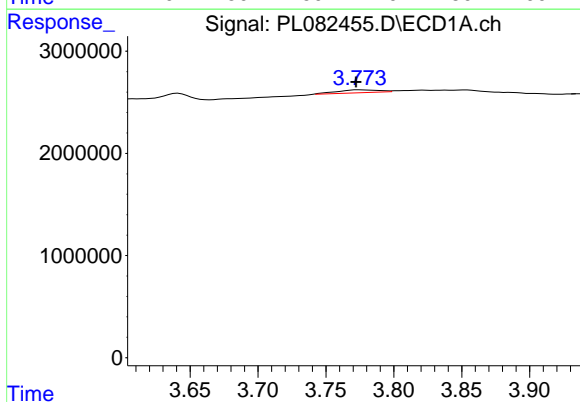
R.T.: 3.328 min
 Delta R.T.: 0.005 min
 Response: 53218660
 Conc: 19.92 ng/ml

Instrument :
 ECD_L
 ClientSampleId :



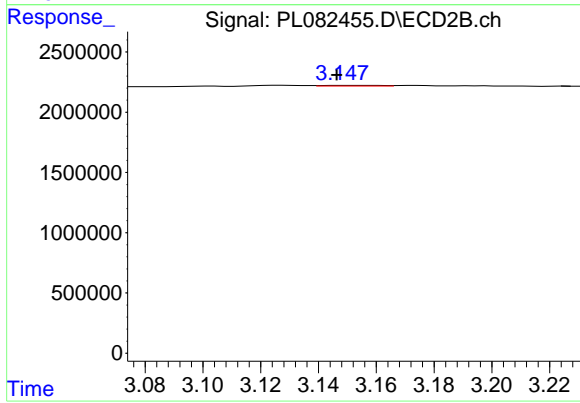
#1 Tetrachloro-m-xylene

R.T.: 2.643 min
 Delta R.T.: -0.005 min
 Response: 44515744
 Conc: 19.21 ng/ml



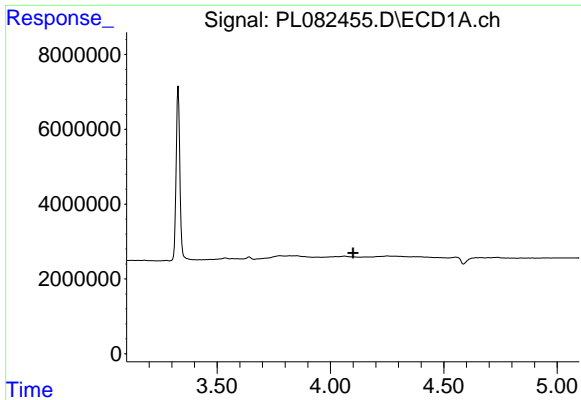
#2 alpha-BHC

R.T.: 3.774 min
 Delta R.T.: 0.002 min
 Response: 599898
 Conc: 0.15 ng/ml



#2 alpha-BHC

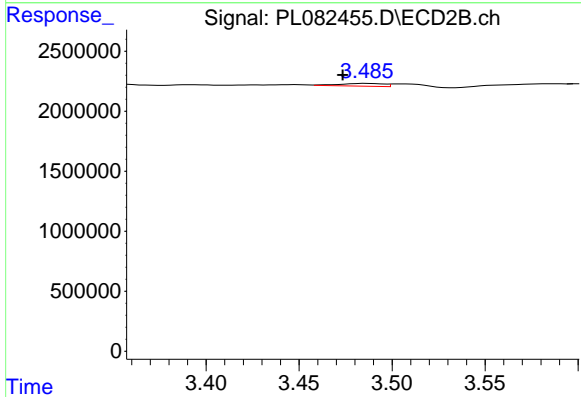
R.T.: 3.149 min
 Delta R.T.: 0.003 min
 Response: 78681
 Conc: 0.02 ng/ml



#3 gamma-BHC (Lindane)

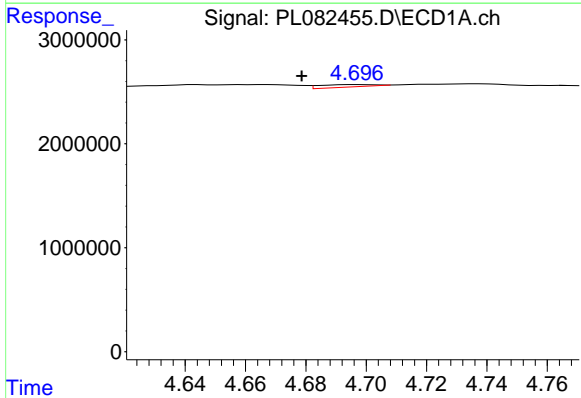
R.T.: 0.000 min
 Exp R.T.: 4.100 min
 Response: 0
 Conc: N.D.

Instrument :
 ECD_L
 ClientSampleId :



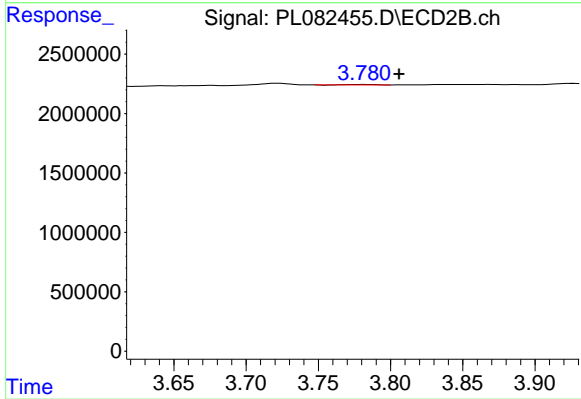
#3 gamma-BHC (Lindane)

R.T.: 3.486 min
 Delta R.T.: 0.013 min
 Response: 390639
 Conc: 0.12 ng/ml



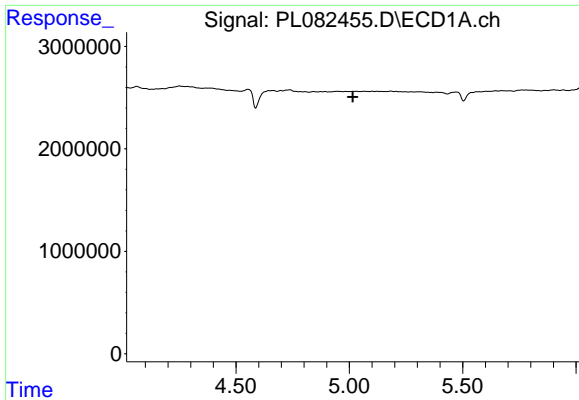
#4 Heptachlor

R.T.: 4.697 min
 Delta R.T.: 0.019 min
 Response: 289263
 Conc: 0.08 ng/ml



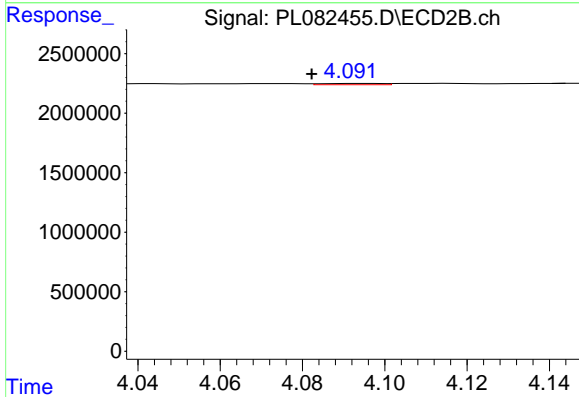
#4 Heptachlor

R.T.: 3.781 min
 Delta R.T.: -0.025 min
 Response: 33430
 Conc: 0.01 ng/ml

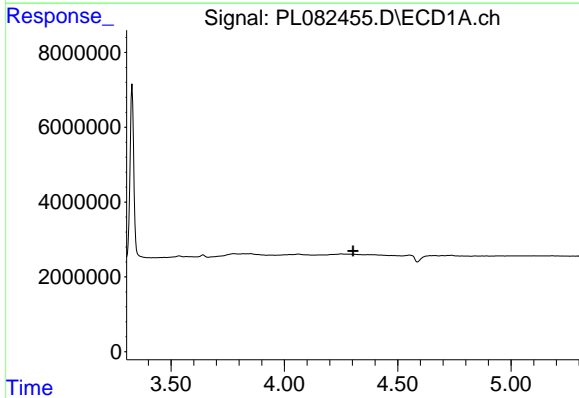


#5 Aldrin
 R.T.: 0.000 min
 Exp R.T.: 5.016 min
 Response: 0
 Conc: N.D.

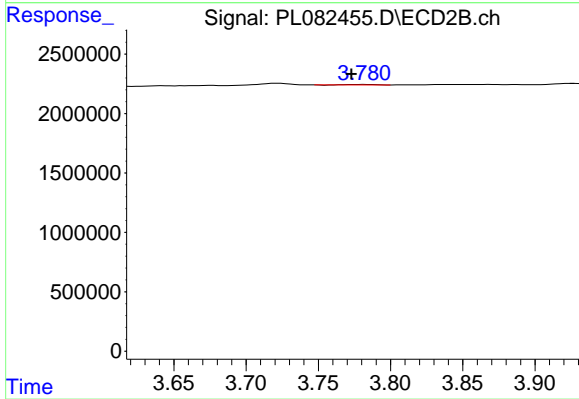
Instrument :
 ECD_L
 ClientSampleId :



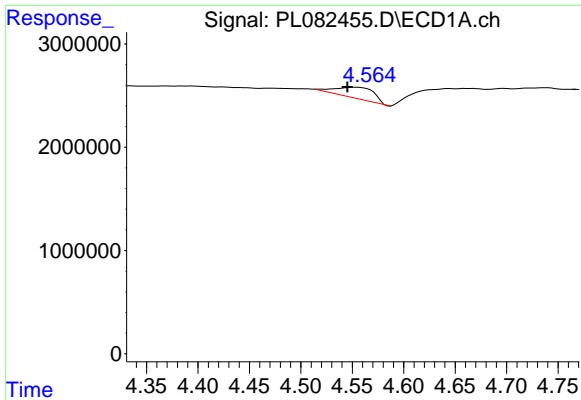
#5 Aldrin
 R.T.: 4.093 min
 Delta R.T.: 0.010 min
 Response: 111733
 Conc: 0.04 ng/ml



#6 beta-BHC
 R.T.: 0.000 min
 Exp R.T.: 4.304 min
 Response: 0
 Conc: N.D.



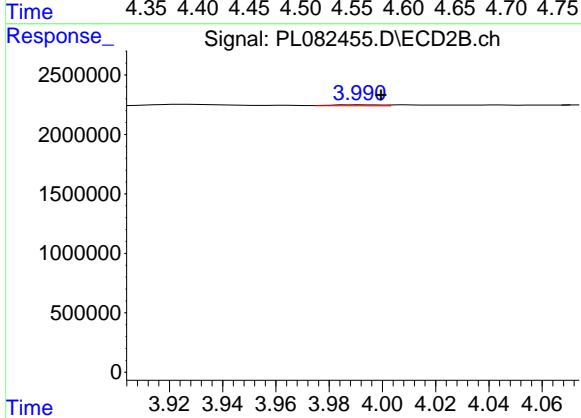
#6 beta-BHC
 R.T.: 3.781 min
 Delta R.T.: 0.008 min
 Response: 33430
 Conc: 0.02 ng/ml



#7 delta-BHC

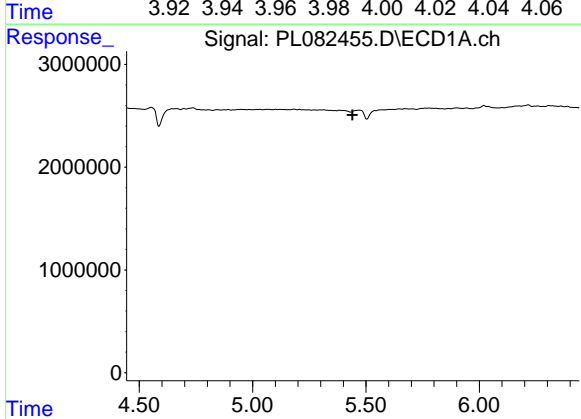
R.T.: 4.553 min
 Delta R.T.: 0.008 min
 Response: 2539120
 Conc: 0.71 ng/ml

Instrument :
 ECD_L
 ClientSampleId :



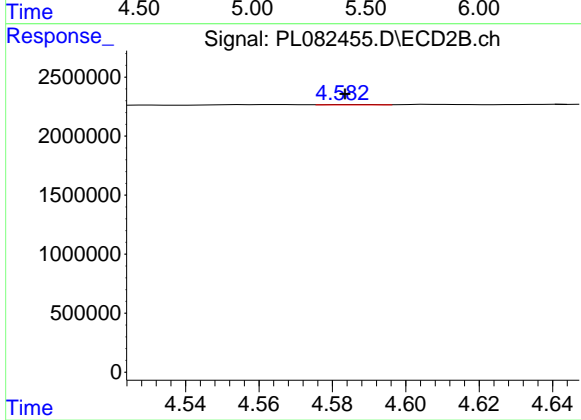
#7 delta-BHC

R.T.: 3.992 min
 Delta R.T.: -0.008 min
 Response: 108492
 Conc: 0.04 ng/ml



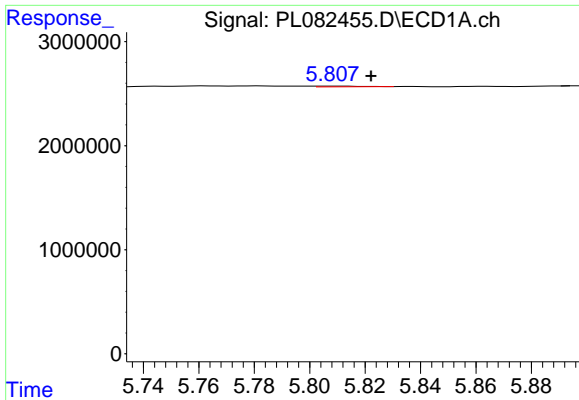
#8 Heptachlor epoxide

R.T.: 0.000 min
 Exp R.T. : 5.441 min
 Response: 0
 Conc: N.D.



#8 Heptachlor epoxide

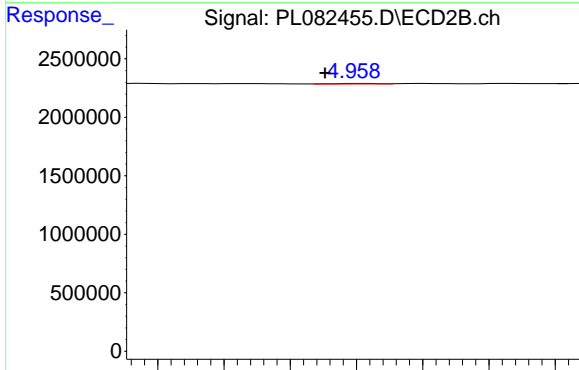
R.T.: 4.587 min
 Delta R.T.: 0.003 min
 Response: 26640
 Conc: 0.01 ng/ml



#9 Endosulfan I

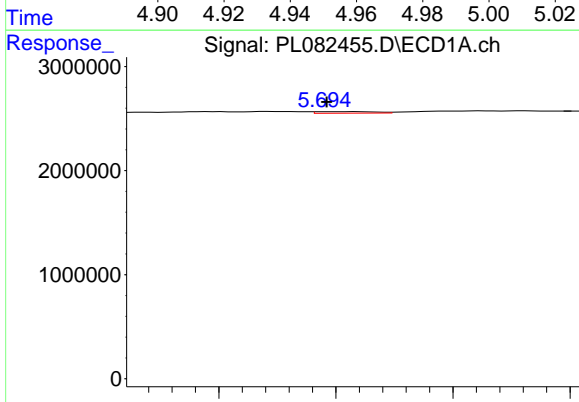
R.T.: 5.809 min
 Delta R.T.: -0.014 min
 Response: 77234
 Conc: 0.03 ng/ml

Instrument :
 ECD_L
 ClientSampleId :



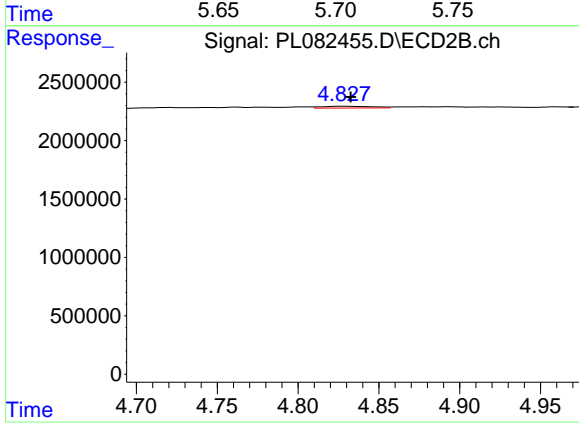
#9 Endosulfan I

R.T.: 4.961 min
 Delta R.T.: 0.010 min
 Response: 40857
 Conc: 0.02 ng/ml



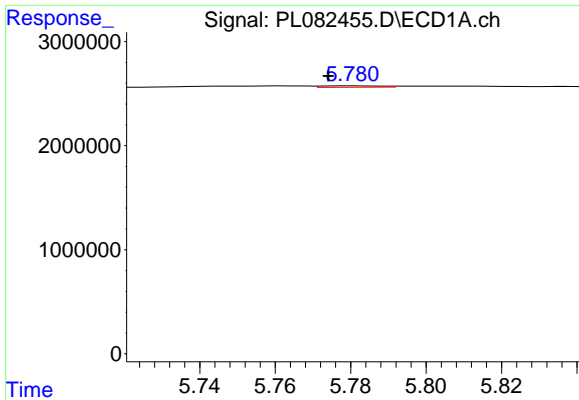
#10 gamma-Chlordane

R.T.: 5.709 min
 Delta R.T.: 0.013 min
 Response: 260879
 Conc: 0.09 ng/ml



#10 gamma-Chlordane

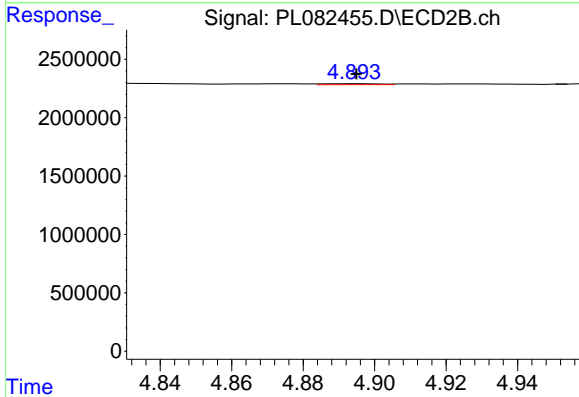
R.T.: 4.828 min
 Delta R.T.: -0.004 min
 Response: 335214
 Conc: 0.12 ng/ml



#11 alpha-Chlordane

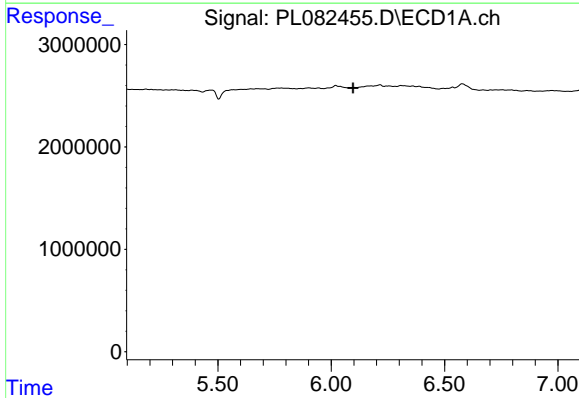
R.T.: 5.781 min
 Delta R.T.: 0.007 min
 Response: 148418
 Conc: 0.05 ng/ml

Instrument :
 ECD_L
 ClientSampleId :



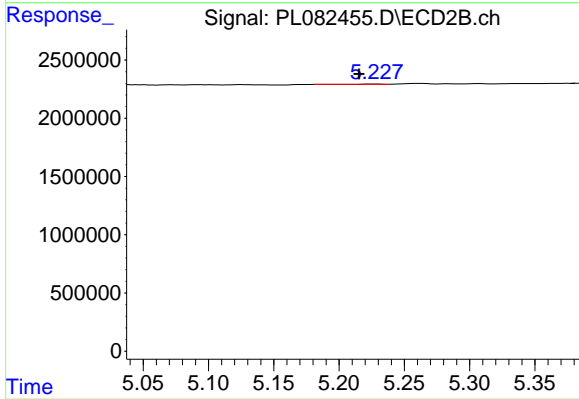
#11 alpha-Chlordane

R.T.: 4.895 min
 Delta R.T.: 0.000 min
 Response: 94566
 Conc: 0.03 ng/ml



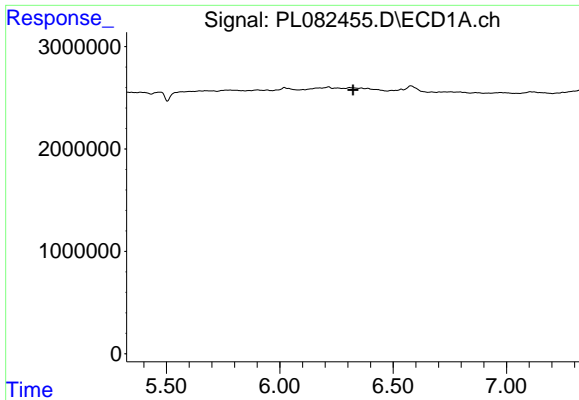
#13 Dieldrin

R.T.: 0.000 min
 Exp R.T. : 6.097 min
 Response: 0
 Conc: N.D.



#13 Dieldrin

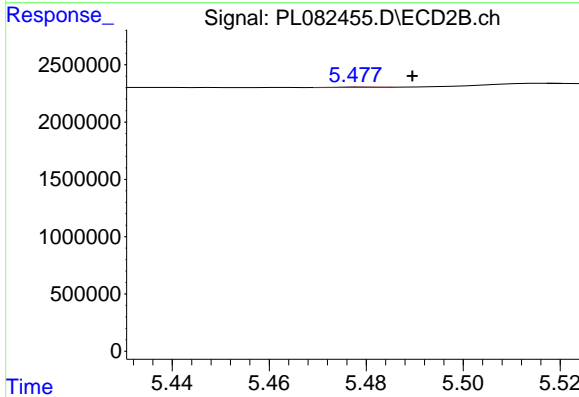
R.T.: 5.228 min
 Delta R.T.: 0.013 min
 Response: 30620
 Conc: 0.01 ng/ml



#14 Endrin

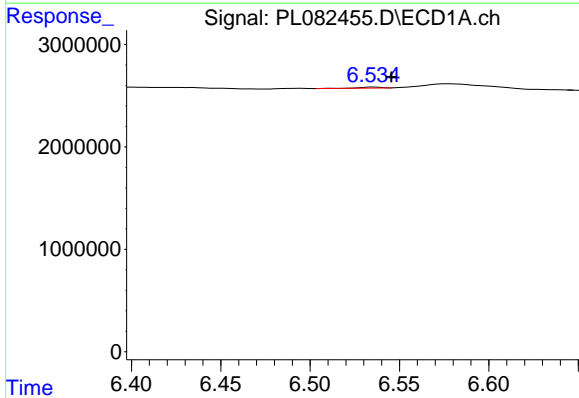
R.T.: 0.000 min
 Exp R.T.: 6.324 min
 Response: 0
 Conc: N.D.

Instrument :
 ECD_L
 ClientSampleId :



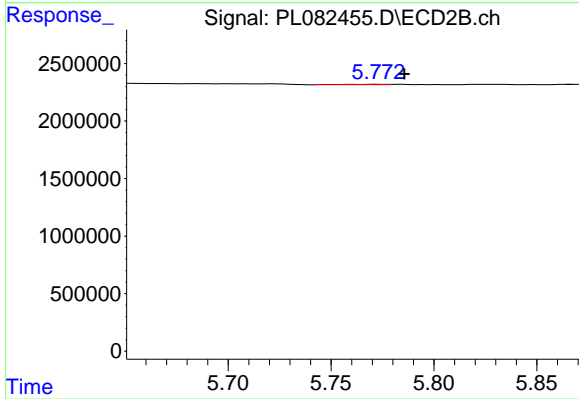
#14 Endrin

R.T.: 5.479 min
 Delta R.T.: -0.010 min
 Response: 11316
 Conc: 0.00 ng/ml



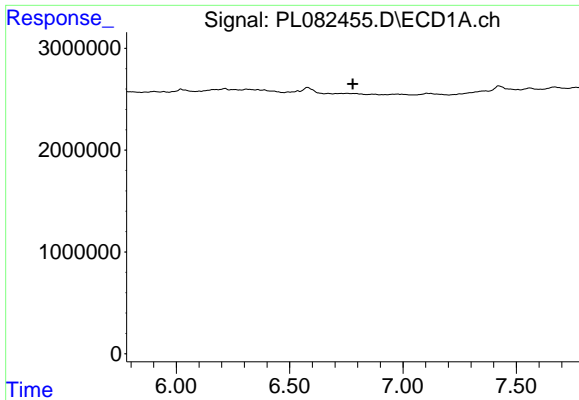
#15 Endosulfan II

R.T.: 6.536 min
 Delta R.T.: -0.010 min
 Response: 80187
 Conc: 0.03 ng/ml



#15 Endosulfan II

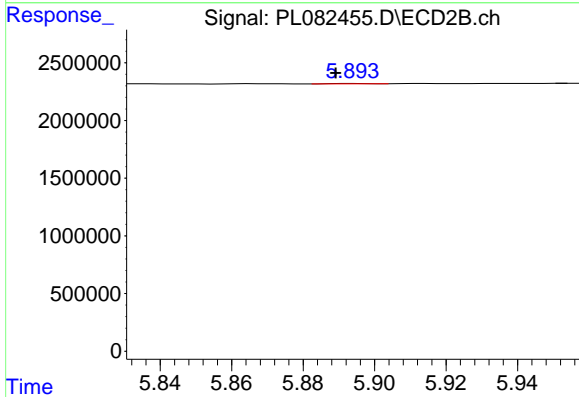
R.T.: 5.773 min
 Delta R.T.: -0.013 min
 Response: 57491
 Conc: 0.03 ng/ml



#17 4,4'-DDT

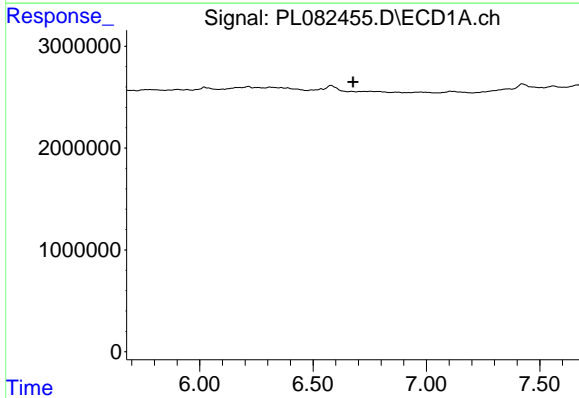
R.T.: 0.000 min
 Exp R.T.: 6.779 min
 Response: 0
 Conc: N.D.

Instrument :
 ECD_L
 ClientSampleId :



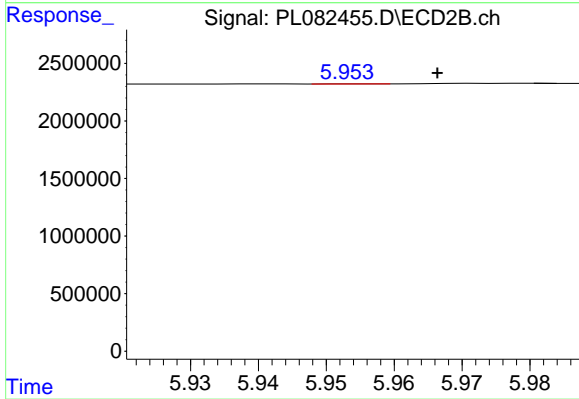
#17 4,4'-DDT

R.T.: 5.894 min
 Delta R.T.: 0.005 min
 Response: 19296
 Conc: 0.01 ng/ml



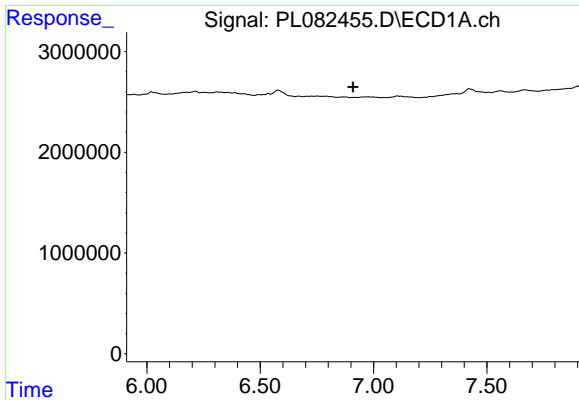
#18 Endrin aldehyde

R.T.: 0.000 min
 Exp R.T.: 6.676 min
 Response: 0
 Conc: N.D.



#18 Endrin aldehyde

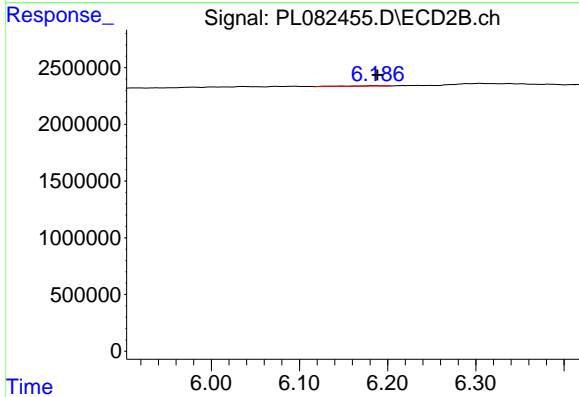
R.T.: 5.955 min
 Delta R.T.: -0.012 min
 Response: 3979
 Conc: 0.00 ng/ml



#19 Endosulfan Sulfate

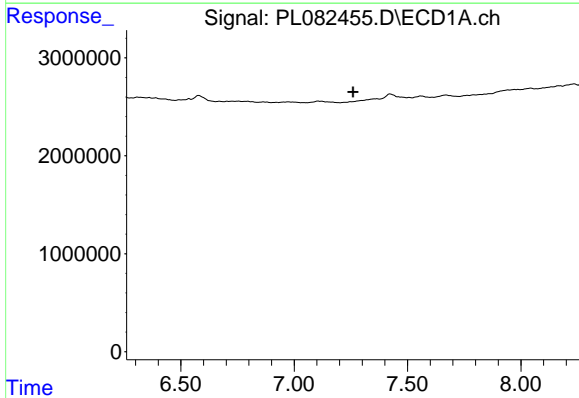
R.T.: 0.000 min
 Exp R.T. : 6.910 min
 Response: 0
 Conc: N.D.

Instrument :
 ECD_L
 ClientSampleId :



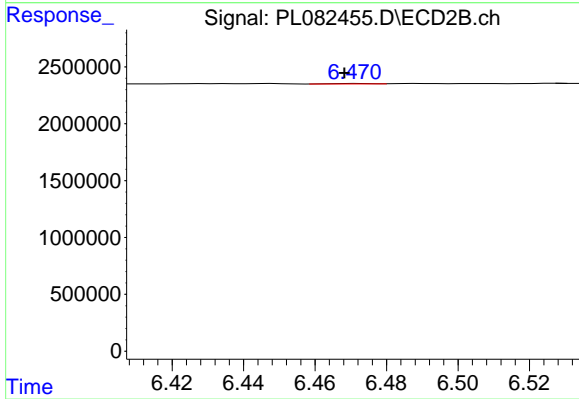
#19 Endosulfan Sulfate

R.T.: 6.186 min
 Delta R.T.: -0.003 min
 Response: 85522
 Conc: 0.04 ng/ml



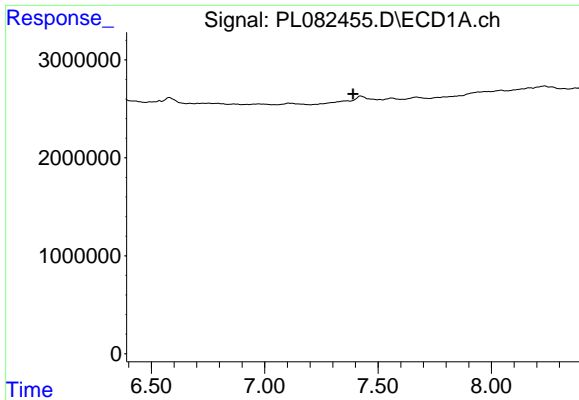
#20 Methoxychlor

R.T.: 0.000 min
 Exp R.T. : 7.260 min
 Response: 0
 Conc: N.D.



#20 Methoxychlor

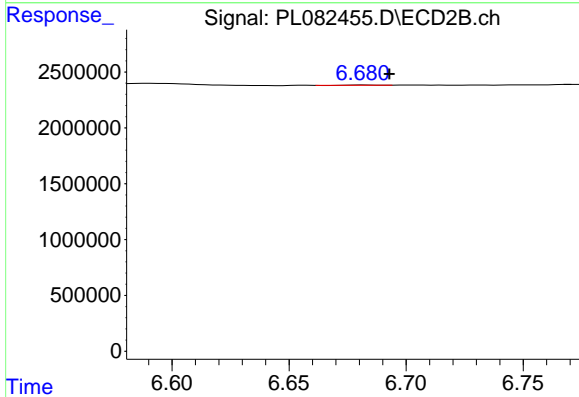
R.T.: 6.472 min
 Delta R.T.: 0.004 min
 Response: 28315
 Conc: 0.02 ng/ml



#21 Endrin ketone

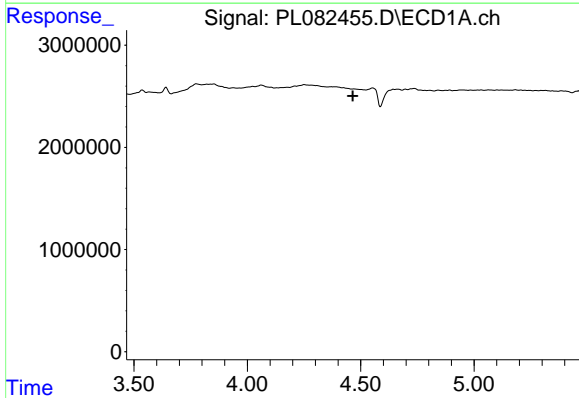
R.T.: 0.000 min
 Exp R.T.: 7.390 min
 Response: 0
 Conc: N.D.

Instrument :
 ECD_L
 ClientSampleId :



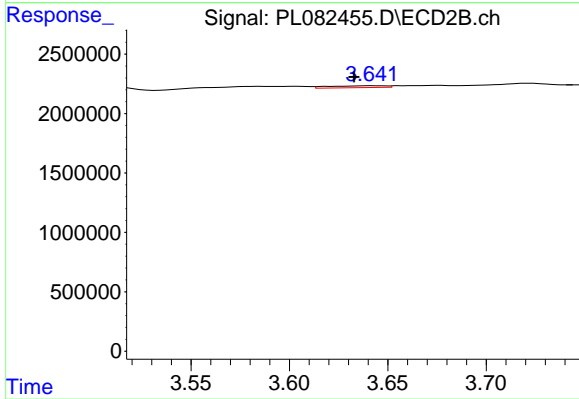
#21 Endrin ketone

R.T.: 6.682 min
 Delta R.T.: -0.011 min
 Response: 18993
 Conc: 0.01 ng/ml



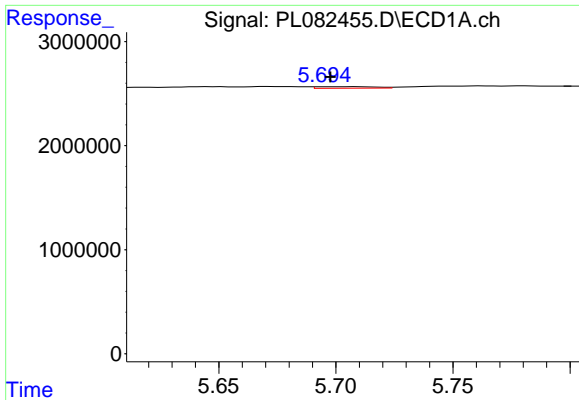
#23 Chlordane-1

R.T.: 0.000 min
 Exp R.T.: 4.466 min
 Response: 0
 Conc: N.D.



#23 Chlordane-1

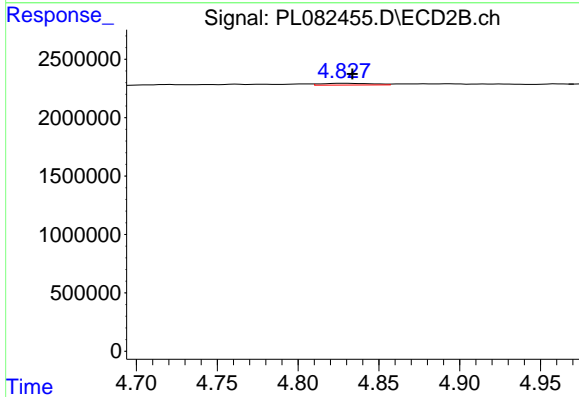
R.T.: 3.642 min
 Delta R.T.: 0.009 min
 Response: 325710
 Conc: 3.67 ng/ml



#25 Chlordane-3

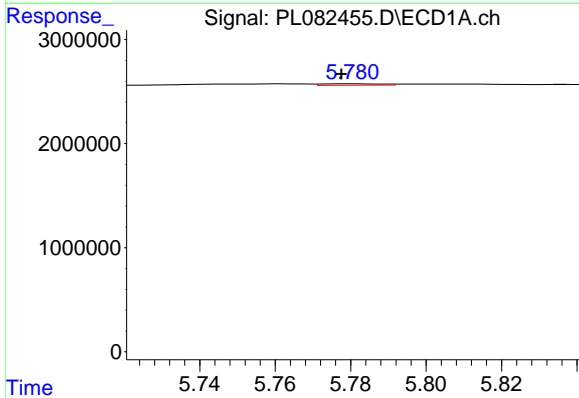
R.T.: 5.709 min
 Delta R.T.: 0.011 min
 Response: 260879
 Conc: 0.60 ng/ml

Instrument :
 ECD_L
 ClientSampleId :



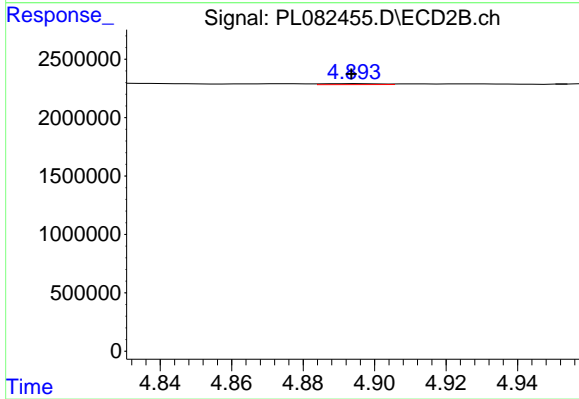
#25 Chlordane-3

R.T.: 4.828 min
 Delta R.T.: -0.006 min
 Response: 335214
 Conc: 1.18 ng/ml



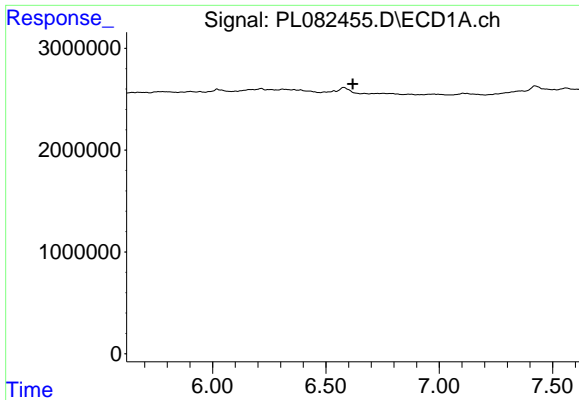
#26 Chlordane-4

R.T.: 5.781 min
 Delta R.T.: 0.003 min
 Response: 148418
 Conc: 0.29 ng/ml



#26 Chlordane-4

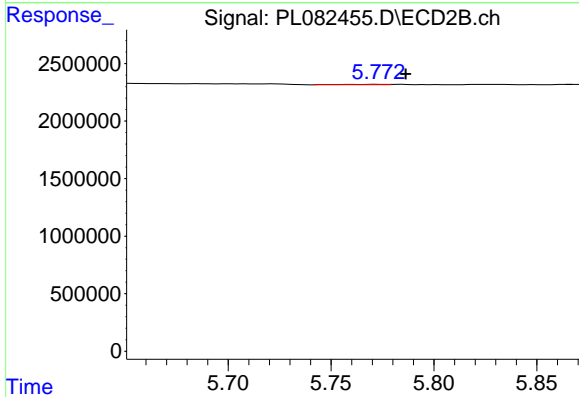
R.T.: 4.895 min
 Delta R.T.: 0.001 min
 Response: 94566
 Conc: 0.32 ng/ml



#27 Chlordane-5

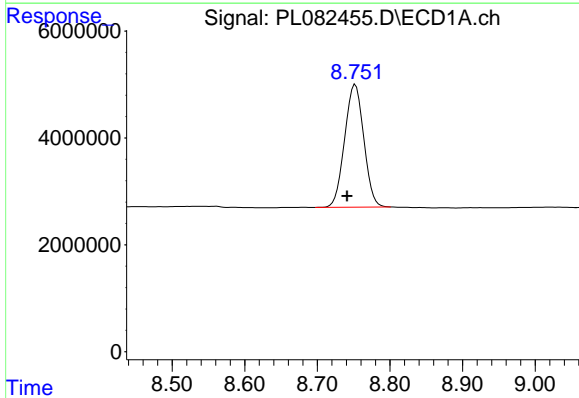
R.T.: 0.000 min
 Exp R.T.: 6.619 min
 Response: 0
 Conc: N.D.

Instrument :
 ECD_L
 ClientSampleId :



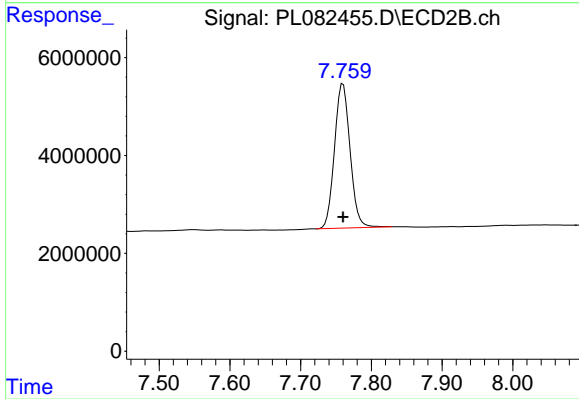
#27 Chlordane-5

R.T.: 5.773 min
 Delta R.T.: -0.013 min
 Response: 57491
 Conc: 0.58 ng/ml



#28 Decachlorobiphenyl

R.T.: 8.752 min
 Delta R.T.: 0.011 min
 Response: 42131485
 Conc: 22.07 ng/ml



#28 Decachlorobiphenyl

R.T.: 7.760 min
 Delta R.T.: 0.000 min
 Response: 45204286
 Conc: 19.80 ng/ml