

Data Path : Z:\pestpcbsrv\HPCHEM1\ECD_L\Data\PL050323\
 Data File : PL082461.D
 Signal(s) : Signal #1: ECD1A.ch Signal #2: ECD2B.ch
 Acq On : 03 May 2023 15:36
 Operator : AR\AJ
 Sample : 02500-23DL2X
 Misc :
 ALS Vial : 13 Sample Multiplier: 1

Instrument :
 ECD_L
 ClientSampleId :

Integration File signal 1: autoint1.e
 Integration File signal 2: autoint2.e
 Quant Time: May 04 04:42:44 2023
 Quant Method : Z:\pestpcbsrv\HPCHEM1\ECD_L\methods\LTX042023.M
 Quant Title : GC Extractables
 QLast Update : Fri Apr 21 04:31:42 2023
 Response via : Initial Calibration
 Integrator: ChemStation

Volume Inj. : 2 µl
 Signal #1 Phase : Rtx-CLPesticide 1 Signal #2 Phase: Rtx-CLPesticide 1
 Signal #1 Info : 30M x 0.32mm x0.3 Signal #2 Info : 30M x 0.32mm x 0.25µm

Compound	RT#1	RT#2	Resp#1	Resp#2	ng/ml	ng/ml

System Monitoring Compounds						
1) SA Tetrachlo...	3.331	2.647	24148055	21169530	10.327	10.510
7) SA Decachlor...	8.755	7.762	19818908	21917755	11.382	10.902
Target Compounds						
2) Toxaphene-1	6.008	5.180	8877577	5587953	487.578	455.760
3) Toxaphene-2	6.820	5.536	47084633	1785702	696.252	145.126 #
4) Toxaphene-3	6.904	5.820	28291718	25903291	588.539	1700.121 #
5) Toxaphene-4	7.001	6.445	12141376	20641825	410.039	451.603
6) Toxaphene-5	7.328	6.580	13605714	36144767	388.978	558.251 #

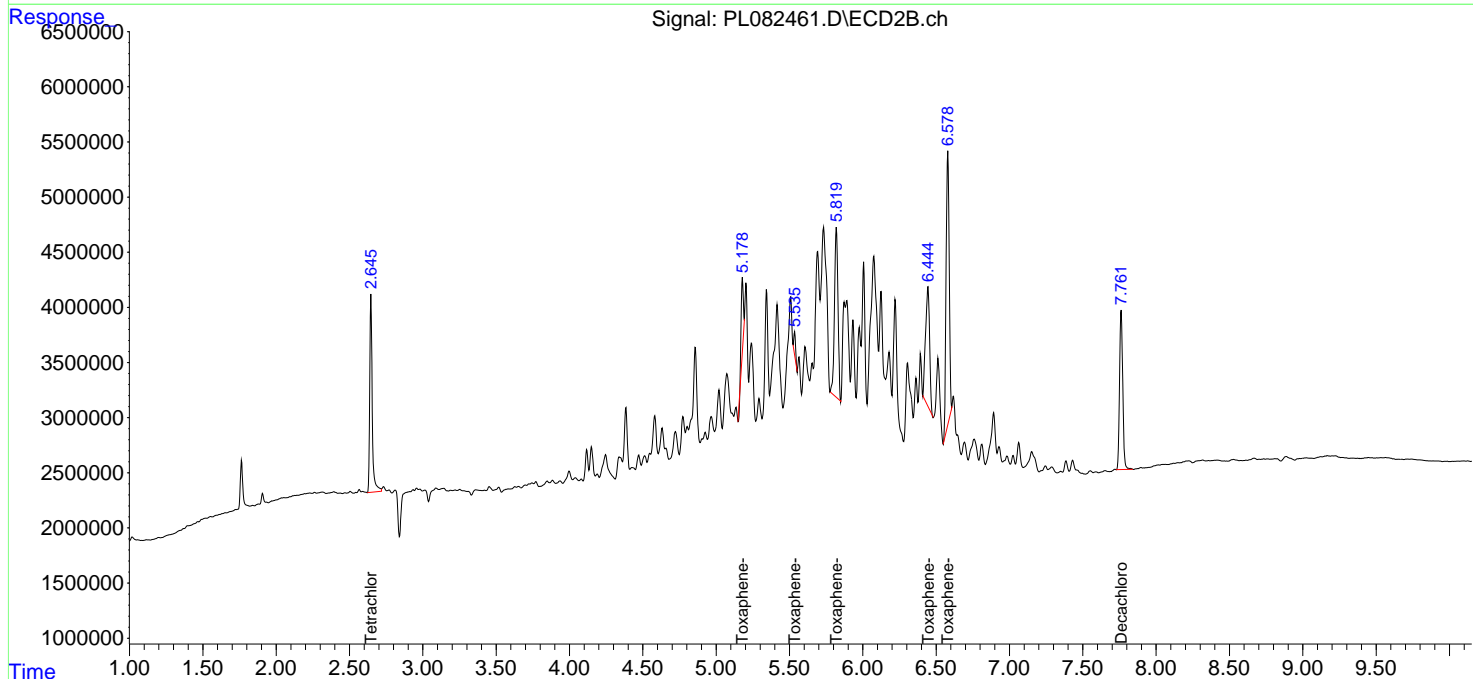
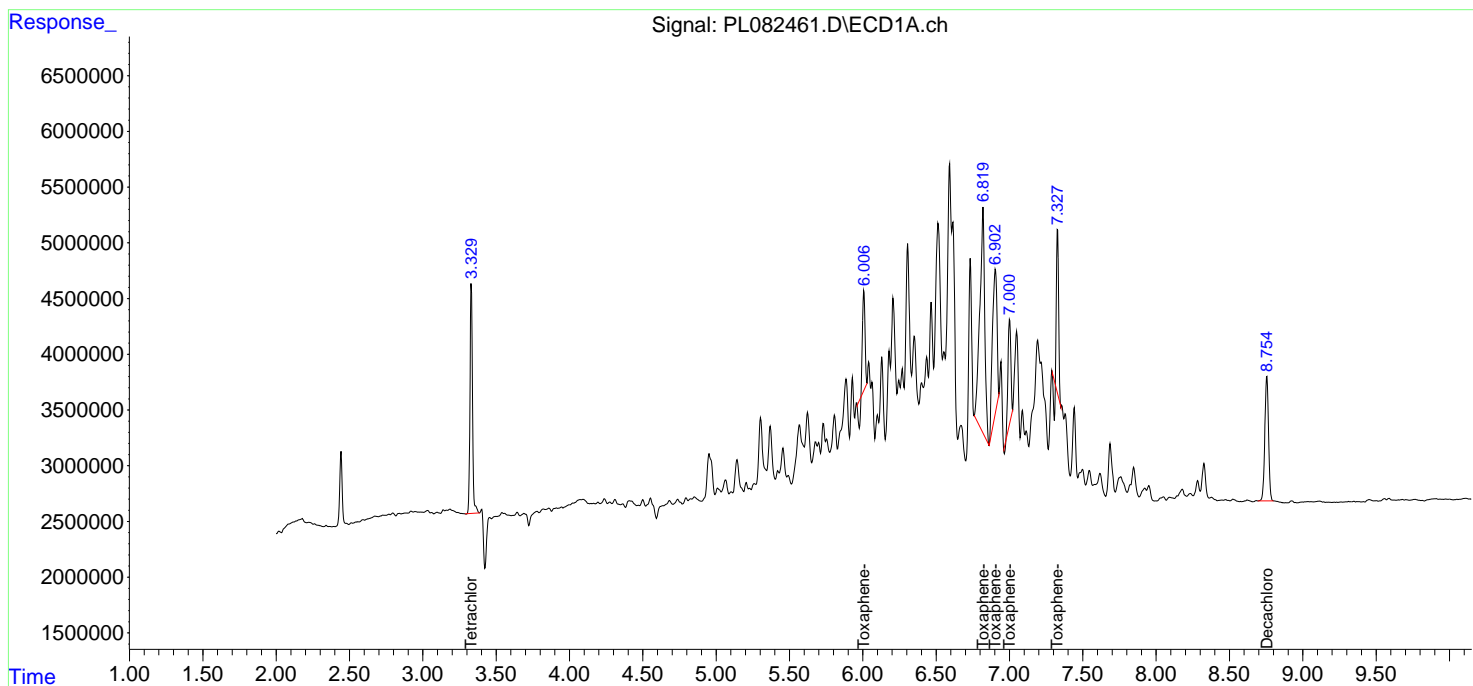
(f)=RT Delta > 1/2 Window (#)=Amounts differ by > 25% (m)=manual int.

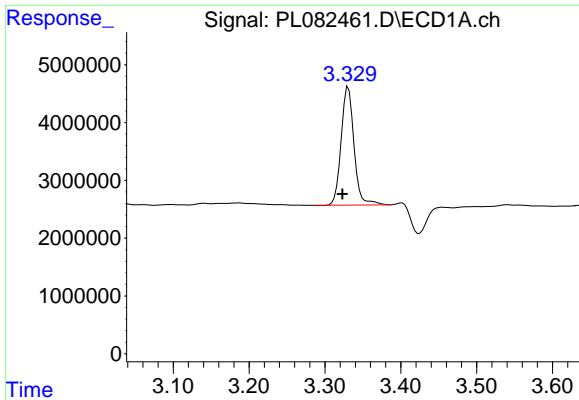
Data Path : Z:\pestpcbsrv\HPCHEM1\ECD_L\Data\PL050323\
 Data File : PL082461.D
 Signal(s) : Signal #1: ECD1A.ch Signal #2: ECD2B.ch
 Acq On : 03 May 2023 15:36
 Operator : AR\AJ
 Sample : 02500-23DL2X
 Misc :
 ALS Vial : 13 Sample Multiplier: 1

Instrument :
 ECD_L
 ClientSampleId :

Integration File signal 1: autoint1.e
 Integration File signal 2: autoint2.e
 Quant Time: May 04 04:42:44 2023
 Quant Method : Z:\pestpcbsrv\HPCHEM1\ECD_L\methods\LTX042023.M
 Quant Title : GC Extractables
 QLast Update : Fri Apr 21 04:31:42 2023
 Response via : Initial Calibration
 Integrator: ChemStation

Volume Inj. : 2 µl
 Signal #1 Phase : Rtx-CLPesticide 1 Signal #2 Phase: Rtx-CLPesticide 1
 Signal #1 Info : 30M x 0.32mm x0.3 Signal #2 Info : 30M x 0.32mm x 0.25µm

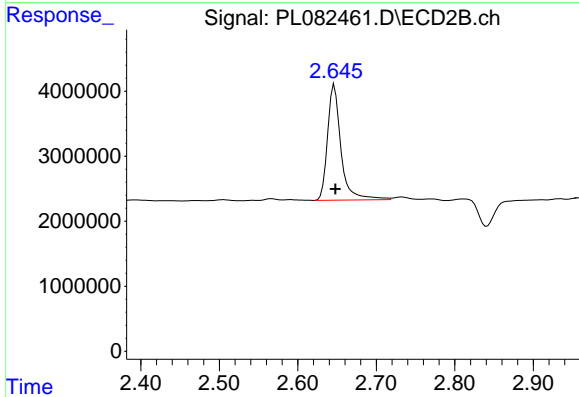




#1 Tetrachloro-m-xylene

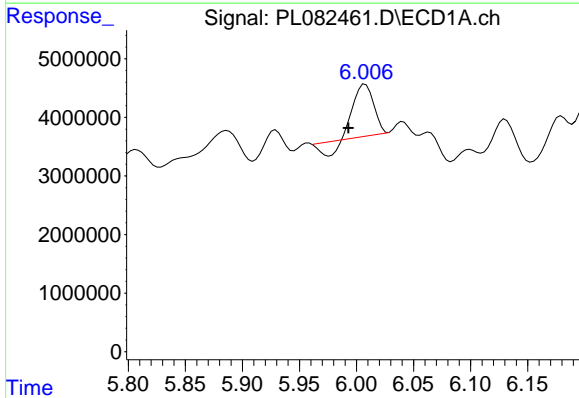
R.T.: 3.331 min
 Delta R.T.: 0.008 min
 Response: 24148055
 Conc: 10.33 ng/ml

Instrument :
 ECD_L
 ClientSampleId :



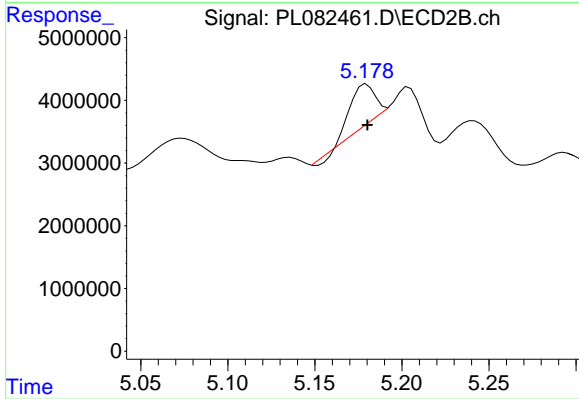
#1 Tetrachloro-m-xylene

R.T.: 2.647 min
 Delta R.T.: -0.001 min
 Response: 21169530
 Conc: 10.51 ng/ml



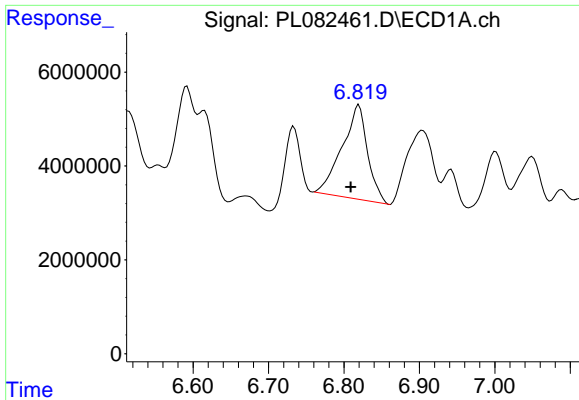
#2 Toxaphene-1

R.T.: 6.008 min
 Delta R.T.: 0.015 min
 Response: 8877577
 Conc: 487.58 ng/ml



#2 Toxaphene-1

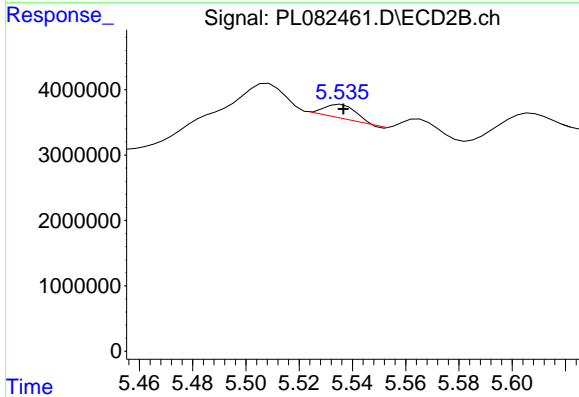
R.T.: 5.180 min
 Delta R.T.: 0.000 min
 Response: 5587953
 Conc: 455.76 ng/ml



#3 Toxaphene-2

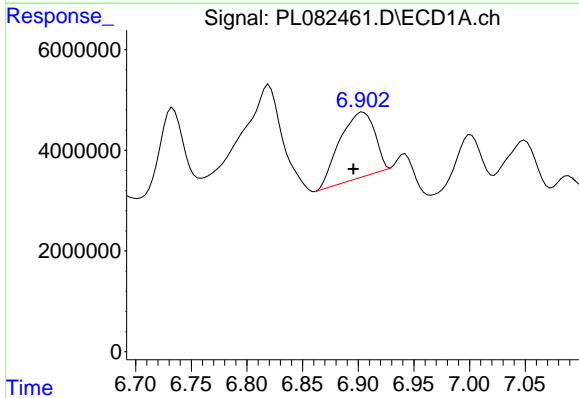
R.T.: 6.820 min
 Delta R.T.: 0.011 min
 Response: 47084633
 Conc: 696.25 ng/ml

Instrument :
 ECD_L
 ClientSampleId :



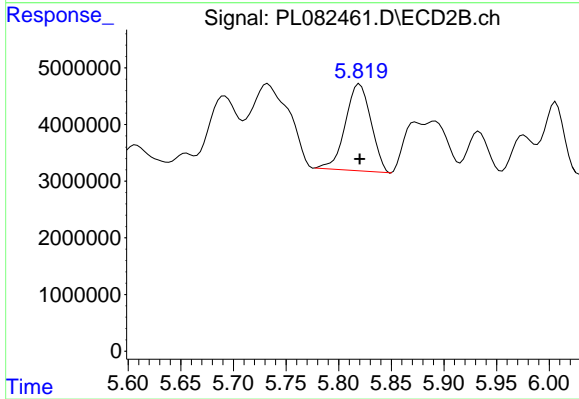
#3 Toxaphene-2

R.T.: 5.536 min
 Delta R.T.: 0.000 min
 Response: 1785702
 Conc: 145.13 ng/ml



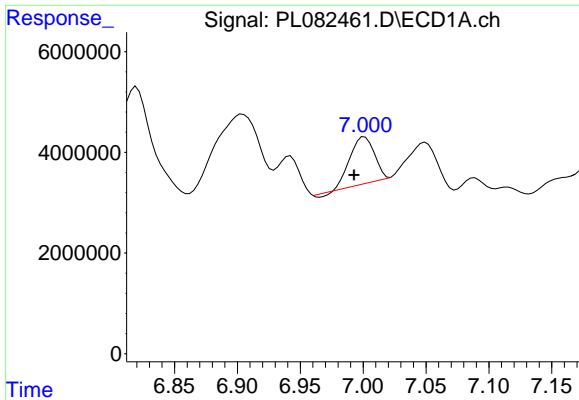
#4 Toxaphene-3

R.T.: 6.904 min
 Delta R.T.: 0.008 min
 Response: 28291718
 Conc: 588.54 ng/ml



#4 Toxaphene-3

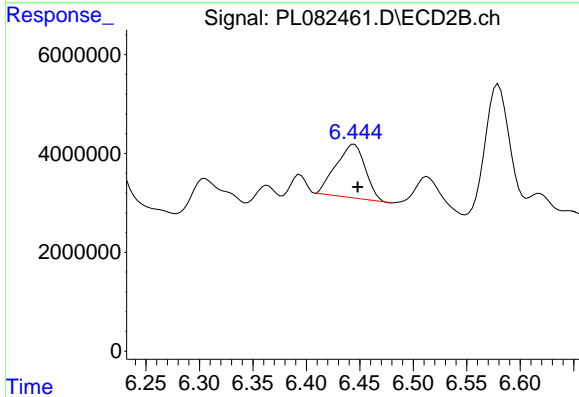
R.T.: 5.820 min
 Delta R.T.: 0.000 min
 Response: 25903291
 Conc: 1700.12 ng/ml



#5 Toxaphene-4

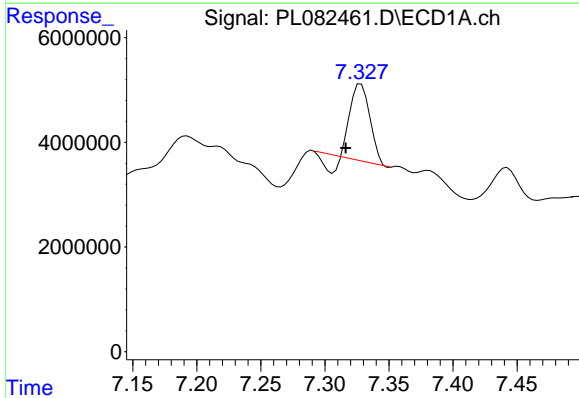
R.T.: 7.001 min
 Delta R.T.: 0.008 min
 Response: 12141376
 Conc: 410.04 ng/ml

Instrument :
 ECD_L
 ClientSampleId :



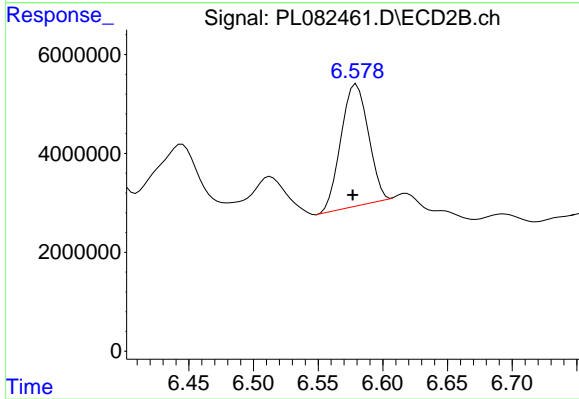
#5 Toxaphene-4

R.T.: 6.445 min
 Delta R.T.: -0.003 min
 Response: 20641825
 Conc: 451.60 ng/ml



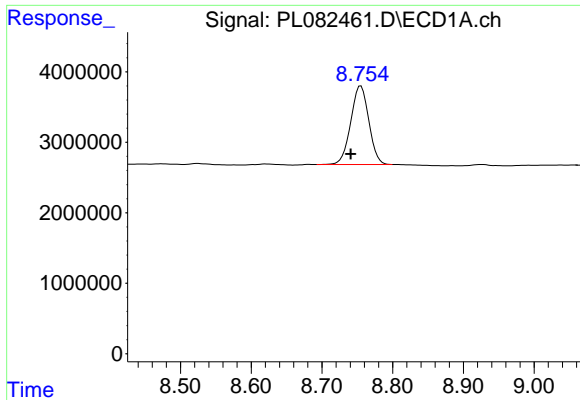
#6 Toxaphene-5

R.T.: 7.328 min
 Delta R.T.: 0.012 min
 Response: 13605714
 Conc: 388.98 ng/ml



#6 Toxaphene-5

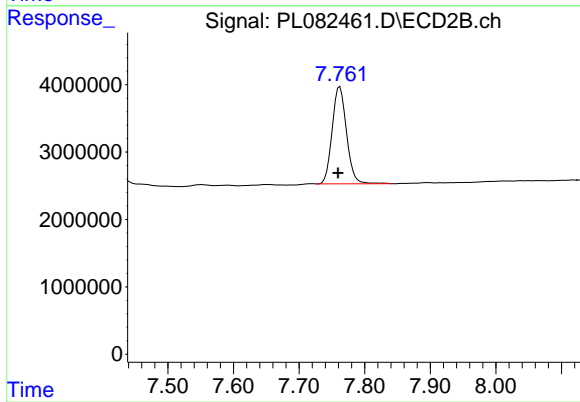
R.T.: 6.580 min
 Delta R.T.: 0.003 min
 Response: 36144767
 Conc: 558.25 ng/ml



#7 Decachlorobiphenyl

R.T.: 8.755 min
Delta R.T.: 0.014 min
Response: 19818908
Conc: 11.38 ng/ml

Instrument :
ECD_L
ClientSampleId :



#7 Decachlorobiphenyl

R.T.: 7.762 min
Delta R.T.: 0.003 min
Response: 21917755
Conc: 10.90 ng/ml