

Data Path : Z:\pestpcbsrv\HPCHEM1\ECD_L\Data\PL050323\
 Data File : PL082468.D
 Signal(s) : Signal #1: ECD1A.ch Signal #2: ECD2B.ch
 Acq On : 03 May 2023 17:58
 Operator : AR\AJ
 Sample : PB152546BS
 Misc :
 ALS Vial : 16 Sample Multiplier: 1

Instrument :
 ECD_L
 ClientSampleId :

Integration File signal 1: autoint1.e
 Integration File signal 2: autoint2.e
 Quant Time: May 03 21:45:57 2023
 Quant Method : Z:\pestpcbsrv\HPCHEM1\ECD_L\methods\PL042023.M
 Quant Title : GC Extractables
 QLast Update : Fri Apr 21 03:12:31 2023
 Response via : Initial Calibration
 Integrator: ChemStation

Volume Inj. : 1 µl
 Signal #1 Phase : ZB-MR2 Signal #2 Phase: ZB-MR1
 Signal #1 Info : 30M x 0.32mm x0.2 Signal #2 Info : 30M x 0.32mm x0.5µm

	Compound	RT#1	RT#2	Resp#1	Resp#2	ng/ml	ng/ml

System Monitoring Compounds							
1)	SA Tetrachlo...	3.323	2.645	55957327	45768756	20.948	19.756
28)	SA Decachlor...	8.747	7.757	44678711	48154128	23.403	21.097
Target Compounds							
2)	A alpha-BHC	3.773	3.143	219.6E6	172.3E6	55.184	50.631
3)	MA gamma-BHC...	4.101	3.469	203.1E6	161.9E6	54.327	50.362
4)	MA Heptachlor	4.680	3.801	196.6E6	166.0E6	53.817	48.483
5)	MB Aldrin	5.017	4.078	184.4E6	162.7E6	55.916	51.663
6)	B beta-BHC	4.304	3.770	87165191	66611122	51.108	48.821
7)	B delta-BHC	4.546	3.996	202.2E6	157.4E6	56.200	51.310
8)	B Heptachlo...	5.443	4.580	162.6E6	144.5E6	53.294	50.151
9)	A Endosulfan I	5.824	4.948	154.0E6	133.9E6	55.540	50.151
10)	B gamma-Chl...	5.698	4.829	173.7E6	145.8E6	57.774	50.239
11)	B alpha-Chl...	5.776	4.892	166.4E6	144.4E6	55.750	49.747
12)	B 4,4'-DDE	5.954	5.083	146.4E6	124.9E6	57.578	54.343
13)	MA Dieldrin	6.098	5.212	155.8E6	138.3E6	56.457	51.208
14)	MA Endrin	6.325	5.486	130.9E6	119.0E6	54.005	48.656
15)	B Endosulfa...	6.549	5.783	128.4E6	118.6E6	52.757	52.597
16)	A 4,4'-DDD	6.471	5.637	120.4E6	106.4E6	59.408	56.902
17)	MA 4,4'-DDT	6.781	5.886	120.0E6	106.1E6	52.459	50.221
18)	B Endrin al...	6.678	5.963	108.0E6	97408665	57.302	52.052
19)	B Endosulfa...	6.913	6.185	131.0E6	120.6E6	55.227	51.228
20)	A Methoxychlor	7.263	6.465	63701730	59361815	52.200	48.985
21)	B Endrin ke...	7.393	6.691	138.3E6	139.7E6	57.752	55.038
22)	Mirex	7.857	6.862	98072743	106.1E6	50.131	46.032
23)	Chlordane-1	0.000	3.623	0	458190	N.D.	5.166 #
24)	Chlordane-2	5.017f	4.223f	184.4E6	4241513	1548.804	37.822 #
25)	Chlordane-3	5.698	4.829	173.7E6	145.8E6	402.401	513.131 #
26)	Chlordane-4	5.776	4.892	166.4E6	144.4E6	320.039	483.930 #
27)	Chlordane-5	0.000	5.783	0	118.6E6	N.D.	1201.052 #

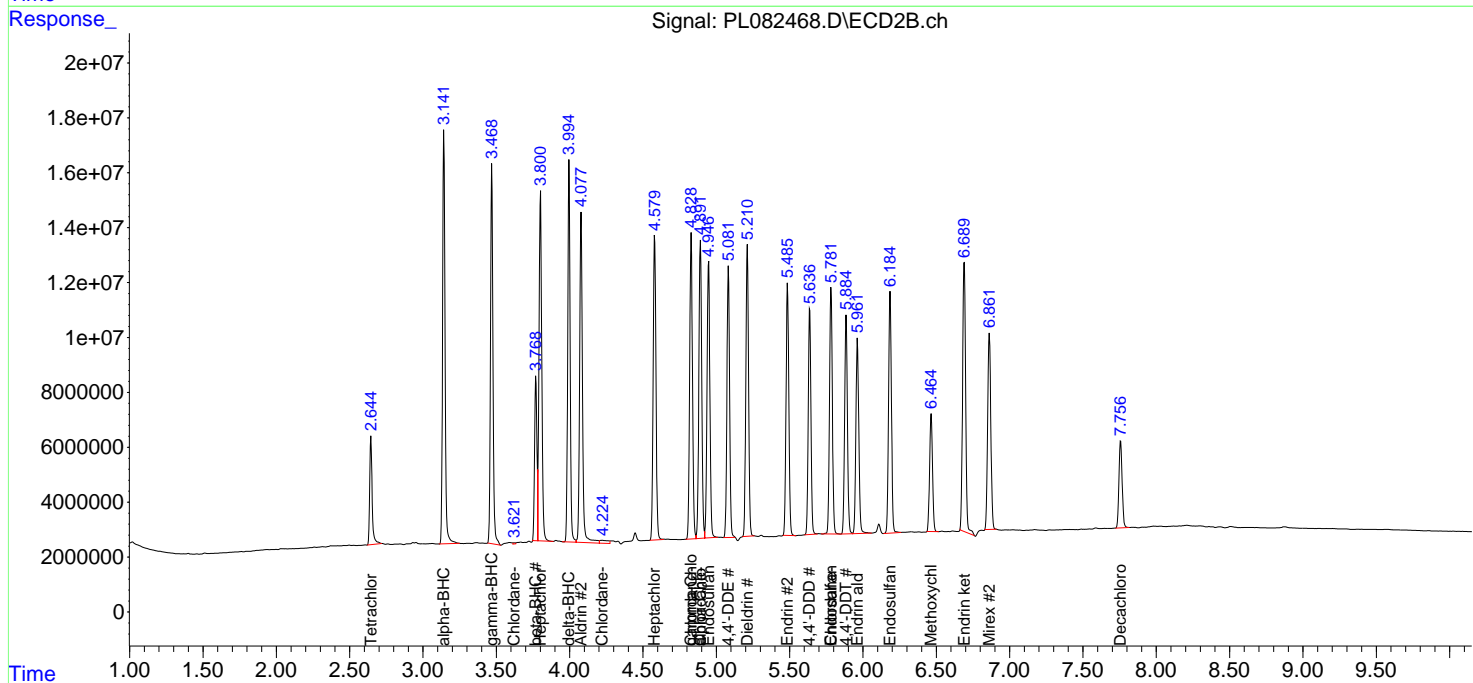
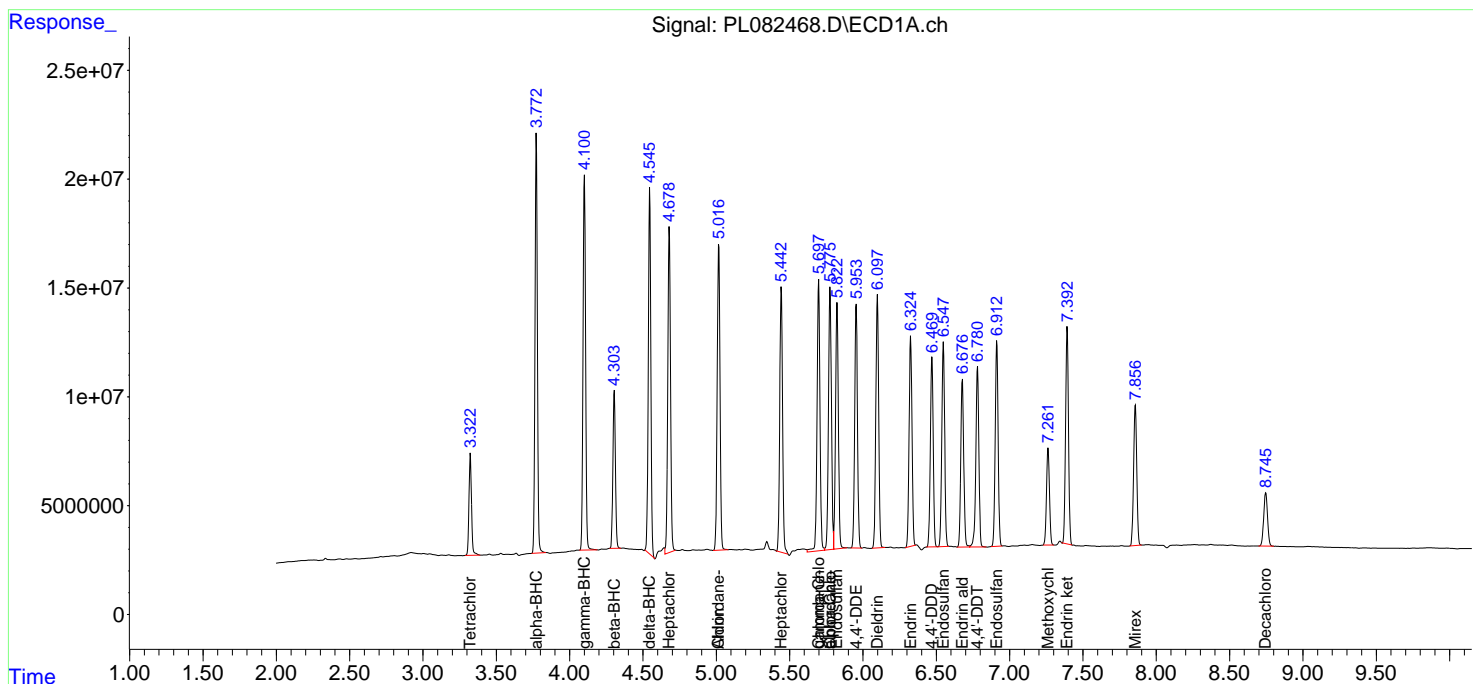
(f)=RT Delta > 1/2 Window (#)=Amounts differ by > 25% (m)=manual int.

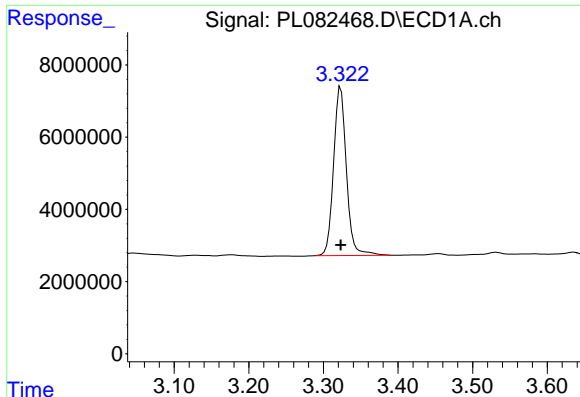
Data Path : Z:\pestpcbsrv\HPCHEM1\ECD_L\Data\PL050323\
 Data File : PL082468.D
 Signal(s) : Signal #1: ECD1A.ch Signal #2: ECD2B.ch
 Acq On : 03 May 2023 17:58
 Operator : AR\AJ
 Sample : PB152546BS
 Misc :
 ALS Vial : 16 Sample Multiplier: 1

Instrument :
 ECD_L
 ClientSampleId :

Integration File signal 1: autoint1.e
 Integration File signal 2: autoint2.e
 Quant Time: May 03 21:45:57 2023
 Quant Method : Z:\pestpcbsrv\HPCHEM1\ECD_L\methods\PL042023.M
 Quant Title : GC Extractables
 QLast Update : Fri Apr 21 03:12:31 2023
 Response via : Initial Calibration
 Integrator: ChemStation

Volume Inj. : 1 µl
 Signal #1 Phase : ZB-MR2 Signal #2 Phase: ZB-MR1
 Signal #1 Info : 30M x 0.32mm x0.2 Signal #2 Info : 30M x 0.32mm x0.5µm

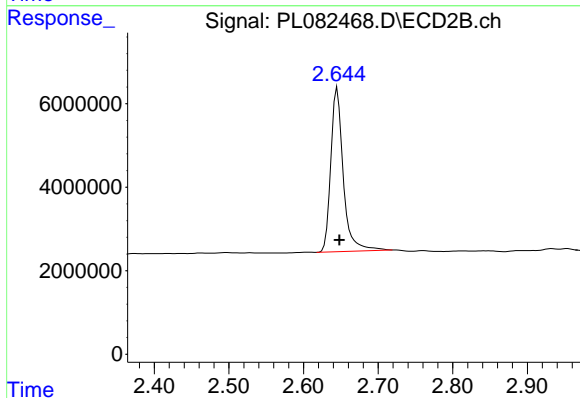




#1 Tetrachloro-m-xylene

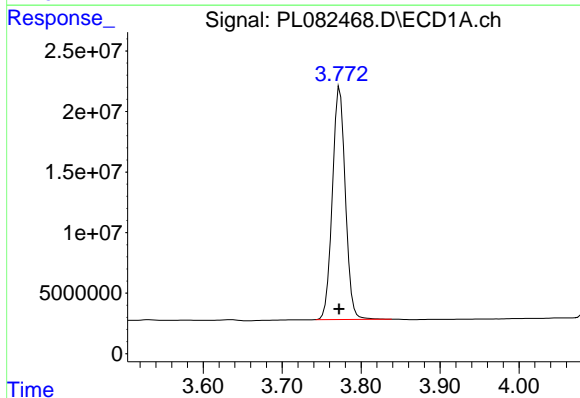
R.T.: 3.323 min
 Delta R.T.: 0.000 min
 Response: 55957327
 Conc: 20.95 ng/ml

Instrument :
 ECD_L
 ClientSampleId :



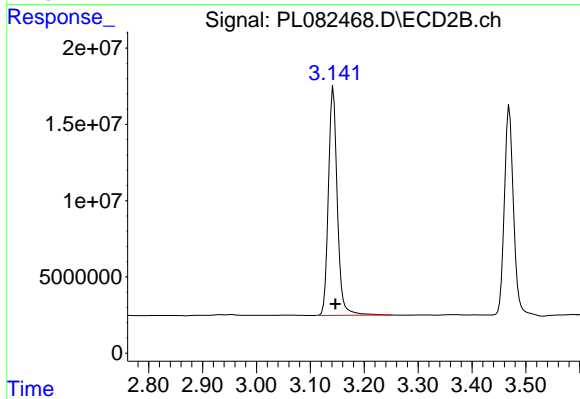
#1 Tetrachloro-m-xylene

R.T.: 2.645 min
 Delta R.T.: -0.003 min
 Response: 45768756
 Conc: 19.76 ng/ml



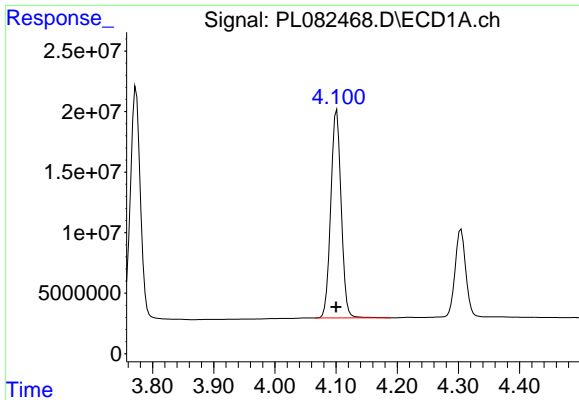
#2 alpha-BHC

R.T.: 3.773 min
 Delta R.T.: 0.000 min
 Response: 219644239
 Conc: 55.18 ng/ml



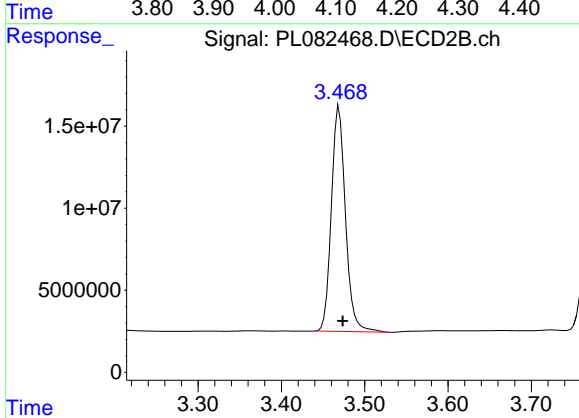
#2 alpha-BHC

R.T.: 3.143 min
 Delta R.T.: -0.004 min
 Response: 172323086
 Conc: 50.63 ng/ml

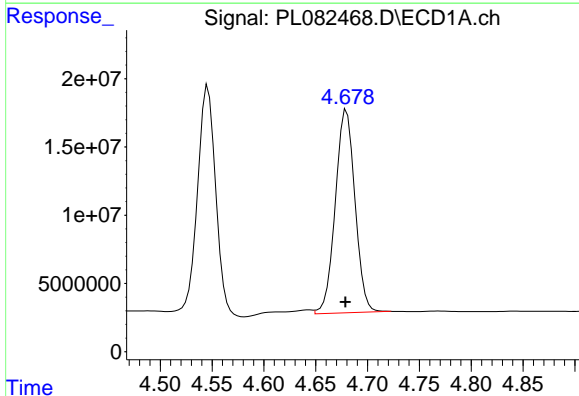


#3 gamma-BHC (Lindane)
 R.T.: 4.101 min
 Delta R.T.: 0.000 min
 Response: 203125693
 Conc: 54.33 ng/ml

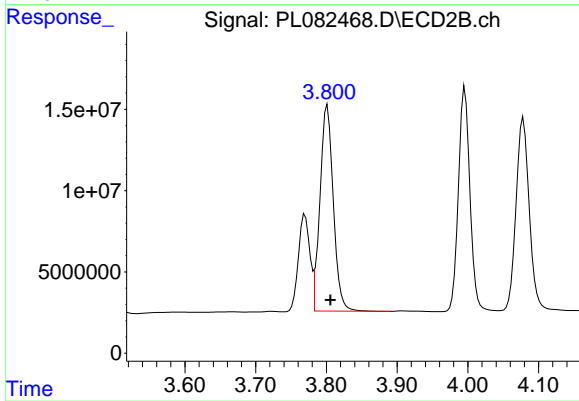
Instrument :
 ECD_L
 ClientSampleId :



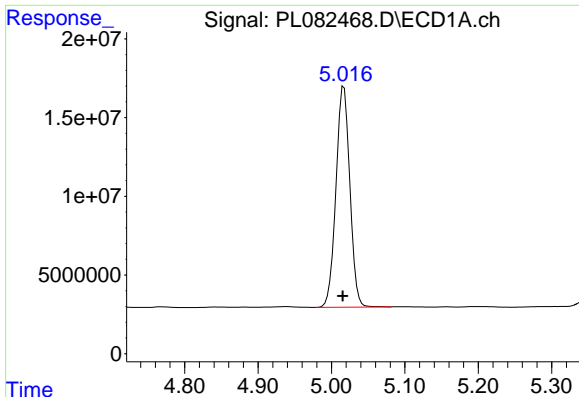
#3 gamma-BHC (Lindane)
 R.T.: 3.469 min
 Delta R.T.: -0.004 min
 Response: 161929209
 Conc: 50.36 ng/ml



#4 Heptachlor
 R.T.: 4.680 min
 Delta R.T.: 0.001 min
 Response: 196644113
 Conc: 53.82 ng/ml



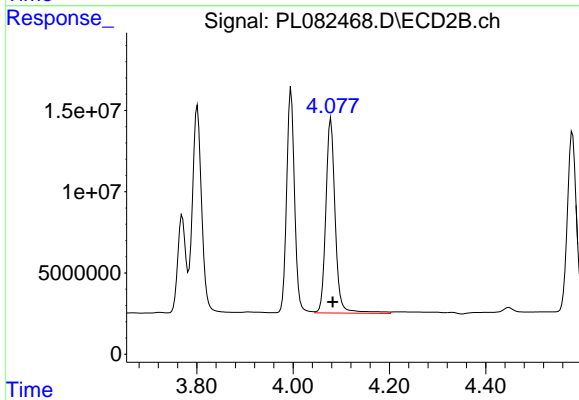
#4 Heptachlor
 R.T.: 3.801 min
 Delta R.T.: -0.004 min
 Response: 165970428
 Conc: 48.48 ng/ml



#5 Aldrin

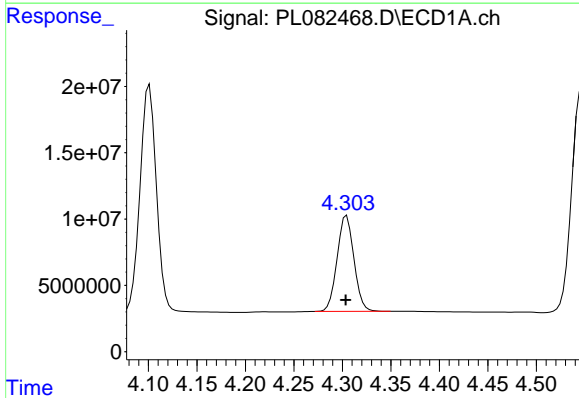
R.T.: 5.017 min
 Delta R.T.: 0.001 min
 Response: 184388905
 Conc: 55.92 ng/ml

Instrument :
 ECD_L
 ClientSampleId :



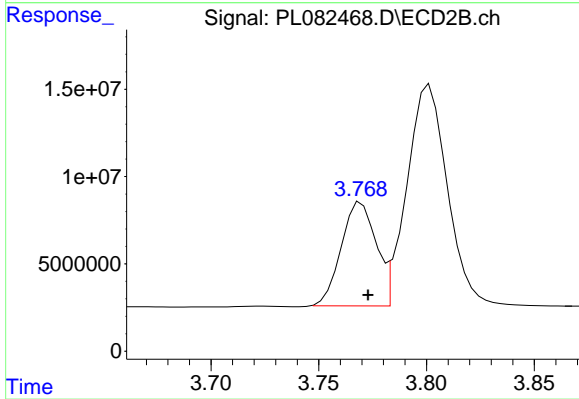
#5 Aldrin

R.T.: 4.078 min
 Delta R.T.: -0.004 min
 Response: 162731070
 Conc: 51.66 ng/ml



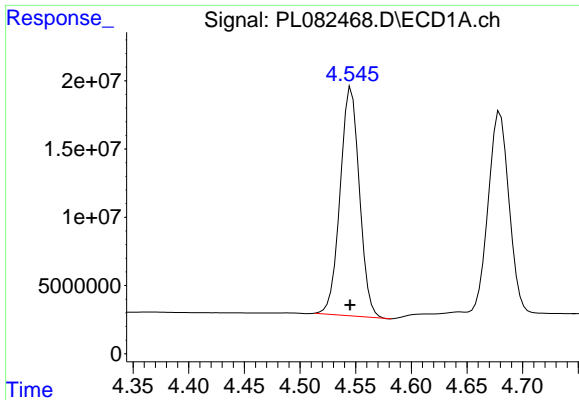
#6 beta-BHC

R.T.: 4.304 min
 Delta R.T.: 0.000 min
 Response: 87165191
 Conc: 51.11 ng/ml



#6 beta-BHC

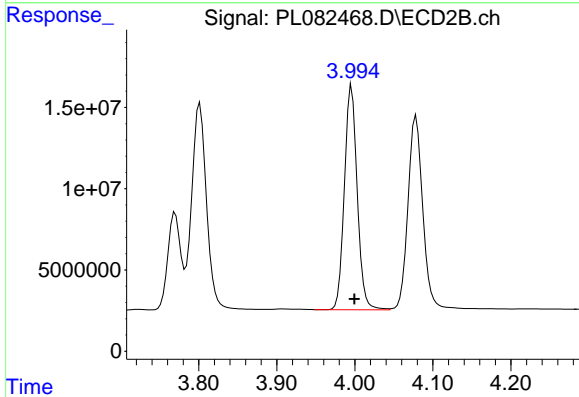
R.T.: 3.770 min
 Delta R.T.: -0.003 min
 Response: 66611122
 Conc: 48.82 ng/ml



#7 delta-BHC

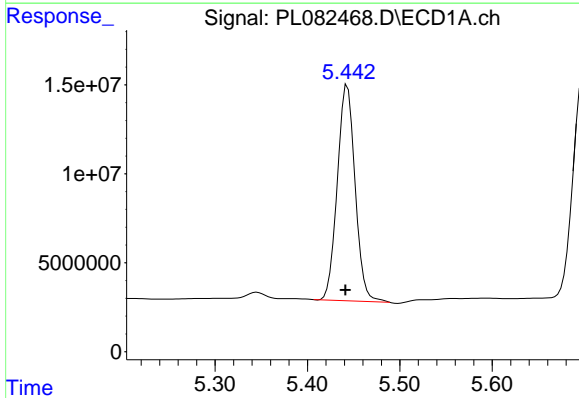
R.T.: 4.546 min
 Delta R.T.: 0.000 min
 Response: 202196724
 Conc: 56.20 ng/ml

Instrument :
 ECD_L
 ClientSampleId :



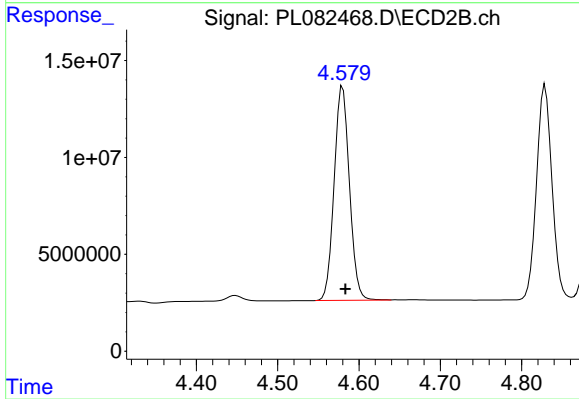
#7 delta-BHC

R.T.: 3.996 min
 Delta R.T.: -0.004 min
 Response: 157386464
 Conc: 51.31 ng/ml



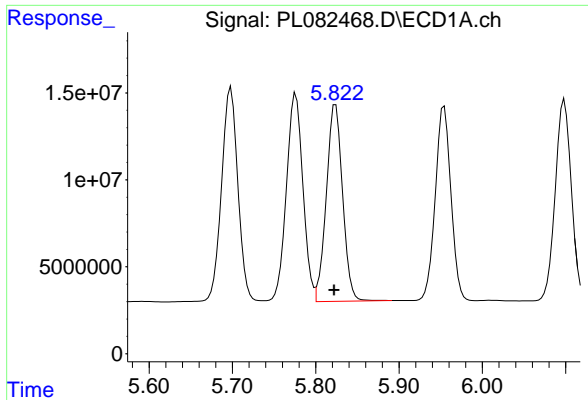
#8 Heptachlor epoxide

R.T.: 5.443 min
 Delta R.T.: 0.002 min
 Response: 162565727
 Conc: 53.29 ng/ml



#8 Heptachlor epoxide

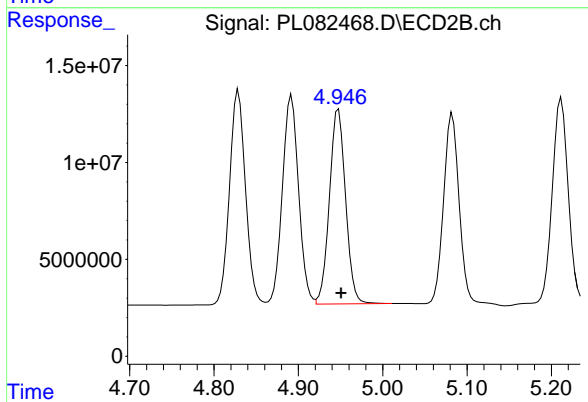
R.T.: 4.580 min
 Delta R.T.: -0.003 min
 Response: 144479411
 Conc: 50.15 ng/ml



#9 Endosulfan I

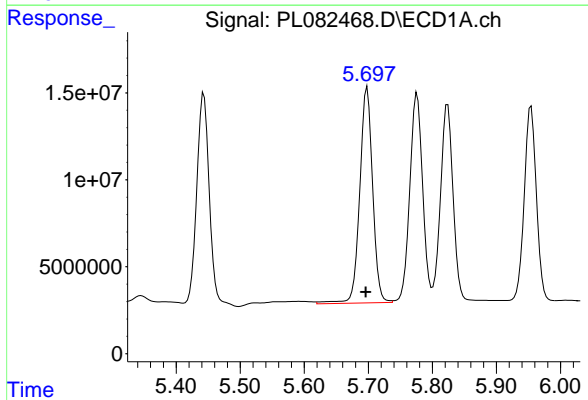
R.T.: 5.824 min
 Delta R.T.: 0.002 min
 Response: 153997405
 Conc: 55.54 ng/ml

Instrument :
 ECD_L
 ClientSampleId :



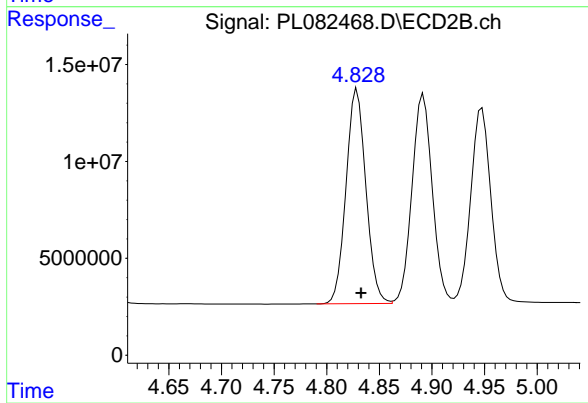
#9 Endosulfan I

R.T.: 4.948 min
 Delta R.T.: -0.003 min
 Response: 133876095
 Conc: 50.15 ng/ml



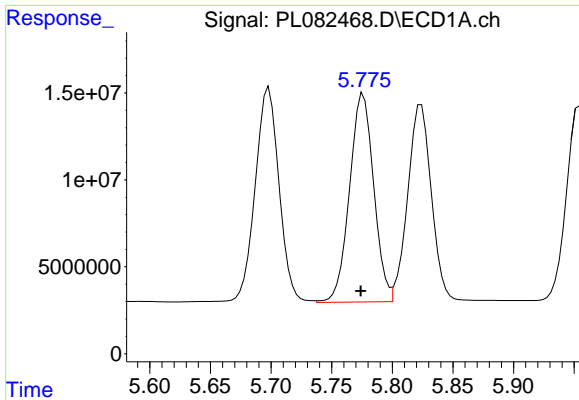
#10 gamma-Chlordane

R.T.: 5.698 min
 Delta R.T.: 0.002 min
 Response: 173717921
 Conc: 57.77 ng/ml



#10 gamma-Chlordane

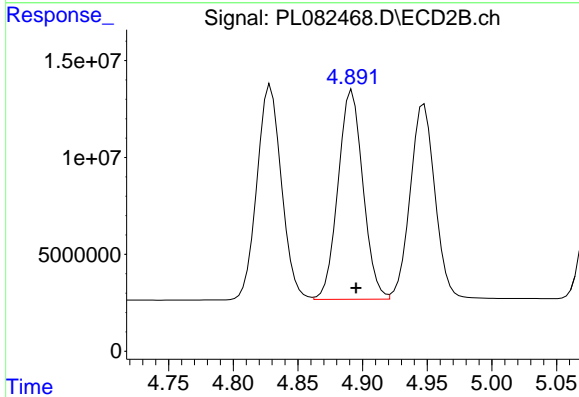
R.T.: 4.829 min
 Delta R.T.: -0.004 min
 Response: 145785564
 Conc: 50.24 ng/ml



#11 alpha-Chlordane

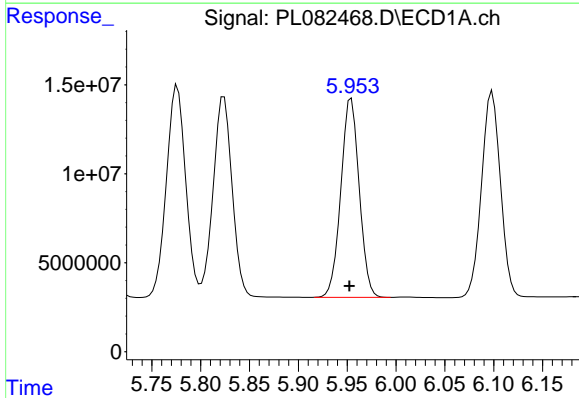
R.T.: 5.776 min
 Delta R.T.: 0.002 min
 Response: 166393144
 Conc: 55.75 ng/ml

Instrument :
 ECD_L
 ClientSampleId :



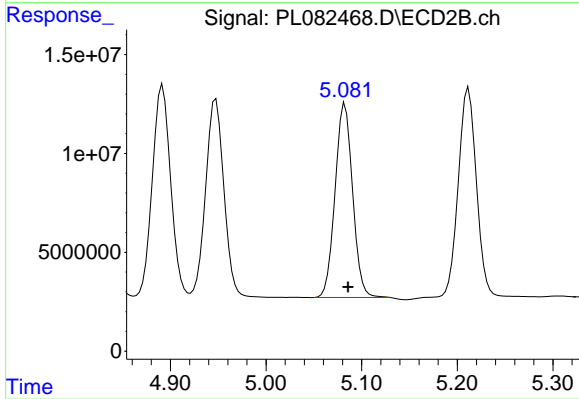
#11 alpha-Chlordane

R.T.: 4.892 min
 Delta R.T.: -0.003 min
 Response: 144407896
 Conc: 49.75 ng/ml



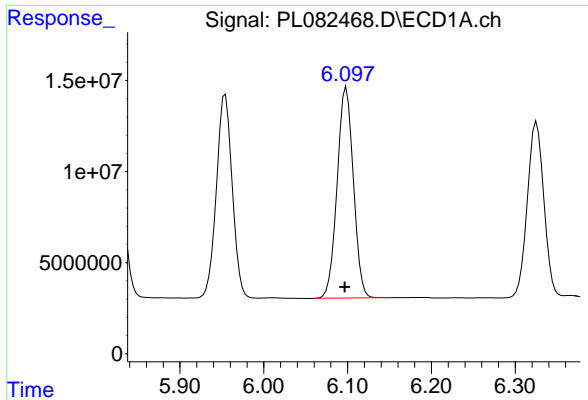
#12 4,4'-DDE

R.T.: 5.954 min
 Delta R.T.: 0.002 min
 Response: 146365480
 Conc: 57.58 ng/ml



#12 4,4'-DDE

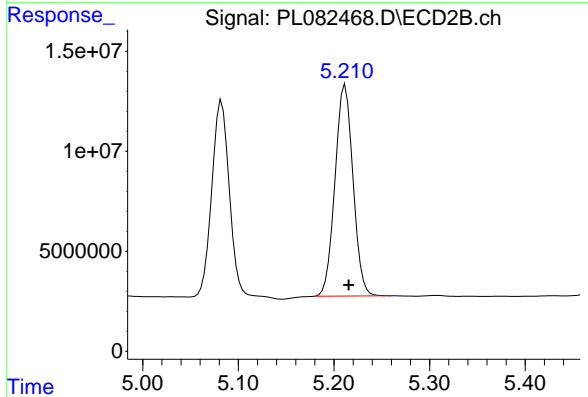
R.T.: 5.083 min
 Delta R.T.: -0.003 min
 Response: 124931534
 Conc: 54.34 ng/ml



#13 Dieldrin

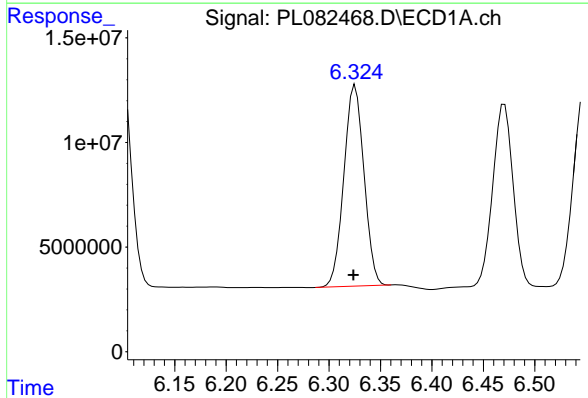
R.T.: 6.098 min
 Delta R.T.: 0.002 min
 Response: 155772364
 Conc: 56.46 ng/ml

Instrument :
 ECD_L
 ClientSampleId :



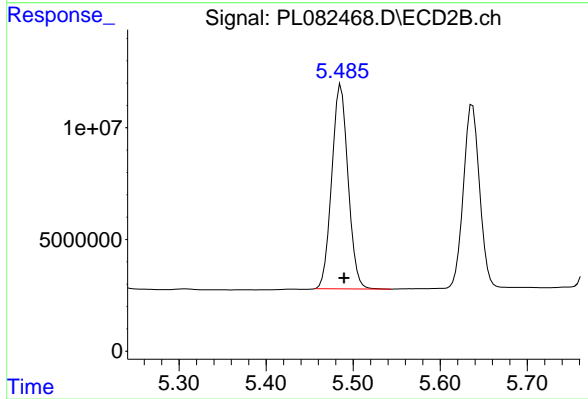
#13 Dieldrin

R.T.: 5.212 min
 Delta R.T.: -0.004 min
 Response: 138282126
 Conc: 51.21 ng/ml



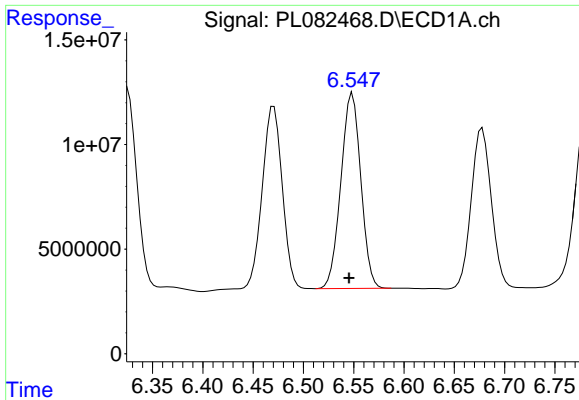
#14 Endrin

R.T.: 6.325 min
 Delta R.T.: 0.002 min
 Response: 130938129
 Conc: 54.01 ng/ml



#14 Endrin

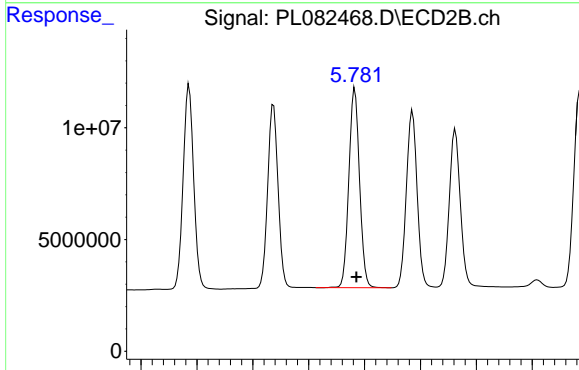
R.T.: 5.486 min
 Delta R.T.: -0.004 min
 Response: 119011382
 Conc: 48.66 ng/ml



#15 Endosulfan II

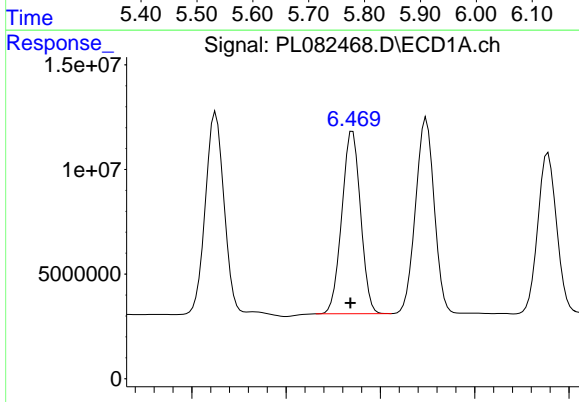
R.T.: 6.549 min
 Delta R.T.: 0.003 min
 Response: 128441281
 Conc: 52.76 ng/ml

Instrument :
 ECD_L
 ClientSampleId :



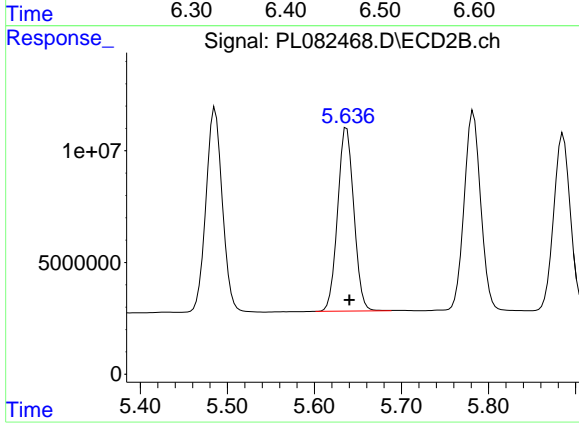
#15 Endosulfan II

R.T.: 5.783 min
 Delta R.T.: -0.003 min
 Response: 118558733
 Conc: 52.60 ng/ml



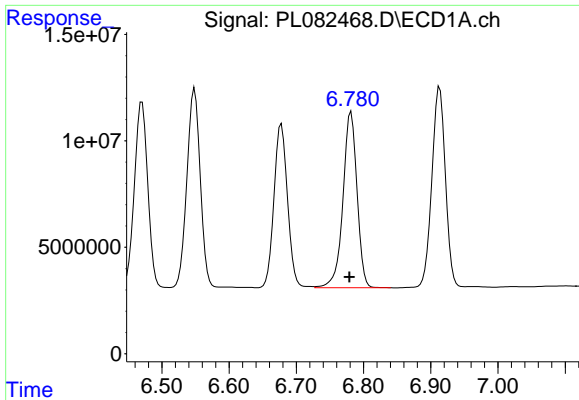
#16 4,4'-DDD

R.T.: 6.471 min
 Delta R.T.: 0.002 min
 Response: 120431260
 Conc: 59.41 ng/ml



#16 4,4'-DDD

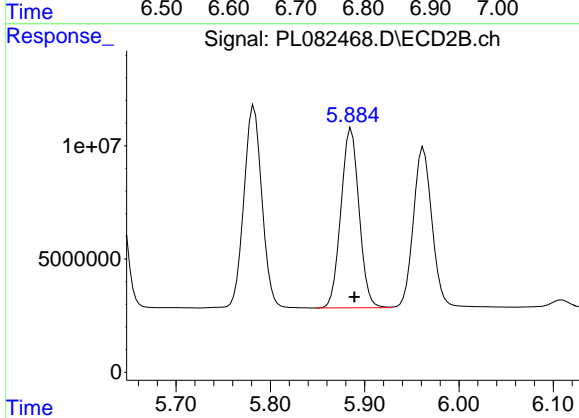
R.T.: 5.637 min
 Delta R.T.: -0.003 min
 Response: 106429868
 Conc: 56.90 ng/ml



#17 4,4'-DDT

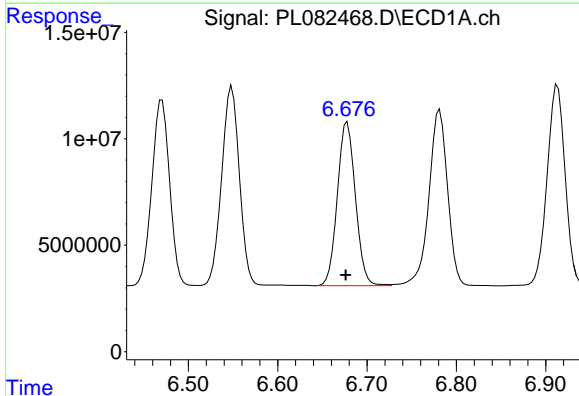
R.T.: 6.781 min
 Delta R.T.: 0.002 min
 Response: 120011729
 Conc: 52.46 ng/ml

Instrument :
 ECD_L
 ClientSampleId :



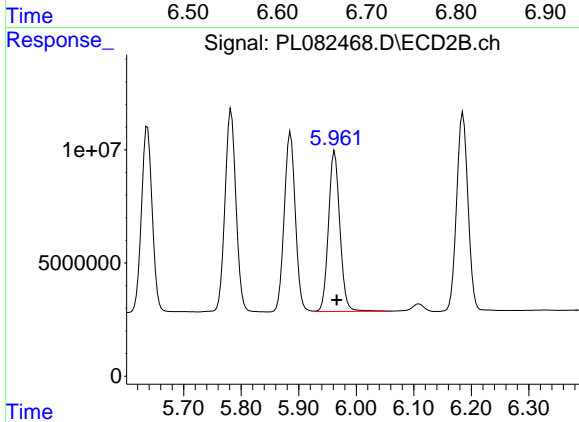
#17 4,4'-DDT

R.T.: 5.886 min
 Delta R.T.: -0.003 min
 Response: 106097540
 Conc: 50.22 ng/ml



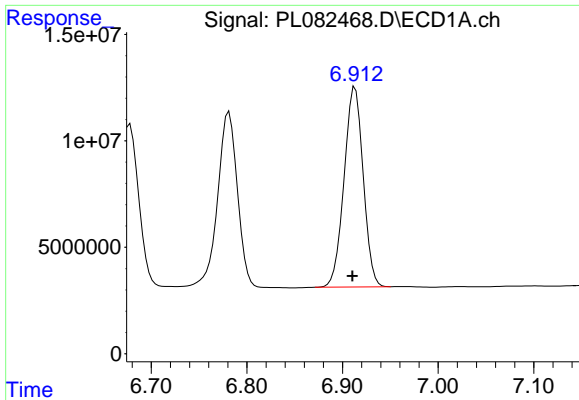
#18 Endrin aldehyde

R.T.: 6.678 min
 Delta R.T.: 0.002 min
 Response: 107966600
 Conc: 57.30 ng/ml



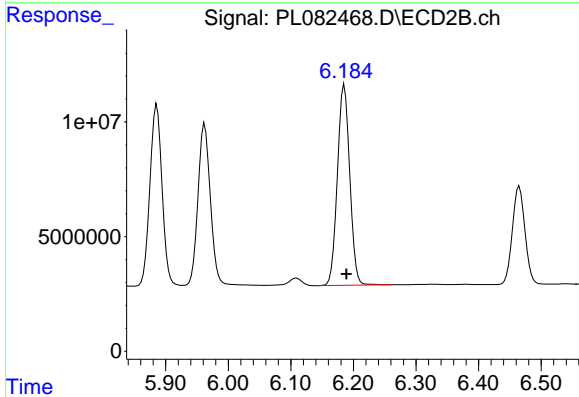
#18 Endrin aldehyde

R.T.: 5.963 min
 Delta R.T.: -0.004 min
 Response: 97408665
 Conc: 52.05 ng/ml

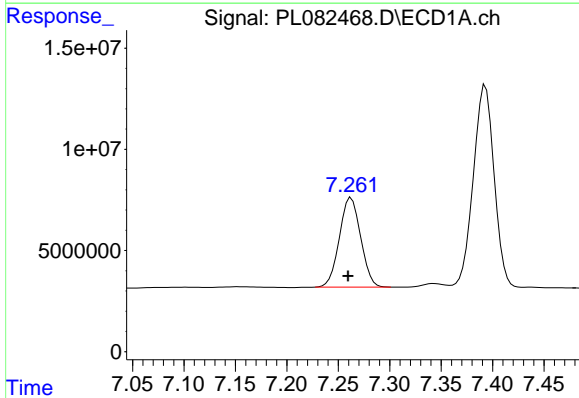


#19 Endosulfan Sulfate
 R.T.: 6.913 min
 Delta R.T.: 0.003 min
 Response: 130973416
 Conc: 55.23 ng/ml

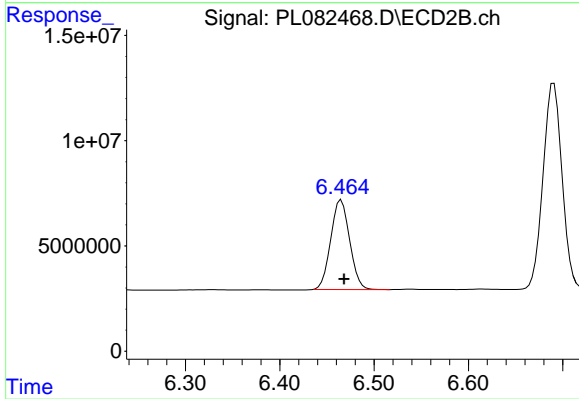
Instrument :
 ECD_L
 ClientSampleId :



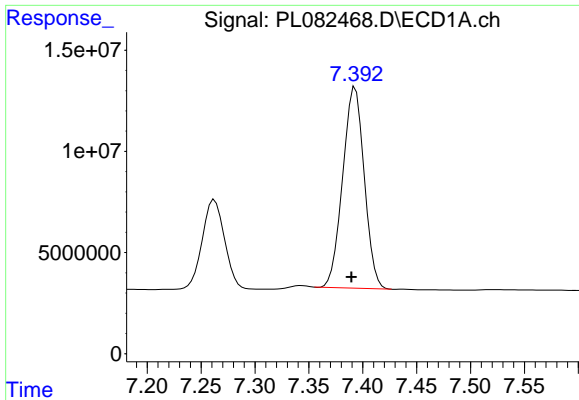
#19 Endosulfan Sulfate
 R.T.: 6.185 min
 Delta R.T.: -0.003 min
 Response: 120605990
 Conc: 51.23 ng/ml



#20 Methoxychlor
 R.T.: 7.263 min
 Delta R.T.: 0.003 min
 Response: 63701730
 Conc: 52.20 ng/ml



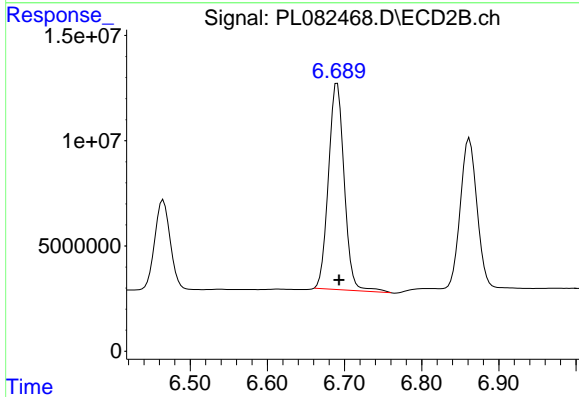
#20 Methoxychlor
 R.T.: 6.465 min
 Delta R.T.: -0.003 min
 Response: 59361815
 Conc: 48.99 ng/ml



#21 Endrin ketone

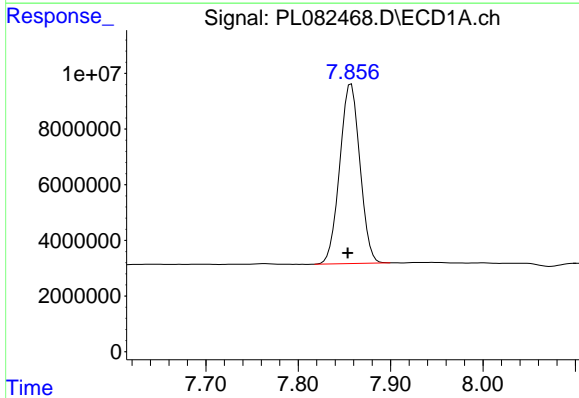
R.T.: 7.393 min
 Delta R.T.: 0.004 min
 Response: 138282213
 Conc: 57.75 ng/ml

Instrument :
 ECD_L
 ClientSampleId :



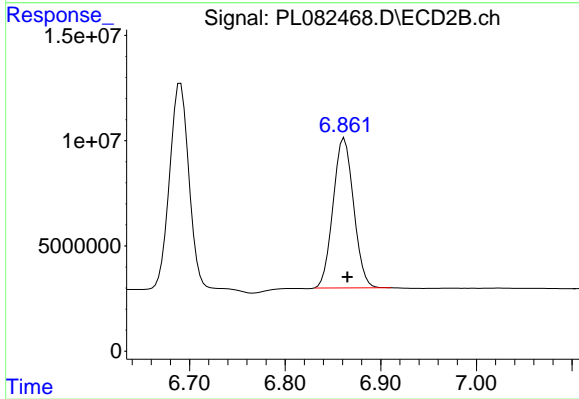
#21 Endrin ketone

R.T.: 6.691 min
 Delta R.T.: -0.002 min
 Response: 139697536
 Conc: 55.04 ng/ml



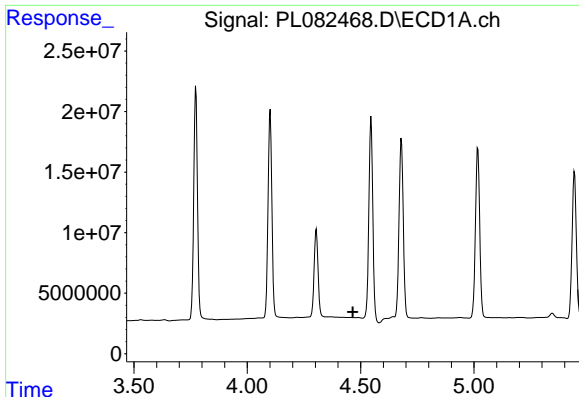
#22 Mirex

R.T.: 7.857 min
 Delta R.T.: 0.004 min
 Response: 98072743
 Conc: 50.13 ng/ml



#22 Mirex

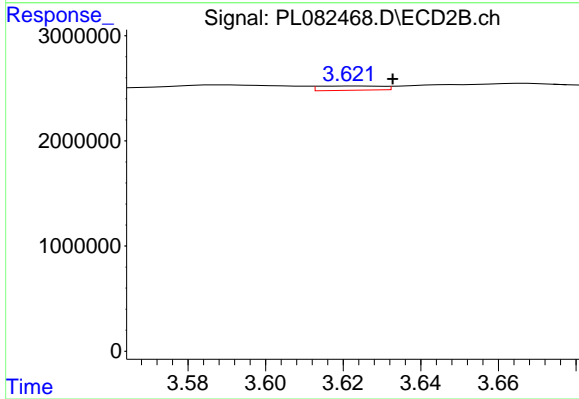
R.T.: 6.862 min
 Delta R.T.: -0.003 min
 Response: 106071093
 Conc: 46.03 ng/ml



#23 Chlordane-1

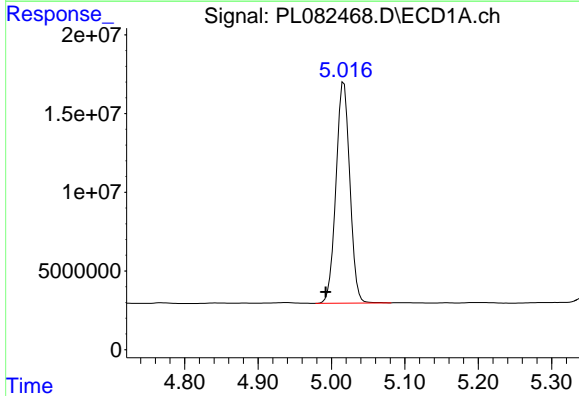
R.T.: 0.000 min
 Exp R.T.: 4.466 min
 Response: 0
 Conc: N.D.

Instrument :
 ECD_L
 ClientSampleId :



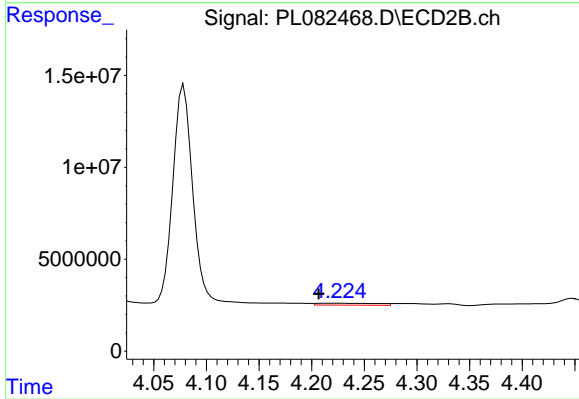
#23 Chlordane-1

R.T.: 3.623 min
 Delta R.T.: -0.010 min
 Response: 458190
 Conc: 5.17 ng/ml



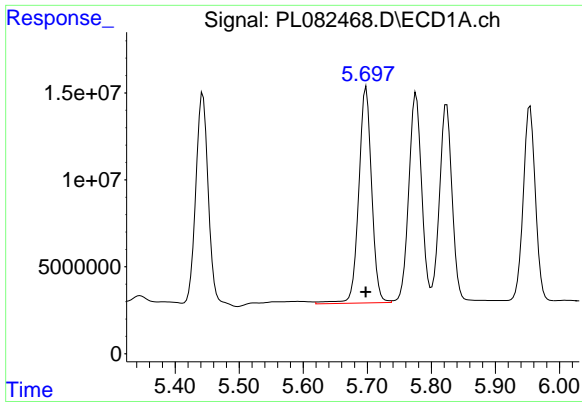
#24 Chlordane-2

R.T.: 5.017 min
 Delta R.T.: 0.025 min
 Response: 184388905
 Conc: 1548.80 ng/ml



#24 Chlordane-2

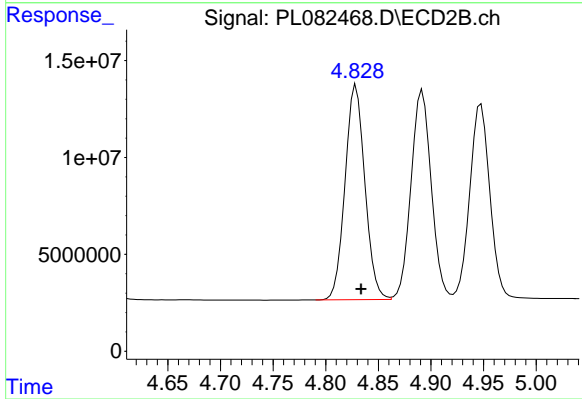
R.T.: 4.223 min
 Delta R.T.: 0.017 min
 Response: 4241513
 Conc: 37.82 ng/ml



#25 Chlordane-3

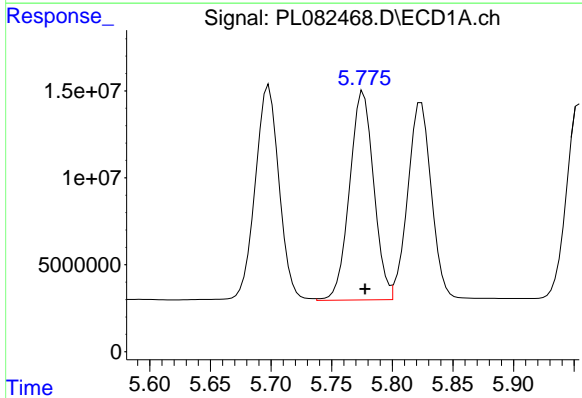
R.T.: 5.698 min
 Delta R.T.: 0.000 min
 Response: 173717921
 Conc: 402.40 ng/ml

Instrument :
 ECD_L
 ClientSampleId :



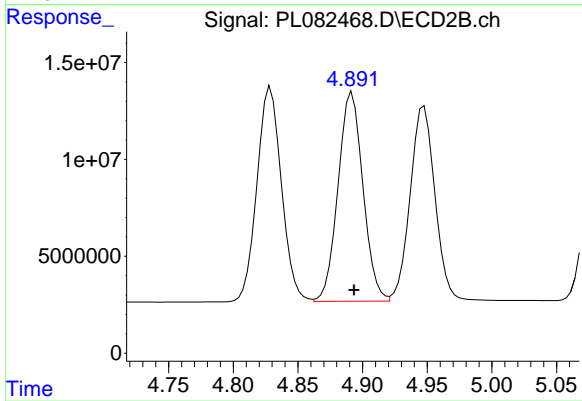
#25 Chlordane-3

R.T.: 4.829 min
 Delta R.T.: -0.005 min
 Response: 145785564
 Conc: 513.13 ng/ml



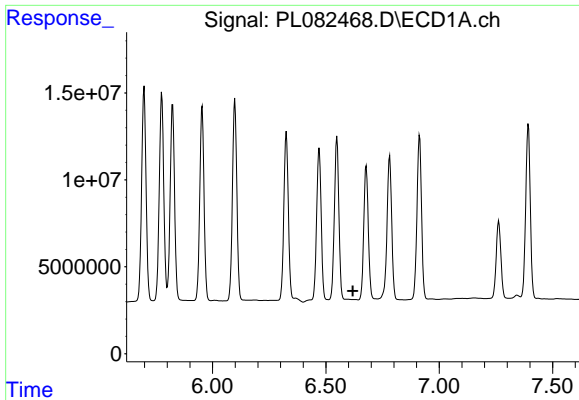
#26 Chlordane-4

R.T.: 5.776 min
 Delta R.T.: -0.001 min
 Response: 166393144
 Conc: 320.04 ng/ml



#26 Chlordane-4

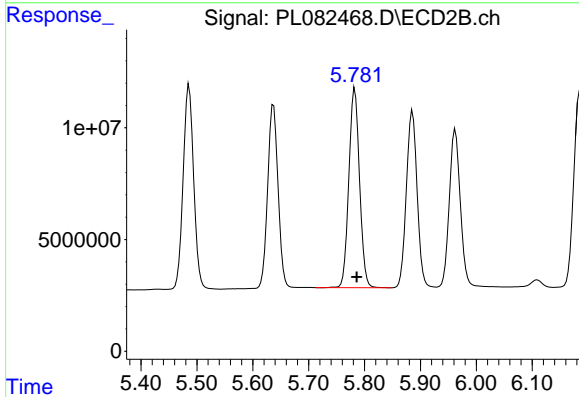
R.T.: 4.892 min
 Delta R.T.: -0.002 min
 Response: 144407896
 Conc: 483.93 ng/ml



#27 Chlordane-5

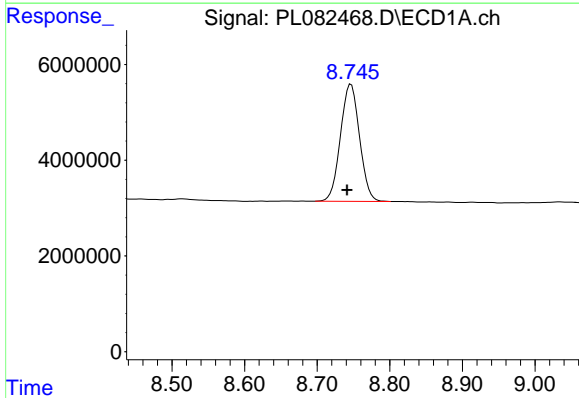
R.T.: 0.000 min
 Exp R.T.: 6.619 min
 Response: 0
 Conc: N.D.

Instrument :
 ECD_L
 ClientSampleId :



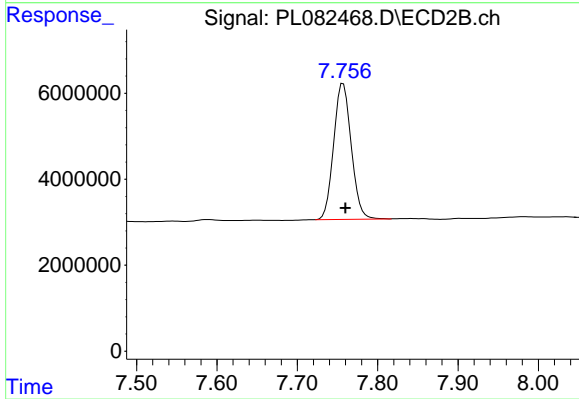
#27 Chlordane-5

R.T.: 5.783 min
 Delta R.T.: -0.004 min
 Response: 118558733
 Conc: 1201.05 ng/ml



#28 Decachlorobiphenyl

R.T.: 8.747 min
 Delta R.T.: 0.006 min
 Response: 44678711
 Conc: 23.40 ng/ml



#28 Decachlorobiphenyl

R.T.: 7.757 min
 Delta R.T.: -0.003 min
 Response: 48154128
 Conc: 21.10 ng/ml