

Data Path : Z:\pestpcbsrv\HPCHEM1\ECD_L\Data\PL050422\
 Data File : PL074531.D
 Signal(s) : Signal #1: ECD1A.ch Signal #2: ECD2B.ch
 Acq On : 04 May 2022 20:08
 Operator : AR\AJ
 Sample : PEM
 Misc :
 ALS Vial : 3 Sample Multiplier: 1

Instrument :
 ECD_L
 ClientSampleId :

Integration File signal 1: autoint1.e
 Integration File signal 2: autoint2.e
 Quant Time: May 04 23:30:35 2022
 Quant Method : Z:\pestpcbsrv\HPCHEM1\ECD_L\methods\PL040822.M
 Quant Title : GC Extractables
 QLast Update : Thu Apr 14 09:29:23 2022
 Response via : Initial Calibration
 Integrator: ChemStation

Volume Inj. : 1 µl
 Signal #1 Phase : ZB-MR2 Signal #2 Phase: ZB-MR1
 Signal #1 Info : 30M x 0.32mm x0.2 Signal #2 Info : 30M x 0.32mm x0.5µm

Compound	RT#1	RT#2	Resp#1	Resp#2	ng/ml	ng/ml
System Monitoring Compounds						
1) SA Tetrachlo...	4.633	5.489	7175404	38882968	22.207	21.808
28) SA Decachlor...	10.403	11.332	11032367	41288232	21.215	23.376
Target Compounds						
2) A alpha-BHC	5.340	6.052	4409339	24564638	10.507	9.755
3) MA gamma-BHC...	5.764	6.441	4497496	23950866	10.724	10.118
5) MB Aldrin	6.528f	7.457	37487	179097	0.090	0.076
6) B beta-BHC	6.144	6.678	2260386	12967534	11.063	11.506
7) B delta-BHC	0.000	6.957	0	3003627	N.D.	1.230 #
8) B Heptachlo...	0.000	7.925	0	225412	N.D.	0.100 #
9) A Endosulfan I	0.000	8.303f	0	358311	N.D.	0.182 #
10) B gamma-Chl...	7.372	8.200	109450	180145	0.250	0.081 #
11) B alpha-Chl...	0.000	8.303f	0	358311	N.D.	0.166 #
12) B 4,4'-DDE	7.637	8.461	152106	652441	0.417	0.328
14) MA Endrin	8.056	8.845	21458707	95310205	52.824	56.275
15) B Endosulfa...	8.395f	9.059	306929	116308	0.745	0.067 #
16) A 4,4'-DDD	8.222	8.988	1260297	6232670	3.903	4.051
17) MA 4,4'-DDT	8.484	9.306	39776017	182.3E6	107.608	102.841
18) B Endrin al...	8.557	9.203	398369	435851	1.231	0.337 #
19) B Endosulfa...	8.783	0.000	60602	0	0.142	N.D. #
20) A Methoxychlor	9.079	9.787	56931359	227.4E6	229.314	236.373
21) B Endrin ke...	9.305	9.928	1514192	4907945	3.099	2.835
22) Mirex	9.512	0.000	48458	0	0.104	N.D. #
24) Chlordane-2	0.000	7.457	0	179097	N.D.	2.167 #
25) Chlordane-3	7.372	8.200	109450	180145	2.530	0.532 #
26) Chlordane-4	0.000	8.303f	0	358311	N.D.	0.903 #
27) Chlordane-5	8.395	0.000	306929	0	17.598	N.D. #

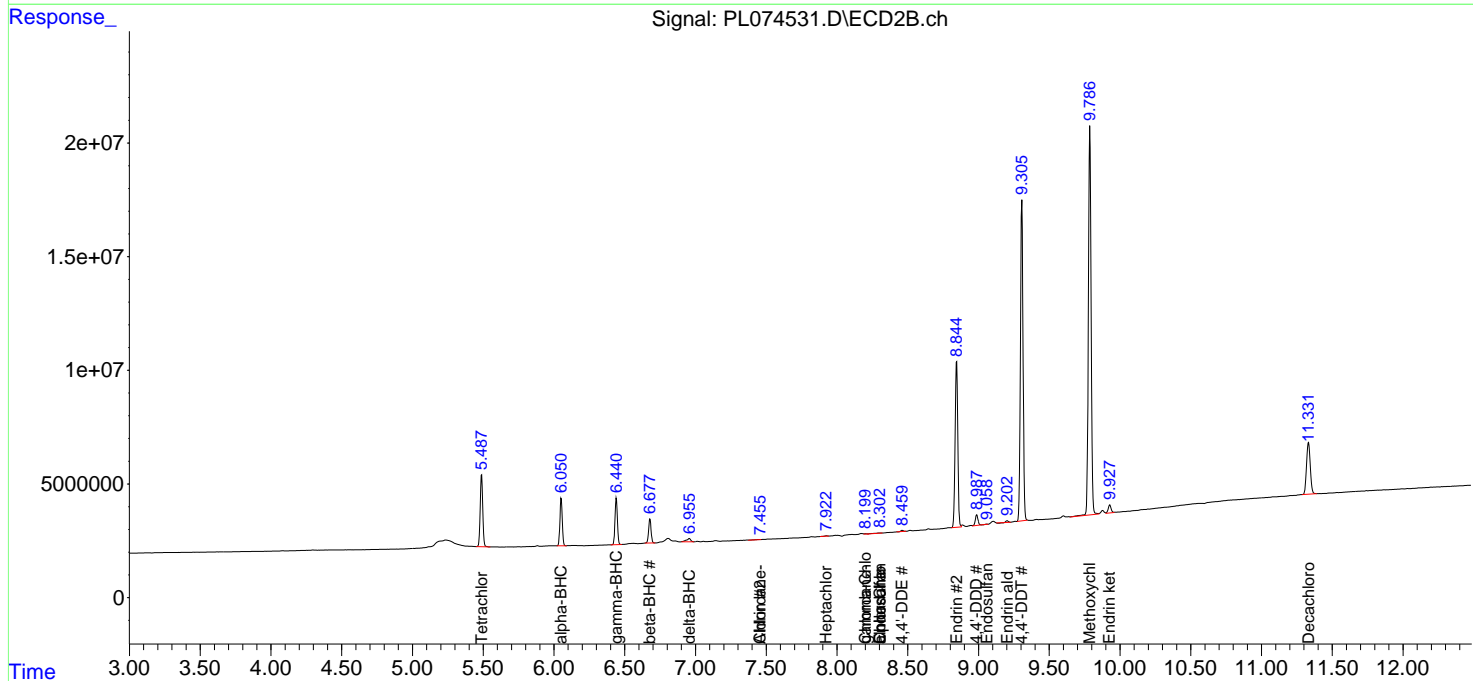
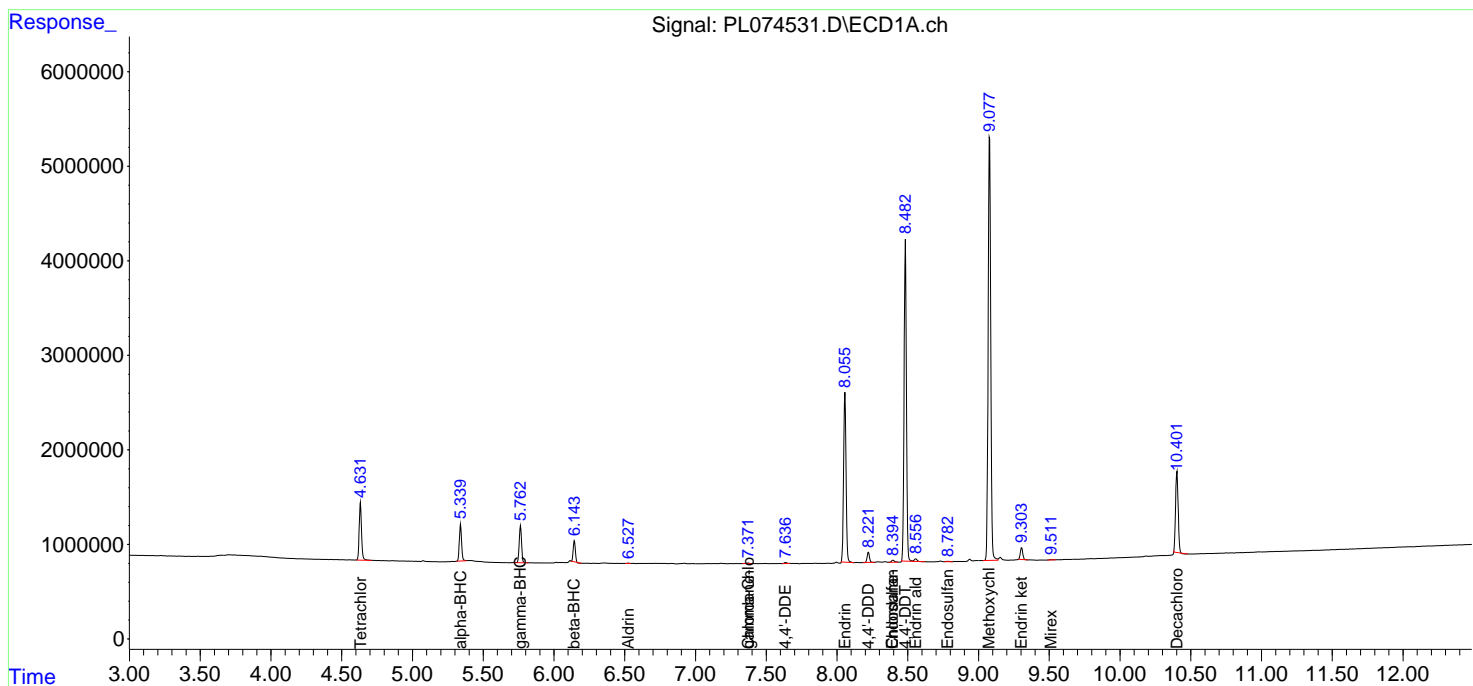
(f)=RT Delta > 1/2 Window (#)=Amounts differ by > 25% (m)=manual int.

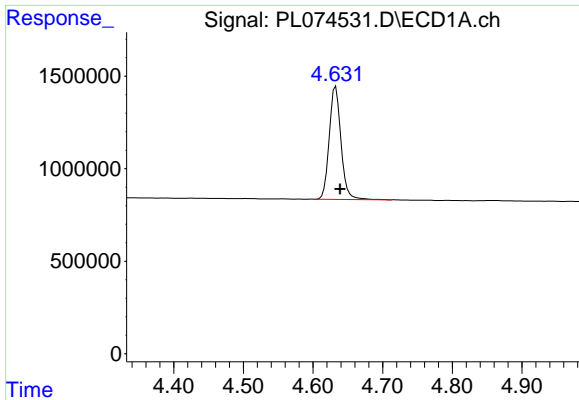
Data Path : Z:\pestpcbsrv\HPCHEM1\ECD_L\Data\PL050422\
 Data File : PL074531.D
 Signal(s) : Signal #1: ECD1A.ch Signal #2: ECD2B.ch
 Acq On : 04 May 2022 20:08
 Operator : AR\AJ
 Sample : PEM
 Misc :
 ALS Vial : 3 Sample Multiplier: 1

Instrument :
 ECD_L
 ClientSampleId :

Integration File signal 1: autoint1.e
 Integration File signal 2: autoint2.e
 Quant Time: May 04 23:30:35 2022
 Quant Method : Z:\pestpcbsrv\HPCHEM1\ECD_L\methods\PL040822.M
 Quant Title : GC Extractables
 QLast Update : Thu Apr 14 09:29:23 2022
 Response via : Initial Calibration
 Integrator: ChemStation

Volume Inj. : 1 µl
 Signal #1 Phase : ZB-MR2 Signal #2 Phase: ZB-MR1
 Signal #1 Info : 30M x 0.32mm x0.2 Signal #2 Info : 30M x 0.32mm x0.5µm

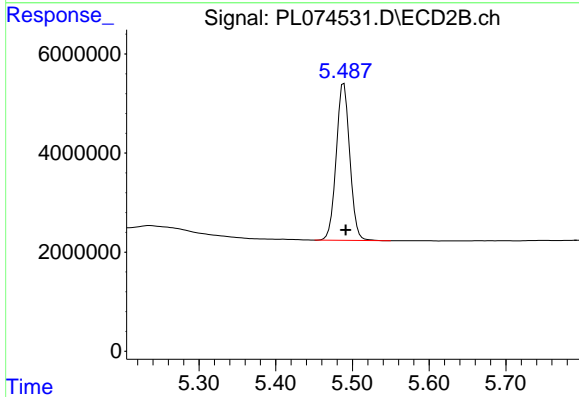




#1 Tetrachloro-m-xylene

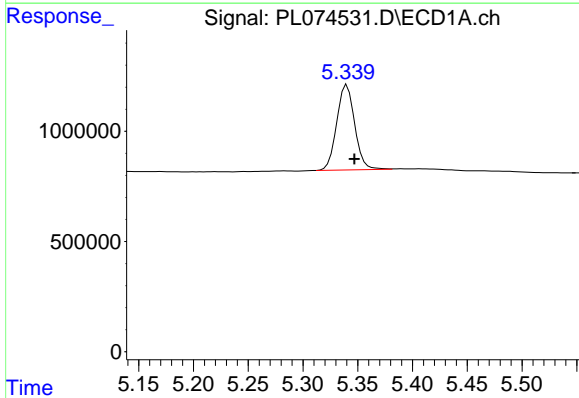
R.T.: 4.633 min
 Delta R.T.: -0.006 min
 Response: 7175404
 Conc: 22.21 ng/ml

Instrument :
 ECD_L
 ClientSampleId :



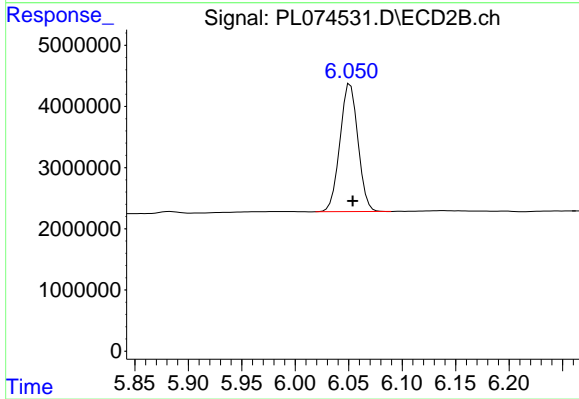
#1 Tetrachloro-m-xylene

R.T.: 5.489 min
 Delta R.T.: -0.003 min
 Response: 38882968
 Conc: 21.81 ng/ml



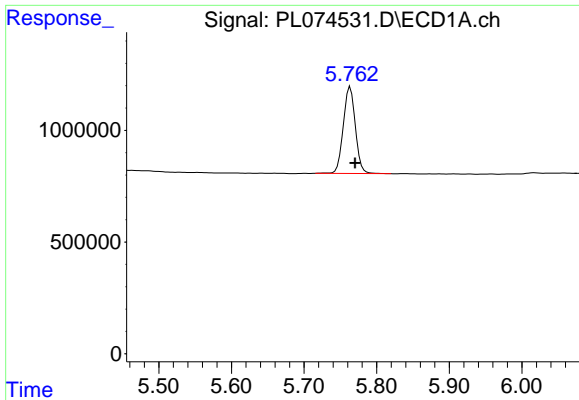
#2 alpha-BHC

R.T.: 5.340 min
 Delta R.T.: -0.007 min
 Response: 4409339
 Conc: 10.51 ng/ml



#2 alpha-BHC

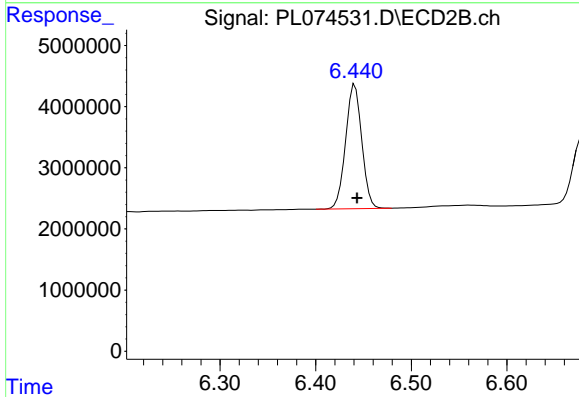
R.T.: 6.052 min
 Delta R.T.: -0.002 min
 Response: 24564638
 Conc: 9.76 ng/ml



#3 gamma-BHC (Lindane)

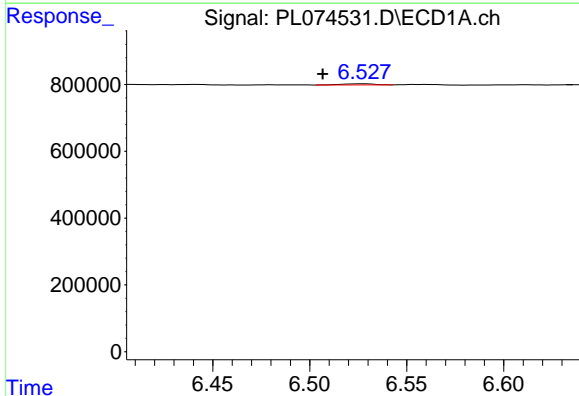
R.T.: 5.764 min
 Delta R.T.: -0.007 min
 Response: 4497496
 Conc: 10.72 ng/ml

Instrument :
 ECD_L
 ClientSampleId :



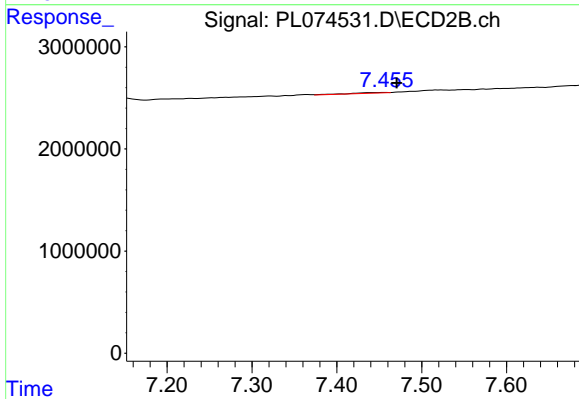
#3 gamma-BHC (Lindane)

R.T.: 6.441 min
 Delta R.T.: -0.002 min
 Response: 23950866
 Conc: 10.12 ng/ml



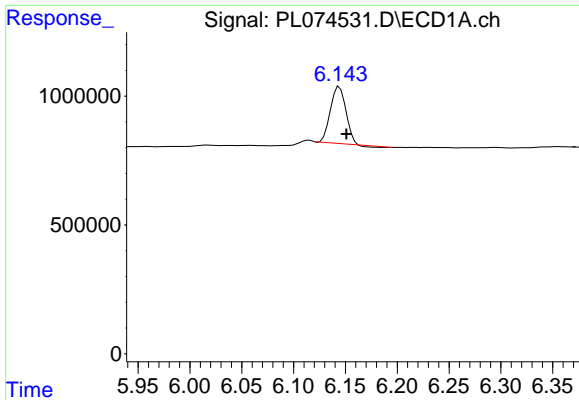
#5 Aldrin

R.T.: 6.528 min
 Delta R.T.: 0.021 min
 Response: 37487
 Conc: 0.09 ng/ml



#5 Aldrin

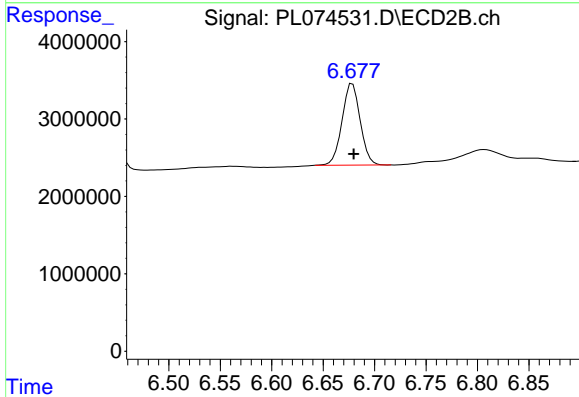
R.T.: 7.457 min
 Delta R.T.: -0.014 min
 Response: 179097
 Conc: 0.08 ng/ml



#6 beta-BHC

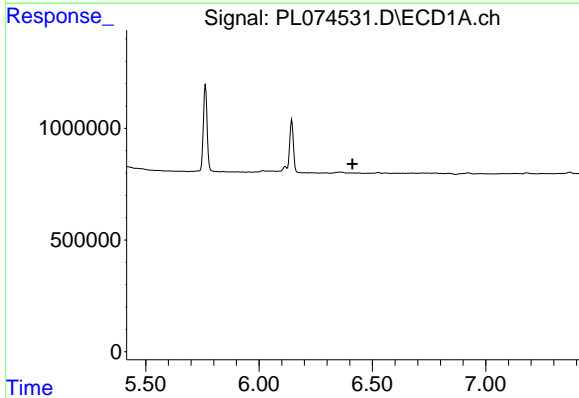
R.T.: 6.144 min
 Delta R.T.: -0.007 min
 Response: 2260386
 Conc: 11.06 ng/ml

Instrument :
 ECD_L
 ClientSampleId :



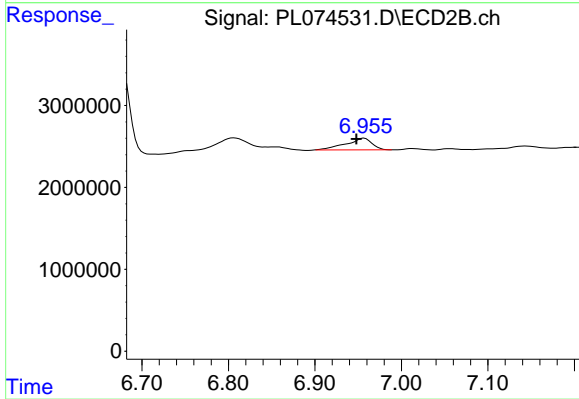
#6 beta-BHC

R.T.: 6.678 min
 Delta R.T.: -0.001 min
 Response: 12967534
 Conc: 11.51 ng/ml



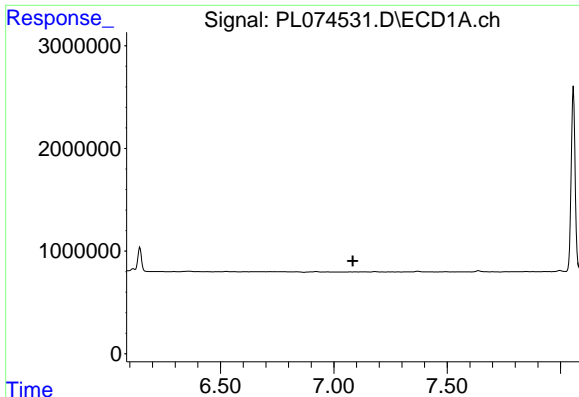
#7 delta-BHC

R.T.: 0.000 min
 Exp R.T. : 6.412 min
 Response: 0
 Conc: N.D.



#7 delta-BHC

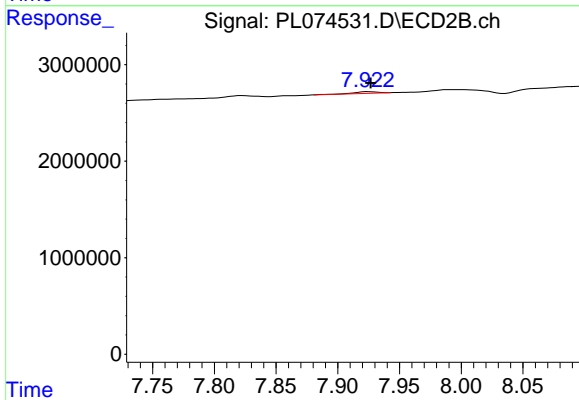
R.T.: 6.957 min
 Delta R.T.: 0.009 min
 Response: 3003627
 Conc: 1.23 ng/ml



#8 Heptachlor epoxide

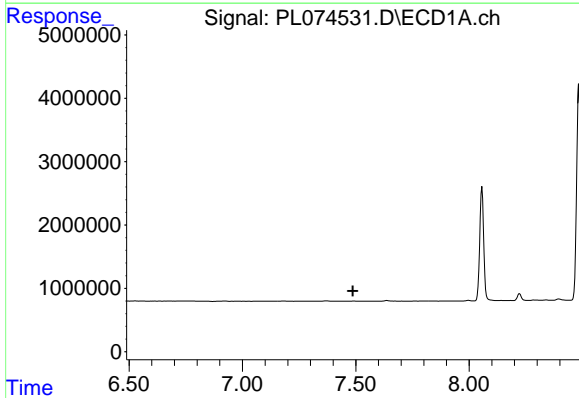
R.T.: 0.000 min
 Exp R.T. : 7.084 min
 Response: 0
 Conc: N.D.

Instrument :
 ECD_L
 ClientSampleId :



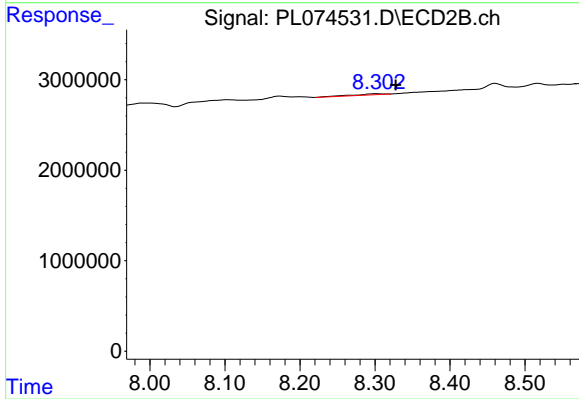
#8 Heptachlor epoxide

R.T.: 7.925 min
 Delta R.T.: -0.002 min
 Response: 225412
 Conc: 0.10 ng/ml



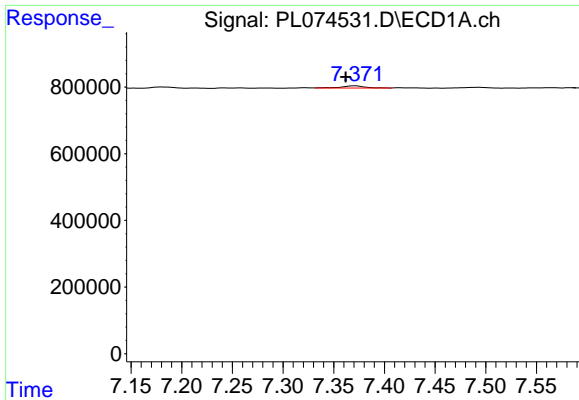
#9 Endosulfan I

R.T.: 0.000 min
 Exp R.T. : 7.487 min
 Response: 0
 Conc: N.D.



#9 Endosulfan I

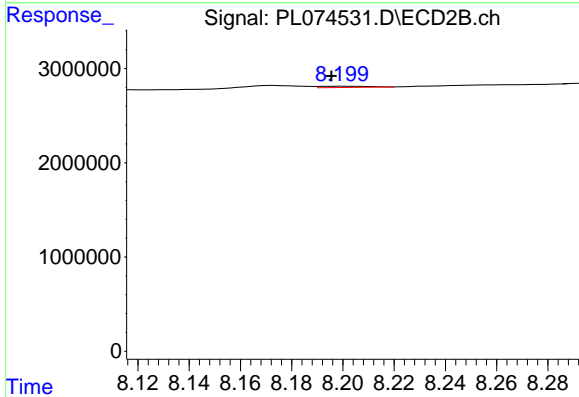
R.T.: 8.303 min
 Delta R.T.: -0.025 min
 Response: 358311
 Conc: 0.18 ng/ml



#10 gamma-Chlordane

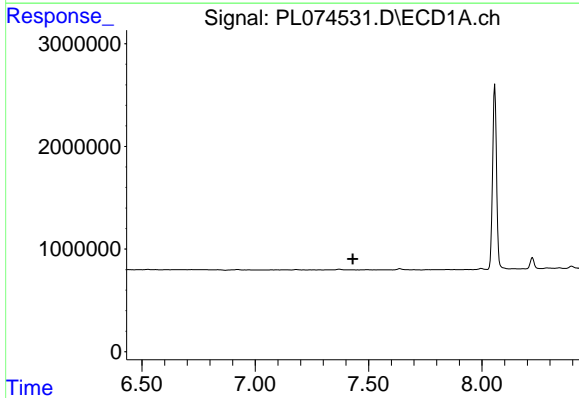
R.T.: 7.372 min
 Delta R.T.: 0.010 min
 Response: 109450
 Conc: 0.25 ng/ml

Instrument :
 ECD_L
 ClientSampleId :



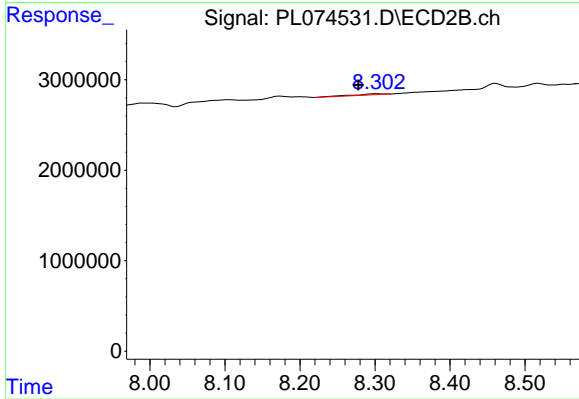
#10 gamma-Chlordane

R.T.: 8.200 min
 Delta R.T.: 0.005 min
 Response: 180145
 Conc: 0.08 ng/ml



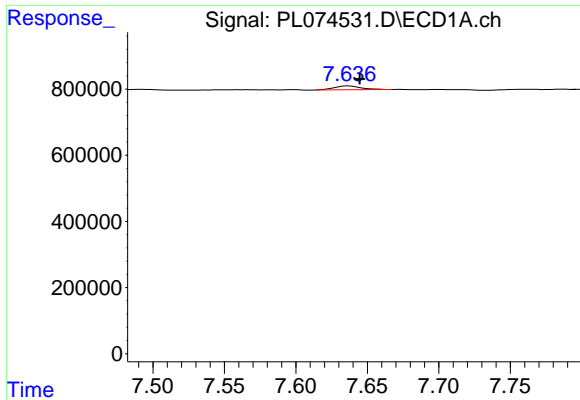
#11 alpha-Chlordane

R.T.: 0.000 min
 Exp R.T. : 7.431 min
 Response: 0
 Conc: N.D.



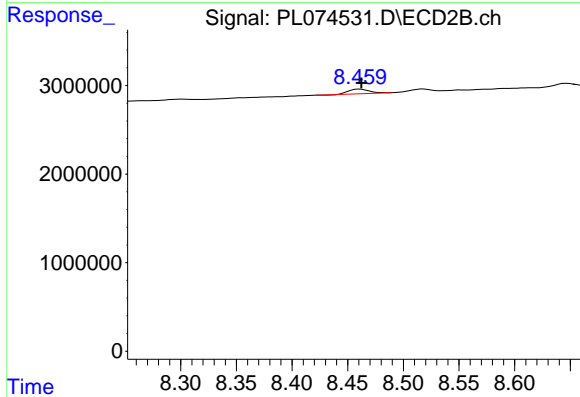
#11 alpha-Chlordane

R.T.: 8.303 min
 Delta R.T.: 0.025 min
 Response: 358311
 Conc: 0.17 ng/ml

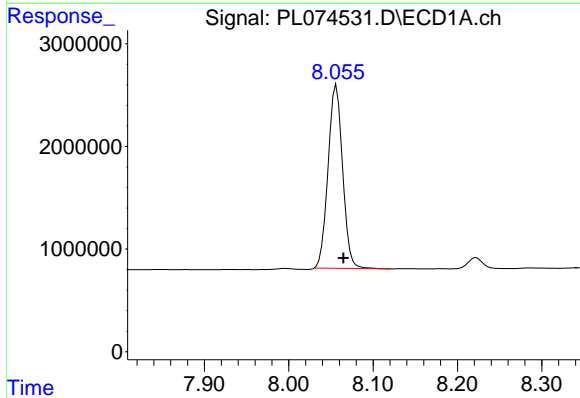


#12 4,4'-DDE
 R.T.: 7.637 min
 Delta R.T.: -0.008 min
 Response: 152106
 Conc: 0.42 ng/ml

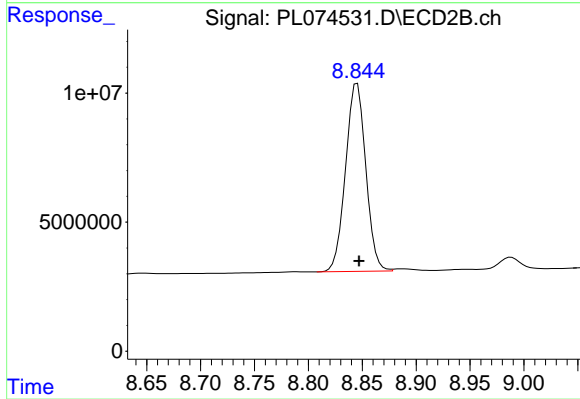
Instrument :
 ECD_L
 ClientSampleId :



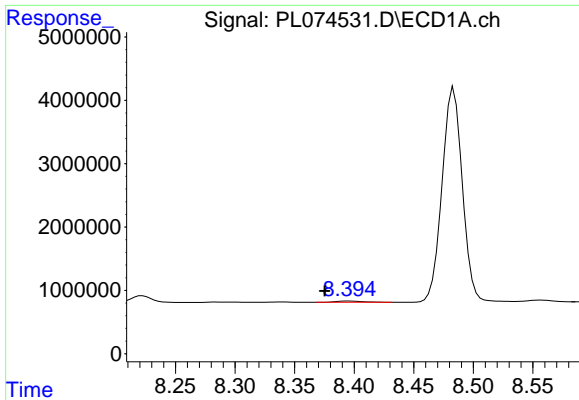
#12 4,4'-DDE
 R.T.: 8.461 min
 Delta R.T.: -0.002 min
 Response: 652441
 Conc: 0.33 ng/ml



#14 Endrin
 R.T.: 8.056 min
 Delta R.T.: -0.008 min
 Response: 21458707
 Conc: 52.82 ng/ml



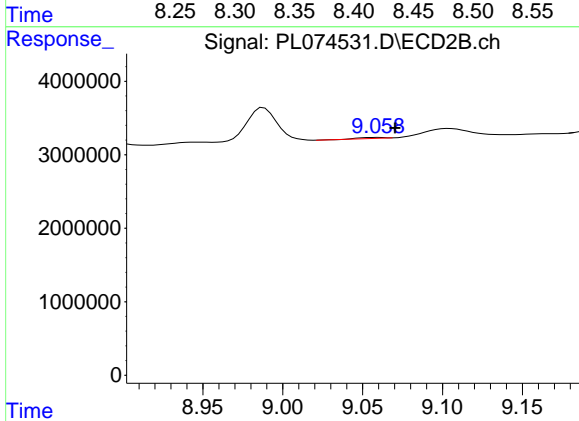
#14 Endrin
 R.T.: 8.845 min
 Delta R.T.: -0.002 min
 Response: 95310205
 Conc: 56.27 ng/ml



#15 Endosulfan II

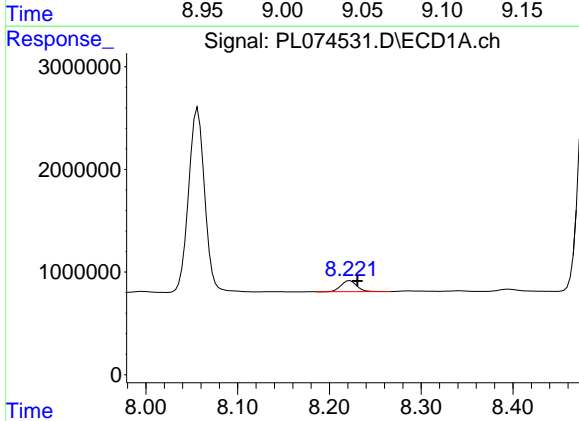
R.T.: 8.395 min
 Delta R.T.: 0.020 min
 Response: 306929
 Conc: 0.74 ng/ml

Instrument :
 ECD_L
 ClientSampleId :



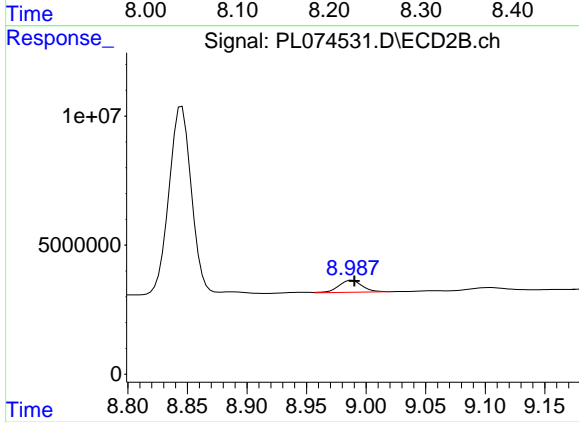
#15 Endosulfan II

R.T.: 9.059 min
 Delta R.T.: -0.011 min
 Response: 116308
 Conc: 0.07 ng/ml



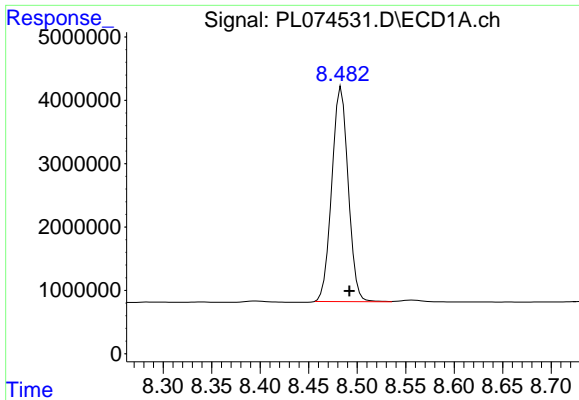
#16 4,4'-DDD

R.T.: 8.222 min
 Delta R.T.: -0.008 min
 Response: 1260297
 Conc: 3.90 ng/ml



#16 4,4'-DDD

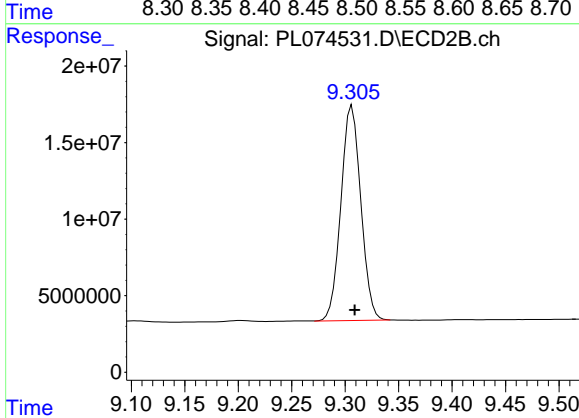
R.T.: 8.988 min
 Delta R.T.: -0.002 min
 Response: 6232670
 Conc: 4.05 ng/ml



#17 4,4'-DDT

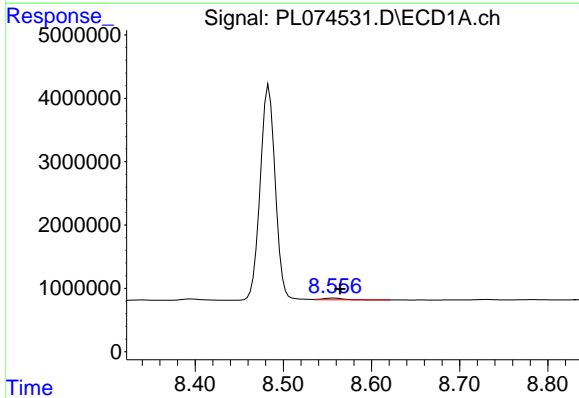
R.T.: 8.484 min
 Delta R.T.: -0.008 min
 Response: 39776017
 Conc: 107.61 ng/ml

Instrument :
 ECD_L
 ClientSampleId :



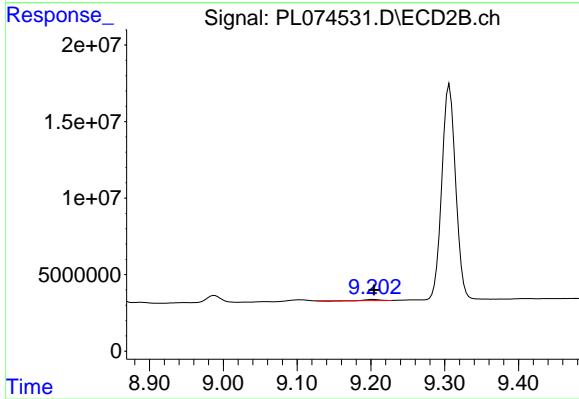
#17 4,4'-DDT

R.T.: 9.306 min
 Delta R.T.: -0.002 min
 Response: 182303626
 Conc: 102.84 ng/ml



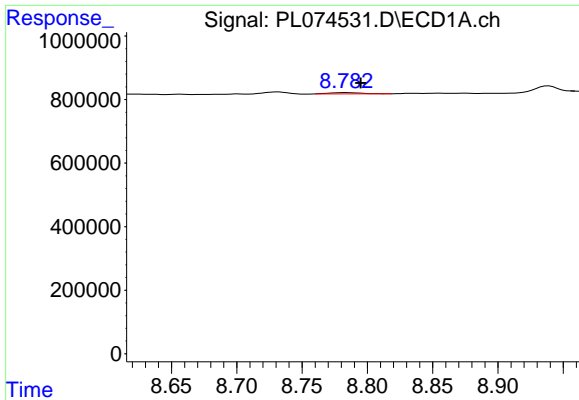
#18 Endrin aldehyde

R.T.: 8.557 min
 Delta R.T.: -0.007 min
 Response: 398369
 Conc: 1.23 ng/ml



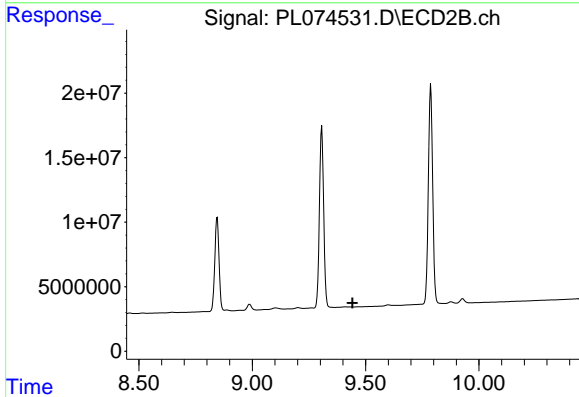
#18 Endrin aldehyde

R.T.: 9.203 min
 Delta R.T.: -0.001 min
 Response: 435851
 Conc: 0.34 ng/ml

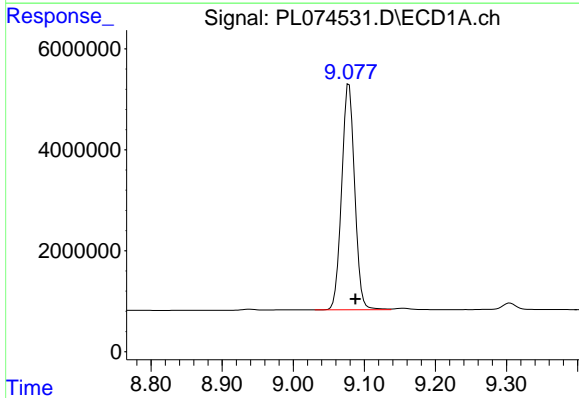


#19 Endosulfan Sulfate
 R.T.: 8.783 min
 Delta R.T.: -0.012 min
 Response: 60602
 Conc: 0.14 ng/ml

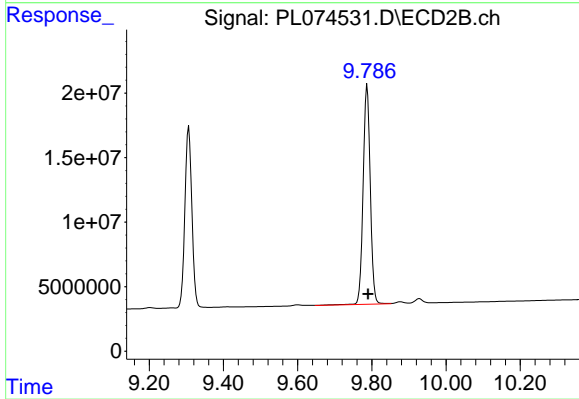
Instrument :
 ECD_L
 ClientSampleId :



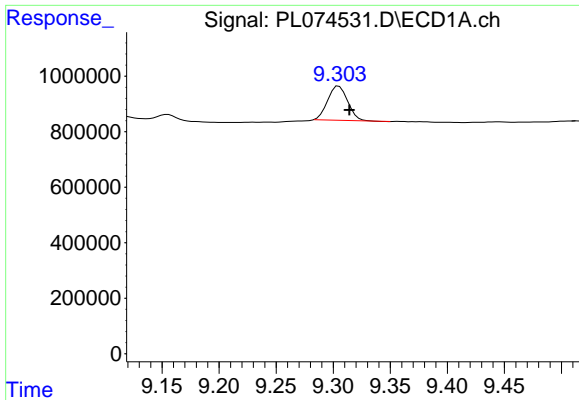
#19 Endosulfan Sulfate
 R.T.: 0.000 min
 Exp R.T. : 9.442 min
 Response: 0
 Conc: N.D.



#20 Methoxychlor
 R.T.: 9.079 min
 Delta R.T.: -0.009 min
 Response: 56931359
 Conc: 229.31 ng/ml



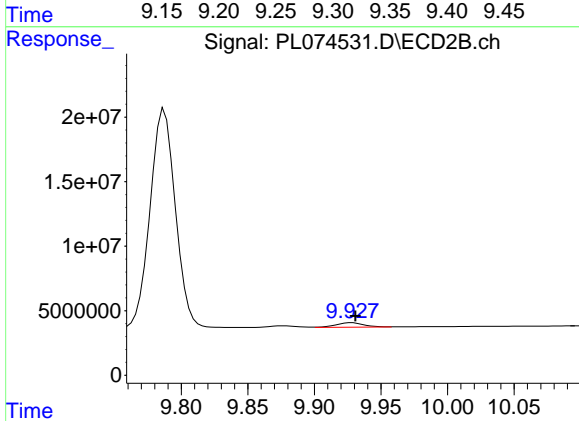
#20 Methoxychlor
 R.T.: 9.787 min
 Delta R.T.: -0.002 min
 Response: 227354480
 Conc: 236.37 ng/ml



#21 Endrin ketone

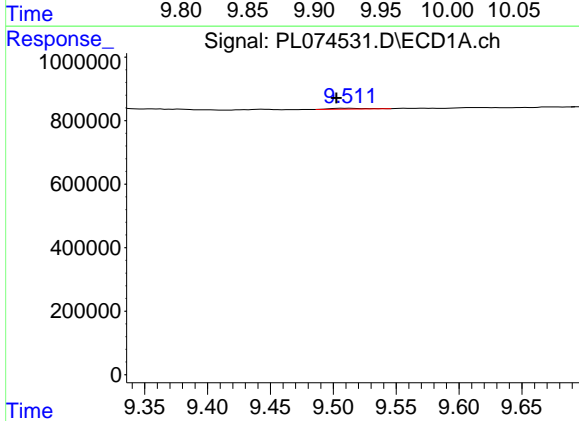
R.T.: 9.305 min
 Delta R.T.: -0.009 min
 Response: 1514192
 Conc: 3.10 ng/ml

Instrument :
 ECD_L
 ClientSampleId :



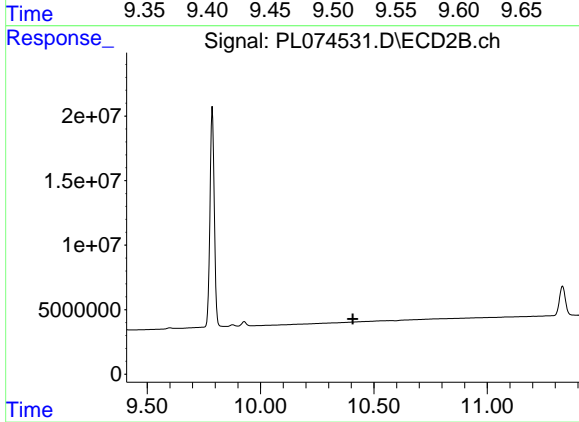
#21 Endrin ketone

R.T.: 9.928 min
 Delta R.T.: -0.003 min
 Response: 4907945
 Conc: 2.84 ng/ml



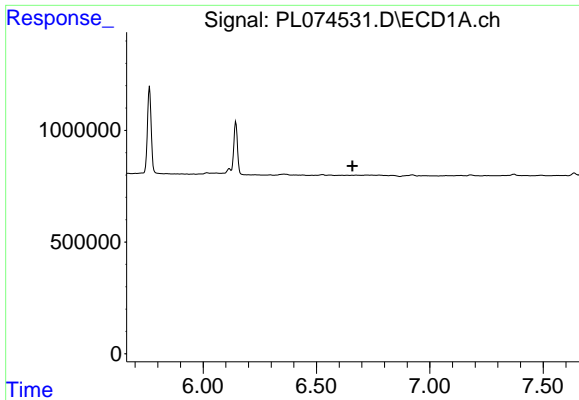
#22 Mirex

R.T.: 9.512 min
 Delta R.T.: 0.009 min
 Response: 48458
 Conc: 0.10 ng/ml



#22 Mirex

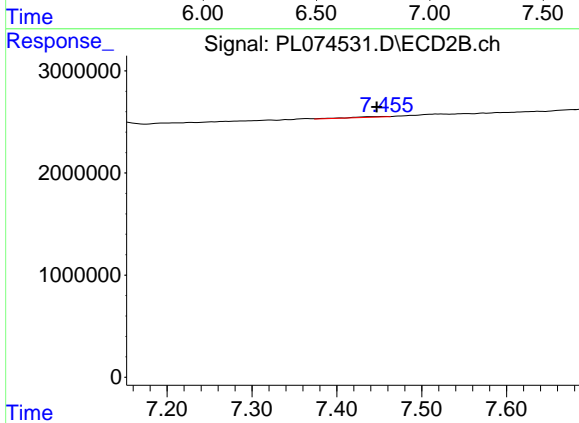
R.T.: 0.000 min
 Exp R.T. : 10.407 min
 Response: 0
 Conc: N.D.



#24 Chlordane-2

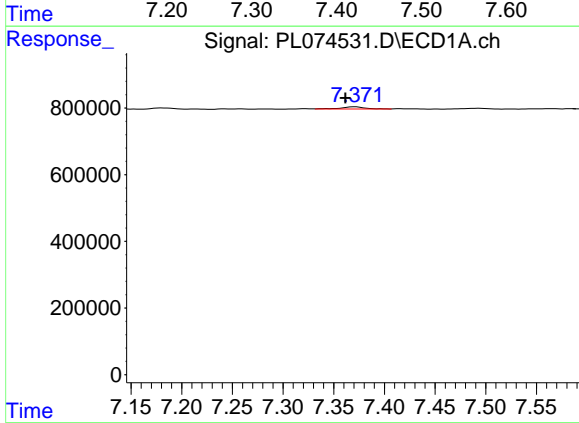
R.T.: 0.000 min
 Exp R.T.: 6.659 min
 Response: 0
 Conc: N.D.

Instrument :
 ECD_L
 ClientSampleId :



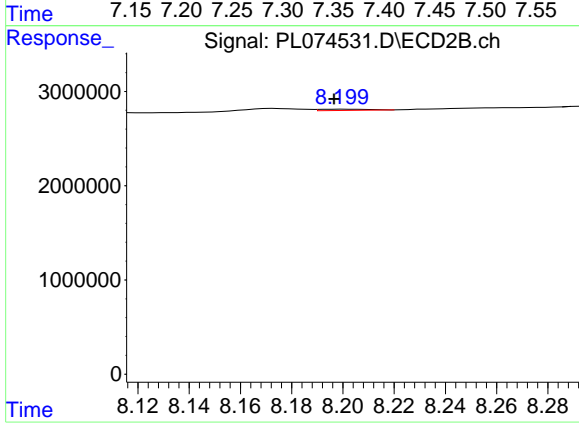
#24 Chlordane-2

R.T.: 7.457 min
 Delta R.T.: 0.010 min
 Response: 179097
 Conc: 2.17 ng/ml



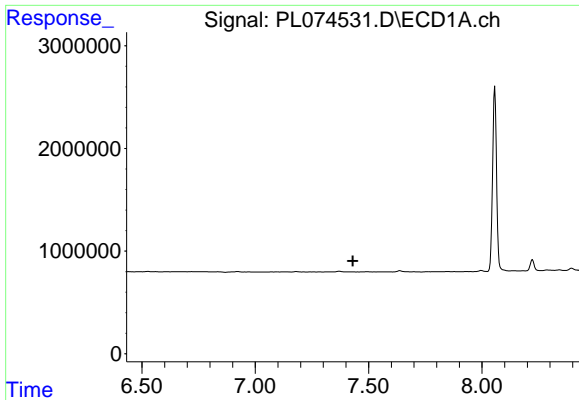
#25 Chlordane-3

R.T.: 7.372 min
 Delta R.T.: 0.010 min
 Response: 109450
 Conc: 2.53 ng/ml



#25 Chlordane-3

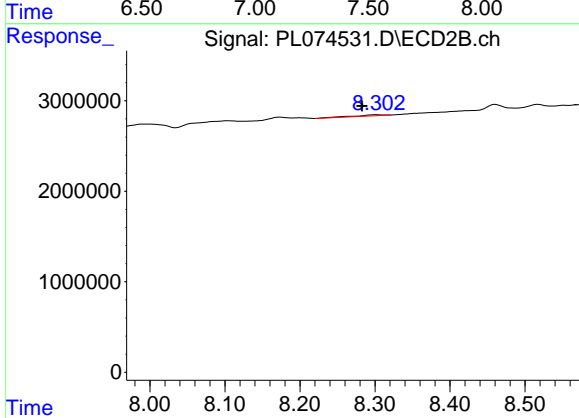
R.T.: 8.200 min
 Delta R.T.: 0.004 min
 Response: 180145
 Conc: 0.53 ng/ml



#26 Chlordane-4

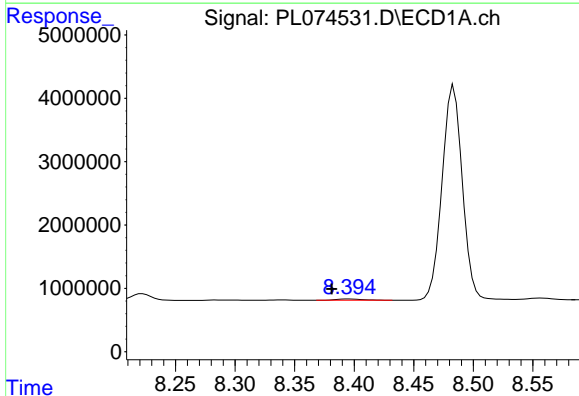
R.T.: 0.000 min
 Exp R.T.: 7.430 min
 Response: 0
 Conc: N.D.

Instrument :
 ECD_L
 ClientSampleId :



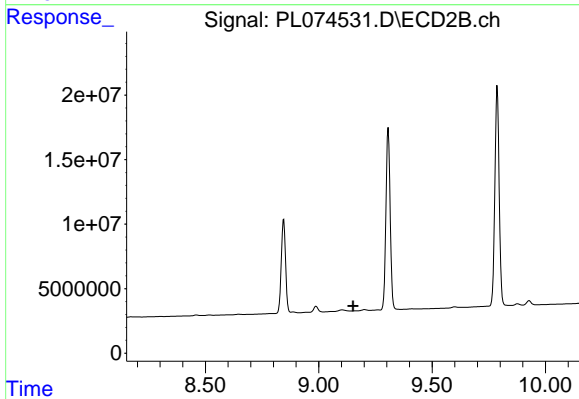
#26 Chlordane-4

R.T.: 8.303 min
 Delta R.T.: 0.020 min
 Response: 358311
 Conc: 0.90 ng/ml



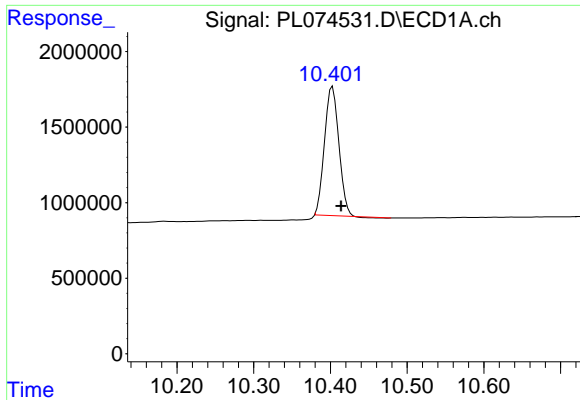
#27 Chlordane-5

R.T.: 8.395 min
 Delta R.T.: 0.014 min
 Response: 306929
 Conc: 17.60 ng/ml



#27 Chlordane-5

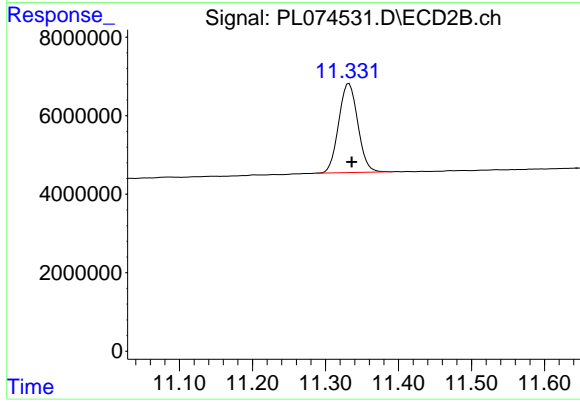
R.T.: 0.000 min
 Exp R.T.: 9.152 min
 Response: 0
 Conc: N.D.



#28 Decachlorobiphenyl

R.T.: 10.403 min
Delta R.T.: -0.011 min
Response: 11032367
Conc: 21.21 ng/ml

Instrument :
ECD_L
ClientSampleId :



#28 Decachlorobiphenyl

R.T.: 11.332 min
Delta R.T.: -0.004 min
Response: 41288232
Conc: 23.38 ng/ml