

Data Path : Z:\pestpcbsrv\HPCHEM1\ECD_L\Data\PL050423\
 Data File : PL082513.D
 Signal(s) : Signal #1: ECD1A.ch Signal #2: ECD2B.ch
 Acq On : 04 May 2023 16:49
 Operator : AR\AJ
 Sample : 02588-06
 Misc :
 ALS Vial : 27 Sample Multiplier: 1

Instrument :
 ECD_L
 ClientSampleId :

Integration File signal 1: autoint1.e
 Integration File signal 2: autoint2.e
 Quant Time: May 04 21:19:46 2023
 Quant Method : Z:\pestpcbsrv\HPCHEM1\ECD_L\methods\PL042023.M
 Quant Title : GC Extractables
 QLast Update : Fri Apr 21 03:12:31 2023
 Response via : Initial Calibration
 Integrator: ChemStation

Volume Inj. : 1 µl
 Signal #1 Phase : ZB-MR2 Signal #2 Phase: ZB-MR1
 Signal #1 Info : 30M x 0.32mm x0.2 Signal #2 Info : 30M x 0.32mm x0.5µm

	Compound	RT#1	RT#2	Resp#1	Resp#2	ng/ml	ng/ml

System Monitoring Compounds							
1)	SA Tetrachlo...	3.320	2.643	37297930	33045744	13.963	14.264
28)	SA Decachlor...	8.739	7.754	27451030	30307809	14.379	13.278
Target Compounds							
2)	A alpha-BHC	0.000	3.127f	0	120853	N.D.	0.036 #
3)	MA gamma-BHC...	0.000	3.476	0	1739328	N.D.	0.541 #
4)	MA Heptachlor	0.000	3.817	0	1190595	N.D.	0.348 #
5)	MB Aldrin	5.037f	4.096	4315490	2097507	1.309	0.666 #
6)	B beta-BHC	4.305	3.772	917926	413129	0.538	0.303 #
7)	B delta-BHC	0.000	3.997	0	1336669	N.D.	0.436 #
8)	B Heptachlo...	5.436	4.576	3314538	834906	1.087	0.290 #
9)	A Endosulfan I	5.810	4.979f	616026	2616023	0.222	0.980 #
10)	B gamma-Chl...	5.717f	4.856f	3477971	3912350	1.157	1.348
11)	B alpha-Chl...	5.772	4.883	2939048	3870593	0.985	1.333 #
12)	B 4,4'-DDE	5.950	5.079	3407620	2572782	1.341	1.119
13)	MA Dieldrin	6.098	5.215	346412	4188627	0.126	1.551 #
14)	MA Endrin	6.326	5.493	1624301	-404621	0.670	N.D. #
15)	B Endosulfa...	6.540	5.767f	462365	199529	0.190	0.089 #
16)	A 4,4'-DDD	6.470	5.635	5229306	1279141	2.580	0.684 #
17)	MA 4,4'-DDT	6.779	5.878	851408	4376194	0.372	2.071 #
18)	B Endrin al...	6.700f	5.975	644627	830632	0.342	0.444 #
19)	B Endosulfa...	6.895f	6.176	761919	1814033	0.321	0.771 #
21)	B Endrin ke...	7.365f	6.715f	754582	109809	0.315	0.043 #
22)	Mirex	0.000	6.855	0	228609	N.D.	0.099 #
23)	Chlordane-1	0.000	3.645	0	1735329	N.D.	19.567 #
25)	Chlordane-3	5.717f	4.856f	3477971	3912350	8.056	13.771 #
26)	Chlordane-4	5.772	4.883	2939048	3870593	5.653	12.971 #
27)	Chlordane-5	0.000	5.767f	0	199529	N.D.	2.021 #

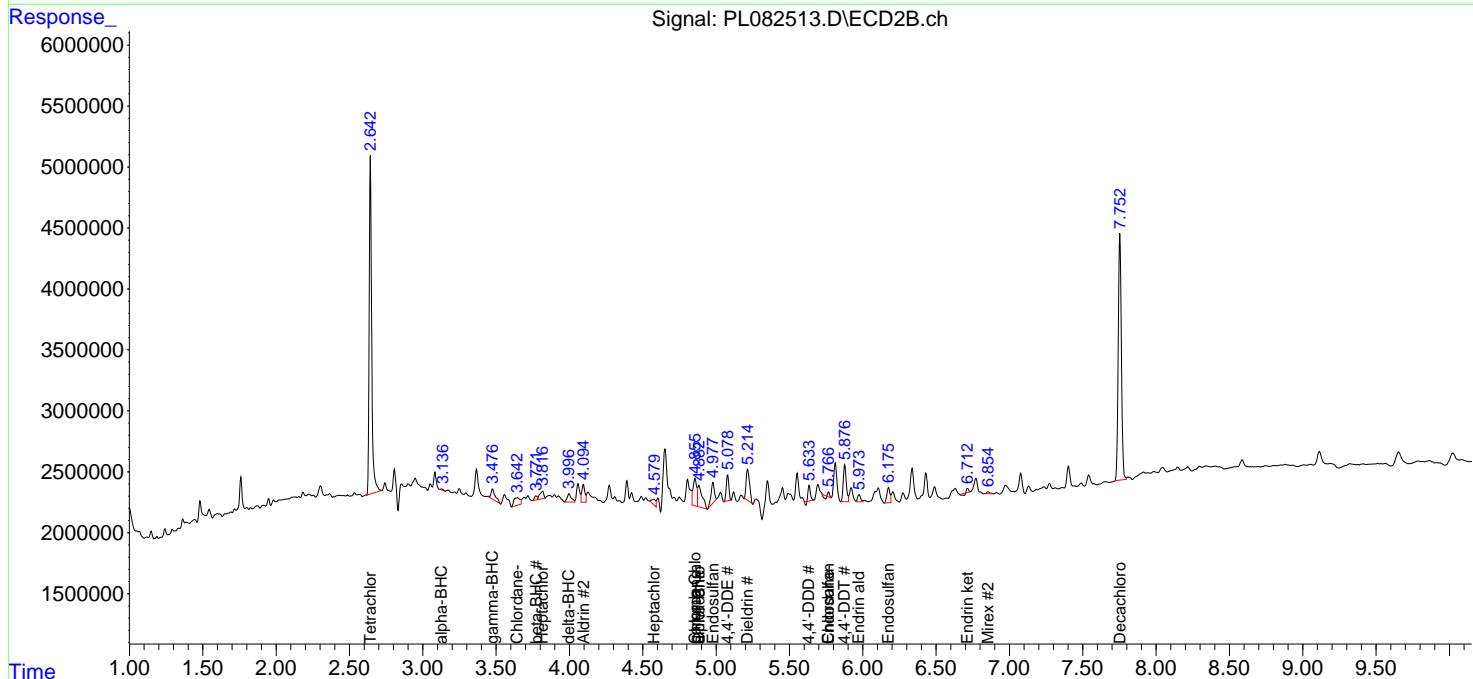
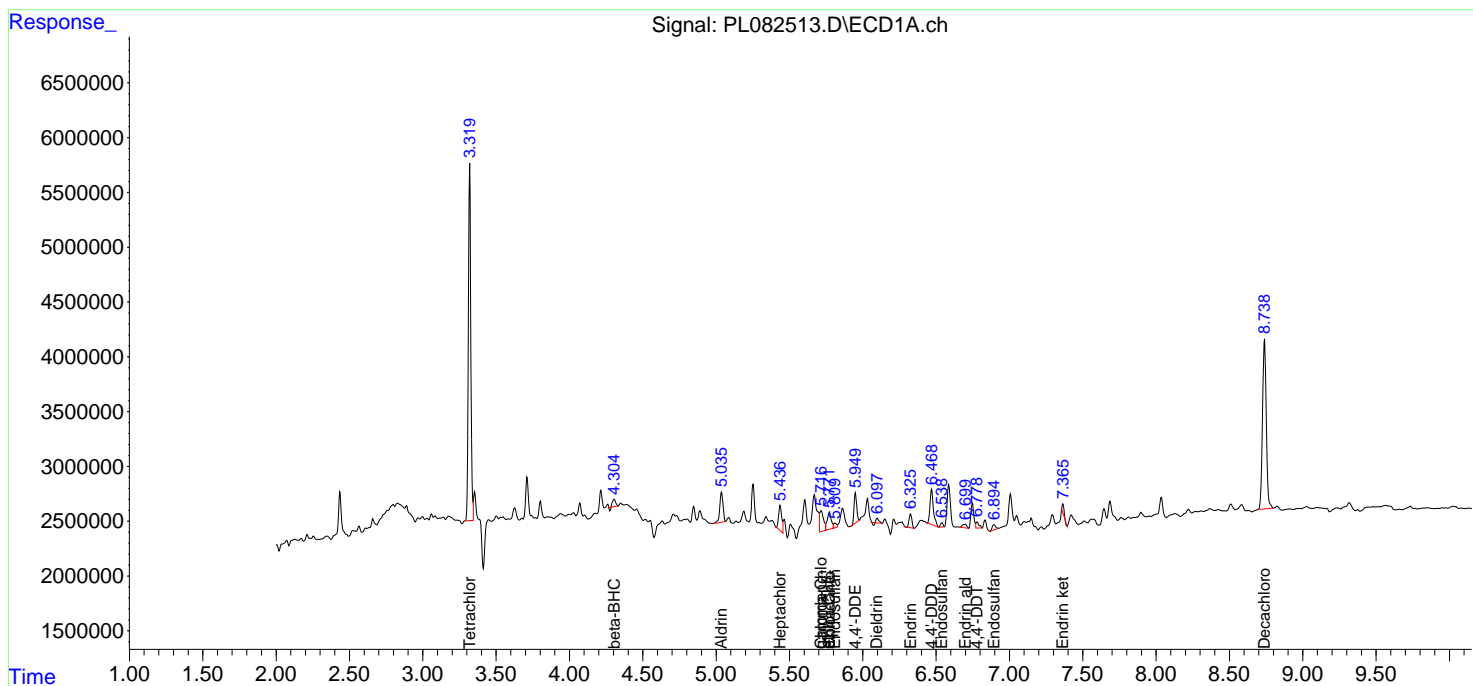
(f)=RT Delta > 1/2 Window (#)=Amounts differ by > 25% (m)=manual int.

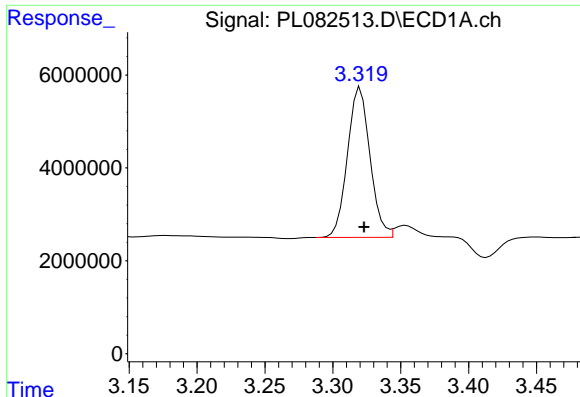
Data Path : Z:\pestpcbsrv\HPCHEM1\ECD_L\Data\PL050423\
 Data File : PL082513.D
 Signal(s) : Signal #1: ECD1A.ch Signal #2: ECD2B.ch
 Acq On : 04 May 2023 16:49
 Operator : AR\AJ
 Sample : 02588-06
 Misc :
 ALS Vial : 27 Sample Multiplier: 1

Instrument :
 ECD_L
 ClientSampleId :

Integration File signal 1: autoint1.e
 Integration File signal 2: autoint2.e
 Quant Time: May 04 21:19:46 2023
 Quant Method : Z:\pestpcbsrv\HPCHEM1\ECD_L\methods\PL042023.M
 Quant Title : GC Extractables
 QLast Update : Fri Apr 21 03:12:31 2023
 Response via : Initial Calibration
 Integrator: ChemStation

Volume Inj. : 1 µl
 Signal #1 Phase : ZB-MR2 Signal #2 Phase: ZB-MR1
 Signal #1 Info : 30M x 0.32mm x0.2 Signal #2 Info : 30M x 0.32mm x0.5µm

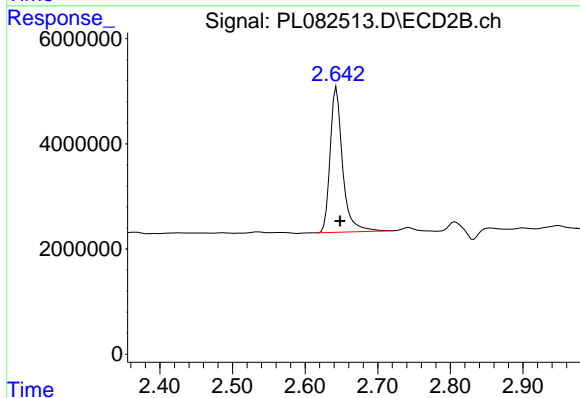




#1 Tetrachloro-m-xylene

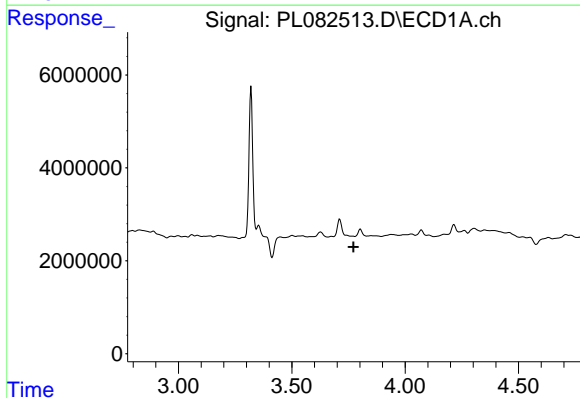
R.T.: 3.320 min
 Delta R.T.: -0.003 min
 Response: 37297930
 Conc: 13.96 ng/ml

Instrument :
 ECD_L
 ClientSampleId :



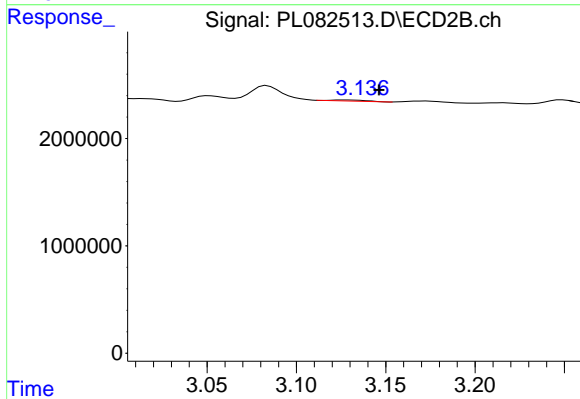
#1 Tetrachloro-m-xylene

R.T.: 2.643 min
 Delta R.T.: -0.005 min
 Response: 33045744
 Conc: 14.26 ng/ml



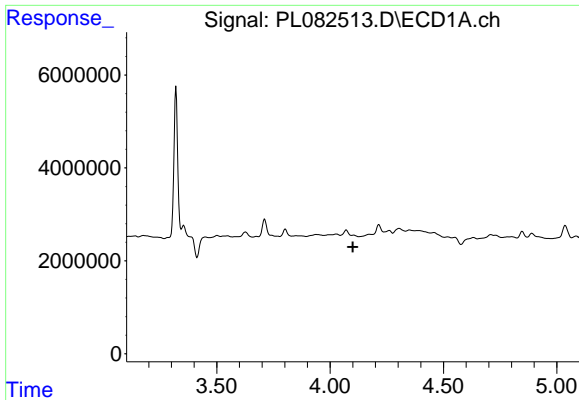
#2 alpha-BHC

R.T.: 0.000 min
 Exp R.T. : 3.772 min
 Response: 0
 Conc: N.D.



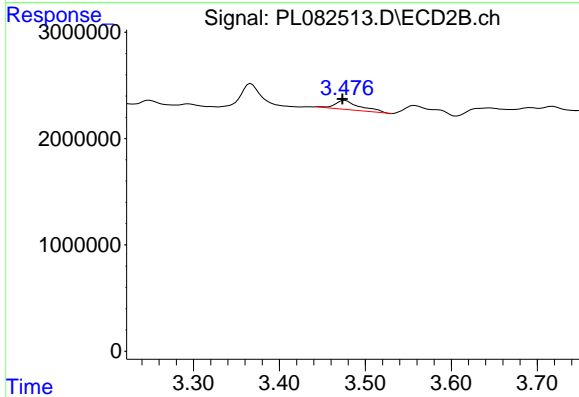
#2 alpha-BHC

R.T.: 3.127 min
 Delta R.T.: -0.019 min
 Response: 120853
 Conc: 0.04 ng/ml

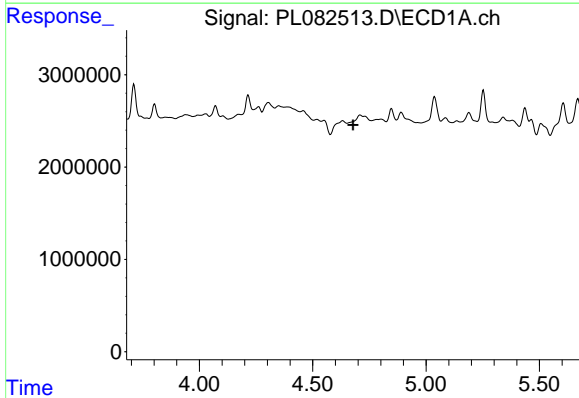


#3 gamma-BHC (Lindane)
 R.T.: 0.000 min
 Exp R.T.: 4.100 min
 Response: 0
 Conc: N.D.

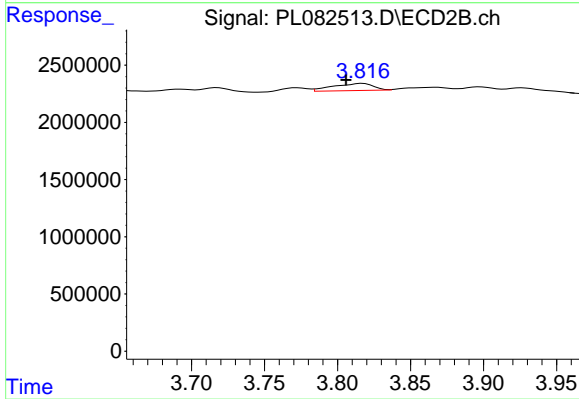
Instrument :
 ECD_L
 ClientSampleId :



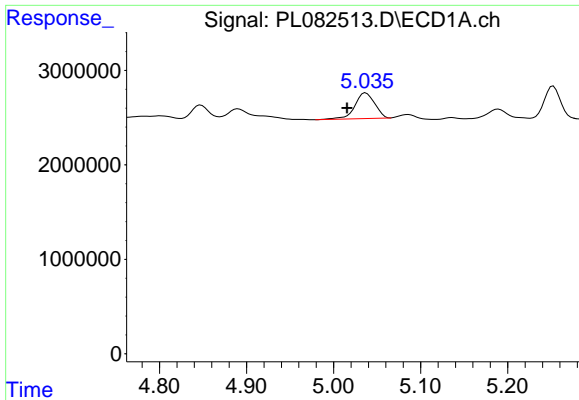
#3 gamma-BHC (Lindane)
 R.T.: 3.476 min
 Delta R.T.: 0.003 min
 Response: 1739328
 Conc: 0.54 ng/ml



#4 Heptachlor
 R.T.: 0.000 min
 Exp R.T.: 4.679 min
 Response: 0
 Conc: N.D.

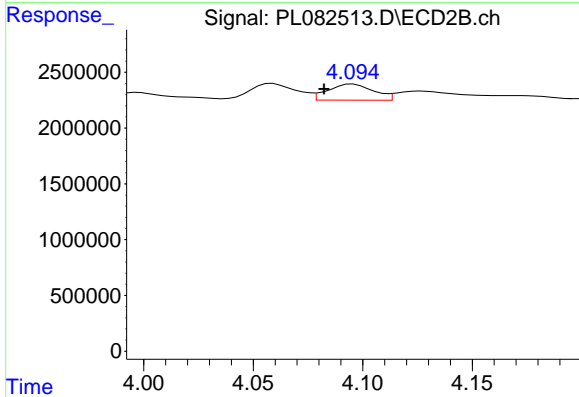


#4 Heptachlor
 R.T.: 3.817 min
 Delta R.T.: 0.011 min
 Response: 1190595
 Conc: 0.35 ng/ml

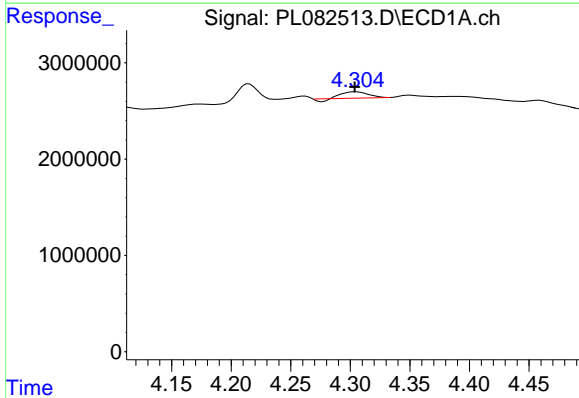


#5 Aldrin
 R.T.: 5.037 min
 Delta R.T.: 0.022 min
 Response: 4315490
 Conc: 1.31 ng/ml

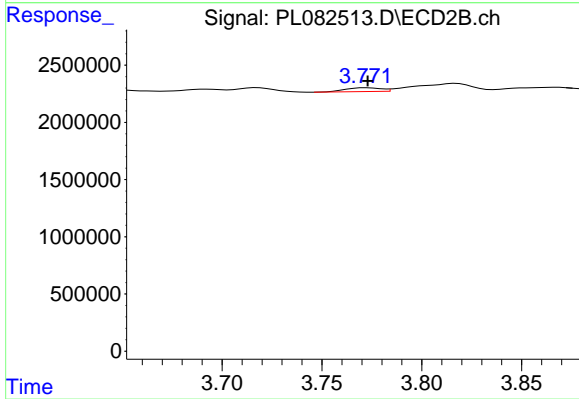
Instrument :
 ECD_L
 ClientSampleId :



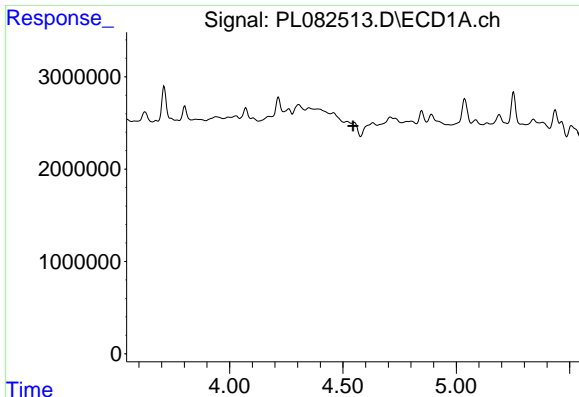
#5 Aldrin
 R.T.: 4.096 min
 Delta R.T.: 0.013 min
 Response: 2097507
 Conc: 0.67 ng/ml



#6 beta-BHC
 R.T.: 4.305 min
 Delta R.T.: 0.001 min
 Response: 917926
 Conc: 0.54 ng/ml



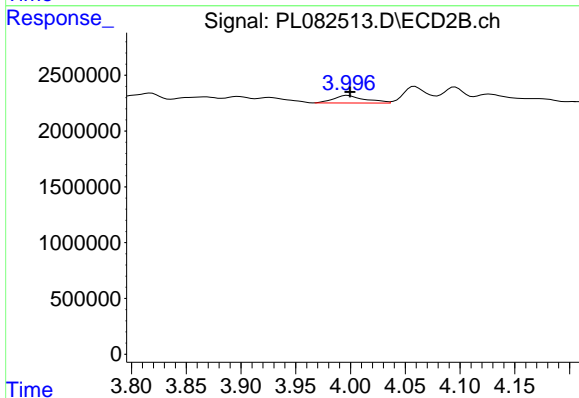
#6 beta-BHC
 R.T.: 3.772 min
 Delta R.T.: 0.000 min
 Response: 413129
 Conc: 0.30 ng/ml



#7 delta-BHC

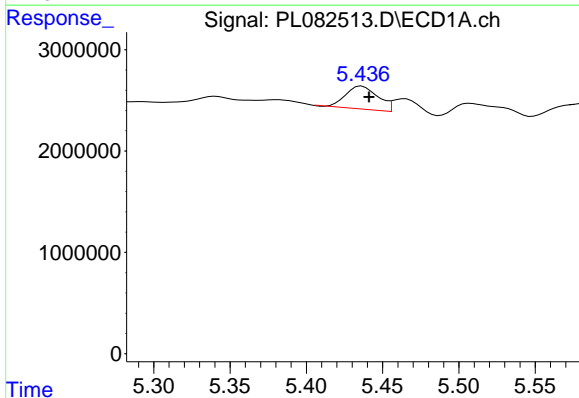
R.T.: 0.000 min
 Exp R.T.: 4.545 min
 Response: 0
 Conc: N.D.

Instrument :
 ECD_L
 ClientSampleId :



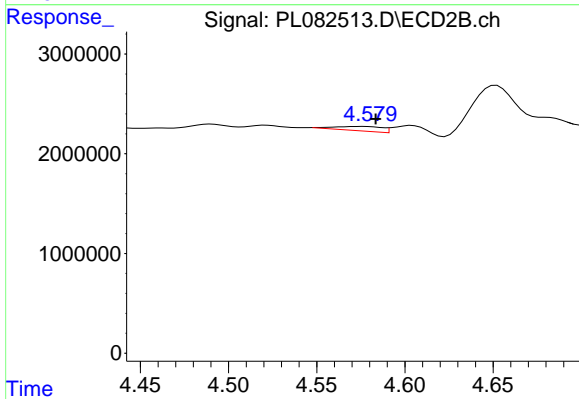
#7 delta-BHC

R.T.: 3.997 min
 Delta R.T.: -0.002 min
 Response: 1336669
 Conc: 0.44 ng/ml



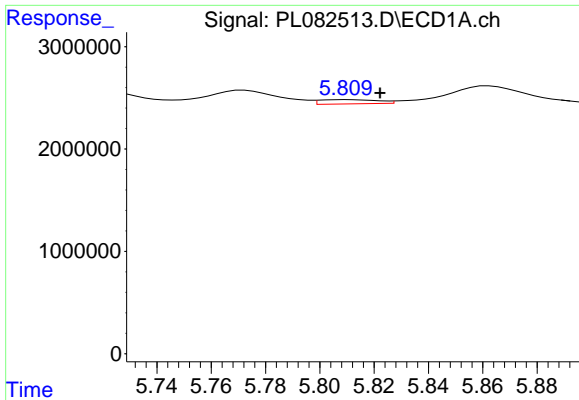
#8 Heptachlor epoxide

R.T.: 5.436 min
 Delta R.T.: -0.005 min
 Response: 3314538
 Conc: 1.09 ng/ml



#8 Heptachlor epoxide

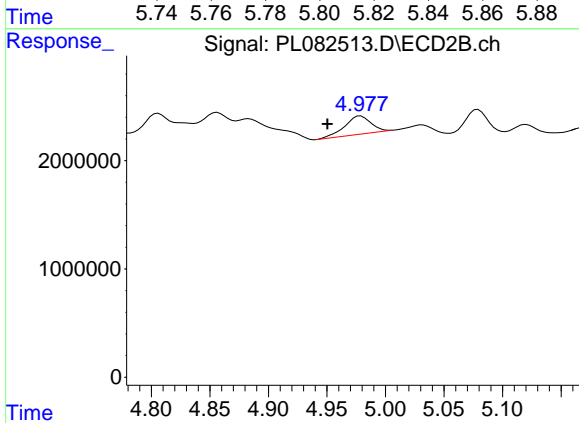
R.T.: 4.576 min
 Delta R.T.: -0.007 min
 Response: 834906
 Conc: 0.29 ng/ml



#9 Endosulfan I

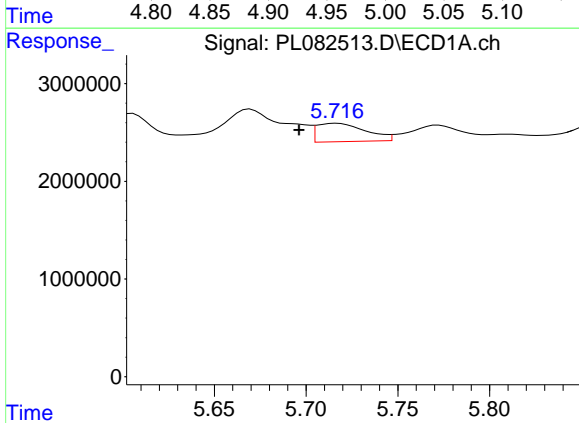
R.T.: 5.810 min
 Delta R.T.: -0.012 min
 Response: 616026
 Conc: 0.22 ng/ml

Instrument :
 ECD_L
 ClientSampleId :



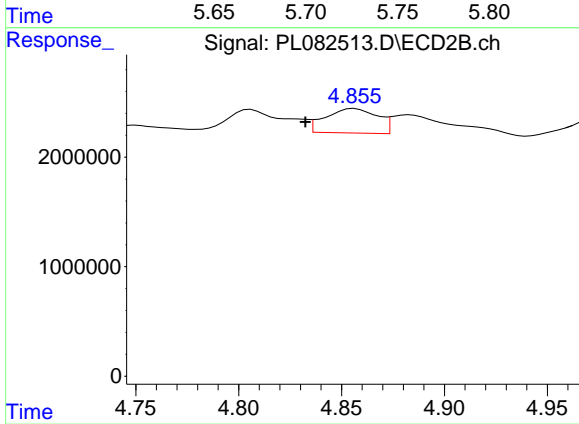
#9 Endosulfan I

R.T.: 4.979 min
 Delta R.T.: 0.028 min
 Response: 2616023
 Conc: 0.98 ng/ml



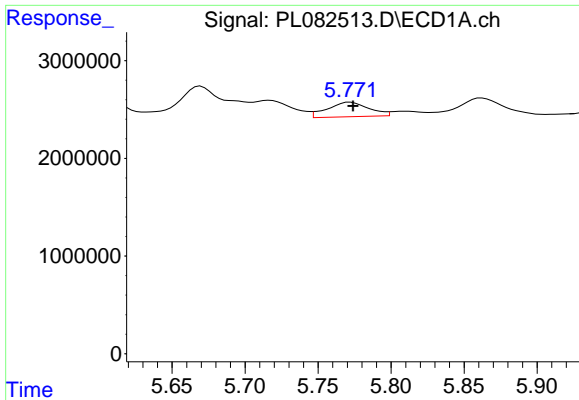
#10 gamma-Chlordane

R.T.: 5.717 min
 Delta R.T.: 0.021 min
 Response: 3477971
 Conc: 1.16 ng/ml



#10 gamma-Chlordane

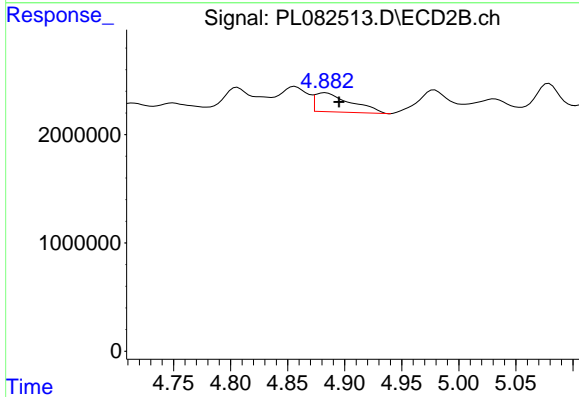
R.T.: 4.856 min
 Delta R.T.: 0.024 min
 Response: 3912350
 Conc: 1.35 ng/ml



#11 alpha-Chlordane

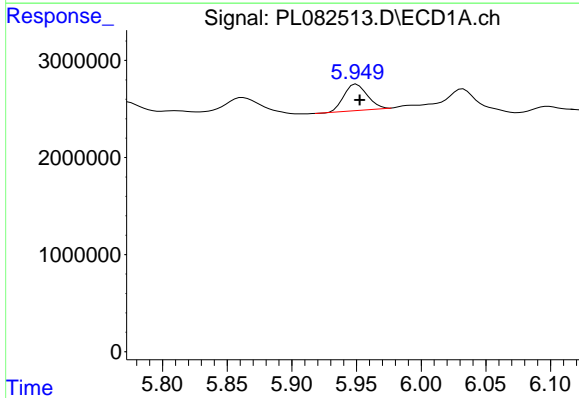
R.T.: 5.772 min
 Delta R.T.: -0.002 min
 Response: 2939048
 Conc: 0.98 ng/ml

Instrument :
 ECD_L
 ClientSampleId :



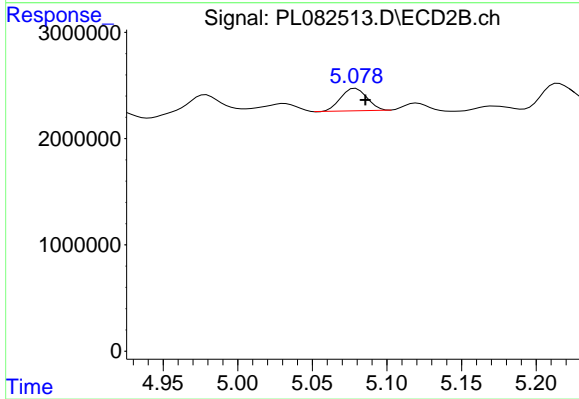
#11 alpha-Chlordane

R.T.: 4.883 min
 Delta R.T.: -0.012 min
 Response: 3870593
 Conc: 1.33 ng/ml



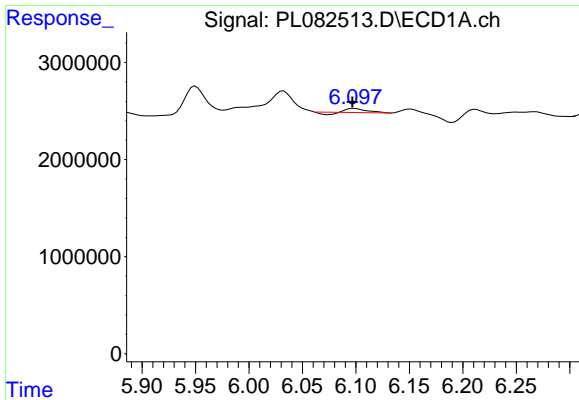
#12 4,4'-DDE

R.T.: 5.950 min
 Delta R.T.: -0.002 min
 Response: 3407620
 Conc: 1.34 ng/ml



#12 4,4'-DDE

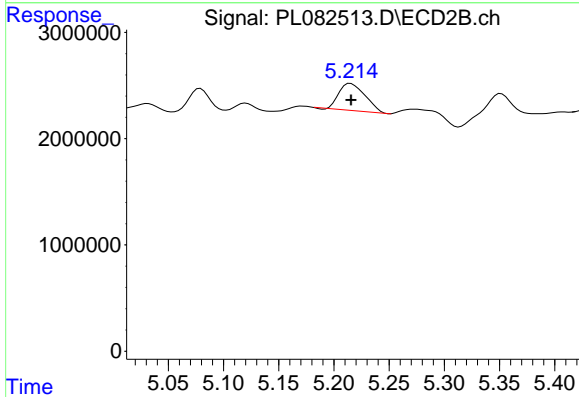
R.T.: 5.079 min
 Delta R.T.: -0.006 min
 Response: 2572782
 Conc: 1.12 ng/ml



#13 Dieldrin

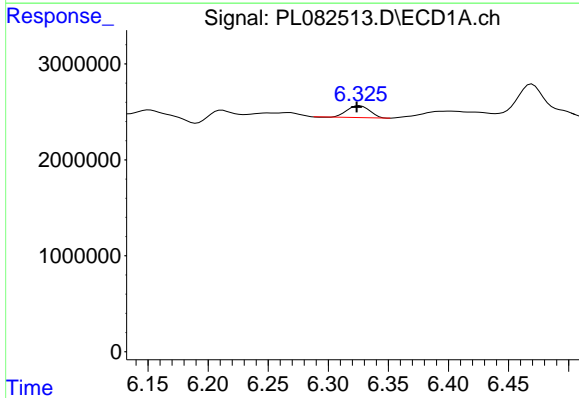
R.T.: 6.098 min
 Delta R.T.: 0.002 min
 Response: 346412
 Conc: 0.13 ng/ml

Instrument :
 ECD_L
 ClientSampleId :



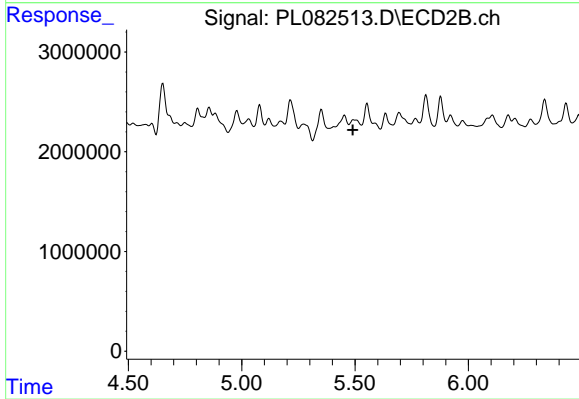
#13 Dieldrin

R.T.: 5.215 min
 Delta R.T.: 0.000 min
 Response: 4188627
 Conc: 1.55 ng/ml



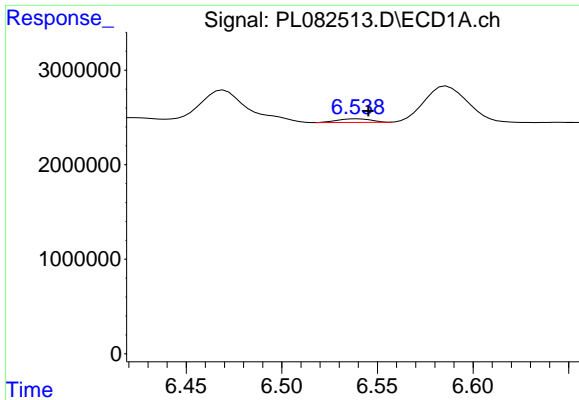
#14 Endrin

R.T.: 6.326 min
 Delta R.T.: 0.003 min
 Response: 1624301
 Conc: 0.67 ng/ml



#14 Endrin

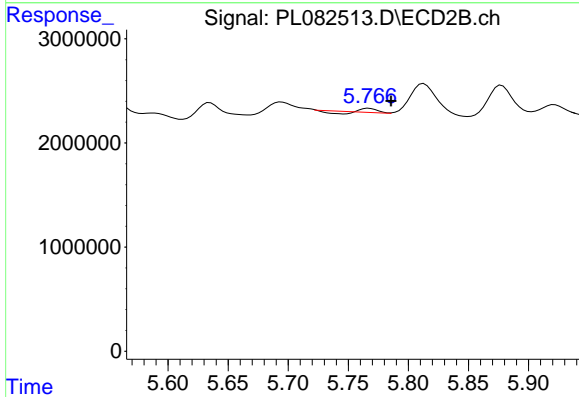
R.T.: 5.493 min
 Delta R.T.: 0.004 min
 Response: -404621
 Conc: N.D.



#15 Endosulfan II

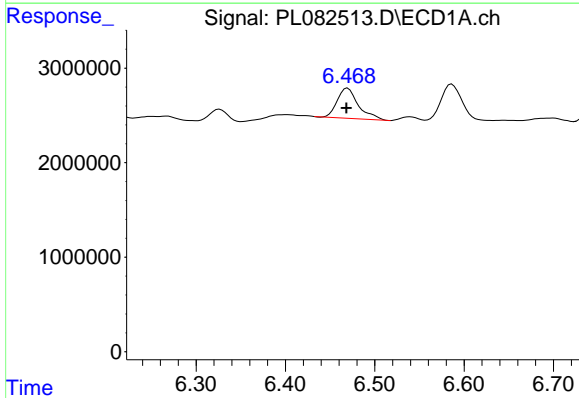
R.T.: 6.540 min
 Delta R.T.: -0.006 min
 Response: 462365
 Conc: 0.19 ng/ml

Instrument :
 ECD_L
 ClientSampleId :



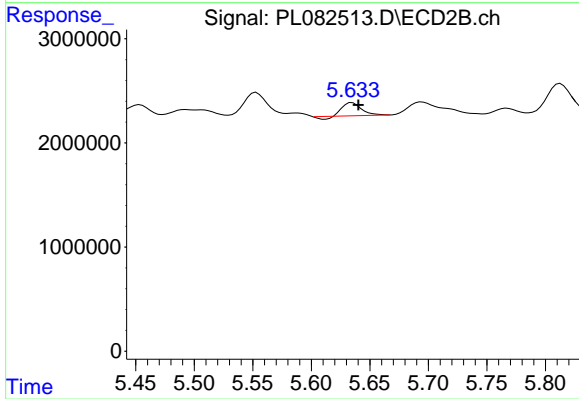
#15 Endosulfan II

R.T.: 5.767 min
 Delta R.T.: -0.018 min
 Response: 199529
 Conc: 0.09 ng/ml



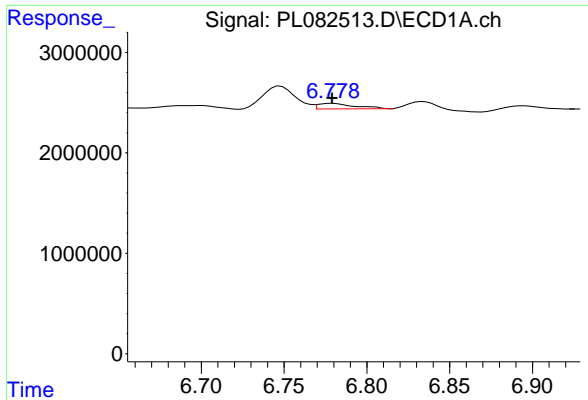
#16 4,4'-DDD

R.T.: 6.470 min
 Delta R.T.: 0.002 min
 Response: 5229306
 Conc: 2.58 ng/ml



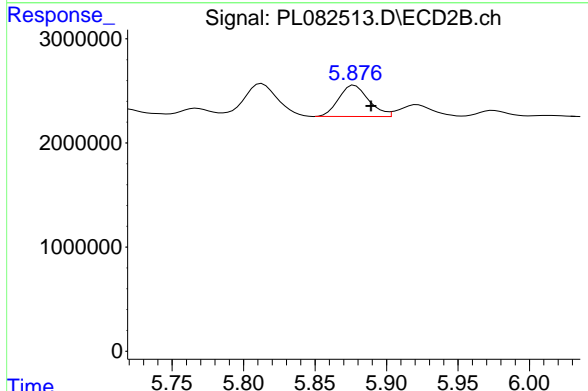
#16 4,4'-DDD

R.T.: 5.635 min
 Delta R.T.: -0.005 min
 Response: 1279141
 Conc: 0.68 ng/ml

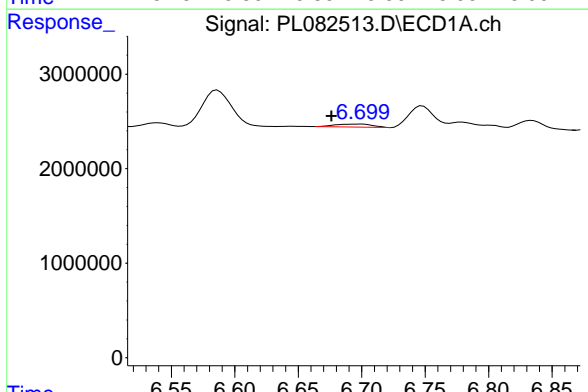


#17 4,4'-DDT
 R.T.: 6.779 min
 Delta R.T.: 0.000 min
 Response: 851408
 Conc: 0.37 ng/ml

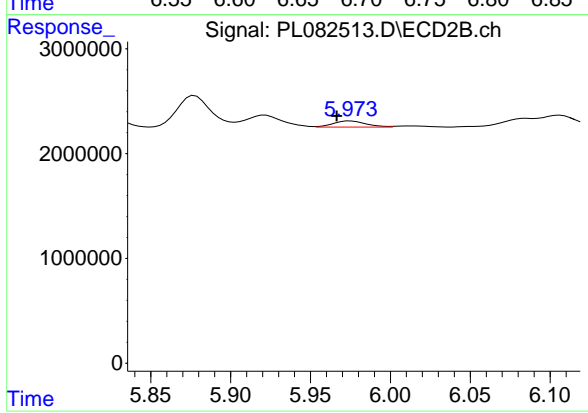
Instrument :
 ECD_L
 ClientSampleId :



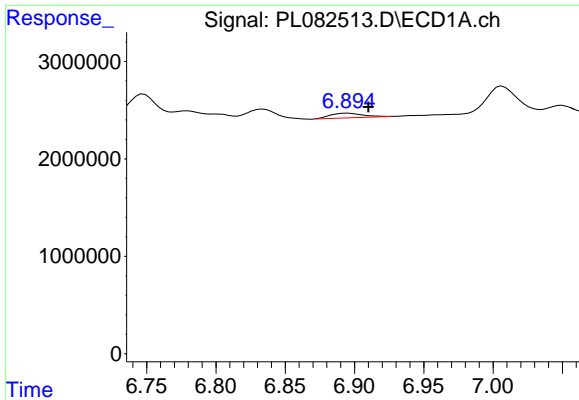
#17 4,4'-DDT
 R.T.: 5.878 min
 Delta R.T.: -0.011 min
 Response: 4376194
 Conc: 2.07 ng/ml



#18 Endrin aldehyde
 R.T.: 6.700 min
 Delta R.T.: 0.024 min
 Response: 644627
 Conc: 0.34 ng/ml

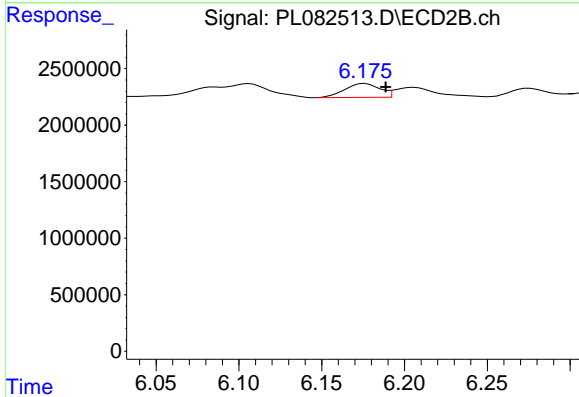


#18 Endrin aldehyde
 R.T.: 5.975 min
 Delta R.T.: 0.009 min
 Response: 830632
 Conc: 0.44 ng/ml

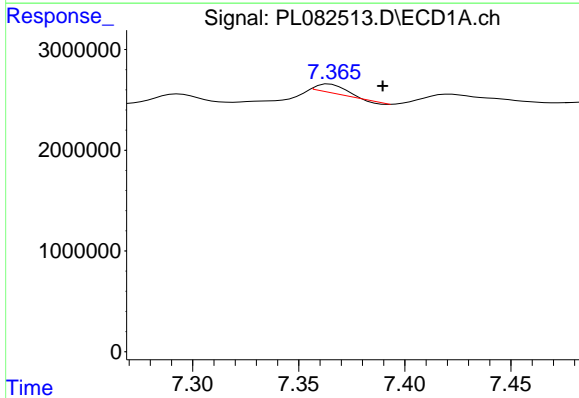


#19 Endosulfan Sulfate
 R.T.: 6.895 min
 Delta R.T.: -0.015 min
 Response: 761919
 Conc: 0.32 ng/ml

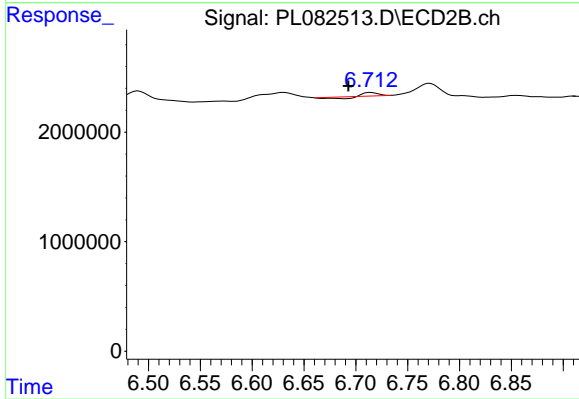
Instrument :
 ECD_L
 ClientSampleId :



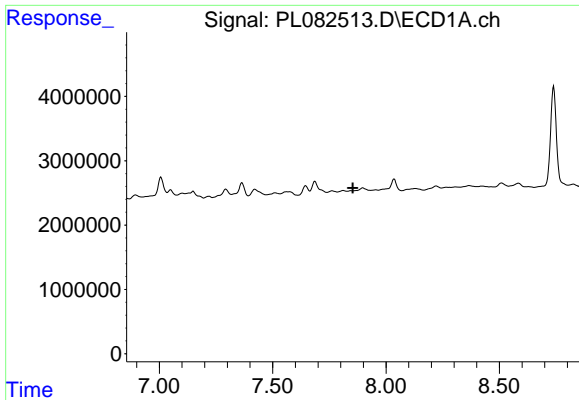
#19 Endosulfan Sulfate
 R.T.: 6.176 min
 Delta R.T.: -0.013 min
 Response: 1814033
 Conc: 0.77 ng/ml



#21 Endrin ketone
 R.T.: 7.365 min
 Delta R.T.: -0.025 min
 Response: 754582
 Conc: 0.32 ng/ml



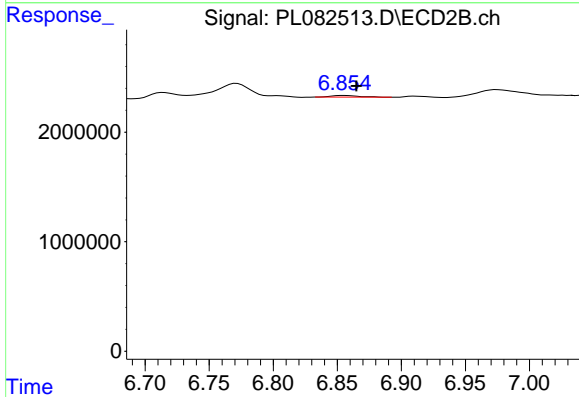
#21 Endrin ketone
 R.T.: 6.715 min
 Delta R.T.: 0.022 min
 Response: 109809
 Conc: 0.04 ng/ml



#22 Mirex

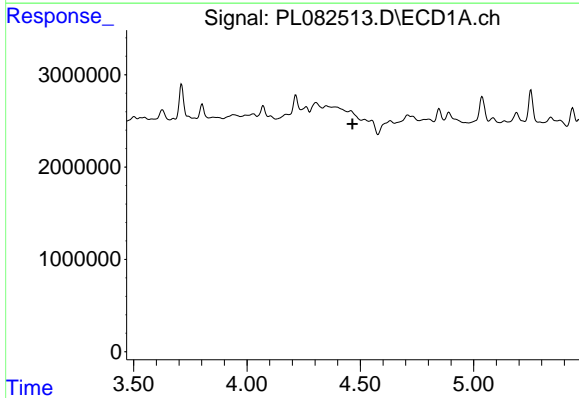
R.T.: 0.000 min
 Exp R.T. : 7.854 min
 Response: 0
 Conc: N.D.

Instrument :
 ECD_L
 ClientSampleId :



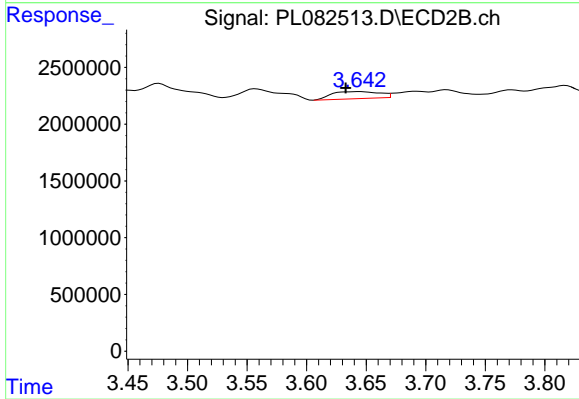
#22 Mirex

R.T.: 6.855 min
 Delta R.T.: -0.010 min
 Response: 228609
 Conc: 0.10 ng/ml



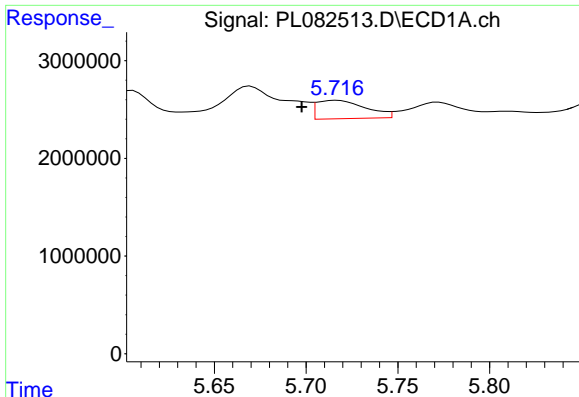
#23 Chlordane-1

R.T.: 0.000 min
 Exp R.T. : 4.466 min
 Response: 0
 Conc: N.D.



#23 Chlordane-1

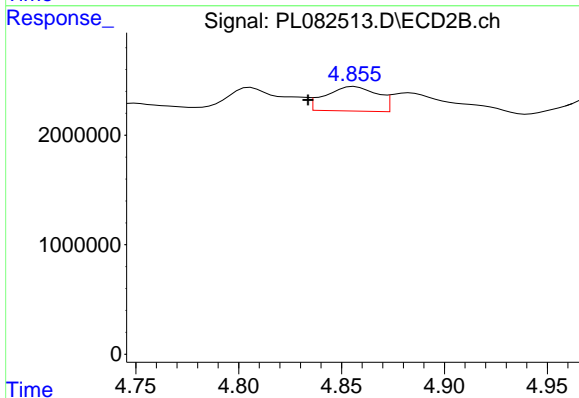
R.T.: 3.645 min
 Delta R.T.: 0.012 min
 Response: 1735329
 Conc: 19.57 ng/ml



#25 Chlordane-3

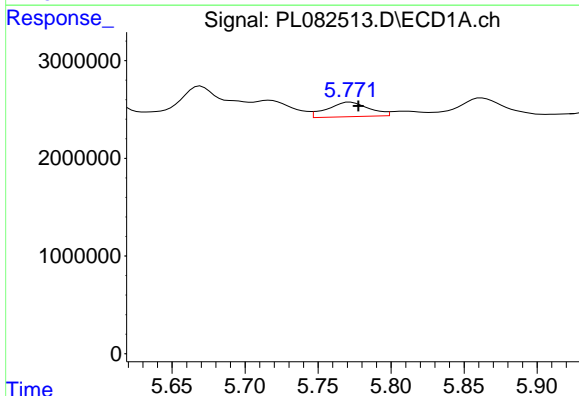
R.T.: 5.717 min
 Delta R.T.: 0.019 min
 Response: 3477971
 Conc: 8.06 ng/ml

Instrument :
 ECD_L
 ClientSampleId :



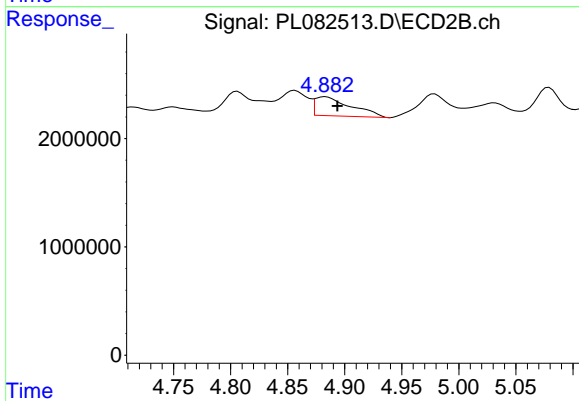
#25 Chlordane-3

R.T.: 4.856 min
 Delta R.T.: 0.023 min
 Response: 3912350
 Conc: 13.77 ng/ml



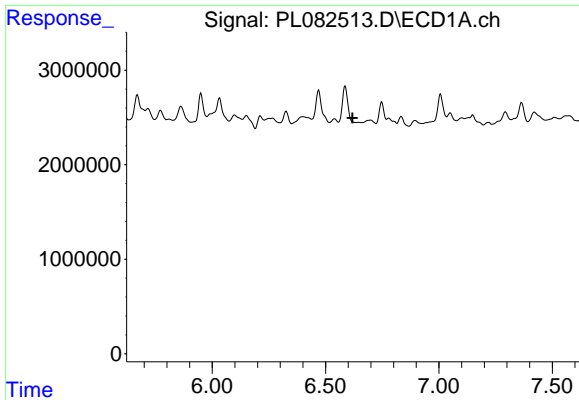
#26 Chlordane-4

R.T.: 5.772 min
 Delta R.T.: -0.006 min
 Response: 2939048
 Conc: 5.65 ng/ml



#26 Chlordane-4

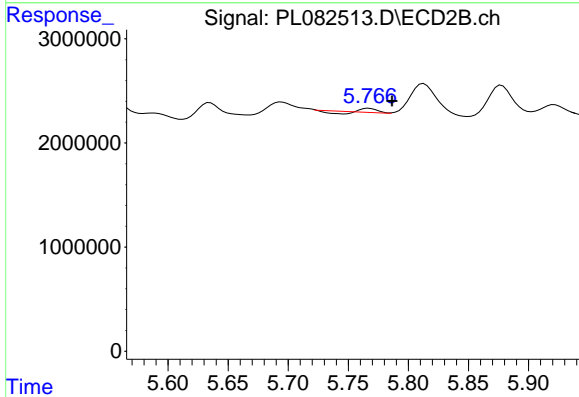
R.T.: 4.883 min
 Delta R.T.: -0.010 min
 Response: 3870593
 Conc: 12.97 ng/ml



#27 Chlordane-5

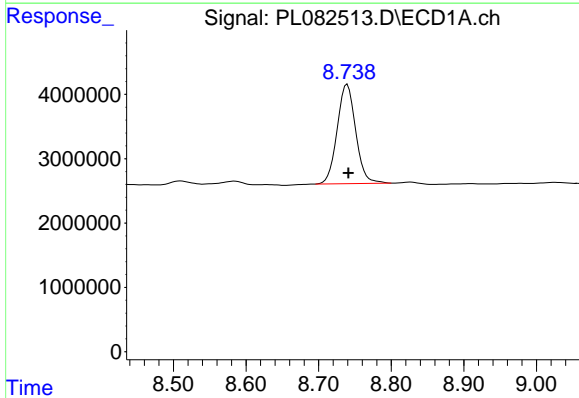
R.T.: 0.000 min
 Exp R.T.: 6.619 min
 Response: 0
 Conc: N.D.

Instrument :
 ECD_L
 ClientSampleId :



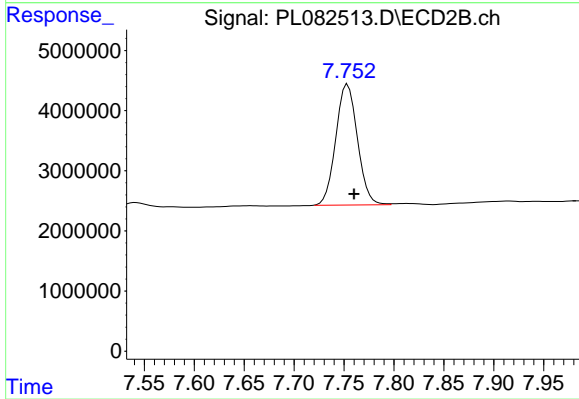
#27 Chlordane-5

R.T.: 5.767 min
 Delta R.T.: -0.019 min
 Response: 199529
 Conc: 2.02 ng/ml



#28 Decachlorobiphenyl

R.T.: 8.739 min
 Delta R.T.: -0.002 min
 Response: 27451030
 Conc: 14.38 ng/ml



#28 Decachlorobiphenyl

R.T.: 7.754 min
 Delta R.T.: -0.006 min
 Response: 30307809
 Conc: 13.28 ng/ml