

Data Path : Z:\pestpcbsrv\HPCHEM1\ECD\_L\Data\PL050425\  
 Data File : PL095518.D  
 Signal(s) : Signal #1: ECD1A.ch Signal #2: ECD2B.ch  
 Acq On : 01 May 2025 14:54  
 Operator : AR\AJ  
 Sample : Q1916-01  
 Misc :  
 ALS Vial : 14 Sample Multiplier: 1

Instrument :  
 ECD\_L  
 ClientSampleId :  
 WC-12

Integration File signal 1: autoint1.e  
 Integration File signal 2: autoint2.e  
 Quant Time: May 02 01:32:48 2025  
 Quant Method : Z:\pestpcbsrv\HPCHEM1\ECD\_L\methods\PL042325.M  
 Quant Title : GC Extractables  
 QLast Update : Wed Apr 23 16:23:18 2025  
 Response via : Initial Calibration  
 Integrator: ChemStation

Volume Inj. : 1 µl  
 Signal #1 Phase : ZB-MR1 Signal #2 Phase: ZB-MR2  
 Signal #1 Info : 30M x 0.32mm x0.5 Signal #2 Info : 30M x 0.32mm x0.25µm

| Compound                    | RT#1  | RT#2  | Resp#1   | Resp#2   | ng/ml  | ng/ml  |
|-----------------------------|-------|-------|----------|----------|--------|--------|
| -----                       |       |       |          |          |        |        |
| System Monitoring Compounds |       |       |          |          |        |        |
| 1) SA Tetrachlo...          | 3.593 | 2.909 | 59734518 | 70502947 | 18.297 | 22.172 |
| 28) SA Decachlor...         | 9.115 | 8.086 | 51110364 | 60078321 | 18.446 | 20.302 |

Target Compounds

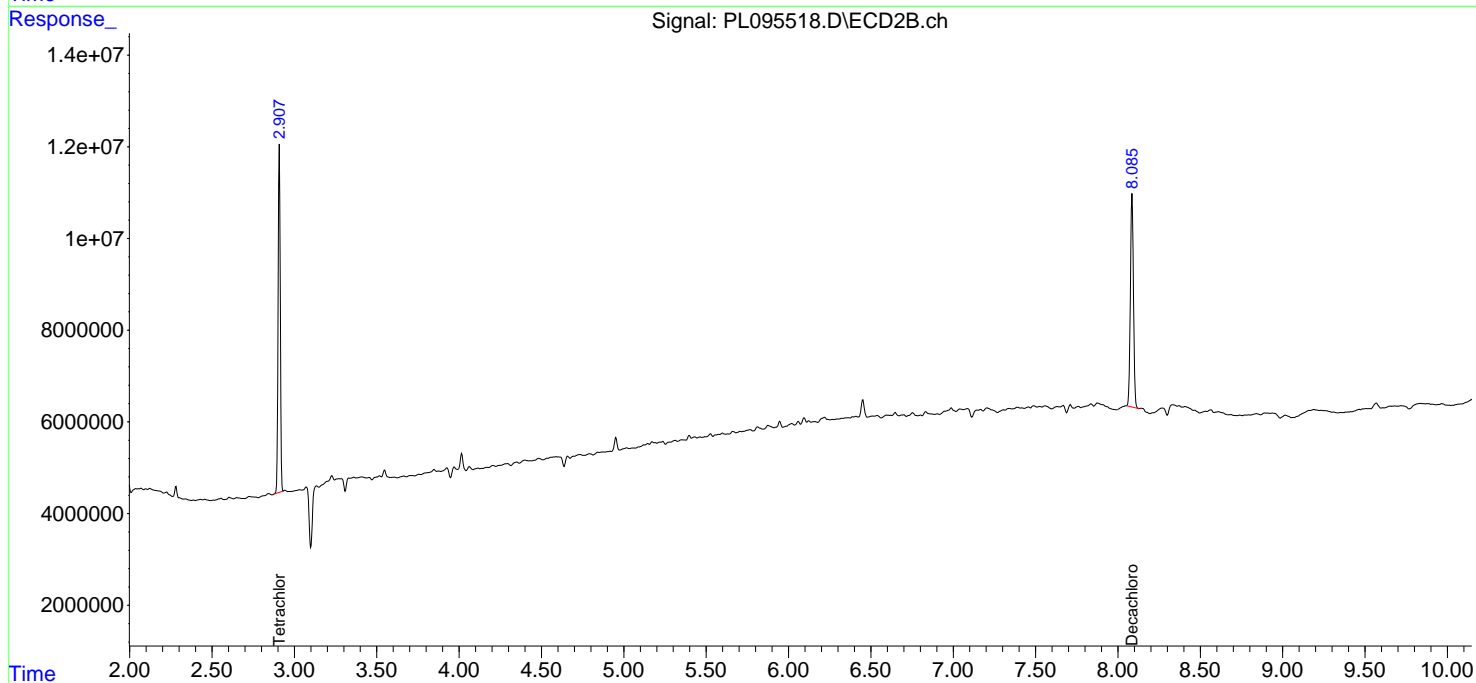
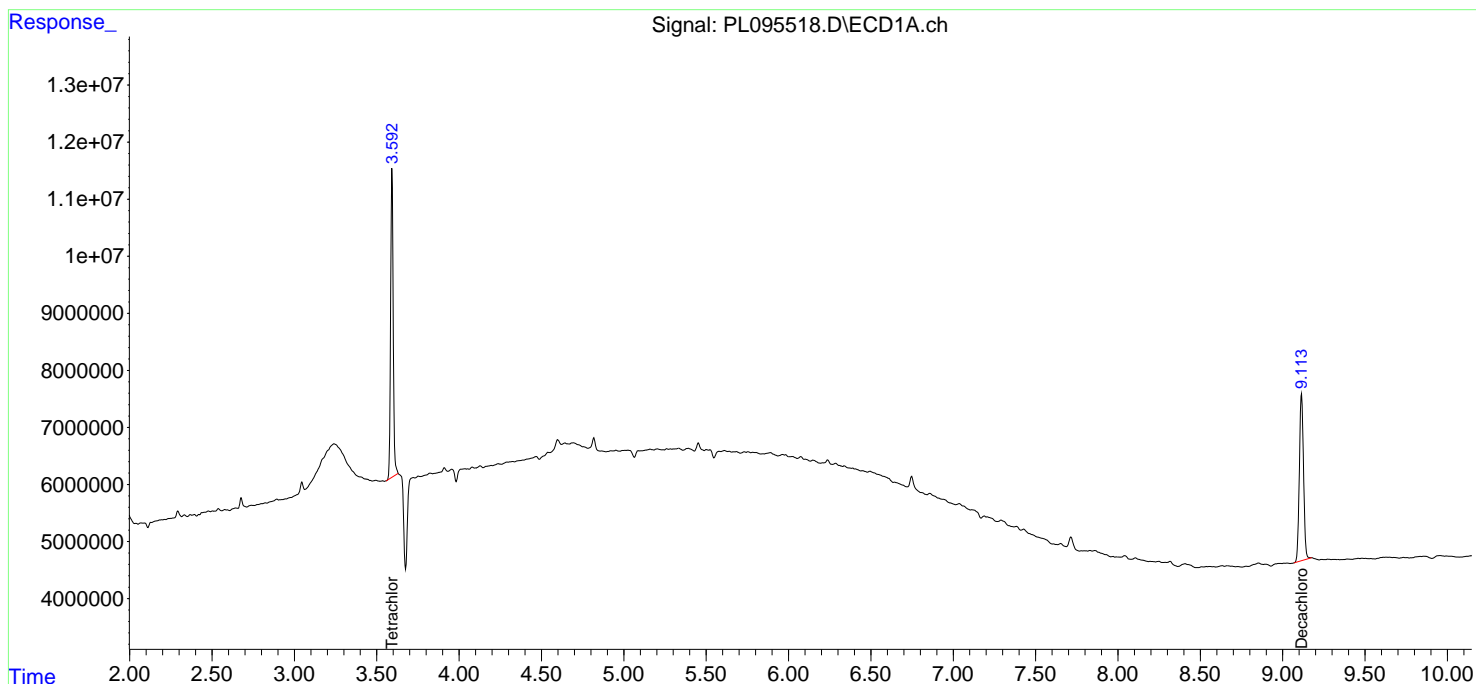
(f)=RT Delta > 1/2 Window (#)=Amounts differ by > 25% (m)=manual int.

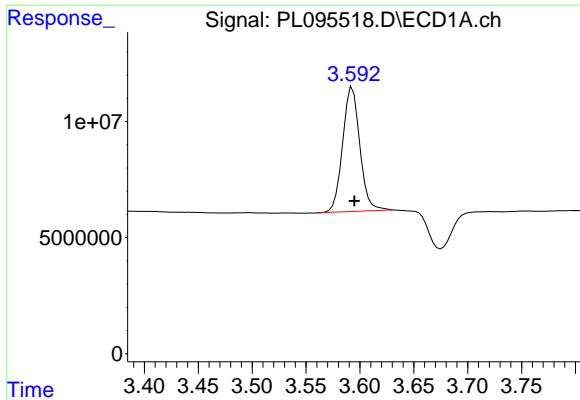
Data Path : Z:\pestpcbsrv\HPCHEM1\ECD\_L\Data\PL050425\  
 Data File : PL095518.D  
 Signal(s) : Signal #1: ECD1A.ch Signal #2: ECD2B.ch  
 Acq On : 01 May 2025 14:54  
 Operator : AR\AJ  
 Sample : Q1916-01  
 Misc :  
 ALS Vial : 14 Sample Multiplier: 1

Instrument :  
 ECD\_L  
 ClientSampleId :  
 WC-12

Integration File signal 1: autoint1.e  
 Integration File signal 2: autoint2.e  
 Quant Time: May 02 01:32:48 2025  
 Quant Method : Z:\pestpcbsrv\HPCHEM1\ECD\_L\methods\PL042325.M  
 Quant Title : GC Extractables  
 QLast Update : Wed Apr 23 16:23:18 2025  
 Response via : Initial Calibration  
 Integrator: ChemStation

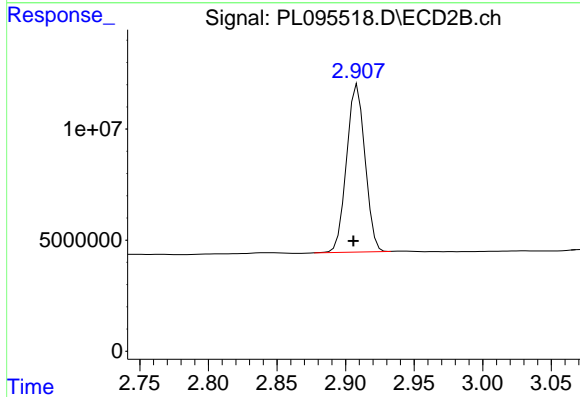
Volume Inj. : 1 µl  
 Signal #1 Phase : ZB-MR1 Signal #2 Phase: ZB-MR2  
 Signal #1 Info : 30M x 0.32mm x0.5 Signal #2 Info : 30M x 0.32mm x0.25µm



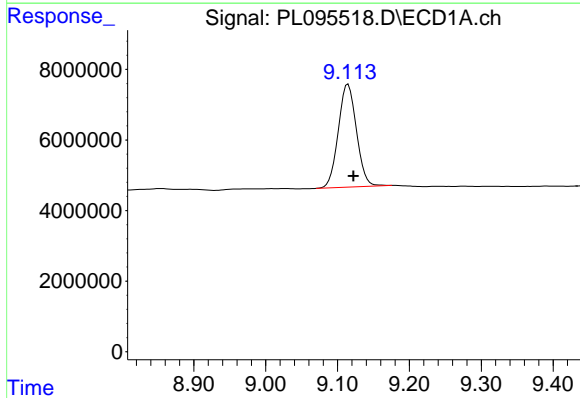


#1 Tetrachloro-m-xylene  
 R.T.: 3.593 min  
 Delta R.T.: -0.002 min  
 Response: 59734518  
 Conc: 18.30 ng/ml

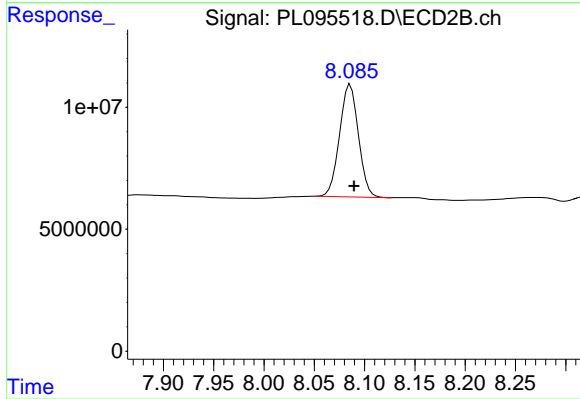
Instrument :  
 ECD\_L  
 ClientSampleId :  
 WC-12



#1 Tetrachloro-m-xylene  
 R.T.: 2.909 min  
 Delta R.T.: 0.003 min  
 Response: 70502947  
 Conc: 22.17 ng/ml



#28 Decachlorobiphenyl  
 R.T.: 9.115 min  
 Delta R.T.: -0.008 min  
 Response: 51110364  
 Conc: 18.45 ng/ml



#28 Decachlorobiphenyl  
 R.T.: 8.086 min  
 Delta R.T.: -0.004 min  
 Response: 60078321  
 Conc: 20.30 ng/ml