

Data Path : Z:\pestpcbsrv\HPCHEM1\ECD_L\Data\PL050521\
 Data File : PL066696.D
 Signal(s) : Signal #1: ECD1A.ch Signal #2: ECD2B.ch
 Acq On : 05 May 2021 14:24
 Operator : AR\AJ
 Sample : M2275-01
 Misc :
 ALS Vial : 12 Sample Multiplier: 1

Instrument :
 ECD_L
ClientSampled :
 CC-STONES

Manual Integrations
APPROVED
 Ankita
 5/6/2021 1:47:55 PM

Integration File signal 1: autoint1.e
 Integration File signal 2: autoint2.e
 Quant Time: May 05 16:41:51 2021
 Quant Method : Z:\pestpcbsrv\HPCHEM1\ECD_L\methods\PL042621.M
 Quant Title : GC Extractables
 QLast Update : Wed Apr 28 08:49:49 2021
 Response via : Initial Calibration
 Integrator: ChemStation

Volume Inj. : 1 µl
 Signal #1 Phase : ZB-MR2 Signal #2 Phase: ZB-MR1
 Signal #1 Info : 30M x 0.32mm x0.2 Signal #2 Info : 30M x 0.32mm x0.5µm

Compound	RT#1	RT#2	Resp#1	Resp#2	ng/ml	ng/ml

System Monitoring Compounds						
1) SA Tetrachlo...	3.426	4.152	56161664	59388477	14.905	16.910
28) SA Decachlor...	8.146	9.347	71018147	55517769	18.522m	17.946

Target Compounds

(f)=RT Delta > 1/2 Window (#)=Amounts differ by > 25% (m)=manual int.

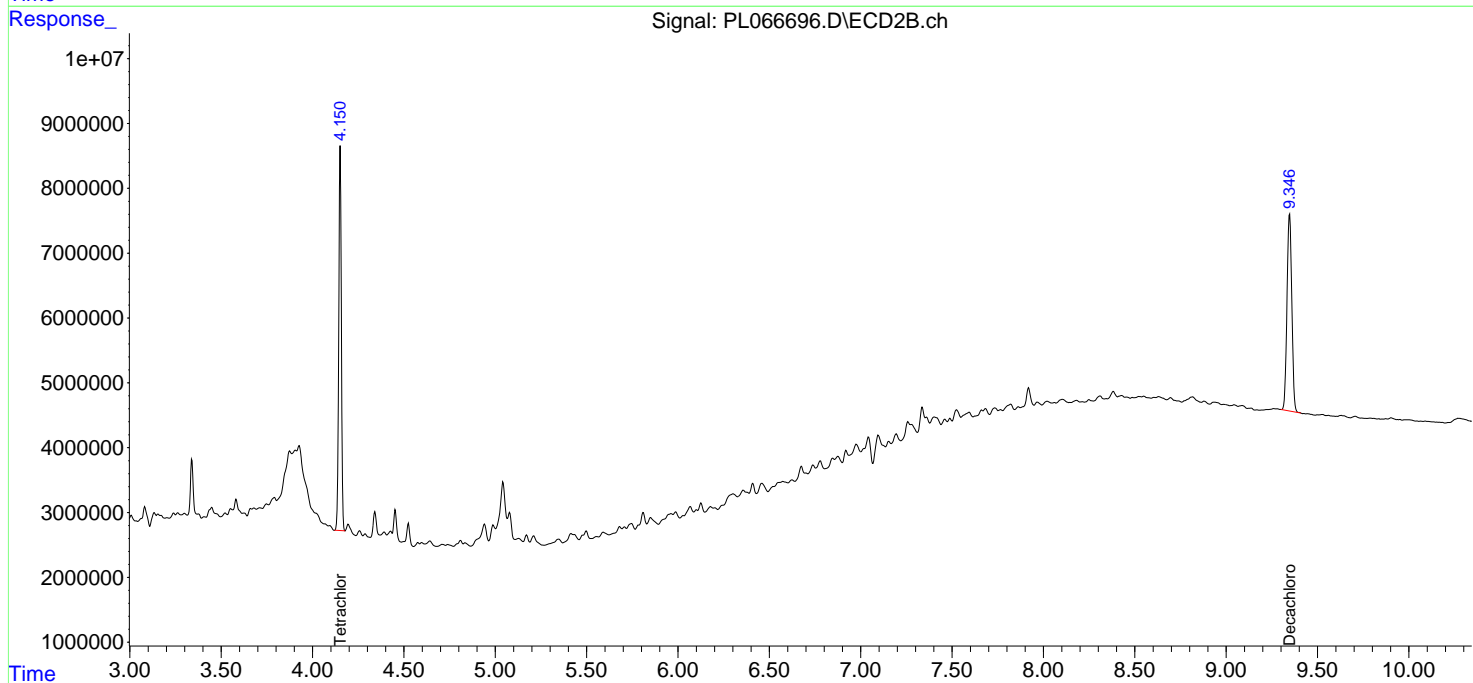
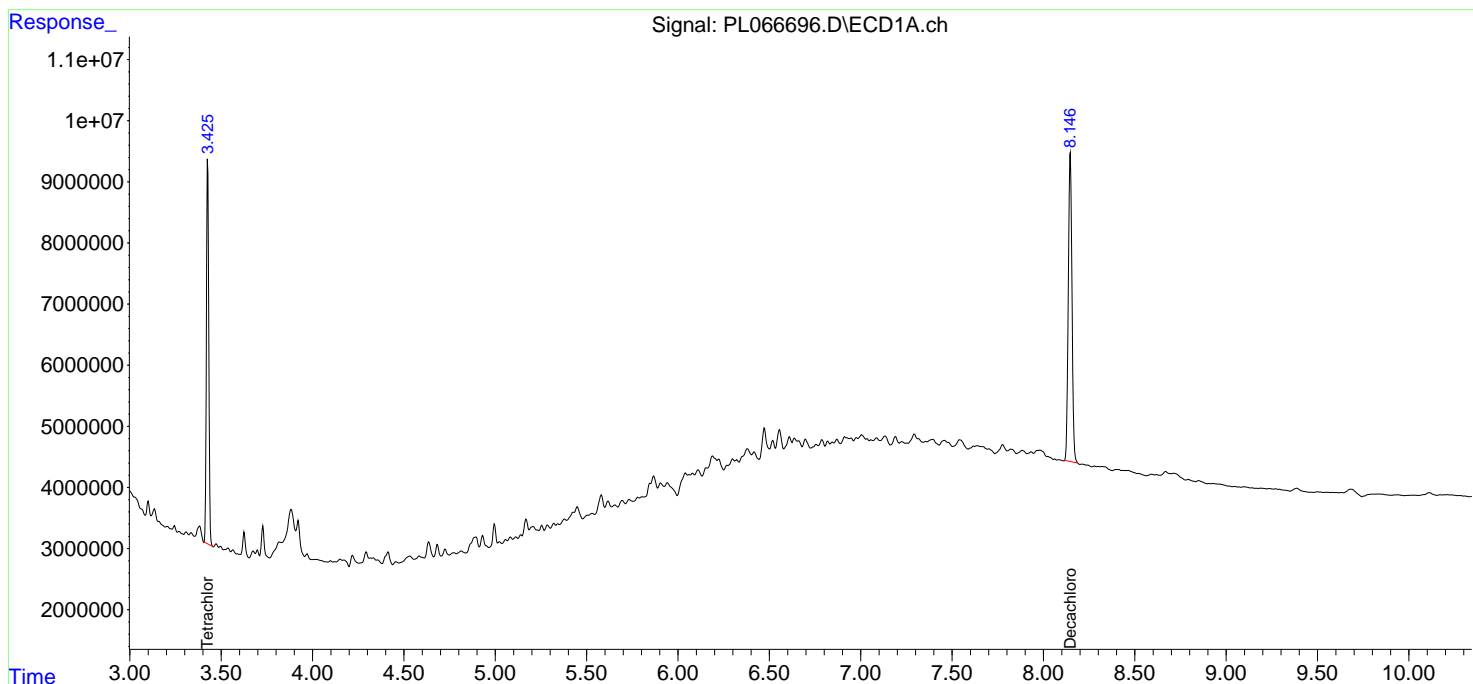
Data Path : Z:\pestpcbsrv\HPCHEM1\ECD_L\Data\PL050521\
 Data File : PL066696.D
 Signal(s) : Signal #1: ECD1A.ch Signal #2: ECD2B.ch
 Acq On : 05 May 2021 14:24
 Operator : AR\AJ
 Sample : M2275-01
 Misc :
 ALS Vial : 12 Sample Multiplier: 1

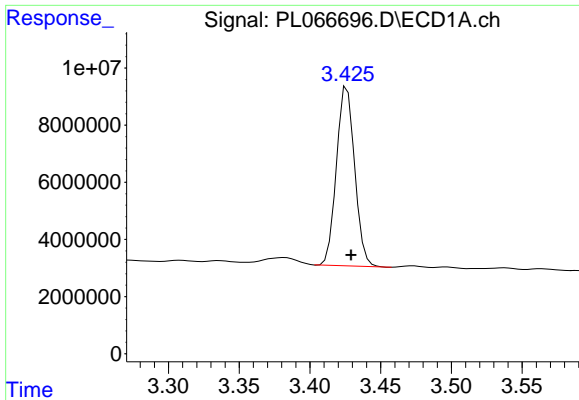
Instrument :
 ECD_L
ClientSampled :
 CC-STONES

Manual Integrations
APPROVED
 Ankita
 5/6/2021 1:47:55 PM

Integration File signal 1: autoint1.e
 Integration File signal 2: autoint2.e
 Quant Time: May 05 16:41:51 2021
 Quant Method : Z:\pestpcbsrv\HPCHEM1\ECD_L\methods\PL042621.M
 Quant Title : GC Extractables
 QLast Update : Wed Apr 28 08:49:49 2021
 Response via : Initial Calibration
 Integrator: ChemStation

Volume Inj. : 1 µl
 Signal #1 Phase : ZB-MR2 Signal #2 Phase: ZB-MR1
 Signal #1 Info : 30M x 0.32mm x0.2 Signal #2 Info : 30M x 0.32mm x0.5µm

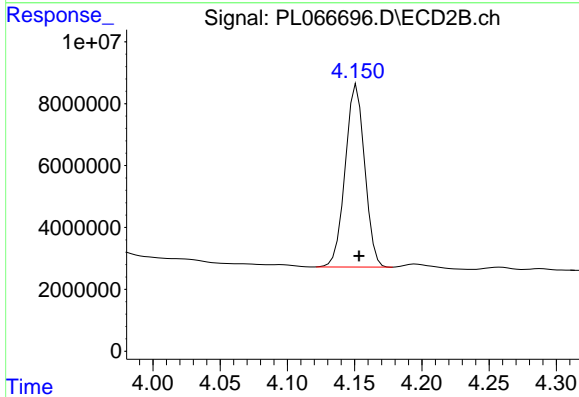




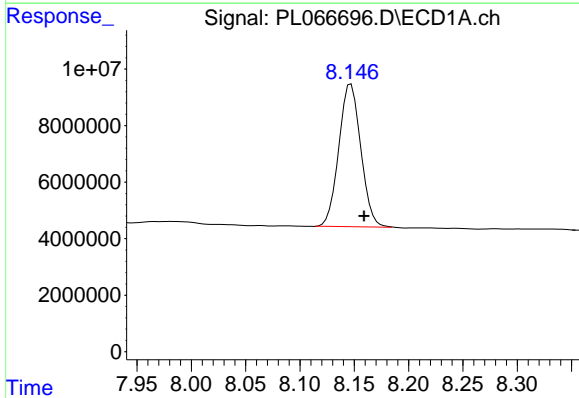
#1 Tetrachloro-m-xylene
 R.T.: 3.426 min
 Delta R.T.: -0.003 min
 Response: 56161664
 Conc: 14.90 ng/ml

Instrument :
 ECD_L
 ClientSampled :
 CC-STONES

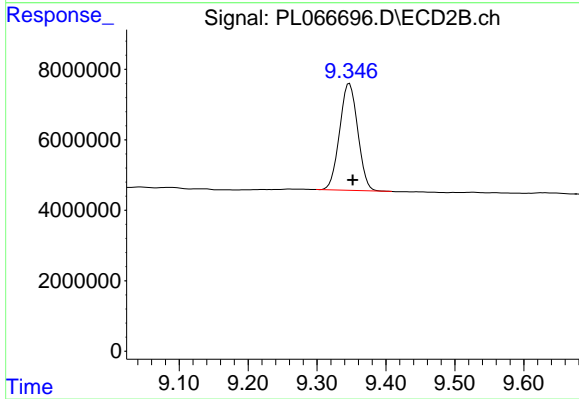
Manual Integrations
 APPROVED
 Ankita
 5/6/2021 1:47:55 PM



#1 Tetrachloro-m-xylene
 R.T.: 4.152 min
 Delta R.T.: -0.002 min
 Response: 59388477
 Conc: 16.91 ng/ml



#28 Decachlorobiphenyl
 R.T.: 8.146 min
 Delta R.T.: -0.014 min
 Response: 71018147
 Conc: 18.52 ng/ml m



#28 Decachlorobiphenyl
 R.T.: 9.347 min
 Delta R.T.: -0.005 min
 Response: 55517769
 Conc: 17.95 ng/ml