

Data Path : Z:\pestpcbsrv\HPCHEM1\ECD_L\Data\PL050523\
 Data File : PL082564.D
 Signal(s) : Signal #1: ECD1A.ch Signal #2: ECD2B.ch
 Acq On : 05 May 2023 18:16
 Operator : AR\AJ
 Sample : PSTDCCC050
 Misc :
 ALS Vial : 4 Sample Multiplier: 1

Instrument :
 ECD_L
 ClientSampleId :

Integration File signal 1: autoint1.e
 Integration File signal 2: autoint2.e
 Quant Time: May 05 21:25:43 2023
 Quant Method : Z:\pestpcbsrv\HPCHEM1\ECD_L\methods\PL042023.M
 Quant Title : GC Extractables
 QLast Update : Fri Apr 21 03:12:31 2023
 Response via : Initial Calibration
 Integrator: ChemStation

Volume Inj. : 1 µl
 Signal #1 Phase : ZB-MR2 Signal #2 Phase: ZB-MR1
 Signal #1 Info : 30M x 0.32mm x0.2 Signal #2 Info : 30M x 0.32mm x0.5µm

	Compound	RT#1	RT#2	Resp#1	Resp#2	ng/ml	ng/ml

System Monitoring Compounds							
1)	SA Tetrachlo...	3.319	2.642	138.0E6	122.5E6	51.655	52.897
28)	SA Decachlor...	8.734	7.751	105.1E6	121.4E6	55.046	53.195
Target Compounds							
2)	A alpha-BHC	3.769	3.139	213.0E6	182.5E6	53.512	53.613
3)	MA gamma-BHC...	4.097	3.466	196.4E6	168.5E6	52.527	52.407
4)	MA Heptachlor	4.675	3.798	193.9E6	179.2E6	53.058	52.348
5)	MB Aldrin	5.011	4.074	174.3E6	170.3E6	52.850	54.066
6)	B beta-BHC	4.300	3.766	86038346	69492627	50.448	50.933
7)	B delta-BHC	4.541	3.993	191.2E6	168.0E6	53.141	54.771
8)	Heptachlo...	5.437	4.576	159.0E6	151.4E6	52.131	52.540
9)	A Endosulfan I	5.817	4.943	148.1E6	143.2E6	53.421	53.636
10)	B gamma-Chl...	5.692	4.824	162.4E6	154.5E6	54.022	53.242
11)	B alpha-Chl...	5.769	4.887	160.7E6	154.3E6	53.852	53.142
12)	B 4,4'-DDE	5.948	5.078	140.1E6	129.7E6	55.121	56.410
13)	MA Dieldrin	6.092	5.207	148.0E6	140.9E6	53.651	52.177
14)	MA Endrin	6.319	5.480	131.4E6	124.8E6	54.197	51.004
15)	B Endosulfa...	6.541	5.777	122.6E6	122.0E6	50.355	54.114
16)	A 4,4'-DDD	6.463	5.632	114.5E6	107.8E6	56.501	57.620
17)	MA 4,4'-DDT	6.774	5.880	121.8E6	116.9E6	53.240	55.336
18)	B Endrin al...	6.671	5.957	100.8E6	99858506	53.481	53.361
19)	B Endosulfa...	6.905	6.180	127.3E6	127.3E6	53.671	54.071
20)	A Methoxychlor	7.254	6.459	64256507	60397245	52.655	49.839
21)	B Endrin ke...	7.384	6.684	130.5E6	125.0E6	54.515	49.267
22)	Mirex	7.848	6.856	101.9E6	108.1E6	52.070	46.899
24)	Chlordane-2	5.011f	4.219	174.3E6	3462820	1463.867	30.879 #
25)	Chlordane-3	5.692	4.824	162.4E6	154.5E6	376.267	543.806 #
26)	Chlordane-4	5.769	4.887	160.7E6	154.3E6	309.139	516.957 #
27)	Chlordane-5	0.000	5.777	0	122.0E6	N.D.	1235.692 #

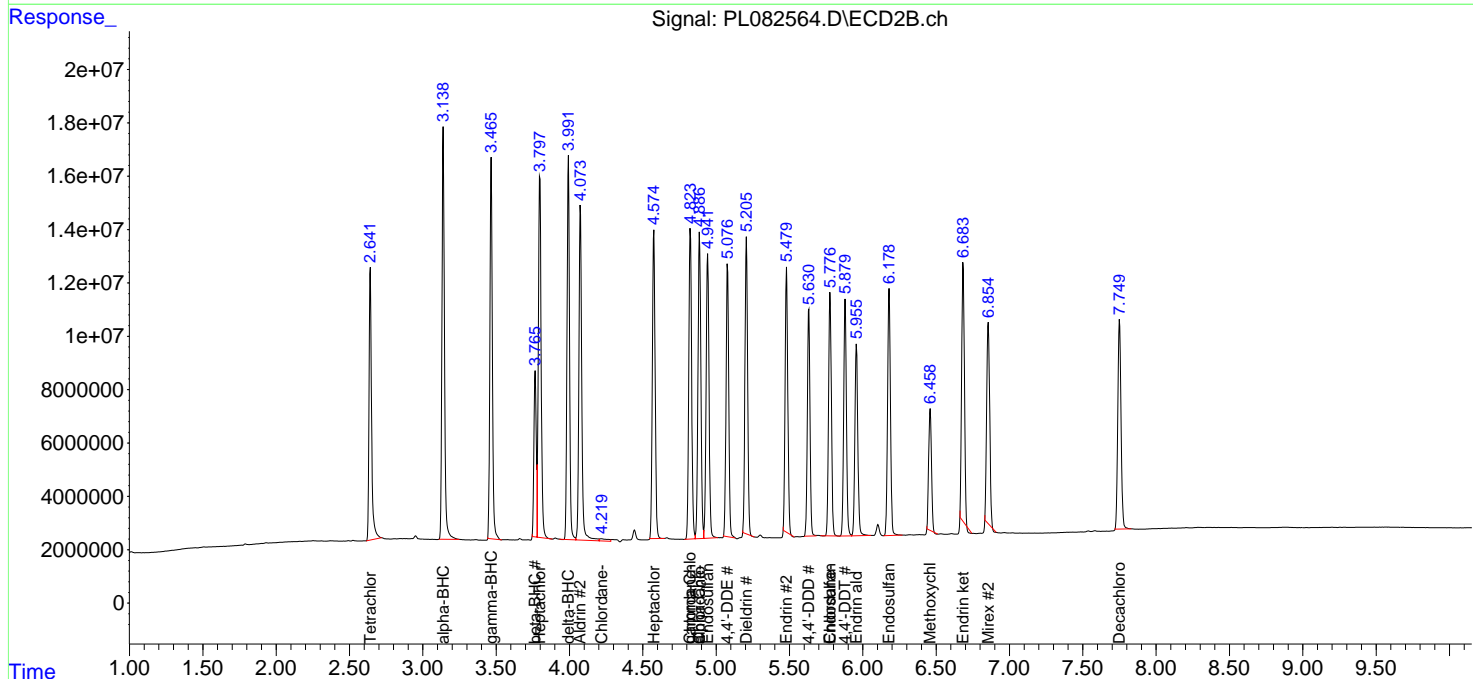
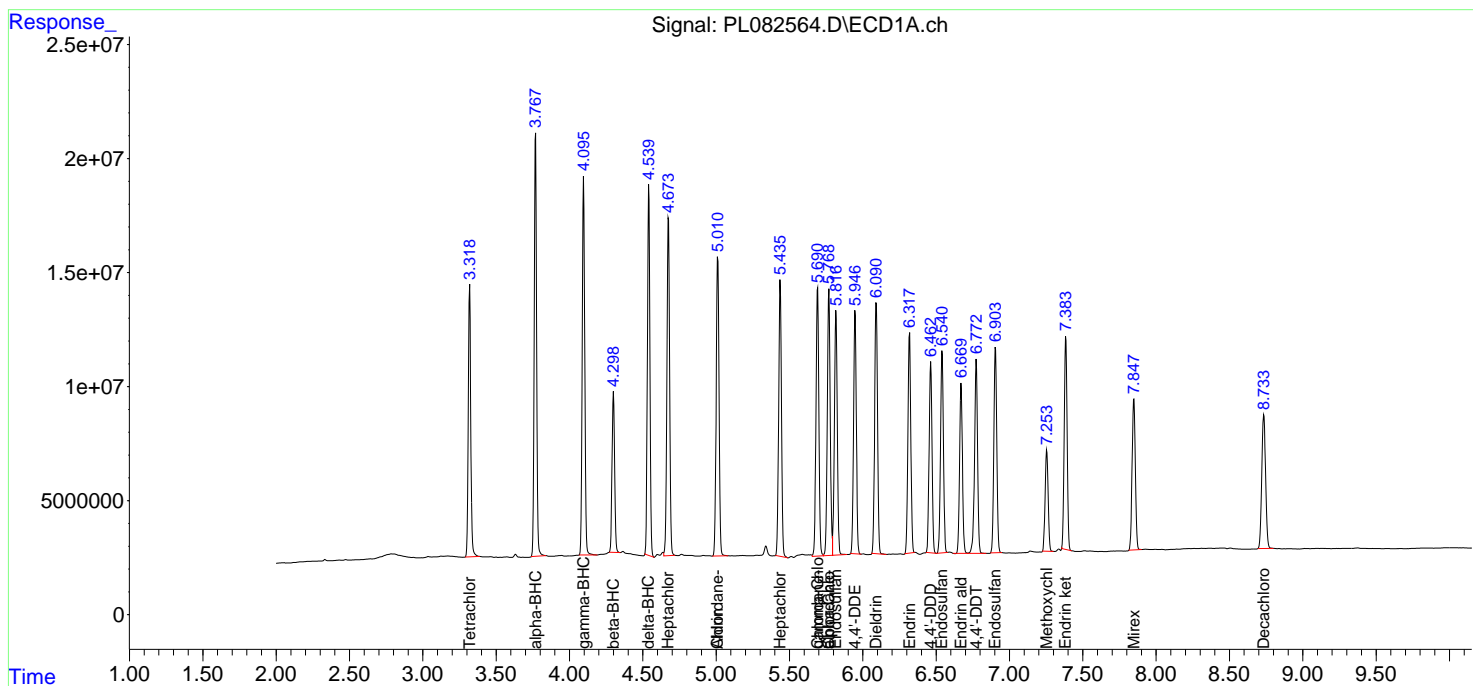
(f)=RT Delta > 1/2 Window (#)=Amounts differ by > 25% (m)=manual int.

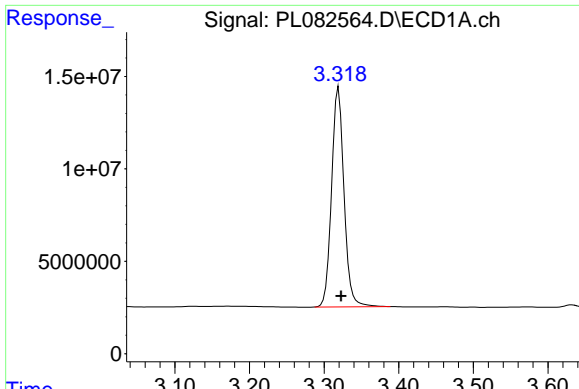
Data Path : Z:\pestpcbsrv\HPCHEM1\ECD_L\Data\PL050523\
 Data File : PL082564.D
 Signal(s) : Signal #1: ECD1A.ch Signal #2: ECD2B.ch
 Acq On : 05 May 2023 18:16
 Operator : AR\AJ
 Sample : PSTDCCC050
 Misc :
 ALS Vial : 4 Sample Multiplier: 1

Instrument :
 ECD_L
 ClientSampleId :

Integration File signal 1: autoint1.e
 Integration File signal 2: autoint2.e
 Quant Time: May 05 21:25:43 2023
 Quant Method : Z:\pestpcbsrv\HPCHEM1\ECD_L\methods\PL042023.M
 Quant Title : GC Extractables
 QLast Update : Fri Apr 21 03:12:31 2023
 Response via : Initial Calibration
 Integrator: ChemStation

Volume Inj. : 1 µl
 Signal #1 Phase : ZB-MR2 Signal #2 Phase: ZB-MR1
 Signal #1 Info : 30M x 0.32mm x0.2 Signal #2 Info : 30M x 0.32mm x0.5µm

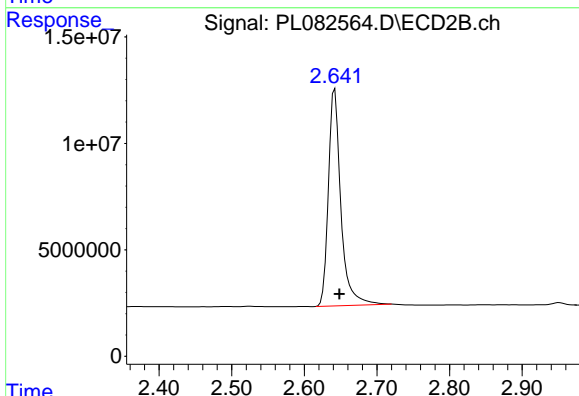




#1 Tetrachloro-m-xylene

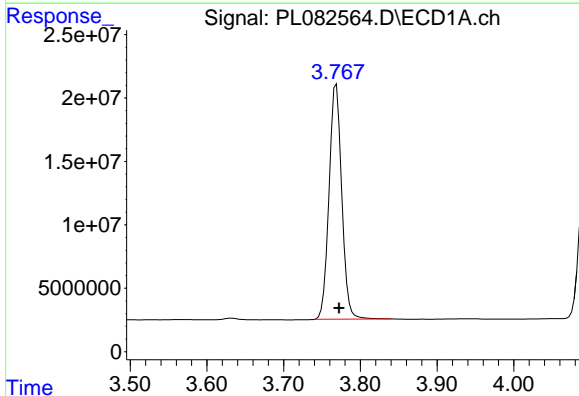
R.T.: 3.319 min
 Delta R.T.: -0.004 min
 Response: 137980890
 Conc: 51.65 ng/ml

Instrument :
 ECD_L
 ClientSampleId :



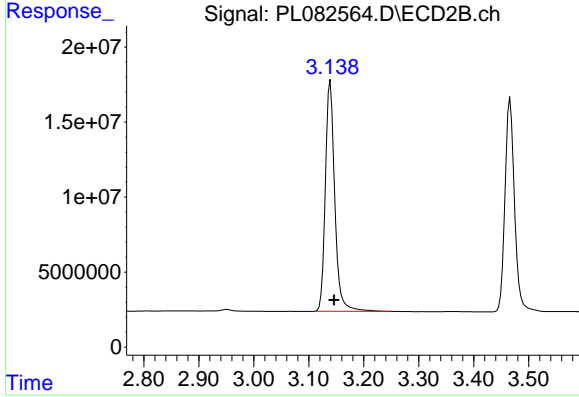
#1 Tetrachloro-m-xylene

R.T.: 2.642 min
 Delta R.T.: -0.006 min
 Response: 122547346
 Conc: 52.90 ng/ml



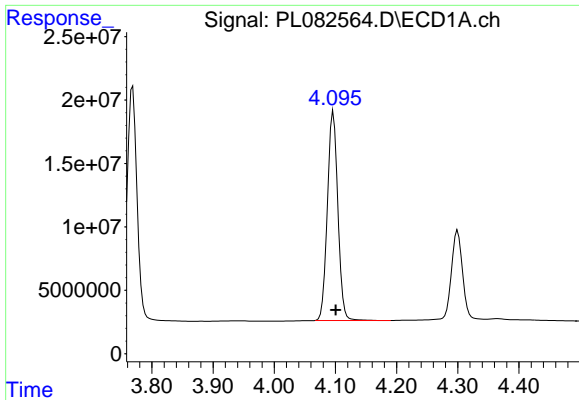
#2 alpha-BHC

R.T.: 3.769 min
 Delta R.T.: -0.004 min
 Response: 212990791
 Conc: 53.51 ng/ml



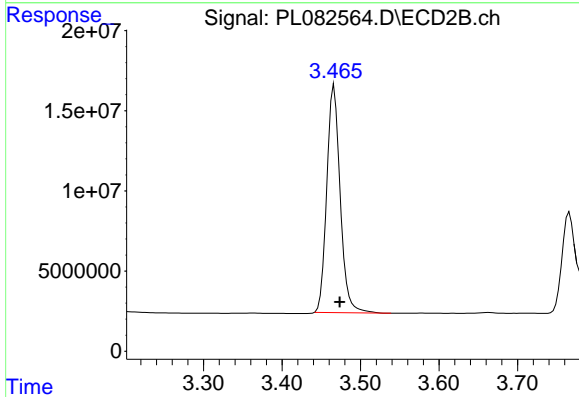
#2 alpha-BHC

R.T.: 3.139 min
 Delta R.T.: -0.007 min
 Response: 182472250
 Conc: 53.61 ng/ml

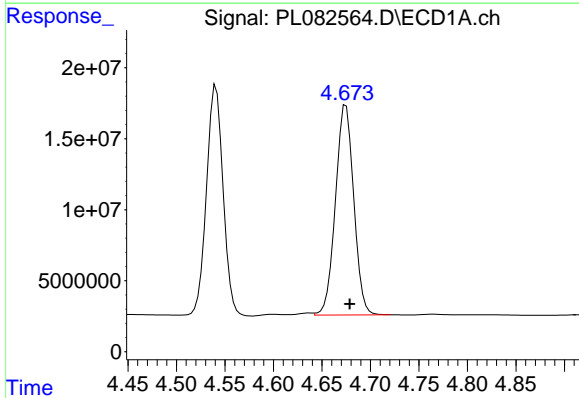


#3 gamma-BHC (Lindane)
 R.T.: 4.097 min
 Delta R.T.: -0.004 min
 Response: 196393894
 Conc: 52.53 ng/ml

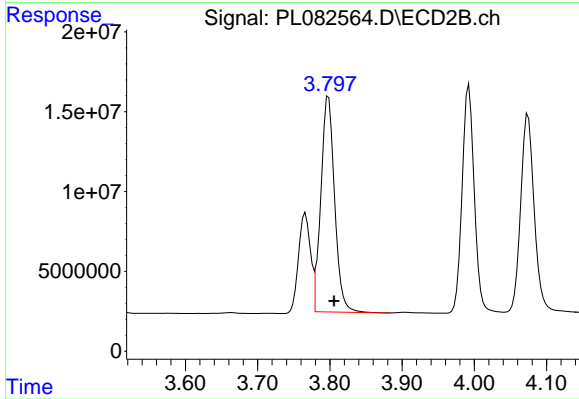
Instrument :
 ECD_L
 ClientSampleId :



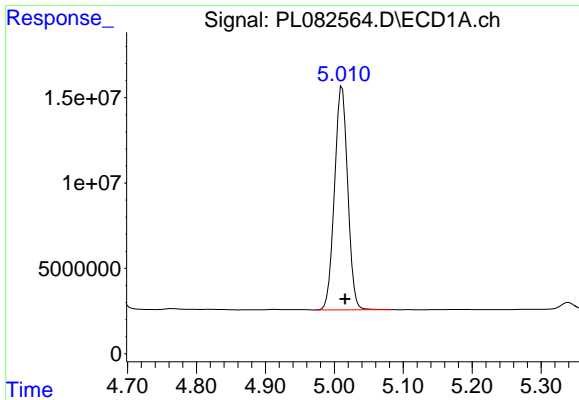
#3 gamma-BHC (Lindane)
 R.T.: 3.466 min
 Delta R.T.: -0.007 min
 Response: 168502889
 Conc: 52.41 ng/ml



#4 Heptachlor
 R.T.: 4.675 min
 Delta R.T.: -0.004 min
 Response: 193870252
 Conc: 53.06 ng/ml

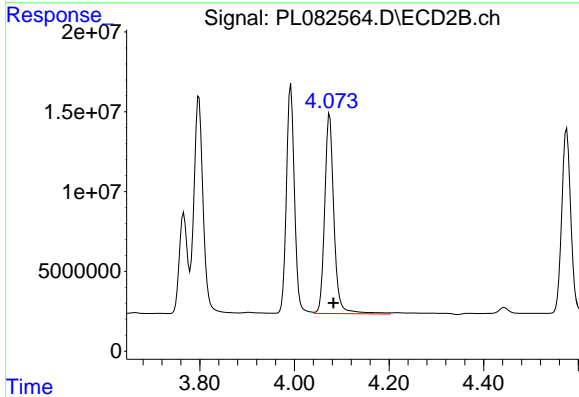


#4 Heptachlor
 R.T.: 3.798 min
 Delta R.T.: -0.008 min
 Response: 179198666
 Conc: 52.35 ng/ml

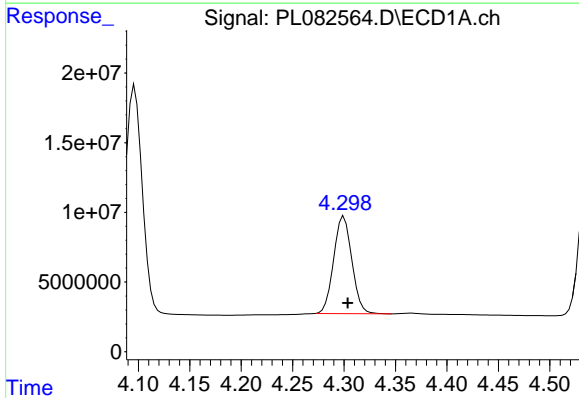


#5 Aldrin
 R.T.: 5.011 min
 Delta R.T.: -0.004 min
 Response: 174276979
 Conc: 52.85 ng/ml

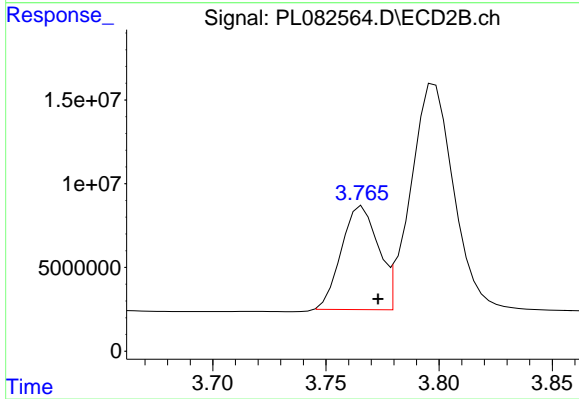
Instrument :
 ECD_L
 ClientSampleId :



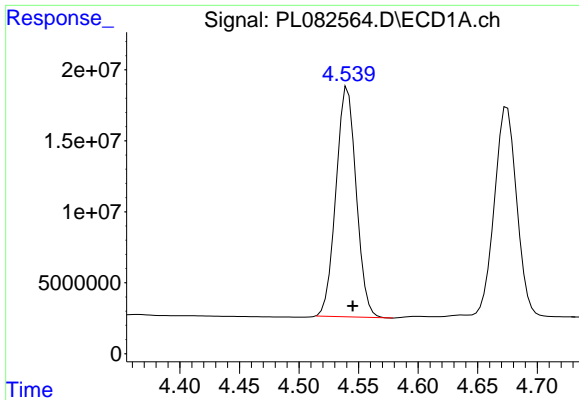
#5 Aldrin
 R.T.: 4.074 min
 Delta R.T.: -0.008 min
 Response: 170300381
 Conc: 54.07 ng/ml



#6 beta-BHC
 R.T.: 4.300 min
 Delta R.T.: -0.004 min
 Response: 86038346
 Conc: 50.45 ng/ml



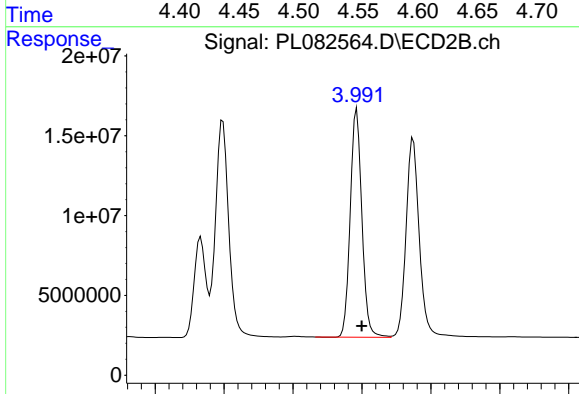
#6 beta-BHC
 R.T.: 3.766 min
 Delta R.T.: -0.007 min
 Response: 69492627
 Conc: 50.93 ng/ml



#7 delta-BHC

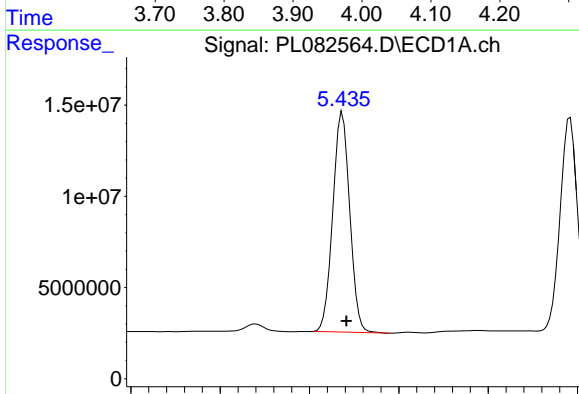
R.T.: 4.541 min
 Delta R.T.: -0.004 min
 Response: 191188497
 Conc: 53.14 ng/ml

Instrument :
 ECD_L
 ClientSampleId :



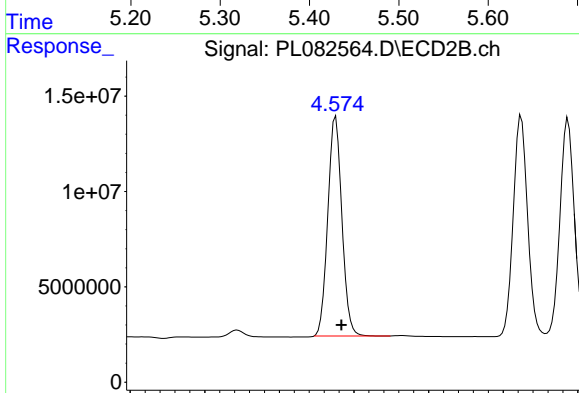
#7 delta-BHC

R.T.: 3.993 min
 Delta R.T.: -0.007 min
 Response: 168003242
 Conc: 54.77 ng/ml



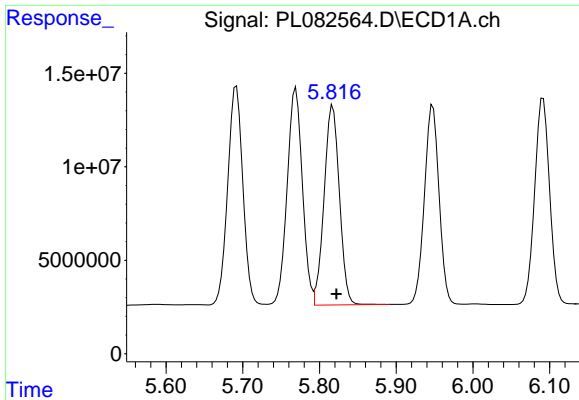
#8 Heptachlor epoxide

R.T.: 5.437 min
 Delta R.T.: -0.004 min
 Response: 159018773
 Conc: 52.13 ng/ml



#8 Heptachlor epoxide

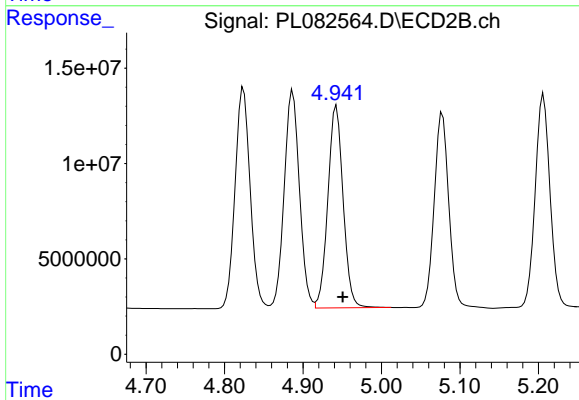
R.T.: 4.576 min
 Delta R.T.: -0.008 min
 Response: 151360978
 Conc: 52.54 ng/ml



#9 Endosulfan I

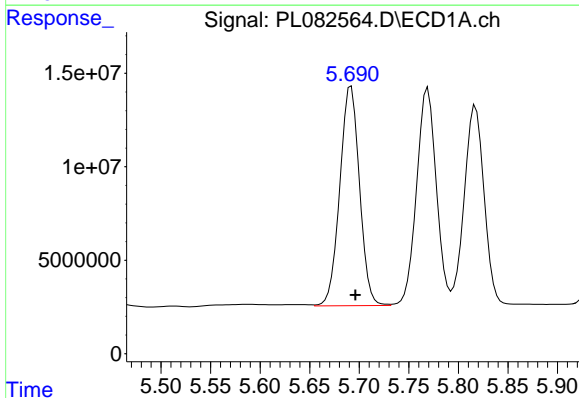
R.T.: 5.817 min
 Delta R.T.: -0.005 min
 Response: 148120524
 Conc: 53.42 ng/ml

Instrument :
 ECD_L
 ClientSampleId :



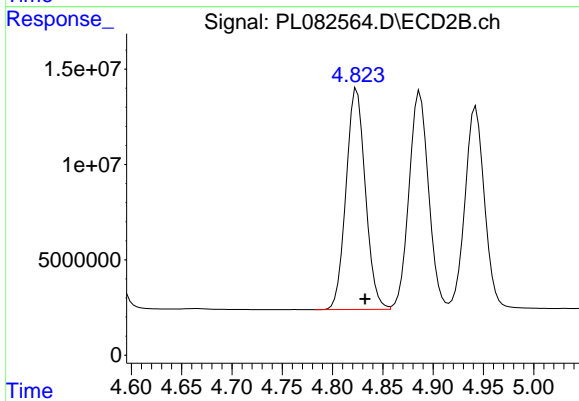
#9 Endosulfan I

R.T.: 4.943 min
 Delta R.T.: -0.008 min
 Response: 143179035
 Conc: 53.64 ng/ml



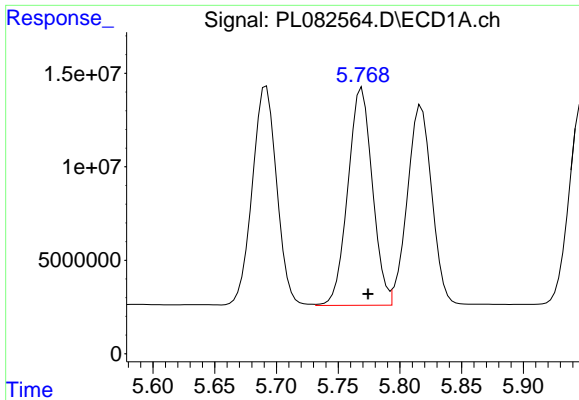
#10 gamma-Chlordane

R.T.: 5.692 min
 Delta R.T.: -0.004 min
 Response: 162435738
 Conc: 54.02 ng/ml



#10 gamma-Chlordane

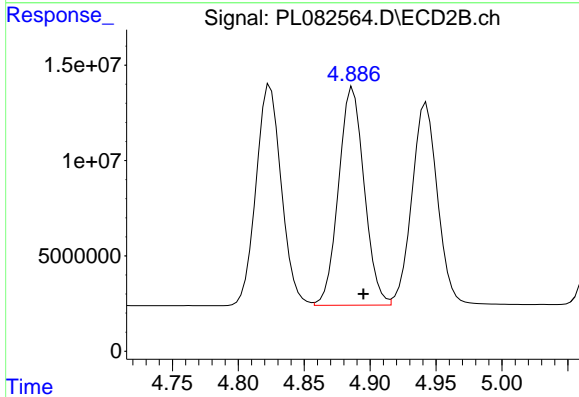
R.T.: 4.824 min
 Delta R.T.: -0.008 min
 Response: 154500598
 Conc: 53.24 ng/ml



#11 alpha-Chlordane

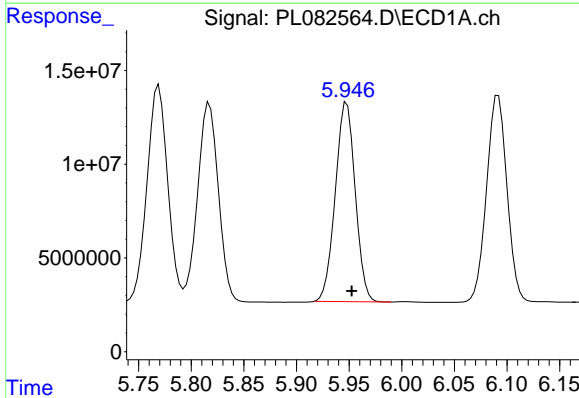
R.T.: 5.769 min
 Delta R.T.: -0.005 min
 Response: 160726047
 Conc: 53.85 ng/ml

Instrument :
 ECD_L
 ClientSampleId :



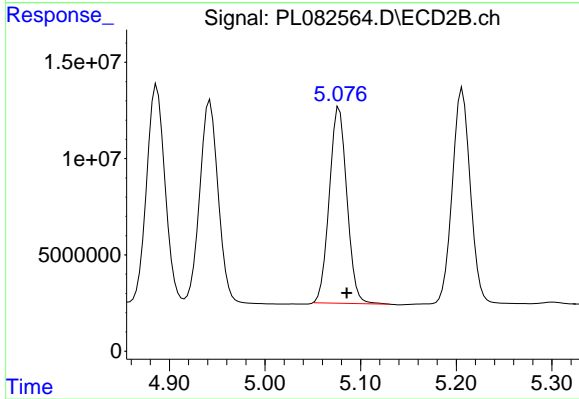
#11 alpha-Chlordane

R.T.: 4.887 min
 Delta R.T.: -0.008 min
 Response: 154263537
 Conc: 53.14 ng/ml



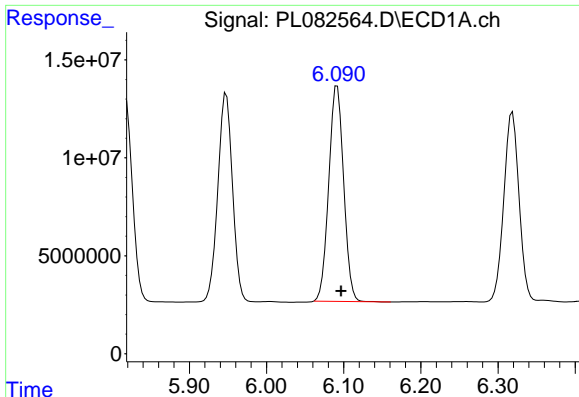
#12 4,4'-DDE

R.T.: 5.948 min
 Delta R.T.: -0.005 min
 Response: 140120355
 Conc: 55.12 ng/ml



#12 4,4'-DDE

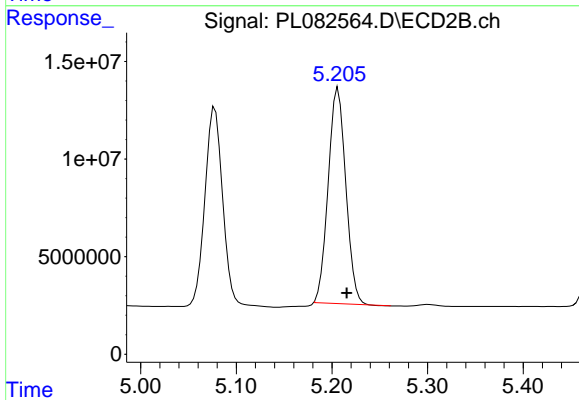
R.T.: 5.078 min
 Delta R.T.: -0.008 min
 Response: 129684741
 Conc: 56.41 ng/ml



#13 Dieldrin

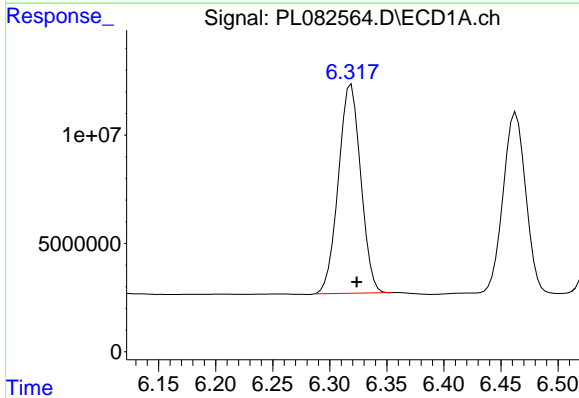
R.T.: 6.092 min
 Delta R.T.: -0.005 min
 Response: 148029255
 Conc: 53.65 ng/ml

Instrument :
 ECD_L
 ClientSampleId :



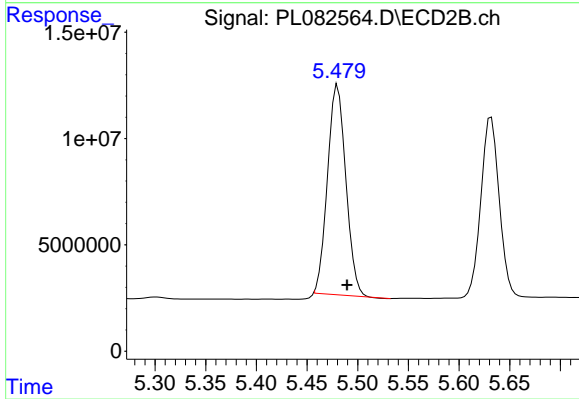
#13 Dieldrin

R.T.: 5.207 min
 Delta R.T.: -0.009 min
 Response: 140899390
 Conc: 52.18 ng/ml



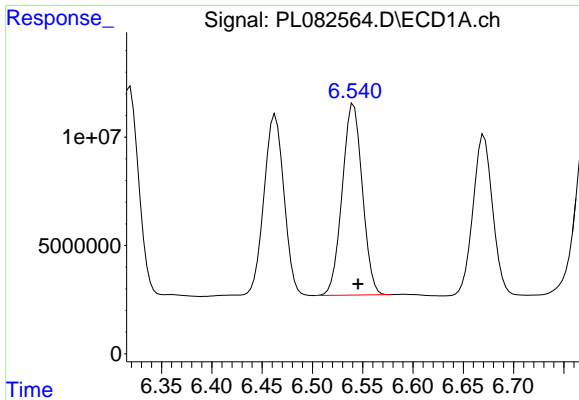
#14 Endrin

R.T.: 6.319 min
 Delta R.T.: -0.005 min
 Response: 131402770
 Conc: 54.20 ng/ml



#14 Endrin

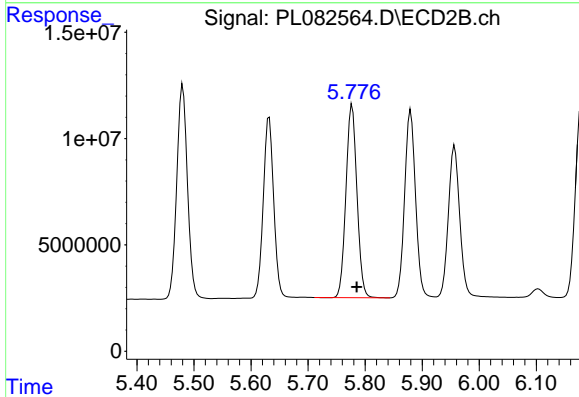
R.T.: 5.480 min
 Delta R.T.: -0.009 min
 Response: 124752606
 Conc: 51.00 ng/ml



#15 Endosulfan II

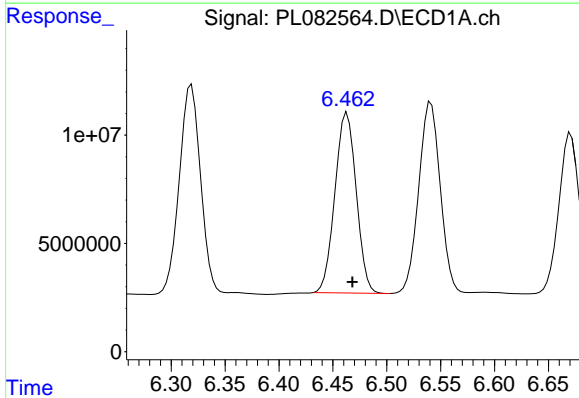
R.T.: 6.541 min
Delta R.T.: -0.004 min
Response: 122591584
Conc: 50.35 ng/ml

Instrument :
ECD_L
ClientSampleId :



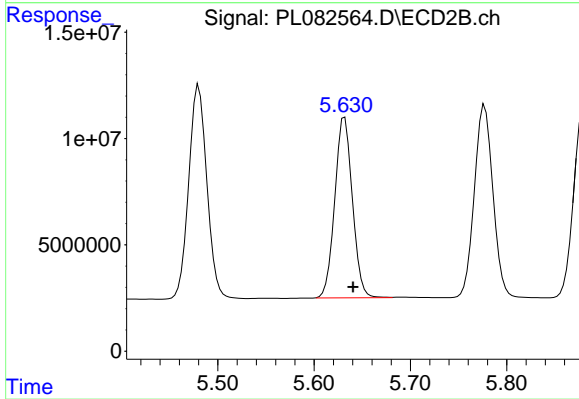
#15 Endosulfan II

R.T.: 5.777 min
Delta R.T.: -0.008 min
Response: 121978156
Conc: 54.11 ng/ml



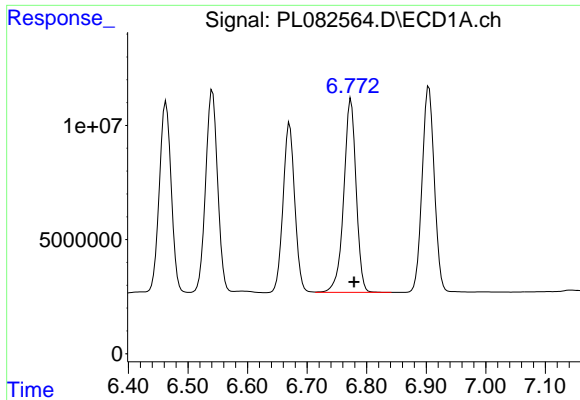
#16 4,4'-DDD

R.T.: 6.463 min
Delta R.T.: -0.005 min
Response: 114539249
Conc: 56.50 ng/ml



#16 4,4'-DDD

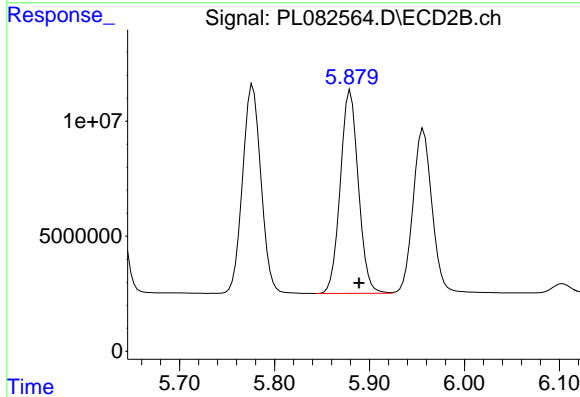
R.T.: 5.632 min
Delta R.T.: -0.009 min
Response: 107772259
Conc: 57.62 ng/ml



#17 4,4'-DDT

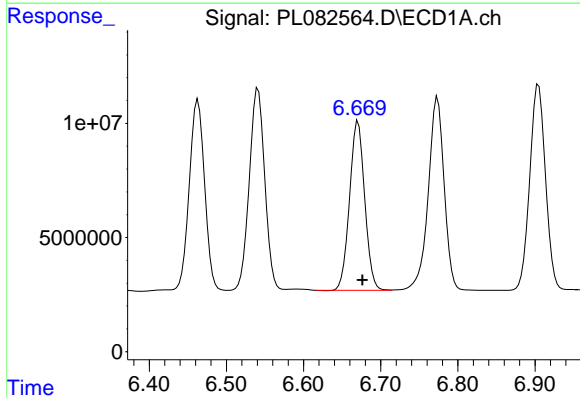
R.T.: 6.774 min
 Delta R.T.: -0.005 min
 Response: 121797582
 Conc: 53.24 ng/ml

Instrument :
 ECD_L
 ClientSampleId :



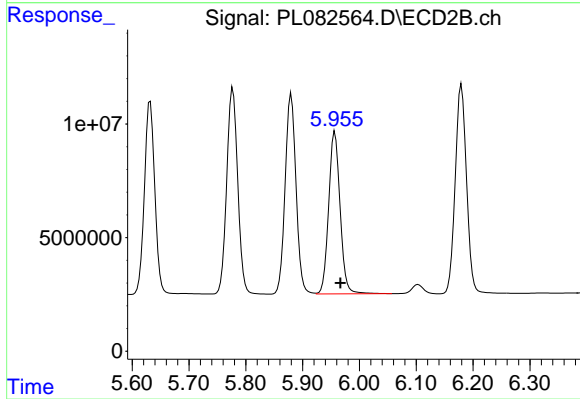
#17 4,4'-DDT

R.T.: 5.880 min
 Delta R.T.: -0.009 min
 Response: 116903075
 Conc: 55.34 ng/ml



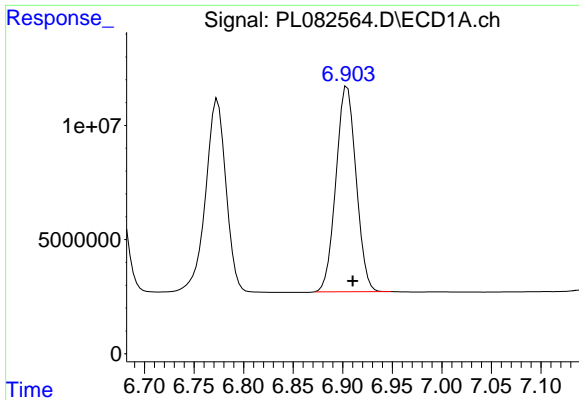
#18 Endrin aldehyde

R.T.: 6.671 min
 Delta R.T.: -0.006 min
 Response: 100767279
 Conc: 53.48 ng/ml



#18 Endrin aldehyde

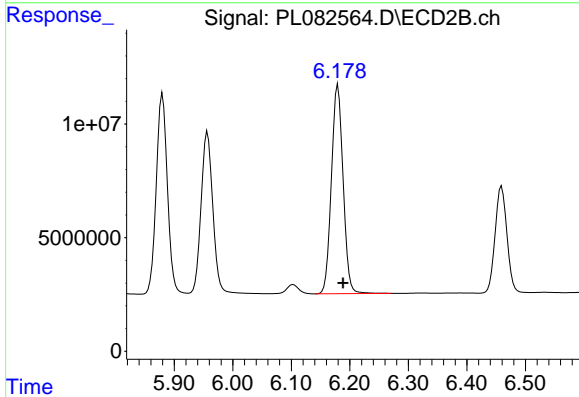
R.T.: 5.957 min
 Delta R.T.: -0.010 min
 Response: 99858506
 Conc: 53.36 ng/ml



#19 Endosulfan Sulfate

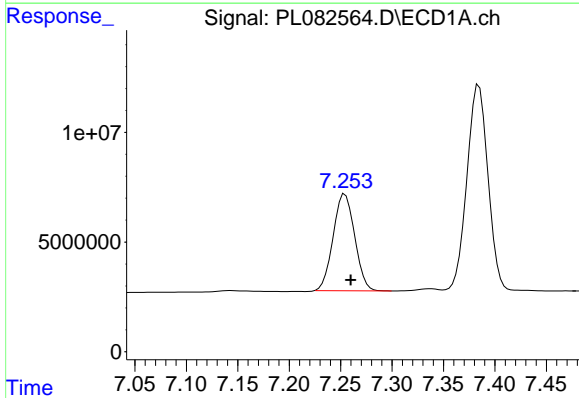
R.T.: 6.905 min
 Delta R.T.: -0.006 min
 Response: 127281739
 Conc: 53.67 ng/ml

Instrument :
 ECD_L
 ClientSampleId :



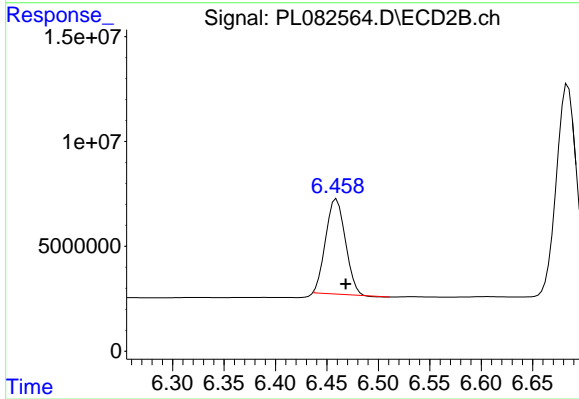
#19 Endosulfan Sulfate

R.T.: 6.180 min
 Delta R.T.: -0.009 min
 Response: 127298109
 Conc: 54.07 ng/ml



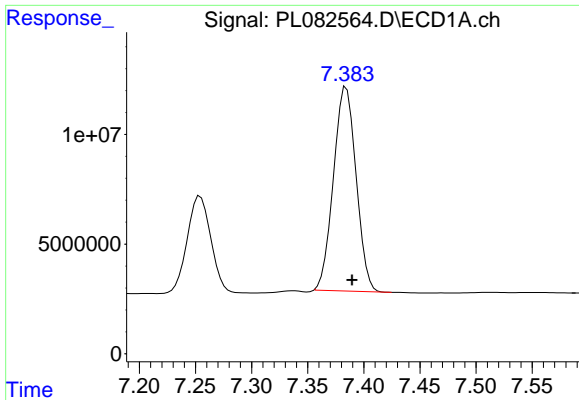
#20 Methoxychlor

R.T.: 7.254 min
 Delta R.T.: -0.005 min
 Response: 64256507
 Conc: 52.65 ng/ml



#20 Methoxychlor

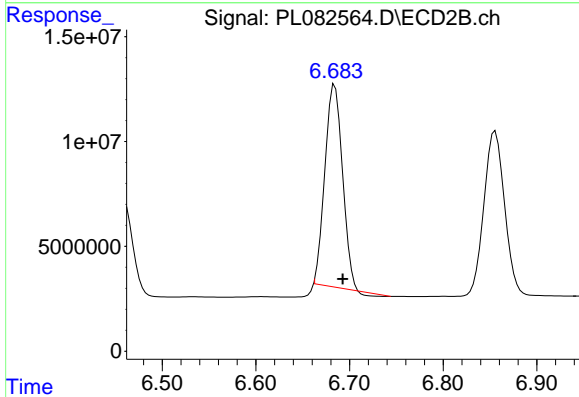
R.T.: 6.459 min
 Delta R.T.: -0.009 min
 Response: 60397245
 Conc: 49.84 ng/ml



#21 Endrin ketone

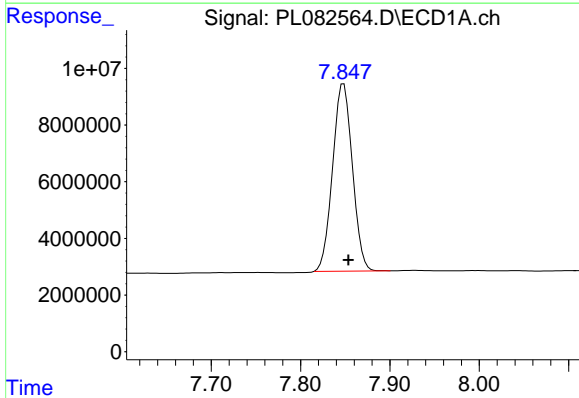
R.T.: 7.384 min
 Delta R.T.: -0.005 min
 Response: 130530209
 Conc: 54.51 ng/ml

Instrument :
 ECD_L
 ClientSampleId :



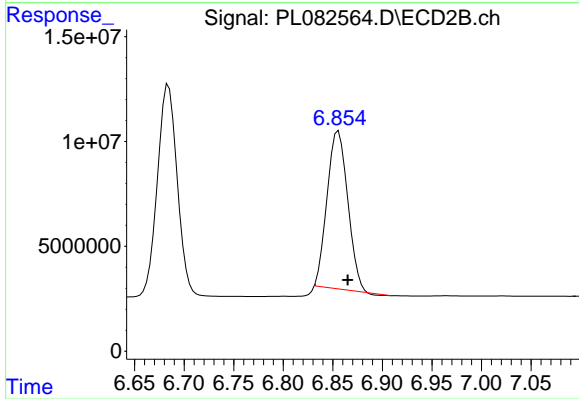
#21 Endrin ketone

R.T.: 6.684 min
 Delta R.T.: -0.009 min
 Response: 125047507
 Conc: 49.27 ng/ml



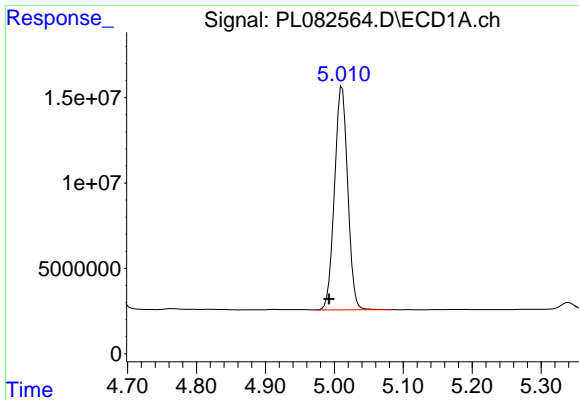
#22 Mirex

R.T.: 7.848 min
 Delta R.T.: -0.005 min
 Response: 101866017
 Conc: 52.07 ng/ml



#22 Mirex

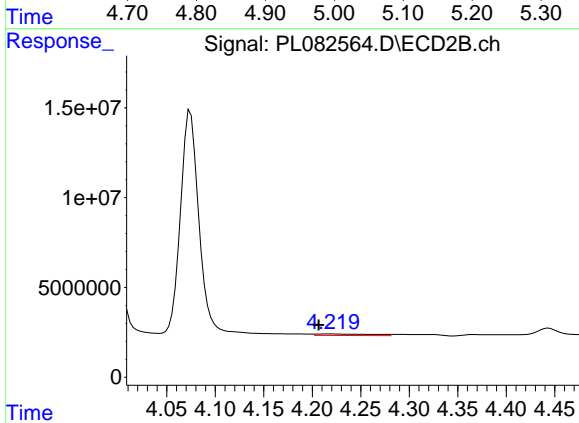
R.T.: 6.856 min
 Delta R.T.: -0.009 min
 Response: 108068387
 Conc: 46.90 ng/ml



#24 Chlordane-2

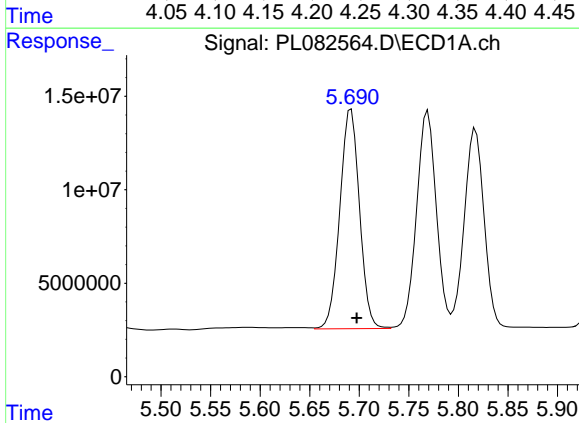
R.T.: 5.011 min
 Delta R.T.: 0.019 min
 Response: 174276979
 Conc: 1463.87 ng/ml

Instrument :
 ECD_L
 ClientSampleId :



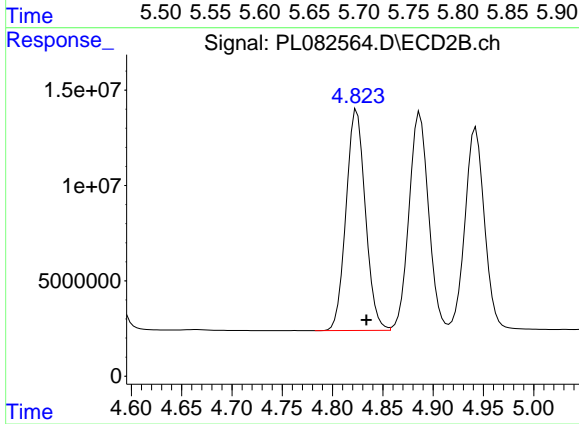
#24 Chlordane-2

R.T.: 4.219 min
 Delta R.T.: 0.012 min
 Response: 3462820
 Conc: 30.88 ng/ml



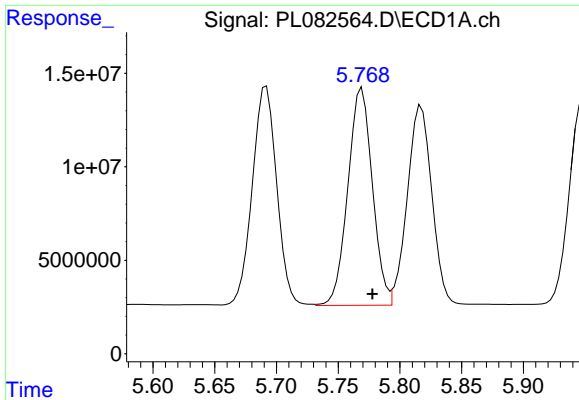
#25 Chlordane-3

R.T.: 5.692 min
 Delta R.T.: -0.006 min
 Response: 162435738
 Conc: 376.27 ng/ml



#25 Chlordane-3

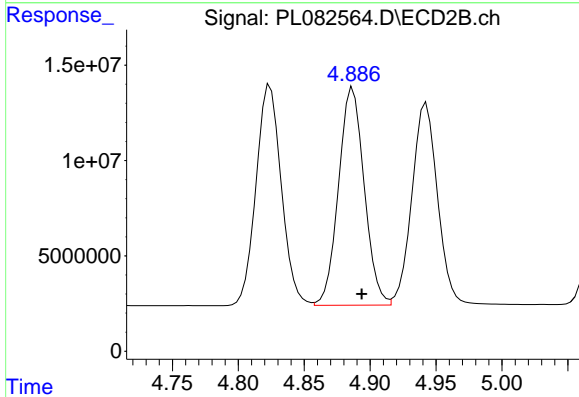
R.T.: 4.824 min
 Delta R.T.: -0.010 min
 Response: 154500598
 Conc: 543.81 ng/ml



#26 Chlordane-4

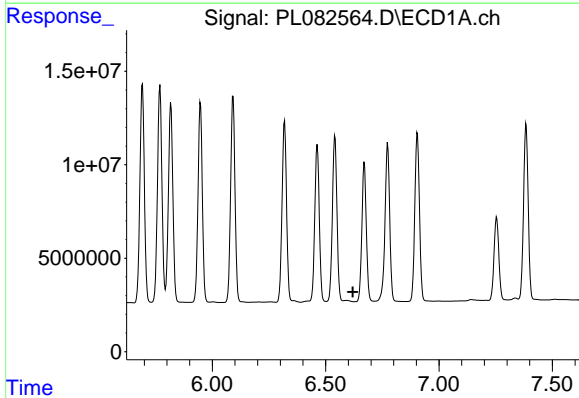
R.T.: 5.769 min
 Delta R.T.: -0.008 min
 Response: 160726047
 Conc: 309.14 ng/ml

Instrument :
 ECD_L
 ClientSampleId :



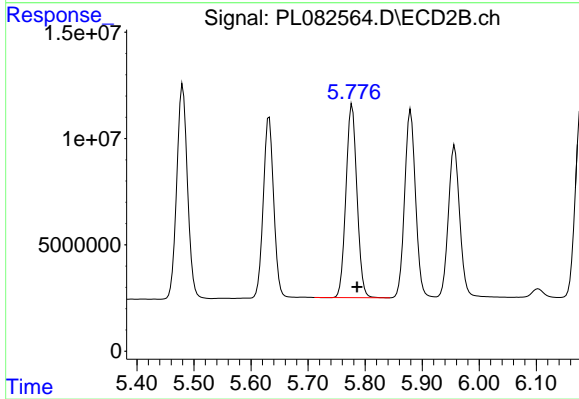
#26 Chlordane-4

R.T.: 4.887 min
 Delta R.T.: -0.007 min
 Response: 154263537
 Conc: 516.96 ng/ml



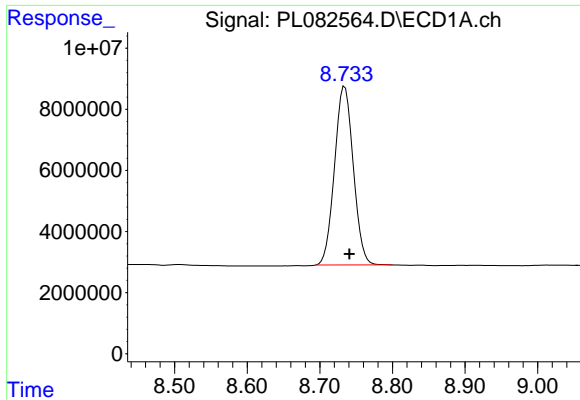
#27 Chlordane-5

R.T.: 0.000 min
 Exp R.T. : 6.619 min
 Response: 0
 Conc: N.D.



#27 Chlordane-5

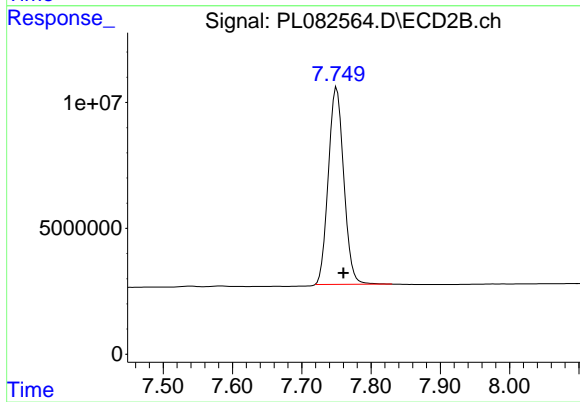
R.T.: 5.777 min
 Delta R.T.: -0.009 min
 Response: 121978156
 Conc: 1235.69 ng/ml



#28 Decachlorobiphenyl

R.T.: 8.734 min
Delta R.T.: -0.007 min
Response: 105087360
Conc: 55.05 ng/ml

Instrument :
ECD_L
ClientSampleId :



#28 Decachlorobiphenyl

R.T.: 7.751 min
Delta R.T.: -0.009 min
Response: 121416486
Conc: 53.19 ng/ml