

Data Path : Z:\pestpcbsrv\HPCHEM1\ECD_L\Data\PL050619\
 Data File : PL048215.D
 Signal(s) : Signal #1: ECD1A.ch Signal #2: ECD2B.ch
 Acq On : 06 May 2019 15:35
 Operator : AJ\SJ
 Sample : PB119478TB
 Misc :
 ALS Vial : 9 Sample Multiplier: 1

Instrument :
 ECD_L
 ClientSampleId :
 PB119478TB

Integration File signal 1: autoint1.e
 Integration File signal 2: autoint2.e
 Quant Time: May 07 00:46:30 2019
 Quant Method : Z:\pestpcbsrv\HPCHEM1\ECD_L\methods\PL050119.M
 Quant Title : GC Extractables
 QLast Update : Thu May 02 09:36:55 2019
 Response via : Initial Calibration
 Integrator: ChemStation

Volume Inj. : 1 µl
 Signal #1 Phase : ZB-MR2 Signal #2 Phase: ZB-MR1
 Signal #1 Info : 30M x 0.32mm x0.2 Signal #2 Info : 30M x 0.32mm x0.5µm

Compound	RT#1	RT#2	Resp#1	Resp#2	ng/ml	ng/ml

System Monitoring Compounds						
1) SA Tetrachlo...	3.328	3.940	202.6E6	53216691	20.920	21.365
28) SA Decachlor...	7.998	8.978	202.1E6	56244459	20.101	21.190

Target Compounds

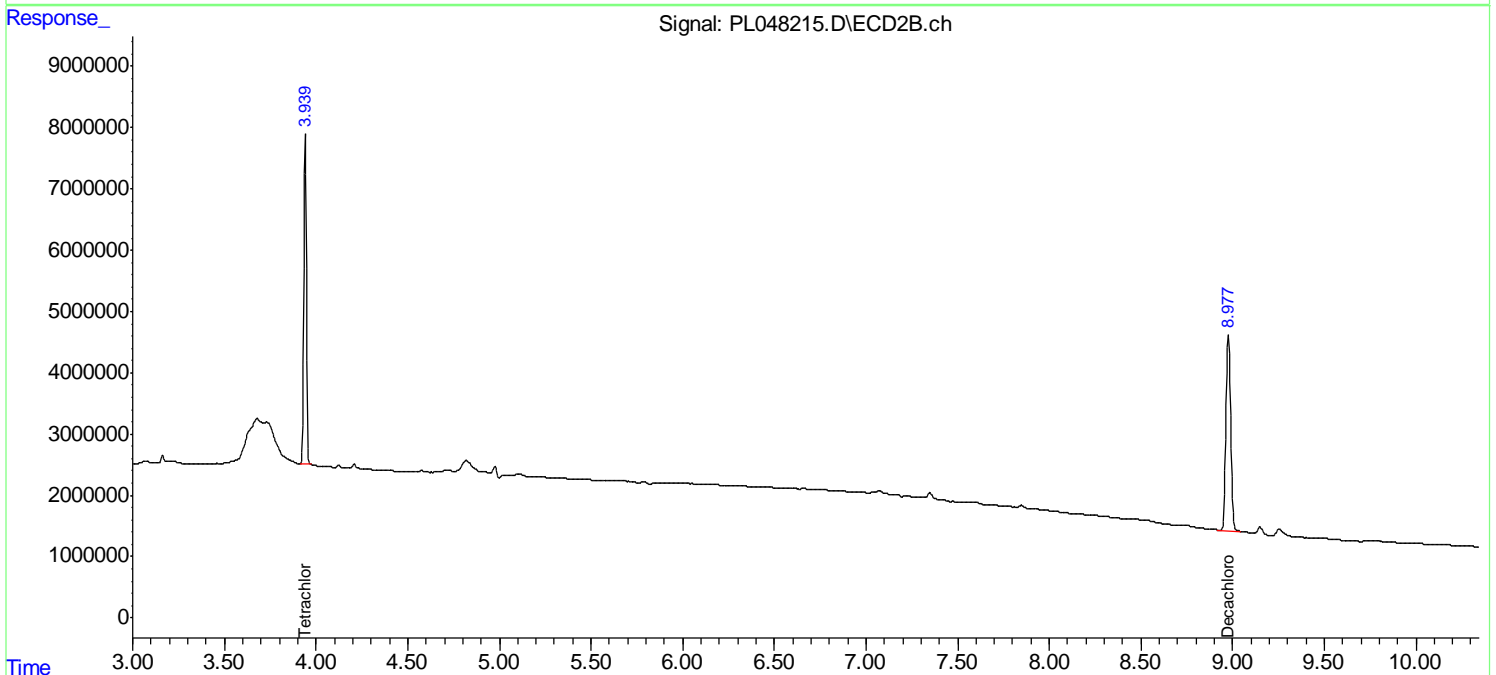
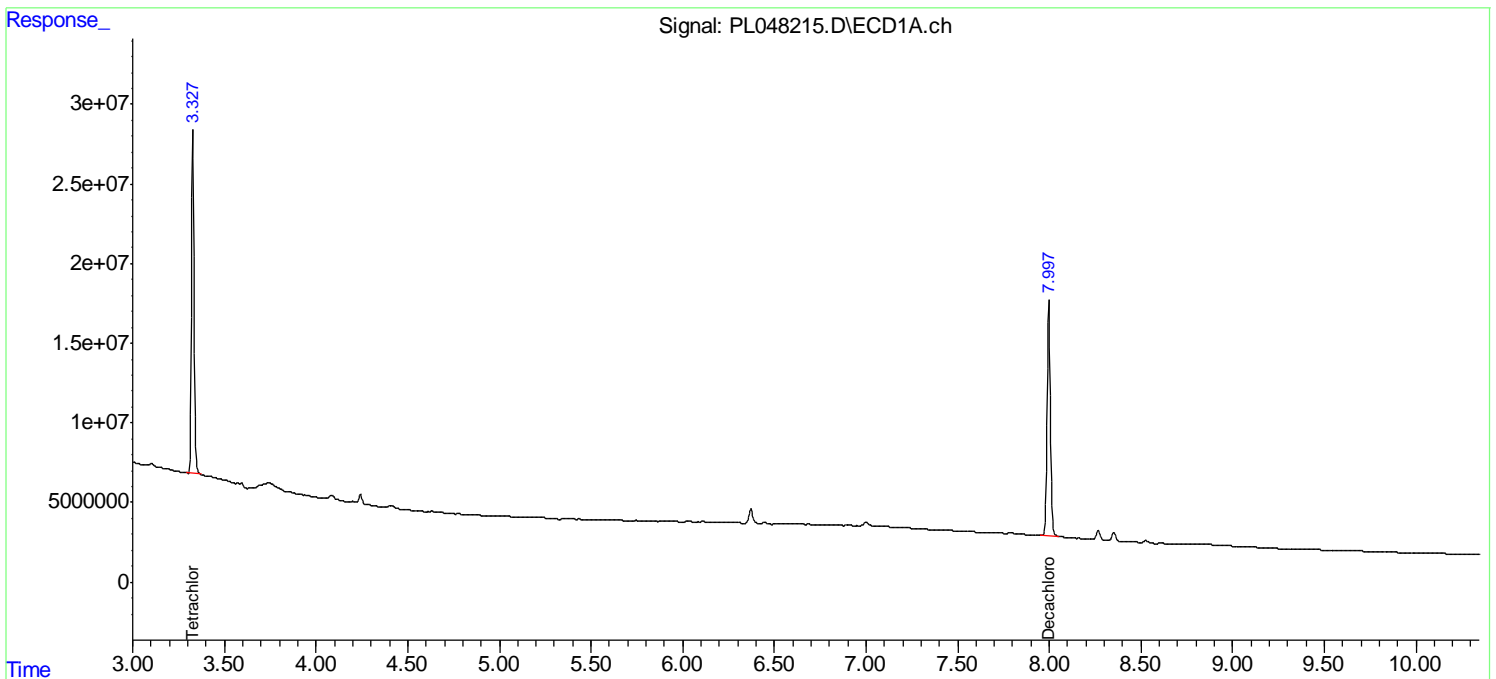
(f)=RT Delta > 1/2 Window (#)=Amounts differ by > 25% (m)=manual int.

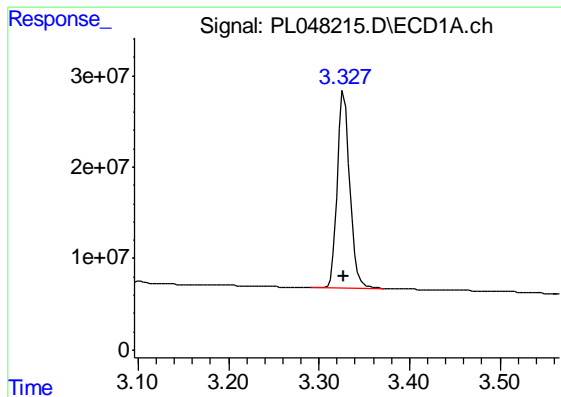
Data Path : Z:\pestpcbsrv\HPCHEM1\ECD_L\Data\PL050619\
 Data File : PL048215.D
 Signal(s) : Signal #1: ECD1A.ch Signal #2: ECD2B.ch
 Acq On : 06 May 2019 15:35
 Operator : AJ\SJ
 Sample : PB119478TB
 Misc :
 ALS Vial : 9 Sample Multiplier: 1

Instrument :
 ECD_L
 ClientSampleId :
 PB119478TB

Integration File signal 1: autoint1.e
 Integration File signal 2: autoint2.e
 Quant Time: May 07 00:46:30 2019
 Quant Method : Z:\pestpcbsrv\HPCHEM1\ECD_L\methods\PL050119.M
 Quant Title : GC Extractables
 QLast Update : Thu May 02 09:36:55 2019
 Response via : Initial Calibration
 Integrator: ChemStation

Volume Inj. : 1 µl
 Signal #1 Phase : ZB-MR2 Signal #2 Phase: ZB-MR1
 Signal #1 Info : 30M x 0.32mm x0.2 Signal #2 Info : 30M x 0.32mm x0.5µm

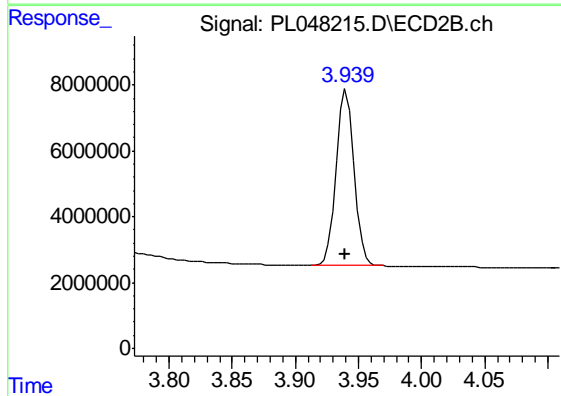




#1 Tetrachloro-m-xylene

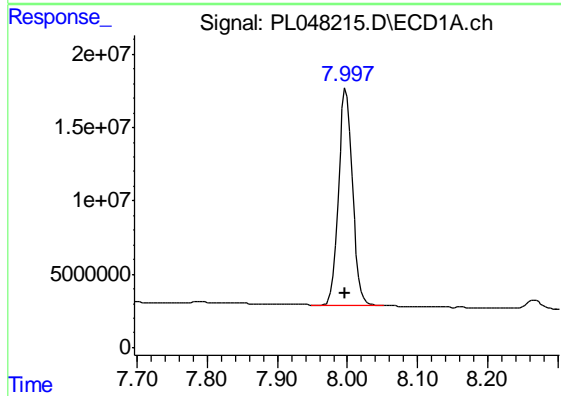
R.T.: 3.328 min
 Delta R.T.: 0.000 min
 Response: 202645745
 Conc: 20.92 ng/ml

Instrument :
 ECD_L
 ClientSampleId :
 PB119478TB



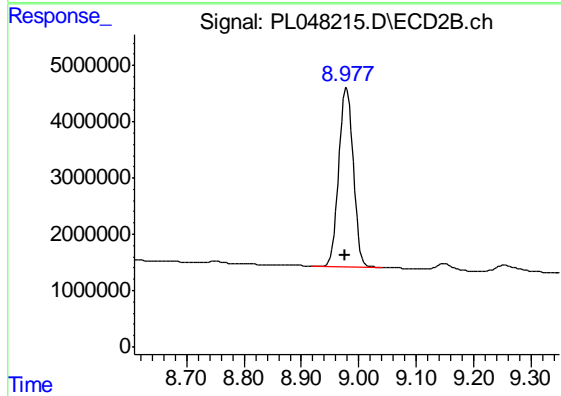
#1 Tetrachloro-m-xylene

R.T.: 3.940 min
 Delta R.T.: 0.000 min
 Response: 53216691
 Conc: 21.36 ng/ml



#28 Decachlorobiphenyl

R.T.: 7.998 min
 Delta R.T.: 0.002 min
 Response: 202098461
 Conc: 20.10 ng/ml



#28 Decachlorobiphenyl

R.T.: 8.978 min
 Delta R.T.: 0.003 min
 Response: 56244459
 Conc: 21.19 ng/ml