

Data Path : Z:\pestpcbsrv\HPCHEM1\ECD\_L\Data\PL050619\  
 Data File : PL048227.D  
 Signal(s) : Signal #1: ECD1A.ch Signal #2: ECD2B.ch  
 Acq On : 06 May 2019 18:35  
 Operator : AJ\SJ  
 Sample : PSTDCCC050  
 Misc :  
 ALS Vial : 4 Sample Multiplier: 1

Instrument :  
 ECD\_L  
 ClientSampleId :  
 PSTDCCC050

Integration File signal 1: autoint1.e  
 Integration File signal 2: autoint2.e  
 Quant Time: May 07 00:49:33 2019  
 Quant Method : Z:\pestpcbsrv\HPCHEM1\ECD\_L\methods\PL050119.M  
 Quant Title : GC Extractables  
 QLast Update : Thu May 02 09:36:55 2019  
 Response via : Initial Calibration  
 Integrator: ChemStation

Volume Inj. : 1 µl  
 Signal #1 Phase : ZB-MR2 Signal #2 Phase: ZB-MR1  
 Signal #1 Info : 30M x 0.32mm x0.2 Signal #2 Info : 30M x 0.32mm x0.5µm

Compound	RT#1	RT#2	Resp#1	Resp#2	ng/ml	ng/ml
-----						
System Monitoring Compounds						
1) SA Tetrachlo...	3.328	3.941	509.7E6	132.2E6	52.616	53.077
28) SA Decachlor...	7.997	8.978	480.6E6	129.2E6	47.797	48.659
Target Compounds						
2) A alpha-BHC	3.756	4.329	841.0E6	191.2E6	54.371	54.432
3) MA gamma-BHC...	4.032	4.613	771.8E6	175.6E6	54.316	53.765
4) MA Heptachlor	4.317	5.116	778.2E6	179.8E6	52.896	51.927
5) MB Aldrin	4.556	5.419	734.3E6	164.9E6	53.590	53.247
6) B beta-BHC	4.285	4.787	308.6E6	79993759	52.295	51.409
7) B delta-BHC	4.479	5.001	768.1E6	163.5E6	54.405	57.814
8) B Heptachlor...	4.992	5.805	668.4E6	155.6E6	51.872	53.339
9) A Endosulfan I	5.323	6.161	620.0E6	144.5E6	51.537	51.106
10) B gamma-Chl...	5.215	6.040	697.0E6	159.0E6	52.204	51.632
11) B alpha-Chl...	5.271	6.112	676.9E6	157.0E6	51.777	51.163
12) B 4,4'-DDE	5.439	6.271	614.9E6	143.8E6	48.477	52.075
13) MA Dieldrin	5.563	6.417	699.2E6	151.6E6	53.698	51.663
14) MA Endrin	5.815	6.635	605.2E6	127.4E6	49.716	48.875
15) B Endosulfa...	6.089	6.845	579.5E6	133.8E6	50.218	49.631
16) A 4,4'-DDD	5.950	6.761	522.1E6	119.4E6	53.634	53.198
17) MA 4,4'-DDT	6.184	7.059	487.2E6	112.3E6	48.494	47.854
18) B Endrin al...	6.256	6.970	477.9E6	115.2E6	49.180	49.140
19) B Endosulfa...	6.468	7.192	528.9E6	128.1E6	49.276	49.489
20) A Methoxychlor	6.729	7.519	250.7E6	63970753	46.048	46.859
21) B Endrin ke...	6.950	7.661	594.8E6	132.8E6	51.035	50.814
22) Mirex	7.125	8.111	414.6E6	102.2E6	46.256	48.456
24) Chlordane-2	0.000	5.419f	0	164.9E6	N.D.	1274.841 #
25) Chlordane-3	5.215	6.040	697.0E6	159.0E6	442.689	362.726
26) Chlordane-4	5.271	6.112	676.9E6	157.0E6	466.245	299.240 #
27) Chlordane-5	6.089	0.000	579.5E6	0	1234.227	N.D. #

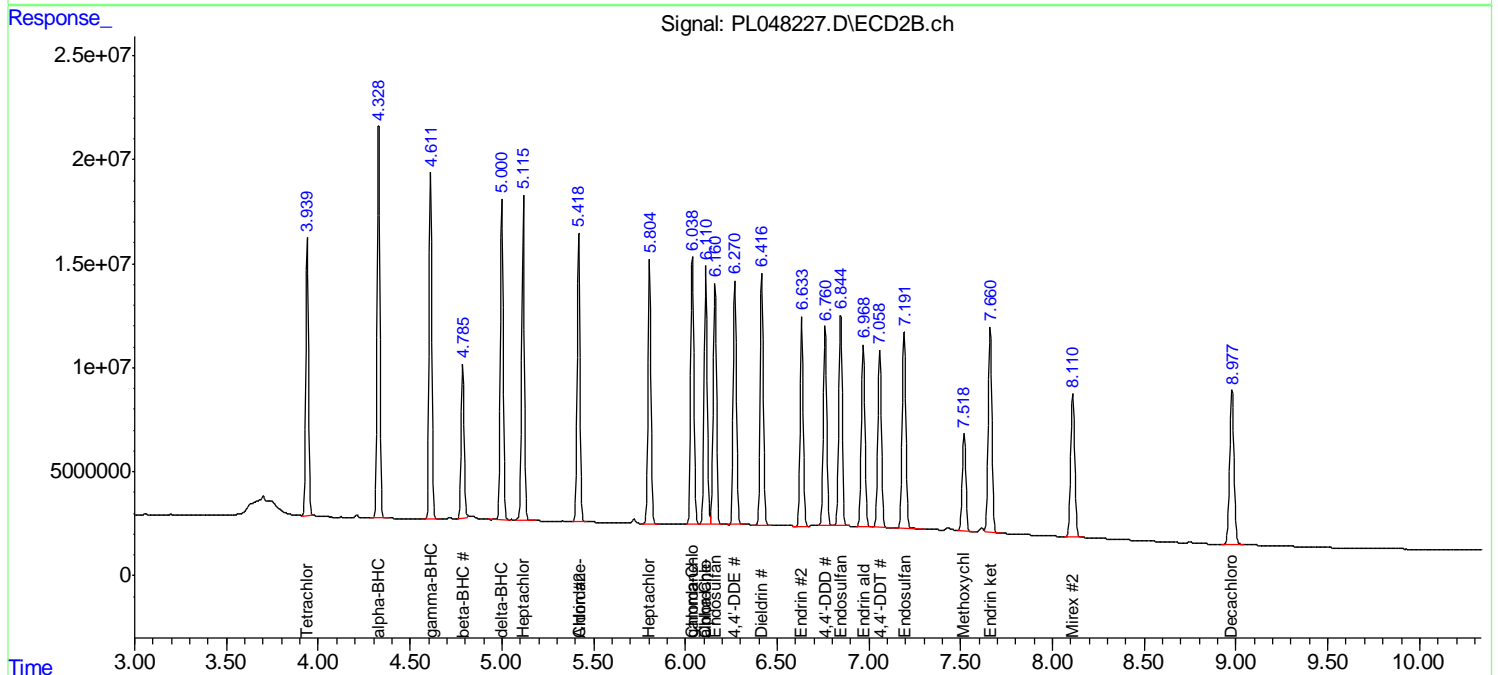
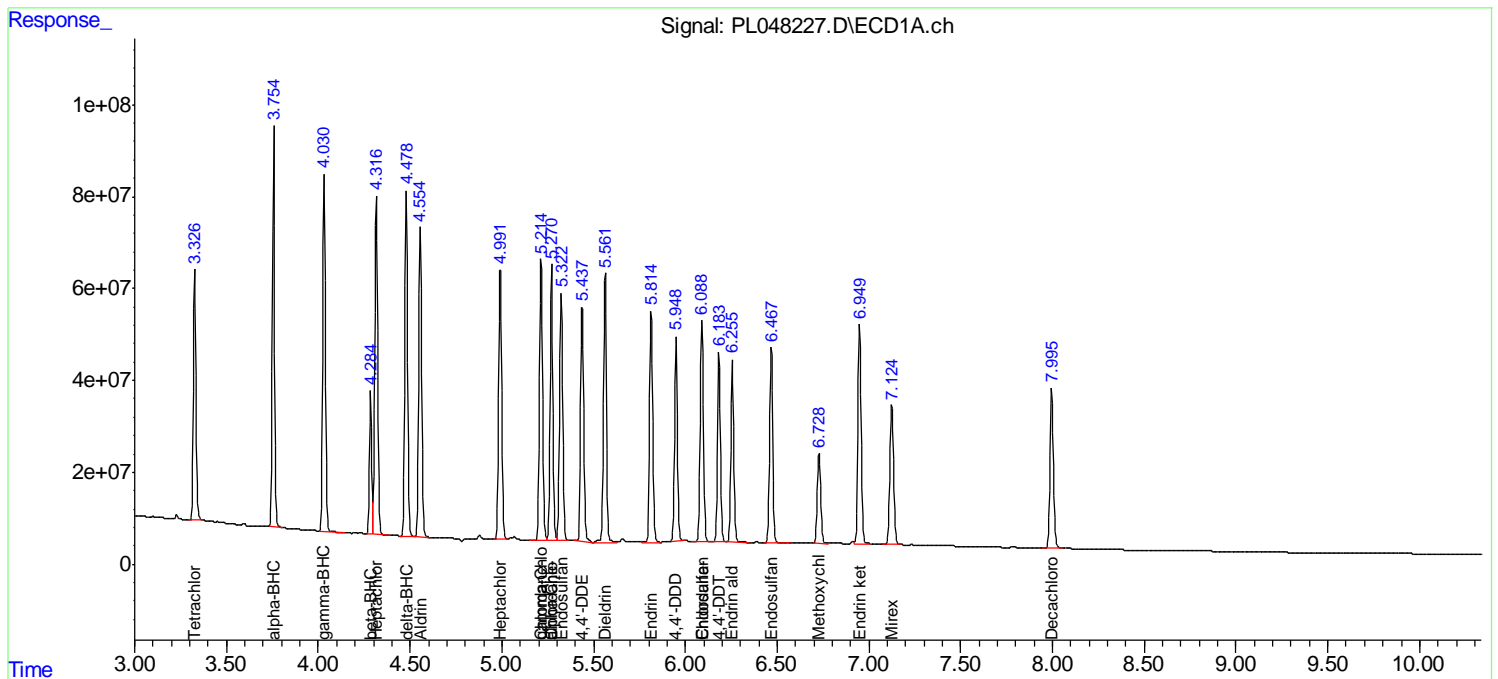
(f)=RT Delta > 1/2 Window (#)=Amounts differ by > 25% (m)=manual int.

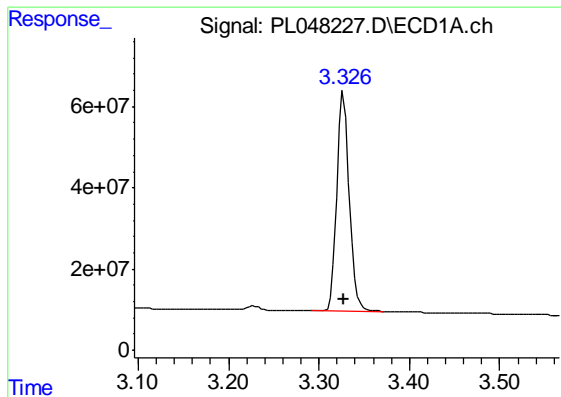
Data Path : Z:\pestpcbsrv\HPCHEM1\ECD\_L\Data\PL050619\  
 Data File : PL048227.D  
 Signal(s) : Signal #1: ECD1A.ch Signal #2: ECD2B.ch  
 Acq On : 06 May 2019 18:35  
 Operator : AJ\SJ  
 Sample : PSTDCCC050  
 Misc :  
 ALS Vial : 4 Sample Multiplier: 1

Instrument :  
 ECD\_L  
 Client Sampled :  
 PSTDCCC050

Integration File signal 1: autoint1.e  
 Integration File signal 2: autoint2.e  
 Quant Time: May 07 00:49:33 2019  
 Quant Method : Z:\pestpcbsrv\HPCHEM1\ECD\_L\methods\PL050119.M  
 Quant Title : GC Extractables  
 QLast Update : Thu May 02 09:36:55 2019  
 Response via : Initial Calibration  
 Integrator: ChemStation

Volume Inj. : 1 µl  
 Signal #1 Phase : ZB-MR2 Signal #2 Phase: ZB-MR1  
 Signal #1 Info : 30M x 0.32mm x0.2 Signal #2 Info : 30M x 0.32mm x0.5µm

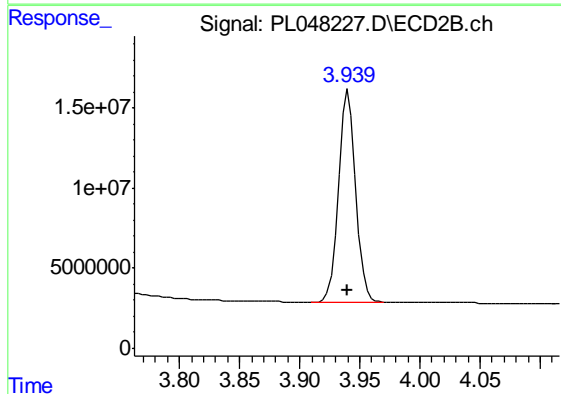




#1 Tetrachloro-m-xylene

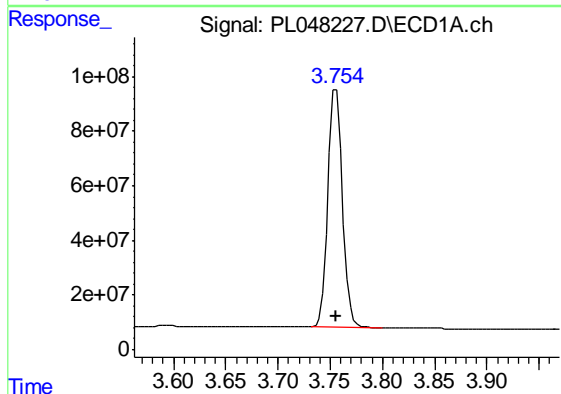
R.T.: 3.328 min  
Delta R.T.: 0.000 min  
Response: 509682051  
Conc: 52.62 ng/ml

Instrument :  
ECD\_L  
ClientSampleId :  
PSTDCCC050



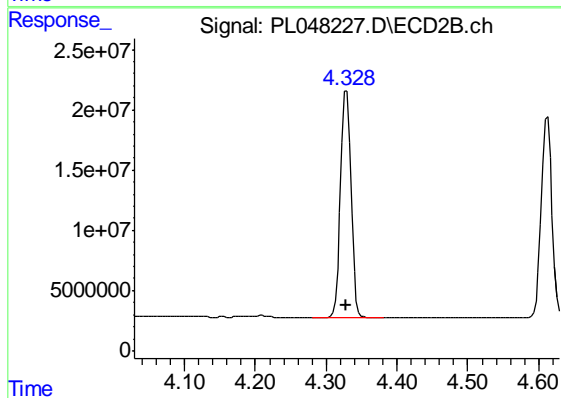
#1 Tetrachloro-m-xylene

R.T.: 3.941 min  
Delta R.T.: 0.000 min  
Response: 132209680  
Conc: 53.08 ng/ml



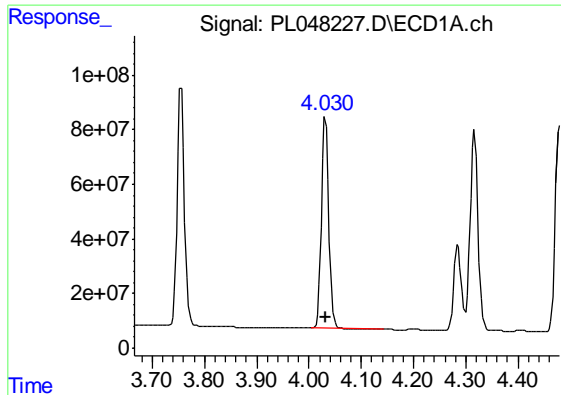
#2 alpha-BHC

R.T.: 3.756 min  
Delta R.T.: 0.000 min  
Response: 840987842  
Conc: 54.37 ng/ml



#2 alpha-BHC

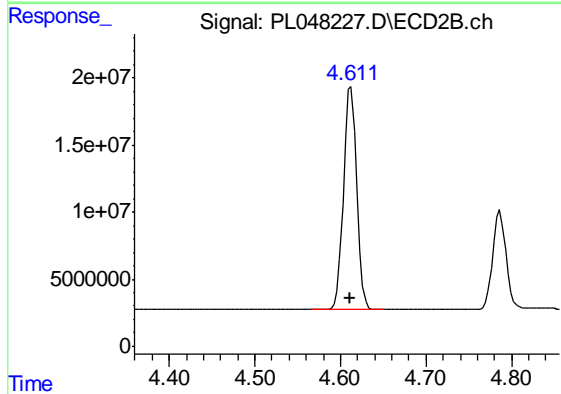
R.T.: 4.329 min  
Delta R.T.: 0.000 min  
Response: 191164886  
Conc: 54.43 ng/ml



#3 gamma-BHC (Lindane)

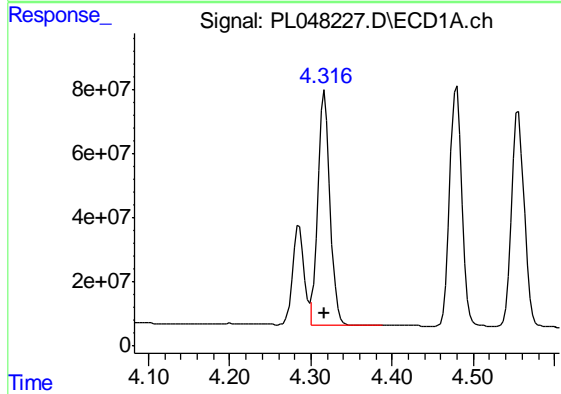
R.T.: 4.032 min  
 Delta R.T.: 0.000 min  
 Response: 771784861  
 Conc: 54.32 ng/ml

Instrument :  
 ECD\_L  
 ClientSampleId :  
 PSTDCCC050



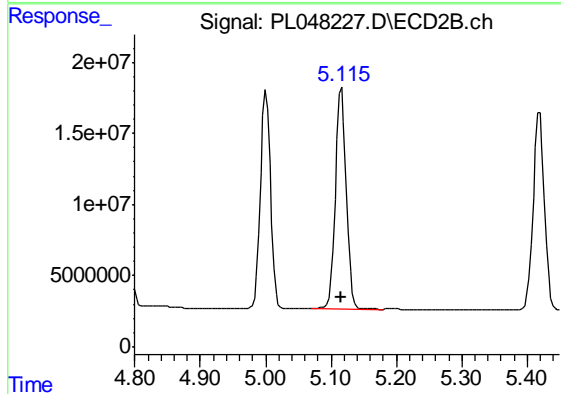
#3 gamma-BHC (Lindane)

R.T.: 4.613 min  
 Delta R.T.: 0.000 min  
 Response: 175604822  
 Conc: 53.76 ng/ml



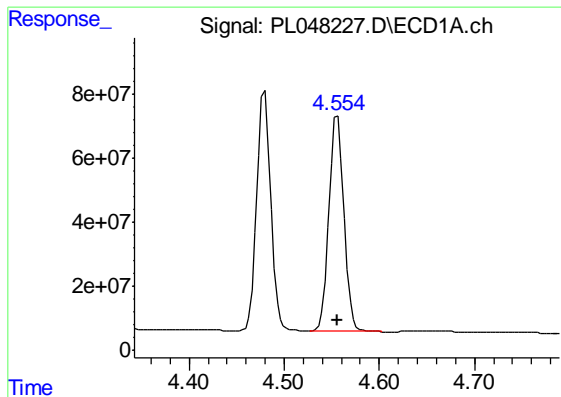
#4 Heptachlor

R.T.: 4.317 min  
 Delta R.T.: 0.000 min  
 Response: 778200348  
 Conc: 52.90 ng/ml



#4 Heptachlor

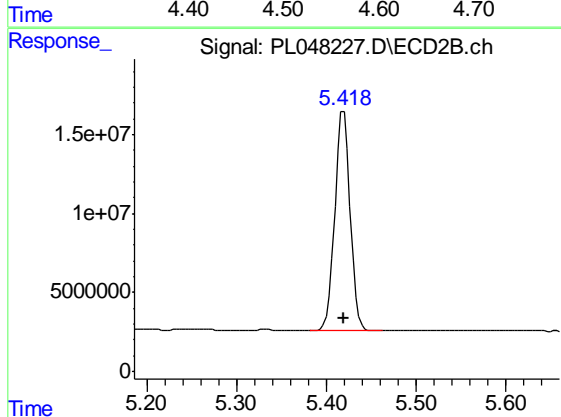
R.T.: 5.116 min  
 Delta R.T.: 0.000 min  
 Response: 179761921  
 Conc: 51.93 ng/ml



#5 Aldrin

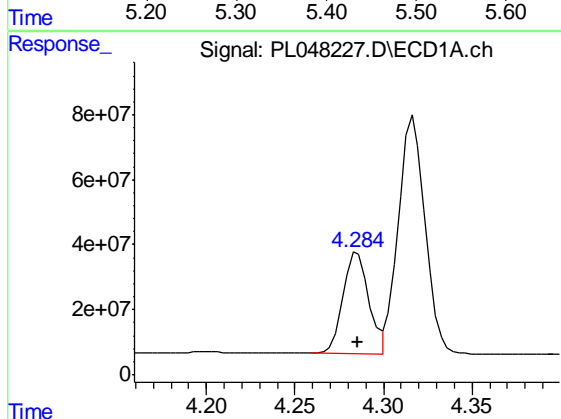
R.T.: 4.556 min  
 Delta R.T.: 0.000 min  
 Response: 734271169  
 Conc: 53.59 ng/ml

Instrument :  
 ECD\_L  
 ClientSampleId :  
 PSTDCCC050



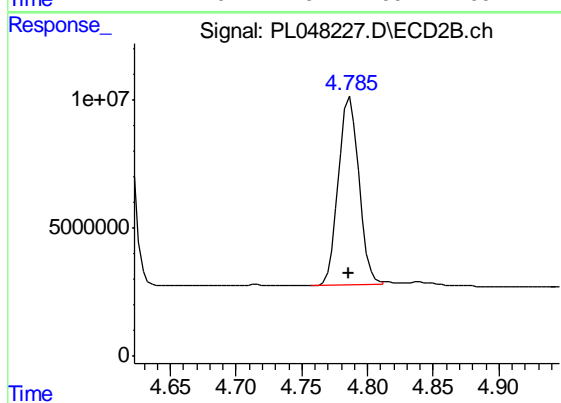
#5 Aldrin

R.T.: 5.419 min  
 Delta R.T.: 0.000 min  
 Response: 164886346  
 Conc: 53.25 ng/ml



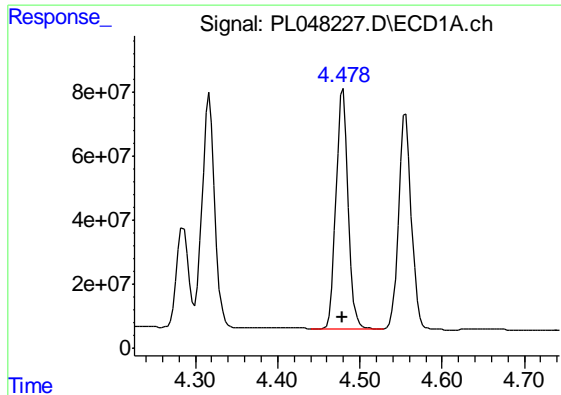
#6 beta-BHC

R.T.: 4.285 min  
 Delta R.T.: 0.000 min  
 Response: 308623307  
 Conc: 52.29 ng/ml



#6 beta-BHC

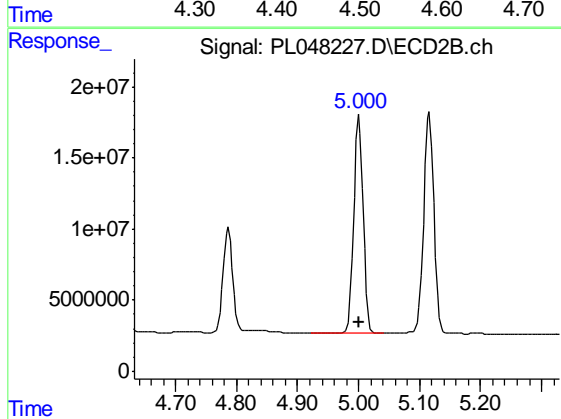
R.T.: 4.787 min  
 Delta R.T.: 0.000 min  
 Response: 79993759  
 Conc: 51.41 ng/ml



#7 delta-BHC

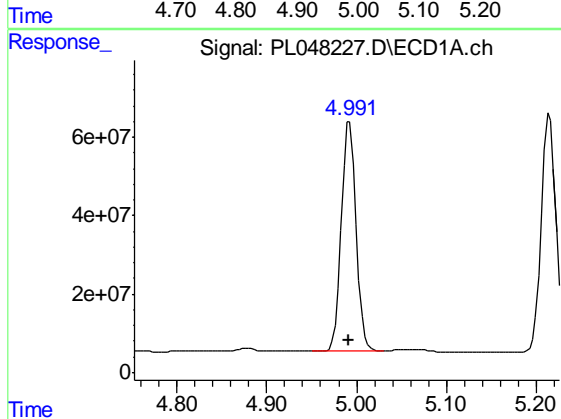
R.T.: 4.479 min  
 Delta R.T.: 0.000 min  
 Response: 768126863  
 Conc: 54.40 ng/ml

Instrument :  
 ECD\_L  
 ClientSampleId :  
 PSTDCCC050



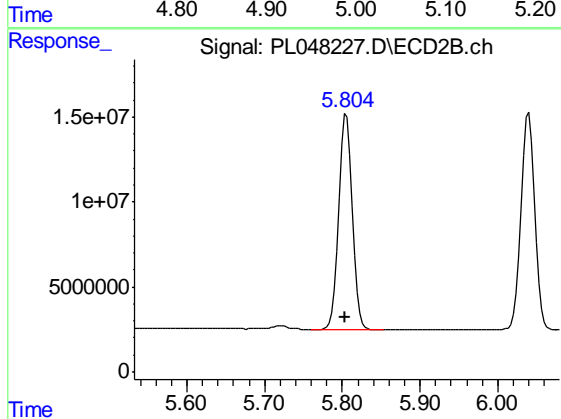
#7 delta-BHC

R.T.: 5.001 min  
 Delta R.T.: 0.000 min  
 Response: 163491190  
 Conc: 57.81 ng/ml



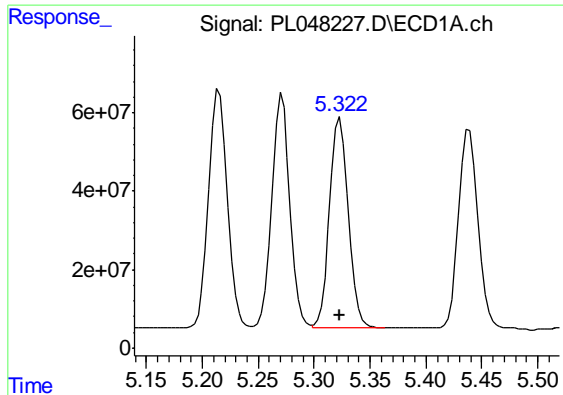
#8 Heptachlor epoxide

R.T.: 4.992 min  
 Delta R.T.: 0.000 min  
 Response: 668351243  
 Conc: 51.87 ng/ml



#8 Heptachlor epoxide

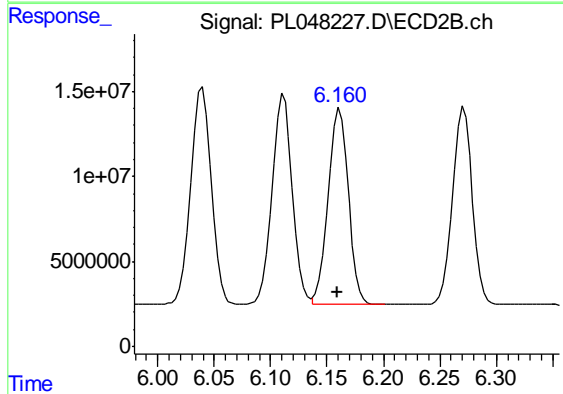
R.T.: 5.805 min  
 Delta R.T.: 0.001 min  
 Response: 155575671  
 Conc: 53.34 ng/ml



#9 Endosulfan I

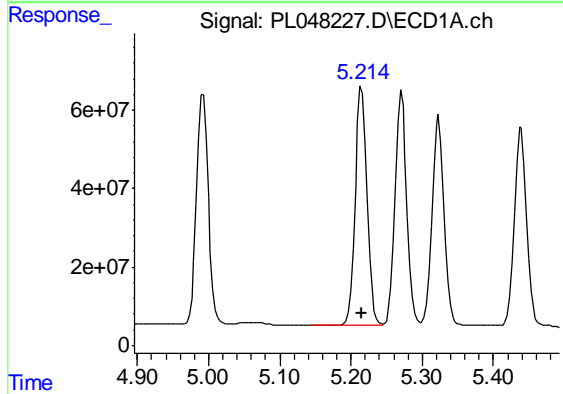
R.T.: 5.323 min  
 Delta R.T.: 0.000 min  
 Response: 619979532  
 Conc: 51.54 ng/ml

Instrument :  
 ECD\_L  
 ClientSampleId :  
 PSTDCCC050



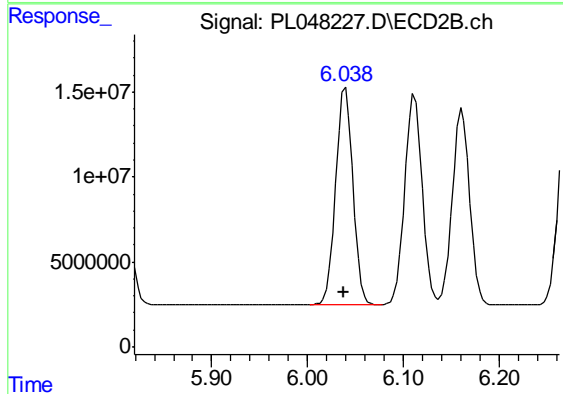
#9 Endosulfan I

R.T.: 6.161 min  
 Delta R.T.: 0.002 min  
 Response: 144500580  
 Conc: 51.11 ng/ml



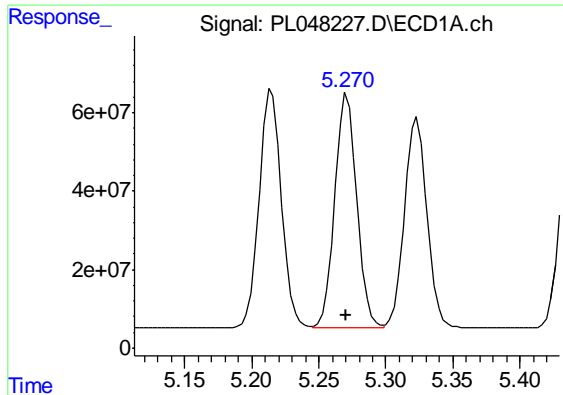
#10 gamma-Chlordane

R.T.: 5.215 min  
 Delta R.T.: 0.000 min  
 Response: 697039576  
 Conc: 52.20 ng/ml



#10 gamma-Chlordane

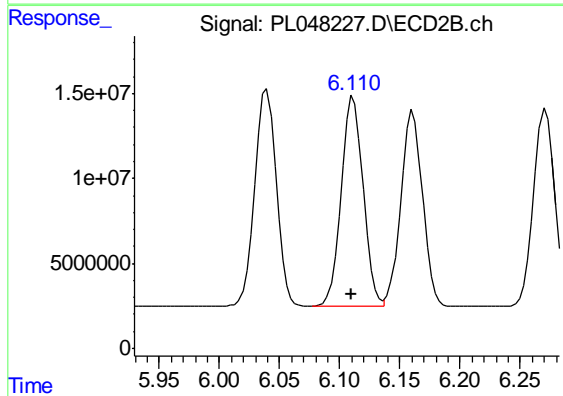
R.T.: 6.040 min  
 Delta R.T.: 0.001 min  
 Response: 158957817  
 Conc: 51.63 ng/ml



#11 alpha-Chlordane

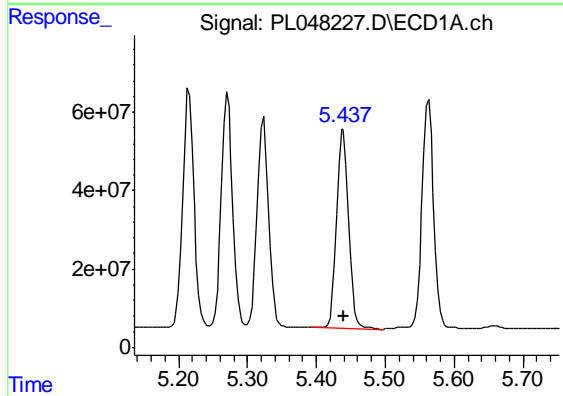
R.T.: 5.271 min  
 Delta R.T.: 0.000 min  
 Response: 676905398  
 Conc: 51.78 ng/ml

Instrument :  
 ECD\_L  
 ClientSampleId :  
 PSTDCCC050



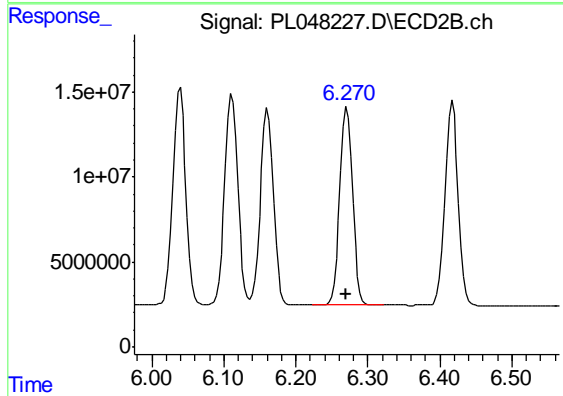
#11 alpha-Chlordane

R.T.: 6.112 min  
 Delta R.T.: 0.002 min  
 Response: 156981354  
 Conc: 51.16 ng/ml



#12 4,4'-DDE

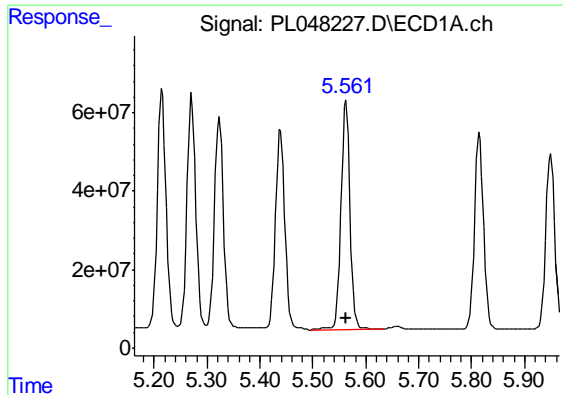
R.T.: 5.439 min  
 Delta R.T.: 0.000 min  
 Response: 614942324  
 Conc: 48.48 ng/ml



#12 4,4'-DDE

R.T.: 6.271 min  
 Delta R.T.: 0.002 min  
 Response: 143773943  
 Conc: 52.07 ng/ml

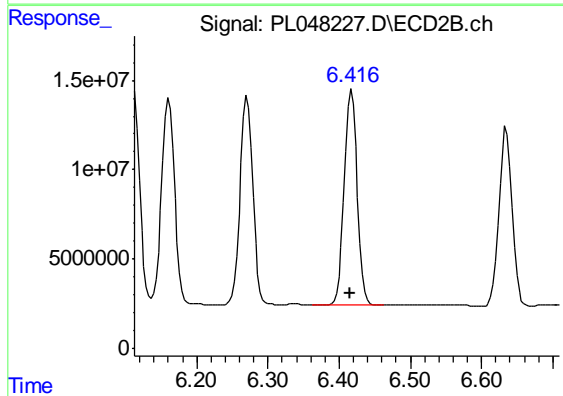




#13 Dieldrin

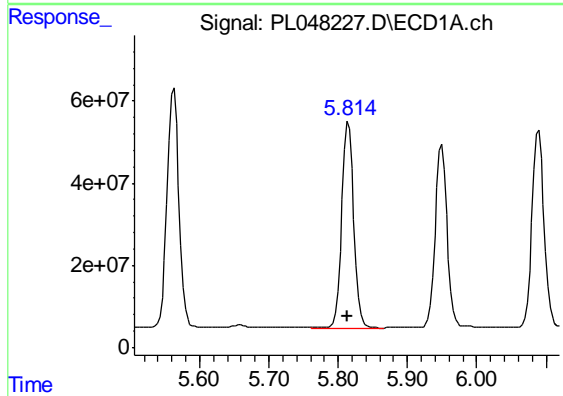
R.T.: 5.563 min  
 Delta R.T.: 0.000 min  
 Response: 699185113  
 Conc: 53.70 ng/ml

Instrument :  
 ECD\_L  
 ClientSampleId :  
 PSTDCCC050



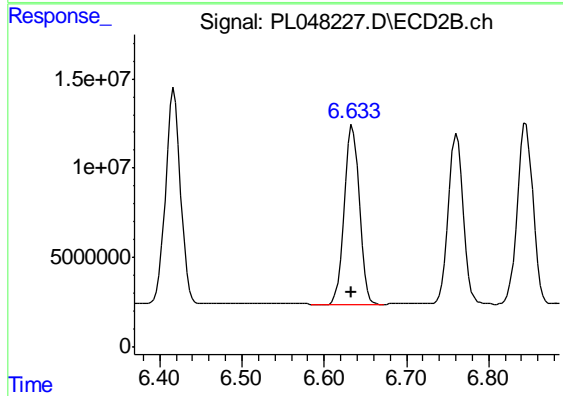
#13 Dieldrin

R.T.: 6.417 min  
 Delta R.T.: 0.002 min  
 Response: 151561739  
 Conc: 51.66 ng/ml



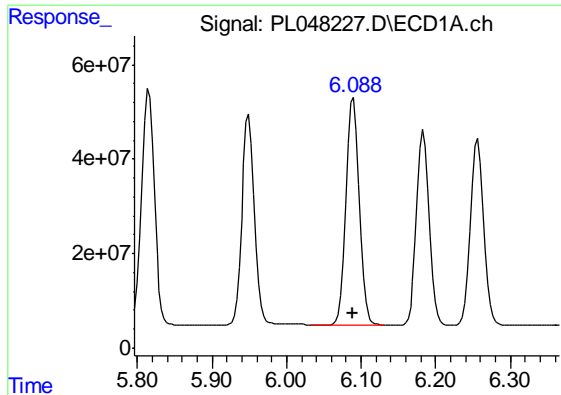
#14 Endrin

R.T.: 5.815 min  
 Delta R.T.: 0.000 min  
 Response: 605241984  
 Conc: 49.72 ng/ml



#14 Endrin

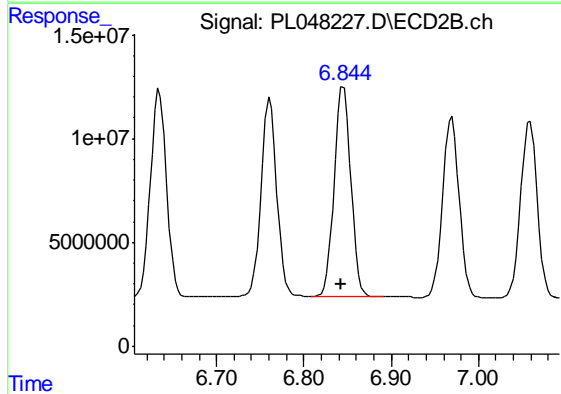
R.T.: 6.635 min  
 Delta R.T.: 0.002 min  
 Response: 127436332  
 Conc: 48.87 ng/ml



#15 Endosulfan II

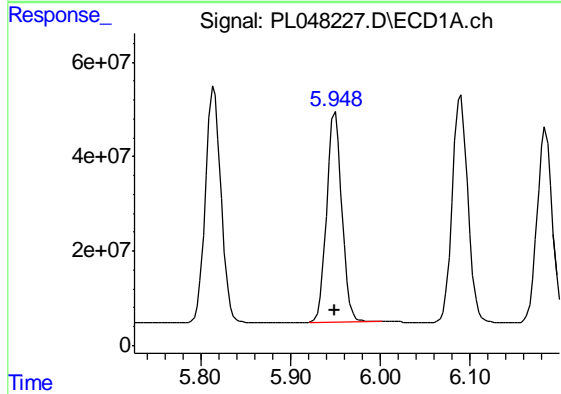
R.T.: 6.089 min  
Delta R.T.: 0.000 min  
Response: 579538719  
Conc: 50.22 ng/ml

Instrument :  
ECD\_L  
ClientSampleId :  
PSTDCCC050



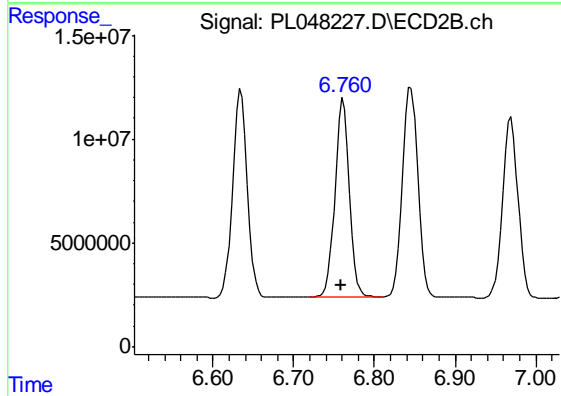
#15 Endosulfan II

R.T.: 6.845 min  
Delta R.T.: 0.002 min  
Response: 133835999  
Conc: 49.63 ng/ml



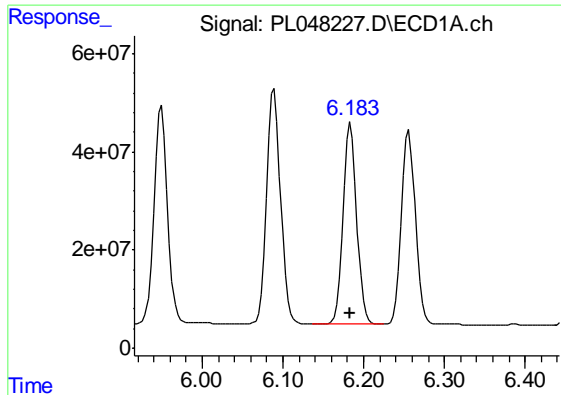
#16 4,4'-DDD

R.T.: 5.950 min  
Delta R.T.: 0.000 min  
Response: 522073296  
Conc: 53.63 ng/ml



#16 4,4'-DDD

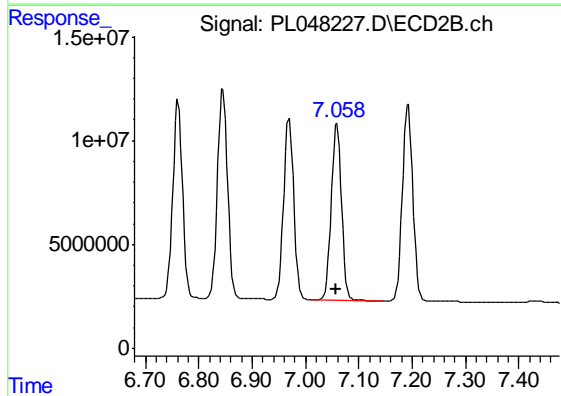
R.T.: 6.761 min  
Delta R.T.: 0.002 min  
Response: 119379536  
Conc: 53.20 ng/ml



#17 4,4'-DDT

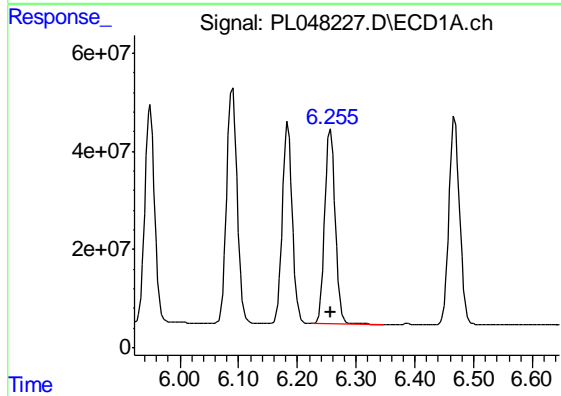
R.T.: 6.184 min  
 Delta R.T.: 0.000 min  
 Response: 487191751  
 Conc: 48.49 ng/ml

Instrument :  
 ECD\_L  
 ClientSampleId :  
 PSTDCCC050



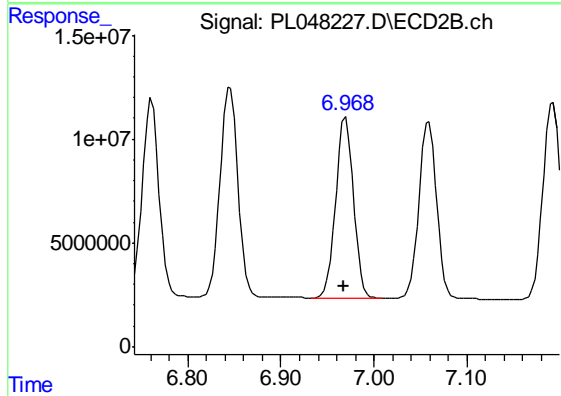
#17 4,4'-DDT

R.T.: 7.059 min  
 Delta R.T.: 0.003 min  
 Response: 112296228  
 Conc: 47.85 ng/ml



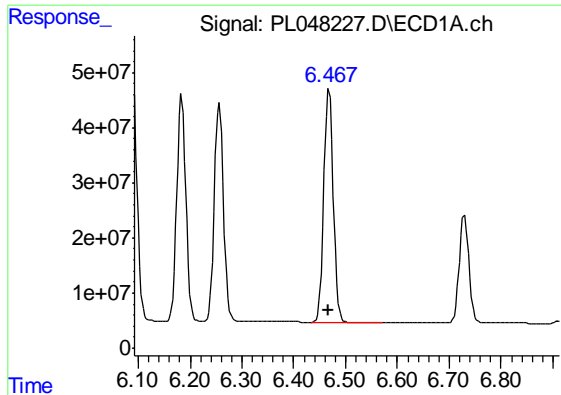
#18 Endrin aldehyde

R.T.: 6.256 min  
 Delta R.T.: 0.000 min  
 Response: 477947434  
 Conc: 49.18 ng/ml



#18 Endrin aldehyde

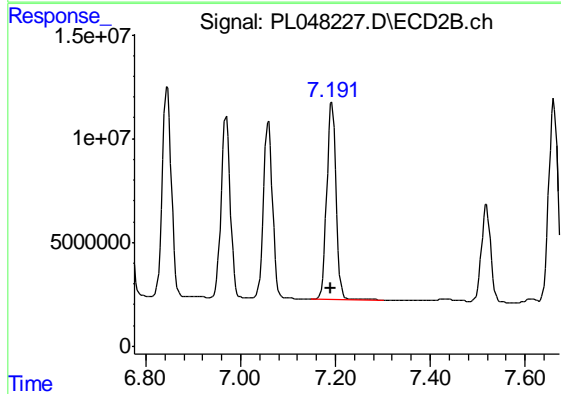
R.T.: 6.970 min  
 Delta R.T.: 0.002 min  
 Response: 115156488  
 Conc: 49.14 ng/ml



#19 Endosulfan Sulfate

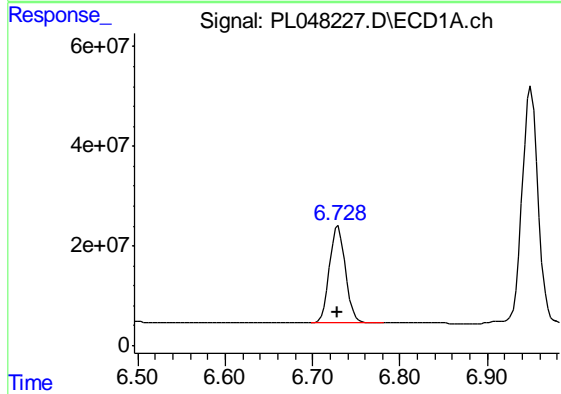
R.T.: 6.468 min  
 Delta R.T.: 0.000 min  
 Response: 528858874  
 Conc: 49.28 ng/ml

Instrument :  
 ECD\_L  
 ClientSampleId :  
 PSTDCCC050



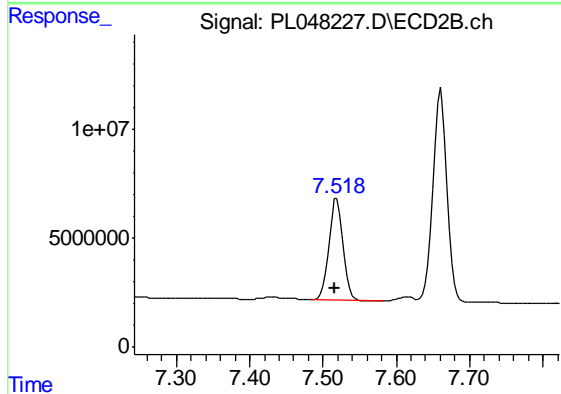
#19 Endosulfan Sulfate

R.T.: 7.192 min  
 Delta R.T.: 0.003 min  
 Response: 128087056  
 Conc: 49.49 ng/ml



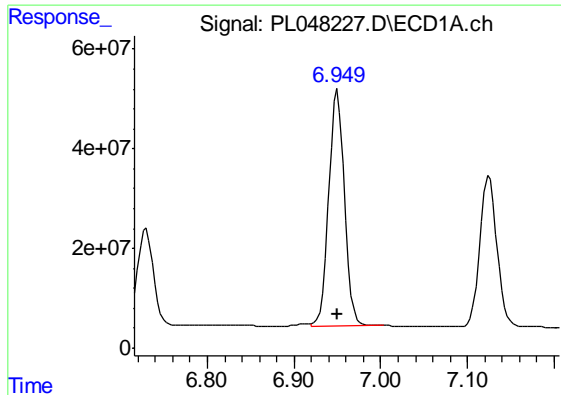
#20 Methoxychlor

R.T.: 6.729 min  
 Delta R.T.: 0.000 min  
 Response: 250719856  
 Conc: 46.05 ng/ml



#20 Methoxychlor

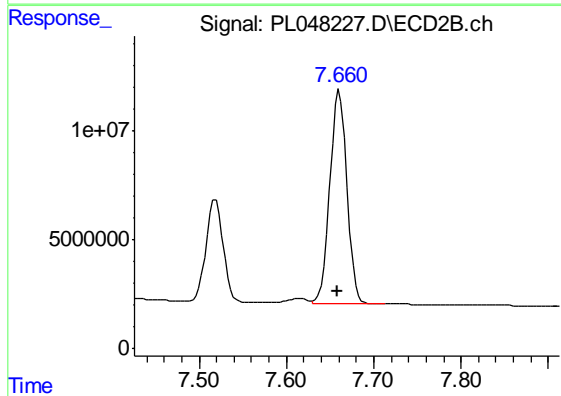
R.T.: 7.519 min  
 Delta R.T.: 0.003 min  
 Response: 63970753  
 Conc: 46.86 ng/ml



#21 Endrin ketone

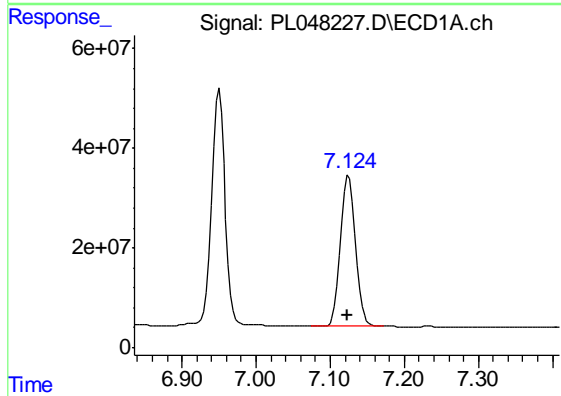
R.T.: 6.950 min  
Delta R.T.: 0.000 min  
Response: 594806876  
Conc: 51.03 ng/ml

Instrument :  
ECD\_L  
ClientSampleId :  
PSTDCCC050



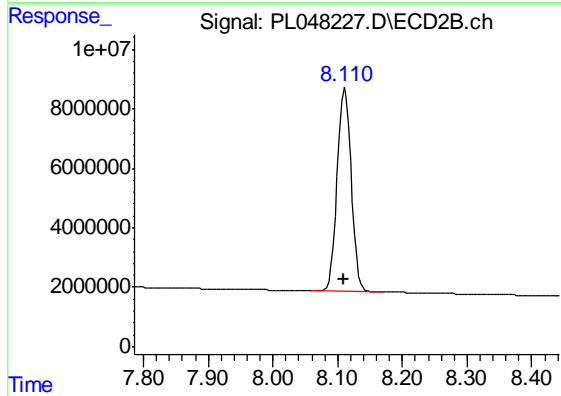
#21 Endrin ketone

R.T.: 7.661 min  
Delta R.T.: 0.003 min  
Response: 132766672  
Conc: 50.81 ng/ml



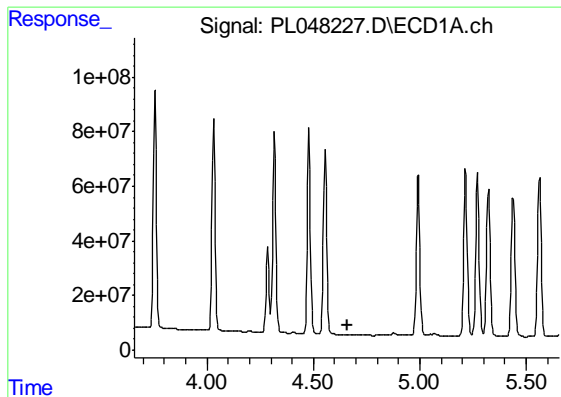
#22 Mirex

R.T.: 7.125 min  
Delta R.T.: 0.000 min  
Response: 414630700  
Conc: 46.26 ng/ml



#22 Mirex

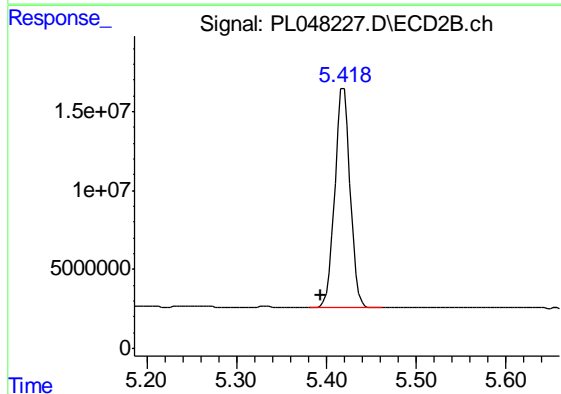
R.T.: 8.111 min  
Delta R.T.: 0.003 min  
Response: 102187063  
Conc: 48.46 ng/ml



#24 Chlordane-2

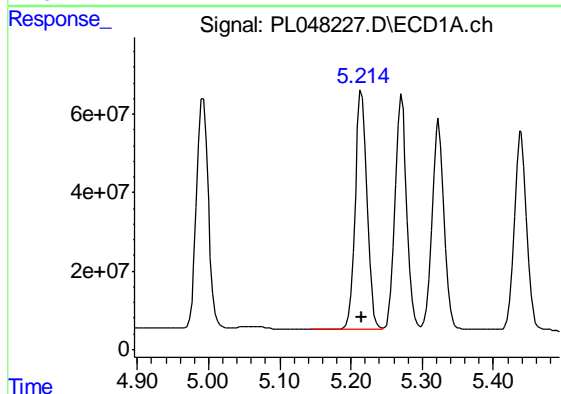
R.T.: 0.000 min  
 Exp R.T. : 4.658 min  
 Response: 0  
 Conc: N.D.

Instrument :  
 ECD\_L  
 ClientSampleId :  
 PSTDCCC050



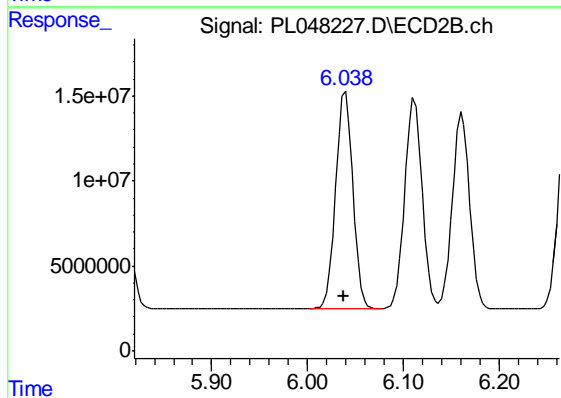
#24 Chlordane-2

R.T.: 5.419 min  
 Delta R.T.: 0.025 min  
 Response: 164886346  
 Conc: 1274.84 ng/ml



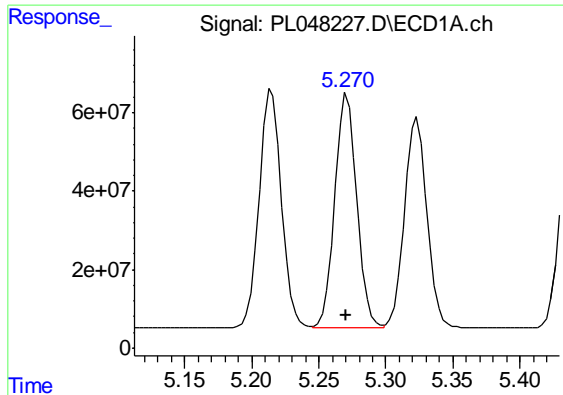
#25 Chlordane-3

R.T.: 5.215 min  
 Delta R.T.: 0.000 min  
 Response: 697039576  
 Conc: 442.69 ng/ml



#25 Chlordane-3

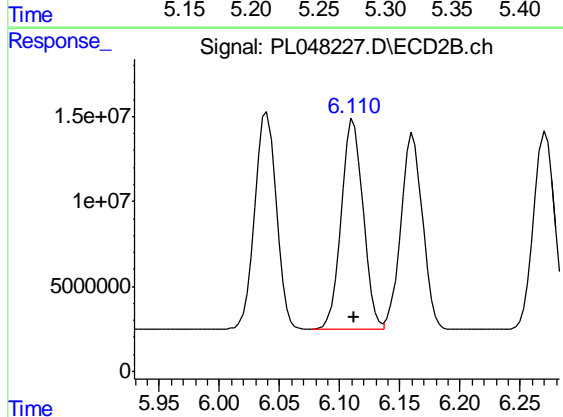
R.T.: 6.040 min  
 Delta R.T.: 0.002 min  
 Response: 158957817  
 Conc: 362.73 ng/ml



#26 Chlordane-4

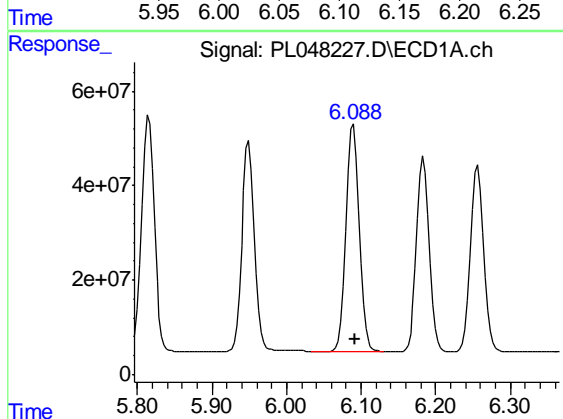
R.T.: 5.271 min  
 Delta R.T.: 0.000 min  
 Response: 676905398  
 Conc: 466.25 ng/ml

Instrument :  
 ECD\_L  
 ClientSampleId :  
 PSTDCCC050



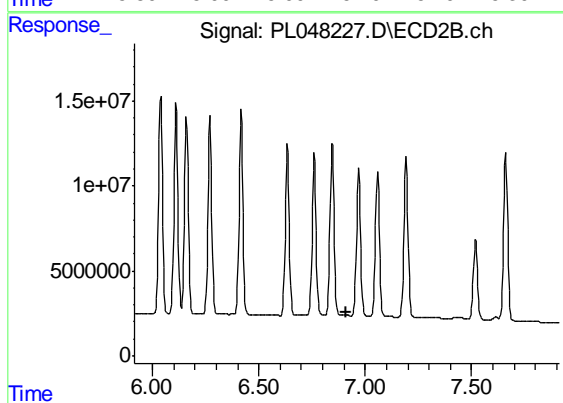
#26 Chlordane-4

R.T.: 6.112 min  
 Delta R.T.: 0.000 min  
 Response: 156981354  
 Conc: 299.24 ng/ml



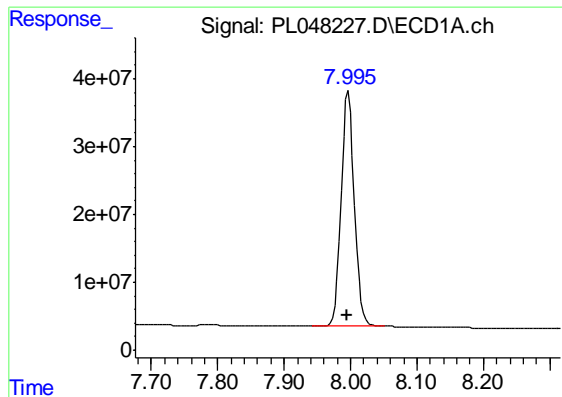
#27 Chlordane-5

R.T.: 6.089 min  
 Delta R.T.: -0.002 min  
 Response: 579538719  
 Conc: 1234.23 ng/ml



#27 Chlordane-5

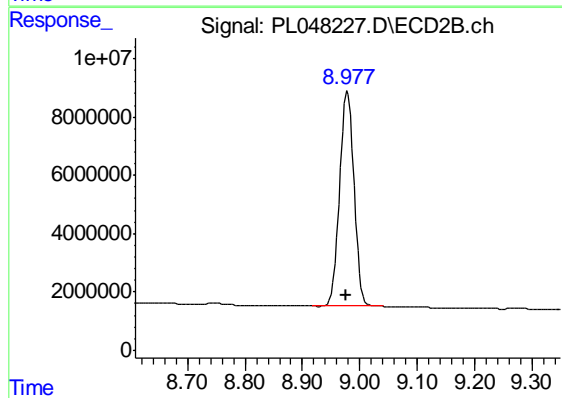
R.T.: 0.000 min  
 Exp R.T. : 6.913 min  
 Response: 0  
 Conc: N.D.



#28 Decachlorobiphenyl

R.T.: 7.997 min  
Delta R.T.: 0.000 min  
Response: 480564354  
Conc: 47.80 ng/ml

Instrument :  
ECD\_L  
ClientSampleId :  
PSTDCCC050



#28 Decachlorobiphenyl

R.T.: 8.978 min  
Delta R.T.: 0.003 min  
Response: 129156689  
Conc: 48.66 ng/ml