

Data Path : Z:\pestpcbsrv\HPCHEM1\ECD\_L\Data\PL050620\  
 Data File : PL058554.D  
 Signal(s) : Signal #1: ECD1A.ch Signal #2: ECD2B.ch  
 Acq On : 06 May 2020 15:57  
 Operator : AJ\MA  
 Sample : L2515-02  
 Misc :  
 ALS Vial : 14 Sample Multiplier: 1

**Instrument :**  
 ECD\_L  
**ClientSampleId :**  
 TP-18A

**Manual Integrations**  
**APPROVED**  
 mohammad  
 5/8/2020 12:58:26 PM

Integration File signal 1: autoint1.e  
 Integration File signal 2: autoint2.e  
 Quant Time: May 07 01:10:22 2020  
 Quant Method : Z:\pestpcbsrv\HPCHEM1\ECD\_L\methods\PL042820.M  
 Quant Title : GC Extractables  
 QLast Update : Wed Apr 29 00:55:33 2020  
 Response via : Initial Calibration  
 Integrator: ChemStation

Volume Inj. : 1 µl  
 Signal #1 Phase : ZB-MR2 Signal #2 Phase: ZB-MR1  
 Signal #1 Info : 30M x 0.32mm x0.2 Signal #2 Info : 30M x 0.32mm x0.5µm

Compound	RT#1	RT#2	Resp#1	Resp#2	ng/ml	ng/ml
-----						
System Monitoring Compounds						
1) SA Tetrachlo...	3.454	3.954	145.3E6	29205954	13.649m	13.512
28) SA Decachlor...	8.200	8.975	126.8E6	30961163	11.723	13.954
Target Compounds						
16) A 4,4'-DDD	6.126	6.763	20429393	1909077	1.742	0.840m#
-----						

(f)=RT Delta > 1/2 Window (#)=Amounts differ by > 25% (m)=manual int.

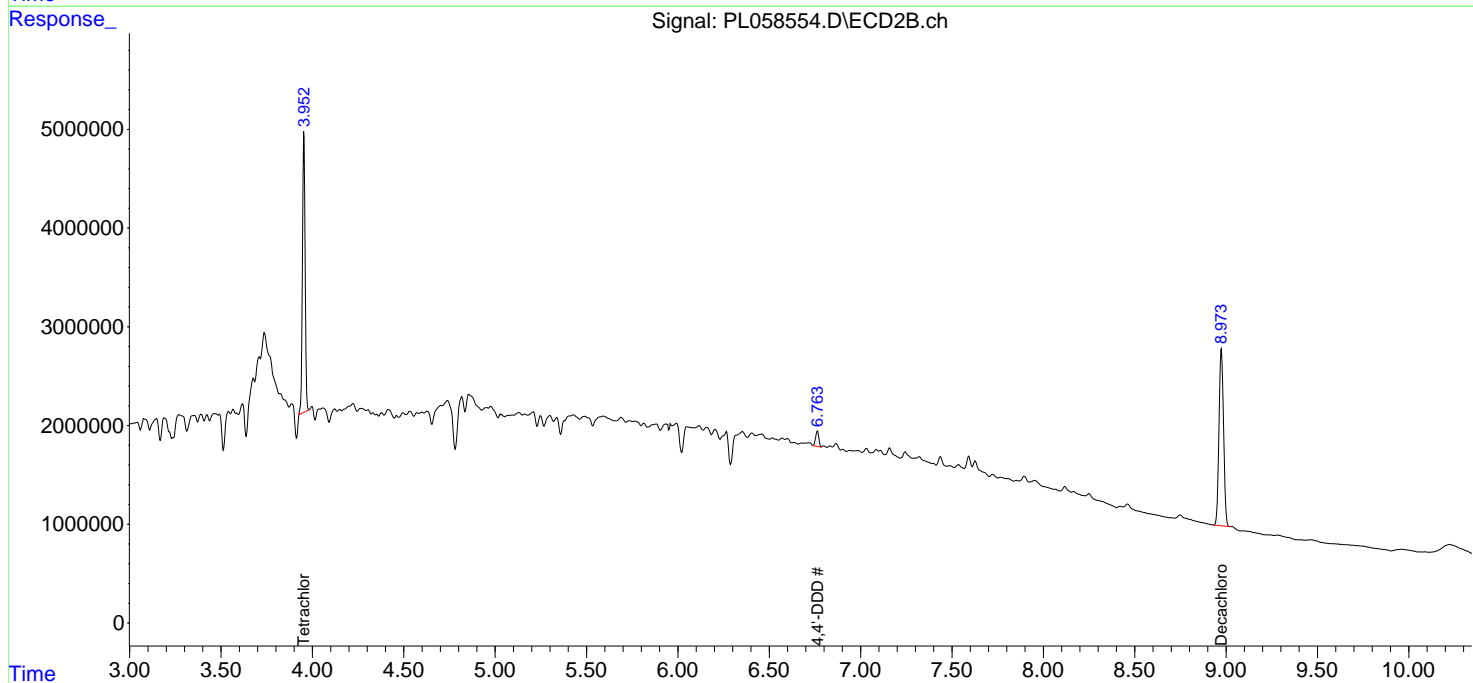
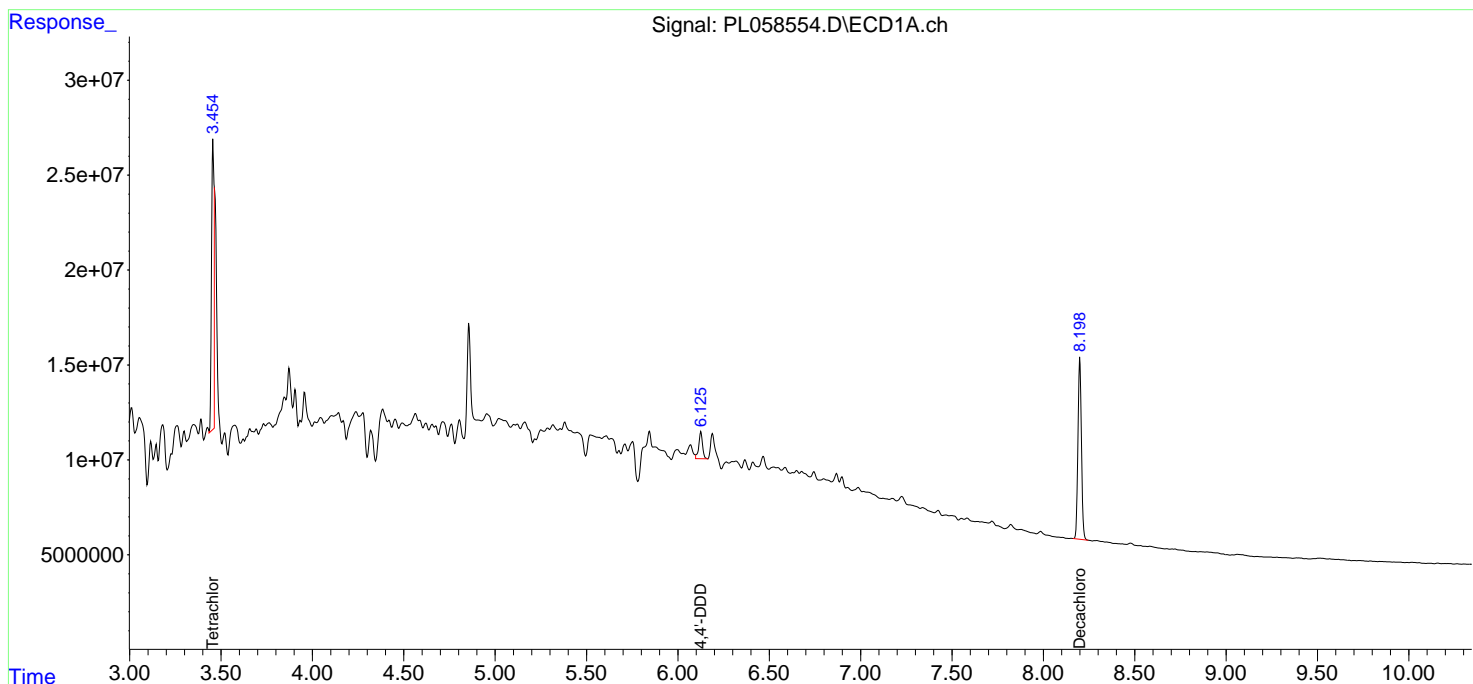
Data Path : Z:\pestpcbsrv\HPCHEM1\ECD\_L\Data\PL050620\  
 Data File : PL058554.D  
 Signal(s) : Signal #1: ECD1A.ch Signal #2: ECD2B.ch  
 Acq On : 06 May 2020 15:57  
 Operator : AJ\MA  
 Sample : L2515-02  
 Misc :  
 ALS Vial : 14 Sample Multiplier: 1

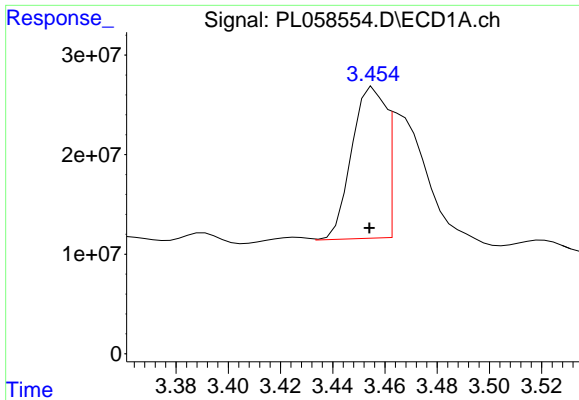
**Instrument :**  
 ECD\_L  
**ClientSampled :**  
 TP-18A

**Manual Integrations**  
**APPROVED**  
 mohammad  
 5/8/2020 12:58:26 PM

Integration File signal 1: autoint1.e  
 Integration File signal 2: autoint2.e  
 Quant Time: May 07 01:10:22 2020  
 Quant Method : Z:\pestpcbsrv\HPCHEM1\ECD\_L\methods\PL042820.M  
 Quant Title : GC Extractables  
 QLast Update : Wed Apr 29 00:55:33 2020  
 Response via : Initial Calibration  
 Integrator: ChemStation

Volume Inj. : 1 µl  
 Signal #1 Phase : ZB-MR2 Signal #2 Phase: ZB-MR1  
 Signal #1 Info : 30M x 0.32mm x0.2 Signal #2 Info : 30M x 0.32mm x0.5µm





#1 Tetrachloro-m-xylene

R.T.: 3.454 min

Delta R.T.: 0.000 min

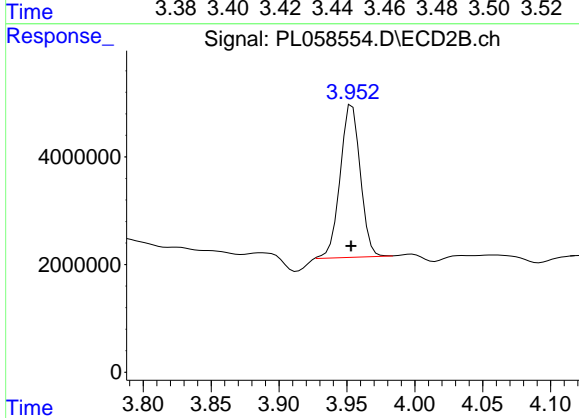
Response: 145252860

Conc: 13.65 ng/ml m

Instrument :  
ECD\_L  
ClientSampled :  
TP-18A

Manual Integrations  
APPROVED

mohammad  
5/8/2020 12:58:26 PM



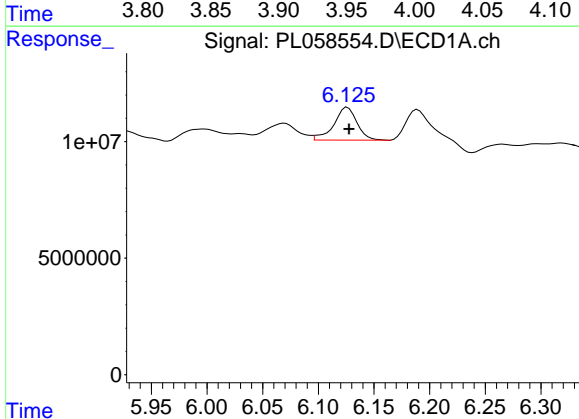
#1 Tetrachloro-m-xylene

R.T.: 3.954 min

Delta R.T.: 0.000 min

Response: 29205954

Conc: 13.51 ng/ml



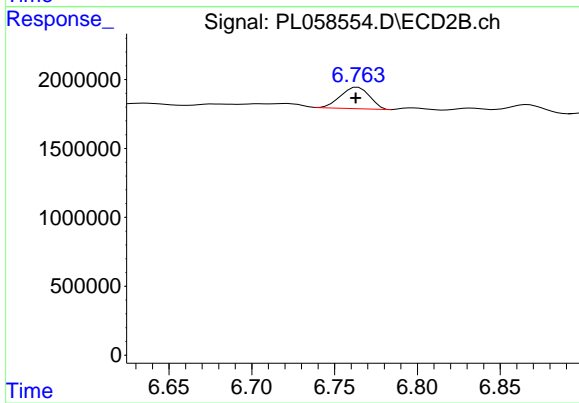
#16 4,4'-DDD

R.T.: 6.126 min

Delta R.T.: -0.001 min

Response: 20429393

Conc: 1.74 ng/ml



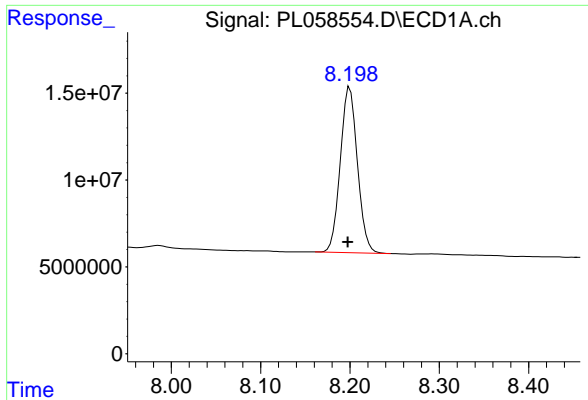
#16 4,4'-DDD

R.T.: 6.763 min

Delta R.T.: 0.000 min

Response: 1909077

Conc: 0.84 ng/ml m



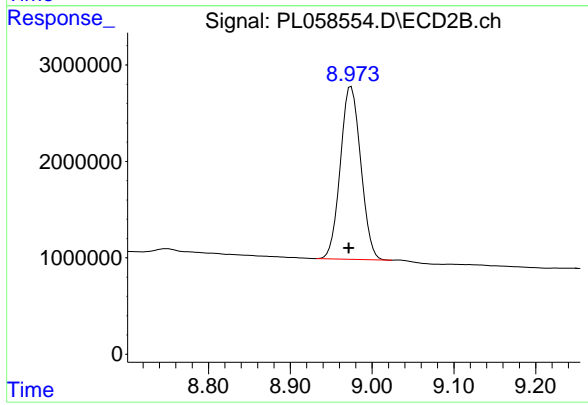
#28 Decachlorobiphenyl

R.T.: 8.200 min  
Delta R.T.: 0.003 min  
Response: 126783637  
Conc: 11.72 ng/ml

Instrument :  
ECD\_L  
ClientSampled :  
TP-18A

Manual Integrations  
APPROVED

mohammad  
5/8/2020 12:58:26 PM



#28 Decachlorobiphenyl

R.T.: 8.975 min  
Delta R.T.: 0.003 min  
Response: 30961163  
Conc: 13.95 ng/ml