

Data Path : Z:\pestpcbsrv\HPCHEM1\ECD_L\Data\PL050725\
 Data File : PL095565.D
 Signal(s) : Signal #1: ECD1A.ch Signal #2: ECD2B.ch
 Acq On : 06 May 2025 14:42
 Operator : AR\AJ
 Sample : Q1961-01
 Misc :
 ALS Vial : 7 Sample Multiplier: 1

Instrument :
 ECD_L
 ClientSampleId :
 EO-01-050525

Integration File signal 1: autoint1.e
 Integration File signal 2: autoint2.e
 Quant Time: May 07 01:41:34 2025
 Quant Method : Z:\pestpcbsrv\HPCHEM1\ECD_L\methods\PL042325.M
 Quant Title : GC Extractables
 QLast Update : Wed Apr 23 16:23:18 2025
 Response via : Initial Calibration
 Integrator: ChemStation

Volume Inj. : 1 µl
 Signal #1 Phase : ZB-MR1 Signal #2 Phase: ZB-MR2
 Signal #1 Info : 30M x 0.32mm x0.5 Signal #2 Info : 30M x 0.32mm x0.25µm

| Compound | RT#1 | RT#2 | Resp#1 | Resp#2 | ng/ml | ng/ml |
|-----------------------------|--------|--------|----------|----------|--------|----------|
| ----- | | | | | | |
| System Monitoring Compounds | | | | | | |
| 1) SA Tetrachlo... | 3.595 | 2.909 | 43014293 | 55635696 | 13.176 | 17.497 # |
| 28) SA Decachlor... | 9.119 | 8.090 | 40332799 | 41441582 | 14.556 | 14.004 |
| Target Compounds | | | | | | |
| 6) B beta-BHC | 4.585f | 4.018f | -4481200 | 7448669 | N.D. | 3.588 |
| 10) B gamma-Chl... | 5.991 | 0.000 | 14155538 | 0 | 3.470 | N.D. # |
| 11) B alpha-Chl... | 6.076 | 0.000 | 9112596 | 0 | 2.241 | N.D. # |
| 23) Chlordane-1 | 0.000 | 3.928 | 0 | 8226755 | N.D. | 53.200 # |
| 25) Chlordane-3 | 5.991 | 0.000 | 14155538 | 0 | 18.173 | N.D. # |
| 26) Chlordane-4 | 6.076 | 0.000 | 9112596 | 0 | 9.664 | N.D. # |
| ----- | | | | | | |

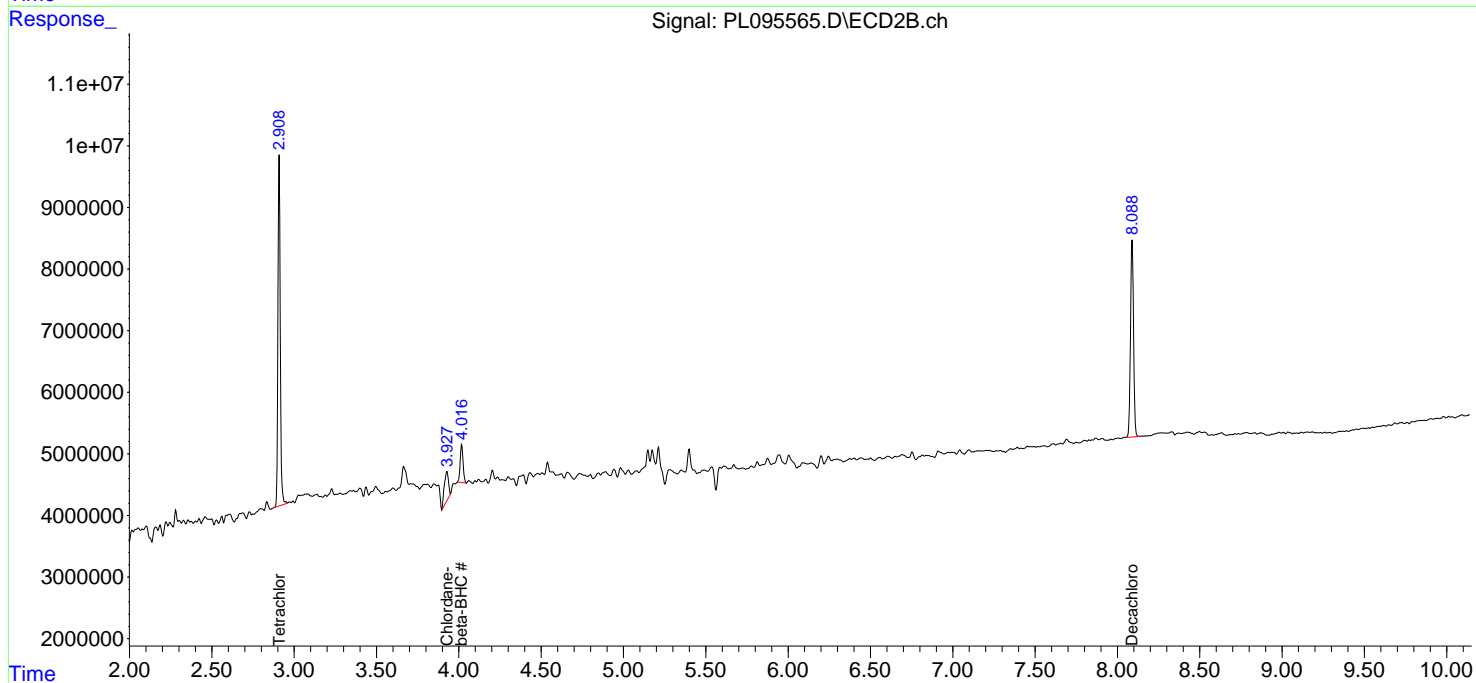
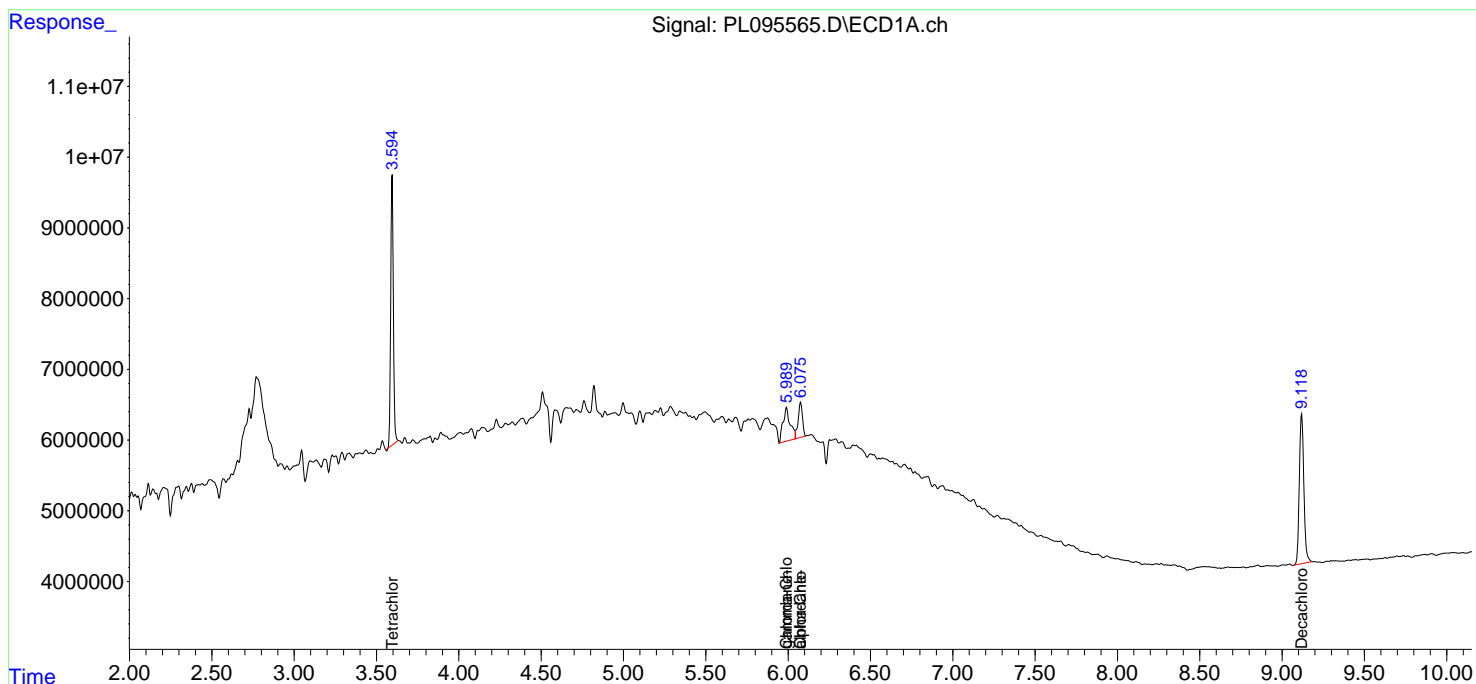
(f)=RT Delta > 1/2 Window (#)=Amounts differ by > 25% (m)=manual int.

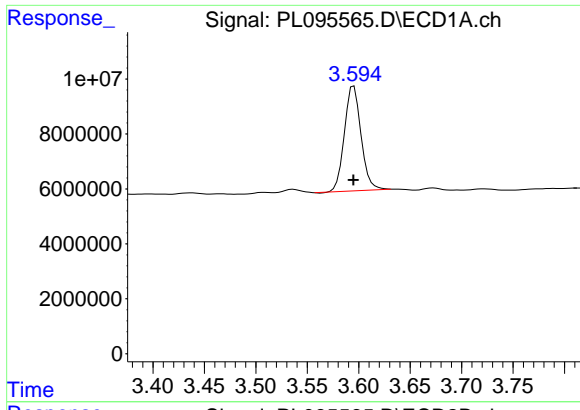
Data Path : Z:\pestpcbsrv\HPCHEM1\ECD_L\Data\PL050725\
 Data File : PL095565.D
 Signal(s) : Signal #1: ECD1A.ch Signal #2: ECD2B.ch
 Acq On : 06 May 2025 14:42
 Operator : AR\AJ
 Sample : Q1961-01
 Misc :
 ALS Vial : 7 Sample Multiplier: 1

Instrument :
 ECD_L
 ClientSampleId :
 EO-01-050525

Integration File signal 1: autoint1.e
 Integration File signal 2: autoint2.e
 Quant Time: May 07 01:41:34 2025
 Quant Method : Z:\pestpcbsrv\HPCHEM1\ECD_L\methods\PL042325.M
 Quant Title : GC Extractables
 QLast Update : Wed Apr 23 16:23:18 2025
 Response via : Initial Calibration
 Integrator: ChemStation

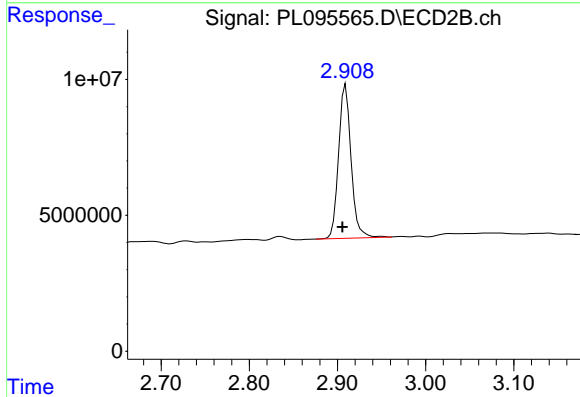
Volume Inj. : 1 µl
 Signal #1 Phase : ZB-MR1 Signal #2 Phase: ZB-MR2
 Signal #1 Info : 30M x 0.32mm x0.5 Signal #2 Info : 30M x 0.32mm x0.25µm



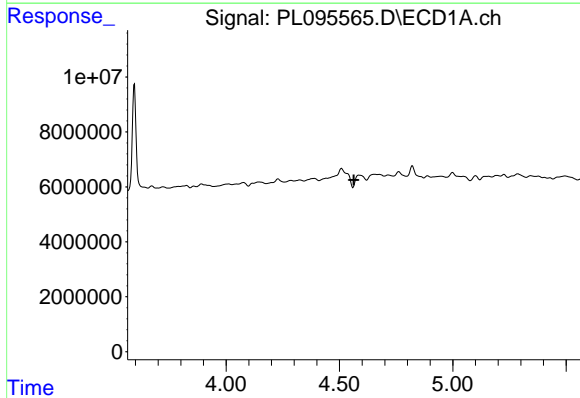


#1 Tetrachloro-m-xylene
 R.T.: 3.595 min
 Delta R.T.: 0.000 min
 Response: 43014293
 Conc: 13.18 ng/ml

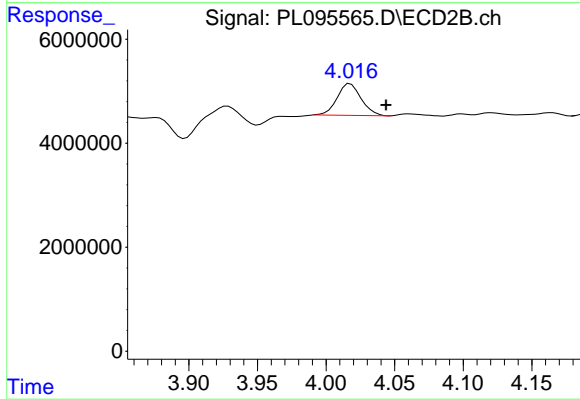
Instrument :
 ECD_L
 ClientSampleId :
 EO-01-050525



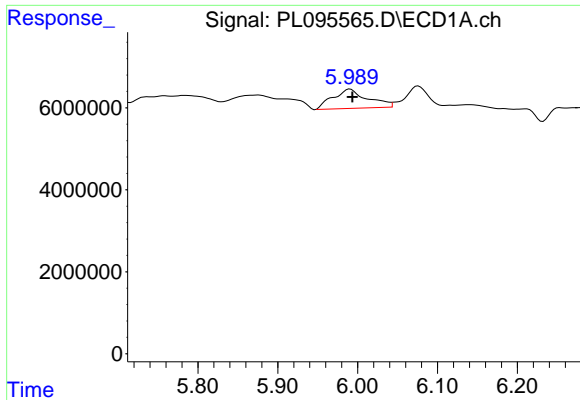
#1 Tetrachloro-m-xylene
 R.T.: 2.909 min
 Delta R.T.: 0.004 min
 Response: 55635696
 Conc: 17.50 ng/ml



#6 beta-BHC
 R.T.: 4.585 min
 Delta R.T.: 0.022 min
 Response: -4481200
 Conc: N.D.



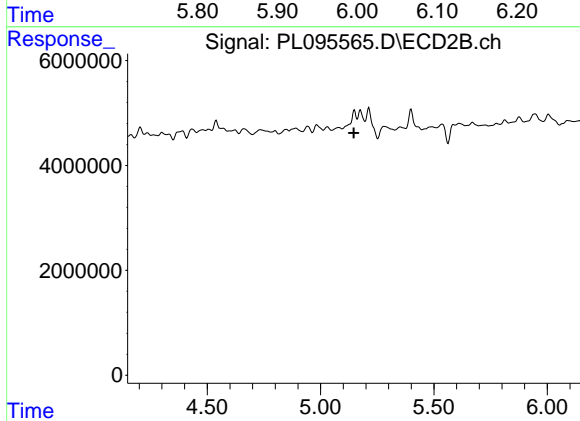
#6 beta-BHC
 R.T.: 4.018 min
 Delta R.T.: -0.026 min
 Response: 7448669
 Conc: 3.59 ng/ml



#10 gamma-Chlordane

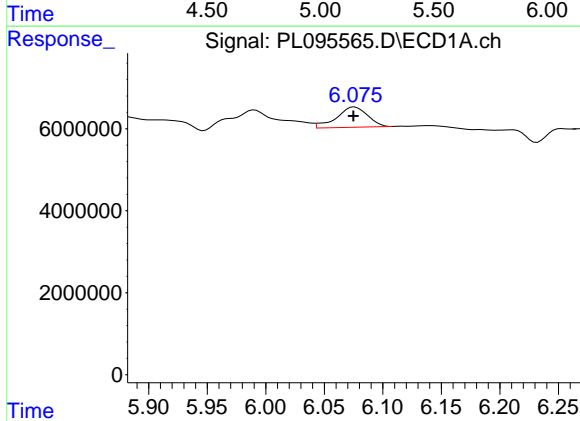
R.T.: 5.991 min
 Delta R.T.: -0.003 min
 Response: 14155538
 Conc: 3.47 ng/ml

Instrument :
 ECD_L
 ClientSampleId :
 EO-01-050525



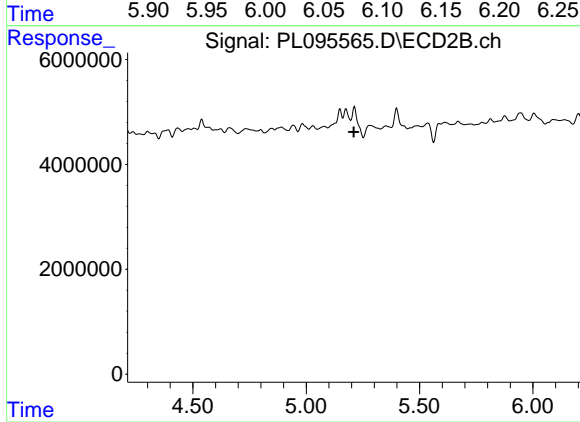
#10 gamma-Chlordane

R.T.: 0.000 min
 Exp R.T. : 5.147 min
 Response: 0
 Conc: N.D.



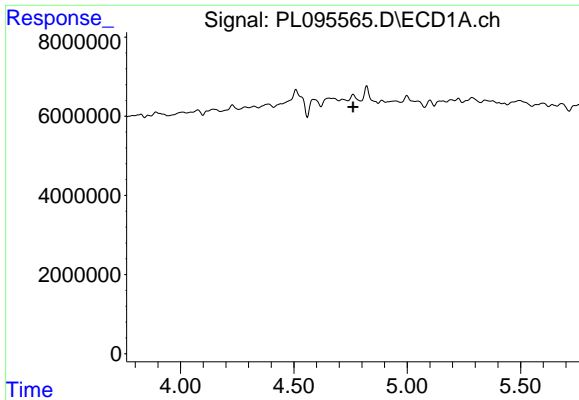
#11 alpha-Chlordane

R.T.: 6.076 min
 Delta R.T.: 0.001 min
 Response: 9112596
 Conc: 2.24 ng/ml



#11 alpha-Chlordane

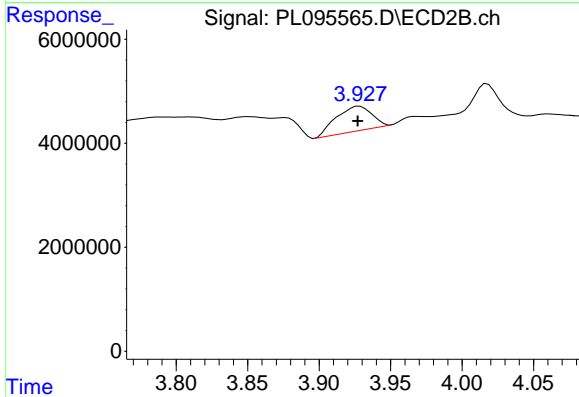
R.T.: 0.000 min
 Exp R.T. : 5.211 min
 Response: 0
 Conc: N.D.



#23 Chlordane-1

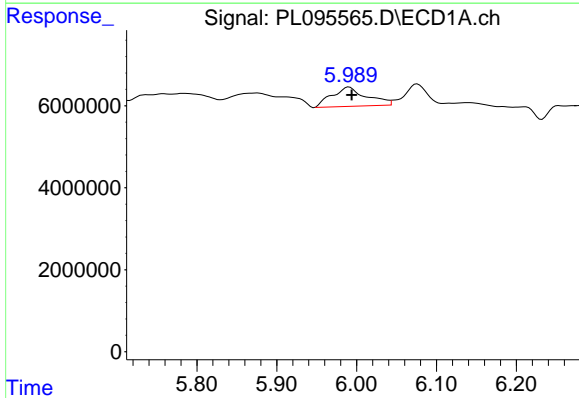
R.T.: 0.000 min
 Exp R.T.: 4.762 min
 Response: 0
 Conc: N.D.

Instrument :
 ECD_L
 ClientSampleId :
 EO-01-050525



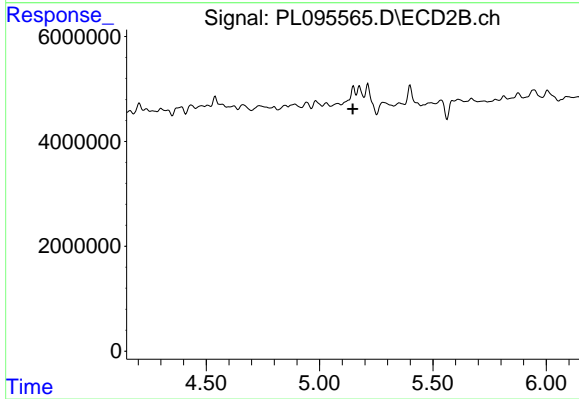
#23 Chlordane-1

R.T.: 3.928 min
 Delta R.T.: 0.001 min
 Response: 8226755
 Conc: 53.20 ng/ml



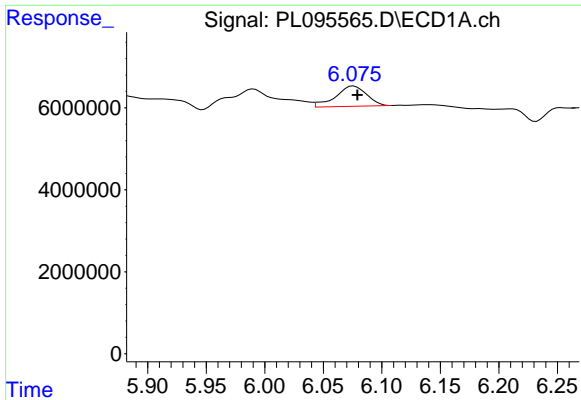
#25 Chlordane-3

R.T.: 5.991 min
 Delta R.T.: -0.003 min
 Response: 14155538
 Conc: 18.17 ng/ml



#25 Chlordane-3

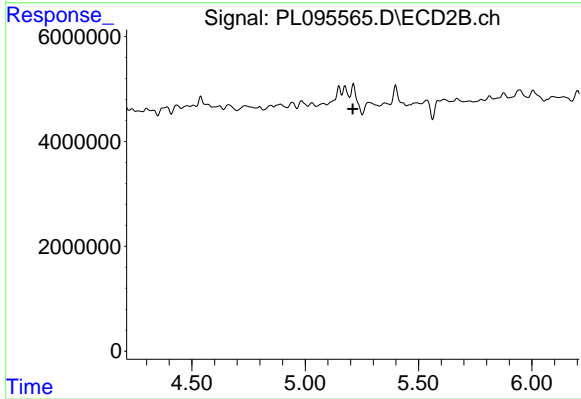
R.T.: 0.000 min
 Exp R.T.: 5.147 min
 Response: 0
 Conc: N.D.



#26 Chlordane-4

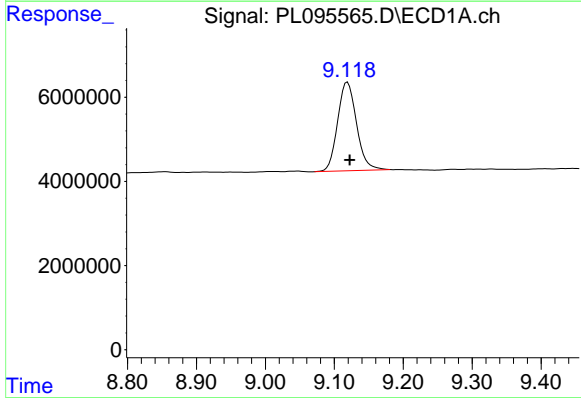
R.T.: 6.076 min
 Delta R.T.: -0.003 min
 Response: 9112596
 Conc: 9.66 ng/ml

Instrument : ECD_L
 ClientSampleId : EO-01-050525



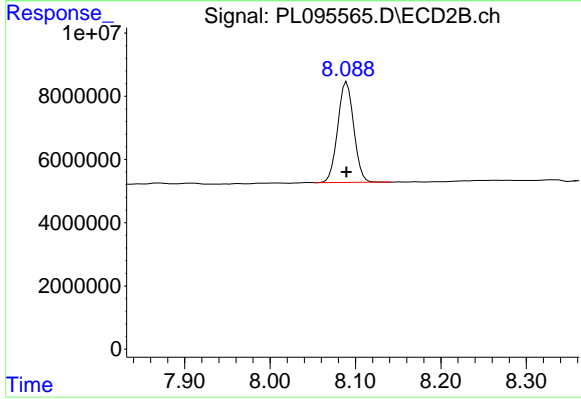
#26 Chlordane-4

R.T.: 0.000 min
 Exp R.T. : 5.211 min
 Response: 0
 Conc: N.D.



#28 Decachlorobiphenyl

R.T.: 9.119 min
 Delta R.T.: -0.003 min
 Response: 40332799
 Conc: 14.56 ng/ml



#28 Decachlorobiphenyl

R.T.: 8.090 min
 Delta R.T.: 0.000 min
 Response: 41441582
 Conc: 14.00 ng/ml