

Data Path : Z:\pestpcbsrv\HPCHEM1\ECD_L\Data\PL050725\
 Data File : PL095567.D
 Signal(s) : Signal #1: ECD1A.ch Signal #2: ECD2B.ch
 Acq On : 06 May 2025 16:37
 Operator : AR\AJ
 Sample : PSTDCCC050
 Misc :
 ALS Vial : 4 Sample Multiplier: 1

Instrument :
 ECD_L
 ClientSampleId :
 PSTDCCC050

Integration File signal 1: autoint1.e
 Integration File signal 2: autoint2.e
 Quant Time: May 07 01:41:55 2025
 Quant Method : Z:\pestpcbsrv\HPCHEM1\ECD_L\methods\PL042325.M
 Quant Title : GC Extractables
 QLast Update : Wed Apr 23 16:23:18 2025
 Response via : Initial Calibration
 Integrator: ChemStation

Volume Inj. : 1 µl
 Signal #1 Phase : ZB-MR2 Signal #2 Phase: ZB-MR2
 Signal #1 Info : 30M x 0.32mm x0.5 Signal #2 Info : 30M x 0.32mm x0.25µm

| | Compound | RT#1 | RT#2 | Resp#1 | Resp#2 | ng/ml | ng/ml |
|-----------------------------|-----------------|-------|-------|----------|----------|---------|------------|
| ----- | | | | | | | |
| System Monitoring Compounds | | | | | | | |
| 1) | SA Tetrachlo... | 3.598 | 2.909 | 136.7E6 | 166.2E6 | 41.874 | 52.266 |
| 28) | SA Decachlor... | 9.124 | 8.091 | 117.4E6 | 138.5E6 | 42.353 | 46.812 |
| Target Compounds | | | | | | | |
| 2) | A alpha-BHC | 4.049 | 3.419 | 209.0E6 | 252.2E6 | 42.195 | 56.681 # |
| 3) | MA gamma-BHC... | 4.381 | 3.752 | 201.3E6 | 240.2E6 | 42.530 | 54.622 # |
| 4) | MA Heptachlor | 4.979 | 4.107 | 194.6E6 | 230.9E6 | 42.539 | 53.005 |
| 5) | MB Aldrin | 5.321 | 4.392 | 206.3E6 | 228.2E6 | 44.920 | 55.456 |
| 6) | B beta-BHC | 4.566 | 4.047 | 88108572 | 108.1E6 | 42.616 | 52.080 |
| 7) | B delta-BHC | 0.000 | 4.283 | 0 | 244.8E6 | N.D. | 55.866 # |
| 8) | B Heptachlo... | 5.741 | 4.896 | 186.3E6 | 208.8E6 | 46.518 | 54.059 |
| 9) | A Endosulfan I | 6.124 | 5.269 | 174.5E6 | 201.4E6 | 45.941 | 55.009 |
| 10) | B gamma-Chl... | 5.996 | 5.149 | 190.7E6 | 217.3E6 | 46.750 | 53.611 |
| 11) | B alpha-Chl... | 6.076 | 5.213 | 187.4E6 | 212.5E6 | 46.090 | 53.379 |
| 12) | B 4,4'-DDE | 6.245 | 5.399 | 182.9E6 | 216.5E6 | 46.653 | 53.232 |
| 13) | MA Dieldrin | 6.398 | 5.534 | 172.5E6 | 221.7E6 | 44.759 | 54.500 |
| 14) | MA Endrin | 6.625 | 5.810 | 134.0E6 | 195.3E6 | 42.069 | 53.644 # |
| 15) | B Endosulfa... | 6.837 | 6.100 | 147.2E6 | 195.1E6 | 46.122 | 54.328 |
| 16) | A 4,4'-DDD | 6.754 | 5.952 | 132.1E6 | 184.8E6 | 46.656 | 56.563 |
| 17) | MA 4,4'-DDT | 7.070 | 6.206 | 125.6E6 | 185.5E6 | 44.100 | 53.989 |
| 18) | B Endrin al... | 6.966 | 6.278 | 103.3E6 | 139.2E6 | 44.532 | 53.250 |
| 19) | B Endosulfa... | 7.199 | 6.502 | 126.9E6 | 177.1E6 | 45.281 | 53.379 |
| 20) | A Methoxychlor | 7.540 | 6.776 | 60039251 | 98039780 | 43.035 | 51.399 |
| 21) | B Endrin ke... | 7.681 | 7.007 | 129.9E6 | 202.7E6 | 45.563 | 57.569 # |
| 22) | Mirex | 8.162 | 7.204 | 105.5E6 | 149.0E6 | 44.422 | 51.703 |
| 25) | Chlordane-3 | 5.996 | 5.149 | 190.7E6 | 217.3E6 | 244.836 | 420.554 # |
| 26) | Chlordane-4 | 6.076 | 5.213 | 187.4E6 | 212.5E6 | 198.751 | 488.955 # |
| 27) | Chlordane-5 | 0.000 | 6.100 | 0 | 195.1E6 | N.D. | 1056.078 # |

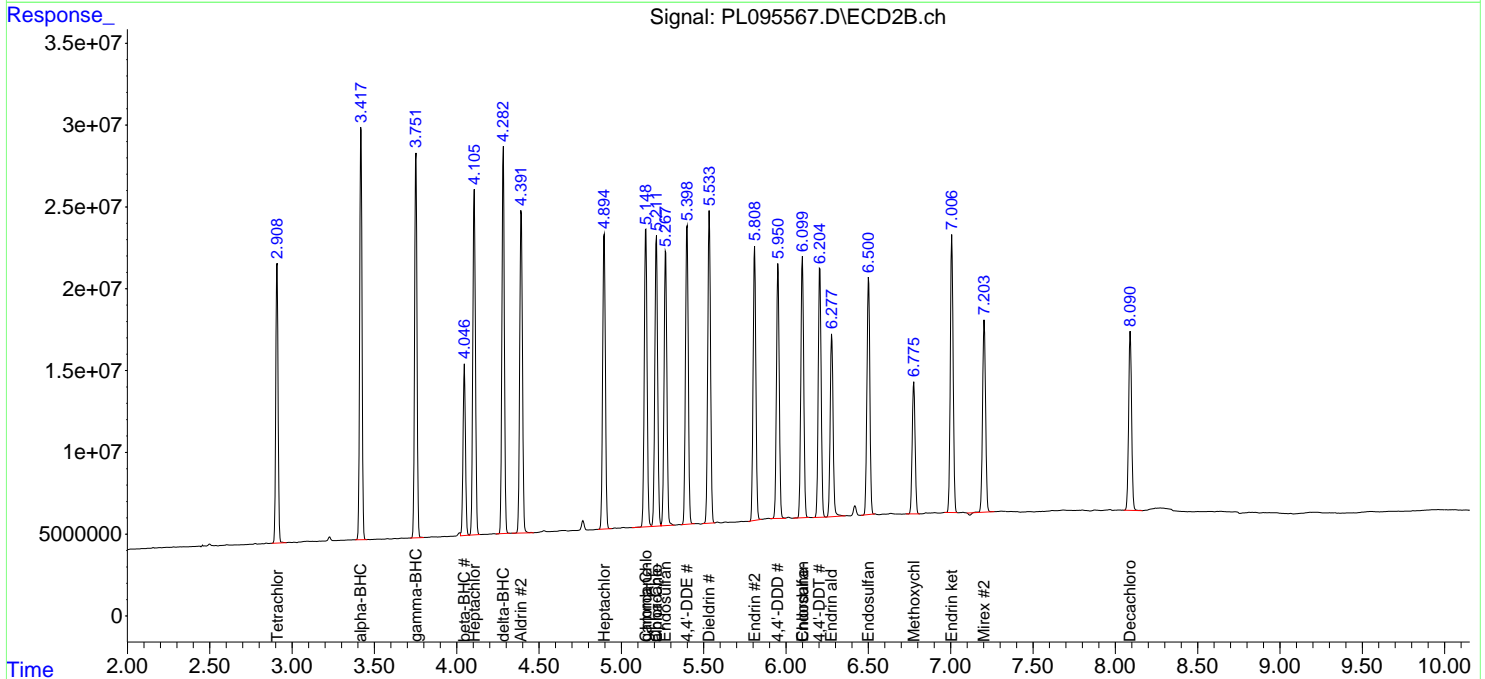
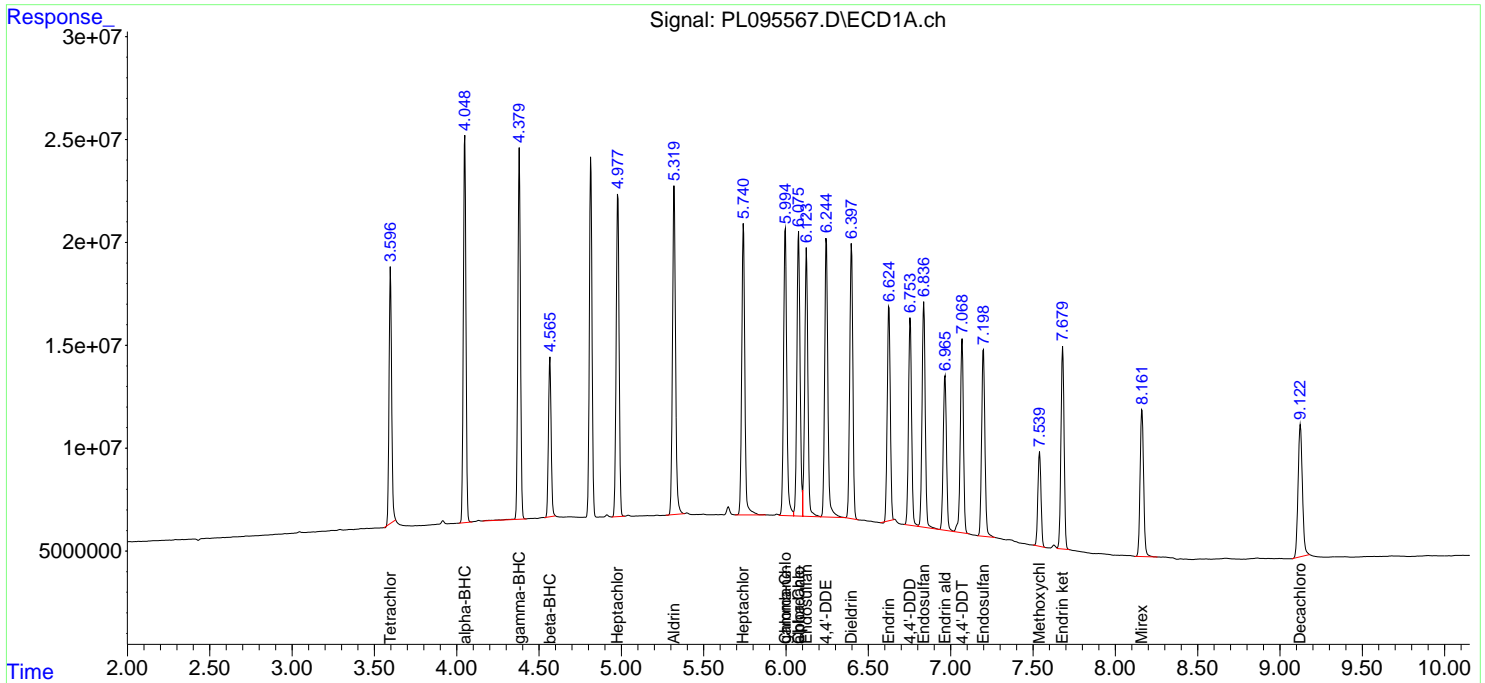
(f)=RT Delta > 1/2 Window (#)=Amounts differ by > 25% (m)=manual int.

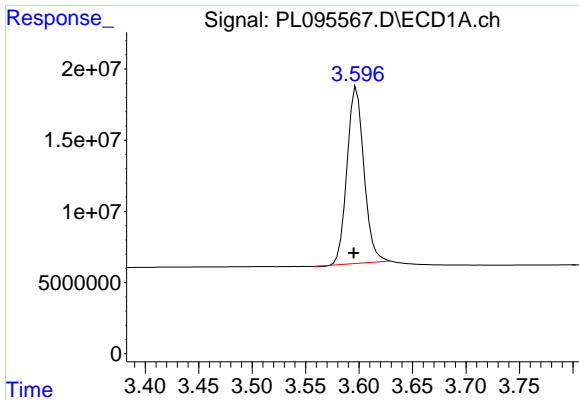
Data Path : Z:\pestpcbsrv\HPCHEM1\ECD_L\Data\PL050725\
 Data File : PL095567.D
 Signal(s) : Signal #1: ECD1A.ch Signal #2: ECD2B.ch
 Acq On : 06 May 2025 16:37
 Operator : AR\AJ
 Sample : PSTDCCC050
 Misc :
 ALS Vial : 4 Sample Multiplier: 1

Instrument :
 ECD_L
 ClientSampleId :
 PSTDCCC050

Integration File signal 1: autoint1.e
 Integration File signal 2: autoint2.e
 Quant Time: May 07 01:41:55 2025
 Quant Method : Z:\pestpcbsrv\HPCHEM1\ECD_L\methods\PL042325.M
 Quant Title : GC Extractables
 QLast Update : Wed Apr 23 16:23:18 2025
 Response via : Initial Calibration
 Integrator: ChemStation

Volume Inj. : 1 µl
 Signal #1 Phase : ZB-MR1 Signal #2 Phase: ZB-MR2
 Signal #1 Info : 30M x 0.32mm x0.5 Signal #2 Info : 30M x 0.32mm x0.25µm

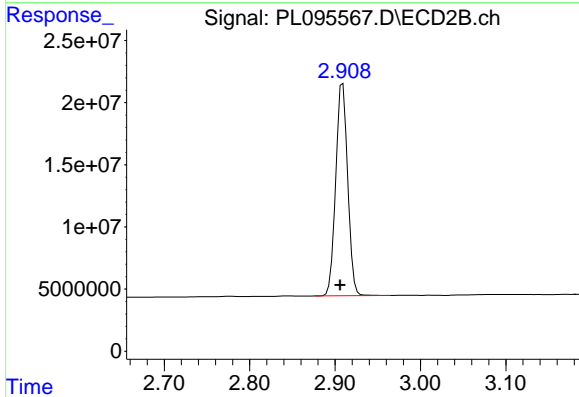




#1 Tetrachloro-m-xylene

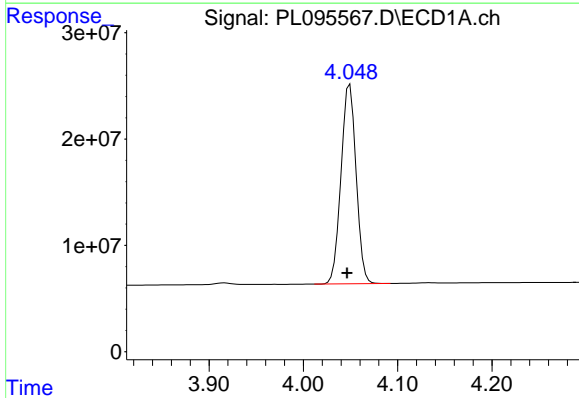
R.T.: 3.598 min
 Delta R.T.: 0.003 min
 Response: 136703749
 Conc: 41.87 ng/ml

Instrument :
 ECD_L
 ClientSampleId :
 PSTDCCC050



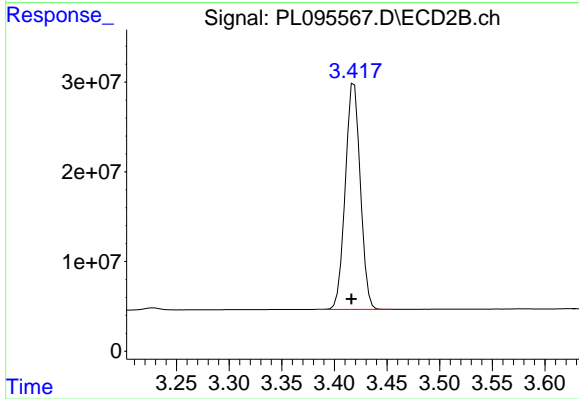
#1 Tetrachloro-m-xylene

R.T.: 2.909 min
 Delta R.T.: 0.003 min
 Response: 166193196
 Conc: 52.27 ng/ml



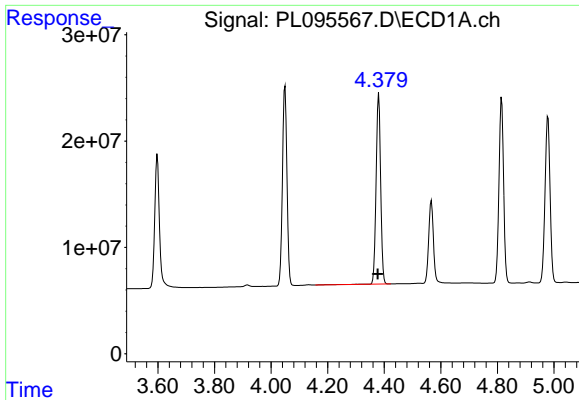
#2 alpha-BHC

R.T.: 4.049 min
 Delta R.T.: 0.003 min
 Response: 209025295
 Conc: 42.20 ng/ml



#2 alpha-BHC

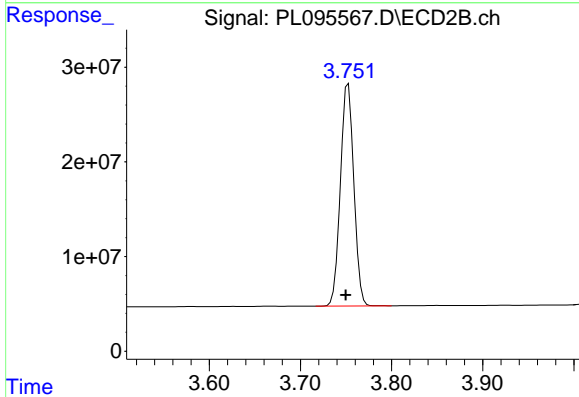
R.T.: 3.419 min
 Delta R.T.: 0.003 min
 Response: 252158921
 Conc: 56.68 ng/ml



#3 gamma-BHC (Lindane)

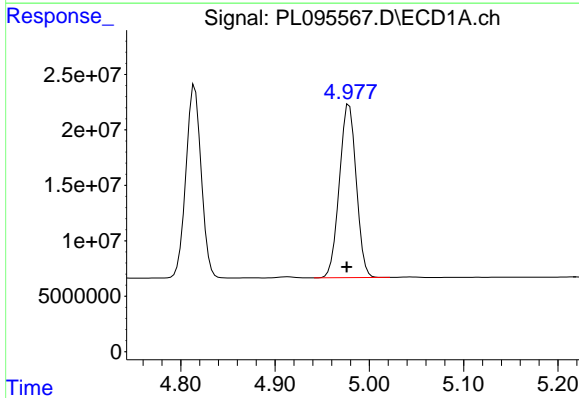
R.T.: 4.381 min
 Delta R.T.: 0.003 min
 Response: 201336270
 Conc: 42.53 ng/ml

Instrument :
 ECD_L
 ClientSampleId :
 PSTDCCC050



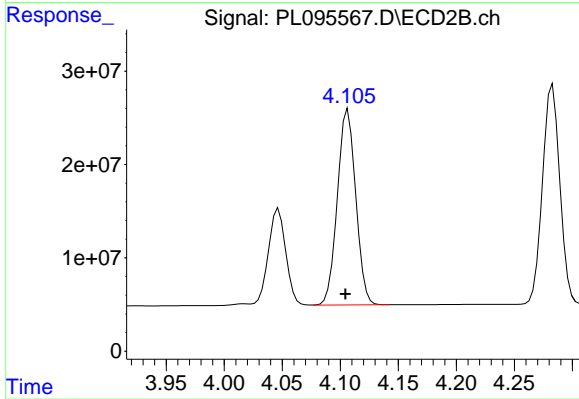
#3 gamma-BHC (Lindane)

R.T.: 3.752 min
 Delta R.T.: 0.003 min
 Response: 240239649
 Conc: 54.62 ng/ml



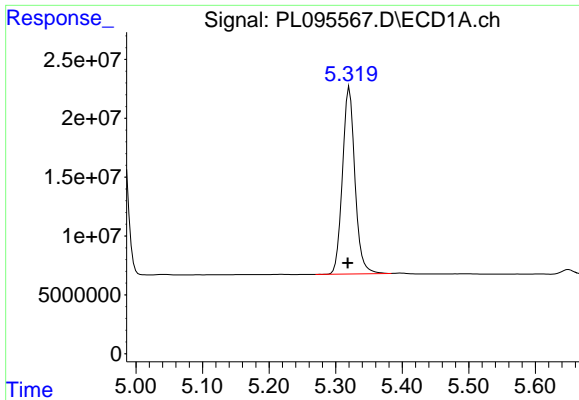
#4 Heptachlor

R.T.: 4.979 min
 Delta R.T.: 0.003 min
 Response: 194592844
 Conc: 42.54 ng/ml



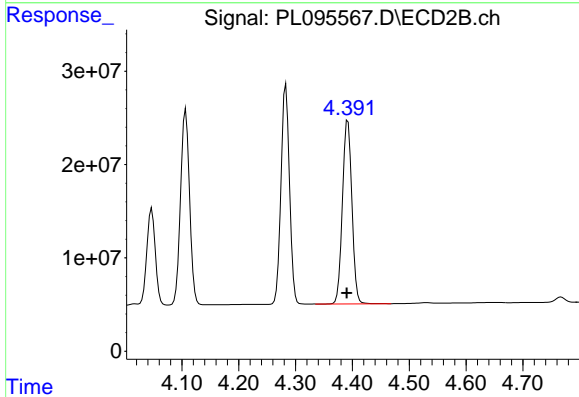
#4 Heptachlor

R.T.: 4.107 min
 Delta R.T.: 0.002 min
 Response: 230927332
 Conc: 53.01 ng/ml

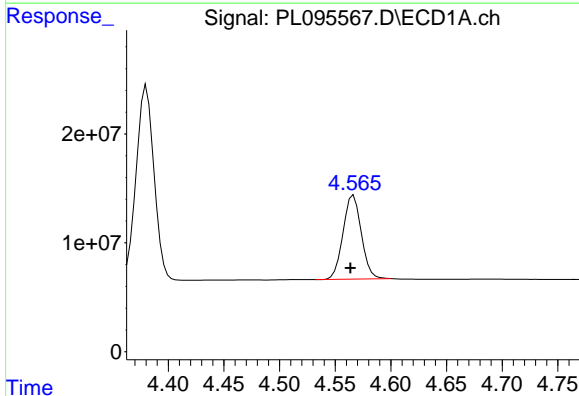


#5 Aldrin
 R.T.: 5.321 min
 Delta R.T.: 0.002 min
 Response: 206319142
 Conc: 44.92 ng/ml

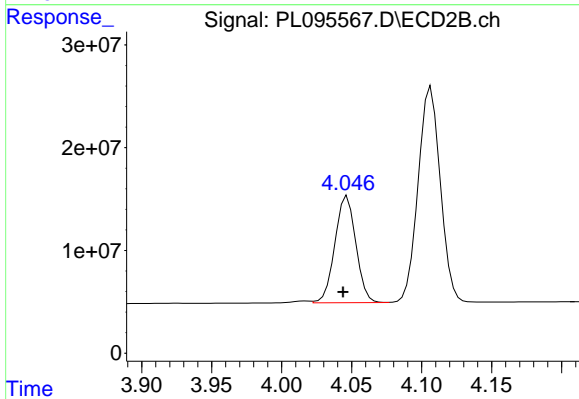
Instrument :
 ECD_L
 ClientSampleId :
 PSTDCCC050



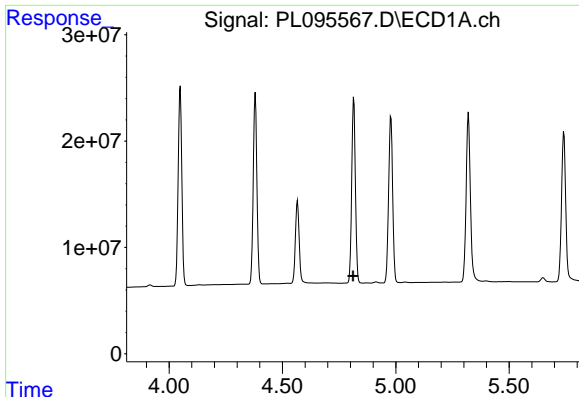
#5 Aldrin
 R.T.: 4.392 min
 Delta R.T.: 0.002 min
 Response: 228240819
 Conc: 55.46 ng/ml



#6 beta-BHC
 R.T.: 4.566 min
 Delta R.T.: 0.003 min
 Response: 88108572
 Conc: 42.62 ng/ml



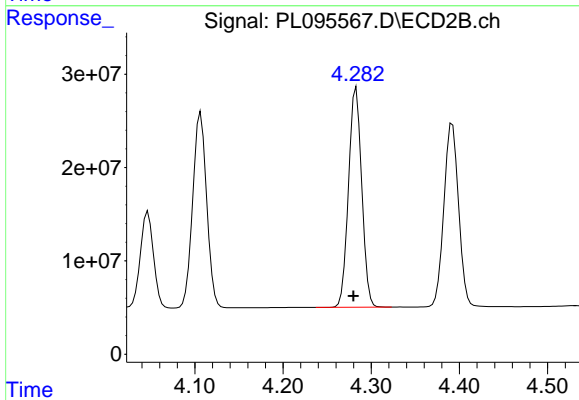
#6 beta-BHC
 R.T.: 4.047 min
 Delta R.T.: 0.003 min
 Response: 108111160
 Conc: 52.08 ng/ml



#7 delta-BHC

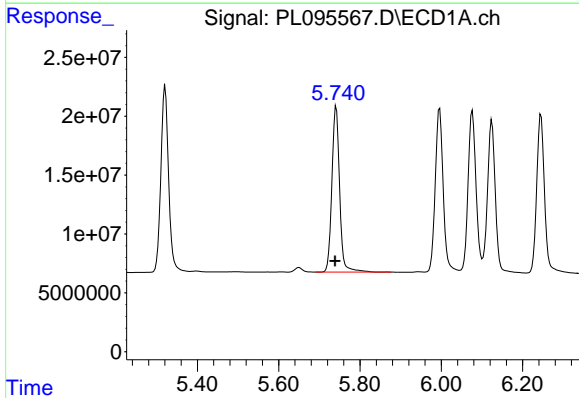
R.T.: 0.000 min
 Exp R.T.: 4.812 min
 Response: 0
 Conc: N.D.

Instrument :
 ECD_L
 ClientSampleId :
 PSTDCCC050



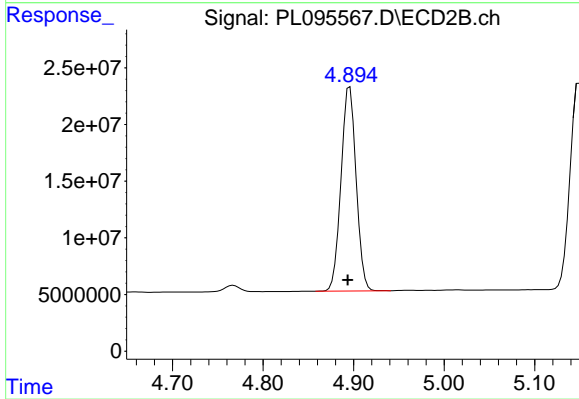
#7 delta-BHC

R.T.: 4.283 min
 Delta R.T.: 0.003 min
 Response: 244801558
 Conc: 55.87 ng/ml



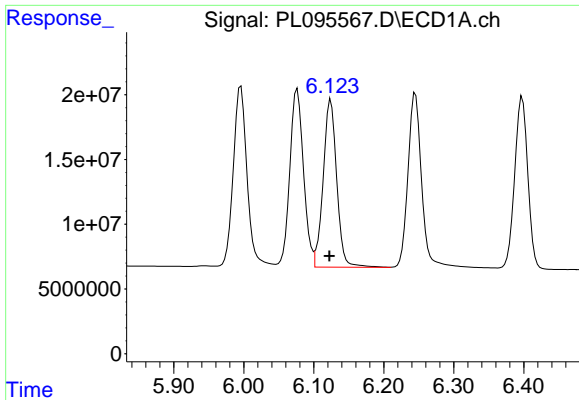
#8 Heptachlor epoxide

R.T.: 5.741 min
 Delta R.T.: 0.003 min
 Response: 186311912
 Conc: 46.52 ng/ml



#8 Heptachlor epoxide

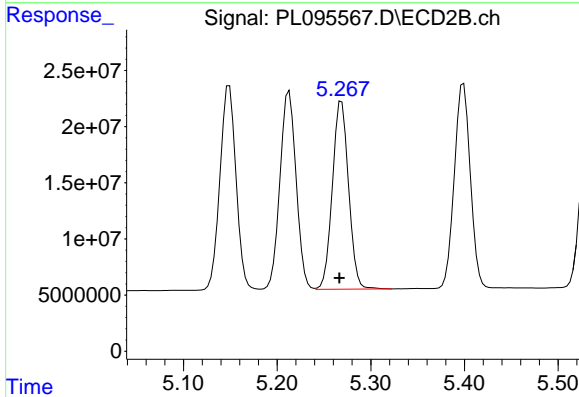
R.T.: 4.896 min
 Delta R.T.: 0.002 min
 Response: 208810226
 Conc: 54.06 ng/ml



#9 Endosulfan I

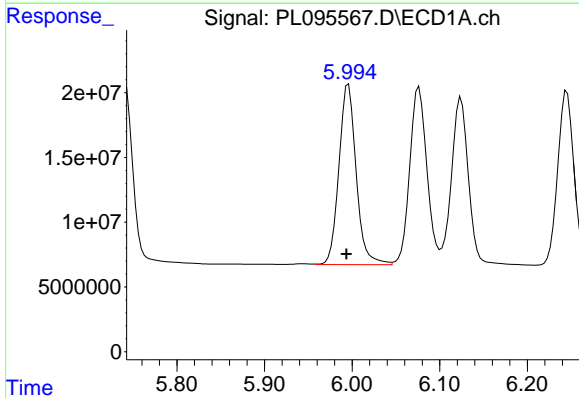
R.T.: 6.124 min
 Delta R.T.: 0.002 min
 Response: 174461792
 Conc: 45.94 ng/ml

Instrument :
 ECD_L
 ClientSampleId :
 PSTDCCC050



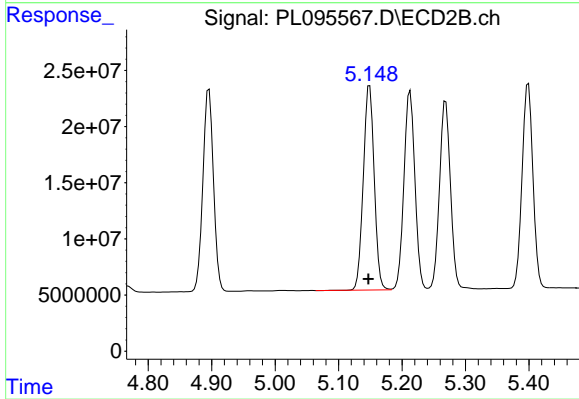
#9 Endosulfan I

R.T.: 5.269 min
 Delta R.T.: 0.002 min
 Response: 201354620
 Conc: 55.01 ng/ml



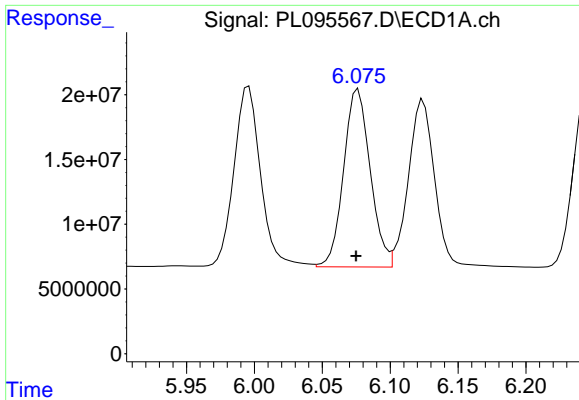
#10 gamma-Chlordane

R.T.: 5.996 min
 Delta R.T.: 0.002 min
 Response: 190709344
 Conc: 46.75 ng/ml



#10 gamma-Chlordane

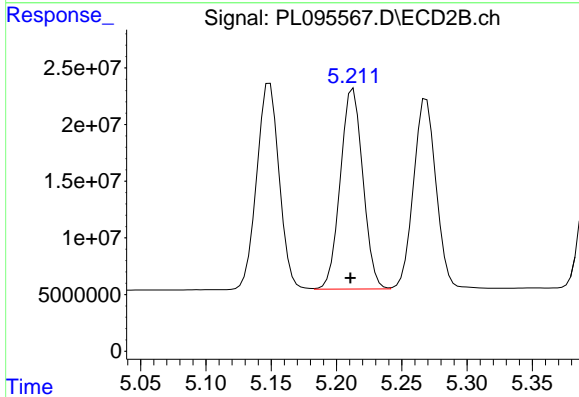
R.T.: 5.149 min
 Delta R.T.: 0.002 min
 Response: 217267363
 Conc: 53.61 ng/ml



#11 alpha-Chlordane

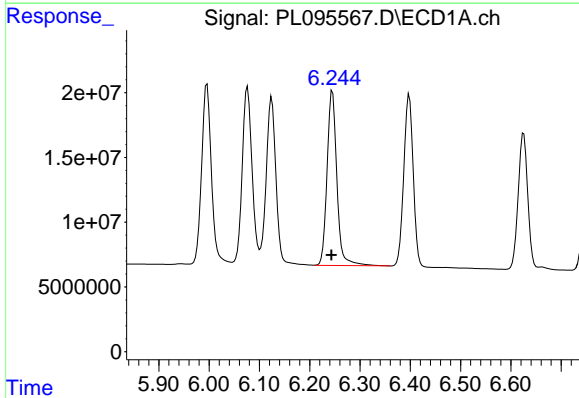
R.T.: 6.076 min
 Delta R.T.: 0.002 min
 Response: 187407839
 Conc: 46.09 ng/ml

Instrument :
 ECD_L
 ClientSampleId :
 PSTDCCC050



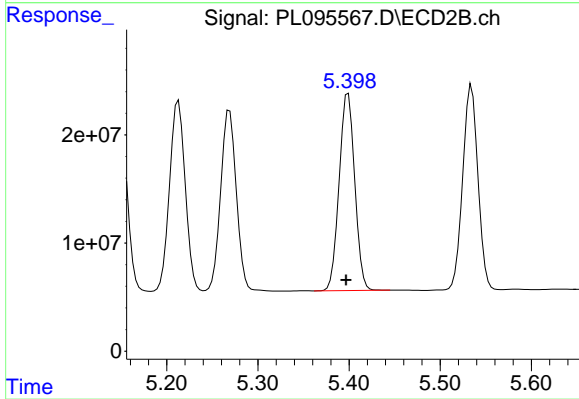
#11 alpha-Chlordane

R.T.: 5.213 min
 Delta R.T.: 0.002 min
 Response: 212505713
 Conc: 53.38 ng/ml



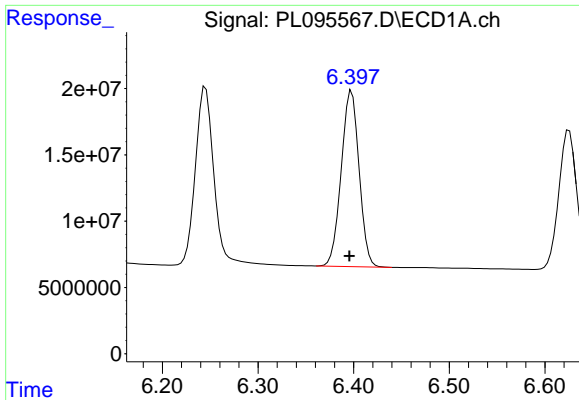
#12 4,4'-DDE

R.T.: 6.245 min
 Delta R.T.: 0.002 min
 Response: 182905822
 Conc: 46.65 ng/ml



#12 4,4'-DDE

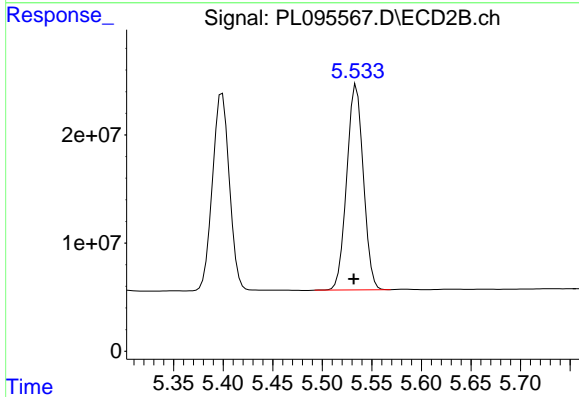
R.T.: 5.399 min
 Delta R.T.: 0.002 min
 Response: 216490915
 Conc: 53.23 ng/ml



#13 Dieldrin

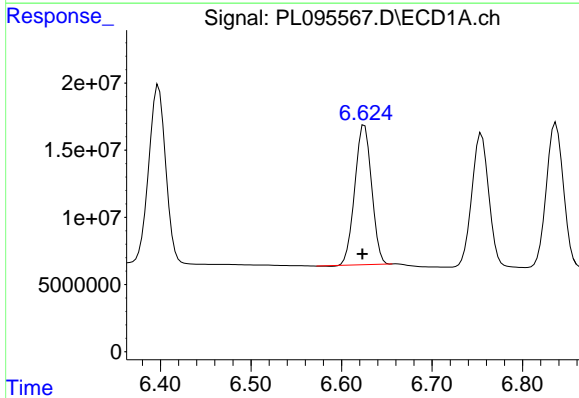
R.T.: 6.398 min
 Delta R.T.: 0.002 min
 Response: 172538659
 Conc: 44.76 ng/ml

Instrument :
 ECD_L
 ClientSampleId :
 PSTDCCC050



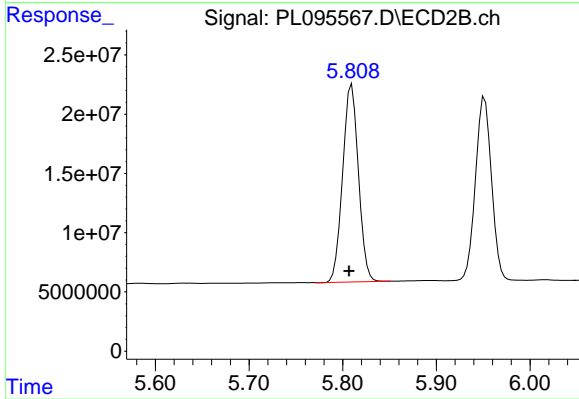
#13 Dieldrin

R.T.: 5.534 min
 Delta R.T.: 0.003 min
 Response: 221658096
 Conc: 54.50 ng/ml



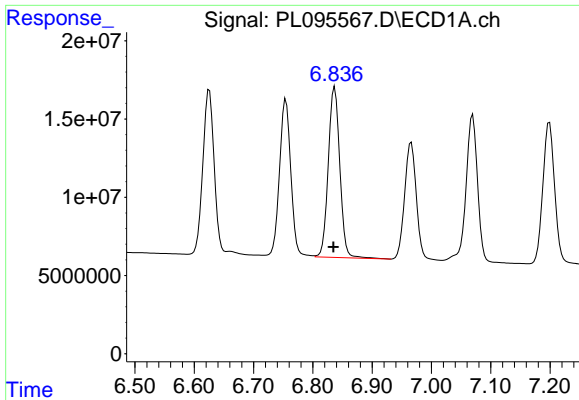
#14 Endrin

R.T.: 6.625 min
 Delta R.T.: 0.002 min
 Response: 133978165
 Conc: 42.07 ng/ml



#14 Endrin

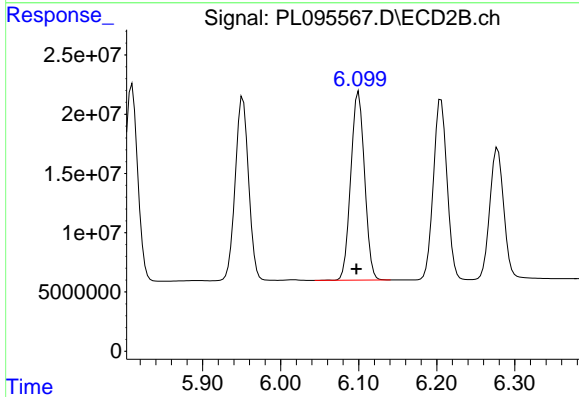
R.T.: 5.810 min
 Delta R.T.: 0.003 min
 Response: 195302517
 Conc: 53.64 ng/ml



#15 Endosulfan II

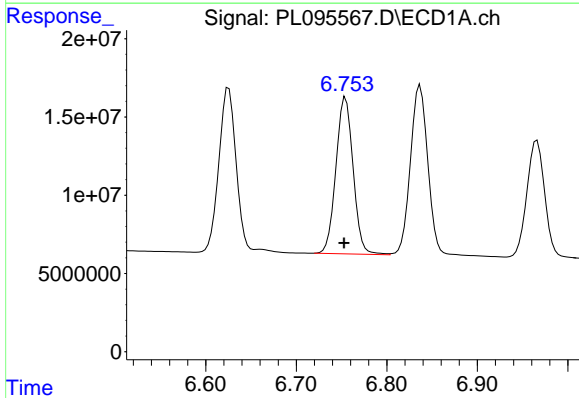
R.T.: 6.837 min
 Delta R.T.: 0.002 min
 Response: 147227120
 Conc: 46.12 ng/ml

Instrument :
 ECD_L
 ClientSampleId :
 PSTDCCC050



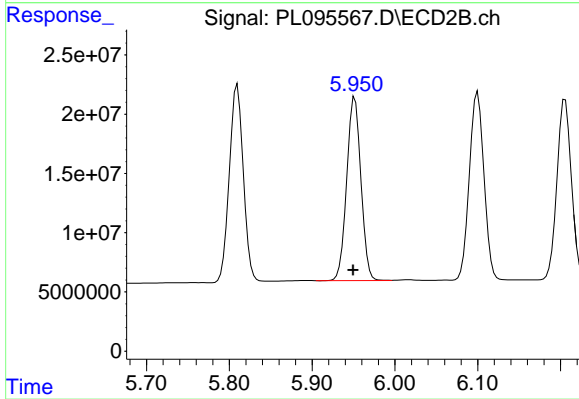
#15 Endosulfan II

R.T.: 6.100 min
 Delta R.T.: 0.003 min
 Response: 195098600
 Conc: 54.33 ng/ml



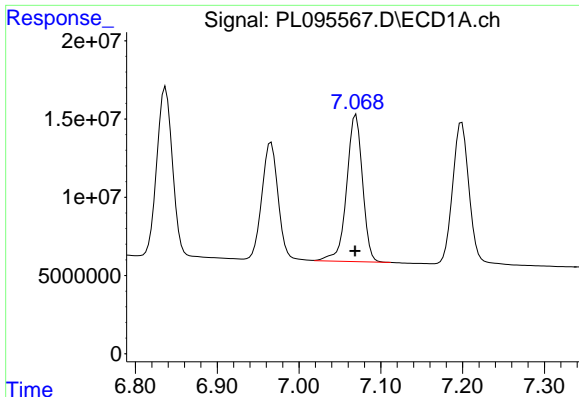
#16 4,4'-DDD

R.T.: 6.754 min
 Delta R.T.: 0.002 min
 Response: 132081067
 Conc: 46.66 ng/ml



#16 4,4'-DDD

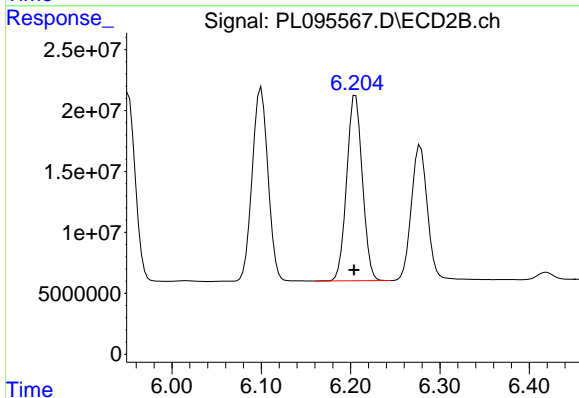
R.T.: 5.952 min
 Delta R.T.: 0.002 min
 Response: 184779296
 Conc: 56.56 ng/ml



#17 4,4'-DDT

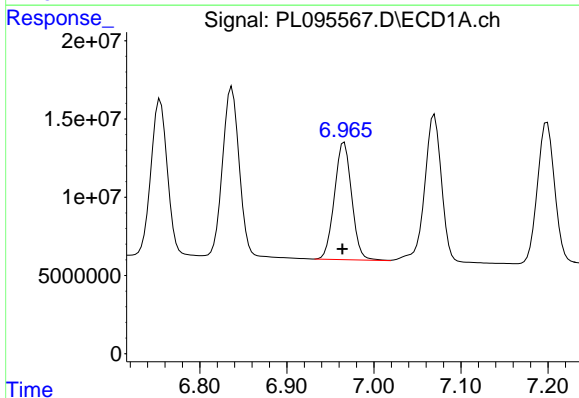
R.T.: 7.070 min
 Delta R.T.: 0.001 min
 Response: 125622893
 Conc: 44.10 ng/ml

Instrument :
 ECD_L
 ClientSampleId :
 PSTDCCC050



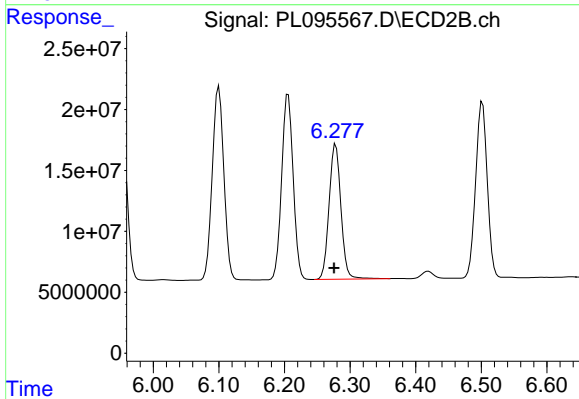
#17 4,4'-DDT

R.T.: 6.206 min
 Delta R.T.: 0.002 min
 Response: 185516918
 Conc: 53.99 ng/ml



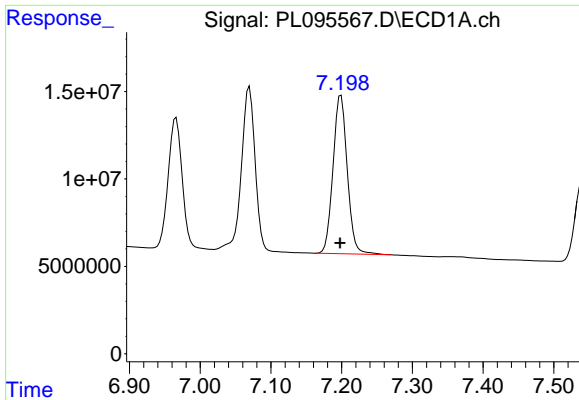
#18 Endrin aldehyde

R.T.: 6.966 min
 Delta R.T.: 0.002 min
 Response: 103349518
 Conc: 44.53 ng/ml



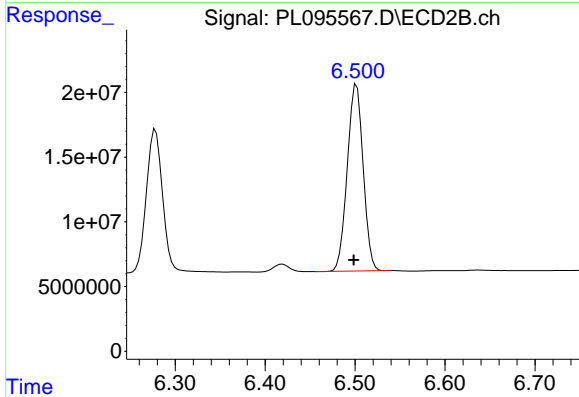
#18 Endrin aldehyde

R.T.: 6.278 min
 Delta R.T.: 0.003 min
 Response: 139150052
 Conc: 53.25 ng/ml

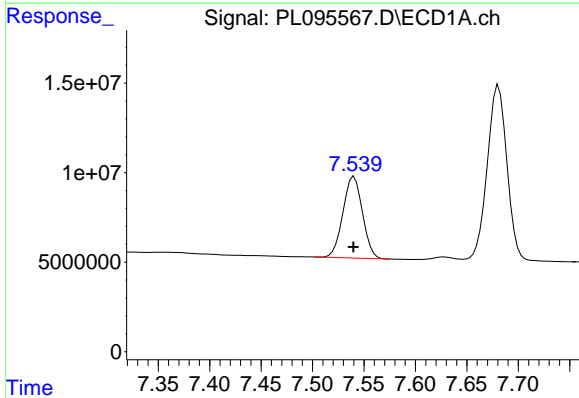


#19 Endosulfan Sulfate
 R.T.: 7.199 min
 Delta R.T.: 0.000 min
 Response: 126866996
 Conc: 45.28 ng/ml

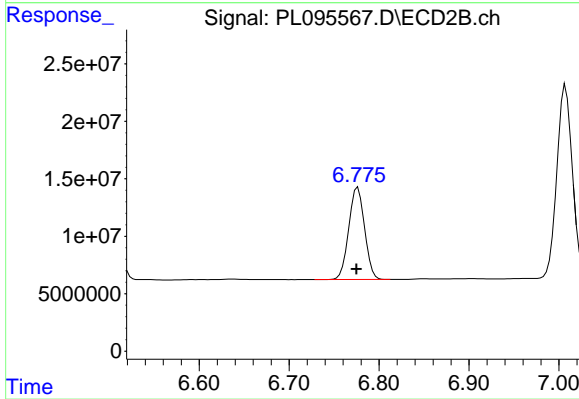
Instrument :
 ECD_L
 ClientSampleId :
 PSTDCCC050



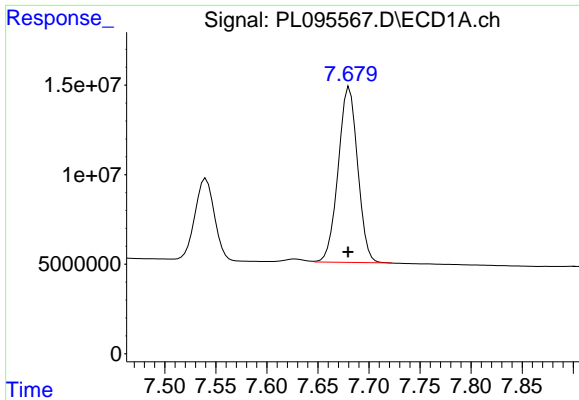
#19 Endosulfan Sulfate
 R.T.: 6.502 min
 Delta R.T.: 0.003 min
 Response: 177108857
 Conc: 53.38 ng/ml



#20 Methoxychlor
 R.T.: 7.540 min
 Delta R.T.: 0.000 min
 Response: 60039251
 Conc: 43.03 ng/ml



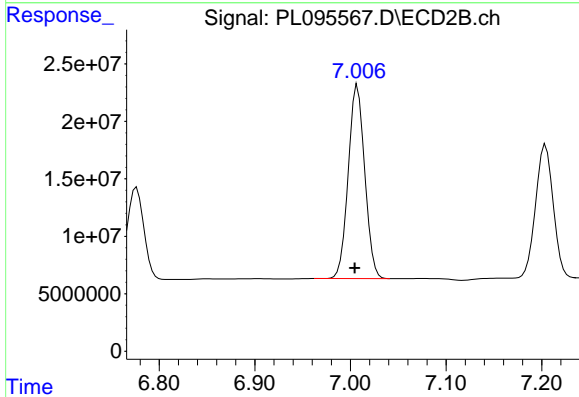
#20 Methoxychlor
 R.T.: 6.776 min
 Delta R.T.: 0.002 min
 Response: 98039780
 Conc: 51.40 ng/ml



#21 Endrin ketone

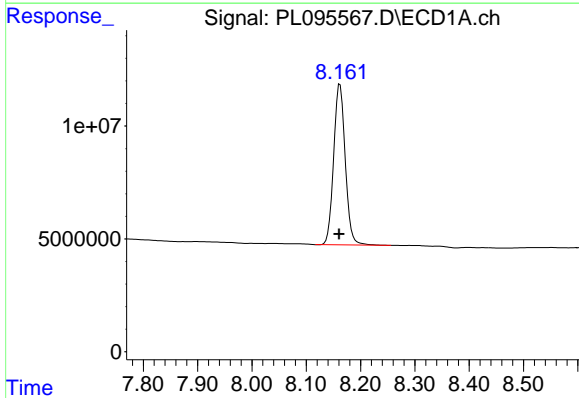
R.T.: 7.681 min
 Delta R.T.: 0.001 min
 Response: 129894741
 Conc: 45.56 ng/ml

Instrument :
 ECD_L
 ClientSampleId :
 PSTDCCC050



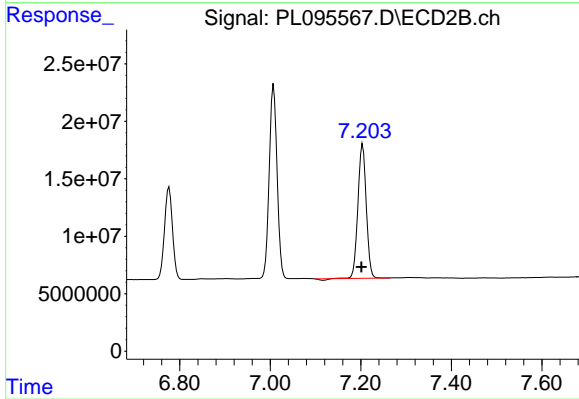
#21 Endrin ketone

R.T.: 7.007 min
 Delta R.T.: 0.003 min
 Response: 202716655
 Conc: 57.57 ng/ml



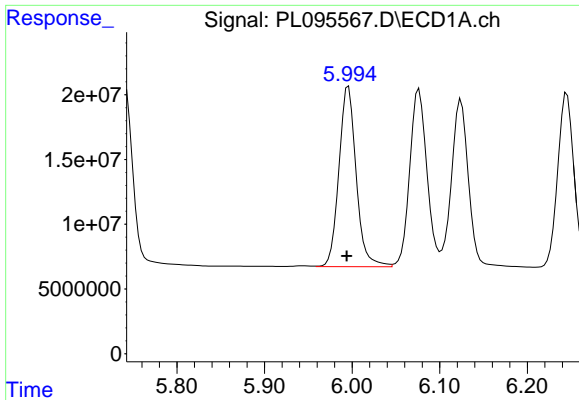
#22 Mirex

R.T.: 8.162 min
 Delta R.T.: 0.002 min
 Response: 105547496
 Conc: 44.42 ng/ml



#22 Mirex

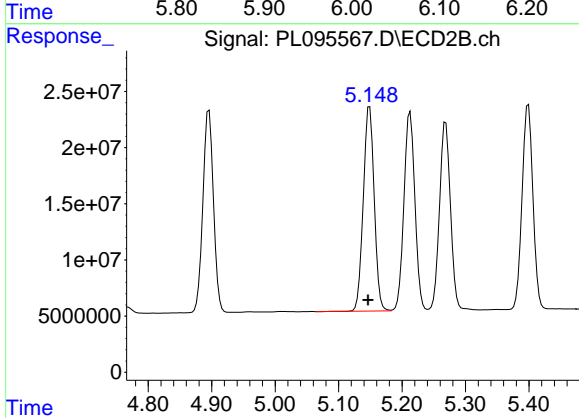
R.T.: 7.204 min
 Delta R.T.: 0.003 min
 Response: 149030033
 Conc: 51.70 ng/ml



#25 Chlordane-3

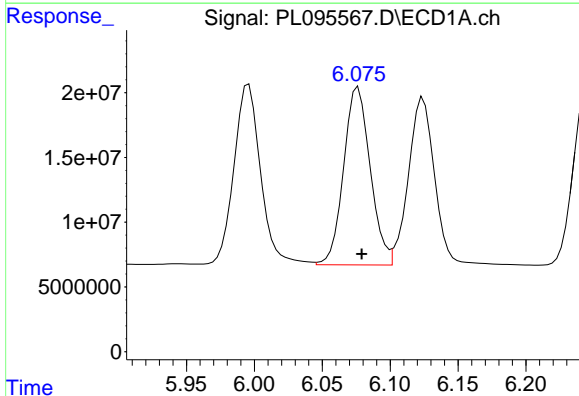
R.T.: 5.996 min
 Delta R.T.: 0.002 min
 Response: 190709344
 Conc: 244.84 ng/ml

Instrument :
 ECD_L
 ClientSampleId :
 PSTDCCC050



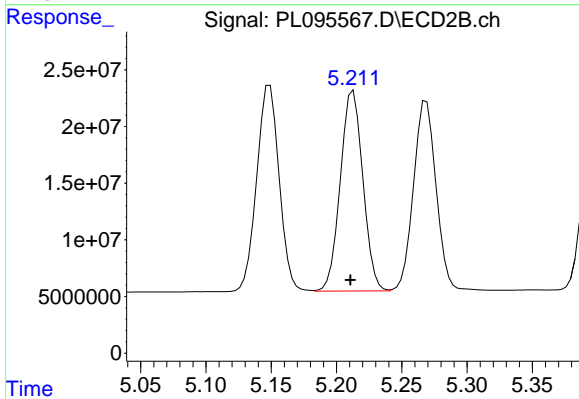
#25 Chlordane-3

R.T.: 5.149 min
 Delta R.T.: 0.002 min
 Response: 217267363
 Conc: 420.55 ng/ml



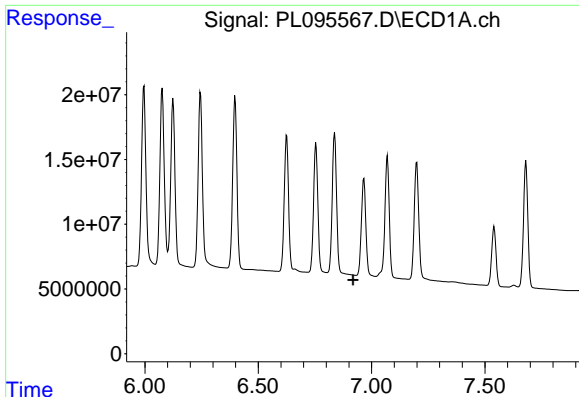
#26 Chlordane-4

R.T.: 6.076 min
 Delta R.T.: -0.003 min
 Response: 187407839
 Conc: 198.75 ng/ml



#26 Chlordane-4

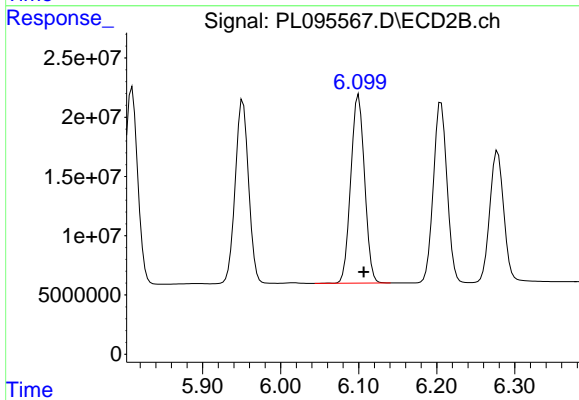
R.T.: 5.213 min
 Delta R.T.: 0.002 min
 Response: 212505713
 Conc: 488.96 ng/ml



#27 Chlordane-5

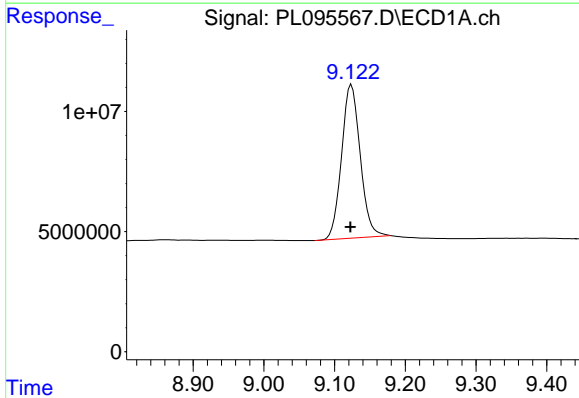
R.T.: 0.000 min
 Exp R.T.: 6.919 min
 Response: 0
 Conc: N.D.

Instrument :
 ECD_L
 ClientSampleId :
 PSTDCCC050



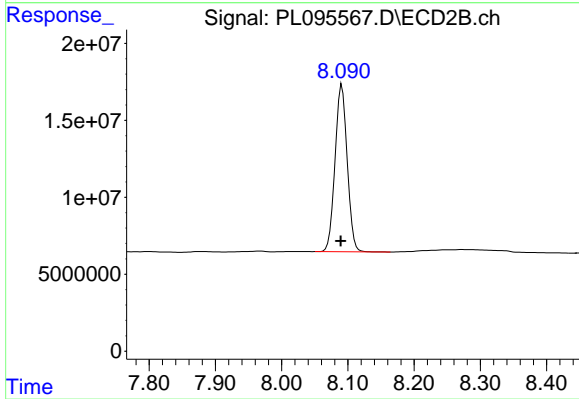
#27 Chlordane-5

R.T.: 6.100 min
 Delta R.T.: -0.006 min
 Response: 195098600
 Conc: 1056.08 ng/ml



#28 Decachlorobiphenyl

R.T.: 9.124 min
 Delta R.T.: 0.002 min
 Response: 117351733
 Conc: 42.35 ng/ml



#28 Decachlorobiphenyl

R.T.: 8.091 min
 Delta R.T.: 0.002 min
 Response: 138528406
 Conc: 46.81 ng/ml