

Data Path : Z:\pestpcbsrv\HPCHEM1\ECD\_L\Data\PL050820\  
 Data File : PL058615.D  
 Signal(s) : Signal #1: ECD1A.ch Signal #2: ECD2B.ch  
 Acq On : 08 May 2020 19:12  
 Operator : AJ\MA  
 Sample : L2506-05  
 Misc :  
 ALS Vial : 25 Sample Multiplier: 1

Instrument :  
 ECD\_L  
 ClientSampleId :  
 TR-04-050720

Integration File signal 1: autoint1.e  
 Integration File signal 2: autoint2.e  
 Quant Time: May 09 00:29:55 2020  
 Quant Method : Z:\pestpcbsrv\HPCHEM1\ECD\_L\methods\PL042820.M  
 Quant Title : GC Extractables  
 QLast Update : Wed Apr 29 00:55:33 2020  
 Response via : Initial Calibration  
 Integrator: ChemStation

Volume Inj. : 1 µl  
 Signal #1 Phase : ZB-MR2 Signal #2 Phase: ZB-MR1  
 Signal #1 Info : 30M x 0.32mm x0.2 Signal #2 Info : 30M x 0.32mm x0.5µm

	Compound	RT#1	RT#2	Resp#1	Resp#2	ng/ml	ng/ml
-----							
System Monitoring Compounds							
1)	SA Tetrachlo...	3.455	3.954	212.3E6	46398619	19.947	21.467
28)	SA Decachlor...	8.201	8.977	206.1E6	44842034	19.062	20.210
Target Compounds							
4)	MA Heptachlor	4.481	5.136	8385717	6333452	0.475	1.833 #
7)	B delta-BHC	0.000	4.985f	0	2654625	N.D.	1.056 #
8)	B Heptachlo...	5.176	5.803	16236615	4314492	1.069	1.348 #
9)	A Endosulfan I	5.513	6.147f	1126179	3302345	0.080	1.068 #
10)	B gamma-Chl...	5.372f	6.035	16256168	4671677	1.056	1.384 #
11)	B alpha-Chl...	5.442	6.093f	10198578	2720584	0.672	0.800
15)	B Endosulfa...	6.285	6.868f	52296641	1075933	4.133	0.404 #
16)	A 4,4'-DDD	6.132	0.000	19722765	0	1.682	N.D. #
21)	B Endrin ke...	0.000	7.663	0	515343	N.D.	0.211 #
23)	Chlordane-1	4.327	4.953f	2334443	-233146	5.431	N.D. #
24)	Chlordane-2	4.811	0.000	1024973	0	2.468	N.D. #
25)	Chlordane-3	5.372f	6.035	16256168	4671677	12.377	11.680
26)	Chlordane-4	5.442	6.093f	10198578	2720584	9.292	5.597 #
27)	Chlordane-5	6.285	0.000	52296641	0	128.571	N.D. #
-----							

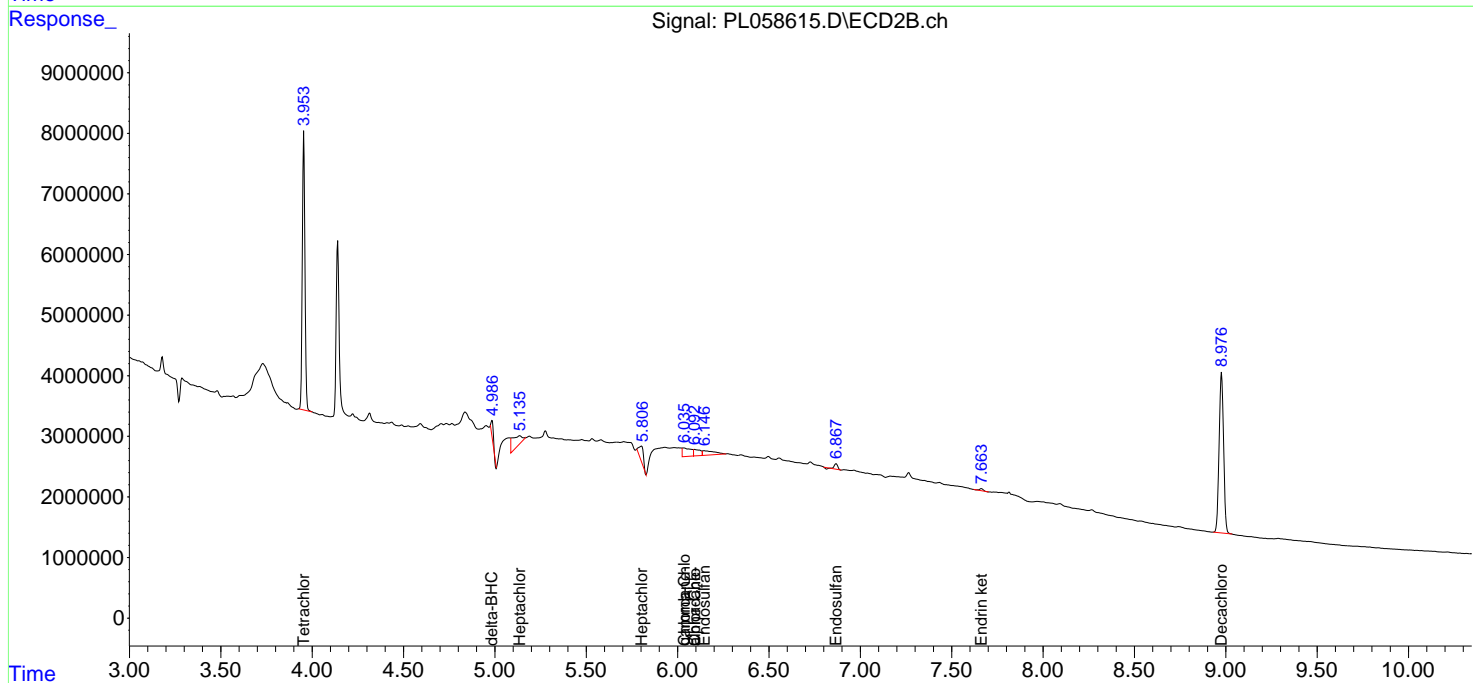
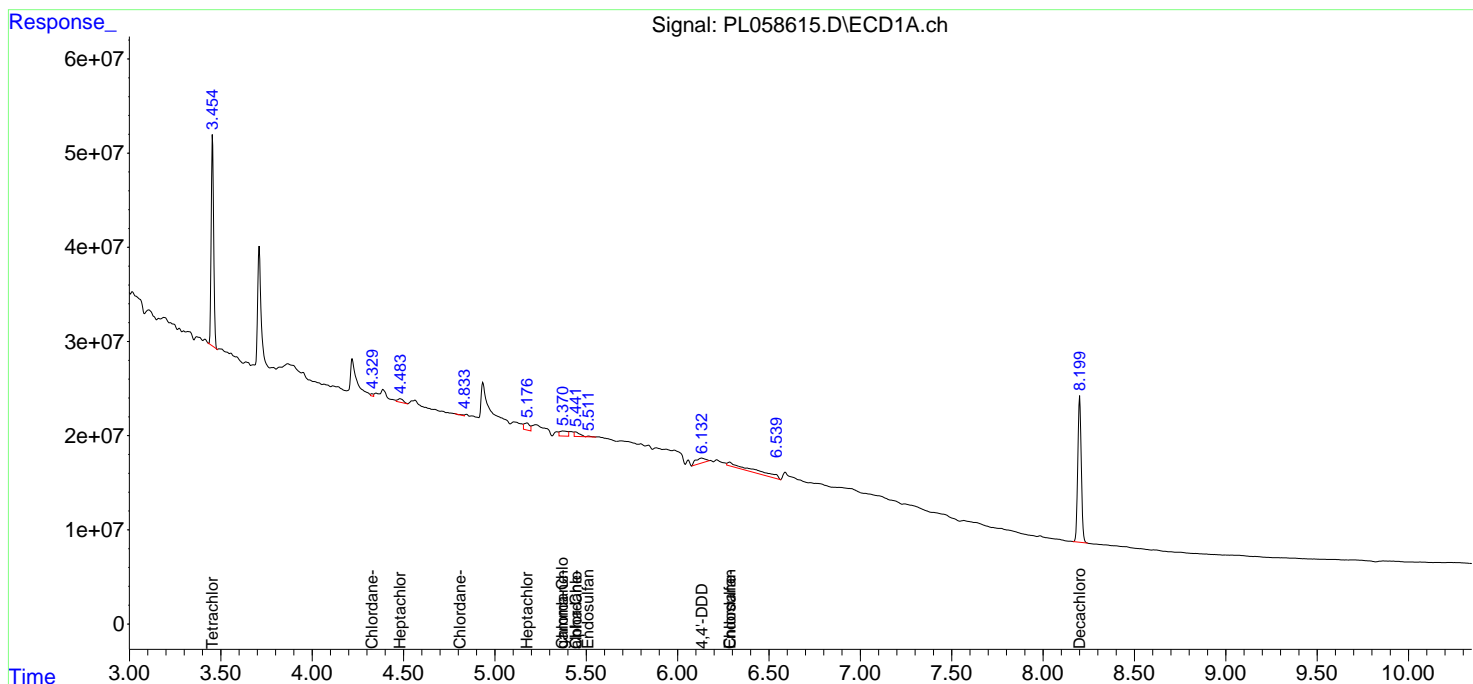
(f)=RT Delta > 1/2 Window (#)=Amounts differ by > 25% (m)=manual int.

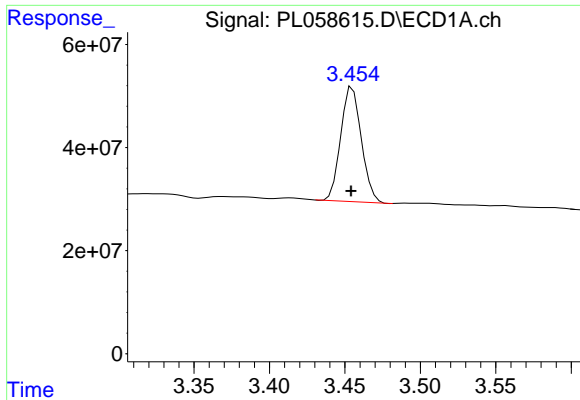
Data Path : Z:\pestpcbsrv\HPCHEM1\ECD\_L\Data\PL050820\  
 Data File : PL058615.D  
 Signal(s) : Signal #1: ECD1A.ch Signal #2: ECD2B.ch  
 Acq On : 08 May 2020 19:12  
 Operator : AJ\MA  
 Sample : L2506-05  
 Misc :  
 ALS Vial : 25 Sample Multiplier: 1

Instrument :  
 ECD\_L  
 ClientSampled :  
 TR-04-050720

Integration File signal 1: autoint1.e  
 Integration File signal 2: autoint2.e  
 Quant Time: May 09 00:29:55 2020  
 Quant Method : Z:\pestpcbsrv\HPCHEM1\ECD\_L\methods\PL042820.M  
 Quant Title : GC Extractables  
 QLast Update : Wed Apr 29 00:55:33 2020  
 Response via : Initial Calibration  
 Integrator: ChemStation

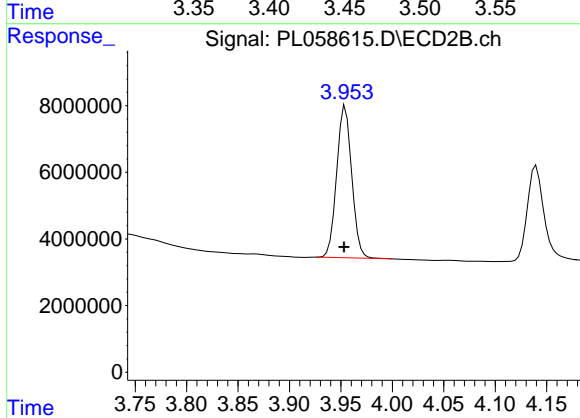
Volume Inj. : 1 µl  
 Signal #1 Phase : ZB-MR2 Signal #2 Phase: ZB-MR1  
 Signal #1 Info : 30M x 0.32mm x0.2 Signal #2 Info : 30M x 0.32mm x0.5µm



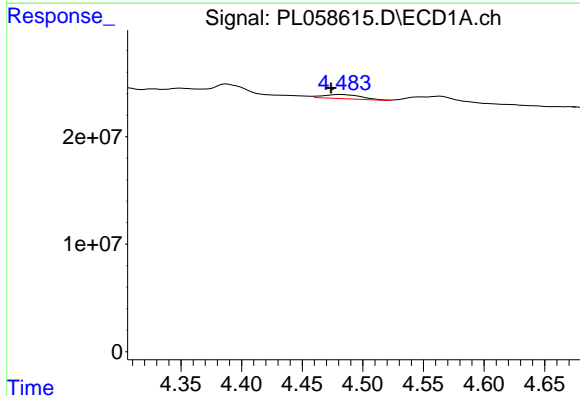


#1 Tetrachloro-m-xylene  
 R.T.: 3.455 min  
 Delta R.T.: 0.001 min  
 Response: 212277236  
 Conc: 19.95 ng/ml

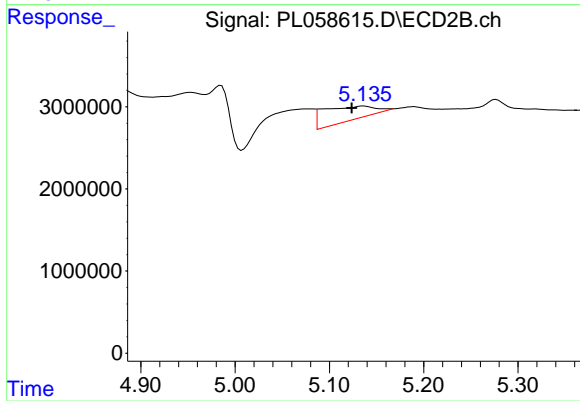
**Instrument :**  
 ECD\_L  
**ClientSampled :**  
 TR-04-050720



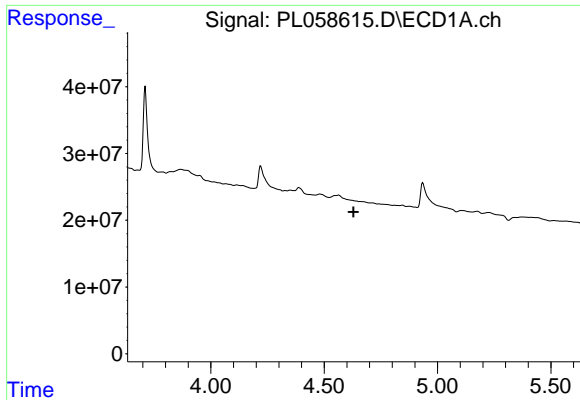
#1 Tetrachloro-m-xylene  
 R.T.: 3.954 min  
 Delta R.T.: 0.001 min  
 Response: 46398619  
 Conc: 21.47 ng/ml



#4 Heptachlor  
 R.T.: 4.481 min  
 Delta R.T.: 0.007 min  
 Response: 8385717  
 Conc: 0.47 ng/ml



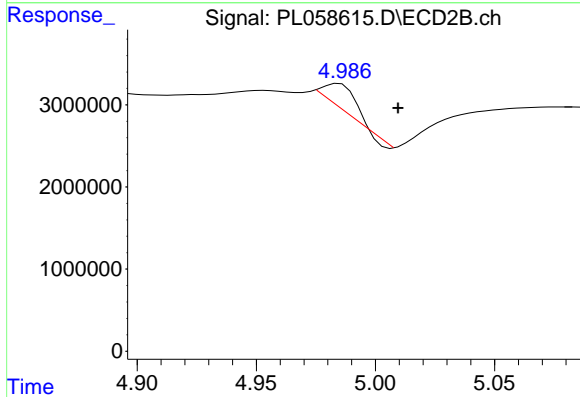
#4 Heptachlor  
 R.T.: 5.136 min  
 Delta R.T.: 0.013 min  
 Response: 6333452  
 Conc: 1.83 ng/ml



#7 delta-BHC

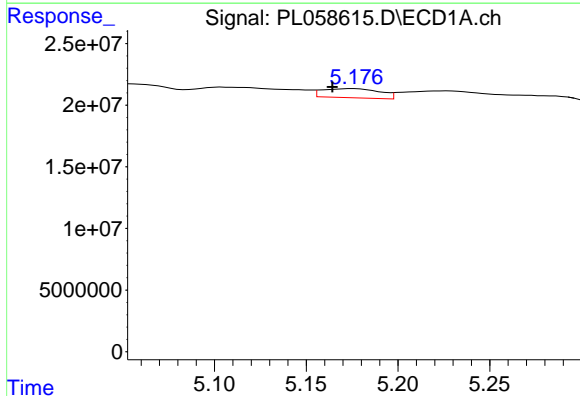
R.T.: 0.000 min  
 Exp R.T.: 4.630 min  
 Response: 0  
 Conc: N.D.

Instrument :  
 ECD\_L  
 ClientSampled :  
 TR-04-050720



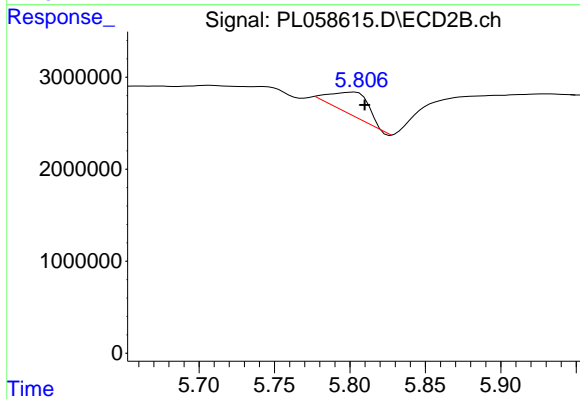
#7 delta-BHC

R.T.: 4.985 min  
 Delta R.T.: -0.024 min  
 Response: 2654625  
 Conc: 1.06 ng/ml



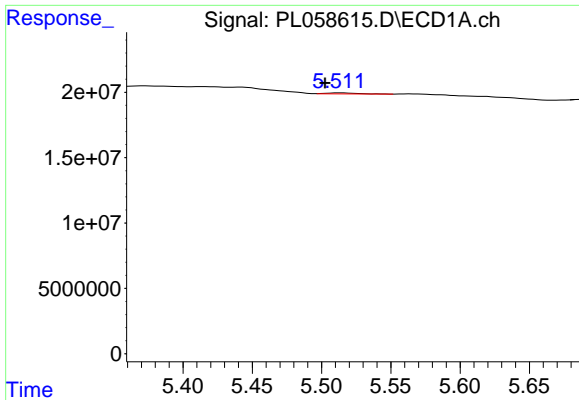
#8 Heptachlor epoxide

R.T.: 5.176 min  
 Delta R.T.: 0.012 min  
 Response: 16236615  
 Conc: 1.07 ng/ml



#8 Heptachlor epoxide

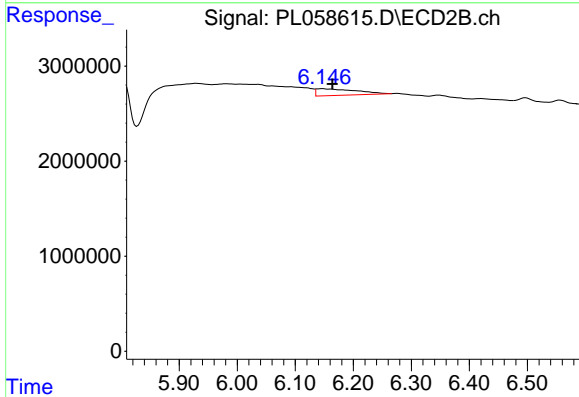
R.T.: 5.803 min  
 Delta R.T.: -0.007 min  
 Response: 4314492  
 Conc: 1.35 ng/ml



#9 Endosulfan I

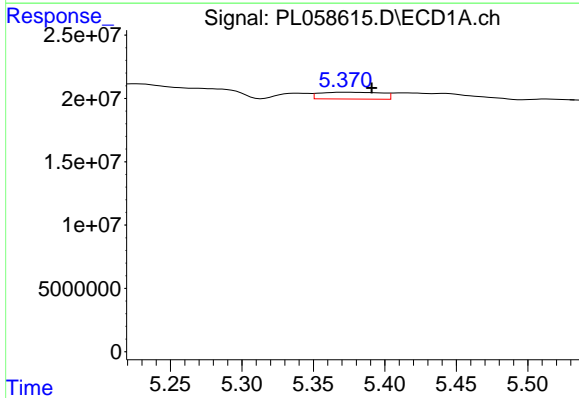
R.T.: 5.513 min  
 Delta R.T.: 0.010 min  
 Response: 1126179  
 Conc: 0.08 ng/ml

Instrument :  
 ECD\_L  
 ClientSampleId :  
 TR-04-050720



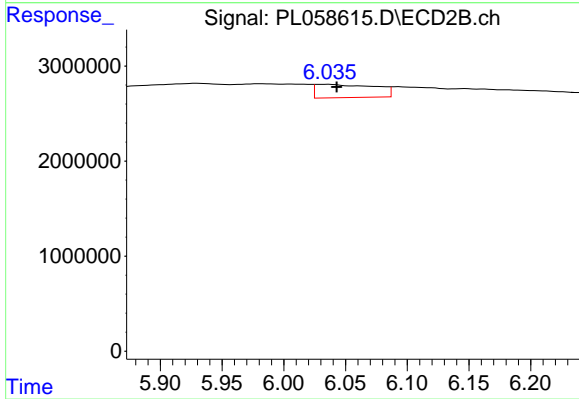
#9 Endosulfan I

R.T.: 6.147 min  
 Delta R.T.: -0.017 min  
 Response: 3302345  
 Conc: 1.07 ng/ml



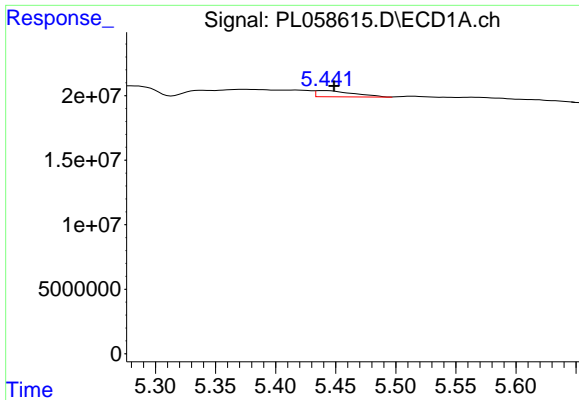
#10 gamma-Chlordane

R.T.: 5.372 min  
 Delta R.T.: -0.019 min  
 Response: 16256168  
 Conc: 1.06 ng/ml



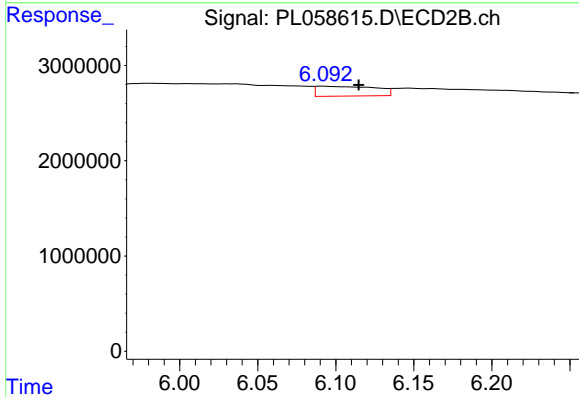
#10 gamma-Chlordane

R.T.: 6.035 min  
 Delta R.T.: -0.008 min  
 Response: 4671677  
 Conc: 1.38 ng/ml

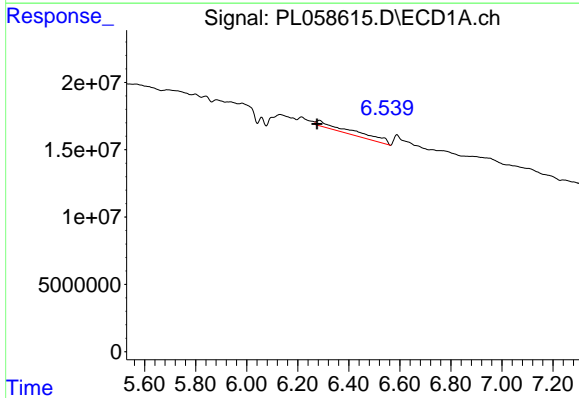


#11 alpha-Chlordane  
 R.T.: 5.442 min  
 Delta R.T.: -0.007 min  
 Response: 10198578  
 Conc: 0.67 ng/ml

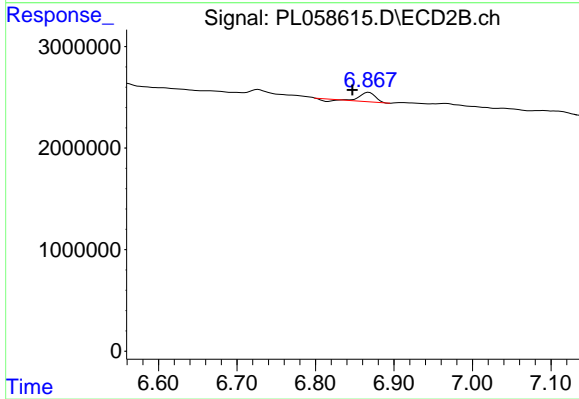
Instrument :  
 ECD\_L  
 ClientSampleId :  
 TR-04-050720



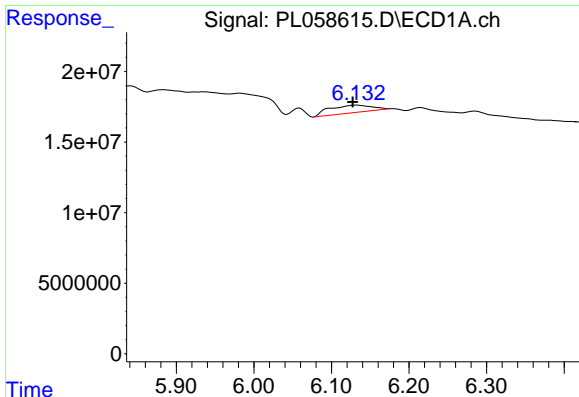
#11 alpha-Chlordane  
 R.T.: 6.093 min  
 Delta R.T.: -0.021 min  
 Response: 2720584  
 Conc: 0.80 ng/ml



#15 Endosulfan II  
 R.T.: 6.285 min  
 Delta R.T.: 0.010 min  
 Response: 52296641  
 Conc: 4.13 ng/ml



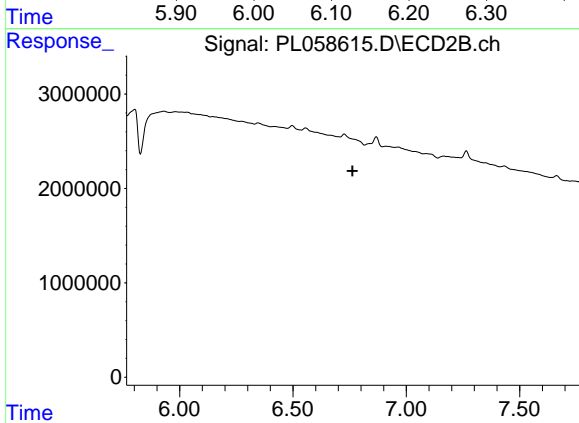
#15 Endosulfan II  
 R.T.: 6.868 min  
 Delta R.T.: 0.021 min  
 Response: 1075933  
 Conc: 0.40 ng/ml



#16 4,4'-DDD

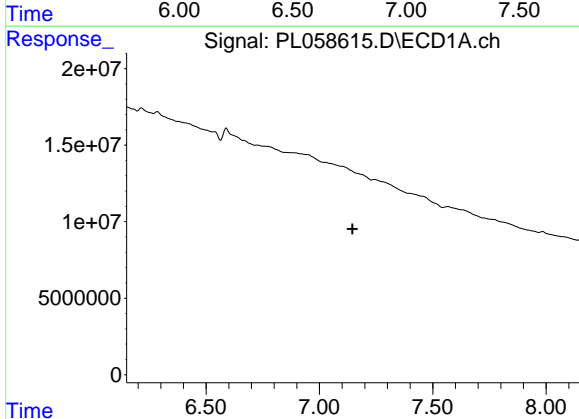
R.T.: 6.132 min  
 Delta R.T.: 0.004 min  
 Response: 19722765  
 Conc: 1.68 ng/ml

Instrument :  
 ECD\_L  
 ClientSampleId :  
 TR-04-050720



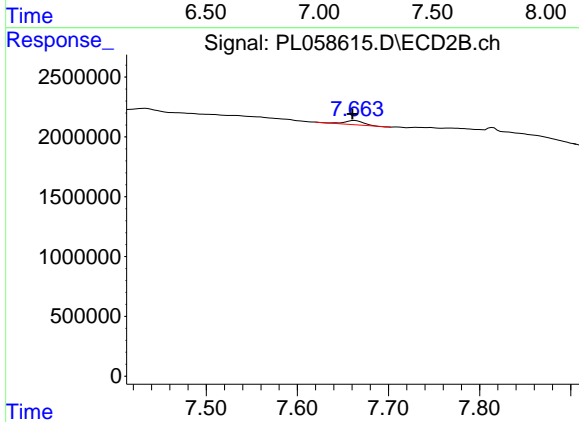
#16 4,4'-DDD

R.T.: 0.000 min  
 Exp R.T. : 6.763 min  
 Response: 0  
 Conc: N.D.



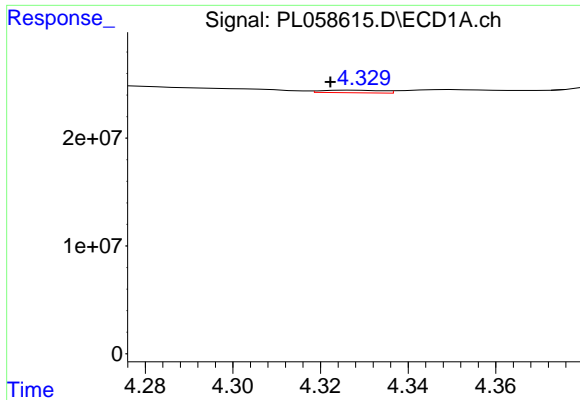
#21 Endrin ketone

R.T.: 0.000 min  
 Exp R.T. : 7.146 min  
 Response: 0  
 Conc: N.D.



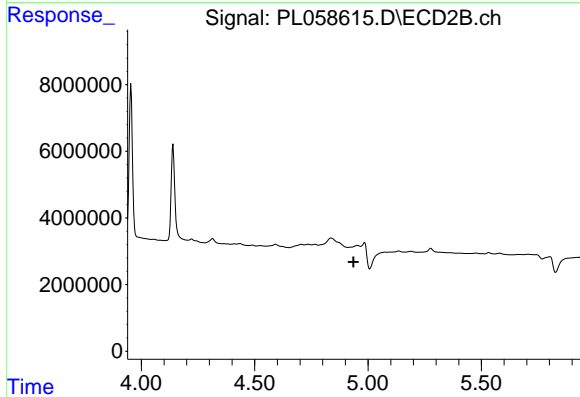
#21 Endrin ketone

R.T.: 7.663 min  
 Delta R.T.: 0.003 min  
 Response: 515343  
 Conc: 0.21 ng/ml

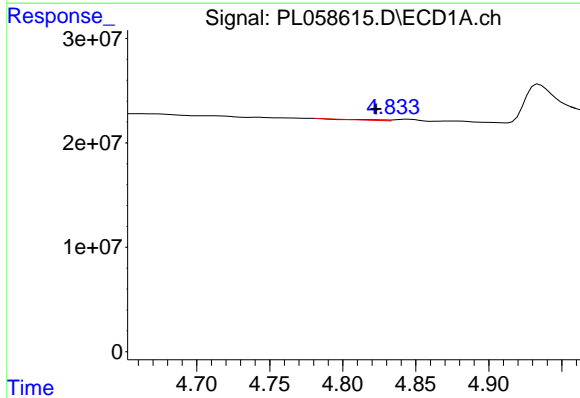


#23 Chlordane-1  
 R.T.: 4.327 min  
 Delta R.T.: 0.005 min  
 Response: 2334443  
 Conc: 5.43 ng/ml

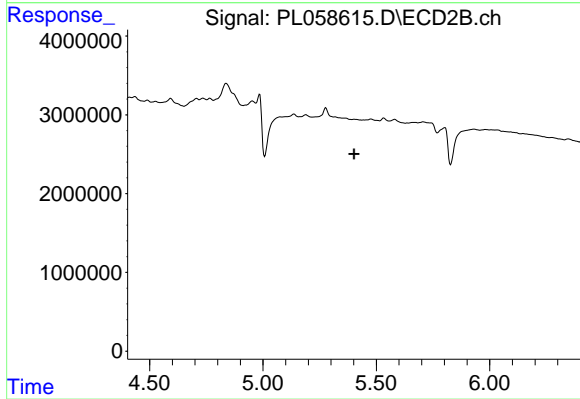
Instrument :  
 ECD\_L  
 ClientSampleId :  
 TR-04-050720



#23 Chlordane-1  
 R.T.: 4.953 min  
 Delta R.T.: 0.017 min  
 Response: -233146  
 Conc: N.D.

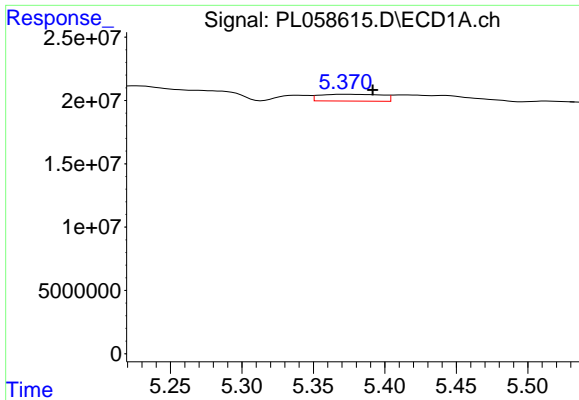


#24 Chlordane-2  
 R.T.: 4.811 min  
 Delta R.T.: -0.012 min  
 Response: 1024973  
 Conc: 2.47 ng/ml



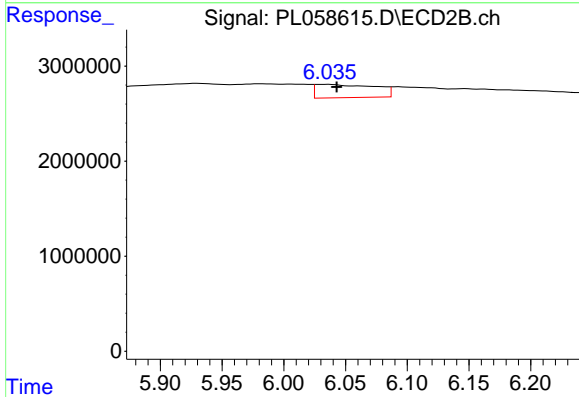
#24 Chlordane-2  
 R.T.: 0.000 min  
 Exp R.T.: 5.402 min  
 Response: 0  
 Conc: N.D.



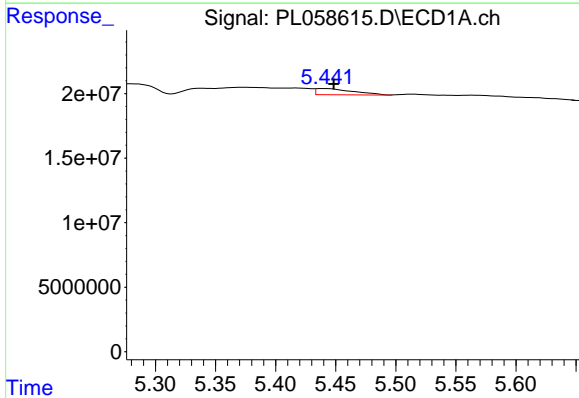


#25 Chlordane-3  
 R.T.: 5.372 min  
 Delta R.T.: -0.020 min  
 Response: 16256168  
 Conc: 12.38 ng/ml

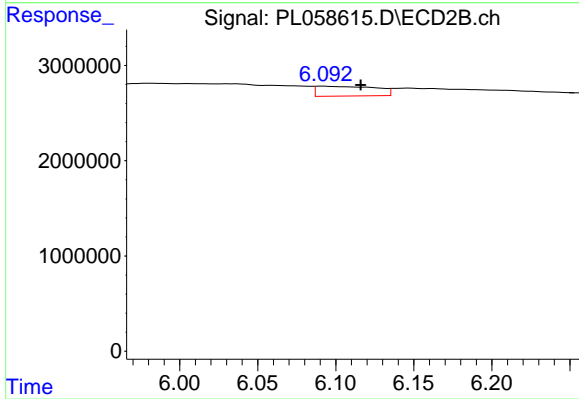
Instrument :  
 ECD\_L  
 ClientSampleId :  
 TR-04-050720



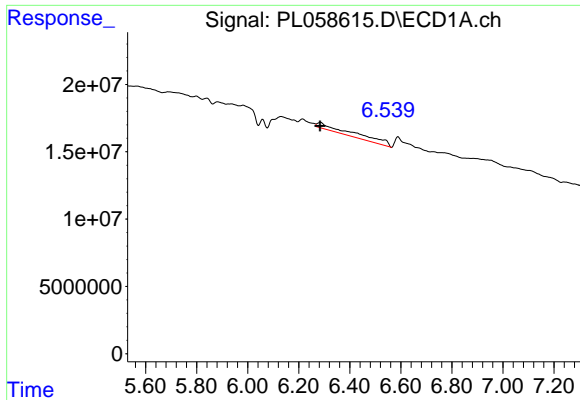
#25 Chlordane-3  
 R.T.: 6.035 min  
 Delta R.T.: -0.008 min  
 Response: 4671677  
 Conc: 11.68 ng/ml



#26 Chlordane-4  
 R.T.: 5.442 min  
 Delta R.T.: -0.006 min  
 Response: 10198578  
 Conc: 9.29 ng/ml

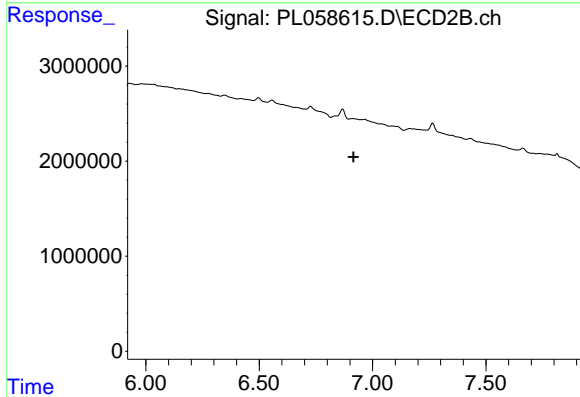


#26 Chlordane-4  
 R.T.: 6.093 min  
 Delta R.T.: -0.023 min  
 Response: 2720584  
 Conc: 5.60 ng/ml

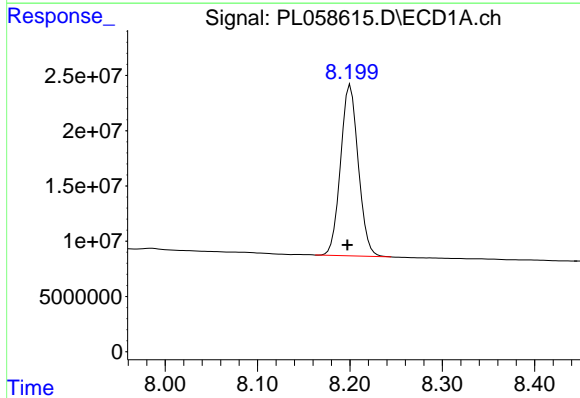


#27 Chlordane-5  
 R.T.: 6.285 min  
 Delta R.T.: 0.002 min  
 Response: 52296641  
 Conc: 128.57 ng/ml

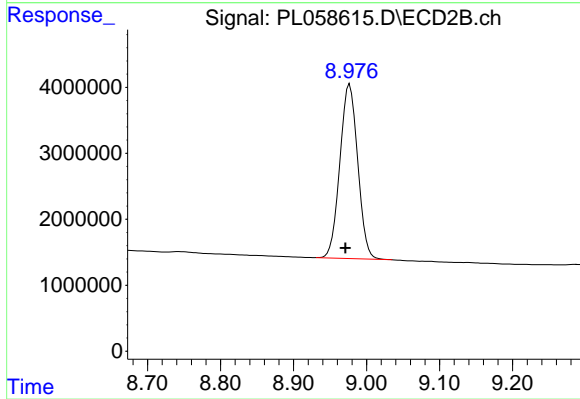
Instrument :  
 ECD\_L  
 ClientSampleId :  
 TR-04-050720



#27 Chlordane-5  
 R.T.: 0.000 min  
 Exp R.T. : 6.916 min  
 Response: 0  
 Conc: N.D.



#28 Decachlorobiphenyl  
 R.T.: 8.201 min  
 Delta R.T.: 0.003 min  
 Response: 206144518  
 Conc: 19.06 ng/ml



#28 Decachlorobiphenyl  
 R.T.: 8.977 min  
 Delta R.T.: 0.006 min  
 Response: 44842034  
 Conc: 20.21 ng/ml