

Data Path : Z:\pestpcbsrv\HPCHEM1\ECD_L\Data\PL050825\
 Data File : PL095597.D
 Signal(s) : Signal #1: ECD1A.ch Signal #2: ECD2B.ch
 Acq On : 08 May 2025 17:45
 Operator : AR\AJ
 Sample : Q1964-01MSD
 Misc :
 ALS Vial : 18 Sample Multiplier: 1

Instrument :
 ECD_L
ClientSampleId :
 MH-LLMSD

Manual Integrations
APPROVED
 Reviewed By :Abdul Mirza 05/09/2025
 Supervised By :mohammad ahmed 05/12/2025

Integration File signal 1: autoint1.e
 Integration File signal 2: autoint2.e
 Quant Time: May 09 02:07:22 2025
 Quant Method : Z:\pestpcbsrv\HPCHEM1\ECD_L\methods\PL042325.M
 Quant Title : GC Extractables
 QLast Update : Wed Apr 23 16:23:18 2025
 Response via : Initial Calibration
 Integrator: ChemStation

Volume Inj. : 1 µl
 Signal #1 Phase : ZB-MR2 Signal #2 Phase: ZB-MR2
 Signal #1 Info : 30M x 0.32mm x0.5 Signal #2 Info : 30M x 0.32mm x0.25µm

Compound	RT#1	RT#2	Resp#1	Resp#2	ng/ml	ng/ml

System Monitoring Compounds						
1) SA Tetrachlo...	3.593	2.911	45070436	55849748	13.805	17.564 #
28) SA Decachlor...	9.116	8.089	25950134	34106238	9.366	11.525
Target Compounds						
2) A alpha-BHC	4.043	3.419	240.5E6	307.8E6	48.547m	69.197m#
3) MA gamma-BHC...	4.375	3.754	235.5E6	290.0E6	49.742	65.936 #
4) MA Heptachlor	4.973	4.108	237.0E6	273.2E6	51.805	62.717
5) MB Aldrin	5.315	4.393	241.3E6	268.9E6	52.526	65.330
6) B beta-BHC	4.561	4.048	102.5E6	129.3E6	49.594	62.266 #
7) B delta-BHC	4.808	4.284	233.7E6	292.8E6	50.258m	66.819 #
8) B Heptachlo...	5.735	4.896	215.4E6	248.8E6	53.781	64.406
9) A Endosulfan I	6.119	5.269	205.5E6	237.3E6	54.121	64.816
10) B gamma-Chl...	5.990	5.149	222.9E6	256.7E6	54.633	63.351
11) B alpha-Chl...	6.071	5.213	219.0E6	251.5E6	53.854	63.171
12) B 4,4'-DDE	6.240	5.399	216.1E6	254.2E6	55.114	62.512
13) MA Dieldrin	6.390	5.534	205.1E6	263.6E6	53.218m	64.810
14) MA Endrin	6.619	5.809	173.0E6	236.5E6	54.316	64.956
15) B Endosulfa...	6.831	6.100	172.5E6	229.8E6	54.046	63.995
16) A 4,4'-DDD	6.749	5.951	158.2E6	211.9E6	55.869	64.864
17) MA 4,4'-DDT	7.063	6.205	147.3E6	215.0E6	51.703	62.569
18) B Endrin al...	6.960	6.277	122.2E6	164.4E6	52.635	62.902
19) B Endosulfa...	7.193	6.499	149.6E6	204.8E6	53.382	61.713m
20) A Methoxychlor	7.535	6.775	69097138	114.1E6	49.527	59.809
21) B Endrin ke...	7.675	7.007	149.4E6	236.0E6	52.388	67.033 #
22) Mirex	8.156	7.201	122.4E6	173.0E6	51.502	60.020m

(f)=RT Delta > 1/2 Window (#)=Amounts differ by > 25% (m)=manual int.

Data Path : Z:\pestpcbsrv\HPCHEM1\ECD_L\Data\PL050825\
 Data File : PL095597.D
 Signal(s) : Signal #1: ECD1A.ch Signal #2: ECD2B.ch
 Acq On : 08 May 2025 17:45
 Operator : AR\AJ
 Sample : Q1964-01MSD
 Misc :
 ALS Vial : 18 Sample Multiplier: 1

Instrument :

ECD_L

ClientSampleId :

MH-LLMSD

Manual Integrations

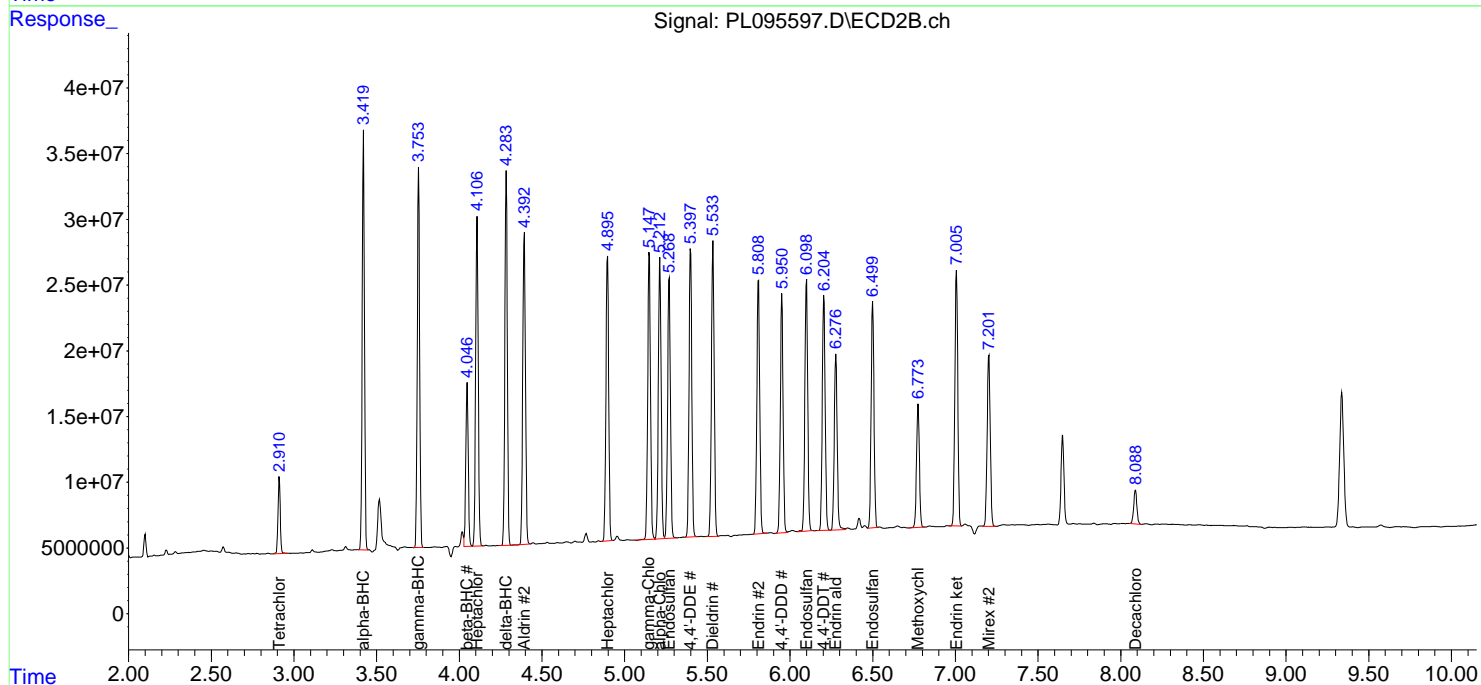
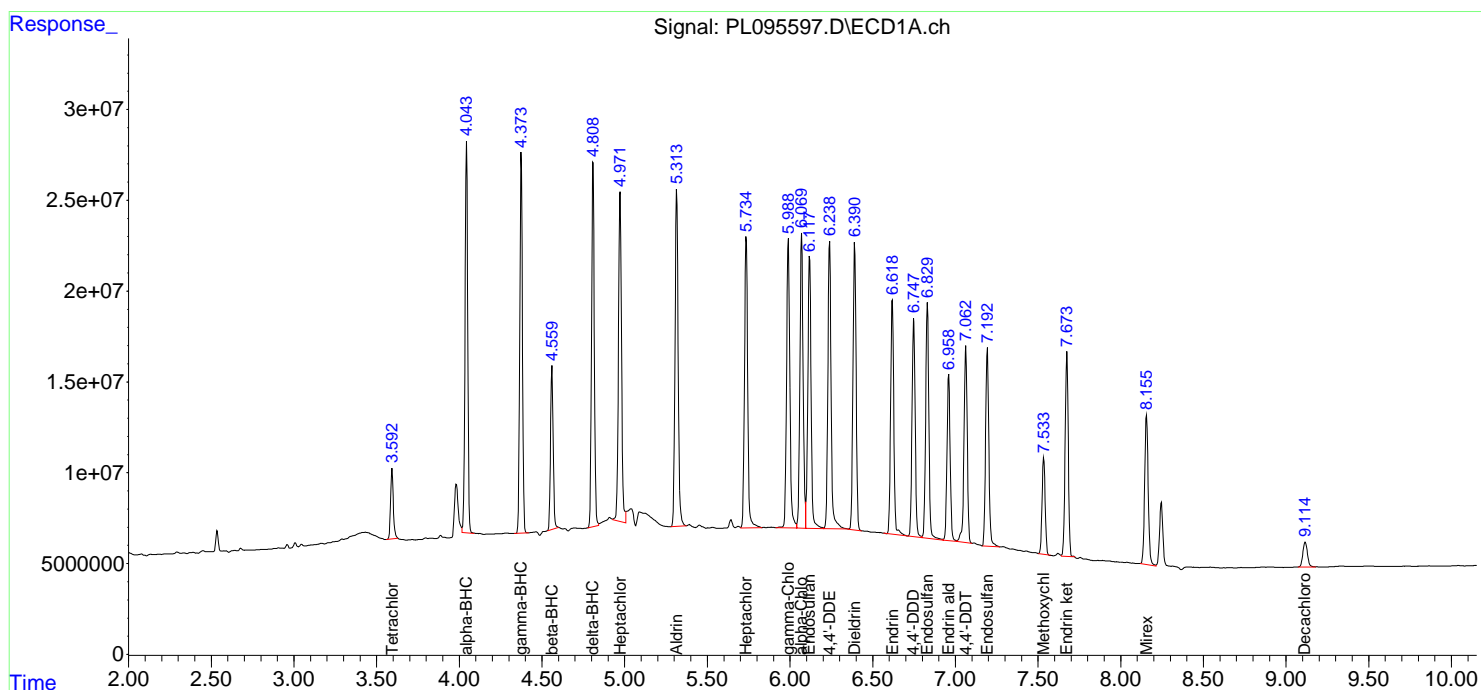
APPROVED

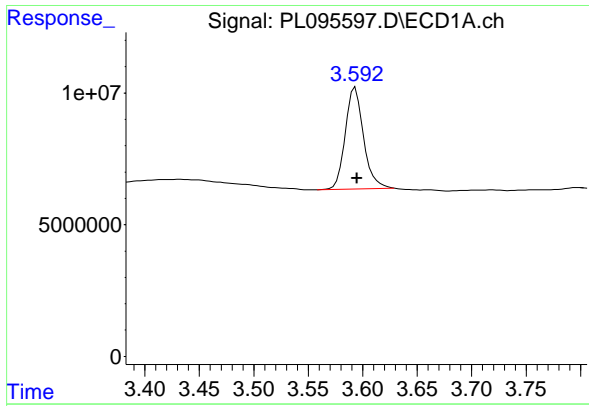
Reviewed By :Abdul Mirza 05/09/2025

Supervised By :mohammad ahmed 05/12/2025

Integration File signal 1: autoint1.e
 Integration File signal 2: autoint2.e
 Quant Time: May 09 02:07:22 2025
 Quant Method : Z:\pestpcbsrv\HPCHEM1\ECD_L\methods\PL042325.M
 Quant Title : GC Extractables
 QLast Update : Wed Apr 23 16:23:18 2025
 Response via : Initial Calibration
 Integrator: ChemStation

Volume Inj. : 1 µl
 Signal #1 Phase : ZB-MR1 Signal #2 Phase: ZB-MR2
 Signal #1 Info : 30M x 0.32mm x0.5 Signal #2 Info : 30M x 0.32mm x0.25µm





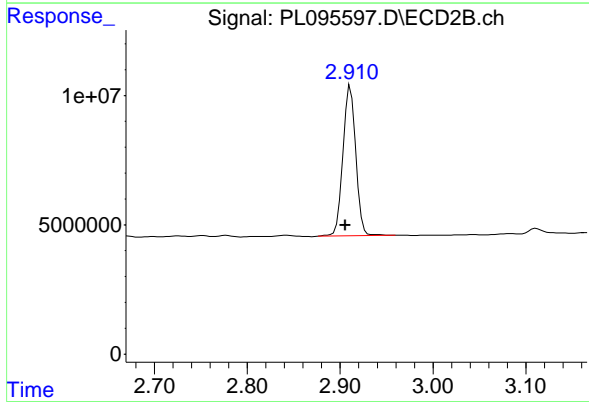
#1 Tetrachloro-m-xylene

R.T.: 3.593 min
 Delta R.T.: -0.002 min
 Response: 45070436
 Conc: 13.81 ng/ml

Instrument : ECD_L
 Client SampleId : MH-LLMSD

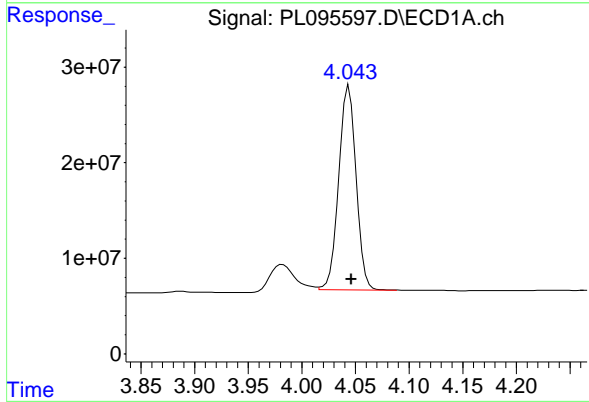
Manual Integrations
 APPROVED

Reviewed By :Abdul Mirza 05/09/2025
 Supervised By :mohammad ahmed 05/12/2025



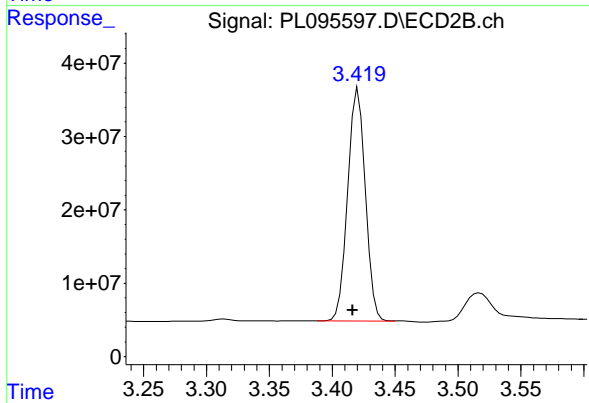
#1 Tetrachloro-m-xylene

R.T.: 2.911 min
 Delta R.T.: 0.006 min
 Response: 55849748
 Conc: 17.56 ng/ml



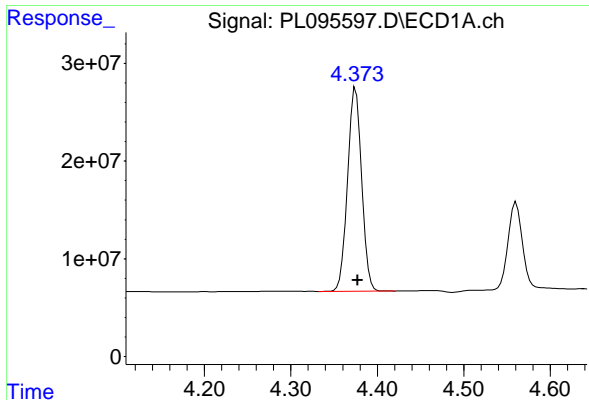
#2 alpha-BHC

R.T.: 4.043 min
 Delta R.T.: -0.004 min
 Response: 240490870
 Conc: 48.55 ng/ml m



#2 alpha-BHC

R.T.: 3.419 min
 Delta R.T.: 0.003 min
 Response: 307837859
 Conc: 69.20 ng/ml m



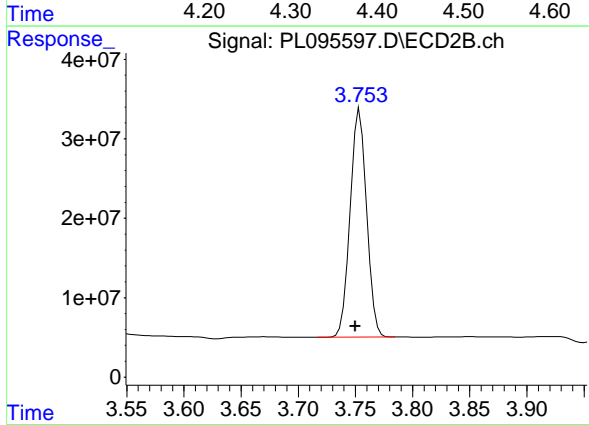
#3 gamma-BHC (Lindane)

R.T.: 4.375 min
 Delta R.T.: -0.003 min
 Response: 235476950
 Conc: 49.74 ng/ml

Instrument :
 ECD_L
 ClientSampleId :
 MH-LLMSD

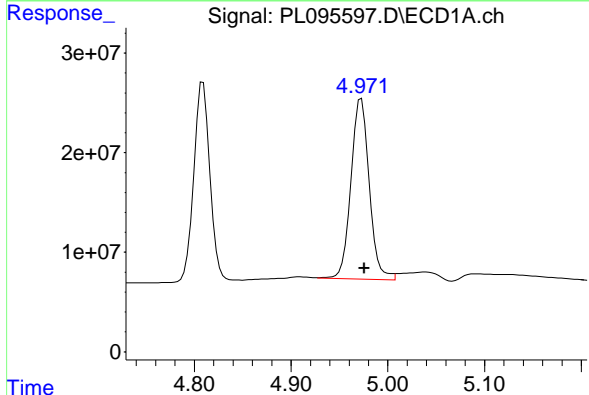
Manual Integrations
 APPROVED

Reviewed By :Abdul Mirza 05/09/2025
 Supervised By :mohammad ahmed 05/12/2025



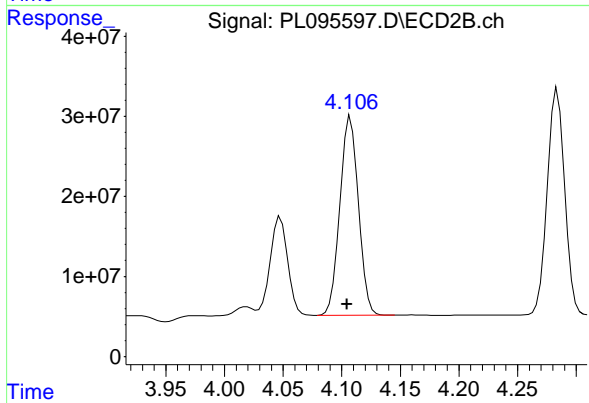
#3 gamma-BHC (Lindane)

R.T.: 3.754 min
 Delta R.T.: 0.004 min
 Response: 290000837
 Conc: 65.94 ng/ml



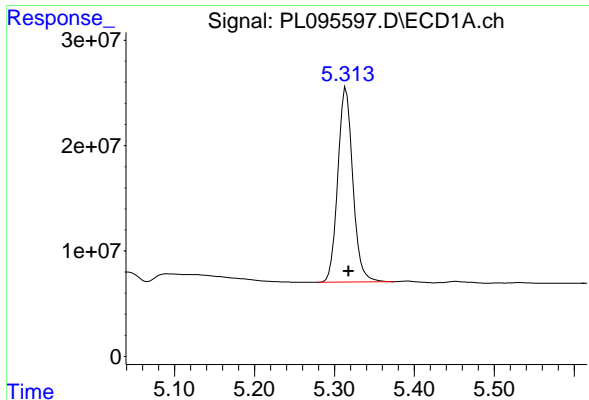
#4 Heptachlor

R.T.: 4.973 min
 Delta R.T.: -0.003 min
 Response: 236979746
 Conc: 51.80 ng/ml



#4 Heptachlor

R.T.: 4.108 min
 Delta R.T.: 0.003 min
 Response: 273240405
 Conc: 62.72 ng/ml



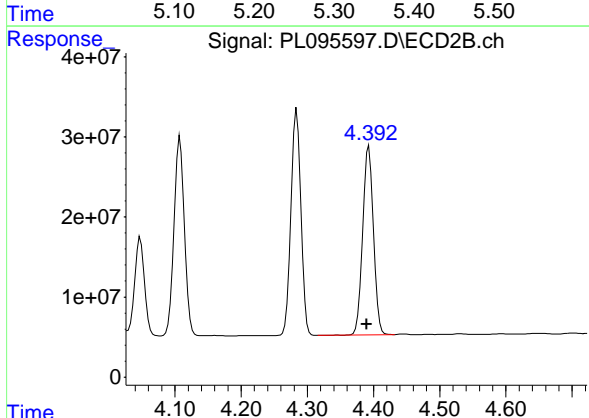
#5 Aldrin

R.T.: 5.315 min
 Delta R.T.: -0.003 min
 Response: 241253086
 Conc: 52.53 ng/ml

Instrument : ECD_L
 Client SampleId : MH-LLMSD

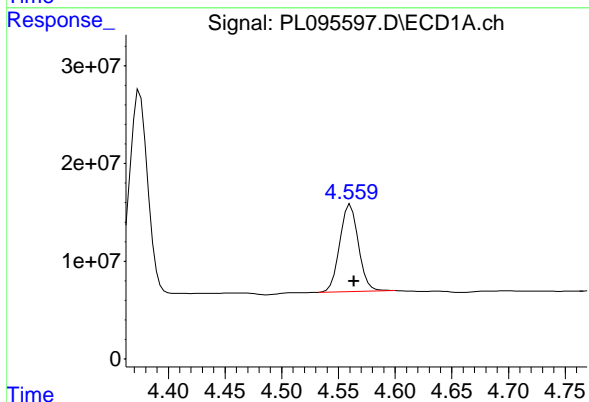
Manual Integrations
 APPROVED

Reviewed By :Abdul Mirza 05/09/2025
 Supervised By :mohammad ahmed 05/12/2025



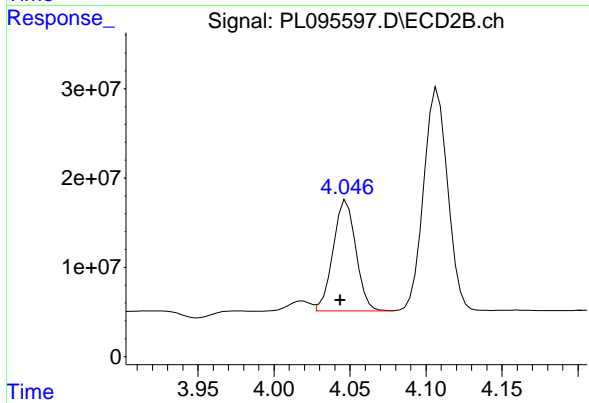
#5 Aldrin

R.T.: 4.393 min
 Delta R.T.: 0.003 min
 Response: 268878344
 Conc: 65.33 ng/ml



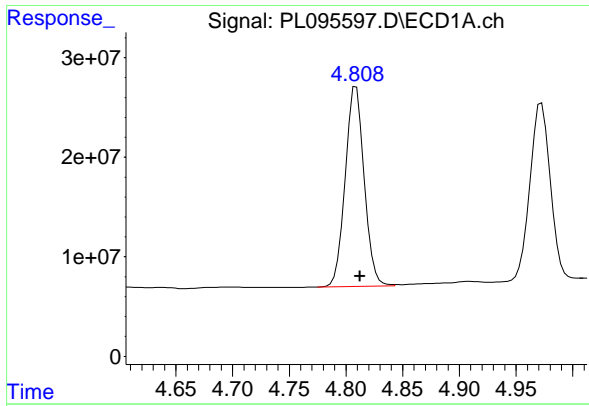
#6 beta-BHC

R.T.: 4.561 min
 Delta R.T.: -0.003 min
 Response: 102537267
 Conc: 49.59 ng/ml



#6 beta-BHC

R.T.: 4.048 min
 Delta R.T.: 0.004 min
 Response: 129255230
 Conc: 62.27 ng/ml



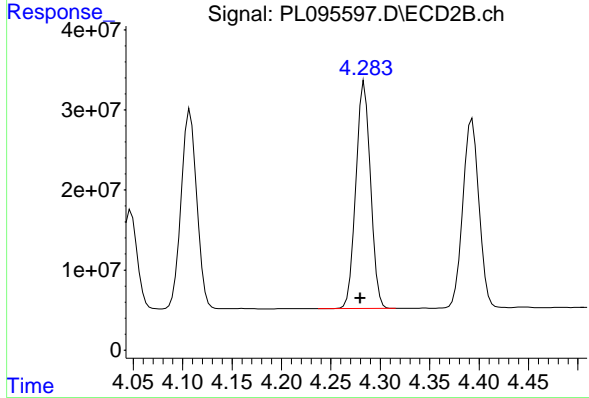
#7 delta-BHC

R.T.: 4.808 min
 Delta R.T.: -0.005 min
 Response: 233733870
 Conc: 50.26 ng/ml

Instrument : ECD_L
 Client SampleId : MH-LLMSD

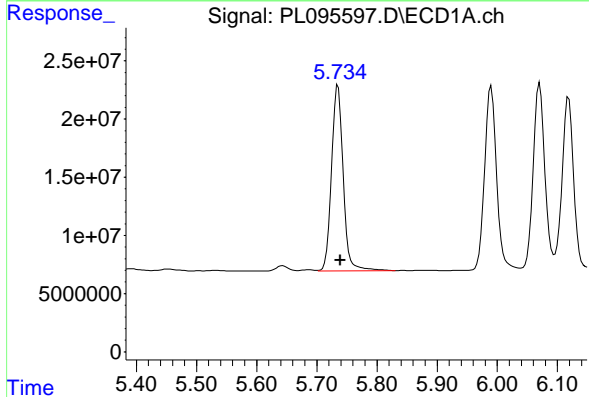
Manual Integrations
 APPROVED

Reviewed By :Abdul Mirza 05/09/2025
 Supervised By :mohammad ahmed 05/12/2025



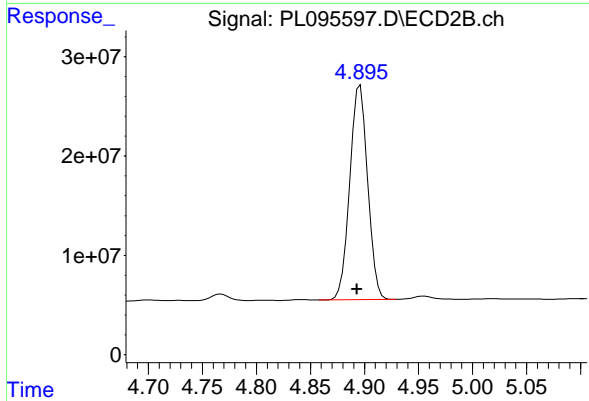
#7 delta-BHC

R.T.: 4.284 min
 Delta R.T.: 0.004 min
 Response: 292796160
 Conc: 66.82 ng/ml



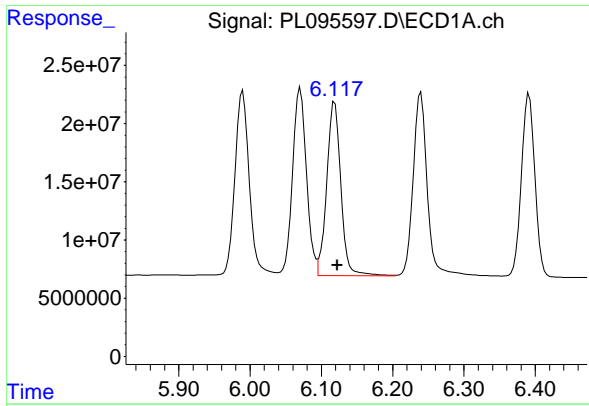
#8 Heptachlor epoxide

R.T.: 5.735 min
 Delta R.T.: -0.004 min
 Response: 215401686
 Conc: 53.78 ng/ml



#8 Heptachlor epoxide

R.T.: 4.896 min
 Delta R.T.: 0.003 min
 Response: 248778322
 Conc: 64.41 ng/ml



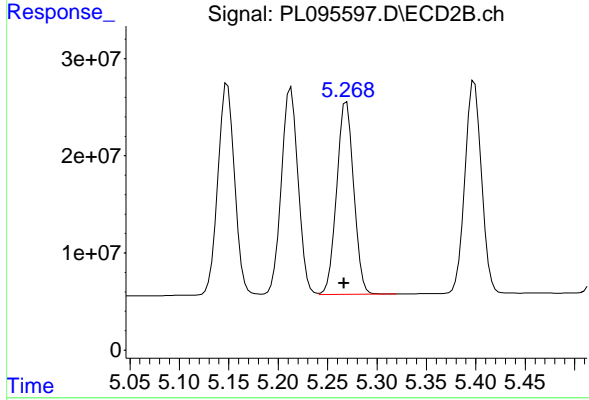
#9 Endosulfan I

R.T.: 6.119 min
 Delta R.T.: -0.004 min
 Response: 205523071
 Conc: 54.12 ng/ml

Instrument :
 ECD_L
 ClientSampleId :
 MH-LLMSD

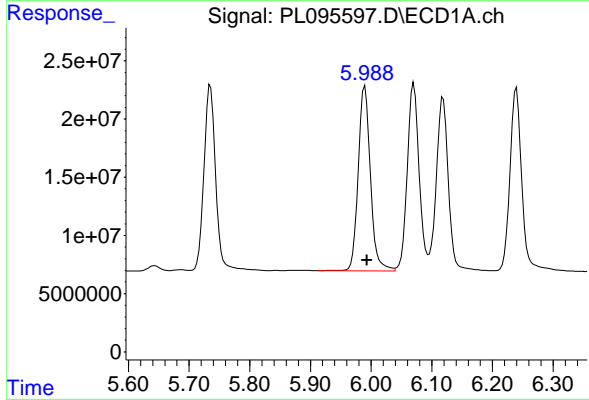
Manual Integrations
 APPROVED

Reviewed By :Abdul Mirza 05/09/2025
 Supervised By :mohammad ahmed 05/12/2025



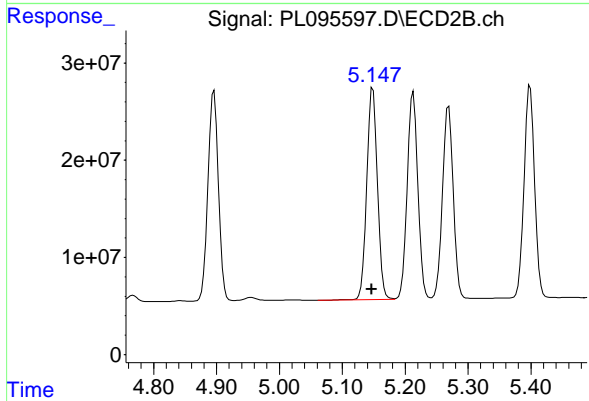
#9 Endosulfan I

R.T.: 5.269 min
 Delta R.T.: 0.003 min
 Response: 237252693
 Conc: 64.82 ng/ml



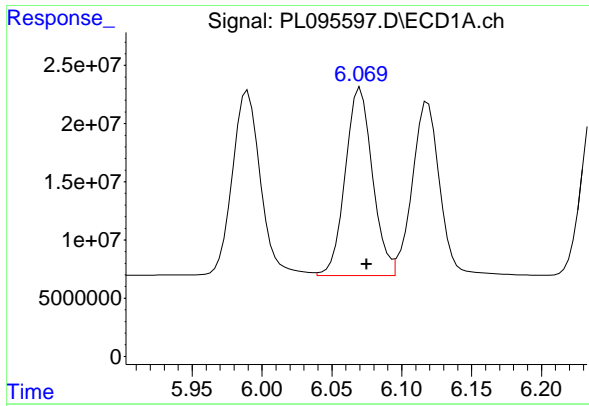
#10 gamma-Chlordane

R.T.: 5.990 min
 Delta R.T.: -0.004 min
 Response: 222866011
 Conc: 54.63 ng/ml



#10 gamma-Chlordane

R.T.: 5.149 min
 Delta R.T.: 0.002 min
 Response: 256740691
 Conc: 63.35 ng/ml



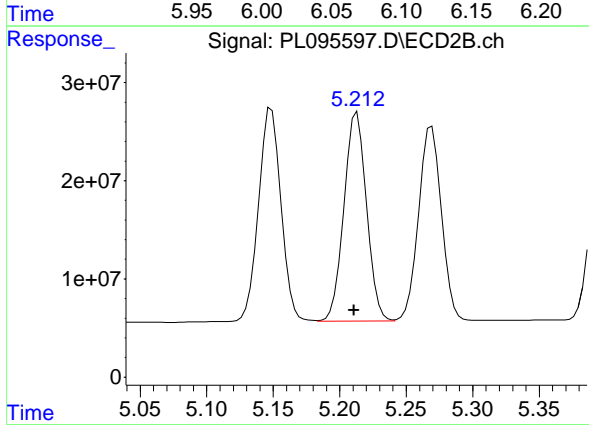
#11 alpha-Chlordane

R.T.: 6.071 min
 Delta R.T.: -0.004 min
 Response: 218974890
 Conc: 53.85 ng/ml

Instrument :
 ECD_L
 Client Sample Id :
 MH-LLMSD

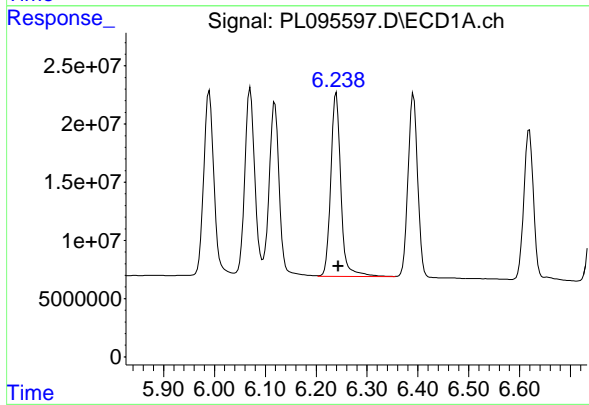
Manual Integrations
 APPROVED

Reviewed By :Abdul Mirza 05/09/2025
 Supervised By :mohammad ahmed 05/12/2025



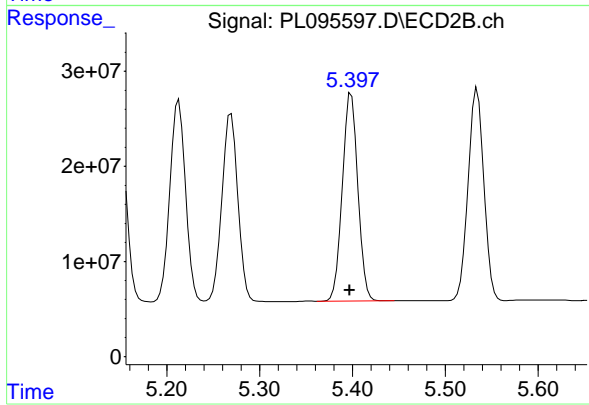
#11 alpha-Chlordane

R.T.: 5.213 min
 Delta R.T.: 0.002 min
 Response: 251488679
 Conc: 63.17 ng/ml



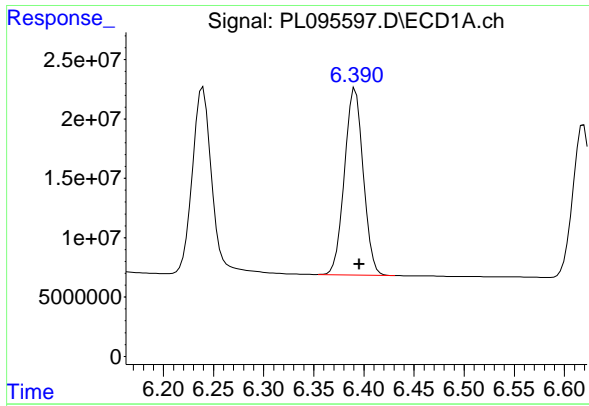
#12 4,4'-DDE

R.T.: 6.240 min
 Delta R.T.: -0.004 min
 Response: 216078059
 Conc: 55.11 ng/ml



#12 4,4'-DDE

R.T.: 5.399 min
 Delta R.T.: 0.002 min
 Response: 254232417
 Conc: 62.51 ng/ml



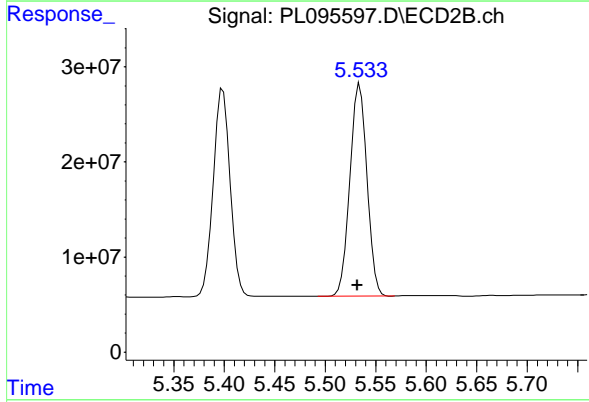
#13 Dieldrin

R.T.: 6.390 min
 Delta R.T.: -0.006 min
 Response: 205147122
 Conc: 53.22 ng/ml

Instrument : ECD_L
 Client Sample Id : MH-LLMSD

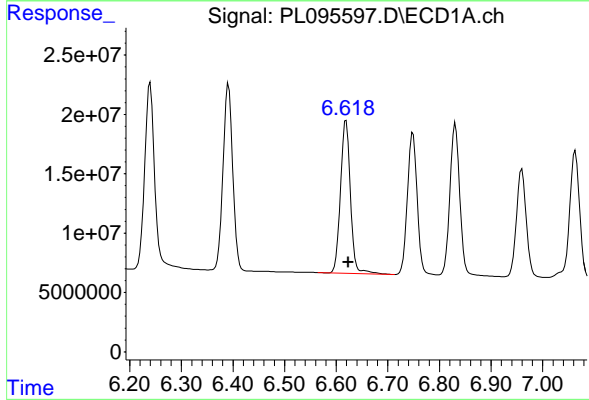
Manual Integrations
 APPROVED

Reviewed By :Abdul Mirza 05/09/2025
 Supervised By :mohammad ahmed 05/12/2025



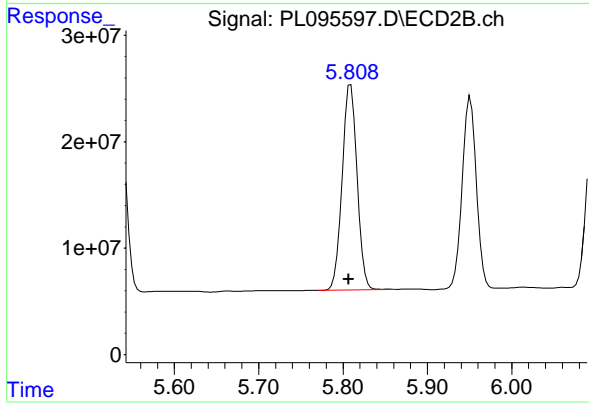
#13 Dieldrin

R.T.: 5.534 min
 Delta R.T.: 0.002 min
 Response: 263588251
 Conc: 64.81 ng/ml



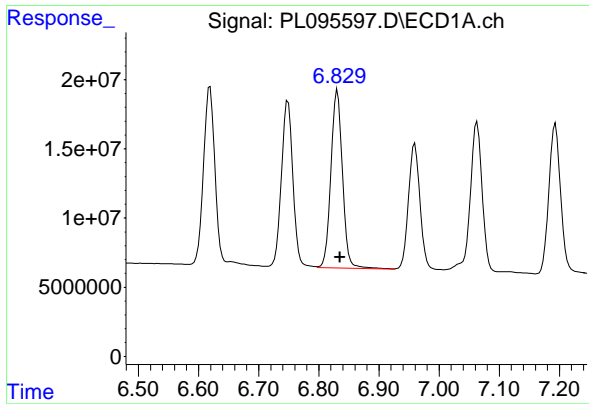
#14 Endrin

R.T.: 6.619 min
 Delta R.T.: -0.004 min
 Response: 172984108
 Conc: 54.32 ng/ml



#14 Endrin

R.T.: 5.809 min
 Delta R.T.: 0.002 min
 Response: 236485802
 Conc: 64.96 ng/ml



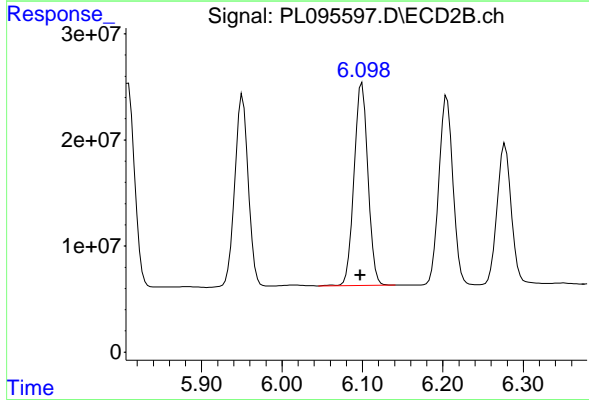
#15 Endosulfan II

R.T.: 6.831 min
 Delta R.T.: -0.004 min
 Response: 172524732
 Conc: 54.05 ng/ml

Instrument : ECD_L
 ClientSampleId : MH-LLMSD

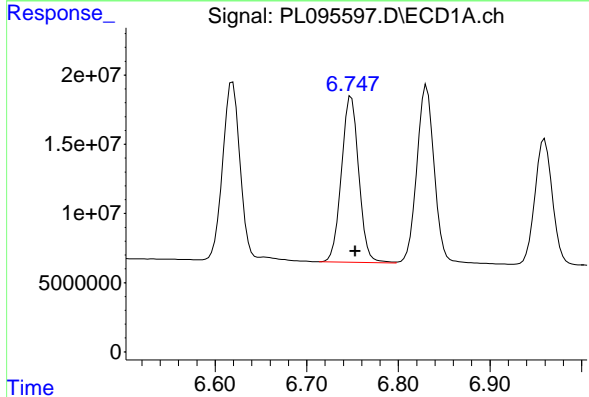
Manual Integrations
 APPROVED

Reviewed By :Abdul Mirza 05/09/2025
 Supervised By :mohammad ahmed 05/12/2025



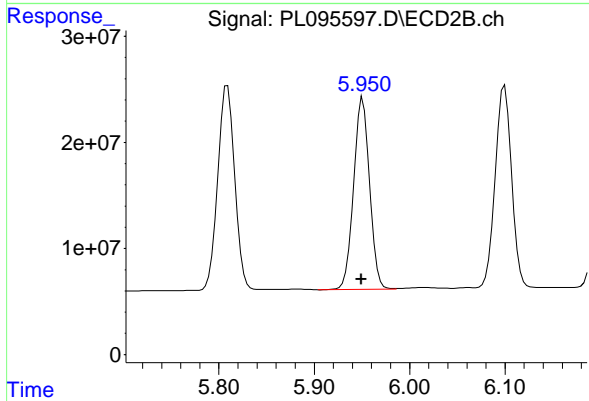
#15 Endosulfan II

R.T.: 6.100 min
 Delta R.T.: 0.002 min
 Response: 229813884
 Conc: 64.00 ng/ml



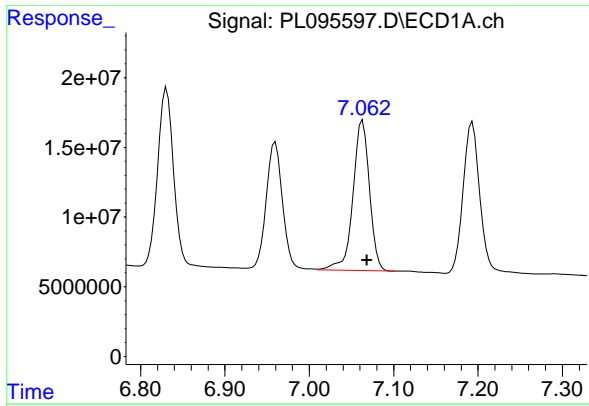
#16 4,4'-DDD

R.T.: 6.749 min
 Delta R.T.: -0.004 min
 Response: 158162797
 Conc: 55.87 ng/ml



#16 4,4'-DDD

R.T.: 5.951 min
 Delta R.T.: 0.002 min
 Response: 211896797
 Conc: 64.86 ng/ml



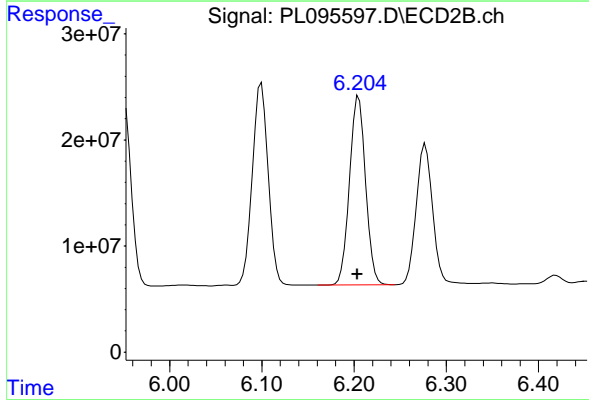
#17 4,4' -DDT

R.T.: 7.063 min
 Delta R.T.: -0.005 min
 Response: 147279010
 Conc: 51.70 ng/ml

Instrument :
 ECD_L
 ClientSampleId :
 MH-LLMSD

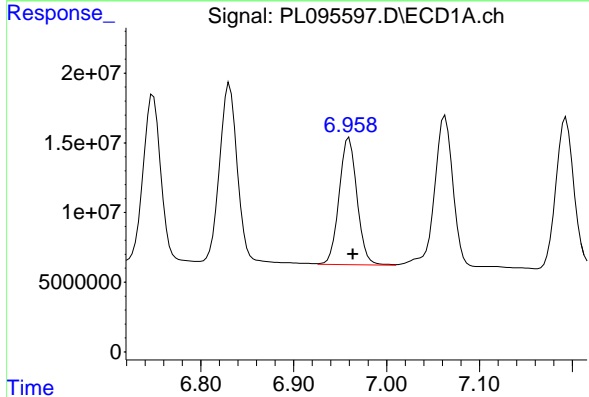
Manual Integrations
 APPROVED

Reviewed By :Abdul Mirza 05/09/2025
 Supervised By :mohammad ahmed 05/12/2025



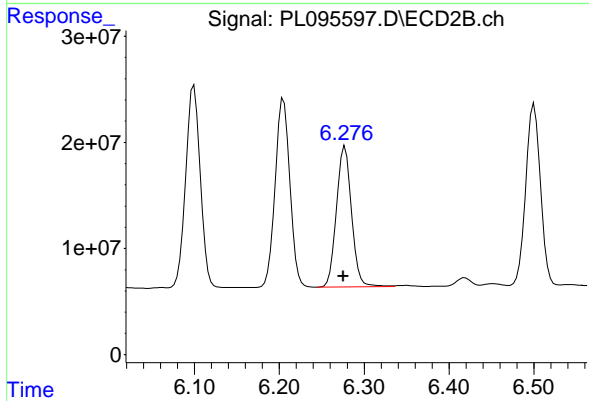
#17 4,4' -DDT

R.T.: 6.205 min
 Delta R.T.: 0.001 min
 Response: 214999204
 Conc: 62.57 ng/ml



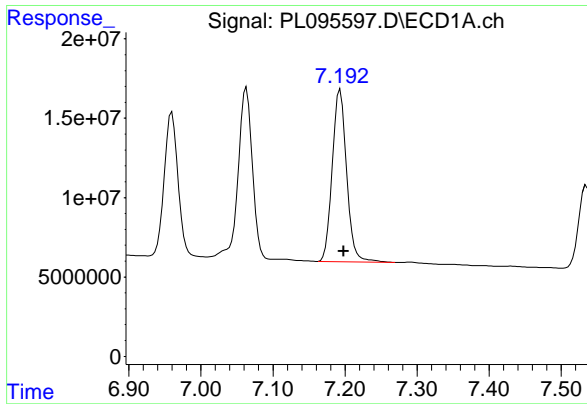
#18 Endrin aldehyde

R.T.: 6.960 min
 Delta R.T.: -0.004 min
 Response: 122154347
 Conc: 52.63 ng/ml



#18 Endrin aldehyde

R.T.: 6.277 min
 Delta R.T.: 0.002 min
 Response: 164371873
 Conc: 62.90 ng/ml



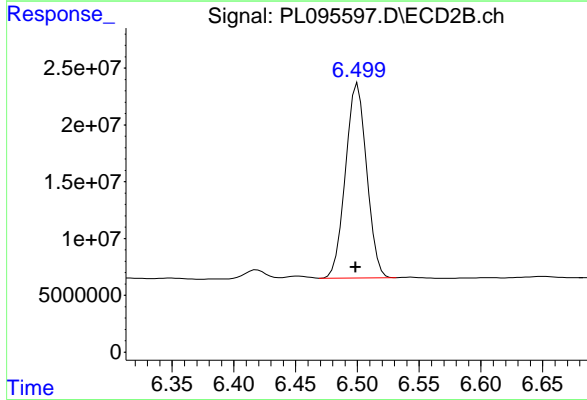
#19 Endosulfan Sulfate

R.T.: 7.193 min
 Delta R.T.: -0.005 min
 Response: 149565121
 Conc: 53.38 ng/ml

Instrument : ECD_L
 Client SampleId : MH-LLMSD

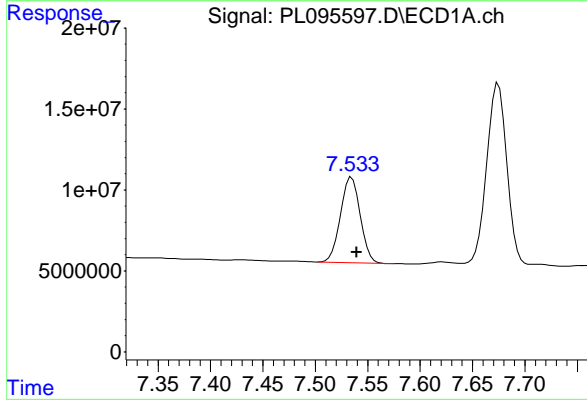
Manual Integrations
 APPROVED

Reviewed By :Abdul Mirza 05/09/2025
 Supervised By :mohammad ahmed 05/12/2025



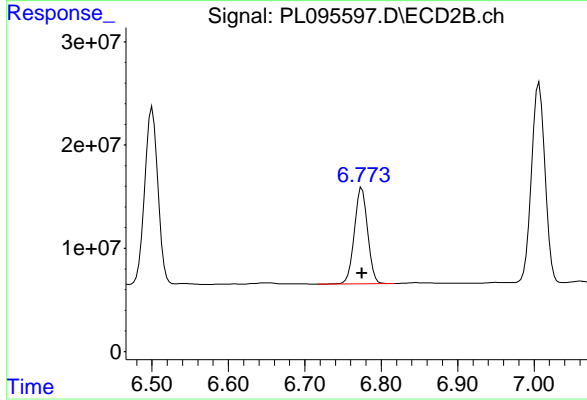
#19 Endosulfan Sulfate

R.T.: 6.499 min
 Delta R.T.: 0.000 min
 Response: 204760347
 Conc: 61.71 ng/ml m



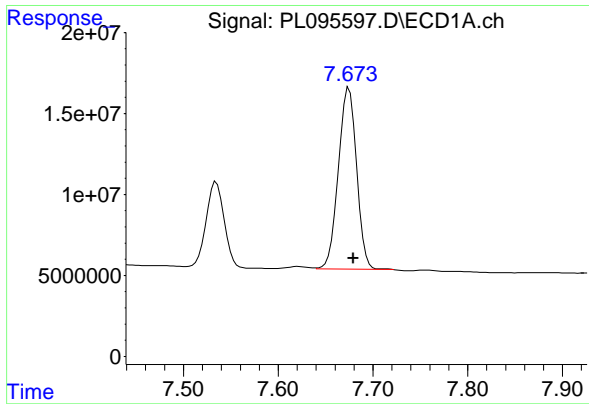
#20 Methoxychlor

R.T.: 7.535 min
 Delta R.T.: -0.005 min
 Response: 69097138
 Conc: 49.53 ng/ml



#20 Methoxychlor

R.T.: 6.775 min
 Delta R.T.: 0.000 min
 Response: 114082255
 Conc: 59.81 ng/ml



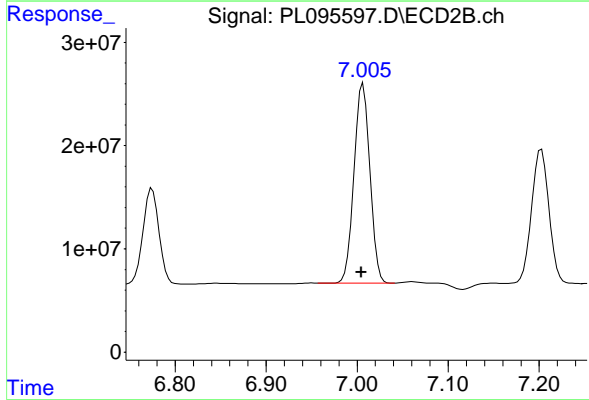
#21 Endrin ketone

R.T.: 7.675 min
 Delta R.T.: -0.005 min
 Response: 149352428
 Conc: 52.39 ng/ml

Instrument : ECD_L
 Client SampleId : MH-LLMSD

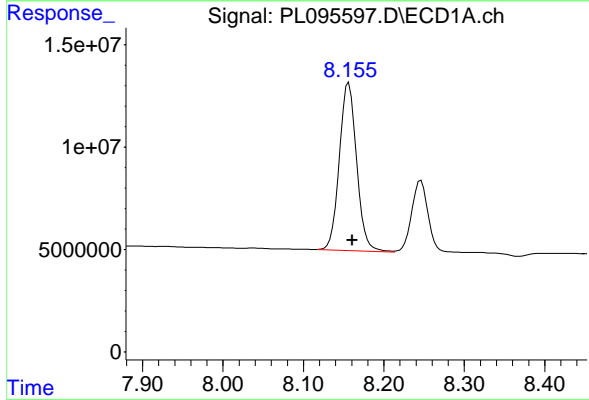
Manual Integrations
 APPROVED

Reviewed By :Abdul Mirza 05/09/2025
 Supervised By :mohammad ahmed 05/12/2025



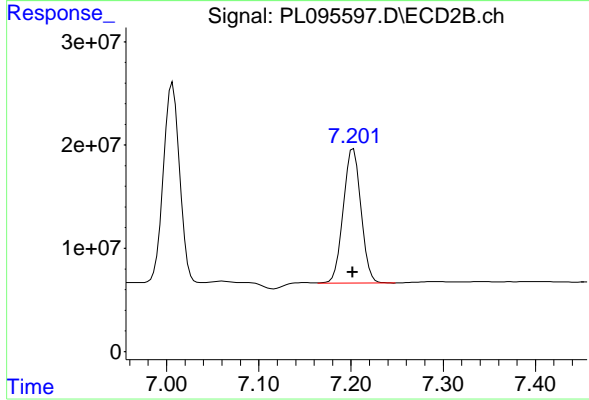
#21 Endrin ketone

R.T.: 7.007 min
 Delta R.T.: 0.002 min
 Response: 236041119
 Conc: 67.03 ng/ml



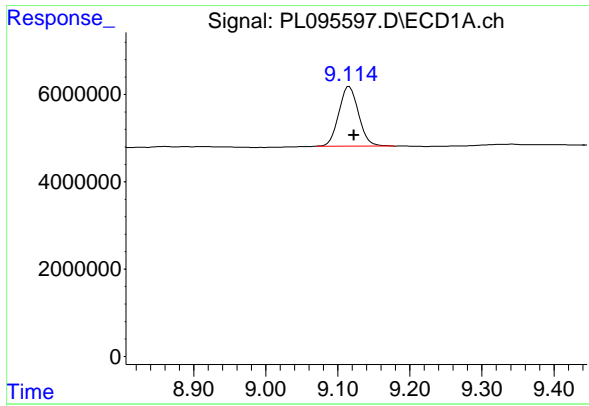
#22 Mirex

R.T.: 8.156 min
 Delta R.T.: -0.004 min
 Response: 122370357
 Conc: 51.50 ng/ml



#22 Mirex

R.T.: 7.201 min
 Delta R.T.: 0.000 min
 Response: 173000803
 Conc: 60.02 ng/ml m



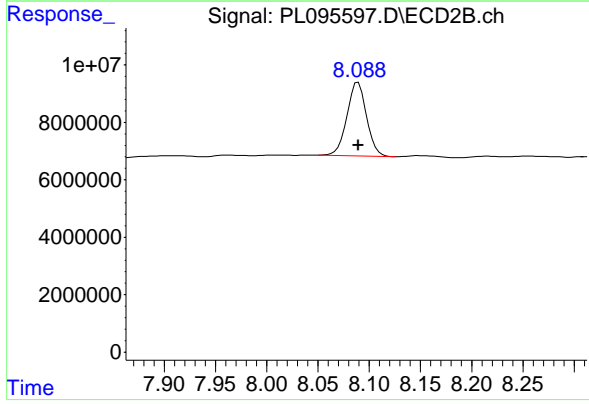
#28 Decachlorobiphenyl

R.T.: 9.116 min
 Delta R.T.: -0.007 min
 Response: 25950134
 Conc: 9.37 ng/ml

Instrument :
 ECD_L
 ClientSampleId :
 MH-LLMSD

Manual Integrations
 APPROVED

Reviewed By :Abdul Mirza 05/09/2025
 Supervised By :mohammad ahmed 05/12/2025



#28 Decachlorobiphenyl

R.T.: 8.089 min
 Delta R.T.: 0.000 min
 Response: 34106238
 Conc: 11.53 ng/ml