

Data Path : Z:\pestpcbsrv\HPCHEM1\ECD\_L\Data\PL050919\  
 Data File : PL048312.D  
 Signal(s) : Signal #1: ECD1A.ch Signal #2: ECD2B.ch  
 Acq On : 09 May 2019 12:42  
 Operator : AJ\SJ  
 Sample : INDB501  
 Misc :  
 ALS Vial : 14 Sample Multiplier: 1

Instrument :  
 ECD\_L  
 ClientSampleId :  
 INDB501

Integration File signal 1: autoint1.e  
 Integration File signal 2: autoint2.e  
 Quant Time: May 09 12:55:14 2019  
 Quant Method : Z:\pestpcbsrv\HPCHEM1\ECD\_L\methods\PL050919CLP.M  
 Quant Title : GC Extractables  
 QLast Update : Thu May 09 12:53:48 2019  
 Response via : Initial Calibration  
 Integrator: ChemStation

Volume Inj. : 1 µl  
 Signal #1 Phase : ZB-MR2 Signal #2 Phase: ZB-MR1  
 Signal #1 Info : 30M x 0.32mm x0.2 Signal #2 Info : 30M x 0.32mm x 0.50µm

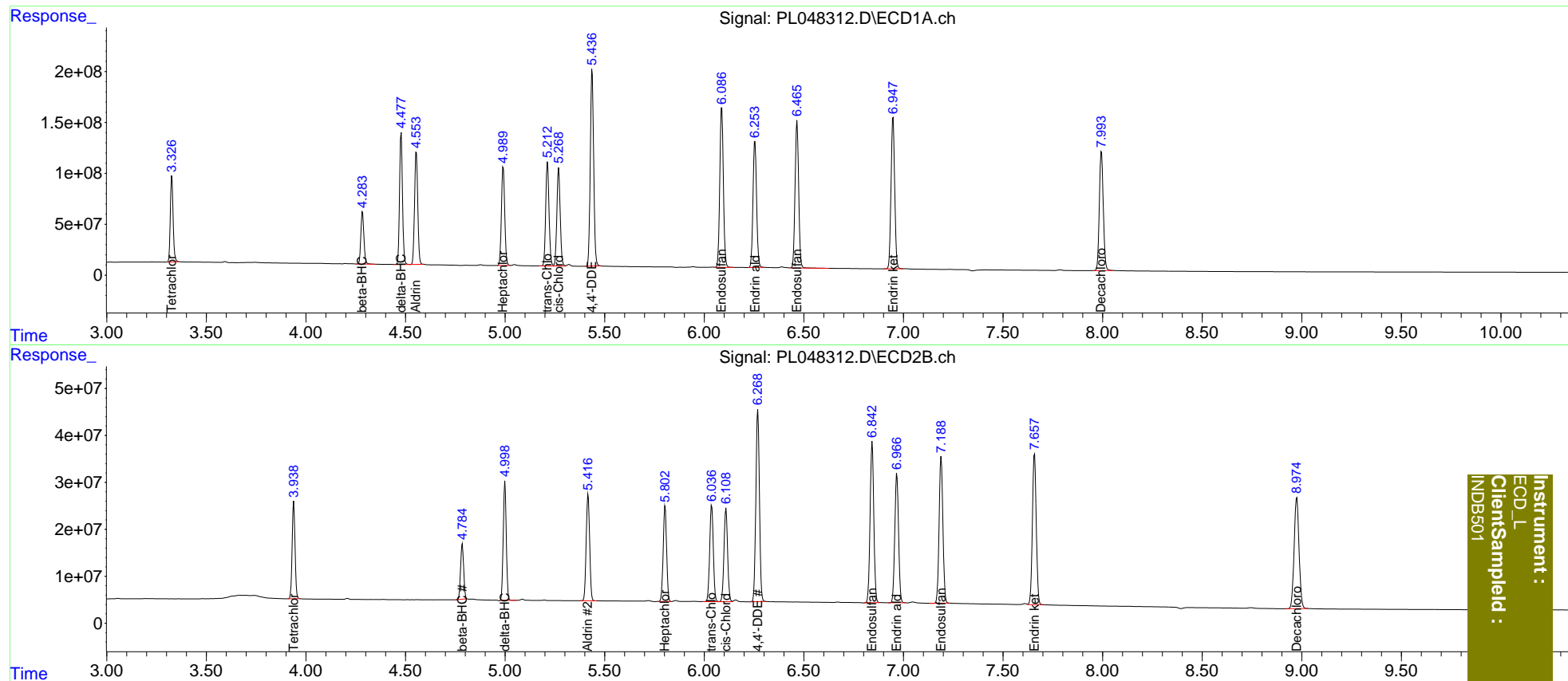
	Compound	RT#1	RT#2	Resp#1	Resp#2	ng/ml	ng/ml
-----							
System Monitoring Compounds							
1)	SA Tetrachlo...	3.327	3.939	817.8E6	209.1E6	77.675	78.809
27)	SA Decachlor...	7.994	8.975	1605.4E6	405.9E6	148.746	144.885
Target Compounds							
5)	MB Aldrin	4.555	5.417	1223.3E6	271.5E6	81.365	82.496
6)	B beta-BHC	4.284	4.785	540.6E6	126.2E6	77.861	78.096
7)	B delta-BHC	4.479	5.000	1314.6E6	269.0E6	82.581	95.115
8)	B Heptachlo...	4.991	5.804	1110.9E6	243.2E6	81.456	83.615
10)	B trans-Chl...	5.213	6.037	1173.9E6	259.0E6	80.905	80.429
11)	B cis-Chlor...	5.269	6.109	1127.7E6	251.2E6	80.374	79.954
12)	B 4,4'-DDE	5.437	6.269	2277.1E6	509.0E6	164.105	165.892
15)	B Endosulfa...	6.088	6.843	1964.1E6	441.3E6	153.429	157.208
18)	B Endrin al...	6.255	6.967	1564.3E6	359.6E6	154.203	154.891
19)	B Endosulfa...	6.466	7.190	1795.7E6	410.5E6	154.077	154.995
21)	B Endrin ke...	6.948	7.658	1908.9E6	430.8E6	159.221	160.976

(f)=RT Delta > 1/2 Window (#)=Amounts differ by > 25% (m)=manual int.

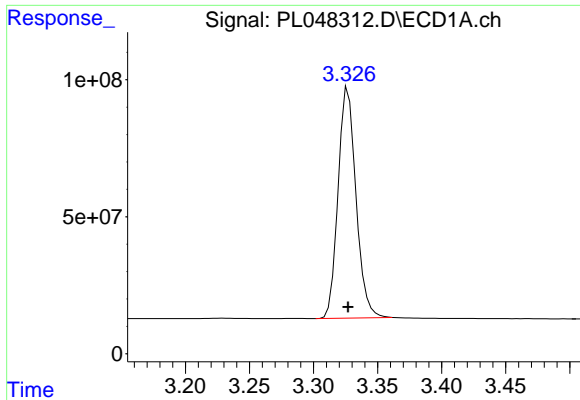
Data Path : Z:\pestpcbsrv\HPCHEM1\ECD\_L\Data\PL050919\  
 Data File : PL048312.D  
 Signal(s) : Signal #1: ECD1A.ch Signal #2: ECD2B.ch  
 Acq On : 09 May 2019 12:42  
 Operator : AJ\SJ  
 Sample : INDB501  
 Misc :  
 ALS Vial : 14 Sample Multiplier: 1

Integration File signal 1: autoint1.e  
 Integration File signal 2: autoint2.e  
 Quant Time: May 09 12:55:14 2019  
 Quant Method : Z:\pestpcbsrv\HPCHEM1\ECD\_L\methods\PL050919CLP.M  
 Quant Title : GC Extractables  
 QLast Update : Thu May 09 12:53:48 2019  
 Response via : Initial Calibration  
 Integrator: ChemStation

Volume Inj. : 1 µl  
 Signal #1 Phase : ZB-MR2 Signal #2 Phase: ZB-MR1  
 Signal #1 Info : 30M x 0.32mm x0.2 Signal #2 Info : 30M x 0.32mm x 0.50µm



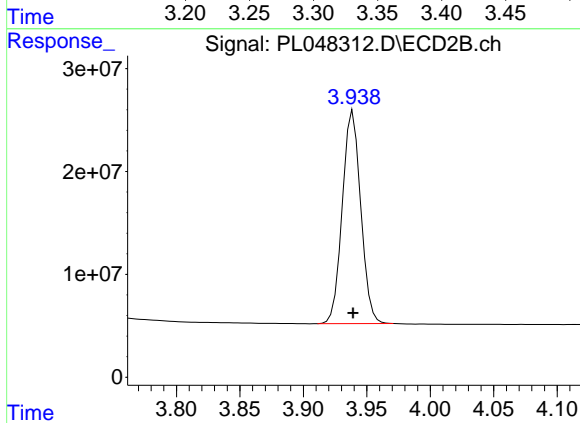
Instrument :  
 ECD\_L  
 ClientSampleId :  
 INDB501



#1 Tetrachloro-m-xylene

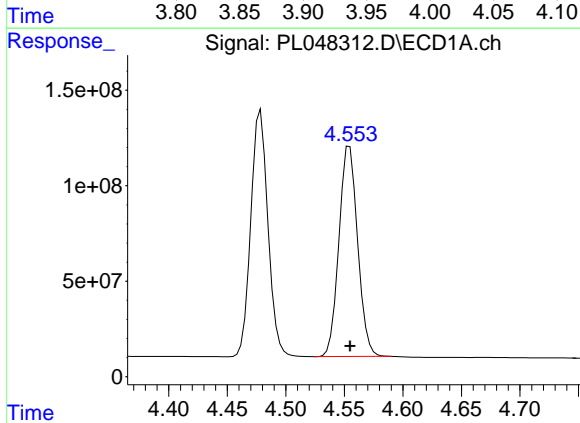
R.T.: 3.327 min  
Delta R.T.: 0.000 min  
Response: 817799486  
Conc: 77.68 ng/ml

Instrument :  
ECD\_L  
ClientSampled :  
INDB501



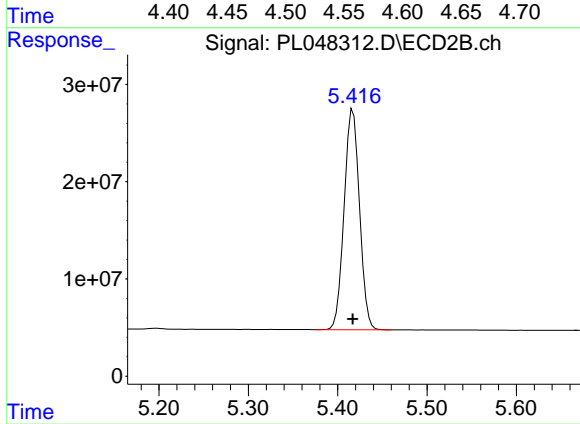
#1 Tetrachloro-m-xylene

R.T.: 3.939 min  
Delta R.T.: 0.000 min  
Response: 209087875  
Conc: 78.81 ng/ml



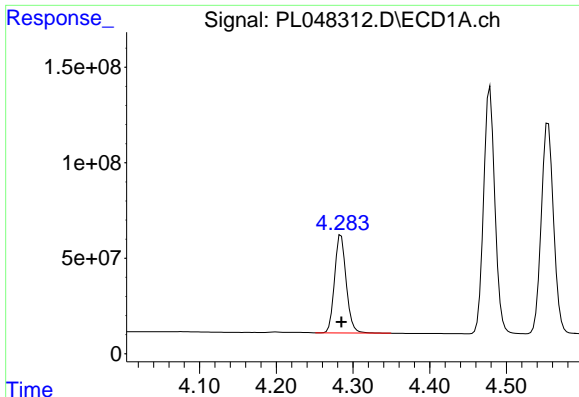
#5 Aldrin

R.T.: 4.555 min  
Delta R.T.: 0.000 min  
Response: 1223262721  
Conc: 81.36 ng/ml



#5 Aldrin

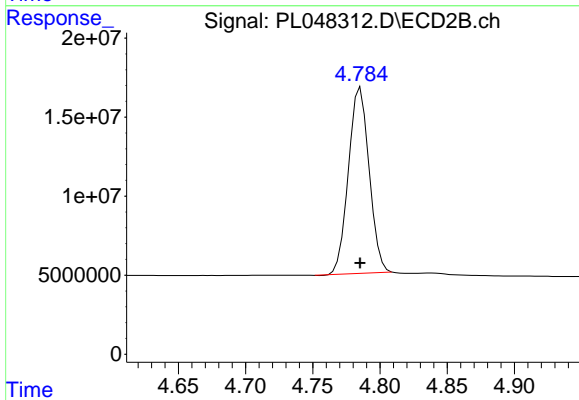
R.T.: 5.417 min  
Delta R.T.: 0.000 min  
Response: 271485071  
Conc: 82.50 ng/ml



#6 beta-BHC

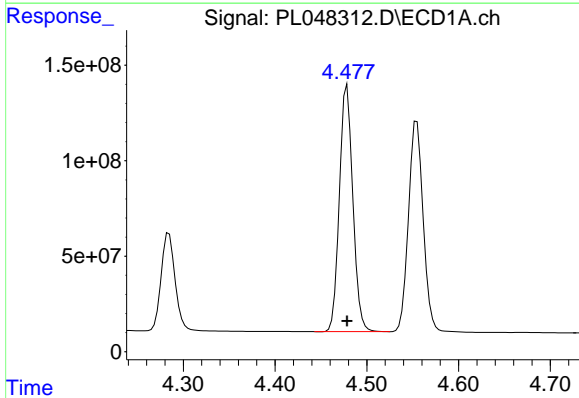
R.T.: 4.284 min  
Delta R.T.: 0.000 min  
Response: 540601559  
Conc: 77.86 ng/ml

Instrument :  
ECD\_L  
ClientSampleId :  
INDB501



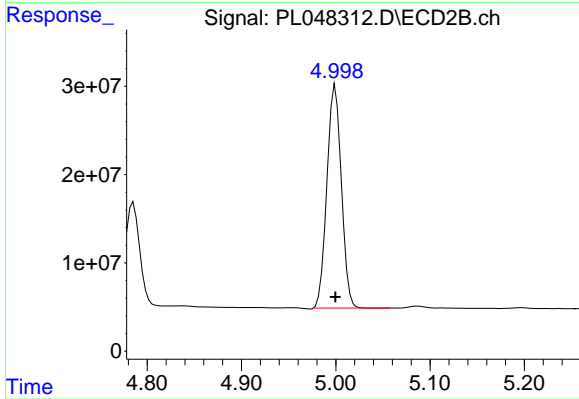
#6 beta-BHC

R.T.: 4.785 min  
Delta R.T.: 0.000 min  
Response: 126205299  
Conc: 78.10 ng/ml



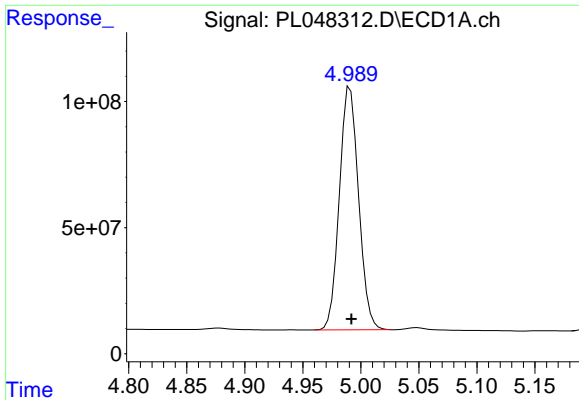
#7 delta-BHC

R.T.: 4.479 min  
Delta R.T.: 0.000 min  
Response: 1314596737  
Conc: 82.58 ng/ml



#7 delta-BHC

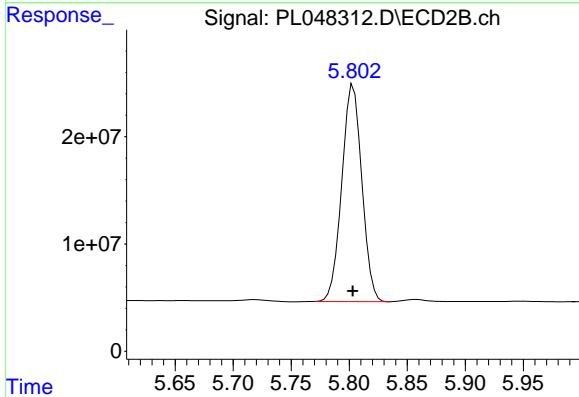
R.T.: 5.000 min  
Delta R.T.: 0.000 min  
Response: 268952936  
Conc: 95.11 ng/ml



#8 Heptachlor epoxide

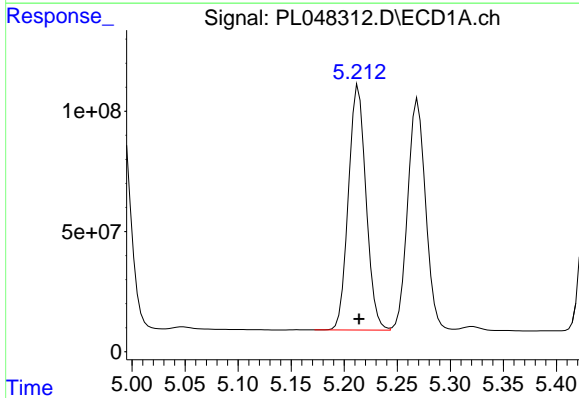
R.T.: 4.991 min  
 Delta R.T.: 0.000 min  
 Response: 1110925980  
 Conc: 81.46 ng/ml

Instrument :  
 ECD\_L  
 ClientSampled :  
 INDB501



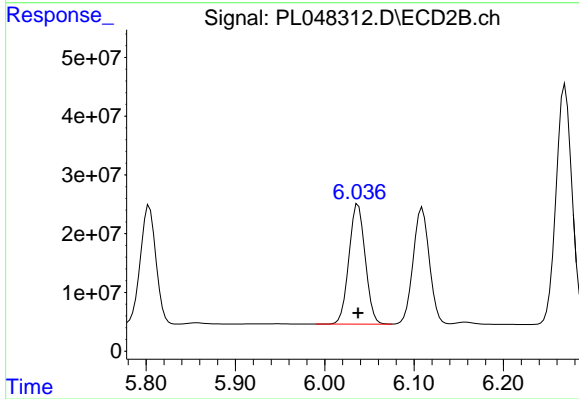
#8 Heptachlor epoxide

R.T.: 5.804 min  
 Delta R.T.: 0.000 min  
 Response: 243208572  
 Conc: 83.62 ng/ml



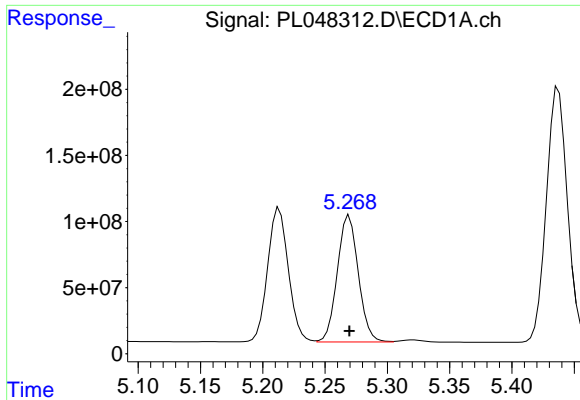
#10 trans-Chlordane

R.T.: 5.213 min  
 Delta R.T.: 0.000 min  
 Response: 1173881102  
 Conc: 80.91 ng/ml



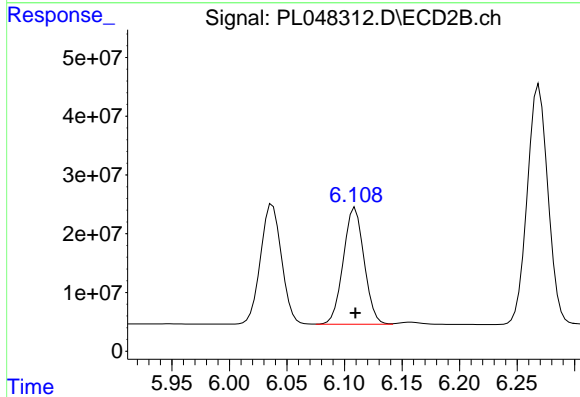
#10 trans-Chlordane

R.T.: 6.037 min  
 Delta R.T.: 0.000 min  
 Response: 259006114  
 Conc: 80.43 ng/ml

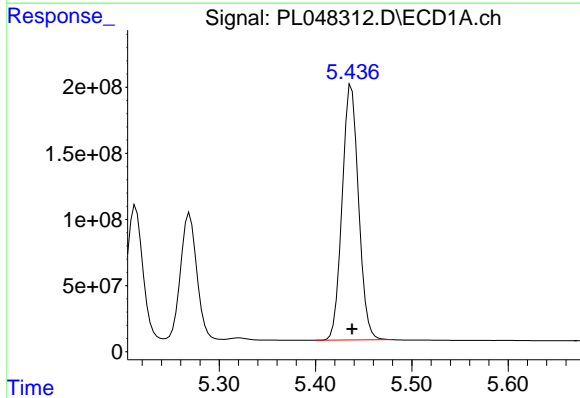


#11 cis-Chlordane  
 R.T.: 5.269 min  
 Delta R.T.: 0.000 min  
 Response: 1127686634  
 Conc: 80.37 ng/ml

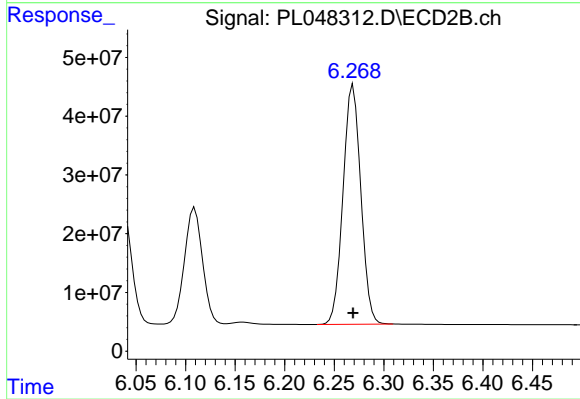
Instrument :  
 ECD\_L  
 ClientSampled :  
 INDB501



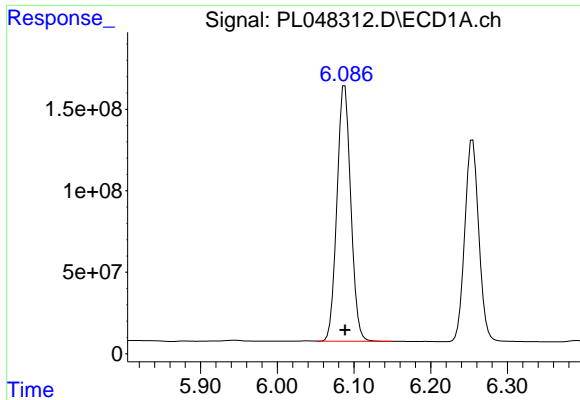
#11 cis-Chlordane  
 R.T.: 6.109 min  
 Delta R.T.: 0.000 min  
 Response: 251181183  
 Conc: 79.95 ng/ml



#12 4,4'-DDE  
 R.T.: 5.437 min  
 Delta R.T.: 0.000 min  
 Response: 2277105877  
 Conc: 164.10 ng/ml



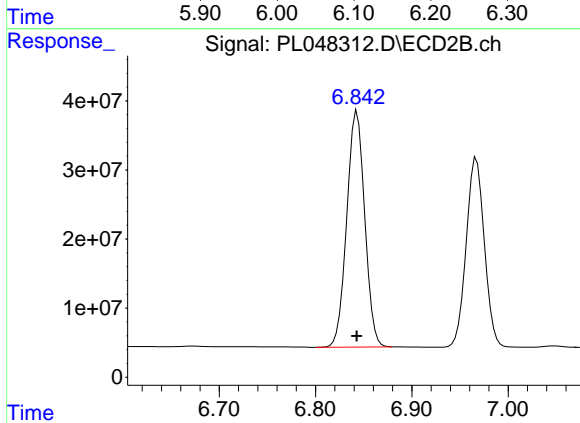
#12 4,4'-DDE  
 R.T.: 6.269 min  
 Delta R.T.: 0.000 min  
 Response: 509016006  
 Conc: 165.89 ng/ml



#15 Endosulfan II

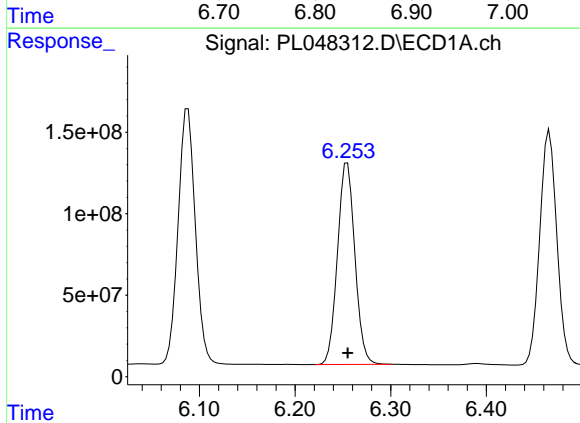
R.T.: 6.088 min  
Delta R.T.: 0.000 min  
Response: 1964051777  
Conc: 153.43 ng/ml

Instrument :  
ECD\_L  
ClientSampled :  
INDB501



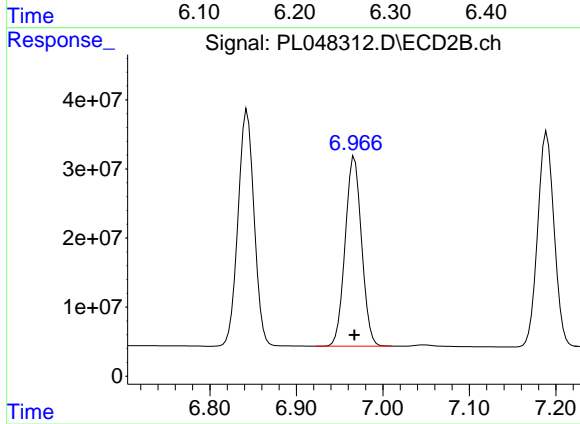
#15 Endosulfan II

R.T.: 6.843 min  
Delta R.T.: 0.000 min  
Response: 441295857  
Conc: 157.21 ng/ml



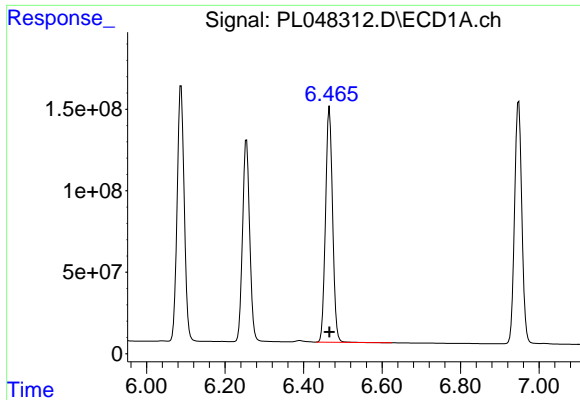
#18 Endrin aldehyde

R.T.: 6.255 min  
Delta R.T.: 0.000 min  
Response: 1564333586  
Conc: 154.20 ng/ml



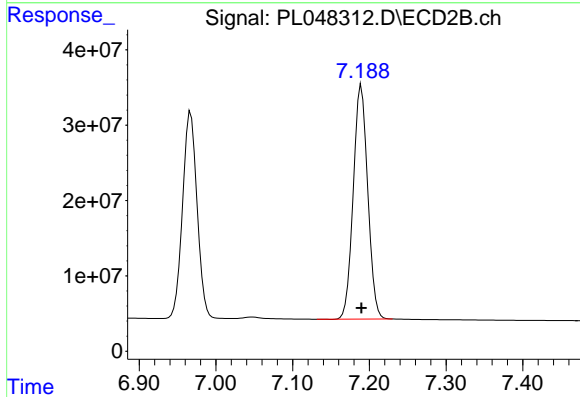
#18 Endrin aldehyde

R.T.: 6.967 min  
Delta R.T.: 0.000 min  
Response: 359572813  
Conc: 154.89 ng/ml

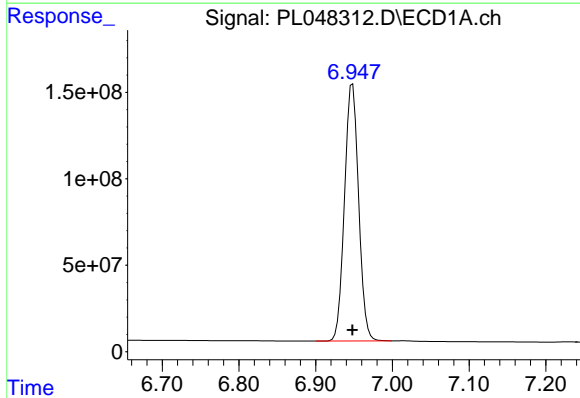


#19 Endosulfan Sulfate  
 R.T.: 6.466 min  
 Delta R.T.: 0.000 min  
 Response: 1795721514  
 Conc: 154.08 ng/ml

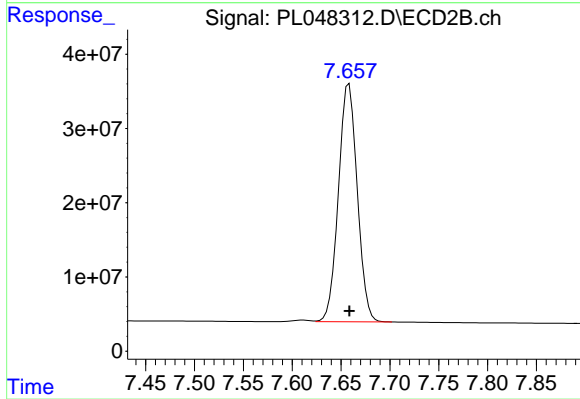
Instrument :  
 ECD\_L  
 ClientSampled :  
 INDB501



#19 Endosulfan Sulfate  
 R.T.: 7.190 min  
 Delta R.T.: 0.000 min  
 Response: 410481230  
 Conc: 155.00 ng/ml

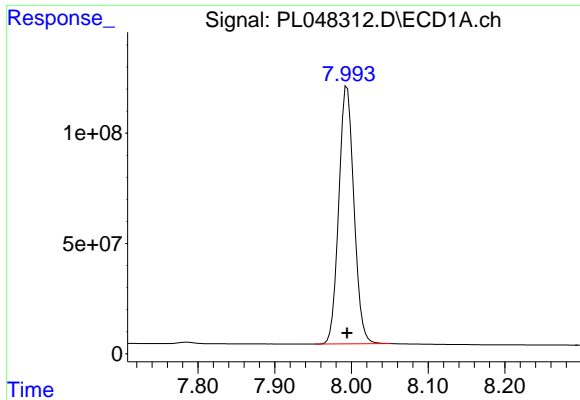


#21 Endrin ketone  
 R.T.: 6.948 min  
 Delta R.T.: 0.000 min  
 Response: 1908862960  
 Conc: 159.22 ng/ml



#21 Endrin ketone  
 R.T.: 7.658 min  
 Delta R.T.: 0.000 min  
 Response: 430830864  
 Conc: 160.98 ng/ml





#27 Decachlorobiphenyl

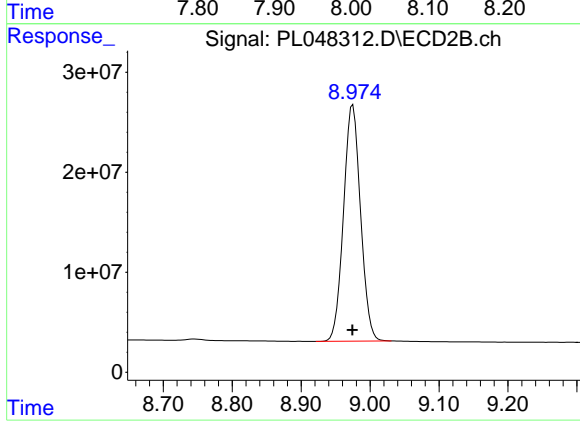
R.T.: 7.994 min

Delta R.T.: 0.000 min

Response: 1605381436

Conc: 148.75 ng/ml

Instrument :  
ECD\_L  
ClientSampleId :  
INDB501



#27 Decachlorobiphenyl

R.T.: 8.975 min

Delta R.T.: 0.000 min

Response: 405918209

Conc: 144.88 ng/ml