

Data Path : Z:\pestpcbsrv\HPCHEM1\ECD_L\Data\PL050919\
 Data File : PL048317.D
 Signal(s) : Signal #1: ECD1A.ch Signal #2: ECD2B.ch
 Acq On : 09 May 2019 14:14
 Operator : AJ\SJ
 Sample : K2607-02
 Misc :
 ALS Vial : 7 Sample Multiplier: 1

Instrument :
 ECD_L
 ClientSampled :
 A5122

Integration File signal 1: autoint1.e
 Integration File signal 2: autoint2.e
 Quant Time: May 10 01:41:42 2019
 Quant Method : Z:\pestpcbsrv\HPCHEM1\ECD_L\methods\PL050919CLP.M
 Quant Title : GC Extractables
 QLast Update : Fri May 10 01:24:11 2019
 Response via : Initial Calibration
 Integrator: ChemStation

Volume Inj. : 1 µl
 Signal #1 Phase : ZB-MR2 Signal #2 Phase: ZB-MR1
 Signal #1 Info : 30M x 0.32mm x0.2 Signal #2 Info : 30M x 0.32mm x 0.50µm

Compound	RT#1	RT#2	Resp#1	Resp#2	ng/ml	ng/ml

System Monitoring Compounds						
1) SA Tetrachlo...	3.329	3.940	189.2E6	47377302	18.248	17.971
27) SA Decachlor...	7.996	8.977	361.0E6	93900456	33.876	34.444
Target Compounds						
2) A alpha-BHC	3.757	4.328	425.2E6	92841986	26.414	25.591
3) MA gamma-BHC...	4.032	4.612	409.3E6	90986667	27.693	26.597
4) MA Heptachlor	4.317	5.115	619.5E6	143.1E6	39.535	39.310
5) MB Aldrin	4.556	5.418	955.1E6	226.4E6	64.097	68.644
6) B beta-BHC	4.317f	0.000	619.5E6	0	89.777	N.D. #
7) B delta-BHC	4.480	5.001	1018.6E6	193.3E6	64.699	66.823
9) A Endosulfan I	5.338	6.110f	14096123	211.6E6	1.070	69.816 #
10) B trans-Chl...	5.271f	0.000	929.6E6	0	64.369	N.D. #
11) B cis-Chlor...	5.271	6.110	929.6E6	211.6E6	66.494	66.268
12) B 4,4'-DDE	5.440	6.270	903.0E6	212.5E6	64.118	69.081
13) MA Dieldrin	5.562	6.416	677.7E6	147.7E6	47.392	46.896
15) B Endosulfa...	6.109	6.861	13416731	7112676	1.071	2.526 #
17) MA 4,4'-DDT	6.184	7.056	621.6E6	142.4E6	55.791	56.642
19) B Endosulfa...	6.468	7.191	1068.3E6	252.9E6	93.228	95.450
21) B Endrin ke...	6.950	7.659	444.2E6	101.1E6	37.773	38.340
22) Toxaphene-1	5.562	6.270	677.7E6	212.5E6	9724.651	13967.915 #
24) Toxaphene-3	6.109	7.056	13416731	142.4E6	68.862	6046.752 #
25) Toxaphene-4	6.338	7.225	132.3E6	30584732	678.357	1528.162 #

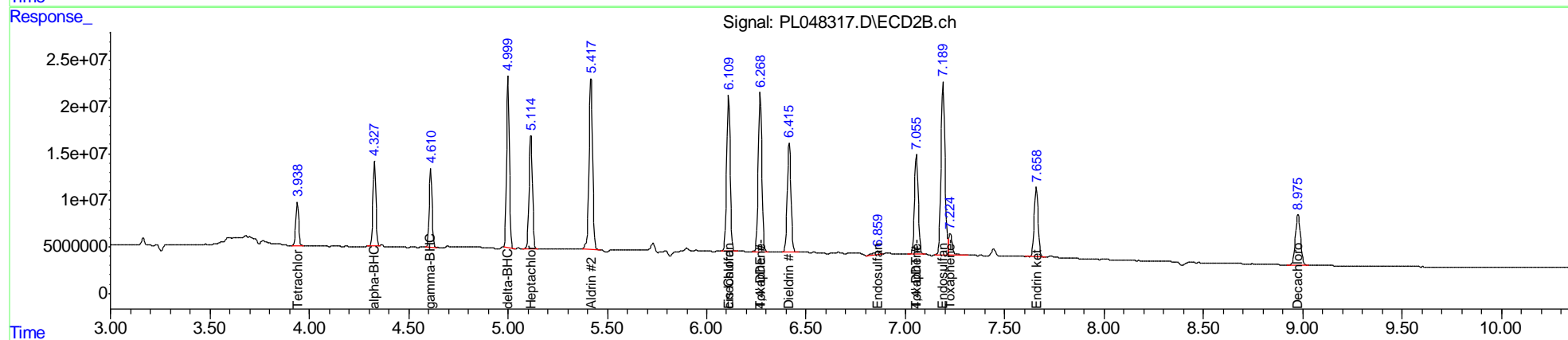
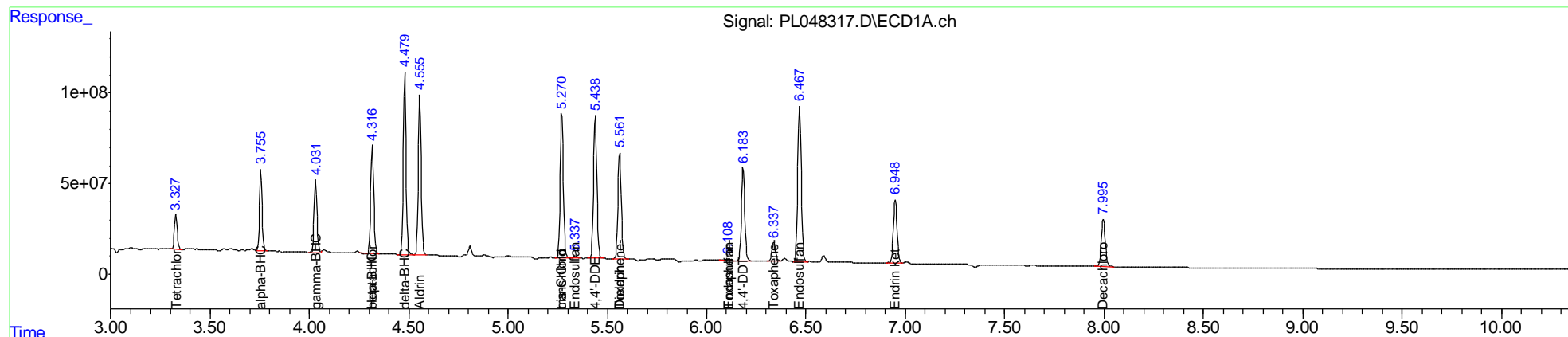
(f)=RT Delta > 1/2 Window (#)=Amounts differ by > 25% (m)=manual int.

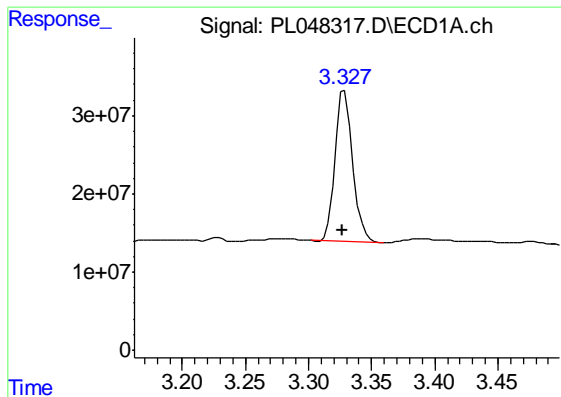
Data Path : Z:\pestpcbsrv\HPCHEM1\ECD_L\Data\PL050919\
 Data File : PL048317.D
 Signal(s) : Signal #1: ECD1A.ch Signal #2: ECD2B.ch
 Acq On : 09 May 2019 14:14
 Operator : AJ\SJ
 Sample : K2607-02
 Misc :
 ALS Vial : 7 Sample Multiplier: 1

Instrument :
 ECD_L
 Client Sampled :
 A5122

Integration File signal 1: autoint1.e
 Integration File signal 2: autoint2.e
 Quant Time: May 10 01:41:42 2019
 Quant Method : Z:\pestpcbsrv\HPCHEM1\ECD_L\methods\PL050919CLP.M
 Quant Title : GC Extractables
 QLast Update : Fri May 10 01:24:11 2019
 Response via : Initial Calibration
 Integrator: ChemStation

Volume Inj. : 1 µl
 Signal #1 Phase : ZB-MR2 Signal #2 Phase: ZB-MR1
 Signal #1 Info : 30M x 0.32mm x0.2 Signal #2 Info : 30M x 0.32mm x 0.50µm

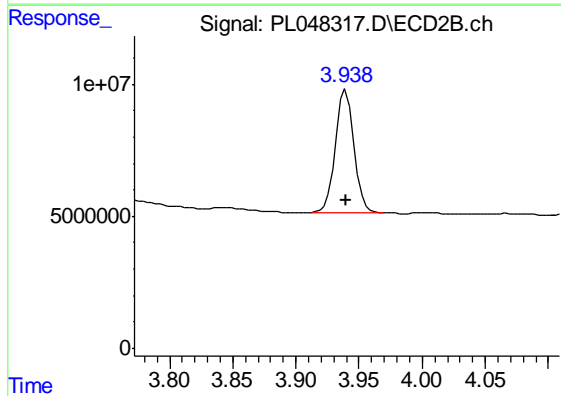




#1 Tetrachloro-m-xylene

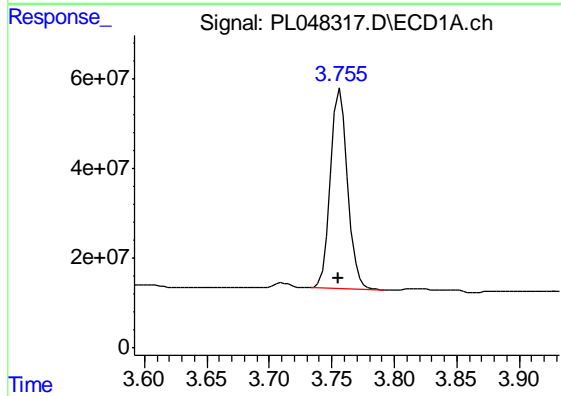
R.T.: 3.329 min
 Delta R.T.: 0.002 min
 Response: 189193401
 Conc: 18.25 ng/ml

Instrument :
 ECD_L
 ClientSampleId :
 A5122



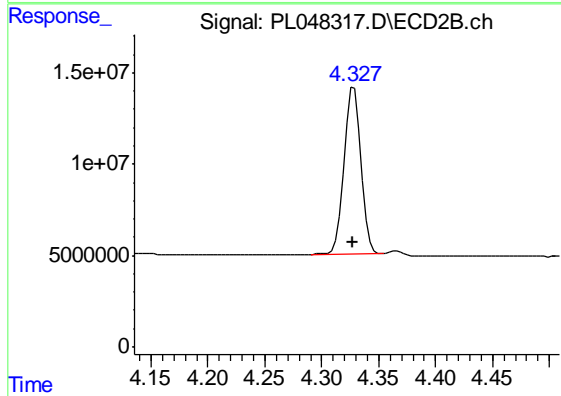
#1 Tetrachloro-m-xylene

R.T.: 3.940 min
 Delta R.T.: 0.000 min
 Response: 47377302
 Conc: 17.97 ng/ml



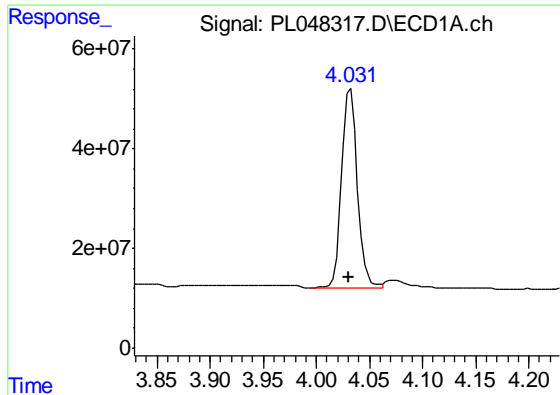
#2 alpha-BHC

R.T.: 3.757 min
 Delta R.T.: 0.002 min
 Response: 425201827
 Conc: 26.41 ng/ml



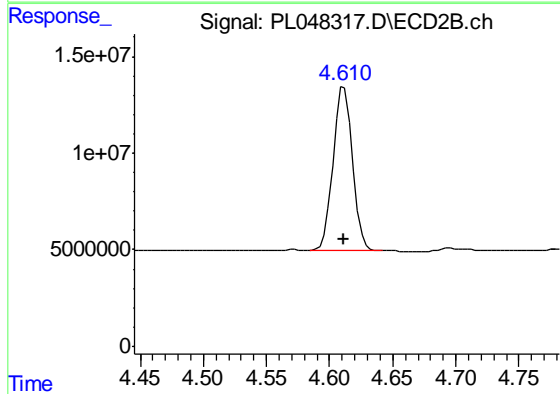
#2 alpha-BHC

R.T.: 4.328 min
 Delta R.T.: 0.000 min
 Response: 92841986
 Conc: 25.59 ng/ml

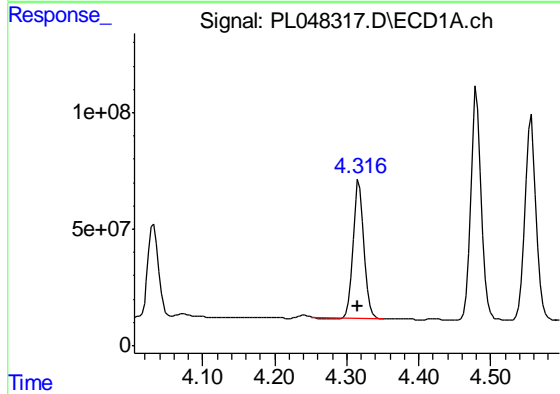


#3 gamma-BHC (Lindane)
 R.T.: 4.032 min
 Delta R.T.: 0.001 min
 Response: 409318942
 Conc: 27.69 ng/ml

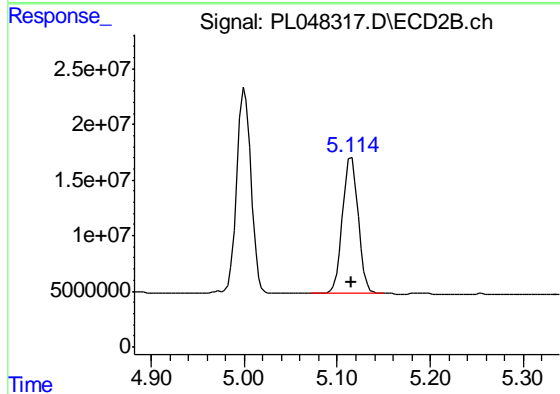
Instrument :
 ECD_L
 ClientSampled :
 A5122



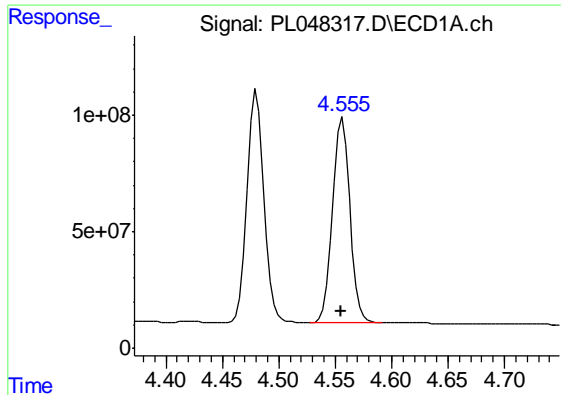
#3 gamma-BHC (Lindane)
 R.T.: 4.612 min
 Delta R.T.: 0.000 min
 Response: 90986667
 Conc: 26.60 ng/ml



#4 Heptachlor
 R.T.: 4.317 min
 Delta R.T.: 0.002 min
 Response: 619510723
 Conc: 39.54 ng/ml

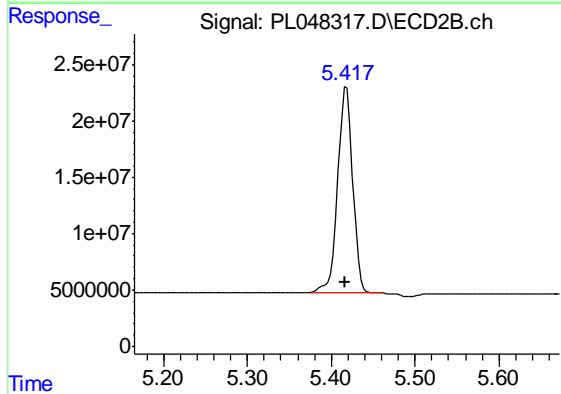


#4 Heptachlor
 R.T.: 5.115 min
 Delta R.T.: 0.000 min
 Response: 143099167
 Conc: 39.31 ng/ml

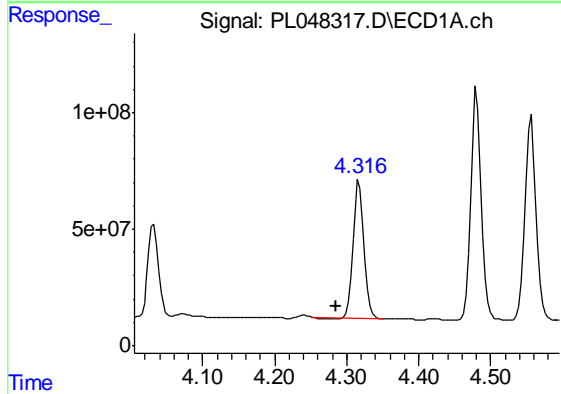


#5 Aldrin
 R.T.: 4.556 min
 Delta R.T.: 0.002 min
 Response: 955119293
 Conc: 64.10 ng/ml

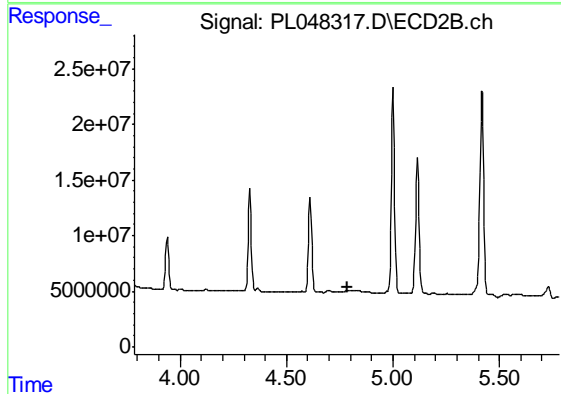
Instrument :
 ECD_L
 ClientSampled :
 A5122



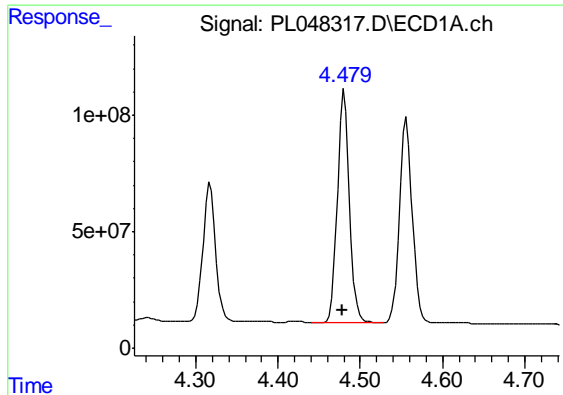
#5 Aldrin
 R.T.: 5.418 min
 Delta R.T.: 0.001 min
 Response: 226419701
 Conc: 68.64 ng/ml



#6 beta-BHC
 R.T.: 4.317 min
 Delta R.T.: 0.033 min
 Response: 619510723
 Conc: 89.78 ng/ml



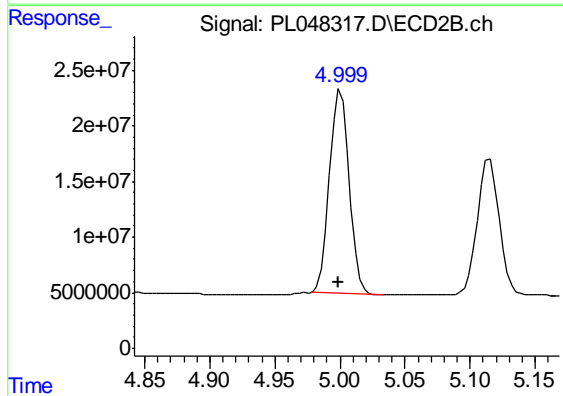
#6 beta-BHC
 R.T.: 0.000 min
 Exp R.T. : 4.785 min
 Response: 0
 Conc: N.D.



#7 delta-BHC

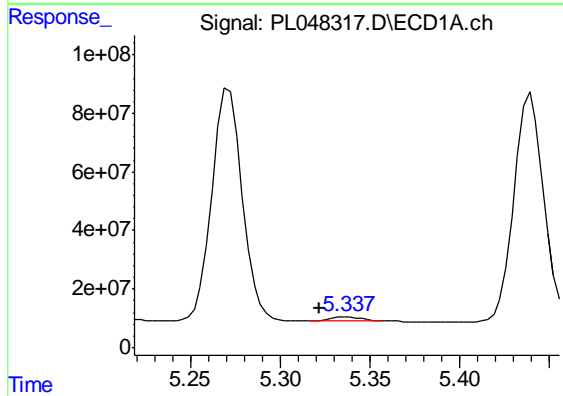
R.T.: 4.480 min
Delta R.T.: 0.002 min
Response: 1018605342
Conc: 64.70 ng/ml

Instrument :
ECD_L
ClientSampled :
A5122



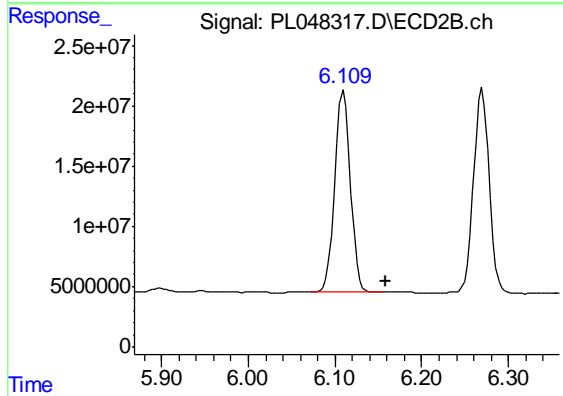
#7 delta-BHC

R.T.: 5.001 min
Delta R.T.: 0.001 min
Response: 193278987
Conc: 66.82 ng/ml



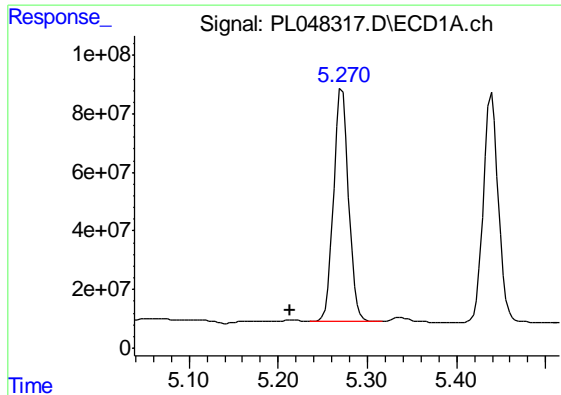
#9 Endosulfan I

R.T.: 5.338 min
Delta R.T.: 0.016 min
Response: 14096123
Conc: 1.07 ng/ml



#9 Endosulfan I

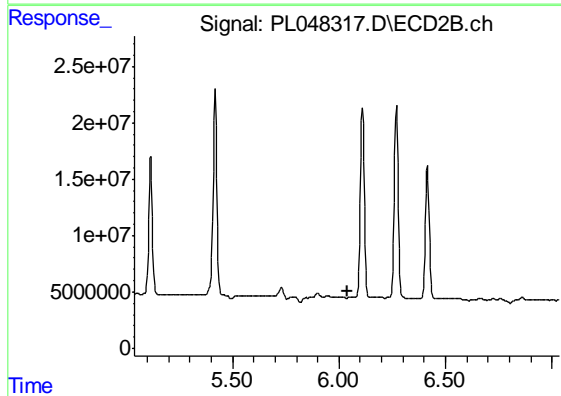
R.T.: 6.110 min
Delta R.T.: -0.048 min
Response: 211567575
Conc: 69.82 ng/ml



#10 trans-Chlordane

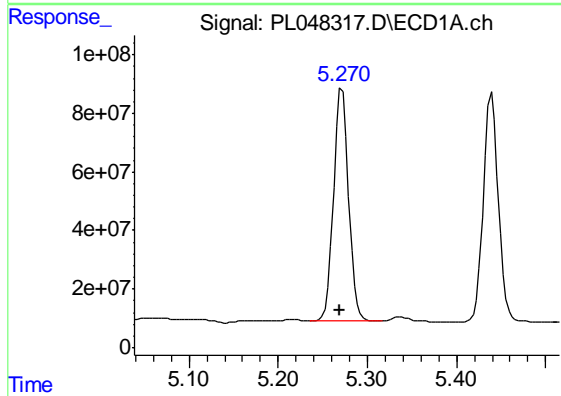
R.T.: 5.271 min
 Delta R.T.: 0.058 min
 Response: 929613083
 Conc: 64.37 ng/ml

Instrument :
 ECD_L
 ClientSampled :
 A5122



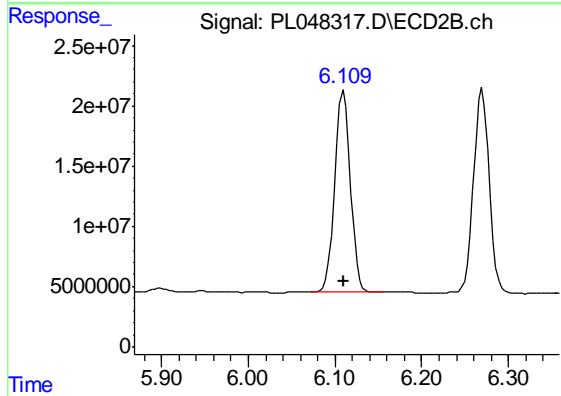
#10 trans-Chlordane

R.T.: 0.000 min
 Exp R.T. : 6.037 min
 Response: 0
 Conc: N.D.



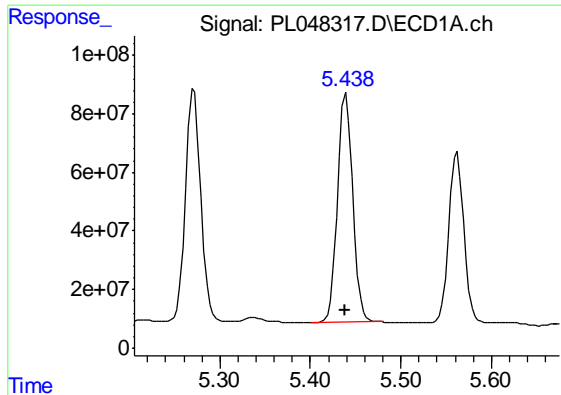
#11 cis-Chlordane

R.T.: 5.271 min
 Delta R.T.: 0.002 min
 Response: 929613083
 Conc: 66.49 ng/ml



#11 cis-Chlordane

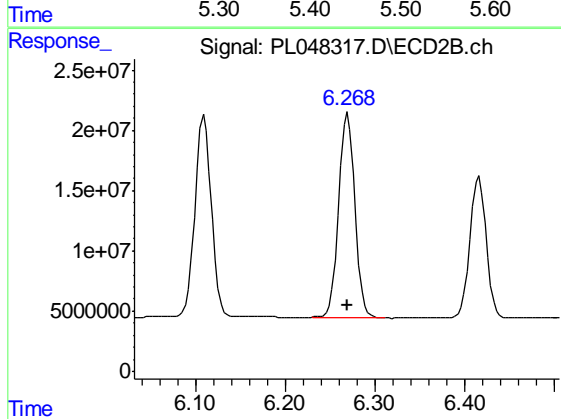
R.T.: 6.110 min
 Delta R.T.: 0.000 min
 Response: 211567575
 Conc: 66.27 ng/ml



#12 4,4'-DDE

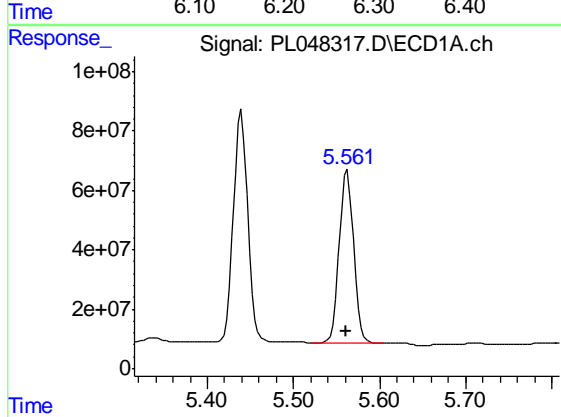
R.T.: 5.440 min
 Delta R.T.: 0.002 min
 Response: 903019850
 Conc: 64.12 ng/ml

Instrument :
 ECD_L
 ClientSampled :
 A5122



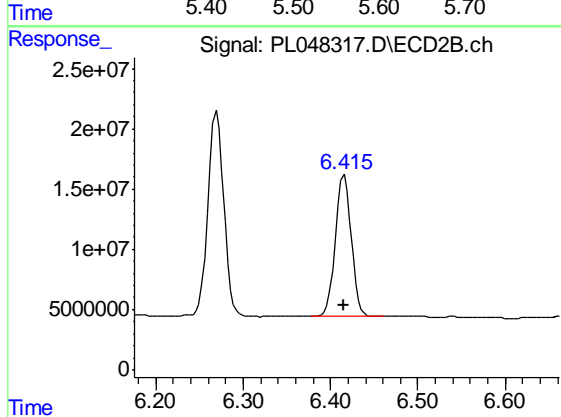
#12 4,4'-DDE

R.T.: 6.270 min
 Delta R.T.: 0.001 min
 Response: 212458048
 Conc: 69.08 ng/ml



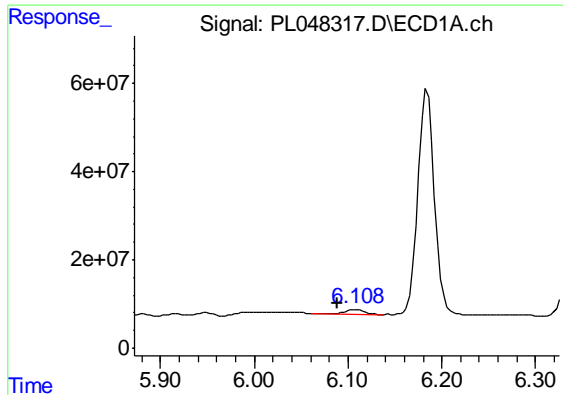
#13 Dieldrin

R.T.: 5.562 min
 Delta R.T.: 0.001 min
 Response: 677669588
 Conc: 47.39 ng/ml



#13 Dieldrin

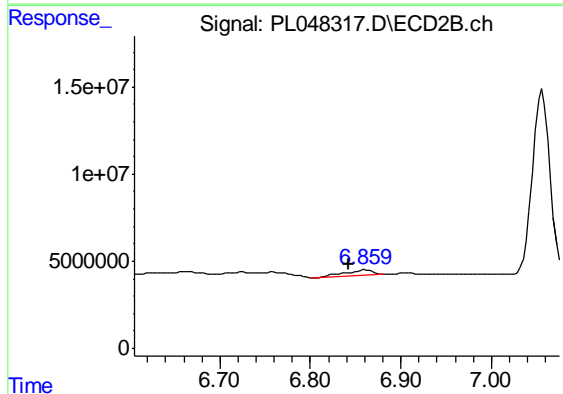
R.T.: 6.416 min
 Delta R.T.: 0.000 min
 Response: 147748904
 Conc: 46.90 ng/ml



#15 Endosulfan II

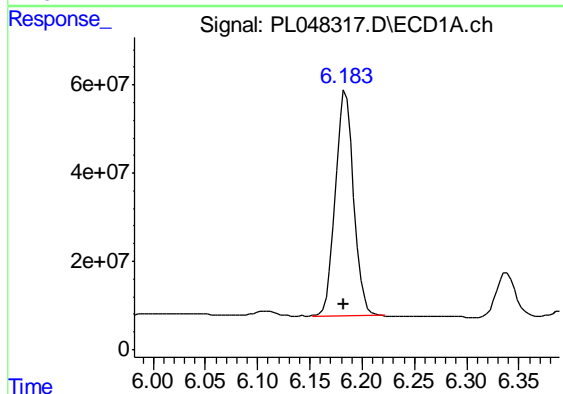
R.T.: 6.109 min
 Delta R.T.: 0.021 min
 Response: 13416731
 Conc: 1.07 ng/ml

Instrument :
 ECD_L
 ClientSampled :
 A5122



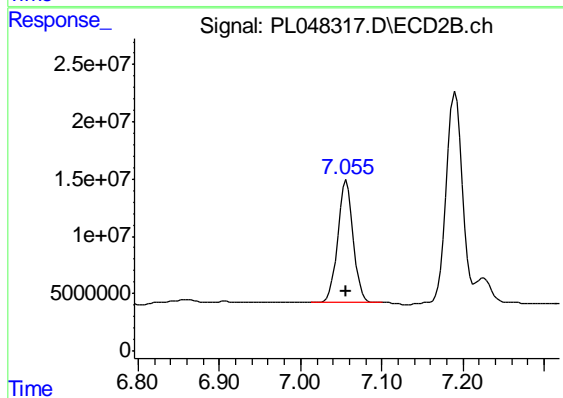
#15 Endosulfan II

R.T.: 6.861 min
 Delta R.T.: 0.019 min
 Response: 7112676
 Conc: 2.53 ng/ml



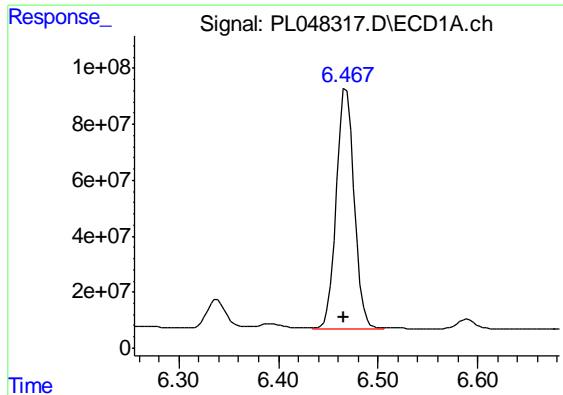
#17 4,4'-DDT

R.T.: 6.184 min
 Delta R.T.: 0.002 min
 Response: 621572257
 Conc: 55.79 ng/ml



#17 4,4'-DDT

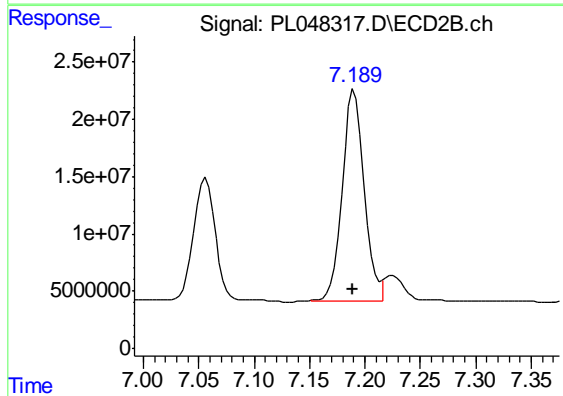
R.T.: 7.056 min
 Delta R.T.: 0.000 min
 Response: 142427648
 Conc: 56.64 ng/ml



#19 Endosulfan Sulfate

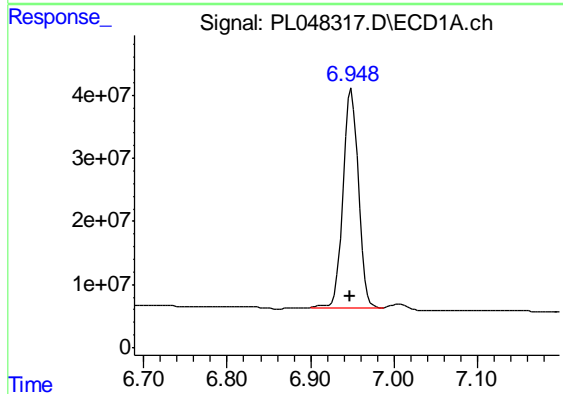
R.T.: 6.468 min
Delta R.T.: 0.003 min
Response: 1068348404
Conc: 93.23 ng/ml

Instrument :
ECD_L
ClientSampled :
A5122



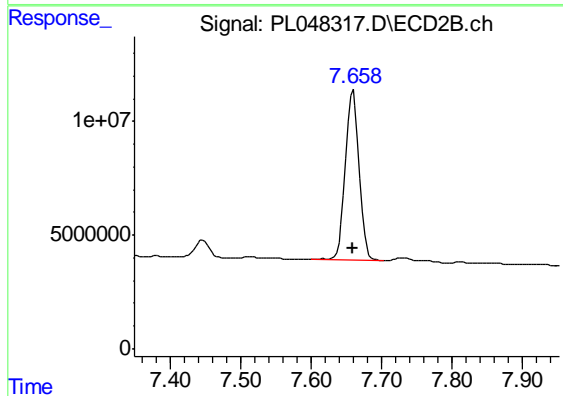
#19 Endosulfan Sulfate

R.T.: 7.191 min
Delta R.T.: 0.001 min
Response: 252927521
Conc: 95.45 ng/ml



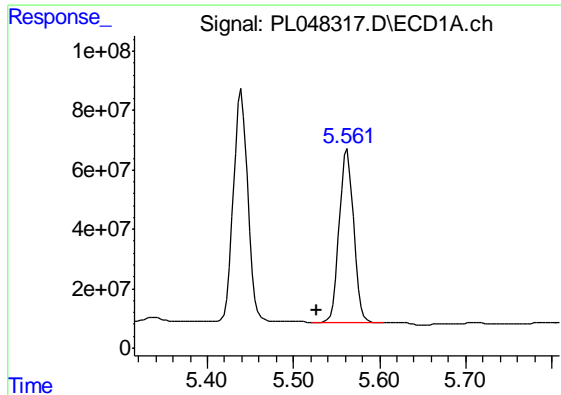
#21 Endrin ketone

R.T.: 6.950 min
Delta R.T.: 0.002 min
Response: 444170724
Conc: 37.77 ng/ml



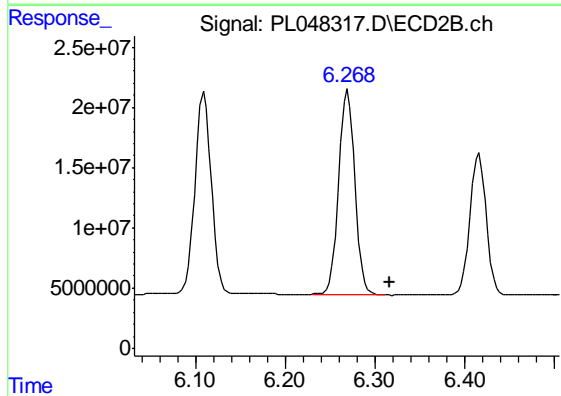
#21 Endrin ketone

R.T.: 7.659 min
Delta R.T.: 0.000 min
Response: 101130667
Conc: 38.34 ng/ml

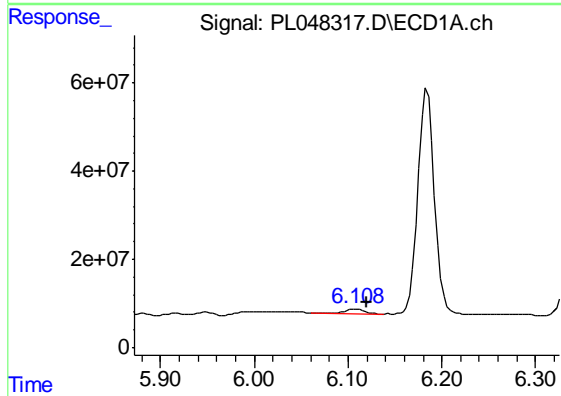


#22 Toxaphene-1
 R.T.: 5.562 min
 Delta R.T.: 0.036 min
 Response: 677669588
 Conc: 9724.65 ng/ml

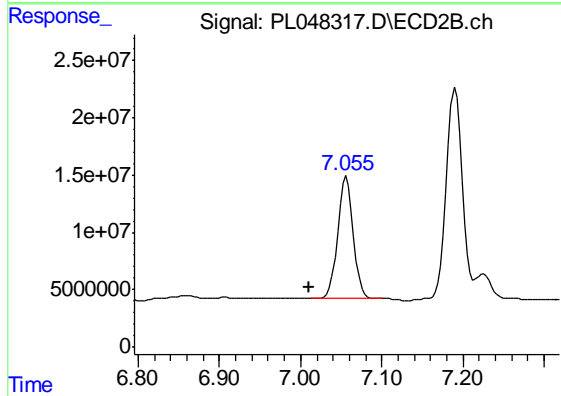
Instrument :
 ECD_L
 ClientSampled :
 A5122



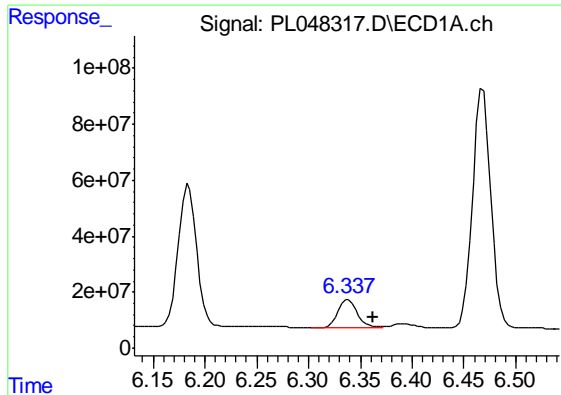
#22 Toxaphene-1
 R.T.: 6.270 min
 Delta R.T.: -0.047 min
 Response: 212458048
 Conc: 13967.92 ng/ml



#24 Toxaphene-3
 R.T.: 6.109 min
 Delta R.T.: -0.011 min
 Response: 13416731
 Conc: 68.86 ng/ml

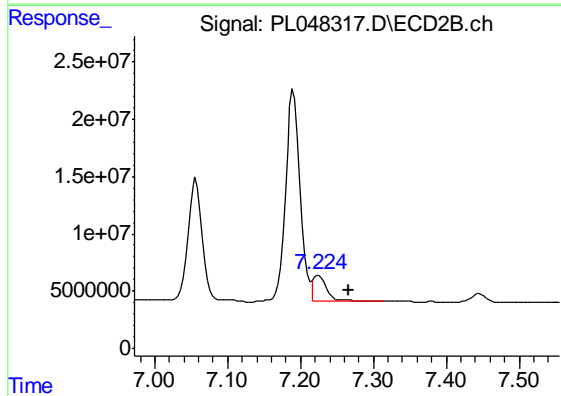


#24 Toxaphene-3
 R.T.: 7.056 min
 Delta R.T.: 0.046 min
 Response: 142427648
 Conc: 6046.75 ng/ml

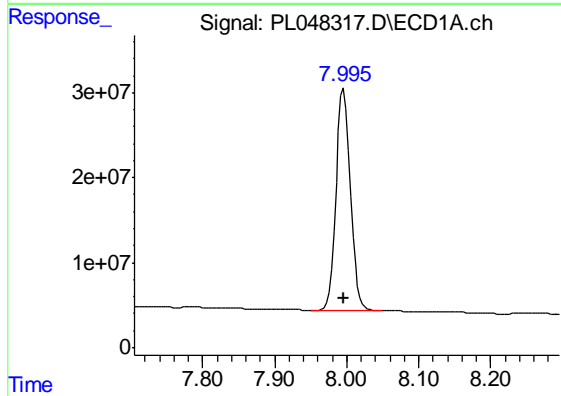


#25 Toxaphene-4
 R.T.: 6.338 min
 Delta R.T.: -0.025 min
 Response: 132321299
 Conc: 678.36 ng/ml

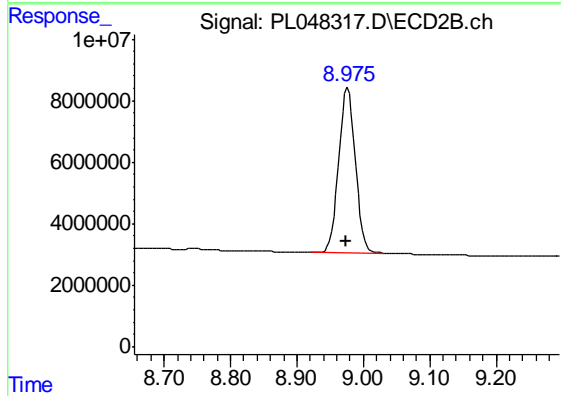
Instrument :
 ECD_L
 ClientSampleId :
 A5122



#25 Toxaphene-4
 R.T.: 7.225 min
 Delta R.T.: -0.040 min
 Response: 30584732
 Conc: 1528.16 ng/ml



#27 Decachlorobiphenyl
 R.T.: 7.996 min
 Delta R.T.: 0.001 min
 Response: 360986150
 Conc: 33.88 ng/ml



#27 Decachlorobiphenyl
 R.T.: 8.977 min
 Delta R.T.: 0.002 min
 Response: 93900456
 Conc: 34.44 ng/ml