

Data Path : Z:\pestpcbsrv\HPCHEM1\ECD_L\Data\PL050923\
 Data File : PL082592.D
 Signal(s) : Signal #1: ECD1A.ch Signal #2: ECD2B.ch
 Acq On : 09 May 2023 13:24
 Operator : AR\AJ
 Sample : 02665-01
 Misc :
 ALS Vial : 7 Sample Multiplier: 1

Instrument :
 ECD_L
 ClientSampleId :

Integration File signal 1: autoint1.e
 Integration File signal 2: autoint2.e
 Quant Time: May 09 21:10:51 2023
 Quant Method : Z:\pestpcbsrv\HPCHEM1\ECD_L\methods\PL042023.M
 Quant Title : GC Extractables
 QLast Update : Fri Apr 21 03:12:31 2023
 Response via : Initial Calibration
 Integrator: ChemStation

Volume Inj. : 1 µl
 Signal #1 Phase : ZB-MR2 Signal #2 Phase: ZB-MR1
 Signal #1 Info : 30M x 0.32mm x0.2 Signal #2 Info : 30M x 0.32mm x0.5µm

	Compound	RT#1	RT#2	Resp#1	Resp#2	ng/ml	ng/ml

System Monitoring Compounds							
1)	SA Tetrachlo...	3.323	2.643	49802347	41250178	18.644	17.805
28)	SA Decachlor...	8.743	7.753	34857767	39564579	18.259	17.334
Target Compounds							
2)	A alpha-BHC	0.000	3.134	0	127888	N.D.	0.038 #
3)	MA gamma-BHC...	4.074f	3.476	343905	1516993	0.092	0.472 #
4)	MA Heptachlor	4.680	3.821f	1221365	47619	0.334	0.014 #
5)	MB Aldrin	5.004	4.057f	232562	2867017	0.071	0.910 #
6)	B beta-BHC	4.309	3.771	734003	394307	0.430	0.289 #
7)	B delta-BHC	4.524f	3.993	2894762	198120	0.805	0.065 #
8)	Heptachlo...	5.446	4.575	527447	148134	0.173	0.051 #
9)	A Endosulfan I	5.821	4.978f	512525	2158371	0.185	0.809 #
10)	B gamma-Chl...	5.674f	4.852f	4128450	1386817	1.373	0.478 #
11)	B alpha-Chl...	5.776	4.890	576043	2201475	0.193	0.758 #
13)	MA Dieldrin	6.126f	5.223	211905	2104912	0.077	0.779 #
14)	MA Endrin	0.000	5.486	0	401015	N.D.	0.164 #
15)	B Endosulfa...	0.000	5.810f	0	1442661	N.D.	0.640 #
16)	A 4,4'-DDD	6.456	5.641	1685029	-463781	0.831	N.D. #
17)	MA 4,4'-DDT	6.782	5.879	298191	741158	0.130	0.351 #
18)	B Endrin al...	0.000	5.977	0	331291	N.D.	0.177 #
19)	B Endosulfa...	6.911	6.203	56508	197544	0.024	0.084 #
20)	A Methoxychlor	0.000	6.490f	0	1355449	N.D.	1.119 #
22)	Mirex	7.864	0.000	156063	0	0.080	N.D. #
23)	Chlordane-1	0.000	3.647	0	1685305	N.D.	19.003 #
24)	Chlordane-2	5.004	4.179f	232562	1338347	1.953	11.934 #
25)	Chlordane-3	5.674f	4.852f	4128450	1386817	9.563	4.881 #
26)	Chlordane-4	5.776	4.890	576043	2201475	1.108	7.377 #
27)	Chlordane-5	0.000	5.810f	0	1442661	N.D.	14.615 #

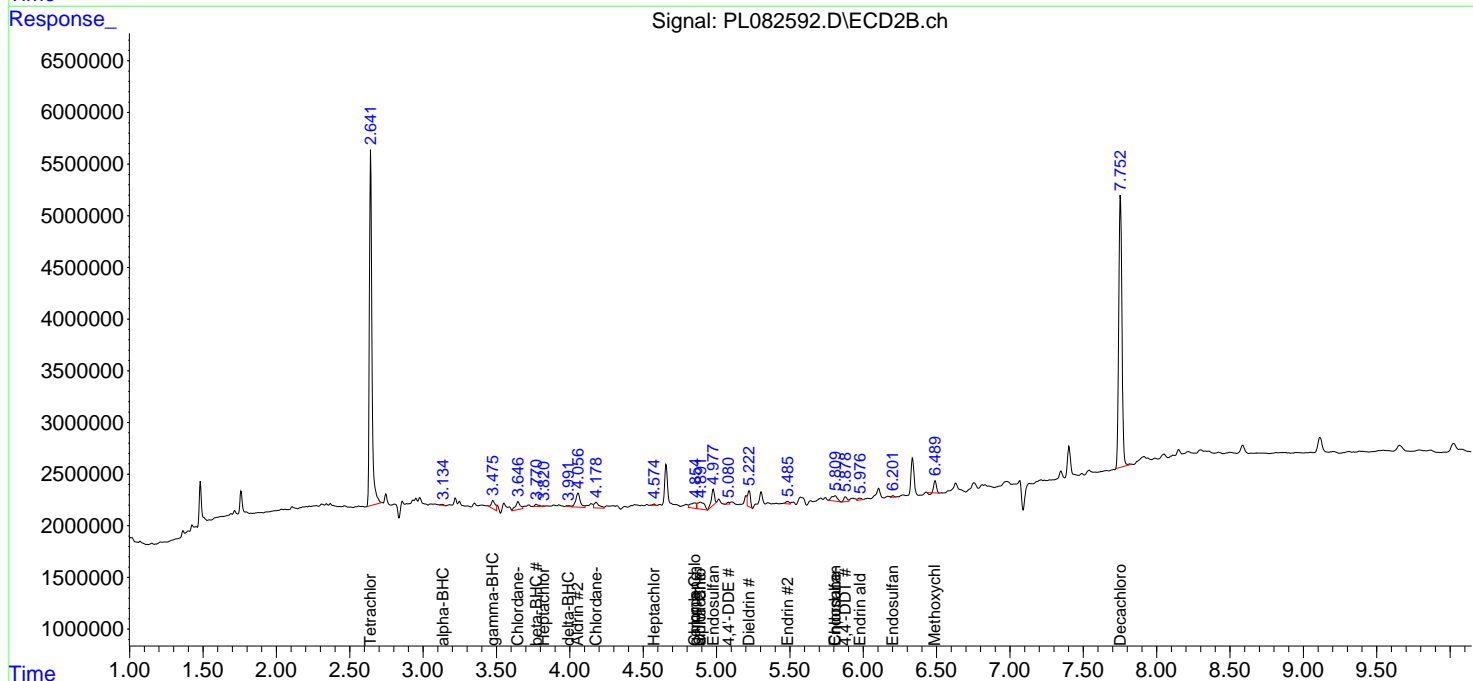
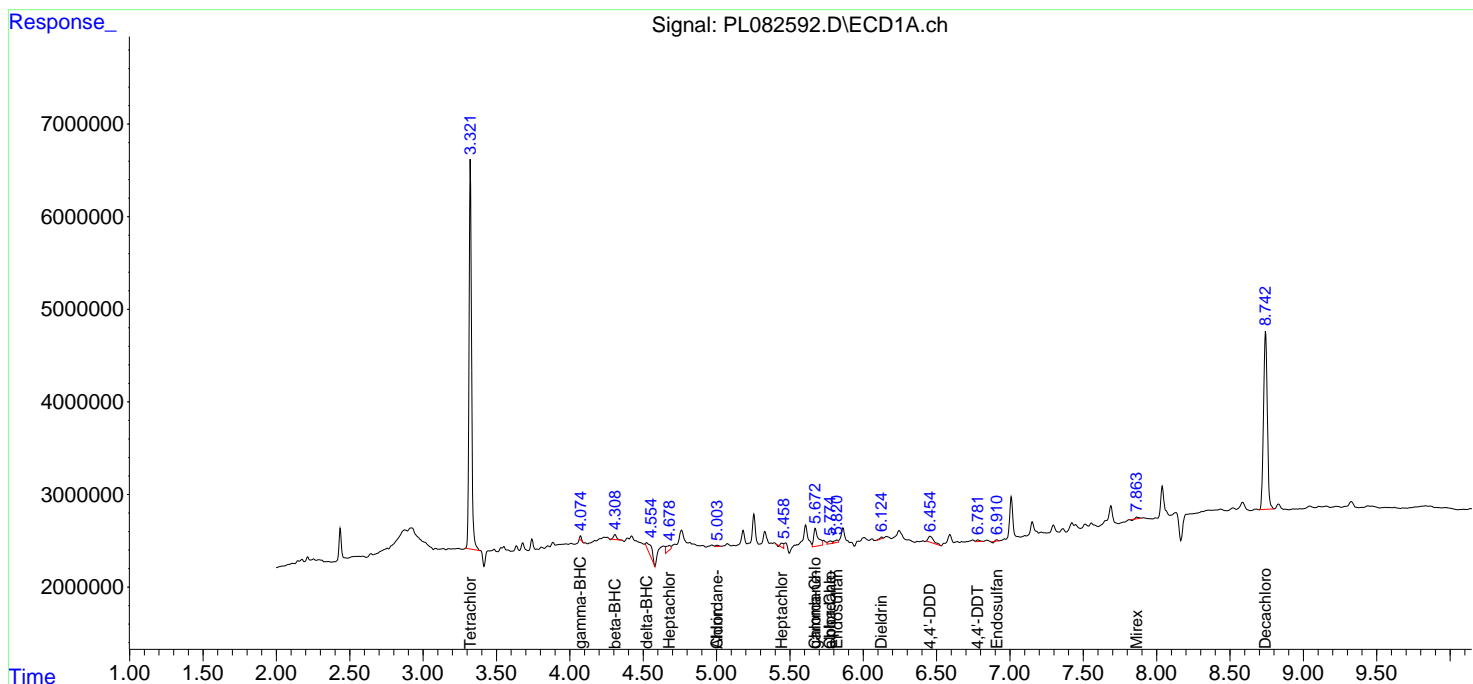
(f)=RT Delta > 1/2 Window (#)=Amounts differ by > 25% (m)=manual int.

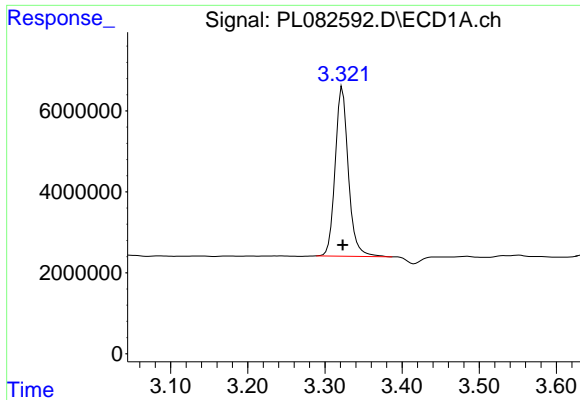
Data Path : Z:\pestpcbsrv\HPCHEM1\ECD_L\Data\PL050923\
 Data File : PL082592.D
 Signal(s) : Signal #1: ECD1A.ch Signal #2: ECD2B.ch
 Acq On : 09 May 2023 13:24
 Operator : AR\AJ
 Sample : 02665-01
 Misc :
 ALS Vial : 7 Sample Multiplier: 1

Instrument :
 ECD_L
 ClientSampleId :

Integration File signal 1: autoint1.e
 Integration File signal 2: autoint2.e
 Quant Time: May 09 21:10:51 2023
 Quant Method : Z:\pestpcbsrv\HPCHEM1\ECD_L\methods\PL042023.M
 Quant Title : GC Extractables
 QLast Update : Fri Apr 21 03:12:31 2023
 Response via : Initial Calibration
 Integrator: ChemStation

Volume Inj. : 1 µl
 Signal #1 Phase : ZB-MR2 Signal #2 Phase: ZB-MR1
 Signal #1 Info : 30M x 0.32mm x0.2 Signal #2 Info : 30M x 0.32mm x0.5µm

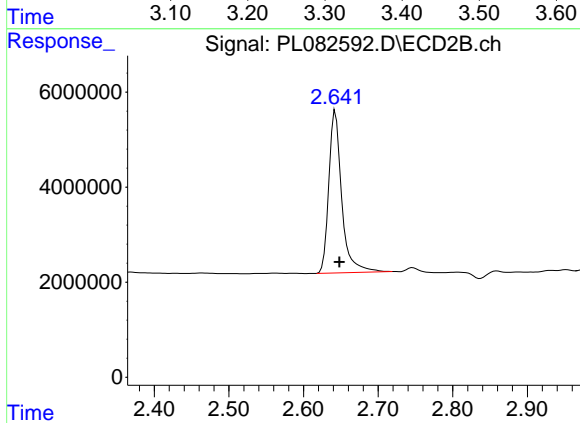




#1 Tetrachloro-m-xylene

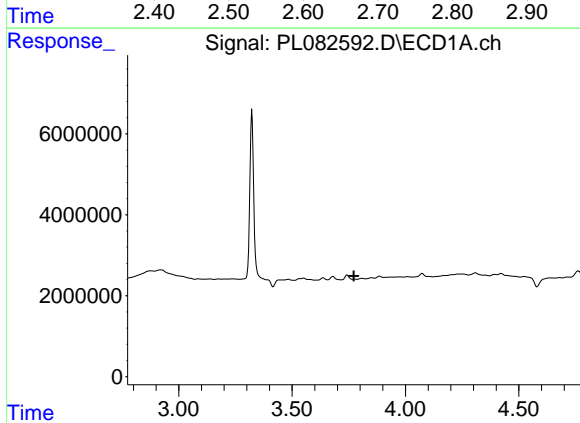
R.T.: 3.323 min
 Delta R.T.: 0.000 min
 Response: 49802347
 Conc: 18.64 ng/ml

Instrument :
 ECD_L
 ClientSampleId :



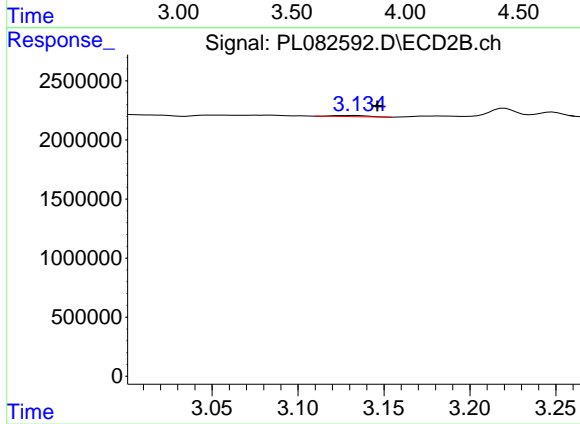
#1 Tetrachloro-m-xylene

R.T.: 2.643 min
 Delta R.T.: -0.005 min
 Response: 41250178
 Conc: 17.81 ng/ml



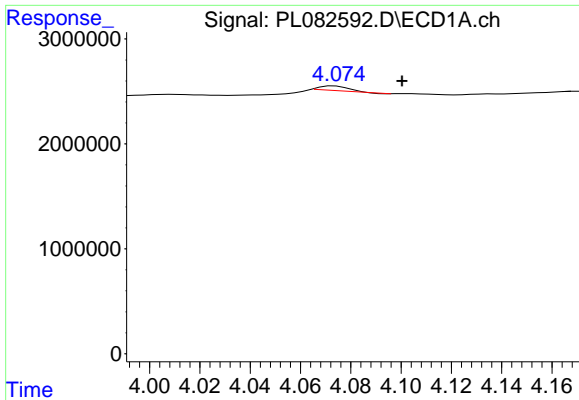
#2 alpha-BHC

R.T.: 0.000 min
 Exp R.T. : 3.772 min
 Response: 0
 Conc: N.D.



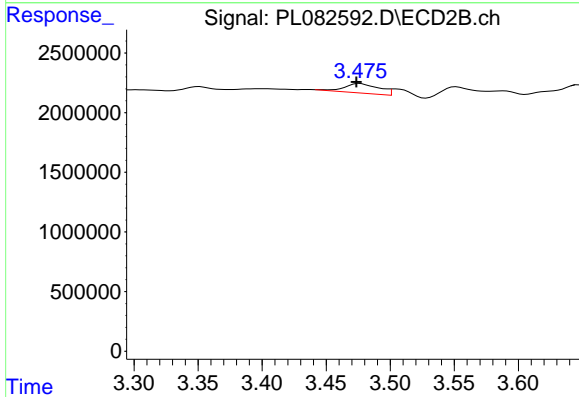
#2 alpha-BHC

R.T.: 3.134 min
 Delta R.T.: -0.012 min
 Response: 127888
 Conc: 0.04 ng/ml

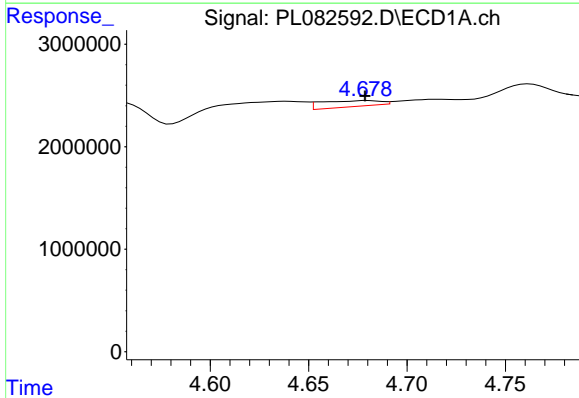


#3 gamma-BHC (Lindane)
 R.T.: 4.074 min
 Delta R.T.: -0.027 min
 Response: 343905
 Conc: 0.09 ng/ml

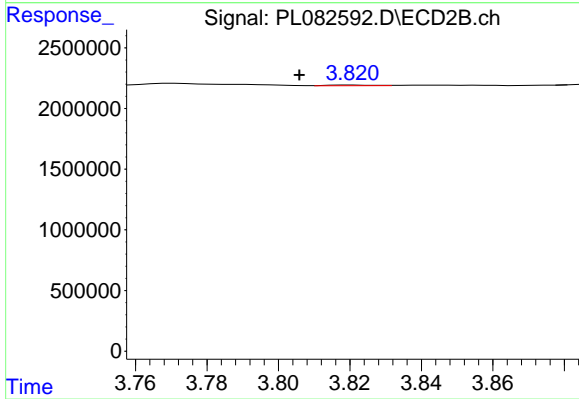
Instrument :
 ECD_L
 ClientSampleId :



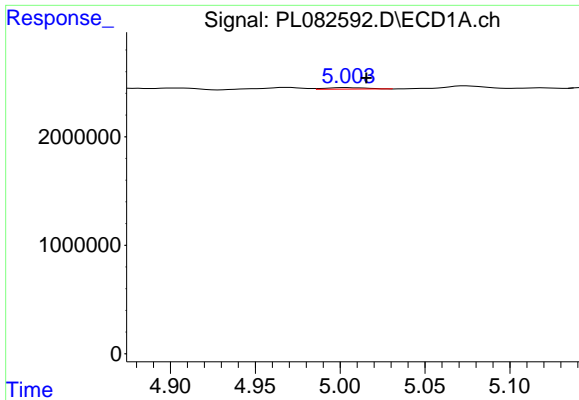
#3 gamma-BHC (Lindane)
 R.T.: 3.476 min
 Delta R.T.: 0.003 min
 Response: 1516993
 Conc: 0.47 ng/ml



#4 Heptachlor
 R.T.: 4.680 min
 Delta R.T.: 0.001 min
 Response: 1221365
 Conc: 0.33 ng/ml

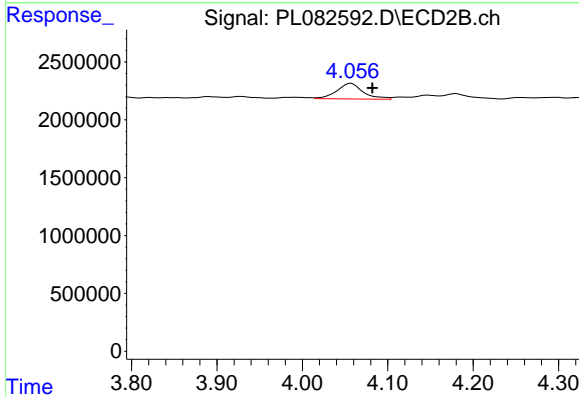


#4 Heptachlor
 R.T.: 3.821 min
 Delta R.T.: 0.016 min
 Response: 47619
 Conc: 0.01 ng/ml

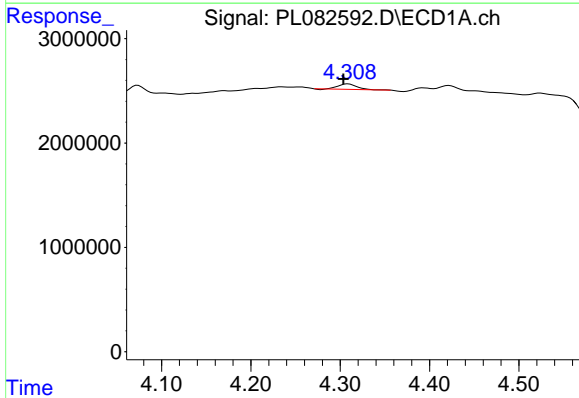


#5 Aldrin
 R.T.: 5.004 min
 Delta R.T.: -0.011 min
 Response: 232562
 Conc: 0.07 ng/ml

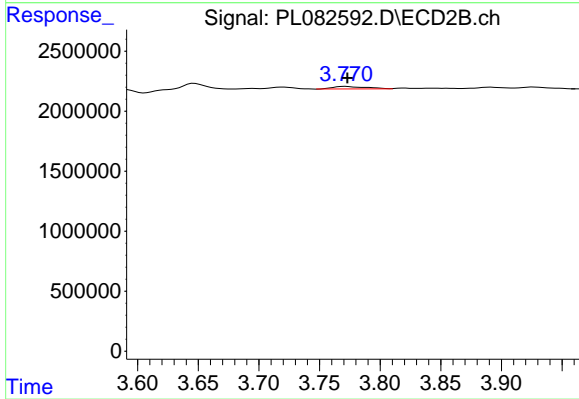
Instrument :
 ECD_L
 ClientSampleId :



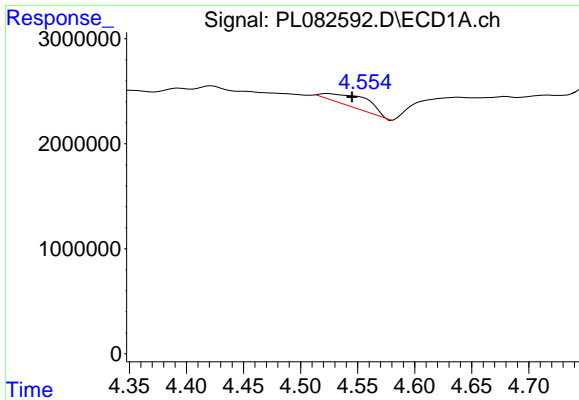
#5 Aldrin
 R.T.: 4.057 min
 Delta R.T.: -0.025 min
 Response: 2867017
 Conc: 0.91 ng/ml



#6 beta-BHC
 R.T.: 4.309 min
 Delta R.T.: 0.005 min
 Response: 734003
 Conc: 0.43 ng/ml

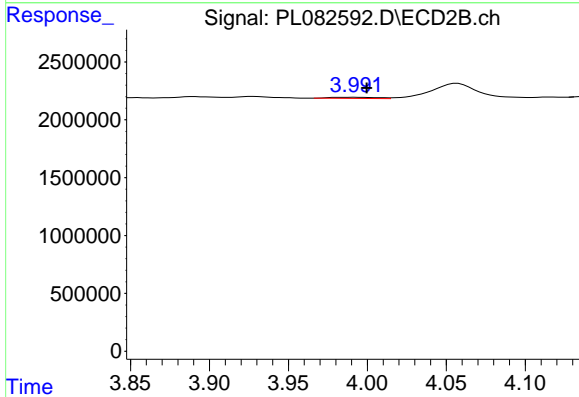


#6 beta-BHC
 R.T.: 3.771 min
 Delta R.T.: -0.002 min
 Response: 394307
 Conc: 0.29 ng/ml

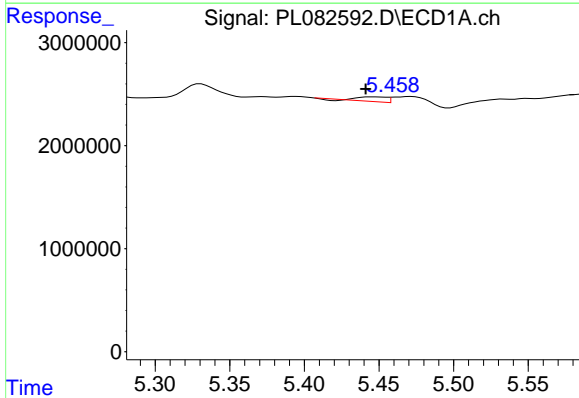


#7 delta-BHC
 R.T.: 4.524 min
 Delta R.T.: -0.021 min
 Response: 2894762
 Conc: 0.80 ng/ml

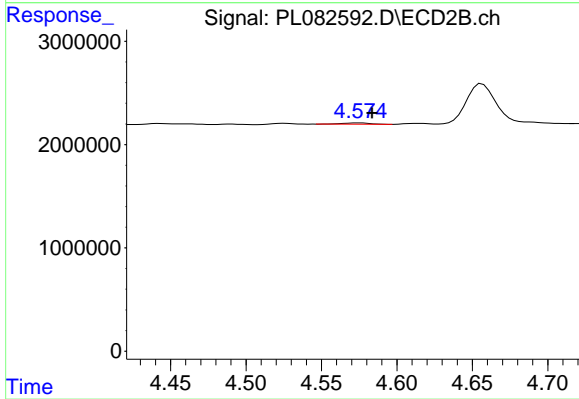
Instrument :
 ECD_L
 ClientSampleId :



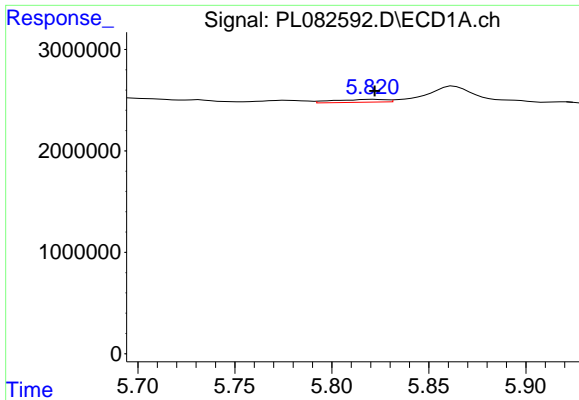
#7 delta-BHC
 R.T.: 3.993 min
 Delta R.T.: -0.007 min
 Response: 198120
 Conc: 0.06 ng/ml



#8 Heptachlor epoxide
 R.T.: 5.446 min
 Delta R.T.: 0.004 min
 Response: 527447
 Conc: 0.17 ng/ml



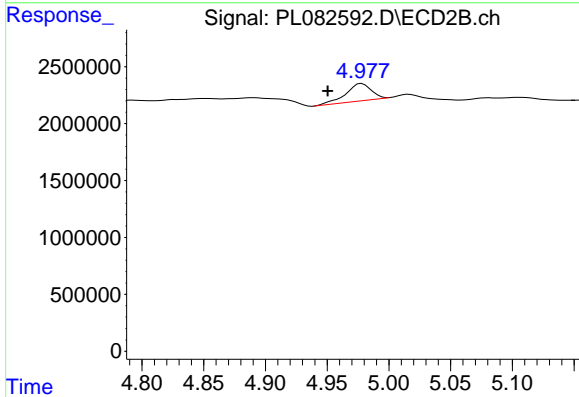
#8 Heptachlor epoxide
 R.T.: 4.575 min
 Delta R.T.: -0.008 min
 Response: 148134
 Conc: 0.05 ng/ml



#9 Endosulfan I

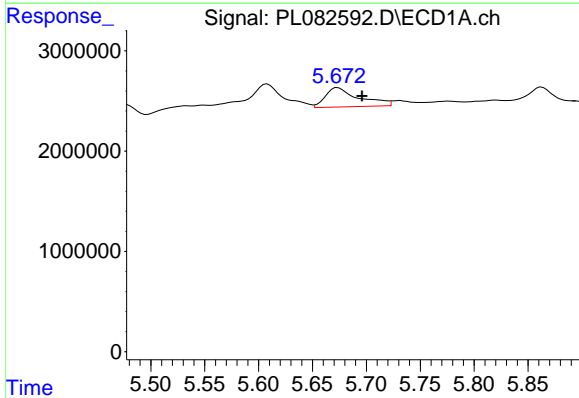
R.T.: 5.821 min
 Delta R.T.: -0.001 min
 Response: 512525
 Conc: 0.18 ng/ml

Instrument :
 ECD_L
 ClientSampleId :



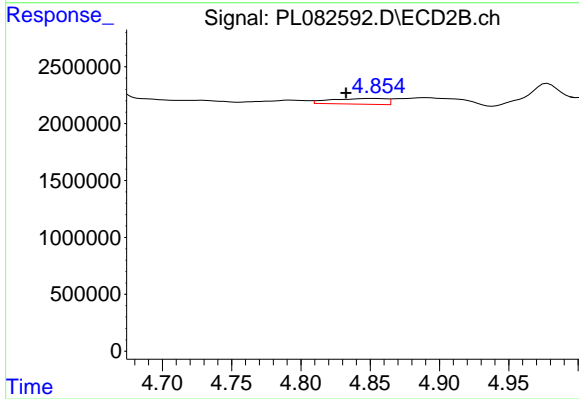
#9 Endosulfan I

R.T.: 4.978 min
 Delta R.T.: 0.028 min
 Response: 2158371
 Conc: 0.81 ng/ml



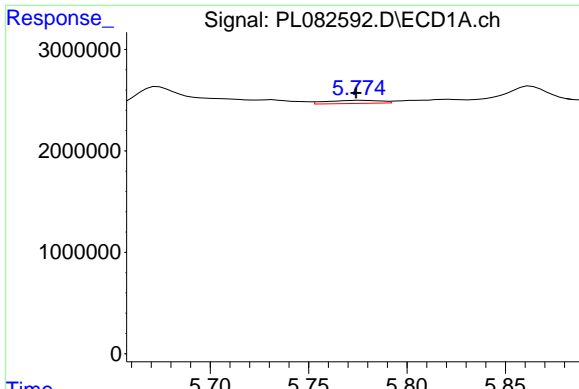
#10 gamma-Chlordane

R.T.: 5.674 min
 Delta R.T.: -0.023 min
 Response: 4128450
 Conc: 1.37 ng/ml



#10 gamma-Chlordane

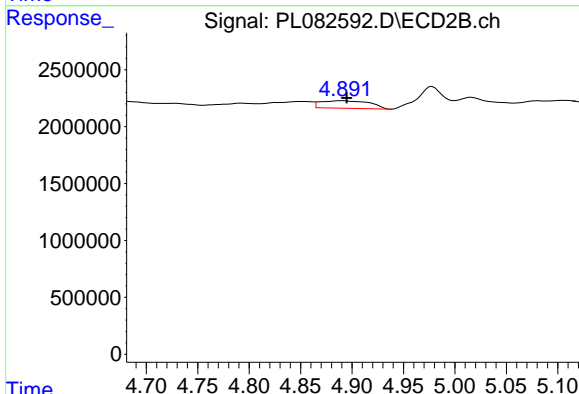
R.T.: 4.852 min
 Delta R.T.: 0.019 min
 Response: 1386817
 Conc: 0.48 ng/ml



#11 alpha-Chlordane

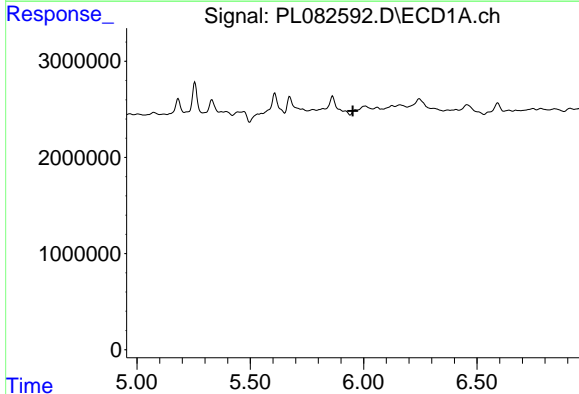
R.T.: 5.776 min
 Delta R.T.: 0.002 min
 Response: 576043
 Conc: 0.19 ng/ml

Instrument :
 ECD_L
 ClientSampleId :



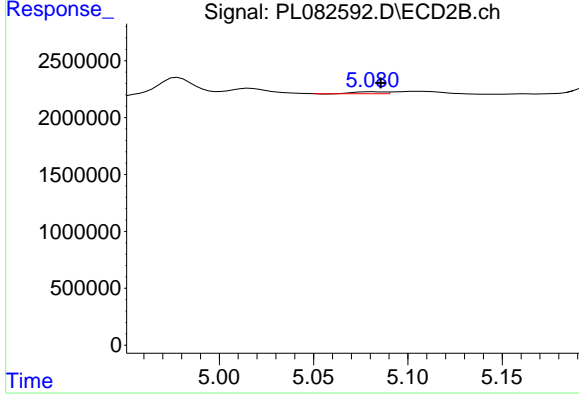
#11 alpha-Chlordane

R.T.: 4.890 min
 Delta R.T.: -0.005 min
 Response: 2201475
 Conc: 0.76 ng/ml



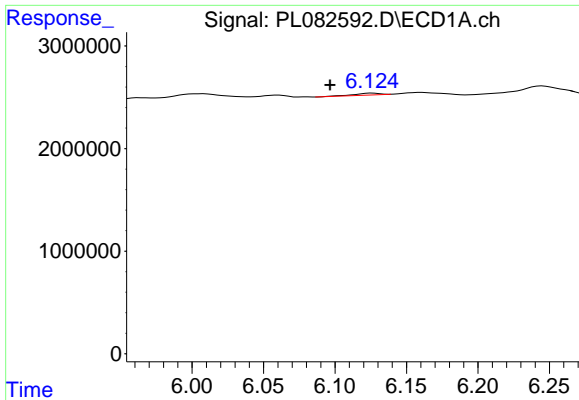
#12 4,4'-DDE

R.T.: 5.964 min
 Delta R.T.: 0.011 min
 Response: -479655
 Conc: N.D.



#12 4,4'-DDE

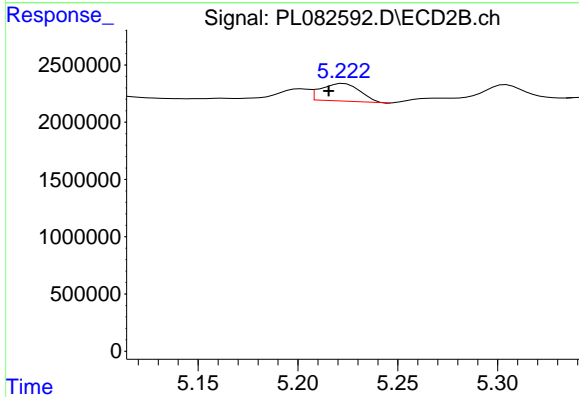
R.T.: 5.081 min
 Delta R.T.: -0.004 min
 Response: 167482
 Conc: 0.07 ng/ml



#13 Dieldrin

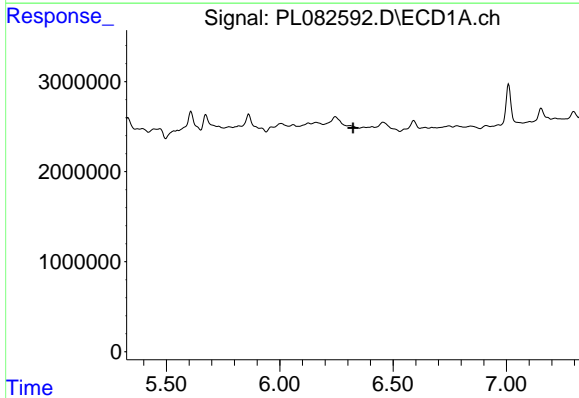
R.T.: 6.126 min
 Delta R.T.: 0.029 min
 Response: 211905
 Conc: 0.08 ng/ml

Instrument :
 ECD_L
 ClientSampleId :



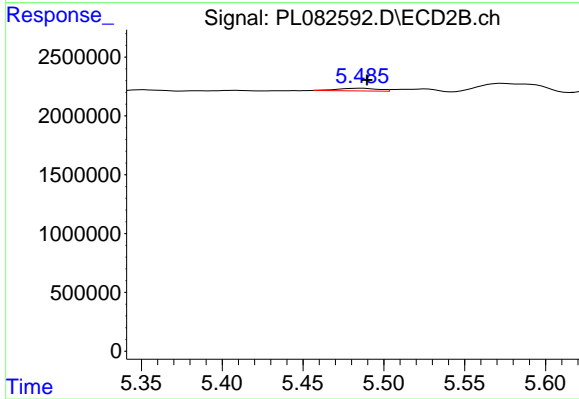
#13 Dieldrin

R.T.: 5.223 min
 Delta R.T.: 0.008 min
 Response: 2104912
 Conc: 0.78 ng/ml



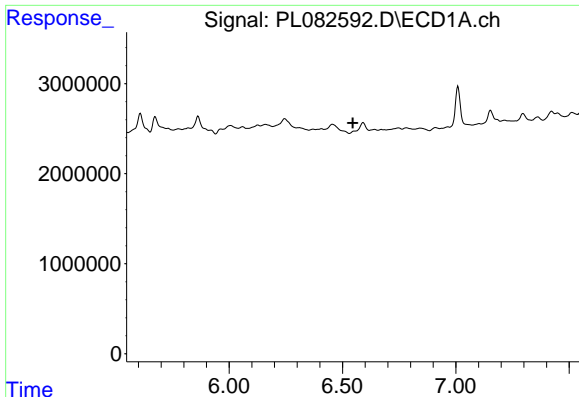
#14 Endrin

R.T.: 0.000 min
 Exp R.T. : 6.324 min
 Response: 0
 Conc: N.D.



#14 Endrin

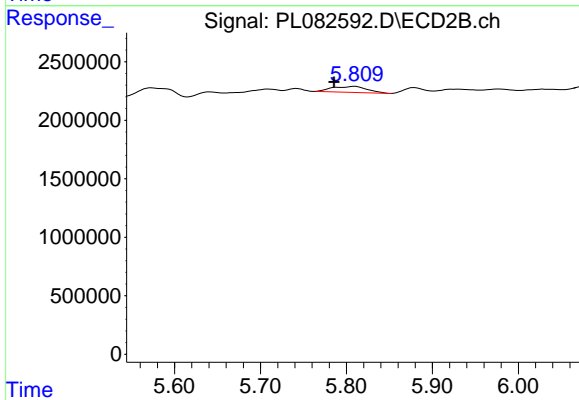
R.T.: 5.486 min
 Delta R.T.: -0.003 min
 Response: 401015
 Conc: 0.16 ng/ml



#15 Endosulfan II

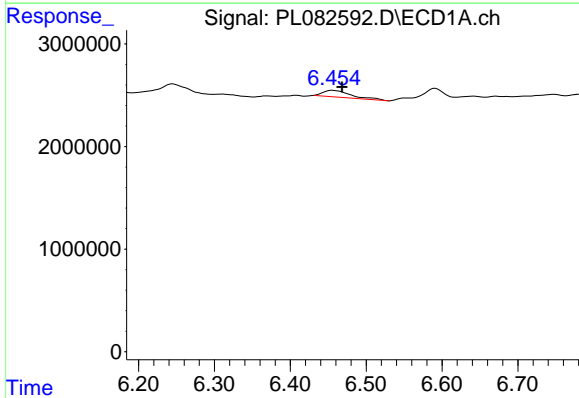
R.T.: 0.000 min
 Exp R.T.: 6.545 min
 Response: 0
 Conc: N.D.

Instrument :
 ECD_L
 ClientSampleId :



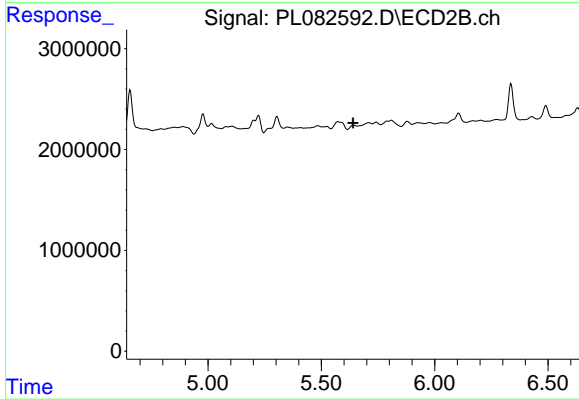
#15 Endosulfan II

R.T.: 5.810 min
 Delta R.T.: 0.024 min
 Response: 1442661
 Conc: 0.64 ng/ml



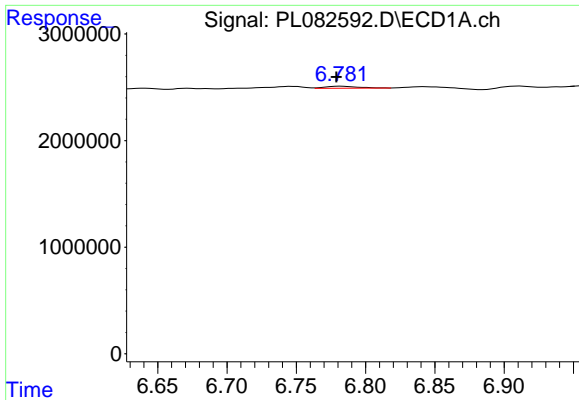
#16 4,4'-DDD

R.T.: 6.456 min
 Delta R.T.: -0.012 min
 Response: 1685029
 Conc: 0.83 ng/ml



#16 4,4'-DDD

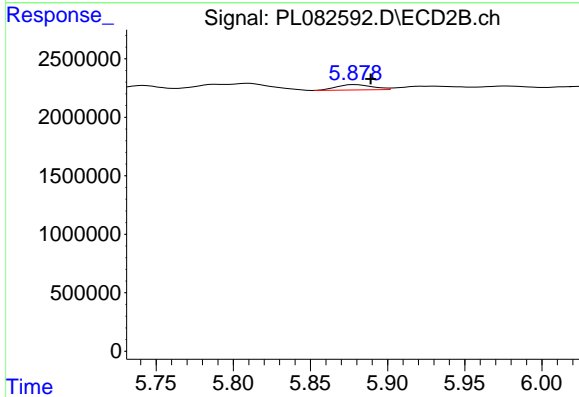
R.T.: 5.641 min
 Delta R.T.: 0.000 min
 Response: -463781
 Conc: N.D.



#17 4,4'-DDT

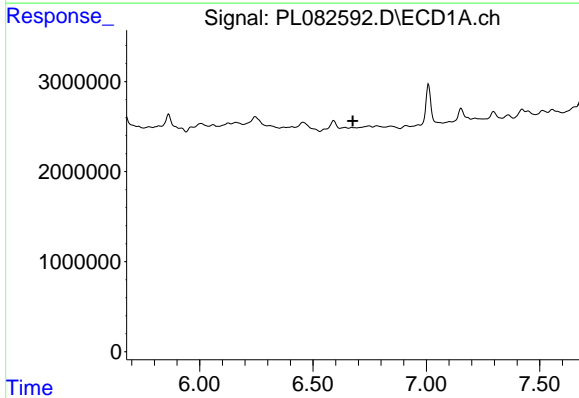
R.T.: 6.782 min
 Delta R.T.: 0.003 min
 Response: 298191
 Conc: 0.13 ng/ml

Instrument :
 ECD_L
 ClientSampleId :



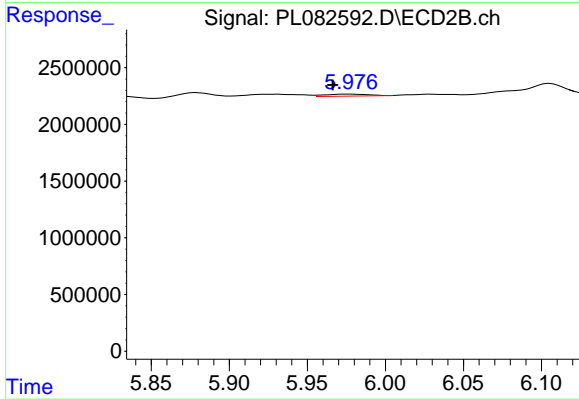
#17 4,4'-DDT

R.T.: 5.879 min
 Delta R.T.: -0.010 min
 Response: 741158
 Conc: 0.35 ng/ml



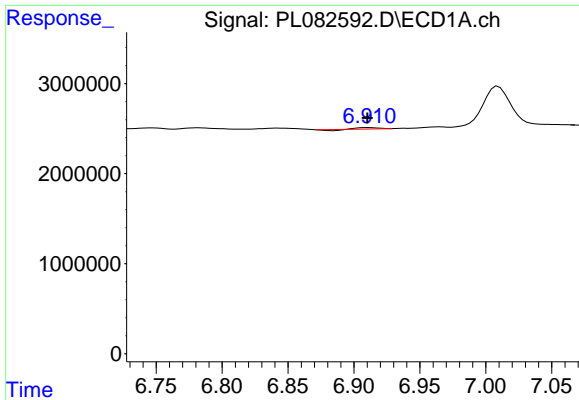
#18 Endrin aldehyde

R.T.: 0.000 min
 Exp R.T. : 6.676 min
 Response: 0
 Conc: N.D.



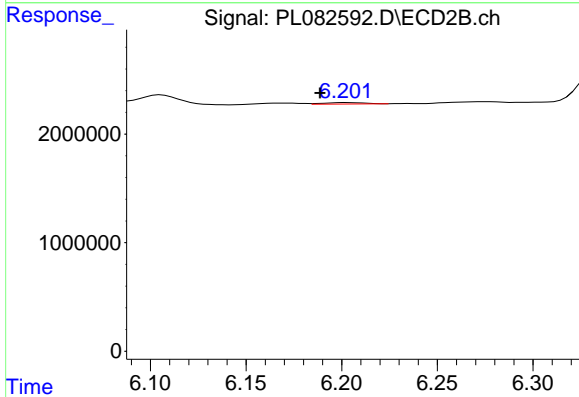
#18 Endrin aldehyde

R.T.: 5.977 min
 Delta R.T.: 0.010 min
 Response: 331291
 Conc: 0.18 ng/ml

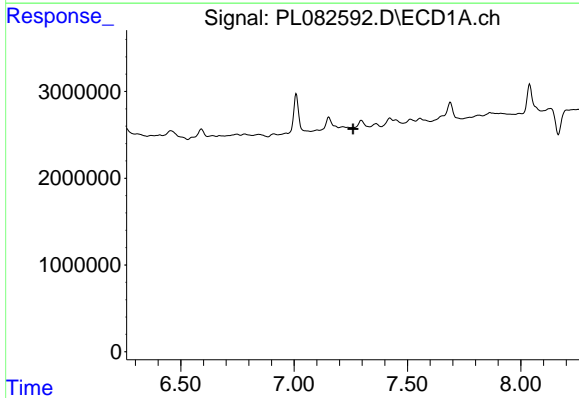


#19 Endosulfan Sulfate
 R.T.: 6.911 min
 Delta R.T.: 0.000 min
 Response: 56508
 Conc: 0.02 ng/ml

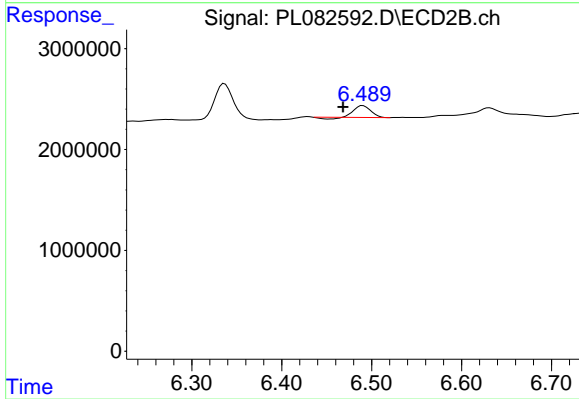
Instrument :
 ECD_L
 ClientSampleId :



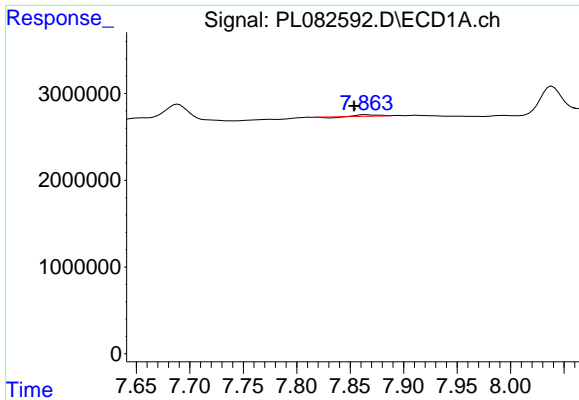
#19 Endosulfan Sulfate
 R.T.: 6.203 min
 Delta R.T.: 0.014 min
 Response: 197544
 Conc: 0.08 ng/ml



#20 Methoxychlor
 R.T.: 0.000 min
 Exp R.T. : 7.260 min
 Response: 0
 Conc: N.D.

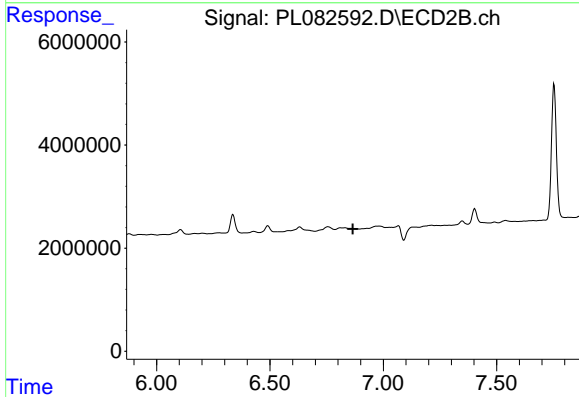


#20 Methoxychlor
 R.T.: 6.490 min
 Delta R.T.: 0.022 min
 Response: 1355449
 Conc: 1.12 ng/ml

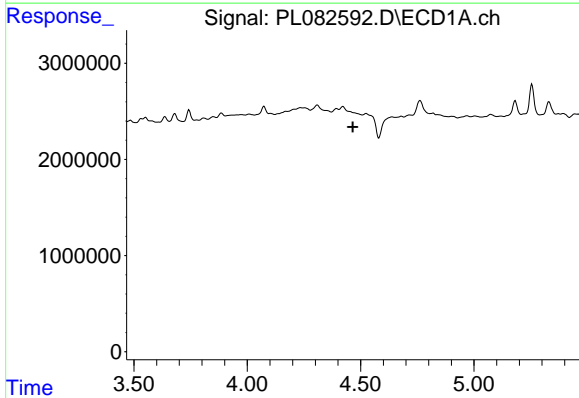


#22 Mirex
 R.T.: 7.864 min
 Delta R.T.: 0.010 min
 Response: 156063
 Conc: 0.08 ng/ml

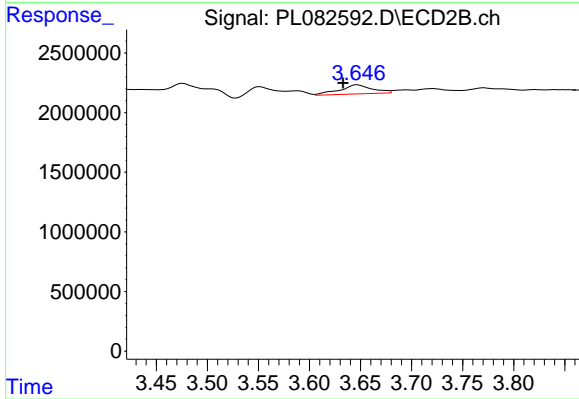
Instrument :
 ECD_L
 ClientSampleId :



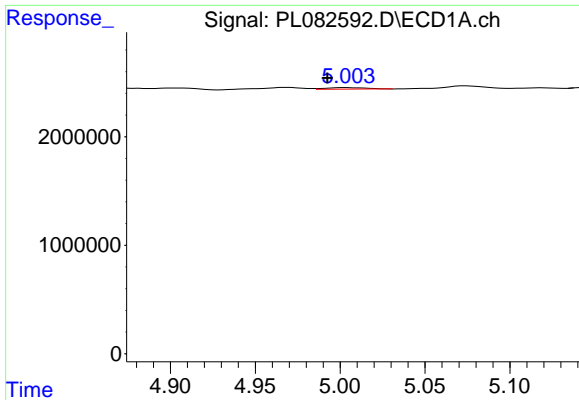
#22 Mirex
 R.T.: 0.000 min
 Exp R.T. : 6.865 min
 Response: 0
 Conc: N.D.



#23 Chlordane-1
 R.T.: 0.000 min
 Exp R.T. : 4.466 min
 Response: 0
 Conc: N.D.



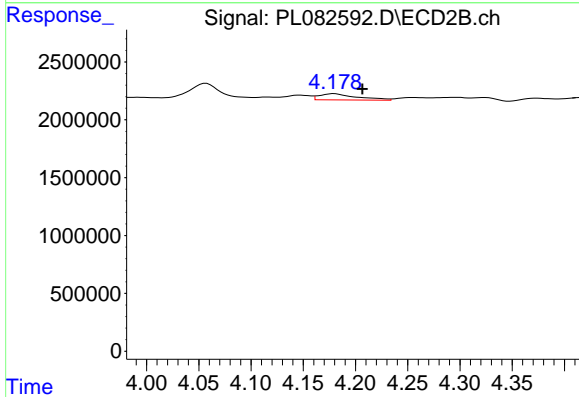
#23 Chlordane-1
 R.T.: 3.647 min
 Delta R.T.: 0.014 min
 Response: 1685305
 Conc: 19.00 ng/ml



#24 Chlordane-2

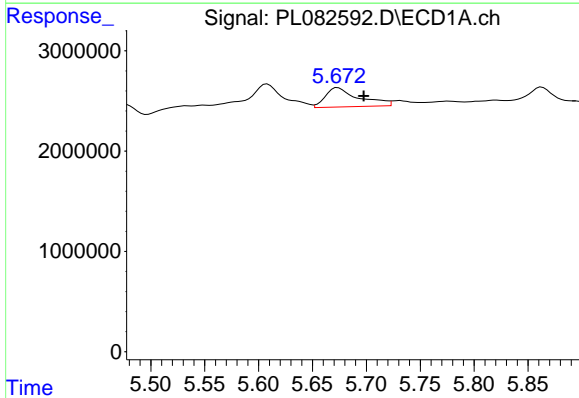
R.T.: 5.004 min
 Delta R.T.: 0.012 min
 Response: 232562
 Conc: 1.95 ng/ml

Instrument :
 ECD_L
 ClientSampleId :



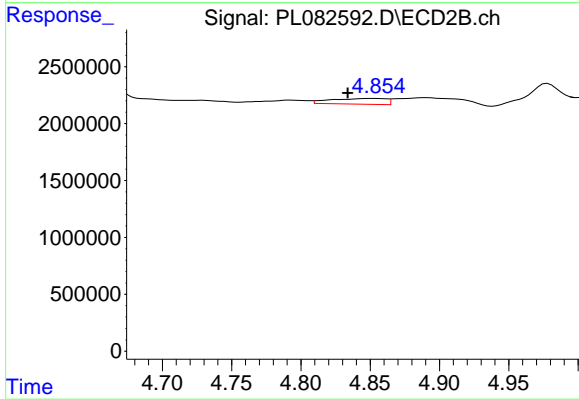
#24 Chlordane-2

R.T.: 4.179 min
 Delta R.T.: -0.027 min
 Response: 1338347
 Conc: 11.93 ng/ml



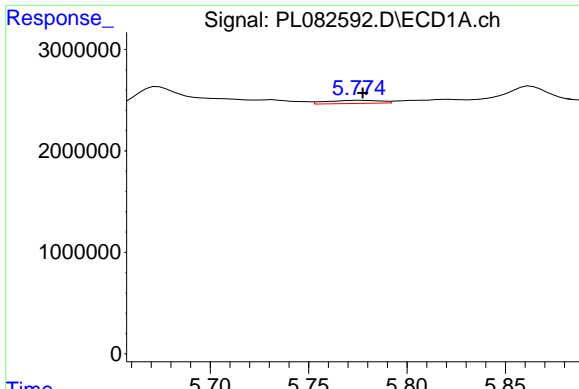
#25 Chlordane-3

R.T.: 5.674 min
 Delta R.T.: -0.024 min
 Response: 4128450
 Conc: 9.56 ng/ml



#25 Chlordane-3

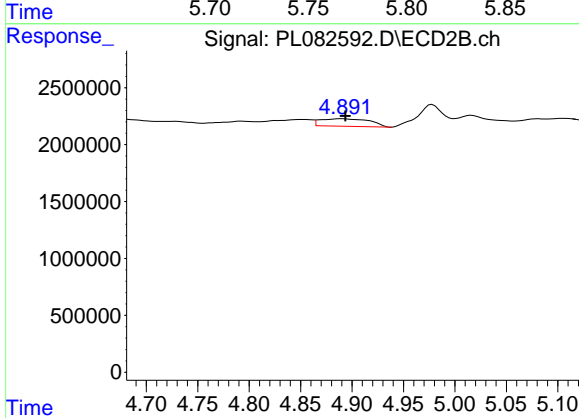
R.T.: 4.852 min
 Delta R.T.: 0.018 min
 Response: 1386817
 Conc: 4.88 ng/ml



#26 Chlordane-4

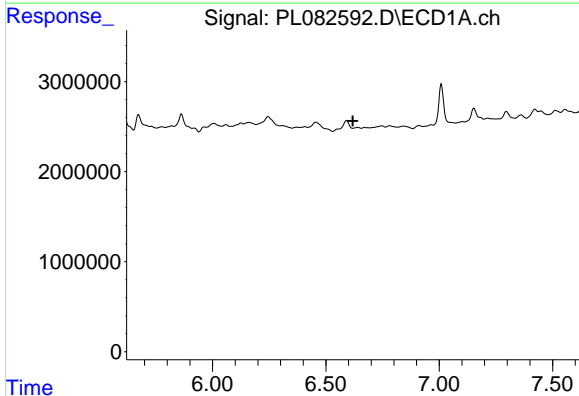
R.T.: 5.776 min
 Delta R.T.: -0.001 min
 Response: 576043
 Conc: 1.11 ng/ml

Instrument :
 ECD_L
 ClientSampleId :



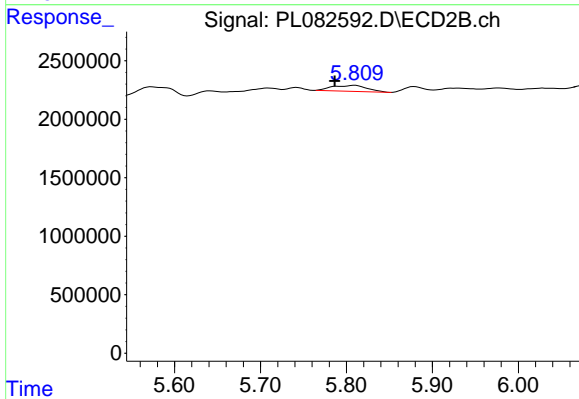
#26 Chlordane-4

R.T.: 4.890 min
 Delta R.T.: -0.003 min
 Response: 2201475
 Conc: 7.38 ng/ml



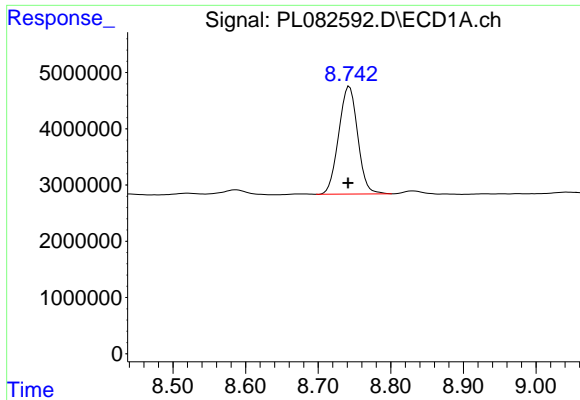
#27 Chlordane-5

R.T.: 0.000 min
 Exp R.T. : 6.619 min
 Response: 0
 Conc: N.D.



#27 Chlordane-5

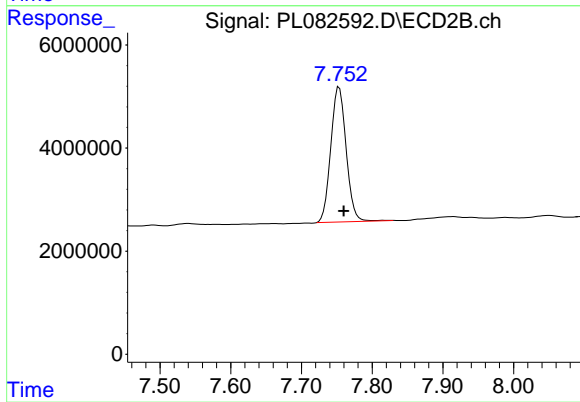
R.T.: 5.810 min
 Delta R.T.: 0.024 min
 Response: 1442661
 Conc: 14.61 ng/ml



#28 Decachlorobiphenyl

R.T.: 8.743 min
Delta R.T.: 0.002 min
Response: 34857767
Conc: 18.26 ng/ml

Instrument :
ECD_L
ClientSampleId :



#28 Decachlorobiphenyl

R.T.: 7.753 min
Delta R.T.: -0.007 min
Response: 39564579
Conc: 17.33 ng/ml