

Data Path : Z:\pestpcbsrv\HPCHEM1\ECD_L\Data\PL051024\
 Data File : PL089480.D
 Signal(s) : Signal #1: ECD1A.ch Signal #2: ECD2B.ch
 Acq On : 10 May 2024 23:04
 Operator : AR\AJ
 Sample : P2422-01
 Misc :
 ALS Vial : 34 Sample Multiplier: 1

Instrument :
 ECD_L
 ClientSampleId :
 WCS-TP-D

Integration File signal 1: autoint1.e
 Integration File signal 2: autoint2.e
 Quant Time: May 11 07:06:47 2024
 Quant Method : Z:\pestpcbsrv\HPCHEM1\ECD_L\methods\PL042624.M
 Quant Title : GC Extractables
 QLast Update : Fri Apr 26 19:27:30 2024
 Response via : Initial Calibration
 Integrator: ChemStation

Volume Inj. : 1 µl
 Signal #1 Phase : ZB-MR2 Signal #2 Phase: ZB-MR1
 Signal #1 Info : 30M x 0.32mm x0.2 Signal #2 Info : 30M x 0.32mm x0.5µm

Compound	RT#1	RT#2	Resp#1	Resp#2	ng/ml	ng/ml

System Monitoring Compounds						
1) SA Tetrachlo...	3.551	2.797	36758488	23332361	18.254	18.185
28) SA Decachlor...	9.066	7.948	18322781	19110391	13.097	14.206

Target Compounds

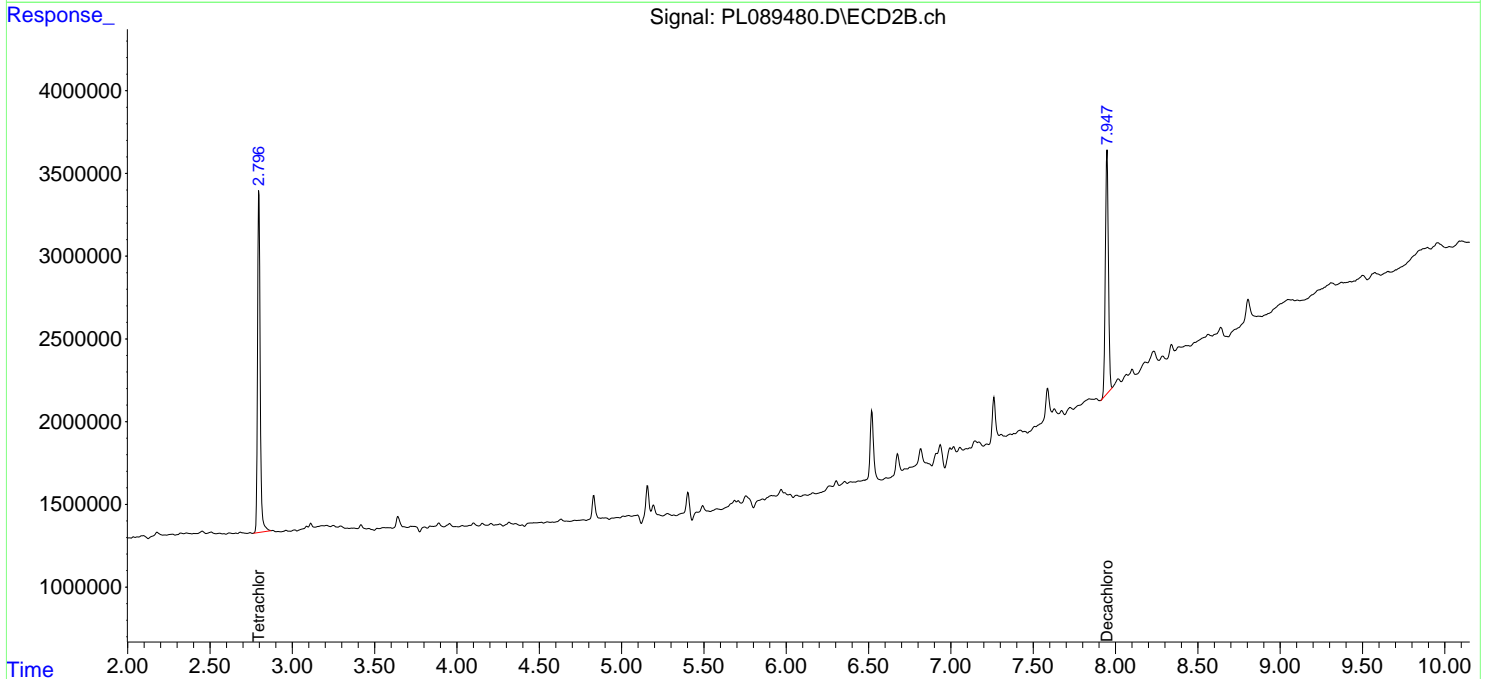
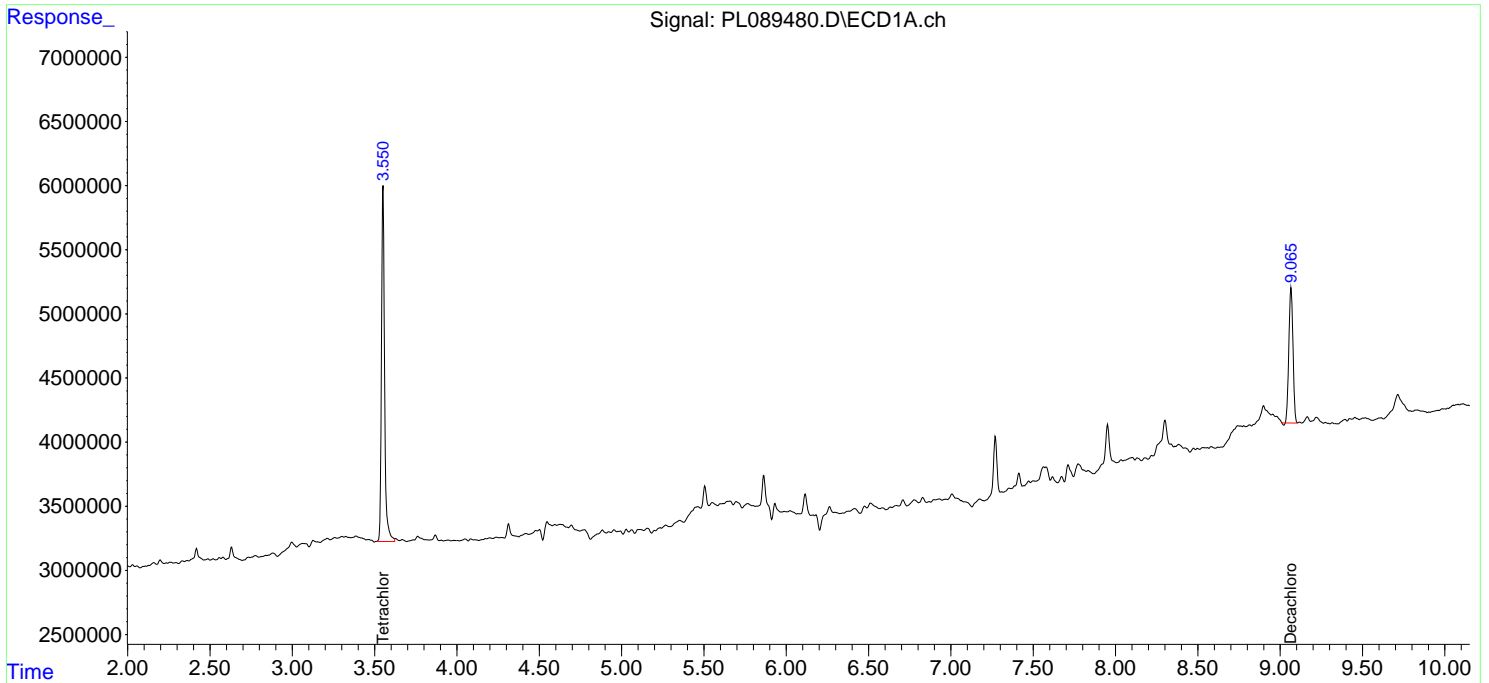
(f)=RT Delta > 1/2 Window (#)=Amounts differ by > 25% (m)=manual int.

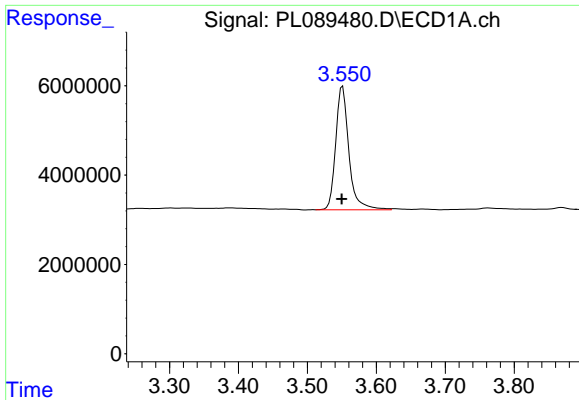
Data Path : Z:\pestpcbsrv\HPCHEM1\ECD_L\Data\PL051024\
 Data File : PL089480.D
 Signal(s) : Signal #1: ECD1A.ch Signal #2: ECD2B.ch
 Acq On : 10 May 2024 23:04
 Operator : AR\AJ
 Sample : P2422-01
 Misc :
 ALS Vial : 34 Sample Multiplier: 1

Instrument :
 ECD_L
 ClientSampleId :
 WCS-TP-D

Integration File signal 1: autoint1.e
 Integration File signal 2: autoint2.e
 Quant Time: May 11 07:06:47 2024
 Quant Method : Z:\pestpcbsrv\HPCHEM1\ECD_L\methods\PL042624.M
 Quant Title : GC Extractables
 QLast Update : Fri Apr 26 19:27:30 2024
 Response via : Initial Calibration
 Integrator: ChemStation

Volume Inj. : 1 µl
 Signal #1 Phase : ZB-MR2 Signal #2 Phase: ZB-MR1
 Signal #1 Info : 30M x 0.32mm x0.2 Signal #2 Info : 30M x 0.32mm x0.5µm

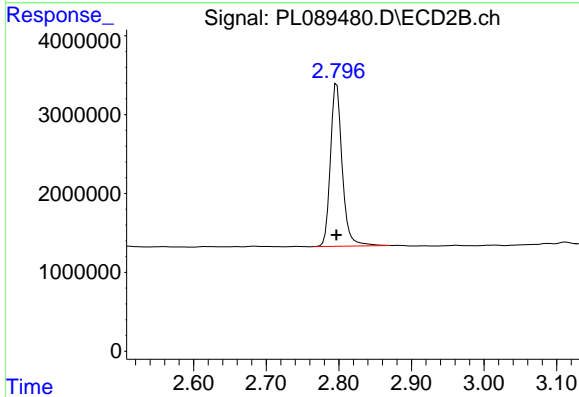




#1 Tetrachloro-m-xylene

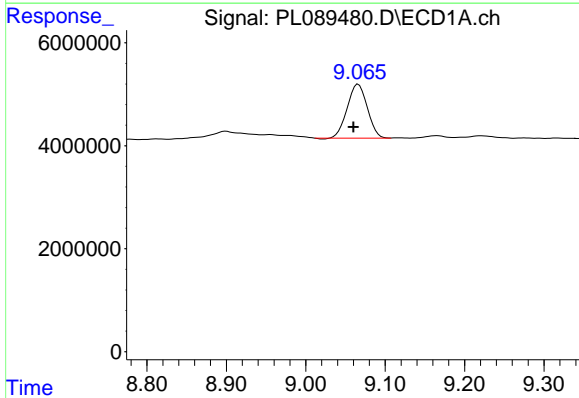
R.T.: 3.551 min
 Delta R.T.: 0.001 min
 Response: 36758488
 Conc: 18.25 ng/ml

Instrument :
 ECD_L
 ClientSampleId :
 WCS-TP-D



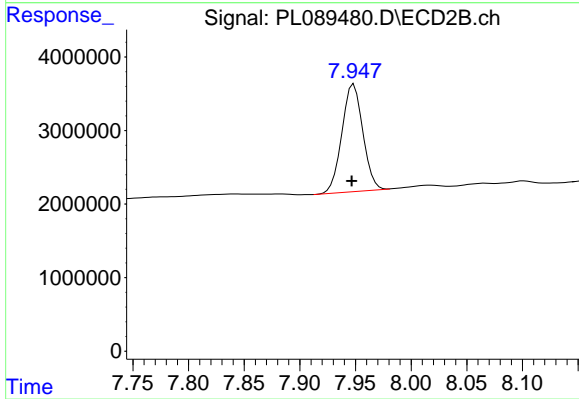
#1 Tetrachloro-m-xylene

R.T.: 2.797 min
 Delta R.T.: 0.000 min
 Response: 23332361
 Conc: 18.19 ng/ml



#28 Decachlorobiphenyl

R.T.: 9.066 min
 Delta R.T.: 0.006 min
 Response: 18322781
 Conc: 13.10 ng/ml



#28 Decachlorobiphenyl

R.T.: 7.948 min
 Delta R.T.: 0.002 min
 Response: 19110391
 Conc: 14.21 ng/ml