

Data Path : Z:\pestpcbsrv\HPCHEM1\ECD_L\Data\PL051123\
 Data File : PL082666.D
 Signal(s) : Signal #1: ECD1A.ch Signal #2: ECD2B.ch
 Acq On : 11 May 2023 18:51
 Operator : AR\AJ
 Sample : PB152676TB
 Misc :
 ALS Vial : 27 Sample Multiplier: 1

Instrument :
 ECD_L
 ClientSampleId :

Integration File signal 1: autoint1.e
 Integration File signal 2: autoint2.e
 Quant Time: May 11 21:41:26 2023
 Quant Method : Z:\pestpcbsrv\HPCHEM1\ECD_L\methods\PL042023.M
 Quant Title : GC Extractables
 QLast Update : Fri Apr 21 03:12:31 2023
 Response via : Initial Calibration
 Integrator: ChemStation

Volume Inj. : 1 µl
 Signal #1 Phase : ZB-MR2 Signal #2 Phase: ZB-MR1
 Signal #1 Info : 30M x 0.32mm x0.2 Signal #2 Info : 30M x 0.32mm x0.5µm

Compound	RT#1	RT#2	Resp#1	Resp#2	ng/ml	ng/ml

System Monitoring Compounds						
1) SA Tetrachlo...	3.318	2.641	46101481	40938955	17.259	17.671
28) SA Decachlor...	8.735	7.748	38119756	42767565	19.968	18.737
Target Compounds						
2) A alpha-BHC	0.000	3.120f	0	36960	N.D.	0.011 #
3) MA gamma-BHC...	0.000	3.478	0	868466	N.D.	0.270 #
4) MA Heptachlor	4.702f	3.813	509871	178684	0.140	0.052 #
5) MB Aldrin	5.013	4.055f	63235	2570043	0.019	0.816 #
6) B beta-BHC	4.323f	0.000	533424	0	0.313	N.D. #
7) B delta-BHC	0.000	4.009	0	1778541	N.D.	0.580 #
8) B Heptachlo...	5.436	4.576	4461094	80467	1.462	0.028 #
9) A Endosulfan I	5.811	0.000	5169486	0	1.864	N.D. #
10) B gamma-Chl...	5.697	4.845	4264316	472359	1.418	0.163 #
11) B alpha-Chl...	5.767	4.894	3296482	551567	1.104	0.190 #
13) MA Dieldrin	6.088	0.000	294101	0	0.107	N.D. #
14) MA Endrin	0.000	5.506f	0	4048524	N.D.	1.655 #
15) B Endosulfa...	6.533	5.803f	409869	33598	0.168	0.015 #
17) MA 4,4'-DDT	6.779	5.889	550806	31317	0.241	0.015 #
18) B Endrin al...	6.674	5.954	383529	136150	0.204	0.073 #
19) B Endosulfa...	0.000	6.215f	0	102978	N.D.	0.044 #
23) Chlordane-1	0.000	3.635	0	559332	N.D.	6.307 #
24) Chlordane-2	4.998	4.188f	103587	8057962	0.870	71.855 #
25) Chlordane-3	5.697	4.845	4264316	472359	9.878	1.663 #
26) Chlordane-4	5.767	4.894	3296482	551567	6.340	1.848 #
27) Chlordane-5	6.595f	5.803f	198014	33598	2.109	0.340 #

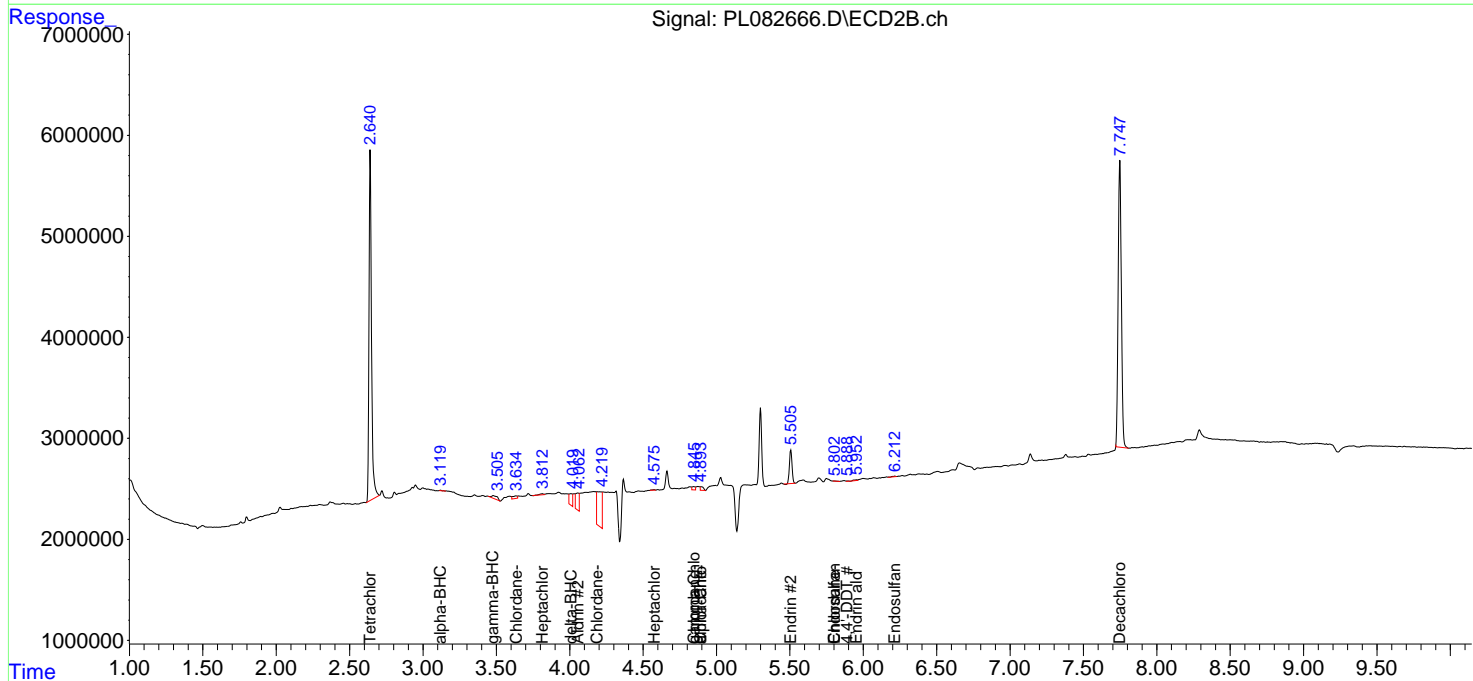
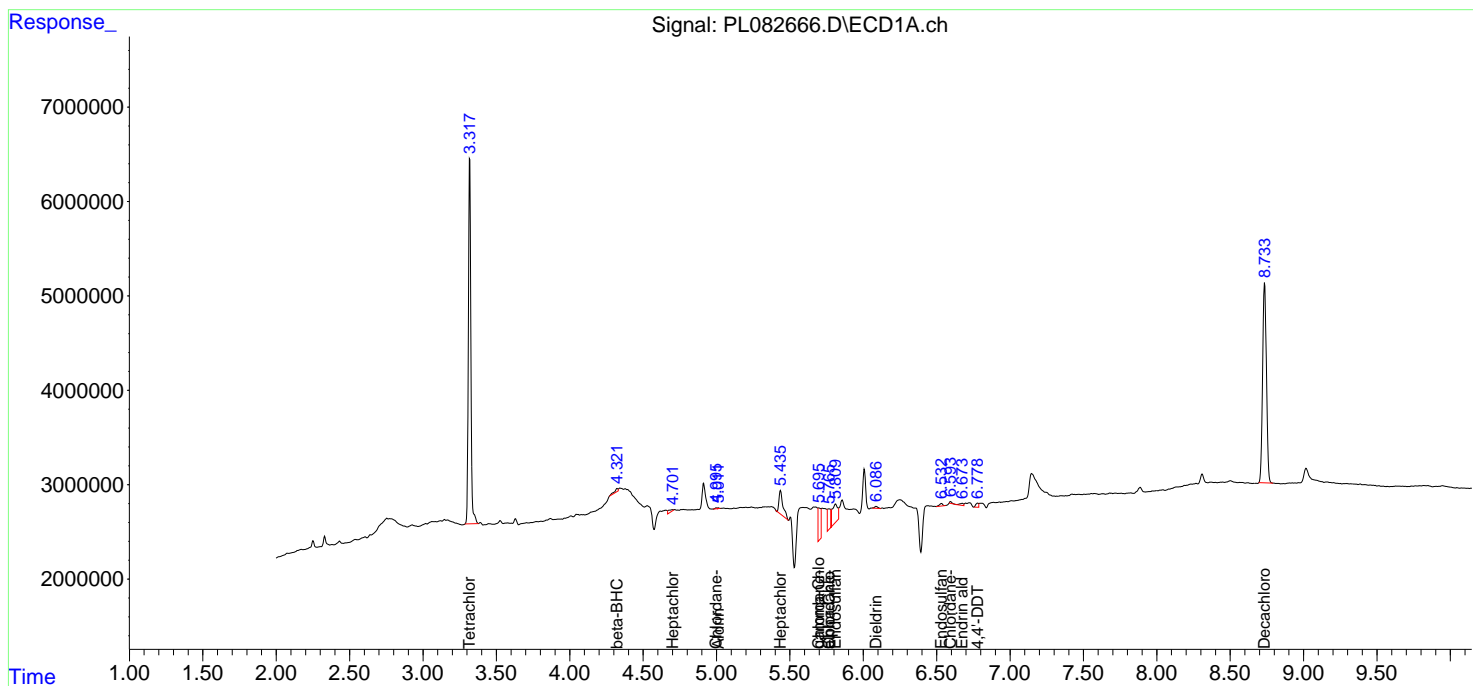
(f)=RT Delta > 1/2 Window (#)=Amounts differ by > 25% (m)=manual int.

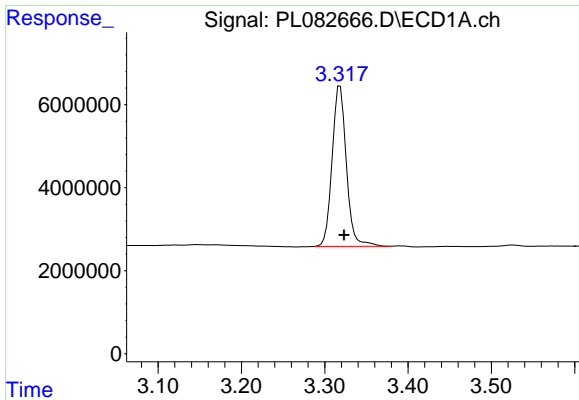
Data Path : Z:\pestpcbsrv\HPCHEM1\ECD_L\Data\PL051123\
 Data File : PL082666.D
 Signal(s) : Signal #1: ECD1A.ch Signal #2: ECD2B.ch
 Acq On : 11 May 2023 18:51
 Operator : AR\AJ
 Sample : PB152676TB
 Misc :
 ALS Vial : 27 Sample Multiplier: 1

Instrument :
 ECD_L
 ClientSampleId :

Integration File signal 1: autoint1.e
 Integration File signal 2: autoint2.e
 Quant Time: May 11 21:41:26 2023
 Quant Method : Z:\pestpcbsrv\HPCHEM1\ECD_L\methods\PL042023.M
 Quant Title : GC Extractables
 QLast Update : Fri Apr 21 03:12:31 2023
 Response via : Initial Calibration
 Integrator: ChemStation

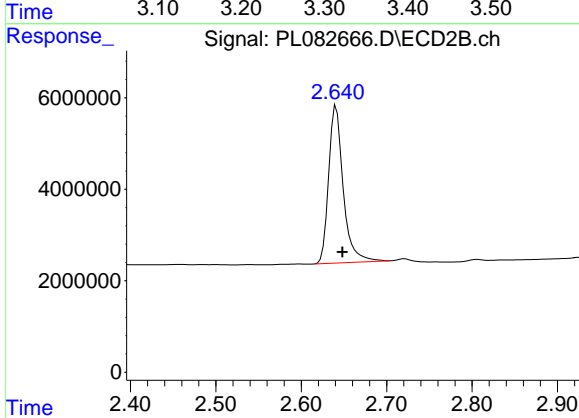
Volume Inj. : 1 µl
 Signal #1 Phase : ZB-MR2 Signal #2 Phase: ZB-MR1
 Signal #1 Info : 30M x 0.32mm x0.2 Signal #2 Info : 30M x 0.32mm x0.5µm



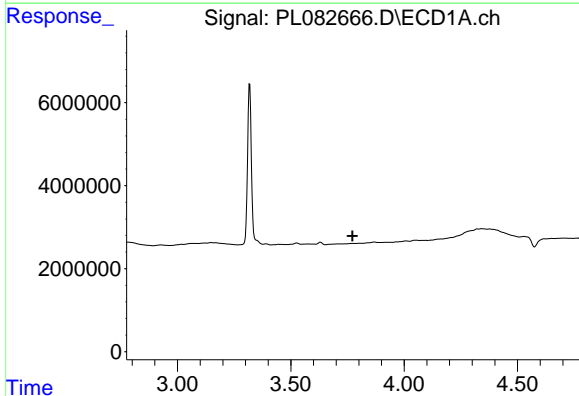


#1 Tetrachloro-m-xylene
 R.T.: 3.318 min
 Delta R.T.: -0.005 min
 Response: 46101481
 Conc: 17.26 ng/ml

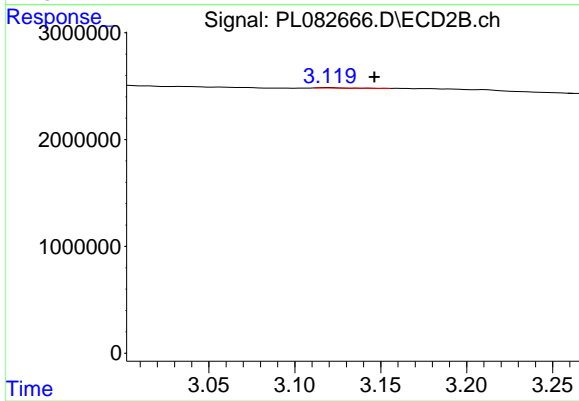
Instrument :
 ECD_L
 ClientSampleId :



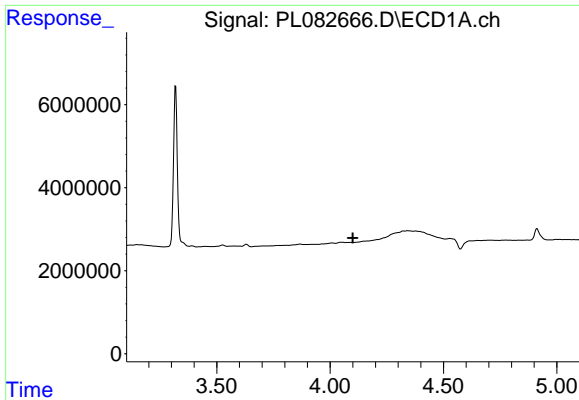
#1 Tetrachloro-m-xylene
 R.T.: 2.641 min
 Delta R.T.: -0.007 min
 Response: 40938955
 Conc: 17.67 ng/ml



#2 alpha-BHC
 R.T.: 0.000 min
 Exp R.T. : 3.772 min
 Response: 0
 Conc: N.D.



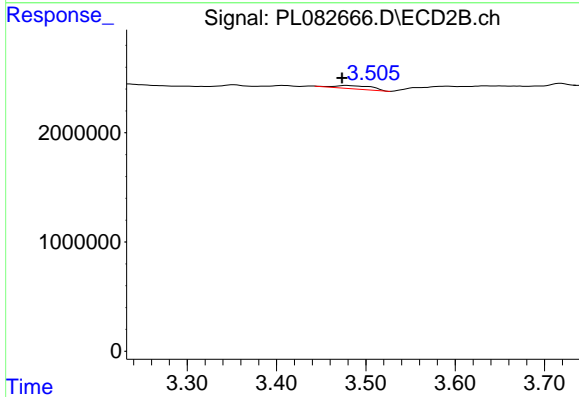
#2 alpha-BHC
 R.T.: 3.120 min
 Delta R.T.: -0.027 min
 Response: 36960
 Conc: 0.01 ng/ml



#3 gamma-BHC (Lindane)

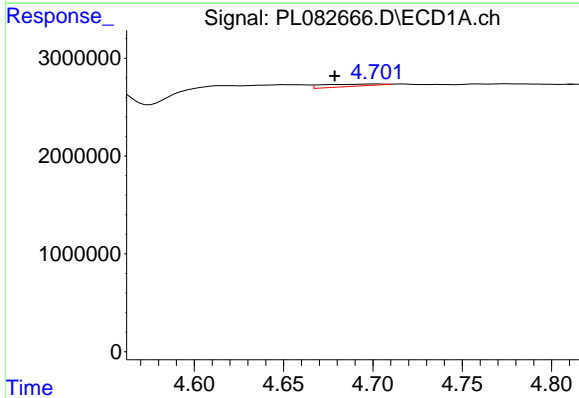
R.T.: 0.000 min
 Exp R.T.: 4.100 min
 Response: 0
 Conc: N.D.

Instrument :
 ECD_L
 ClientSampleId :



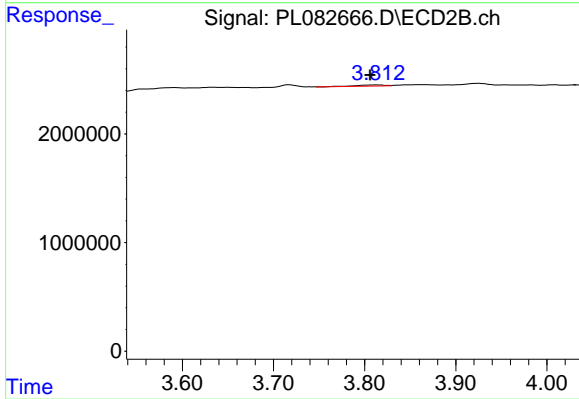
#3 gamma-BHC (Lindane)

R.T.: 3.478 min
 Delta R.T.: 0.005 min
 Response: 868466
 Conc: 0.27 ng/ml



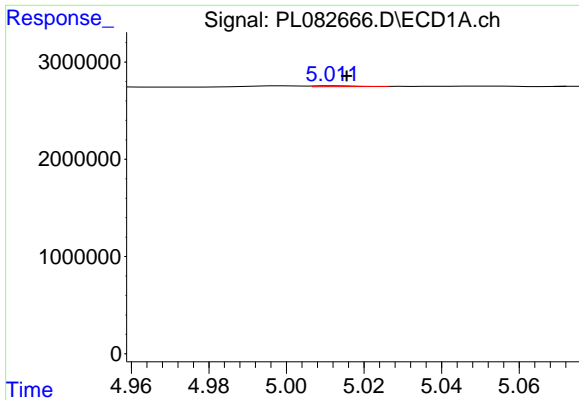
#4 Heptachlor

R.T.: 4.702 min
 Delta R.T.: 0.023 min
 Response: 509871
 Conc: 0.14 ng/ml



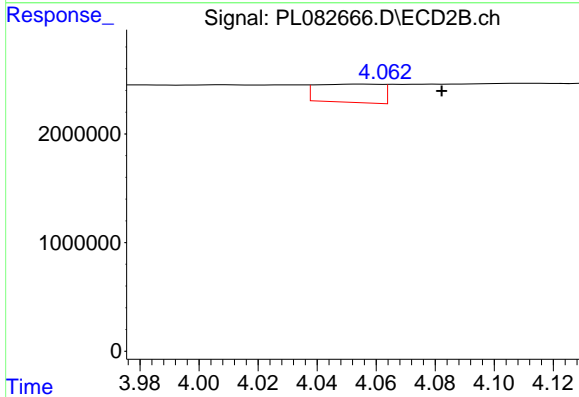
#4 Heptachlor

R.T.: 3.813 min
 Delta R.T.: 0.007 min
 Response: 178684
 Conc: 0.05 ng/ml

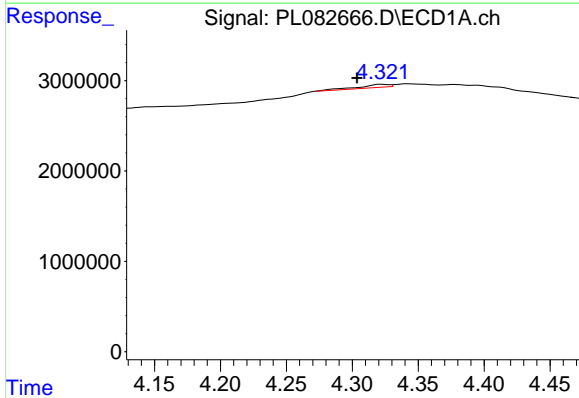


#5 Aldrin
 R.T.: 5.013 min
 Delta R.T.: -0.003 min
 Response: 63235
 Conc: 0.02 ng/ml

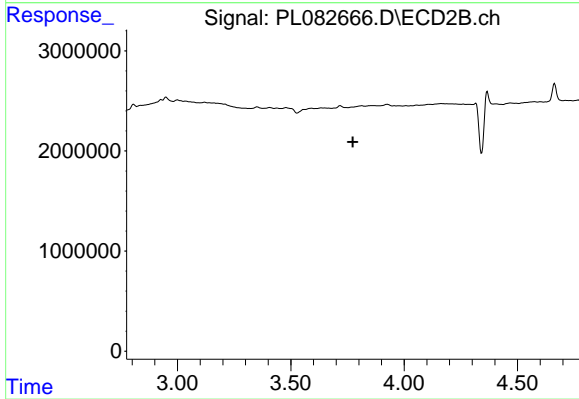
Instrument :
 ECD_L
 ClientSampleId :



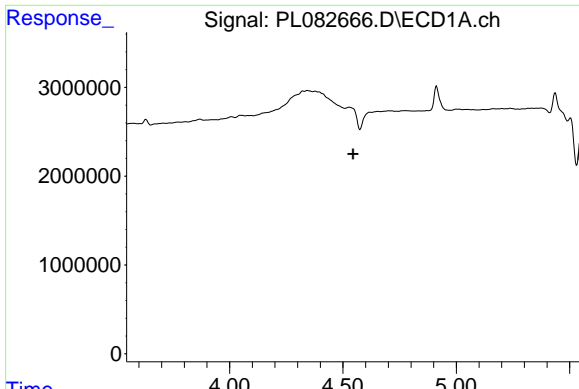
#5 Aldrin
 R.T.: 4.055 min
 Delta R.T.: -0.027 min
 Response: 2570043
 Conc: 0.82 ng/ml



#6 beta-BHC
 R.T.: 4.323 min
 Delta R.T.: 0.019 min
 Response: 533424
 Conc: 0.31 ng/ml



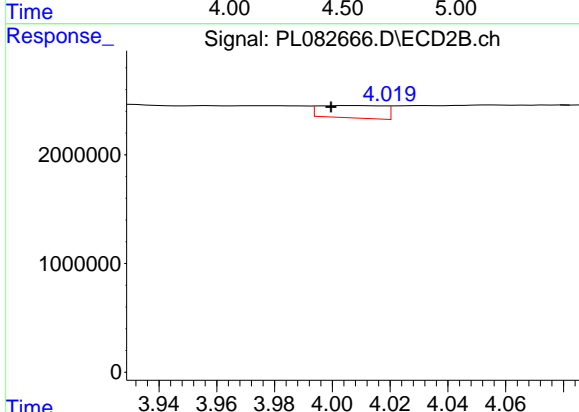
#6 beta-BHC
 R.T.: 0.000 min
 Exp R.T. : 3.773 min
 Response: 0
 Conc: N.D.



#7 delta-BHC

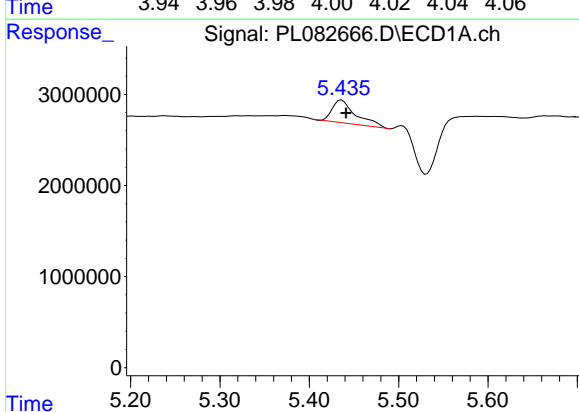
R.T.: 0.000 min
 Exp R.T.: 4.545 min
 Response: 0
 Conc: N.D.

Instrument :
 ECD_L
 ClientSampleId :



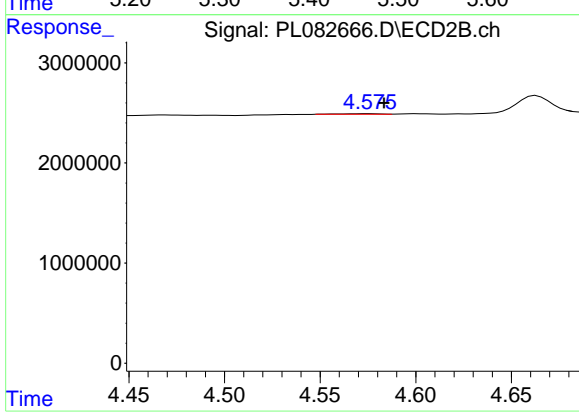
#7 delta-BHC

R.T.: 4.009 min
 Delta R.T.: 0.010 min
 Response: 1778541
 Conc: 0.58 ng/ml



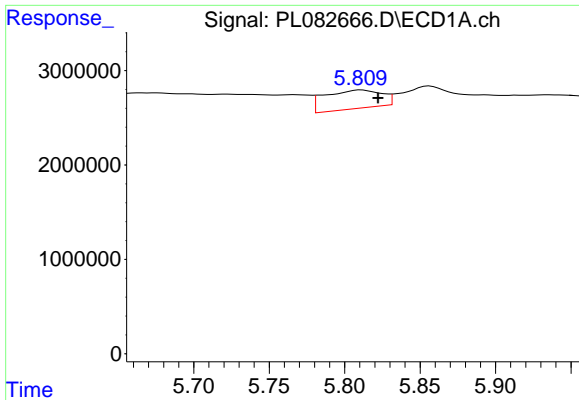
#8 Heptachlor epoxide

R.T.: 5.436 min
 Delta R.T.: -0.005 min
 Response: 4461094
 Conc: 1.46 ng/ml



#8 Heptachlor epoxide

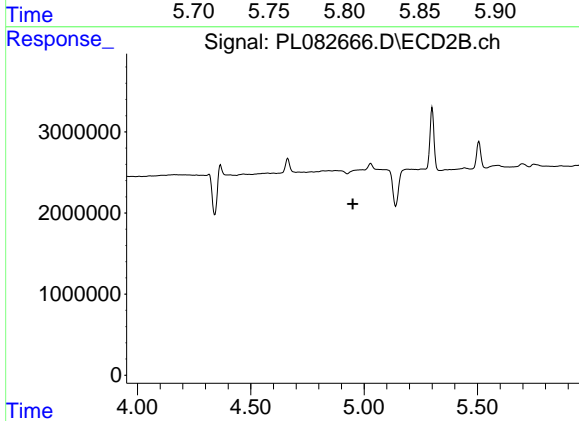
R.T.: 4.576 min
 Delta R.T.: -0.008 min
 Response: 80467
 Conc: 0.03 ng/ml



#9 Endosulfan I

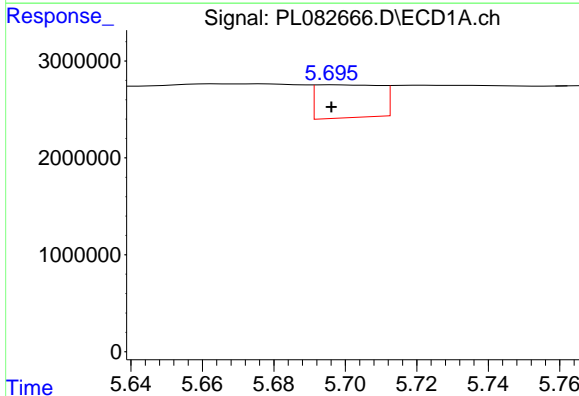
R.T.: 5.811 min
 Delta R.T.: -0.011 min
 Response: 5169486
 Conc: 1.86 ng/ml

Instrument :
 ECD_L
 ClientSampleId :



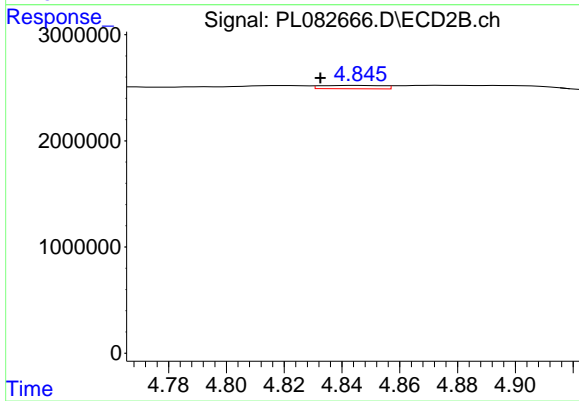
#9 Endosulfan I

R.T.: 0.000 min
 Exp R.T. : 4.950 min
 Response: 0
 Conc: N.D.



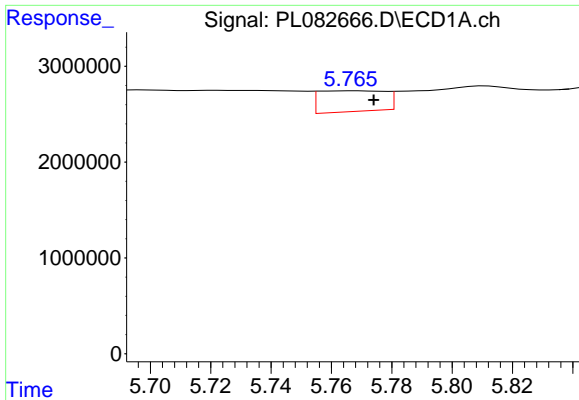
#10 gamma-Chlordane

R.T.: 5.697 min
 Delta R.T.: 0.000 min
 Response: 4264316
 Conc: 1.42 ng/ml



#10 gamma-Chlordane

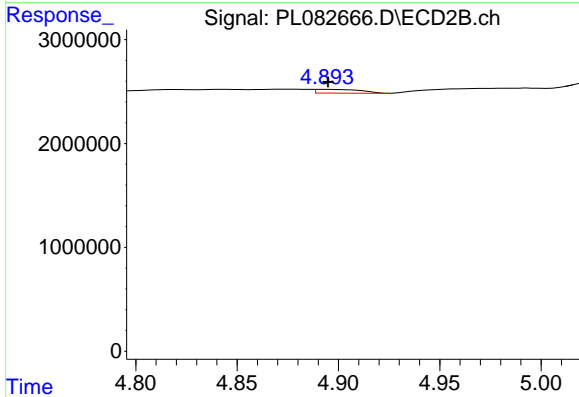
R.T.: 4.845 min
 Delta R.T.: 0.013 min
 Response: 472359
 Conc: 0.16 ng/ml



#11 alpha-Chlordane

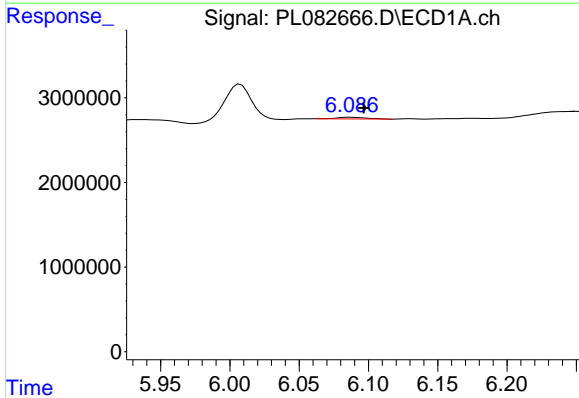
R.T.: 5.767 min
 Delta R.T.: -0.007 min
 Response: 3296482
 Conc: 1.10 ng/ml

Instrument :
 ECD_L
 ClientSampleId :



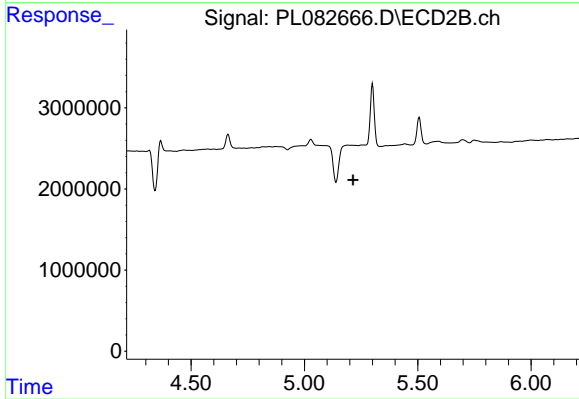
#11 alpha-Chlordane

R.T.: 4.894 min
 Delta R.T.: 0.000 min
 Response: 551567
 Conc: 0.19 ng/ml



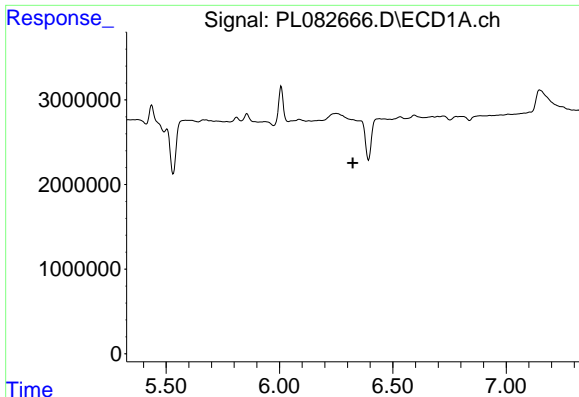
#13 Dieldrin

R.T.: 6.088 min
 Delta R.T.: -0.009 min
 Response: 294101
 Conc: 0.11 ng/ml



#13 Dieldrin

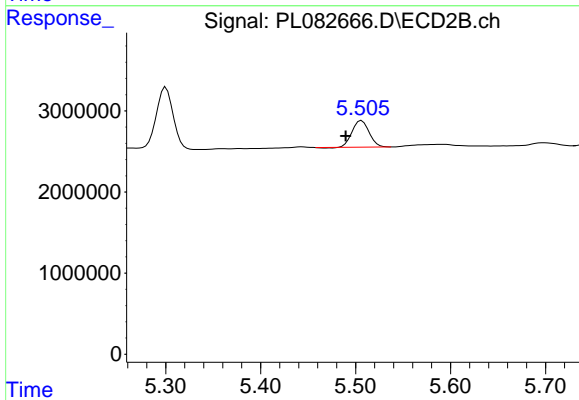
R.T.: 0.000 min
 Exp R.T. : 5.215 min
 Response: 0
 Conc: N.D.



#14 Endrin

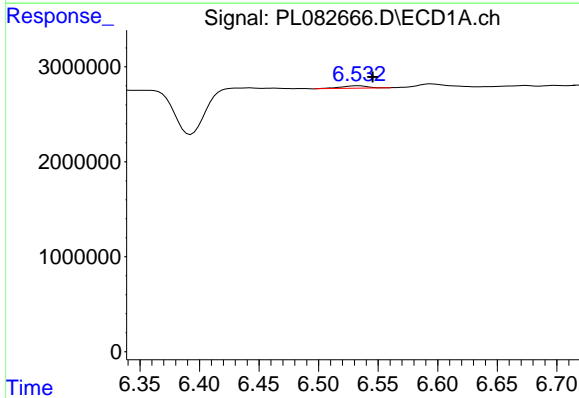
R.T.: 0.000 min
 Exp R.T.: 6.324 min
 Response: 0
 Conc: N.D.

Instrument :
 ECD_L
 ClientSampleId :



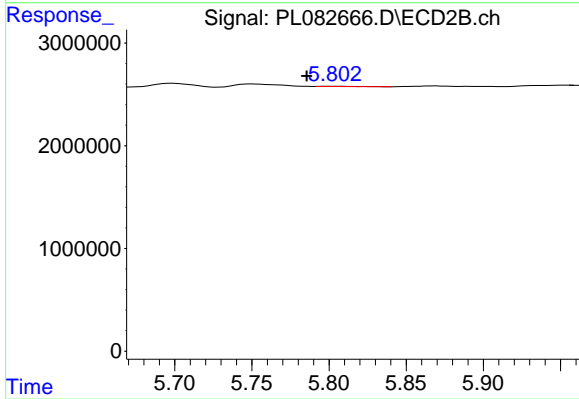
#14 Endrin

R.T.: 5.506 min
 Delta R.T.: 0.017 min
 Response: 4048524
 Conc: 1.66 ng/ml



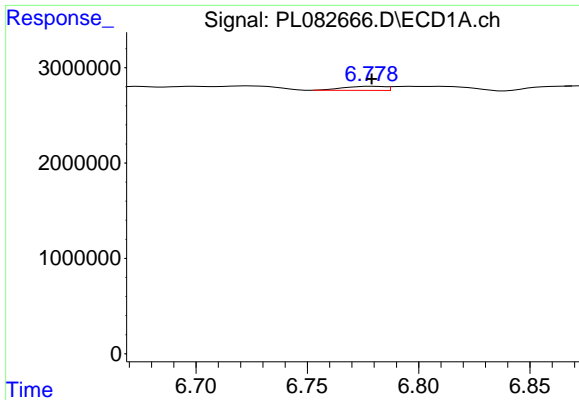
#15 Endosulfan II

R.T.: 6.533 min
 Delta R.T.: -0.012 min
 Response: 409869
 Conc: 0.17 ng/ml



#15 Endosulfan II

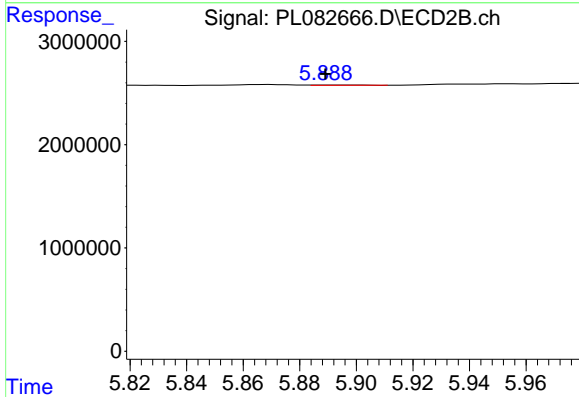
R.T.: 5.803 min
 Delta R.T.: 0.017 min
 Response: 33598
 Conc: 0.01 ng/ml



#17 4,4'-DDT

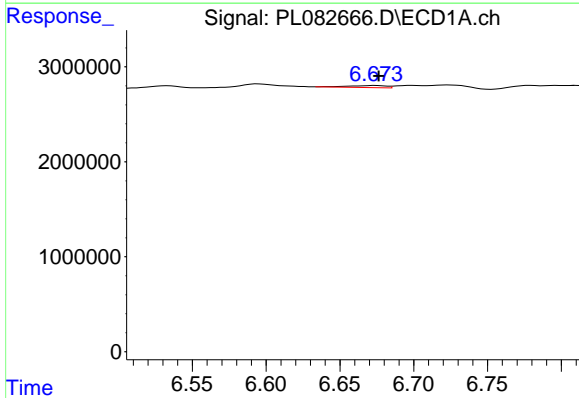
R.T.: 6.779 min
 Delta R.T.: 0.000 min
 Response: 550806
 Conc: 0.24 ng/ml

Instrument :
 ECD_L
 ClientSampleId :



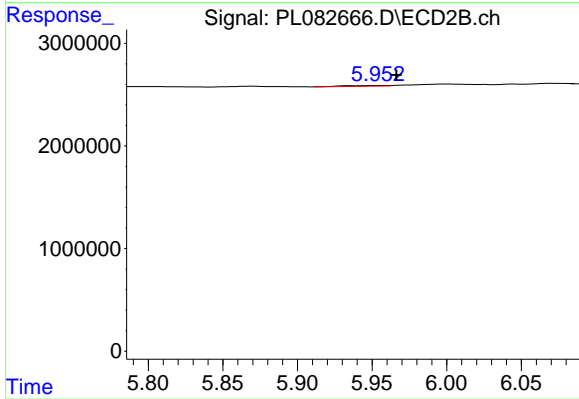
#17 4,4'-DDT

R.T.: 5.889 min
 Delta R.T.: 0.000 min
 Response: 31317
 Conc: 0.01 ng/ml



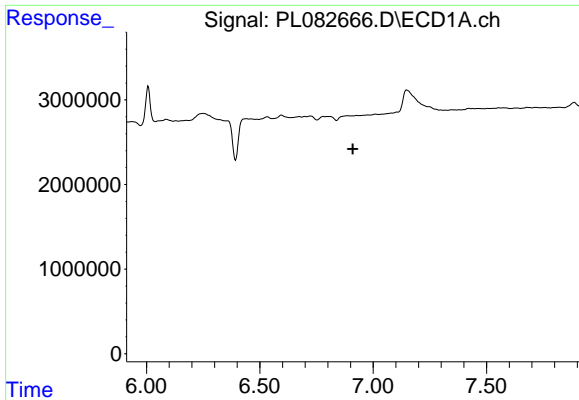
#18 Endrin aldehyde

R.T.: 6.674 min
 Delta R.T.: -0.002 min
 Response: 383529
 Conc: 0.20 ng/ml



#18 Endrin aldehyde

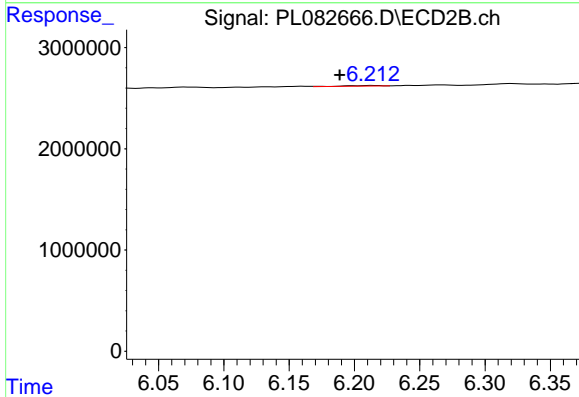
R.T.: 5.954 min
 Delta R.T.: -0.013 min
 Response: 136150
 Conc: 0.07 ng/ml



#19 Endosulfan Sulfate

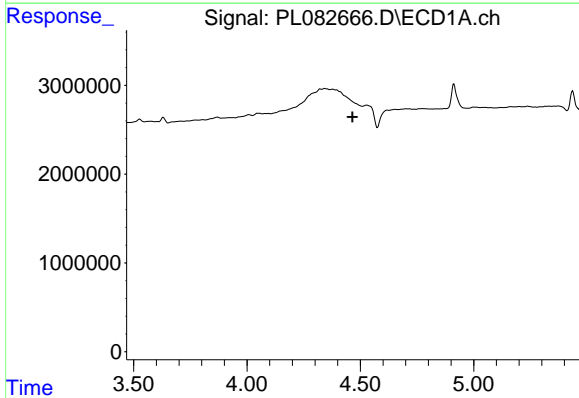
R.T.: 0.000 min
 Exp R.T.: 6.910 min
 Response: 0
 Conc: N.D.

Instrument :
 ECD_L
 ClientSampleId :



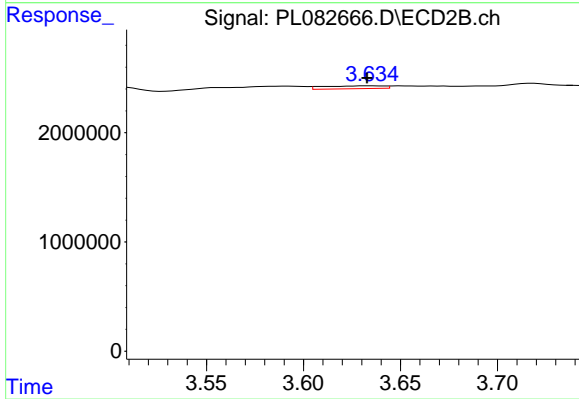
#19 Endosulfan Sulfate

R.T.: 6.215 min
 Delta R.T.: 0.026 min
 Response: 102978
 Conc: 0.04 ng/ml



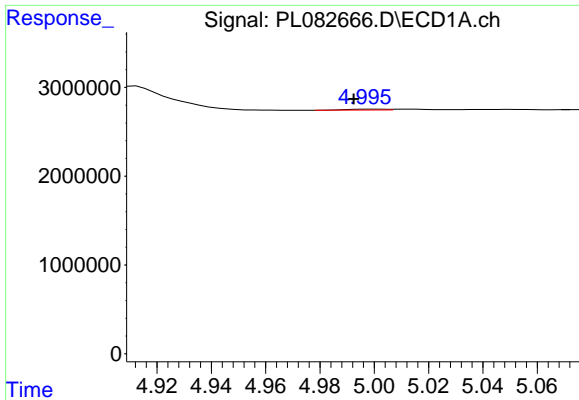
#23 Chlordane-1

R.T.: 0.000 min
 Exp R.T.: 4.466 min
 Response: 0
 Conc: N.D.



#23 Chlordane-1

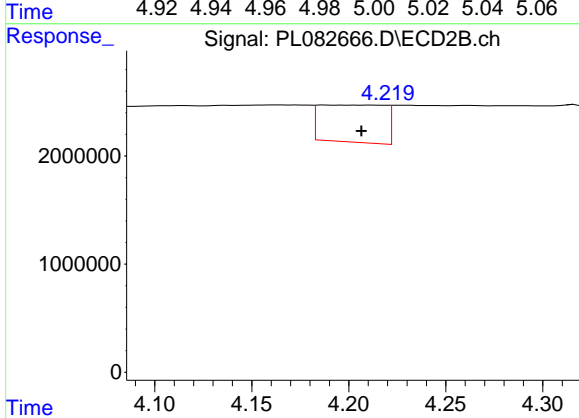
R.T.: 3.635 min
 Delta R.T.: 0.002 min
 Response: 559332
 Conc: 6.31 ng/ml



#24 Chlordane-2

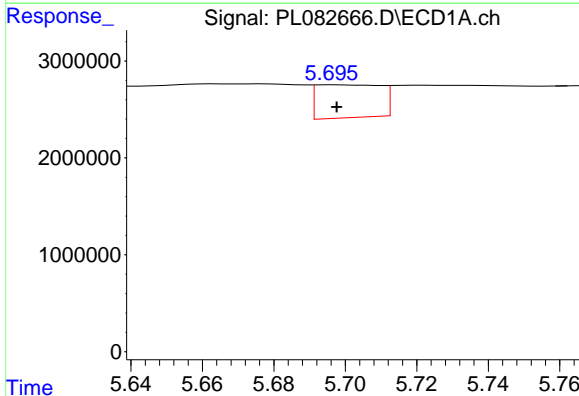
R.T.: 4.998 min
 Delta R.T.: 0.005 min
 Response: 103587
 Conc: 0.87 ng/ml

Instrument :
 ECD_L
 ClientSampleId :



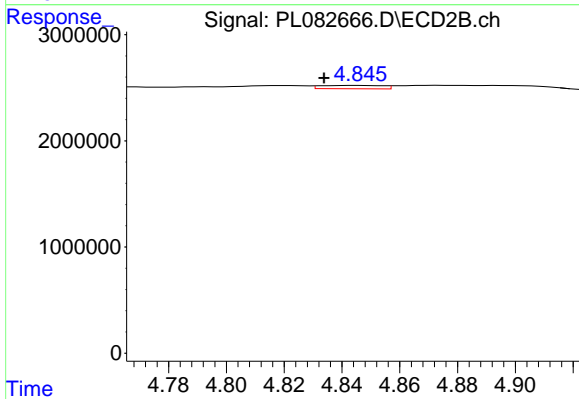
#24 Chlordane-2

R.T.: 4.188 min
 Delta R.T.: -0.019 min
 Response: 8057962
 Conc: 71.85 ng/ml



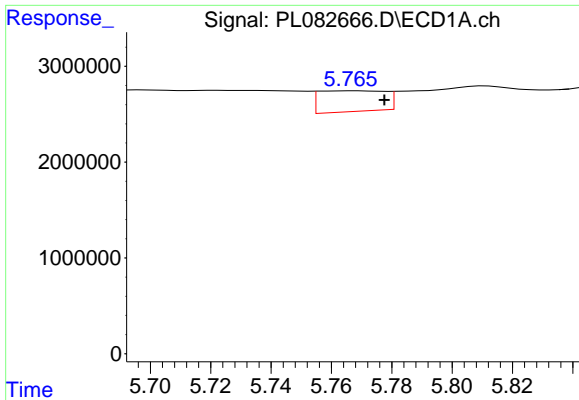
#25 Chlordane-3

R.T.: 5.697 min
 Delta R.T.: 0.000 min
 Response: 4264316
 Conc: 9.88 ng/ml



#25 Chlordane-3

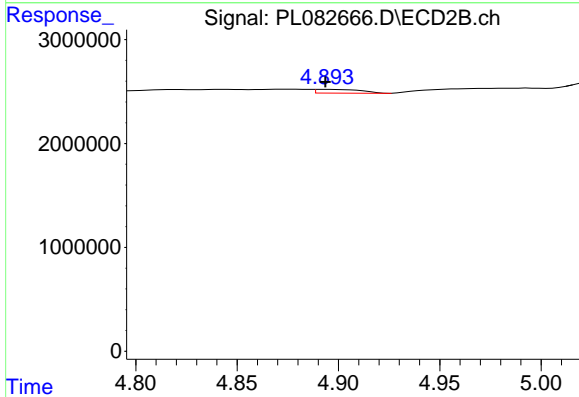
R.T.: 4.845 min
 Delta R.T.: 0.011 min
 Response: 472359
 Conc: 1.66 ng/ml



#26 Chlordane-4

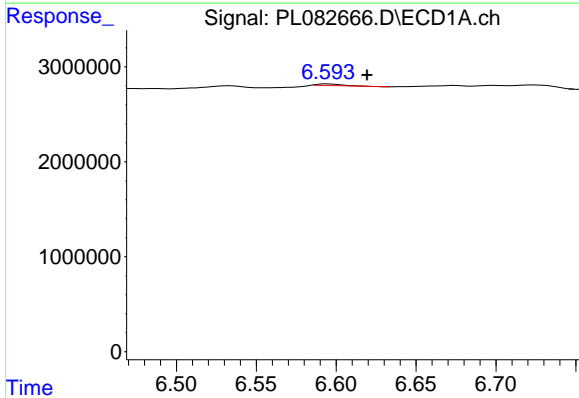
R.T.: 5.767 min
 Delta R.T.: -0.010 min
 Response: 3296482
 Conc: 6.34 ng/ml

Instrument :
 ECD_L
 ClientSampleId :



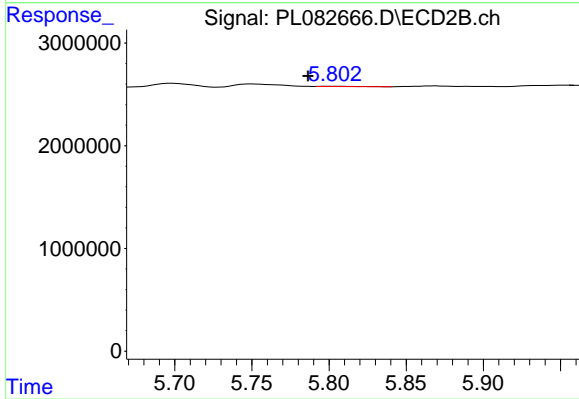
#26 Chlordane-4

R.T.: 4.894 min
 Delta R.T.: 0.000 min
 Response: 551567
 Conc: 1.85 ng/ml



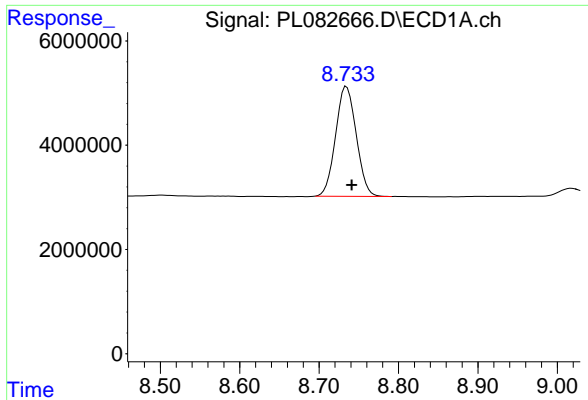
#27 Chlordane-5

R.T.: 6.595 min
 Delta R.T.: -0.024 min
 Response: 198014
 Conc: 2.11 ng/ml



#27 Chlordane-5

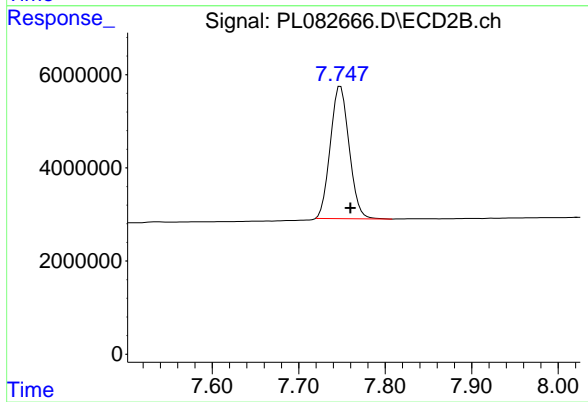
R.T.: 5.803 min
 Delta R.T.: 0.017 min
 Response: 33598
 Conc: 0.34 ng/ml



#28 Decachlorobiphenyl

R.T.: 8.735 min
Delta R.T.: -0.006 min
Response: 38119756
Conc: 19.97 ng/ml

Instrument :
ECD_L
ClientSampleId :



#28 Decachlorobiphenyl

R.T.: 7.748 min
Delta R.T.: -0.011 min
Response: 42767565
Conc: 18.74 ng/ml