

Data Path : Z:\pestpcbsrv\HPCHEM1\ECD_L\Data\PL051123\
 Data File : PL082670.D
 Signal(s) : Signal #1: ECD1A.ch Signal #2: ECD2B.ch
 Acq On : 11 May 2023 19:47
 Operator : AR\AJ
 Sample : PCHLORCCC500
 Misc :
 ALS Vial : 17 Sample Multiplier: 1

Instrument :
 ECD_L
 ClientSampleId :
 PCHLORCCC500

Integration File signal 1: autoint1.e
 Integration File signal 2: autoint2.e
 Quant Time: May 11 21:44:27 2023
 Quant Method : Z:\pestpcbsrv\HPCHEM1\ECD_L\methods\PL042023.M
 Quant Title : GC Extractables
 QLast Update : Fri Apr 21 03:12:31 2023
 Response via : Initial Calibration
 Integrator: ChemStation

Volume Inj. : 1 µl
 Signal #1 Phase : ZB-MR2 Signal #2 Phase: ZB-MR1
 Signal #1 Info : 30M x 0.32mm x0.2 Signal #2 Info : 30M x 0.32mm x0.5µm

Compound	RT#1	RT#2	Resp#1	Resp#2	ng/ml	ng/ml
System Monitoring Compounds						
1) SA Tetrachlo...	3.319	2.640	119.9E6	130.8E6	44.883	56.451 #
28) SA Decachlor...	8.735	7.749	88835353	100.6E6	46.533	44.068
Target Compounds						
2) A alpha-BHC	3.778	3.122f	3850620	154733	0.967	0.045 #
3) MA gamma-BHC...	4.117f	0.000	629054	0	0.168	N.D. #
4) MA Heptachlor	4.674	3.796	71713913	64481170	19.627	18.836
5) MB Aldrin	4.988f	4.092	59738169	5617030	18.116	1.783 #
6) B beta-BHC	4.320f	3.796f	4622905	64481170	2.711	47.260 #
7) B delta-BHC	0.000	3.980f	0	5855662	N.D.	1.909 #
8) B Heptachlo...	5.422f	0.000	25972342	0	8.515	N.D. #
9) A Endosulfan I	0.000	4.932f	0	12806703	N.D.	4.798 #
10) B gamma-Chl...	5.692	4.824	218.7E6	147.6E6	72.717	50.856 #
11) B alpha-Chl...	5.773	4.884	263.0E6	152.3E6	88.133	52.450 #
12) B 4,4'-DDE	0.000	5.069f	0	340173	N.D.	0.148 #
13) MA Dieldrin	6.090	5.230f	8593131	-3079644	3.114	N.D. #
14) MA Endrin	6.345f	5.490	-481132	6896121	N.D.	2.819
15) B Endosulfa...	6.558	5.776	1148614	46316265	0.472	20.547 #
17) MA 4,4'-DDT	6.768	5.881	1535588	764594	0.671	0.362 #
18) B Endrin al...	6.671	5.961	3797405	1033076	2.015	0.552 #
19) B Endosulfa...	6.901	6.182	663684	1403391	0.280	0.596 #
23) Chlordane-1	4.460	3.624	53864744	45031490	487.280	507.768
24) Chlordane-2	4.988	4.197	59738169	56182022	501.780	500.987
25) Chlordane-3	5.692	4.824	218.7E6	147.6E6	506.486	519.439
26) Chlordane-4	5.773	4.884	263.0E6	152.3E6	505.935	510.222
27) Chlordane-5	6.614	5.776	42583865	46316265	453.514	469.204

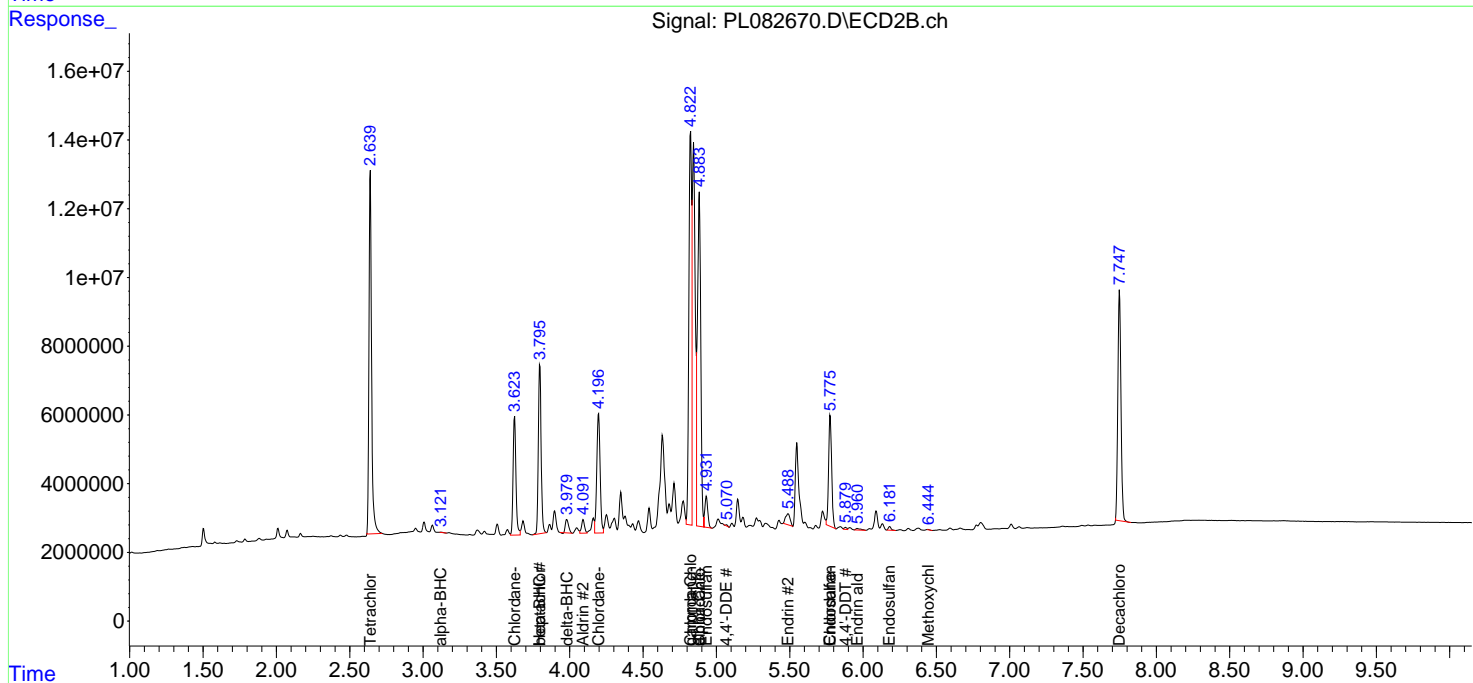
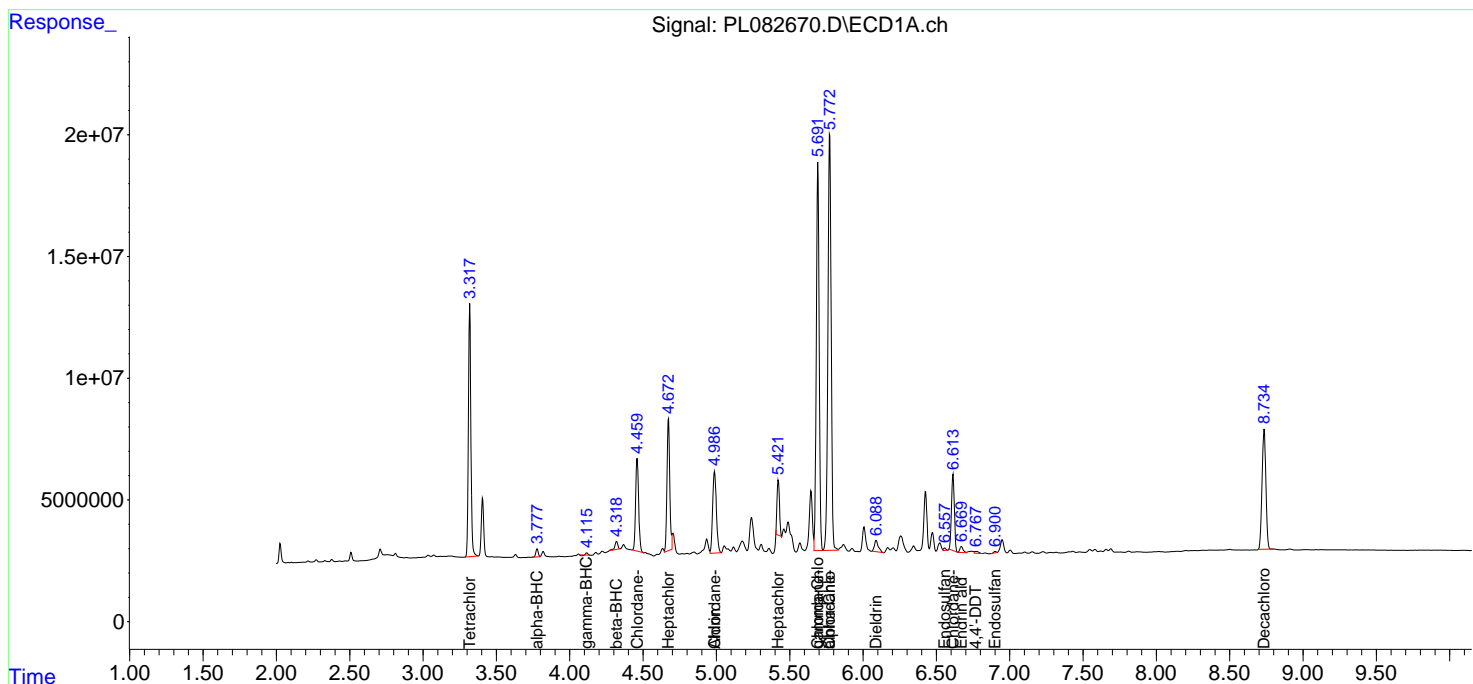
(f)=RT Delta > 1/2 Window (#)=Amounts differ by > 25% (m)=manual int.

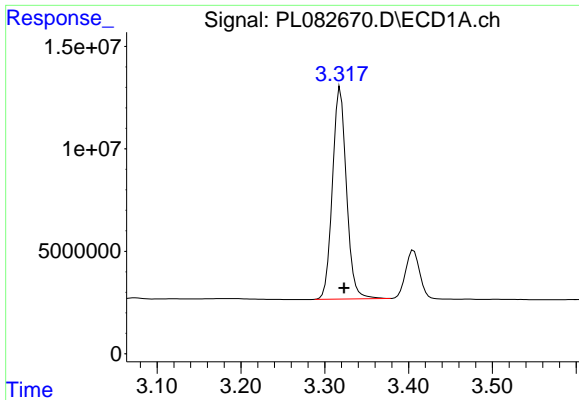
Data Path : Z:\pestpcbsrv\HPCHEM1\ECD_L\Data\PL051123\
 Data File : PL082670.D
 Signal(s) : Signal #1: ECD1A.ch Signal #2: ECD2B.ch
 Acq On : 11 May 2023 19:47
 Operator : AR\AJ
 Sample : PCHLORCCC500
 Misc :
 ALS Vial : 17 Sample Multiplier: 1

Instrument :
 ECD_L
 ClientSampleId :
 PCHLORCCC500

Integration File signal 1: autoint1.e
 Integration File signal 2: autoint2.e
 Quant Time: May 11 21:44:27 2023
 Quant Method : Z:\pestpcbsrv\HPCHEM1\ECD_L\methods\PL042023.M
 Quant Title : GC Extractables
 QLast Update : Fri Apr 21 03:12:31 2023
 Response via : Initial Calibration
 Integrator: ChemStation

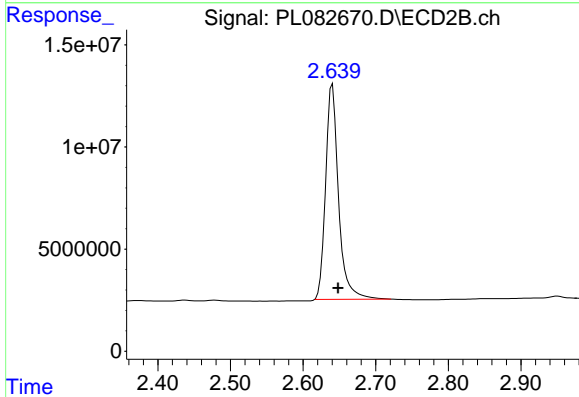
Volume Inj. : 1 µl
 Signal #1 Phase : ZB-MR2 Signal #2 Phase: ZB-MR1
 Signal #1 Info : 30M x 0.32mm x0.2 Signal #2 Info : 30M x 0.32mm x0.5µm



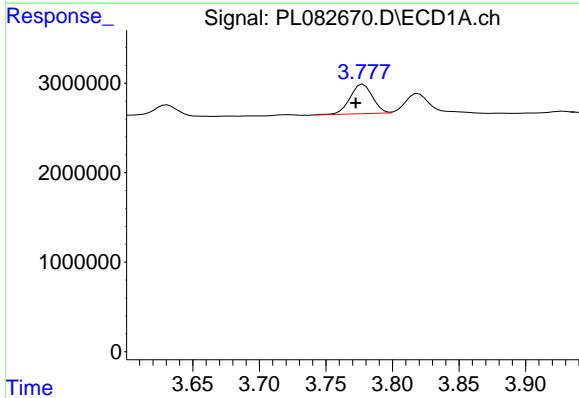


#1 Tetrachloro-m-xylene
 R.T.: 3.319 min
 Delta R.T.: -0.004 min
 Response: 119892958
 Conc: 44.88 ng/ml

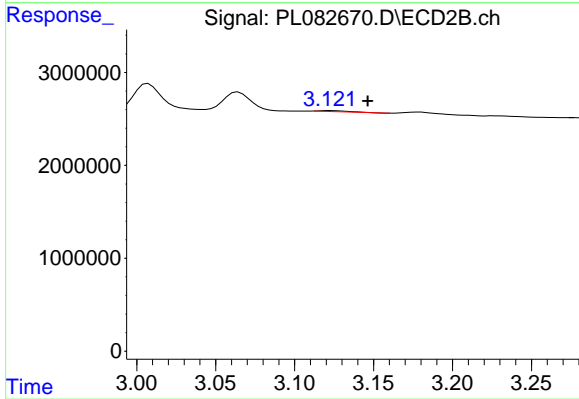
Instrument :
 ECD_L
 ClientSampleId :
 PCHLORCCC500



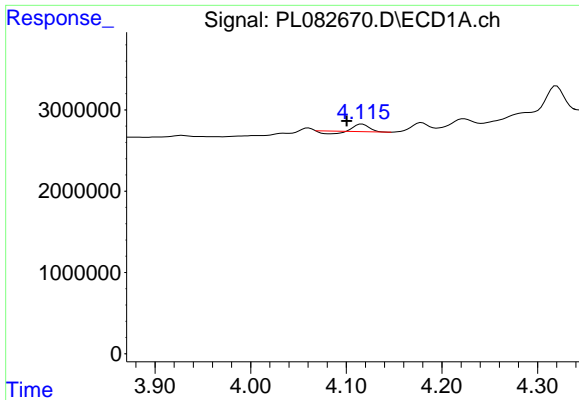
#1 Tetrachloro-m-xylene
 R.T.: 2.640 min
 Delta R.T.: -0.008 min
 Response: 130782526
 Conc: 56.45 ng/ml



#2 alpha-BHC
 R.T.: 3.778 min
 Delta R.T.: 0.006 min
 Response: 3850620
 Conc: 0.97 ng/ml

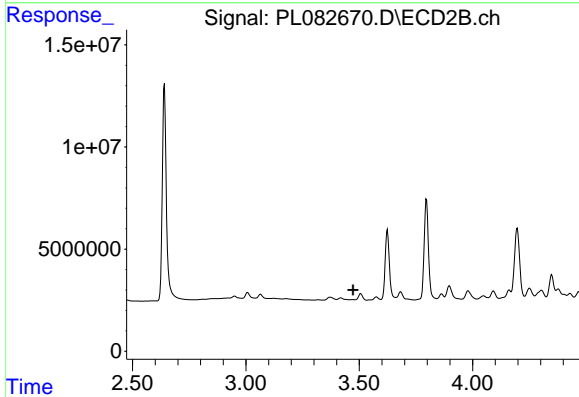


#2 alpha-BHC
 R.T.: 3.122 min
 Delta R.T.: -0.024 min
 Response: 154733
 Conc: 0.05 ng/ml

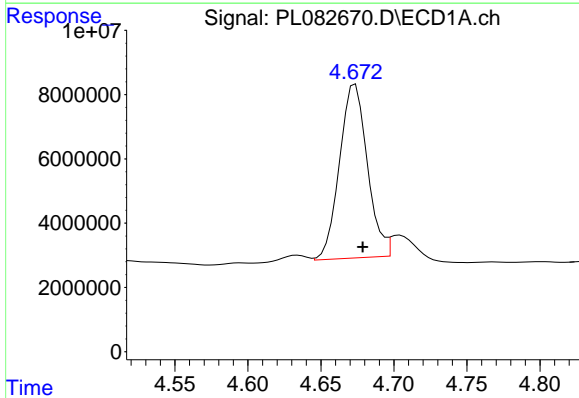


#3 gamma-BHC (Lindane)
 R.T.: 4.117 min
 Delta R.T.: 0.016 min
 Response: 629054
 Conc: 0.17 ng/ml

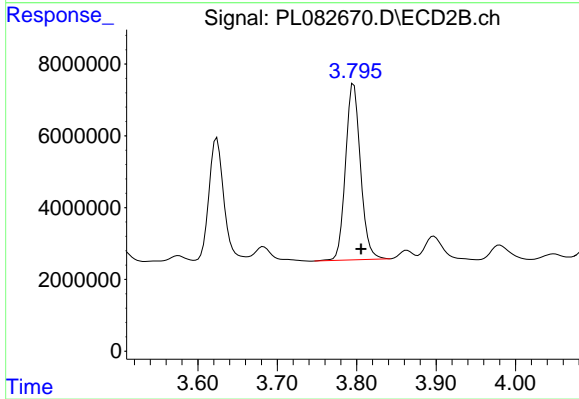
Instrument :
 ECD_L
 ClientSampleId :
 PCHLORCCC500



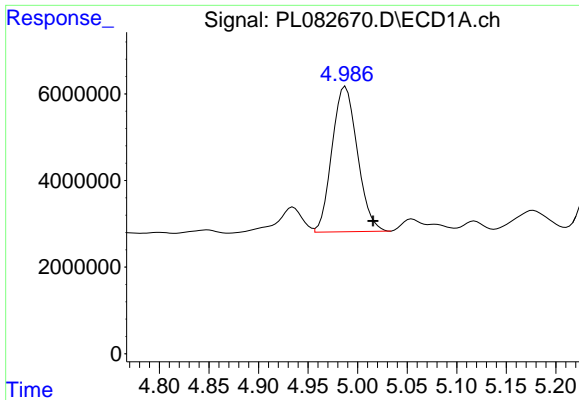
#3 gamma-BHC (Lindane)
 R.T.: 0.000 min
 Exp R.T. : 3.473 min
 Response: 0
 Conc: N.D.



#4 Heptachlor
 R.T.: 4.674 min
 Delta R.T.: -0.005 min
 Response: 71713913
 Conc: 19.63 ng/ml

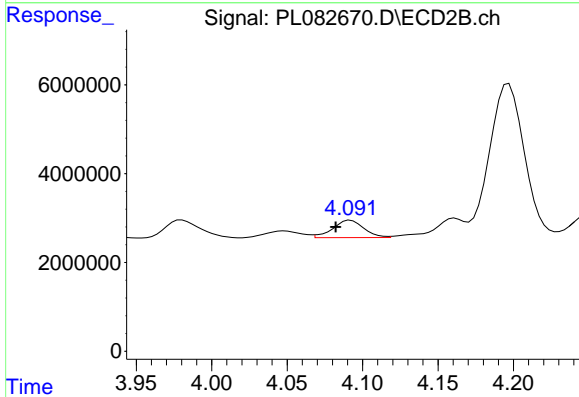


#4 Heptachlor
 R.T.: 3.796 min
 Delta R.T.: -0.009 min
 Response: 64481170
 Conc: 18.84 ng/ml

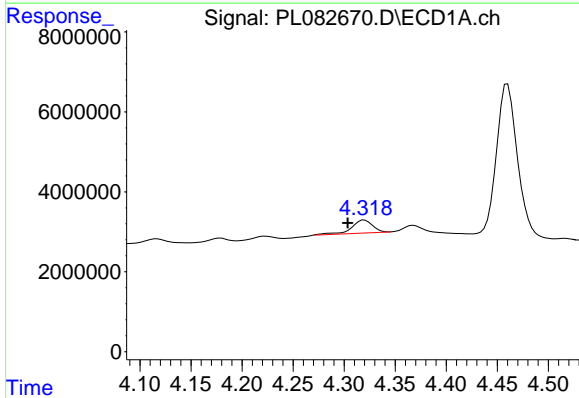


#5 Aldrin
 R.T.: 4.988 min
 Delta R.T.: -0.028 min
 Response: 59738169
 Conc: 18.12 ng/ml

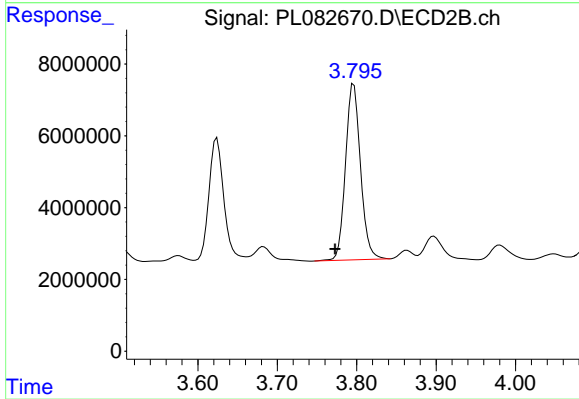
Instrument :
 ECD_L
 ClientSampleId :
 PCHLORCCC500



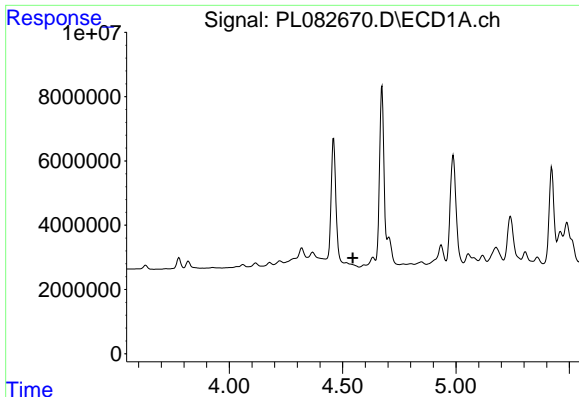
#5 Aldrin
 R.T.: 4.092 min
 Delta R.T.: 0.010 min
 Response: 5617030
 Conc: 1.78 ng/ml



#6 beta-BHC
 R.T.: 4.320 min
 Delta R.T.: 0.016 min
 Response: 4622905
 Conc: 2.71 ng/ml



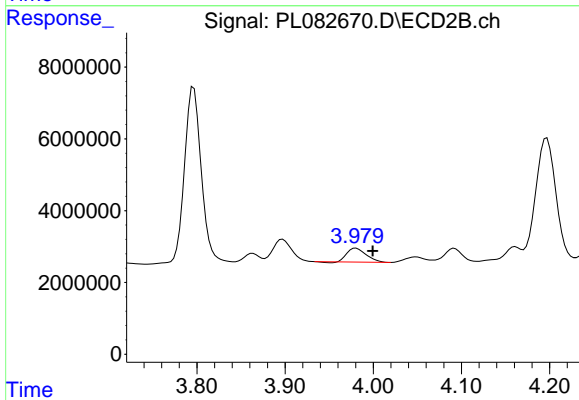
#6 beta-BHC
 R.T.: 3.796 min
 Delta R.T.: 0.023 min
 Response: 64481170
 Conc: 47.26 ng/ml



#7 delta-BHC

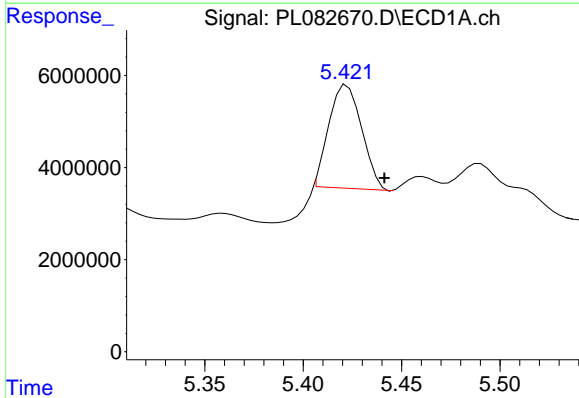
R.T.: 0.000 min
 Exp R.T.: 4.545 min
 Response: 0
 Conc: N.D.

Instrument :
 ECD_L
 ClientSampleId :
 PCHLORCCC500



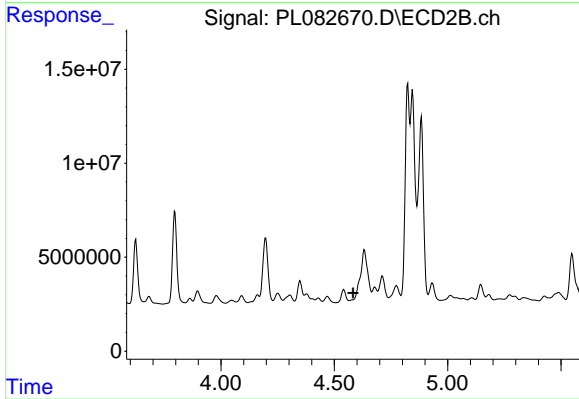
#7 delta-BHC

R.T.: 3.980 min
 Delta R.T.: -0.019 min
 Response: 5855662
 Conc: 1.91 ng/ml



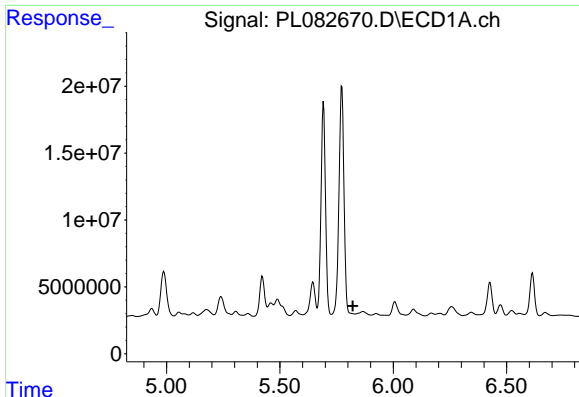
#8 Heptachlor epoxide

R.T.: 5.422 min
 Delta R.T.: -0.019 min
 Response: 25972342
 Conc: 8.51 ng/ml



#8 Heptachlor epoxide

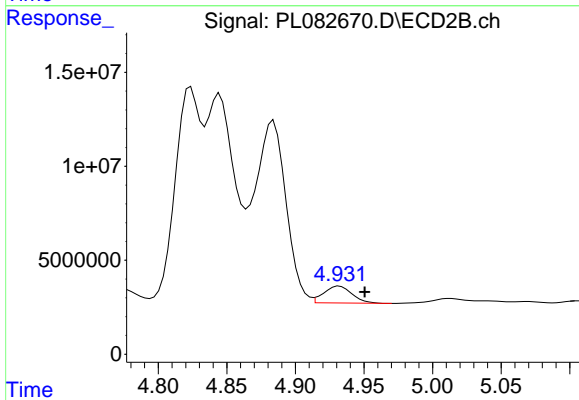
R.T.: 0.000 min
 Exp R.T.: 4.583 min
 Response: 0
 Conc: N.D.



#9 Endosulfan I

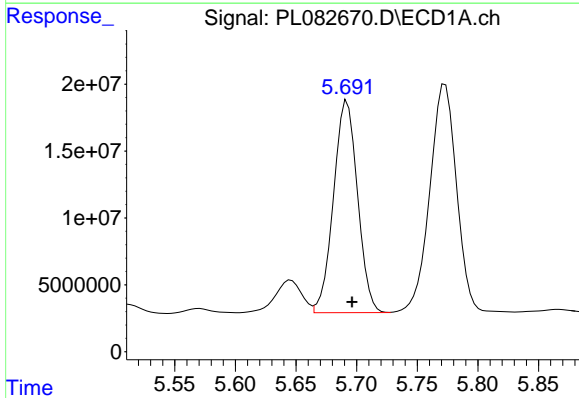
R.T.: 0.000 min
 Exp R.T.: 5.822 min
 Response: 0
 Conc: N.D.

Instrument :
 ECD_L
 ClientSampleId :
 PCHLORCCC500



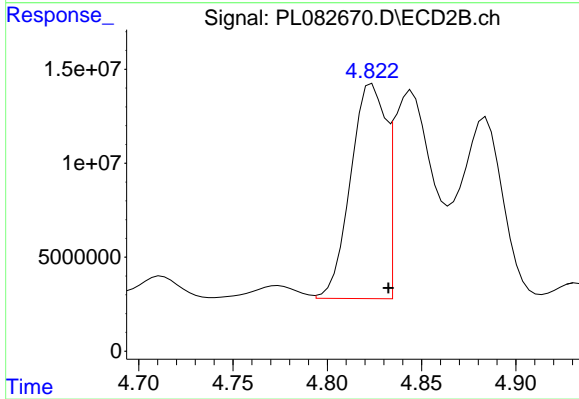
#9 Endosulfan I

R.T.: 4.932 min
 Delta R.T.: -0.018 min
 Response: 12806703
 Conc: 4.80 ng/ml



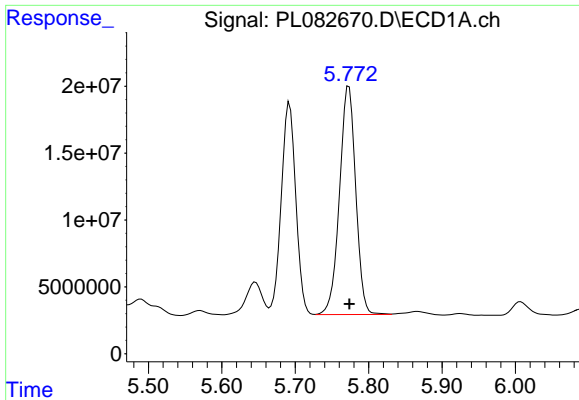
#10 gamma-Chlordane

R.T.: 5.692 min
 Delta R.T.: -0.004 min
 Response: 218651862
 Conc: 72.72 ng/ml



#10 gamma-Chlordane

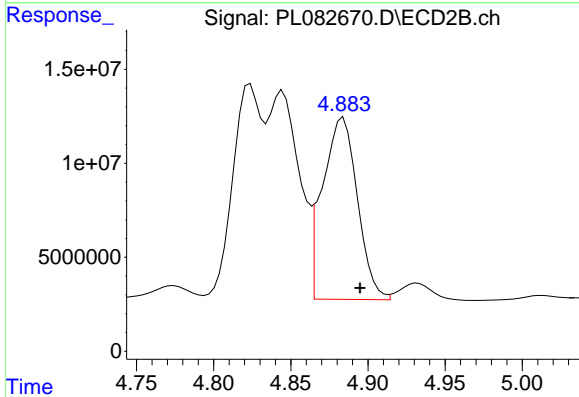
R.T.: 4.824 min
 Delta R.T.: -0.009 min
 Response: 147577731
 Conc: 50.86 ng/ml



#11 alpha-Chlordane

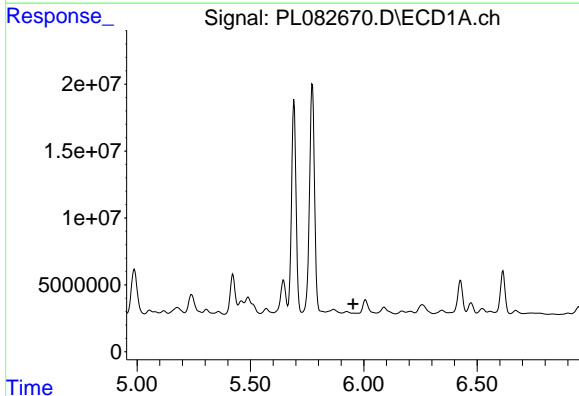
R.T.: 5.773 min
 Delta R.T.: 0.000 min
 Response: 263043001
 Conc: 88.13 ng/ml

Instrument :
 ECD_L
 ClientSampleId :
 PCHLORCCC500



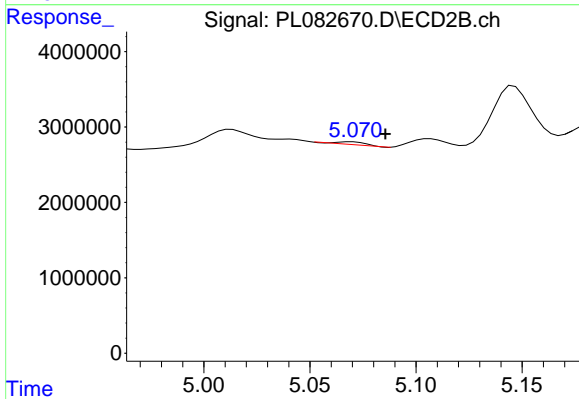
#11 alpha-Chlordane

R.T.: 4.884 min
 Delta R.T.: -0.011 min
 Response: 152253561
 Conc: 52.45 ng/ml



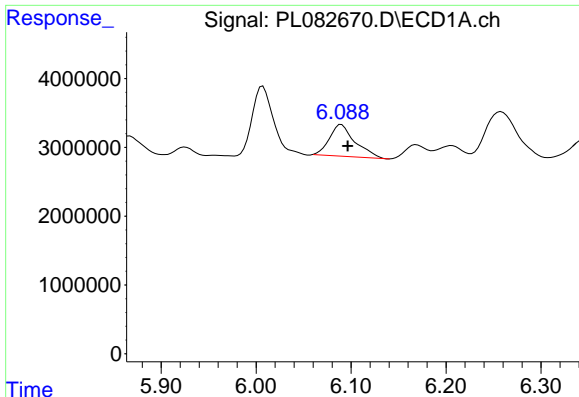
#12 4,4'-DDE

R.T.: 0.000 min
 Exp R.T. : 5.952 min
 Response: 0
 Conc: N.D.



#12 4,4'-DDE

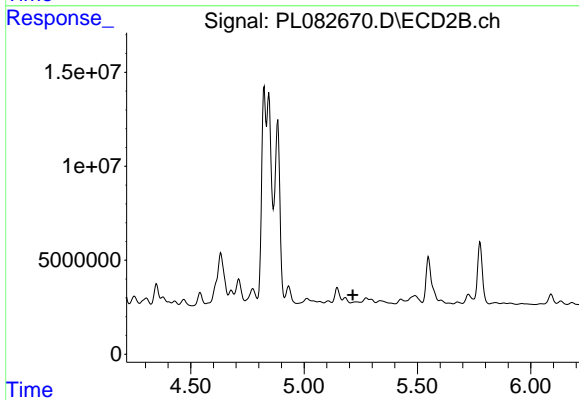
R.T.: 5.069 min
 Delta R.T.: -0.016 min
 Response: 340173
 Conc: 0.15 ng/ml



#13 Dieldrin

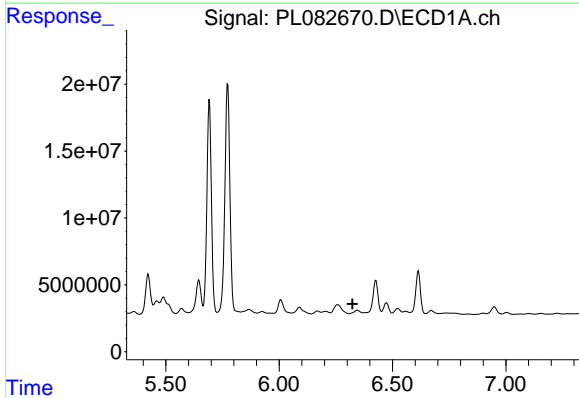
R.T.: 6.090 min
 Delta R.T.: -0.007 min
 Response: 8593131
 Conc: 3.11 ng/ml

Instrument :
 ECD_L
 ClientSampleId :
 PCHLORCCC500



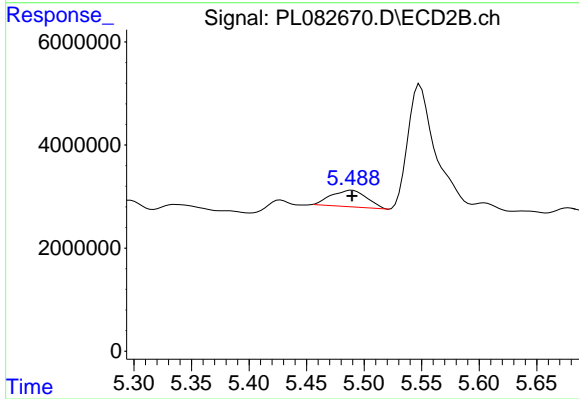
#13 Dieldrin

R.T.: 5.230 min
 Delta R.T.: 0.015 min
 Response: -3079644
 Conc: N.D.



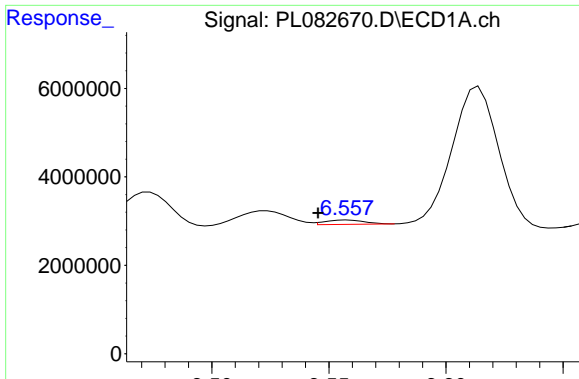
#14 Endrin

R.T.: 6.345 min
 Delta R.T.: 0.021 min
 Response: -481132
 Conc: N.D.



#14 Endrin

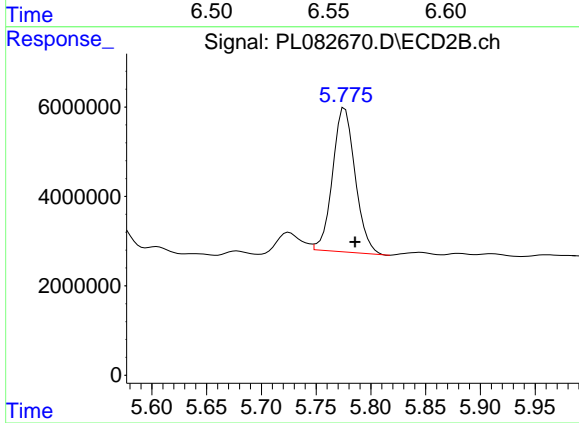
R.T.: 5.490 min
 Delta R.T.: 0.000 min
 Response: 6896121
 Conc: 2.82 ng/ml



#15 Endosulfan II

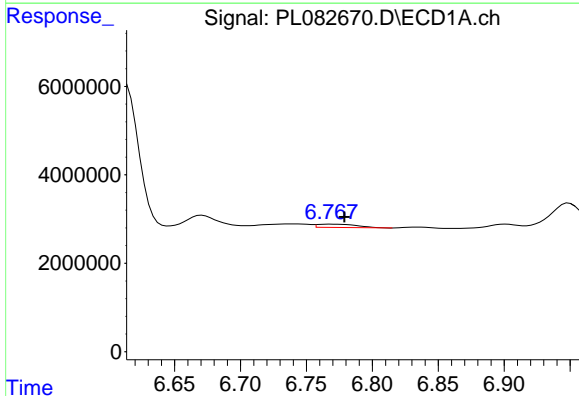
R.T.: 6.558 min
 Delta R.T.: 0.013 min
 Response: 1148614
 Conc: 0.47 ng/ml

Instrument :
 ECD_L
 ClientSampleId :
 PCHLORCCC500



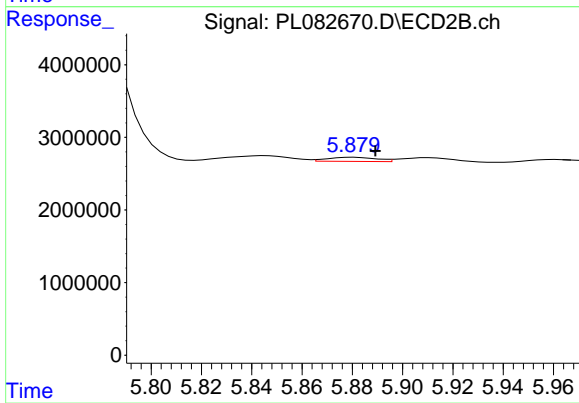
#15 Endosulfan II

R.T.: 5.776 min
 Delta R.T.: -0.009 min
 Response: 46316265
 Conc: 20.55 ng/ml



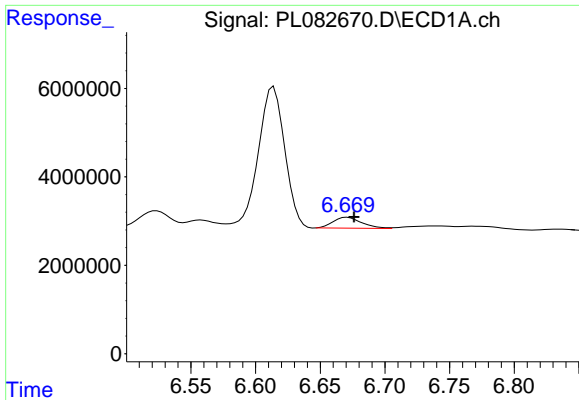
#17 4,4'-DDT

R.T.: 6.768 min
 Delta R.T.: -0.011 min
 Response: 1535588
 Conc: 0.67 ng/ml



#17 4,4'-DDT

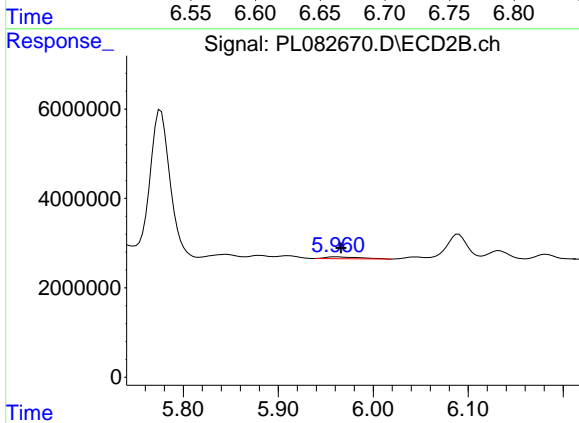
R.T.: 5.881 min
 Delta R.T.: -0.008 min
 Response: 764594
 Conc: 0.36 ng/ml



#18 Endrin aldehyde

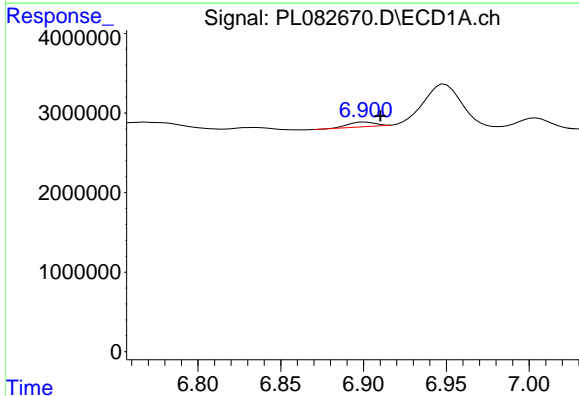
R.T.: 6.671 min
 Delta R.T.: -0.005 min
 Response: 3797405
 Conc: 2.02 ng/ml

Instrument :
 ECD_L
 ClientSampleId :
 PCHLORCCC500



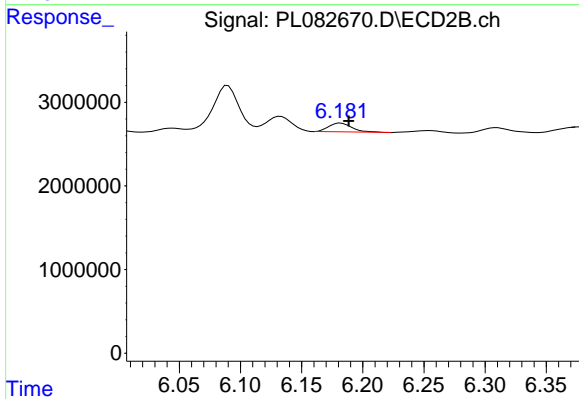
#18 Endrin aldehyde

R.T.: 5.961 min
 Delta R.T.: -0.006 min
 Response: 1033076
 Conc: 0.55 ng/ml



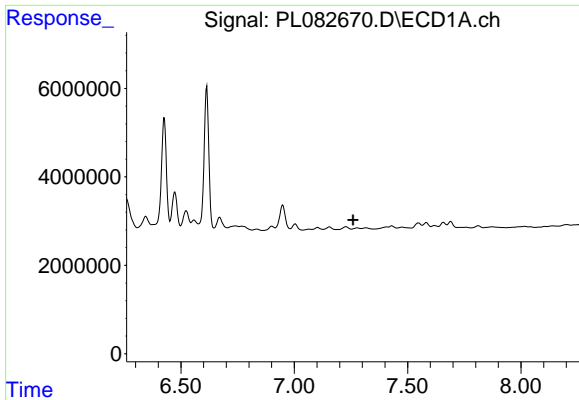
#19 Endosulfan Sulfate

R.T.: 6.901 min
 Delta R.T.: -0.009 min
 Response: 663684
 Conc: 0.28 ng/ml



#19 Endosulfan Sulfate

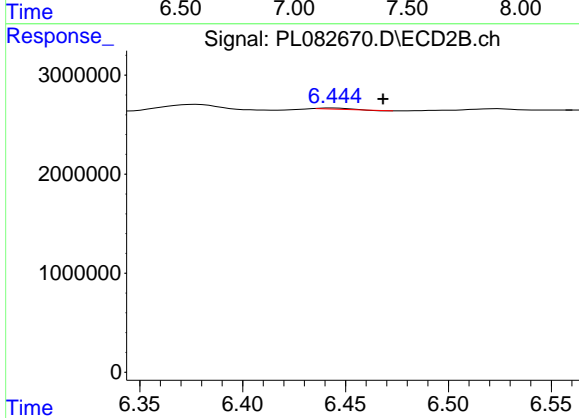
R.T.: 6.182 min
 Delta R.T.: -0.006 min
 Response: 1403391
 Conc: 0.60 ng/ml



#20 Methoxychlor

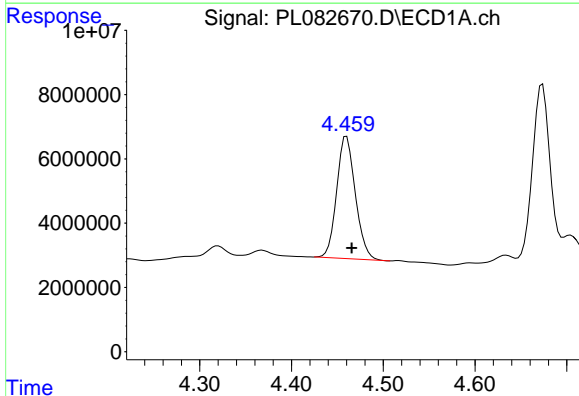
R.T.: 7.278 min
 Delta R.T.: 0.018 min
 Response: -490414
 Conc: N.D.

Instrument :
 ECD_L
 ClientSampleId :
 PCHLORCCC500



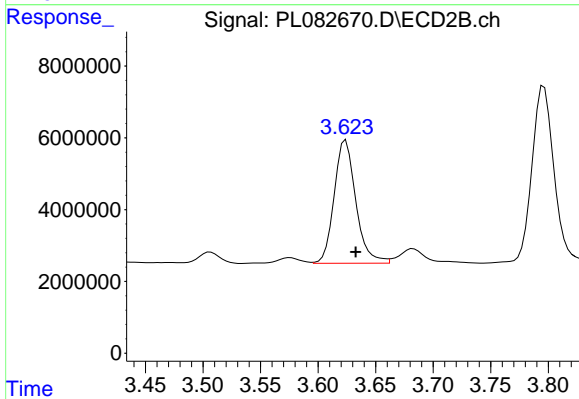
#20 Methoxychlor

R.T.: 6.444 min
 Delta R.T.: -0.025 min
 Response: 106788
 Conc: 0.09 ng/ml



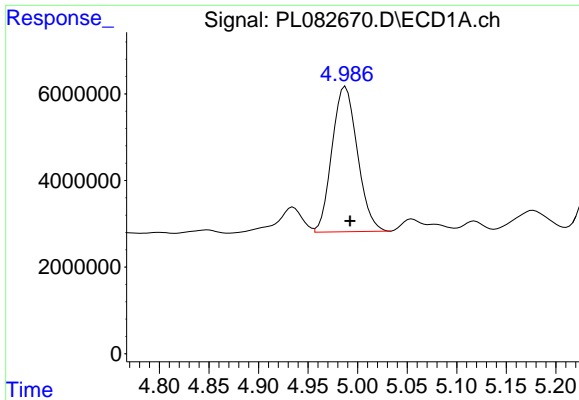
#23 Chlordane-1

R.T.: 4.460 min
 Delta R.T.: -0.005 min
 Response: 53864744
 Conc: 487.28 ng/ml



#23 Chlordane-1

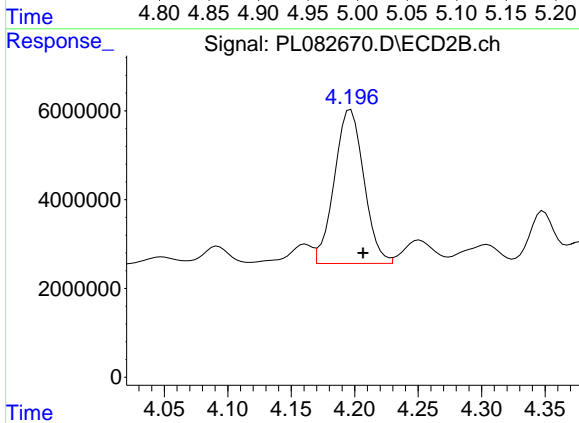
R.T.: 3.624 min
 Delta R.T.: -0.009 min
 Response: 45031490
 Conc: 507.77 ng/ml



#24 Chlordane-2

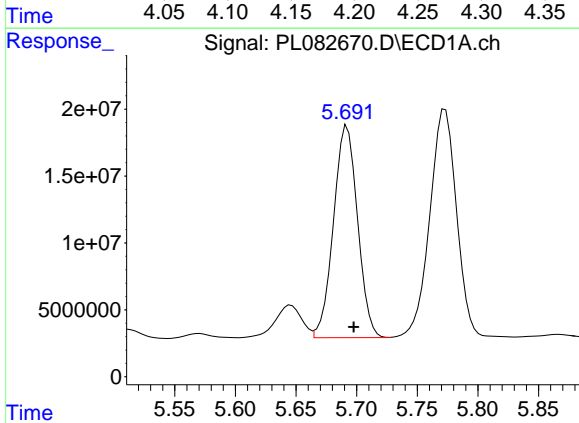
R.T.: 4.988 min
 Delta R.T.: -0.005 min
 Response: 59738169
 Conc: 501.78 ng/ml

Instrument :
 ECD_L
 ClientSampleId :
 PCHLORCCC500



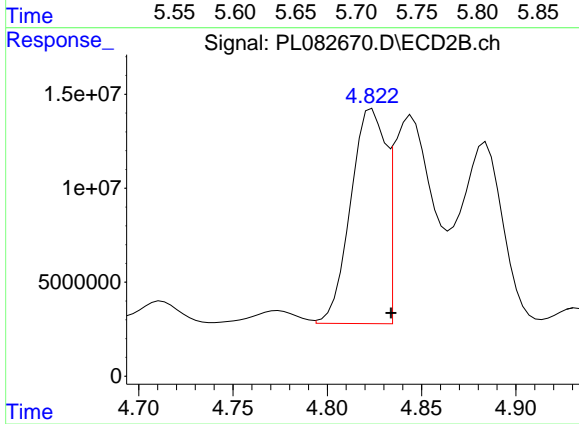
#24 Chlordane-2

R.T.: 4.197 min
 Delta R.T.: -0.010 min
 Response: 56182022
 Conc: 500.99 ng/ml



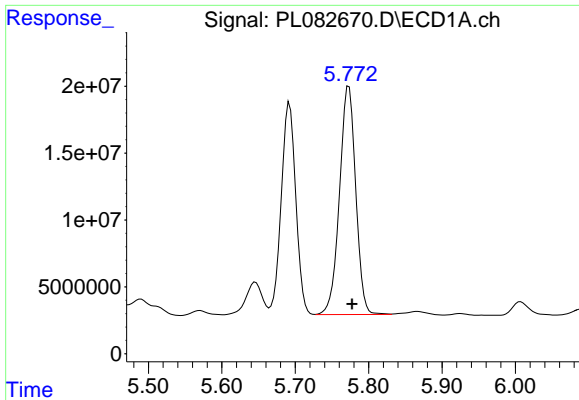
#25 Chlordane-3

R.T.: 5.692 min
 Delta R.T.: -0.005 min
 Response: 218651862
 Conc: 506.49 ng/ml



#25 Chlordane-3

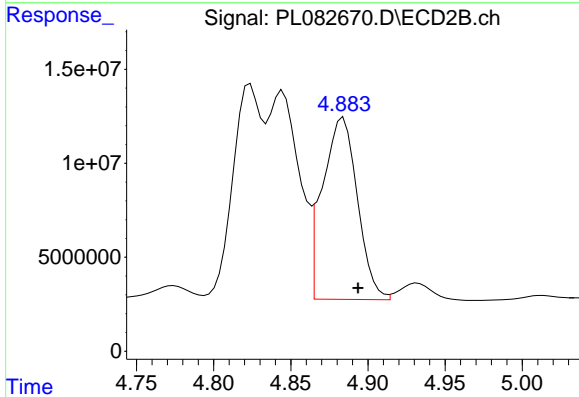
R.T.: 4.824 min
 Delta R.T.: -0.010 min
 Response: 147577731
 Conc: 519.44 ng/ml



#26 Chlordane-4

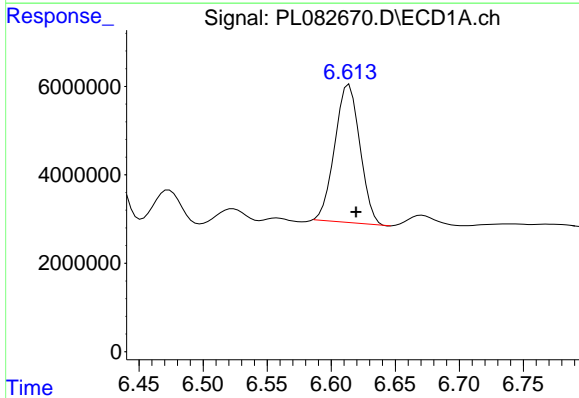
R.T.: 5.773 min
 Delta R.T.: -0.005 min
 Response: 263043001
 Conc: 505.93 ng/ml

Instrument :
 ECD_L
 ClientSampleId :
 PCHLORCCC500



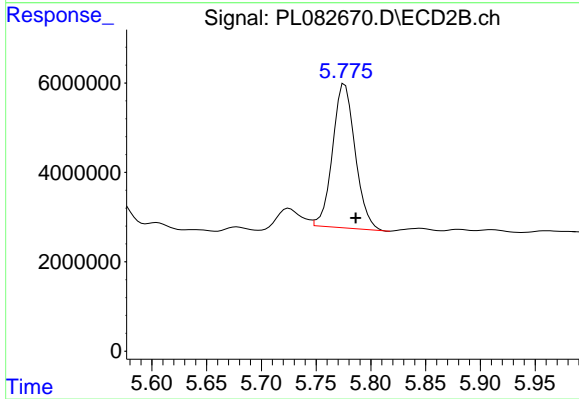
#26 Chlordane-4

R.T.: 4.884 min
 Delta R.T.: -0.009 min
 Response: 152253561
 Conc: 510.22 ng/ml



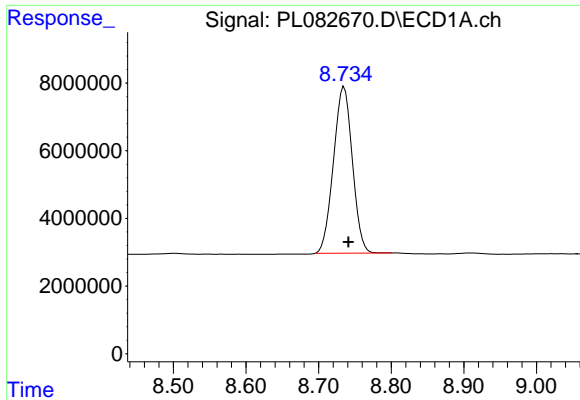
#27 Chlordane-5

R.T.: 6.614 min
 Delta R.T.: -0.005 min
 Response: 42583865
 Conc: 453.51 ng/ml



#27 Chlordane-5

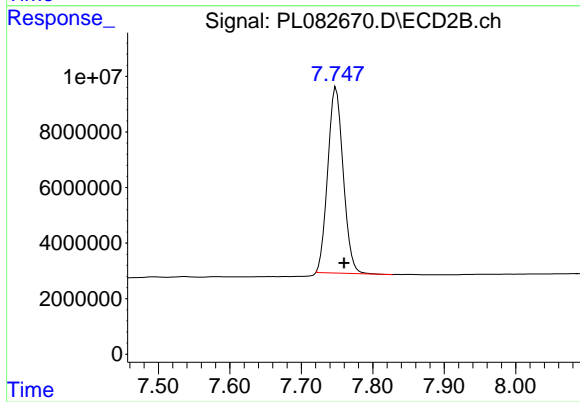
R.T.: 5.776 min
 Delta R.T.: -0.010 min
 Response: 46316265
 Conc: 469.20 ng/ml



#28 Decachlorobiphenyl

R.T.: 8.735 min
Delta R.T.: -0.006 min
Response: 88835353
Conc: 46.53 ng/ml

Instrument :
ECD_L
ClientSampleId :
PCHLORCCC500



#28 Decachlorobiphenyl

R.T.: 7.749 min
Delta R.T.: -0.011 min
Response: 100585832
Conc: 44.07 ng/ml