

Data Path : Z:\pestpcbsrv\HPCHEM1\ECD\_L\Data\PL051220\  
 Data File : PL058627.D  
 Signal(s) : Signal #1: ECD1A.ch Signal #2: ECD2B.ch  
 Acq On : 12 May 2020 20:20  
 Operator : AJ\MA  
 Sample : I.BLK  
 Misc :  
 ALS Vial : 2 Sample Multiplier: 1

Integration File signal 1: autoint1.e  
 Integration File signal 2: autoint2.e  
 Quant Time: May 13 05:05:30 2020  
 Quant Method : Z:\pestpcbsrv\HPCHEM1\ECD\_L\methods\PL051220.M  
 Quant Title : GC Extractables  
 QLast Update : Wed May 13 04:39:44 2020  
 Response via : Initial Calibration  
 Integrator: ChemStation

Volume Inj. : 1 µl  
 Signal #1 Phase : ZB-MR2 Signal #2 Phase: ZB-MR1  
 Signal #1 Info : 30M x 0.32mm x0.2 Signal #2 Info : 30M x 0.32mm x0.5µm

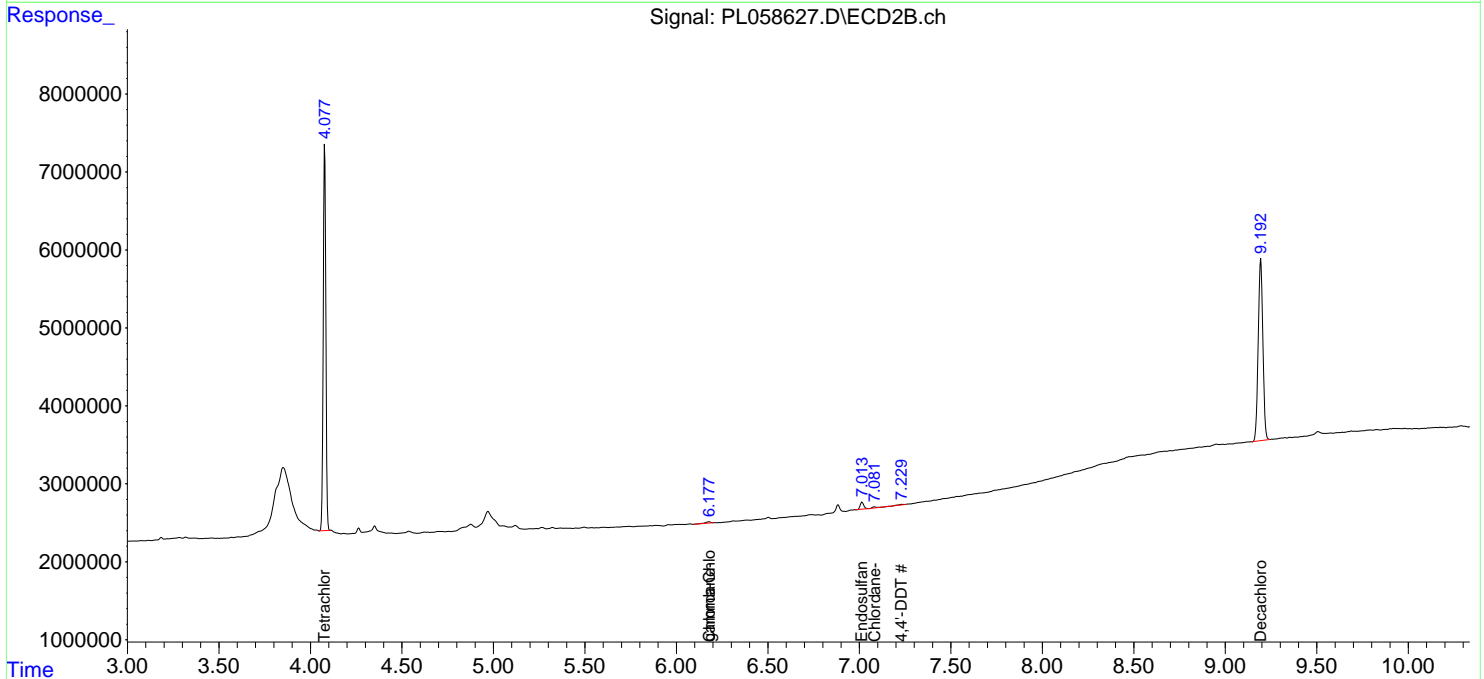
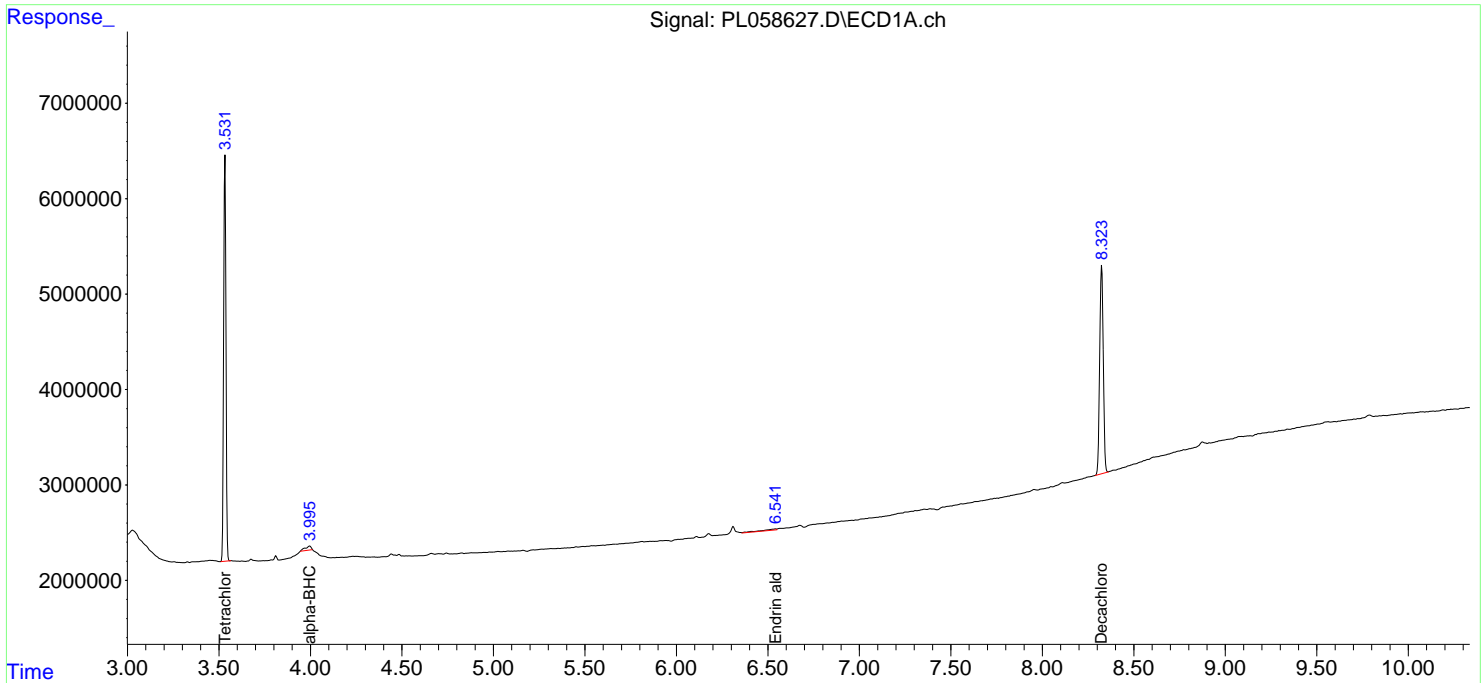
Compound	RT#1	RT#2	Resp#1	Resp#2	ng/ml	ng/ml
-----						
System Monitoring Compounds						
1) SA Tetrachlo...	3.533	4.078	37280950	49318579	22.693	22.784
28) SA Decachlor...	8.324	9.194	29875649	41027499	22.880	23.215
Target Compounds						
2) A alpha-BHC	3.996f	0.000	1004442	0	0.436	N.D. #
10) B gamma-Chl...	0.000	6.179f	0	384073	N.D.	0.163 #
15) B Endosulfa...	0.000	7.015	0	1223963	N.D.	0.613 #
17) MA 4,4'-DDT	0.000	7.230	0	175705	N.D.	0.104 #
18) B Endrin al...	6.542	0.000	754546	0	0.643	N.D. #
25) Chlordane-3	0.000	6.179f	0	384073	N.D.	1.268 #
27) Chlordane-5	0.000	7.083	0	239351	N.D.	3.834 #
-----						

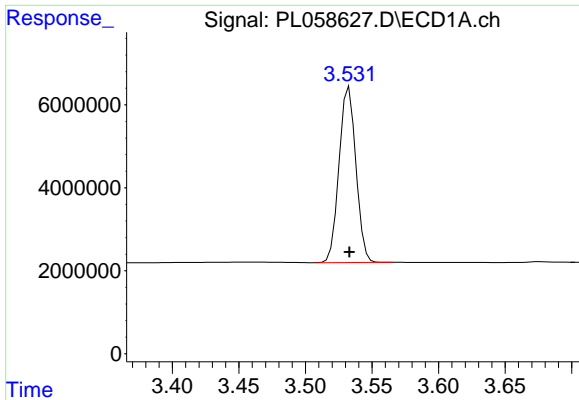
(f)=RT Delta > 1/2 Window (#)=Amounts differ by > 25% (m)=manual int.

Data Path : Z:\pestpcbsrv\HPCHEM1\ECD\_L\Data\PL051220\  
 Data File : PL058627.D  
 Signal(s) : Signal #1: ECD1A.ch Signal #2: ECD2B.ch  
 Acq On : 12 May 2020 20:20  
 Operator : AJ\MA  
 Sample : I.BLK  
 Misc :  
 ALS Vial : 2 Sample Multiplier: 1

Integration File signal 1: autoint1.e  
 Integration File signal 2: autoint2.e  
 Quant Time: May 13 05:05:30 2020  
 Quant Method : Z:\pestpcbsrv\HPCHEM1\ECD\_L\methods\PL051220.M  
 Quant Title : GC Extractables  
 QLast Update : Wed May 13 04:39:44 2020  
 Response via : Initial Calibration  
 Integrator: ChemStation

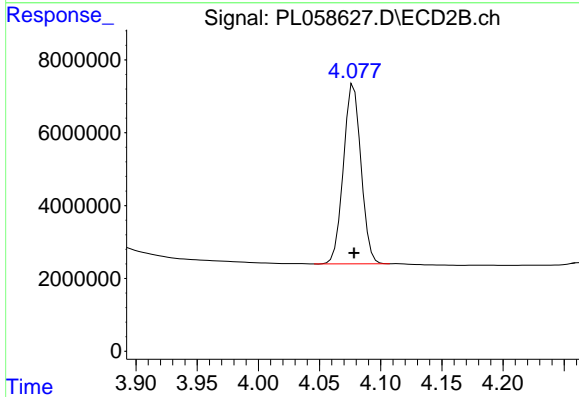
Volume Inj. : 1 µl  
 Signal #1 Phase : ZB-MR2 Signal #2 Phase: ZB-MR1  
 Signal #1 Info : 30M x 0.32mm x0.2 Signal #2 Info : 30M x 0.32mm x0.5µm





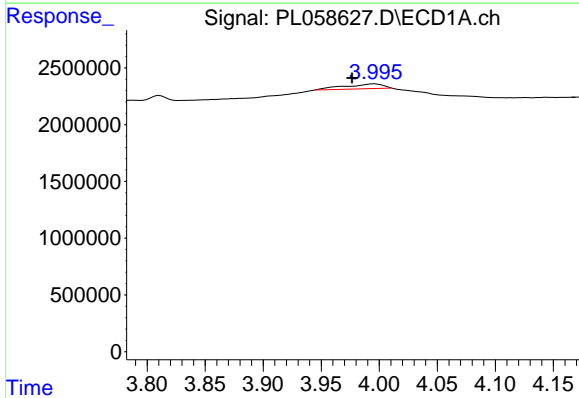
#1 Tetrachloro-m-xylene

R.T.: 3.533 min  
 Delta R.T.: 0.000 min  
 Response: 37280950  
 Conc: 22.69 ng/ml



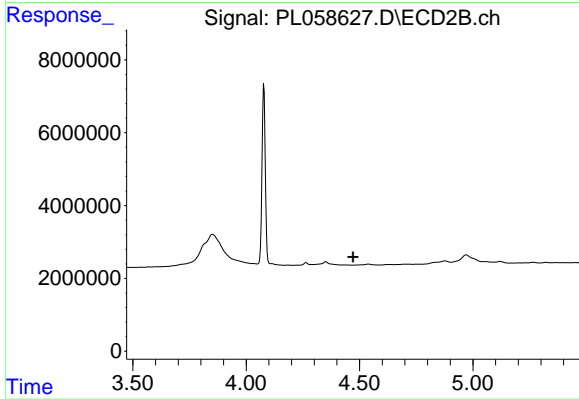
#1 Tetrachloro-m-xylene

R.T.: 4.078 min  
 Delta R.T.: 0.000 min  
 Response: 49318579  
 Conc: 22.78 ng/ml



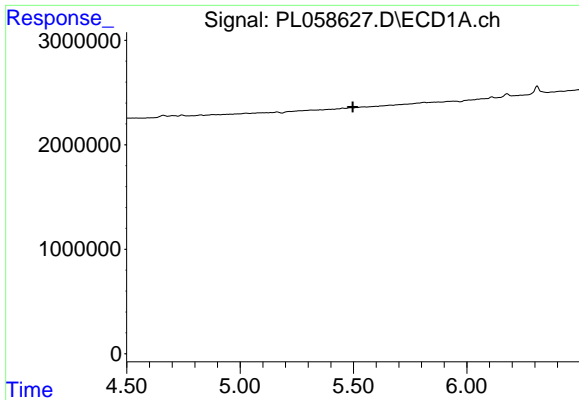
#2 alpha-BHC

R.T.: 3.996 min  
 Delta R.T.: 0.019 min  
 Response: 1004442  
 Conc: 0.44 ng/ml

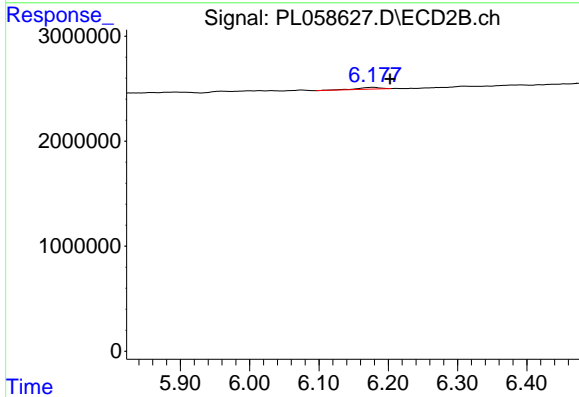


#2 alpha-BHC

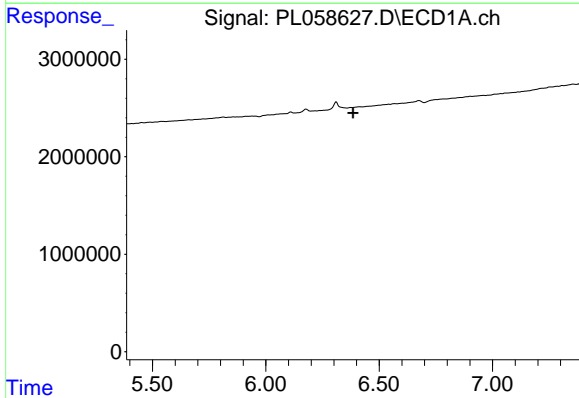
R.T.: 0.000 min  
 Exp R.T.: 4.471 min  
 Response: 0  
 Conc: N.D.



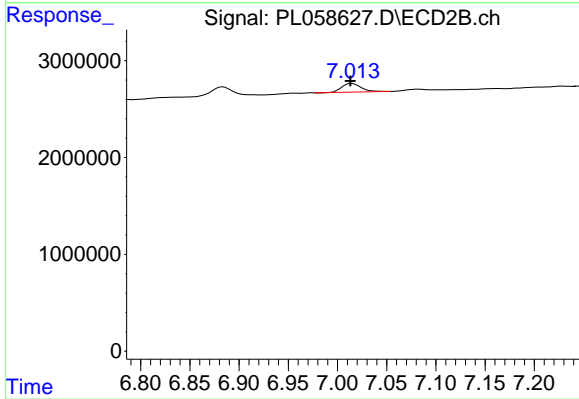
#10 gamma-Chlordane  
 R.T.: 0.000 min  
 Exp R.T. : 5.497 min  
 Response: 0  
 Conc: N.D.



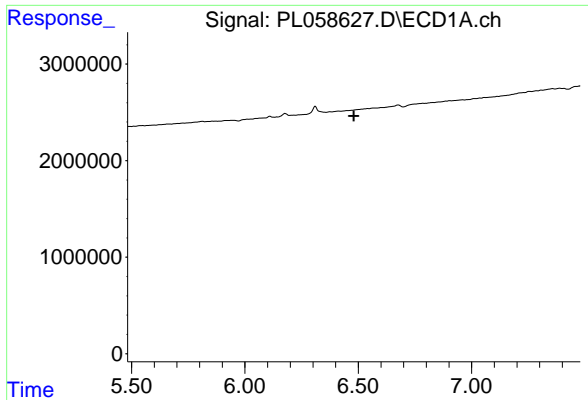
#10 gamma-Chlordane  
 R.T.: 6.179 min  
 Delta R.T.: -0.024 min  
 Response: 384073  
 Conc: 0.16 ng/ml



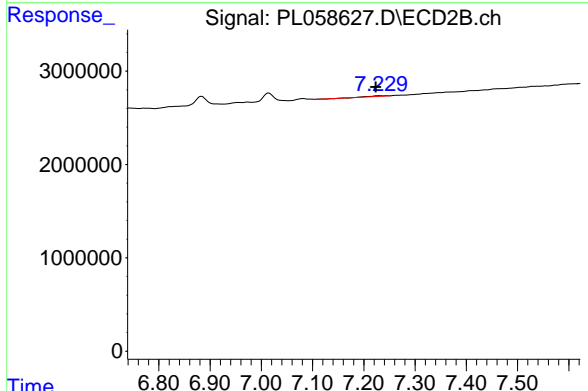
#15 Endosulfan II  
 R.T.: 0.000 min  
 Exp R.T. : 6.385 min  
 Response: 0  
 Conc: N.D.



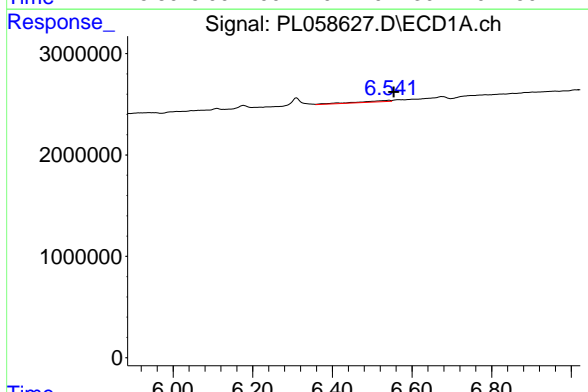
#15 Endosulfan II  
 R.T.: 7.015 min  
 Delta R.T.: 0.002 min  
 Response: 1223963  
 Conc: 0.61 ng/ml



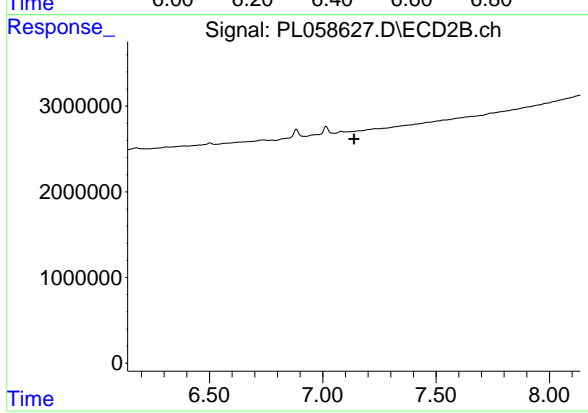
#17 4,4'-DDT  
R.T.: 0.000 min  
Exp R.T. : 6.480 min  
Response: 0  
Conc: N.D.



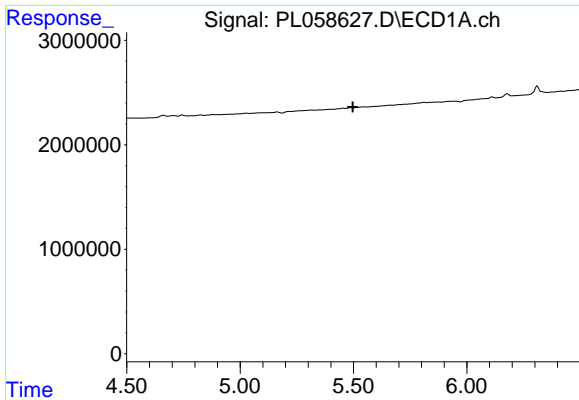
#17 4,4'-DDT  
R.T.: 7.230 min  
Delta R.T.: 0.007 min  
Response: 175705  
Conc: 0.10 ng/ml



#18 Endrin aldehyde  
R.T.: 6.542 min  
Delta R.T.: -0.012 min  
Response: 754546  
Conc: 0.64 ng/ml

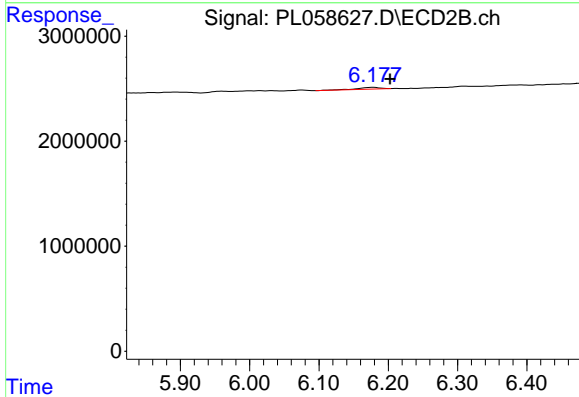


#18 Endrin aldehyde  
R.T.: 0.000 min  
Exp R.T. : 7.138 min  
Response: 0  
Conc: N.D.



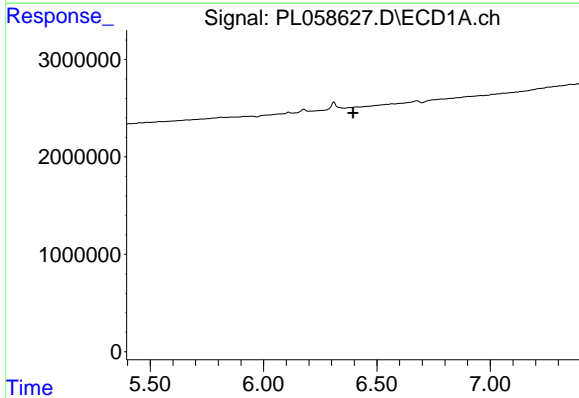
#25 Chlordane-3

R.T.: 0.000 min  
 Exp R.T. : 5.497 min  
 Response: 0  
 Conc: N.D.



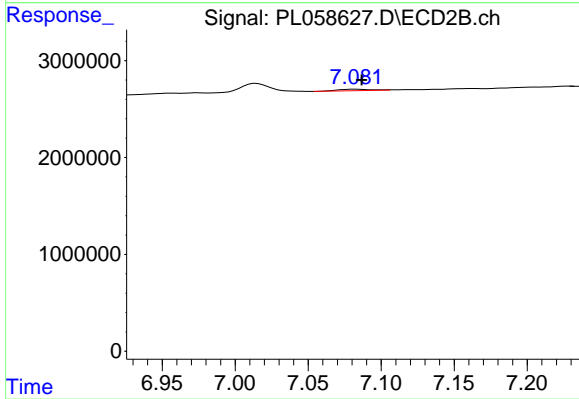
#25 Chlordane-3

R.T.: 6.179 min  
 Delta R.T.: -0.024 min  
 Response: 384073  
 Conc: 1.27 ng/ml



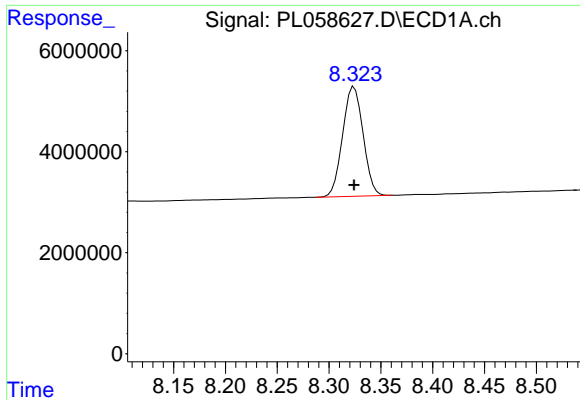
#27 Chlordane-5

R.T.: 0.000 min  
 Exp R.T. : 6.396 min  
 Response: 0  
 Conc: N.D.



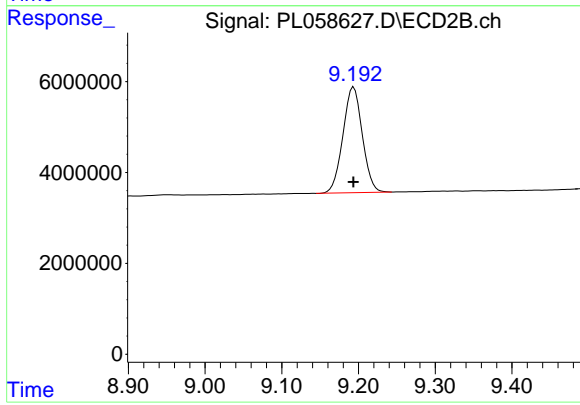
#27 Chlordane-5

R.T.: 7.083 min  
 Delta R.T.: -0.004 min  
 Response: 239351  
 Conc: 3.83 ng/ml



#28 Decachlorobiphenyl

R.T.: 8.324 min  
Delta R.T.: 0.000 min  
Response: 29875649  
Conc: 22.88 ng/ml



#28 Decachlorobiphenyl

R.T.: 9.194 min  
Delta R.T.: 0.000 min  
Response: 41027499  
Conc: 23.22 ng/ml