

Data Path : Z:\pestpcbsrv\HPCHEM1\ECD_L\Data\PL051320\
 Data File : PL058676.D
 Signal(s) : Signal #1: ECD1A.ch Signal #2: ECD2B.ch
 Acq On : 13 May 2020 11:09
 Operator : AJ\MA
 Sample : PB128770BL
 Misc :
 ALS Vial : 9 Sample Multiplier: 1

Instrument :
 ECD_L
 ClientSampleId :
 PB128770BL

Integration File signal 1: autoint1.e
 Integration File signal 2: autoint2.e
 Quant Time: May 14 01:53:36 2020
 Quant Method : Z:\pestpcbsrv\HPCHEM1\ECD_L\methods\PL051220.M
 Quant Title : GC Extractables
 QLast Update : Wed May 13 09:14:54 2020
 Response via : Initial Calibration
 Integrator: ChemStation

Volume Inj. : 1 µl
 Signal #1 Phase : ZB-MR2 Signal #2 Phase: ZB-MR1
 Signal #1 Info : 30M x 0.32mm x0.2 Signal #2 Info : 30M x 0.32mm x0.5µm

Compound	RT#1	RT#2	Resp#1	Resp#2	ng/ml	ng/ml

System Monitoring Compounds						
1) SA Tetrachlo...	3.532	4.077	36823081	51333380	22.414	23.715
28) SA Decachlor...	8.319	9.190	32464285	47266583	24.862	26.745

Target Compounds

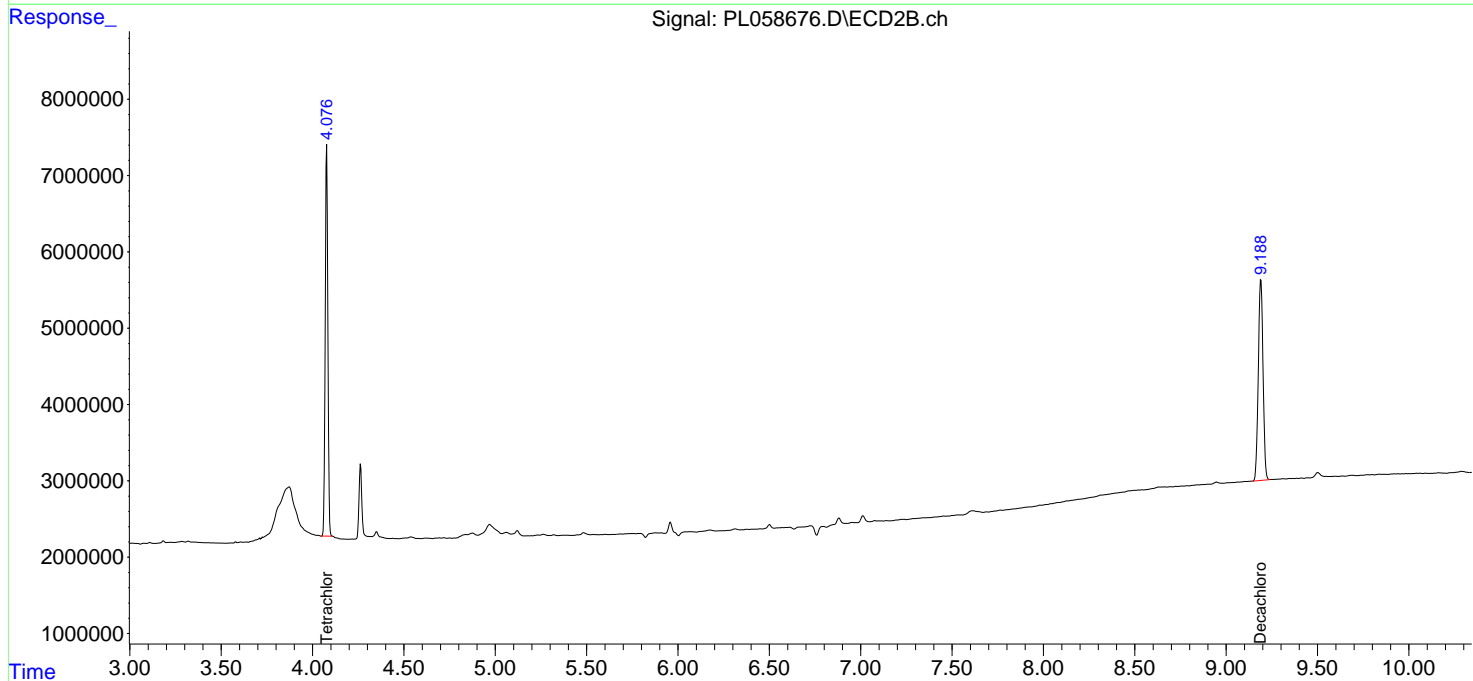
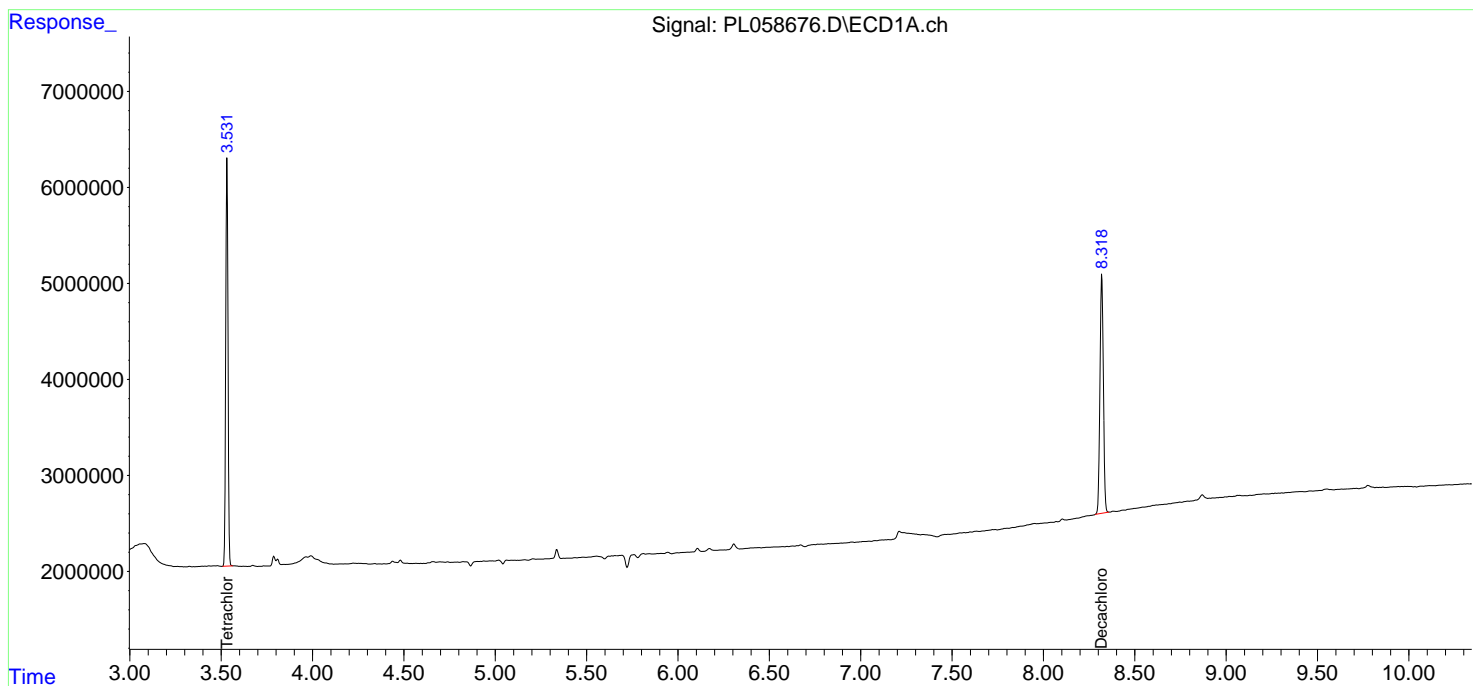
 (f)=RT Delta > 1/2 Window (#)=Amounts differ by > 25% (m)=manual int.

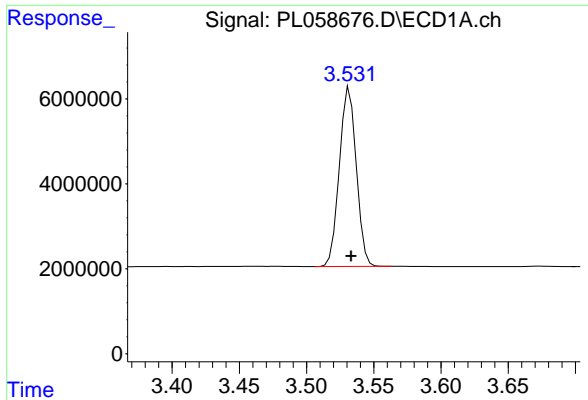
Data Path : Z:\pestpcbsrv\HPCHEM1\ECD_L\Data\PL051320\
 Data File : PL058676.D
 Signal(s) : Signal #1: ECD1A.ch Signal #2: ECD2B.ch
 Acq On : 13 May 2020 11:09
 Operator : AJ\MA
 Sample : PB128770BL
 Misc :
 ALS Vial : 9 Sample Multiplier: 1

Instrument :
 ECD_L
 ClientSampleId :
 PB128770BL

Integration File signal 1: autoint1.e
 Integration File signal 2: autoint2.e
 Quant Time: May 14 01:53:36 2020
 Quant Method : Z:\pestpcbsrv\HPCHEM1\ECD_L\methods\PL051220.M
 Quant Title : GC Extractables
 QLast Update : Wed May 13 09:14:54 2020
 Response via : Initial Calibration
 Integrator: ChemStation

Volume Inj. : 1 µl
 Signal #1 Phase : ZB-MR2 Signal #2 Phase: ZB-MR1
 Signal #1 Info : 30M x 0.32mm x0.2 Signal #2 Info : 30M x 0.32mm x0.5µm

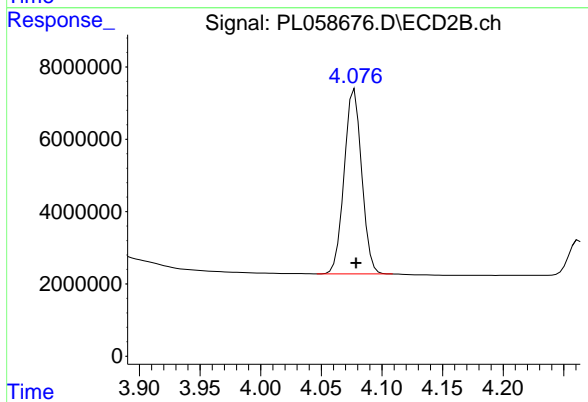




#1 Tetrachloro-m-xylene

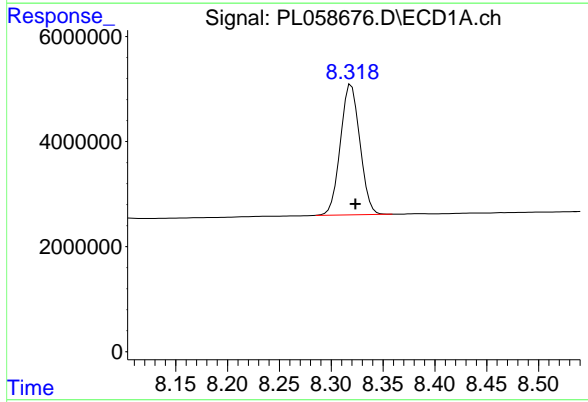
R.T.: 3.532 min
 Delta R.T.: -0.001 min
 Response: 36823081
 Conc: 22.41 ng/ml

Instrument :
 ECD_L
 ClientSampled :
 PB128770BL



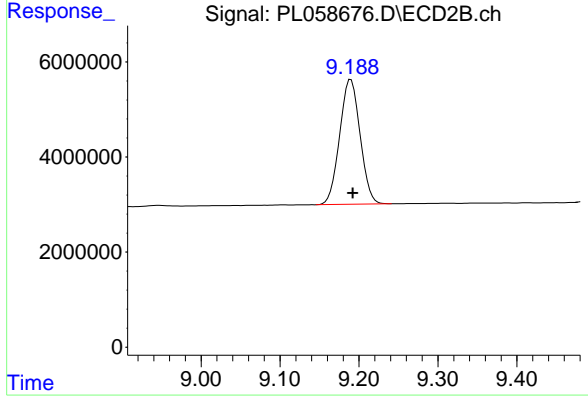
#1 Tetrachloro-m-xylene

R.T.: 4.077 min
 Delta R.T.: -0.001 min
 Response: 51333380
 Conc: 23.71 ng/ml



#28 Decachlorobiphenyl

R.T.: 8.319 min
 Delta R.T.: -0.004 min
 Response: 32464285
 Conc: 24.86 ng/ml



#28 Decachlorobiphenyl

R.T.: 9.190 min
 Delta R.T.: -0.002 min
 Response: 47266583
 Conc: 26.75 ng/ml