

Data Path : Z:\pestpcbsrv\HPCHEM1\ECD_L\Data\PL051320\
 Data File : PL058687.D
 Signal(s) : Signal #1: ECD1A.ch Signal #2: ECD2B.ch
 Acq On : 13 May 2020 16:37
 Operator : AJ\MA
 Sample : PTOXCCC500
 Misc :
 ALS Vial : 6 Sample Multiplier: 1

Instrument :
 ECD_L
 ClientSampleId :
 PTOXCCC500

Integration File signal 1: autoint1.e
 Integration File signal 2: autoint2.e
 Quant Time: May 15 01:01:13 2020
 Quant Method : Z:\pestpcbsrv\HPCHEM1\ECD_L\methods\LTX051220.M
 Quant Title : GC Extractables
 QLast Update : Wed May 13 04:29:54 2020
 Response via : Initial Calibration
 Integrator: ChemStation

Volume Inj. : 2 µl
 Signal #1 Phase : Rtx-CLPesticide 1 Signal #2 Phase: Rtx-CLPesticide 1
 Signal #1 Info : 30M x 0.32mm x0.3 Signal #2 Info : 30M x 0.32mm x 0.25µm

Compound	RT#1	RT#2	Resp#1	Resp#2	ng/ml	ng/ml

System Monitoring Compounds						
1) SA Tetrachlo...	3.532	4.078	74423406	106.9E6	45.867	49.933
7) SA Decachlor...	8.320	9.191	64389354	90759529	48.540	51.196
Target Compounds						
2) Toxaphene-1	5.812	6.484	5531224	5855489	500.875	507.751
3) Toxaphene-2	5.974	7.183	4990004	10593539	496.335	548.302
4) Toxaphene-3	6.296	7.258	6117287	28486914	465.871	545.371
5) Toxaphene-4	6.416	7.345	12214586	17279200	466.833	556.073
6) Toxaphene-5	7.151	7.760	12817486	13680787	491.481	535.307

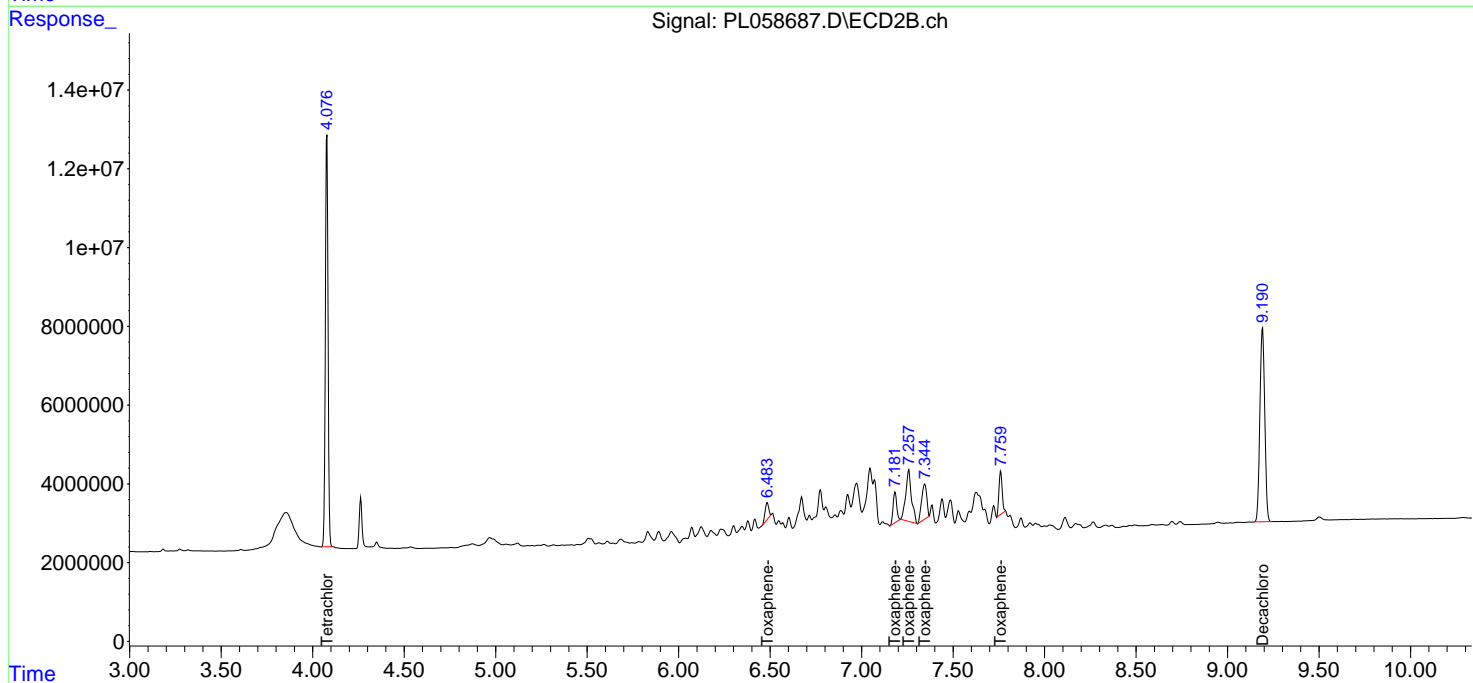
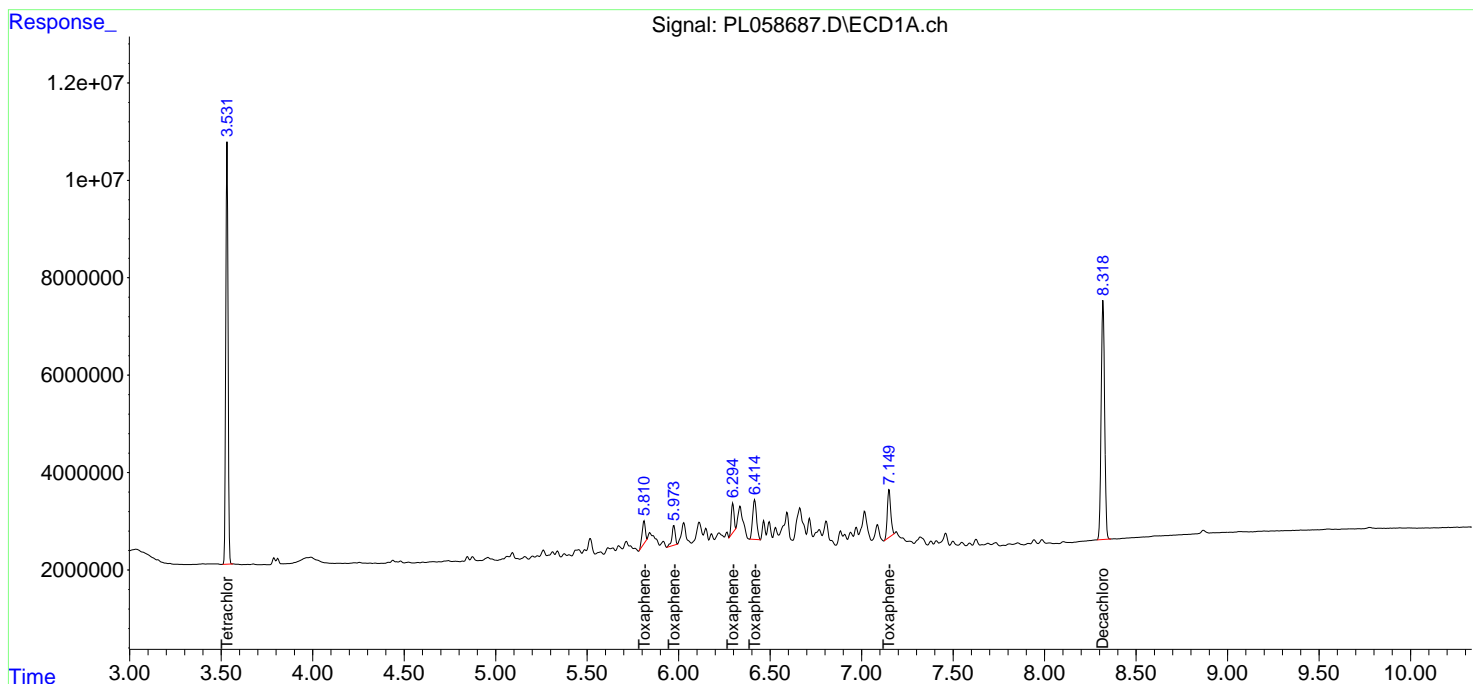
(f)=RT Delta > 1/2 Window (#)=Amounts differ by > 25% (m)=manual int.

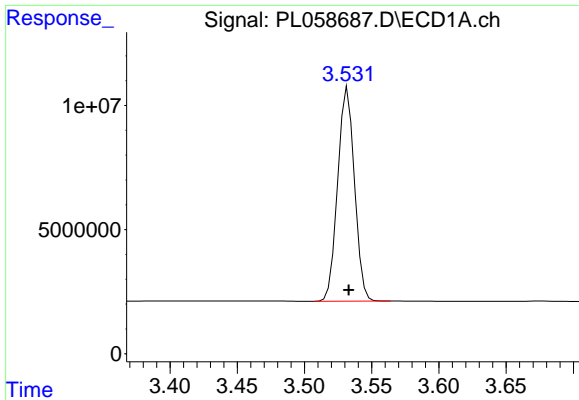
Data Path : Z:\pestpcbsrv\HPCHEM1\ECD_L\Data\PL051320\
 Data File : PL058687.D
 Signal(s) : Signal #1: ECD1A.ch Signal #2: ECD2B.ch
 Acq On : 13 May 2020 16:37
 Operator : AJ\MA
 Sample : PTOXCCC500
 Misc :
 ALS Vial : 6 Sample Multiplier: 1

Instrument :
 ECD_L
 ClientSampleId :
 PTOXCCC500

Integration File signal 1: autoint1.e
 Integration File signal 2: autoint2.e
 Quant Time: May 15 01:01:13 2020
 Quant Method : Z:\pestpcbsrv\HPCHEM1\ECD_L\methods\LTX051220.M
 Quant Title : GC Extractables
 QLast Update : Wed May 13 04:29:54 2020
 Response via : Initial Calibration
 Integrator: ChemStation

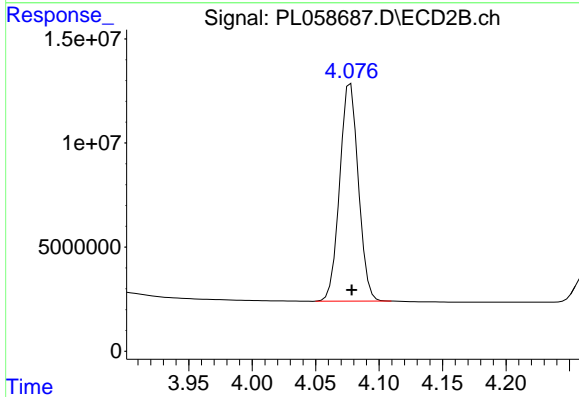
Volume Inj. : 2 µl
 Signal #1 Phase : Rtx-CLPesticide 1 Signal #2 Phase: Rtx-CLPesticide 1
 Signal #1 Info : 30M x 0.32mm x0.3 Signal #2 Info : 30M x 0.32mm x 0.25µm



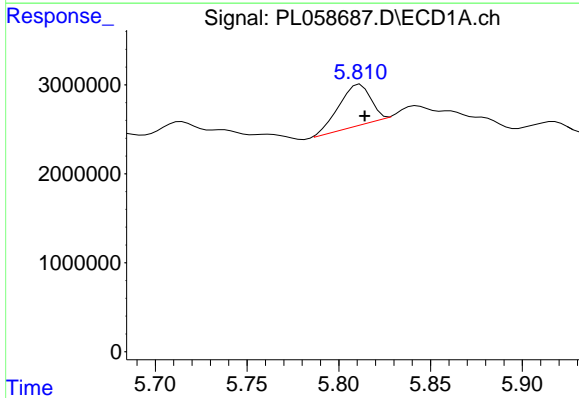


#1 Tetrachloro-m-xylene
 R.T.: 3.532 min
 Delta R.T.: 0.000 min
 Response: 74423406
 Conc: 45.87 ng/ml

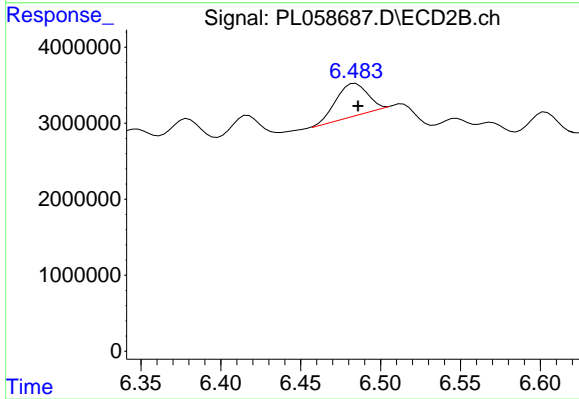
Instrument :
 ECD_L
 ClientSampleId :
 PTOXCCC500



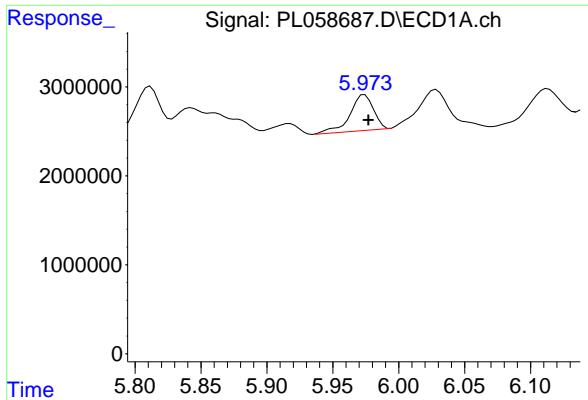
#1 Tetrachloro-m-xylene
 R.T.: 4.078 min
 Delta R.T.: 0.000 min
 Response: 106932991
 Conc: 49.93 ng/ml



#2 Toxaphene-1
 R.T.: 5.812 min
 Delta R.T.: -0.003 min
 Response: 5531224
 Conc: 500.87 ng/ml



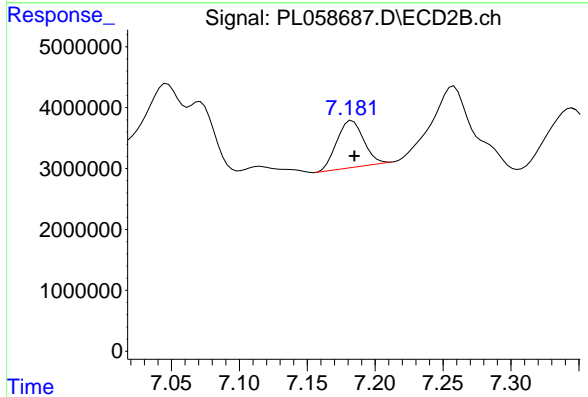
#2 Toxaphene-1
 R.T.: 6.484 min
 Delta R.T.: -0.002 min
 Response: 5855489
 Conc: 507.75 ng/ml



#3 Toxaphene-2

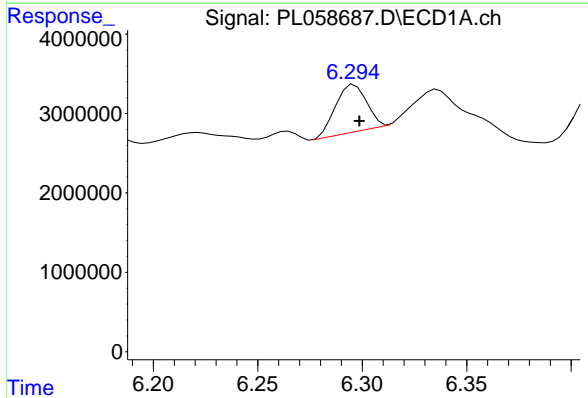
R.T.: 5.974 min
 Delta R.T.: -0.003 min
 Response: 4990004
 Conc: 496.34 ng/ml

Instrument :
 ECD_L
 ClientSampleId :
 PTOXCCC500



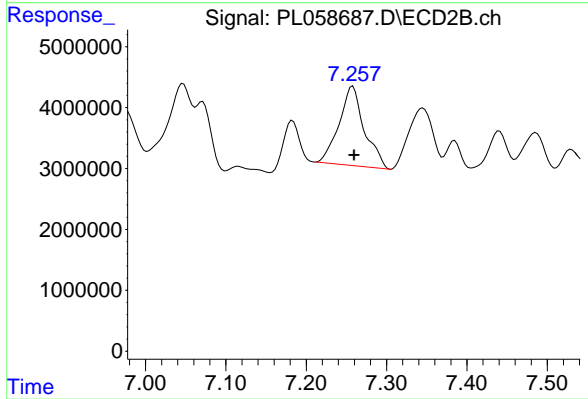
#3 Toxaphene-2

R.T.: 7.183 min
 Delta R.T.: -0.002 min
 Response: 10593539
 Conc: 548.30 ng/ml



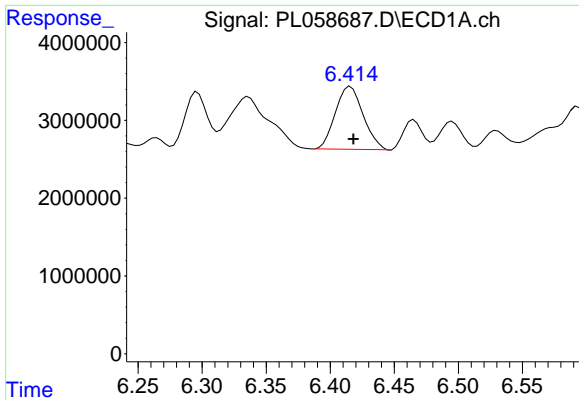
#4 Toxaphene-3

R.T.: 6.296 min
 Delta R.T.: -0.002 min
 Response: 6117287
 Conc: 465.87 ng/ml



#4 Toxaphene-3

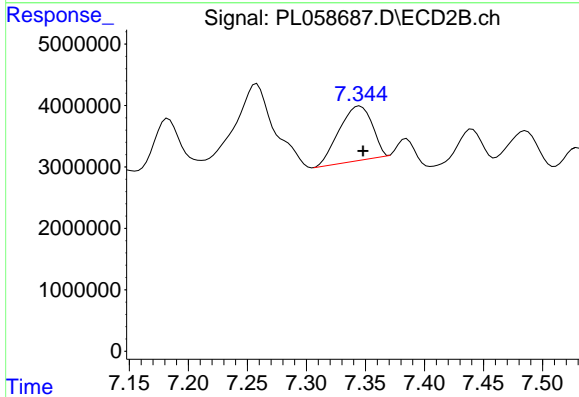
R.T.: 7.258 min
 Delta R.T.: -0.002 min
 Response: 28486914
 Conc: 545.37 ng/ml



#5 Toxaphene-4

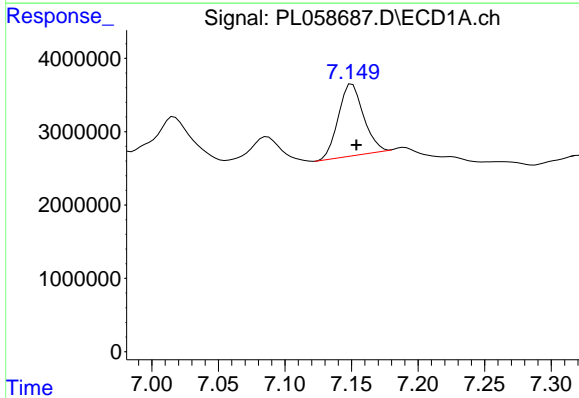
R.T.: 6.416 min
 Delta R.T.: -0.002 min
 Response: 12214586
 Conc: 466.83 ng/ml

Instrument :
 ECD_L
 ClientSampleId :
 PTOXCCC500



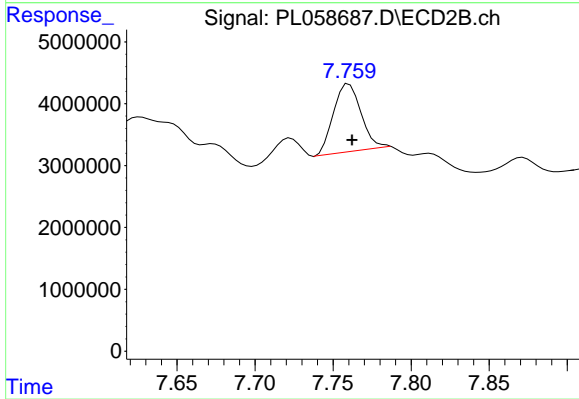
#5 Toxaphene-4

R.T.: 7.345 min
 Delta R.T.: -0.003 min
 Response: 17279200
 Conc: 556.07 ng/ml



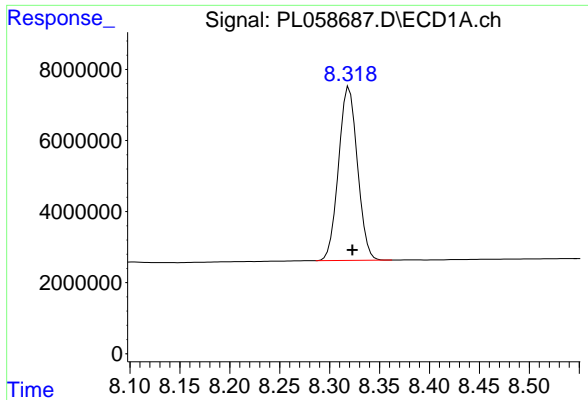
#6 Toxaphene-5

R.T.: 7.151 min
 Delta R.T.: -0.003 min
 Response: 12817486
 Conc: 491.48 ng/ml



#6 Toxaphene-5

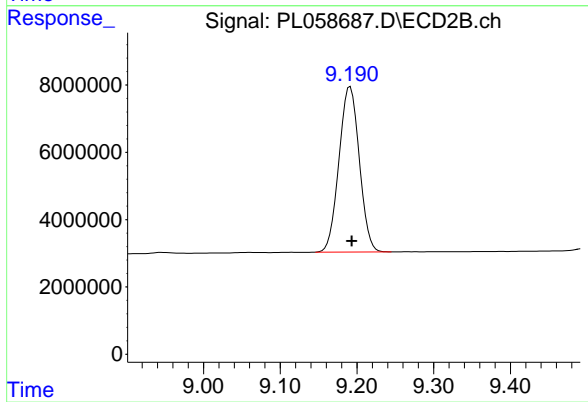
R.T.: 7.760 min
 Delta R.T.: -0.002 min
 Response: 13680787
 Conc: 535.31 ng/ml



#7 Decachlorobiphenyl

R.T.: 8.320 min
Delta R.T.: -0.003 min
Response: 64389354
Conc: 48.54 ng/ml

Instrument :
ECD_L
ClientSampleId :
PTOXCCC500



#7 Decachlorobiphenyl

R.T.: 9.191 min
Delta R.T.: -0.002 min
Response: 90759529
Conc: 51.20 ng/ml