

Data Path : Z:\pestpcbsrv\HPCHEM1\ECD\_L\Data\PL051320\  
 Data File : PL058689.D  
 Signal(s) : Signal #1: ECD1A.ch Signal #2: ECD2B.ch  
 Acq On : 13 May 2020 17:05  
 Operator : AJ\MA  
 Sample : L2182-08  
 Misc : 50 PPB CHLOR LOQ  
 ALS Vial : 20 Sample Multiplier: 1

**Instrument :**  
 ECD\_L  
**ClientSampleId :**  
 LOQ-WATER-02-QT2-2020

Integration File signal 1: autoint1.e  
 Integration File signal 2: autoint2.e  
 Quant Time: May 14 01:57:20 2020  
 Quant Method : Z:\pestpcbsrv\HPCHEM1\ECD\_L\methods\PL051220.M  
 Quant Title : GC Extractables  
 QLast Update : Wed May 13 09:14:54 2020  
 Response via : Initial Calibration  
 Integrator: ChemStation

Volume Inj. : 1 µl  
 Signal #1 Phase : ZB-MR2 Signal #2 Phase: ZB-MR1  
 Signal #1 Info : 30M x 0.32mm x0.2 Signal #2 Info : 30M x 0.32mm x0.5µm

Compound	RT#1	RT#2	Resp#1	Resp#2	ng/ml	ng/ml
-----						
System Monitoring Compounds						
1) SA Tetrachlo...	3.531	4.077	36134061	48745075	21.995	22.519
28) SA Decachlor...	8.319	9.191	31066013	44933777	23.791	25.425
Target Compounds						
23) Chlordane-1	4.413	5.082	2572852	4423740	51.304	55.279
24) Chlordane-2	4.920	5.552	2634515	4318258	48.501	50.532
25) Chlordane-3	5.494	6.201	6360923	14864795	45.466	49.077
26) Chlordane-4	5.552	6.276	5331634	18323865	46.454	50.277
27) Chlordane-5	6.392	7.085	2421943	3060787	49.622	49.028
-----						

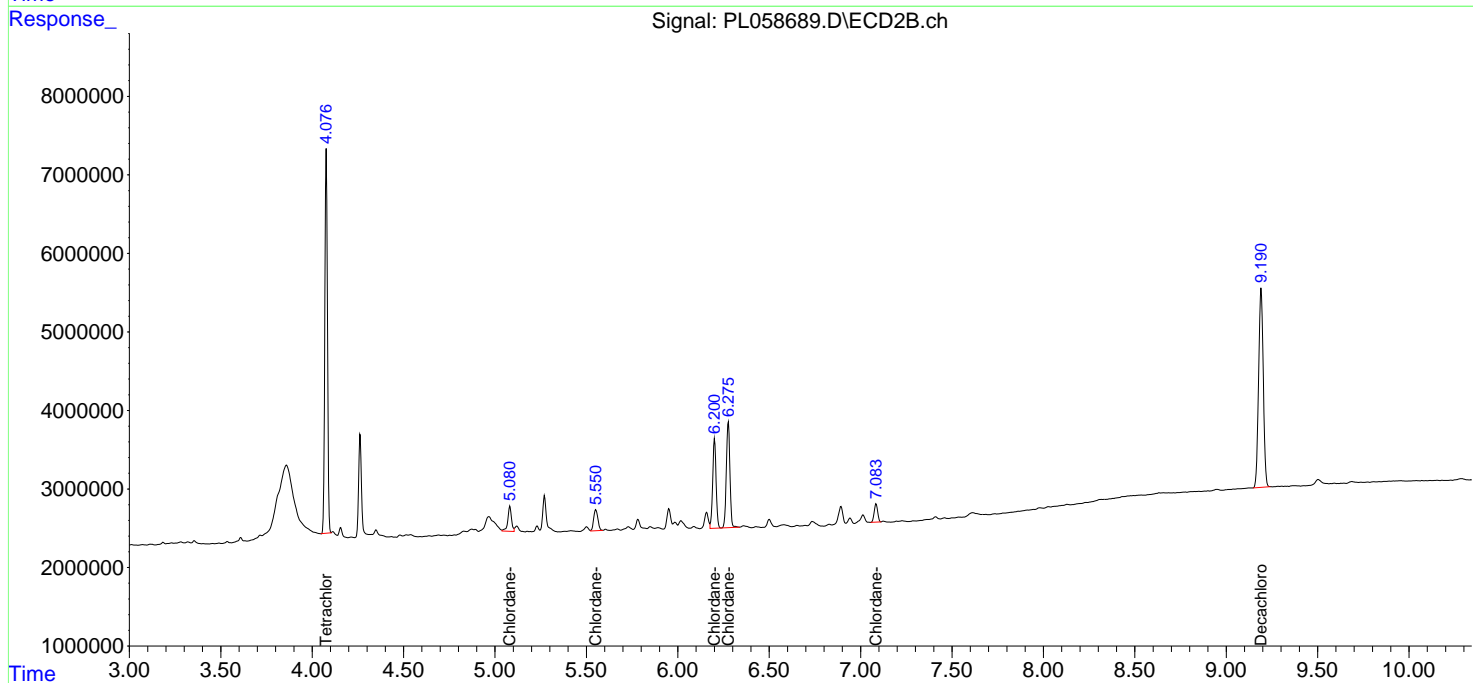
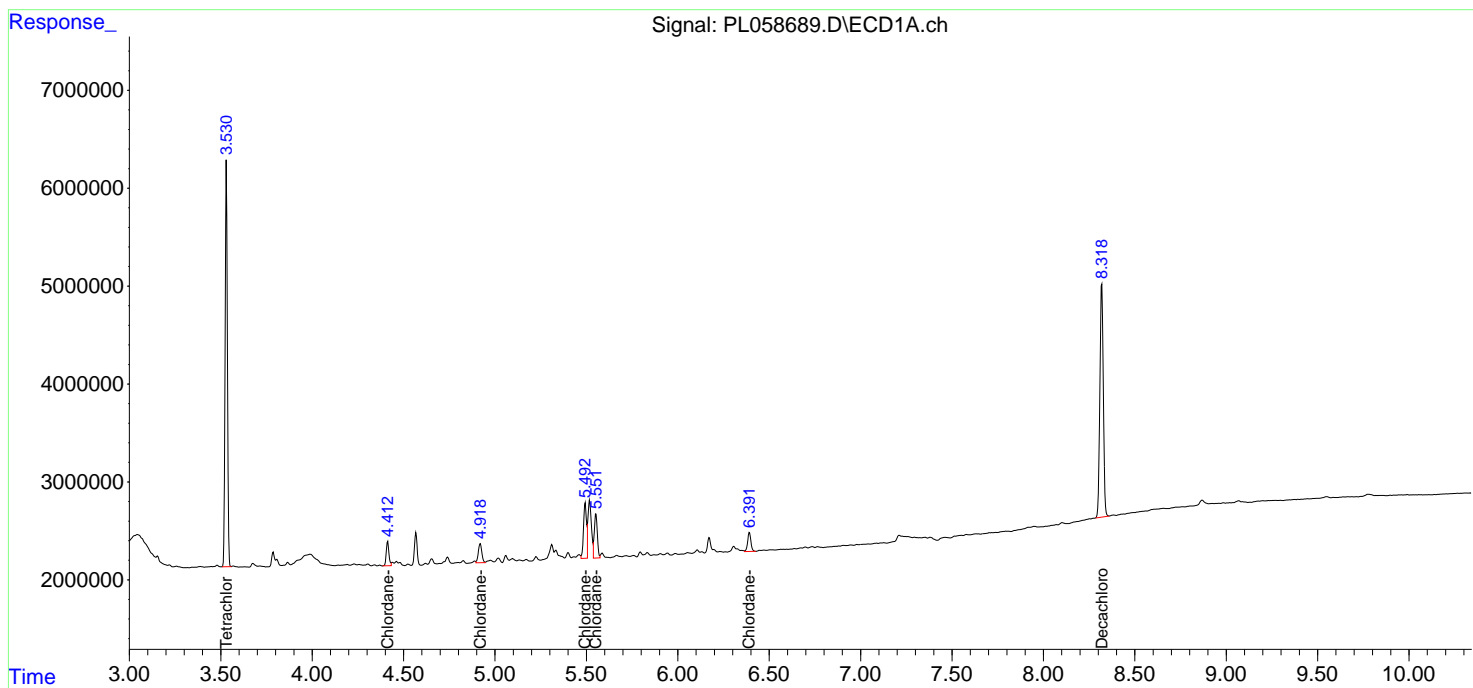
(f)=RT Delta > 1/2 Window (#)=Amounts differ by > 25% (m)=manual int.

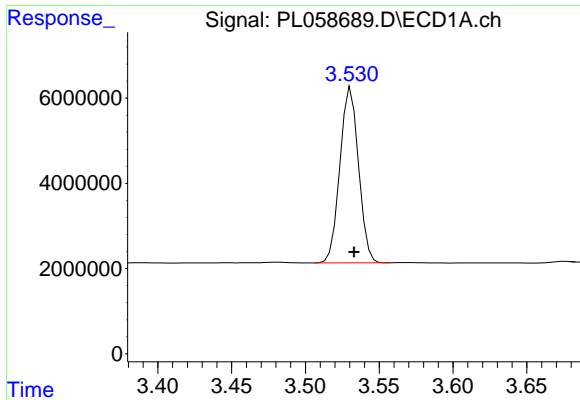
Data Path : Z:\pestpcbsrv\HPCHEM1\ECD\_L\Data\PL051320\  
 Data File : PL058689.D  
 Signal(s) : Signal #1: ECD1A.ch Signal #2: ECD2B.ch  
 Acq On : 13 May 2020 17:05  
 Operator : AJ\MA  
 Sample : L2182-08  
 Misc : 50 PPB CHLOR LOQ  
 ALS Vial : 20 Sample Multiplier: 1

Instrument :  
 ECD\_L  
 ClientSampled :  
 LOQ-WATER-02-QT2-2020

Integration File signal 1: autoint1.e  
 Integration File signal 2: autoint2.e  
 Quant Time: May 14 01:57:20 2020  
 Quant Method : Z:\pestpcbsrv\HPCHEM1\ECD\_L\methods\PL051220.M  
 Quant Title : GC Extractables  
 QLast Update : Wed May 13 09:14:54 2020  
 Response via : Initial Calibration  
 Integrator: ChemStation

Volume Inj. : 1 µl  
 Signal #1 Phase : ZB-MR2 Signal #2 Phase: ZB-MR1  
 Signal #1 Info : 30M x 0.32mm x0.2 Signal #2 Info : 30M x 0.32mm x0.5µm

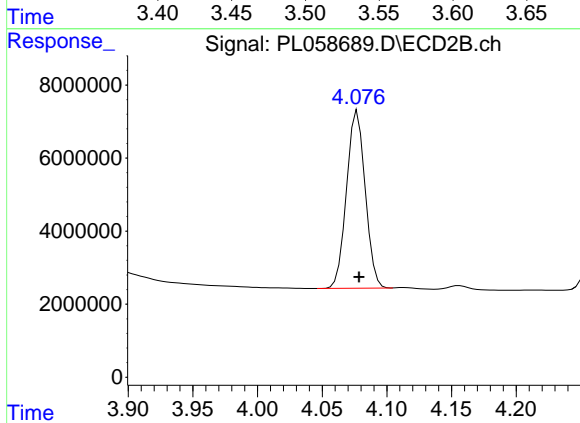




#1 Tetrachloro-m-xylene

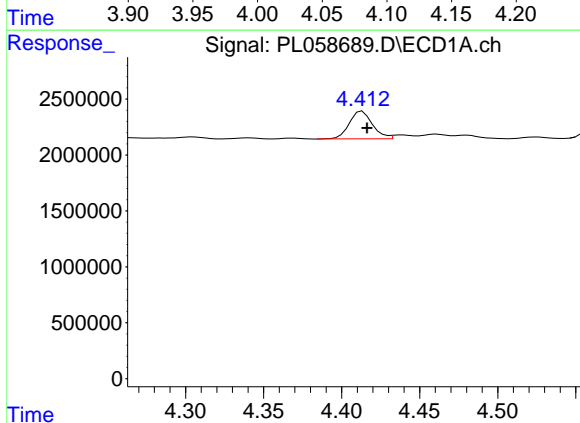
R.T.: 3.531 min  
 Delta R.T.: -0.002 min  
 Response: 36134061  
 Conc: 21.99 ng/ml

Instrument :  
 ECD\_L  
 ClientSampleId :  
 LOQ-WATER-02-QT2-2020



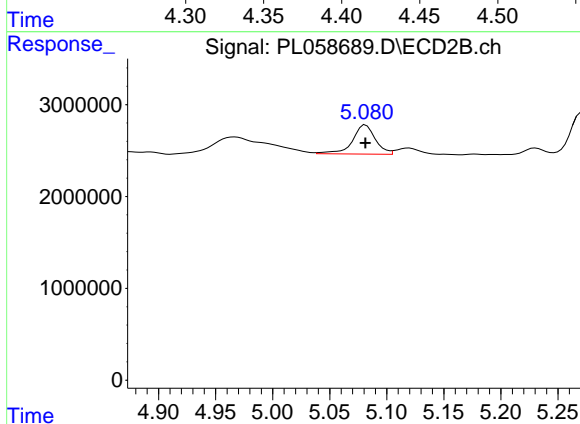
#1 Tetrachloro-m-xylene

R.T.: 4.077 min  
 Delta R.T.: -0.001 min  
 Response: 48745075  
 Conc: 22.52 ng/ml



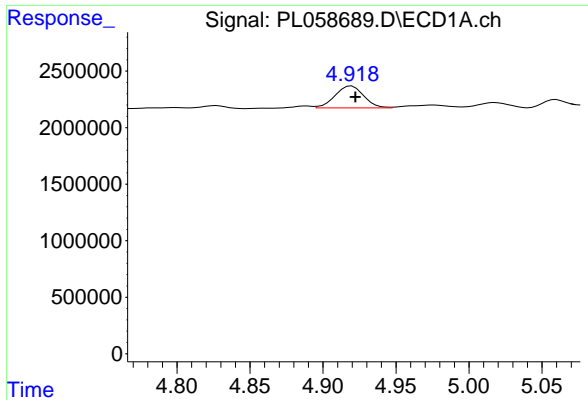
#23 Chlordane-1

R.T.: 4.413 min  
 Delta R.T.: -0.003 min  
 Response: 2572852  
 Conc: 51.30 ng/ml



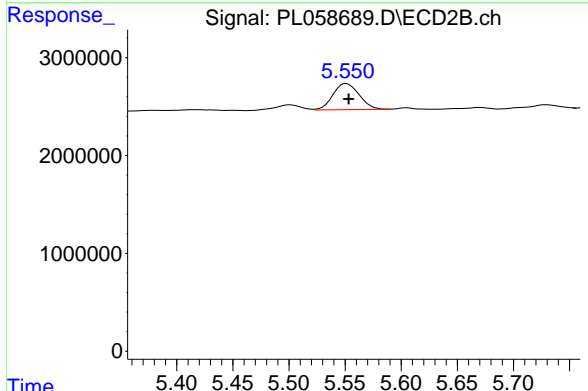
#23 Chlordane-1

R.T.: 5.082 min  
 Delta R.T.: 0.000 min  
 Response: 4423740  
 Conc: 55.28 ng/ml

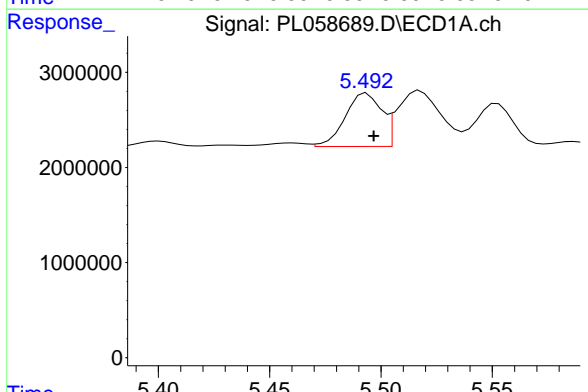


#24 Chlordane-2  
 R.T.: 4.920 min  
 Delta R.T.: -0.003 min  
 Response: 2634515  
 Conc: 48.50 ng/ml

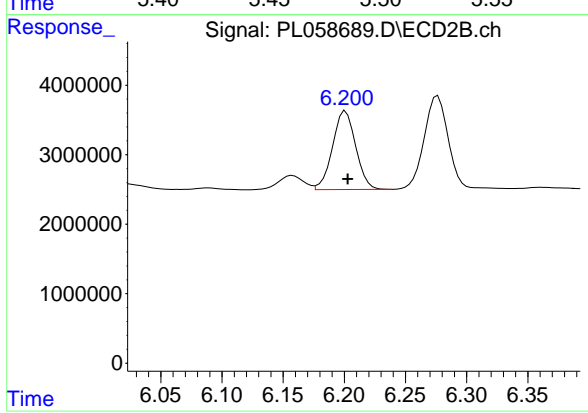
**Instrument :**  
 ECD\_L  
**ClientSampleId :**  
 LOQ-WATER-02-QT2-2020



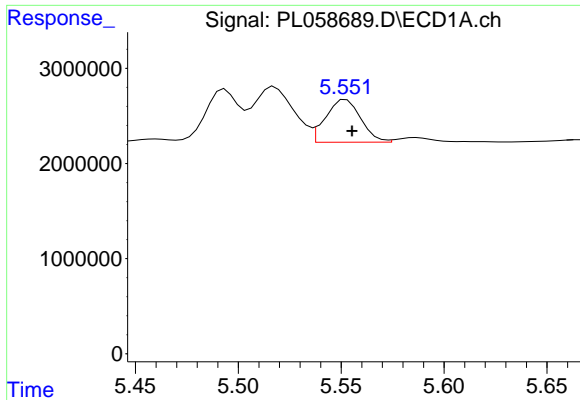
#24 Chlordane-2  
 R.T.: 5.552 min  
 Delta R.T.: -0.002 min  
 Response: 4318258  
 Conc: 50.53 ng/ml



#25 Chlordane-3  
 R.T.: 5.494 min  
 Delta R.T.: -0.003 min  
 Response: 6360923  
 Conc: 45.47 ng/ml

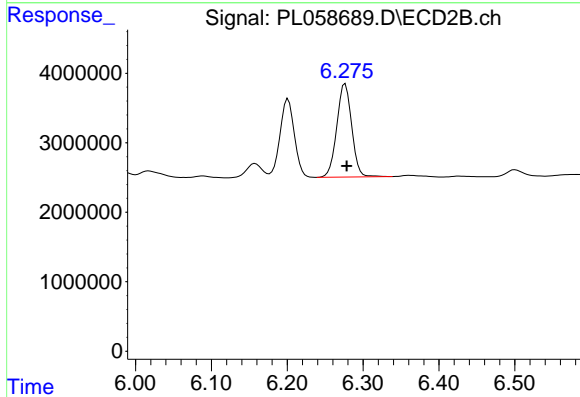


#25 Chlordane-3  
 R.T.: 6.201 min  
 Delta R.T.: -0.002 min  
 Response: 14864795  
 Conc: 49.08 ng/ml

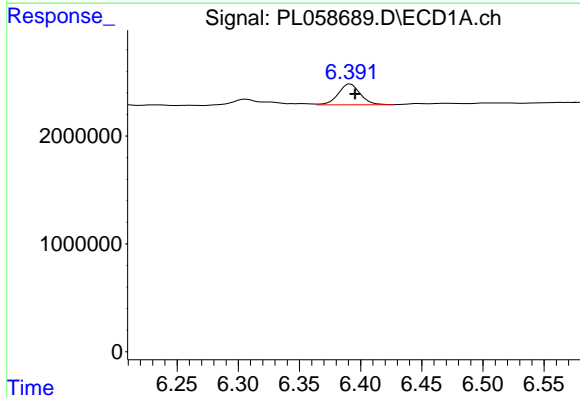


#26 Chlordane-4  
 R.T.: 5.552 min  
 Delta R.T.: -0.003 min  
 Response: 5331634  
 Conc: 46.45 ng/ml

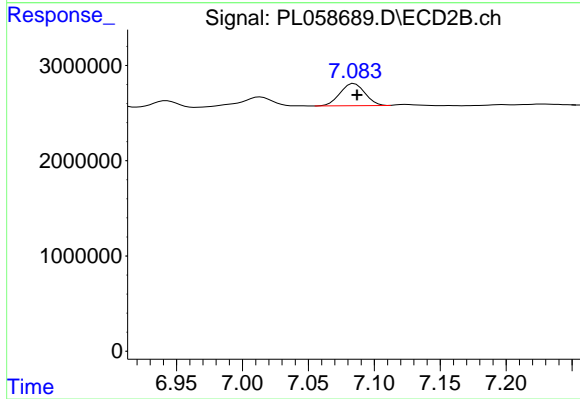
Instrument :  
 ECD\_L  
 ClientSampleId :  
 LOQ-WATER-02-QT2-2020



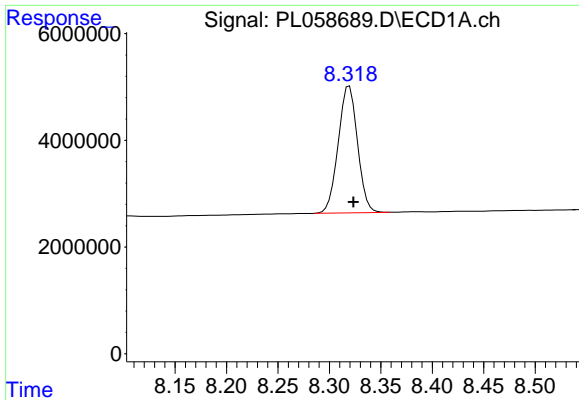
#26 Chlordane-4  
 R.T.: 6.276 min  
 Delta R.T.: -0.002 min  
 Response: 18323865  
 Conc: 50.28 ng/ml



#27 Chlordane-5  
 R.T.: 6.392 min  
 Delta R.T.: -0.004 min  
 Response: 2421943  
 Conc: 49.62 ng/ml

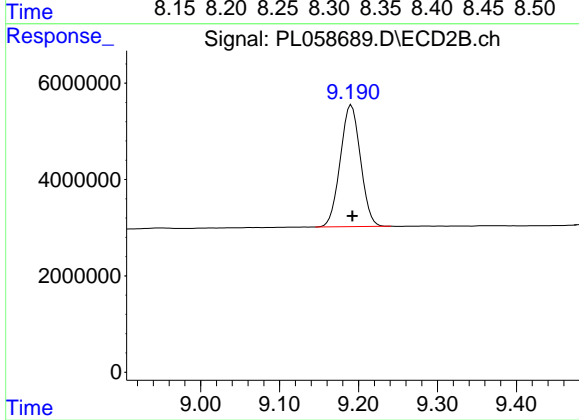


#27 Chlordane-5  
 R.T.: 7.085 min  
 Delta R.T.: -0.002 min  
 Response: 3060787  
 Conc: 49.03 ng/ml



#28 Decachlorobiphenyl  
R.T.: 8.319 min  
Delta R.T.: -0.004 min  
Response: 31066013  
Conc: 23.79 ng/ml

Instrument :  
ECD\_L  
ClientSampleId :  
LOQ-WATER-02-QT2-2020



#28 Decachlorobiphenyl  
R.T.: 9.191 min  
Delta R.T.: -0.001 min  
Response: 44933777  
Conc: 25.43 ng/ml