

Data Path : Z:\pestpcbsrv\HPCHEM1\ECD_L\Data\PL051320\
 Data File : PL058694.D
 Signal(s) : Signal #1: ECD1A.ch Signal #2: ECD2B.ch
 Acq On : 13 May 2020 18:15
 Operator : AJ\MA
 Sample : L2182-07
 Misc : 2.5 PPB LOD
 ALS Vial : 25 Sample Multiplier: 1

Instrument :
 ECD_L
 ClientSampleId :
 LOD-MDL-WATER-01-QT2-2020

Integration File signal 1: autoint1.e
 Integration File signal 2: autoint2.e
 Quant Time: May 14 01:58:59 2020
 Quant Method : Z:\pestpcbsrv\HPCHEM1\ECD_L\methods\PL051220.M
 Quant Title : GC Extractables
 QLast Update : Wed May 13 09:14:54 2020
 Response via : Initial Calibration
 Integrator: ChemStation

Volume Inj. : 1 µl
 Signal #1 Phase : ZB-MR2 Signal #2 Phase: ZB-MR1
 Signal #1 Info : 30M x 0.32mm x0.2 Signal #2 Info : 30M x 0.32mm x0.5µm

| | Compound | RT#1 | RT#2 | Resp#1 | Resp#2 | ng/ml | ng/ml |
|-----------------------------|-----------------|-------|-------|----------|----------|--------|--------|
| ----- | | | | | | | |
| System Monitoring Compounds | | | | | | | |
| 1) | SA Tetrachlo... | 3.532 | 4.077 | 31967391 | 45034616 | 19.459 | 20.805 |
| 28) | SA Decachlor... | 8.320 | 9.192 | 28797625 | 41692420 | 22.054 | 23.591 |
| Target Compounds | | | | | | | |
| 2) | A alpha-BHC | 3.974 | 4.470 | 5445003 | 6289549 | 2.365 | 2.054 |
| 3) | MA gamma-BHC... | 4.260 | 4.757 | 4415910 | 6428635 | 2.152 | 2.193 |
| 4) | MA Heptachlor | 4.569 | 5.272 | 4603913 | 7088706 | 2.437 | 2.529 |
| 5) | MB Aldrin | 4.819 | 5.580 | 3814926 | 6162130 | 2.291 | 2.475 |
| 6) | B beta-BHC | 4.510 | 4.925 | 2361383 | 3312115 | 2.664 | 2.497 |
| 7) | B delta-BHC | 4.717 | 5.145 | 4050253 | 7081218 | 2.178 | 2.496 |
| 8) | B Heptachlo... | 5.265 | 5.967 | 3802209 | 6813338 | 2.420 | 2.837 |
| 9) | A Endosulfan I | 5.606 | 6.326 | 3418641 | 5838416 | 2.360 | 2.713 |
| 10) | B gamma-Chl... | 5.494 | 6.201 | 3881801 | 6610775 | 2.498 | 2.814 |
| 11) | B alpha-Chl... | 5.552 | 6.275 | 3872550 | 6267546 | 2.487 | 2.674 |
| 12) | B 4,4'-DDE | 5.716 | 6.430 | 2975712 | 5004851 | 2.135 | 2.397 |
| 13) | MA Dieldrin | 5.851 | 6.584 | 3403539 | 5490207 | 2.285 | 2.502 |
| 14) | MA Endrin | 6.108 | 6.804 | 3014670 | 4553964 | 2.320 | 2.511 |
| 15) | B Endosulfa... | 6.382 | 7.011 | 3597401 | 6293070 | 2.609 | 3.151 |
| 16) | A 4,4'-DDD | 6.233 | 6.920 | 2647626 | 4563483 | 2.245 | 2.608 |
| 17) | MA 4,4'-DDT | 6.476 | 7.221 | 2803884 | 4327345 | 2.298 | 2.557 |
| 18) | B Endrin al... | 6.550 | 7.136 | 2886074 | 4439333 | 2.459 | 2.601 |
| 19) | B Endosulfa... | 6.763 | 7.359 | 3479675 | 4999325 | 2.625 | 2.671 |
| 20) | A Methoxychlor | 7.024 | 7.678 | 1802401 | 2587659 | 2.777 | 2.635 |
| 21) | B Endrin ke... | 7.256 | 7.832 | 3727093 | 5213892 | 2.513 | 2.588 |
| 22) | Mirex | 7.453 | 8.290 | 3824721 | 4452746 | 3.128 | 2.834 |

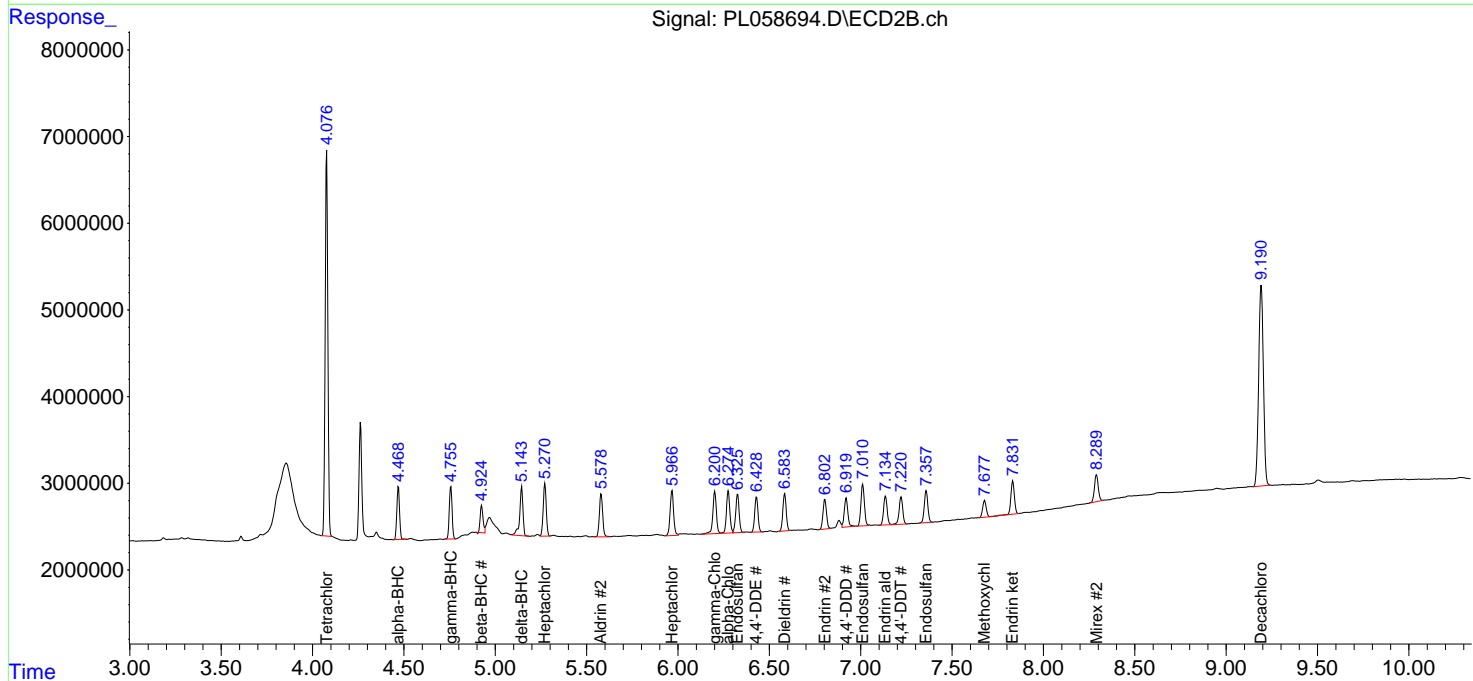
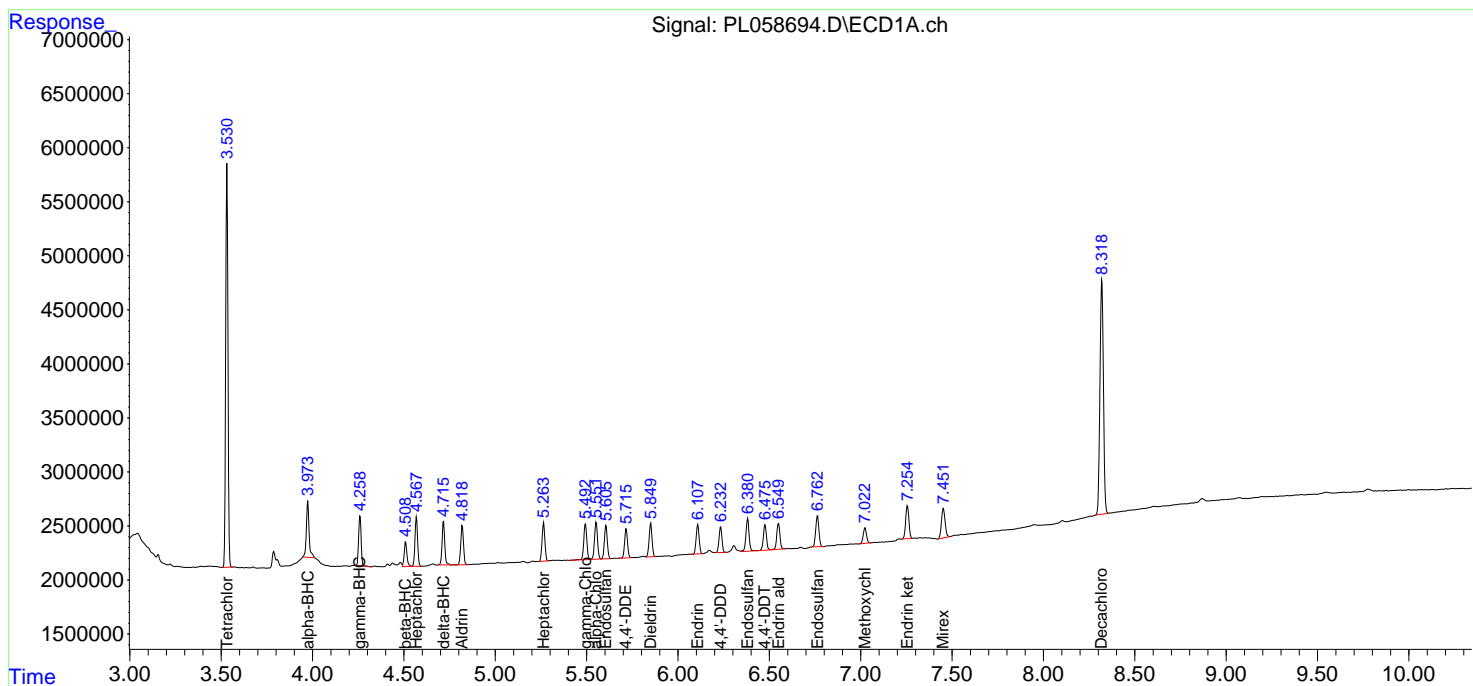
(f)=RT Delta > 1/2 Window (#)=Amounts differ by > 25% (m)=manual int.

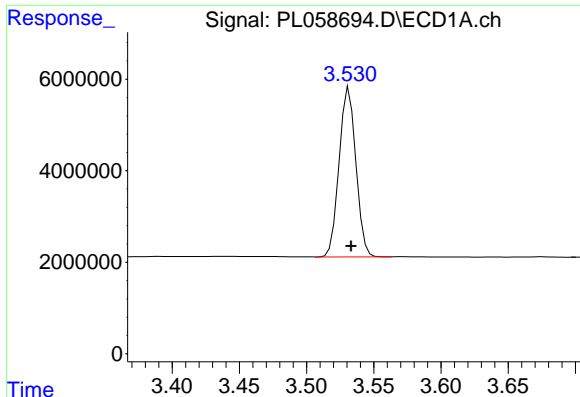
Data Path : Z:\pestpcbsrv\HPCHEM1\ECD_L\Data\PL051320\
 Data File : PL058694.D
 Signal(s) : Signal #1: ECD1A.ch Signal #2: ECD2B.ch
 Acq On : 13 May 2020 18:15
 Operator : AJ\MA
 Sample : L2182-07
 Misc : 2.5 PPB LOD
 ALS Vial : 25 Sample Multiplier: 1

Instrument :
 ECD_L
 Client Sampled :
 LOD-MDL-WATER-01-QT2-2020

Integration File signal 1: autoint1.e
 Integration File signal 2: autoint2.e
 Quant Time: May 14 01:58:59 2020
 Quant Method : Z:\pestpcbsrv\HPCHEM1\ECD_L\methods\PL051220.M
 Quant Title : GC Extractables
 QLast Update : Wed May 13 09:14:54 2020
 Response via : Initial Calibration
 Integrator: ChemStation

Volume Inj. : 1 µl
 Signal #1 Phase : ZB-MR2 Signal #2 Phase: ZB-MR1
 Signal #1 Info : 30M x 0.32mm x0.2 Signal #2 Info : 30M x 0.32mm x0.5µm

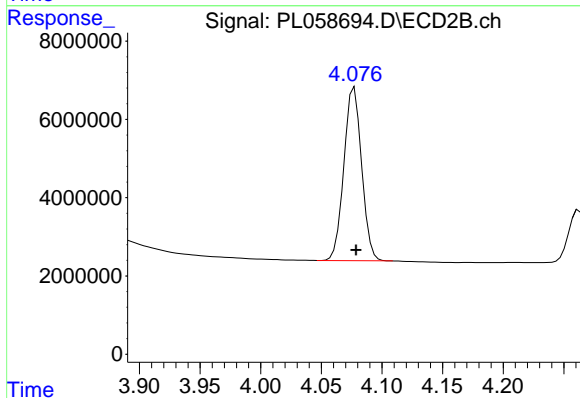




#1 Tetrachloro-m-xylene

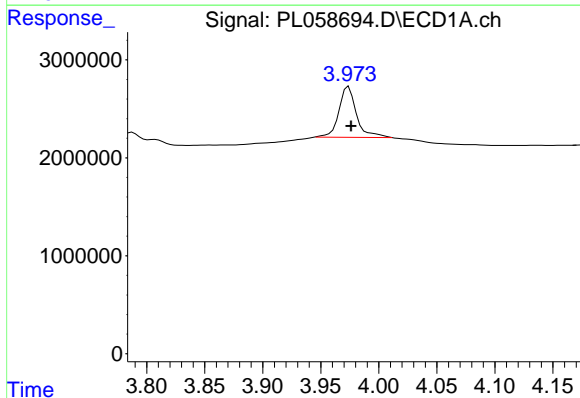
R.T.: 3.532 min
 Delta R.T.: -0.001 min
 Response: 31967391
 Conc: 19.46 ng/ml

Instrument :
 ECD_L
 ClientSampleId :
 LOD-MDL-WATER-01-QT2-2020



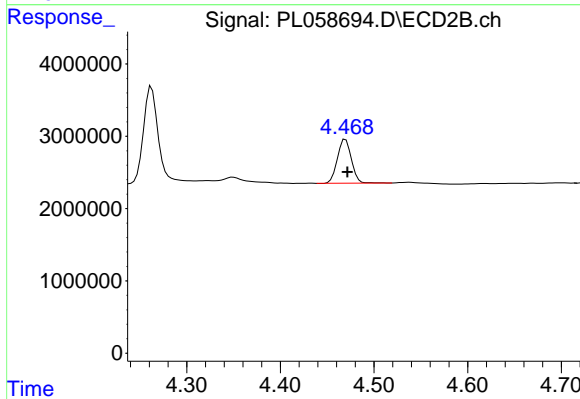
#1 Tetrachloro-m-xylene

R.T.: 4.077 min
 Delta R.T.: -0.001 min
 Response: 45034616
 Conc: 20.81 ng/ml



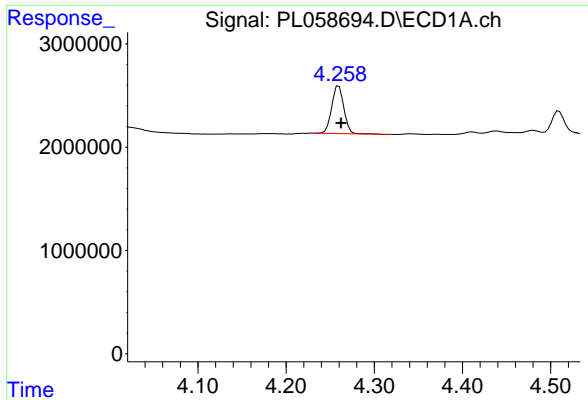
#2 alpha-BHC

R.T.: 3.974 min
 Delta R.T.: -0.002 min
 Response: 5445003
 Conc: 2.37 ng/ml



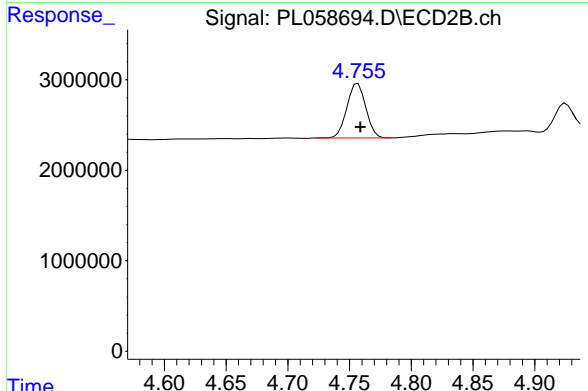
#2 alpha-BHC

R.T.: 4.470 min
 Delta R.T.: -0.002 min
 Response: 6289549
 Conc: 2.05 ng/ml

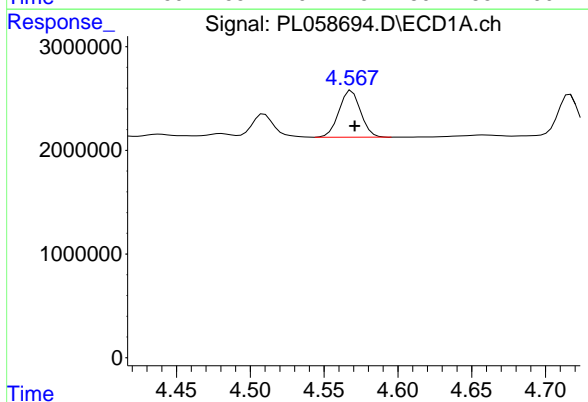


#3 gamma-BHC (Lindane)
 R.T.: 4.260 min
 Delta R.T.: -0.002 min
 Response: 4415910
 Conc: 2.15 ng/ml

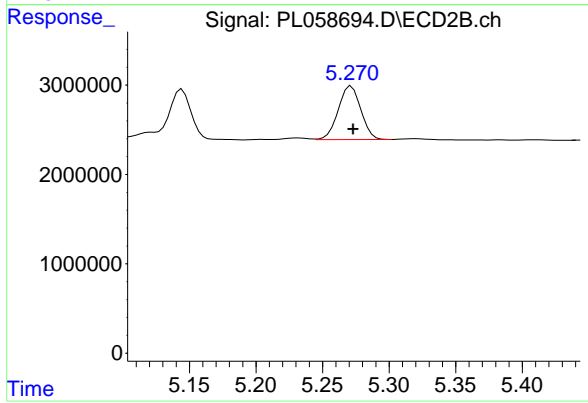
Instrument :
 ECD_L
 ClientSampleId :
 LOD-MDL-WATER-01-QT2-2020



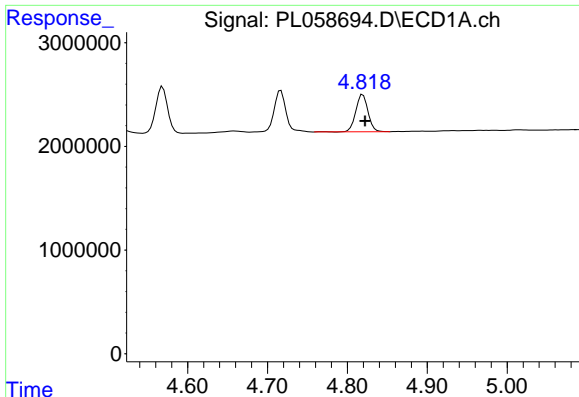
#3 gamma-BHC (Lindane)
 R.T.: 4.757 min
 Delta R.T.: -0.002 min
 Response: 6428635
 Conc: 2.19 ng/ml



#4 Heptachlor
 R.T.: 4.569 min
 Delta R.T.: -0.002 min
 Response: 4603913
 Conc: 2.44 ng/ml

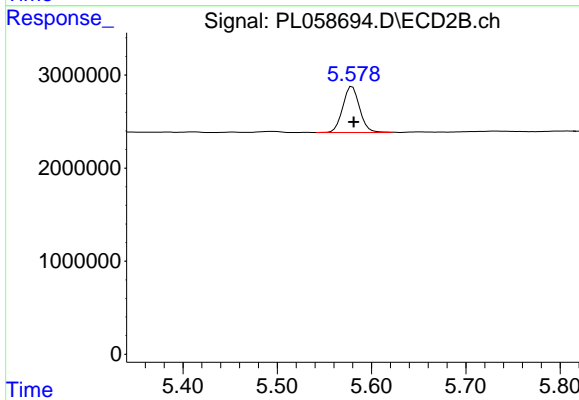


#4 Heptachlor
 R.T.: 5.272 min
 Delta R.T.: -0.001 min
 Response: 7088706
 Conc: 2.53 ng/ml

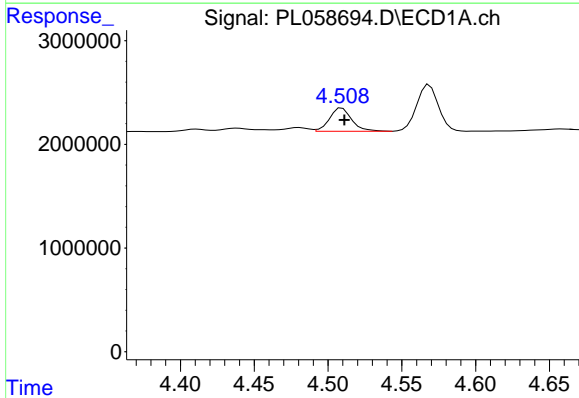


#5 Aldrin
 R.T.: 4.819 min
 Delta R.T.: -0.003 min
 Response: 3814926
 Conc: 2.29 ng/ml

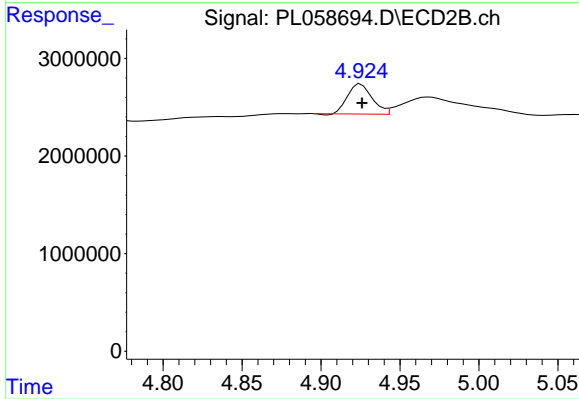
Instrument :
 ECD_L
 ClientSampleId :
 LOD-MDL-WATER-01-QT2-2020



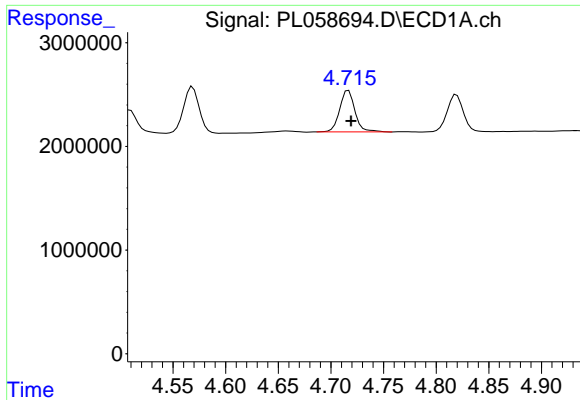
#5 Aldrin
 R.T.: 5.580 min
 Delta R.T.: -0.002 min
 Response: 6162130
 Conc: 2.47 ng/ml



#6 beta-BHC
 R.T.: 4.510 min
 Delta R.T.: -0.002 min
 Response: 2361383
 Conc: 2.66 ng/ml



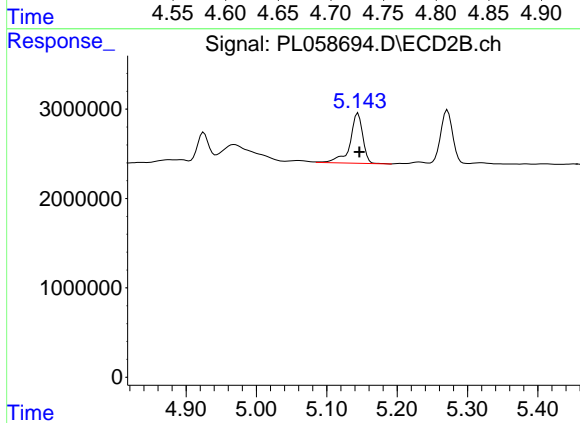
#6 beta-BHC
 R.T.: 4.925 min
 Delta R.T.: 0.000 min
 Response: 3312115
 Conc: 2.50 ng/ml



#7 delta-BHC

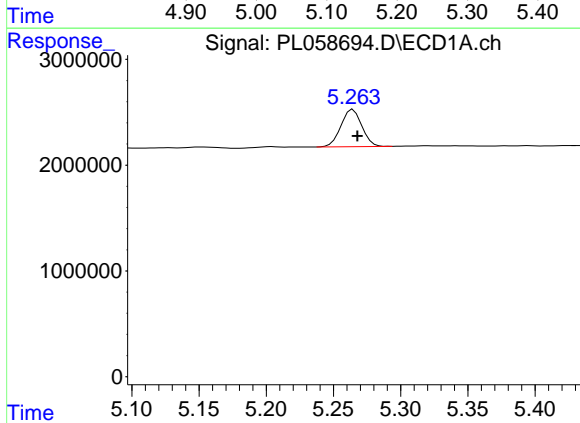
R.T.: 4.717 min
 Delta R.T.: -0.003 min
 Response: 4050253
 Conc: 2.18 ng/ml

Instrument :
 ECD_L
 ClientSampleId :
 LOD-MDL-WATER-01-QT2-2020



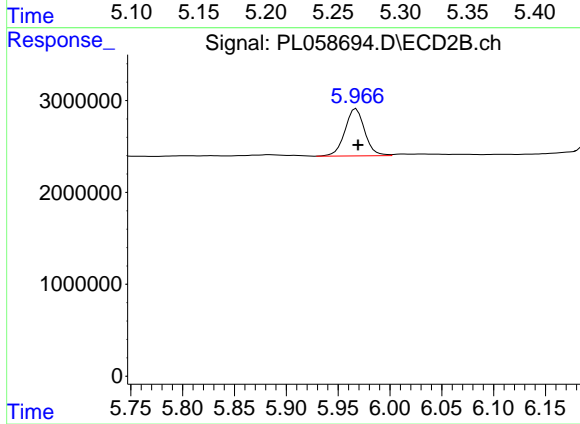
#7 delta-BHC

R.T.: 5.145 min
 Delta R.T.: -0.002 min
 Response: 7081218
 Conc: 2.50 ng/ml



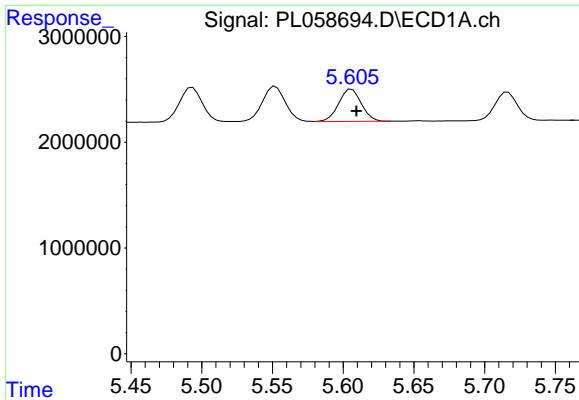
#8 Heptachlor epoxide

R.T.: 5.265 min
 Delta R.T.: -0.003 min
 Response: 3802209
 Conc: 2.42 ng/ml



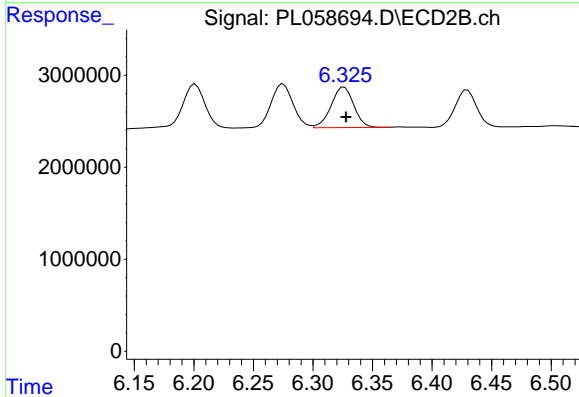
#8 Heptachlor epoxide

R.T.: 5.967 min
 Delta R.T.: -0.002 min
 Response: 6813338
 Conc: 2.84 ng/ml

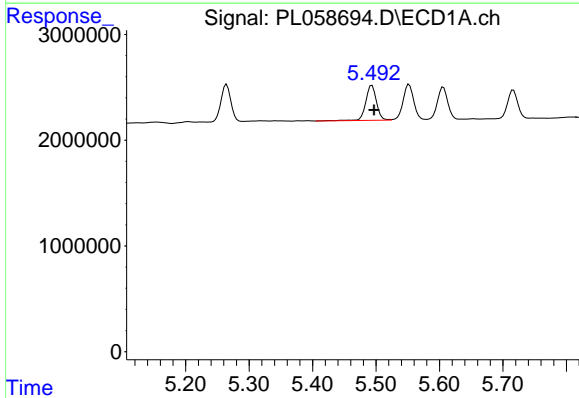


#9 Endosulfan I
 R.T.: 5.606 min
 Delta R.T.: -0.003 min
 Response: 3418641
 Conc: 2.36 ng/ml

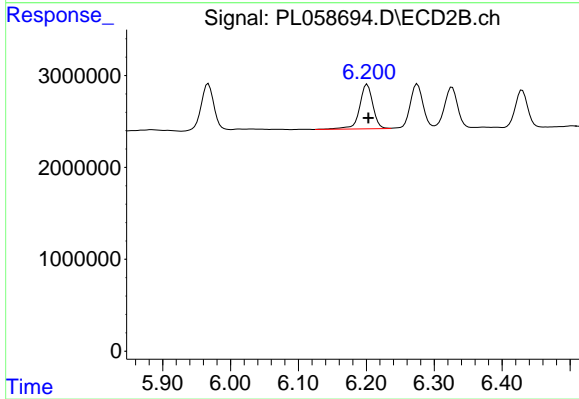
Instrument :
 ECD_L
 ClientSampleId :
 LOD-MDL-WATER-01-QT2-2020



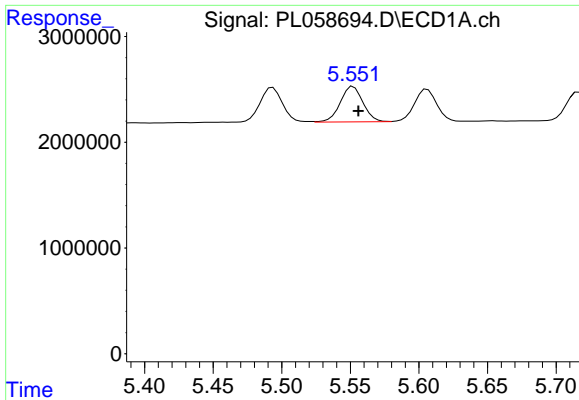
#9 Endosulfan I
 R.T.: 6.326 min
 Delta R.T.: -0.001 min
 Response: 5838416
 Conc: 2.71 ng/ml



#10 gamma-Chlordane
 R.T.: 5.494 min
 Delta R.T.: -0.004 min
 Response: 3881801
 Conc: 2.50 ng/ml

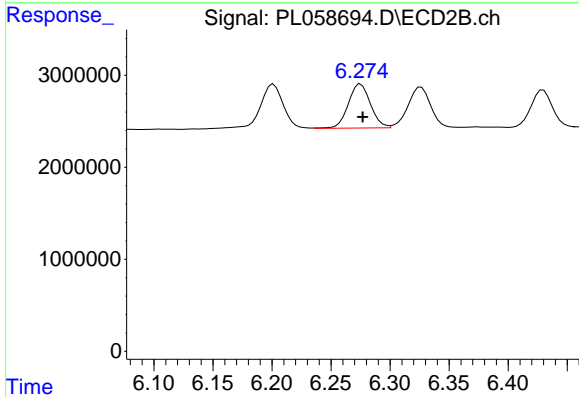


#10 gamma-Chlordane
 R.T.: 6.201 min
 Delta R.T.: -0.002 min
 Response: 6610775
 Conc: 2.81 ng/ml

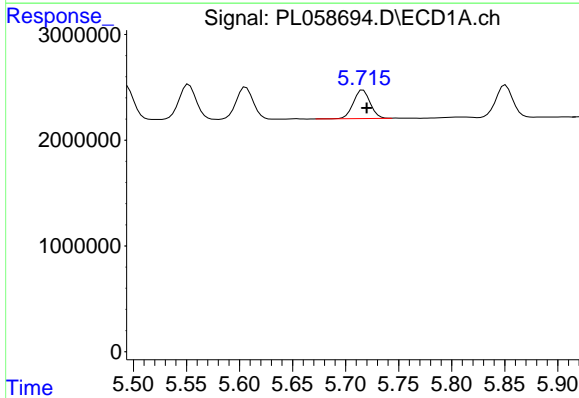


#11 alpha-Chlordane
 R.T.: 5.552 min
 Delta R.T.: -0.004 min
 Response: 3872550
 Conc: 2.49 ng/ml

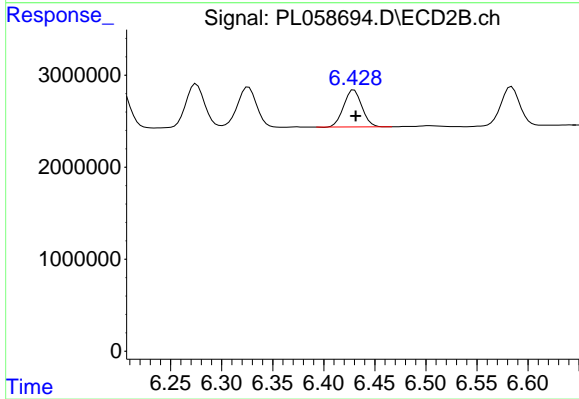
Instrument :
 ECD_L
 ClientSampleId :
 LOD-MDL-WATER-01-QT2-2020



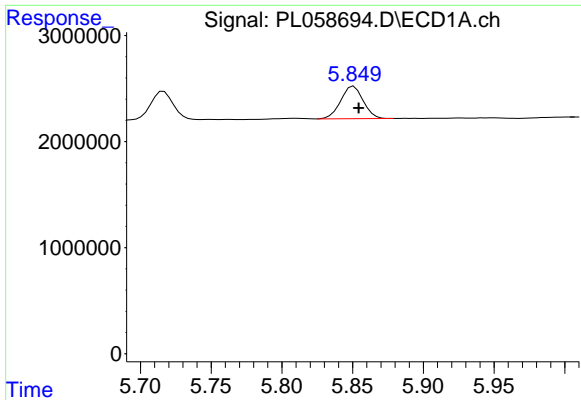
#11 alpha-Chlordane
 R.T.: 6.275 min
 Delta R.T.: -0.002 min
 Response: 6267546
 Conc: 2.67 ng/ml



#12 4,4'-DDE
 R.T.: 5.716 min
 Delta R.T.: -0.003 min
 Response: 2975712
 Conc: 2.14 ng/ml



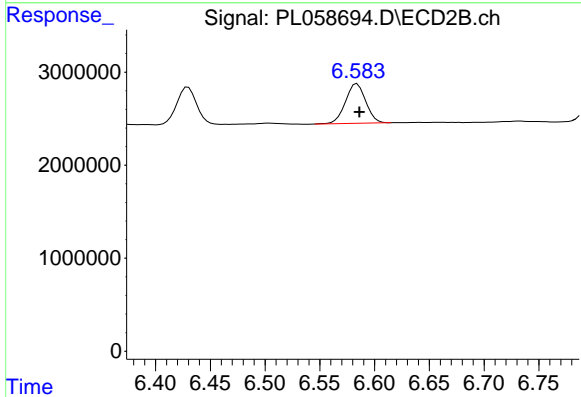
#12 4,4'-DDE
 R.T.: 6.430 min
 Delta R.T.: -0.002 min
 Response: 5004851
 Conc: 2.40 ng/ml



#13 Dieldrin

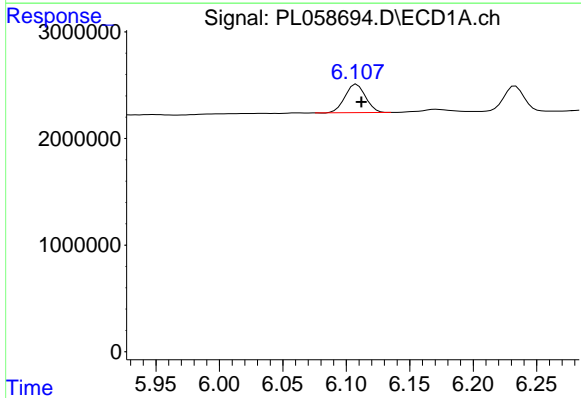
R.T.: 5.851 min
 Delta R.T.: -0.003 min
 Response: 3403539
 Conc: 2.29 ng/ml

Instrument :
 ECD_L
 ClientSampleId :
 LOD-MDL-WATER-01-QT2-2020



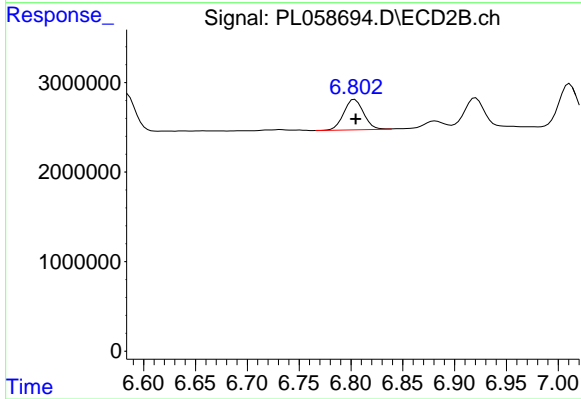
#13 Dieldrin

R.T.: 6.584 min
 Delta R.T.: -0.002 min
 Response: 5490207
 Conc: 2.50 ng/ml



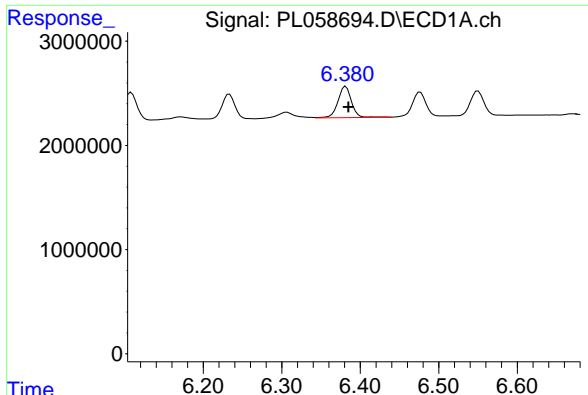
#14 Endrin

R.T.: 6.108 min
 Delta R.T.: -0.004 min
 Response: 3014670
 Conc: 2.32 ng/ml



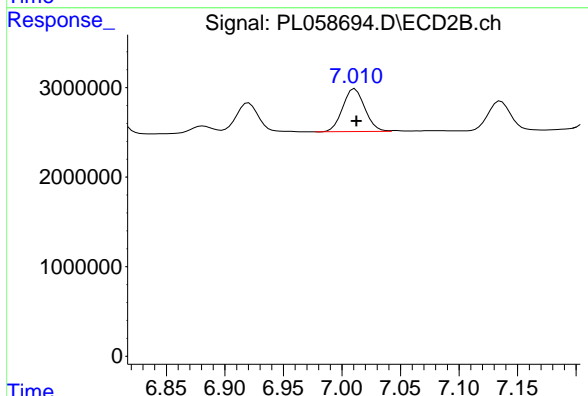
#14 Endrin

R.T.: 6.804 min
 Delta R.T.: 0.000 min
 Response: 4553964
 Conc: 2.51 ng/ml

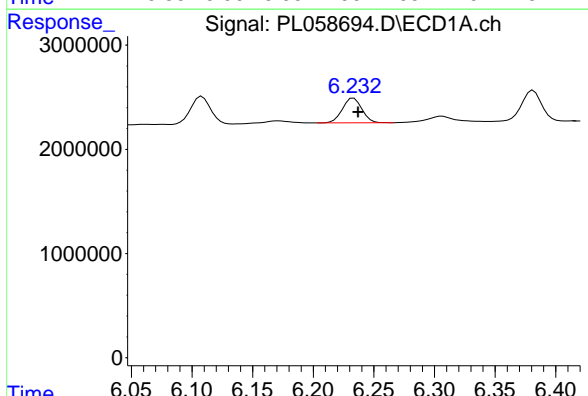


#15 Endosulfan II
 R.T.: 6.382 min
 Delta R.T.: -0.003 min
 Response: 3597401
 Conc: 2.61 ng/ml

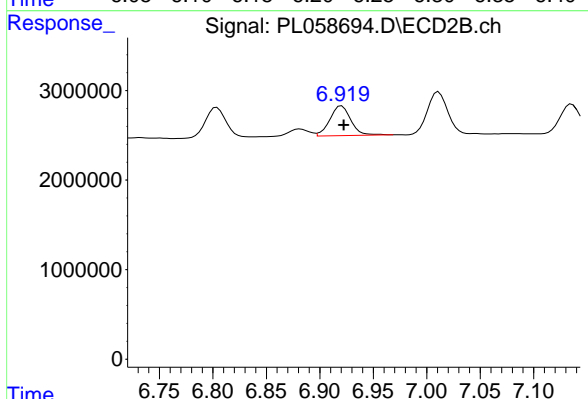
Instrument :
 ECD_L
 ClientSampleId :
 LOD-MDL-WATER-01-QT2-2020



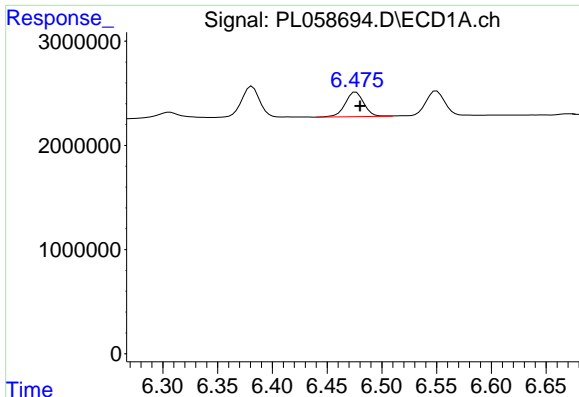
#15 Endosulfan II
 R.T.: 7.011 min
 Delta R.T.: -0.001 min
 Response: 6293070
 Conc: 3.15 ng/ml



#16 4,4'-DDD
 R.T.: 6.233 min
 Delta R.T.: -0.004 min
 Response: 2647626
 Conc: 2.24 ng/ml



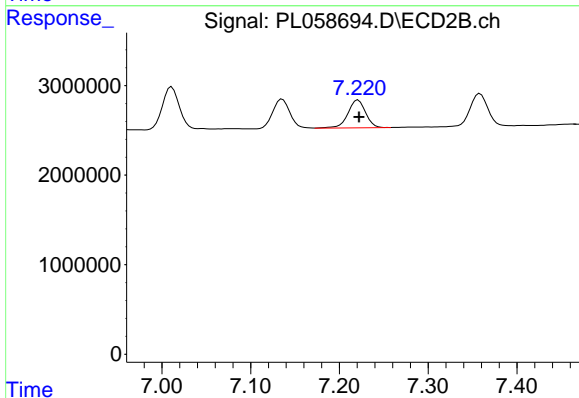
#16 4,4'-DDD
 R.T.: 6.920 min
 Delta R.T.: -0.002 min
 Response: 4563483
 Conc: 2.61 ng/ml



#17 4,4'-DDT

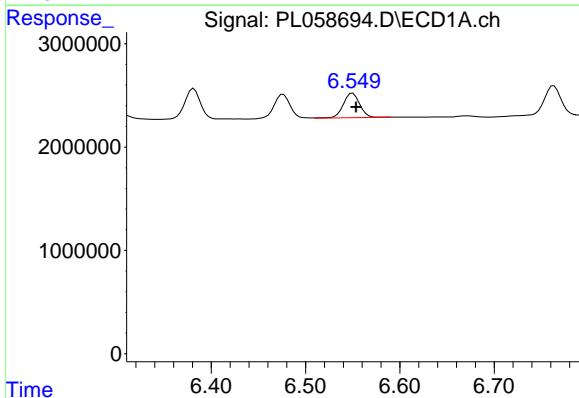
R.T.: 6.476 min
 Delta R.T.: -0.004 min
 Response: 2803884
 Conc: 2.30 ng/ml

Instrument :
 ECD_L
 ClientSampleId :
 LOD-MDL-WATER-01-QT2-2020



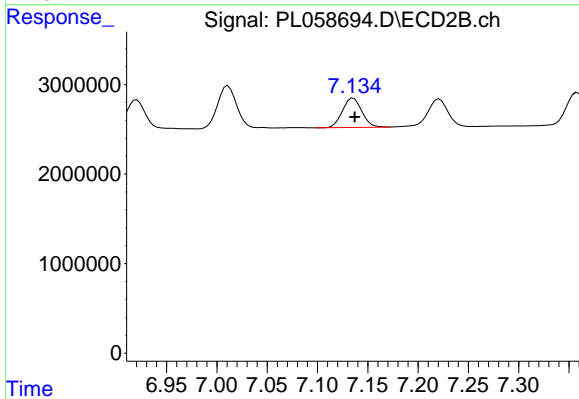
#17 4,4'-DDT

R.T.: 7.221 min
 Delta R.T.: -0.001 min
 Response: 4327345
 Conc: 2.56 ng/ml



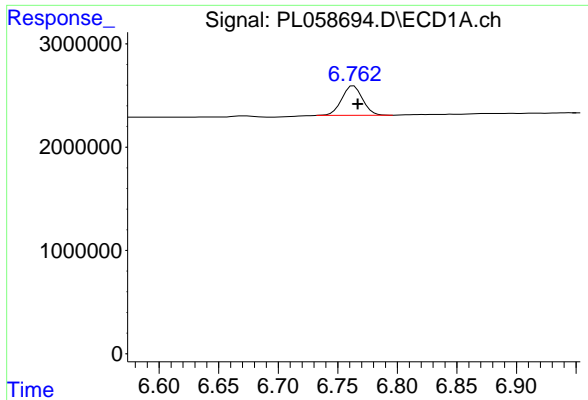
#18 Endrin aldehyde

R.T.: 6.550 min
 Delta R.T.: -0.003 min
 Response: 2886074
 Conc: 2.46 ng/ml



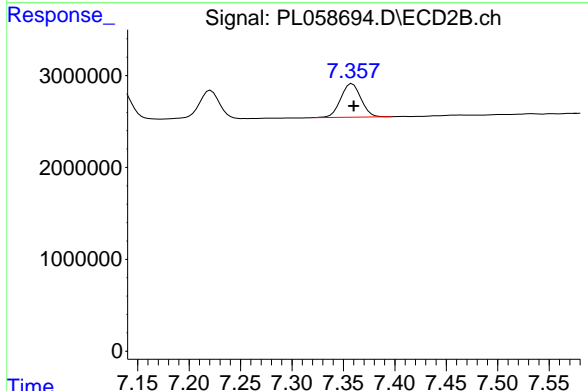
#18 Endrin aldehyde

R.T.: 7.136 min
 Delta R.T.: -0.001 min
 Response: 4439333
 Conc: 2.60 ng/ml

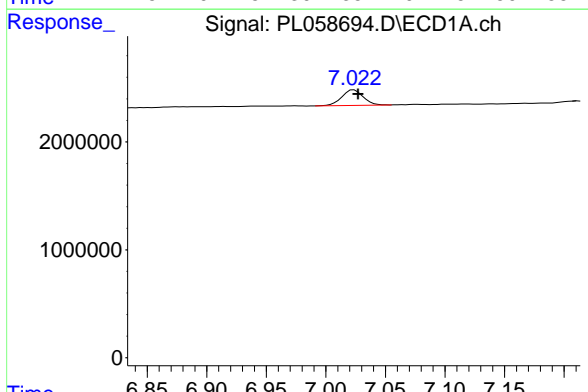


#19 Endosulfan Sulfate
 R.T.: 6.763 min
 Delta R.T.: -0.003 min
 Response: 3479675
 Conc: 2.63 ng/ml

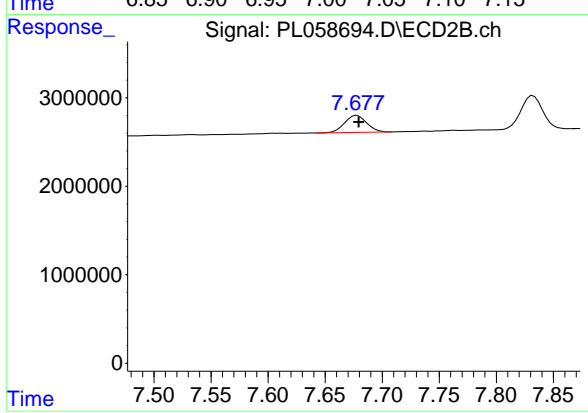
Instrument :
 ECD_L
ClientSampleId :
 LOD-MDL-WATER-01-QT2-2020



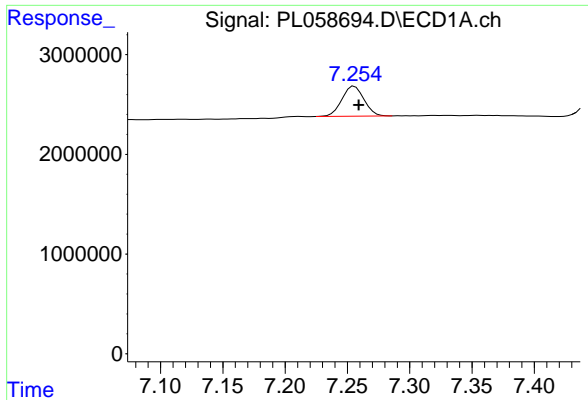
#19 Endosulfan Sulfate
 R.T.: 7.359 min
 Delta R.T.: -0.002 min
 Response: 4999325
 Conc: 2.67 ng/ml



#20 Methoxychlor
 R.T.: 7.024 min
 Delta R.T.: -0.004 min
 Response: 1802401
 Conc: 2.78 ng/ml

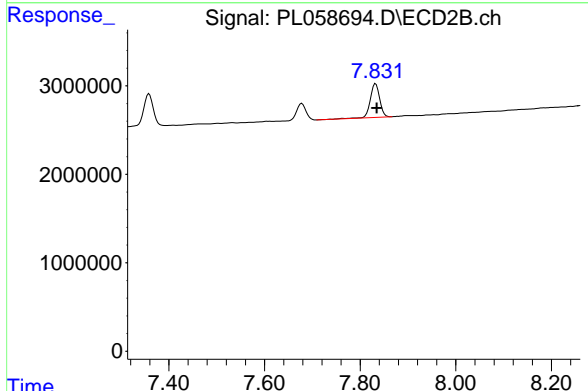


#20 Methoxychlor
 R.T.: 7.678 min
 Delta R.T.: -0.002 min
 Response: 2587659
 Conc: 2.63 ng/ml

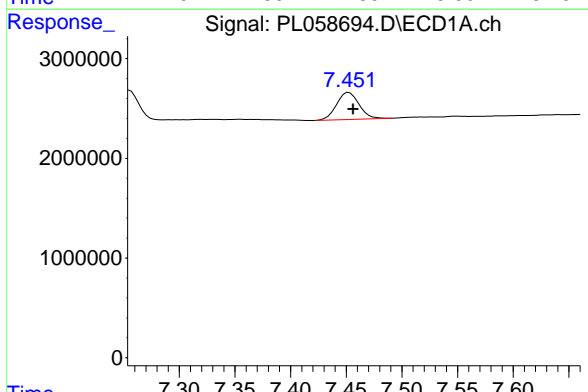


#21 Endrin ketone
 R.T.: 7.256 min
 Delta R.T.: -0.003 min
 Response: 3727093
 Conc: 2.51 ng/ml

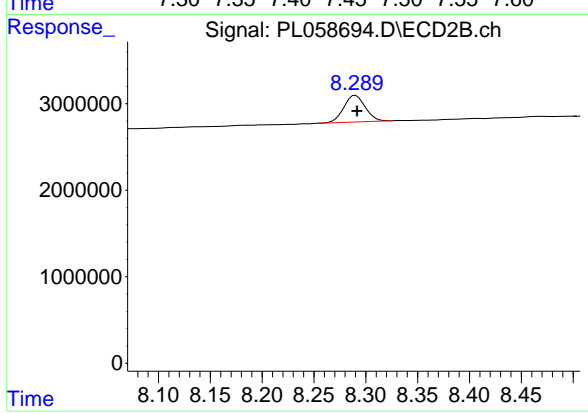
Instrument :
 ECD_L
ClientSampleId :
 LOD-MDL-WATER-01-QT2-2020



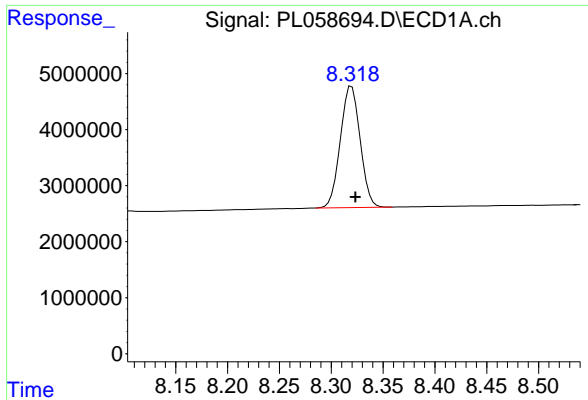
#21 Endrin ketone
 R.T.: 7.832 min
 Delta R.T.: -0.002 min
 Response: 5213892
 Conc: 2.59 ng/ml



#22 Mirex
 R.T.: 7.453 min
 Delta R.T.: -0.004 min
 Response: 3824721
 Conc: 3.13 ng/ml



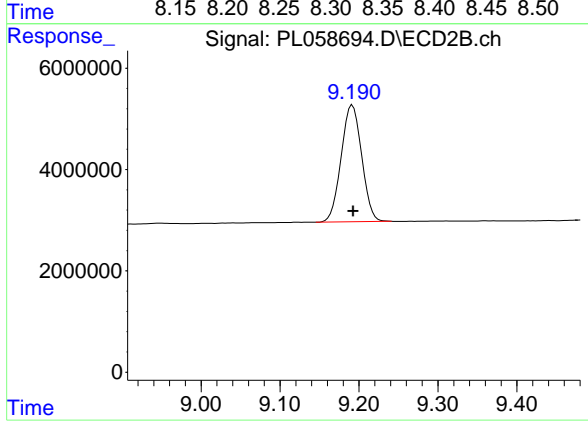
#22 Mirex
 R.T.: 8.290 min
 Delta R.T.: -0.001 min
 Response: 4452746
 Conc: 2.83 ng/ml



#28 Decachlorobiphenyl

R.T.: 8.320 min
Delta R.T.: -0.004 min
Response: 28797625
Conc: 22.05 ng/ml

Instrument :
ECD_L
ClientSampleId :
LOD-MDL-WATER-01-QT2-2020



#28 Decachlorobiphenyl

R.T.: 9.192 min
Delta R.T.: 0.000 min
Response: 41692420
Conc: 23.59 ng/ml