

Data Path : Z:\pestpcbsrv\HPCHEM1\ECD\_L\Data\PL051320\  
 Data File : PL058697.D  
 Signal(s) : Signal #1: ECD1A.ch Signal #2: ECD2B.ch  
 Acq On : 13 May 2020 18:58  
 Operator : AJ\MA  
 Sample : PSTDCCC050  
 Misc :  
 ALS Vial : 4 Sample Multiplier: 1

Instrument :  
 ECD\_L  
 ClientSampleId :  
 PSTDCCC050

Integration File signal 1: autoint1.e  
 Integration File signal 2: autoint2.e  
 Quant Time: May 14 01:59:53 2020  
 Quant Method : Z:\pestpcbsrv\HPCHEM1\ECD\_L\methods\PL051220.M  
 Quant Title : GC Extractables  
 QLast Update : Wed May 13 09:14:54 2020  
 Response via : Initial Calibration  
 Integrator: ChemStation

Volume Inj. : 1 µl  
 Signal #1 Phase : ZB-MR2 Signal #2 Phase: ZB-MR1  
 Signal #1 Info : 30M x 0.32mm x0.2 Signal #2 Info : 30M x 0.32mm x0.5µm

	Compound	RT#1	RT#2	Resp#1	Resp#2	ng/ml	ng/ml
-----							
System Monitoring Compounds							
1)	SA Tetrachlo...	3.532	4.077	75611934	108.2E6	46.025	49.999
28)	SA Decachlor...	8.319	9.191	65794541	93035353	50.388	52.643
Target Compounds							
2)	A alpha-BHC	3.974	4.470	108.4E6	159.1E6	47.103	51.962
3)	MA gamma-BHC...	4.260	4.757	97801944	151.9E6	47.670	51.806
4)	MA Heptachlor	4.569	5.272	91006845	146.5E6	48.172	52.268
5)	MB Aldrin	4.820	5.580	80276914	132.4E6	48.219	53.163
6)	B beta-BHC	4.510	4.925	41735328	67393817	47.078	50.810
7)	B delta-BHC	4.718	5.145	89671202	147.3E6	48.218	51.919
8)	B Heptachlo...	5.266	5.968	76023832	127.2E6	48.383	52.951
9)	A Endosulfan I	5.607	6.327	70197709	114.5E6	48.456	53.217
10)	B gamma-Chl...	5.494	6.202	75881190	125.5E6	48.839	53.418
11)	B alpha-Chl...	5.553	6.276	75650327	125.4E6	48.590	53.498
12)	B 4,4'-DDE	5.717	6.430	67916416	113.6E6	48.730	54.413
13)	MA Dieldrin	5.851	6.585	73243843	117.5E6	49.182	53.559
14)	MA Endrin	6.110	6.804	63730748	97269942	49.054	53.636
15)	B Endosulfa...	6.382	7.011	67603790	104.5E6	49.021	52.304
16)	A 4,4'-DDD	6.234	6.921	58659173	94413921	49.738	53.951
17)	MA 4,4'-DDT	6.477	7.222	59924729	92130350	49.108	54.431
18)	B Endrin al...	6.551	7.136	57304920	92082571	48.818	53.945
19)	B Endosulfa...	6.764	7.359	66013917	99586443	49.800	53.212
20)	A Methoxychlor	7.024	7.679	33654927	52456789	51.844	53.409
21)	B Endrin ke...	7.256	7.833	76033636	107.8E6	51.270	53.502
22)	Mirex	7.452	8.290	62168036	82277499	50.847	52.362

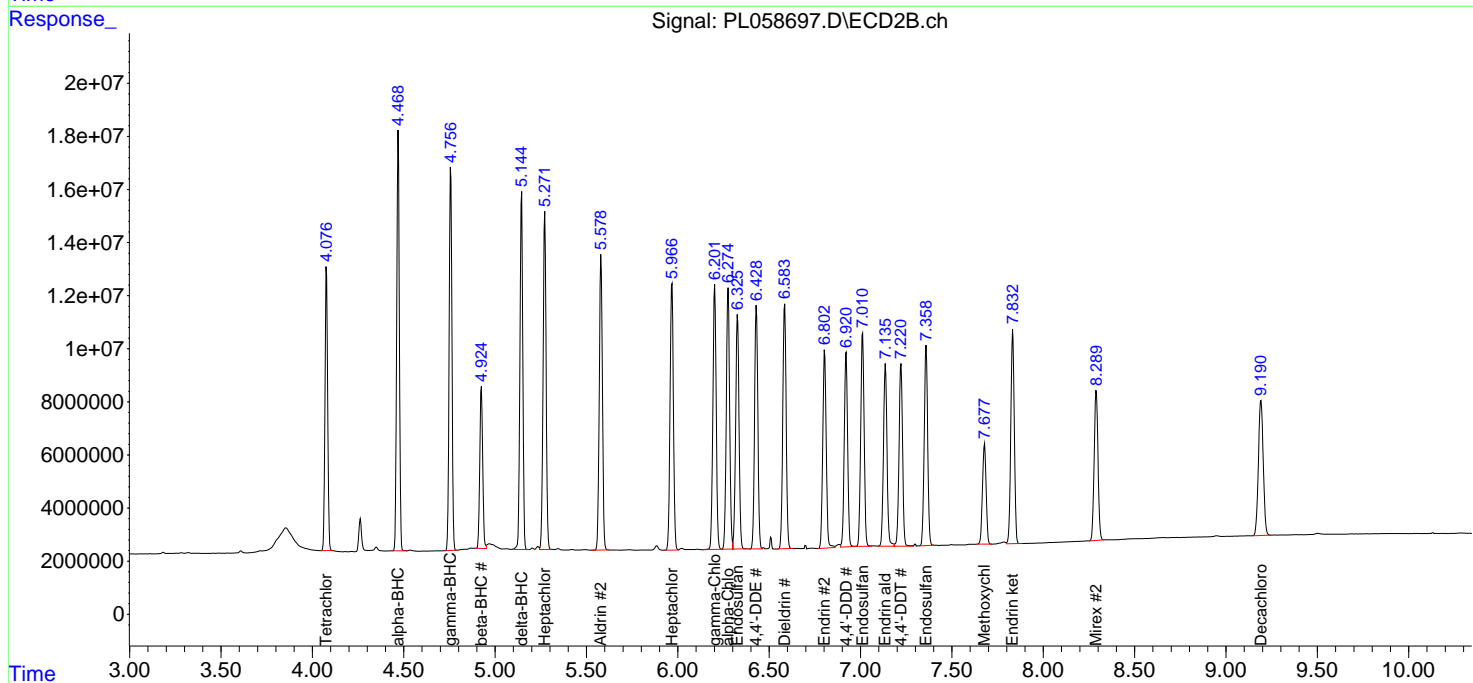
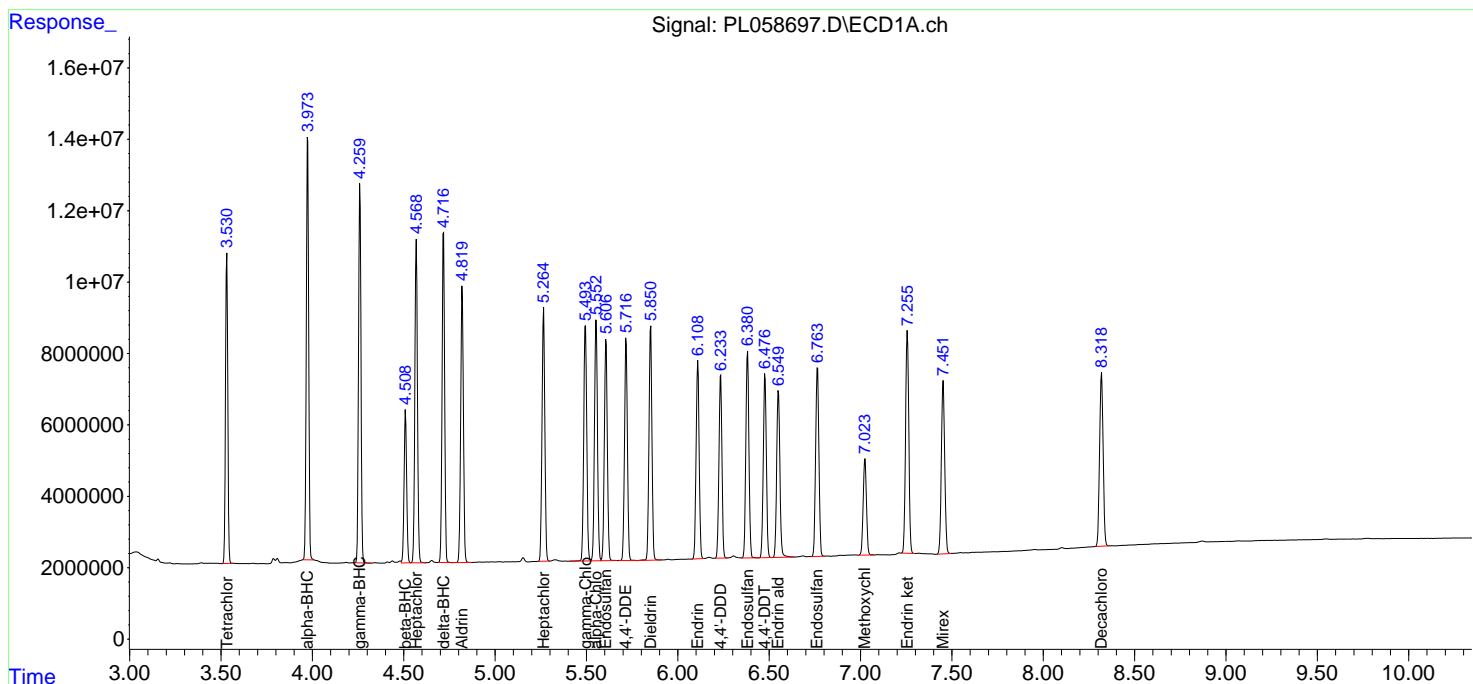
(f)=RT Delta > 1/2 Window (#)=Amounts differ by > 25% (m)=manual int.

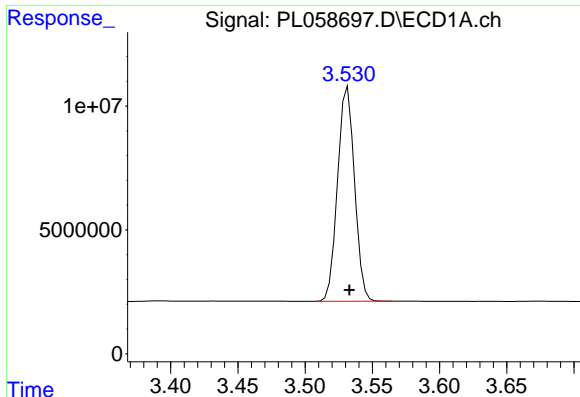
Data Path : Z:\pestpcbsrv\HPCHEM1\ECD\_L\Data\PL051320\  
 Data File : PL058697.D  
 Signal(s) : Signal #1: ECD1A.ch Signal #2: ECD2B.ch  
 Acq On : 13 May 2020 18:58  
 Operator : AJ\MA  
 Sample : PSTDCCC050  
 Misc :  
 ALS Vial : 4 Sample Multiplier: 1

Instrument :  
 ECD\_L  
 Client Sampled :  
 PSTDCCC050

Integration File signal 1: autoint1.e  
 Integration File signal 2: autoint2.e  
 Quant Time: May 14 01:59:53 2020  
 Quant Method : Z:\pestpcbsrv\HPCHEM1\ECD\_L\methods\PL051220.M  
 Quant Title : GC Extractables  
 QLast Update : Wed May 13 09:14:54 2020  
 Response via : Initial Calibration  
 Integrator: ChemStation

Volume Inj. : 1 µl  
 Signal #1 Phase : ZB-MR2 Signal #2 Phase: ZB-MR1  
 Signal #1 Info : 30M x 0.32mm x0.2 Signal #2 Info : 30M x 0.32mm x0.5µm

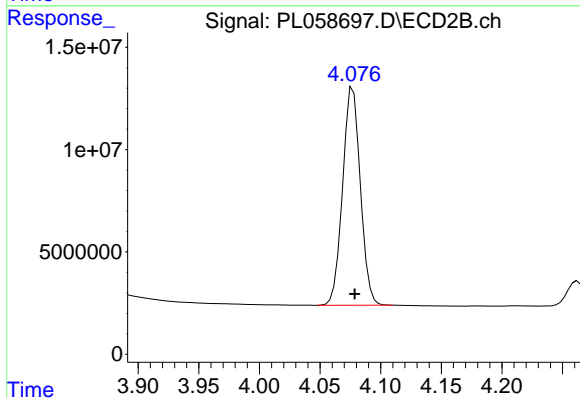




#1 Tetrachloro-m-xylene

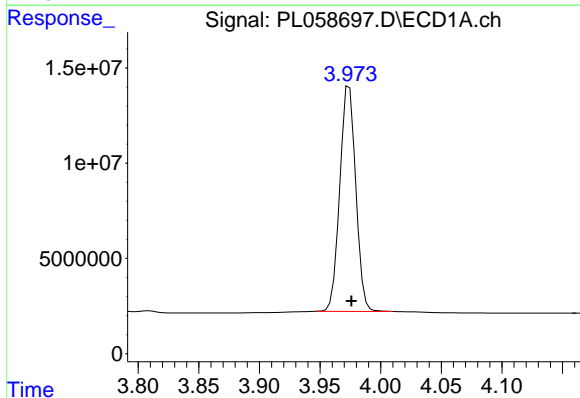
R.T.: 3.532 min  
 Delta R.T.: -0.001 min  
 Response: 75611934  
 Conc: 46.03 ng/ml

Instrument :  
 ECD\_L  
 ClientSampleId :  
 PSTDCCC050



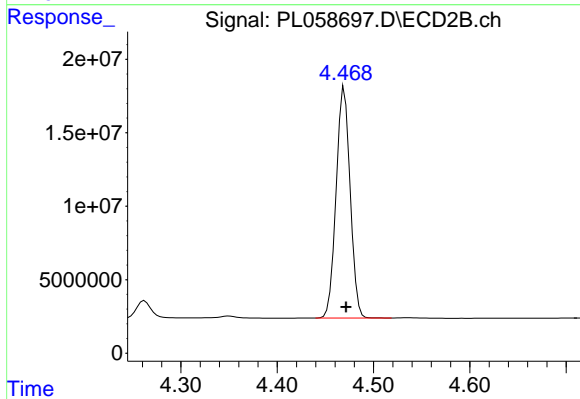
#1 Tetrachloro-m-xylene

R.T.: 4.077 min  
 Delta R.T.: -0.001 min  
 Response: 108227400  
 Conc: 50.00 ng/ml



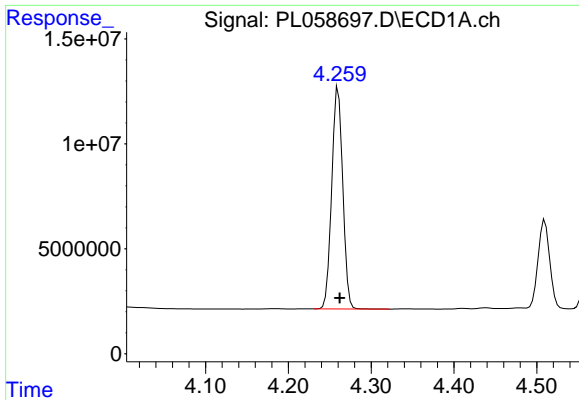
#2 alpha-BHC

R.T.: 3.974 min  
 Delta R.T.: -0.002 min  
 Response: 108433645  
 Conc: 47.10 ng/ml



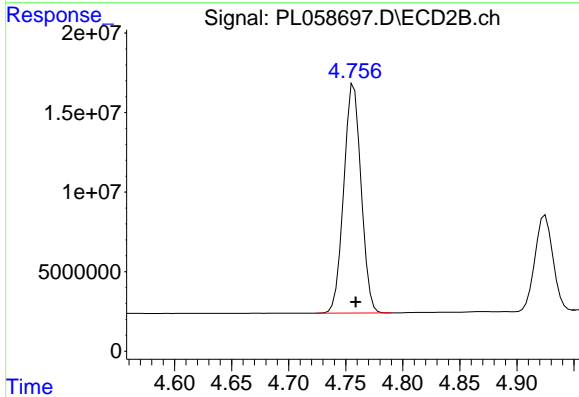
#2 alpha-BHC

R.T.: 4.470 min  
 Delta R.T.: -0.002 min  
 Response: 159102129  
 Conc: 51.96 ng/ml

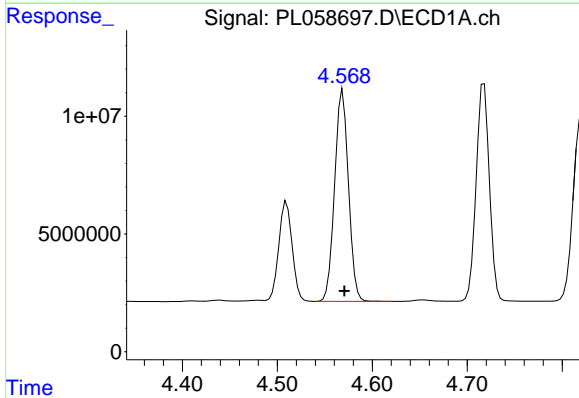


#3 gamma-BHC (Lindane)  
R.T.: 4.260 min  
Delta R.T.: -0.002 min  
Response: 97801944  
Conc: 47.67 ng/ml

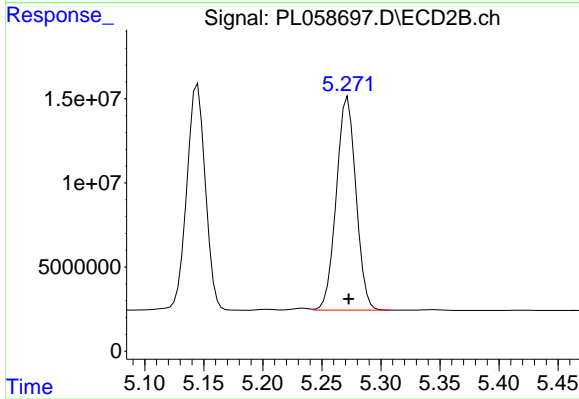
Instrument :  
ECD\_L  
ClientSampleId :  
PSTDCCC050



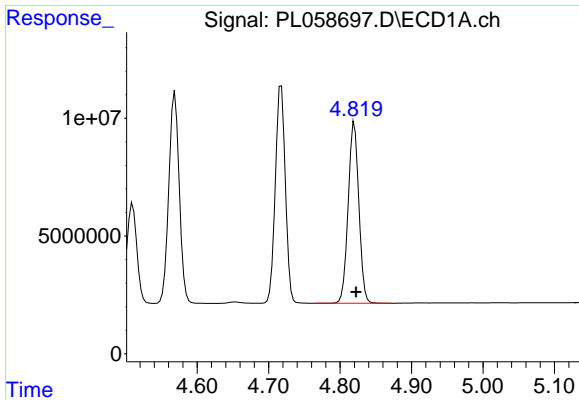
#3 gamma-BHC (Lindane)  
R.T.: 4.757 min  
Delta R.T.: -0.002 min  
Response: 151884941  
Conc: 51.81 ng/ml



#4 Heptachlor  
R.T.: 4.569 min  
Delta R.T.: -0.002 min  
Response: 91006845  
Conc: 48.17 ng/ml

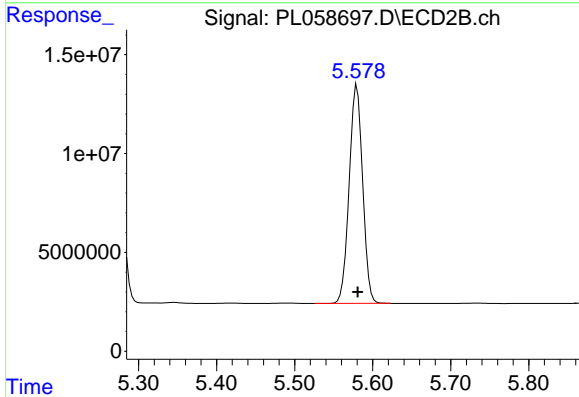


#4 Heptachlor  
R.T.: 5.272 min  
Delta R.T.: 0.000 min  
Response: 146479001  
Conc: 52.27 ng/ml

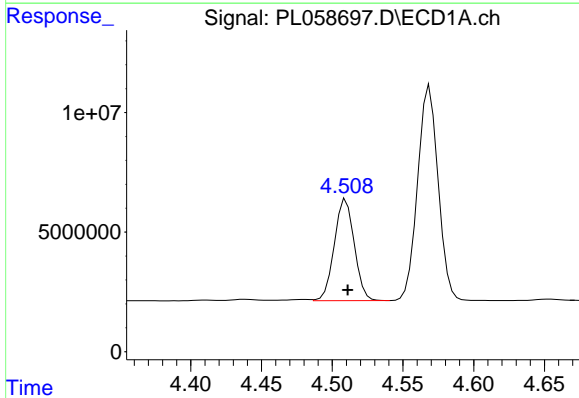


#5 Aldrin  
 R.T.: 4.820 min  
 Delta R.T.: -0.002 min  
 Response: 80276914  
 Conc: 48.22 ng/ml

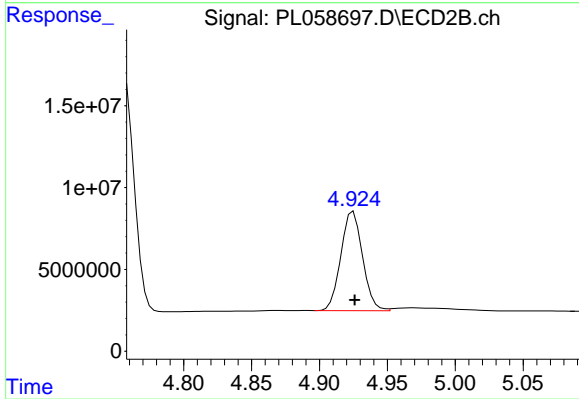
Instrument :  
 ECD\_L  
 ClientSampleId :  
 PSTDCCC050



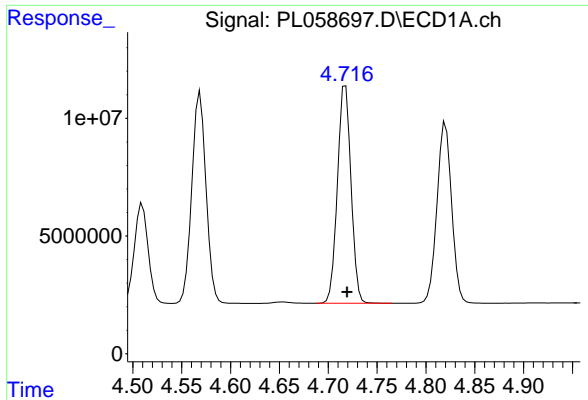
#5 Aldrin  
 R.T.: 5.580 min  
 Delta R.T.: -0.001 min  
 Response: 132377881  
 Conc: 53.16 ng/ml



#6 beta-BHC  
 R.T.: 4.510 min  
 Delta R.T.: -0.001 min  
 Response: 41735328  
 Conc: 47.08 ng/ml

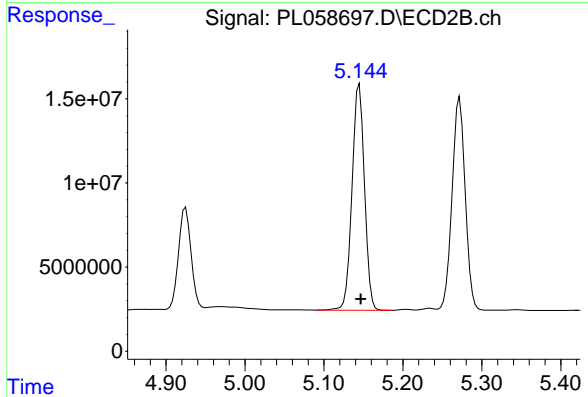


#6 beta-BHC  
 R.T.: 4.925 min  
 Delta R.T.: -0.001 min  
 Response: 67393817  
 Conc: 50.81 ng/ml

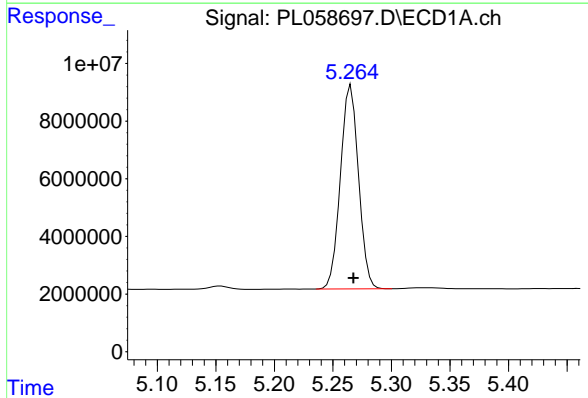


#7 delta-BHC  
 R.T.: 4.718 min  
 Delta R.T.: -0.002 min  
 Response: 89671202  
 Conc: 48.22 ng/ml

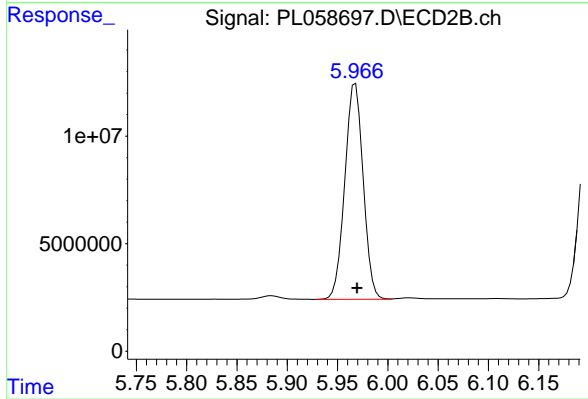
Instrument :  
 ECD\_L  
 ClientSampleId :  
 PSTDCCC050



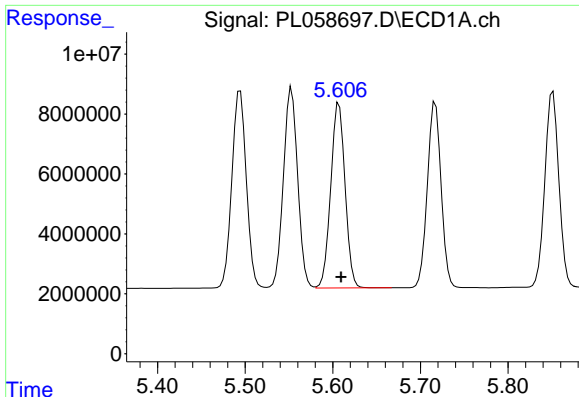
#7 delta-BHC  
 R.T.: 5.145 min  
 Delta R.T.: -0.002 min  
 Response: 147321615  
 Conc: 51.92 ng/ml



#8 Heptachlor epoxide  
 R.T.: 5.266 min  
 Delta R.T.: -0.002 min  
 Response: 76023832  
 Conc: 48.38 ng/ml



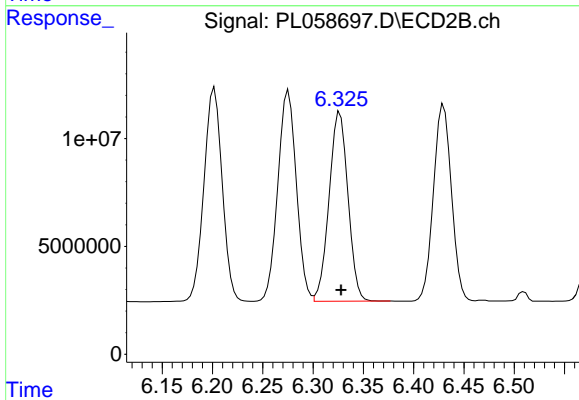
#8 Heptachlor epoxide  
 R.T.: 5.968 min  
 Delta R.T.: -0.001 min  
 Response: 127153555  
 Conc: 52.95 ng/ml



#9 Endosulfan I

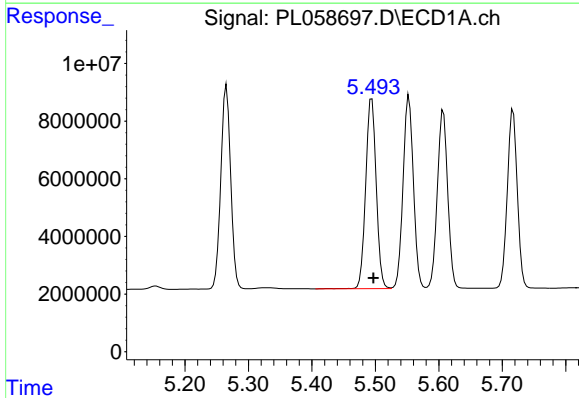
R.T.: 5.607 min  
 Delta R.T.: -0.002 min  
 Response: 70197709  
 Conc: 48.46 ng/ml

Instrument :  
 ECD\_L  
 ClientSampleId :  
 PSTDCCC050



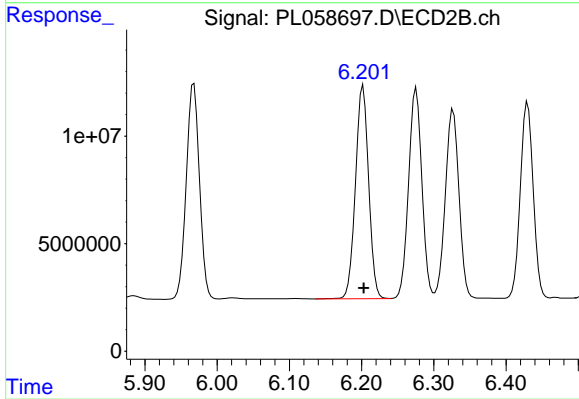
#9 Endosulfan I

R.T.: 6.327 min  
 Delta R.T.: -0.001 min  
 Response: 114525221  
 Conc: 53.22 ng/ml



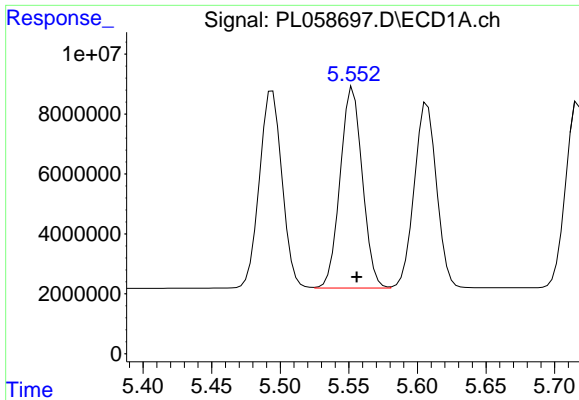
#10 gamma-Chlordane

R.T.: 5.494 min  
 Delta R.T.: -0.003 min  
 Response: 75881190  
 Conc: 48.84 ng/ml



#10 gamma-Chlordane

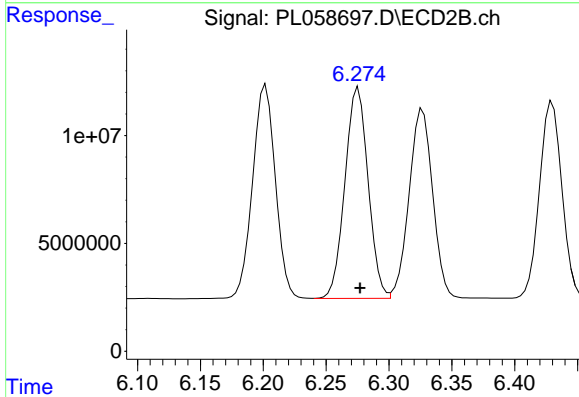
R.T.: 6.202 min  
 Delta R.T.: -0.001 min  
 Response: 125482542  
 Conc: 53.42 ng/ml



#11 alpha-Chlordane

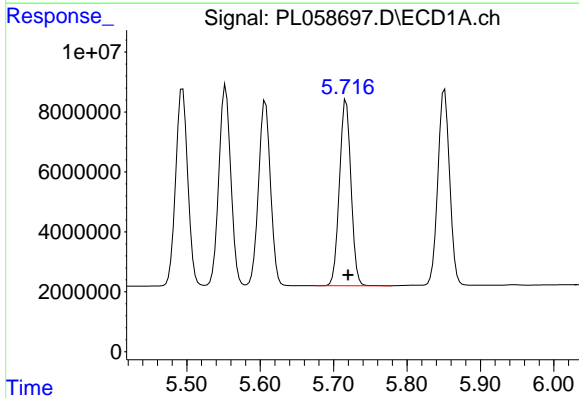
R.T.: 5.553 min  
Delta R.T.: -0.003 min  
Response: 75650327  
Conc: 48.59 ng/ml

Instrument :  
ECD\_L  
ClientSampleId :  
PSTDCCC050



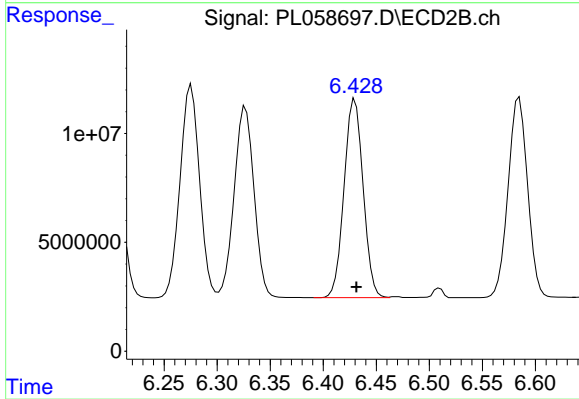
#11 alpha-Chlordane

R.T.: 6.276 min  
Delta R.T.: -0.001 min  
Response: 125406180  
Conc: 53.50 ng/ml



#12 4,4'-DDE

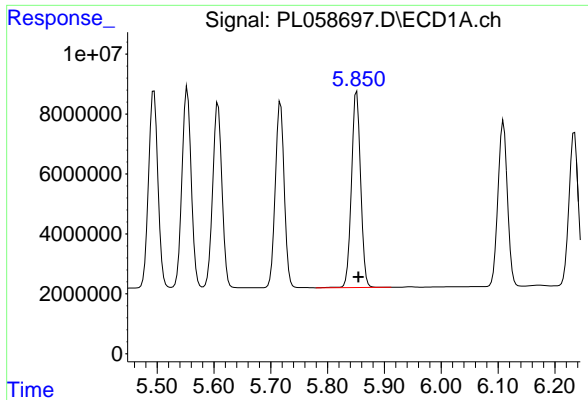
R.T.: 5.717 min  
Delta R.T.: -0.003 min  
Response: 67916416  
Conc: 48.73 ng/ml



#12 4,4'-DDE

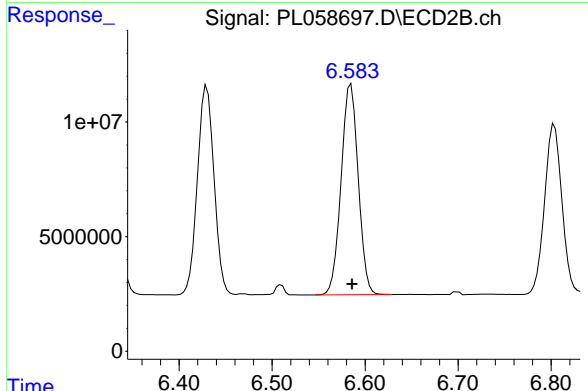
R.T.: 6.430 min  
Delta R.T.: -0.001 min  
Response: 113631919  
Conc: 54.41 ng/ml



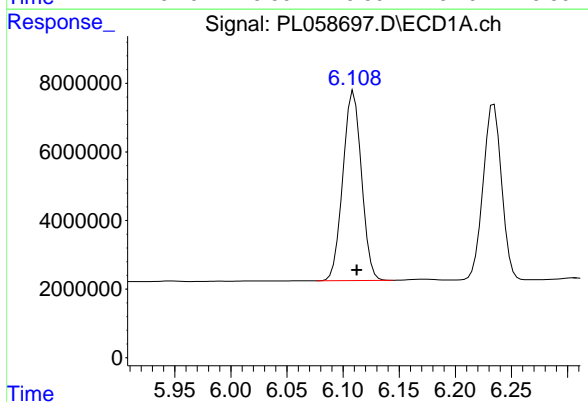


#13 Dieldrin  
 R.T.: 5.851 min  
 Delta R.T.: -0.003 min  
 Response: 73243843  
 Conc: 49.18 ng/ml

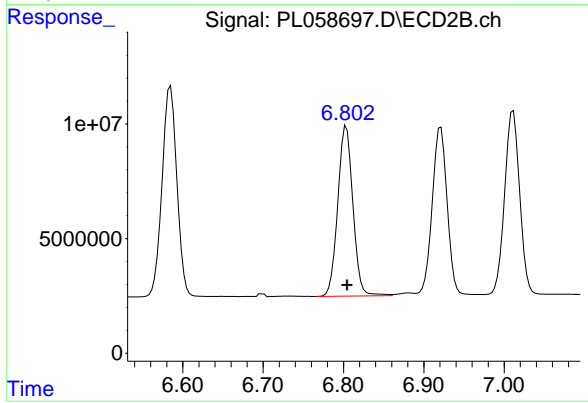
Instrument :  
 ECD\_L  
 ClientSampleId :  
 PSTDCCC050



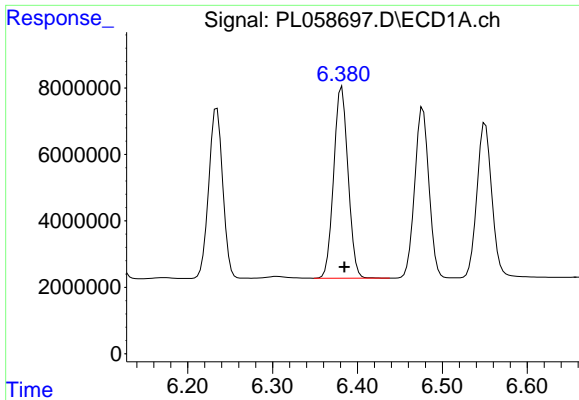
#13 Dieldrin  
 R.T.: 6.585 min  
 Delta R.T.: -0.001 min  
 Response: 117533191  
 Conc: 53.56 ng/ml



#14 Endrin  
 R.T.: 6.110 min  
 Delta R.T.: -0.002 min  
 Response: 63730748  
 Conc: 49.05 ng/ml



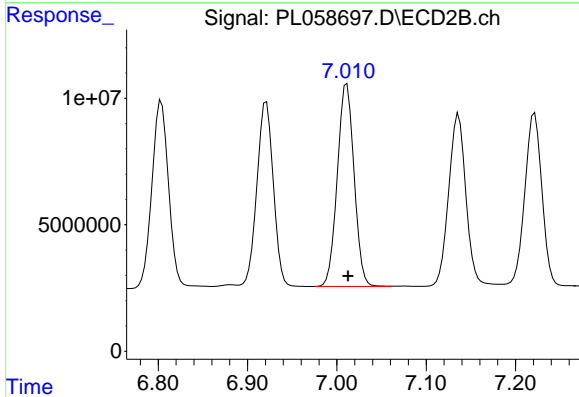
#14 Endrin  
 R.T.: 6.804 min  
 Delta R.T.: -0.001 min  
 Response: 97269942  
 Conc: 53.64 ng/ml



#15 Endosulfan II

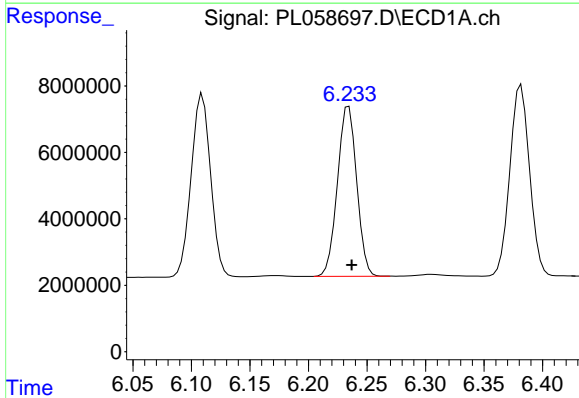
R.T.: 6.382 min  
 Delta R.T.: -0.003 min  
 Response: 67603790  
 Conc: 49.02 ng/ml

Instrument :  
 ECD\_L  
 ClientSampleId :  
 PSTDCCC050



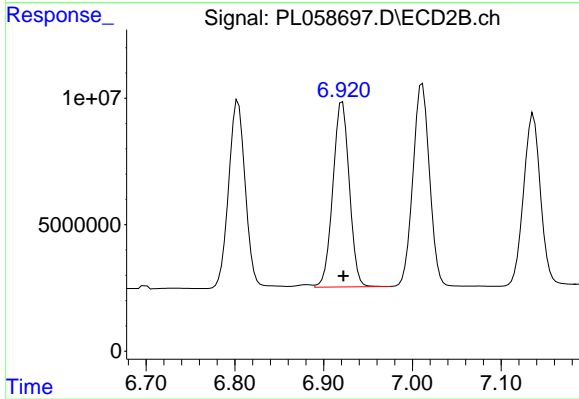
#15 Endosulfan II

R.T.: 7.011 min  
 Delta R.T.: -0.001 min  
 Response: 104452353  
 Conc: 52.30 ng/ml



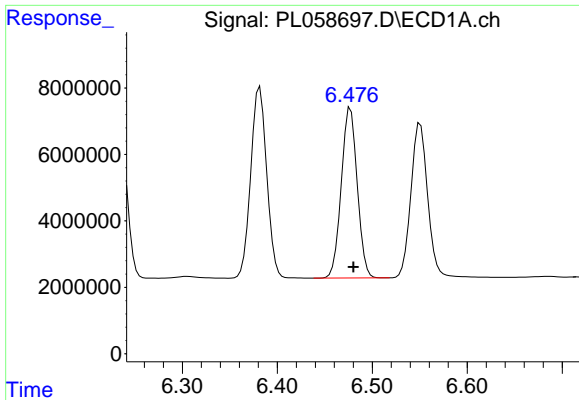
#16 4,4'-DDD

R.T.: 6.234 min  
 Delta R.T.: -0.003 min  
 Response: 58659173  
 Conc: 49.74 ng/ml



#16 4,4'-DDD

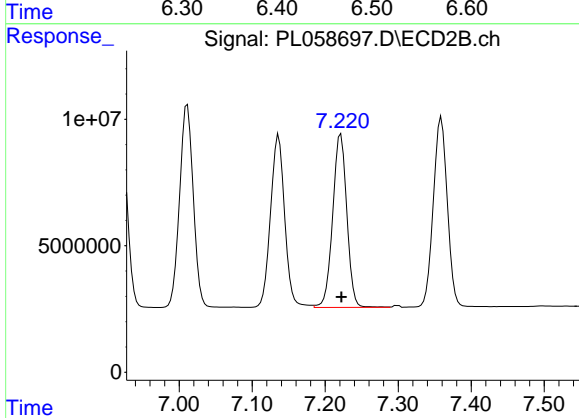
R.T.: 6.921 min  
 Delta R.T.: -0.001 min  
 Response: 94413921  
 Conc: 53.95 ng/ml



#17 4,4'-DDT

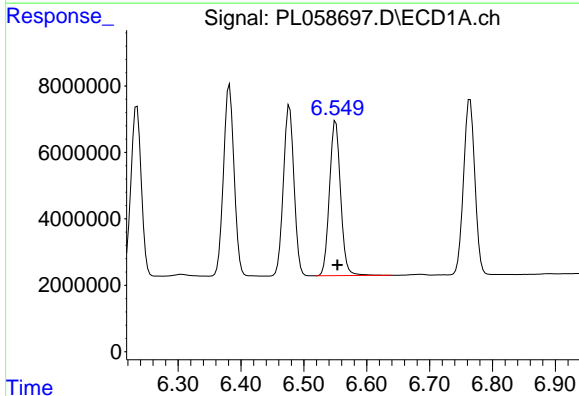
R.T.: 6.477 min  
Delta R.T.: -0.003 min  
Response: 59924729  
Conc: 49.11 ng/ml

Instrument :  
ECD\_L  
ClientSampleId :  
PSTDCCC050



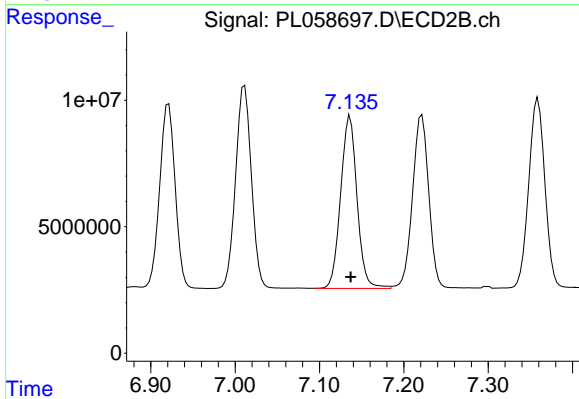
#17 4,4'-DDT

R.T.: 7.222 min  
Delta R.T.: 0.000 min  
Response: 92130350  
Conc: 54.43 ng/ml



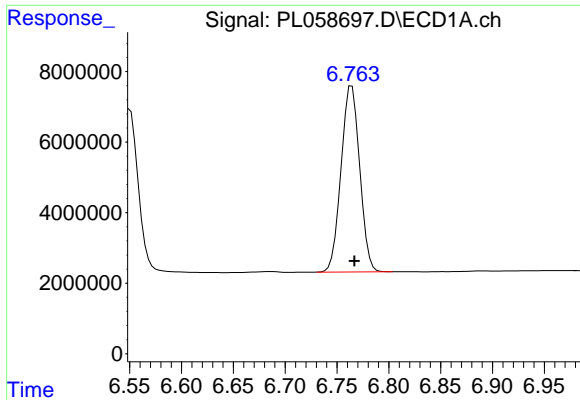
#18 Endrin aldehyde

R.T.: 6.551 min  
Delta R.T.: -0.003 min  
Response: 57304920  
Conc: 48.82 ng/ml



#18 Endrin aldehyde

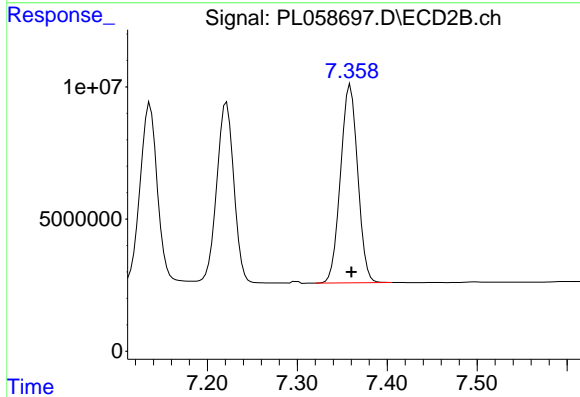
R.T.: 7.136 min  
Delta R.T.: 0.000 min  
Response: 92082571  
Conc: 53.95 ng/ml



#19 Endosulfan Sulfate

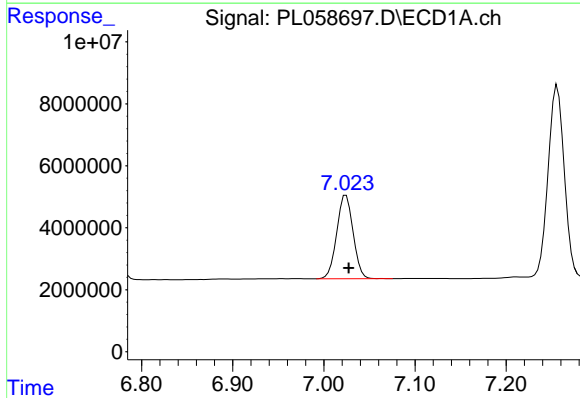
R.T.: 6.764 min  
 Delta R.T.: -0.003 min  
 Response: 66013917  
 Conc: 49.80 ng/ml

Instrument :  
 ECD\_L  
 ClientSampleId :  
 PSTDCCC050



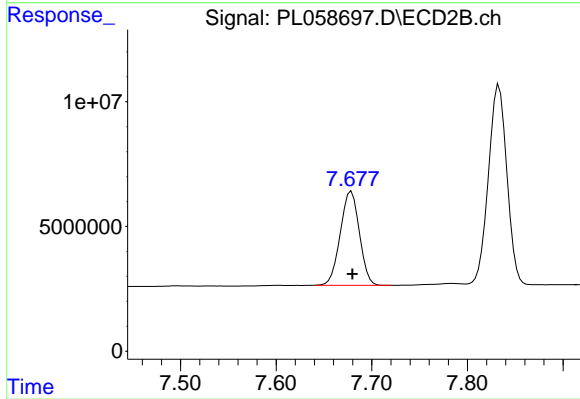
#19 Endosulfan Sulfate

R.T.: 7.359 min  
 Delta R.T.: 0.000 min  
 Response: 99586443  
 Conc: 53.21 ng/ml



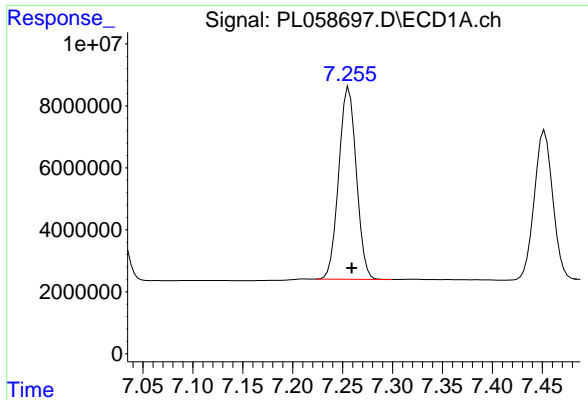
#20 Methoxychlor

R.T.: 7.024 min  
 Delta R.T.: -0.003 min  
 Response: 33654927  
 Conc: 51.84 ng/ml



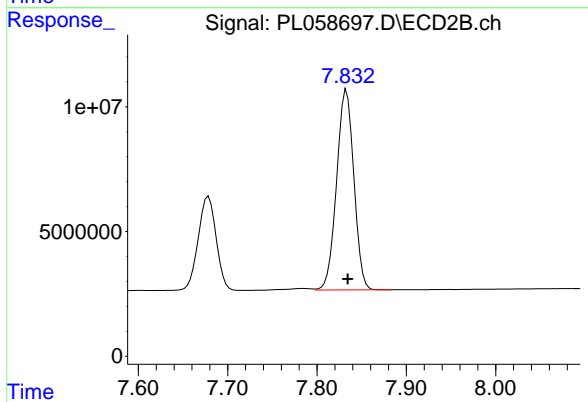
#20 Methoxychlor

R.T.: 7.679 min  
 Delta R.T.: 0.000 min  
 Response: 52456789  
 Conc: 53.41 ng/ml

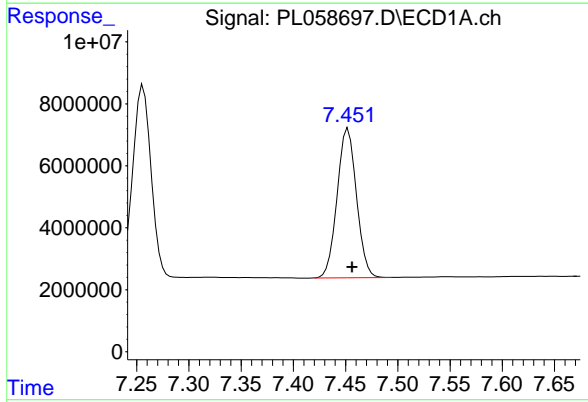


#21 Endrin ketone  
 R.T.: 7.256 min  
 Delta R.T.: -0.003 min  
 Response: 76033636  
 Conc: 51.27 ng/ml

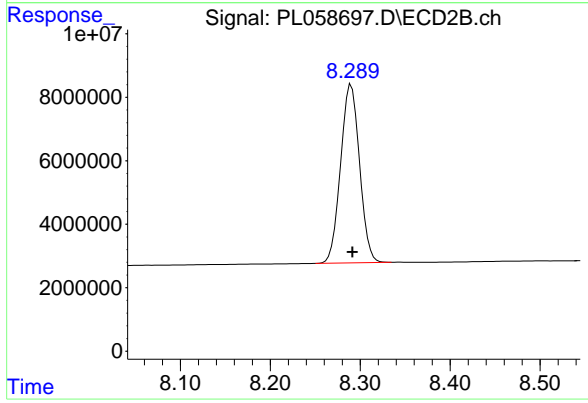
Instrument :  
 ECD\_L  
 ClientSampleId :  
 PSTDCCC050



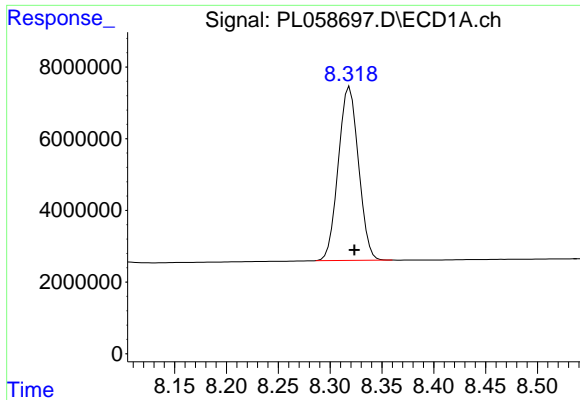
#21 Endrin ketone  
 R.T.: 7.833 min  
 Delta R.T.: -0.001 min  
 Response: 107774797  
 Conc: 53.50 ng/ml



#22 Mirex  
 R.T.: 7.452 min  
 Delta R.T.: -0.004 min  
 Response: 62168036  
 Conc: 50.85 ng/ml



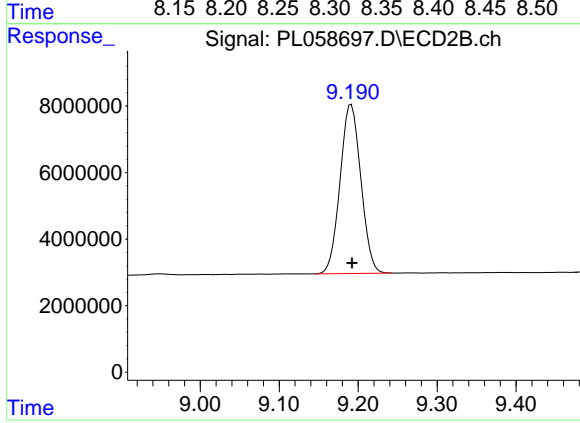
#22 Mirex  
 R.T.: 8.290 min  
 Delta R.T.: -0.001 min  
 Response: 82277499  
 Conc: 52.36 ng/ml



#28 Decachlorobiphenyl

R.T.: 8.319 min  
Delta R.T.: -0.005 min  
Response: 65794541  
Conc: 50.39 ng/ml

Instrument :  
ECD\_L  
ClientSampleId :  
PSTDCCC050



#28 Decachlorobiphenyl

R.T.: 9.191 min  
Delta R.T.: 0.000 min  
Response: 93035353  
Conc: 52.64 ng/ml