

Data Path : \\74.0.250.170\terastorage\pestpcbsrv\HPCHEM1\ECD_L\Data\PL051419\
 Data File : PL048501.D
 Signal(s) : Signal #1: ECD1A.ch Signal #2: ECD2B.ch
 Acq On : 14 May 2019 08:52
 Operator : AJ\SJ
 Sample : PSTDCCC050
 Misc :
 ALS Vial : 4 Sample Multiplier: 1

Instrument :
 ECD_L
 ClientSampleId :
 PSTDCCC050

Integration File signal 1: autoint1.e
 Integration File signal 2: autoint2.e
 Quant Time: May 15 00:55:45 2019
 Quant Method : Z:\pestpcbsrv\HPCHEM1\ECD_L\methods\PL050119.M
 Quant Title : GC Extractables
 QLast Update : Thu May 02 09:36:55 2019
 Response via : Initial Calibration
 Integrator: ChemStation

Volume Inj. : 1 µl
 Signal #1 Phase : ZB-MR2 Signal #2 Phase: ZB-MR1
 Signal #1 Info : 30M x 0.32mm x0.2 Signal #2 Info : 30M x 0.32mm x0.5µm

	Compound	RT#1	RT#2	Resp#1	Resp#2	ng/ml	ng/ml

System Monitoring Compounds							
1)	SA Tetrachlo...	3.328	3.940	537.4E6	135.6E6	55.476	54.430
28)	SA Decachlor...	7.998	8.979	519.5E6	131.4E6	51.670	49.493
Target Compounds							
2)	A alpha-BHC	3.756	4.329	890.1E6	194.3E6	57.546	55.320
3)	MA gamma-BHC...	4.032	4.612	813.9E6	178.2E6	57.283	54.565
4)	MA Heptachlor	4.317	5.116	826.2E6	184.7E6	56.161	53.359
5)	MB Aldrin	4.556	5.419	774.8E6	167.7E6	56.548	54.143
6)	B beta-BHC	4.286	4.787	330.3E6	82172046	55.973	52.809
7)	B delta-BHC	4.480	5.001	809.3E6	167.1E6	57.320	59.102
8)	B Heptachlor...	4.993	5.806	695.1E6	156.3E6	53.945	53.571
9)	A Endosulfan I	5.324	6.161	652.3E6	145.2E6	54.220	51.368
10)	B gamma-Chl...	5.216	6.040	724.6E6	160.7E6	54.269	52.206
11)	B alpha-Chl...	5.272	6.112	705.0E6	158.8E6	53.928	51.756
12)	B 4,4'-DDE	5.439	6.271	686.8E6	145.8E6	54.141	52.819
13)	MA Dieldrin	5.563	6.418	703.9E6	152.8E6	54.059	52.080
14)	MA Endrin	5.816	6.634	621.9E6	128.9E6	51.088	49.441
15)	B Endosulfa...	6.091	6.846	601.9E6	134.1E6	52.154	49.731
16)	A 4,4'-DDD	5.951	6.761	542.5E6	119.5E6	55.734	53.260
17)	MA 4,4'-DDT	6.185	7.059	506.1E6	113.7E6	50.376	48.447
18)	B Endrin al...	6.258	6.970	494.9E6	115.6E6	50.923	49.311
19)	B Endosulfa...	6.469	7.193	548.2E6	128.1E6	51.077	49.479
20)	A Methoxychlor	6.731	7.519	254.8E6	64659835	46.803	47.364
21)	B Endrin ke...	6.951	7.661	605.3E6	133.1E6	51.934	50.958
22)	Mirex	7.125	8.112	424.2E6	103.5E6	47.327	49.098
24)	Chlordane-2	0.000	5.419f	0	167.7E6	N.D.	1296.283 #
25)	Chlordane-3	5.216	6.040	724.6E6	160.7E6	460.200	366.752
26)	Chlordane-4	5.272	6.112	705.0E6	158.8E6	485.620	302.711 #
27)	Chlordane-5	6.091	0.000	601.9E6	0	1281.818	N.D. #

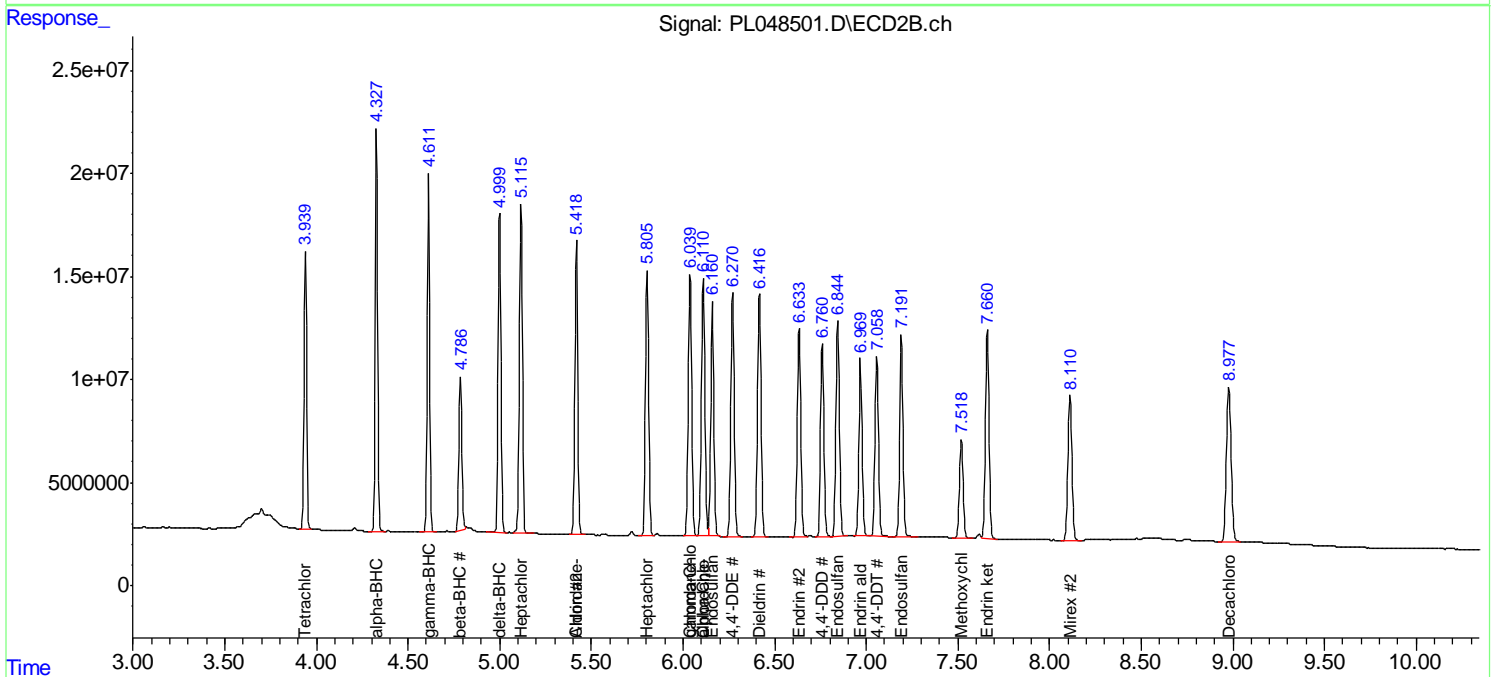
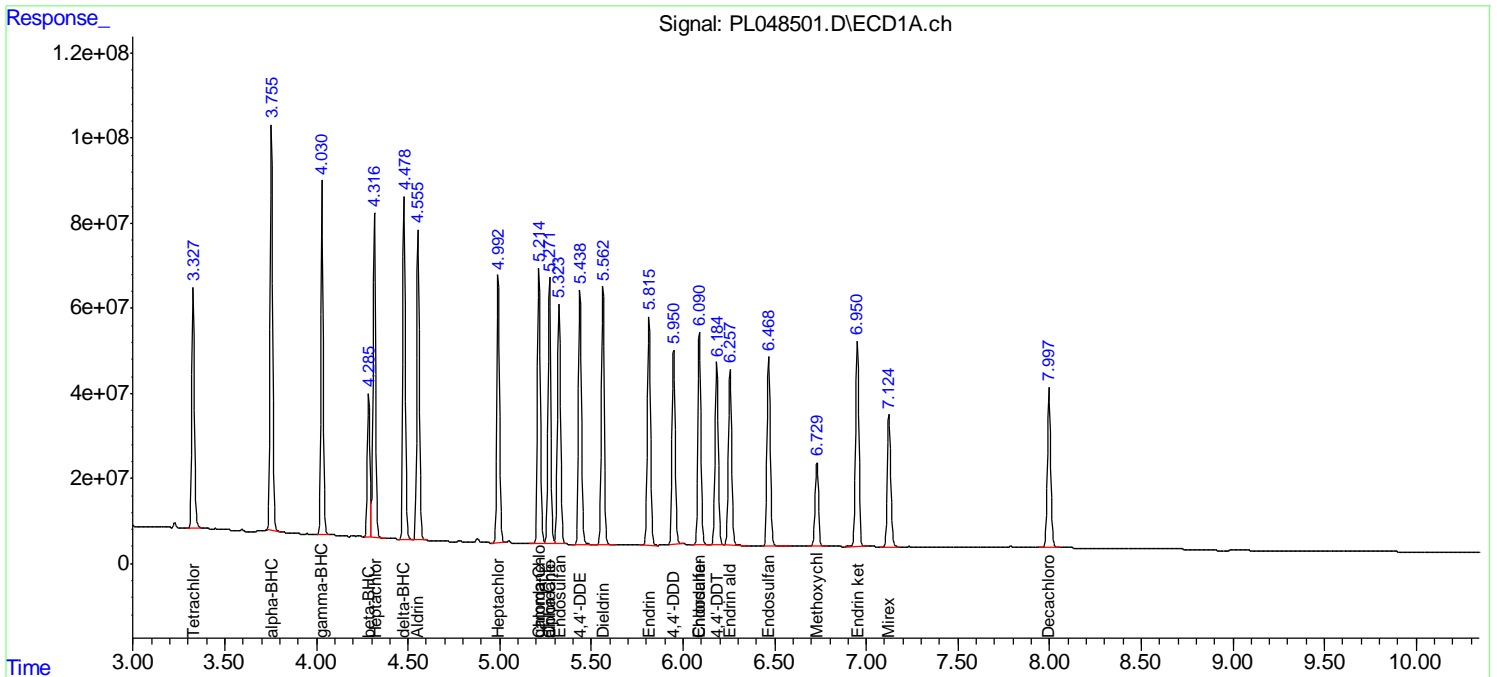
(f)=RT Delta > 1/2 Window (#)=Amounts differ by > 25% (m)=manual int.

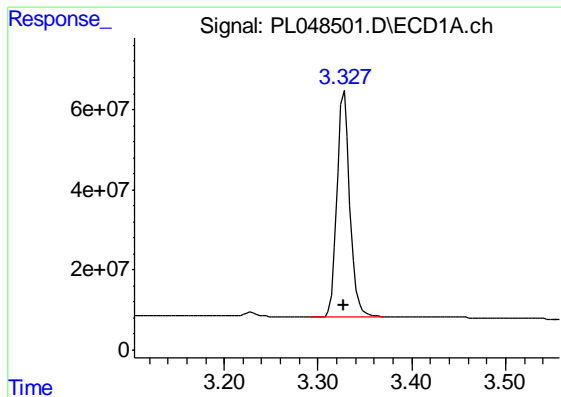
Data Path : \\74.0.250.170\terastorage\pestpcbsrv\HPCHEM1\ECD_L\Data\PL051419\
 Data File : PL048501.D
 Signal(s) : Signal #1: ECD1A.ch Signal #2: ECD2B.ch
 Acq On : 14 May 2019 08:52
 Operator : AJ\SJ
 Sample : PSTDCCC050
 Misc :
 ALS Vial : 4 Sample Multiplier: 1

Instrument :
 ECD_L
 Client Sampled :
 PSTDCCC050

Integration File signal 1: autoint1.e
 Integration File signal 2: autoint2.e
 Quant Time: May 15 00:55:45 2019
 Quant Method : Z:\pestpcbsrv\HPCHEM1\ECD_L\methods\PL050119.M
 Quant Title : GC Extractables
 QLast Update : Thu May 02 09:36:55 2019
 Response via : Initial Calibration
 Integrator: ChemStation

Volume Inj. : 1 µl
 Signal #1 Phase : ZB-MR2 Signal #2 Phase: ZB-MR1
 Signal #1 Info : 30M x 0.32mm x0.2 Signal #2 Info : 30M x 0.32mm x0.5µm

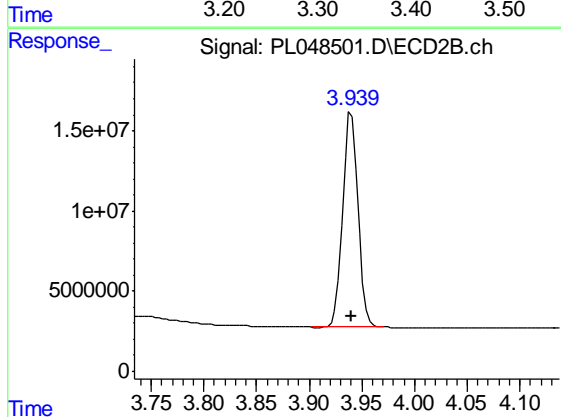




#1 Tetrachloro-m-xylene

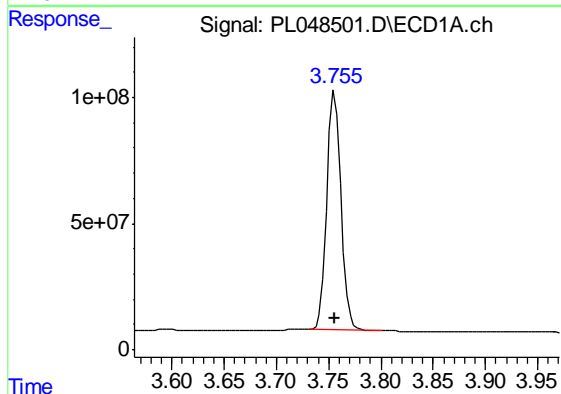
R.T.: 3.328 min
 Delta R.T.: 0.000 min
 Response: 537390005
 Conc: 55.48 ng/ml

Instrument :
 ECD_L
 ClientSampleId :
 PSTDCCC050



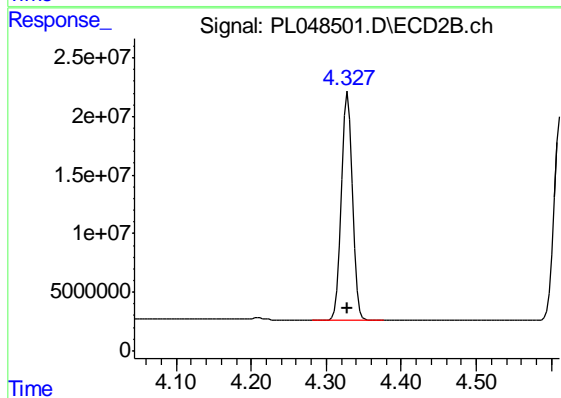
#1 Tetrachloro-m-xylene

R.T.: 3.940 min
 Delta R.T.: 0.000 min
 Response: 135579162
 Conc: 54.43 ng/ml



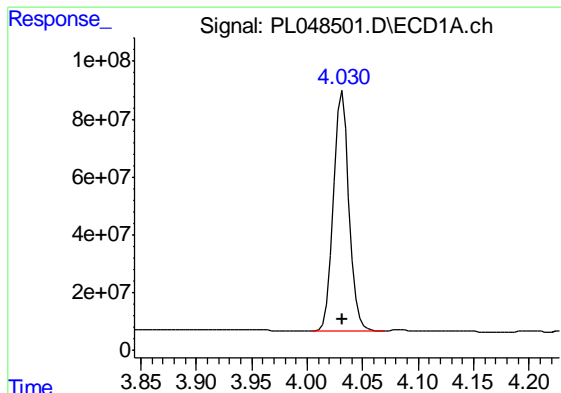
#2 alpha-BHC

R.T.: 3.756 min
 Delta R.T.: 0.000 min
 Response: 890098380
 Conc: 57.55 ng/ml



#2 alpha-BHC

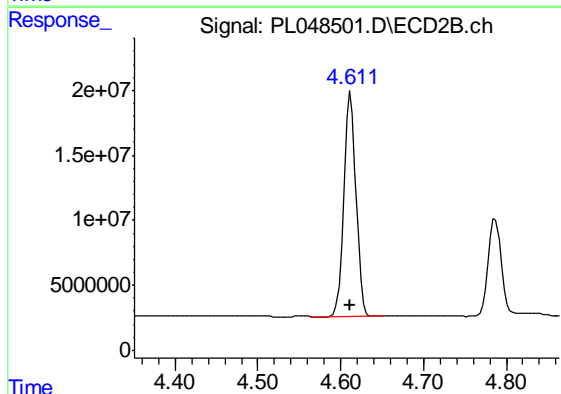
R.T.: 4.329 min
 Delta R.T.: 0.000 min
 Response: 194283632
 Conc: 55.32 ng/ml



#3 gamma-BHC (Lindane)

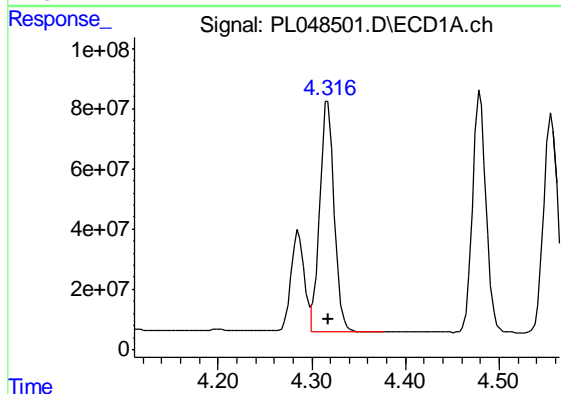
R.T.: 4.032 min
 Delta R.T.: 0.000 min
 Response: 813941912
 Conc: 57.28 ng/ml

Instrument :
 ECD_L
 ClientSampleId :
 PSTDCCC050



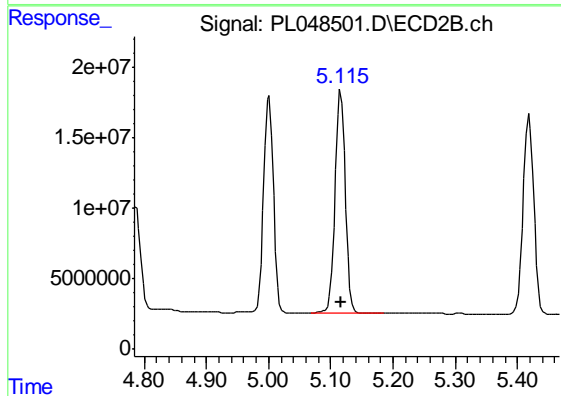
#3 gamma-BHC (Lindane)

R.T.: 4.612 min
 Delta R.T.: 0.000 min
 Response: 178216618
 Conc: 54.56 ng/ml



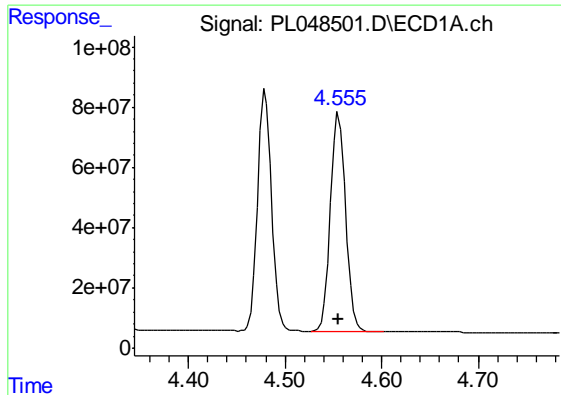
#4 Heptachlor

R.T.: 4.317 min
 Delta R.T.: 0.000 min
 Response: 826247967
 Conc: 56.16 ng/ml



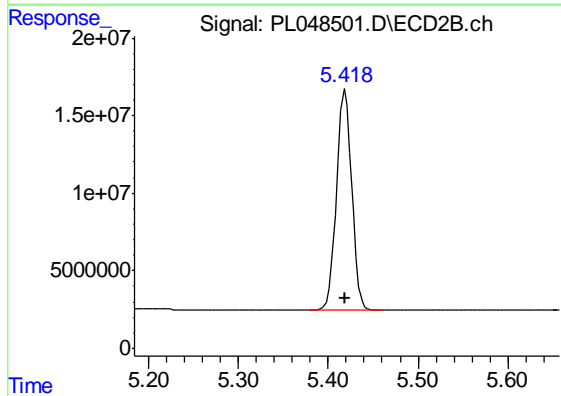
#4 Heptachlor

R.T.: 5.116 min
 Delta R.T.: 0.000 min
 Response: 184721066
 Conc: 53.36 ng/ml

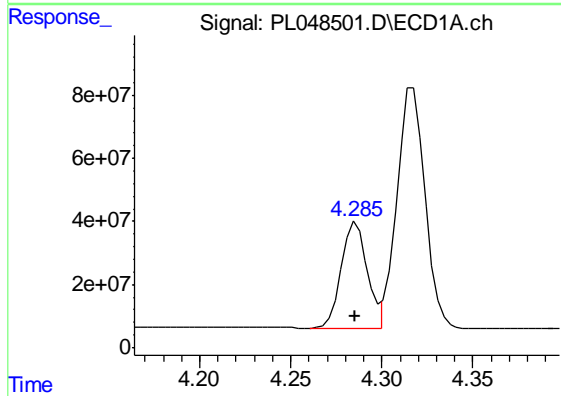


#5 Aldrin
 R.T.: 4.556 min
 Delta R.T.: 0.000 min
 Response: 774794614
 Conc: 56.55 ng/ml

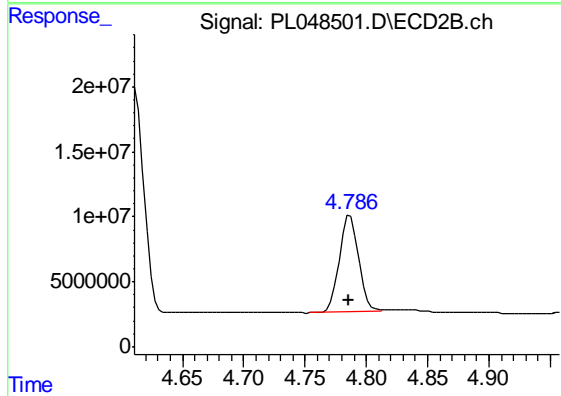
Instrument :
 ECD_L
 ClientSampleId :
 PSTDCCC050



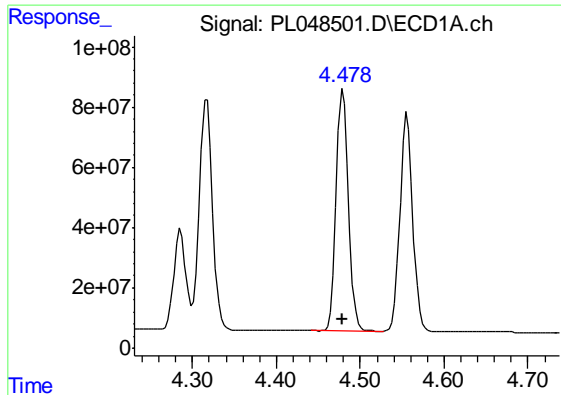
#5 Aldrin
 R.T.: 5.419 min
 Delta R.T.: 0.000 min
 Response: 167659622
 Conc: 54.14 ng/ml



#6 beta-BHC
 R.T.: 4.286 min
 Delta R.T.: 0.000 min
 Response: 330328258
 Conc: 55.97 ng/ml

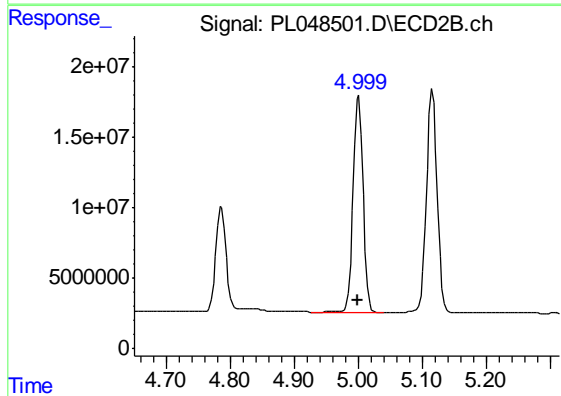


#6 beta-BHC
 R.T.: 4.787 min
 Delta R.T.: 0.000 min
 Response: 82172046
 Conc: 52.81 ng/ml

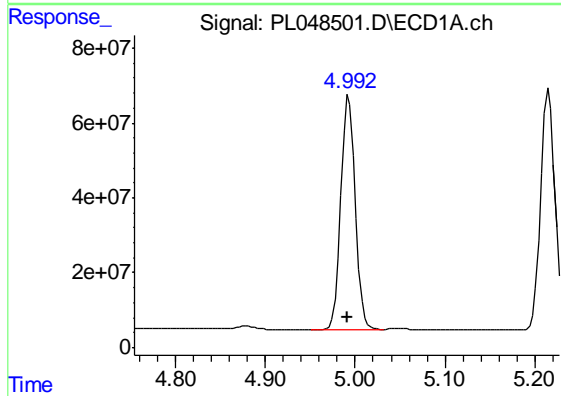


#7 delta-BHC
 R.T.: 4.480 min
 Delta R.T.: 0.000 min
 Response: 809287148
 Conc: 57.32 ng/ml

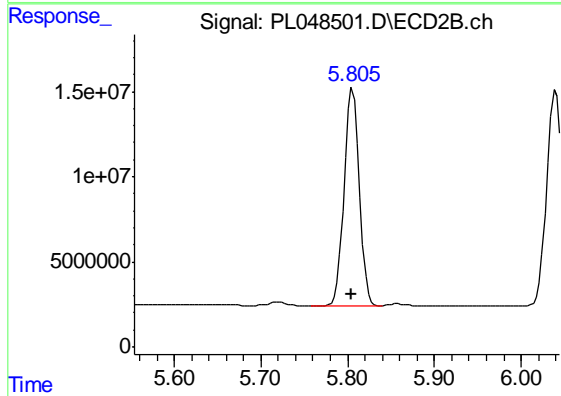
Instrument :
 ECD_L
 ClientSampleId :
 PSTDCCC050



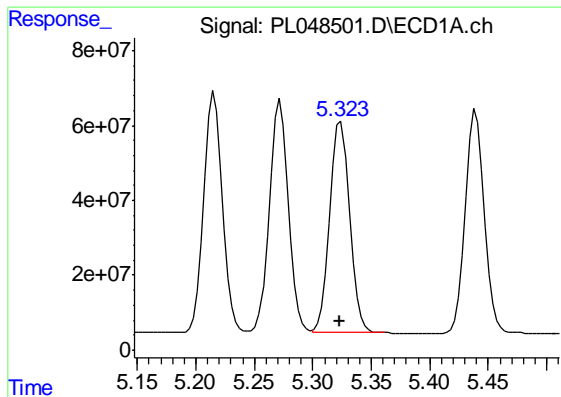
#7 delta-BHC
 R.T.: 5.001 min
 Delta R.T.: 0.000 min
 Response: 167132537
 Conc: 59.10 ng/ml



#8 Heptachlor epoxide
 R.T.: 4.993 min
 Delta R.T.: 0.001 min
 Response: 695061332
 Conc: 53.94 ng/ml



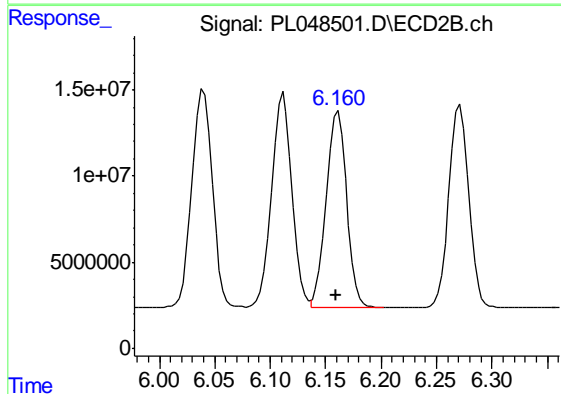
#8 Heptachlor epoxide
 R.T.: 5.806 min
 Delta R.T.: 0.002 min
 Response: 156251306
 Conc: 53.57 ng/ml



#9 Endosulfan I

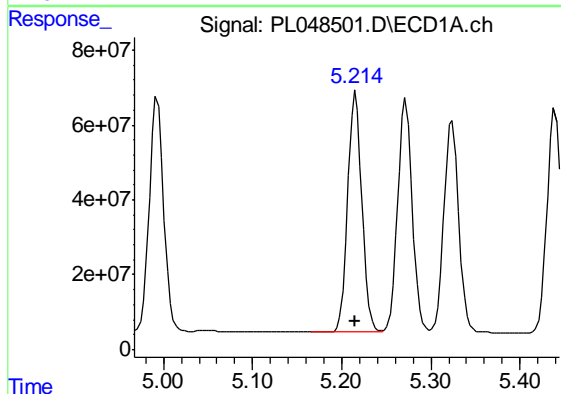
R.T.: 5.324 min
 Delta R.T.: 0.001 min
 Response: 652265481
 Conc: 54.22 ng/ml

Instrument :
 ECD_L
 ClientSampleId :
 PSTDCCC050



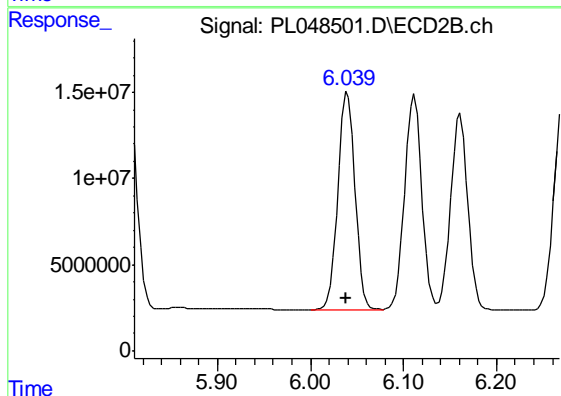
#9 Endosulfan I

R.T.: 6.161 min
 Delta R.T.: 0.002 min
 Response: 145242349
 Conc: 51.37 ng/ml



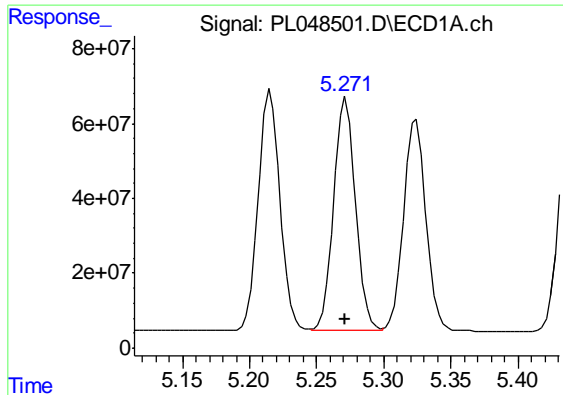
#10 gamma-Chlordane

R.T.: 5.216 min
 Delta R.T.: 0.000 min
 Response: 724611054
 Conc: 54.27 ng/ml



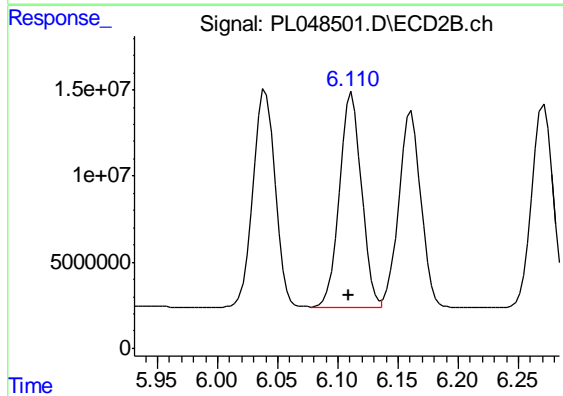
#10 gamma-Chlordane

R.T.: 6.040 min
 Delta R.T.: 0.002 min
 Response: 160722020
 Conc: 52.21 ng/ml

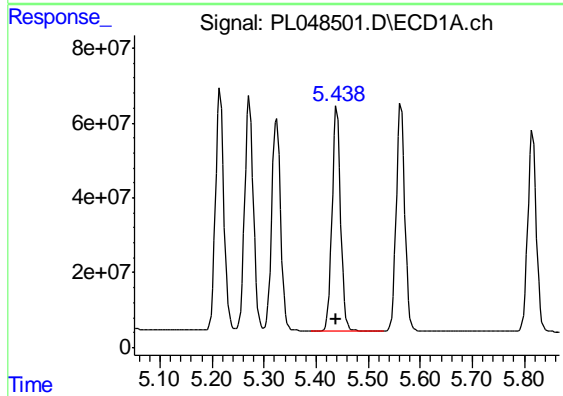


#11 alpha-Chlordane
 R.T.: 5.272 min
 Delta R.T.: 0.001 min
 Response: 705033746
 Conc: 53.93 ng/ml

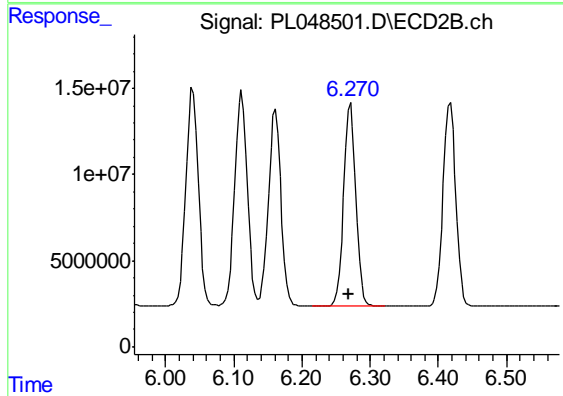
Instrument :
 ECD_L
 ClientSampleId :
 PSTDCCC050



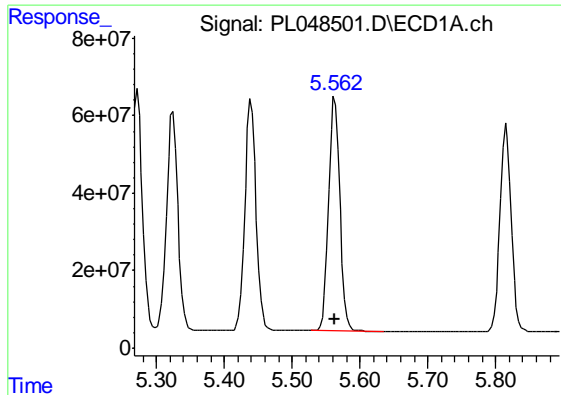
#11 alpha-Chlordane
 R.T.: 6.112 min
 Delta R.T.: 0.002 min
 Response: 158802176
 Conc: 51.76 ng/ml



#12 4,4'-DDE
 R.T.: 5.439 min
 Delta R.T.: 0.000 min
 Response: 686795421
 Conc: 54.14 ng/ml



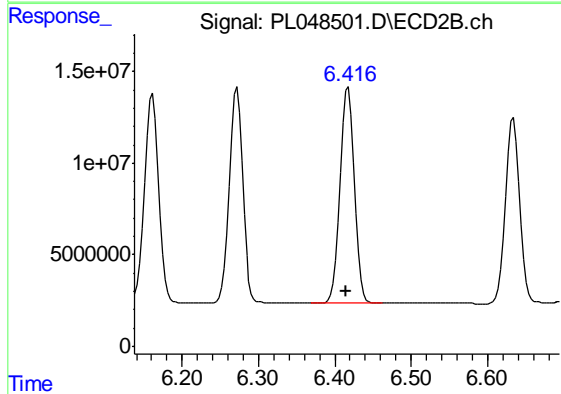
#12 4,4'-DDE
 R.T.: 6.271 min
 Delta R.T.: 0.002 min
 Response: 145827940
 Conc: 52.82 ng/ml



#13 Dieldrin

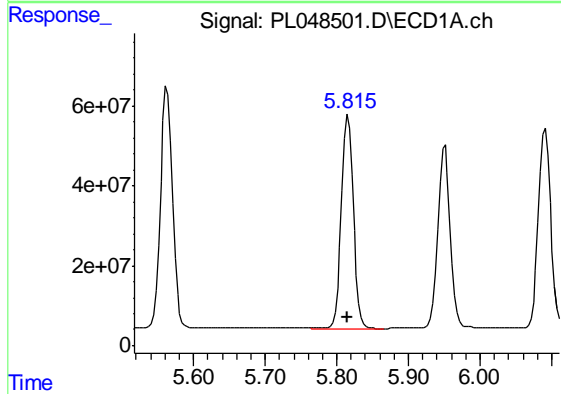
R.T.: 5.563 min
 Delta R.T.: 0.001 min
 Response: 703894260
 Conc: 54.06 ng/ml

Instrument :
 ECD_L
 ClientSampled :
 PSTDCCC050



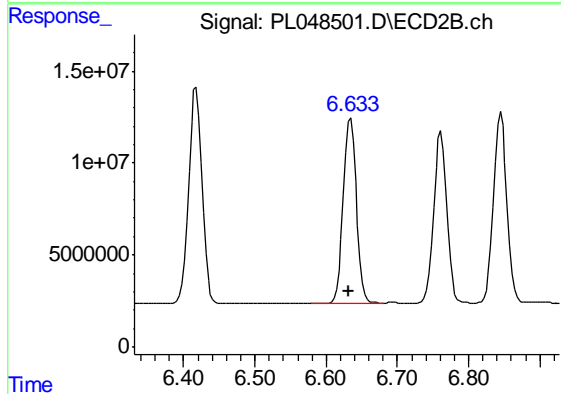
#13 Dieldrin

R.T.: 6.418 min
 Delta R.T.: 0.002 min
 Response: 152785755
 Conc: 52.08 ng/ml



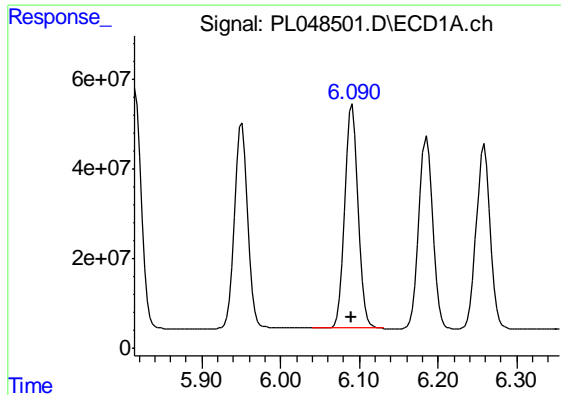
#14 Endrin

R.T.: 5.816 min
 Delta R.T.: 0.002 min
 Response: 621943193
 Conc: 51.09 ng/ml



#14 Endrin

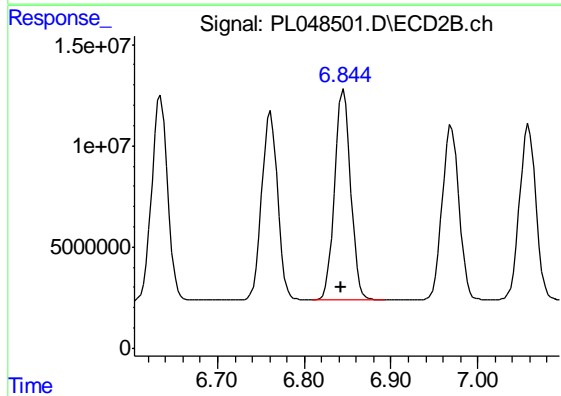
R.T.: 6.634 min
 Delta R.T.: 0.002 min
 Response: 128912862
 Conc: 49.44 ng/ml



#15 Endosulfan II

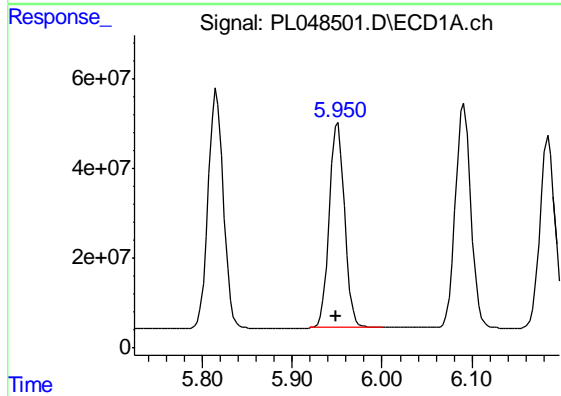
R.T.: 6.091 min
Delta R.T.: 0.002 min
Response: 601885661
Conc: 52.15 ng/ml

Instrument :
ECD_L
ClientSampleId :
PSTDCCC050



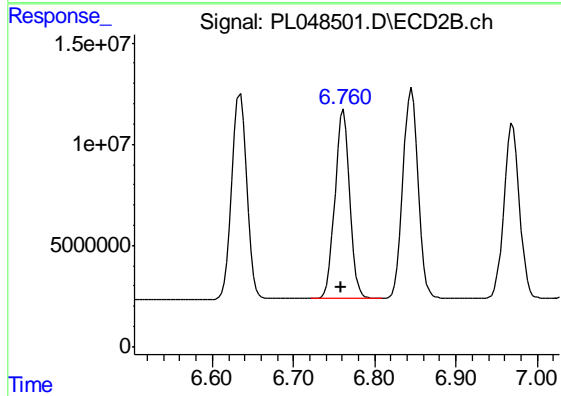
#15 Endosulfan II

R.T.: 6.846 min
Delta R.T.: 0.003 min
Response: 134105760
Conc: 49.73 ng/ml



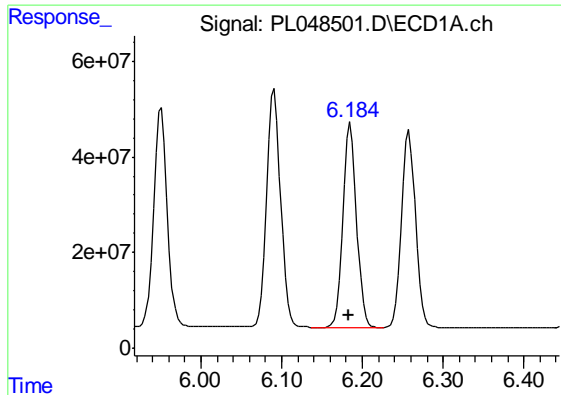
#16 4,4'-DDD

R.T.: 5.951 min
Delta R.T.: 0.002 min
Response: 542519685
Conc: 55.73 ng/ml



#16 4,4'-DDD

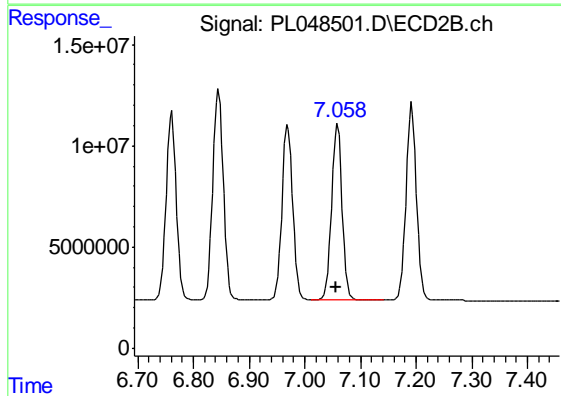
R.T.: 6.761 min
Delta R.T.: 0.002 min
Response: 119517618
Conc: 53.26 ng/ml



#17 4,4'-DDT

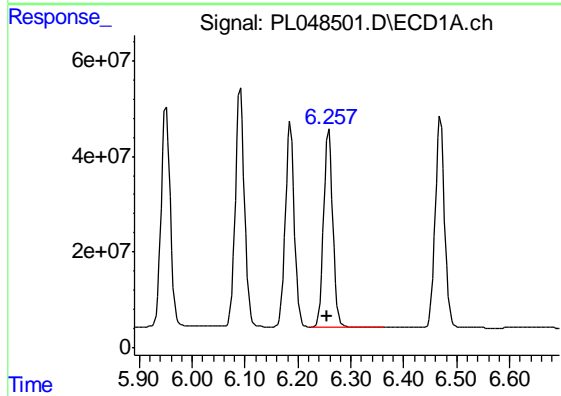
R.T.: 6.185 min
Delta R.T.: 0.002 min
Response: 506100882
Conc: 50.38 ng/ml

Instrument :
ECD_L
ClientSampled :
PSTDCCC050



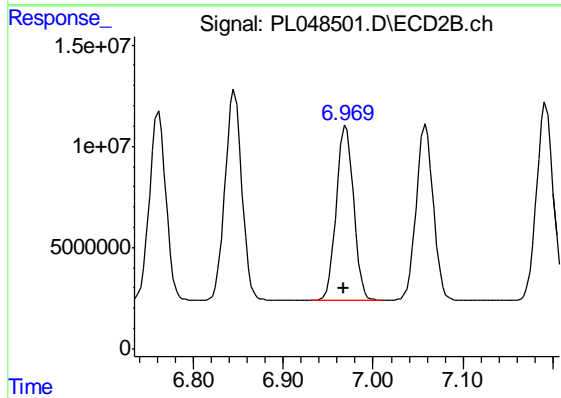
#17 4,4'-DDT

R.T.: 7.059 min
Delta R.T.: 0.002 min
Response: 113686399
Conc: 48.45 ng/ml



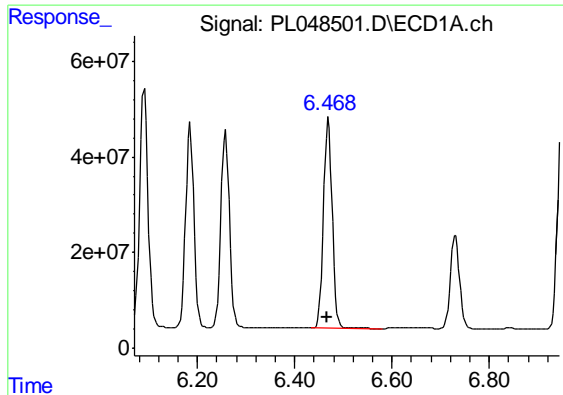
#18 Endrin aldehyde

R.T.: 6.258 min
Delta R.T.: 0.002 min
Response: 494888279
Conc: 50.92 ng/ml



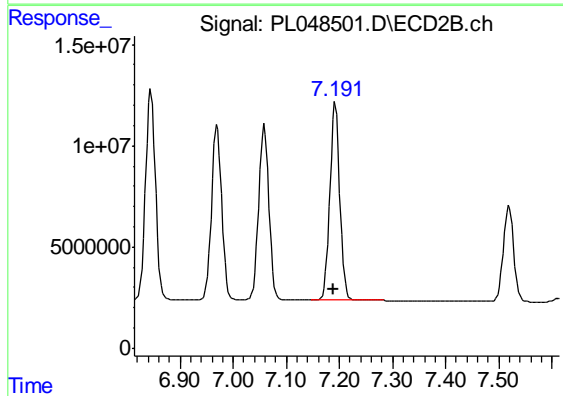
#18 Endrin aldehyde

R.T.: 6.970 min
Delta R.T.: 0.003 min
Response: 115559348
Conc: 49.31 ng/ml

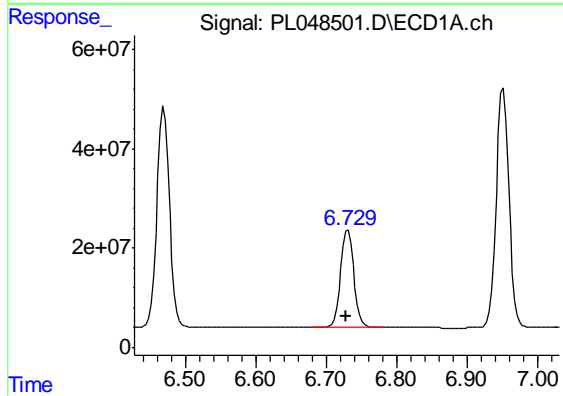


#19 Endosulfan Sulfate
 R.T.: 6.469 min
 Delta R.T.: 0.002 min
 Response: 548185931
 Conc: 51.08 ng/ml

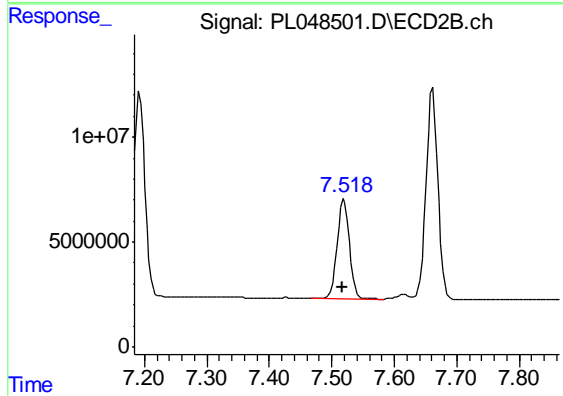
Instrument :
 ECD_L
 ClientSampleId :
 PSTDCCC050



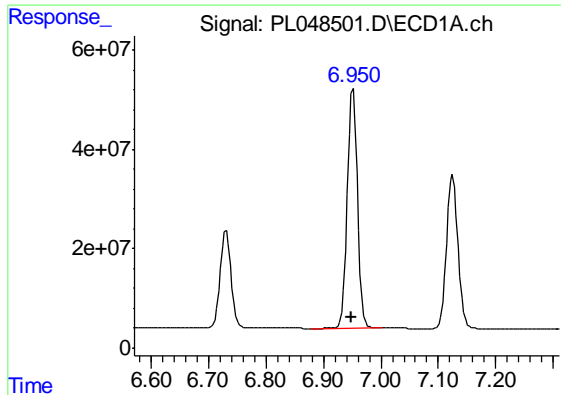
#19 Endosulfan Sulfate
 R.T.: 7.193 min
 Delta R.T.: 0.003 min
 Response: 128061441
 Conc: 49.48 ng/ml



#20 Methoxychlor
 R.T.: 6.731 min
 Delta R.T.: 0.002 min
 Response: 254831596
 Conc: 46.80 ng/ml



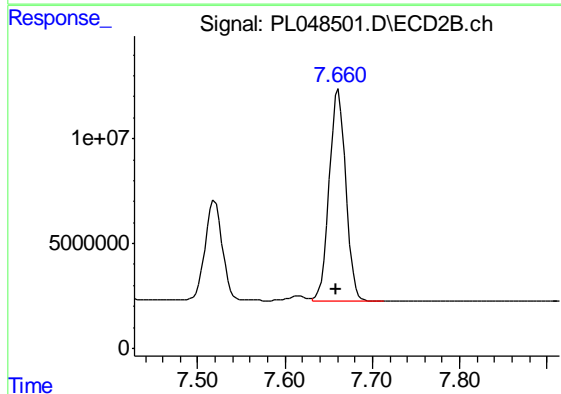
#20 Methoxychlor
 R.T.: 7.519 min
 Delta R.T.: 0.003 min
 Response: 64659835
 Conc: 47.36 ng/ml



#21 Endrin ketone

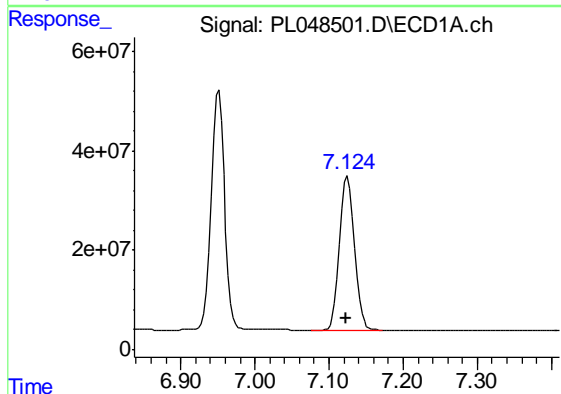
R.T.: 6.951 min
 Delta R.T.: 0.001 min
 Response: 605288852
 Conc: 51.93 ng/ml

Instrument :
 ECD_L
 ClientSampleId :
 PSTDCCC050



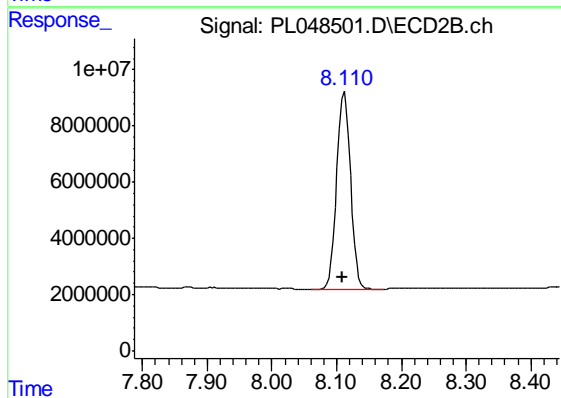
#21 Endrin ketone

R.T.: 7.661 min
 Delta R.T.: 0.003 min
 Response: 133142760
 Conc: 50.96 ng/ml



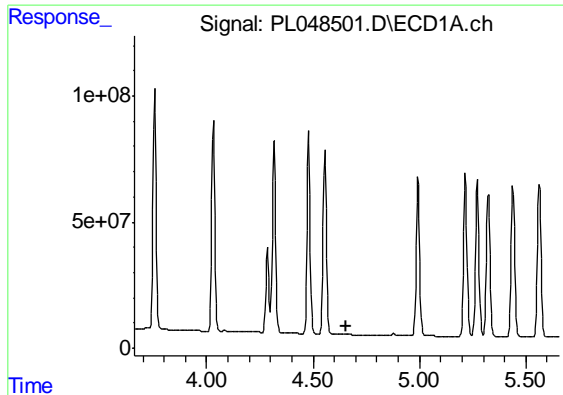
#22 Mirex

R.T.: 7.125 min
 Delta R.T.: 0.000 min
 Response: 424232250
 Conc: 47.33 ng/ml



#22 Mirex

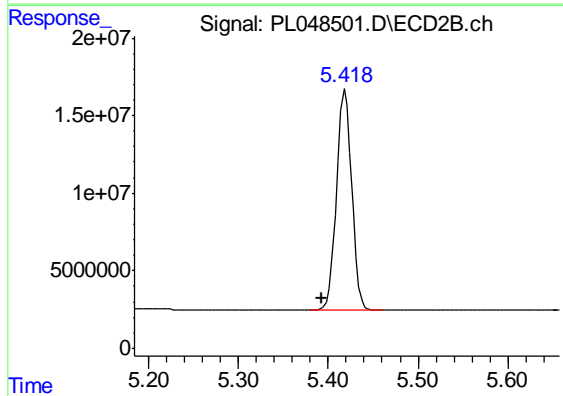
R.T.: 8.112 min
 Delta R.T.: 0.003 min
 Response: 103542533
 Conc: 49.10 ng/ml



#24 Chlordane-2

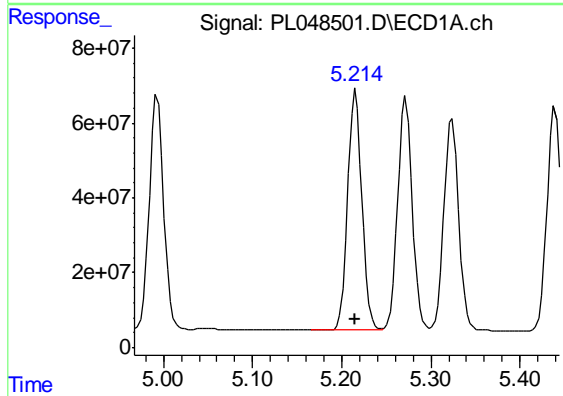
R.T.: 0.000 min
 Exp R.T. : 4.658 min
 Response: 0
 Conc: N.D.

Instrument :
 ECD_L
 ClientSampleId :
 PSTDCCC050



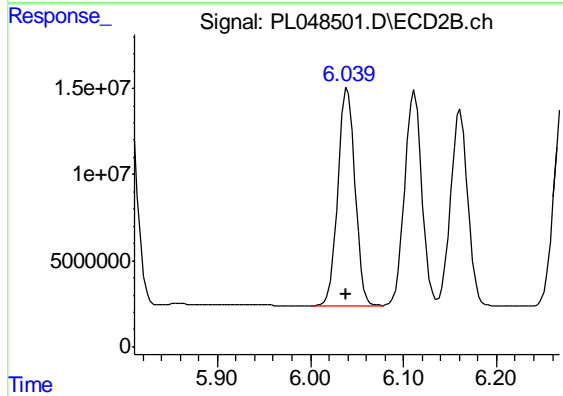
#24 Chlordane-2

R.T.: 5.419 min
 Delta R.T.: 0.026 min
 Response: 167659622
 Conc: 1296.28 ng/ml



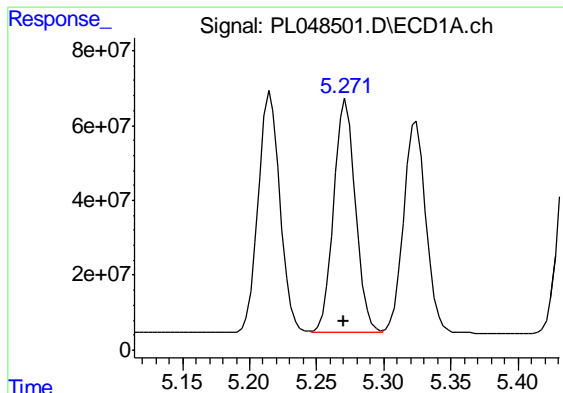
#25 Chlordane-3

R.T.: 5.216 min
 Delta R.T.: 0.000 min
 Response: 724611054
 Conc: 460.20 ng/ml



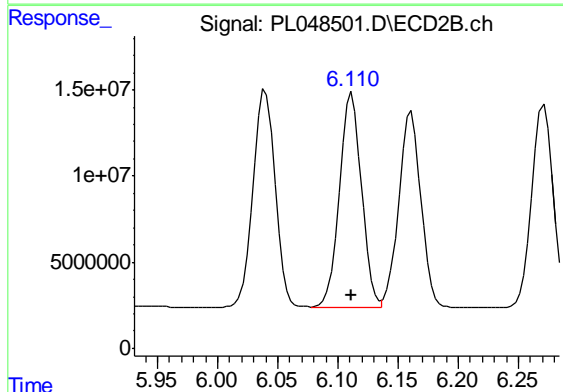
#25 Chlordane-3

R.T.: 6.040 min
 Delta R.T.: 0.002 min
 Response: 160722020
 Conc: 366.75 ng/ml

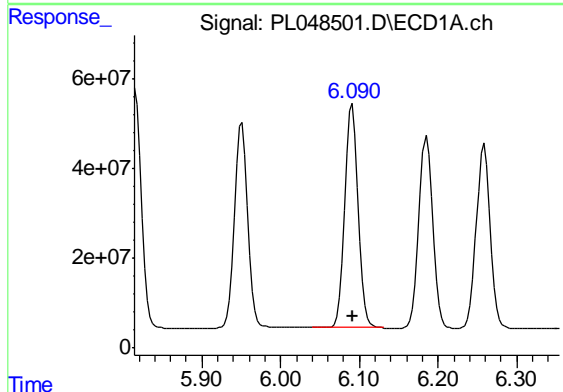


#26 Chlordane-4
 R.T.: 5.272 min
 Delta R.T.: 0.002 min
 Response: 705033746
 Conc: 485.62 ng/ml

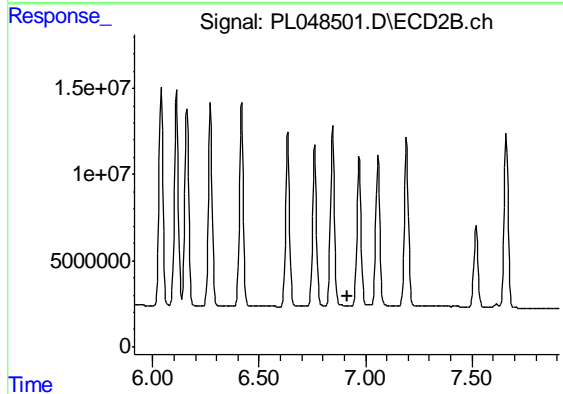
Instrument :
 ECD_L
 ClientSampleId :
 PSTDCCC050



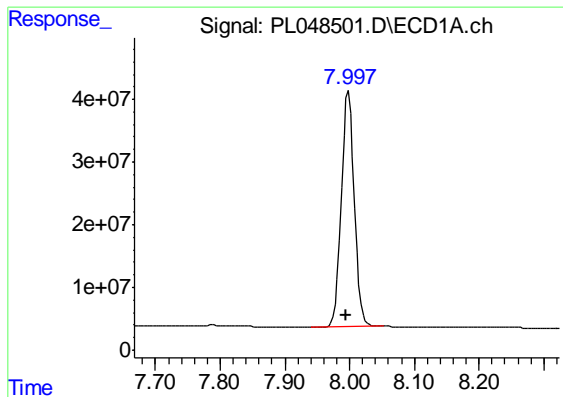
#26 Chlordane-4
 R.T.: 6.112 min
 Delta R.T.: 0.000 min
 Response: 158802176
 Conc: 302.71 ng/ml



#27 Chlordane-5
 R.T.: 6.091 min
 Delta R.T.: 0.000 min
 Response: 601885661
 Conc: 1281.82 ng/ml



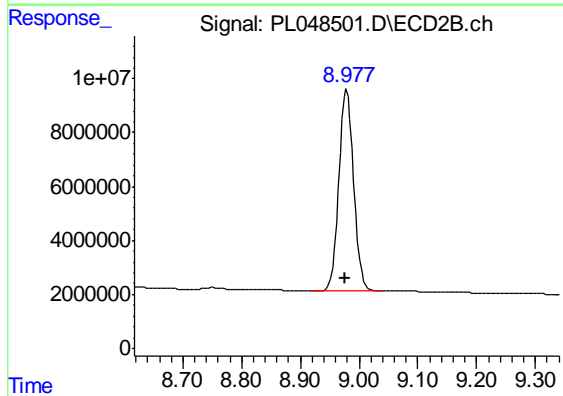
#27 Chlordane-5
 R.T.: 0.000 min
 Exp R.T. : 6.913 min
 Response: 0
 Conc: N.D.



#28 Decachlorobiphenyl

R.T.: 7.998 min
Delta R.T.: 0.002 min
Response: 519496243
Conc: 51.67 ng/ml

Instrument :
ECD_L
ClientSampleId :
PSTDCCC050



#28 Decachlorobiphenyl

R.T.: 8.979 min
Delta R.T.: 0.004 min
Response: 131369625
Conc: 49.49 ng/ml