

Data Path : \\74.0.250.170\terastorage\pestpcbsrv\HPCHEM1\ECD_L\Data\PL051419\
 Data File : PL048503.D
 Signal(s) : Signal #1: ECD1A.ch Signal #2: ECD2B.ch
 Acq On : 14 May 2019 10:07
 Operator : AJ\SJ
 Sample : K2779-05DL 10X
 Misc :
 ALS Vial : 6 Sample Multiplier: 1

Instrument :
 ECD_L
 ClientSampleId :
 RBR-200052DL

Integration File signal 1: autoint1.e
 Integration File signal 2: autoint2.e
 Quant Time: May 15 00:56:30 2019
 Quant Method : Z:\pestpcbsrv\HPCHEM1\ECD_L\methods\PL050119.M
 Quant Title : GC Extractables
 QLast Update : Thu May 02 09:36:55 2019
 Response via : Initial Calibration
 Integrator: ChemStation

Volume Inj. : 1 µl
 Signal #1 Phase : ZB-MR2 Signal #2 Phase: ZB-MR1
 Signal #1 Info : 30M x 0.32mm x0.2 Signal #2 Info : 30M x 0.32mm x0.5µm

Compound	RT#1	RT#2	Resp#1	Resp#2	ng/ml	ng/ml

System Monitoring Compounds						
1) SA Tetrachlo...	3.332	3.940	17069857	4483805	1.762	1.800
28) SA Decachlor...	8.004	8.982	15723522	3591369	1.564	1.353
Target Compounds						
2) A alpha-BHC	0.000	4.335	0	2309270	N.D.	0.658 #
4) MA Heptachlor	4.322	5.117	148.3E6	47135361	10.077	13.616 #
5) MB Aldrin	4.538f	5.397f	3916015	33772942	0.286	10.906 #
7) B delta-BHC	4.478	0.000	9663119	0	0.684	N.D. #
8) B Heptachlo...	4.999	5.795	15506213	44389598	1.203	15.219 #
9) A Endosulfan I	5.315	0.000	32701258	0	2.718	N.D. #
10) B gamma-Chl...	5.221	6.041	1054.8E6	147.9E6	79.000	48.026 #
11) B alpha-Chl...	5.277	6.114	702.4E6	203.7E6	53.728	66.382
13) MA Dieldrin	5.585f	0.000	7241498	0	0.556	N.D. #
14) MA Endrin	5.830f	0.000	13238177	0	1.087	N.D. #
15) B Endosulfa...	6.099	0.000	136.3E6	0	11.814	N.D. #
16) A 4,4'-DDD	5.941	6.776f	2202585	4724381	0.226	2.105 #
19) B Endosulfa...	0.000	7.190	0	2867204	N.D.	1.108 #
23) Chlordane-1	4.174	4.929	207.3E6	48543208	461.811	397.416
24) Chlordane-2	4.665	5.397	214.8E6	33772942	415.158	261.120 #
25) Chlordane-3	5.221	6.041	1054.8E6	147.9E6	669.927	337.393 #
26) Chlordane-4	5.277	6.114	702.4E6	203.7E6	483.821	388.252
27) Chlordane-5	6.099	6.917	136.3E6	24512574	290.365	241.097

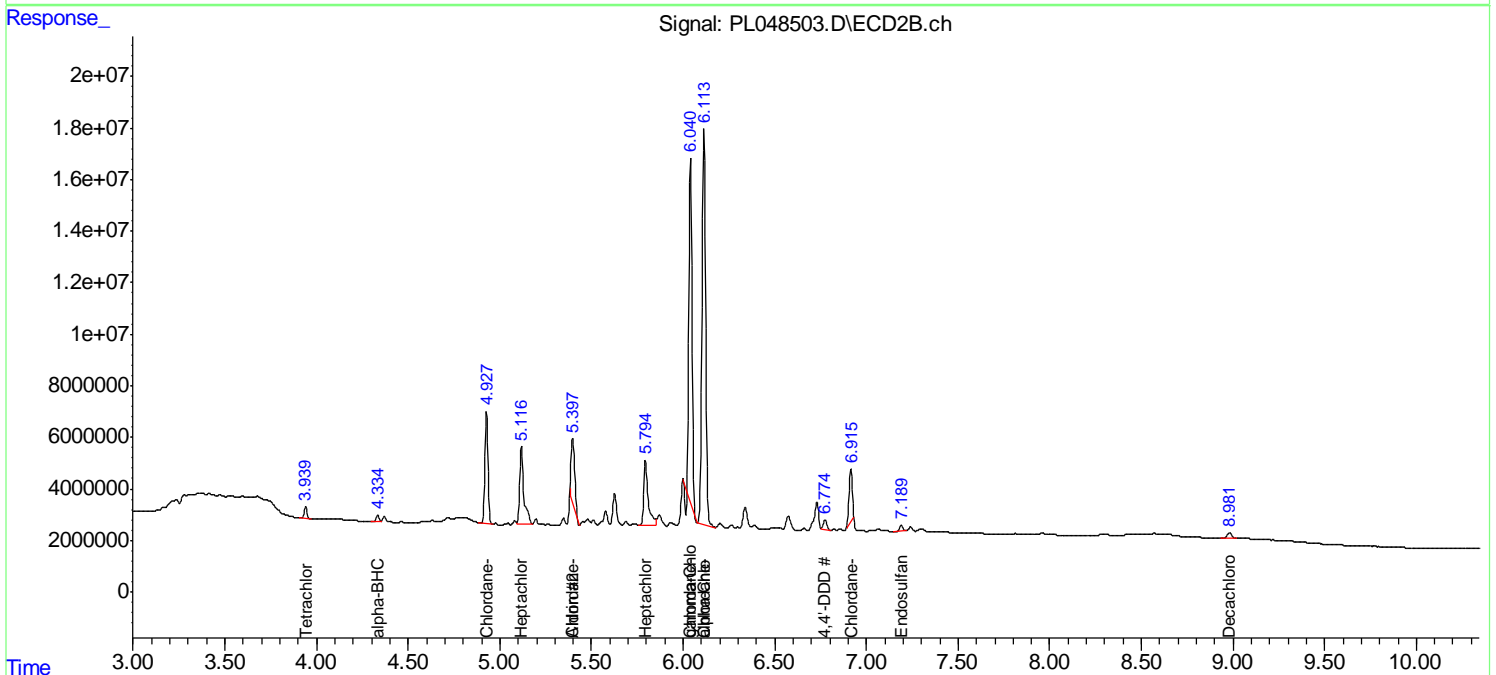
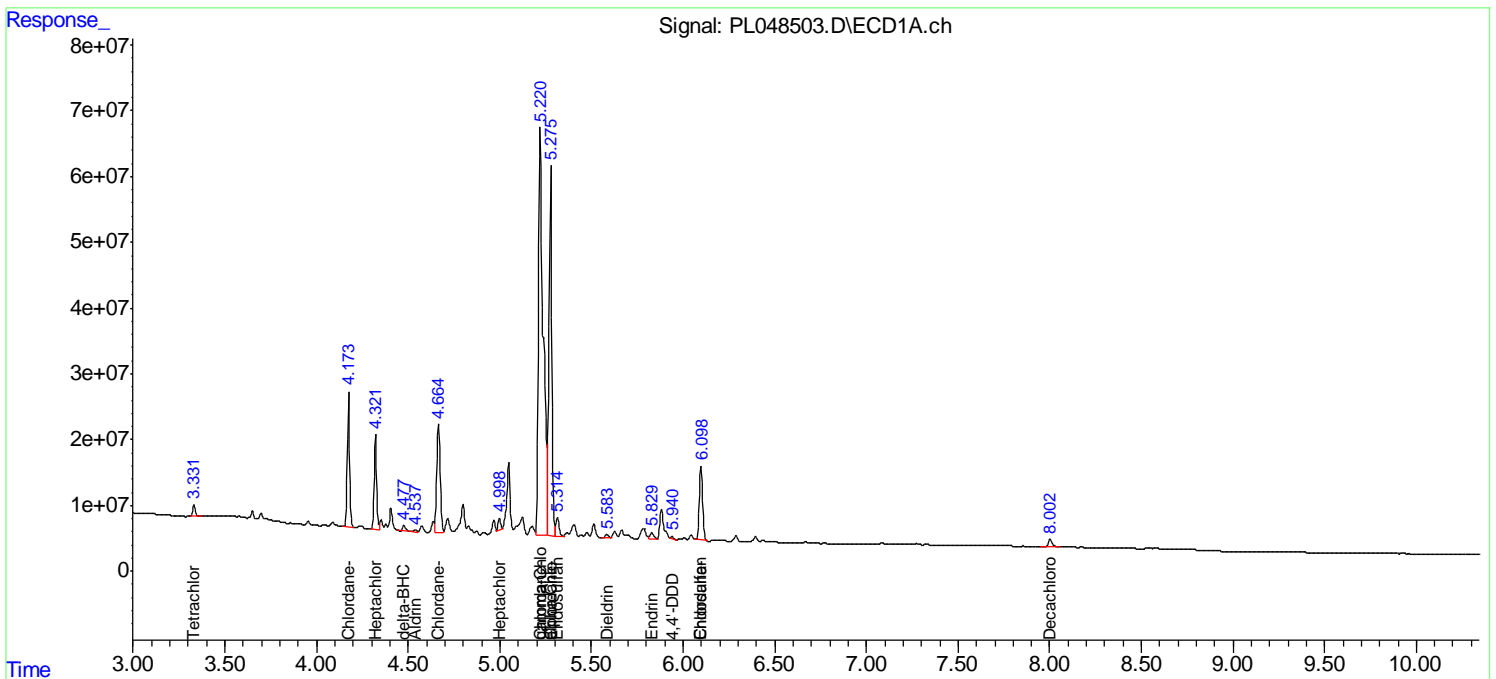
(f)=RT Delta > 1/2 Window (#)=Amounts differ by > 25% (m)=manual int.

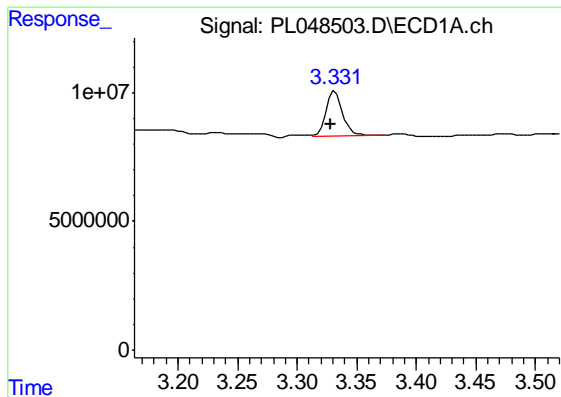
Data Path : \\74.0.250.170\terastorage\pestpcbsrv\HPCHEM1\ECD_L\Data\PL051419\
 Data File : PL048503.D
 Signal(s) : Signal #1: ECD1A.ch Signal #2: ECD2B.ch
 Acq On : 14 May 2019 10:07
 Operator : AJ\SJ
 Sample : K2779-05DL 10X
 Misc :
 ALS Vial : 6 Sample Multiplier: 1

Instrument :
 ECD_L
 Client Sampled :
 RBR-200052DL

Integration File signal 1: autoint1.e
 Integration File signal 2: autoint2.e
 Quant Time: May 15 00:56:30 2019
 Quant Method : Z:\pestpcbsrv\HPCHEM1\ECD_L\methods\PL050119.M
 Quant Title : GC Extractables
 QLast Update : Thu May 02 09:36:55 2019
 Response via : Initial Calibration
 Integrator: ChemStation

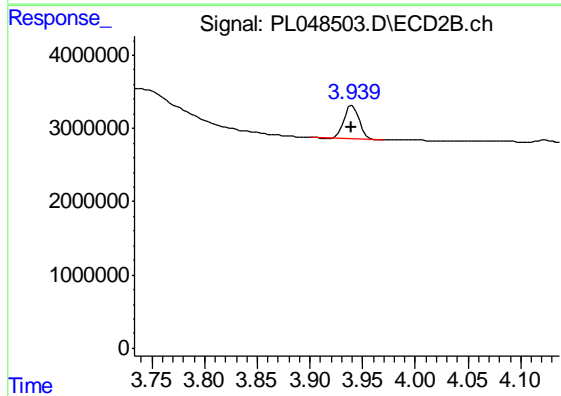
Volume Inj. : 1 µl
 Signal #1 Phase : ZB-MR2 Signal #2 Phase: ZB-MR1
 Signal #1 Info : 30M x 0.32mm x0.2 Signal #2 Info : 30M x 0.32mm x0.5µm



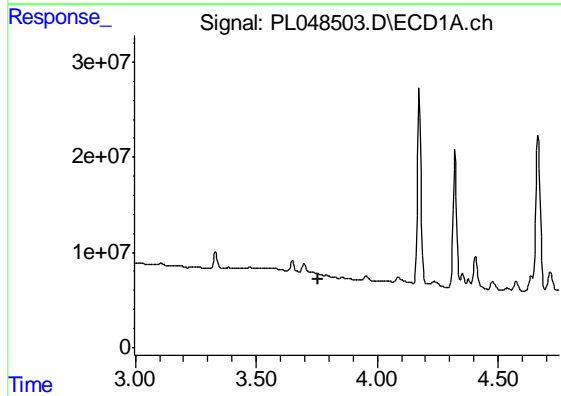


#1 Tetrachloro-m-xylene
 R.T.: 3.332 min
 Delta R.T.: 0.004 min
 Response: 17069857
 Conc: 1.76 ng/ml

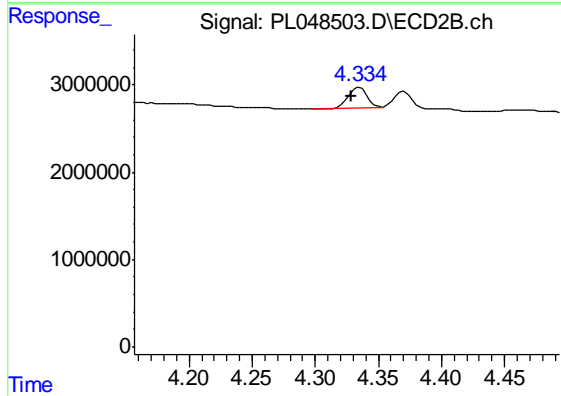
Instrument :
 ECD_L
 ClientSampleId :
 RBR-200052DL



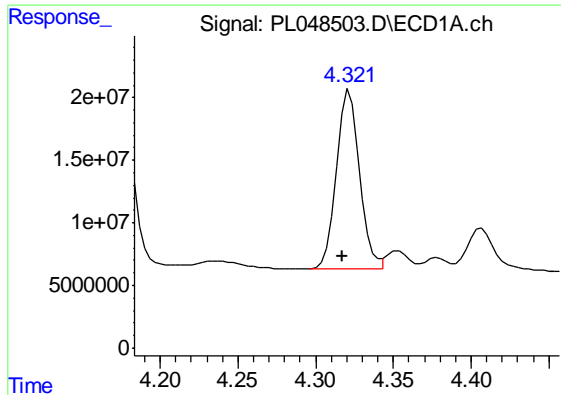
#1 Tetrachloro-m-xylene
 R.T.: 3.940 min
 Delta R.T.: 0.000 min
 Response: 4483805
 Conc: 1.80 ng/ml



#2 alpha-BHC
 R.T.: 0.000 min
 Exp R.T. : 3.756 min
 Response: 0
 Conc: N.D.



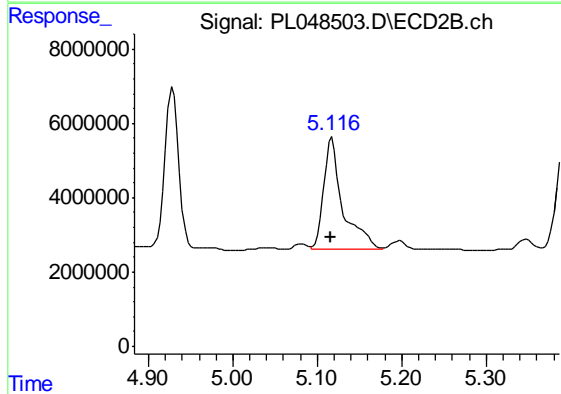
#2 alpha-BHC
 R.T.: 4.335 min
 Delta R.T.: 0.007 min
 Response: 2309270
 Conc: 0.66 ng/ml



#4 Heptachlor

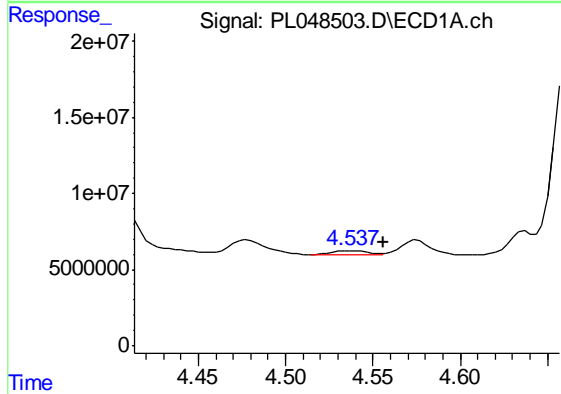
R.T.: 4.322 min
 Delta R.T.: 0.005 min
 Response: 148250679
 Conc: 10.08 ng/ml

Instrument :
 ECD_L
 ClientSampled :
 RBR-200052DL



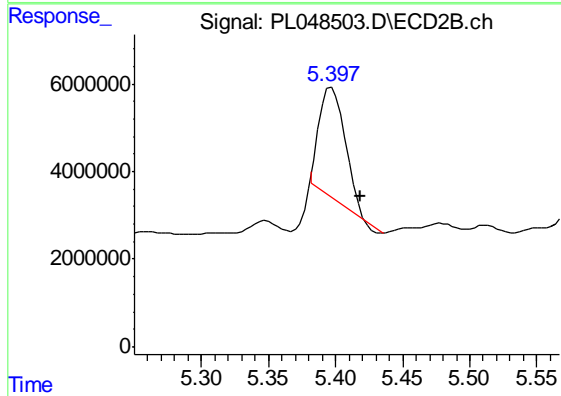
#4 Heptachlor

R.T.: 5.117 min
 Delta R.T.: 0.002 min
 Response: 47135361
 Conc: 13.62 ng/ml



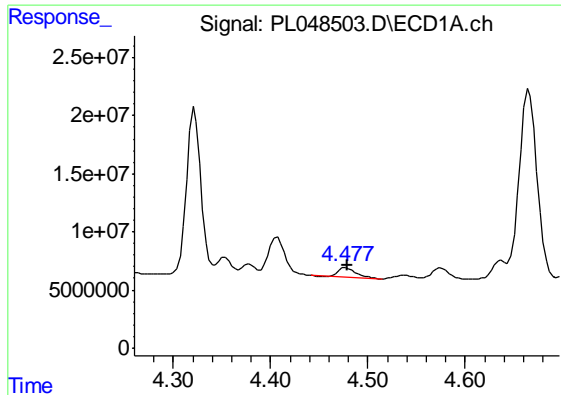
#5 Aldrin

R.T.: 4.538 min
 Delta R.T.: -0.017 min
 Response: 3916015
 Conc: 0.29 ng/ml



#5 Aldrin

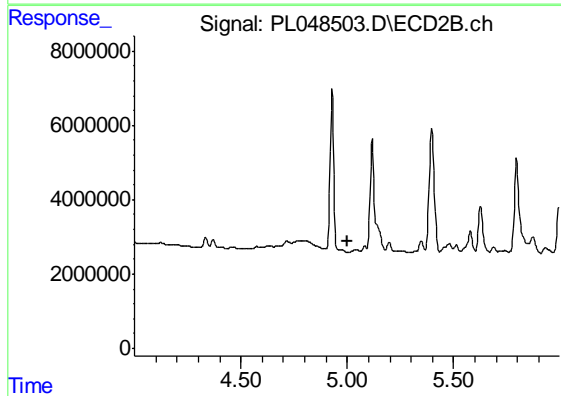
R.T.: 5.397 min
 Delta R.T.: -0.021 min
 Response: 33772942
 Conc: 10.91 ng/ml



#7 delta-BHC

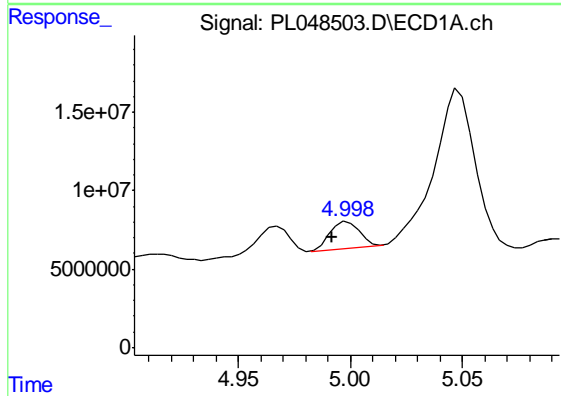
R.T.: 4.478 min
 Delta R.T.: -0.001 min
 Response: 9663119
 Conc: 0.68 ng/ml

Instrument :
 ECD_L
 ClientSampleId :
 RBR-200052DL



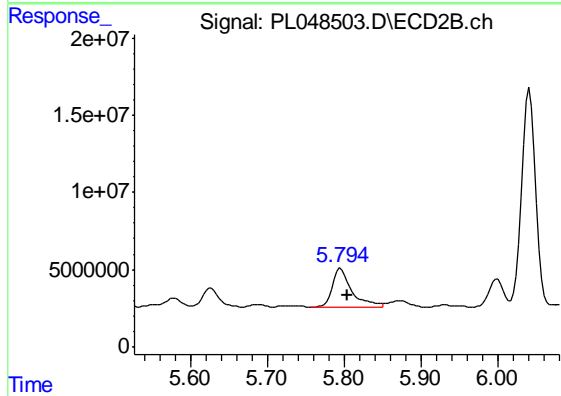
#7 delta-BHC

R.T.: 0.000 min
 Exp R.T. : 5.000 min
 Response: 0
 Conc: N.D.



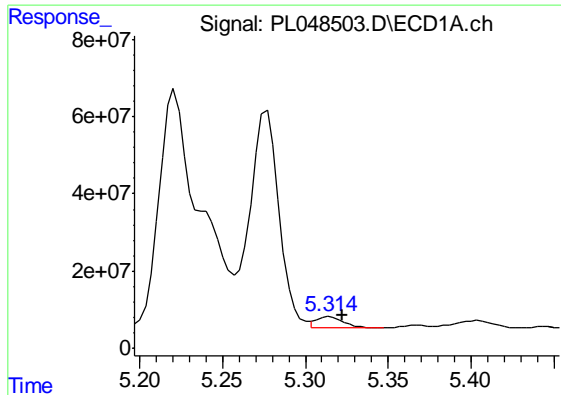
#8 Heptachlor epoxide

R.T.: 4.999 min
 Delta R.T.: 0.007 min
 Response: 15506213
 Conc: 1.20 ng/ml



#8 Heptachlor epoxide

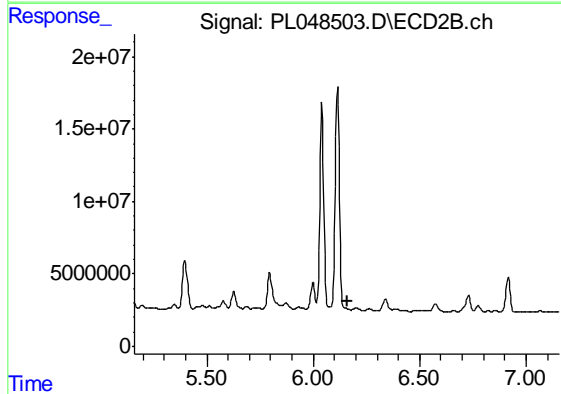
R.T.: 5.795 min
 Delta R.T.: -0.009 min
 Response: 44389598
 Conc: 15.22 ng/ml



#9 Endosulfan I

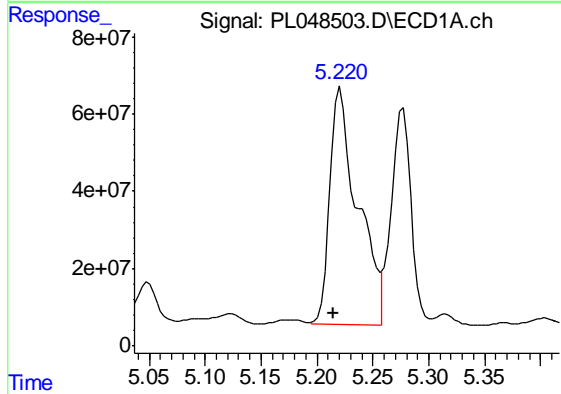
R.T.: 5.315 min
 Delta R.T.: -0.008 min
 Response: 32701258
 Conc: 2.72 ng/ml

Instrument :
 ECD_L
 ClientSampleId :
 RBR-200052DL



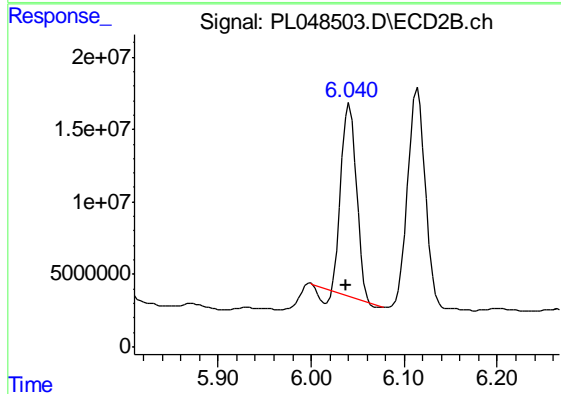
#9 Endosulfan I

R.T.: 0.000 min
 Exp R.T. : 6.159 min
 Response: 0
 Conc: N.D.



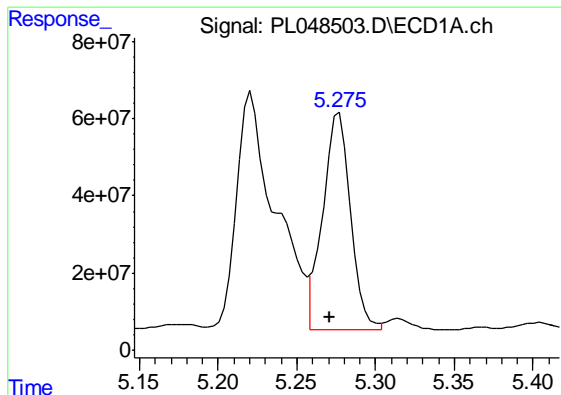
#10 gamma-Chlordane

R.T.: 5.221 min
 Delta R.T.: 0.006 min
 Response: 1054838849
 Conc: 79.00 ng/ml



#10 gamma-Chlordane

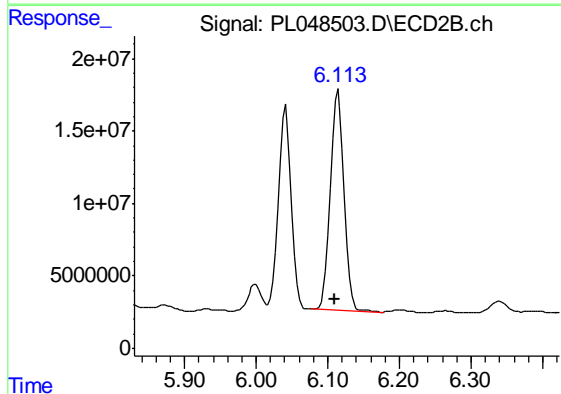
R.T.: 6.041 min
 Delta R.T.: 0.003 min
 Response: 147856105
 Conc: 48.03 ng/ml



#11 alpha-Chlordane

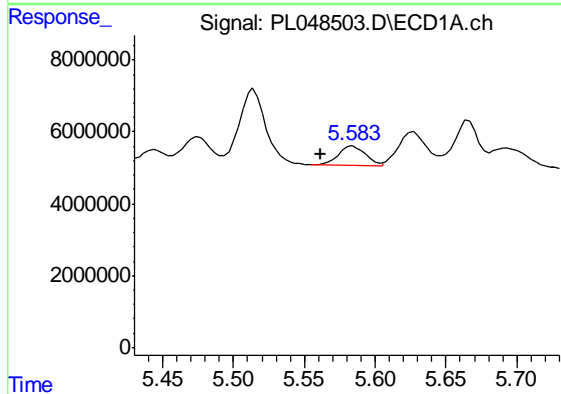
R.T.: 5.277 min
 Delta R.T.: 0.006 min
 Response: 702421576
 Conc: 53.73 ng/ml

Instrument :
 ECD_L
 ClientSampled :
 RBR-200052DL



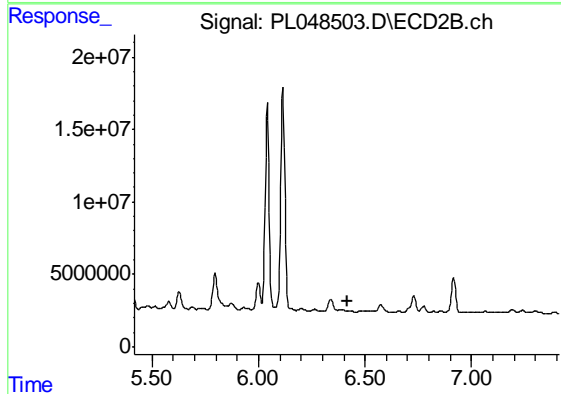
#11 alpha-Chlordane

R.T.: 6.114 min
 Delta R.T.: 0.005 min
 Response: 203677135
 Conc: 66.38 ng/ml



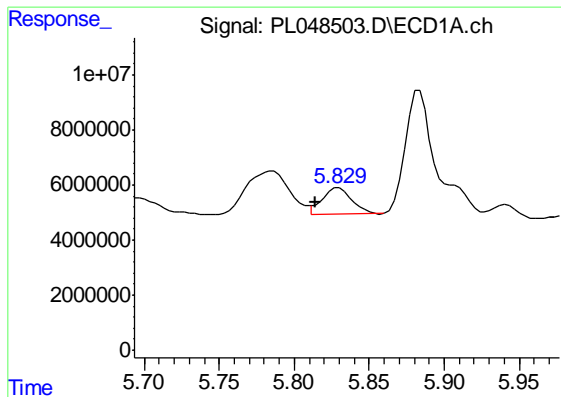
#13 Dieldrin

R.T.: 5.585 min
 Delta R.T.: 0.023 min
 Response: 7241498
 Conc: 0.56 ng/ml



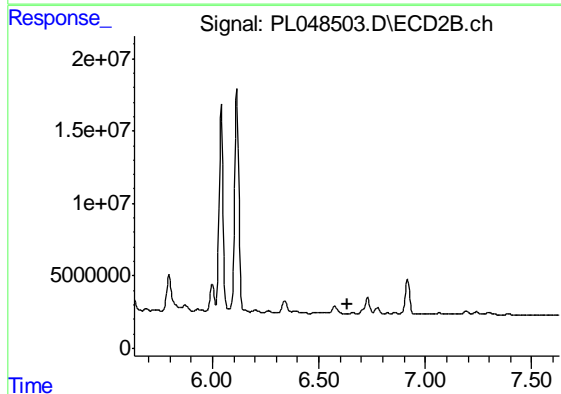
#13 Dieldrin

R.T.: 0.000 min
 Exp R.T. : 6.416 min
 Response: 0
 Conc: N.D.

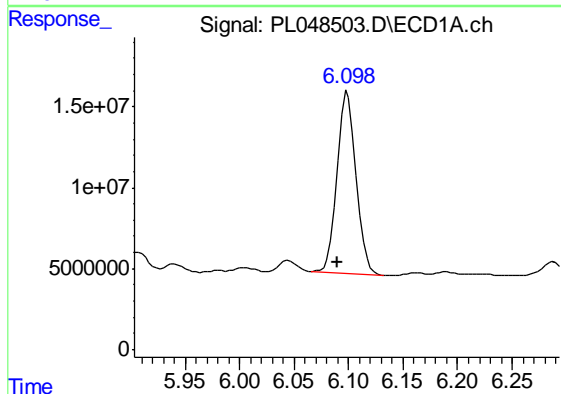


#14 Endrin
 R.T.: 5.830 min
 Delta R.T.: 0.016 min
 Response: 13238177
 Conc: 1.09 ng/ml

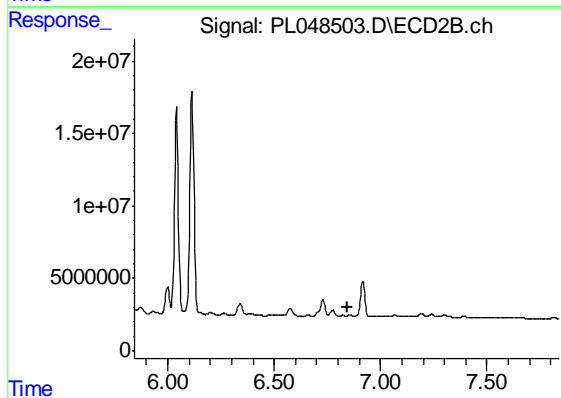
Instrument :
 ECD_L
 ClientSampleId :
 RBR-200052DL



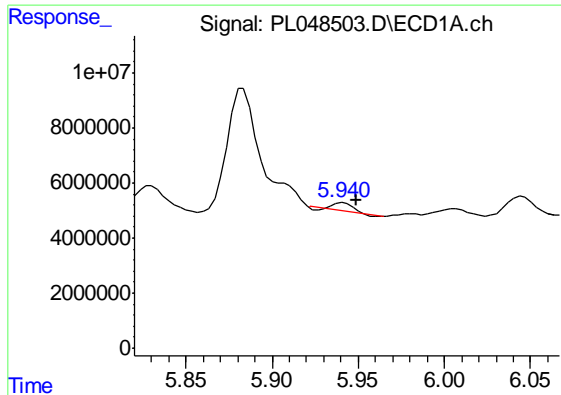
#14 Endrin
 R.T.: 0.000 min
 Exp R.T. : 6.632 min
 Response: 0
 Conc: N.D.



#15 Endosulfan II
 R.T.: 6.099 min
 Delta R.T.: 0.010 min
 Response: 136342543
 Conc: 11.81 ng/ml



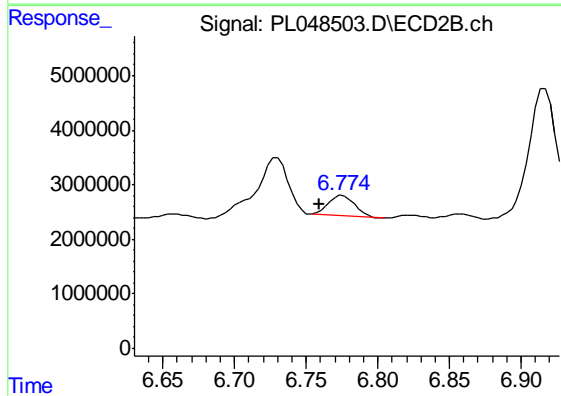
#15 Endosulfan II
 R.T.: 0.000 min
 Exp R.T. : 6.843 min
 Response: 0
 Conc: N.D.



#16 4,4'-DDD

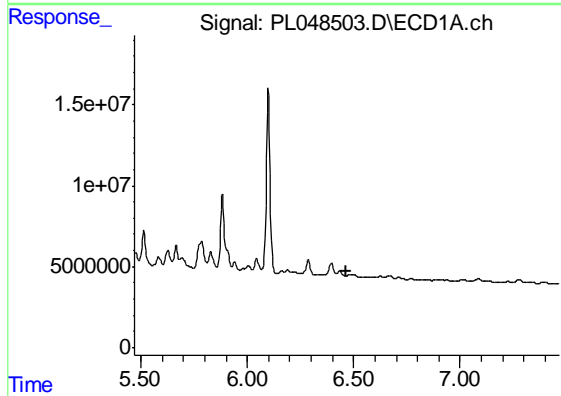
R.T.: 5.941 min
 Delta R.T.: -0.008 min
 Response: 2202585
 Conc: 0.23 ng/ml

Instrument :
 ECD_L
 ClientSampleId :
 RBR-200052DL



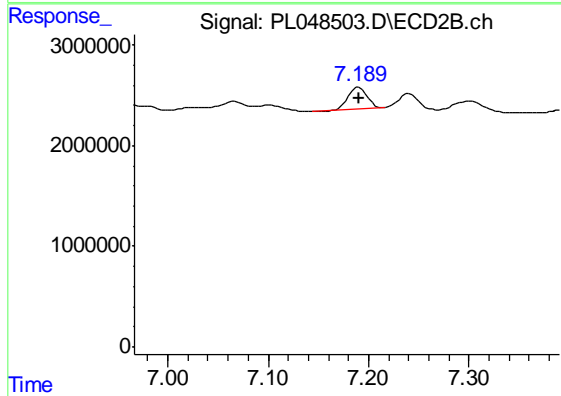
#16 4,4'-DDD

R.T.: 6.776 min
 Delta R.T.: 0.016 min
 Response: 4724381
 Conc: 2.11 ng/ml



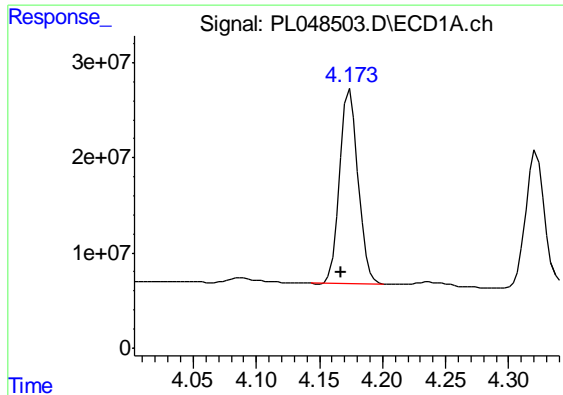
#19 Endosulfan Sulfate

R.T.: 0.000 min
 Exp R.T. : 6.468 min
 Response: 0
 Conc: N.D.



#19 Endosulfan Sulfate

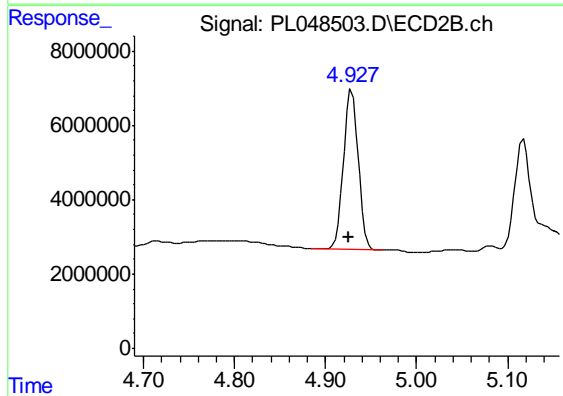
R.T.: 7.190 min
 Delta R.T.: 0.000 min
 Response: 2867204
 Conc: 1.11 ng/ml



#23 Chlordane-1

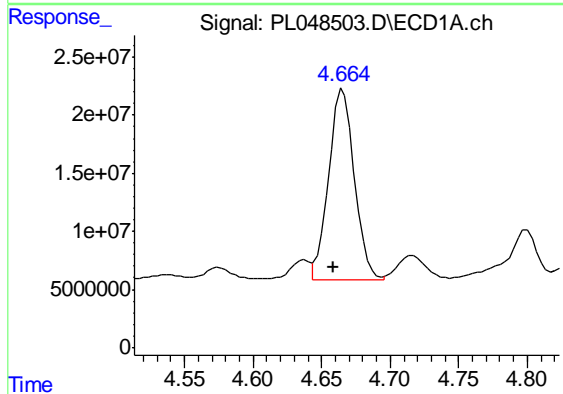
R.T.: 4.174 min
 Delta R.T.: 0.007 min
 Response: 207310253
 Conc: 461.81 ng/ml

Instrument :
 ECD_L
 ClientSampleId :
 RBR-200052DL



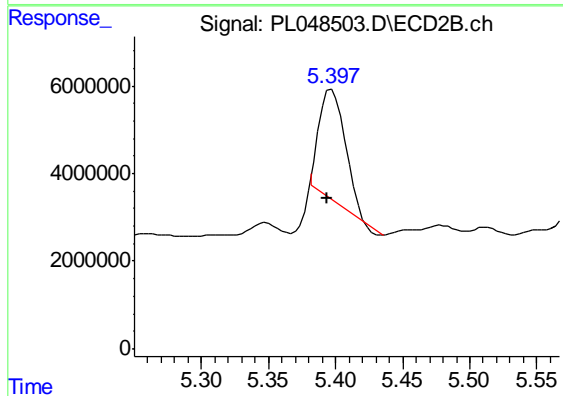
#23 Chlordane-1

R.T.: 4.929 min
 Delta R.T.: 0.004 min
 Response: 48543208
 Conc: 397.42 ng/ml



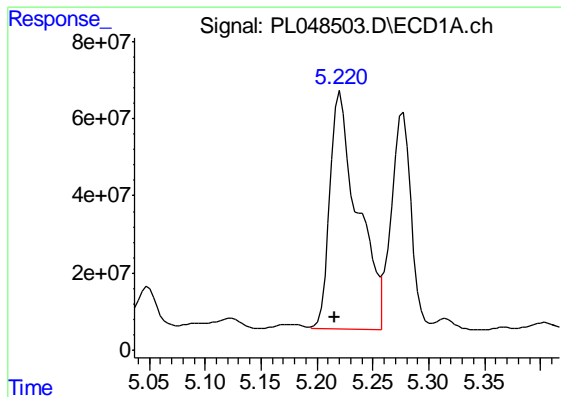
#24 Chlordane-2

R.T.: 4.665 min
 Delta R.T.: 0.007 min
 Response: 214766305
 Conc: 415.16 ng/ml



#24 Chlordane-2

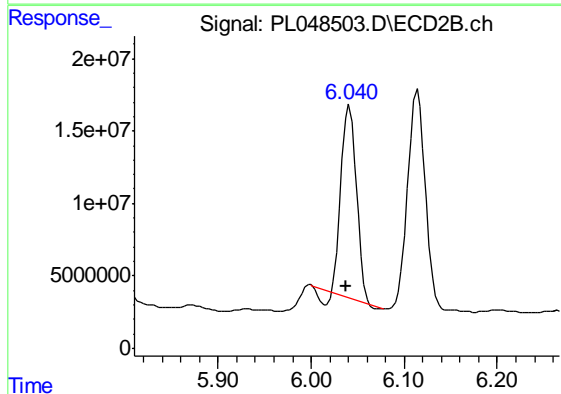
R.T.: 5.397 min
 Delta R.T.: 0.004 min
 Response: 33772942
 Conc: 261.12 ng/ml



#25 Chlordane-3

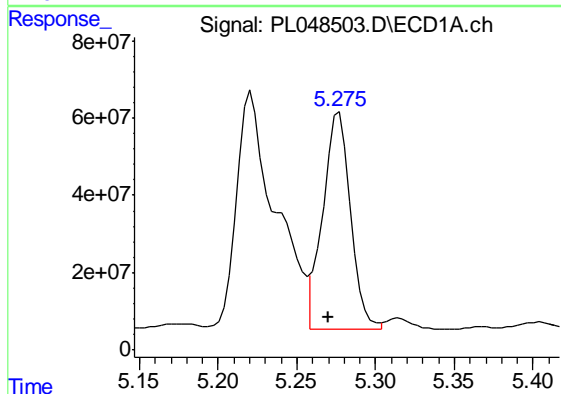
R.T.: 5.221 min
 Delta R.T.: 0.006 min
 Response: 1054838849
 Conc: 669.93 ng/ml

Instrument :
 ECD_L
 ClientSampled :
 RBR-200052DL



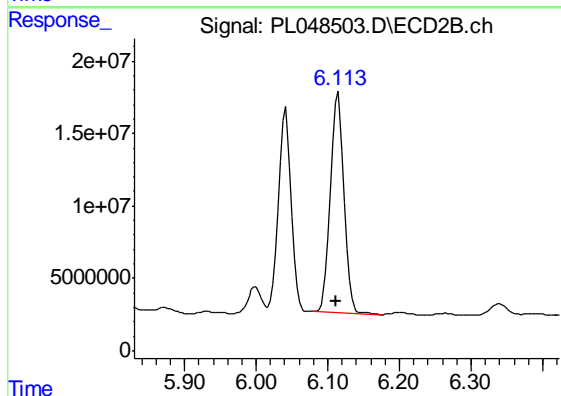
#25 Chlordane-3

R.T.: 6.041 min
 Delta R.T.: 0.003 min
 Response: 147856105
 Conc: 337.39 ng/ml



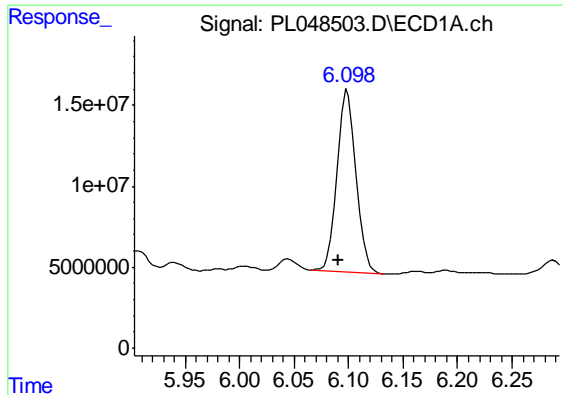
#26 Chlordane-4

R.T.: 5.277 min
 Delta R.T.: 0.006 min
 Response: 702421576
 Conc: 483.82 ng/ml



#26 Chlordane-4

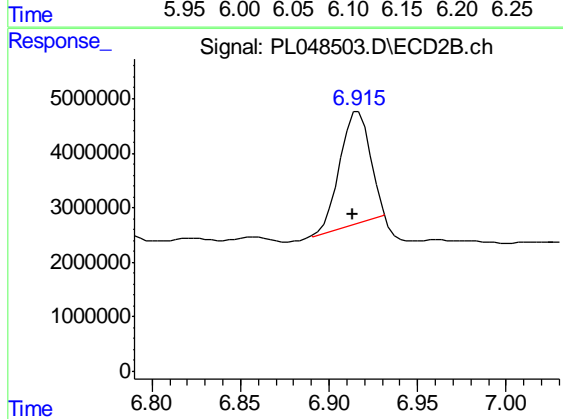
R.T.: 6.114 min
 Delta R.T.: 0.003 min
 Response: 203677135
 Conc: 388.25 ng/ml



#27 Chlordane-5

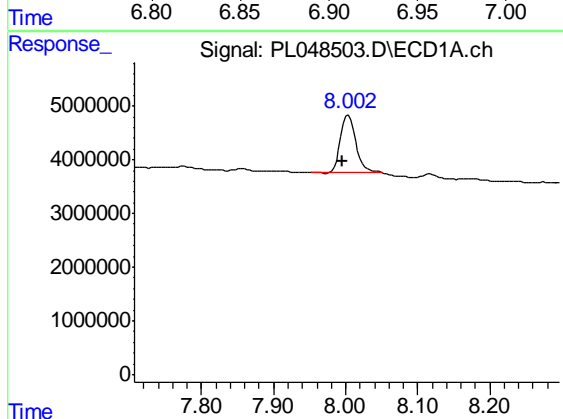
R.T.: 6.099 min
 Delta R.T.: 0.008 min
 Response: 136342543
 Conc: 290.36 ng/ml

Instrument :
 ECD_L
 ClientSampleId :
 RBR-200052DL



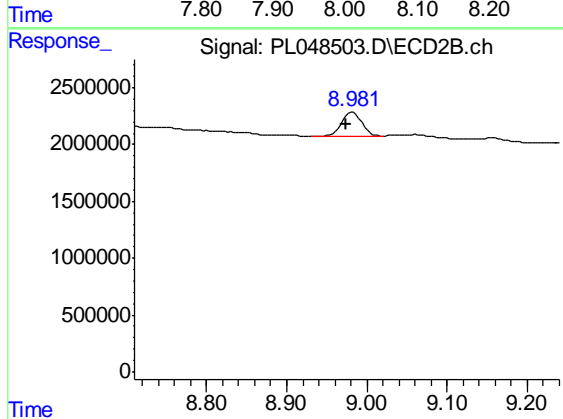
#27 Chlordane-5

R.T.: 6.917 min
 Delta R.T.: 0.003 min
 Response: 24512574
 Conc: 241.10 ng/ml



#28 Decachlorobiphenyl

R.T.: 8.004 min
 Delta R.T.: 0.008 min
 Response: 15723522
 Conc: 1.56 ng/ml



#28 Decachlorobiphenyl

R.T.: 8.982 min
 Delta R.T.: 0.007 min
 Response: 3591369
 Conc: 1.35 ng/ml