

Data Path : \\74.0.250.170\terastorage\pestpcbsrv\HPCHEM1\ECD_L\Data\PL051419\
 Data File : PL048504.D
 Signal(s) : Signal #1: ECD1A.ch Signal #2: ECD2B.ch
 Acq On : 14 May 2019 10:22
 Operator : AJ\SJ
 Sample : PB119669BL
 Misc :
 ALS Vial : 7 Sample Multiplier: 1

Instrument :
 ECD_L
 ClientSampleId :
 PB119669BL

Integration File signal 1: autoint1.e
 Integration File signal 2: autoint2.e
 Quant Time: May 15 00:56:43 2019
 Quant Method : Z:\pestpcbsrv\HPCHEM1\ECD_L\methods\PL050119.M
 Quant Title : GC Extractables
 QLast Update : Thu May 02 09:36:55 2019
 Response via : Initial Calibration
 Integrator: ChemStation

Volume Inj. : 1 µl
 Signal #1 Phase : ZB-MR2 Signal #2 Phase: ZB-MR1
 Signal #1 Info : 30M x 0.32mm x0.2 Signal #2 Info : 30M x 0.32mm x0.5µm

Compound	RT#1	RT#2	Resp#1	Resp#2	ng/ml	ng/ml

System Monitoring Compounds						
1) SA Tetrachlo...	3.328	3.940	182.9E6	46917671	18.884	18.836
28) SA Decachlor...	7.999	8.979	193.8E6	49412768	19.276	18.616

Target Compounds

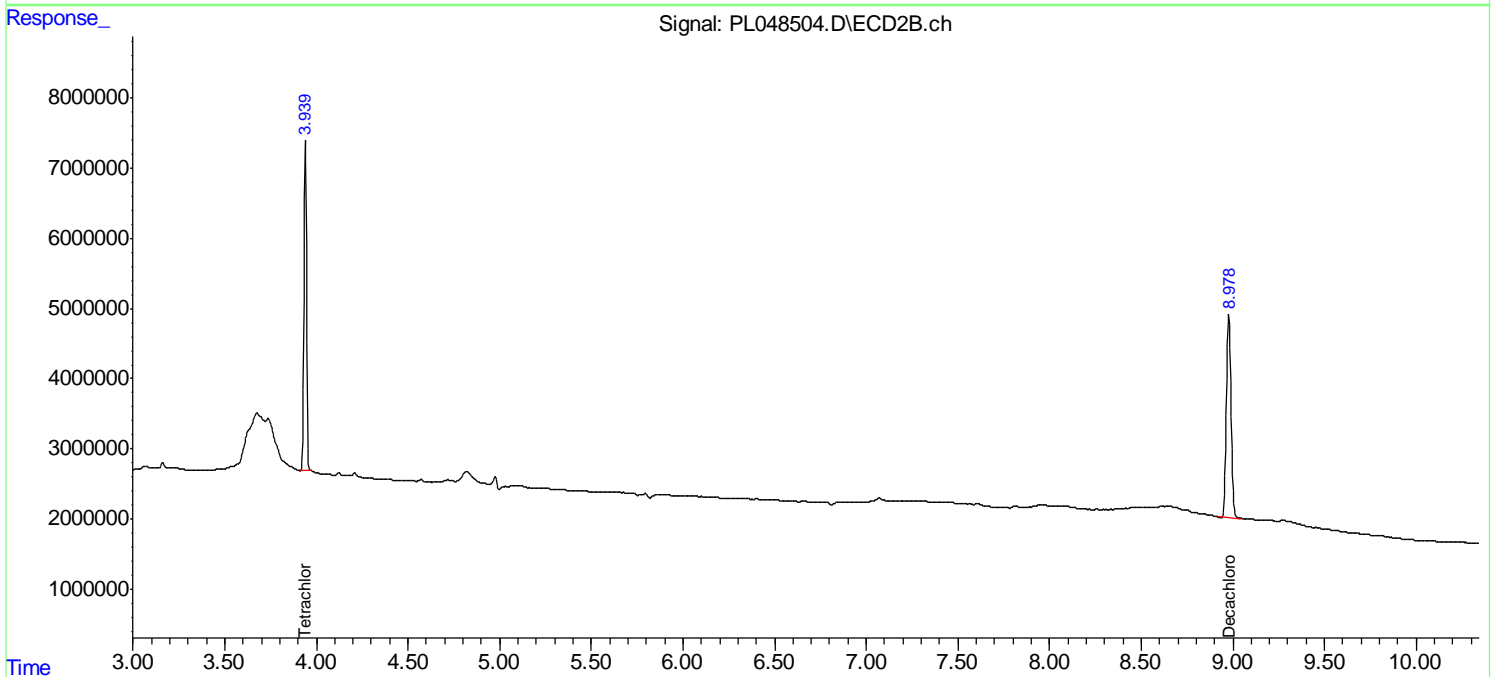
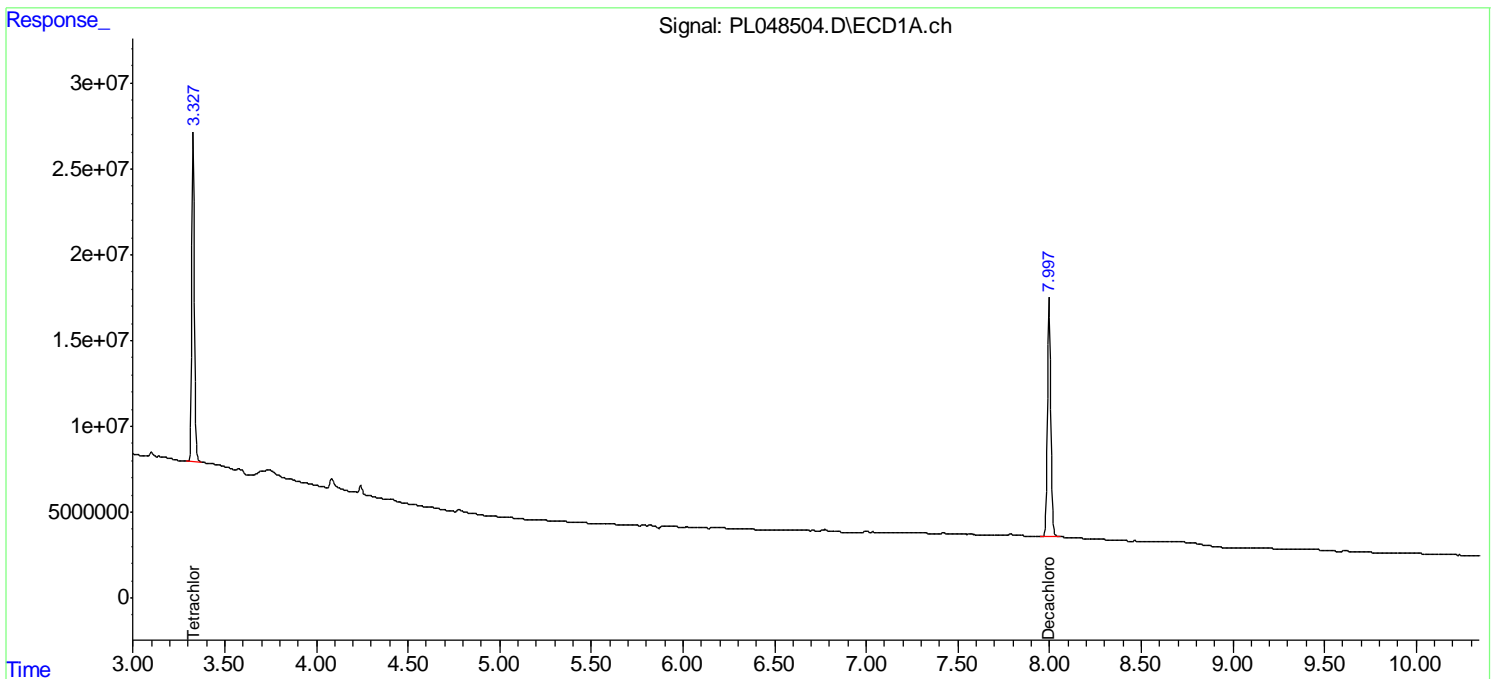
(f)=RT Delta > 1/2 Window (#)=Amounts differ by > 25% (m)=manual int.

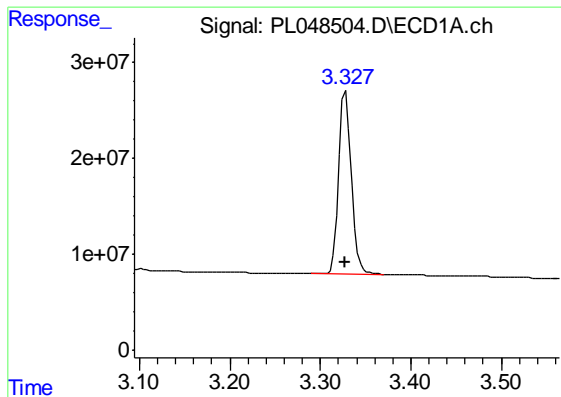
Data Path : \\74.0.250.170\terastorage\pestpcbsrv\HPCHEM1\ECD_L\Data\PL051419\
 Data File : PL048504.D
 Signal(s) : Signal #1: ECD1A.ch Signal #2: ECD2B.ch
 Acq On : 14 May 2019 10:22
 Operator : AJ\SJ
 Sample : PB119669BL
 Misc :
 ALS Vial : 7 Sample Multiplier: 1

Instrument :
 ECD_L
ClientSampled :
 PB119669BL

Integration File signal 1: autoint1.e
 Integration File signal 2: autoint2.e
 Quant Time: May 15 00:56:43 2019
 Quant Method : Z:\pestpcbsrv\HPCHEM1\ECD_L\methods\PL050119.M
 Quant Title : GC Extractables
 QLast Update : Thu May 02 09:36:55 2019
 Response via : Initial Calibration
 Integrator: ChemStation

Volume Inj. : 1 µl
 Signal #1 Phase : ZB-MR2 Signal #2 Phase: ZB-MR1
 Signal #1 Info : 30M x 0.32mm x0.2 Signal #2 Info : 30M x 0.32mm x0.5µm

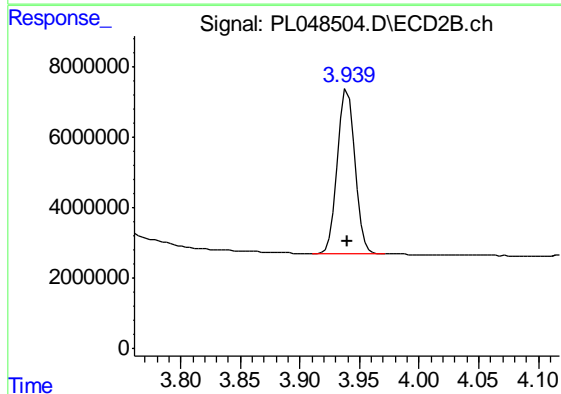




#1 Tetrachloro-m-xylene

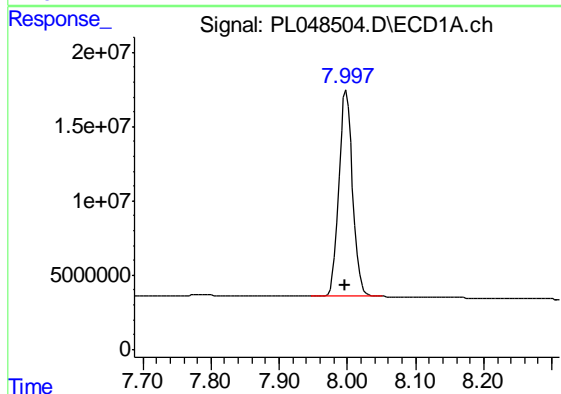
R.T.: 3.328 min
Delta R.T.: 0.000 min
Response: 182927066
Conc: 18.88 ng/ml

Instrument :
ECD_L
ClientSampleId :
PB119669BL



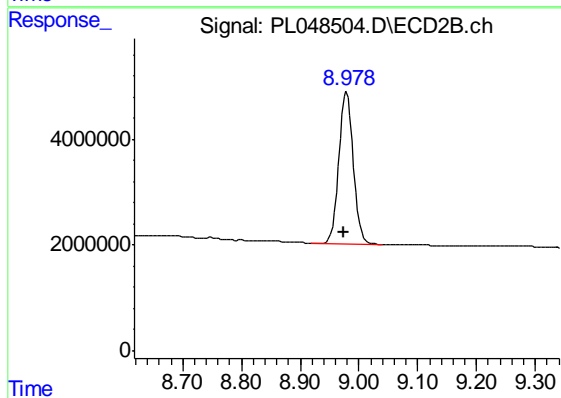
#1 Tetrachloro-m-xylene

R.T.: 3.940 min
Delta R.T.: 0.000 min
Response: 46917671
Conc: 18.84 ng/ml



#28 Decachlorobiphenyl

R.T.: 7.999 min
Delta R.T.: 0.003 min
Response: 193801683
Conc: 19.28 ng/ml



#28 Decachlorobiphenyl

R.T.: 8.979 min
Delta R.T.: 0.004 min
Response: 49412768
Conc: 18.62 ng/ml