

Data Path : Z:\pestpcbsrv\HPCHEM1\ECD_L\Data\PL051420\
 Data File : PL058707.D
 Signal(s) : Signal #1: ECD1A.ch Signal #2: ECD2B.ch
 Acq On : 14 May 2020 11:16
 Operator : AJ\MA
 Sample : L2182-01
 Misc : 25 PPB MDL
 ALS Vial : 10 Sample Multiplier: 1

Instrument :
 ECD_L
 ClientSampleId :

Integration File signal 1: autoint1.e
 Integration File signal 2: autoint2.e
 Quant Time: May 14 23:50:43 2020
 Quant Method : Z:\pestpcbsrv\HPCHEM1\ECD_L\methods\PL051220.M
 Quant Title : GC Extractables
 QLast Update : Thu May 14 06:40:09 2020
 Response via : Initial Calibration
 Integrator: ChemStation

Volume Inj. : 1 µl
 Signal #1 Phase : ZB-MR2 Signal #2 Phase: ZB-MR1
 Signal #1 Info : 30M x 0.32mm x0.2 Signal #2 Info : 30M x 0.32mm x0.5µm

	Compound	RT#1	RT#2	Resp#1	Resp#2	ng/ml	ng/ml

System Monitoring Compounds							
1)	SA Tetrachlo...	3.531	4.077	35222206	47925699	21.440	22.141
28)	SA Decachlor...	8.318	9.191	30373837	42996636	23.261	24.329
Target Compounds							
4)	MA Heptachlor	4.568	5.271	1950492	3009195	1.032	1.074
5)	MB Aldrin	0.000	5.552f	0	2391914	N.D.	0.961 #
7)	B delta-BHC	4.743f	5.120f	642708	910794	0.346	0.321
8)	B Heptachlo...	0.000	5.985f	0	742236	N.D.	0.309 #
10)	B gamma-Chl...	5.493	6.202	3481187	8410216	2.241	3.580 #
11)	B alpha-Chl...	5.552	6.277	2759557	10325565	1.772	4.405 #
14)	MA Endrin	0.000	6.827f	0	159603	N.D.	0.088 #
15)	B Endosulfa...	6.391	7.014	1310374	-223536	0.950	N.D. #
16)	A 4,4'-DDD	0.000	6.943f	0	113313	N.D.	0.065 #
22)	Mirex	0.000	8.306	0	442423	N.D.	0.282 #
23)	Chlordane-1	4.413	5.082	1264416	2336602	25.213	29.198
24)	Chlordane-2	4.919	5.552	1536058	2391914	28.278	27.990
25)	Chlordane-3	5.493	6.202	3481187	8410216	24.883	27.767
26)	Chlordane-4	5.552	6.277	2759557	10325565	24.044	28.331
27)	Chlordane-5	6.391	7.085	1310374	1665791	26.848	26.683

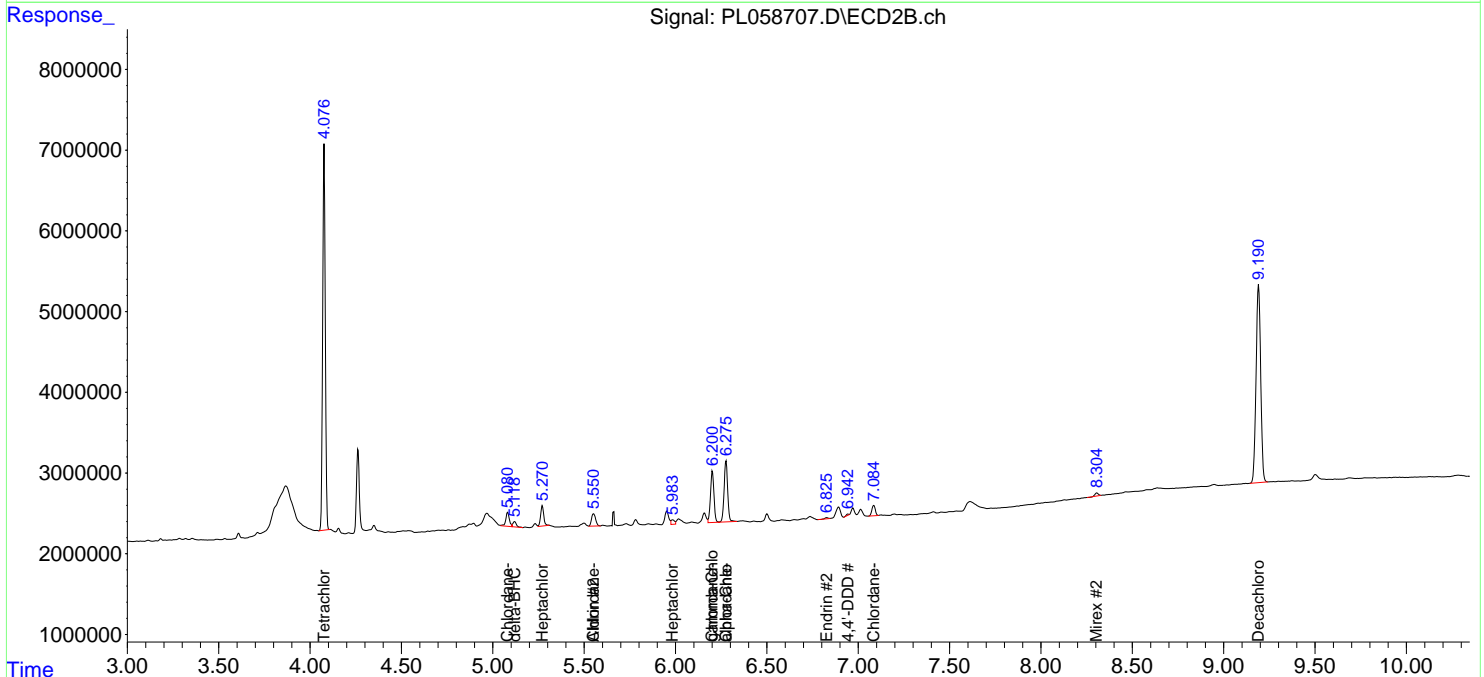
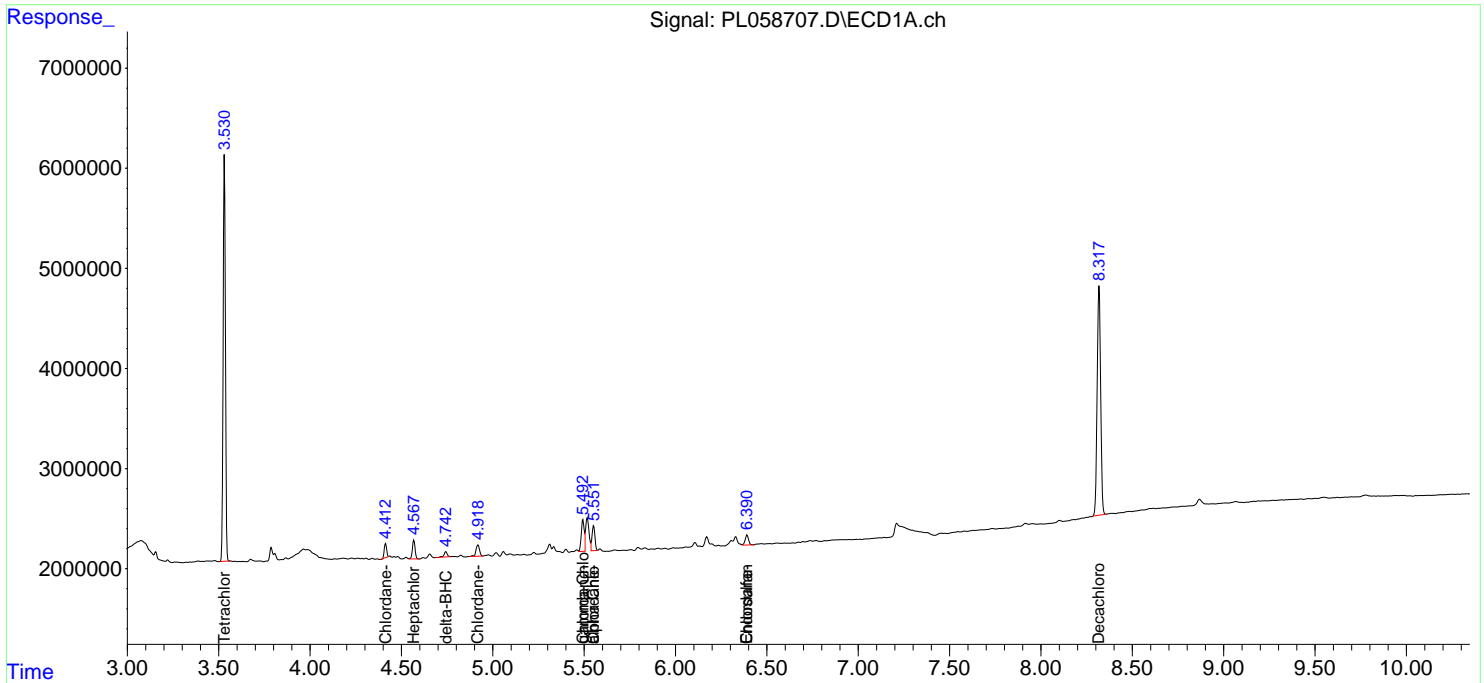
(f)=RT Delta > 1/2 Window (#)=Amounts differ by > 25% (m)=manual int.

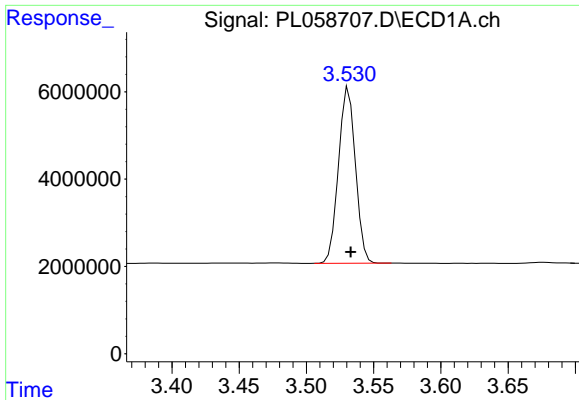
Data Path : Z:\pestpcbsrv\HPCHEM1\ECD_L\Data\PL051420\
 Data File : PL058707.D
 Signal(s) : Signal #1: ECD1A.ch Signal #2: ECD2B.ch
 Acq On : 14 May 2020 11:16
 Operator : AJ\MA
 Sample : L2182-01
 Misc : 25 PPB MDL
 ALS Vial : 10 Sample Multiplier: 1

Instrument :
 ECD_L
 ClientSampled :

Integration File signal 1: autoint1.e
 Integration File signal 2: autoint2.e
 Quant Time: May 14 23:50:43 2020
 Quant Method : Z:\pestpcbsrv\HPCHEM1\ECD_L\methods\PL051220.M
 Quant Title : GC Extractables
 QLast Update : Thu May 14 06:40:09 2020
 Response via : Initial Calibration
 Integrator: ChemStation

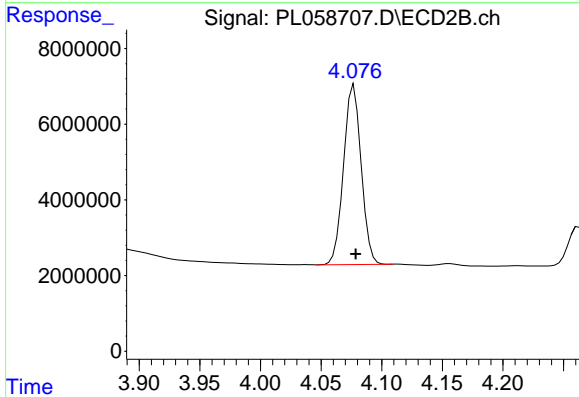
Volume Inj. : 1 µl
 Signal #1 Phase : ZB-MR2 Signal #2 Phase: ZB-MR1
 Signal #1 Info : 30M x 0.32mm x0.2 Signal #2 Info : 30M x 0.32mm x0.5µm



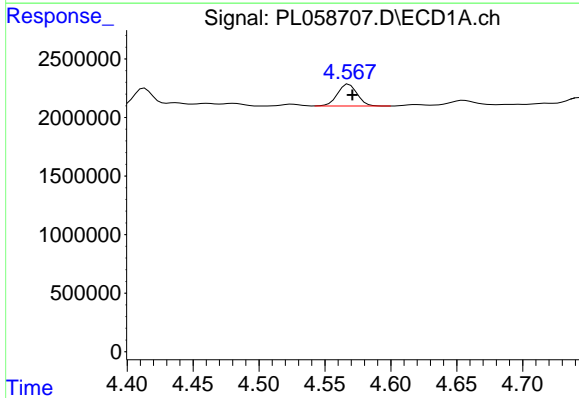


#1 Tetrachloro-m-xylene
 R.T.: 3.531 min
 Delta R.T.: -0.002 min
 Response: 3522206
 Conc: 21.44 ng/ml

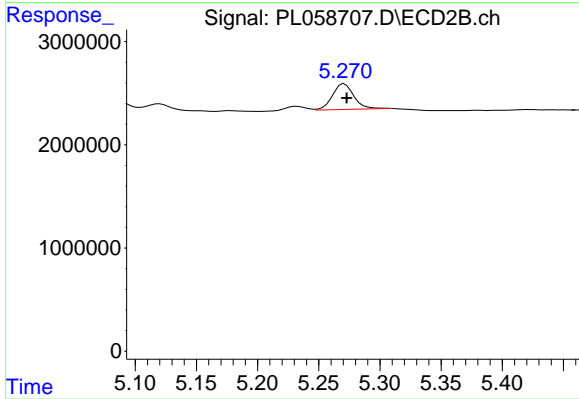
Instrument :
 ECD_L
 ClientSampled :



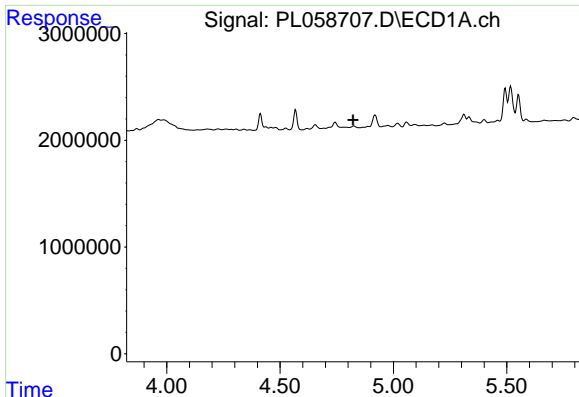
#1 Tetrachloro-m-xylene
 R.T.: 4.077 min
 Delta R.T.: -0.002 min
 Response: 47925699
 Conc: 22.14 ng/ml



#4 Heptachlor
 R.T.: 4.568 min
 Delta R.T.: -0.002 min
 Response: 1950492
 Conc: 1.03 ng/ml

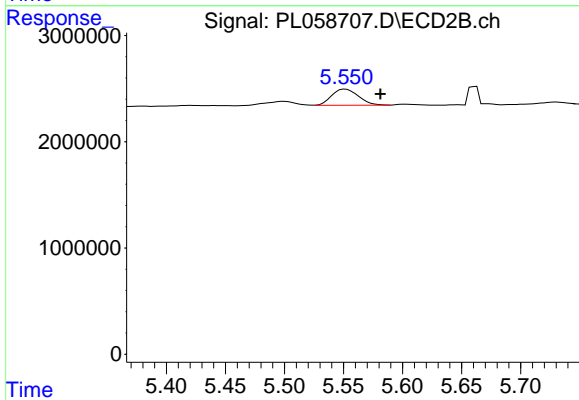


#4 Heptachlor
 R.T.: 5.271 min
 Delta R.T.: -0.002 min
 Response: 3009195
 Conc: 1.07 ng/ml

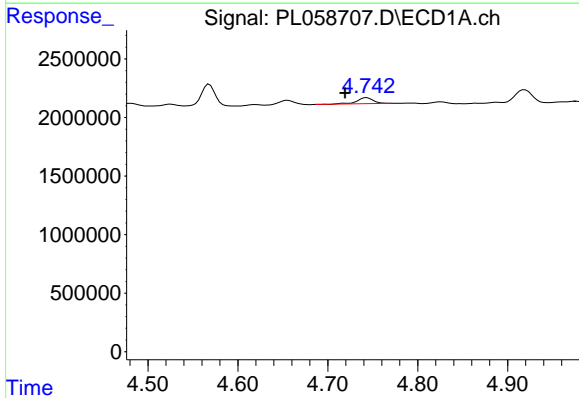


#5 Aldrin
 R.T.: 0.000 min
 Exp R.T.: 4.822 min
 Response: 0
 Conc: N.D.

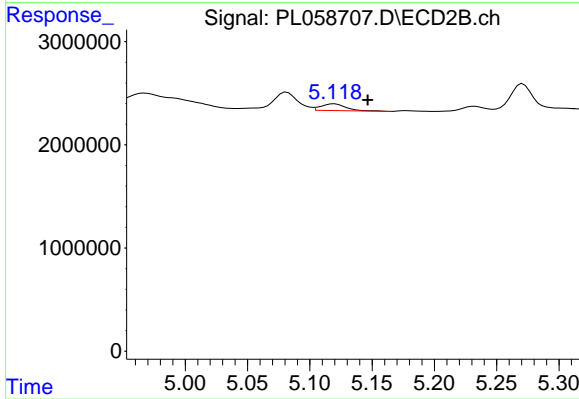
Instrument :
 ECD_L
 ClientSampled :



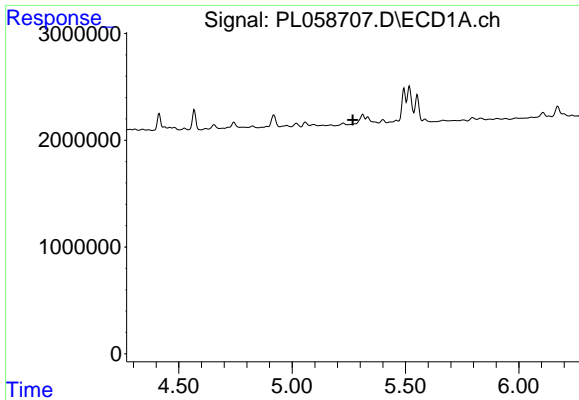
#5 Aldrin
 R.T.: 5.552 min
 Delta R.T.: -0.029 min
 Response: 2391914
 Conc: 0.96 ng/ml



#7 delta-BHC
 R.T.: 4.743 min
 Delta R.T.: 0.024 min
 Response: 642708
 Conc: 0.35 ng/ml



#7 delta-BHC
 R.T.: 5.120 min
 Delta R.T.: -0.027 min
 Response: 910794
 Conc: 0.32 ng/ml



#8 Heptachlor epoxide

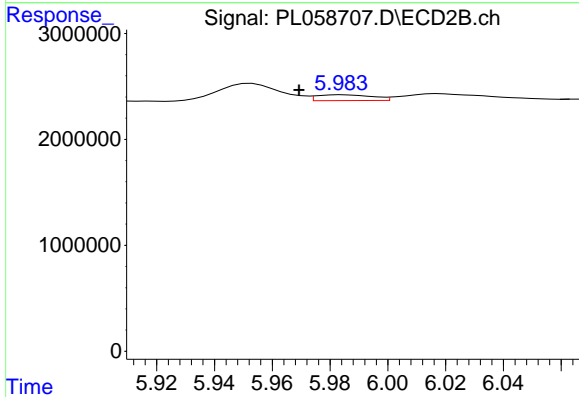
R.T.: 0.000 min

Exp R.T.: 5.268 min

Response: 0

Conc: N.D.

Instrument :
ECD_L
ClientSampleId :



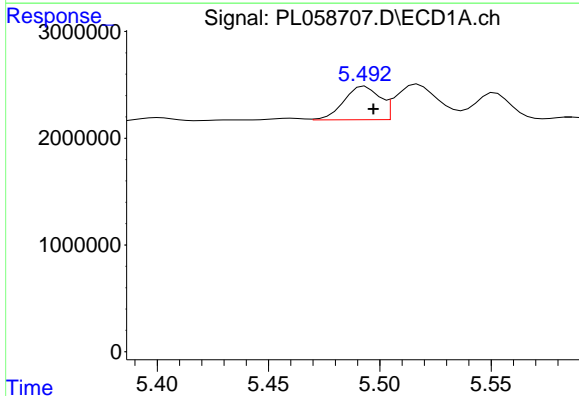
#8 Heptachlor epoxide

R.T.: 5.985 min

Delta R.T.: 0.015 min

Response: 742236

Conc: 0.31 ng/ml



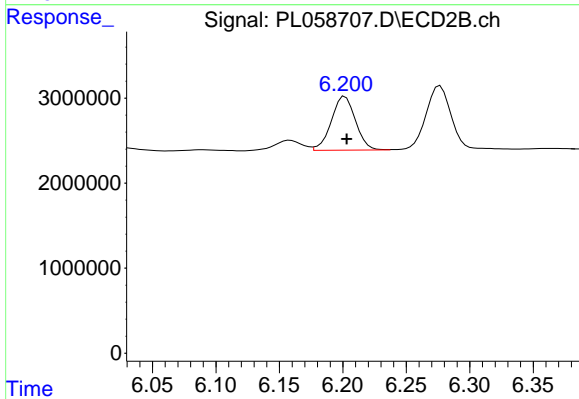
#10 gamma-Chlordane

R.T.: 5.493 min

Delta R.T.: -0.004 min

Response: 3481187

Conc: 2.24 ng/ml



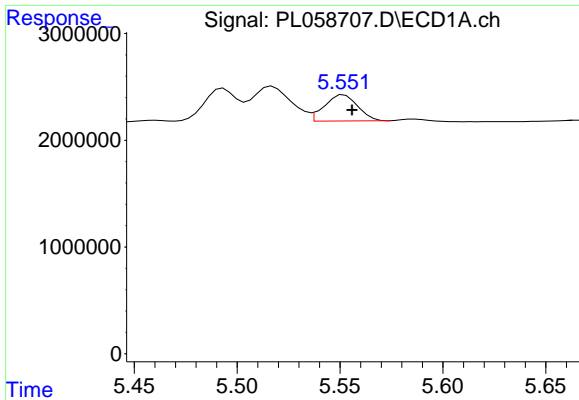
#10 gamma-Chlordane

R.T.: 6.202 min

Delta R.T.: -0.001 min

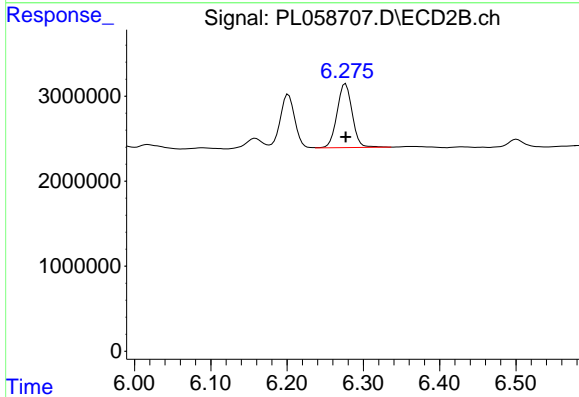
Response: 8410216

Conc: 3.58 ng/ml

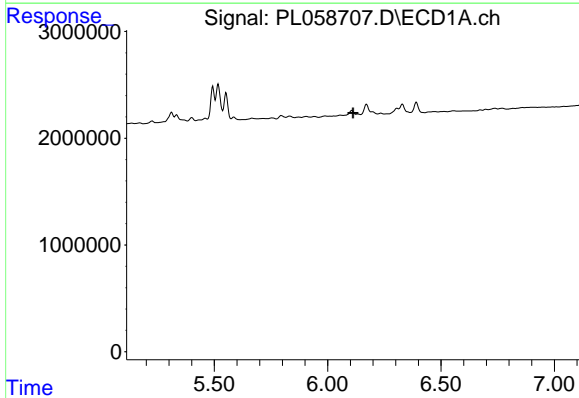


#11 alpha-Chlordane
 R.T.: 5.552 min
 Delta R.T.: -0.004 min
 Response: 2759557
 Conc: 1.77 ng/ml

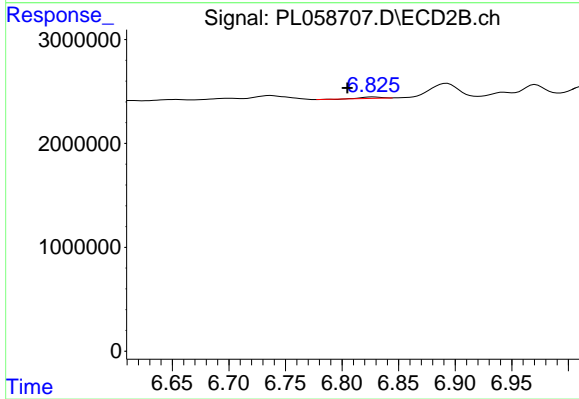
Instrument :
 ECD_L
 ClientSampled :



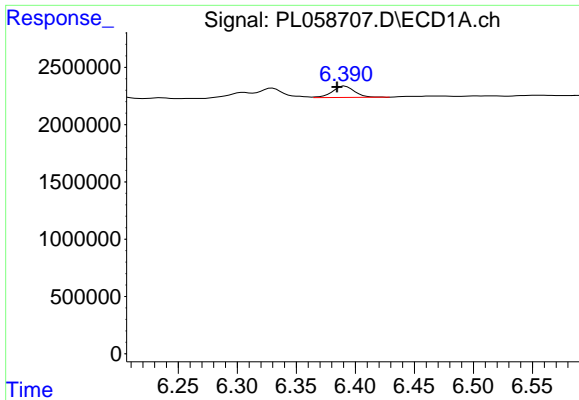
#11 alpha-Chlordane
 R.T.: 6.277 min
 Delta R.T.: 0.000 min
 Response: 10325565
 Conc: 4.40 ng/ml



#14 Endrin
 R.T.: 0.000 min
 Exp R.T. : 6.112 min
 Response: 0
 Conc: N.D.

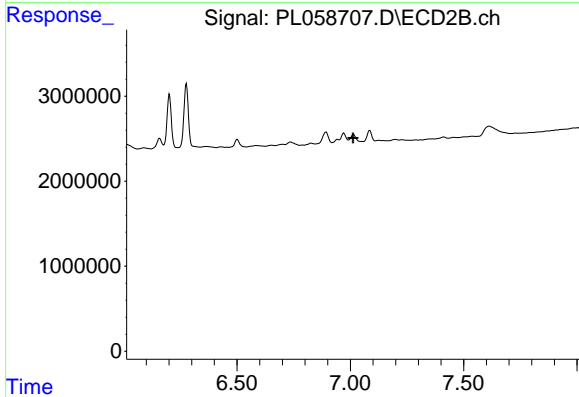


#14 Endrin
 R.T.: 6.827 min
 Delta R.T.: 0.022 min
 Response: 159603
 Conc: 0.09 ng/ml

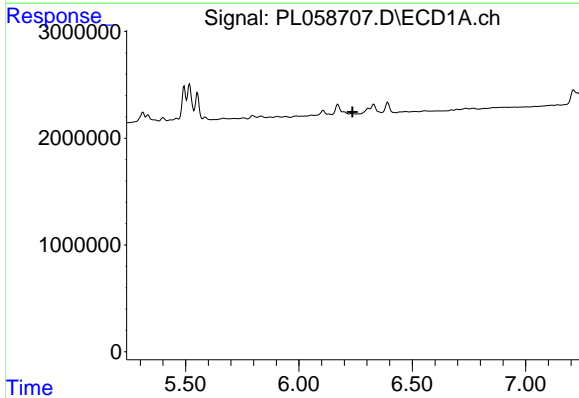


#15 Endosulfan II
 R.T.: 6.391 min
 Delta R.T.: 0.007 min
 Response: 1310374
 Conc: 0.95 ng/ml

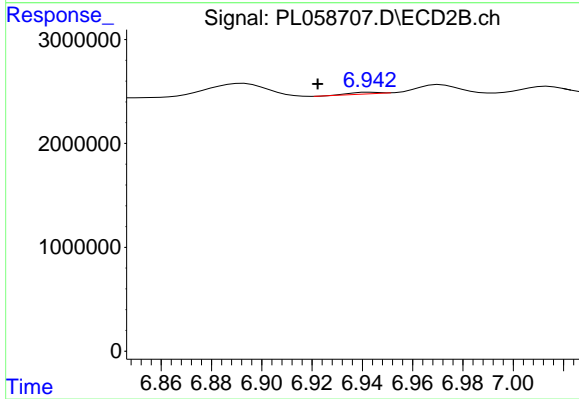
Instrument :
 ECD_L
 ClientSampled :



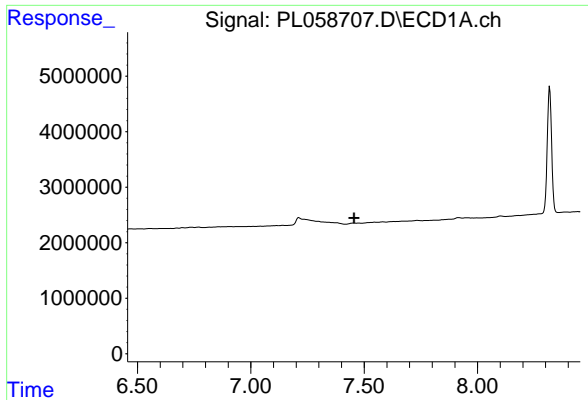
#15 Endosulfan II
 R.T.: 7.014 min
 Delta R.T.: 0.001 min
 Response: -223536
 Conc: N.D.



#16 4,4'-DDD
 R.T.: 0.000 min
 Exp R.T. : 6.237 min
 Response: 0
 Conc: N.D.

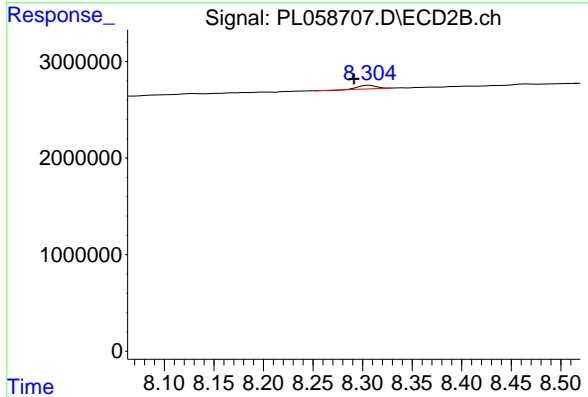


#16 4,4'-DDD
 R.T.: 6.943 min
 Delta R.T.: 0.021 min
 Response: 113313
 Conc: 0.06 ng/ml

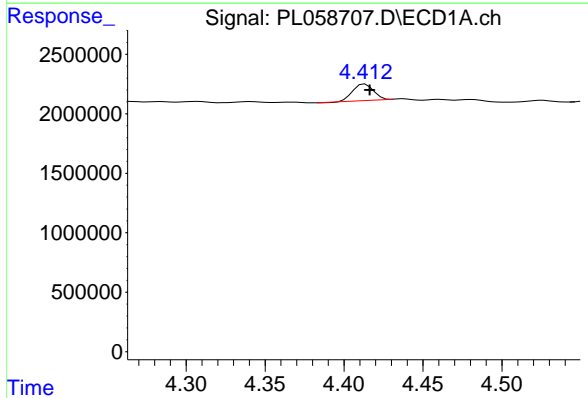


#22 Mirex
 R.T.: 0.000 min
 Exp R.T.: 7.456 min
 Response: 0
 Conc: N.D.

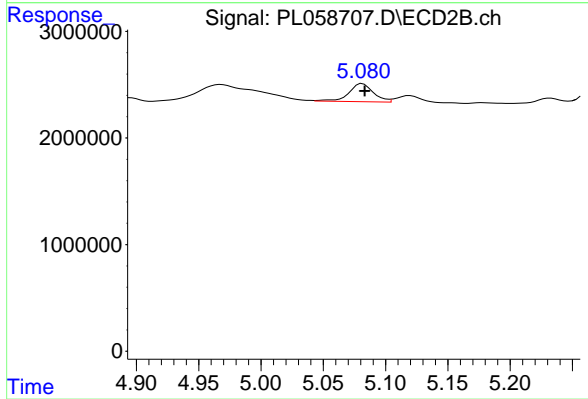
Instrument :
 ECD_L
 ClientSampled :



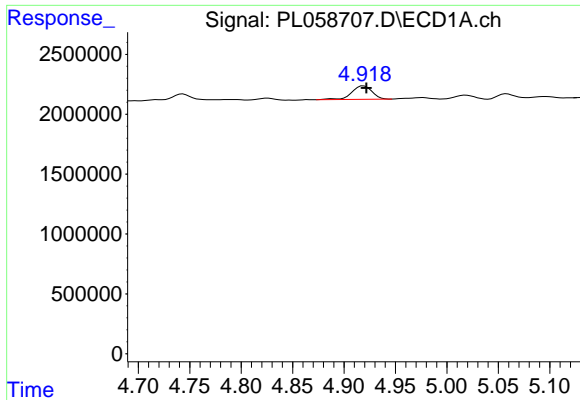
#22 Mirex
 R.T.: 8.306 min
 Delta R.T.: 0.014 min
 Response: 442423
 Conc: 0.28 ng/ml



#23 Chlordane-1
 R.T.: 4.413 min
 Delta R.T.: -0.003 min
 Response: 1264416
 Conc: 25.21 ng/ml

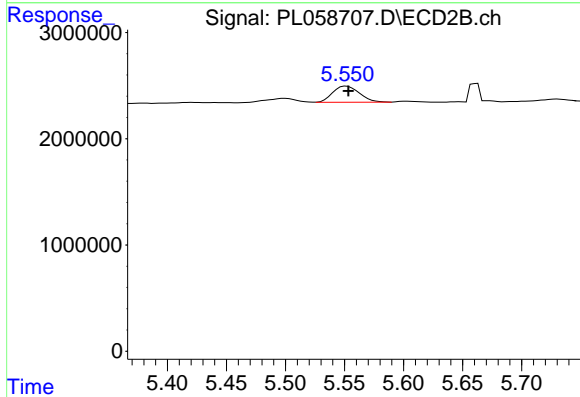


#23 Chlordane-1
 R.T.: 5.082 min
 Delta R.T.: -0.002 min
 Response: 2336602
 Conc: 29.20 ng/ml

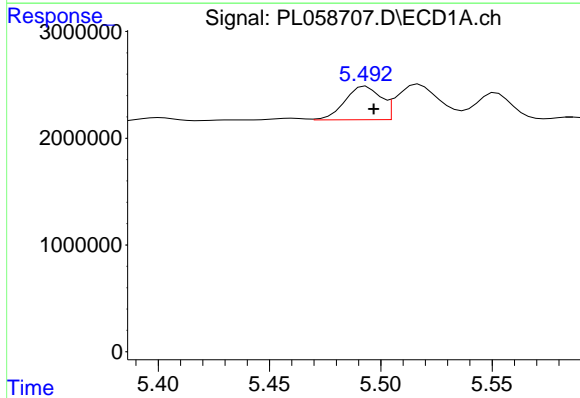


#24 Chlordane-2
 R.T.: 4.919 min
 Delta R.T.: -0.003 min
 Response: 1536058
 Conc: 28.28 ng/ml

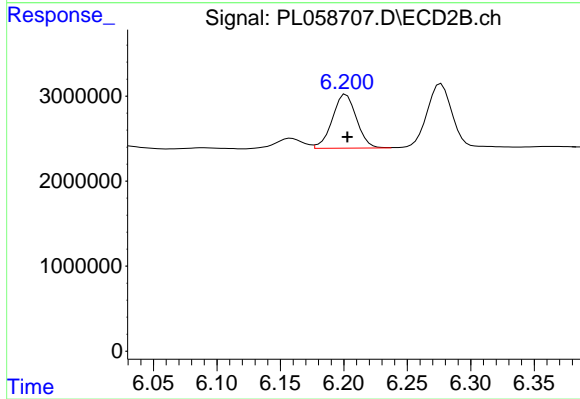
Instrument :
 ECD_L
 ClientSampleId :



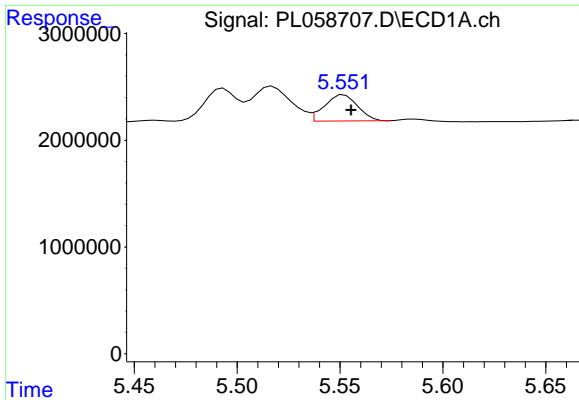
#24 Chlordane-2
 R.T.: 5.552 min
 Delta R.T.: -0.002 min
 Response: 2391914
 Conc: 27.99 ng/ml



#25 Chlordane-3
 R.T.: 5.493 min
 Delta R.T.: -0.004 min
 Response: 3481187
 Conc: 24.88 ng/ml

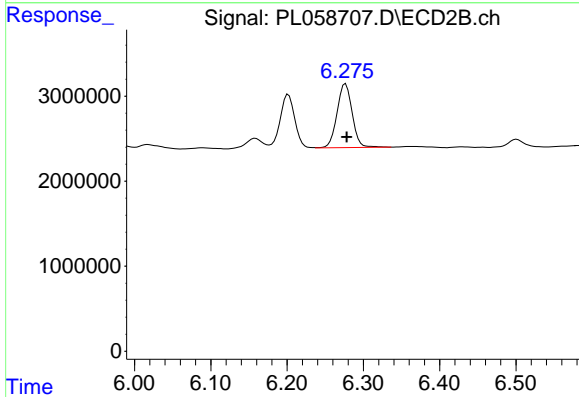


#25 Chlordane-3
 R.T.: 6.202 min
 Delta R.T.: -0.001 min
 Response: 8410216
 Conc: 27.77 ng/ml

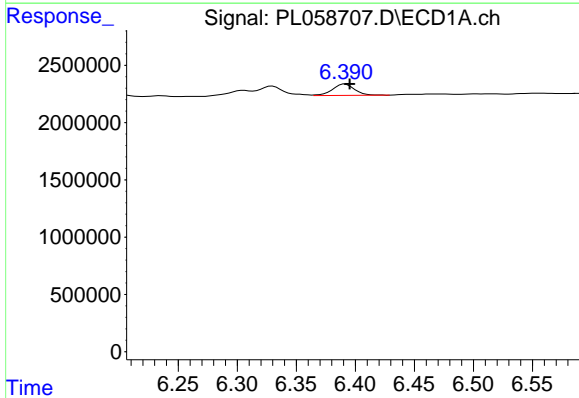


#26 Chlordane-4
R.T.: 5.552 min
Delta R.T.: -0.003 min
Response: 2759557
Conc: 24.04 ng/ml

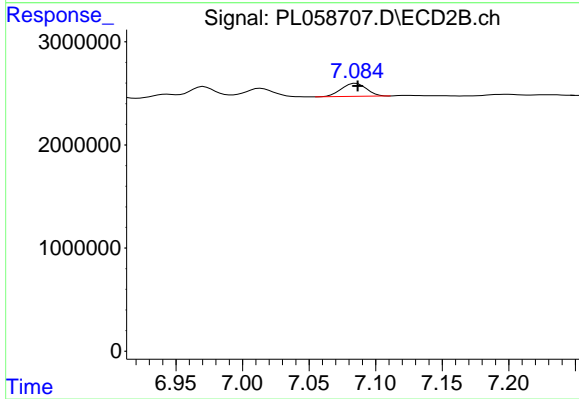
Instrument :
ECD_L
ClientSampleId :



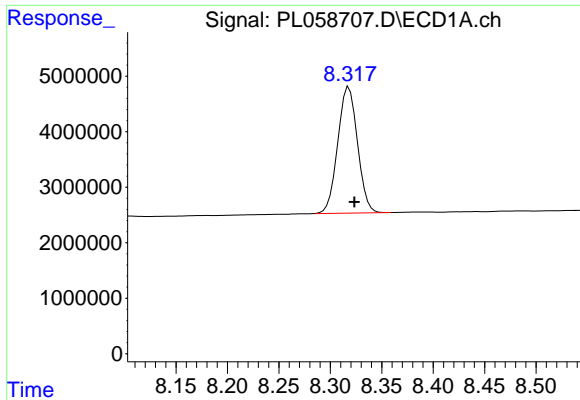
#26 Chlordane-4
R.T.: 6.277 min
Delta R.T.: -0.002 min
Response: 10325565
Conc: 28.33 ng/ml



#27 Chlordane-5
R.T.: 6.391 min
Delta R.T.: -0.004 min
Response: 1310374
Conc: 26.85 ng/ml



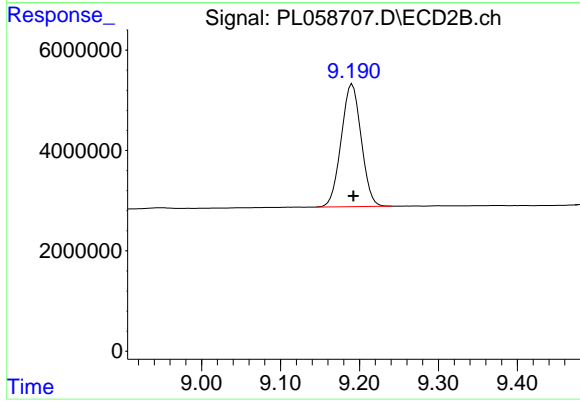
#27 Chlordane-5
R.T.: 7.085 min
Delta R.T.: -0.001 min
Response: 1665791
Conc: 26.68 ng/ml



#28 Decachlorobiphenyl

R.T.: 8.318 min
Delta R.T.: -0.005 min
Response: 30373837
Conc: 23.26 ng/ml

Instrument :
ECD_L
ClientSampleId :



#28 Decachlorobiphenyl

R.T.: 9.191 min
Delta R.T.: -0.001 min
Response: 42996636
Conc: 24.33 ng/ml