

Data Path : Z:\pestpcbsrv\HPCHEM1\ECD\_L\Data\PL051420\  
 Data File : PL058704.D  
 Signal(s) : Signal #1: ECD1A.ch Signal #2: ECD2B.ch  
 Acq On : 14 May 2020 10:30  
 Operator : AJ\MA  
 Sample : PB128802BL  
 Misc :  
 ALS Vial : 7 Sample Multiplier: 1

Instrument :  
 ECD\_L  
 ClientSampleId :  
 PB128802BL

Integration File signal 1: autoint1.e  
 Integration File signal 2: autoint2.e  
 Quant Time: May 14 23:49:56 2020  
 Quant Method : Z:\pestpcbsrv\HPCHEM1\ECD\_L\methods\PL051220.M  
 Quant Title : GC Extractables  
 QLast Update : Thu May 14 06:40:09 2020  
 Response via : Initial Calibration  
 Integrator: ChemStation

Volume Inj. : 1 µl  
 Signal #1 Phase : ZB-MR2 Signal #2 Phase: ZB-MR1  
 Signal #1 Info : 30M x 0.32mm x0.2 Signal #2 Info : 30M x 0.32mm x0.5µm

Compound	RT#1	RT#2	Resp#1	Resp#2	ng/ml	ng/ml
-----						
System Monitoring Compounds						
1) SA Tetrachlo...	3.534	4.078	31868361	44865947	19.398	20.727
28) SA Decachlor...	8.320	9.192	30239316	42375399	23.158	23.978

Target Compounds

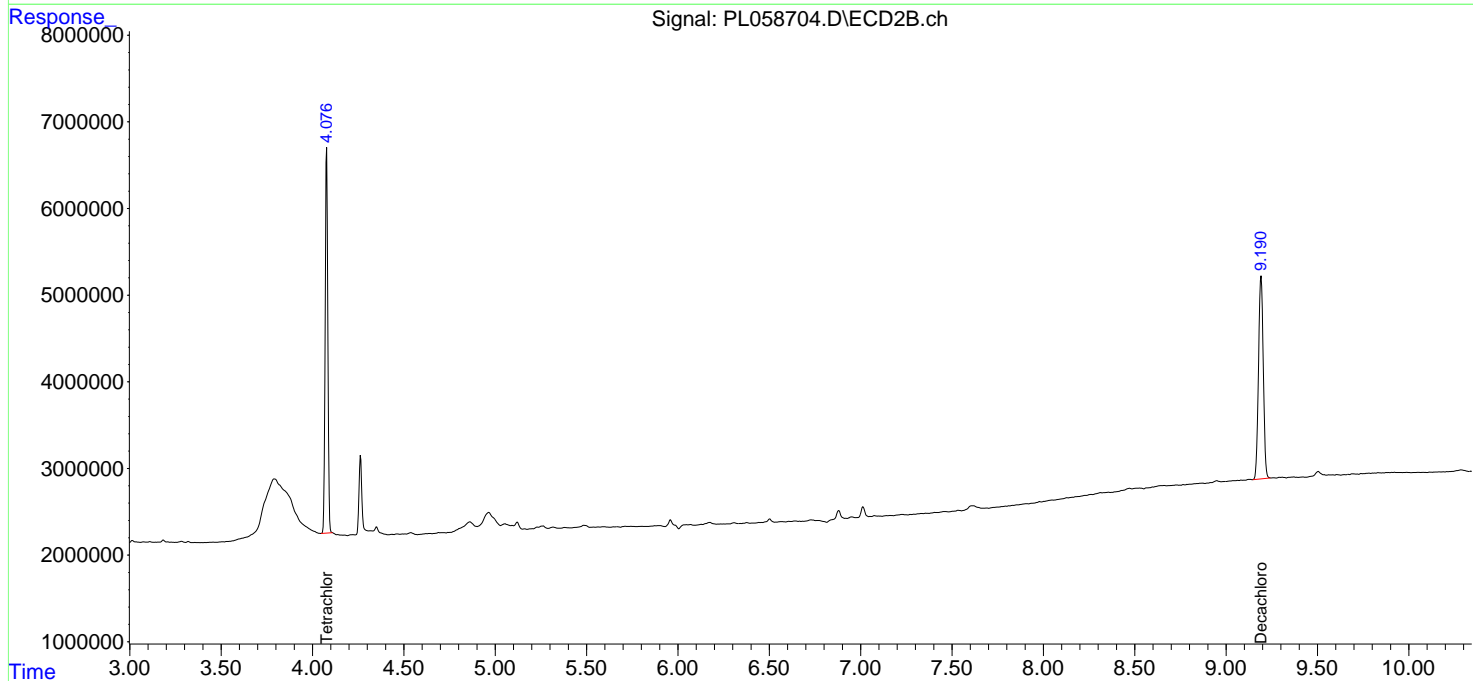
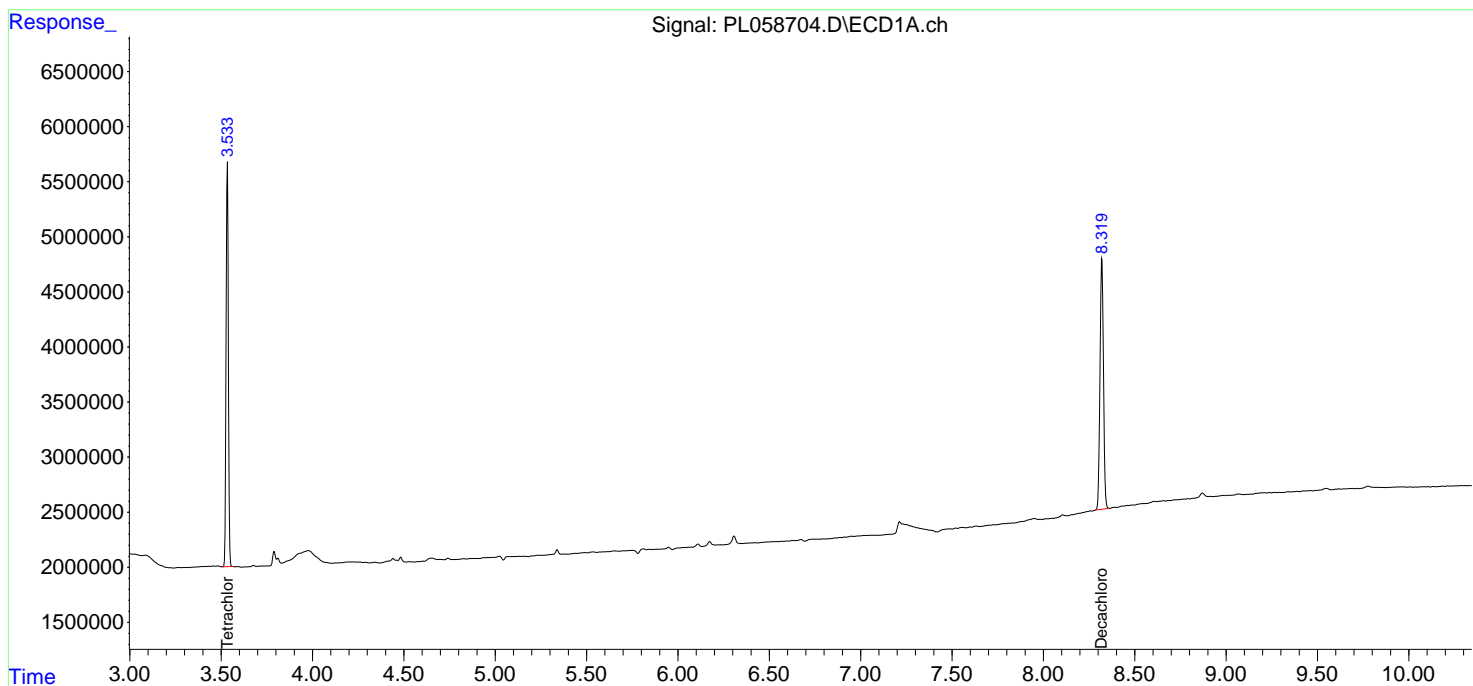
(f)=RT Delta > 1/2 Window (#)=Amounts differ by > 25% (m)=manual int.

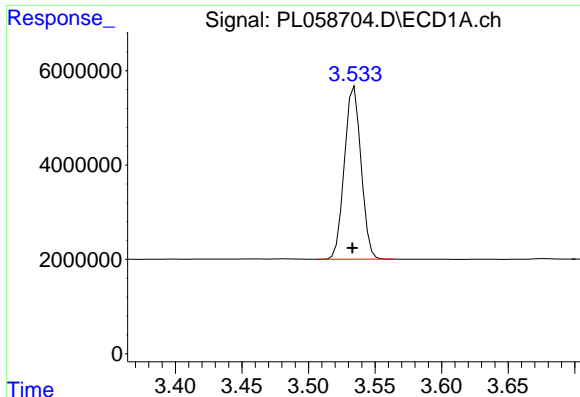
Data Path : Z:\pestpcbsrv\HPCHEM1\ECD\_L\Data\PL051420\  
 Data File : PL058704.D  
 Signal(s) : Signal #1: ECD1A.ch Signal #2: ECD2B.ch  
 Acq On : 14 May 2020 10:30  
 Operator : AJ\MA  
 Sample : PB128802BL  
 Misc :  
 ALS Vial : 7 Sample Multiplier: 1

Instrument :  
 ECD\_L  
 ClientSampleID :  
 PB128802BL

Integration File signal 1: autoint1.e  
 Integration File signal 2: autoint2.e  
 Quant Time: May 14 23:49:56 2020  
 Quant Method : Z:\pestpcbsrv\HPCHEM1\ECD\_L\methods\PL051220.M  
 Quant Title : GC Extractables  
 QLast Update : Thu May 14 06:40:09 2020  
 Response via : Initial Calibration  
 Integrator: ChemStation

Volume Inj. : 1 µl  
 Signal #1 Phase : ZB-MR2 Signal #2 Phase: ZB-MR1  
 Signal #1 Info : 30M x 0.32mm x0.2 Signal #2 Info : 30M x 0.32mm x0.5µm

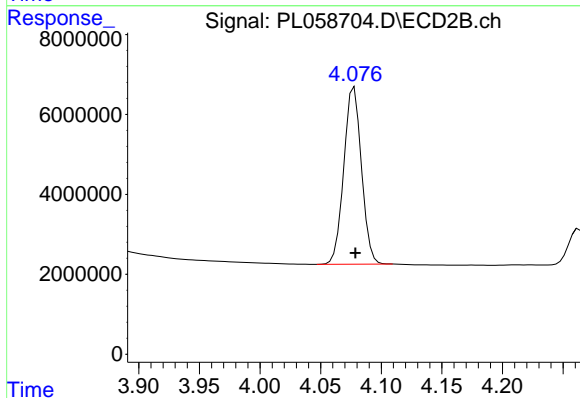




#1 Tetrachloro-m-xylene

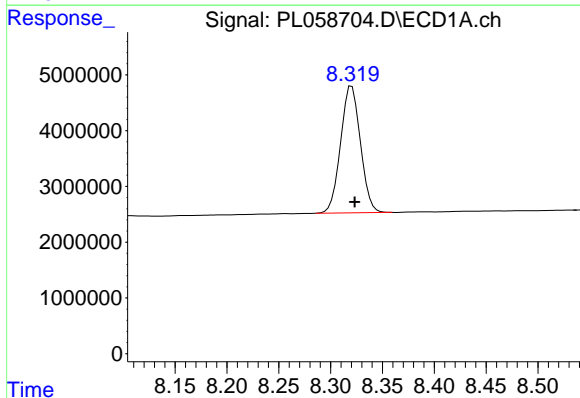
R.T.: 3.534 min  
 Delta R.T.: 0.001 min  
 Response: 31868361  
 Conc: 19.40 ng/ml

Instrument :  
 ECD\_L  
 ClientSampleId :  
 PB128802BL



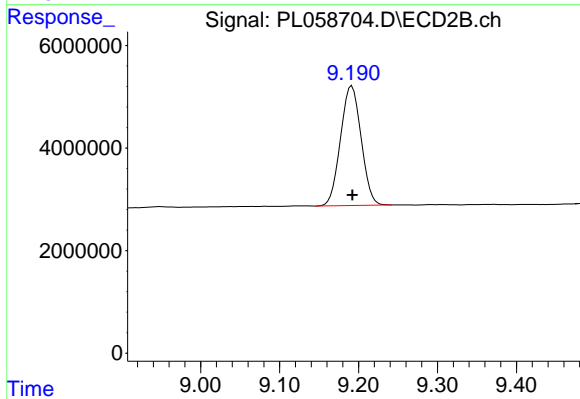
#1 Tetrachloro-m-xylene

R.T.: 4.078 min  
 Delta R.T.: 0.000 min  
 Response: 44865947  
 Conc: 20.73 ng/ml



#28 Decachlorobiphenyl

R.T.: 8.320 min  
 Delta R.T.: -0.003 min  
 Response: 30239316  
 Conc: 23.16 ng/ml



#28 Decachlorobiphenyl

R.T.: 9.192 min  
 Delta R.T.: 0.000 min  
 Response: 42375399  
 Conc: 23.98 ng/ml