

Data Path : Z:\pestpcbsrv\HPCHEM1\ECD\_L\Data\PL051425\  
 Data File : PL095654.D  
 Signal(s) : Signal #1: ECD1A.ch Signal #2: ECD2B.ch  
 Acq On : 14 May 2025 12:00  
 Operator : AR\AJ  
 Sample : PSTDCCC050  
 Misc :  
 ALS Vial : 4 Sample Multiplier: 1

Instrument :  
 ECD\_L  
 ClientSampleId :  
 I.BLK

Integration File signal 1: autoint1.e  
 Integration File signal 2: autoint2.e  
 Quant Time: May 15 01:21:58 2025  
 Quant Method : Z:\pestpcbsrv\HPCHEM1\ECD\_L\methods\PL051325.M  
 Quant Title : GC Extractables  
 QLast Update : Tue May 13 14:38:57 2025  
 Response via : Initial Calibration  
 Integrator: ChemStation

Volume Inj. : 1 µl  
 Signal #1 Phase : ZB-MR2 Signal #2 Phase: ZB-MR2  
 Signal #1 Info : 30M x 0.32mm x0.5 Signal #2 Info : 30M x 0.32mm x0.25µm

	Compound	RT#1	RT#2	Resp#1	Resp#2	ng/ml	ng/ml
-----							
System Monitoring Compounds							
1)	SA Tetrachlo...	3.592	2.910	195.4E6	212.9E6	47.831	45.461
28)	SA Decachlor...	9.114	8.085	171.1E6	195.1E6	50.431	47.296
Target Compounds							
2)	A alpha-BHC	4.043	3.420	290.2E6	329.2E6	49.604	46.031
3)	MA gamma-BHC...	4.374	3.753	275.1E6	310.7E6	49.425	46.010
4)	MA Heptachlor	4.971	4.106	268.8E6	296.4E6	49.351	45.440
5)	MB Aldrin	5.313	4.391	286.5E6	294.6E6	49.878	46.189
6)	B beta-BHC	4.559	4.047	119.2E6	135.7E6	48.656	44.963
7)	B delta-BHC	4.808	4.283	265.9E6	314.0E6	48.939	46.135
8)	Heptachlo...	5.734	4.894	251.6E6	267.9E6	48.554	46.360
9)	A Endosulfan I	6.117	5.267	248.4E6	253.9E6	50.734	49.092
10)	B gamma-Chl...	5.988	5.147	269.1E6	276.3E6	50.242	46.395
11)	B alpha-Chl...	6.069	5.211	264.3E6	270.4E6	50.842	45.808
12)	B 4,4'-DDE	6.238	5.397	264.8E6	282.6E6	51.727	47.347
13)	MA Dieldrin	6.390	5.532	249.9E6	286.2E6	50.704	46.515
14)	MA Endrin	6.617	5.807	189.2E6	241.1E6	49.394	45.252
15)	B Endosulfa...	6.829	6.097	208.1E6	251.8E6	49.928	45.987
16)	A 4,4'-DDD	6.747	5.948	194.9E6	243.1E6	50.165	47.267
17)	MA 4,4'-DDT	7.062	6.202	185.4E6	233.3E6	51.545	46.490
18)	B Endrin al...	6.958	6.275	150.6E6	182.0E6	51.306	47.545
19)	B Endosulfa...	7.192	6.498	186.7E6	231.0E6	50.876	46.458
20)	A Methoxychlor	7.533	6.772	85498002	124.8E6	50.709	46.135
21)	B Endrin ke...	7.673	7.004	192.8E6	281.7E6	51.474	47.940
22)	Mirex	8.155	7.199	153.0E6	201.6E6	50.257	46.760
25)	Chlordane-3	5.988	5.147	269.1E6	276.3E6	277.785	357.051 #
26)	Chlordane-4	6.069	5.211	264.3E6	270.4E6	227.664	417.661 #
27)	Chlordane-5	0.000	6.097	0	251.8E6	N.D.	876.817 #

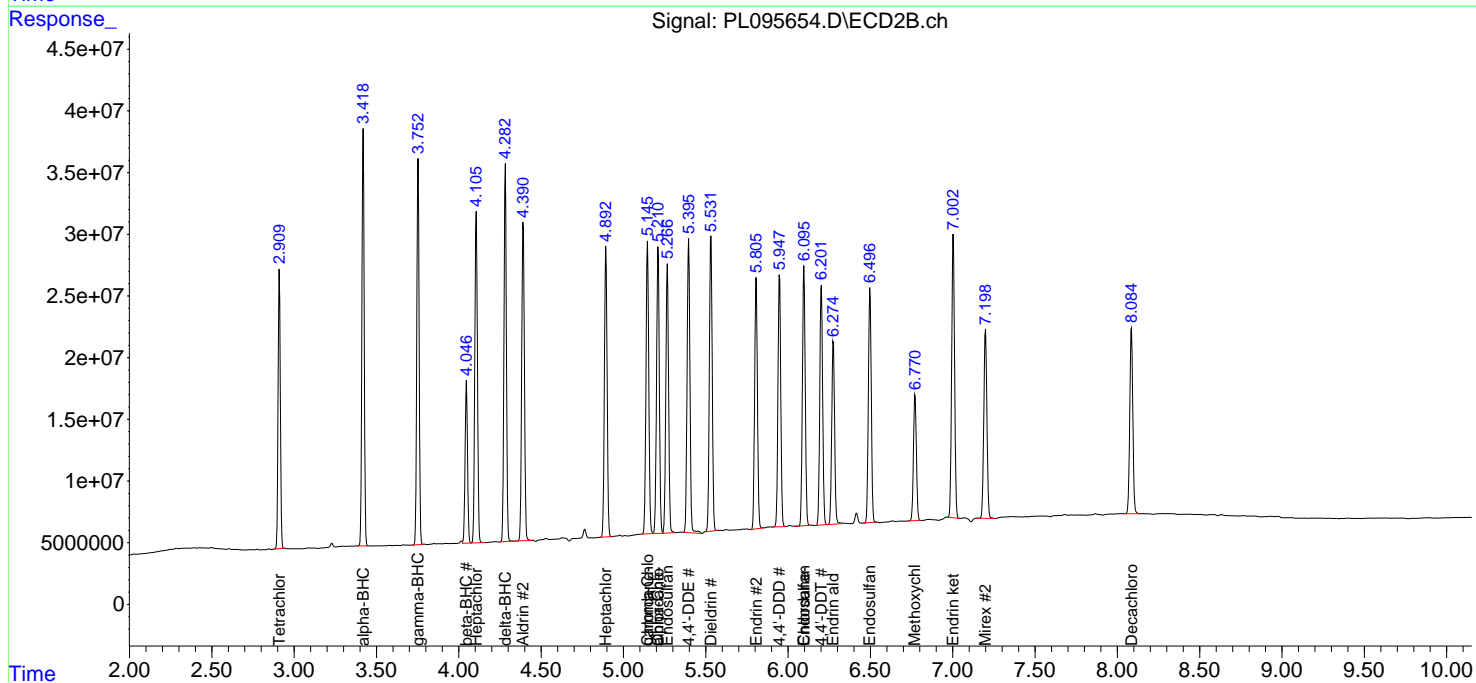
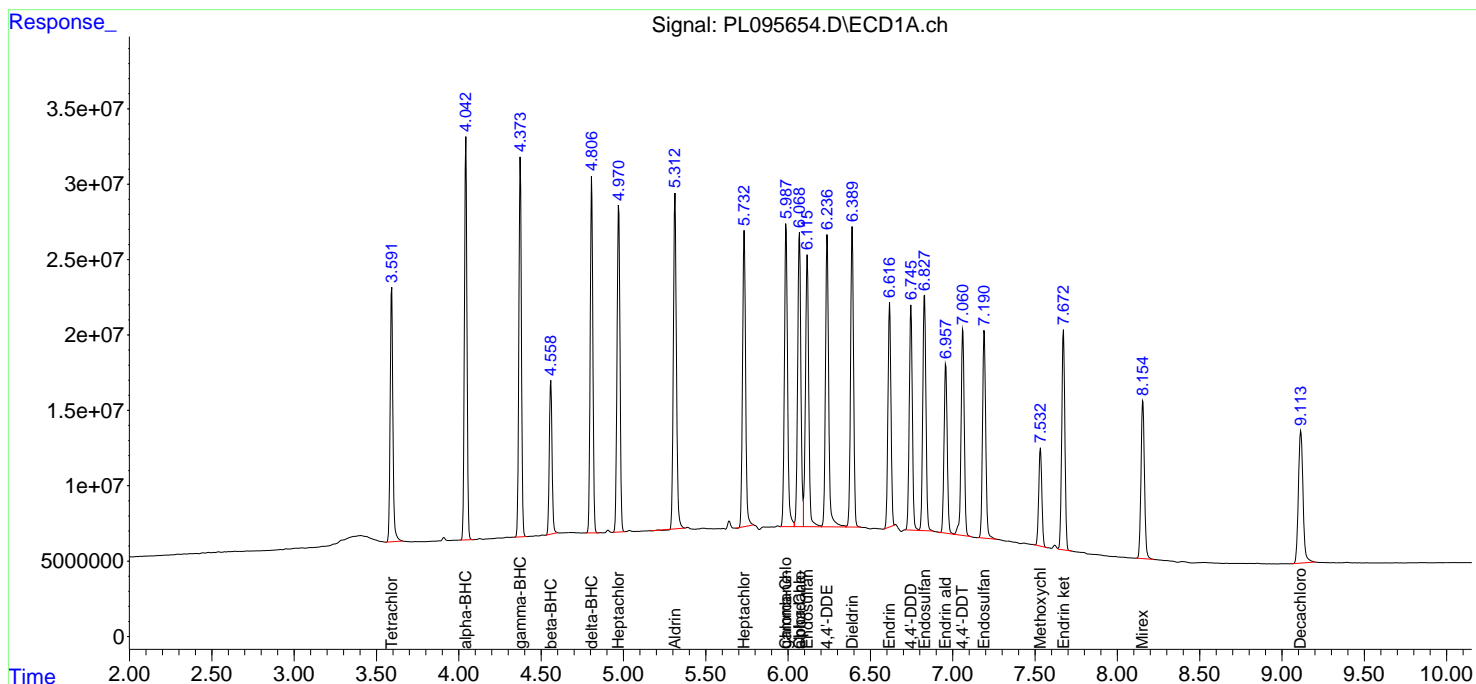
(f)=RT Delta > 1/2 Window (#)=Amounts differ by > 25% (m)=manual int.

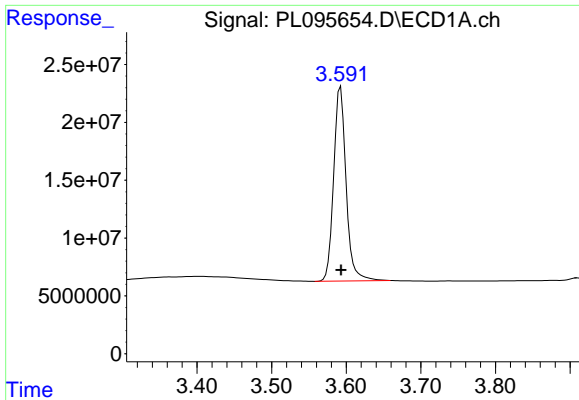
Data Path : Z:\pestpcbsrv\HPCHEM1\ECD\_L\Data\PL051425\  
 Data File : PL095654.D  
 Signal(s) : Signal #1: ECD1A.ch Signal #2: ECD2B.ch  
 Acq On : 14 May 2025 12:00  
 Operator : AR\AJ  
 Sample : PSTDCCC050  
 Misc :  
 ALS Vial : 4 Sample Multiplier: 1

Instrument :  
 ECD\_L  
 ClientSampleId :  
 I.BLK

Integration File signal 1: autoint1.e  
 Integration File signal 2: autoint2.e  
 Quant Time: May 15 01:21:58 2025  
 Quant Method : Z:\pestpcbsrv\HPCHEM1\ECD\_L\methods\PL051325.M  
 Quant Title : GC Extractables  
 QLast Update : Tue May 13 14:38:57 2025  
 Response via : Initial Calibration  
 Integrator: ChemStation

Volume Inj. : 1 µl  
 Signal #1 Phase : ZB-MR1 Signal #2 Phase: ZB-MR2  
 Signal #1 Info : 30M x 0.32mm x0.5 Signal #2 Info : 30M x 0.32mm x0.25µm

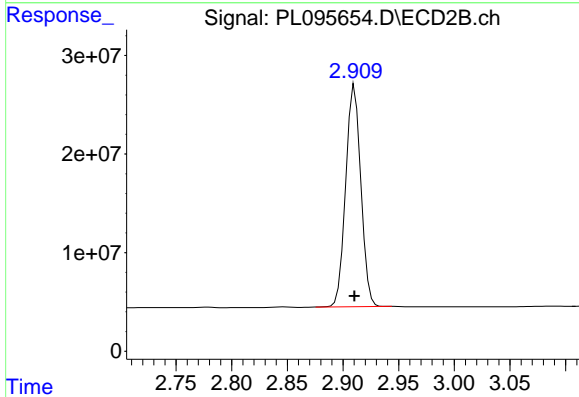




#1 Tetrachloro-m-xylene

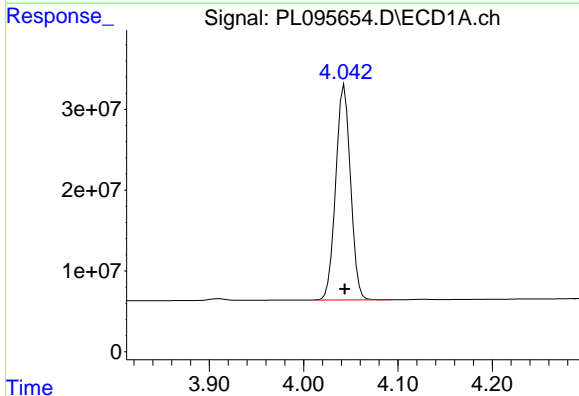
R.T.: 3.592 min  
Delta R.T.: 0.000 min  
Response: 195439515  
Conc: 47.83 ng/ml

Instrument :  
ECD\_L  
ClientSampleId :  
I.BLK



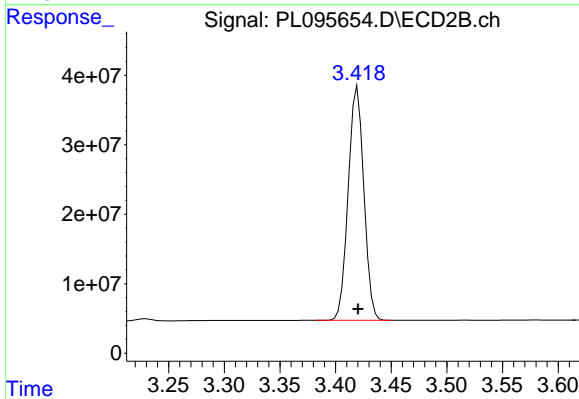
#1 Tetrachloro-m-xylene

R.T.: 2.910 min  
Delta R.T.: 0.000 min  
Response: 212943290  
Conc: 45.46 ng/ml



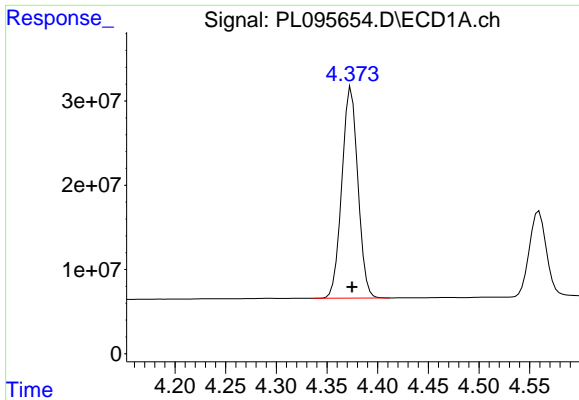
#2 alpha-BHC

R.T.: 4.043 min  
Delta R.T.: 0.000 min  
Response: 290238248  
Conc: 49.60 ng/ml



#2 alpha-BHC

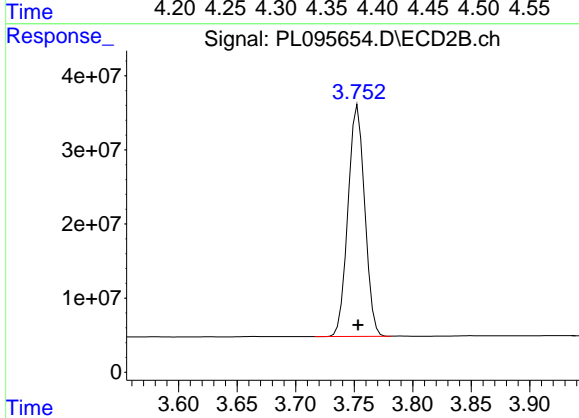
R.T.: 3.420 min  
Delta R.T.: 0.000 min  
Response: 329188165  
Conc: 46.03 ng/ml



#3 gamma-BHC (Lindane)

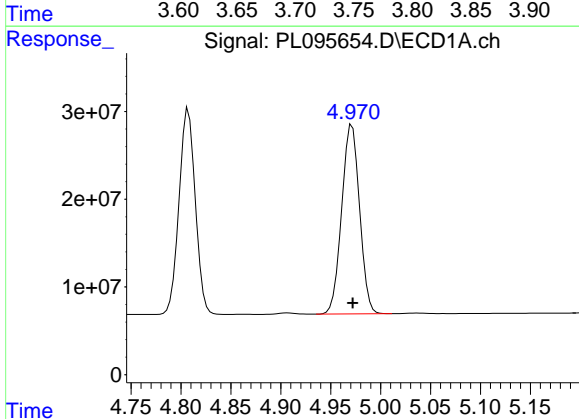
R.T.: 4.374 min  
 Delta R.T.: 0.000 min  
 Response: 275102524  
 Conc: 49.42 ng/ml

Instrument :  
 ECD\_L  
 ClientSampleId :  
 I.BLK



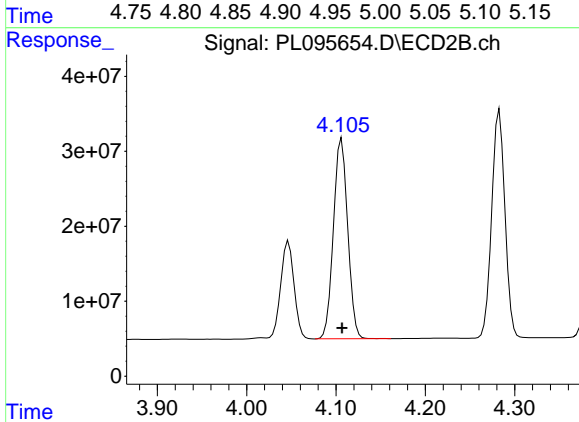
#3 gamma-BHC (Lindane)

R.T.: 3.753 min  
 Delta R.T.: 0.000 min  
 Response: 310689060  
 Conc: 46.01 ng/ml



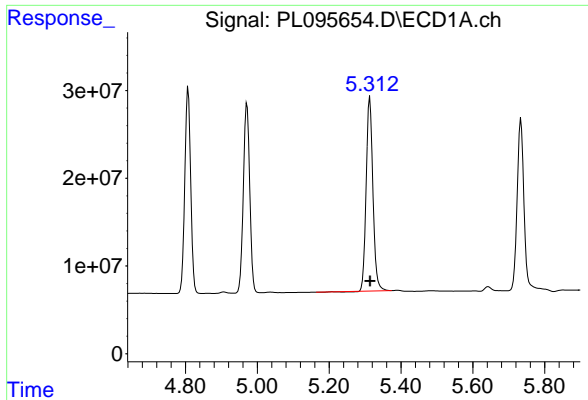
#4 Heptachlor

R.T.: 4.971 min  
 Delta R.T.: 0.000 min  
 Response: 268757402  
 Conc: 49.35 ng/ml



#4 Heptachlor

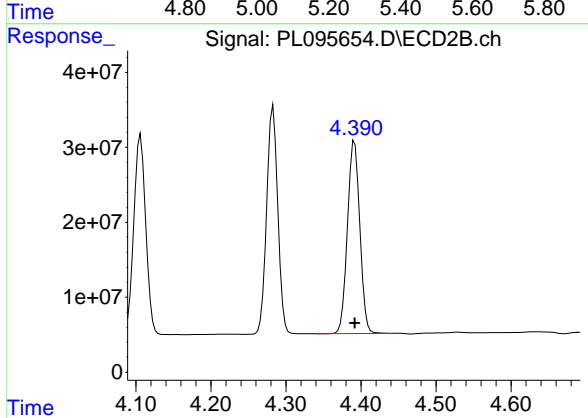
R.T.: 4.106 min  
 Delta R.T.: 0.000 min  
 Response: 296425896  
 Conc: 45.44 ng/ml



#5 Aldrin

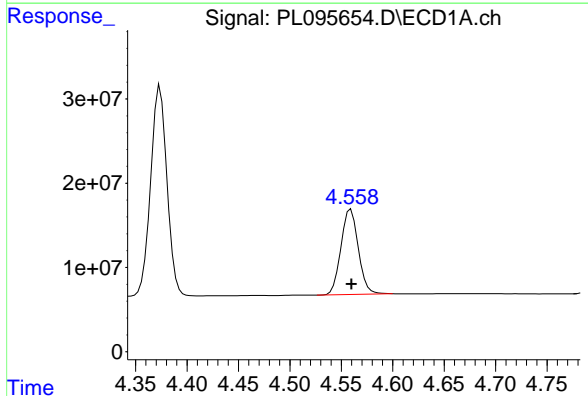
R.T.: 5.313 min  
 Delta R.T.: 0.000 min  
 Response: 286483143  
 Conc: 49.88 ng/ml

Instrument :  
 ECD\_L  
 ClientSampleId :  
 I.BLK



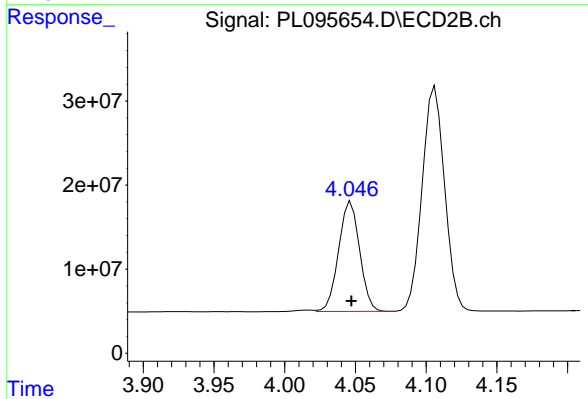
#5 Aldrin

R.T.: 4.391 min  
 Delta R.T.: 0.000 min  
 Response: 294589927  
 Conc: 46.19 ng/ml



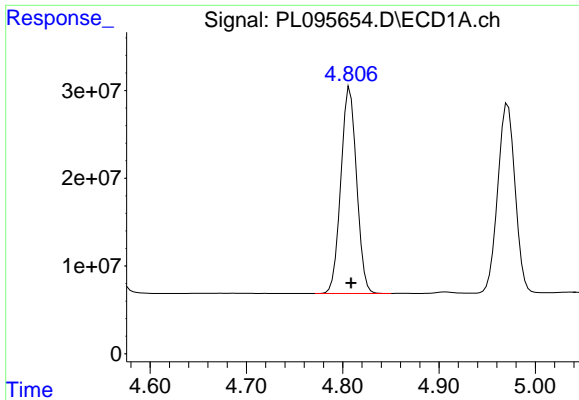
#6 beta-BHC

R.T.: 4.559 min  
 Delta R.T.: 0.000 min  
 Response: 119162506  
 Conc: 48.66 ng/ml



#6 beta-BHC

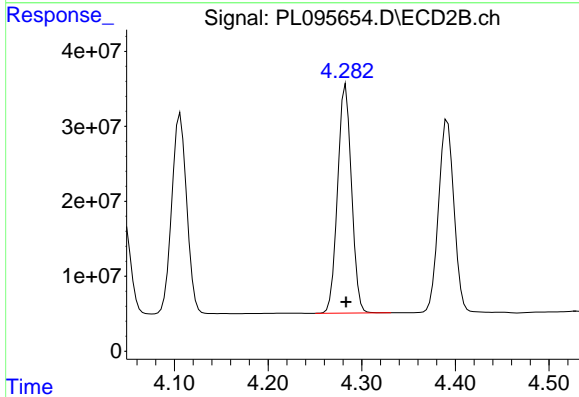
R.T.: 4.047 min  
 Delta R.T.: 0.000 min  
 Response: 135655740  
 Conc: 44.96 ng/ml



#7 delta-BHC

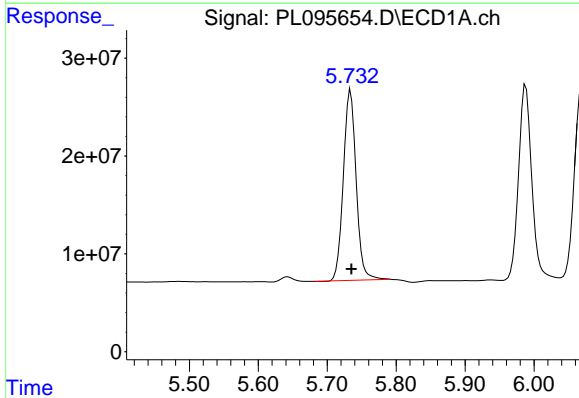
R.T.: 4.808 min  
 Delta R.T.: -0.001 min  
 Response: 265873830  
 Conc: 48.94 ng/ml

Instrument :  
 ECD\_L  
 ClientSampleId :  
 I.BLK



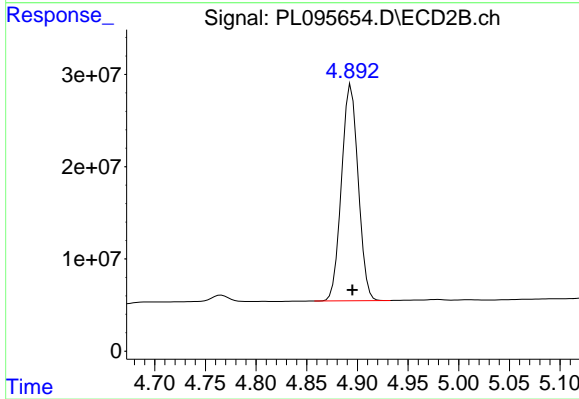
#7 delta-BHC

R.T.: 4.283 min  
 Delta R.T.: 0.000 min  
 Response: 314028139  
 Conc: 46.13 ng/ml



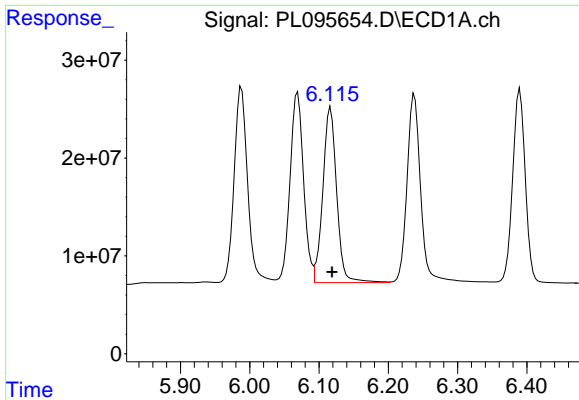
#8 Heptachlor epoxide

R.T.: 5.734 min  
 Delta R.T.: -0.001 min  
 Response: 251604877  
 Conc: 48.55 ng/ml



#8 Heptachlor epoxide

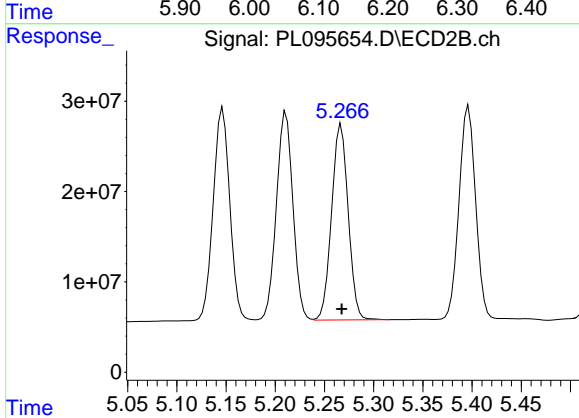
R.T.: 4.894 min  
 Delta R.T.: -0.001 min  
 Response: 267935181  
 Conc: 46.36 ng/ml



#9 Endosulfan I

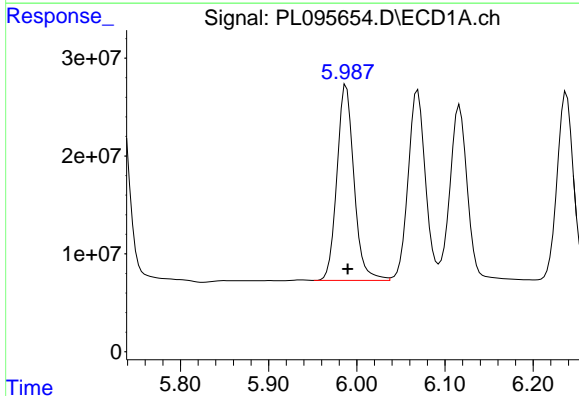
R.T.: 6.117 min  
 Delta R.T.: -0.002 min  
 Response: 248366091  
 Conc: 50.73 ng/ml

Instrument :  
 ECD\_L  
 ClientSampleId :  
 I.BLK



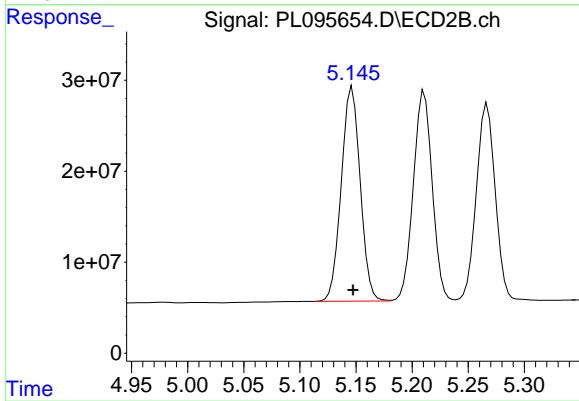
#9 Endosulfan I

R.T.: 5.267 min  
 Delta R.T.: 0.000 min  
 Response: 253905082  
 Conc: 49.09 ng/ml



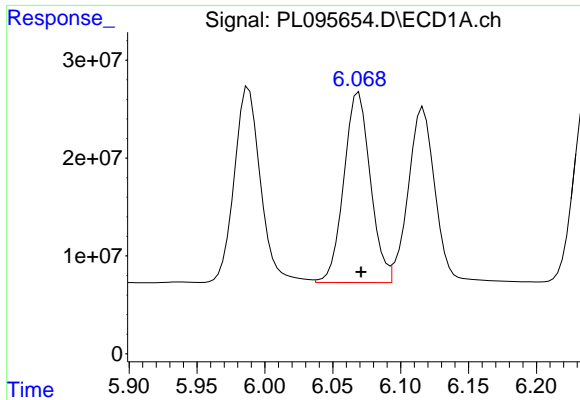
#10 gamma-Chlordane

R.T.: 5.988 min  
 Delta R.T.: -0.002 min  
 Response: 269056560  
 Conc: 50.24 ng/ml



#10 gamma-Chlordane

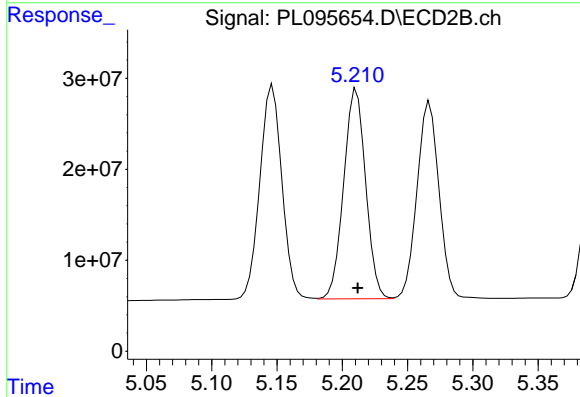
R.T.: 5.147 min  
 Delta R.T.: 0.000 min  
 Response: 276345000  
 Conc: 46.40 ng/ml



#11 alpha-Chlordane

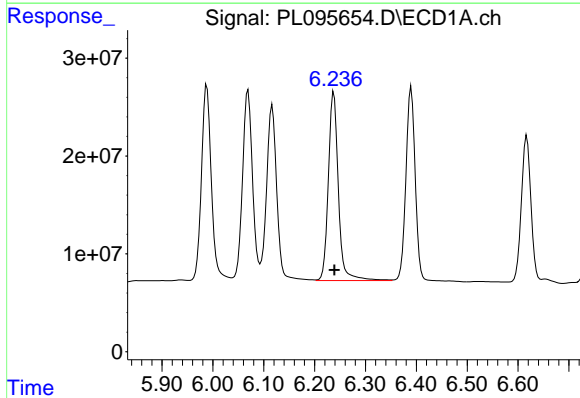
R.T.: 6.069 min  
 Delta R.T.: -0.001 min  
 Response: 264265655  
 Conc: 50.84 ng/ml

Instrument :  
 ECD\_L  
 ClientSampleId :  
 I.BLK



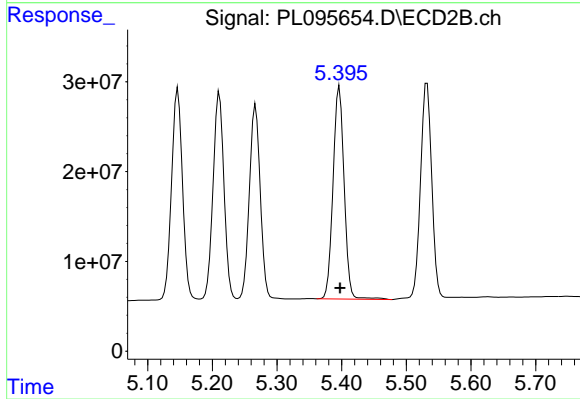
#11 alpha-Chlordane

R.T.: 5.211 min  
 Delta R.T.: 0.000 min  
 Response: 270369498  
 Conc: 45.81 ng/ml



#12 4,4'-DDE

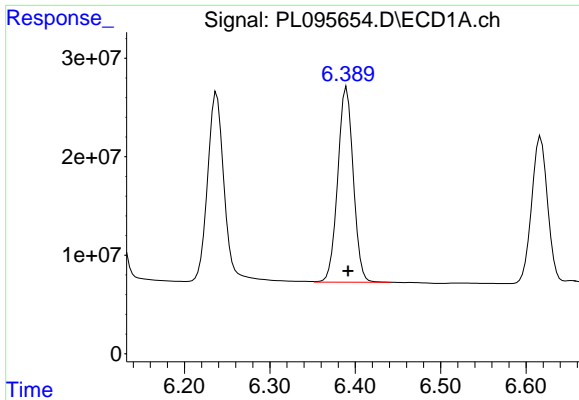
R.T.: 6.238 min  
 Delta R.T.: 0.000 min  
 Response: 264780737  
 Conc: 51.73 ng/ml



#12 4,4'-DDE

R.T.: 5.397 min  
 Delta R.T.: -0.001 min  
 Response: 282558508  
 Conc: 47.35 ng/ml

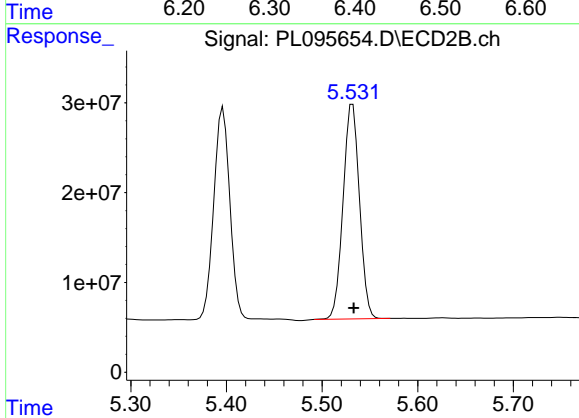




#13 Dieldrin

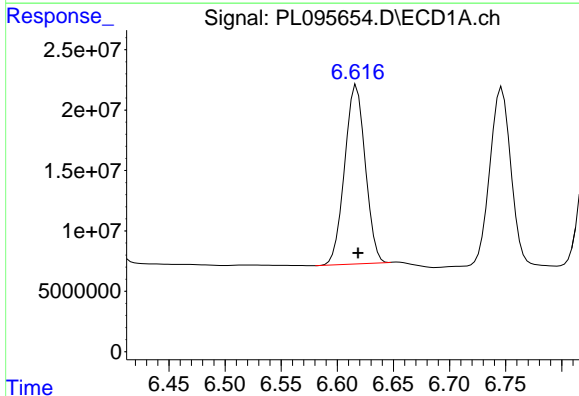
R.T.: 6.390 min  
 Delta R.T.: -0.001 min  
 Response: 249874853  
 Conc: 50.70 ng/ml

Instrument :  
 ECD\_L  
 ClientSampleId :  
 I.BLK



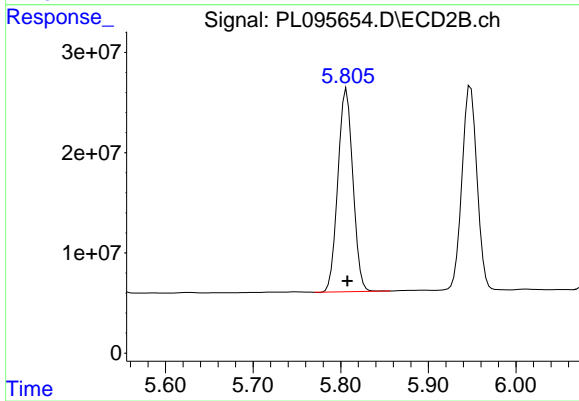
#13 Dieldrin

R.T.: 5.532 min  
 Delta R.T.: -0.001 min  
 Response: 286192417  
 Conc: 46.51 ng/ml



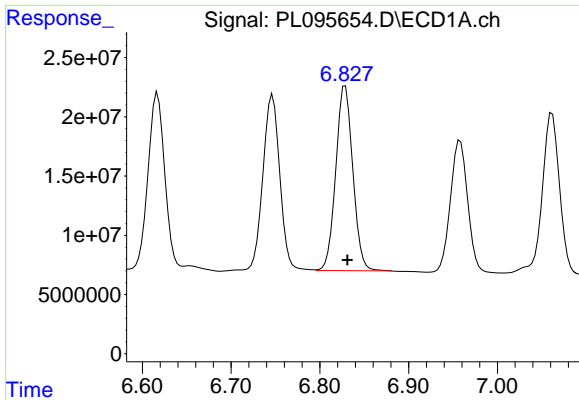
#14 Endrin

R.T.: 6.617 min  
 Delta R.T.: -0.002 min  
 Response: 189207553  
 Conc: 49.39 ng/ml



#14 Endrin

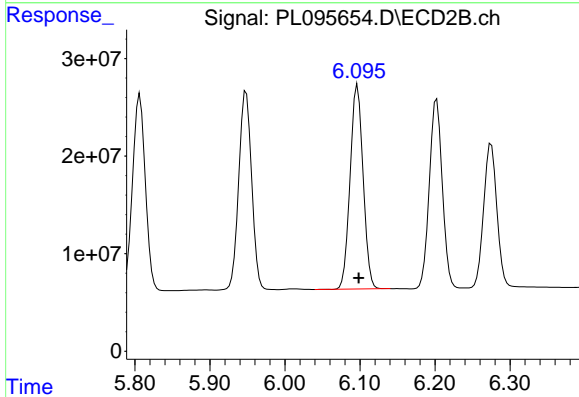
R.T.: 5.807 min  
 Delta R.T.: -0.001 min  
 Response: 241089230  
 Conc: 45.25 ng/ml



#15 Endosulfan II

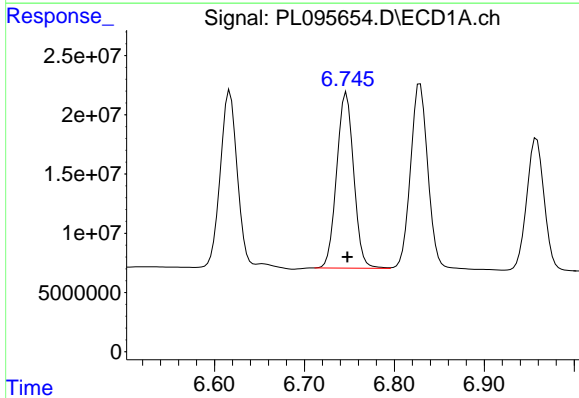
R.T.: 6.829 min  
Delta R.T.: -0.002 min  
Response: 208104675  
Conc: 49.93 ng/ml

Instrument :  
ECD\_L  
ClientSampleId :  
I.BLK



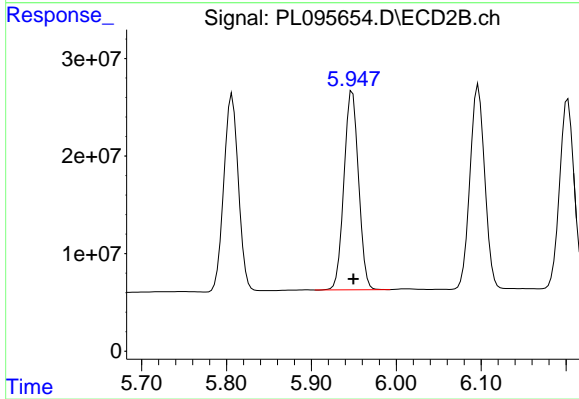
#15 Endosulfan II

R.T.: 6.097 min  
Delta R.T.: -0.002 min  
Response: 251845275  
Conc: 45.99 ng/ml



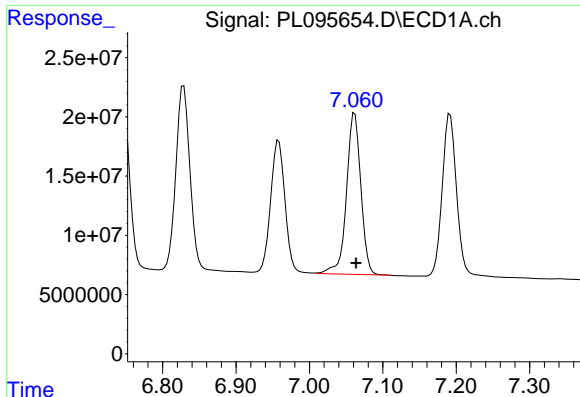
#16 4,4'-DDD

R.T.: 6.747 min  
Delta R.T.: 0.000 min  
Response: 194923819  
Conc: 50.17 ng/ml



#16 4,4'-DDD

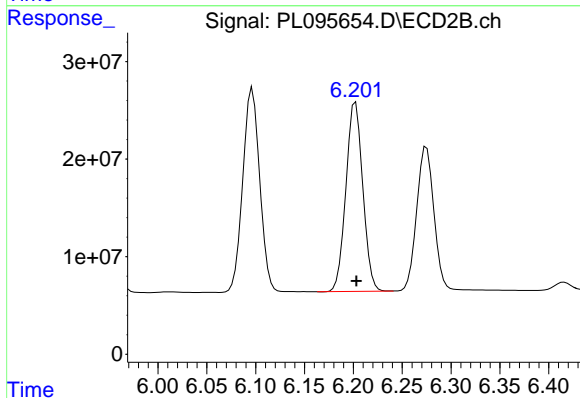
R.T.: 5.948 min  
Delta R.T.: -0.001 min  
Response: 243079732  
Conc: 47.27 ng/ml



#17 4,4'-DDT

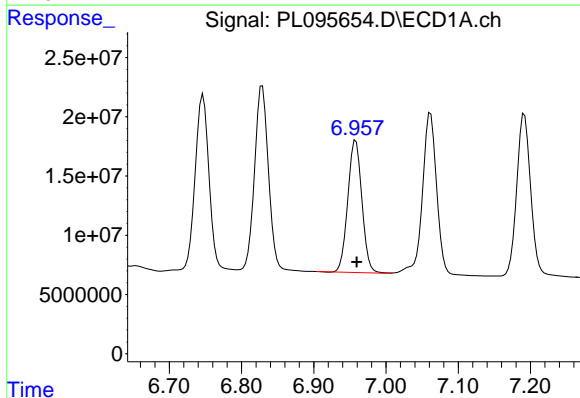
R.T.: 7.062 min  
 Delta R.T.: -0.002 min  
 Response: 185449670  
 Conc: 51.55 ng/ml

Instrument :  
 ECD\_L  
 ClientSampleId :  
 I.BLK



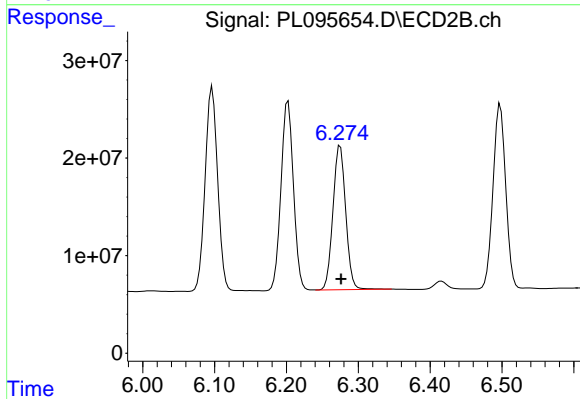
#17 4,4'-DDT

R.T.: 6.202 min  
 Delta R.T.: 0.000 min  
 Response: 233326078  
 Conc: 46.49 ng/ml



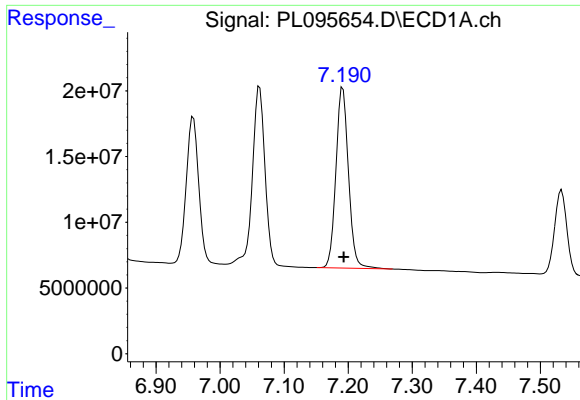
#18 Endrin aldehyde

R.T.: 6.958 min  
 Delta R.T.: -0.001 min  
 Response: 150629082  
 Conc: 51.31 ng/ml



#18 Endrin aldehyde

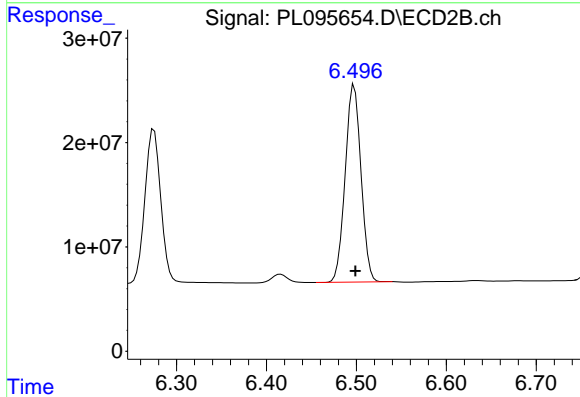
R.T.: 6.275 min  
 Delta R.T.: -0.001 min  
 Response: 182040924  
 Conc: 47.55 ng/ml



#19 Endosulfan Sulfate

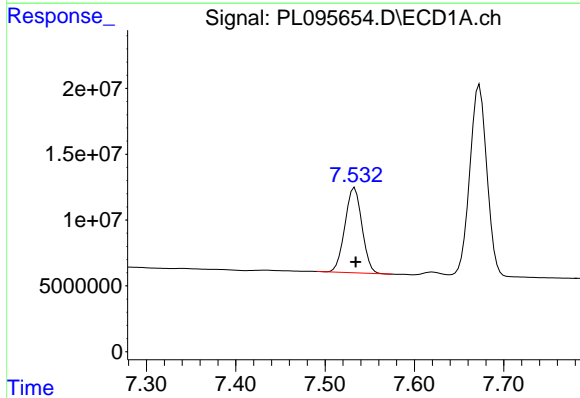
R.T.: 7.192 min  
 Delta R.T.: -0.002 min  
 Response: 186733539  
 Conc: 50.88 ng/ml

Instrument :  
 ECD\_L  
 ClientSampleId :  
 I.BLK



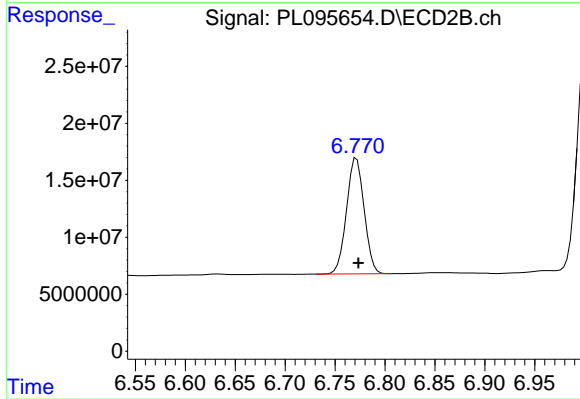
#19 Endosulfan Sulfate

R.T.: 6.498 min  
 Delta R.T.: -0.001 min  
 Response: 230979438  
 Conc: 46.46 ng/ml



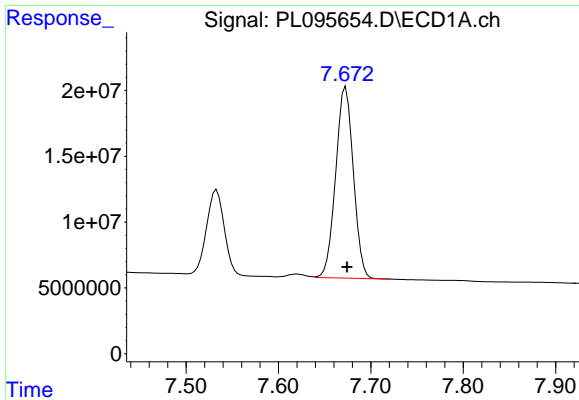
#20 Methoxychlor

R.T.: 7.533 min  
 Delta R.T.: -0.001 min  
 Response: 85498002  
 Conc: 50.71 ng/ml



#20 Methoxychlor

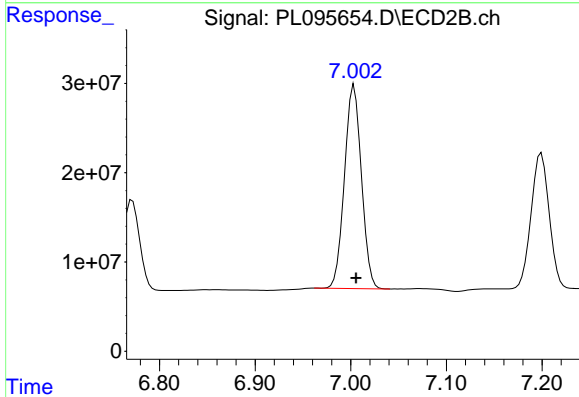
R.T.: 6.772 min  
 Delta R.T.: -0.002 min  
 Response: 124832711  
 Conc: 46.13 ng/ml



#21 Endrin ketone

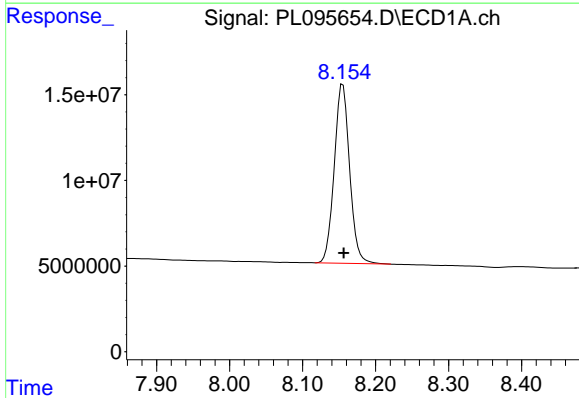
R.T.: 7.673 min  
 Delta R.T.: -0.001 min  
 Response: 192839664  
 Conc: 51.47 ng/ml

Instrument :  
 ECD\_L  
 ClientSampleId :  
 I.BLK



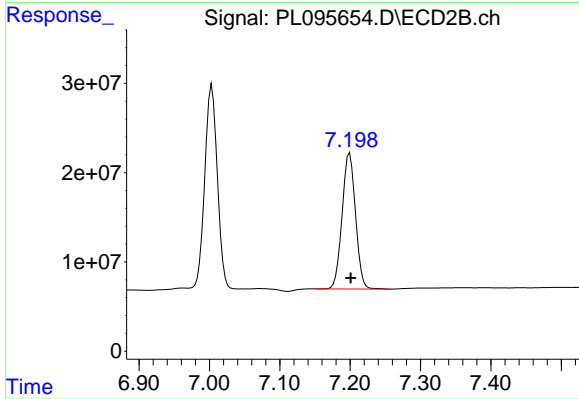
#21 Endrin ketone

R.T.: 7.004 min  
 Delta R.T.: -0.002 min  
 Response: 281725343  
 Conc: 47.94 ng/ml



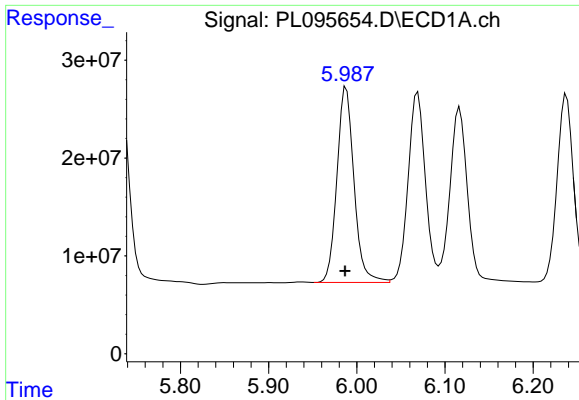
#22 Mirex

R.T.: 8.155 min  
 Delta R.T.: -0.001 min  
 Response: 153013249  
 Conc: 50.26 ng/ml



#22 Mirex

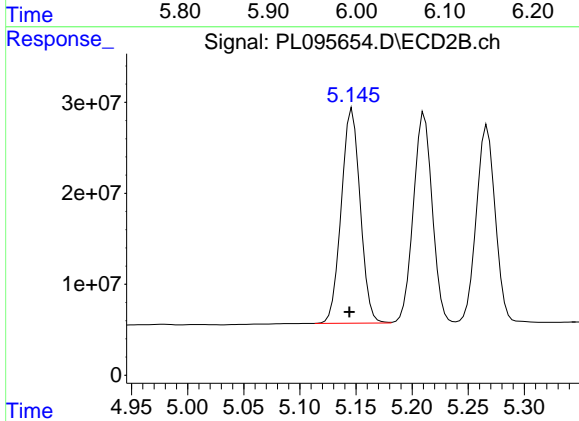
R.T.: 7.199 min  
 Delta R.T.: -0.002 min  
 Response: 201618461  
 Conc: 46.76 ng/ml



#25 Chlordane-3

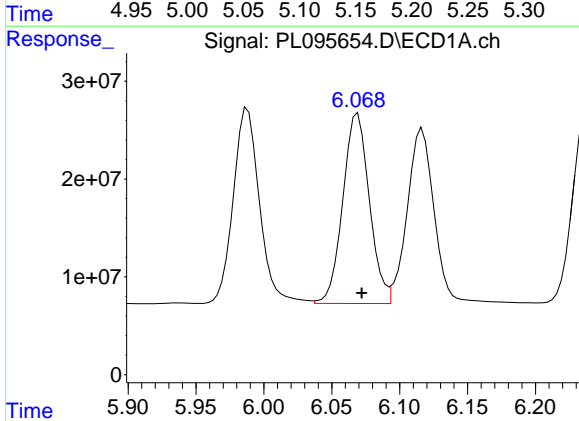
R.T.: 5.988 min  
 Delta R.T.: 0.001 min  
 Response: 269056560  
 Conc: 277.79 ng/ml

Instrument :  
 ECD\_L  
 ClientSampleId :  
 I.BLK



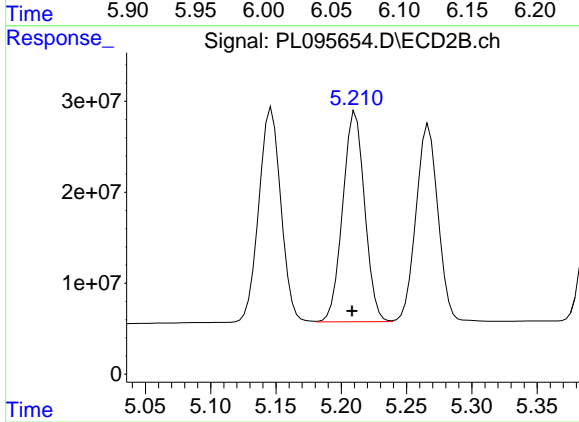
#25 Chlordane-3

R.T.: 5.147 min  
 Delta R.T.: 0.002 min  
 Response: 276345000  
 Conc: 357.05 ng/ml



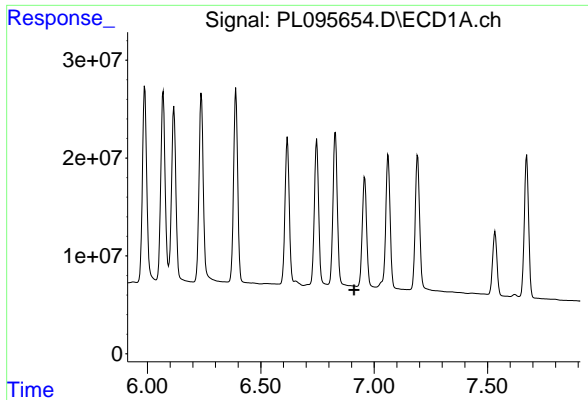
#26 Chlordane-4

R.T.: 6.069 min  
 Delta R.T.: -0.003 min  
 Response: 264265655  
 Conc: 227.66 ng/ml



#26 Chlordane-4

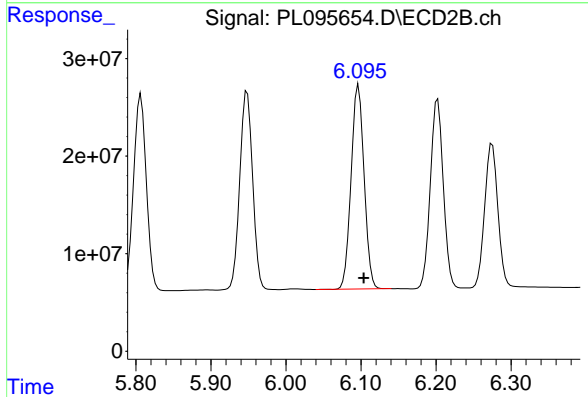
R.T.: 5.211 min  
 Delta R.T.: 0.003 min  
 Response: 270369498  
 Conc: 417.66 ng/ml



#27 Chlordane-5

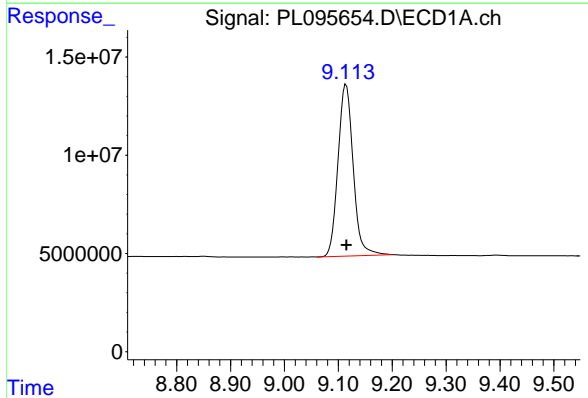
R.T.: 0.000 min  
 Exp R.T.: 6.911 min  
 Response: 0  
 Conc: N.D.

Instrument :  
 ECD\_L  
 ClientSampleId :  
 I.BLK



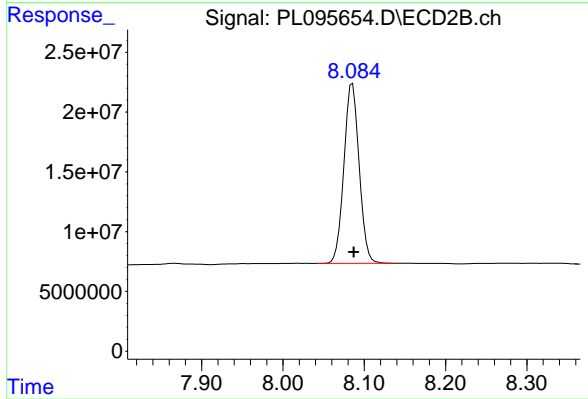
#27 Chlordane-5

R.T.: 6.097 min  
 Delta R.T.: -0.007 min  
 Response: 251845275  
 Conc: 876.82 ng/ml



#28 Decachlorobiphenyl

R.T.: 9.114 min  
 Delta R.T.: 0.000 min  
 Response: 171083779  
 Conc: 50.43 ng/ml



#28 Decachlorobiphenyl

R.T.: 8.085 min  
 Delta R.T.: -0.002 min  
 Response: 195083609  
 Conc: 47.30 ng/ml