

Data Path : Z:\pestpcbsrv\HPCHEM1\ECD\_L\Data\PL051523\  
 Data File : PL082717.D  
 Signal(s) : Signal #1: ECD1A.ch Signal #2: ECD2B.ch  
 Acq On : 15 May 2023 13:52  
 Operator : AR\AJ  
 Sample : PB152774BL  
 Misc :  
 ALS Vial : 16 Sample Multiplier: 1

Instrument :  
 ECD\_L  
 ClientSampleId :

Integration File signal 1: autoint1.e  
 Integration File signal 2: autoint2.e  
 Quant Time: May 15 22:00:21 2023  
 Quant Method : Z:\pestpcbsrv\HPCHEM1\ECD\_L\methods\PL042023.M  
 Quant Title : GC Extractables  
 QLast Update : Fri Apr 21 03:12:31 2023  
 Response via : Initial Calibration  
 Integrator: ChemStation

Volume Inj. : 1 µl  
 Signal #1 Phase : ZB-MR2 Signal #2 Phase: ZB-MR1  
 Signal #1 Info : 30M x 0.32mm x0.2 Signal #2 Info : 30M x 0.32mm x0.5µm

Compound	RT#1	RT#2	Resp#1	Resp#2	ng/ml	ng/ml
-----						
System Monitoring Compounds						
1) SA Tetrachlo...	3.326	2.643	46904192	38033926	17.559	16.417
28) SA Decachlor...	8.745	7.753	35653527	36717241	18.676	16.086
Target Compounds						
3) MA gamma-BHC...	0.000	3.482	0	1013112	N.D.	0.315 #
5) MB Aldrin	0.000	4.106f	0	1049718	N.D.	0.333 #
6) B beta-BHC	0.000	3.771	0	114937	N.D.	0.084 #
7) B delta-BHC	4.544	4.005	3791030	337777	1.054	0.110 #
8) B Heptachlo...	5.462f	4.581	2267679	32355	0.743	0.011 #
9) A Endosulfan I	5.824	4.953	503413	23988	0.182	0.009 #
10) B gamma-Chl...	5.693	4.827	1077548	546343	0.358	0.188 #
11) B alpha-Chl...	5.778	4.899	870425	198888	0.292	0.069 #
12) B 4,4'-DDE	0.000	5.101f	0	101839	N.D.	0.044 #
13) MA Dieldrin	0.000	5.205	0	41118	N.D.	0.015 #
14) MA Endrin	0.000	5.510f	0	676920	N.D.	0.277 #
15) B Endosulfa...	6.536	0.000	298402	0	0.123	N.D. #
17) MA 4,4'-DDT	0.000	5.888	0	26746	N.D.	0.013 #
18) B Endrin al...	0.000	5.949f	0	27707	N.D.	0.015 #
20) A Methoxychlor	0.000	6.477	0	32060	N.D.	0.026 #
21) B Endrin ke...	0.000	6.676f	0	16881	N.D.	0.007 #
23) Chlordane-1	0.000	3.623	0	2151784	N.D.	24.263 #
25) Chlordane-3	5.693	4.827	1077548	546343	2.496	1.923
26) Chlordane-4	5.778	4.899	870425	198888	1.674	0.666 #
27) Chlordane-5	6.597f	0.000	253521	0	2.700	N.D. #

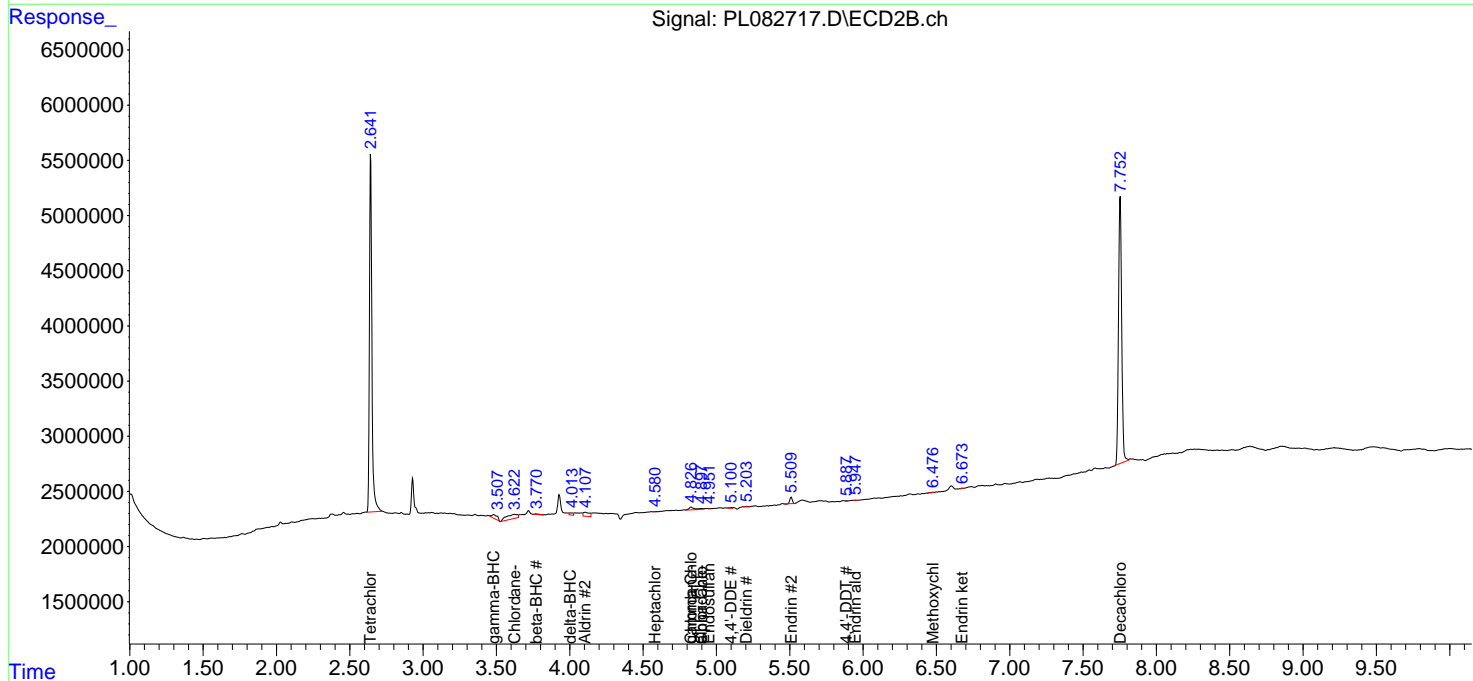
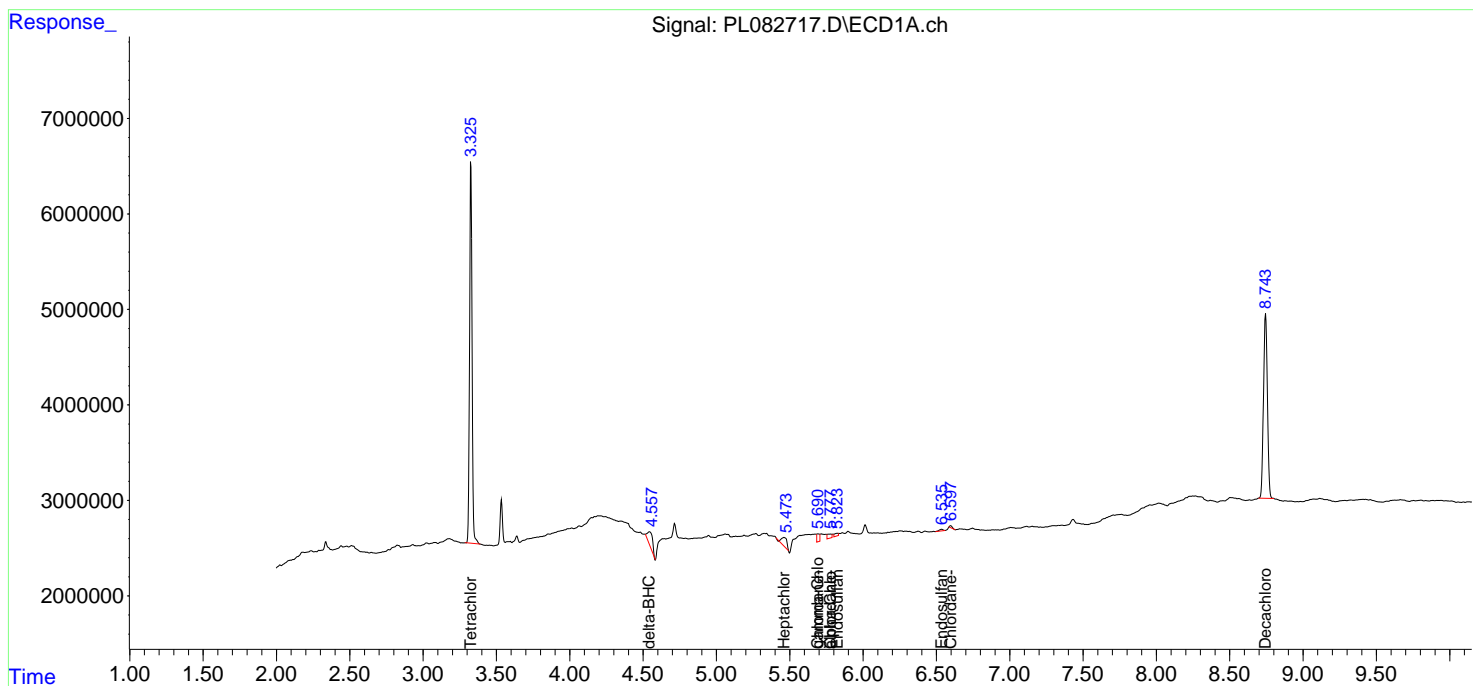
(f)=RT Delta > 1/2 Window (#)=Amounts differ by > 25% (m)=manual int.

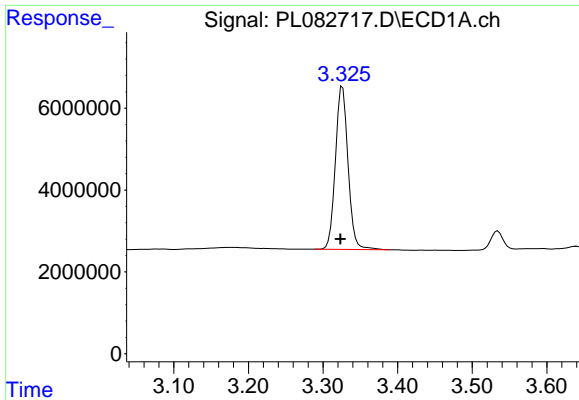
Data Path : Z:\pestpcbsrv\HPCHEM1\ECD\_L\Data\PL051523\  
 Data File : PL082717.D  
 Signal(s) : Signal #1: ECD1A.ch Signal #2: ECD2B.ch  
 Acq On : 15 May 2023 13:52  
 Operator : AR\AJ  
 Sample : PB152774BL  
 Misc :  
 ALS Vial : 16 Sample Multiplier: 1

Instrument :  
 ECD\_L  
 ClientSampleId :

Integration File signal 1: autoint1.e  
 Integration File signal 2: autoint2.e  
 Quant Time: May 15 22:00:21 2023  
 Quant Method : Z:\pestpcbsrv\HPCHEM1\ECD\_L\methods\PL042023.M  
 Quant Title : GC Extractables  
 QLast Update : Fri Apr 21 03:12:31 2023  
 Response via : Initial Calibration  
 Integrator: ChemStation

Volume Inj. : 1 µl  
 Signal #1 Phase : ZB-MR2 Signal #2 Phase: ZB-MR1  
 Signal #1 Info : 30M x 0.32mm x0.2 Signal #2 Info : 30M x 0.32mm x0.5µm

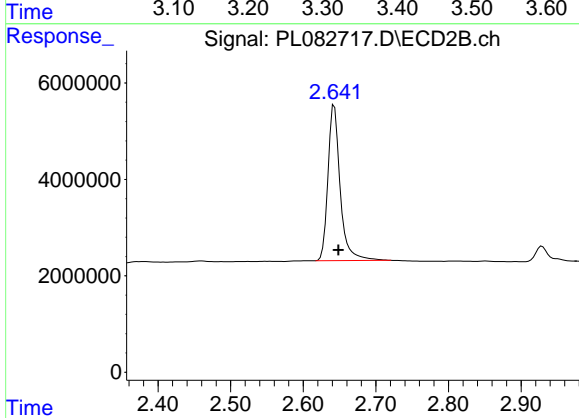




#1 Tetrachloro-m-xylene

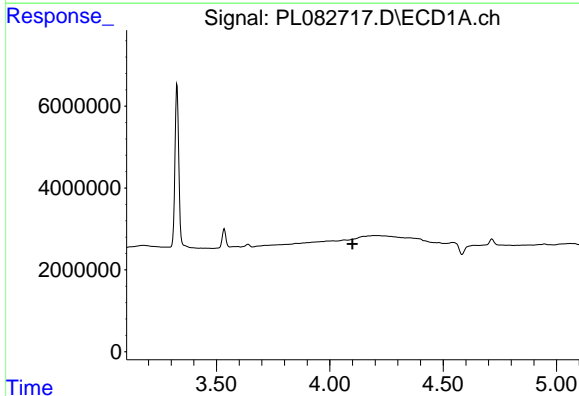
R.T.: 3.326 min  
 Delta R.T.: 0.003 min  
 Response: 46904192  
 Conc: 17.56 ng/ml

Instrument :  
 ECD\_L  
 ClientSampleId :



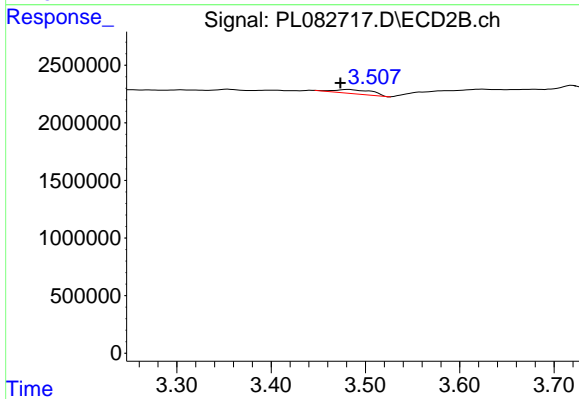
#1 Tetrachloro-m-xylene

R.T.: 2.643 min  
 Delta R.T.: -0.005 min  
 Response: 38033926  
 Conc: 16.42 ng/ml



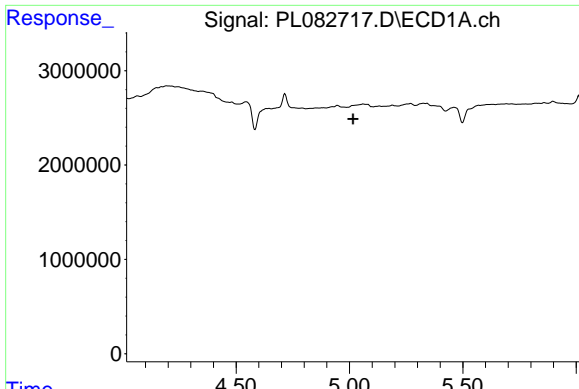
#3 gamma-BHC (Lindane)

R.T.: 0.000 min  
 Exp R.T. : 4.100 min  
 Response: 0  
 Conc: N.D.



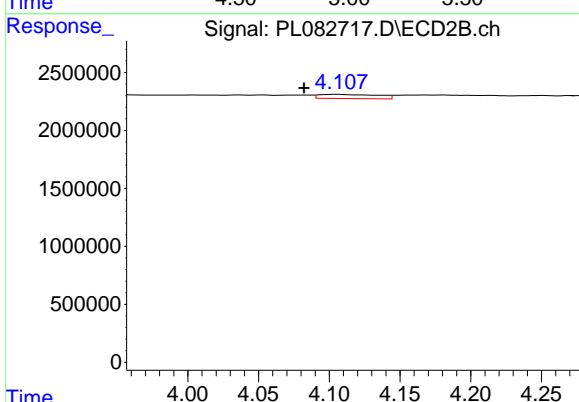
#3 gamma-BHC (Lindane)

R.T.: 3.482 min  
 Delta R.T.: 0.008 min  
 Response: 1013112  
 Conc: 0.32 ng/ml

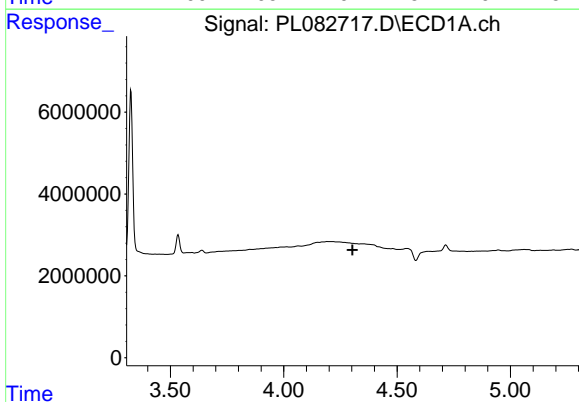


#5 Aldrin  
 R.T.: 0.000 min  
 Exp R.T.: 5.016 min  
 Response: 0  
 Conc: N.D.

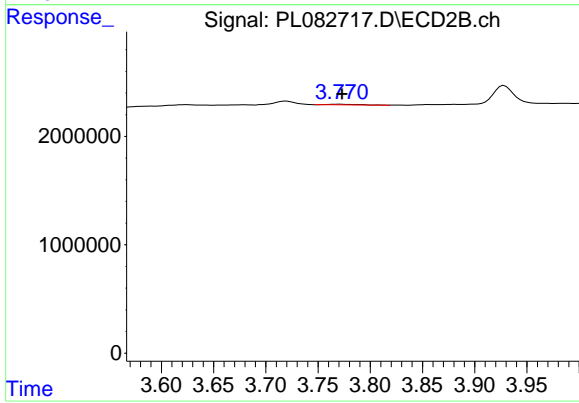
Instrument :  
 ECD\_L  
 ClientSampleId :



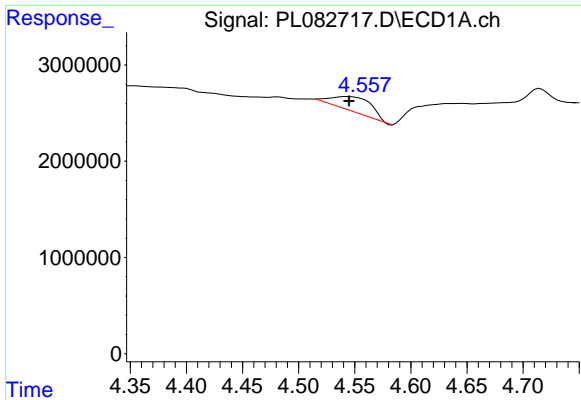
#5 Aldrin  
 R.T.: 4.106 min  
 Delta R.T.: 0.023 min  
 Response: 1049718  
 Conc: 0.33 ng/ml



#6 beta-BHC  
 R.T.: 0.000 min  
 Exp R.T.: 4.304 min  
 Response: 0  
 Conc: N.D.



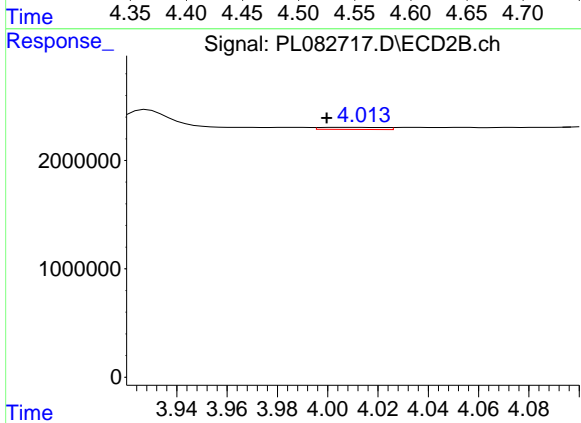
#6 beta-BHC  
 R.T.: 3.771 min  
 Delta R.T.: -0.002 min  
 Response: 114937  
 Conc: 0.08 ng/ml



#7 delta-BHC

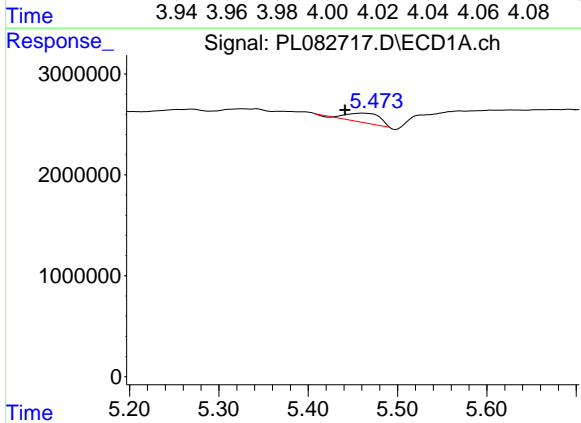
R.T.: 4.544 min  
 Delta R.T.: -0.001 min  
 Response: 3791030  
 Conc: 1.05 ng/ml

Instrument :  
 ECD\_L  
 ClientSampleId :



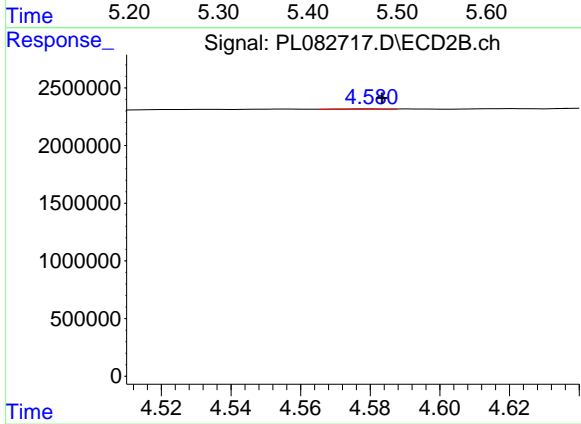
#7 delta-BHC

R.T.: 4.005 min  
 Delta R.T.: 0.005 min  
 Response: 337777  
 Conc: 0.11 ng/ml



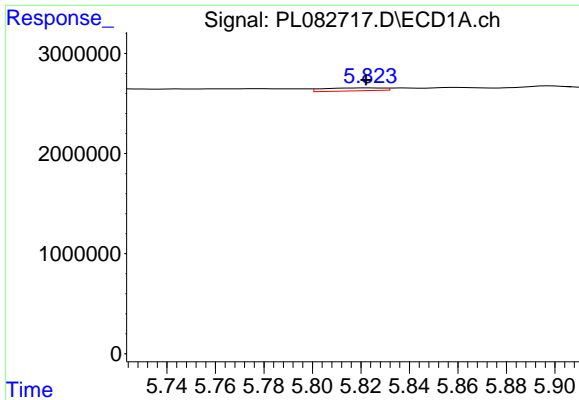
#8 Heptachlor epoxide

R.T.: 5.462 min  
 Delta R.T.: 0.020 min  
 Response: 2267679  
 Conc: 0.74 ng/ml



#8 Heptachlor epoxide

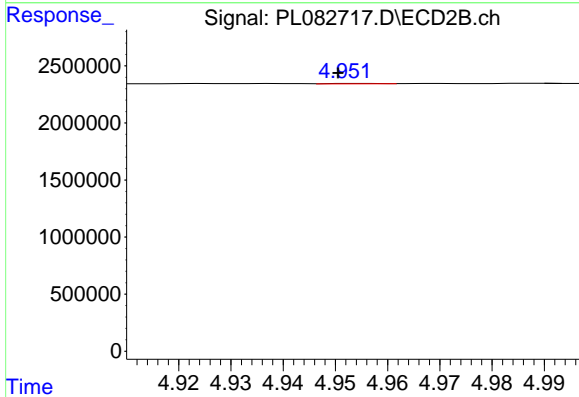
R.T.: 4.581 min  
 Delta R.T.: -0.002 min  
 Response: 32355  
 Conc: 0.01 ng/ml



#9 Endosulfan I

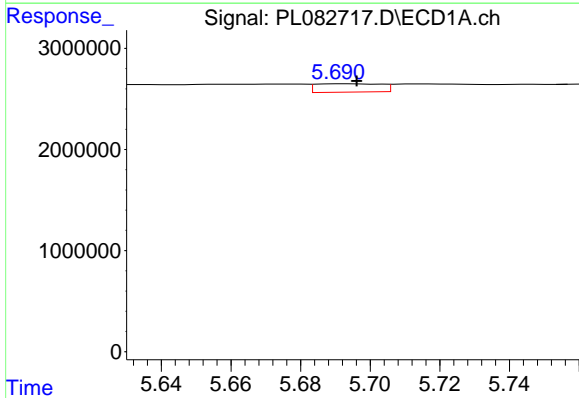
R.T.: 5.824 min  
 Delta R.T.: 0.002 min  
 Response: 503413  
 Conc: 0.18 ng/ml

Instrument :  
 ECD\_L  
 ClientSampleId :



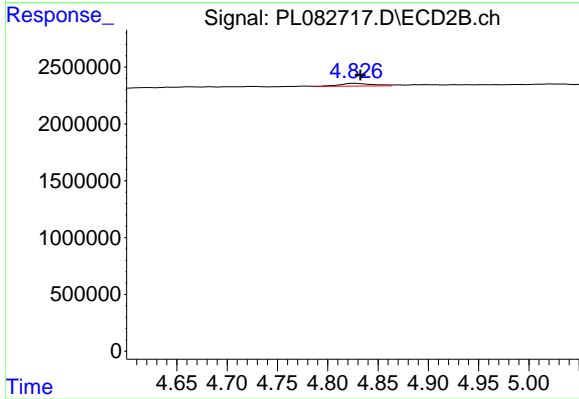
#9 Endosulfan I

R.T.: 4.953 min  
 Delta R.T.: 0.003 min  
 Response: 23988  
 Conc: 0.01 ng/ml



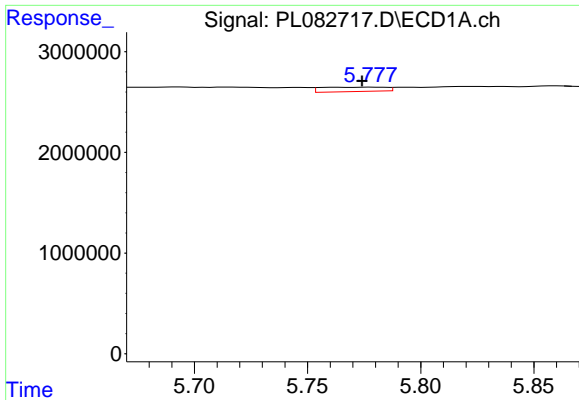
#10 gamma-Chlordane

R.T.: 5.693 min  
 Delta R.T.: -0.003 min  
 Response: 1077548  
 Conc: 0.36 ng/ml



#10 gamma-Chlordane

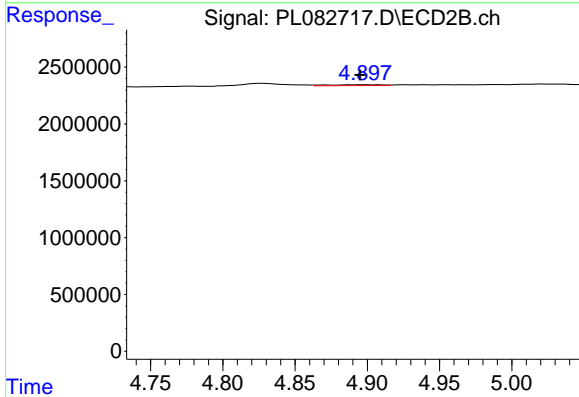
R.T.: 4.827 min  
 Delta R.T.: -0.005 min  
 Response: 546343  
 Conc: 0.19 ng/ml



#11 alpha-Chlordane

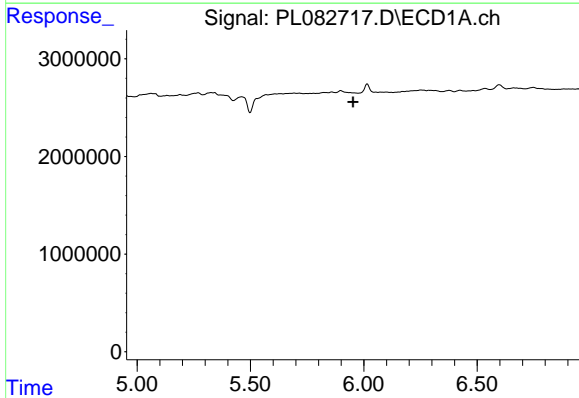
R.T.: 5.778 min  
 Delta R.T.: 0.004 min  
 Response: 870425  
 Conc: 0.29 ng/ml

Instrument :  
 ECD\_L  
 ClientSampleId :



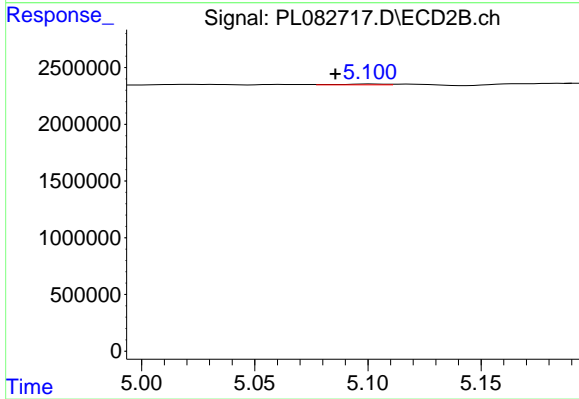
#11 alpha-Chlordane

R.T.: 4.899 min  
 Delta R.T.: 0.004 min  
 Response: 198888  
 Conc: 0.07 ng/ml



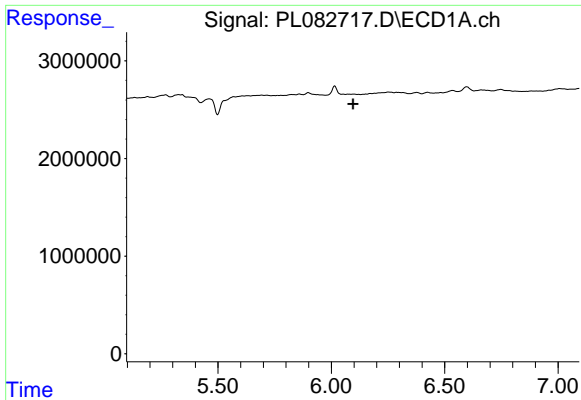
#12 4,4'-DDE

R.T.: 0.000 min  
 Exp R.T. : 5.952 min  
 Response: 0  
 Conc: N.D.



#12 4,4'-DDE

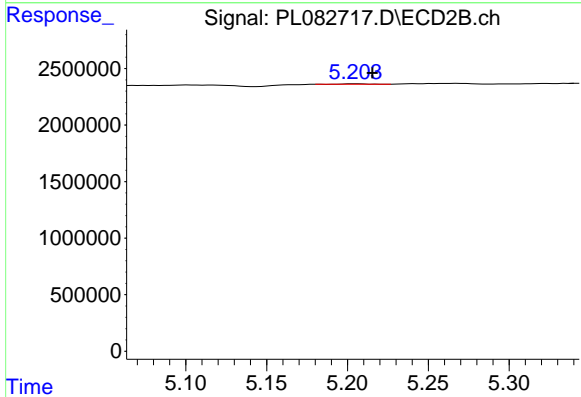
R.T.: 5.101 min  
 Delta R.T.: 0.016 min  
 Response: 101839  
 Conc: 0.04 ng/ml



#13 Dieldrin

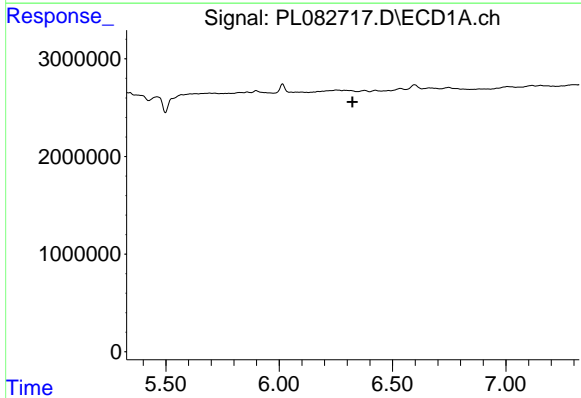
R.T.: 0.000 min  
 Exp R.T. : 6.097 min  
 Response: 0  
 Conc: N.D.

Instrument :  
 ECD\_L  
 ClientSampleId :



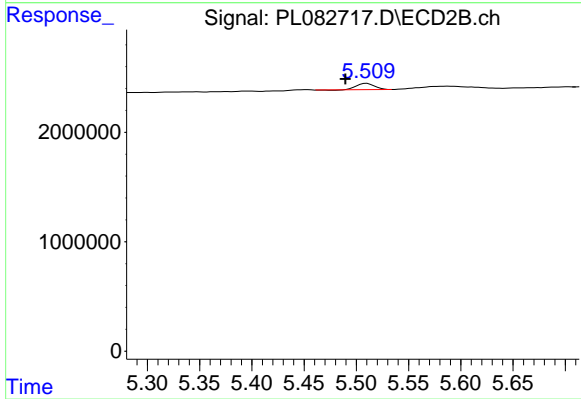
#13 Dieldrin

R.T.: 5.205 min  
 Delta R.T.: -0.011 min  
 Response: 41118  
 Conc: 0.02 ng/ml



#14 Endrin

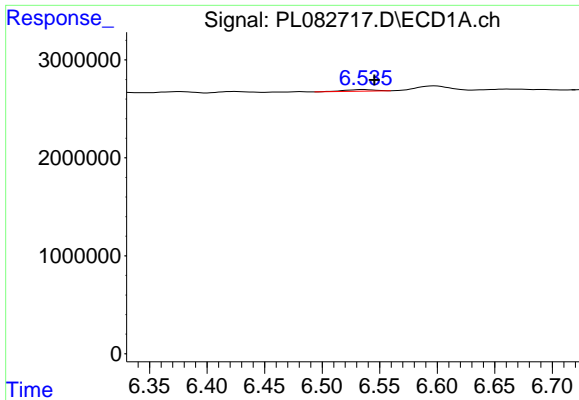
R.T.: 0.000 min  
 Exp R.T. : 6.324 min  
 Response: 0  
 Conc: N.D.



#14 Endrin

R.T.: 5.510 min  
 Delta R.T.: 0.021 min  
 Response: 676920  
 Conc: 0.28 ng/ml

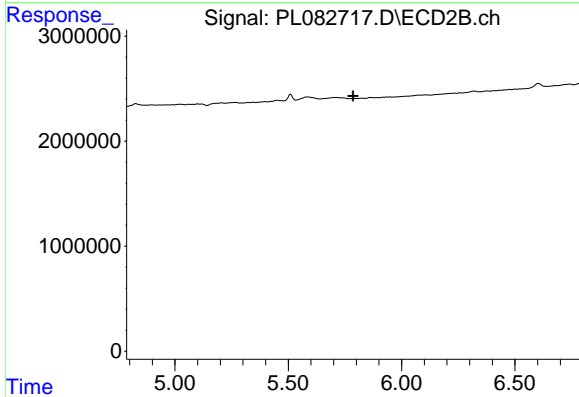




#15 Endosulfan II

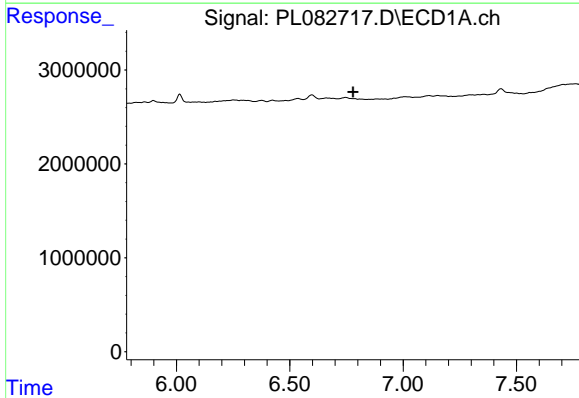
R.T.: 6.536 min  
 Delta R.T.: -0.009 min  
 Response: 298402  
 Conc: 0.12 ng/ml

Instrument :  
 ECD\_L  
 ClientSampleId :



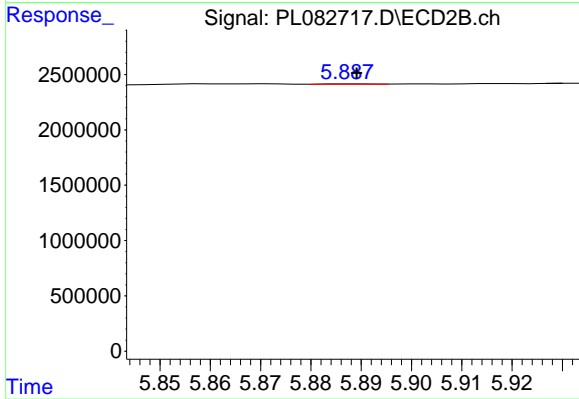
#15 Endosulfan II

R.T.: 0.000 min  
 Exp R.T. : 5.786 min  
 Response: 0  
 Conc: N.D.



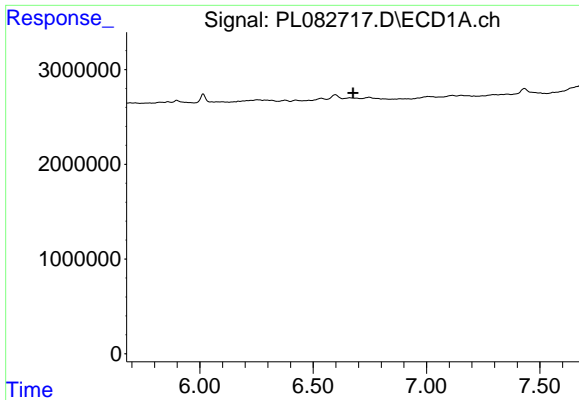
#17 4,4'-DDT

R.T.: 0.000 min  
 Exp R.T. : 6.779 min  
 Response: 0  
 Conc: N.D.



#17 4,4'-DDT

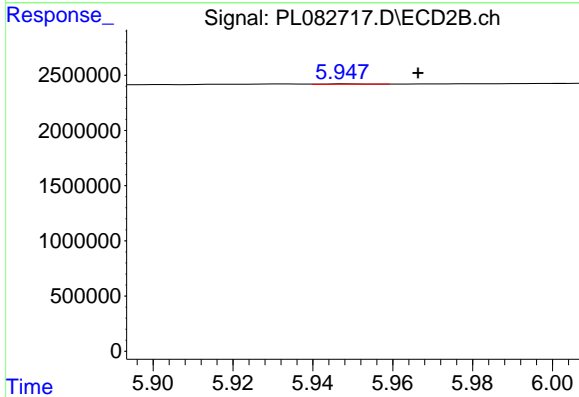
R.T.: 5.888 min  
 Delta R.T.: -0.001 min  
 Response: 26746  
 Conc: 0.01 ng/ml



#18 Endrin aldehyde

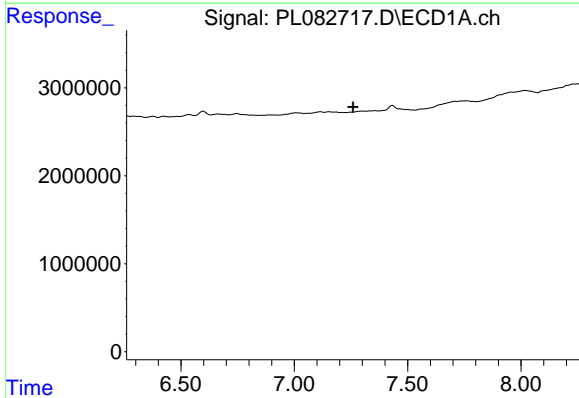
R.T.: 0.000 min  
 Exp R.T.: 6.676 min  
 Response: 0  
 Conc: N.D.

Instrument :  
 ECD\_L  
 ClientSampleId :



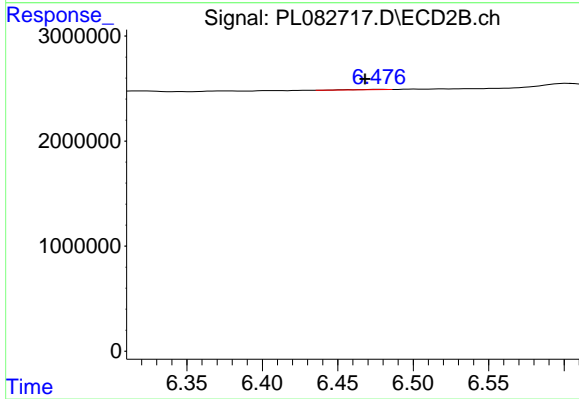
#18 Endrin aldehyde

R.T.: 5.949 min  
 Delta R.T.: -0.018 min  
 Response: 27707  
 Conc: 0.01 ng/ml



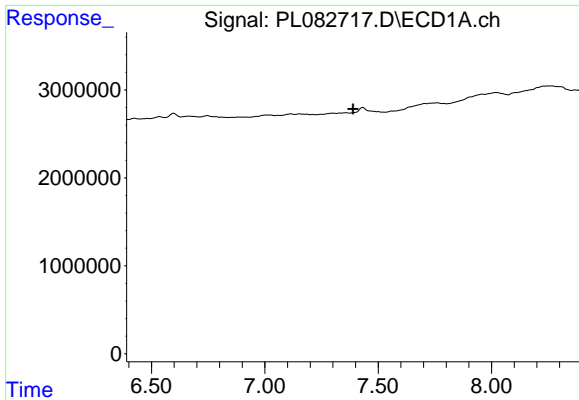
#20 Methoxychlor

R.T.: 0.000 min  
 Exp R.T.: 7.260 min  
 Response: 0  
 Conc: N.D.



#20 Methoxychlor

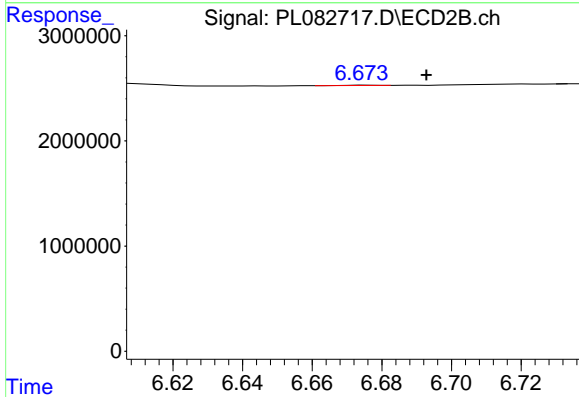
R.T.: 6.477 min  
 Delta R.T.: 0.009 min  
 Response: 32060  
 Conc: 0.03 ng/ml



#21 Endrin ketone

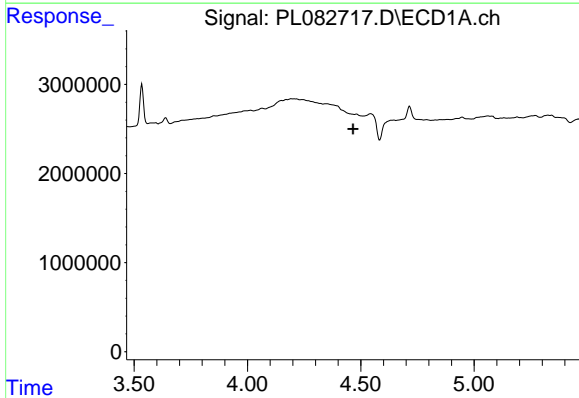
R.T.: 0.000 min  
 Exp R.T.: 7.390 min  
 Response: 0  
 Conc: N.D.

Instrument :  
 ECD\_L  
 ClientSampleId :



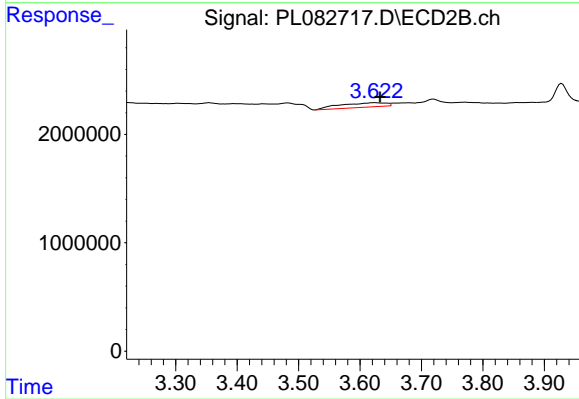
#21 Endrin ketone

R.T.: 6.676 min  
 Delta R.T.: -0.017 min  
 Response: 16881  
 Conc: 0.01 ng/ml



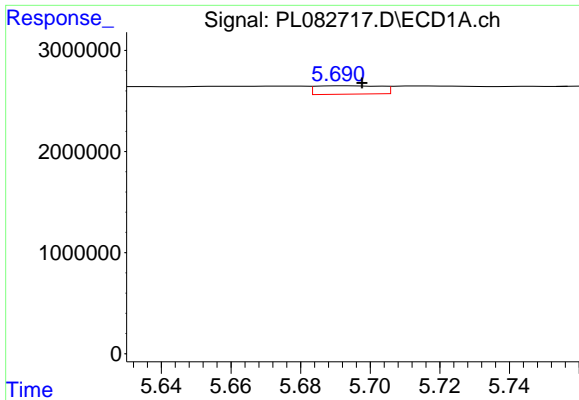
#23 Chlordane-1

R.T.: 0.000 min  
 Exp R.T.: 4.466 min  
 Response: 0  
 Conc: N.D.



#23 Chlordane-1

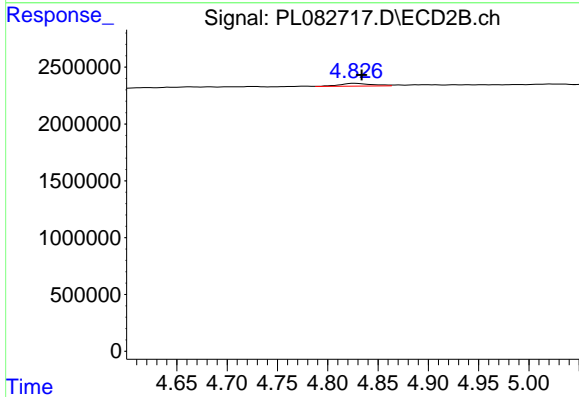
R.T.: 3.623 min  
 Delta R.T.: -0.009 min  
 Response: 2151784  
 Conc: 24.26 ng/ml



#25 Chlordane-3

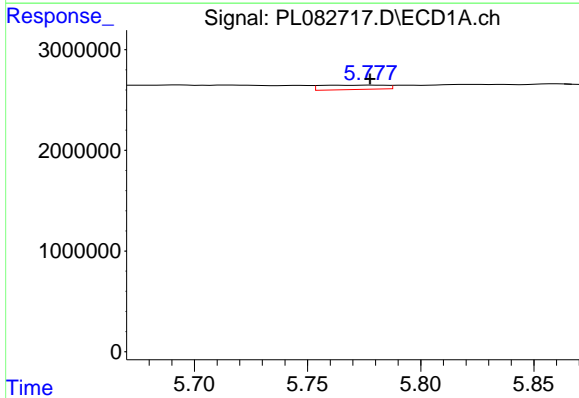
R.T.: 5.693 min  
 Delta R.T.: -0.005 min  
 Response: 1077548  
 Conc: 2.50 ng/ml

Instrument :  
 ECD\_L  
 ClientSampleId :



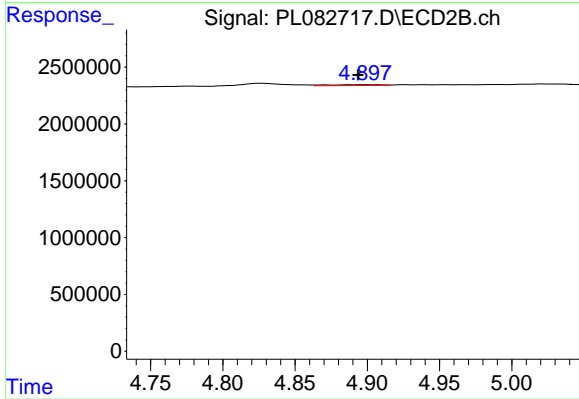
#25 Chlordane-3

R.T.: 4.827 min  
 Delta R.T.: -0.007 min  
 Response: 546343  
 Conc: 1.92 ng/ml



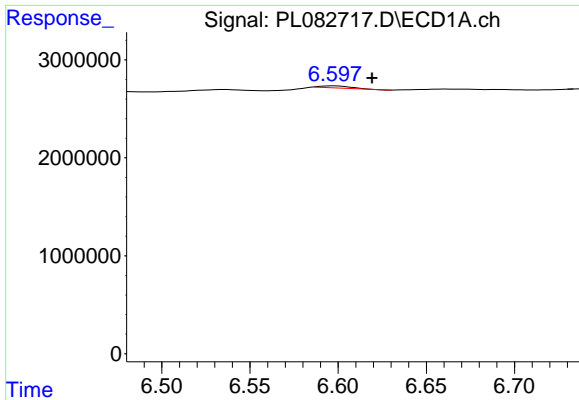
#26 Chlordane-4

R.T.: 5.778 min  
 Delta R.T.: 0.000 min  
 Response: 870425  
 Conc: 1.67 ng/ml



#26 Chlordane-4

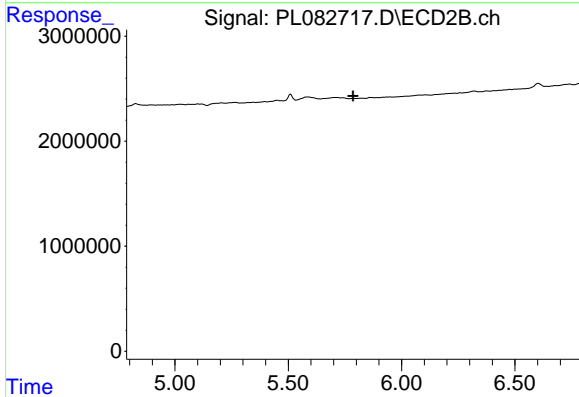
R.T.: 4.899 min  
 Delta R.T.: 0.005 min  
 Response: 198888  
 Conc: 0.67 ng/ml



#27 Chlordane-5

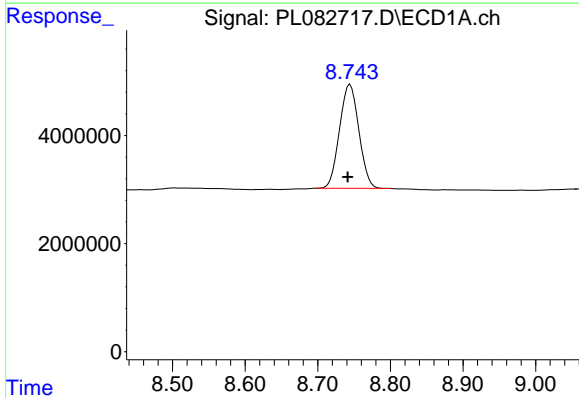
R.T.: 6.597 min  
Delta R.T.: -0.022 min  
Response: 253521  
Conc: 2.70 ng/ml

Instrument :  
ECD\_L  
ClientSampleId :



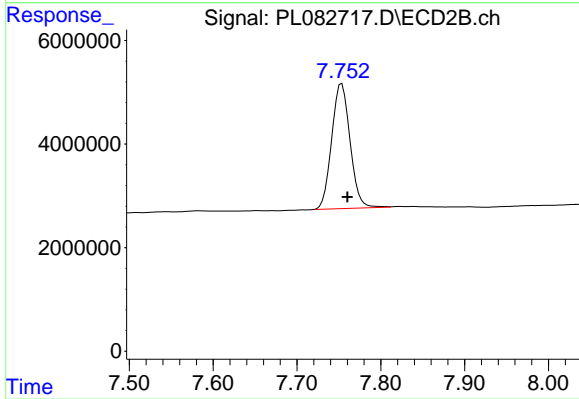
#27 Chlordane-5

R.T.: 0.000 min  
Exp R.T. : 5.786 min  
Response: 0  
Conc: N.D.



#28 Decachlorobiphenyl

R.T.: 8.745 min  
Delta R.T.: 0.004 min  
Response: 35653527  
Conc: 18.68 ng/ml



#28 Decachlorobiphenyl

R.T.: 7.753 min  
Delta R.T.: -0.007 min  
Response: 36717241  
Conc: 16.09 ng/ml