

Data Path : Z:\pestpcbsrv\HPCHEM1\ECD_L\Data\PL051619\
 Data File : PL048563.D
 Signal(s) : Signal #1: ECD1A.ch Signal #2: ECD2B.ch
 Acq On : 15 May 2019 19:23
 Operator : AJ\SJ
 Sample : K2853-02
 Misc :
 ALS Vial : 11 Sample Multiplier: 1

Instrument :
 ECD_L
ClientSampled :
 A51A5

Manual Integrations
APPROVED
 Ankita
 5/16/2019 9:45:55 AM

Integration File signal 1: autoint1.e
 Integration File signal 2: autoint2.e
 Quant Time: May 16 03:24:25 2019
 Quant Method : Z:\pestpcbsrv\HPCHEM1\ECD_L\methods\PL050919CLP.M
 Quant Title : GC Extractables
 QLast Update : Fri May 10 01:24:11 2019
 Response via : Initial Calibration
 Integrator: ChemStation

Volume Inj. : 1 µl
 Signal #1 Phase : ZB-MR2 Signal #2 Phase: ZB-MR1
 Signal #1 Info : 30M x 0.32mm x0.2 Signal #2 Info : 30M x 0.32mm x 0.50µm

Compound	RT#1	RT#2	Resp#1	Resp#2	ng/ml	ng/ml

System Monitoring Compounds						
1) SA Tetrachlo...	3.326	3.939	186.8E6	48637449	18.015m	18.449
27) SA Decachlor...	7.996	8.978	267.0E6	74317426	25.054	27.261

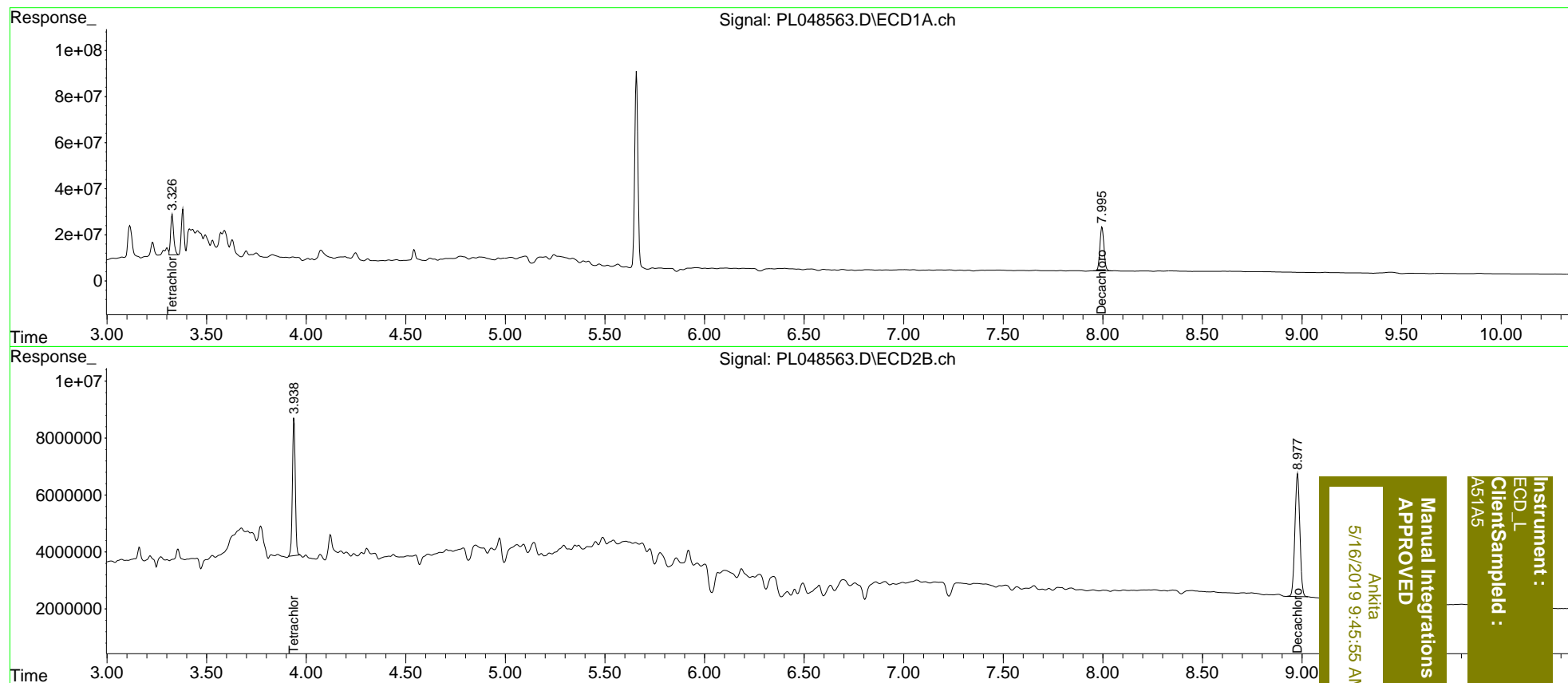
Target Compounds

 (f)=RT Delta > 1/2 Window (#)=Amounts differ by > 25% (m)=manual int.

Data Path : Z:\pestpcbsrv\HPCHEM1\ECD_L\Data\PL051619\
 Data File : PL048563.D
 Signal(s) : Signal #1: ECD1A.ch Signal #2: ECD2B.ch
 Acq On : 15 May 2019 19:23
 Operator : AJ\SJ
 Sample : K2853-02
 Misc :
 ALS Vial : 11 Sample Multiplier: 1

Integration File signal 1: autoint1.e
 Integration File signal 2: autoint2.e
 Quant Time: May 16 03:24:25 2019
 Quant Method : Z:\pestpcbsrv\HPCHEM1\ECD_L\methods\PL050919CLP.M
 Quant Title : GC Extractables
 QLast Update : Fri May 10 01:24:11 2019
 Response via : Initial Calibration
 Integrator: ChemStation

Volume Inj. : 1 µl
 Signal #1 Phase : ZB-MR2 Signal #2 Phase: ZB-MR1
 Signal #1 Info : 30M x 0.32mm x0.2 Signal #2 Info : 30M x 0.32mm x 0.50µm



Instrument :
 ECD_L
 ClientSampleId :
 A51A5

Manual Integrations
 APPROVED
 Ankitia
 5/16/2019 9:45:55 AM