

Data Path : Z:\pestpcbsrv\HPCHEM1\ECD_L\Data\PL051619\
 Data File : PL048573.D
 Signal(s) : Signal #1: ECD1A.ch Signal #2: ECD2B.ch
 Acq On : 15 May 2019 21:54
 Operator : AJ\SJ
 Sample : PIBLK62
 Misc :
 ALS Vial : 2 Sample Multiplier: 1

Instrument :
 ECD_L
 ClientSampleId :
 PIBLK62

Integration File signal 1: autoint1.e
 Integration File signal 2: autoint2.e
 Quant Time: May 16 03:27:03 2019
 Quant Method : Z:\pestpcbsrv\HPCHEM1\ECD_L\methods\PL050919CLP.M
 Quant Title : GC Extractables
 QLast Update : Fri May 10 01:24:11 2019
 Response via : Initial Calibration
 Integrator: ChemStation

Volume Inj. : 1 µl
 Signal #1 Phase : ZB-MR2 Signal #2 Phase: ZB-MR1
 Signal #1 Info : 30M x 0.32mm x0.2 Signal #2 Info : 30M x 0.32mm x 0.50µm

Compound	RT#1	RT#2	Resp#1	Resp#2	ng/ml	ng/ml

System Monitoring Compounds						
1) SA Tetrachlo...	3.327	3.939	232.8E6	61704892	22.456	23.406
27) SA Decachlor...	7.996	8.978	438.8E6	117.9E6	41.177	43.241

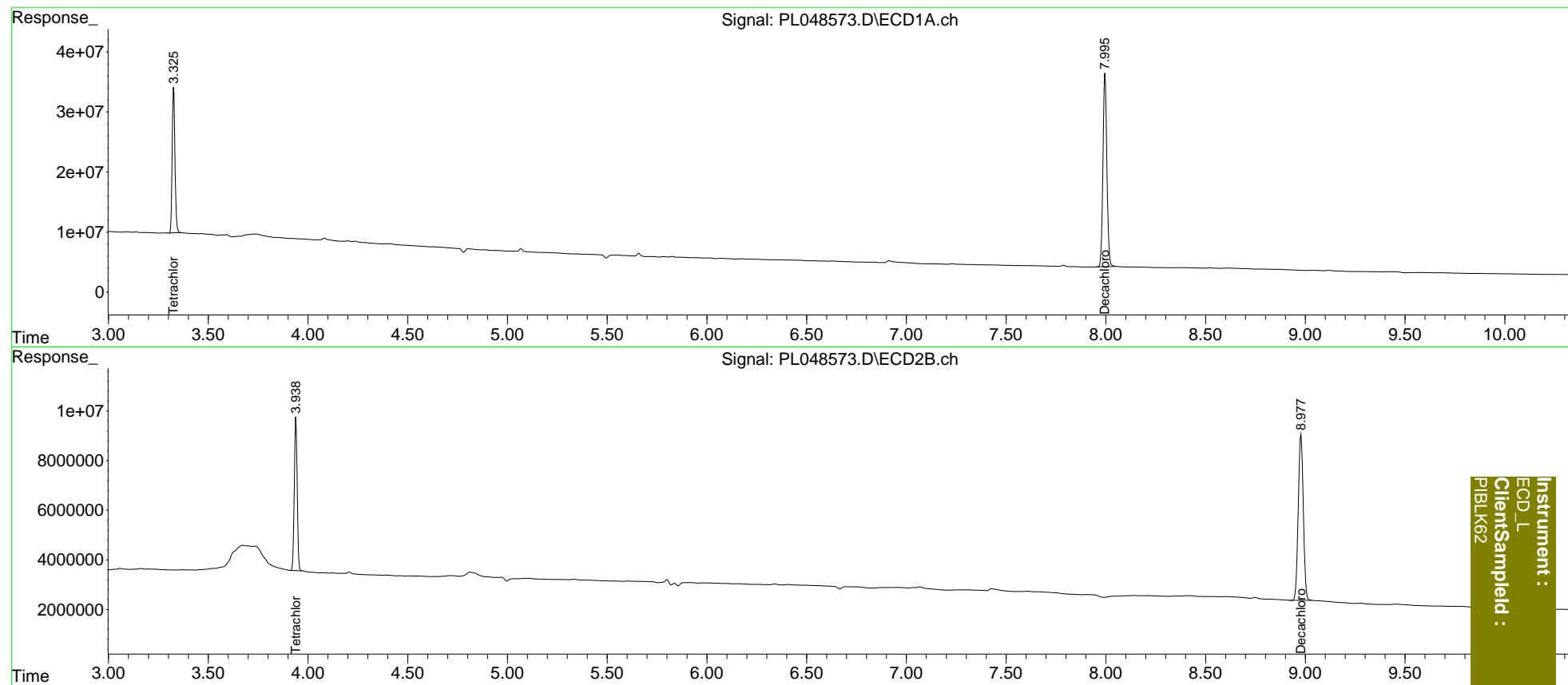
Target Compounds

(f)=RT Delta > 1/2 Window (#)=Amounts differ by > 25% (m)=manual int.

Data Path : Z:\pestpcbsrv\HPCHEM1\ECD_L\Data\PL051619\
Data File : PL048573.D
Signal(s) : Signal #1: ECD1A.ch Signal #2: ECD2B.ch
Acq On : 15 May 2019 21:54
Operator : AJ\SJ
Sample : PIBLK62
Misc :
ALS Vial : 2 Sample Multiplier: 1

Integration File signal 1: autoint1.e
Integration File signal 2: autoint2.e
Quant Time: May 16 03:27:03 2019
Quant Method : Z:\pestpcbsrv\HPCHEM1\ECD_L\methods\PL050919CLP.M
Quant Title : GC Extractables
QLast Update : Fri May 10 01:24:11 2019
Response via : Initial Calibration
Integrator: ChemStation

Volume Inj. : 1 µl
Signal #1 Phase : ZB-MR2 Signal #2 Phase: ZB-MR1
Signal #1 Info : 30M x 0.32mm x0.2 Signal #2 Info : 30M x 0.32mm x 0.50µm



Instrument :
ECD_L
ClientSampleId :
PIBLK62