

Data Path : Z:\pestpcbsrv\HPCHEM1\ECD_L\Data\PL051622\
 Data File : PL074722.D
 Signal(s) : Signal #1: ECD1A.ch Signal #2: ECD2B.ch
 Acq On : 16 May 2022 10:50
 Operator : AR\AJ
 Sample : PSTDCCC050
 Misc :
 ALS Vial : 4 Sample Multiplier: 1

Instrument :
 ECD_L
 ClientSampleId :

Integration File signal 1: autoint1.e
 Integration File signal 2: autoint2.e
 Quant Time: May 17 00:46:32 2022
 Quant Method : Z:\pestpcbsrv\HPCHEM1\ECD_L\methods\PL051122.M
 Quant Title : GC Extractables
 QLast Update : Sat May 14 02:37:15 2022
 Response via : Initial Calibration
 Integrator: ChemStation

Volume Inj. : 1 µl
 Signal #1 Phase : ZB-MR2 Signal #2 Phase: ZB-MR1
 Signal #1 Info : 30M x 0.32mm x0.2 Signal #2 Info : 30M x 0.32mm x0.5µm

	Compound	RT#1	RT#2	Resp#1	Resp#2	ng/ml	ng/ml

System Monitoring Compounds							
1)	SA Tetrachlo...	5.649	4.654	26879222	66936250	52.939	48.769
28)	SA Decachlor...	11.651	10.406	24584875	54857980	55.051	53.446
Target Compounds							
2)	A alpha-BHC	6.233	5.356	37801868	91528664	55.254	54.388
3)	MA gamma-BHC...	6.631	5.776	35858794	86542288	55.552	52.374
4)	MA Heptachlor	7.287	6.187	35342296	80019521	54.763	52.719
5)	MB Aldrin	7.661	6.511	33634396	78057779	54.295	52.022
6)	B beta-BHC	6.882	6.153	16434397	40647163	55.065	51.195
7)	B delta-BHC	7.153	6.415	35195394	83957197	56.129	53.691
8)	B Heptachlo...	8.128	7.085	31904410	72299519	56.096	51.947
9)	A Endosulfan I	8.537	7.488	31382636	66413924	54.437	53.083
10)	B gamma-Chl...	8.399	7.362	29911744	73172424	57.828	52.800
11)	B alpha-Chl...	8.480	7.431	33549865	72253498	54.955	53.449
12)	B 4,4'-DDE	8.666	7.643	27095359	64490149	58.530	54.806
13)	MA Dieldrin	8.827	7.773	29421595	71122669	55.976	55.830
14)	MA Endrin	9.068	8.064	23775660	58354372	57.615	55.244
15)	B Endosulfa...	9.301	8.373	24802882	56874291	56.421	50.349
16)	A 4,4'-DDD	9.208	8.227	24069548	54210715	53.237	55.029
17)	MA 4,4'-DDT	9.527	8.489	25502581	54202473	55.485	54.175
18)	B Endrin al...	9.437	8.561	20192893	43332956	57.055	54.255
19)	B Endosulfa...	9.675	8.792	25254472	58743749	55.876	53.966
20)	A Methoxychlor	10.013	9.083	13561037	30684049	55.371	52.506
21)	B Endrin ke...	10.177	9.310	28942110	63965914	56.435	57.374
22)	Mirex	10.651	9.499	22656905	52649982	56.150	54.357
24)	Chlordane-2	7.661f	0.000	33634396	0	1517.521	N.D. #
25)	Chlordane-3	8.399	7.362	29911744	73172424	436.928	563.775 #
26)	Chlordane-4	8.480	7.431	33549865	72253498	348.244	527.062 #
27)	Chlordane-5	0.000	8.142	0	396088	N.D.	10.713 #

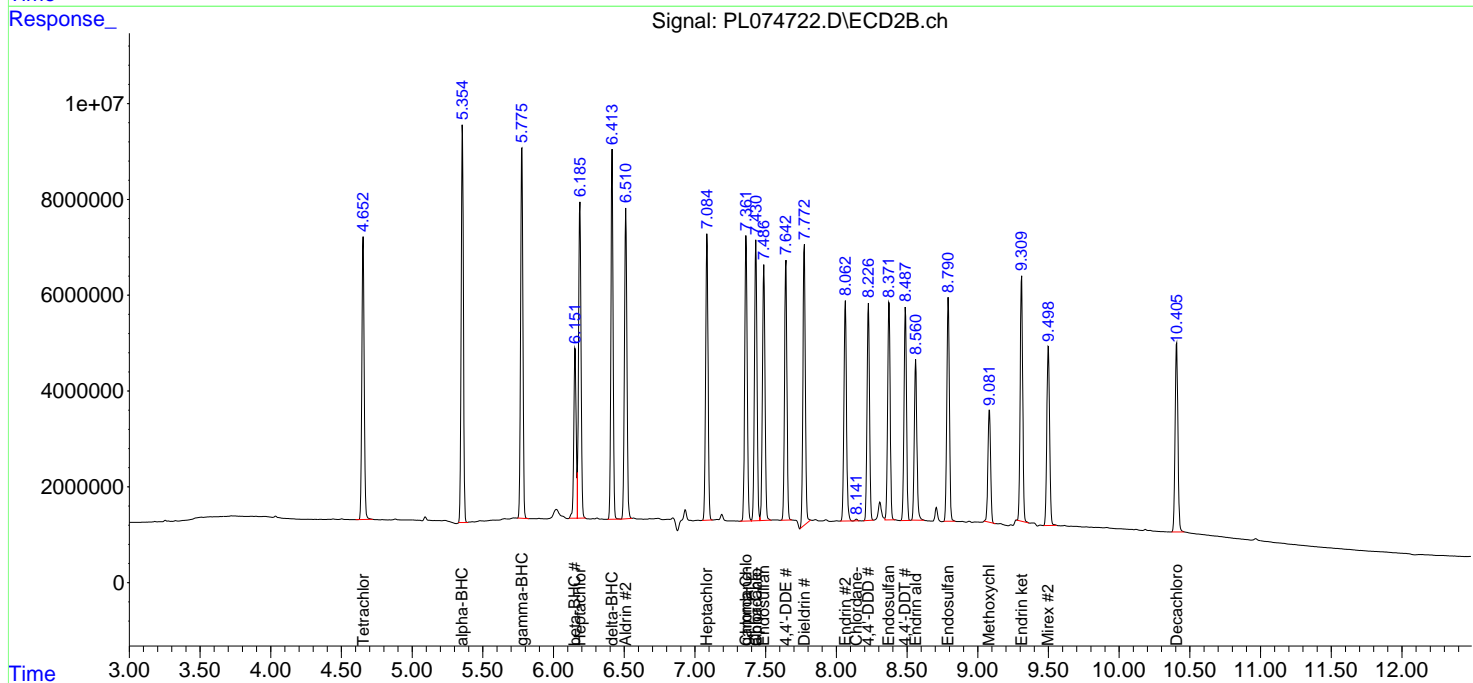
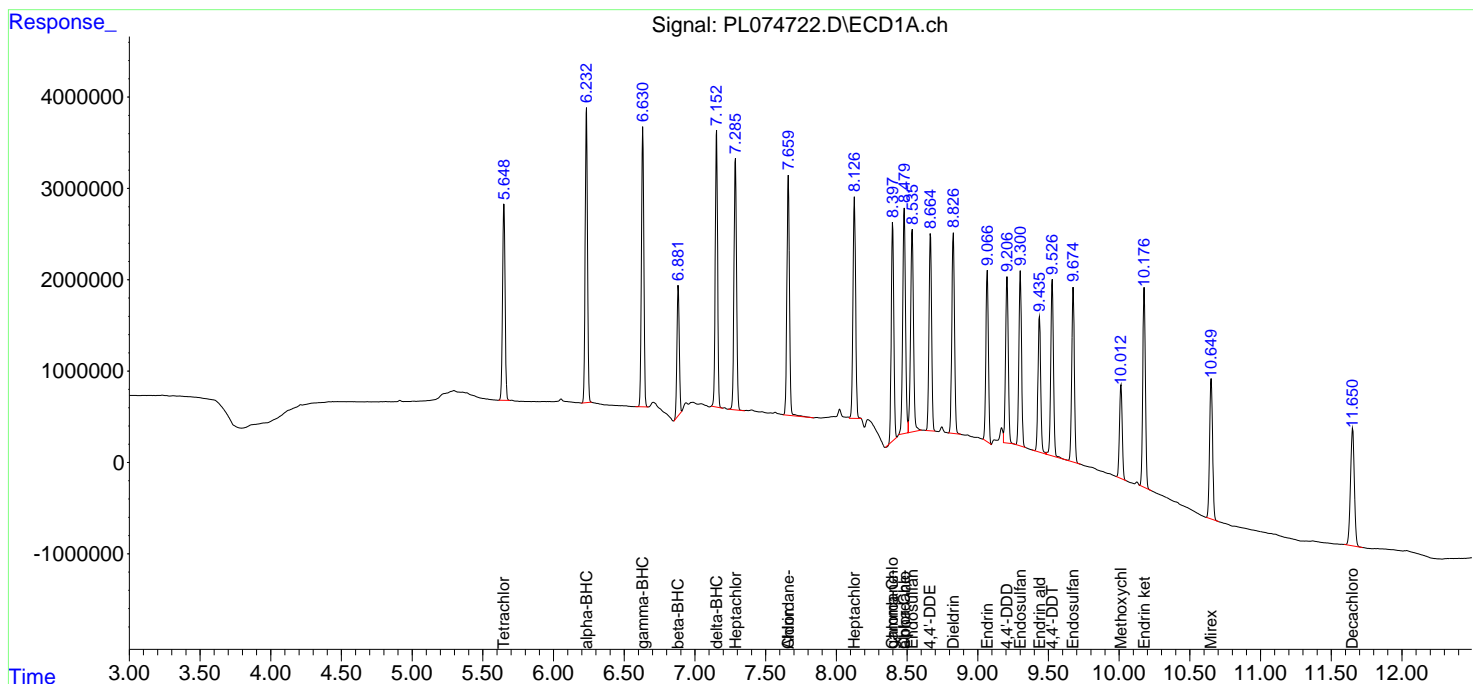
(f)=RT Delta > 1/2 Window (#)=Amounts differ by > 25% (m)=manual int.

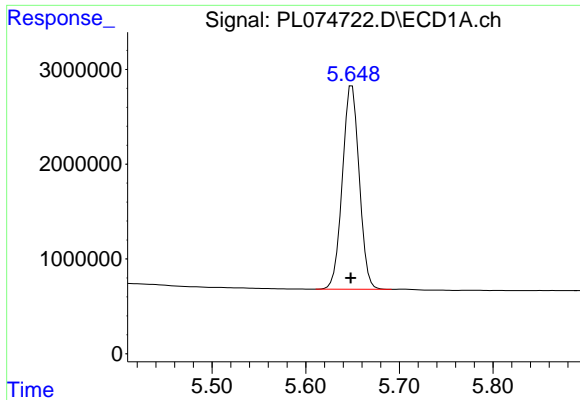
Data Path : Z:\pestpcbsrv\HPCHEM1\ECD_L\Data\PL051622\
 Data File : PL074722.D
 Signal(s) : Signal #1: ECD1A.ch Signal #2: ECD2B.ch
 Acq On : 16 May 2022 10:50
 Operator : AR\AJ
 Sample : PSTDCCC050
 Misc :
 ALS Vial : 4 Sample Multiplier: 1

Instrument :
 ECD_L
 ClientSampleId :

Integration File signal 1: autoint1.e
 Integration File signal 2: autoint2.e
 Quant Time: May 17 00:46:32 2022
 Quant Method : Z:\pestpcbsrv\HPCHEM1\ECD_L\methods\PL051122.M
 Quant Title : GC Extractables
 QLast Update : Sat May 14 02:37:15 2022
 Response via : Initial Calibration
 Integrator: ChemStation

Volume Inj. : 1 µl
 Signal #1 Phase : ZB-MR2 Signal #2 Phase: ZB-MR1
 Signal #1 Info : 30M x 0.32mm x0.2 Signal #2 Info : 30M x 0.32mm x0.5µm

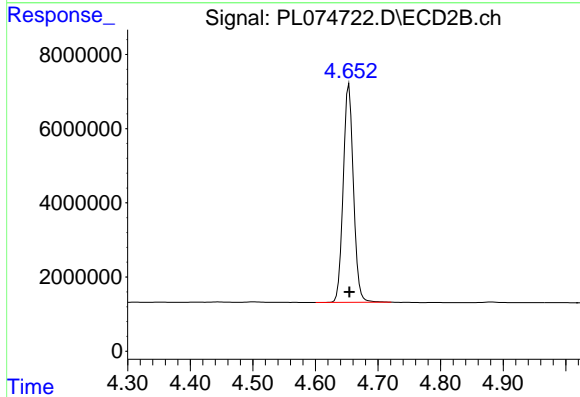




#1 Tetrachloro-m-xylene

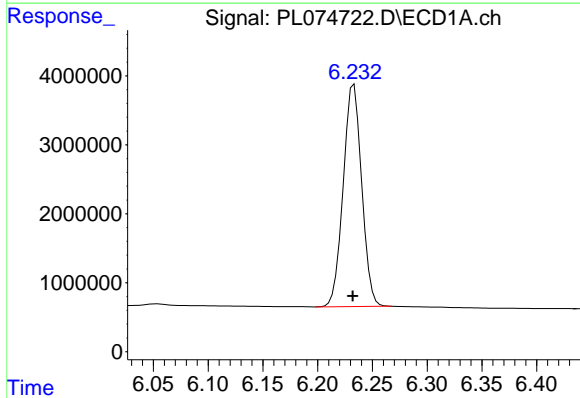
R.T.: 5.649 min
 Delta R.T.: 0.001 min
 Response: 26879222
 Conc: 52.94 ng/ml

Instrument :
 ECD_L
 ClientSampleId :



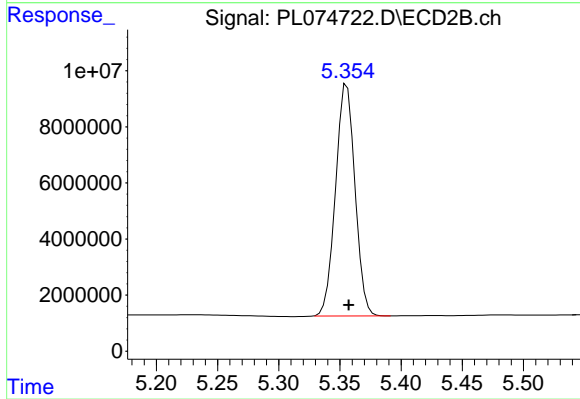
#1 Tetrachloro-m-xylene

R.T.: 4.654 min
 Delta R.T.: 0.000 min
 Response: 66936250
 Conc: 48.77 ng/ml



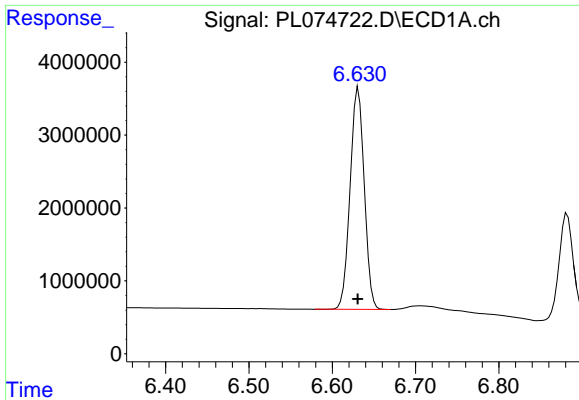
#2 alpha-BHC

R.T.: 6.233 min
 Delta R.T.: 0.001 min
 Response: 37801868
 Conc: 55.25 ng/ml



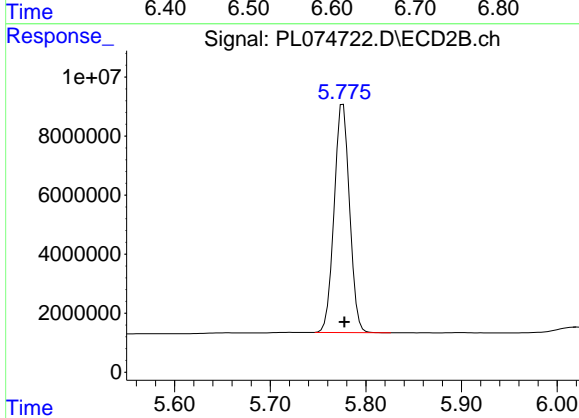
#2 alpha-BHC

R.T.: 5.356 min
 Delta R.T.: -0.001 min
 Response: 91528664
 Conc: 54.39 ng/ml

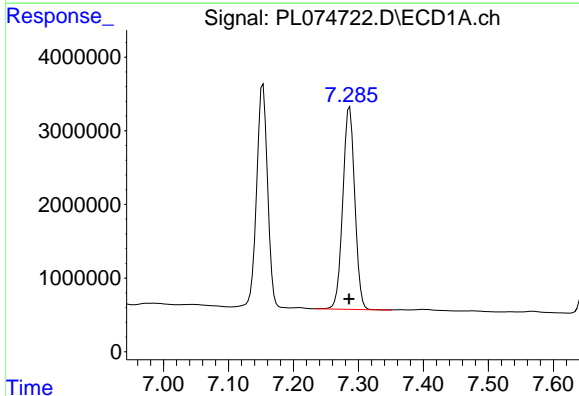


#3 gamma-BHC (Lindane)
 R.T.: 6.631 min
 Delta R.T.: 0.000 min
 Response: 35858794
 Conc: 55.55 ng/ml

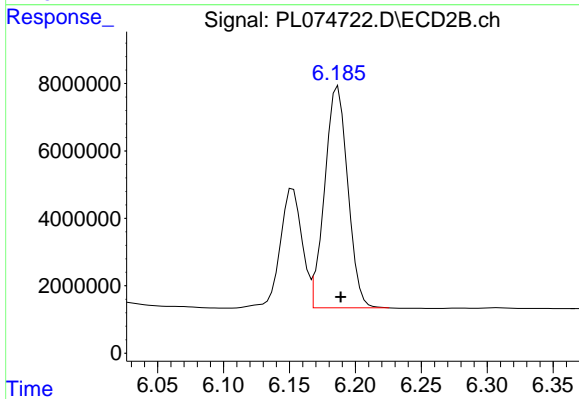
Instrument :
 ECD_L
 ClientSampleId :



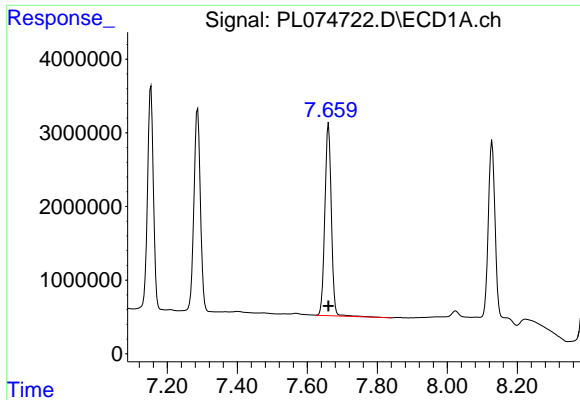
#3 gamma-BHC (Lindane)
 R.T.: 5.776 min
 Delta R.T.: -0.001 min
 Response: 86542288
 Conc: 52.37 ng/ml



#4 Heptachlor
 R.T.: 7.287 min
 Delta R.T.: 0.000 min
 Response: 35342296
 Conc: 54.76 ng/ml

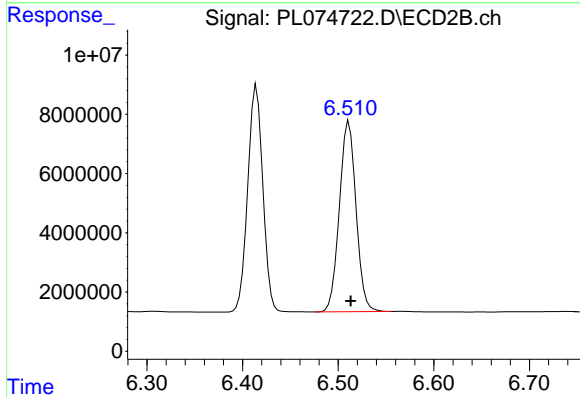


#4 Heptachlor
 R.T.: 6.187 min
 Delta R.T.: -0.002 min
 Response: 80019521
 Conc: 52.72 ng/ml

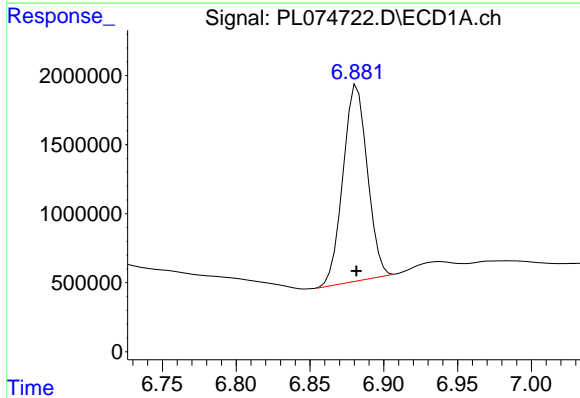


#5 Aldrin
 R.T.: 7.661 min
 Delta R.T.: 0.000 min
 Response: 33634396
 Conc: 54.29 ng/ml

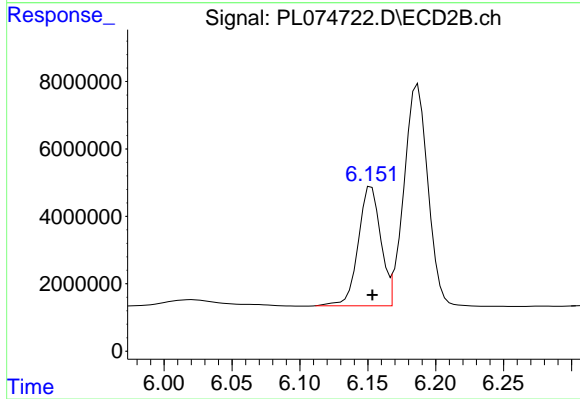
Instrument :
 ECD_L
 ClientSampleId :



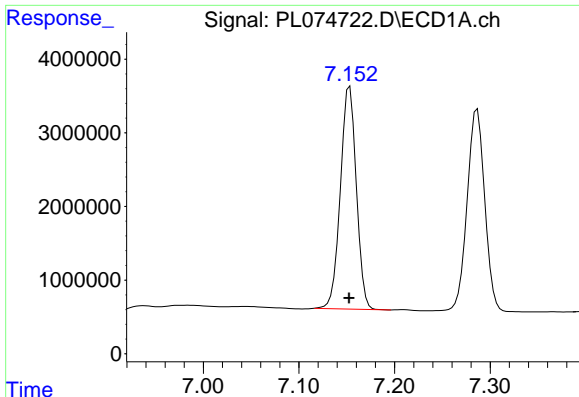
#5 Aldrin
 R.T.: 6.511 min
 Delta R.T.: -0.002 min
 Response: 78057779
 Conc: 52.02 ng/ml



#6 beta-BHC
 R.T.: 6.882 min
 Delta R.T.: 0.000 min
 Response: 16434397
 Conc: 55.07 ng/ml



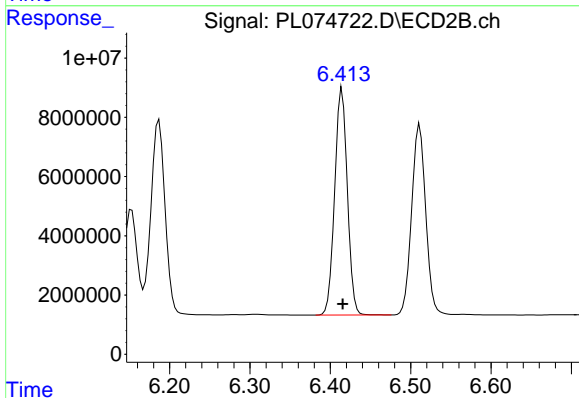
#6 beta-BHC
 R.T.: 6.153 min
 Delta R.T.: 0.000 min
 Response: 40647163
 Conc: 51.19 ng/ml



#7 delta-BHC

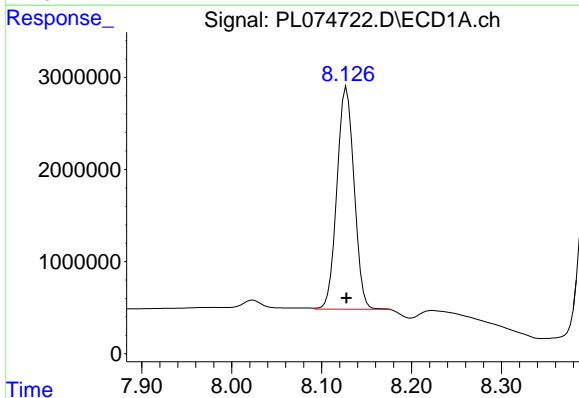
R.T.: 7.153 min
 Delta R.T.: 0.000 min
 Response: 35195394
 Conc: 56.13 ng/ml

Instrument :
 ECD_L
 ClientSampleId :



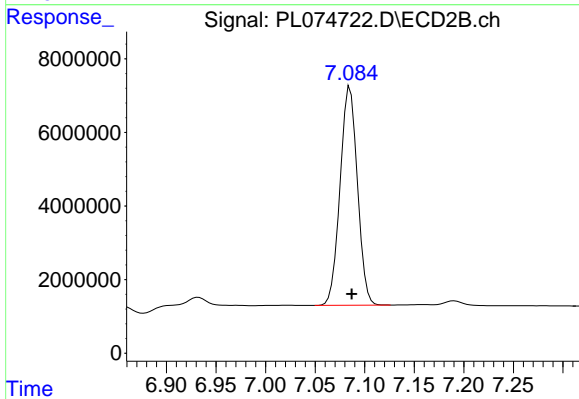
#7 delta-BHC

R.T.: 6.415 min
 Delta R.T.: 0.000 min
 Response: 83957197
 Conc: 53.69 ng/ml



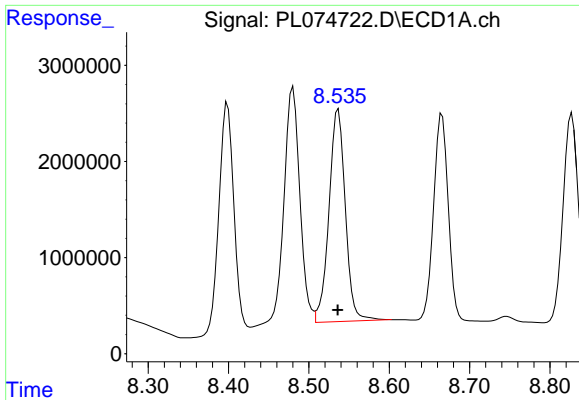
#8 Heptachlor epoxide

R.T.: 8.128 min
 Delta R.T.: 0.000 min
 Response: 31904410
 Conc: 56.10 ng/ml



#8 Heptachlor epoxide

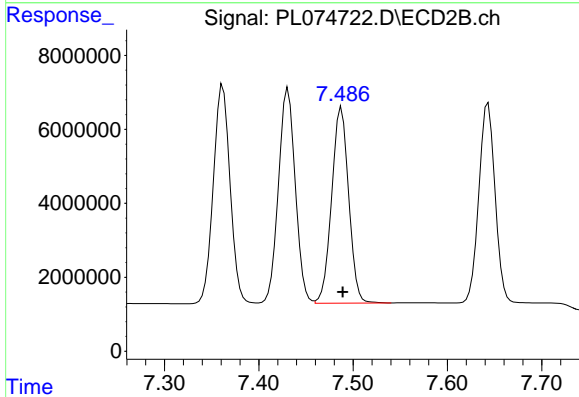
R.T.: 7.085 min
 Delta R.T.: -0.002 min
 Response: 72299519
 Conc: 51.95 ng/ml



#9 Endosulfan I

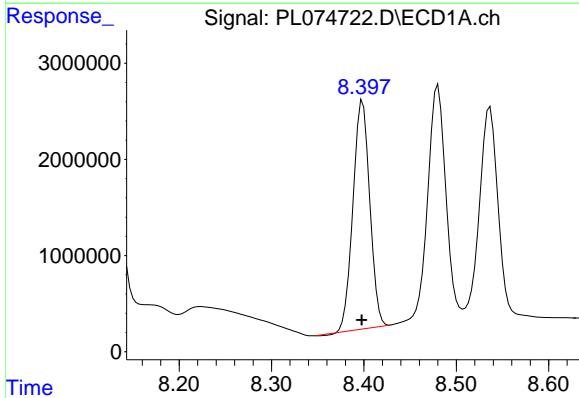
R.T.: 8.537 min
 Delta R.T.: 0.000 min
 Response: 31382636
 Conc: 54.44 ng/ml

Instrument :
 ECD_L
 ClientSampleId :



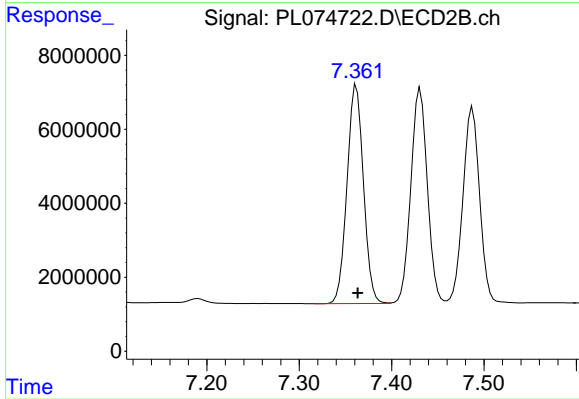
#9 Endosulfan I

R.T.: 7.488 min
 Delta R.T.: -0.001 min
 Response: 66413924
 Conc: 53.08 ng/ml



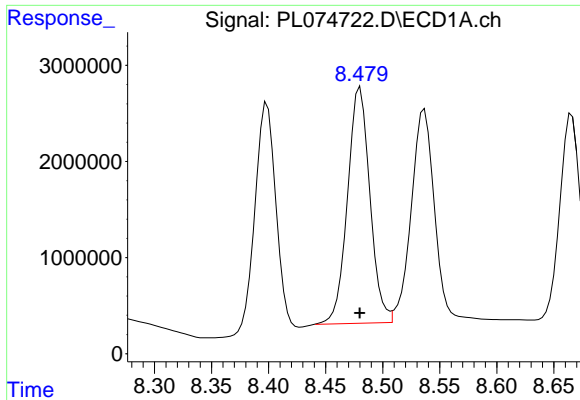
#10 gamma-Chlordane

R.T.: 8.399 min
 Delta R.T.: 0.000 min
 Response: 29911744
 Conc: 57.83 ng/ml



#10 gamma-Chlordane

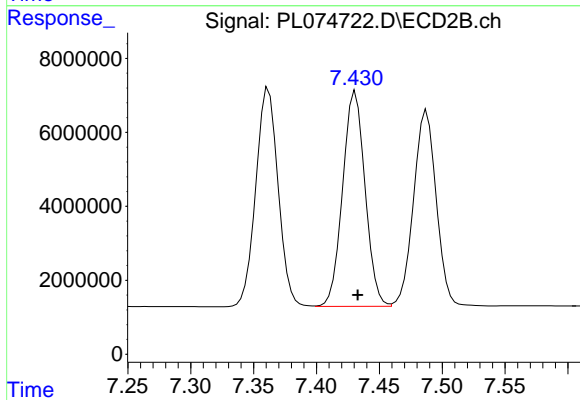
R.T.: 7.362 min
 Delta R.T.: -0.002 min
 Response: 73172424
 Conc: 52.80 ng/ml



#11 alpha-Chlordane

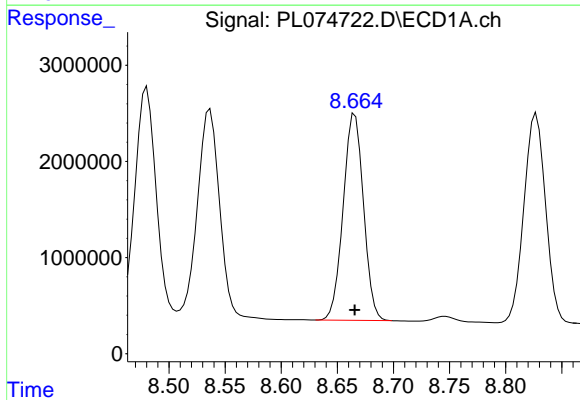
R.T.: 8.480 min
Delta R.T.: 0.000 min
Response: 33549865
Conc: 54.95 ng/ml

Instrument :
ECD_L
ClientSampleId :



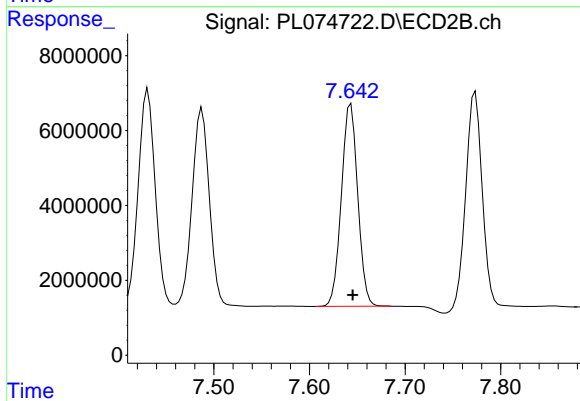
#11 alpha-Chlordane

R.T.: 7.431 min
Delta R.T.: -0.002 min
Response: 72253498
Conc: 53.45 ng/ml



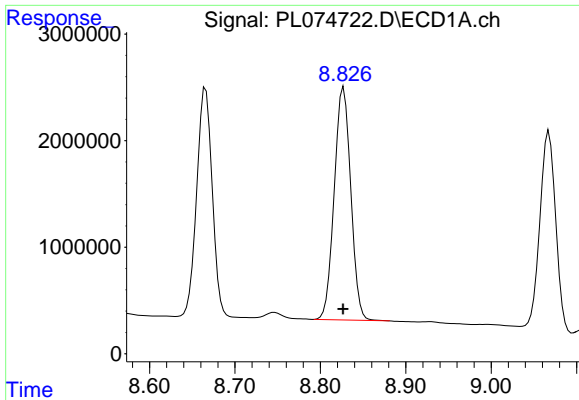
#12 4,4'-DDE

R.T.: 8.666 min
Delta R.T.: 0.000 min
Response: 27095359
Conc: 58.53 ng/ml



#12 4,4'-DDE

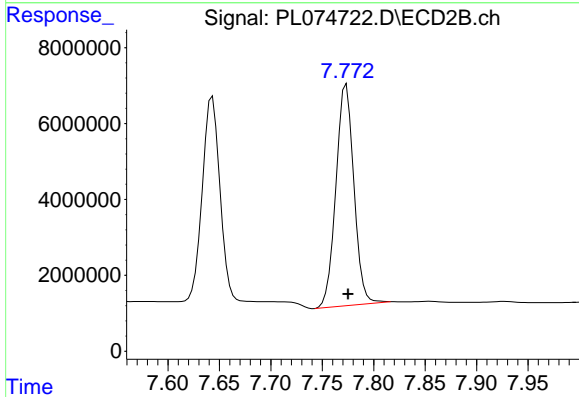
R.T.: 7.643 min
Delta R.T.: -0.002 min
Response: 64490149
Conc: 54.81 ng/ml



#13 Dieldrin

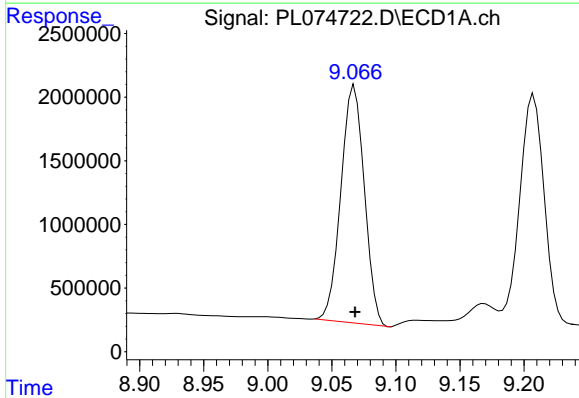
R.T.: 8.827 min
 Delta R.T.: 0.000 min
 Response: 29421595
 Conc: 55.98 ng/ml

Instrument :
 ECD_L
 ClientSampleId :



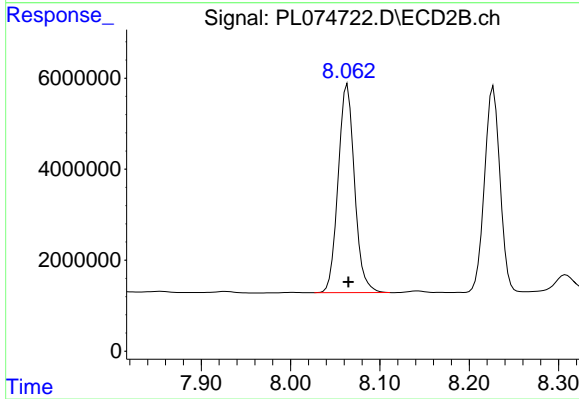
#13 Dieldrin

R.T.: 7.773 min
 Delta R.T.: -0.002 min
 Response: 71122669
 Conc: 55.83 ng/ml



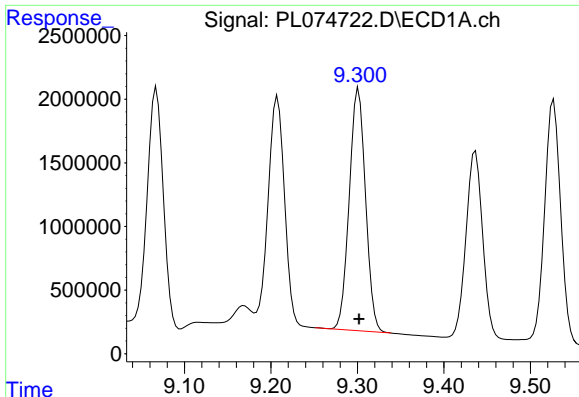
#14 Endrin

R.T.: 9.068 min
 Delta R.T.: 0.000 min
 Response: 23775660
 Conc: 57.62 ng/ml



#14 Endrin

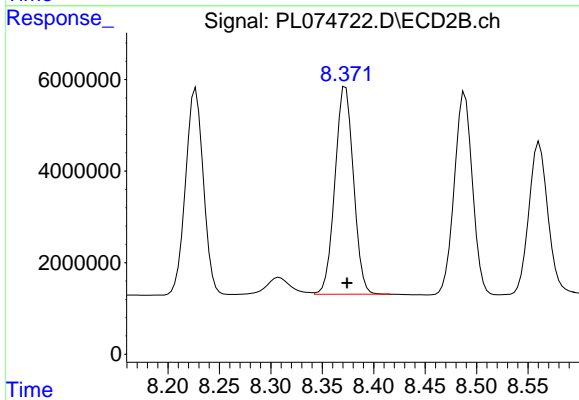
R.T.: 8.064 min
 Delta R.T.: -0.001 min
 Response: 58354372
 Conc: 55.24 ng/ml



#15 Endosulfan II

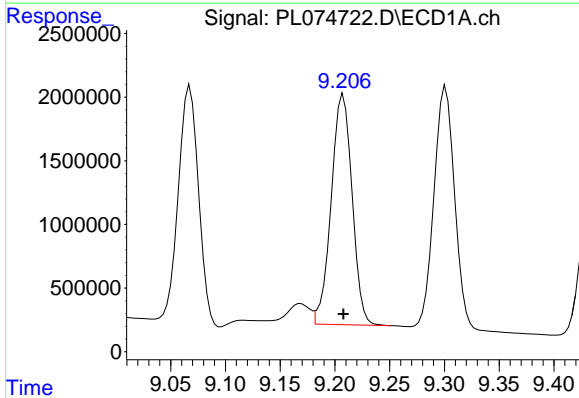
R.T.: 9.301 min
 Delta R.T.: 0.000 min
 Response: 24802882
 Conc: 56.42 ng/ml

Instrument :
 ECD_L
 ClientSampleId :



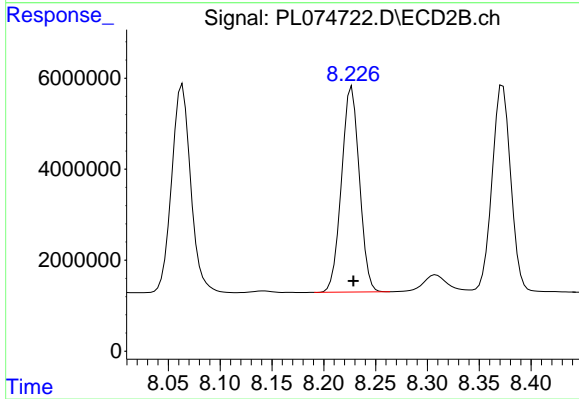
#15 Endosulfan II

R.T.: 8.373 min
 Delta R.T.: -0.001 min
 Response: 56874291
 Conc: 50.35 ng/ml



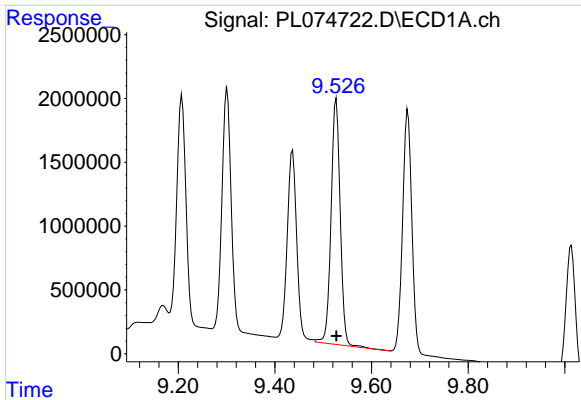
#16 4,4'-DDD

R.T.: 9.208 min
 Delta R.T.: 0.000 min
 Response: 24069548
 Conc: 53.24 ng/ml



#16 4,4'-DDD

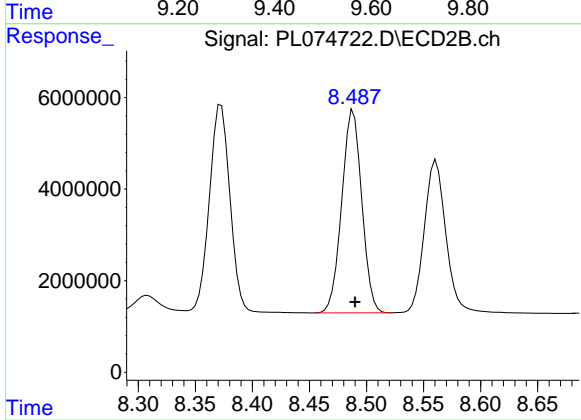
R.T.: 8.227 min
 Delta R.T.: -0.002 min
 Response: 54210715
 Conc: 55.03 ng/ml



#17 4,4'-DDT

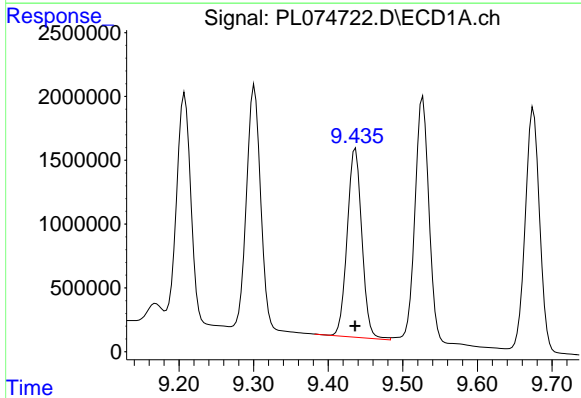
R.T.: 9.527 min
Delta R.T.: 0.000 min
Response: 25502581
Conc: 55.48 ng/ml

Instrument :
ECD_L
ClientSampleId :



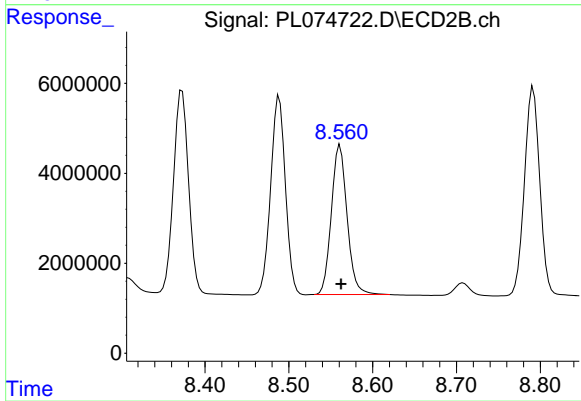
#17 4,4'-DDT

R.T.: 8.489 min
Delta R.T.: -0.001 min
Response: 54202473
Conc: 54.17 ng/ml



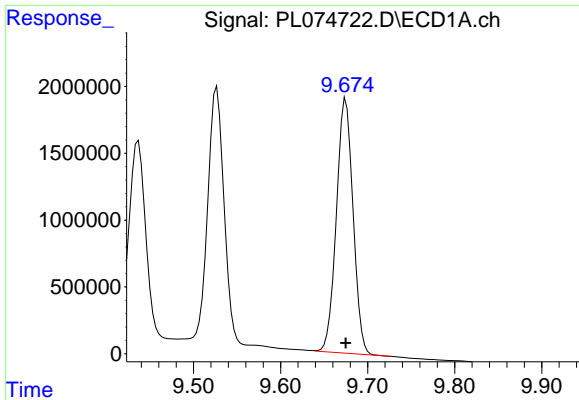
#18 Endrin aldehyde

R.T.: 9.437 min
Delta R.T.: 0.000 min
Response: 20192893
Conc: 57.06 ng/ml



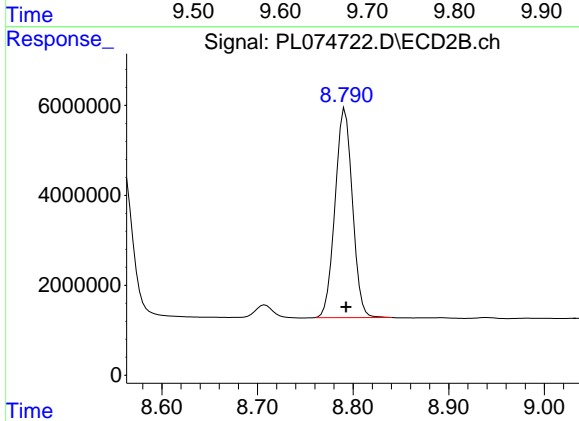
#18 Endrin aldehyde

R.T.: 8.561 min
Delta R.T.: -0.001 min
Response: 43332956
Conc: 54.26 ng/ml

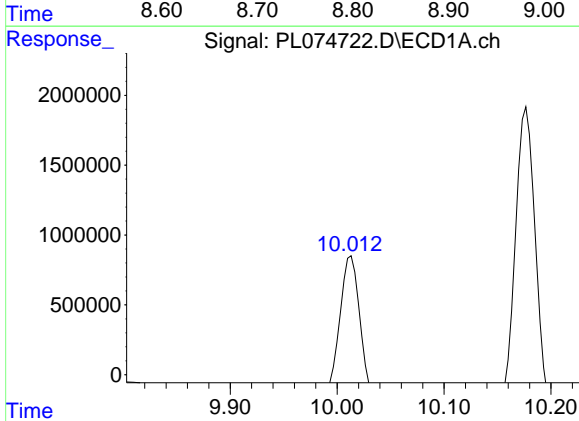


#19 Endosulfan Sulfate
 R.T.: 9.675 min
 Delta R.T.: 0.000 min
 Response: 25254472
 Conc: 55.88 ng/ml

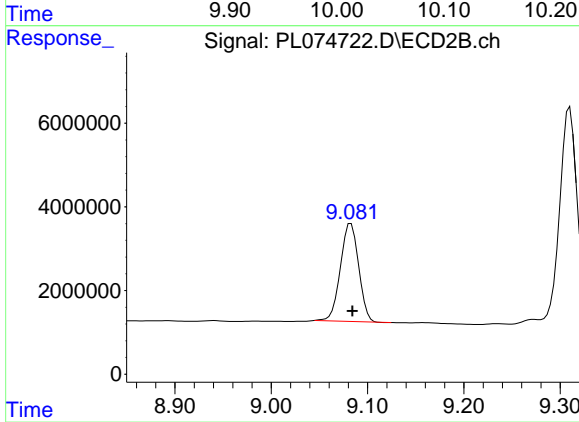
Instrument :
 ECD_L
 ClientSampleId :



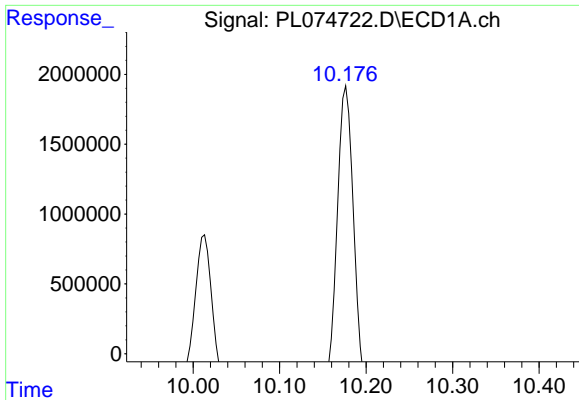
#19 Endosulfan Sulfate
 R.T.: 8.792 min
 Delta R.T.: 0.000 min
 Response: 58743749
 Conc: 53.97 ng/ml



#20 Methoxychlor
 R.T.: 10.013 min
 Delta R.T.: 0.000 min
 Response: 13561037
 Conc: 55.37 ng/ml



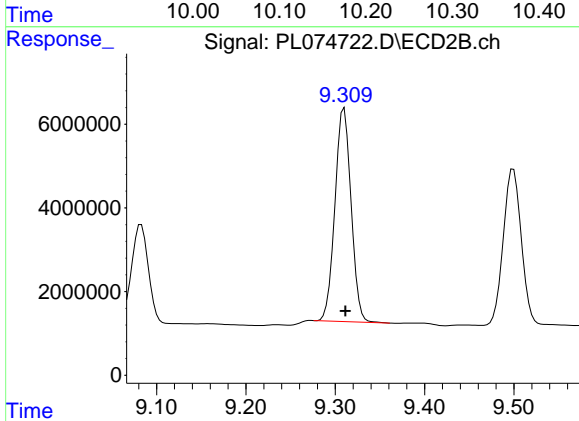
#20 Methoxychlor
 R.T.: 9.083 min
 Delta R.T.: -0.001 min
 Response: 30684049
 Conc: 52.51 ng/ml



#21 Endrin ketone

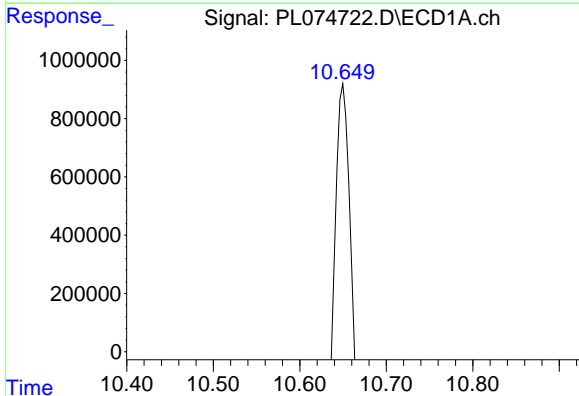
R.T.: 10.177 min
 Delta R.T.: 0.000 min
 Response: 28942110
 Conc: 56.44 ng/ml

Instrument :
 ECD_L
 ClientSampleId :



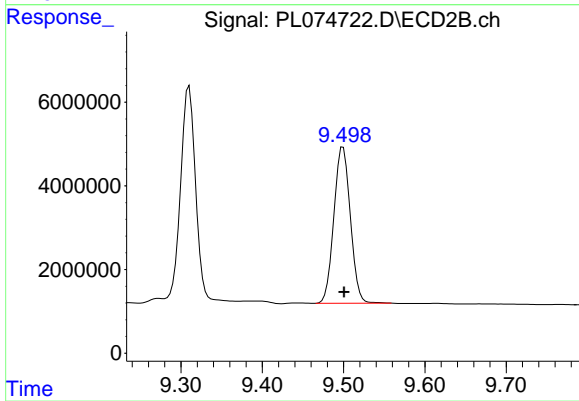
#21 Endrin ketone

R.T.: 9.310 min
 Delta R.T.: -0.001 min
 Response: 63965914
 Conc: 57.37 ng/ml



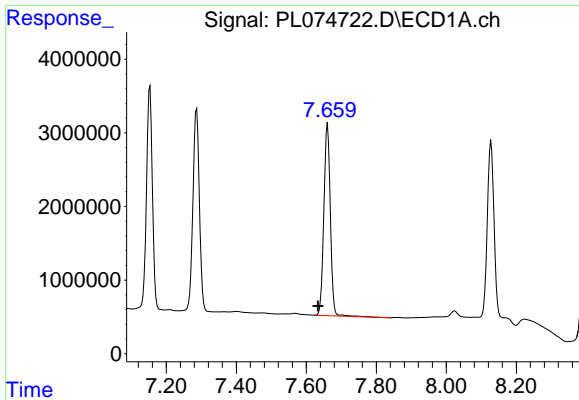
#22 Mirex

R.T.: 10.651 min
 Delta R.T.: -0.001 min
 Response: 22656905
 Conc: 56.15 ng/ml



#22 Mirex

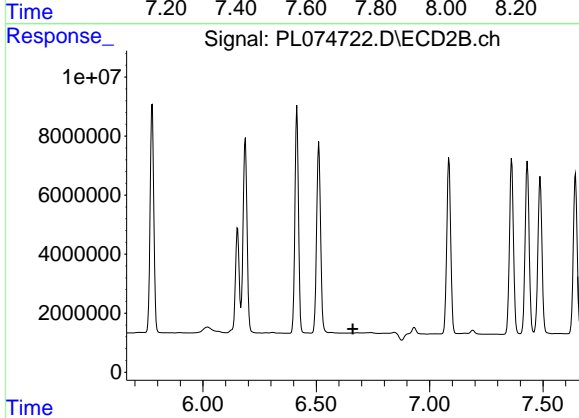
R.T.: 9.499 min
 Delta R.T.: -0.001 min
 Response: 52649982
 Conc: 54.36 ng/ml



#24 Chlordane-2

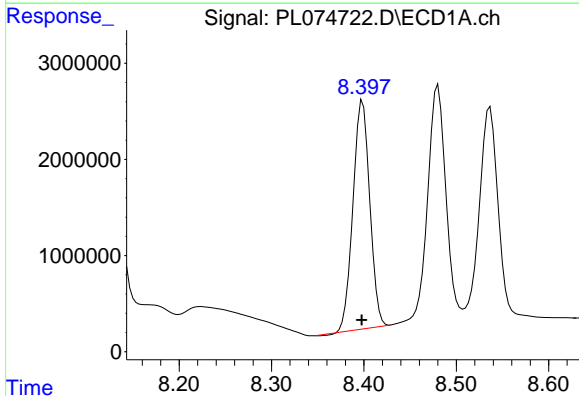
R.T.: 7.661 min
 Delta R.T.: 0.027 min
 Response: 33634396
 Conc: 1517.52 ng/m

Instrument :
 ECD_L
 ClientSampleId :



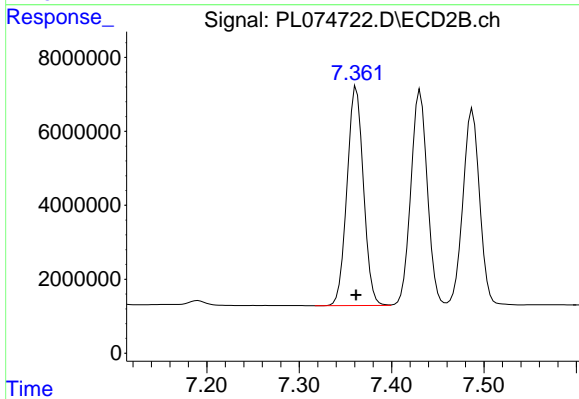
#24 Chlordane-2

R.T.: 0.000 min
 Exp R.T. : 6.662 min
 Response: 0
 Conc: N.D.



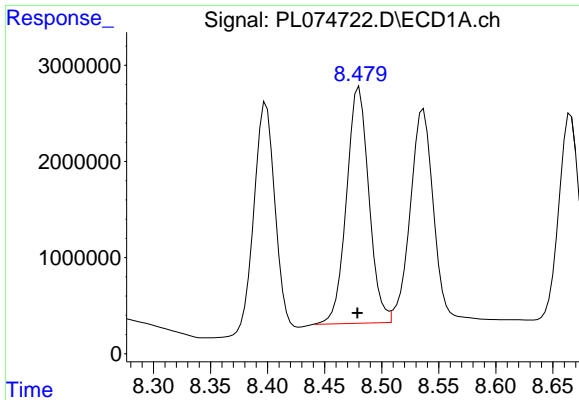
#25 Chlordane-3

R.T.: 8.399 min
 Delta R.T.: 0.001 min
 Response: 29911744
 Conc: 436.93 ng/ml



#25 Chlordane-3

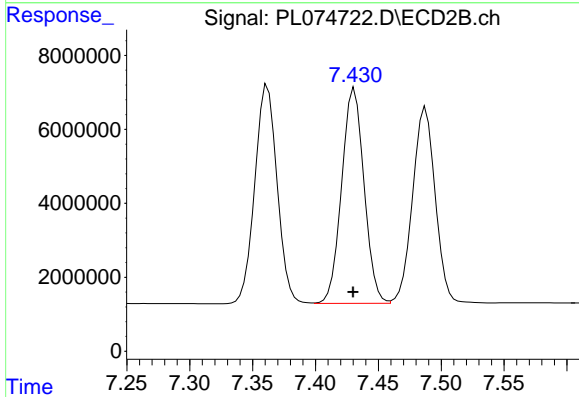
R.T.: 7.362 min
 Delta R.T.: 0.000 min
 Response: 73172424
 Conc: 563.78 ng/ml



#26 Chlordane-4

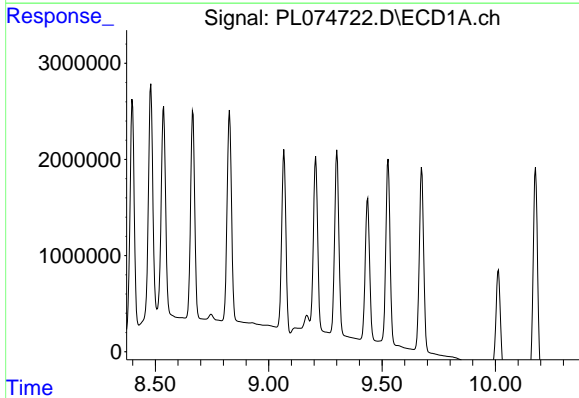
R.T.: 8.480 min
 Delta R.T.: 0.001 min
 Response: 33549865
 Conc: 348.24 ng/ml

Instrument :
 ECD_L
 ClientSampleId :



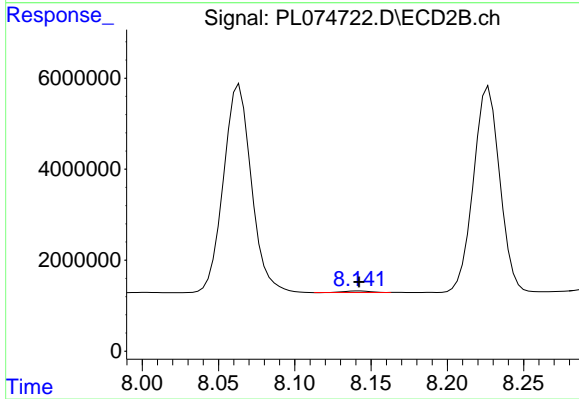
#26 Chlordane-4

R.T.: 7.431 min
 Delta R.T.: 0.001 min
 Response: 72253498
 Conc: 527.06 ng/ml



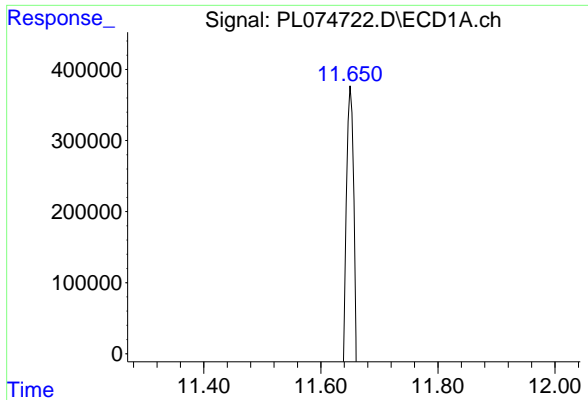
#27 Chlordane-5

R.T.: 0.000 min
 Exp R.T. : 9.371 min
 Response: 0
 Conc: N.D.



#27 Chlordane-5

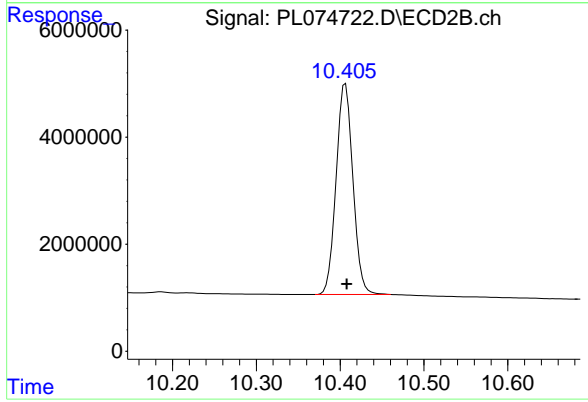
R.T.: 8.142 min
 Delta R.T.: 0.000 min
 Response: 396088
 Conc: 10.71 ng/ml



#28 Decachlorobiphenyl

R.T.: 11.651 min
Delta R.T.: 0.000 min
Response: 24584875
Conc: 55.05 ng/ml

Instrument :
ECD_L
ClientSampleId :



#28 Decachlorobiphenyl

R.T.: 10.406 min
Delta R.T.: -0.001 min
Response: 54857980
Conc: 53.45 ng/ml