

Data Path : Z:\pestpcbsrv\HPCHEM1\ECD_L\Data\PL051624\
 Data File : PL089561.D
 Signal(s) : Signal #1: ECD1A.ch Signal #2: ECD2B.ch
 Acq On : 17 May 2024 03:59
 Operator : AR\AJ
 Sample : P2487-01
 Misc :
 ALS Vial : 11 Sample Multiplier: 1

Instrument :
 ECD_L
ClientSampleId :
 WC-A-COMP

Manual Integrations
APPROVED

Reviewed By :Abdul Mirza 05/20/2024
 Supervised By :Ankita Jodhani 05/20/2024

Integration File signal 1: autoint1.e
 Integration File signal 2: autoint2.e
 Quant Time: May 17 12:41:45 2024
 Quant Method : Z:\pestpcbsrv\HPCHEM1\ECD_L\methods\PL042624.M
 Quant Title : GC Extractables
 QLast Update : Fri Apr 26 19:27:30 2024
 Response via : Initial Calibration
 Integrator: ChemStation

Volume Inj. : 1 µl
 Signal #1 Phase : ZB-MR2 Signal #2 Phase: ZB-MR1
 Signal #1 Info : 30M x 0.32mm x0.2 Signal #2 Info : 30M x 0.32mm x0.5µm

Compound	RT#1	RT#2	Resp#1	Resp#2	ng/ml	ng/ml

System Monitoring Compounds						
1) SA Tetrachlo...	3.550	2.796	40861081	26129942	20.292	20.366
28) SA Decachlor...	9.064	7.946	22945989	20796755	16.402	15.460
Target Compounds						
10) B gamma-Chl...	5.947	5.006	2502164	1717118	1.095m	1.046m
11) B alpha-Chl...	6.030	5.070	3470476	1387703	1.526m	0.841m#
16) A 4,4'-DDD	6.708	5.816	4217580	1122692	2.500m	0.910 #
17) MA 4,4'-DDT	7.032	6.066	11694818	7175899	6.359	5.304

(f)=RT Delta > 1/2 Window (#)=Amounts differ by > 25% (m)=manual int.

Data Path : Z:\pestpcbsrv\HPCHEM1\ECD_L\Data\PL051624\
 Data File : PL089561.D
 Signal(s) : Signal #1: ECD1A.ch Signal #2: ECD2B.ch
 Acq On : 17 May 2024 03:59
 Operator : AR\AJ
 Sample : P2487-01
 Misc :
 ALS Vial : 11 Sample Multiplier: 1

Instrument :

ECD_L

ClientSampleId :

WC-A-COMP

Manual Integrations

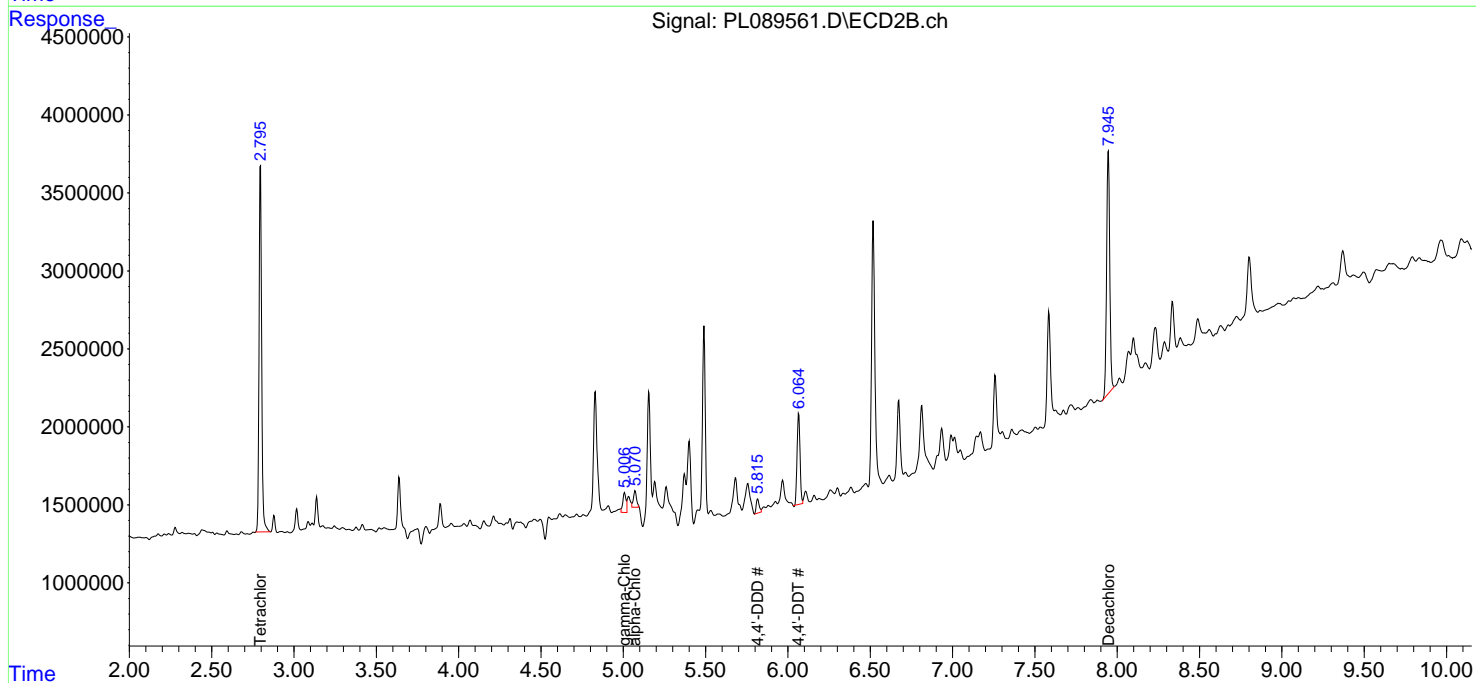
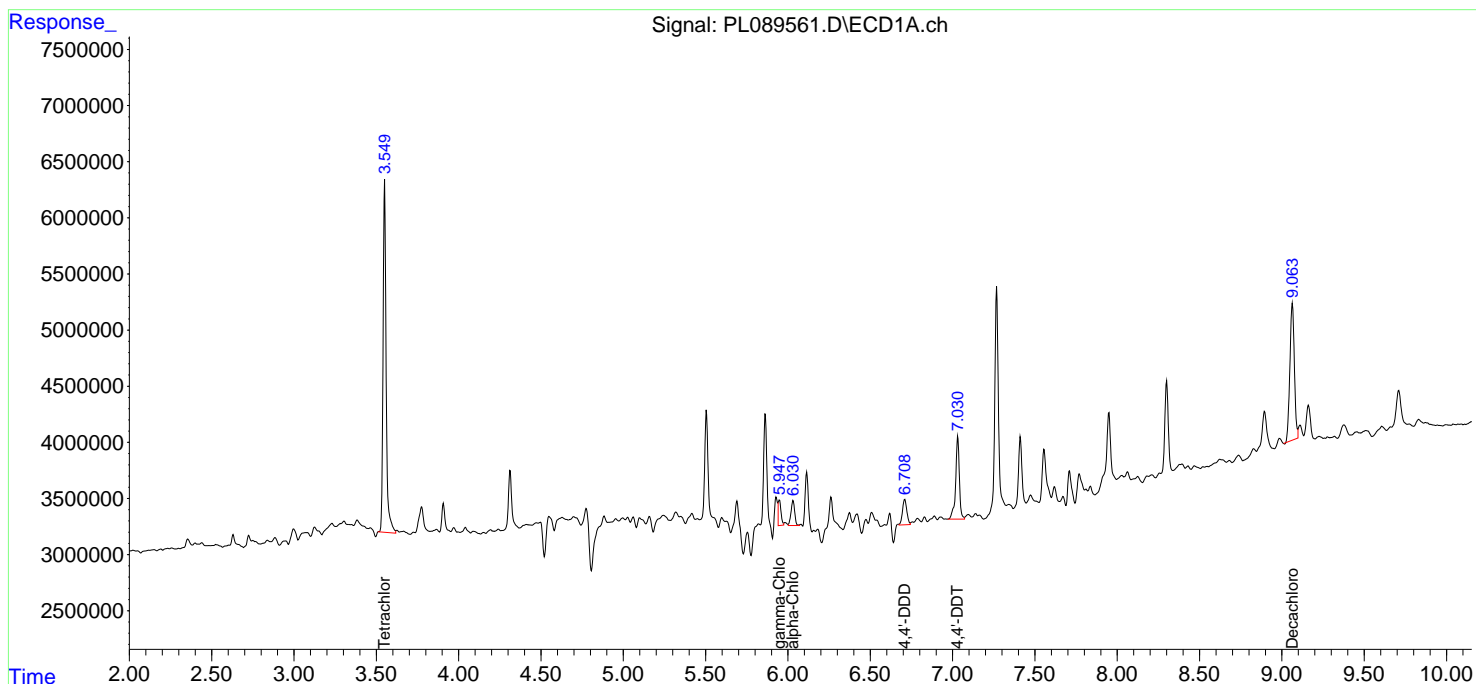
APPROVED

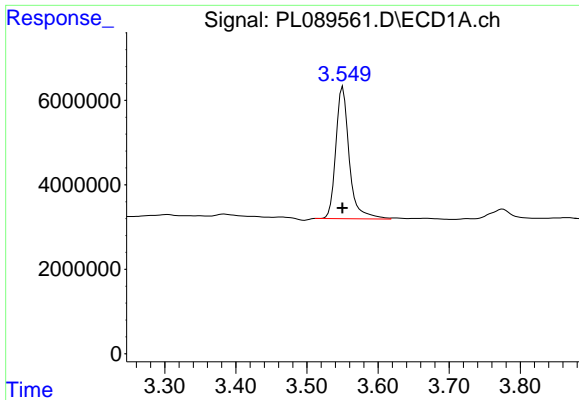
Reviewed By :Abdul Mirza 05/20/2024

Supervised By :Ankita Jodhani 05/20/2024

Integration File signal 1: autoint1.e
 Integration File signal 2: autoint2.e
 Quant Time: May 17 12:41:45 2024
 Quant Method : Z:\pestpcbsrv\HPCHEM1\ECD_L\methods\PL042624.M
 Quant Title : GC Extractables
 QLast Update : Fri Apr 26 19:27:30 2024
 Response via : Initial Calibration
 Integrator: ChemStation

Volume Inj. : 1 µl
 Signal #1 Phase : ZB-MR2 Signal #2 Phase: ZB-MR1
 Signal #1 Info : 30M x 0.32mm x0.2 Signal #2 Info : 30M x 0.32mm x0.5µm

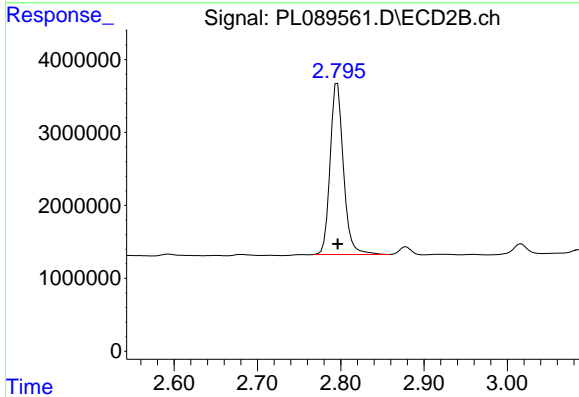




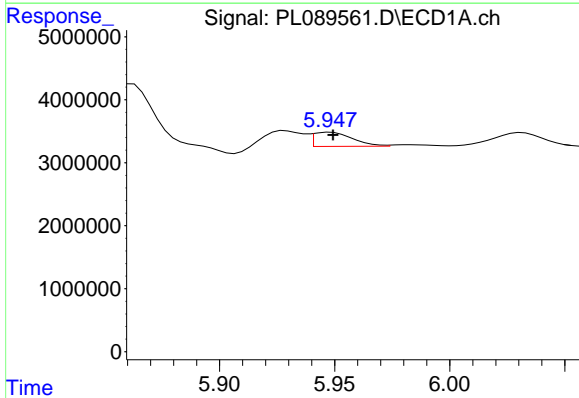
#1 Tetrachloro-m-xylene
 R.T.: 3.550 min
 Delta R.T.: 0.000 min
 Response: 40861081
 Conc: 20.29 ng/ml

Instrument :
 ECD_L
 ClientSampleId :
 WC-A-COMP

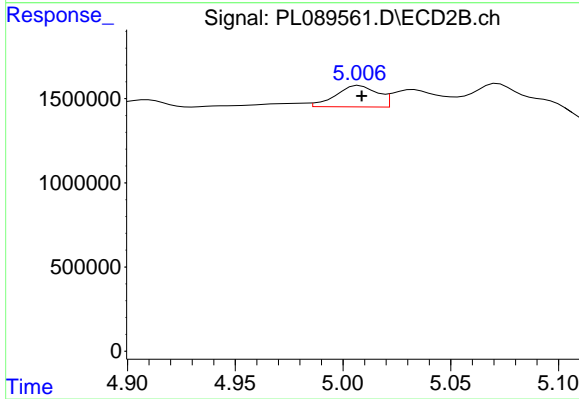
Manual Integrations
APPROVED
 Reviewed By :Abdul Mirza 05/20/2024
 Supervised By :Ankita Jodhani 05/20/2024



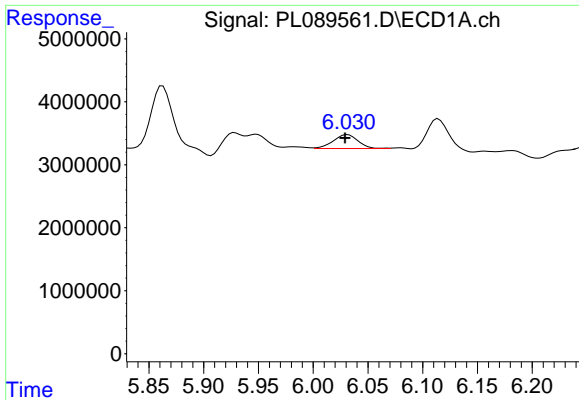
#1 Tetrachloro-m-xylene
 R.T.: 2.796 min
 Delta R.T.: 0.000 min
 Response: 26129942
 Conc: 20.37 ng/ml



#10 gamma-Chlordane
 R.T.: 5.947 min
 Delta R.T.: -0.002 min
 Response: 2502164
 Conc: 1.09 ng/ml m



#10 gamma-Chlordane
 R.T.: 5.006 min
 Delta R.T.: -0.002 min
 Response: 1717118
 Conc: 1.05 ng/ml m



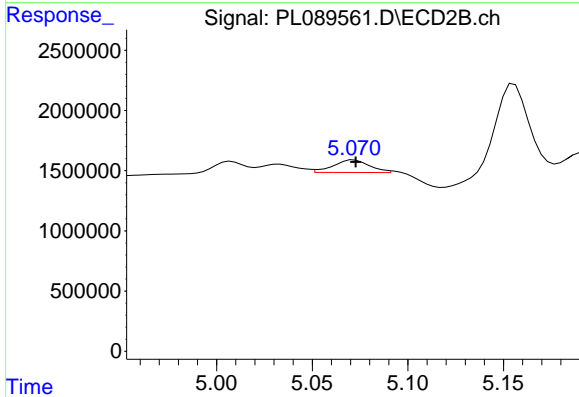
#11 alpha-Chlordane

R.T.: 6.030 min
 Delta R.T.: 0.001 min
 Response: 3470476
 Conc: 1.53 ng/ml

Instrument :
 ECD_L
 ClientSampleId :
 WC-A-COMP

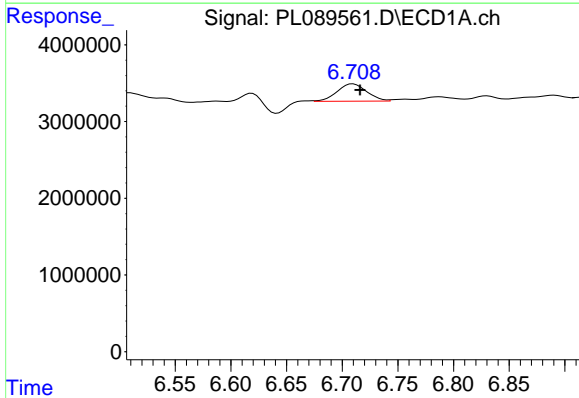
Manual Integrations
 APPROVED

Reviewed By :Abdul Mirza 05/20/2024
 Supervised By :Ankita Jodhani 05/20/2024



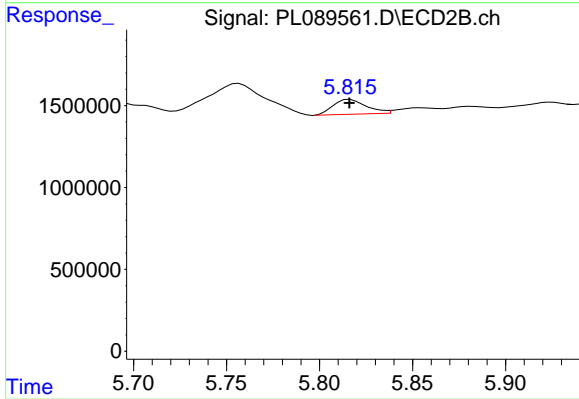
#11 alpha-Chlordane

R.T.: 5.070 min
 Delta R.T.: -0.002 min
 Response: 1387703
 Conc: 0.84 ng/ml m



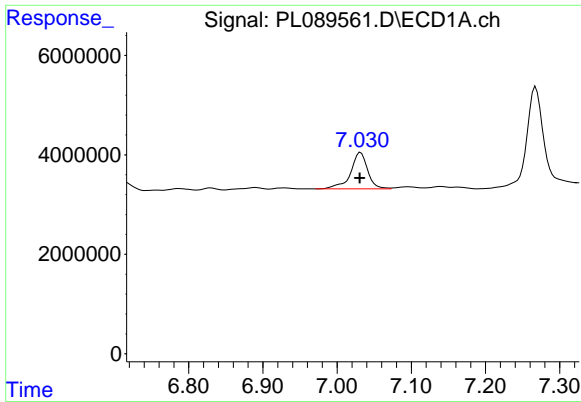
#16 4,4'-DDD

R.T.: 6.708 min
 Delta R.T.: -0.008 min
 Response: 4217580
 Conc: 2.50 ng/ml m



#16 4,4'-DDD

R.T.: 5.816 min
 Delta R.T.: 0.000 min
 Response: 1122692
 Conc: 0.91 ng/ml



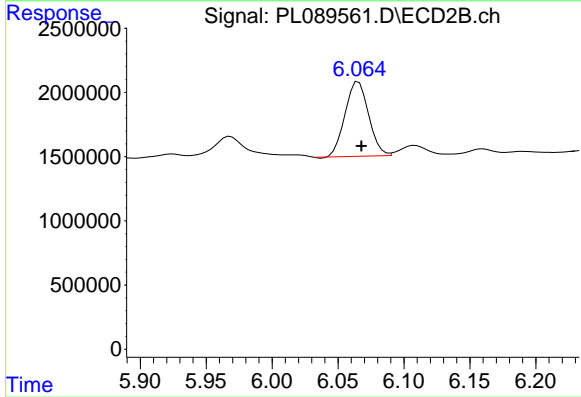
#17 4,4'-DDT

R.T.: 7.032 min
 Delta R.T.: 0.001 min
 Response: 11694818
 Conc: 6.36 ng/ml

Instrument :
 ECD_L
 ClientSampleId :
 WC-A-COMP

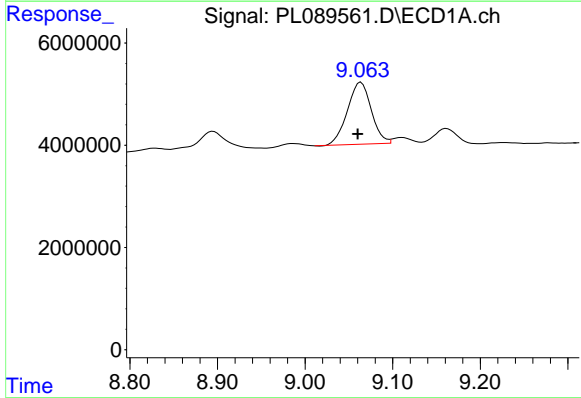
Manual Integrations
 APPROVED

Reviewed By :Abdul Mirza 05/20/2024
 Supervised By :Ankita Jodhani 05/20/2024



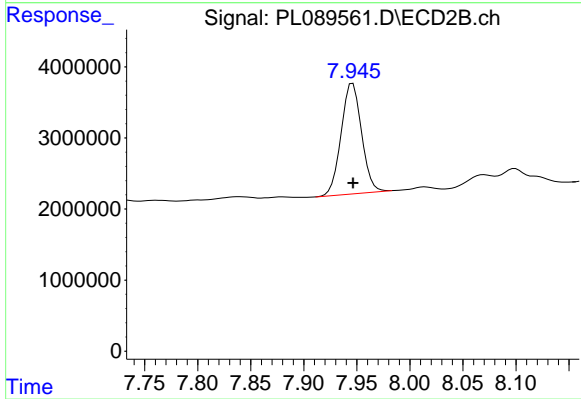
#17 4,4'-DDT

R.T.: 6.066 min
 Delta R.T.: -0.002 min
 Response: 7175899
 Conc: 5.30 ng/ml



#28 Decachlorobiphenyl

R.T.: 9.064 min
 Delta R.T.: 0.004 min
 Response: 22945989
 Conc: 16.40 ng/ml



#28 Decachlorobiphenyl

R.T.: 7.946 min
 Delta R.T.: 0.000 min
 Response: 20796755
 Conc: 15.46 ng/ml