

Data Path : Z:\pestpcbsrv\HPCHEM1\ECD_L\Data\PL051819\
 Data File : PL048673.D
 Signal(s) : Signal #1: ECD1A.ch Signal #2: ECD2B.ch
 Acq On : 17 May 2019 20:24
 Operator : SM\AJ
 Sample : K2865-12
 Misc :
 ALS Vial : 41 Sample Multiplier: 1

Instrument :
 ECD_L
 ClientSampleID :
 TP-22-D

Integration File signal 1: autoint1.e
 Integration File signal 2: autoint2.e
 Quant Time: May 17 23:21:36 2019
 Quant Method : Z:\pestpcbsrv\HPCHEM1\ECD_L\methods\PL050119.M
 Quant Title : GC Extractables
 QLast Update : Thu May 02 09:36:55 2019
 Response via : Initial Calibration
 Integrator: ChemStation

Volume Inj. : 1 µl
 Signal #1 Phase : ZB-MR2 Signal #2 Phase: ZB-MR1
 Signal #1 Info : 30M x 0.32mm x0.2 Signal #2 Info : 30M x 0.32mm x0.5µm

Compound	RT#1	RT#2	Resp#1	Resp#2	ng/ml	ng/ml

System Monitoring Compounds						
1) SA Tetrachlo...	3.327	3.939	183.5E6	52353305	18.945	21.018
28) SA Decachlor...	7.997	8.978	129.1E6	36907513	12.839	13.905
Target Compounds						
7) B delta-BHC	0.000	4.975f	0	10560433	N.D.	3.734 #

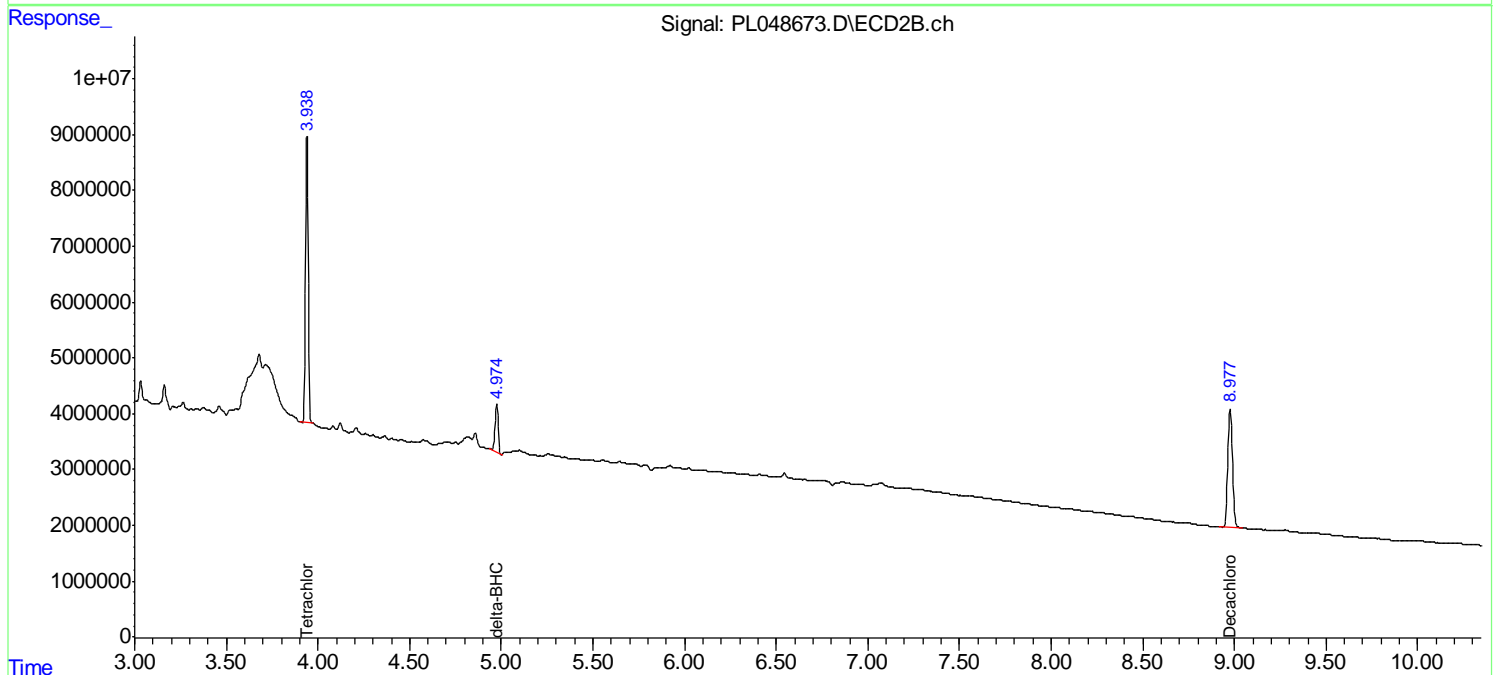
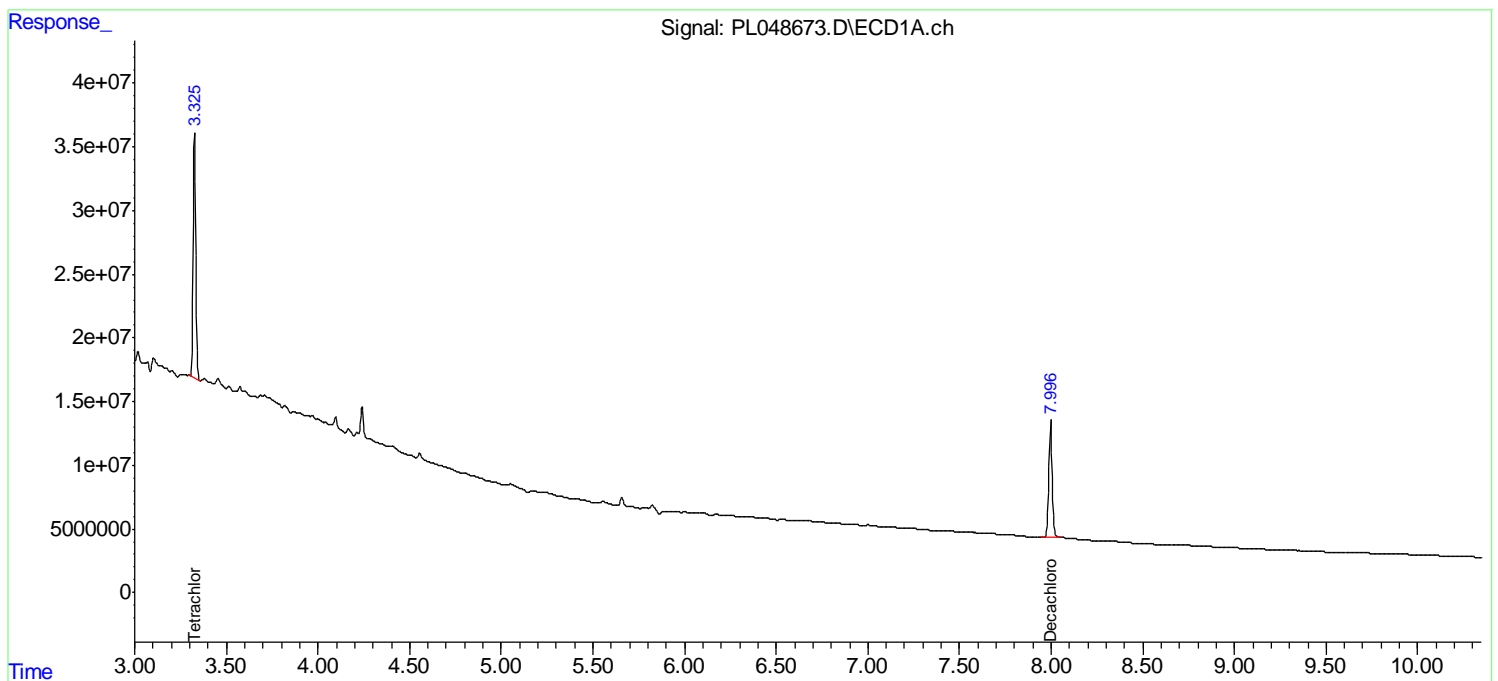
(f)=RT Delta > 1/2 Window (#)=Amounts differ by > 25% (m)=manual int.

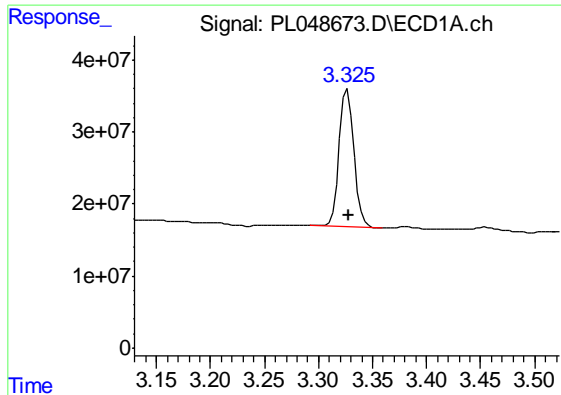
Data Path : Z:\pestpcbsrv\HPCHEM1\ECD_L\Data\PL051819\
 Data File : PL048673.D
 Signal(s) : Signal #1: ECD1A.ch Signal #2: ECD2B.ch
 Acq On : 17 May 2019 20:24
 Operator : SM\AJ
 Sample : K2865-12
 Misc :
 ALS Vial : 41 Sample Multiplier: 1

Instrument :
 ECD_L
 ClientSampleID :
 TP-22-D

Integration File signal 1: autoint1.e
 Integration File signal 2: autoint2.e
 Quant Time: May 17 23:21:36 2019
 Quant Method : Z:\pestpcbsrv\HPCHEM1\ECD_L\methods\PL050119.M
 Quant Title : GC Extractables
 QLast Update : Thu May 02 09:36:55 2019
 Response via : Initial Calibration
 Integrator: ChemStation

Volume Inj. : 1 µl
 Signal #1 Phase : ZB-MR2 Signal #2 Phase: ZB-MR1
 Signal #1 Info : 30M x 0.32mm x0.2 Signal #2 Info : 30M x 0.32mm x0.5µm

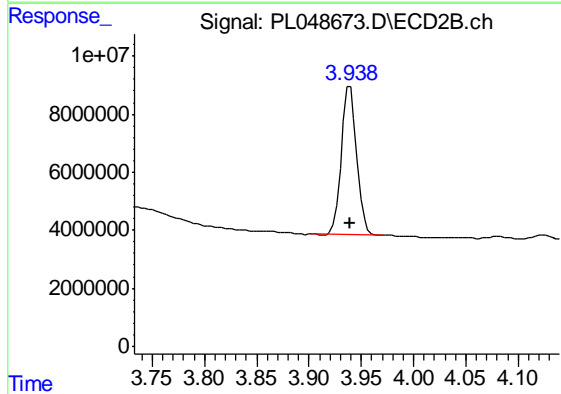




#1 Tetrachloro-m-xylene

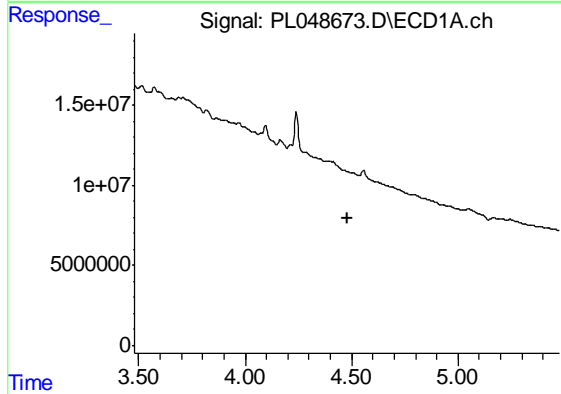
R.T.: 3.327 min
 Delta R.T.: -0.001 min
 Response: 183513036
 Conc: 18.94 ng/ml

Instrument :
 ECD_L
 ClientSampleId :
 TP-22-D



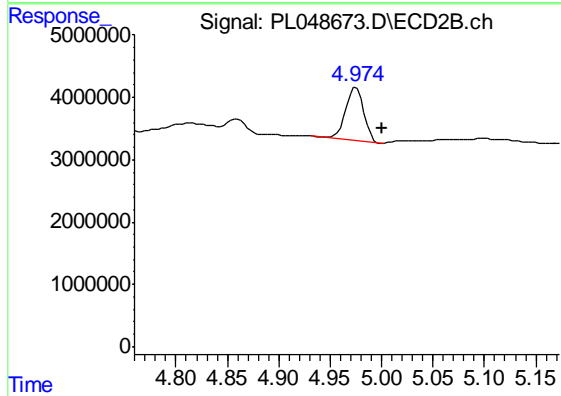
#1 Tetrachloro-m-xylene

R.T.: 3.939 min
 Delta R.T.: 0.000 min
 Response: 52353305
 Conc: 21.02 ng/ml



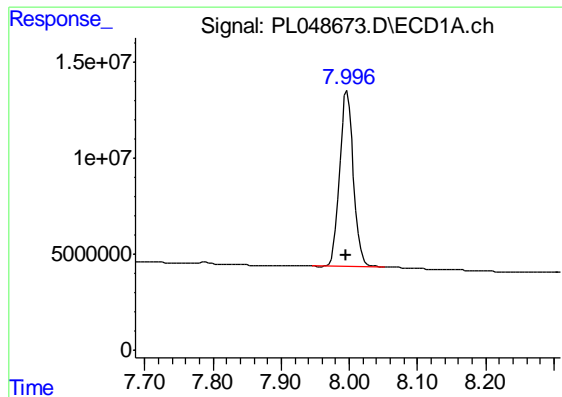
#7 delta-BHC

R.T.: 0.000 min
 Exp R.T. : 4.479 min
 Response: 0
 Conc: N.D.



#7 delta-BHC

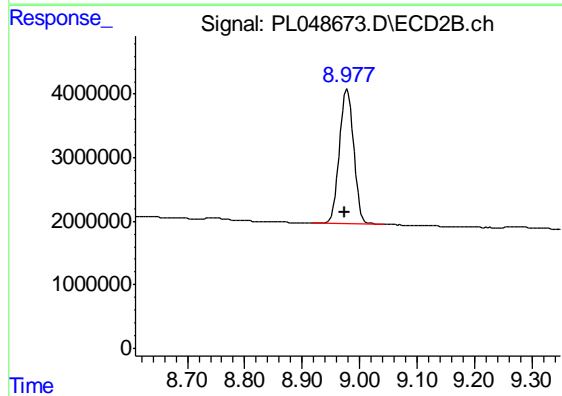
R.T.: 4.975 min
 Delta R.T.: -0.025 min
 Response: 10560433
 Conc: 3.73 ng/ml



#28 Decachlorobiphenyl

R.T.: 7.997 min
Delta R.T.: 0.001 min
Response: 129089812
Conc: 12.84 ng/ml

Instrument :
ECD_L
ClientSampleId :
TP-22-D



#28 Decachlorobiphenyl

R.T.: 8.978 min
Delta R.T.: 0.003 min
Response: 36907513
Conc: 13.90 ng/ml