

Data Path : Z:\pestpcbsrv\HPCHEM1\ECD\_L\Data\PL051819\  
 Data File : PL048688.D  
 Signal(s) : Signal #1: ECD1A.ch Signal #2: ECD2B.ch  
 Acq On : 18 May 2019 00:56  
 Operator : SM\AJ  
 Sample : K2896-07  
 Misc :  
 ALS Vial : 53 Sample Multiplier: 1

Instrument :  
 ECD\_L  
 ClientSampleId :  
 TP-20-S

Integration File signal 1: autoint1.e  
 Integration File signal 2: autoint2.e  
 Quant Time: May 18 01:30:35 2019  
 Quant Method : Z:\pestpcbsrv\HPCHEM1\ECD\_L\methods\PL050119.M  
 Quant Title : GC Extractables  
 QLast Update : Thu May 02 09:36:55 2019  
 Response via : Initial Calibration  
 Integrator: ChemStation

Volume Inj. : 1 µl  
 Signal #1 Phase : ZB-MR2 Signal #2 Phase: ZB-MR1  
 Signal #1 Info : 30M x 0.32mm x0.2 Signal #2 Info : 30M x 0.32mm x0.5µm

| Compound                    | RT#1   | RT#2  | Resp#1   | Resp#2   | ng/ml | ng/ml  |
|-----------------------------|--------|-------|----------|----------|-------|--------|
| -----                       |        |       |          |          |       |        |
| System Monitoring Compounds |        |       |          |          |       |        |
| 1) SA Tetrachlo...          | 3.327  | 3.939 | 59335560 | 16600969 | 6.125 | 6.665  |
| 28) SA Decachlor...         | 7.995  | 8.976 | 48699599 | 15790015 | 4.844 | 5.949  |
| Target Compounds            |        |       |          |          |       |        |
| 20) A Methoxychlor          | 6.707f | 0.000 | 10300674 | 0        | 1.892 | N.D. # |
| -----                       |        |       |          |          |       |        |

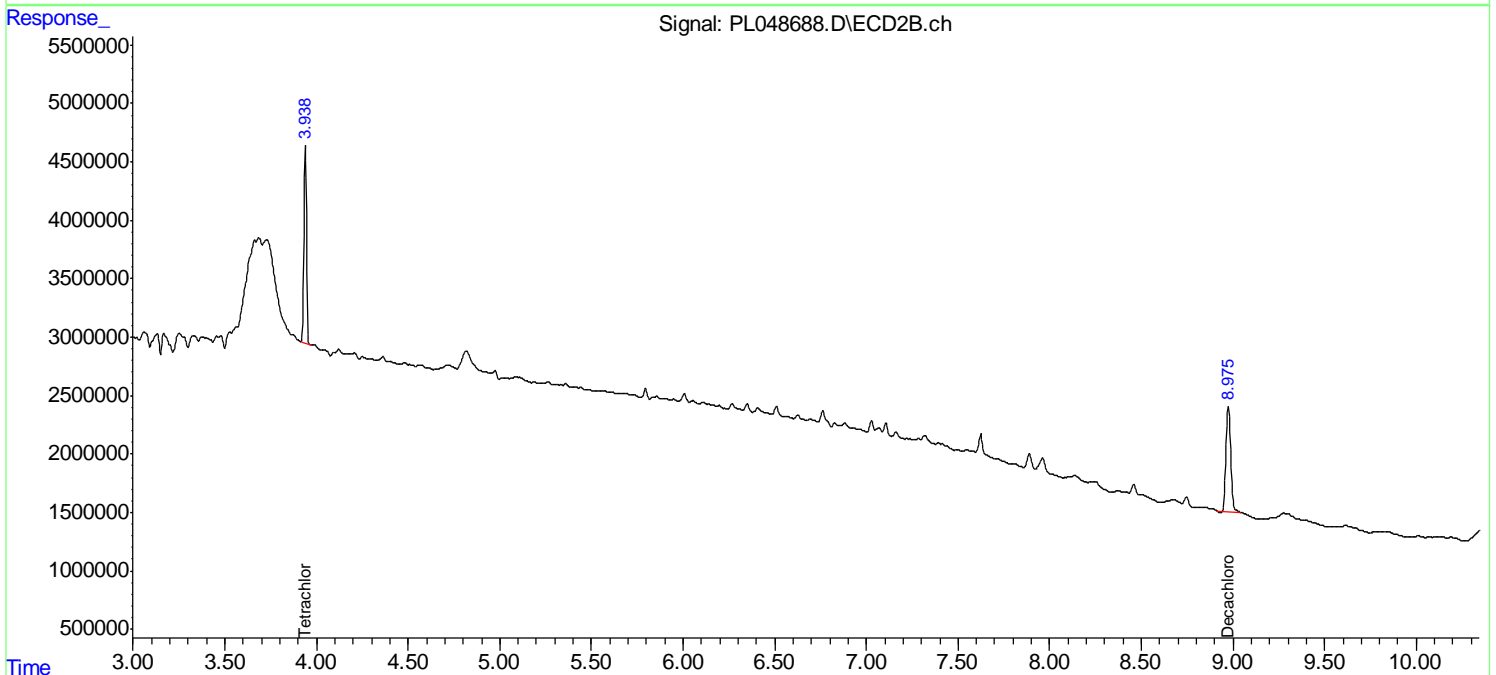
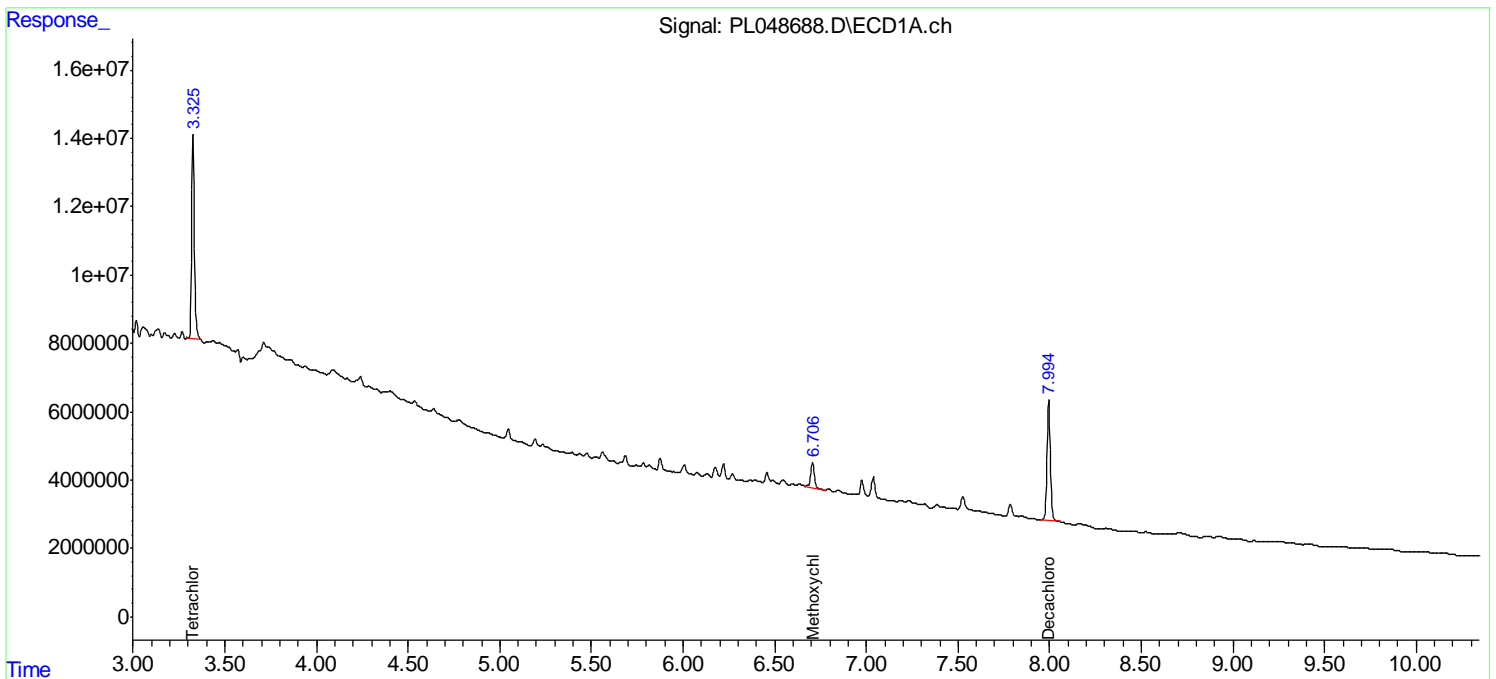
(f)=RT Delta > 1/2 Window (#)=Amounts differ by > 25% (m)=manual int.

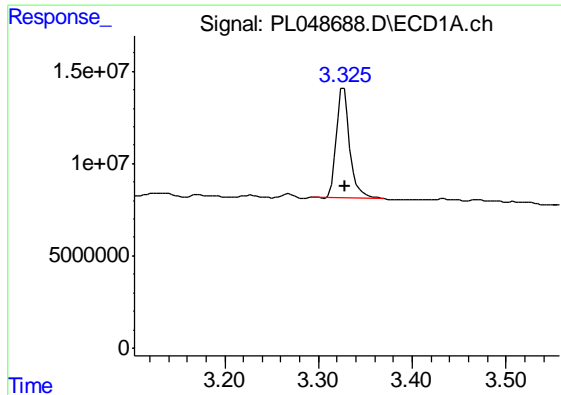
Data Path : Z:\pestpcbsrv\HPCHEM1\ECD\_L\Data\PL051819\  
 Data File : PL048688.D  
 Signal(s) : Signal #1: ECD1A.ch Signal #2: ECD2B.ch  
 Acq On : 18 May 2019 00:56  
 Operator : SM\AJ  
 Sample : K2896-07  
 Misc :  
 ALS Vial : 53 Sample Multiplier: 1

Instrument :  
 ECD\_L  
 ClientSampleId :  
 TP-20-S

Integration File signal 1: autoint1.e  
 Integration File signal 2: autoint2.e  
 Quant Time: May 18 01:30:35 2019  
 Quant Method : Z:\pestpcbsrv\HPCHEM1\ECD\_L\methods\PL050119.M  
 Quant Title : GC Extractables  
 QLast Update : Thu May 02 09:36:55 2019  
 Response via : Initial Calibration  
 Integrator: ChemStation

Volume Inj. : 1 µl  
 Signal #1 Phase : ZB-MR2 Signal #2 Phase: ZB-MR1  
 Signal #1 Info : 30M x 0.32mm x0.2 Signal #2 Info : 30M x 0.32mm x0.5µm

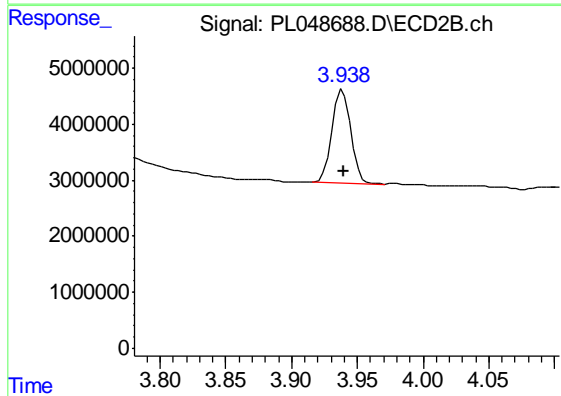




#1 Tetrachloro-m-xylene

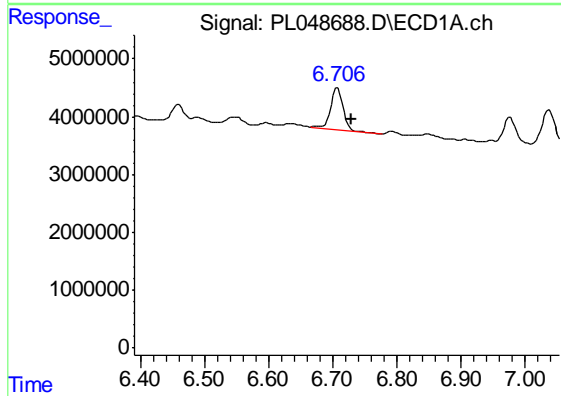
R.T.: 3.327 min  
 Delta R.T.: -0.001 min  
 Response: 59335560  
 Conc: 6.13 ng/ml

Instrument :  
 ECD\_L  
 ClientSampleId :  
 TP-20-S



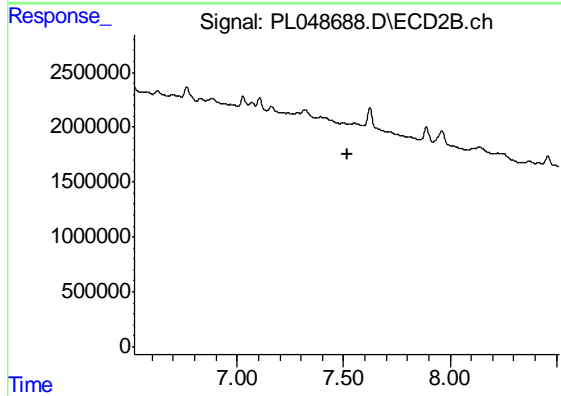
#1 Tetrachloro-m-xylene

R.T.: 3.939 min  
 Delta R.T.: 0.000 min  
 Response: 16600969  
 Conc: 6.66 ng/ml



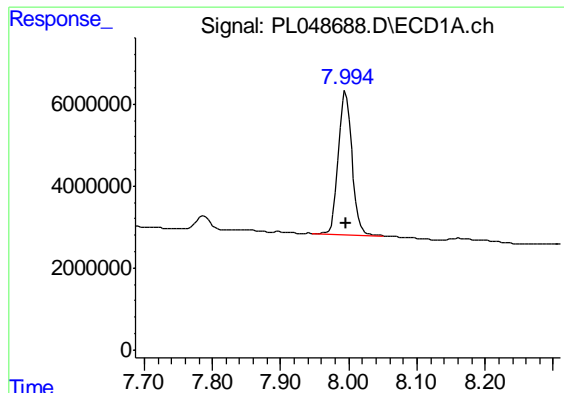
#20 Methoxychlor

R.T.: 6.707 min  
 Delta R.T.: -0.022 min  
 Response: 10300674  
 Conc: 1.89 ng/ml



#20 Methoxychlor

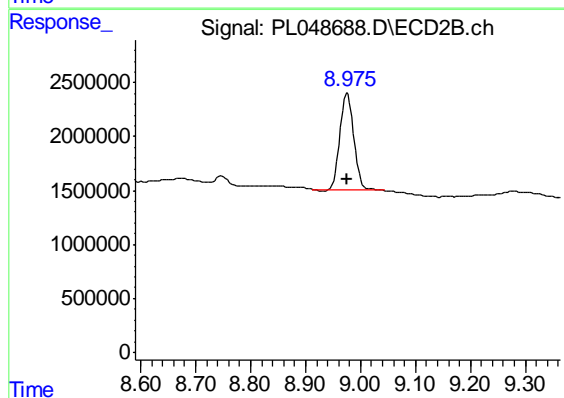
R.T.: 0.000 min  
 Exp R.T. : 7.516 min  
 Response: 0  
 Conc: N.D.



#28 Decachlorobiphenyl

R.T.: 7.995 min  
Delta R.T.: 0.000 min  
Response: 48699599  
Conc: 4.84 ng/ml

Instrument :  
ECD\_L  
ClientSampleId :  
TP-20-S



#28 Decachlorobiphenyl

R.T.: 8.976 min  
Delta R.T.: 0.001 min  
Response: 15790015  
Conc: 5.95 ng/ml