

Data Path : Z:\pestpcbsrv\HPCHEM1\ECD_L\Data\PL051822\
 Data File : PL074792.D
 Signal(s) : Signal #1: ECD1A.ch Signal #2: ECD2B.ch
 Acq On : 18 May 2022 16:50
 Operator : AR\AJ
 Sample : N2863-03MS
 Misc :
 ALS Vial : 18 Sample Multiplier: 1

Instrument :
 ECD_L
 ClientSampleId :

Integration File signal 1: autoint1.e
 Integration File signal 2: autoint2.e
 Quant Time: May 19 03:14:08 2022
 Quant Method : Z:\pestpcbsrv\HPCHEM1\ECD_L\methods\PL051122.M
 Quant Title : GC Extractables
 QLast Update : Sat May 14 02:37:15 2022
 Response via : Initial Calibration
 Integrator: ChemStation

Volume Inj. : 1 µl
 Signal #1 Phase : ZB-MR2 Signal #2 Phase: ZB-MR1
 Signal #1 Info : 30M x 0.32mm x0.2 Signal #2 Info : 30M x 0.32mm x0.5µm

Compound	RT#1	RT#2	Resp#1	Resp#2	ng/ml	ng/ml

System Monitoring Compounds						
1) SA Tetrachlo...	5.646	4.650	10565918	28172267	20.810	20.526
28) SA Decachlor...	11.645	10.403	8832291	23233502	19.777	22.636
Target Compounds						
2) A alpha-BHC	6.230	5.353	45290941	119.2E6	66.201	70.858
3) MA gamma-BHC...	6.629	5.774	42604179	113.3E6	66.002	68.548
4) MA Heptachlor	7.284	6.184	42108666	106.9E6	65.247	70.407
5) MB Aldrin	7.658	6.508	40561477	107.7E6	65.477	71.770
6) B beta-BHC	6.879	6.151	18481837	48978116	61.925	61.688
7) B delta-BHC	7.150	6.412	39993047	107.3E6	63.780	68.639
8) B Heptachlo...	8.125	7.082	39114592	97031656	68.773	69.718
9) A Endosulfan I	8.534	7.484	35986012	87047465	62.422	69.574
10) B gamma-Chl...	8.396	7.359	35564996	98616467	68.758	71.160
11) B alpha-Chl...	8.477	7.428	38867183	96930264	63.664	71.703
12) B 4,4'-DDE	8.662	7.641	31772489	85968360	68.634	73.059
13) MA Dieldrin	8.824	7.770	36331875	99603941	69.124	78.188
14) MA Endrin	9.066	8.061	29931880	108.1E6	72.534	102.360 #
15) B Endosulfa...	9.299	8.370	31080130	81286577	70.700	71.960
16) A 4,4'-DDD	9.205	8.224	27754190	70235010	61.386	71.295
17) MA 4,4'-DDT	9.524	8.485	30455162	81190479	66.260	81.149
18) B Endrin al...	9.434	8.558	24838926	43660976	70.183	54.666
19) B Endosulfa...	9.672	8.789	29699168	84200171	65.710	77.351
20) A Methoxychlor	10.010	9.079	16466647	26430126	67.235	45.227 #
21) B Endrin ke...	10.175	9.306	30128605	84179540	58.749	75.505 #
22) Mirex	10.649	9.495	25607131	66731078	63.461	68.895
24) Chlordane-2	7.658f	0.000	40561477	0	1830.057	N.D. #
25) Chlordane-3	8.396	7.359	35564996	98616467	519.507	759.815 #
26) Chlordane-4	8.477	7.428	38867183	96930264	403.437	707.069 #
27) Chlordane-5	0.000	8.140	0	3383447	N.D.	91.509 #

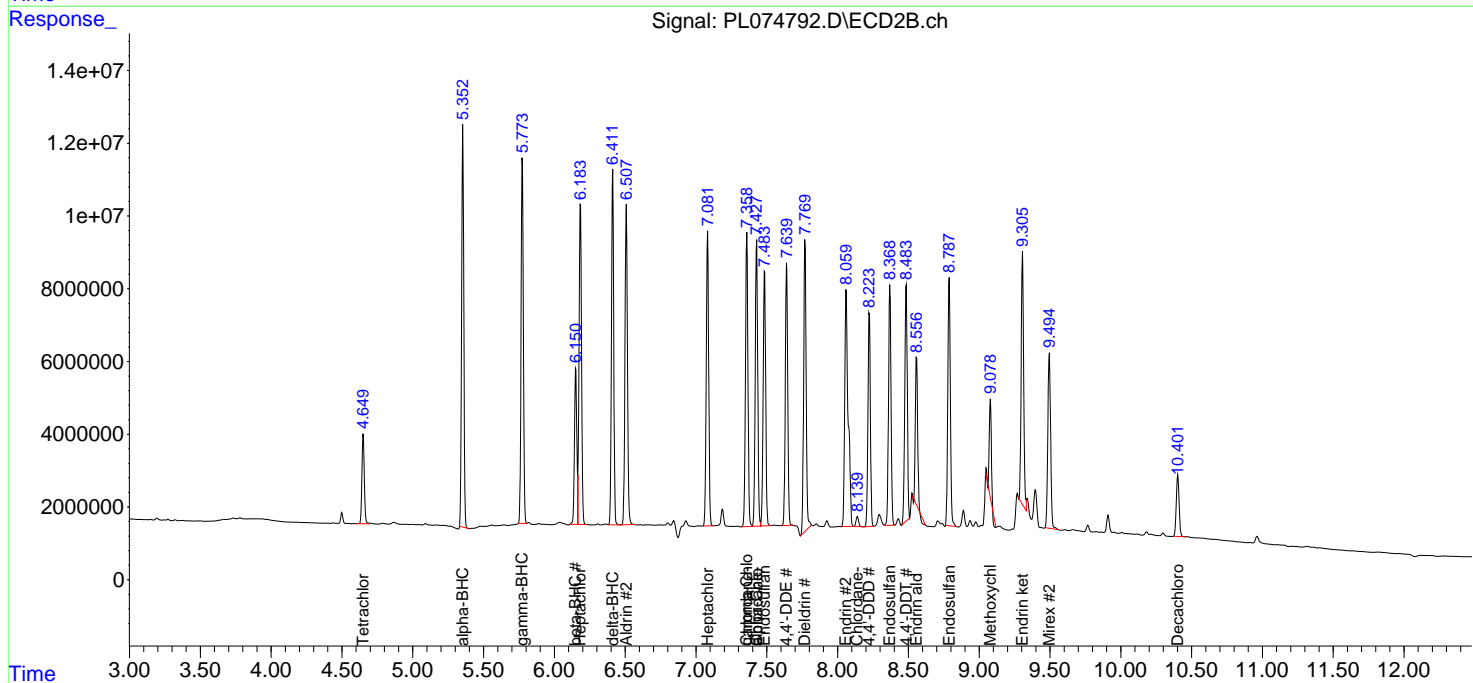
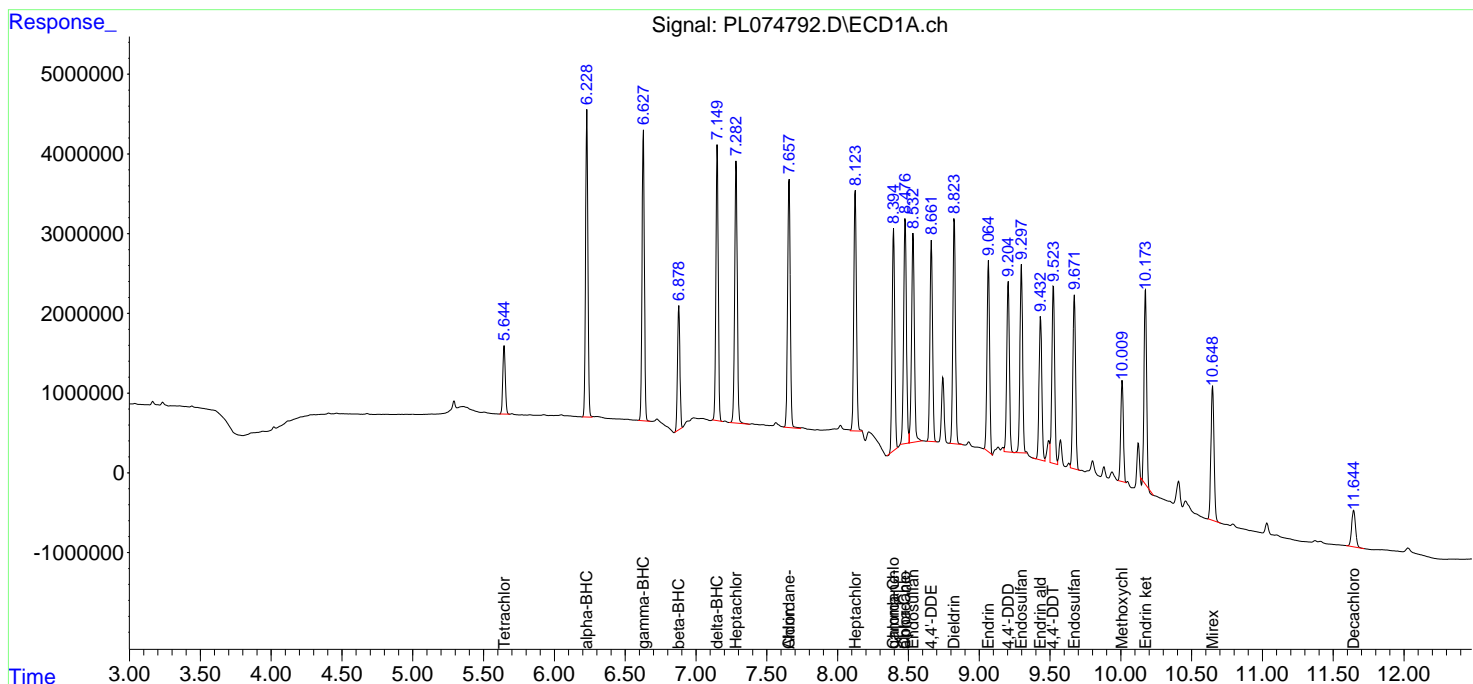
(f)=RT Delta > 1/2 Window (#)=Amounts differ by > 25% (m)=manual int.

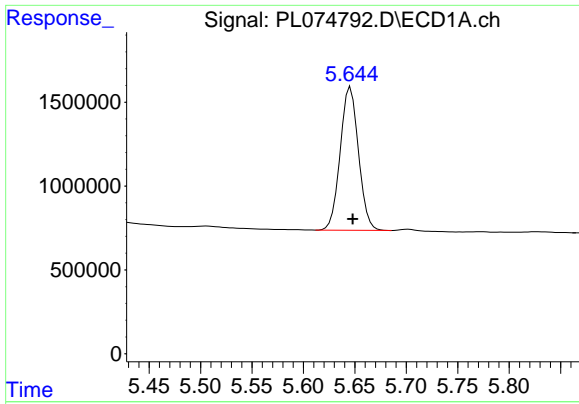
Data Path : Z:\pestpcbsrv\HPCHEM1\ECD_L\Data\PL051822\
 Data File : PL074792.D
 Signal(s) : Signal #1: ECD1A.ch Signal #2: ECD2B.ch
 Acq On : 18 May 2022 16:50
 Operator : AR\AJ
 Sample : N2863-03MS
 Misc :
 ALS Vial : 18 Sample Multiplier: 1

Instrument :
 ECD_L
 ClientSampleId :

Integration File signal 1: autoint1.e
 Integration File signal 2: autoint2.e
 Quant Time: May 19 03:14:08 2022
 Quant Method : Z:\pestpcbsrv\HPCHEM1\ECD_L\methods\PL051122.M
 Quant Title : GC Extractables
 QLast Update : Sat May 14 02:37:15 2022
 Response via : Initial Calibration
 Integrator: ChemStation

Volume Inj. : 1 µl
 Signal #1 Phase : ZB-MR2 Signal #2 Phase: ZB-MR1
 Signal #1 Info : 30M x 0.32mm x0.2 Signal #2 Info : 30M x 0.32mm x0.5µm

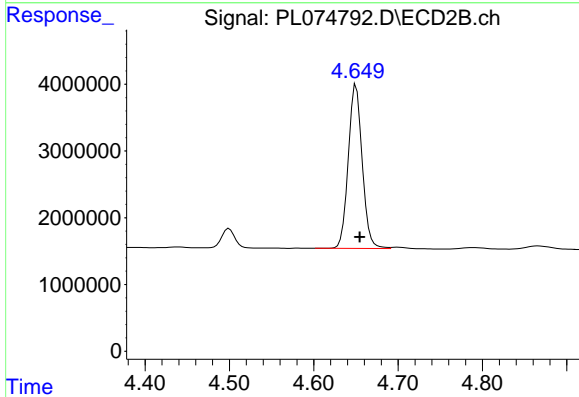




#1 Tetrachloro-m-xylene

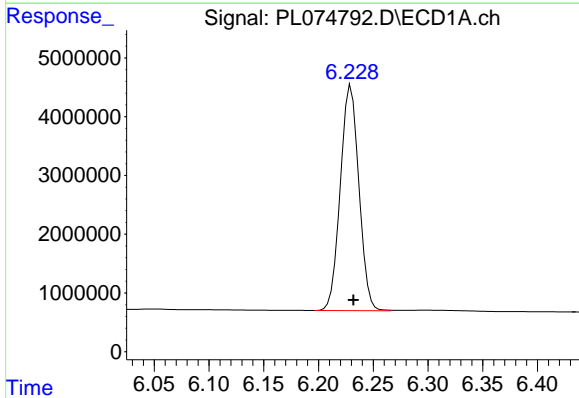
R.T.: 5.646 min
 Delta R.T.: -0.002 min
 Response: 10565918
 Conc: 20.81 ng/ml

Instrument :
 ECD_L
 ClientSampleId :



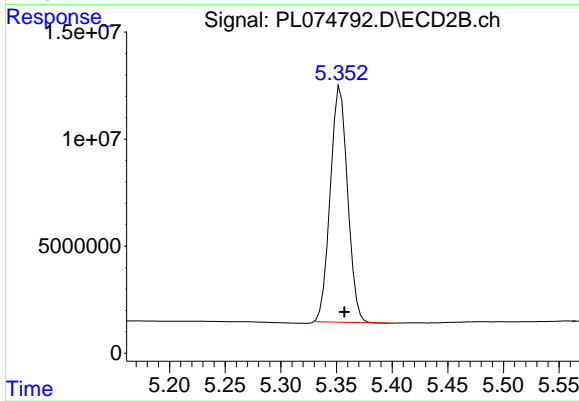
#1 Tetrachloro-m-xylene

R.T.: 4.650 min
 Delta R.T.: -0.004 min
 Response: 28172267
 Conc: 20.53 ng/ml



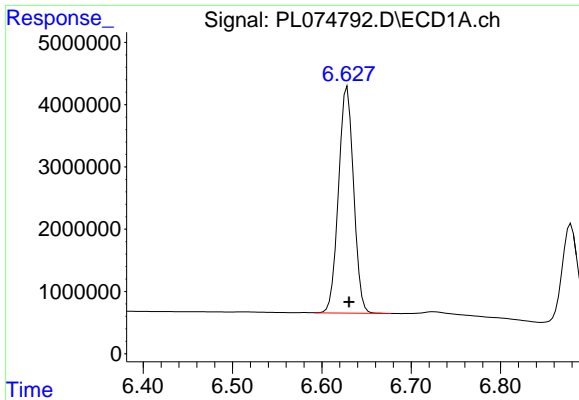
#2 alpha-BHC

R.T.: 6.230 min
 Delta R.T.: -0.002 min
 Response: 45290941
 Conc: 66.20 ng/ml



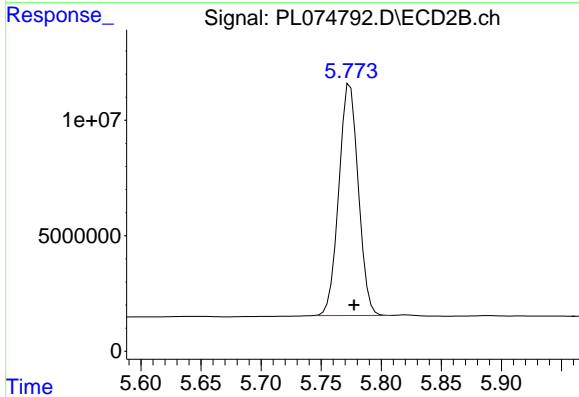
#2 alpha-BHC

R.T.: 5.353 min
 Delta R.T.: -0.004 min
 Response: 119245995
 Conc: 70.86 ng/ml

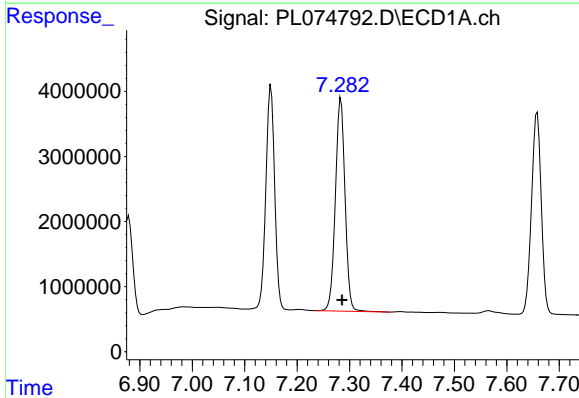


#3 gamma-BHC (Lindane)
R.T.: 6.629 min
Delta R.T.: -0.002 min
Response: 42604179
Conc: 66.00 ng/ml

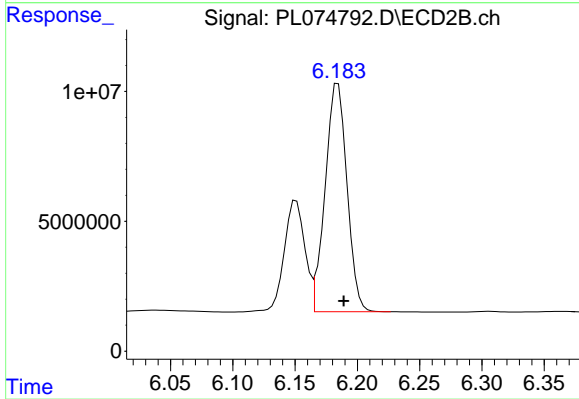
Instrument :
ECD_L
ClientSampleId :



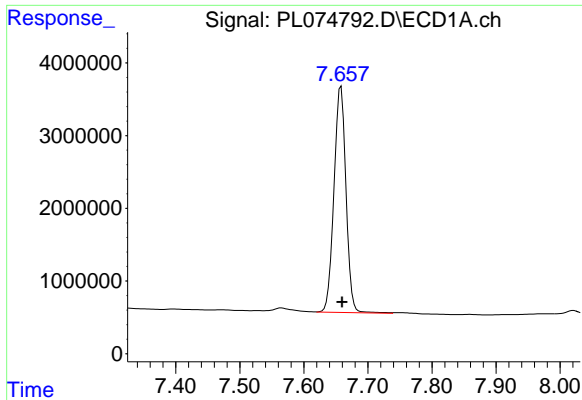
#3 gamma-BHC (Lindane)
R.T.: 5.774 min
Delta R.T.: -0.003 min
Response: 113268846
Conc: 68.55 ng/ml



#4 Heptachlor
R.T.: 7.284 min
Delta R.T.: -0.002 min
Response: 42108666
Conc: 65.25 ng/ml



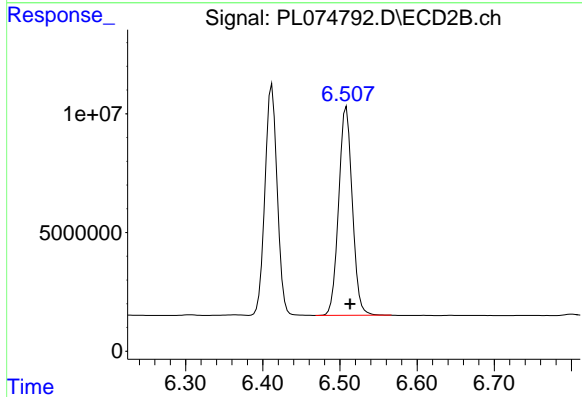
#4 Heptachlor
R.T.: 6.184 min
Delta R.T.: -0.005 min
Response: 106867408
Conc: 70.41 ng/ml



#5 Aldrin

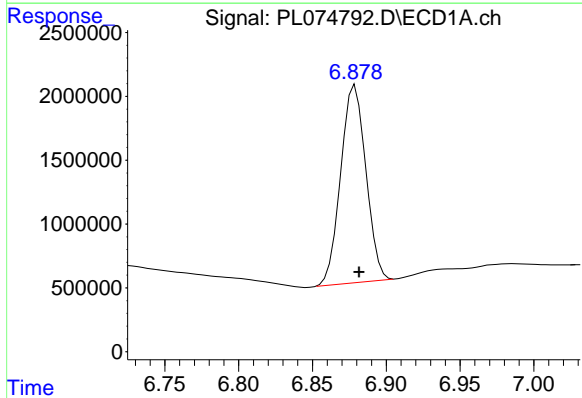
R.T.: 7.658 min
 Delta R.T.: -0.002 min
 Response: 40561477
 Conc: 65.48 ng/ml

Instrument :
 ECD_L
 ClientSampleId :



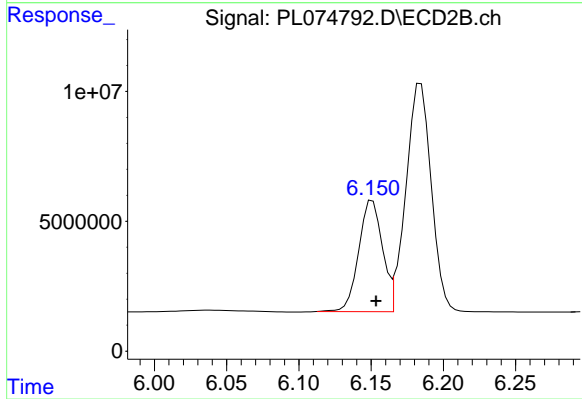
#5 Aldrin

R.T.: 6.508 min
 Delta R.T.: -0.005 min
 Response: 107688483
 Conc: 71.77 ng/ml



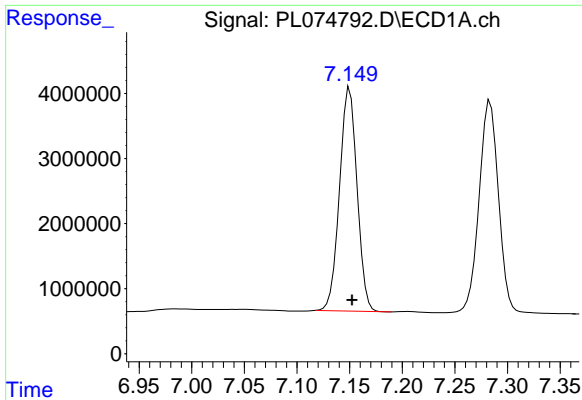
#6 beta-BHC

R.T.: 6.879 min
 Delta R.T.: -0.003 min
 Response: 18481837
 Conc: 61.93 ng/ml



#6 beta-BHC

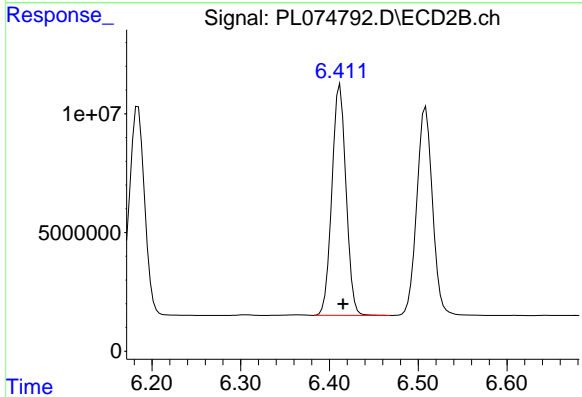
R.T.: 6.151 min
 Delta R.T.: -0.003 min
 Response: 48978116
 Conc: 61.69 ng/ml



#7 delta-BHC

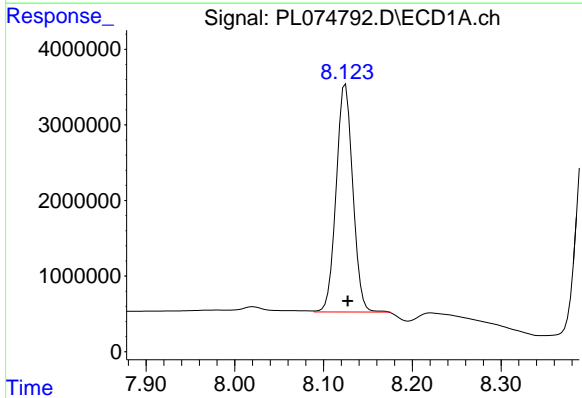
R.T.: 7.150 min
 Delta R.T.: -0.002 min
 Response: 39993047
 Conc: 63.78 ng/ml

Instrument :
 ECD_L
 ClientSampleId :



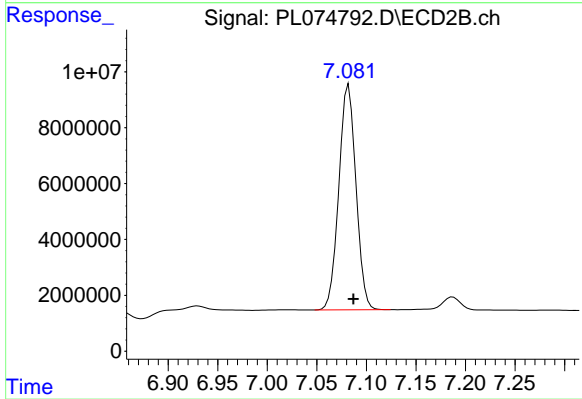
#7 delta-BHC

R.T.: 6.412 min
 Delta R.T.: -0.003 min
 Response: 107331073
 Conc: 68.64 ng/ml



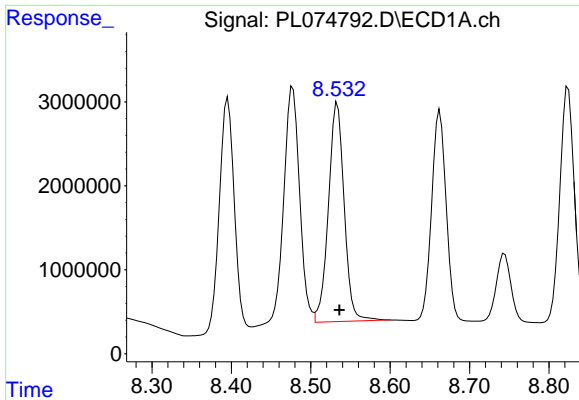
#8 Heptachlor epoxide

R.T.: 8.125 min
 Delta R.T.: -0.003 min
 Response: 39114592
 Conc: 68.77 ng/ml



#8 Heptachlor epoxide

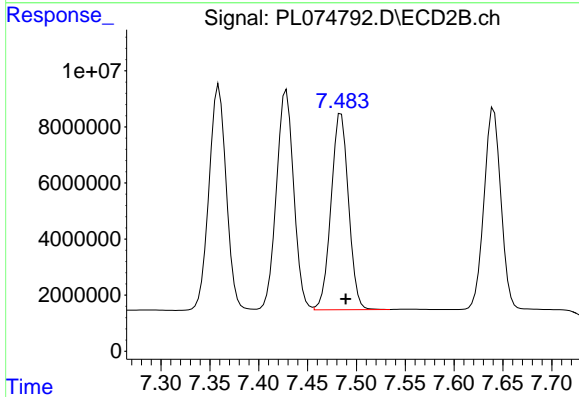
R.T.: 7.082 min
 Delta R.T.: -0.005 min
 Response: 97031656
 Conc: 69.72 ng/ml



#9 Endosulfan I

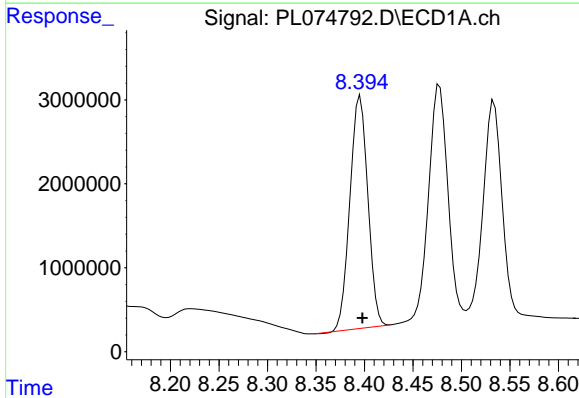
R.T.: 8.534 min
 Delta R.T.: -0.002 min
 Response: 35986012
 Conc: 62.42 ng/ml

Instrument :
 ECD_L
 ClientSampleId :



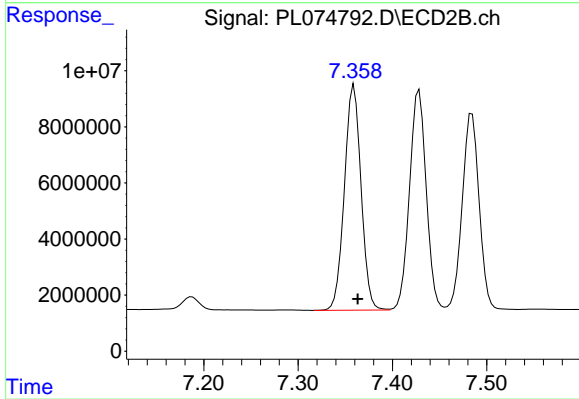
#9 Endosulfan I

R.T.: 7.484 min
 Delta R.T.: -0.005 min
 Response: 87047465
 Conc: 69.57 ng/ml



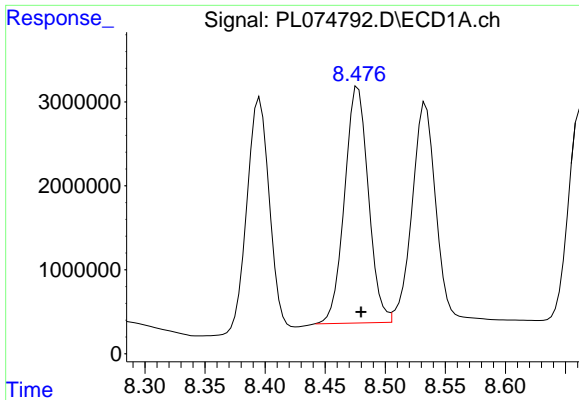
#10 gamma-Chlordane

R.T.: 8.396 min
 Delta R.T.: -0.002 min
 Response: 35564996
 Conc: 68.76 ng/ml



#10 gamma-Chlordane

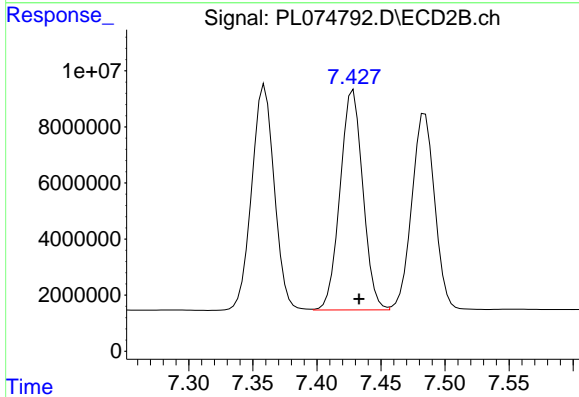
R.T.: 7.359 min
 Delta R.T.: -0.004 min
 Response: 98616467
 Conc: 71.16 ng/ml



#11 alpha-Chlordane

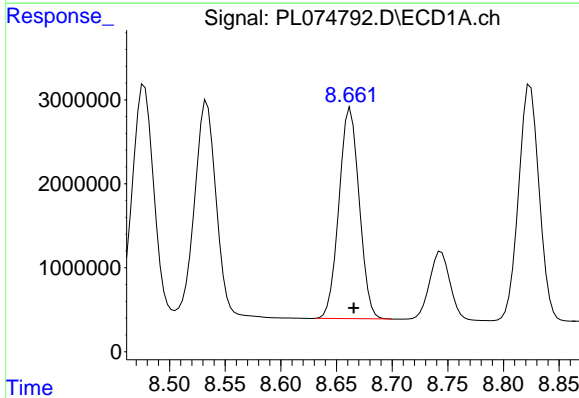
R.T.: 8.477 min
Delta R.T.: -0.002 min
Response: 38867183
Conc: 63.66 ng/ml

Instrument :
ECD_L
ClientSampleId :



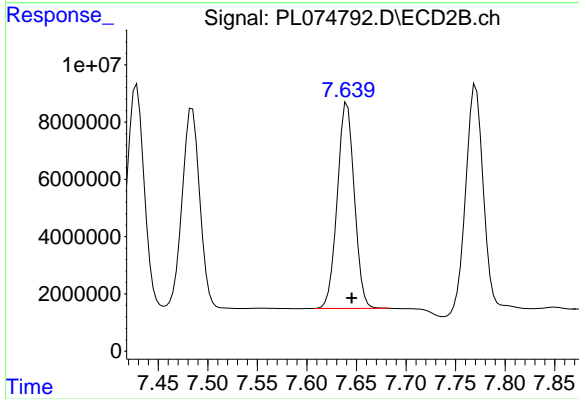
#11 alpha-Chlordane

R.T.: 7.428 min
Delta R.T.: -0.004 min
Response: 96930264
Conc: 71.70 ng/ml



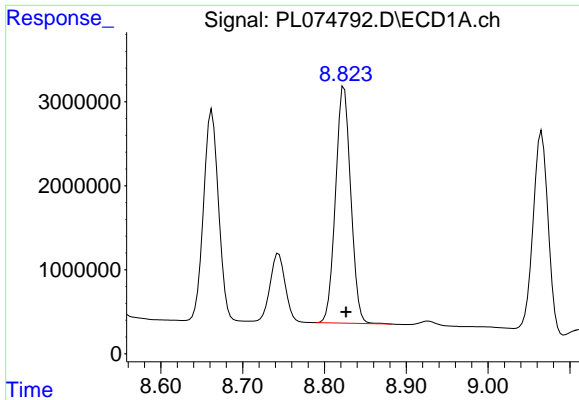
#12 4,4'-DDE

R.T.: 8.662 min
Delta R.T.: -0.003 min
Response: 31772489
Conc: 68.63 ng/ml



#12 4,4'-DDE

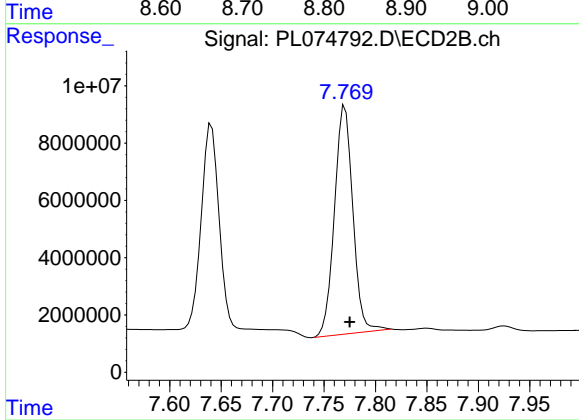
R.T.: 7.641 min
Delta R.T.: -0.005 min
Response: 85968360
Conc: 73.06 ng/ml



#13 Dieldrin

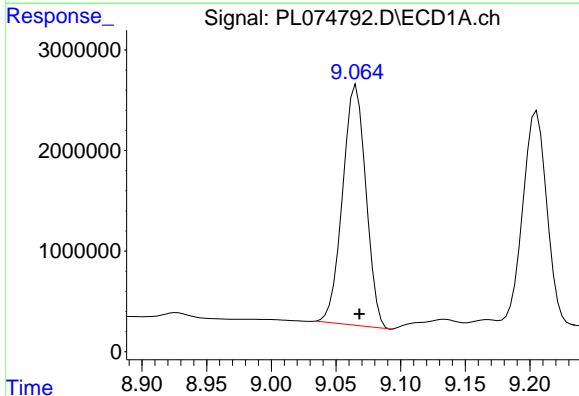
R.T.: 8.824 min
 Delta R.T.: -0.002 min
 Response: 36331875
 Conc: 69.12 ng/ml

Instrument :
 ECD_L
 ClientSampleId :



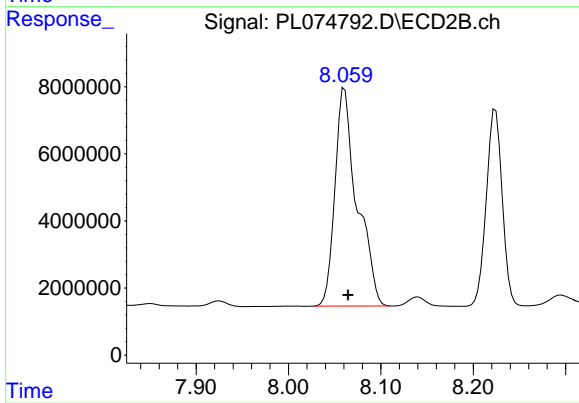
#13 Dieldrin

R.T.: 7.770 min
 Delta R.T.: -0.005 min
 Response: 99603941
 Conc: 78.19 ng/ml



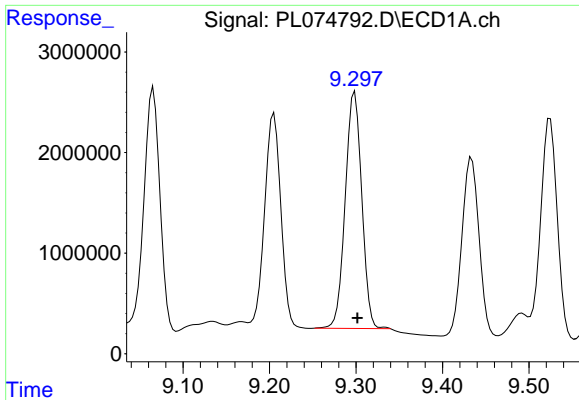
#14 Endrin

R.T.: 9.066 min
 Delta R.T.: -0.002 min
 Response: 29931880
 Conc: 72.53 ng/ml



#14 Endrin

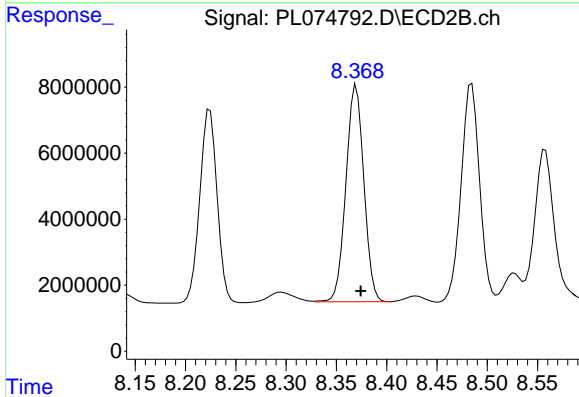
R.T.: 8.061 min
 Delta R.T.: -0.004 min
 Response: 108123104
 Conc: 102.36 ng/ml



#15 Endosulfan II

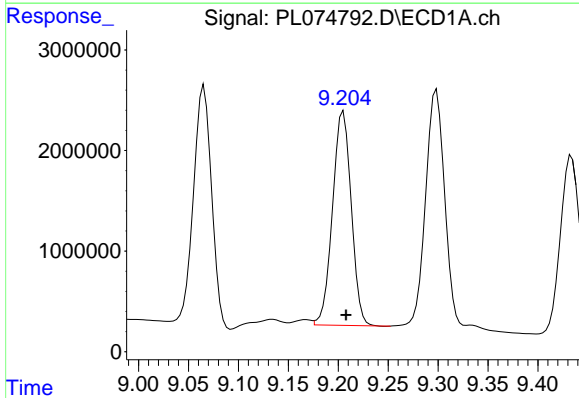
R.T.: 9.299 min
 Delta R.T.: -0.003 min
 Response: 31080130
 Conc: 70.70 ng/ml

Instrument :
 ECD_L
 ClientSampleId :



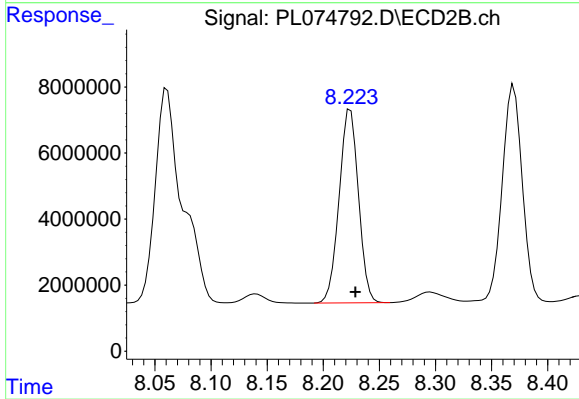
#15 Endosulfan II

R.T.: 8.370 min
 Delta R.T.: -0.004 min
 Response: 81286577
 Conc: 71.96 ng/ml



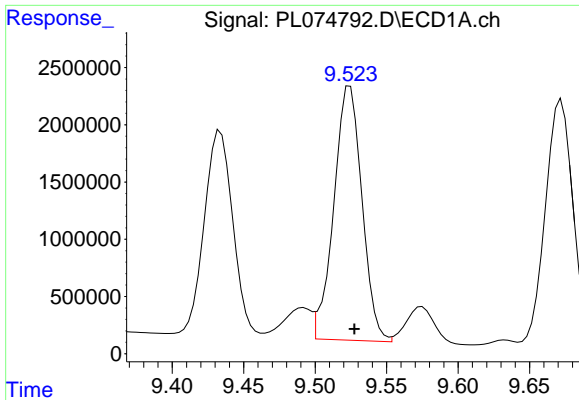
#16 4,4'-DDD

R.T.: 9.205 min
 Delta R.T.: -0.003 min
 Response: 27754190
 Conc: 61.39 ng/ml



#16 4,4'-DDD

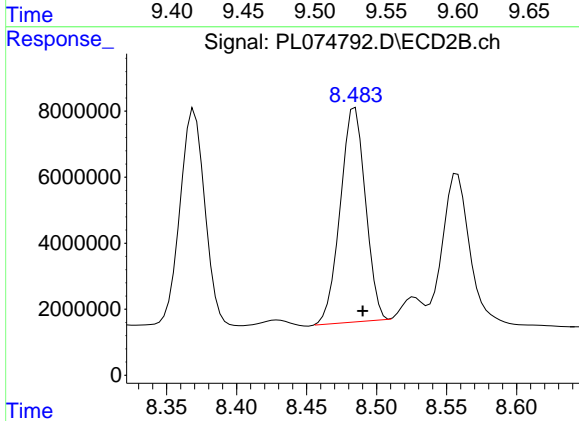
R.T.: 8.224 min
 Delta R.T.: -0.005 min
 Response: 70235010
 Conc: 71.29 ng/ml



#17 4,4'-DDT

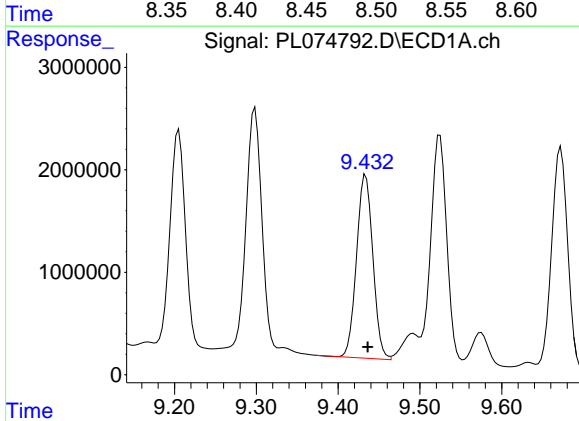
R.T.: 9.524 min
 Delta R.T.: -0.003 min
 Response: 30455162
 Conc: 66.26 ng/ml

Instrument :
 ECD_L
 ClientSampleId :



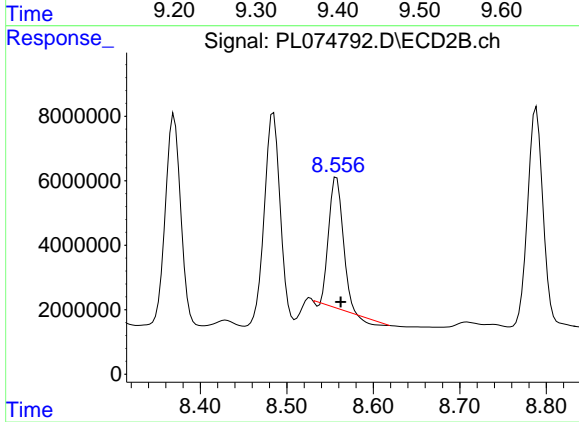
#17 4,4'-DDT

R.T.: 8.485 min
 Delta R.T.: -0.005 min
 Response: 81190479
 Conc: 81.15 ng/ml



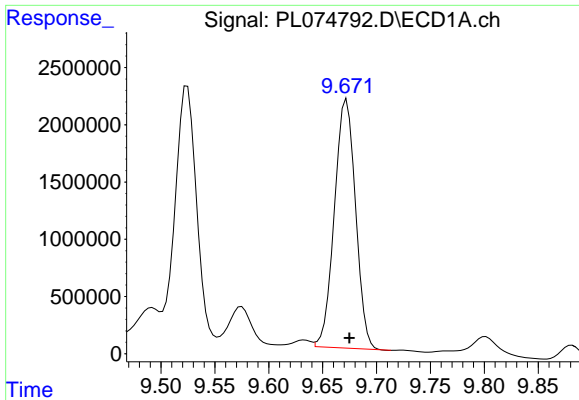
#18 Endrin aldehyde

R.T.: 9.434 min
 Delta R.T.: -0.002 min
 Response: 24838926
 Conc: 70.18 ng/ml



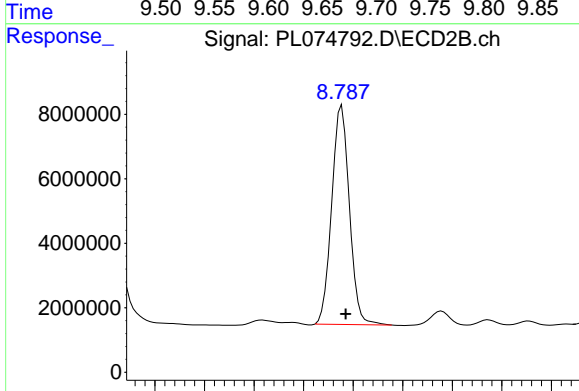
#18 Endrin aldehyde

R.T.: 8.558 min
 Delta R.T.: -0.005 min
 Response: 43660976
 Conc: 54.67 ng/ml

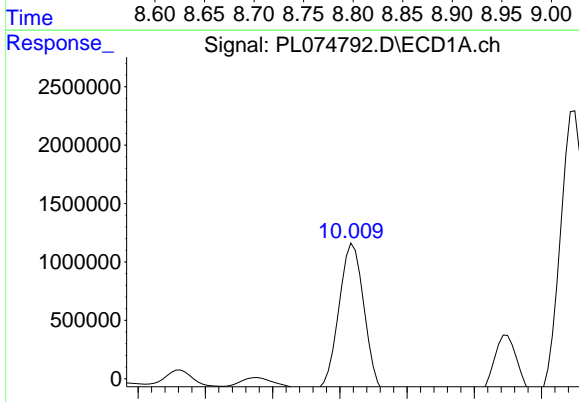


#19 Endosulfan Sulfate
 R.T.: 9.672 min
 Delta R.T.: -0.003 min
 Response: 29699168
 Conc: 65.71 ng/ml

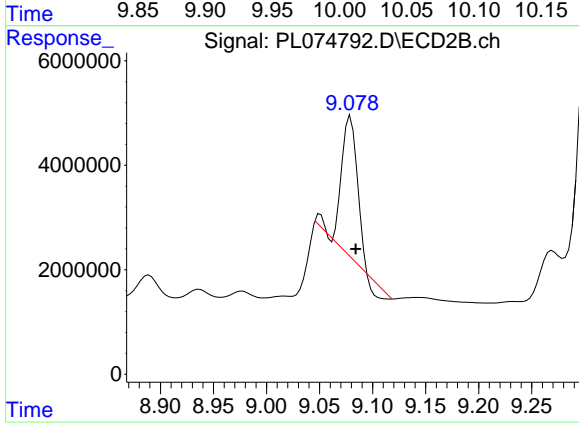
Instrument :
 ECD_L
 ClientSampleId :



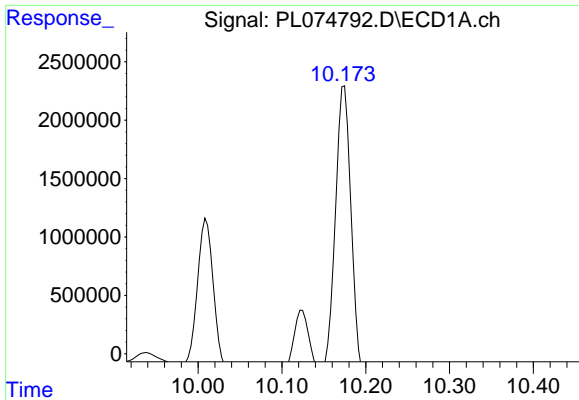
#19 Endosulfan Sulfate
 R.T.: 8.789 min
 Delta R.T.: -0.004 min
 Response: 84200171
 Conc: 77.35 ng/ml



#20 Methoxychlor
 R.T.: 10.010 min
 Delta R.T.: -0.003 min
 Response: 16466647
 Conc: 67.23 ng/ml



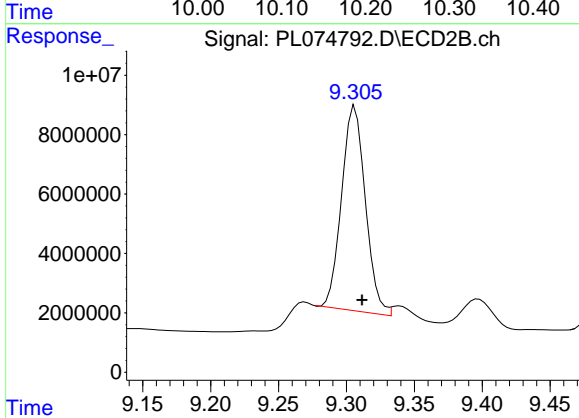
#20 Methoxychlor
 R.T.: 9.079 min
 Delta R.T.: -0.005 min
 Response: 26430126
 Conc: 45.23 ng/ml



#21 Endrin ketone

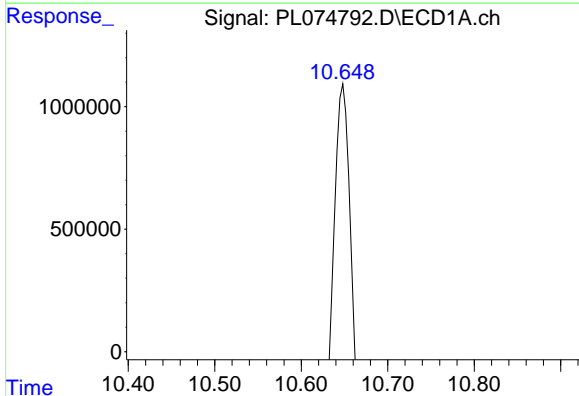
R.T.: 10.175 min
 Delta R.T.: -0.003 min
 Response: 30128605
 Conc: 58.75 ng/ml

Instrument :
 ECD_L
 ClientSampleId :



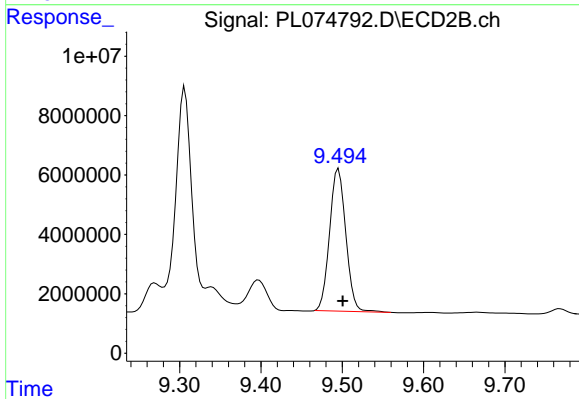
#21 Endrin ketone

R.T.: 9.306 min
 Delta R.T.: -0.005 min
 Response: 84179540
 Conc: 75.50 ng/ml



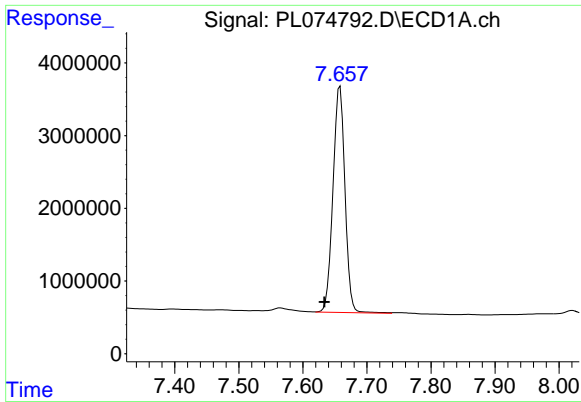
#22 Mirex

R.T.: 10.649 min
 Delta R.T.: -0.003 min
 Response: 25607131
 Conc: 63.46 ng/ml



#22 Mirex

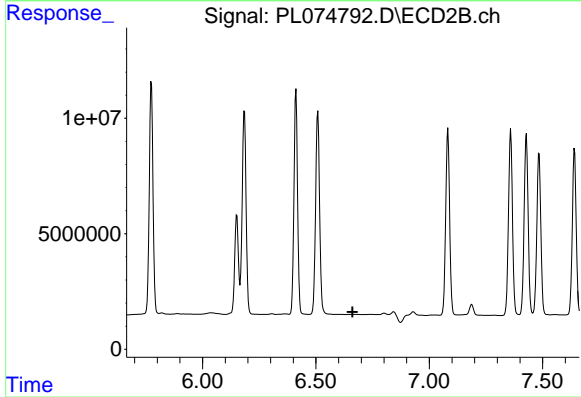
R.T.: 9.495 min
 Delta R.T.: -0.005 min
 Response: 66731078
 Conc: 68.89 ng/ml



#24 Chlordane-2

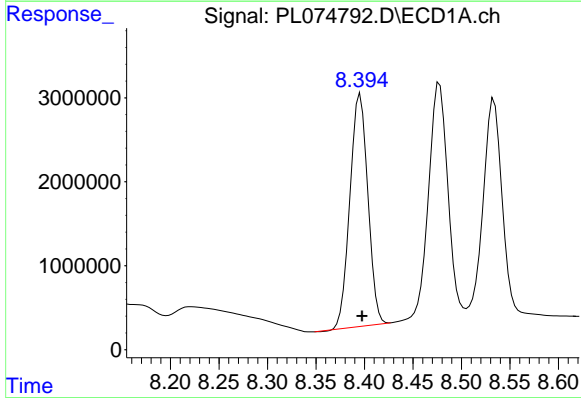
R.T.: 7.658 min
 Delta R.T.: 0.024 min
 Response: 40561477
 Conc: 1830.06 ng/m

Instrument :
 ECD_L
 ClientSampleId :



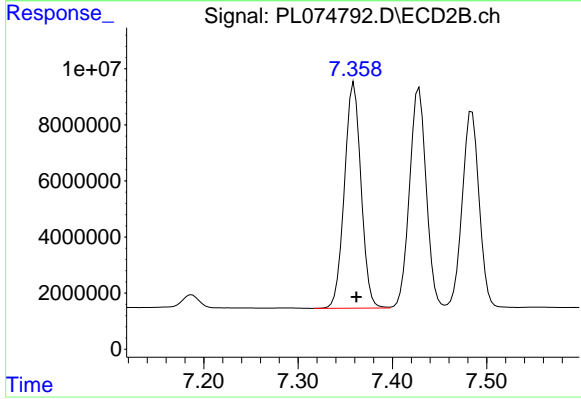
#24 Chlordane-2

R.T.: 0.000 min
 Exp R.T. : 6.662 min
 Response: 0
 Conc: N.D.



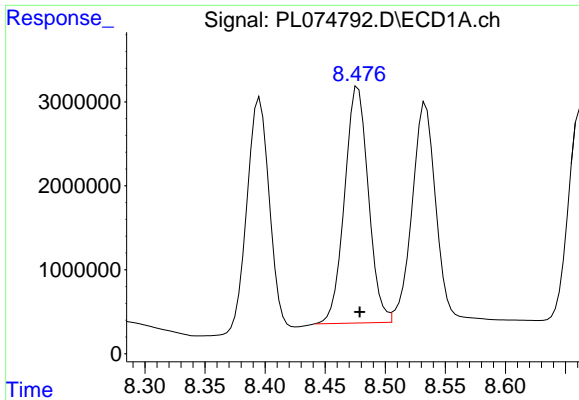
#25 Chlordane-3

R.T.: 8.396 min
 Delta R.T.: -0.002 min
 Response: 35564996
 Conc: 519.51 ng/ml



#25 Chlordane-3

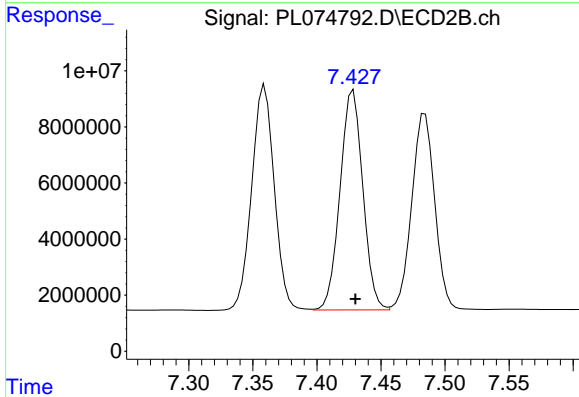
R.T.: 7.359 min
 Delta R.T.: -0.002 min
 Response: 98616467
 Conc: 759.82 ng/ml



#26 Chlordane-4

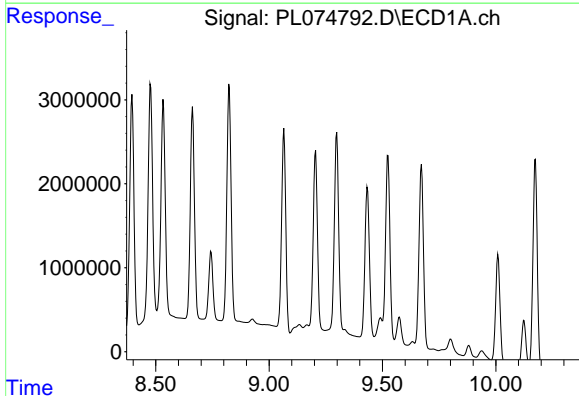
R.T.: 8.477 min
 Delta R.T.: -0.001 min
 Response: 38867183
 Conc: 403.44 ng/ml

Instrument :
 ECD_L
 ClientSampleId :



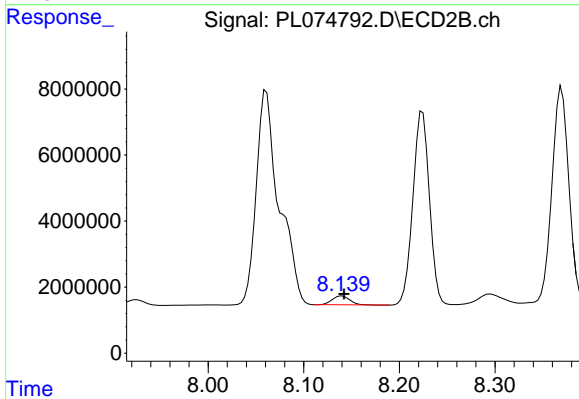
#26 Chlordane-4

R.T.: 7.428 min
 Delta R.T.: -0.002 min
 Response: 96930264
 Conc: 707.07 ng/ml



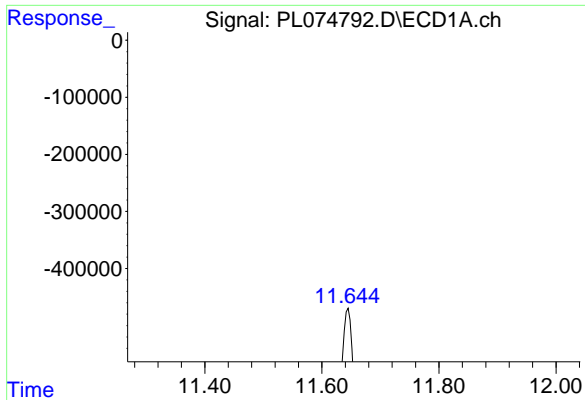
#27 Chlordane-5

R.T.: 0.000 min
 Exp R.T. : 9.371 min
 Response: 0
 Conc: N.D.



#27 Chlordane-5

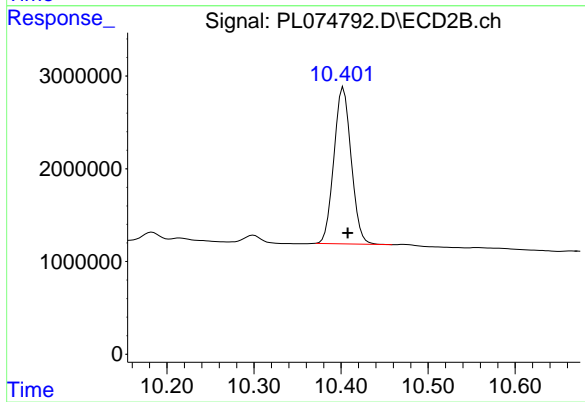
R.T.: 8.140 min
 Delta R.T.: -0.002 min
 Response: 3383447
 Conc: 91.51 ng/ml



#28 Decachlorobiphenyl

R.T.: 11.645 min
Delta R.T.: -0.006 min
Response: 8832291
Conc: 19.78 ng/ml

Instrument :
ECD_L
ClientSampleId :



#28 Decachlorobiphenyl

R.T.: 10.403 min
Delta R.T.: -0.005 min
Response: 23233502
Conc: 22.64 ng/ml