

Data Path : Z:\pestpcbsrv\HPCHEM1\ECD_L\Data\PL051822\
 Data File : PL074816.D
 Signal(s) : Signal #1: ECD1A.ch Signal #2: ECD2B.ch
 Acq On : 19 May 2022 02:22
 Operator : AR\AJ
 Sample : N2865-02MS
 Misc :
 ALS Vial : 39 Sample Multiplier: 1

Instrument :
 ECD_L
 ClientSampleId :

Integration File signal 1: autoint1.e
 Integration File signal 2: autoint2.e
 Quant Time: May 19 03:20:29 2022
 Quant Method : Z:\pestpcbsrv\HPCHEM1\ECD_L\methods\PL051122.M
 Quant Title : GC Extractables
 QLast Update : Sat May 14 02:37:15 2022
 Response via : Initial Calibration
 Integrator: ChemStation

Volume Inj. : 1 µl
 Signal #1 Phase : ZB-MR2 Signal #2 Phase: ZB-MR1
 Signal #1 Info : 30M x 0.32mm x0.2 Signal #2 Info : 30M x 0.32mm x0.5µm

Compound	RT#1	RT#2	Resp#1	Resp#2	ng/ml	ng/ml

System Monitoring Compounds						
1) SA Tetrachlo...	5.646	4.651	10655117	27177729	20.985	19.801
28) SA Decachlor...	11.645	10.403	7979404	19363323	17.868	18.865
Target Compounds						
2) A alpha-BHC	6.229	5.354	43782209	109.6E6	63.995	65.144
3) MA gamma-BHC...	6.628	5.774	41266728	103.3E6	63.930	62.511
4) MA Heptachlor	7.283	6.185	41036921	98492673	63.586	64.890
5) MB Aldrin	7.657	6.509	39413882	99146775	63.624	66.077
6) B beta-BHC	6.879	6.152	18055513	45424692	60.497	57.212
7) B delta-BHC	7.150	6.413	38959683	97571035	62.132	62.398
8) B Heptachlo...	8.125	7.083	35882620	89017817	63.091	63.960
9) A Endosulfan I	8.533	7.485	35411526	80721550	61.425	64.518
10) B gamma-Chl...	8.395	7.360	33628711	90405386	65.014	65.235
11) B alpha-Chl...	8.477	7.429	38173069	88855649	62.527	65.730
12) B 4,4'-DDE	8.662	7.641	31209440	79546791	67.417	67.601
13) MA Dieldrin	8.824	7.771	35406087	87633181	67.362	68.791
14) MA Endrin	9.065	8.061	29245449	76113589	70.870	72.056
15) B Endosulfa...	9.299	8.371	31407523	76061496	71.444	67.334
16) A 4,4'-DDD	9.204	8.225	27613845	63510732	61.076	64.469
17) MA 4,4'-DDT	9.524	8.486	30195193	72538224	65.694	72.501
18) B Endrin al...	9.433	8.558	25482491	53174493	72.001	66.578
19) B Endosulfa...	9.671	8.789	29162491	75343277	64.523	69.215
20) A Methoxychlor	10.009	9.079	16567350	34696742	67.646	59.372
21) B Endrin ke...	10.174	9.307	32155448	80529800	62.701	72.231
22) Mirex	10.647	9.497	25010143	62354600	61.982	64.376
24) Chlordane-2	7.657f	0.000	39413882	0	1778.280	N.D. #
25) Chlordane-3	8.395	7.360	33628711	90405386	491.223	696.551 #
26) Chlordane-4	8.477	7.429	38173069	88855649	396.232	648.168 #
27) Chlordane-5	0.000	8.140	0	3859265	N.D.	104.378 #

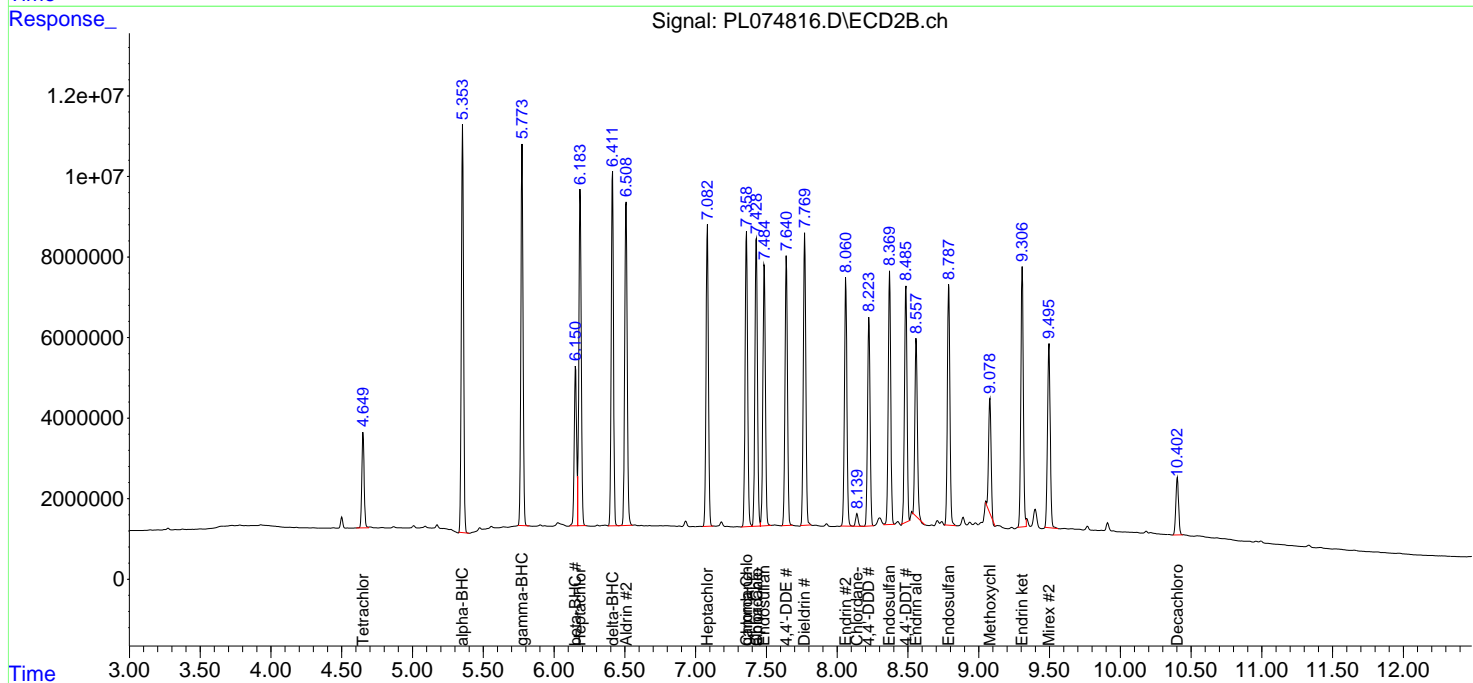
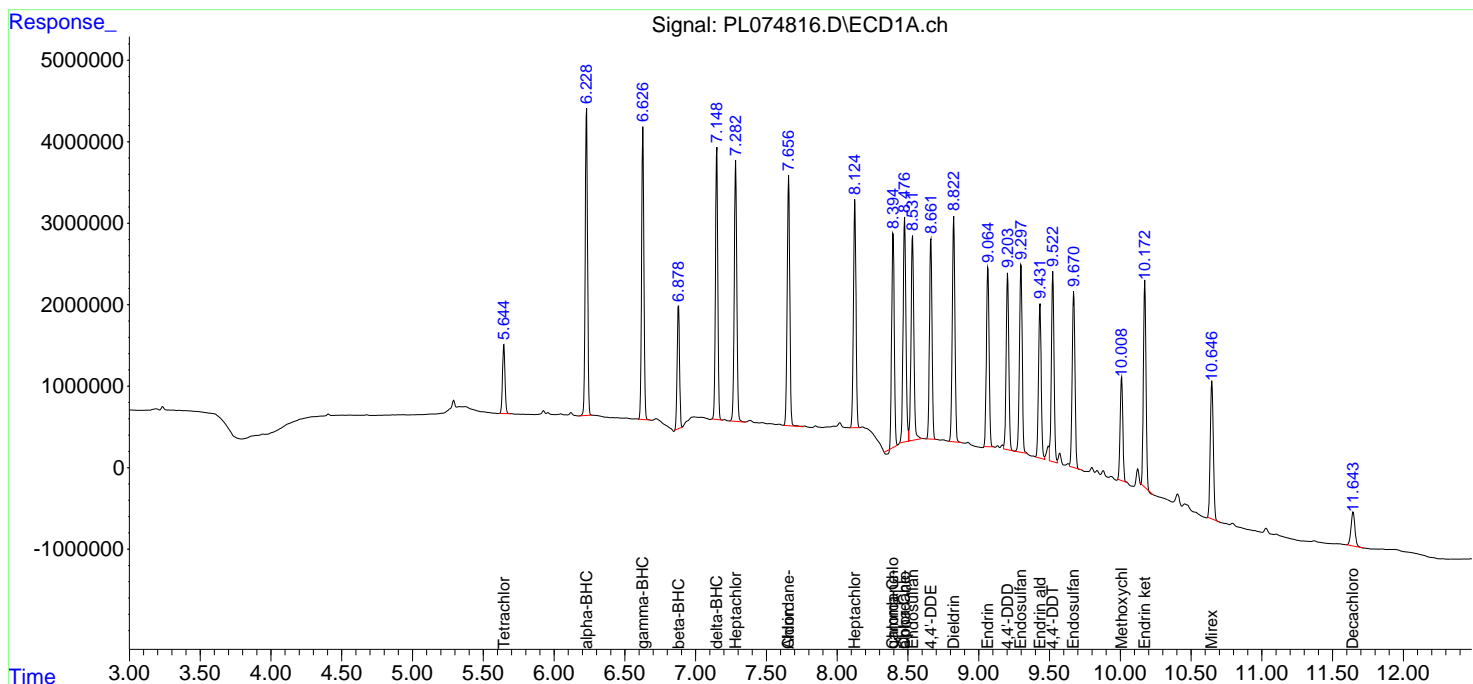
(f)=RT Delta > 1/2 Window (#)=Amounts differ by > 25% (m)=manual int.

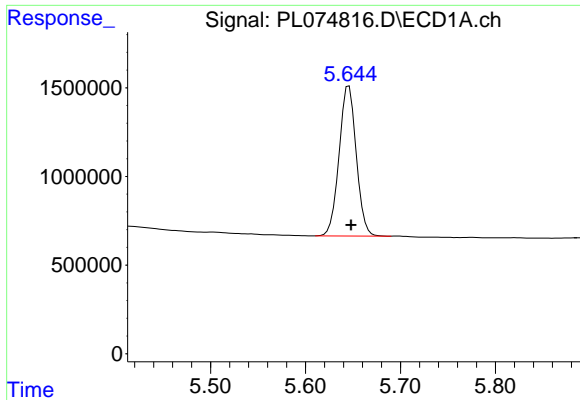
Data Path : Z:\pestpcbsrv\HPCHEM1\ECD_L\Data\PL051822\
 Data File : PL074816.D
 Signal(s) : Signal #1: ECD1A.ch Signal #2: ECD2B.ch
 Acq On : 19 May 2022 02:22
 Operator : AR\AJ
 Sample : N2865-02MS
 Misc :
 ALS Vial : 39 Sample Multiplier: 1

Instrument :
 ECD_L
 ClientSampleId :

Integration File signal 1: autoint1.e
 Integration File signal 2: autoint2.e
 Quant Time: May 19 03:20:29 2022
 Quant Method : Z:\pestpcbsrv\HPCHEM1\ECD_L\methods\PL051122.M
 Quant Title : GC Extractables
 QLast Update : Sat May 14 02:37:15 2022
 Response via : Initial Calibration
 Integrator: ChemStation

Volume Inj. : 1 µl
 Signal #1 Phase : ZB-MR2 Signal #2 Phase: ZB-MR1
 Signal #1 Info : 30M x 0.32mm x0.2 Signal #2 Info : 30M x 0.32mm x0.5µm

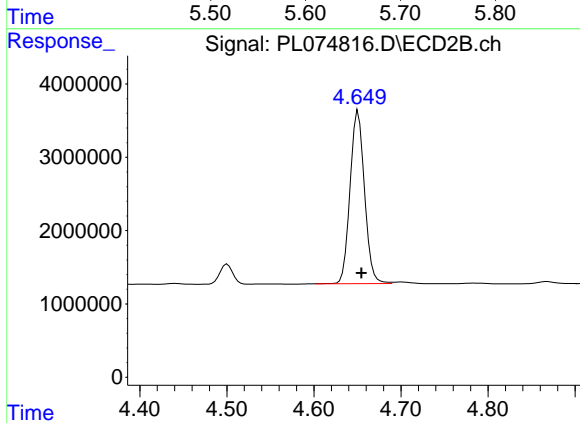




#1 Tetrachloro-m-xylene

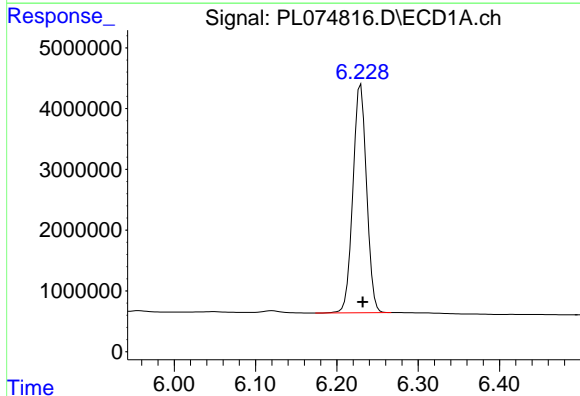
R.T.: 5.646 min
 Delta R.T.: -0.002 min
 Response: 10655117
 Conc: 20.99 ng/ml

Instrument :
 ECD_L
 ClientSampleId :



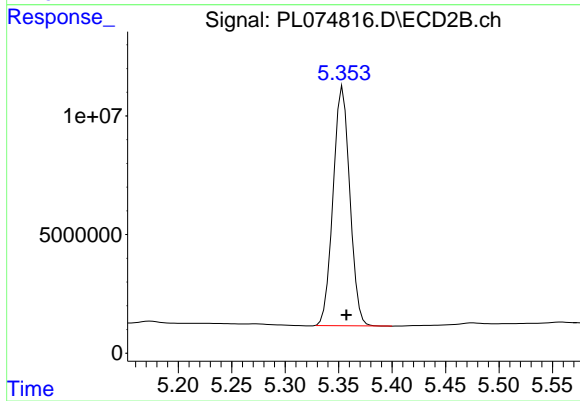
#1 Tetrachloro-m-xylene

R.T.: 4.651 min
 Delta R.T.: -0.004 min
 Response: 27177729
 Conc: 19.80 ng/ml



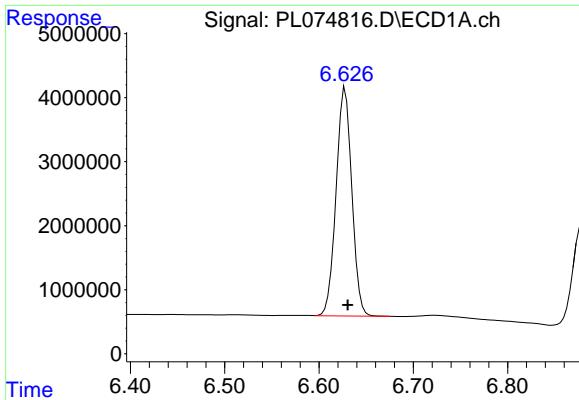
#2 alpha-BHC

R.T.: 6.229 min
 Delta R.T.: -0.002 min
 Response: 43782209
 Conc: 64.00 ng/ml



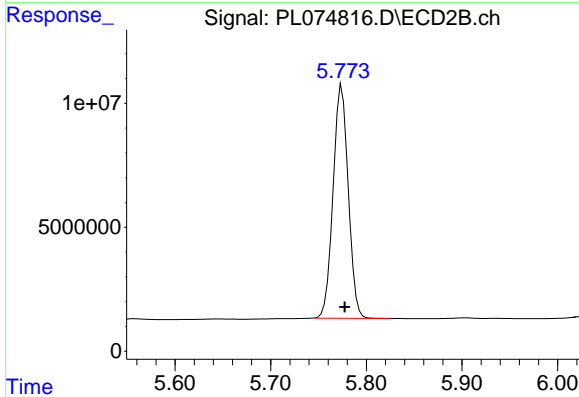
#2 alpha-BHC

R.T.: 5.354 min
 Delta R.T.: -0.003 min
 Response: 109631196
 Conc: 65.14 ng/ml

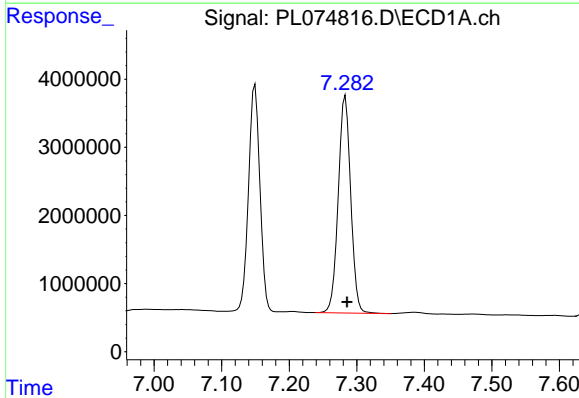


#3 gamma-BHC (Lindane)
 R.T.: 6.628 min
 Delta R.T.: -0.003 min
 Response: 41266728
 Conc: 63.93 ng/ml

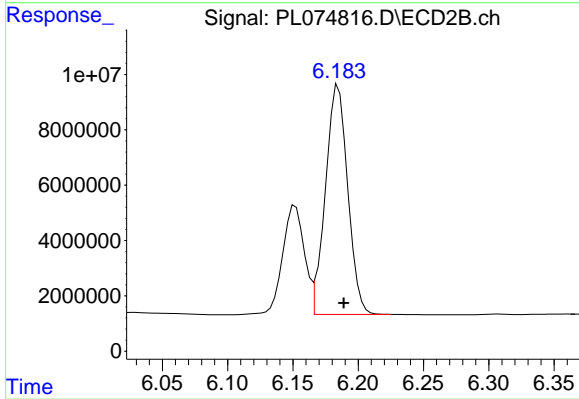
Instrument :
 ECD_L
 ClientSampleId :



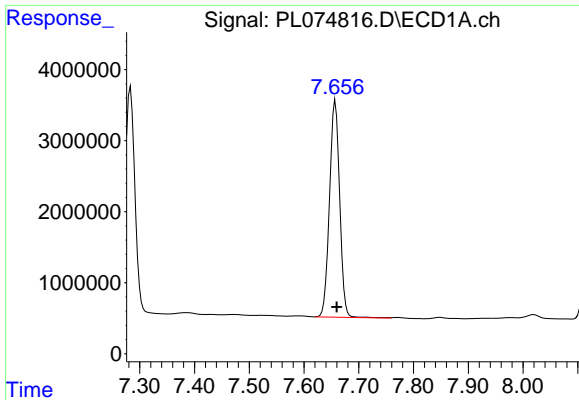
#3 gamma-BHC (Lindane)
 R.T.: 5.774 min
 Delta R.T.: -0.003 min
 Response: 103293188
 Conc: 62.51 ng/ml



#4 Heptachlor
 R.T.: 7.283 min
 Delta R.T.: -0.003 min
 Response: 41036921
 Conc: 63.59 ng/ml



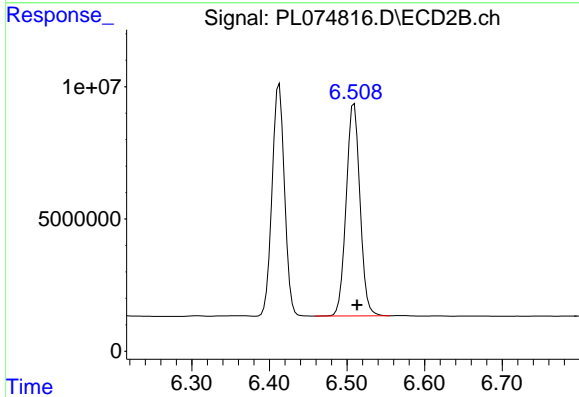
#4 Heptachlor
 R.T.: 6.185 min
 Delta R.T.: -0.004 min
 Response: 98492673
 Conc: 64.89 ng/ml



#5 Aldrin

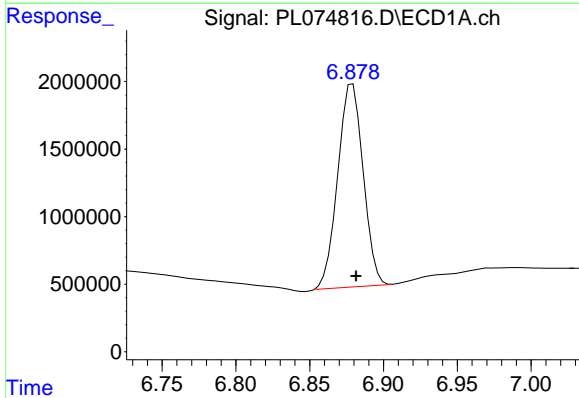
R.T.: 7.657 min
 Delta R.T.: -0.003 min
 Response: 39413882
 Conc: 63.62 ng/ml

Instrument :
 ECD_L
 ClientSampleId :



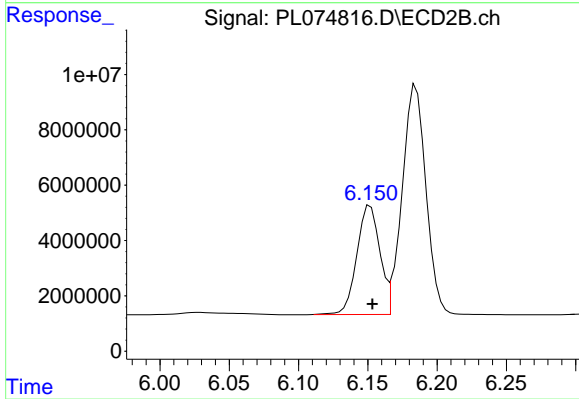
#5 Aldrin

R.T.: 6.509 min
 Delta R.T.: -0.004 min
 Response: 99146775
 Conc: 66.08 ng/ml



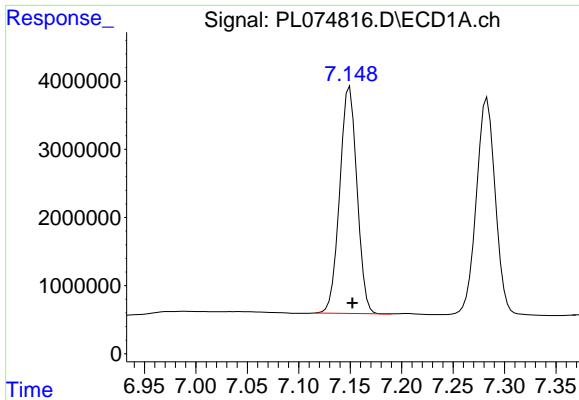
#6 beta-BHC

R.T.: 6.879 min
 Delta R.T.: -0.002 min
 Response: 18055513
 Conc: 60.50 ng/ml



#6 beta-BHC

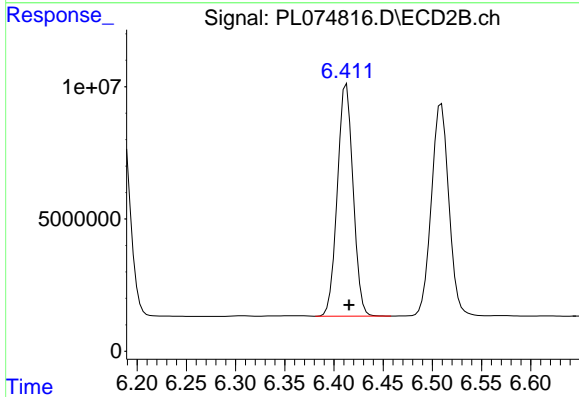
R.T.: 6.152 min
 Delta R.T.: -0.002 min
 Response: 45424692
 Conc: 57.21 ng/ml



#7 delta-BHC

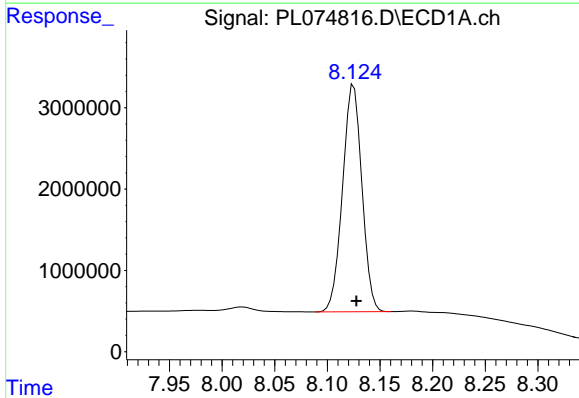
R.T.: 7.150 min
 Delta R.T.: -0.003 min
 Response: 38959683
 Conc: 62.13 ng/ml

Instrument :
 ECD_L
 ClientSampleId :



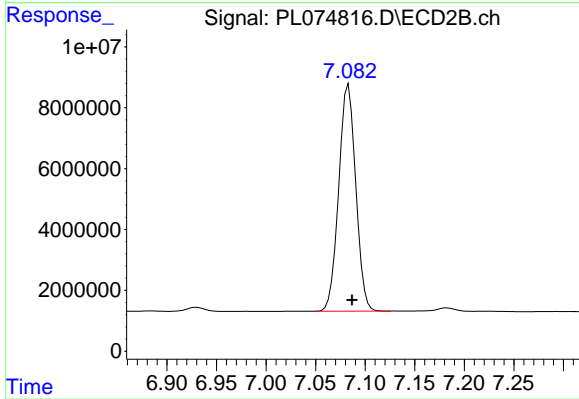
#7 delta-BHC

R.T.: 6.413 min
 Delta R.T.: -0.003 min
 Response: 97571035
 Conc: 62.40 ng/ml



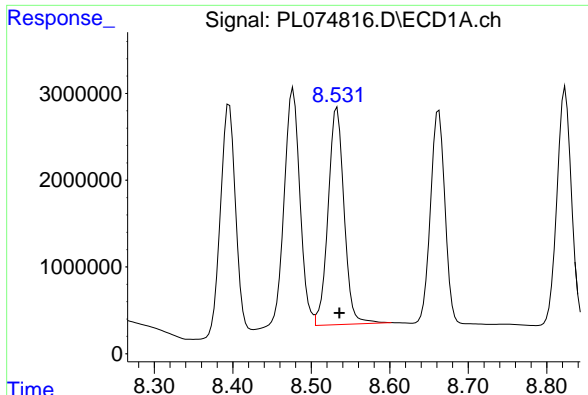
#8 Heptachlor epoxide

R.T.: 8.125 min
 Delta R.T.: -0.002 min
 Response: 35882620
 Conc: 63.09 ng/ml



#8 Heptachlor epoxide

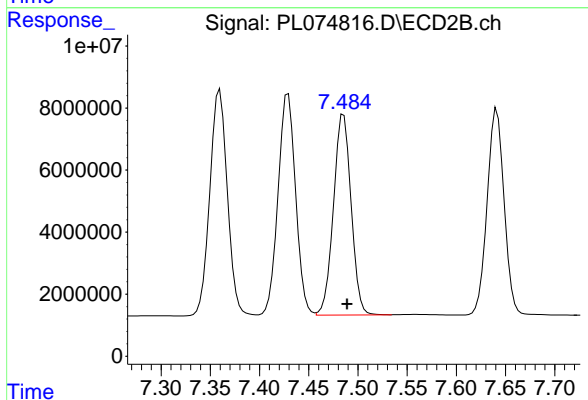
R.T.: 7.083 min
 Delta R.T.: -0.004 min
 Response: 89017817
 Conc: 63.96 ng/ml



#9 Endosulfan I

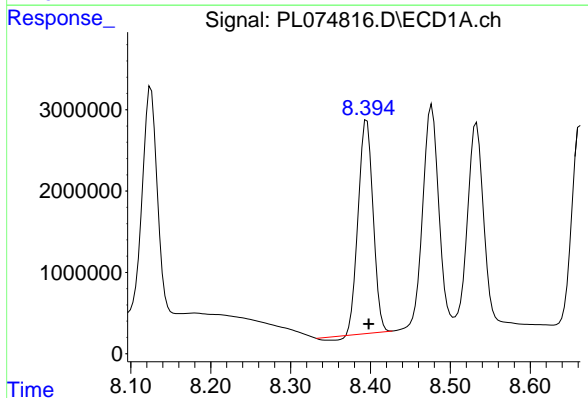
R.T.: 8.533 min
 Delta R.T.: -0.003 min
 Response: 35411526
 Conc: 61.43 ng/ml

Instrument :
 ECD_L
 ClientSampleId :



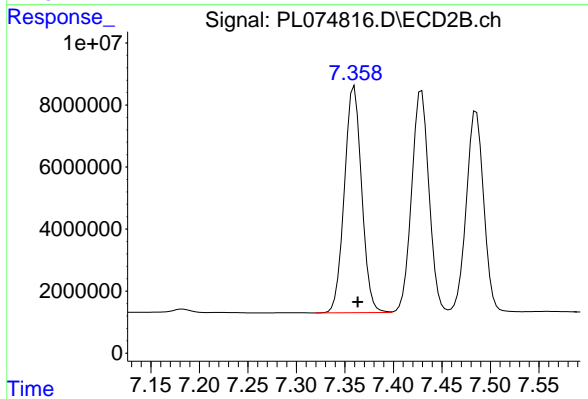
#9 Endosulfan I

R.T.: 7.485 min
 Delta R.T.: -0.004 min
 Response: 80721550
 Conc: 64.52 ng/ml



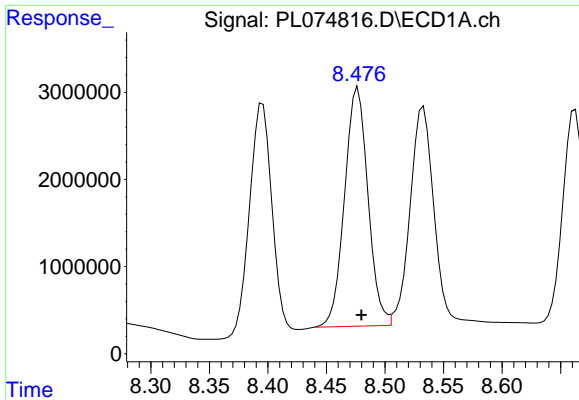
#10 gamma-Chlordane

R.T.: 8.395 min
 Delta R.T.: -0.002 min
 Response: 33628711
 Conc: 65.01 ng/ml



#10 gamma-Chlordane

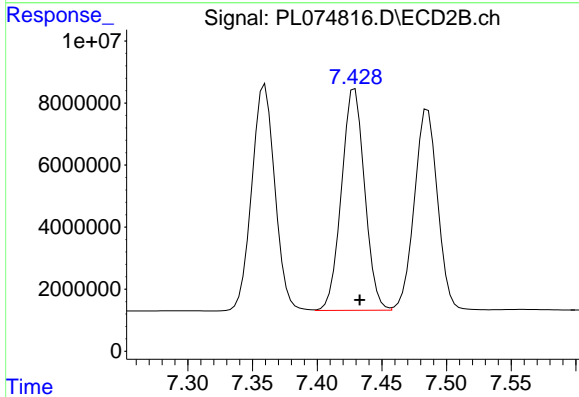
R.T.: 7.360 min
 Delta R.T.: -0.004 min
 Response: 90405386
 Conc: 65.24 ng/ml



#11 alpha-Chlordane

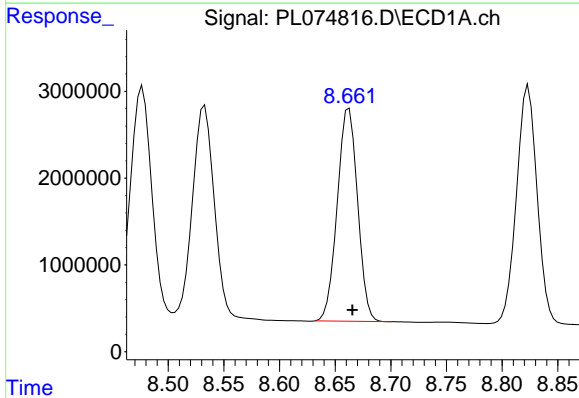
R.T.: 8.477 min
 Delta R.T.: -0.003 min
 Response: 38173069
 Conc: 62.53 ng/ml

Instrument :
 ECD_L
 ClientSampleId :



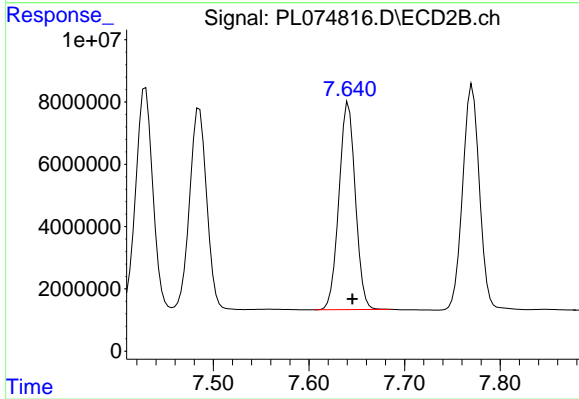
#11 alpha-Chlordane

R.T.: 7.429 min
 Delta R.T.: -0.004 min
 Response: 88855649
 Conc: 65.73 ng/ml



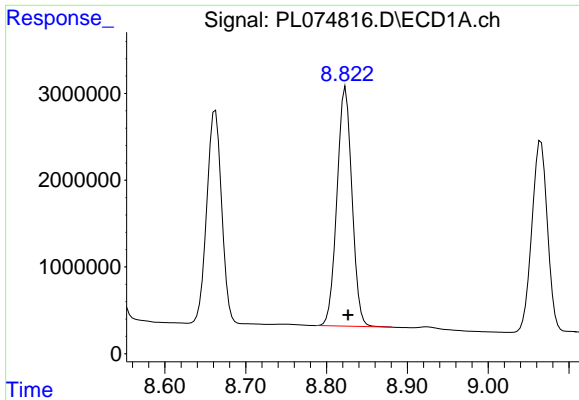
#12 4,4'-DDE

R.T.: 8.662 min
 Delta R.T.: -0.003 min
 Response: 31209440
 Conc: 67.42 ng/ml



#12 4,4'-DDE

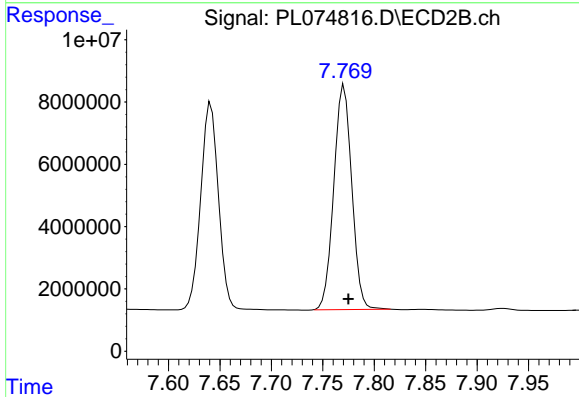
R.T.: 7.641 min
 Delta R.T.: -0.004 min
 Response: 79546791
 Conc: 67.60 ng/ml



#13 Dieldrin

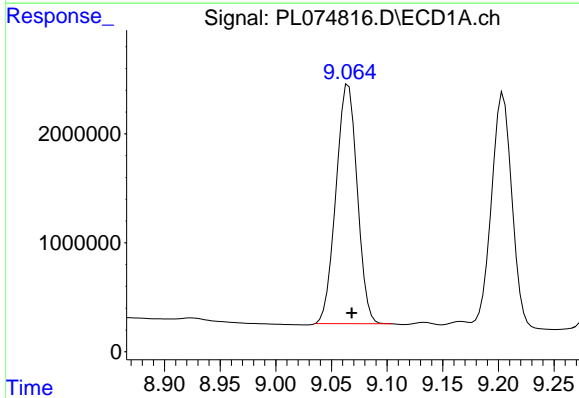
R.T.: 8.824 min
 Delta R.T.: -0.003 min
 Response: 35406087
 Conc: 67.36 ng/ml

Instrument :
 ECD_L
 ClientSampleId :



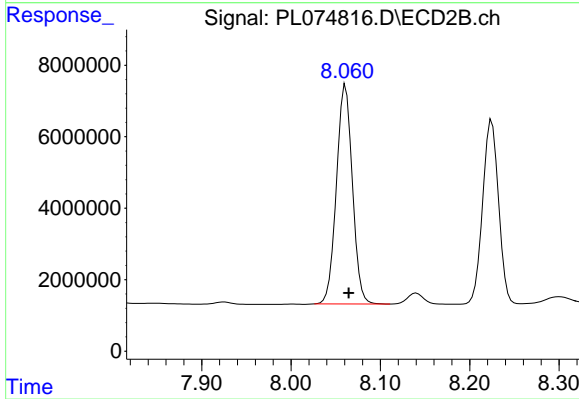
#13 Dieldrin

R.T.: 7.771 min
 Delta R.T.: -0.004 min
 Response: 87633181
 Conc: 68.79 ng/ml



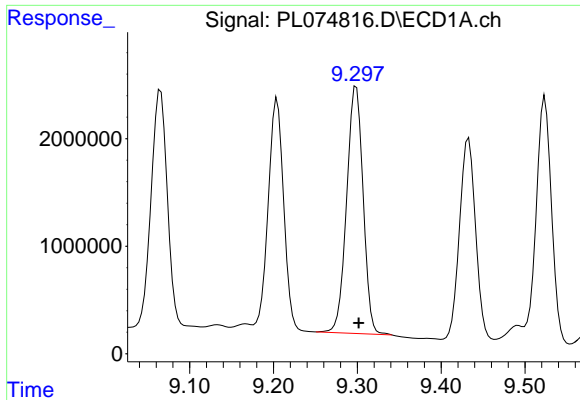
#14 Endrin

R.T.: 9.065 min
 Delta R.T.: -0.003 min
 Response: 29245449
 Conc: 70.87 ng/ml



#14 Endrin

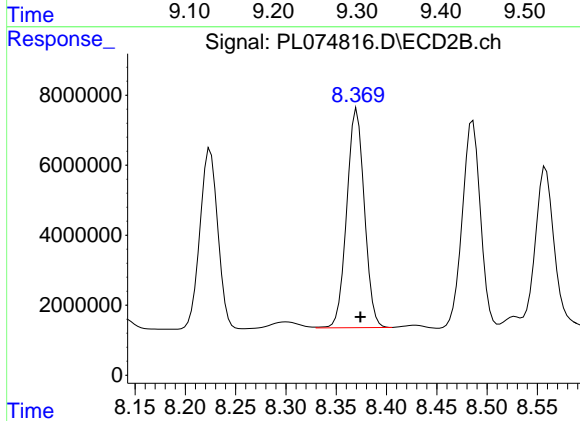
R.T.: 8.061 min
 Delta R.T.: -0.004 min
 Response: 76113589
 Conc: 72.06 ng/ml



#15 Endosulfan II

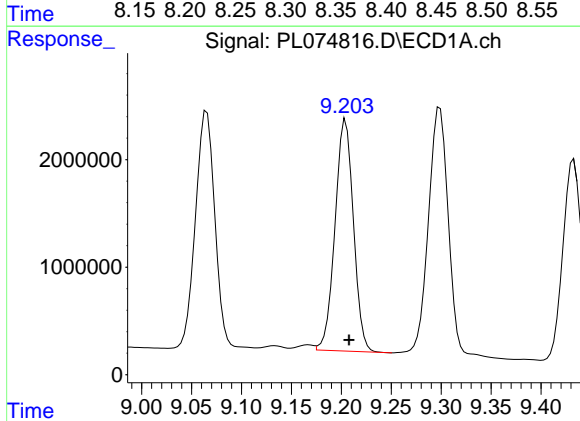
R.T.: 9.299 min
 Delta R.T.: -0.003 min
 Response: 31407523
 Conc: 71.44 ng/ml

Instrument :
 ECD_L
 ClientSampleId :



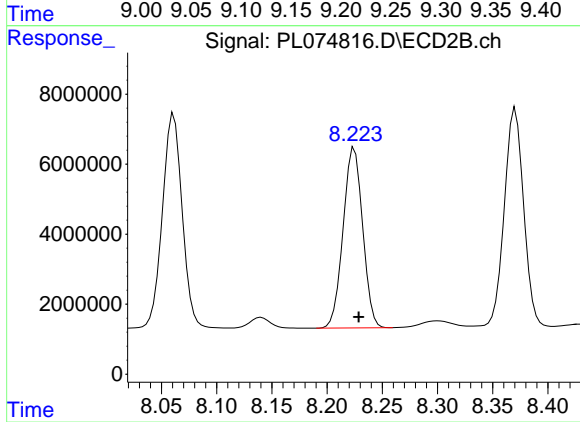
#15 Endosulfan II

R.T.: 8.371 min
 Delta R.T.: -0.003 min
 Response: 76061496
 Conc: 67.33 ng/ml



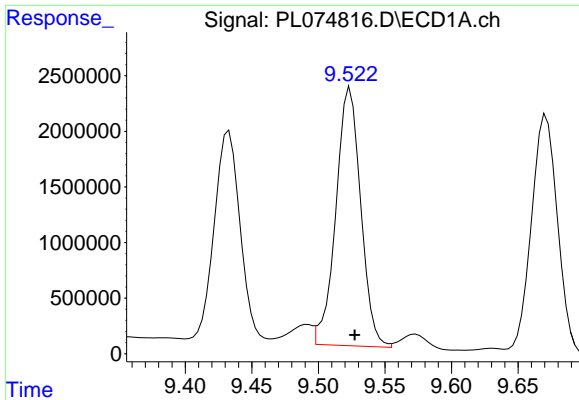
#16 4,4'-DDD

R.T.: 9.204 min
 Delta R.T.: -0.003 min
 Response: 27613845
 Conc: 61.08 ng/ml



#16 4,4'-DDD

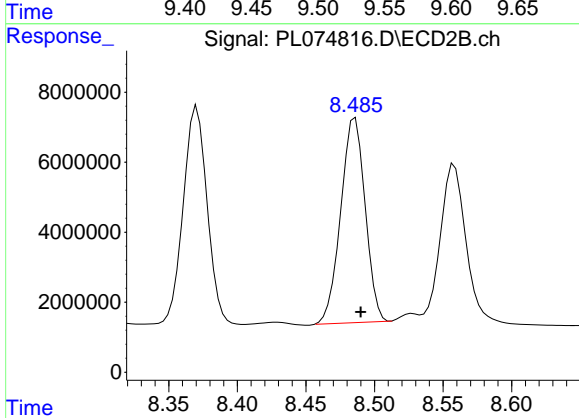
R.T.: 8.225 min
 Delta R.T.: -0.004 min
 Response: 63510732
 Conc: 64.47 ng/ml



#17 4,4'-DDT

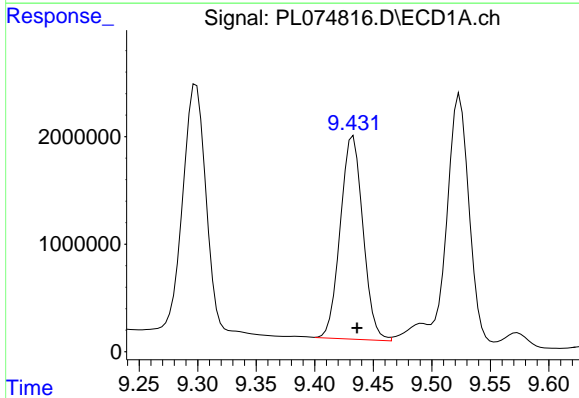
R.T.: 9.524 min
Delta R.T.: -0.004 min
Response: 30195193
Conc: 65.69 ng/ml

Instrument :
ECD_L
ClientSampleId :



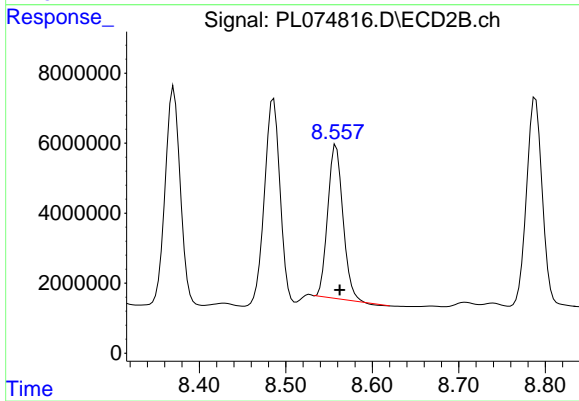
#17 4,4'-DDT

R.T.: 8.486 min
Delta R.T.: -0.004 min
Response: 72538224
Conc: 72.50 ng/ml



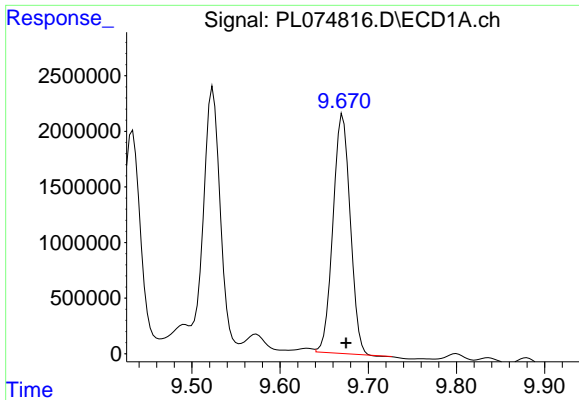
#18 Endrin aldehyde

R.T.: 9.433 min
Delta R.T.: -0.003 min
Response: 25482491
Conc: 72.00 ng/ml



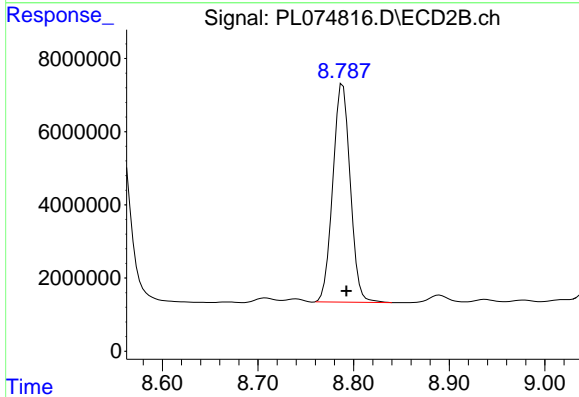
#18 Endrin aldehyde

R.T.: 8.558 min
Delta R.T.: -0.004 min
Response: 53174493
Conc: 66.58 ng/ml

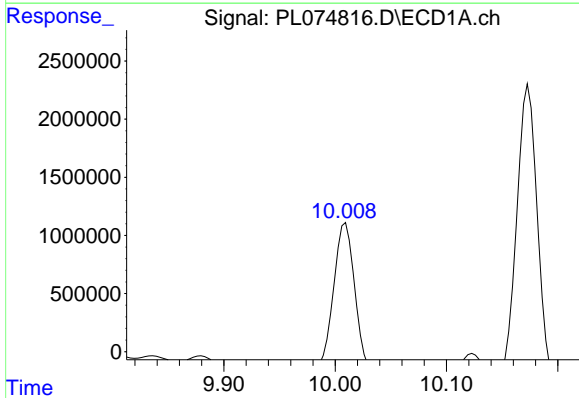


#19 Endosulfan Sulfate
 R.T.: 9.671 min
 Delta R.T.: -0.004 min
 Response: 29162491
 Conc: 64.52 ng/ml

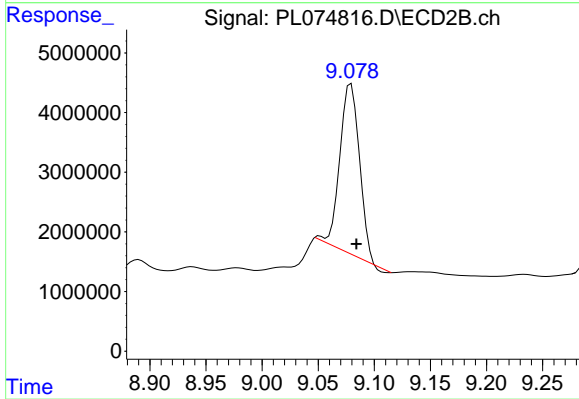
Instrument :
 ECD_L
 ClientSampleId :



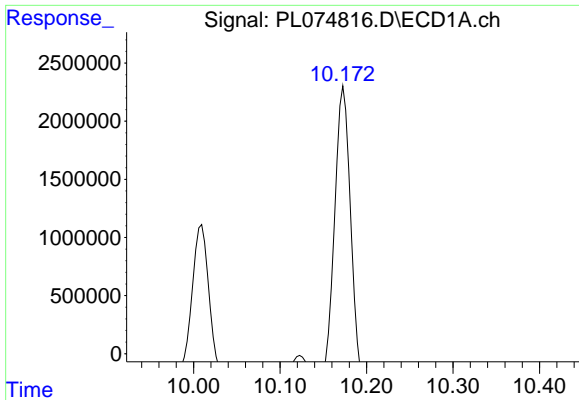
#19 Endosulfan Sulfate
 R.T.: 8.789 min
 Delta R.T.: -0.004 min
 Response: 75343277
 Conc: 69.21 ng/ml



#20 Methoxychlor
 R.T.: 10.009 min
 Delta R.T.: -0.004 min
 Response: 16567350
 Conc: 67.65 ng/ml



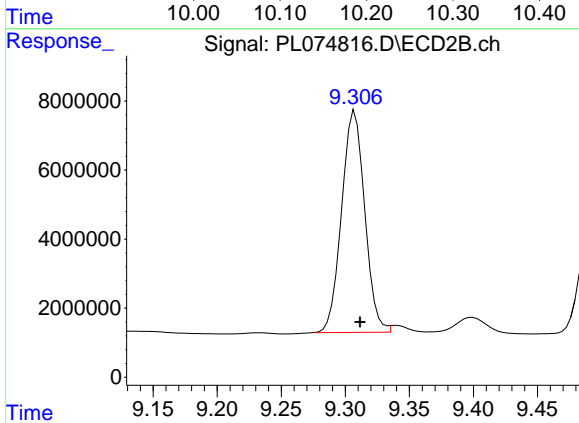
#20 Methoxychlor
 R.T.: 9.079 min
 Delta R.T.: -0.005 min
 Response: 34696742
 Conc: 59.37 ng/ml



#21 Endrin ketone

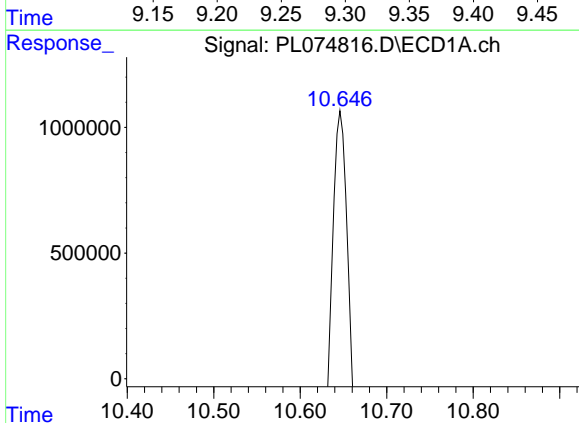
R.T.: 10.174 min
 Delta R.T.: -0.003 min
 Response: 32155448
 Conc: 62.70 ng/ml

Instrument :
 ECD_L
 ClientSampleId :



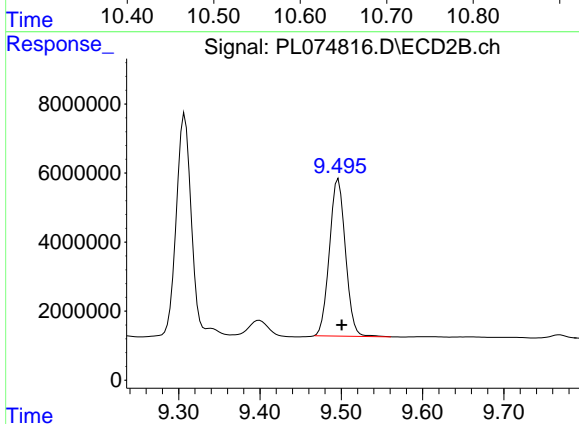
#21 Endrin ketone

R.T.: 9.307 min
 Delta R.T.: -0.004 min
 Response: 80529800
 Conc: 72.23 ng/ml



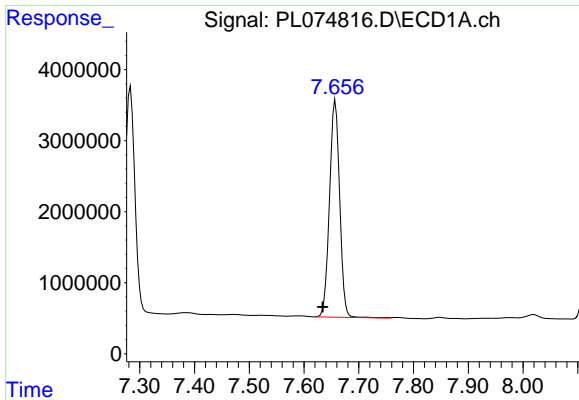
#22 Mirex

R.T.: 10.647 min
 Delta R.T.: -0.004 min
 Response: 25010143
 Conc: 61.98 ng/ml



#22 Mirex

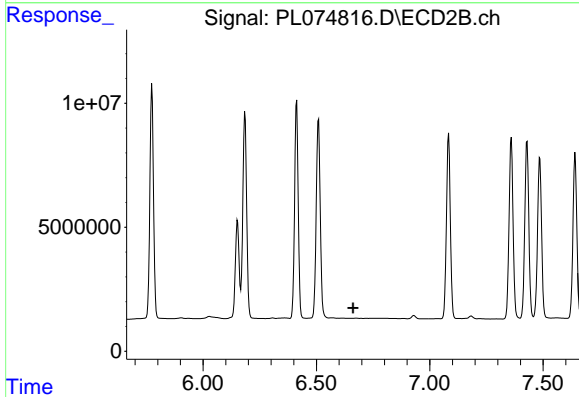
R.T.: 9.497 min
 Delta R.T.: -0.004 min
 Response: 62354600
 Conc: 64.38 ng/ml



#24 Chlordane-2

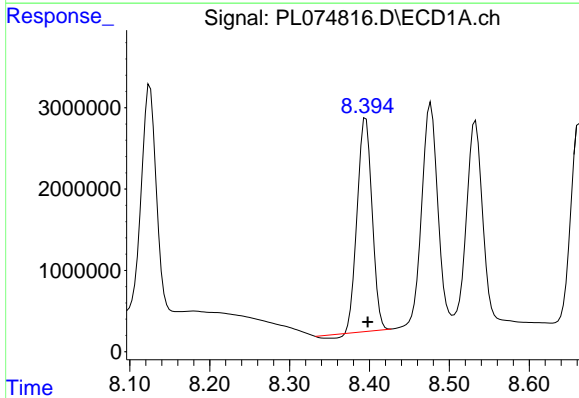
R.T.: 7.657 min
 Delta R.T.: 0.023 min
 Response: 39413882
 Conc: 1778.28 ng/m

Instrument :
 ECD_L
 ClientSampleId :



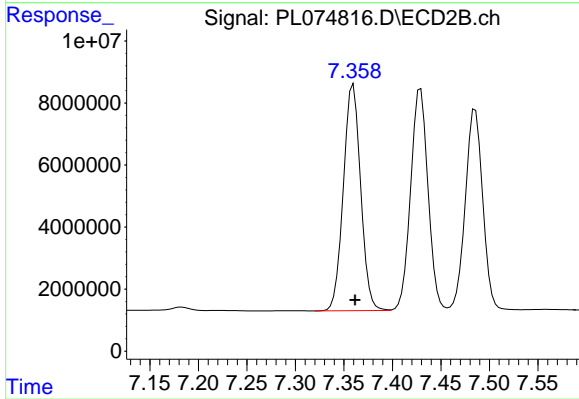
#24 Chlordane-2

R.T.: 0.000 min
 Exp R.T. : 6.662 min
 Response: 0
 Conc: N.D.



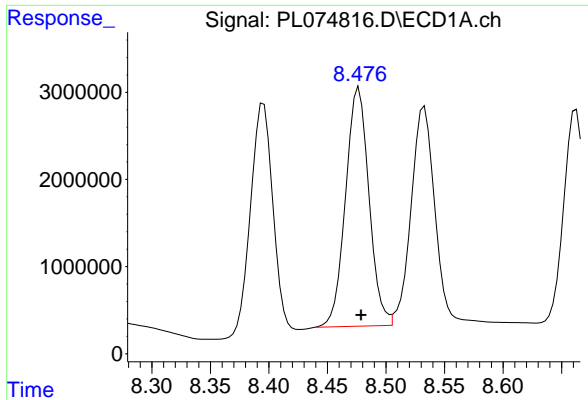
#25 Chlordane-3

R.T.: 8.395 min
 Delta R.T.: -0.002 min
 Response: 33628711
 Conc: 491.22 ng/ml



#25 Chlordane-3

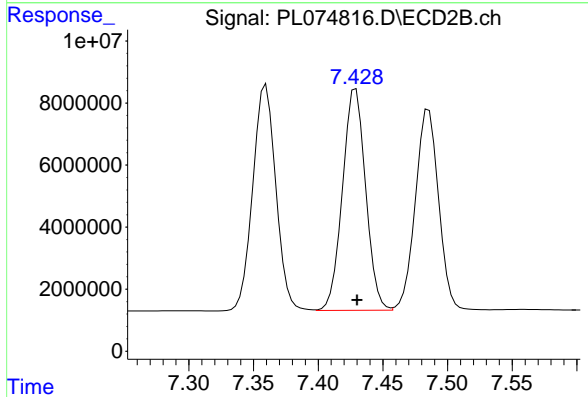
R.T.: 7.360 min
 Delta R.T.: -0.002 min
 Response: 90405386
 Conc: 696.55 ng/ml



#26 Chlordane-4

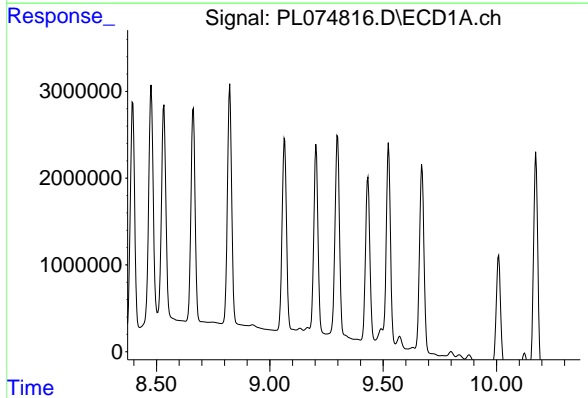
R.T.: 8.477 min
 Delta R.T.: -0.002 min
 Response: 38173069
 Conc: 396.23 ng/ml

Instrument :
 ECD_L
 ClientSampleId :



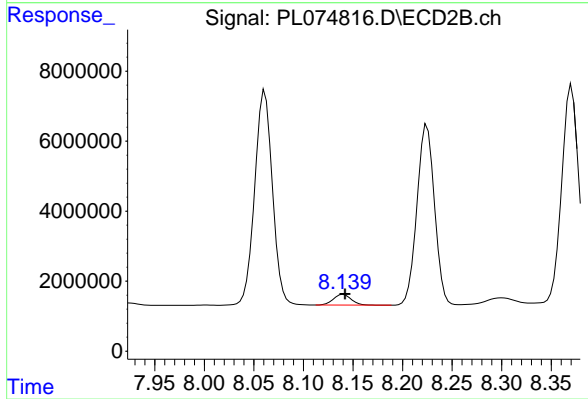
#26 Chlordane-4

R.T.: 7.429 min
 Delta R.T.: 0.000 min
 Response: 88855649
 Conc: 648.17 ng/ml



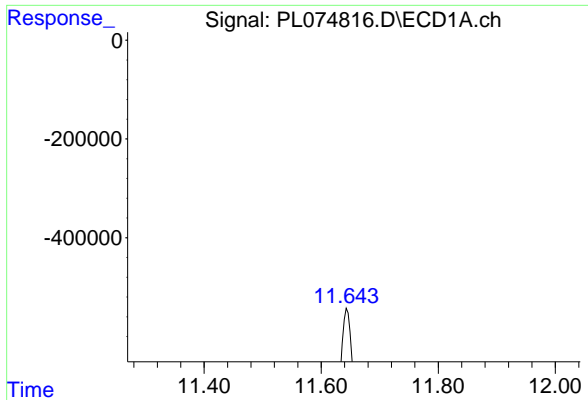
#27 Chlordane-5

R.T.: 0.000 min
 Exp R.T. : 9.371 min
 Response: 0
 Conc: N.D.



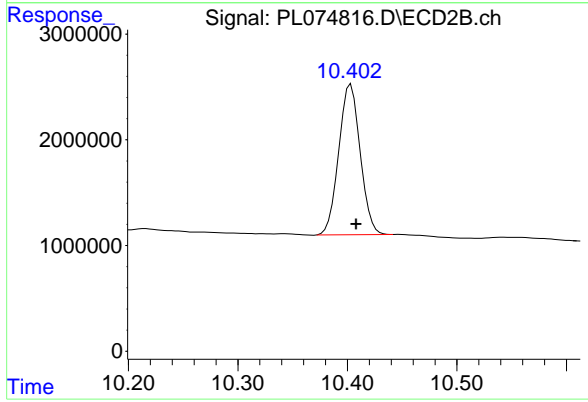
#27 Chlordane-5

R.T.: 8.140 min
 Delta R.T.: -0.002 min
 Response: 3859265
 Conc: 104.38 ng/ml



#28 Decachlorobiphenyl
R.T.: 11.645 min
Delta R.T.: -0.006 min
Response: 7979404
Conc: 17.87 ng/ml

Instrument :
ECD_L
ClientSampleId :



#28 Decachlorobiphenyl
R.T.: 10.403 min
Delta R.T.: -0.005 min
Response: 19363323
Conc: 18.87 ng/ml