

Data Path : Z:\pestpcbsrv\HPCHEM1\ECD_L\Data\PL051919\
 Data File : PL048723.D
 Signal(s) : Signal #1: ECD1A.ch Signal #2: ECD2B.ch
 Acq On : 18 May 2019 11:30
 Operator : SM\AJ
 Sample : PEM
 Misc :
 ALS Vial : 3 Sample Multiplier: 1

Instrument :
 ECD_L
 ClientSampled :
 PEM

Manual Integrations
 APPROVED

Ankita
 5/20/2019 1:58:13 PM

Integration File signal 1: autoint1.e
 Integration File signal 2: autoint2.e
 Quant Time: May 20 04:51:38 2019
 Quant Method : Z:\pestpcbsrv\HPCHEM1\ECD_L\methods\PL050119.M
 Quant Title : GC Extractables
 QLast Update : Thu May 02 09:36:55 2019
 Response via : Initial Calibration
 Integrator: ChemStation

Volume Inj. : 1 µl
 Signal #1 Phase : ZB-MR1 Signal #2 Phase: ZB-MR1
 Signal #1 Info : 30M x 0.32mm x0.2 Signal #2 Info : 30M x 0.32mm x0.5µm

Compound	RT#1	RT#2	Resp#1	Resp#2	ng/ml	ng/ml

System Monitoring Compounds						
1) SA Tetrachlo...	3.327	3.938	189.1E6	50799524	19.519	20.394
28) SA Decachlor...	7.995	8.975	219.7E6	60956458	21.847	22.965
Target Compounds						
2) A alpha-BHC	3.755	4.326	133.8E6	31034979	8.651	8.837
3) MA gamma-BHC...	4.031	4.610	157.9E6	30209448	11.110	9.249
6) B beta-BHC	4.283	4.783	55895267	14803797	9.471m	9.514m
12) B 4,4'-DDE	5.436	6.266	1582760	573039	0.125m	0.208m#
14) MA Endrin	5.813	6.632	594.8E6	128.8E6	48.860	49.384
16) A 4,4'-DDD	5.959	6.759	4134715	439411	0.425m	0.196m#
17) MA 4,4'-DDT	6.183	7.056	1036.3E6	251.6E6	103.154	107.218
20) A Methoxychlor	6.728	7.516	1305.4E6	341.9E6	239.746	250.468
21) B Endrin ke...	6.946	7.656	5085925	844219	0.436m	0.323m#

(f)=RT Delta > 1/2 Window (#)=Amounts differ by > 25% (m)=manual int.

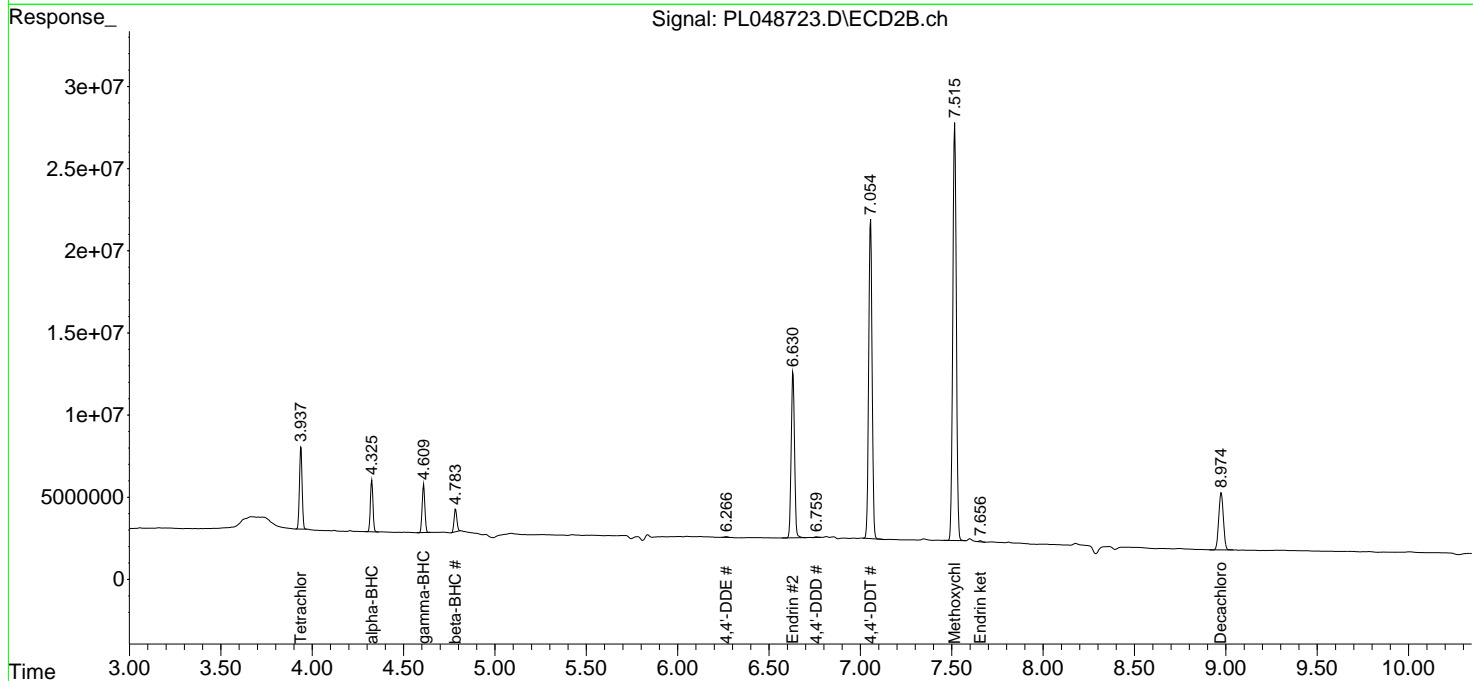
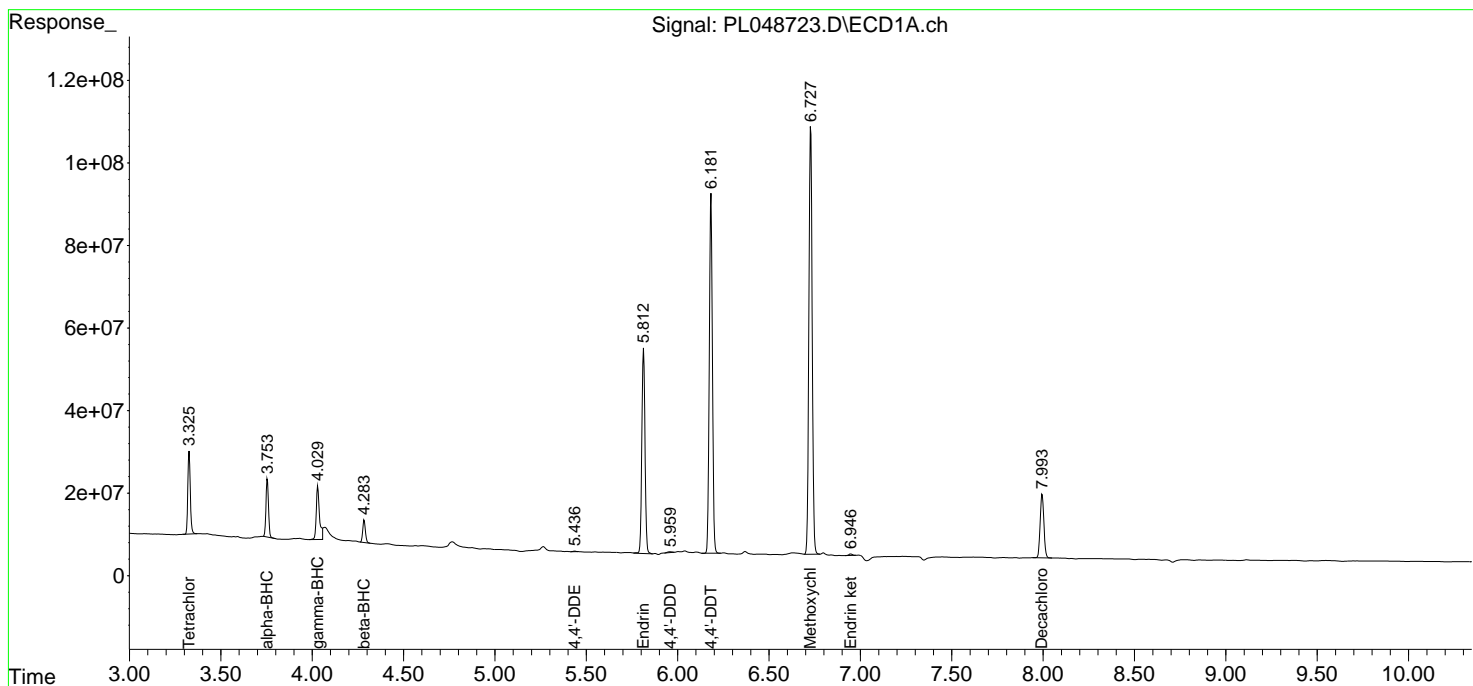
Data Path : Z:\pestpcbsrv\HPCHEM1\ECD_L\Data\PL051919\
 Data File : PL048723.D
 Signal(s) : Signal #1: ECD1A.ch Signal #2: ECD2B.ch
 Acq On : 18 May 2019 11:30
 Operator : SM\AJ
 Sample : PEM
 Misc :
 ALS Vial : 3 Sample Multiplier: 1

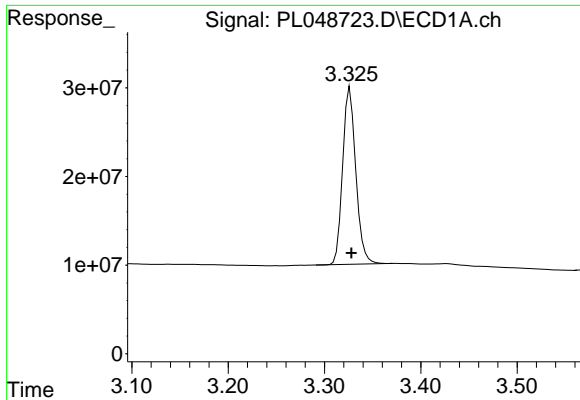
Instrument :
 ECD_L
 ClientSampled :
 PEM

Manual Integrations
APPROVED
 Ankita
 5/20/2019 1:58:13 PM

Integration File signal 1: autoint1.e
 Integration File signal 2: autoint2.e
 Quant Time: May 20 04:51:38 2019
 Quant Method : Z:\pestpcbsrv\HPCHEM1\ECD_L\methods\PL050119.M
 Quant Title : GC Extractables
 QLast Update : Thu May 02 09:36:55 2019
 Response via : Initial Calibration
 Integrator: ChemStation

Volume Inj. : 1 µl
 Signal #1 Phase : ZB-MR2 Signal #2 Phase: ZB-MR1
 Signal #1 Info : 30M x 0.32mm x0.2 Signal #2 Info : 30M x 0.32mm x0.5µm



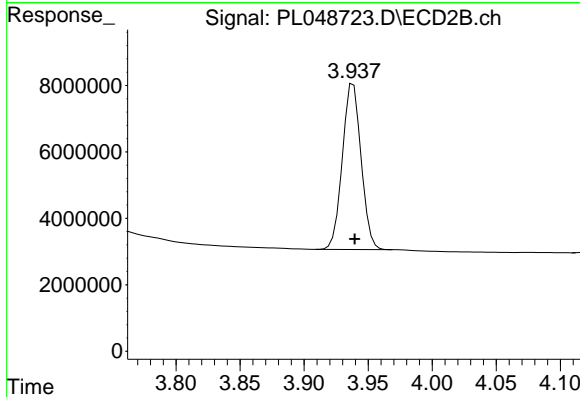


#1 Tetrachloro-m-xylene

R.T.: 3.327 min
 Delta R.T.: -0.001 min
 Response: 189074223
 Conc: 19.52 ng/ml

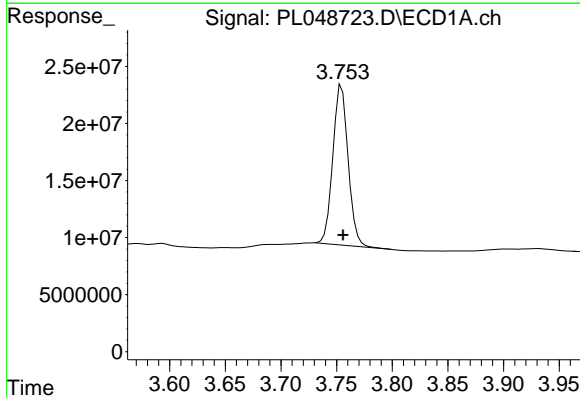
Instrument :
 ECD_L
 ClientSampled :
 PEM

Manual Integrations
 APPROVED
 Ankita
 5/20/2019 1:58:13 PM



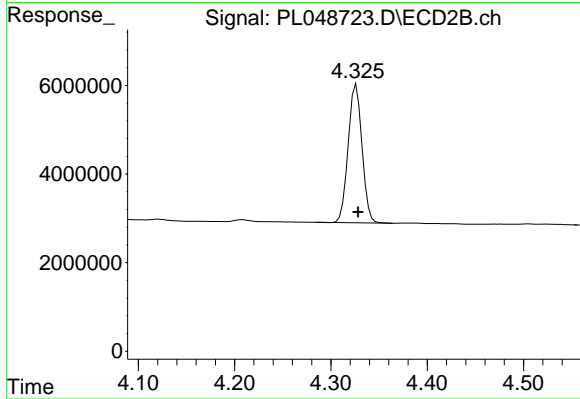
#1 Tetrachloro-m-xylene

R.T.: 3.938 min
 Delta R.T.: -0.001 min
 Response: 50799524
 Conc: 20.39 ng/ml



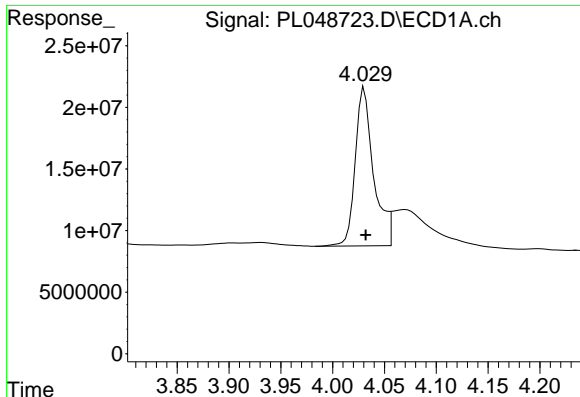
#2 alpha-BHC

R.T.: 3.755 min
 Delta R.T.: -0.001 min
 Response: 133807582
 Conc: 8.65 ng/ml



#2 alpha-BHC

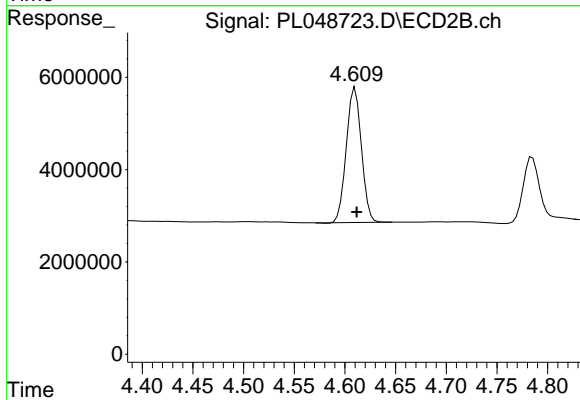
R.T.: 4.326 min
 Delta R.T.: -0.002 min
 Response: 31034979
 Conc: 8.84 ng/ml



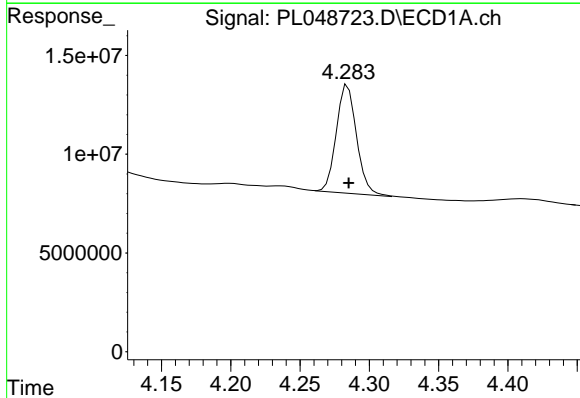
#3 gamma-BHC (Lindane)
 R.T.: 4.031 min
 Delta R.T.: -0.001 min
 Response: 157863120
 Conc: 11.11 ng/ml

Instrument :
 ECD_L
 ClientSampled :
 PEM

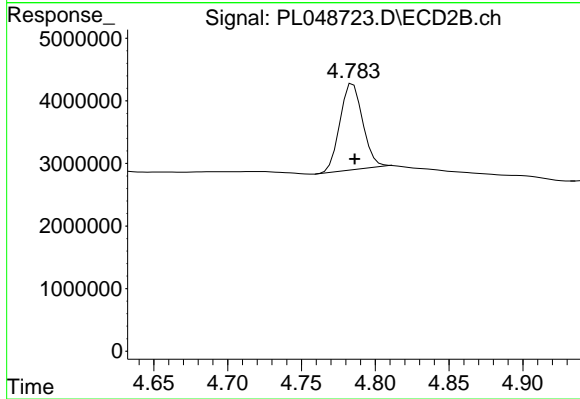
Manual Integrations
 APPROVED
 Ankita
 5/20/2019 1:58:13 PM



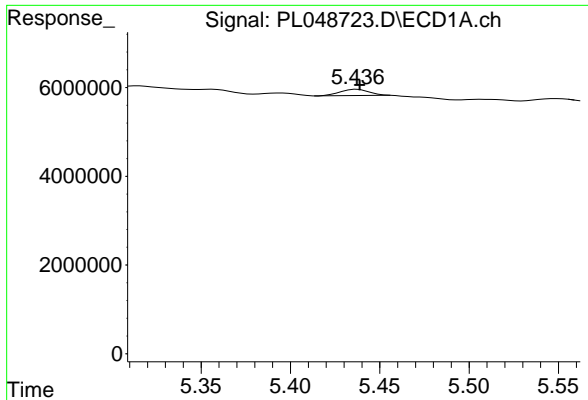
#3 gamma-BHC (Lindane)
 R.T.: 4.610 min
 Delta R.T.: -0.001 min
 Response: 30209448
 Conc: 9.25 ng/ml



#6 beta-BHC
 R.T.: 4.283 min
 Delta R.T.: -0.002 min
 Response: 55895267
 Conc: 9.47 ng/ml m



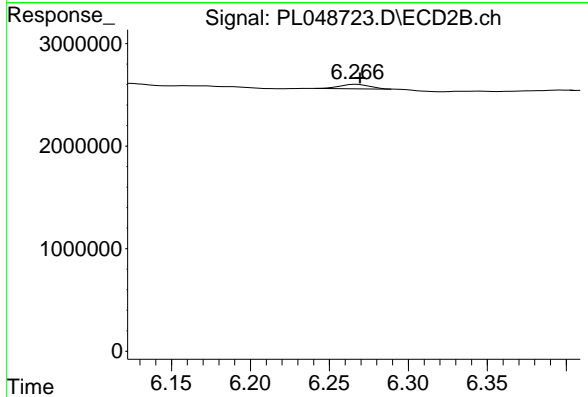
#6 beta-BHC
 R.T.: 4.783 min
 Delta R.T.: -0.003 min
 Response: 14803797
 Conc: 9.51 ng/ml m



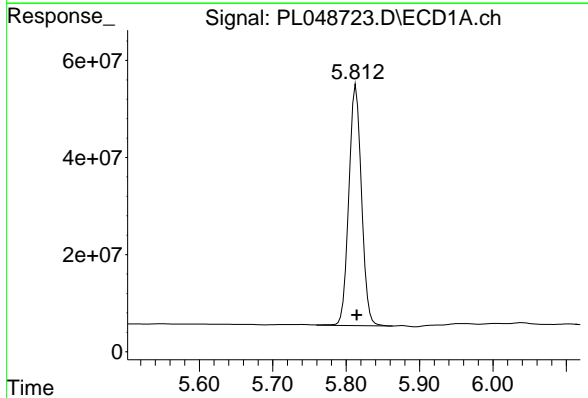
#12 4,4'-DDE
 R.T.: 5.436 min
 Delta R.T.: -0.003 min
 Response: 1582760
 Conc: 0.12 ng/ml m

Instrument :
 ECD_L
ClientSampled :
 PEM

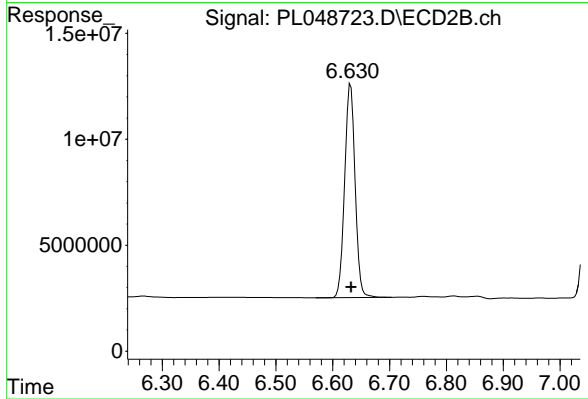
Manual Integrations
APPROVED
 Ankita
 5/20/2019 1:58:13 PM



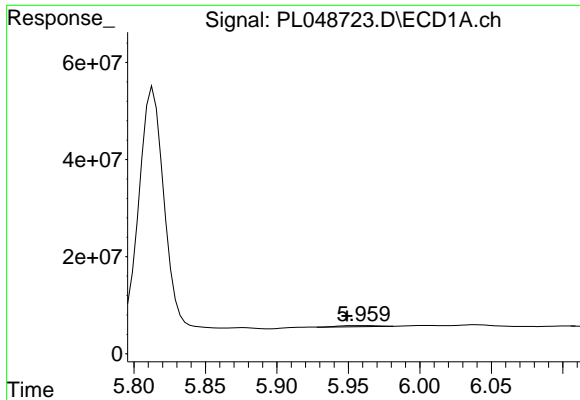
#12 4,4'-DDE
 R.T.: 6.266 min
 Delta R.T.: -0.003 min
 Response: 573039
 Conc: 0.21 ng/ml m



#14 Endrin
 R.T.: 5.813 min
 Delta R.T.: 0.000 min
 Response: 594817201
 Conc: 48.86 ng/ml



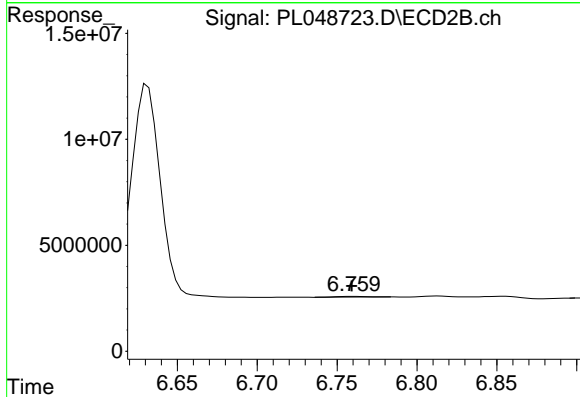
#14 Endrin
 R.T.: 6.632 min
 Delta R.T.: 0.000 min
 Response: 128765328
 Conc: 49.38 ng/ml



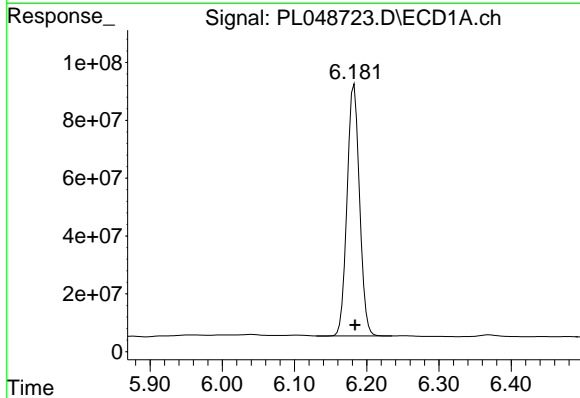
#16 4,4'-DDD
 R.T.: 5.959 min
 Delta R.T.: 0.010 min
 Response: 4134715
 Conc: 0.42 ng/ml m

Instrument :
 ECD_L
 ClientSampled :
 PEM

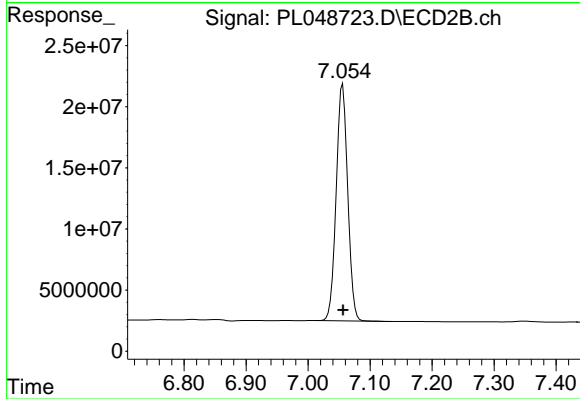
Manual Integrations
 APPROVED
 Ankita
 5/20/2019 1:58:13 PM



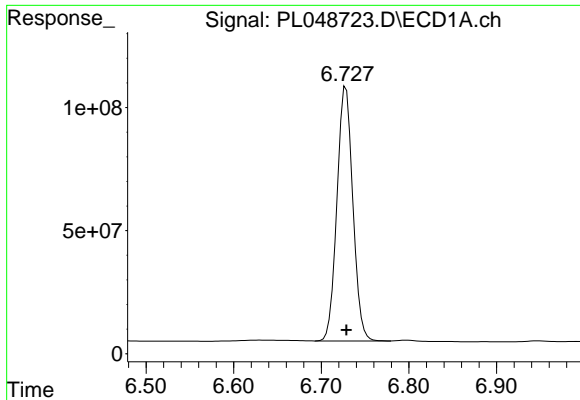
#16 4,4'-DDD
 R.T.: 6.759 min
 Delta R.T.: 0.000 min
 Response: 439411
 Conc: 0.20 ng/ml m



#17 4,4'-DDT
 R.T.: 6.183 min
 Delta R.T.: -0.001 min
 Response: 1036333003
 Conc: 103.15 ng/ml



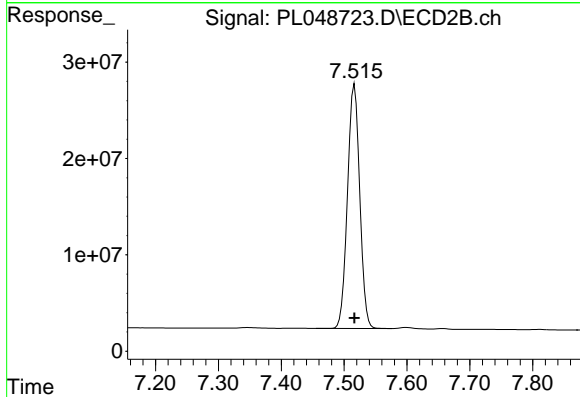
#17 4,4'-DDT
 R.T.: 7.056 min
 Delta R.T.: 0.000 min
 Response: 251600535
 Conc: 107.22 ng/ml



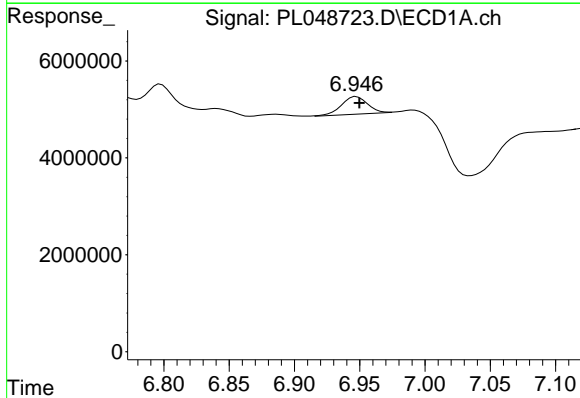
#20 Methoxychlor
 R.T.: 6.728 min
 Delta R.T.: 0.000 min
 Response: 1305355627
 Conc: 239.75 ng/ml

Instrument :
 ECD_L
 ClientSampled :
 PEM

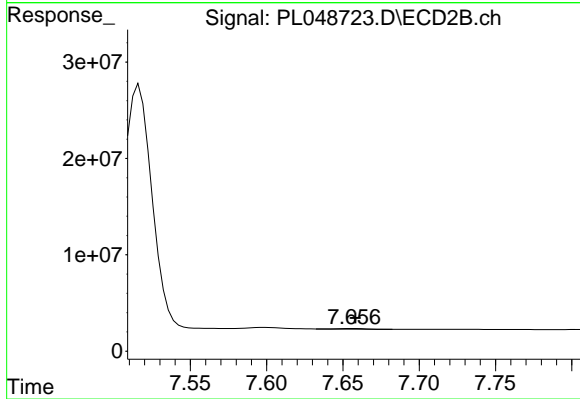
Manual Integrations
 APPROVED
 Ankita
 5/20/2019 1:58:13 PM



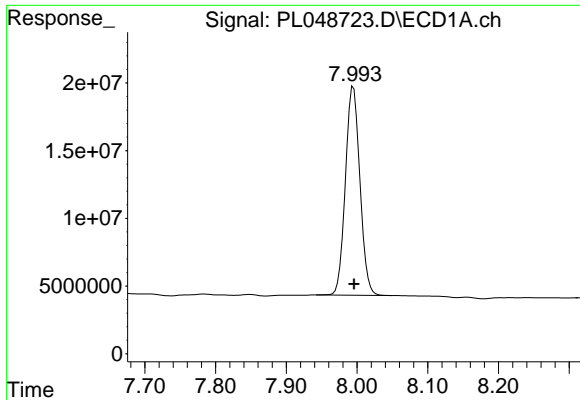
#20 Methoxychlor
 R.T.: 7.516 min
 Delta R.T.: 0.000 min
 Response: 341934307
 Conc: 250.47 ng/ml



#21 Endrin ketone
 R.T.: 6.946 min
 Delta R.T.: -0.004 min
 Response: 5085925
 Conc: 0.44 ng/ml m



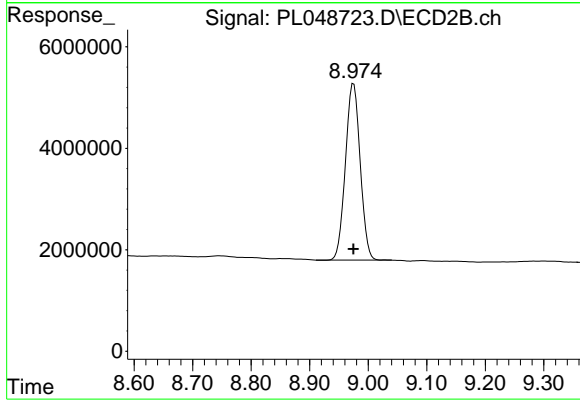
#21 Endrin ketone
 R.T.: 7.656 min
 Delta R.T.: -0.003 min
 Response: 844219
 Conc: 0.32 ng/ml m



#28 Decachlorobiphenyl
R.T.: 7.995 min
Delta R.T.: 0.000 min
Response: 219654432
Conc: 21.85 ng/ml

Instrument :
ECD_L
ClientSampled :
PEM

Manual Integrations
APPROVED
Ankita
5/20/2019 1:58:13 PM



#28 Decachlorobiphenyl
R.T.: 8.975 min
Delta R.T.: 0.000 min
Response: 60956458
Conc: 22.97 ng/ml