

Data Path : Z:\pestpcbsrv\HPCHEM1\ECD\_L\Data\PL051919\  
 Data File : PL048739.D  
 Signal(s) : Signal #1: ECD1A.ch Signal #2: ECD2B.ch  
 Acq On : 18 May 2019 17:07  
 Operator : SM\AJ  
 Sample : K2648-01  
 Misc :  
 ALS Vial : 17 Sample Multiplier: 1

**Instrument :**  
 ECD\_L  
**ClientSampled :**  
 TR-05-051619

**Manual Integrations**  
**APPROVED**  
 Ankita  
 5/20/2019 1:58:32 PM

Integration File signal 1: autoint1.e  
 Integration File signal 2: autoint2.e  
 Quant Time: May 20 04:54:21 2019  
 Quant Method : Z:\pestpcbsrv\HPCHEM1\ECD\_L\methods\PL050119.M  
 Quant Title : GC Extractables  
 QLast Update : Thu May 02 09:36:55 2019  
 Response via : Initial Calibration  
 Integrator: ChemStation

Volume Inj. : 1 µl  
 Signal #1 Phase : ZB-MR2 Signal #2 Phase: ZB-MR1  
 Signal #1 Info : 30M x 0.32mm x0.2 Signal #2 Info : 30M x 0.32mm x0.5µm

Compound	RT#1	RT#2	Resp#1	Resp#2	ng/ml	ng/ml
-----						
System Monitoring Compounds						
1) SA Tetrachlo...	3.326	3.938	90552108	26001384	9.348	10.439
28) SA Decachlor...	7.995	8.974	92661623	31287107	9.216	11.787 #
Target Compounds						
10) B gamma-Chl...	5.217	6.035	4572794	3066178	0.342m	0.996m#
11) B alpha-Chl...	5.267	6.110	17655072	9607284	1.350m	3.131 #
-----						

(f)=RT Delta > 1/2 Window (#)=Amounts differ by > 25% (m)=manual int.

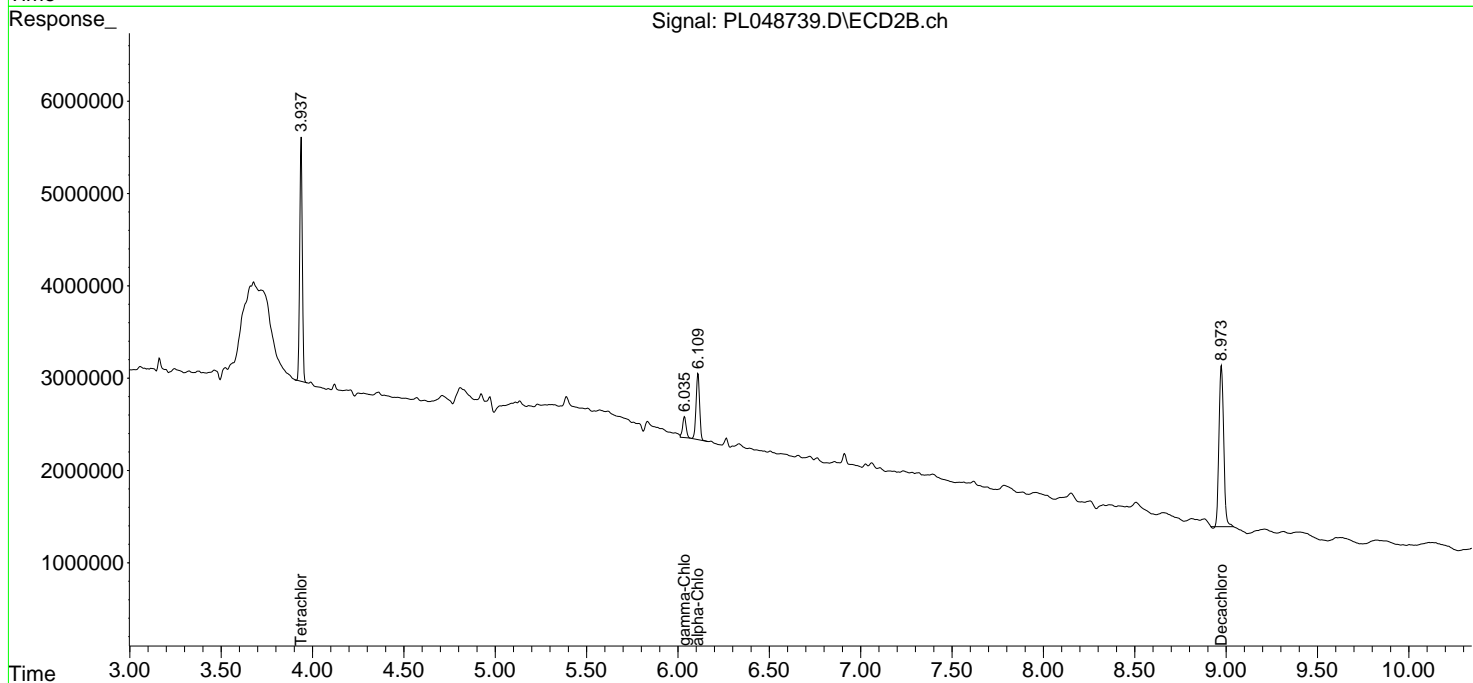
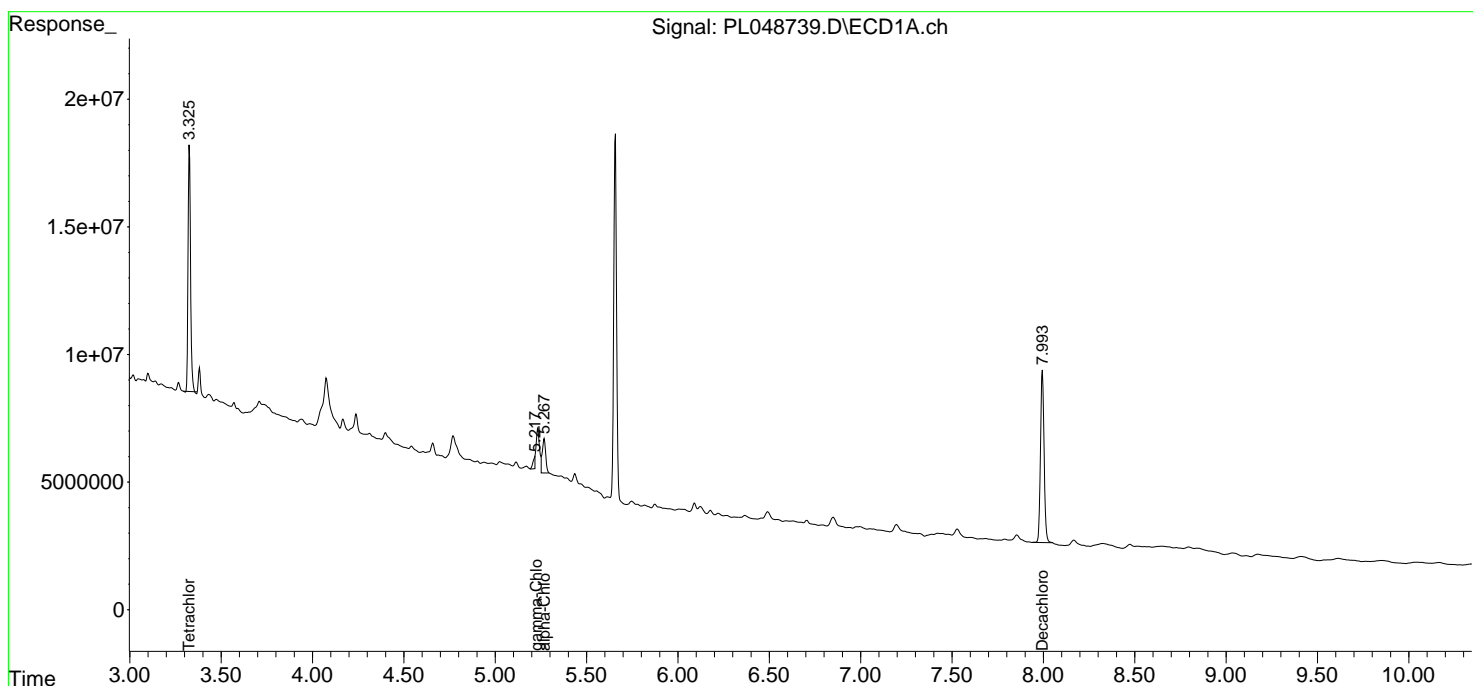
Data Path : Z:\pestpcbsrv\HPCHEM1\ECD\_L\Data\PL051919\  
 Data File : PL048739.D  
 Signal(s) : Signal #1: ECD1A.ch Signal #2: ECD2B.ch  
 Acq On : 18 May 2019 17:07  
 Operator : SM\AJ  
 Sample : K2648-01  
 Misc :  
 ALS Vial : 17 Sample Multiplier: 1

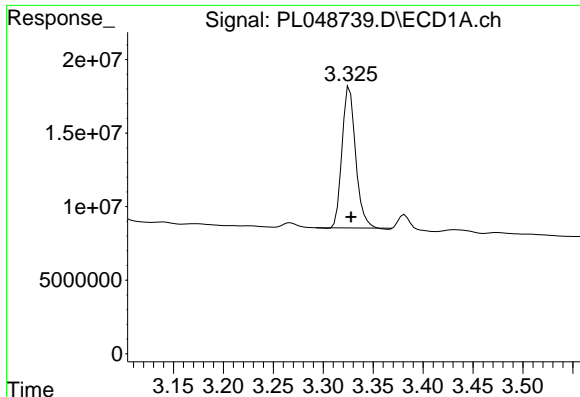
Instrument :  
 ECD\_L  
 Client Sampled :  
 TR-05-051619

Manual Integrations  
**APPROVED**  
 Ankita  
 5/20/2019 1:58:32 PM

Integration File signal 1: autoint1.e  
 Integration File signal 2: autoint2.e  
 Quant Time: May 20 04:54:21 2019  
 Quant Method : Z:\pestpcbsrv\HPCHEM1\ECD\_L\methods\PL050119.M  
 Quant Title : GC Extractables  
 QLast Update : Thu May 02 09:36:55 2019  
 Response via : Initial Calibration  
 Integrator: ChemStation

Volume Inj. : 1 µl  
 Signal #1 Phase : ZB-MR2 Signal #2 Phase: ZB-MR1  
 Signal #1 Info : 30M x 0.32mm x0.2 Signal #2 Info : 30M x 0.32mm x0.5µm





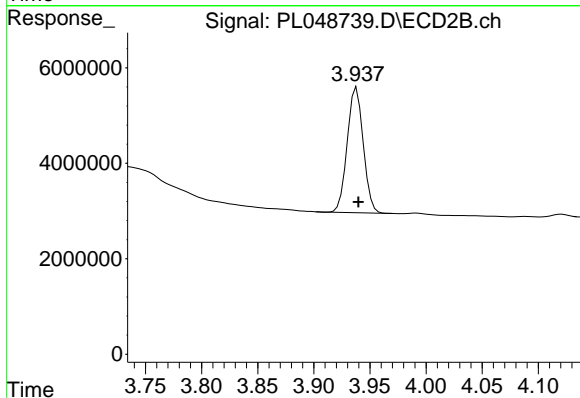
#1 Tetrachloro-m-xylene

R.T.: 3.326 min  
 Delta R.T.: -0.002 min  
 Response: 90552108  
 Conc: 9.35 ng/ml

Instrument :  
 ECD\_L  
 ClientSampled :  
 TR-05-051619

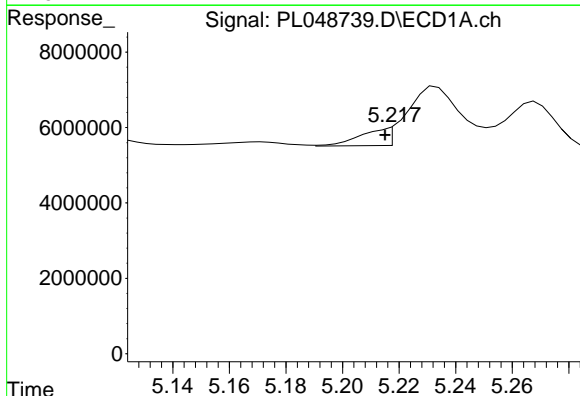
Manual Integrations  
 APPROVED

Ankita  
 5/20/2019 1:58:32 PM



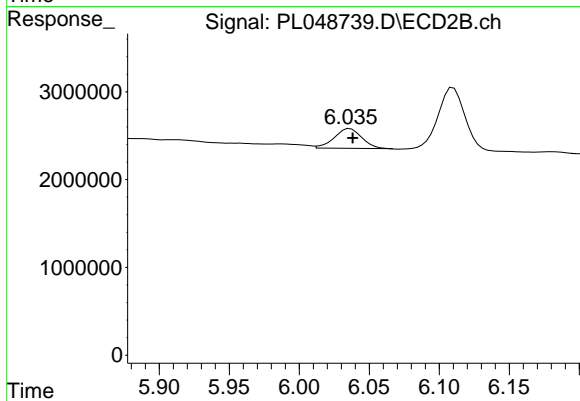
#1 Tetrachloro-m-xylene

R.T.: 3.938 min  
 Delta R.T.: -0.002 min  
 Response: 26001384  
 Conc: 10.44 ng/ml



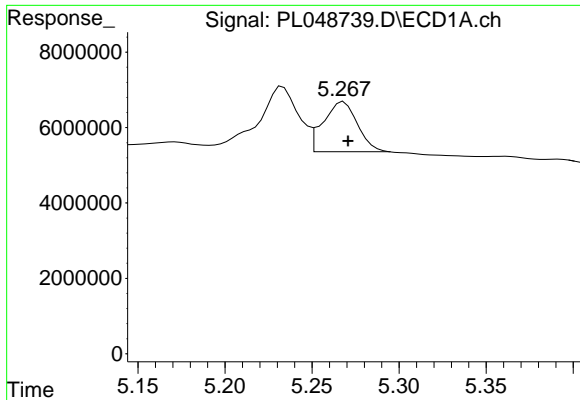
#10 gamma-Chlordane

R.T.: 5.217 min  
 Delta R.T.: 0.002 min  
 Response: 4572794  
 Conc: 0.34 ng/ml m



#10 gamma-Chlordane

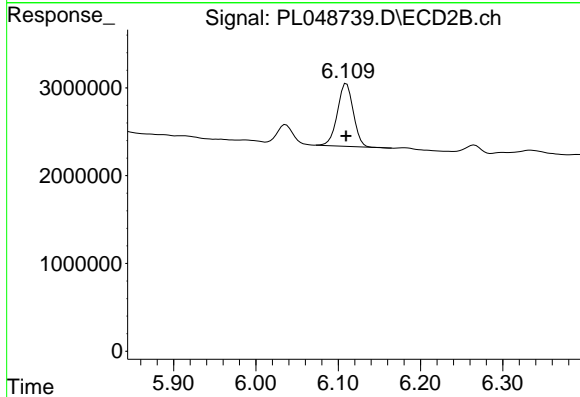
R.T.: 6.035 min  
 Delta R.T.: -0.003 min  
 Response: 3066178  
 Conc: 1.00 ng/ml m



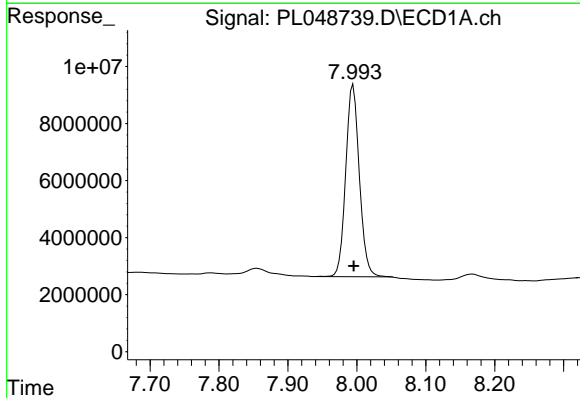
#11 alpha-Chlordane  
 R.T.: 5.267 min  
 Delta R.T.: -0.004 min  
 Response: 17655072  
 Conc: 1.35 ng/ml m

Instrument :  
 ECD\_L  
 ClientSampled :  
 TR-05-051619

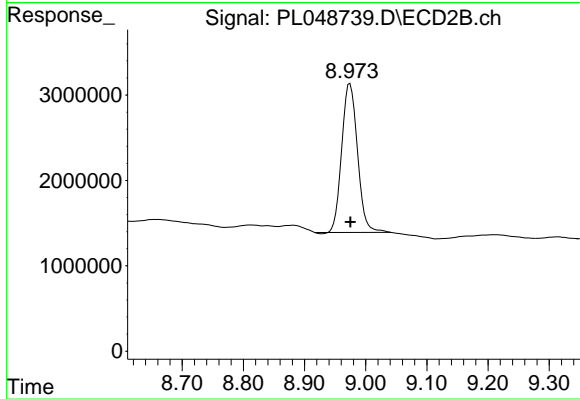
Manual Integrations  
 APPROVED  
 Ankita  
 5/20/2019 1:58:32 PM



#11 alpha-Chlordane  
 R.T.: 6.110 min  
 Delta R.T.: 0.000 min  
 Response: 9607284  
 Conc: 3.13 ng/ml



#28 Decachlorobiphenyl  
 R.T.: 7.995 min  
 Delta R.T.: -0.001 min  
 Response: 92661623  
 Conc: 9.22 ng/ml



#28 Decachlorobiphenyl  
 R.T.: 8.974 min  
 Delta R.T.: 0.000 min  
 Response: 31287107  
 Conc: 11.79 ng/ml