

Data Path : Z:\pestpcbsrv\HPCHEM1\ECD_L\Data\PL051919\
 Data File : PL048740.D
 Signal(s) : Signal #1: ECD1A.ch Signal #2: ECD2B.ch
 Acq On : 18 May 2019 17:22
 Operator : SM\AJ
 Sample : K2909-02
 Misc :
 ALS Vial : 18 Sample Multiplier: 1

Instrument :
 ECD_L
 ClientSampleId :
 20190403-COMP-CH-72-73

Integration File signal 1: autoint1.e
 Integration File signal 2: autoint2.e
 Quant Time: May 20 04:54:28 2019
 Quant Method : Z:\pestpcbsrv\HPCHEM1\ECD_L\methods\PL050119.M
 Quant Title : GC Extractables
 QLast Update : Thu May 02 09:36:55 2019
 Response via : Initial Calibration
 Integrator: ChemStation

Volume Inj. : 1 µl
 Signal #1 Phase : ZB-MR2 Signal #2 Phase: ZB-MR1
 Signal #1 Info : 30M x 0.32mm x0.2 Signal #2 Info : 30M x 0.32mm x0.5µm

Compound	RT#1	RT#2	Resp#1	Resp#2	ng/ml	ng/ml

System Monitoring Compounds						
1) SA Tetrachlo...	3.326	3.938	140.8E6	38499465	14.539	15.456
28) SA Decachlor...	7.995	8.974	79914719	26106074	7.948	9.835

Target Compounds

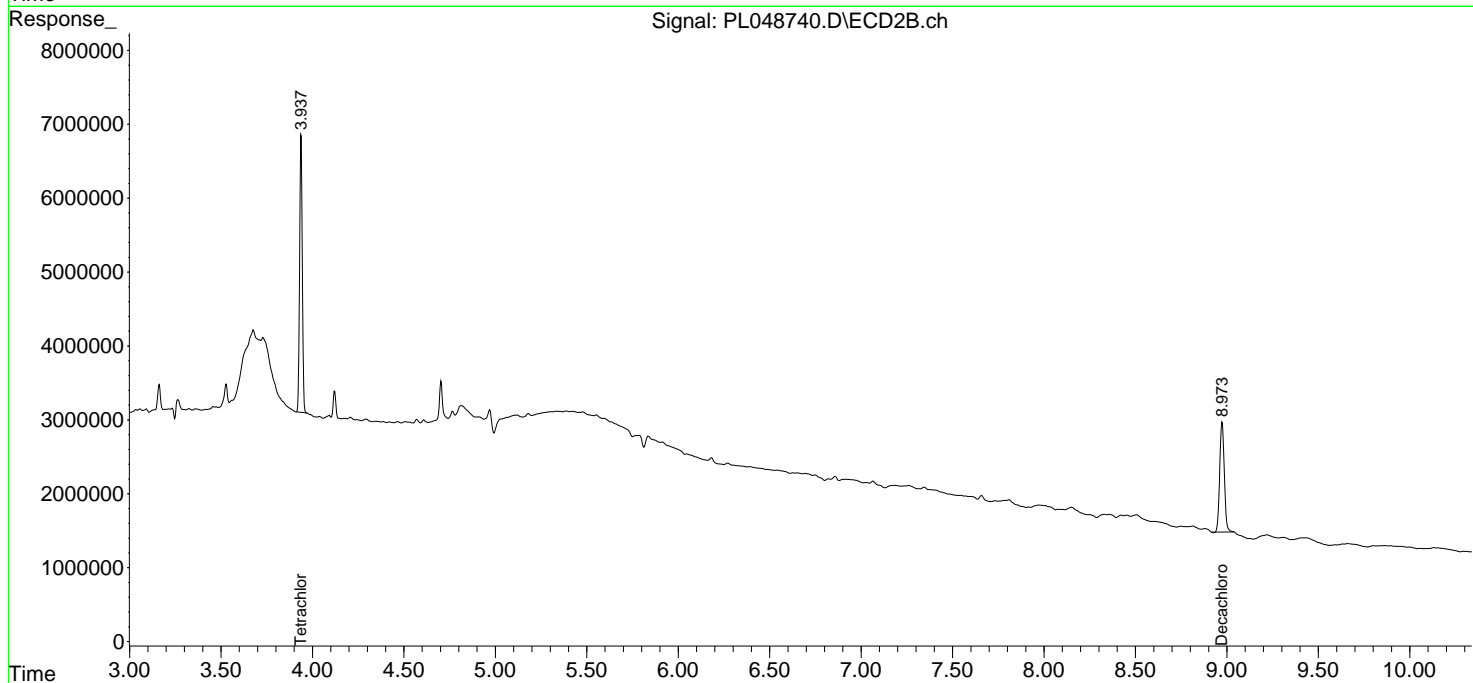
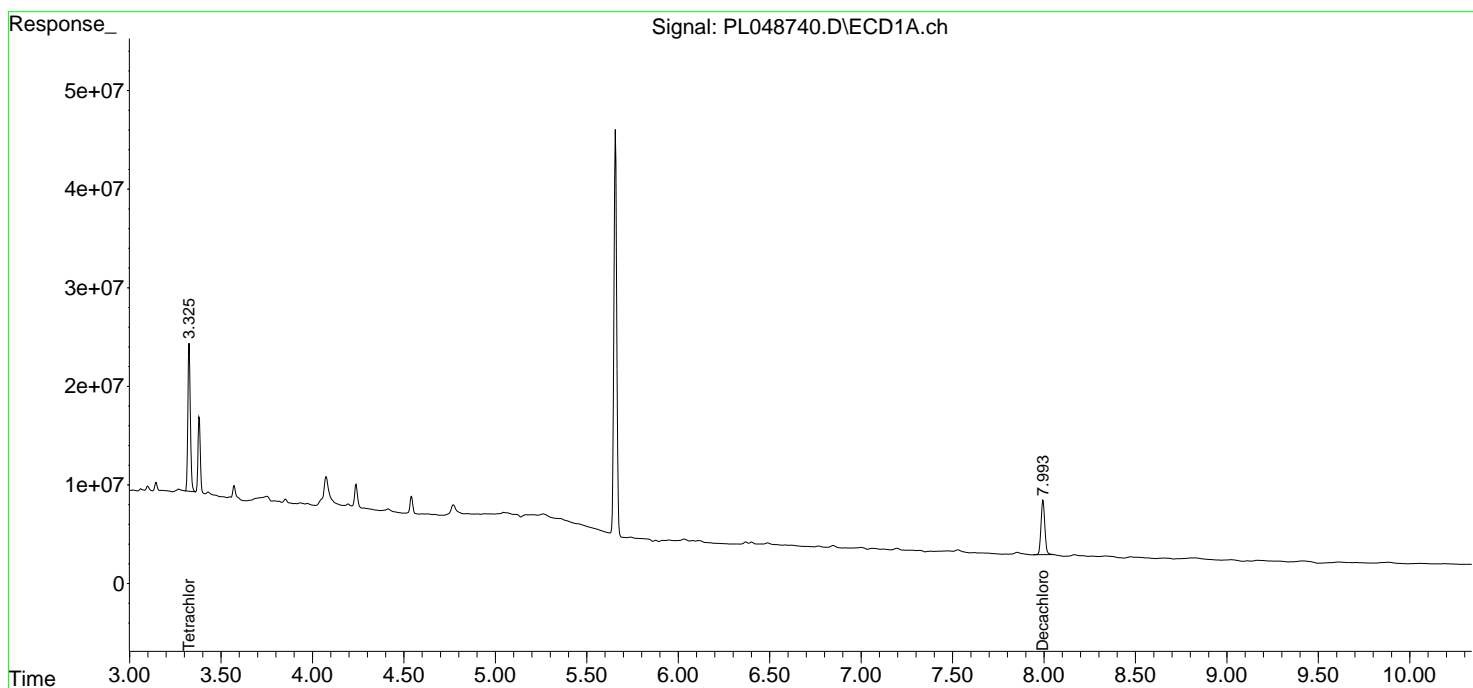
(f)=RT Delta > 1/2 Window (#)=Amounts differ by > 25% (m)=manual int.

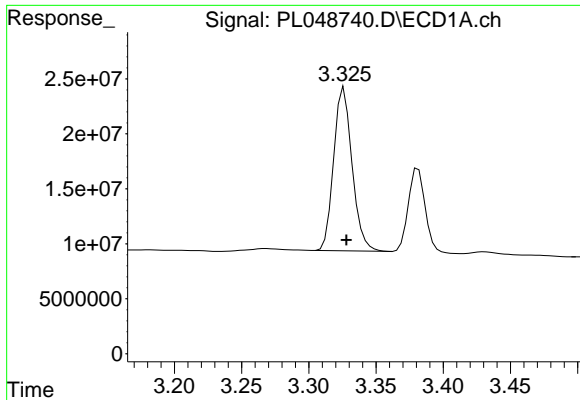
Data Path : Z:\pestpcbsrv\HPCHEM1\ECD_L\Data\PL051919\
 Data File : PL048740.D
 Signal(s) : Signal #1: ECD1A.ch Signal #2: ECD2B.ch
 Acq On : 18 May 2019 17:22
 Operator : SM\AJ
 Sample : K2909-02
 Misc :
 ALS Vial : 18 Sample Multiplier: 1

Instrument :
 ECD_L
 ClientSampled :
 20190403-COMP-CH-72-73

Integration File signal 1: autoint1.e
 Integration File signal 2: autoint2.e
 Quant Time: May 20 04:54:28 2019
 Quant Method : Z:\pestpcbsrv\HPCHEM1\ECD_L\methods\PL050119.M
 Quant Title : GC Extractables
 QLast Update : Thu May 02 09:36:55 2019
 Response via : Initial Calibration
 Integrator: ChemStation

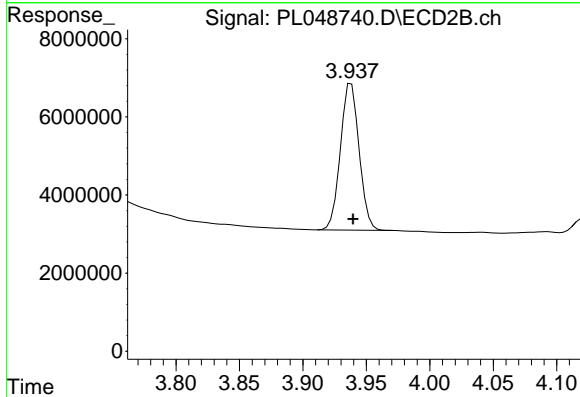
Volume Inj. : 1 µl
 Signal #1 Phase : ZB-MR2 Signal #2 Phase: ZB-MR1
 Signal #1 Info : 30M x 0.32mm x0.2 Signal #2 Info : 30M x 0.32mm x0.5µm



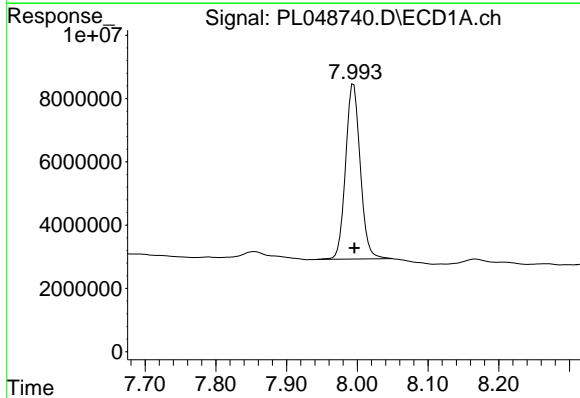


#1 Tetrachloro-m-xylene
 R.T.: 3.326 min
 Delta R.T.: -0.002 min
 Response: 140840190
 Conc: 14.54 ng/ml

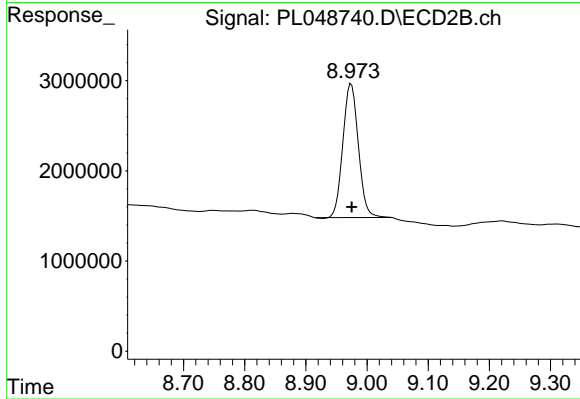
Instrument :
 ECD_L
 ClientSampleId :
 20190403-COMP-CH-72-73



#1 Tetrachloro-m-xylene
 R.T.: 3.938 min
 Delta R.T.: -0.001 min
 Response: 38499465
 Conc: 15.46 ng/ml



#28 Decachlorobiphenyl
 R.T.: 7.995 min
 Delta R.T.: 0.000 min
 Response: 79914719
 Conc: 7.95 ng/ml



#28 Decachlorobiphenyl
 R.T.: 8.974 min
 Delta R.T.: 0.000 min
 Response: 26106074
 Conc: 9.84 ng/ml