

Data Path : Z:\pestpcbsrv\HPCHEM1\ECD_L\Data\PL051923\
 Data File : PL082819.D
 Signal(s) : Signal #1: ECD1A.ch Signal #2: ECD2B.ch
 Acq On : 19 May 2023 16:05
 Operator : AR\AJ
 Sample : PTOXICC500
 Misc :
 ALS Vial : 17 Sample Multiplier: 1

Instrument :
 ECD_L
 ClientSampleId :

Integration File signal 1: autoint1.e
 Integration File signal 2: autoint2.e
 Quant Time: May 20 04:42:09 2023
 Quant Method : Z:\pestpcbsrv\HPCHEM1\ECD_L\methods\LTX051923.M
 Quant Title : GC Extractables
 QLast Update : Sat May 20 04:40:16 2023
 Response via : Initial Calibration
 Integrator: ChemStation

Volume Inj. : 2 µl
 Signal #1 Phase : Rtx-CLPesticide 1 Signal #2 Phase: Rtx-CLPesticide 1
 Signal #1 Info : 30M x 0.32mm x0.3 Signal #2 Info : 30M x 0.32mm x 0.25µm

Compound	RT#1	RT#2	Resp#1	Resp#2	ng/ml	ng/ml

System Monitoring Compounds						
1) SA Tetrachlo...	3.317	2.638	117.2E6	104.9E6	50.000	50.000
7) SA Decachlor...	8.733	7.743	82798047	97891833	50.000	50.000
Target Compounds						
2) Toxaphene-1	5.986	5.166	9145288	5564181	500.000	500.000
3) Toxaphene-2	6.801	5.522	34556967	6058530	500.000	500.000
4) Toxaphene-3	6.889	5.805	23909517	7281823	500.000	500.000
5) Toxaphene-4	6.985	6.433	14718073	23213980	500.000	500.000
6) Toxaphene-5	7.309	6.562	16907398	32574091	500.000	500.000

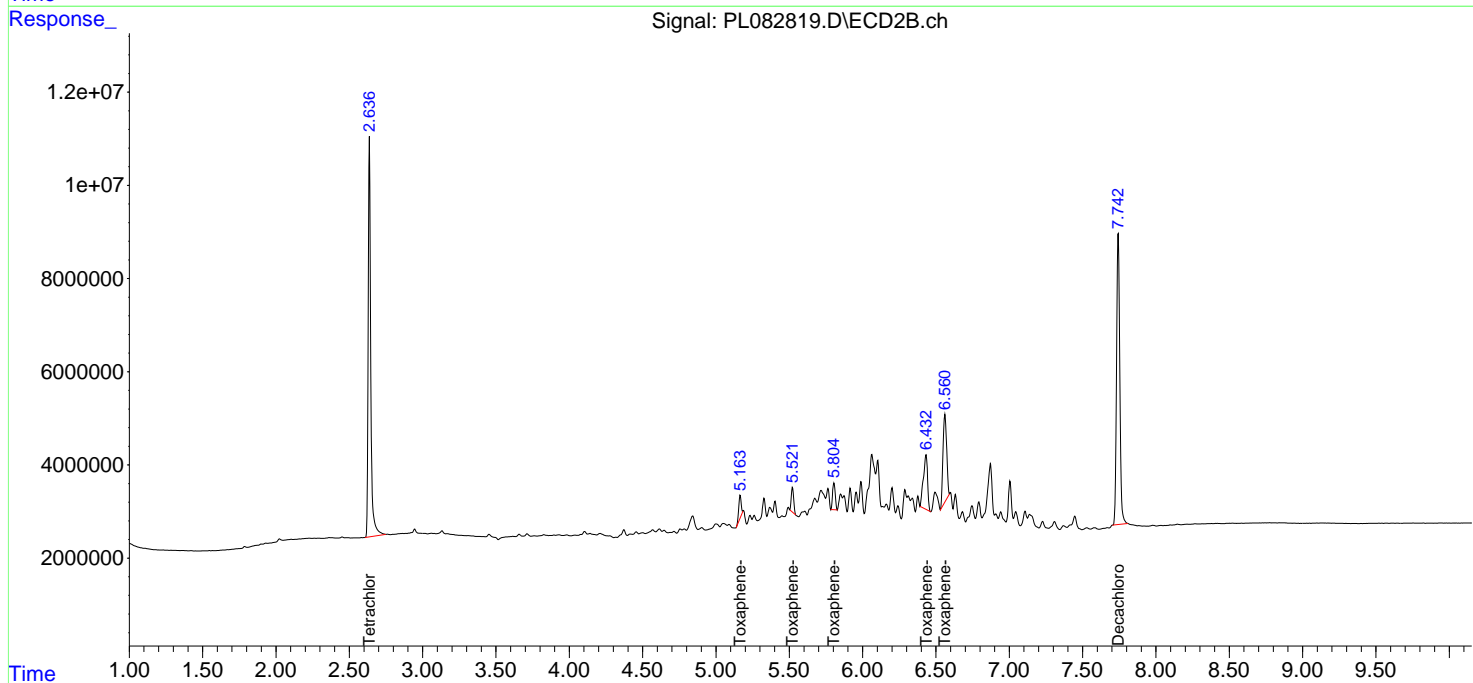
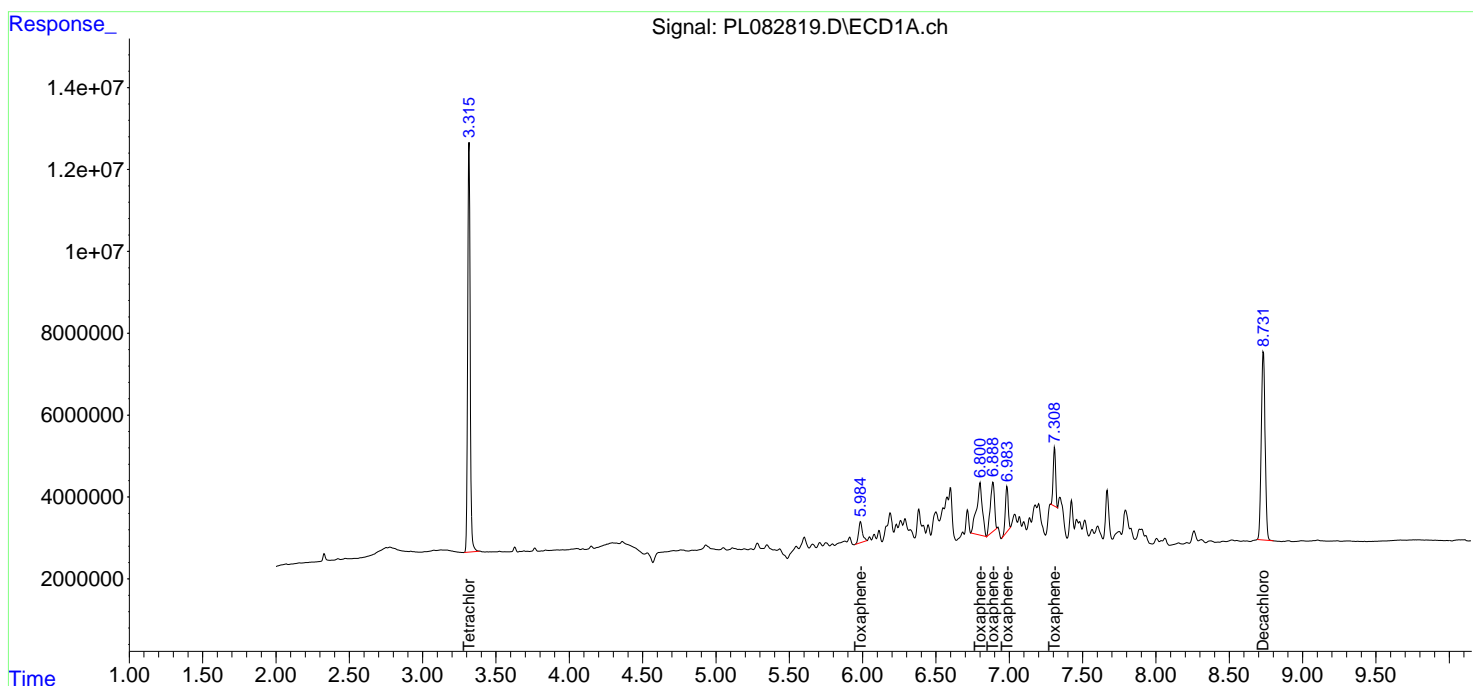
(f)=RT Delta > 1/2 Window (#)=Amounts differ by > 25% (m)=manual int.

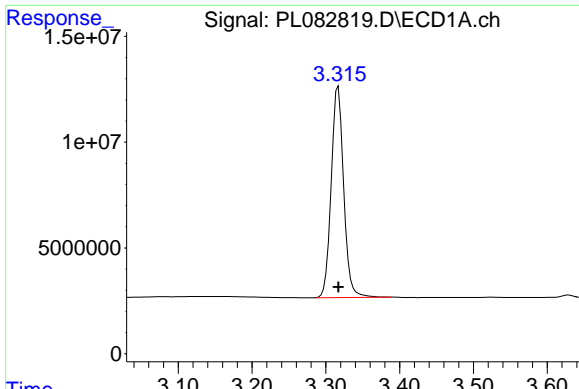
Data Path : Z:\pestpcbsrv\HPCHEM1\ECD_L\Data\PL051923\
 Data File : PL082819.D
 Signal(s) : Signal #1: ECD1A.ch Signal #2: ECD2B.ch
 Acq On : 19 May 2023 16:05
 Operator : AR\AJ
 Sample : PTOXICC500
 Misc :
 ALS Vial : 17 Sample Multiplier: 1

Instrument :
 ECD_L
 ClientSampleId :

Integration File signal 1: autoint1.e
 Integration File signal 2: autoint2.e
 Quant Time: May 20 04:42:09 2023
 Quant Method : Z:\pestpcbsrv\HPCHEM1\ECD_L\methods\LTX051923.M
 Quant Title : GC Extractables
 QLast Update : Sat May 20 04:40:16 2023
 Response via : Initial Calibration
 Integrator: ChemStation

Volume Inj. : 2 µl
 Signal #1 Phase : Rtx-CLPesticide 1 Signal #2 Phase: Rtx-CLPesticide 1
 Signal #1 Info : 30M x 0.32mm x0.3 Signal #2 Info : 30M x 0.32mm x 0.25µm

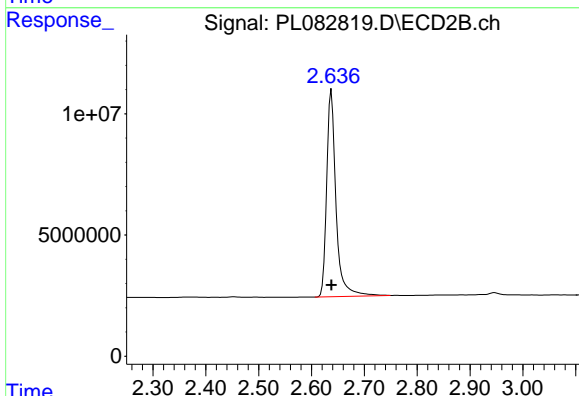




#1 Tetrachloro-m-xylene

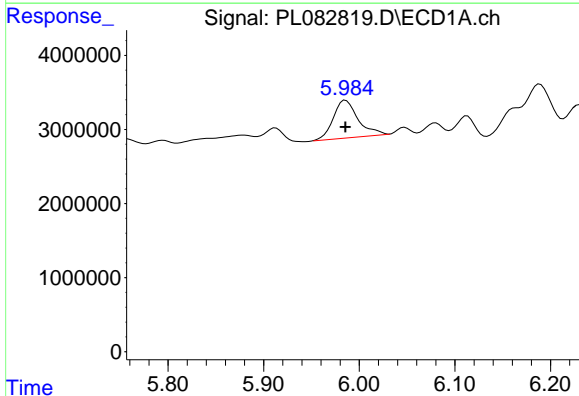
R.T.: 3.317 min
 Delta R.T.: 0.000 min
 Response: 117186861
 Conc: 50.00 ng/ml

Instrument :
 ECD_L
 ClientSampleId :



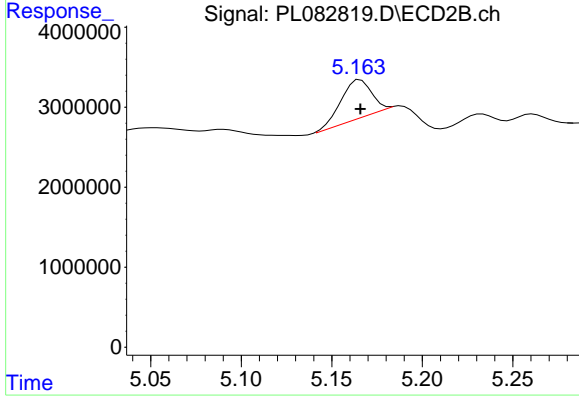
#1 Tetrachloro-m-xylene

R.T.: 2.638 min
 Delta R.T.: 0.000 min
 Response: 104912422
 Conc: 50.00 ng/ml



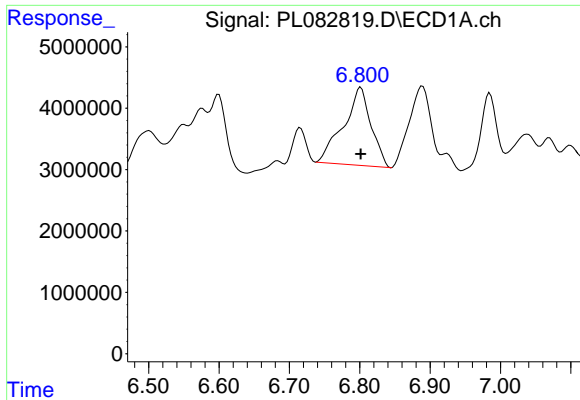
#2 Toxaphene-1

R.T.: 5.986 min
 Delta R.T.: 0.000 min
 Response: 9145288
 Conc: 500.00 ng/ml



#2 Toxaphene-1

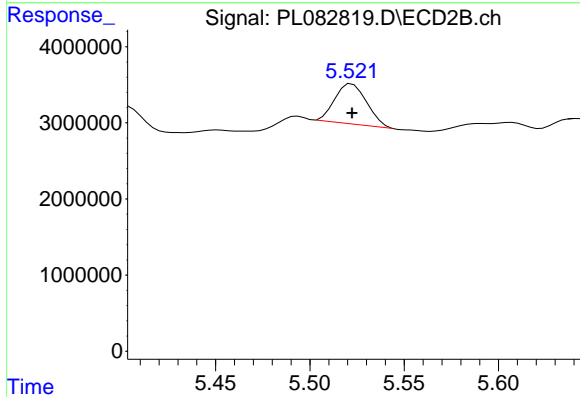
R.T.: 5.166 min
 Delta R.T.: 0.000 min
 Response: 5564181
 Conc: 500.00 ng/ml



#3 Toxaphene-2

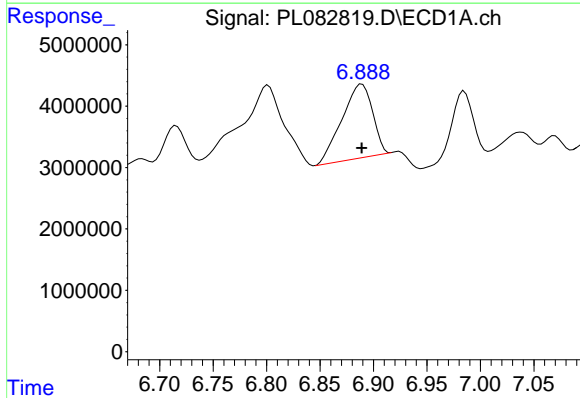
R.T.: 6.801 min
 Delta R.T.: 0.000 min
 Response: 34556967
 Conc: 500.00 ng/ml

Instrument :
 ECD_L
 ClientSampleId :



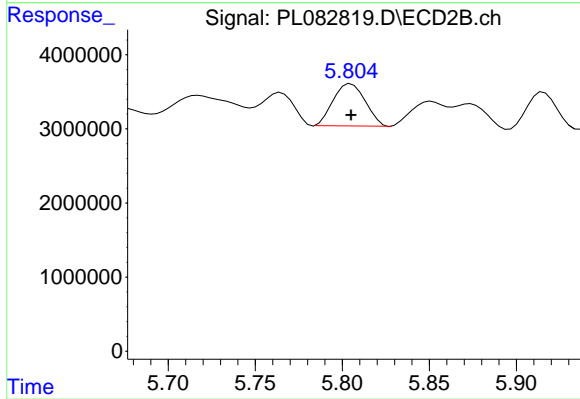
#3 Toxaphene-2

R.T.: 5.522 min
 Delta R.T.: 0.000 min
 Response: 6058530
 Conc: 500.00 ng/ml



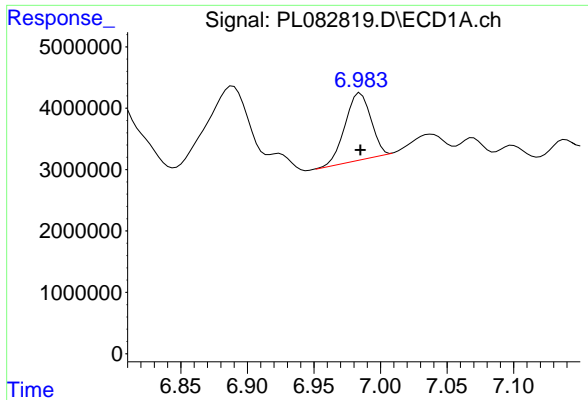
#4 Toxaphene-3

R.T.: 6.889 min
 Delta R.T.: 0.000 min
 Response: 23909517
 Conc: 500.00 ng/ml



#4 Toxaphene-3

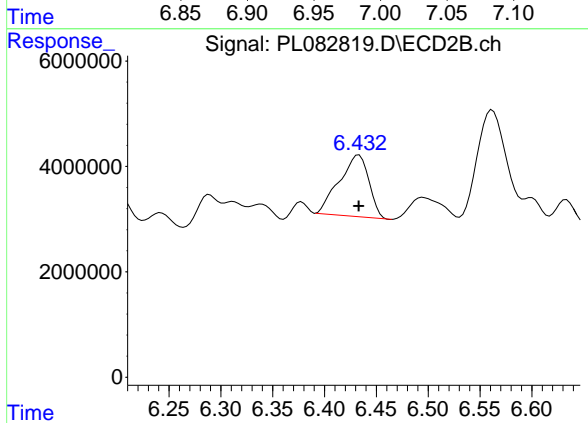
R.T.: 5.805 min
 Delta R.T.: 0.000 min
 Response: 7281823
 Conc: 500.00 ng/ml



#5 Toxaphene-4

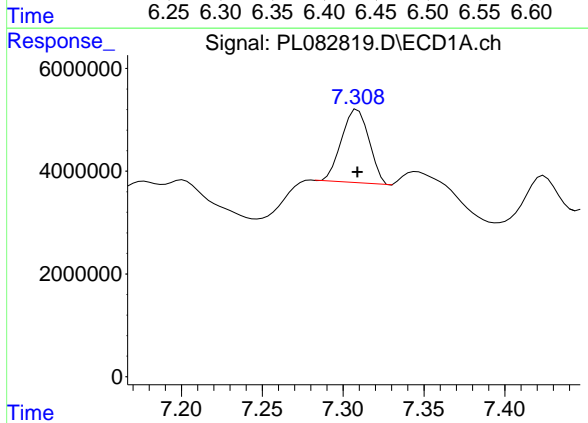
R.T.: 6.985 min
 Delta R.T.: 0.000 min
 Response: 14718073
 Conc: 500.00 ng/ml

Instrument :
 ECD_L
 ClientSampleId :



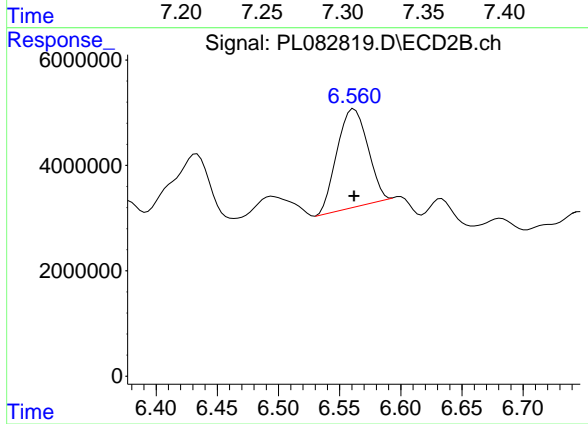
#5 Toxaphene-4

R.T.: 6.433 min
 Delta R.T.: 0.000 min
 Response: 23213980
 Conc: 500.00 ng/ml



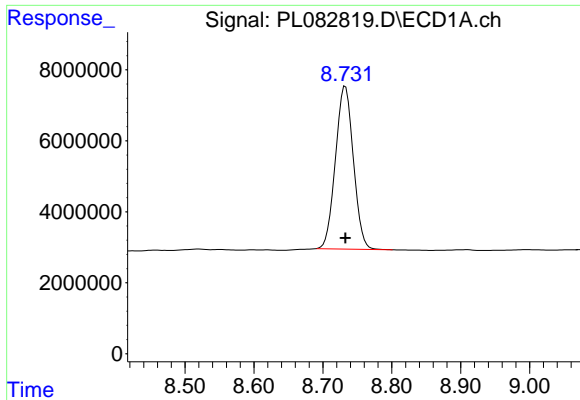
#6 Toxaphene-5

R.T.: 7.309 min
 Delta R.T.: 0.000 min
 Response: 16907398
 Conc: 500.00 ng/ml



#6 Toxaphene-5

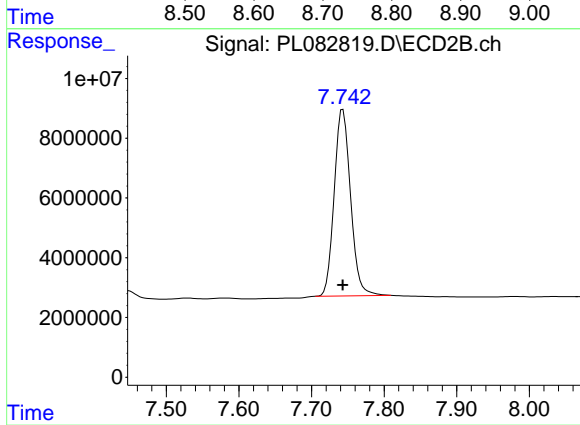
R.T.: 6.562 min
 Delta R.T.: 0.000 min
 Response: 32574091
 Conc: 500.00 ng/ml



#7 Decachlorobiphenyl

R.T.: 8.733 min
Delta R.T.: 0.000 min
Response: 82798047
Conc: 50.00 ng/ml

Instrument :
ECD_L
ClientSampleId :



#7 Decachlorobiphenyl

R.T.: 7.743 min
Delta R.T.: 0.000 min
Response: 97891833
Conc: 50.00 ng/ml