

Data Path : Z:\pestpcbsrv\HPCHEM1\ECD\_L\Data\PL051923\  
 Data File : PL082835.D  
 Signal(s) : Signal #1: ECD1A.ch Signal #2: ECD2B.ch  
 Acq On : 19 May 2023 20:40  
 Operator : AR\AJ  
 Sample : 02846-01  
 Misc :  
 ALS Vial : 30 Sample Multiplier: 1

Instrument :  
 ECD\_L  
 ClientSampleId :  
 EO-01-051823

Integration File signal 1: autoint1.e  
 Integration File signal 2: autoint2.e  
 Quant Time: May 20 05:04:29 2023  
 Quant Method : Z:\pestpcbsrv\HPCHEM1\ECD\_L\methods\PL051923.M  
 Quant Title : GC Extractables  
 QLast Update : Sat May 20 04:58:53 2023  
 Response via : Initial Calibration  
 Integrator: ChemStation

Volume Inj. : 1 µl  
 Signal #1 Phase : ZB-MR2 Signal #2 Phase: ZB-MR1  
 Signal #1 Info : 30M x 0.32mm x0.2 Signal #2 Info : 30M x 0.32mm x0.5µm

Compound	RT#1	RT#2	Resp#1	Resp#2	ng/ml	ng/ml
-----						
System Monitoring Compounds						
1) SA Tetrachlo...	3.317	2.638	19404210	16491649	6.602	6.352
28) SA Decachlor...	8.731	7.743	17120361	19683553	8.163	7.916
Target Compounds						
2) A alpha-BHC	0.000	3.154f	0	89952	N.D.	0.024 #
3) MA gamma-BHC...	4.092	0.000	820183	0	0.198	N.D. #
4) MA Heptachlor	0.000	3.789	0	92836	N.D.	0.025 #
5) MB Aldrin	4.980f	4.078	2220868	939388	0.631	0.289 #
6) B beta-BHC	4.305	3.762	2560151	109826	1.360	0.077 #
7) B delta-BHC	4.530	3.988	720545	445479	0.210	0.136 #
8) B Heptachlo...	5.437	4.570	1094815	178054	0.342	0.060 #
9) A Endosulfan I	0.000	4.966f	0	1165706	N.D.	0.417 #
10) B gamma-Chl...	5.690	4.839f	6157872	6448596	1.938	2.147
11) B alpha-Chl...	5.769	4.879	7247406	6022956	2.258	2.006
12) B 4,4'-DDE	5.951	5.070	-490001	1571563	N.D.	0.647
13) MA Dieldrin	0.000	5.204	0	2417082	N.D.	0.856 #
14) MA Endrin	0.000	5.485	0	311904	N.D.	0.123 #
17) MA 4,4'-DDT	6.770	5.871	1191526	1290538	0.476	0.578
18) B Endrin al...	0.000	5.964	0	330203	N.D.	0.167 #
19) B Endosulfa...	6.905	6.165	164911	31122	0.064	0.013 #
21) B Endrin ke...	0.000	6.660f	0	137180	N.D.	0.051 #
22) Mirex	7.823f	0.000	164015	0	0.078	N.D. #
23) Chlordane-1	4.455	3.623	1659050	2051376	15.165	24.861 #
24) Chlordane-2	4.980	4.195	2220868	2256422	20.161	25.345 #
25) Chlordane-3	5.690	4.839f	6157872	6448596	14.842	24.197 #
26) Chlordane-4	5.769	4.879	7247406	6022956	14.312	21.377 #
27) Chlordane-5	6.608	5.771	1236531	1836701	15.067	18.907 #

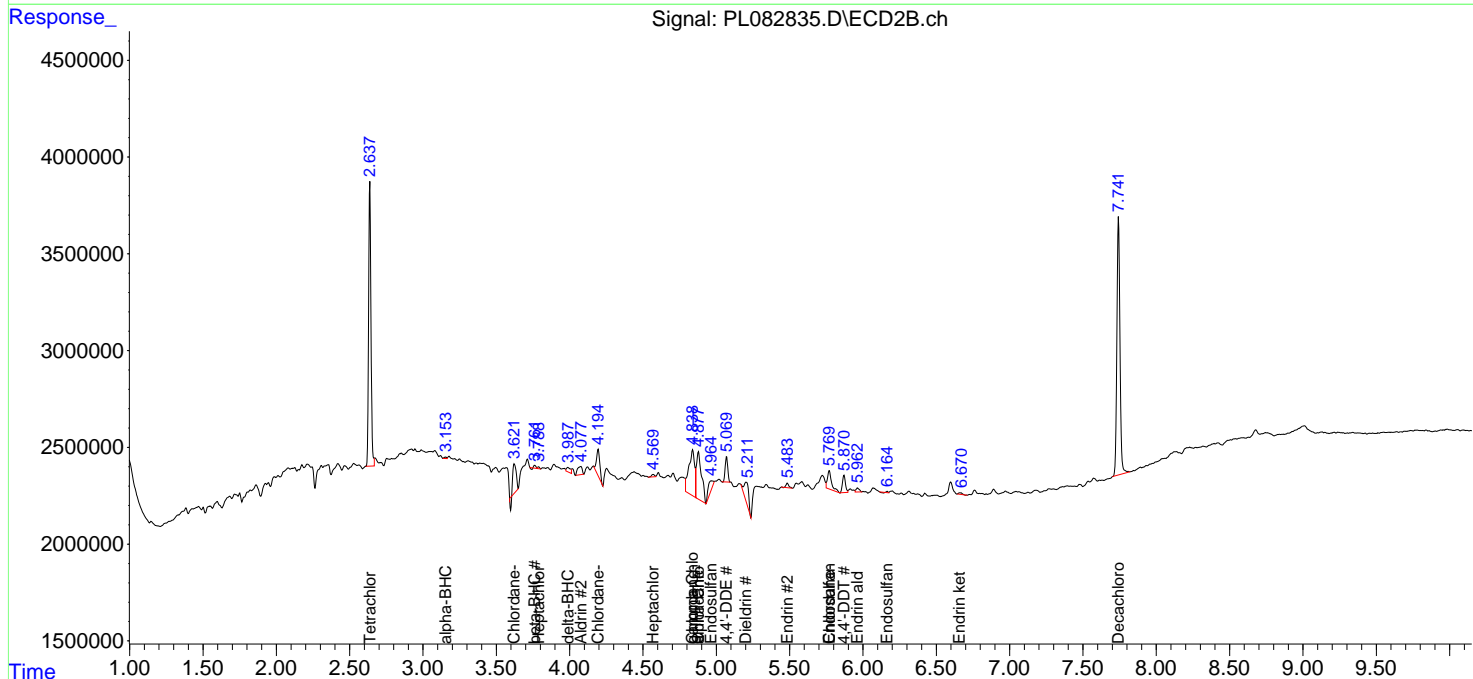
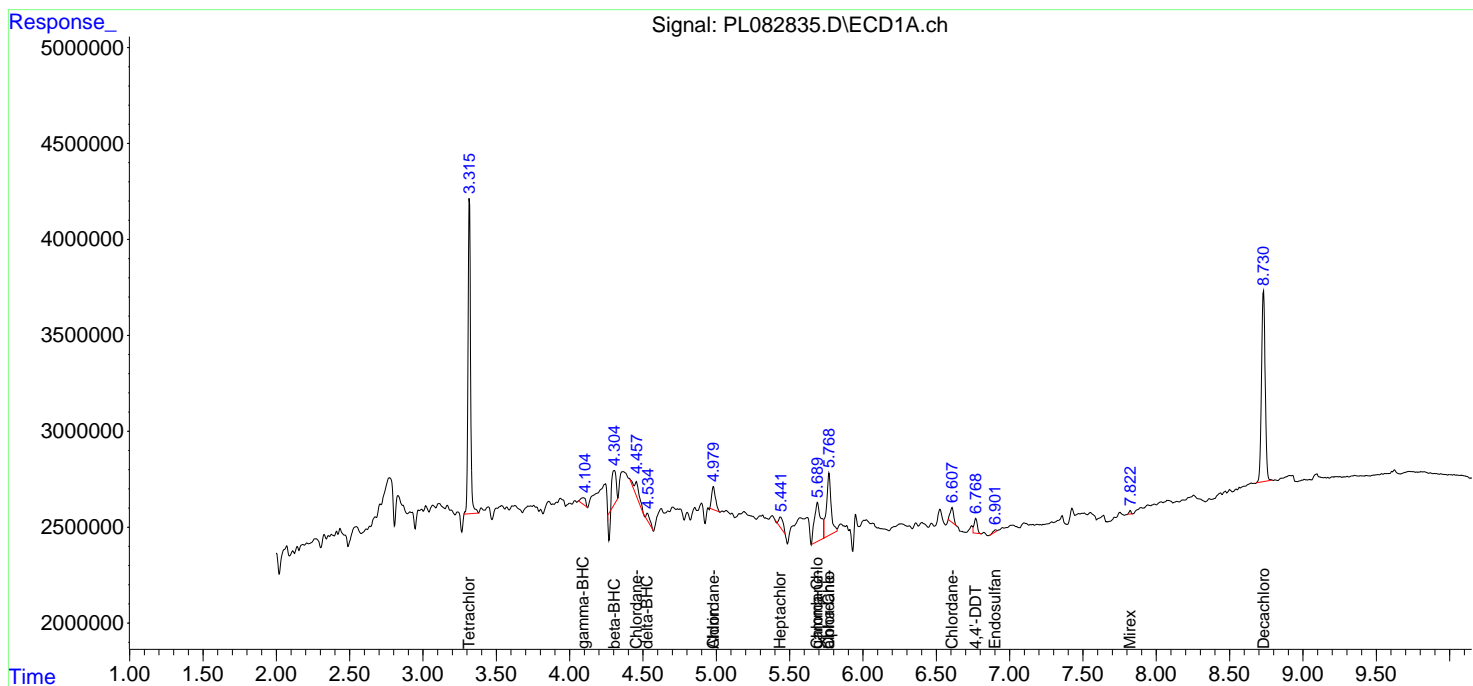
(f)=RT Delta > 1/2 Window (#)=Amounts differ by > 25% (m)=manual int.

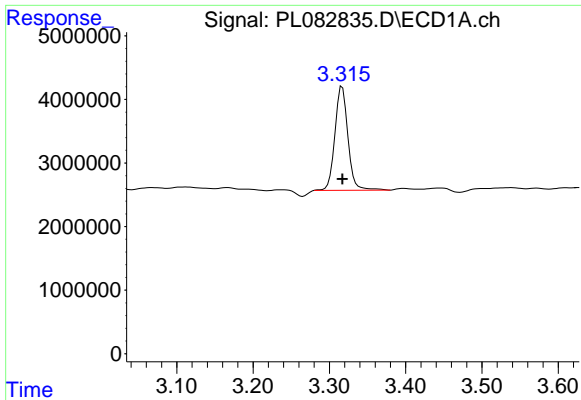
Data Path : Z:\pestpcbsrv\HPCHEM1\ECD\_L\Data\PL051923\  
 Data File : PL082835.D  
 Signal(s) : Signal #1: ECD1A.ch Signal #2: ECD2B.ch  
 Acq On : 19 May 2023 20:40  
 Operator : AR\AJ  
 Sample : 02846-01  
 Misc :  
 ALS Vial : 30 Sample Multiplier: 1

Instrument :  
 ECD\_L  
 ClientSampleId :  
 EO-01-051823

Integration File signal 1: autoint1.e  
 Integration File signal 2: autoint2.e  
 Quant Time: May 20 05:04:29 2023  
 Quant Method : Z:\pestpcbsrv\HPCHEM1\ECD\_L\methods\PL051923.M  
 Quant Title : GC Extractables  
 QLast Update : Sat May 20 04:58:53 2023  
 Response via : Initial Calibration  
 Integrator: ChemStation

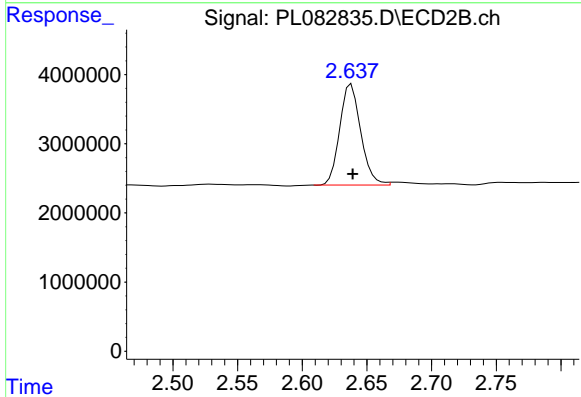
Volume Inj. : 1 µl  
 Signal #1 Phase : ZB-MR2 Signal #2 Phase: ZB-MR1  
 Signal #1 Info : 30M x 0.32mm x0.2 Signal #2 Info : 30M x 0.32mm x0.5µm



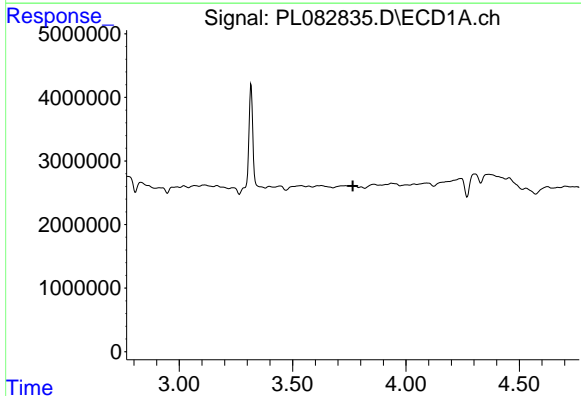


#1 Tetrachloro-m-xylene  
 R.T.: 3.317 min  
 Delta R.T.: 0.000 min  
 Response: 19404210  
 Conc: 6.60 ng/ml

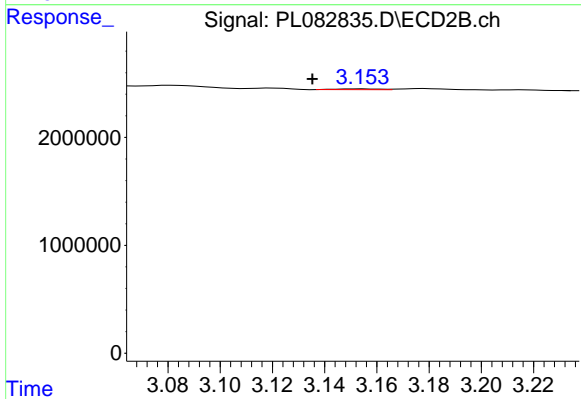
Instrument :  
 ECD\_L  
 ClientSampleId :  
 EO-01-051823



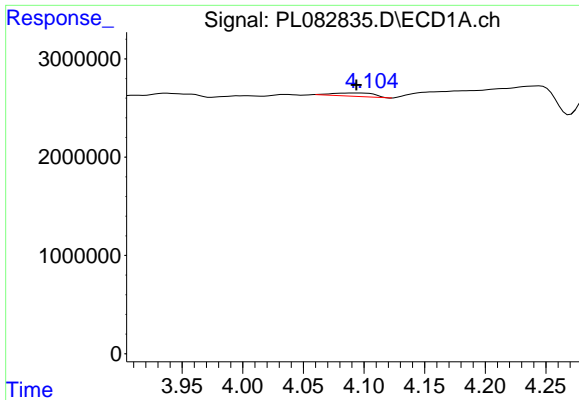
#1 Tetrachloro-m-xylene  
 R.T.: 2.638 min  
 Delta R.T.: -0.001 min  
 Response: 16491649  
 Conc: 6.35 ng/ml



#2 alpha-BHC  
 R.T.: 0.000 min  
 Exp R.T. : 3.766 min  
 Response: 0  
 Conc: N.D.

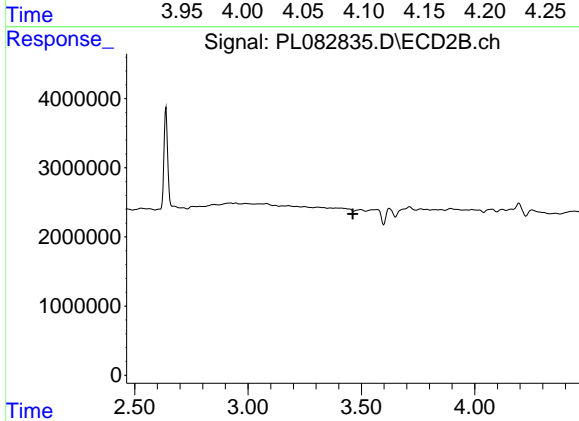


#2 alpha-BHC  
 R.T.: 3.154 min  
 Delta R.T.: 0.019 min  
 Response: 89952  
 Conc: 0.02 ng/ml

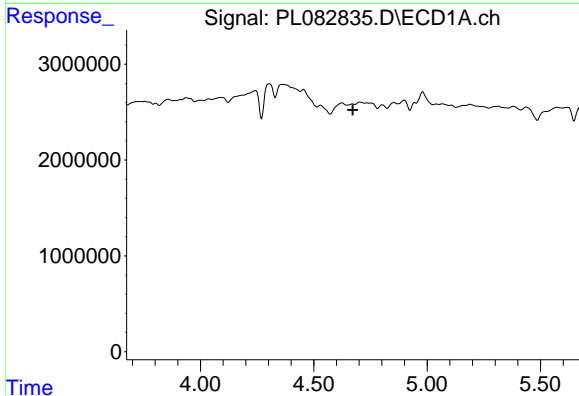


#3 gamma-BHC (Lindane)  
 R.T.: 4.092 min  
 Delta R.T.: -0.001 min  
 Response: 820183  
 Conc: 0.20 ng/ml

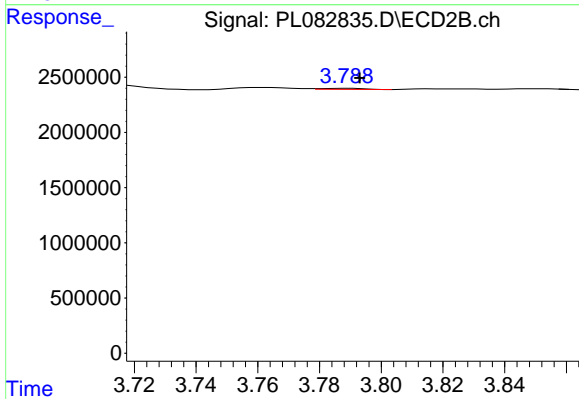
Instrument :  
 ECD\_L  
 ClientSampleId :  
 EO-01-051823



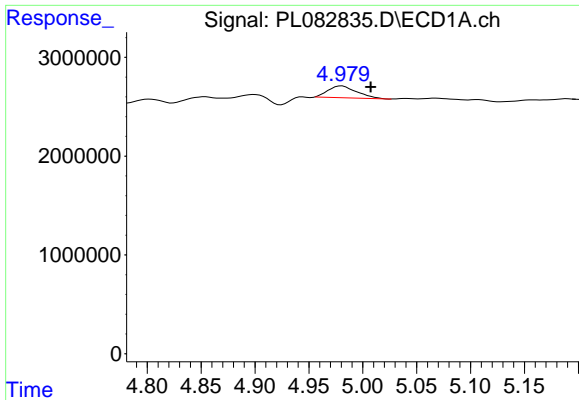
#3 gamma-BHC (Lindane)  
 R.T.: 0.000 min  
 Exp R.T. : 3.462 min  
 Response: 0  
 Conc: N.D.



#4 Heptachlor  
 R.T.: 0.000 min  
 Exp R.T. : 4.672 min  
 Response: 0  
 Conc: N.D.

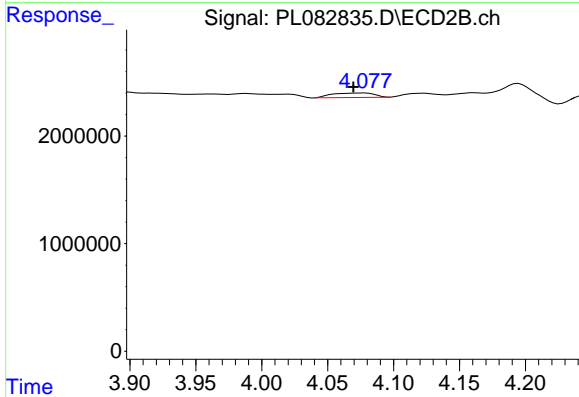


#4 Heptachlor  
 R.T.: 3.789 min  
 Delta R.T.: -0.004 min  
 Response: 92836  
 Conc: 0.03 ng/ml

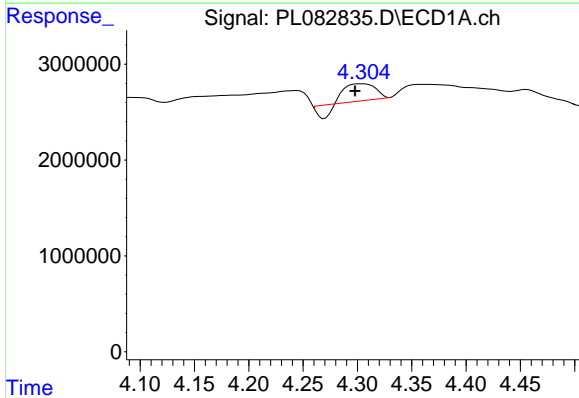


#5 Aldrin  
 R.T.: 4.980 min  
 Delta R.T.: -0.027 min  
 Response: 2220868  
 Conc: 0.63 ng/ml

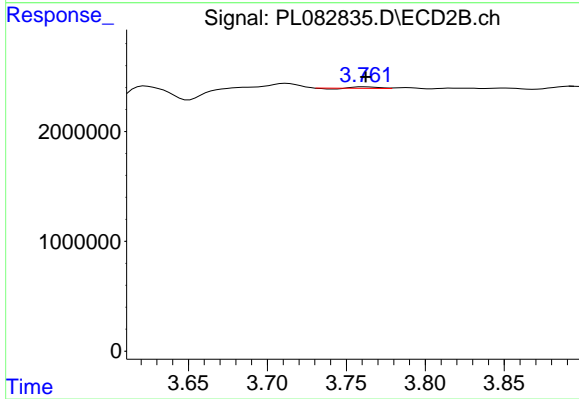
Instrument :  
 ECD\_L  
 ClientSampleId :  
 EO-01-051823



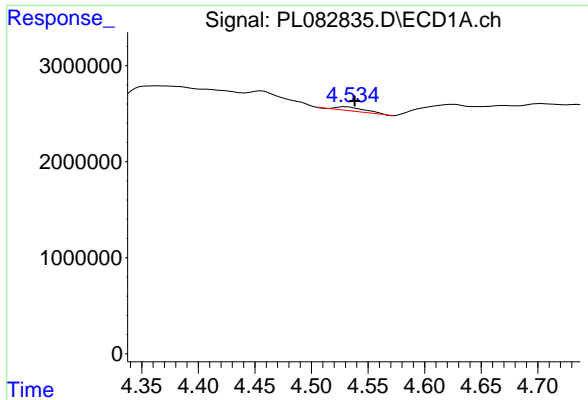
#5 Aldrin  
 R.T.: 4.078 min  
 Delta R.T.: 0.008 min  
 Response: 939388  
 Conc: 0.29 ng/ml



#6 beta-BHC  
 R.T.: 4.305 min  
 Delta R.T.: 0.007 min  
 Response: 2560151  
 Conc: 1.36 ng/ml



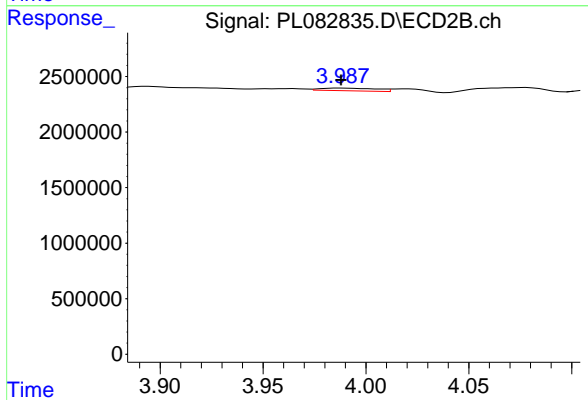
#6 beta-BHC  
 R.T.: 3.762 min  
 Delta R.T.: 0.000 min  
 Response: 109826  
 Conc: 0.08 ng/ml



#7 delta-BHC

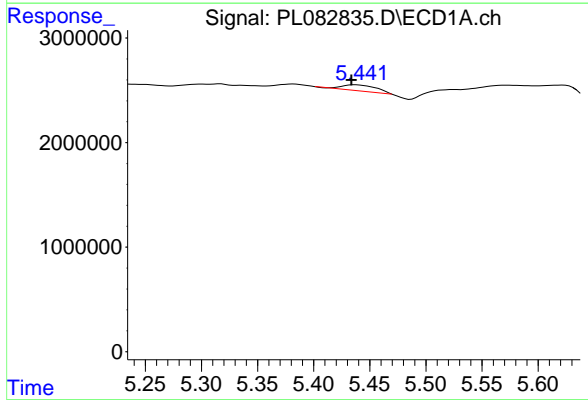
R.T.: 4.530 min  
 Delta R.T.: -0.008 min  
 Response: 720545  
 Conc: 0.21 ng/ml

Instrument :  
 ECD\_L  
 ClientSampleId :  
 EO-01-051823



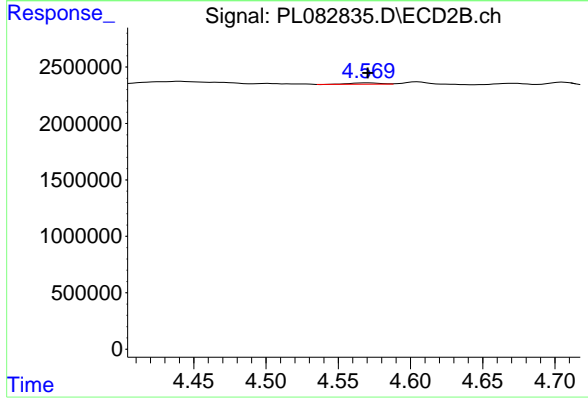
#7 delta-BHC

R.T.: 3.988 min  
 Delta R.T.: 0.000 min  
 Response: 445479  
 Conc: 0.14 ng/ml



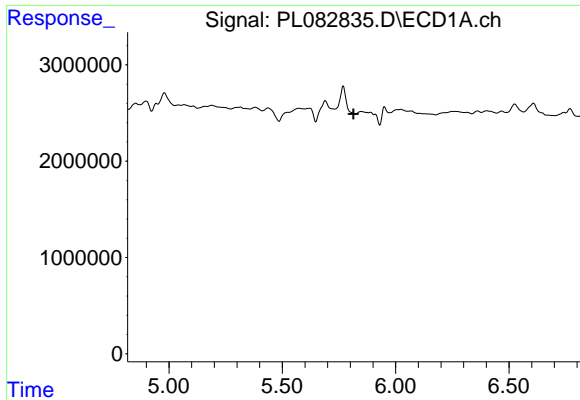
#8 Heptachlor epoxide

R.T.: 5.437 min  
 Delta R.T.: 0.004 min  
 Response: 1094815  
 Conc: 0.34 ng/ml



#8 Heptachlor epoxide

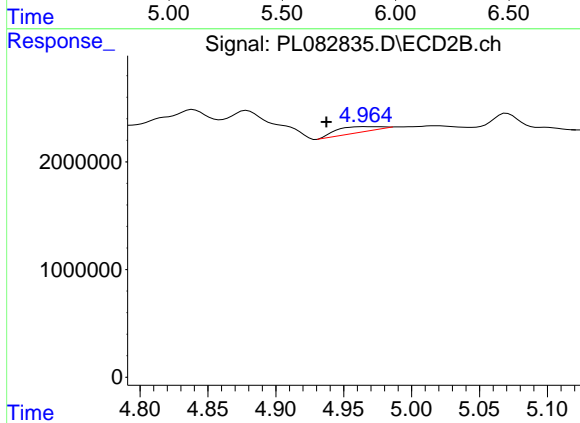
R.T.: 4.570 min  
 Delta R.T.: 0.000 min  
 Response: 178054  
 Conc: 0.06 ng/ml



#9 Endosulfan I

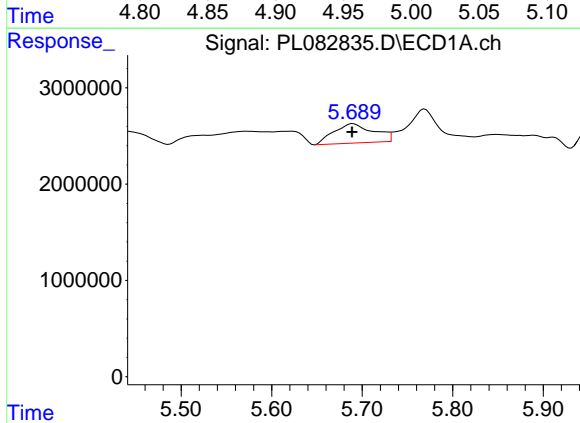
R.T.: 0.000 min  
 Exp R.T.: 5.815 min  
 Response: 0  
 Conc: N.D.

Instrument :  
 ECD\_L  
 ClientSampleId :  
 EO-01-051823



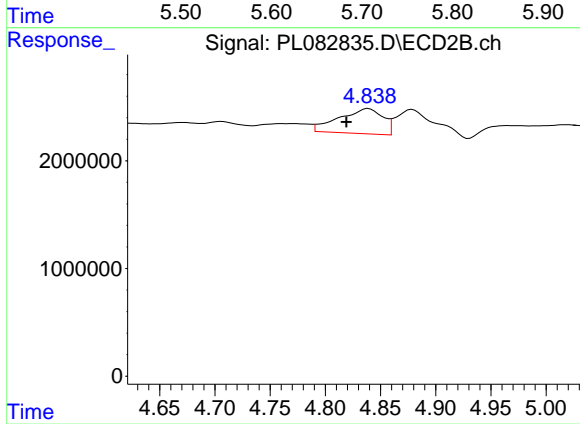
#9 Endosulfan I

R.T.: 4.966 min  
 Delta R.T.: 0.029 min  
 Response: 1165706  
 Conc: 0.42 ng/ml



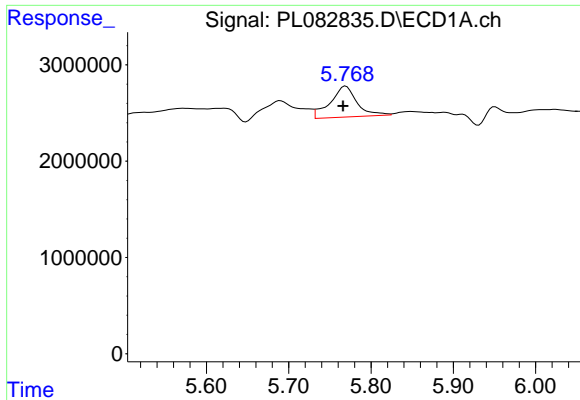
#10 gamma-Chlordane

R.T.: 5.690 min  
 Delta R.T.: 0.001 min  
 Response: 6157872  
 Conc: 1.94 ng/ml



#10 gamma-Chlordane

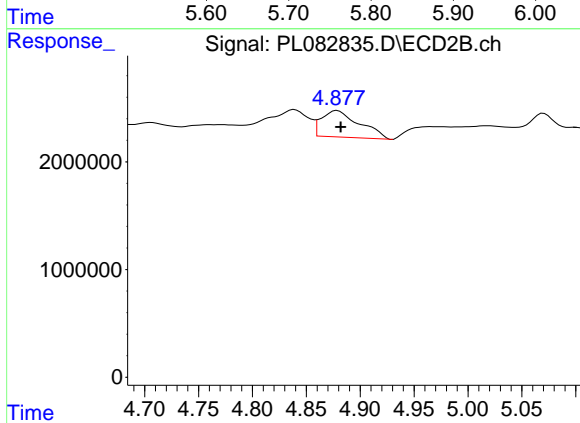
R.T.: 4.839 min  
 Delta R.T.: 0.020 min  
 Response: 6448596  
 Conc: 2.15 ng/ml



#11 alpha-Chlordane

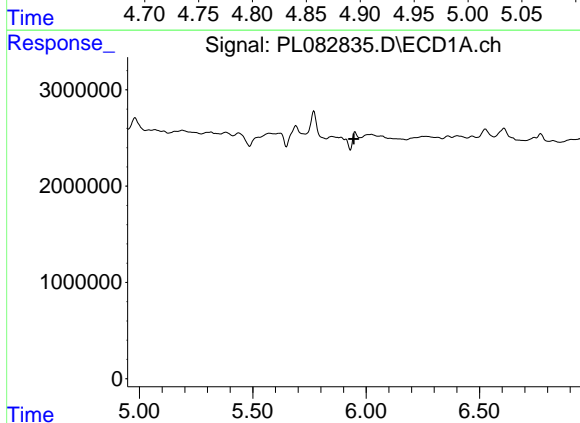
R.T.: 5.769 min  
 Delta R.T.: 0.003 min  
 Response: 7247406  
 Conc: 2.26 ng/ml

Instrument :  
 ECD\_L  
 ClientSampleId :  
 EO-01-051823



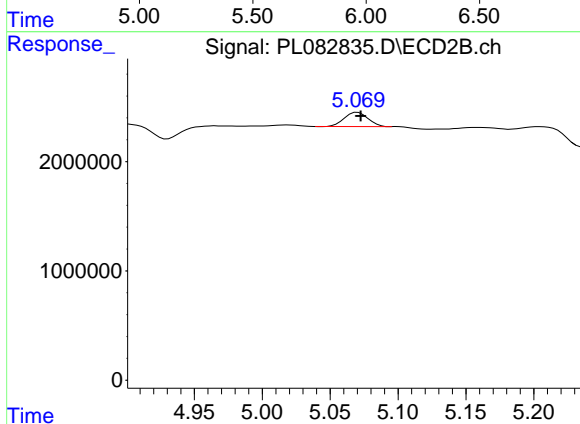
#11 alpha-Chlordane

R.T.: 4.879 min  
 Delta R.T.: -0.003 min  
 Response: 6022956  
 Conc: 2.01 ng/ml



#12 4,4'-DDE

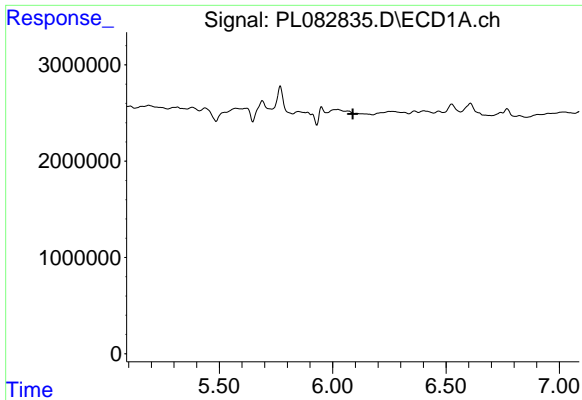
R.T.: 5.951 min  
 Delta R.T.: 0.006 min  
 Response: -490001  
 Conc: N.D.



#12 4,4'-DDE

R.T.: 5.070 min  
 Delta R.T.: -0.002 min  
 Response: 1571563  
 Conc: 0.65 ng/ml

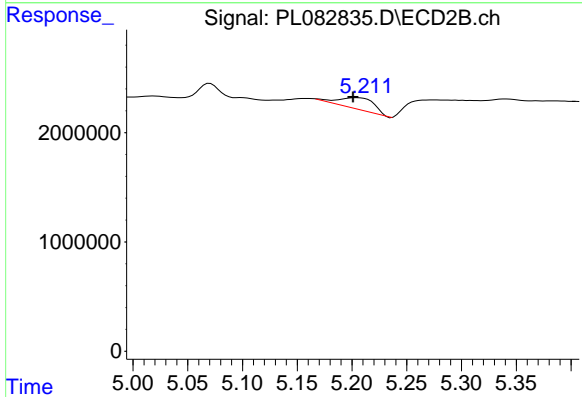




#13 Dieldrin

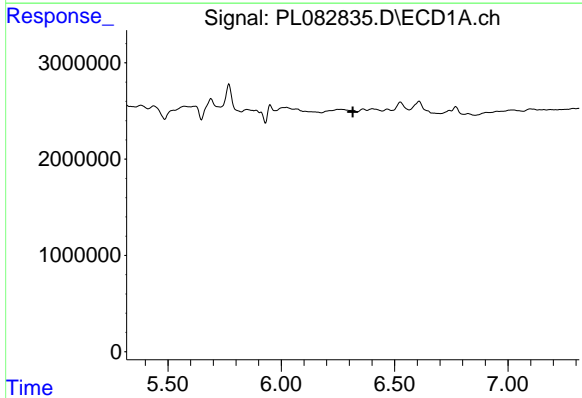
R.T.: 0.000 min  
 Exp R.T. : 6.089 min  
 Response: 0  
 Conc: N.D.

Instrument :  
 ECD\_L  
 ClientSampleId :  
 EO-01-051823



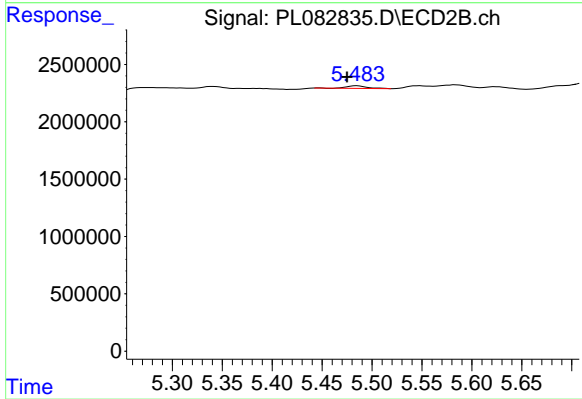
#13 Dieldrin

R.T.: 5.204 min  
 Delta R.T.: 0.003 min  
 Response: 2417082  
 Conc: 0.86 ng/ml



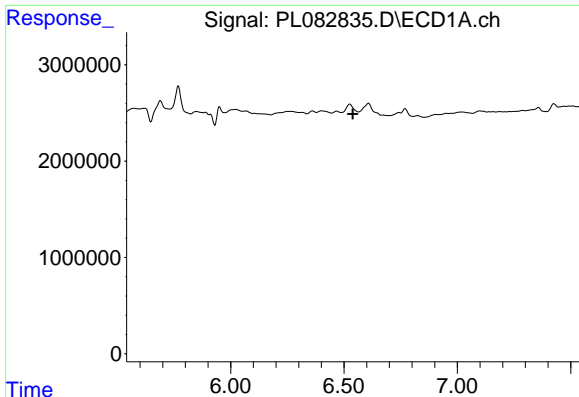
#14 Endrin

R.T.: 0.000 min  
 Exp R.T. : 6.316 min  
 Response: 0  
 Conc: N.D.



#14 Endrin

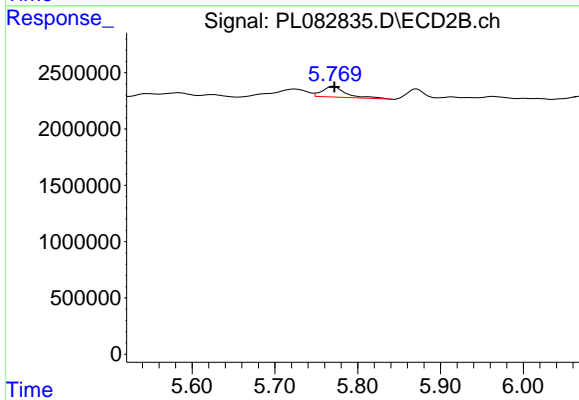
R.T.: 5.485 min  
 Delta R.T.: 0.010 min  
 Response: 311904  
 Conc: 0.12 ng/ml



#15 Endosulfan II

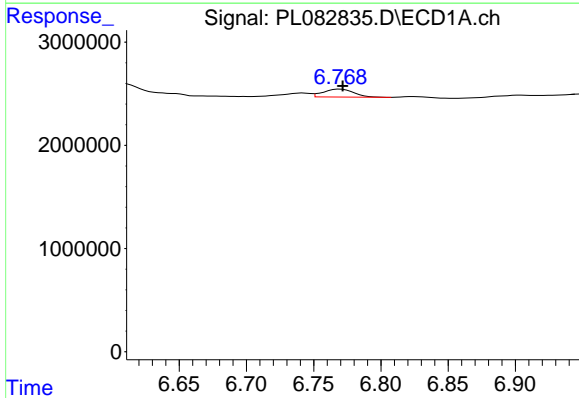
R.T.: 6.526 min  
 Delta R.T.: -0.013 min  
 Response: 1613250  
 Conc: N.D.

Instrument :  
 ECD\_L  
 ClientSampleId :  
 EO-01-051823



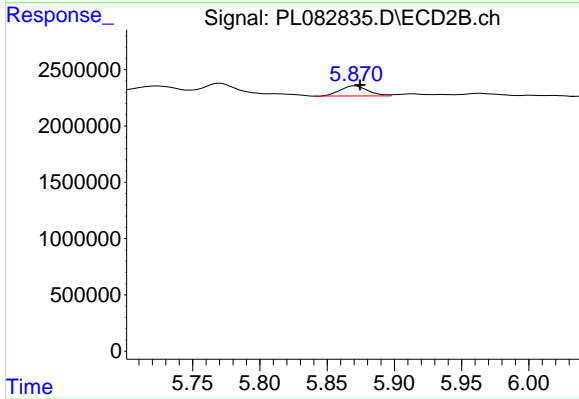
#15 Endosulfan II

R.T.: 5.771 min  
 Delta R.T.: -0.001 min  
 Response: 1836701  
 Conc: 0.74 ng/ml



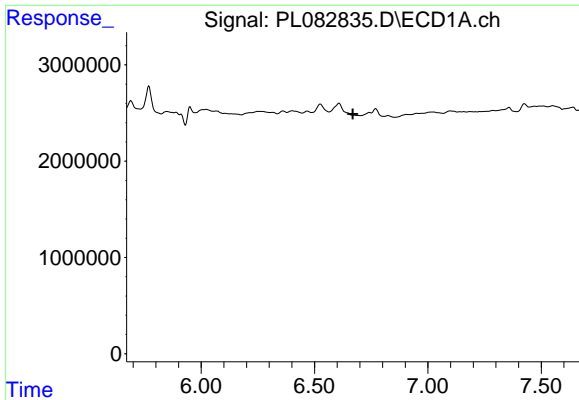
#17 4,4'-DDT

R.T.: 6.770 min  
 Delta R.T.: -0.002 min  
 Response: 1191526  
 Conc: 0.48 ng/ml



#17 4,4'-DDT

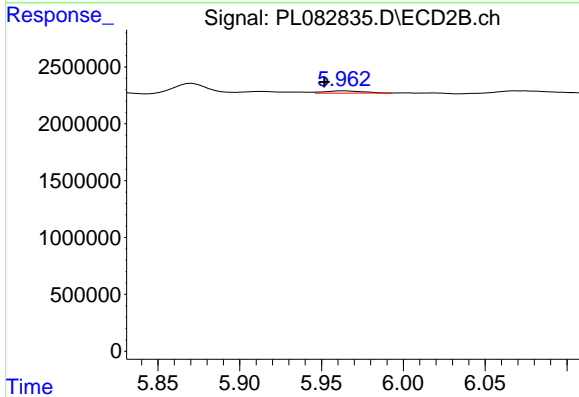
R.T.: 5.871 min  
 Delta R.T.: -0.004 min  
 Response: 1290538  
 Conc: 0.58 ng/ml



#18 Endrin aldehyde

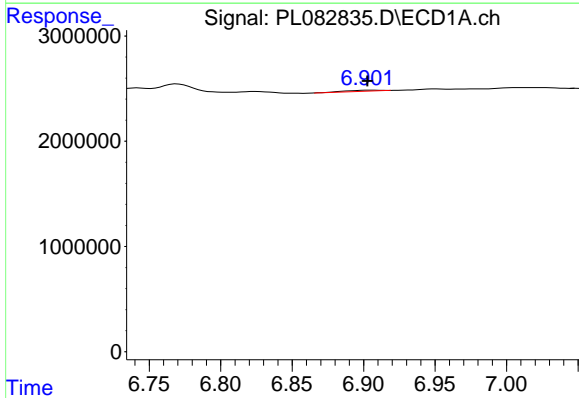
R.T.: 0.000 min  
 Exp R.T.: 6.668 min  
 Response: 0  
 Conc: N.D.

Instrument :  
 ECD\_L  
 ClientSampleId :  
 EO-01-051823



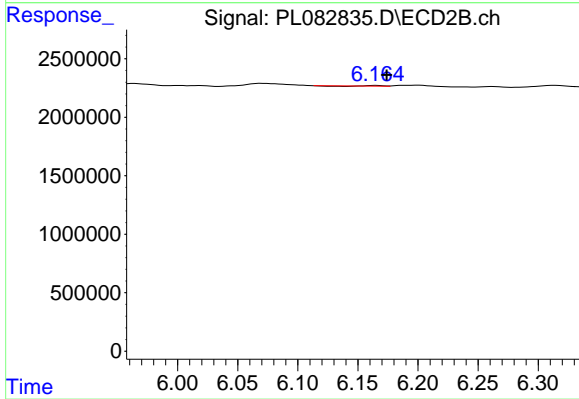
#18 Endrin aldehyde

R.T.: 5.964 min  
 Delta R.T.: 0.012 min  
 Response: 330203  
 Conc: 0.17 ng/ml



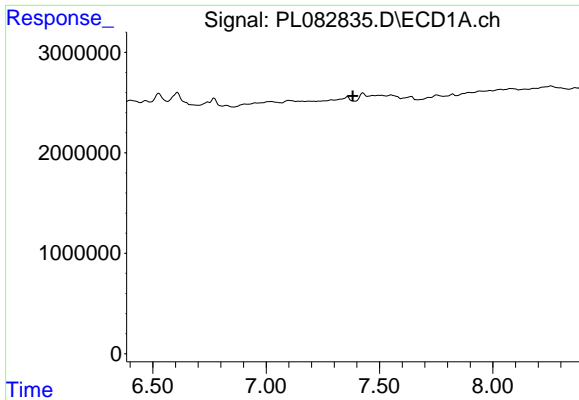
#19 Endosulfan Sulfate

R.T.: 6.905 min  
 Delta R.T.: 0.002 min  
 Response: 164911  
 Conc: 0.06 ng/ml



#19 Endosulfan Sulfate

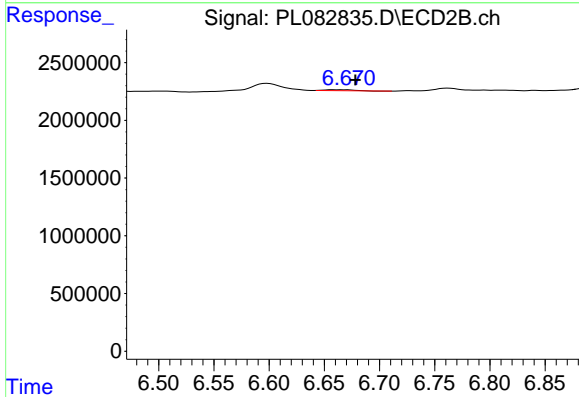
R.T.: 6.165 min  
 Delta R.T.: -0.009 min  
 Response: 31122  
 Conc: 0.01 ng/ml



#21 Endrin ketone

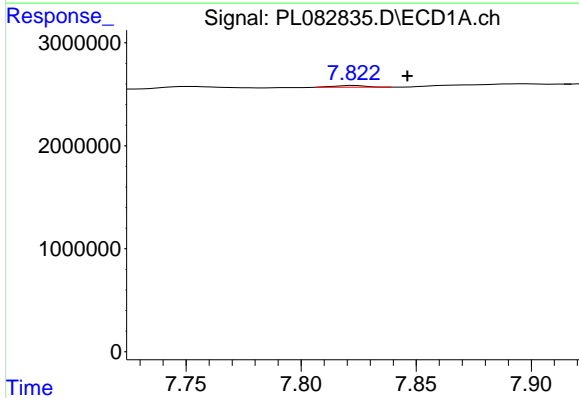
R.T.: 0.000 min  
 Exp R.T.: 7.382 min  
 Response: 0  
 Conc: N.D.

Instrument :  
 ECD\_L  
 ClientSampleId :  
 EO-01-051823



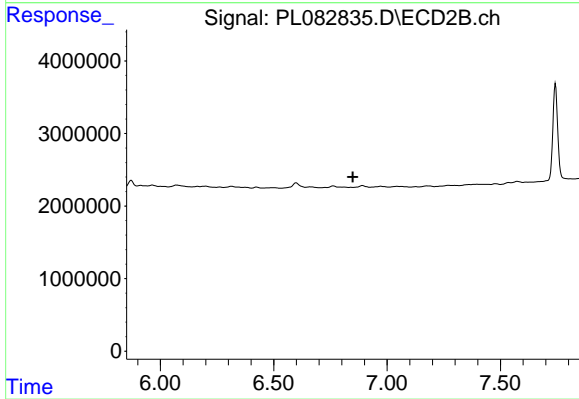
#21 Endrin ketone

R.T.: 6.660 min  
 Delta R.T.: -0.018 min  
 Response: 137180  
 Conc: 0.05 ng/ml



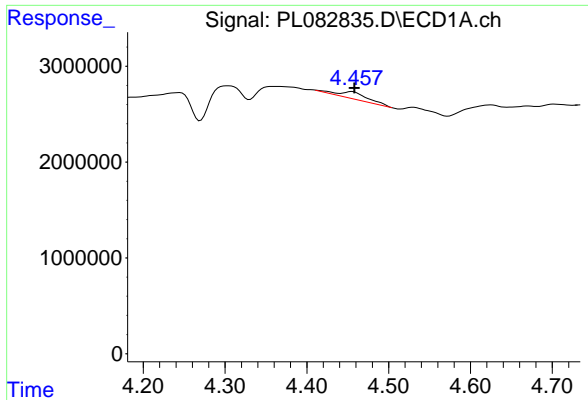
#22 Mirex

R.T.: 7.823 min  
 Delta R.T.: -0.023 min  
 Response: 164015  
 Conc: 0.08 ng/ml



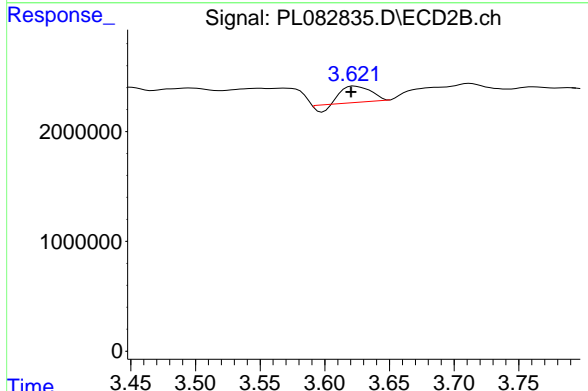
#22 Mirex

R.T.: 0.000 min  
 Exp R.T.: 6.849 min  
 Response: 0  
 Conc: N.D.

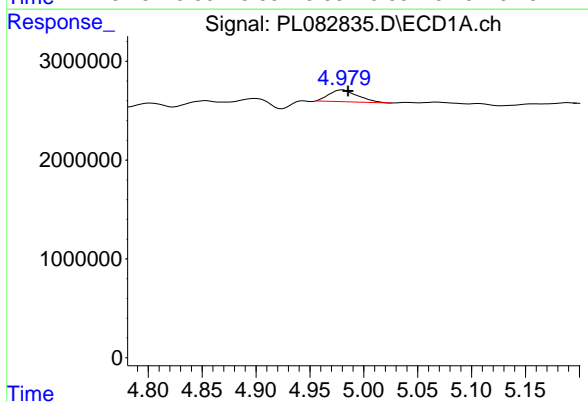


#23 Chlordane-1  
 R.T.: 4.455 min  
 Delta R.T.: -0.003 min  
 Response: 1659050  
 Conc: 15.16 ng/ml

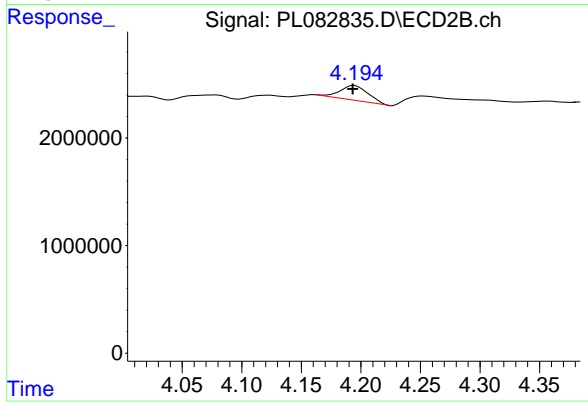
Instrument : ECD\_L  
 ClientSampleId : EO-01-051823



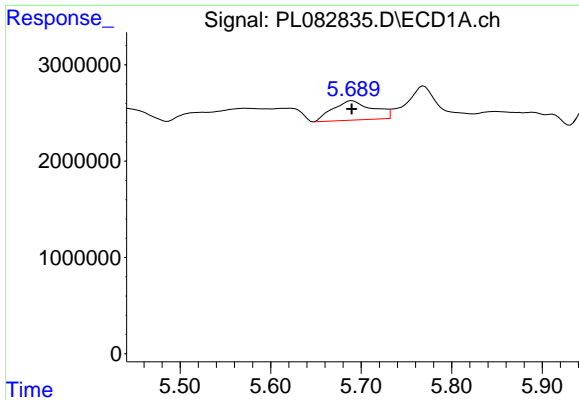
#23 Chlordane-1  
 R.T.: 3.623 min  
 Delta R.T.: 0.002 min  
 Response: 2051376  
 Conc: 24.86 ng/ml



#24 Chlordane-2  
 R.T.: 4.980 min  
 Delta R.T.: -0.005 min  
 Response: 2220868  
 Conc: 20.16 ng/ml



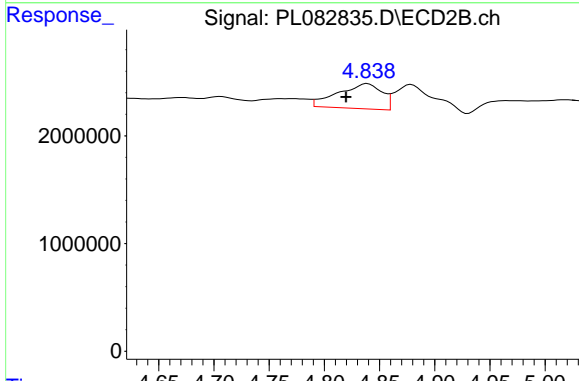
#24 Chlordane-2  
 R.T.: 4.195 min  
 Delta R.T.: 0.002 min  
 Response: 2256422  
 Conc: 25.34 ng/ml



#25 Chlordane-3

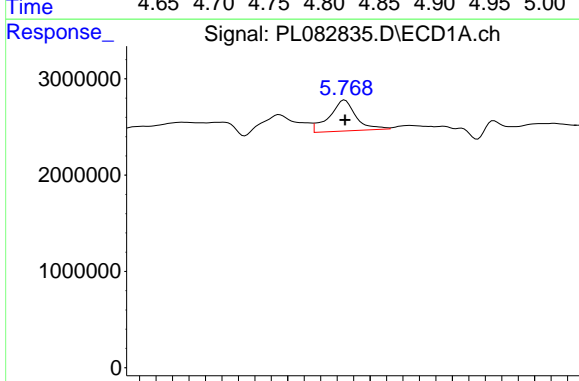
R.T.: 5.690 min  
 Delta R.T.: 0.000 min  
 Response: 6157872  
 Conc: 14.84 ng/ml

Instrument :  
 ECD\_L  
 ClientSampleId :  
 EO-01-051823



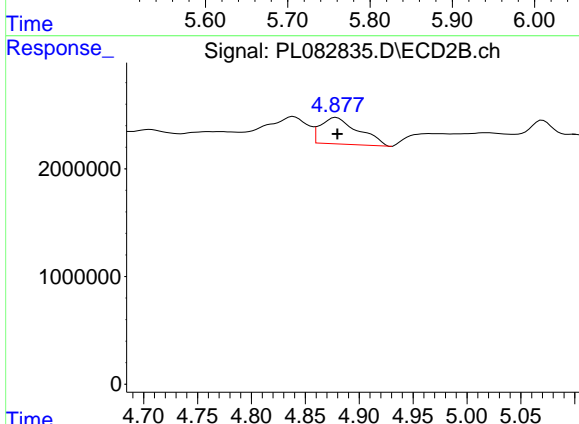
#25 Chlordane-3

R.T.: 4.839 min  
 Delta R.T.: 0.019 min  
 Response: 6448596  
 Conc: 24.20 ng/ml



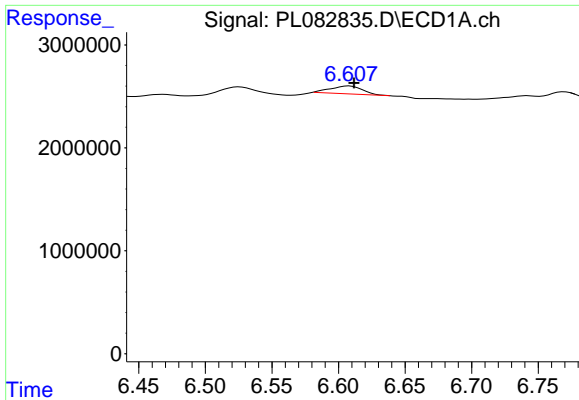
#26 Chlordane-4

R.T.: 5.769 min  
 Delta R.T.: 0.000 min  
 Response: 7247406  
 Conc: 14.31 ng/ml



#26 Chlordane-4

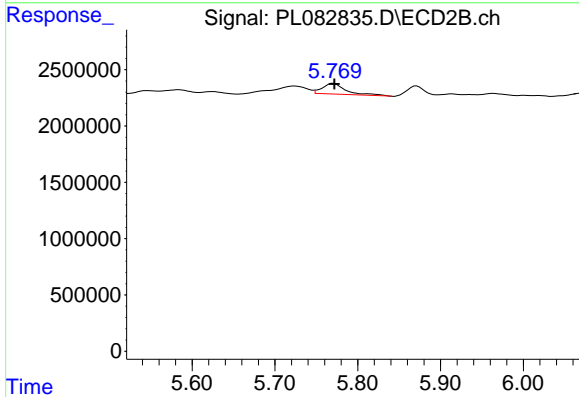
R.T.: 4.879 min  
 Delta R.T.: 0.000 min  
 Response: 6022956  
 Conc: 21.38 ng/ml



#27 Chlordane-5

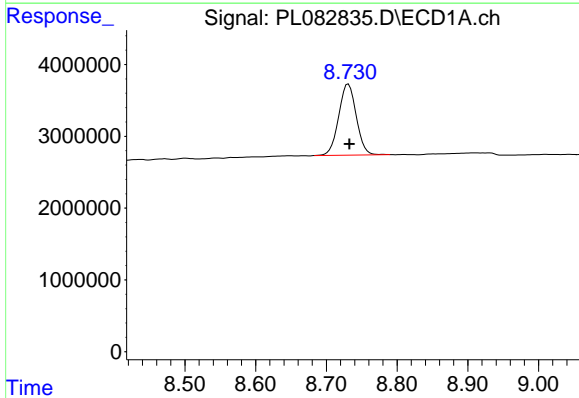
R.T.: 6.608 min  
 Delta R.T.: -0.004 min  
 Response: 1236531  
 Conc: 15.07 ng/ml

Instrument :  
 ECD\_L  
 ClientSampleId :  
 EO-01-051823



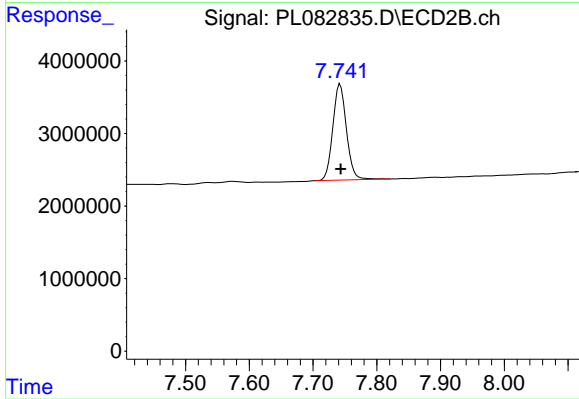
#27 Chlordane-5

R.T.: 5.771 min  
 Delta R.T.: -0.001 min  
 Response: 1836701  
 Conc: 18.91 ng/ml



#28 Decachlorobiphenyl

R.T.: 8.731 min  
 Delta R.T.: -0.002 min  
 Response: 17120361  
 Conc: 8.16 ng/ml



#28 Decachlorobiphenyl

R.T.: 7.743 min  
 Delta R.T.: 0.000 min  
 Response: 19683553  
 Conc: 7.92 ng/ml